

**ZLDH AD 2.1 机场地名代码和名称 Aerodrome location indicator(ICAO / IATA) and name**

ZLDH/DNH-敦煌/莫高 DUNHUANG/Mogao

**ZLDH AD 2.2 机场地理位置和管理资料 Aerodrome geographical and administrative data**

1	机场基准点坐标及其在机场的位置 ARP coordinates and site at AD	N40°09.8' E094°48.6' 1400m inward THR RWY08
2	机场基准点与城市的位置关系 Direction and distance from city	078°GEO, 12.7km from city center
3	机场标高、基准温度、低温均值 ELEV/Reference temperature/Mean low temperature	1124.7 m/35.2°C(JUL)/-13.8°C(JAN)
4	机场标高位置的大地水准面波幅 Geoid undulation at AD ELEV PSN	-
5	磁差(测量年份)及年变率 VAR(Year)/Annual change	39'E(2016)/-
6	机场管理部门、地址、电话、传真、AFS 地址、电子邮箱、网址 AD administration/Address/Telephone/Telefax/AFS/ E-mail/Website	Gansu Province Civil Aviation Airport Group CO.LTD Dunhuang Mogao International Airport CO. Dunhuang Mogao International Airport CO, Mogao town, Dunhuang city, Gansu province, China Post code:736200 TEL:86-937-5955611 FAX:86-937-5955666
7	允许飞行种类 Types of traffic permitted(IFR/VFR)	IFR-VFR
8	机场性质/飞行区指标 Military or civil airport/Reference code	CIVIL/4D
9	备注 Remarks	Nil

**ZLDH AD 2.3 工作时间 Operational hours**

1	机场开放时间 AD Operational hours	H24
2	海关和移民 Customs and immigration	HS
3	卫生健康部门 Health and sanitation	HS
4	航空情报服务讲解室 AIS Briefing Office	H24

5	空中交通服务报告室 ATS Reporting Office	H24
6	气象服务讲解室 MET Briefing Office	H24
7	空中交通服务 Air Traffic Service	H24
8	加油服务 Fuelling	H24
9	地勤服务 Handling	H24
10	安保服务 Security	H24
11	除冰服务 De-icing	H24
12	备注 Remarks	Nil

#### ZLDH AD 2.4 地勤服务和设施 Handling services and facilities

1	货物装卸设施 Cargo-handling facilities	baggage transporter, baggage trailer, pallet, dolly
2	燃油牌号 Fuel types	Jet Fuel No.3
3	滑油牌号 Oil types	Nil
4	加油设施/能力 Fuelling facilities & Capacity	Refueling truck(20000 liters and 18000 liters): 17 liters/sec
5	除冰设施 De-icing facilities	De-icer
6	过站航空器机库 Hangar space for visiting aircraft	Nil
7	过站航空器的维修设施 Repair facilities for visiting aircraft	Line maintenance available for various types of aircraft on request
8	备注 Remarks	potable water supply vehicles, lavatory service vehicles, ground power unit, ground air supply unit, stepladders vehicle, ferry vehicle, follow-me vehicle, rubbish truck, anti-bird vehicle, tractor, power units and conditioners for boarding bridge stands Nr.301-304

**ZLDH AD 2.5 旅客设施 Passenger facilities**

1	宾馆 Hotels	Near AD
2	餐馆 Restaurants	In the terminal
3	交通工具 Transportation	Passenger's coaches, taxis
4	医疗设施 Medical facilities	First-aid center at AD
5	银行和邮局 Bank and Post Office	In the terminal
6	旅行社 Tourist Office	In the terminal
7	备注 Remarks	Nil

**ZLDH AD 2.6 援救与消防服务 Rescue and fire fighting services**

1	机场消防等级 AD category for fire fighting	CAT 7
2	援救设备 Rescue equipment	Fire fight facilities: rapid intervention vehicle, primary foam tender, heavy-duty foam vehicle, dry-chemical tender, illumination truck, logistics truck, command car Rescue equipment: hydraulic spread cutting pliers, toothless cutter, hydraulic jacks, rescue air-cushion Emergency vehicle: ambulance, resuscitation ambulance, emergency equipment transporter
3	搬移受损航空器的能力 Capability for removal of disabled aircraft	Lifting equipment, traction rack, rubber crosstie, mobile surface operation devices, MTWA up to B767-200 and below.
4	备注 Remarks	Nil

**ZLDH AD 2.7 可用季节- 扫雪 Seasonal availability-clearing**

1	可用季节及扫雪设备类型 Seasonal availability/Types of clearing equipment	All seasons Sweeper, hot snow blowers, de-icing fluid truck, friction coefficient test vehicle, snow pusher, three in one snow blower, cold spray truck
2	扫雪顺序 Clearance priorities	RWY, TWY, Apron
3	备注 Remarks	Nil

**ZLDH AD 2.8 停机坪、滑行道及校正位置数据 Aprons, taxiways and check locations data**

1	停机坪道面和强度 Apron surface and strength	道面 Surface	CONC
		强度 Strength	PCR 760/R/A/W/T : Stands Nr.01-05, 301-304 PCR 730/R/A/W/T : Stands Nr.101, 102 PCR 720/R/A/W/T : Stands Nr.06-14
2	滑行道宽度、道面和强度 Taxiway width, surface and strength	宽度 Width	39m : C 36m : E, N1, N2 34m : B 20m : A 18m : F
		道面 Surface	ASPH : A, B, C CONC : E, F, H, N1, N2
		强度 Strength	PCR 1010/F/C/X/T : A, B, C PCR 760/R/A/W/T : F, N1 PCR 720/R/A/W/T : E, H, N2
3	高度表校正点的位置及其标高 ACL location and elevation	Nil	
4	VOR 校正点 VOR checkpoints	Nil	
5	INS 校正点 INS checkpoints	Nil	
6	备注 Remarks	Nil	

**ZLDH AD 2.9 地面活动引导和管制系统与标识**  
**Surface movement guidance and control system and markings**

1	航空器机位号码标记牌、滑行道引导线、航空器目视停靠引导系统的使用 Use of aircraft stand ID signs, TWY guide lines and visual docking / parking guidance system of aircraft stands	Taxiing guidance signs at all intersections of TWY and RWY. Aircraft stand identification sign boards at all stands. Guide lines at all TWYs. Guide lines at all aprons. Visual docking guidance system at aircraft stands Nr. 301-304, Marshalling assistance for other aircraft stands.	
2	跑道和滑行道标志及灯光 RWY and TWY marking and LGT	跑道标志 RWY markings	THR, RWY designation, edge line, RWY center line, TDZ, aiming point
		跑道灯光 RWY lights	RTHL, REDL, RCLL, RENL

		滑行道标志 TWY markings	Edge line, center line, RWY holding position
		滑行道灯光 TWY lights	Edge line lights(A, B, C, F)
3	停止排灯和跑道警戒灯 Stop bars and runway guard lights	Runway guard lights	
4	其它跑道保护措施 Other runway protection measures	Nil	
5	备注 Remarks	Nil	

**ZLDH AD 2.10 机场障碍物 Aerodrome obstacles**

半径 15 千米内主要障碍物

Obstacles within a circle with a radius of 15km centered on the ARP

障碍物名称 或编号 Obstacle ID/ Designation	障碍物类型 Obstacle type	障碍物位置 磁方位(°)/距离(m) Obstacle position MAG BRG(degree)/DIST(m)	标高或 (高) Elevation /(Height) (m)	障碍物标志, 灯光 类型及颜色 Obstacle marking /Lighting Type & Colour	影响的飞行程序及 起飞航径区/备注 Flight procedure/take-off path area affected & Remarks
1	2	3	4	5	6
Antenna 001	Antenna	064/3489	1163		
Antenna 002	Antenna	076/6011	1158		
Antenna 003	Antenna	078/5939	1160		Significant obstacle
BLDG 004	BLDG	082/7067	1137		
Antenna 005	Antenna	084/3000	1130	LGT	Significant obstacle
WATER_TOWER 006	WATER_TOWER	087/5942	1123		
MT 007	MT	133/14400	1575		
MT 008	MT	145/13200	1704		
MT 009	MT	157/13600	1781		

半径 15 千米内主要障碍物 Obstacles within a circle with a radius of 15km centered on the ARP					
障碍物名称 或编号 Obstacle ID/ Designation	障碍物类 型 Obstacle type	障碍物位置 磁方位(°)/距离(m) Obstacle position MAG BRG(degree)/DIST(m)	标高或 (高) Elevation /(Height) (m)	障碍物标志, 灯光 类型及颜色 Obstacle marking /Lighting Type & Colour	影响的飞行程序及 起飞航径区/备注 Flight procedure/take-off path area affected & Remarks
MT 010	MT	166/14100	1565		
MT 011	MT	208/14500	1633		
Antenna 012	Antenna	253/9874	1208		
WATER_TOWER 013	WATER_T OWER	255/12700	1179		
Antenna 014	Antenna	256/12700	1192		
BLDG 015	BLDG	256/12750	1195		
Antenna 016	Antenna	258/12099	1121		
Antenna 017	Antenna	258/14984	1148		
Antenna 018	Antenna	260/8542	1184		
Antenna 019	Antenna	262/9140	1202		Significant obstacle
Antenna 020	Antenna	264/2400	1142	LGT	RWY26 Take-off path
Antenna 021	Antenna	264/10454	1170		
WATER_TOWER 022	WATER_T OWER	267/4285	1147		
Antenna 023	Antenna	270/8744	1185		
Antenna 024	Antenna	274/5172	1168		
Antenna 025	Antenna	275/5008	1190		

半径 15 千米内主要障碍物 Obstacles within a circle with a radius of 15km centered on the ARP					
障碍物名称 或编号 Obstacle ID/ Designation	障碍物类型 Obstacle type	障碍物位置 磁方位(°)/距离(m) Obstacle position MAG BRG(degree)/DIST(m)	标高或 (高) Elevation /(Height) (m)	障碍物标志, 灯光 类型及颜色 Obstacle marking /Lighting Type & Colour	影响的飞行程序及 起飞航径区/备注 Flight procedure/take-off path area affected & Remarks
WATER_TOWER 026	WATER_T OWER	284/2503	1153		
WATER_TOWER 027	WATER_T OWER	289/1100	1153	LGT	Significant obstacle
Pole 028	Pole	303/695	1153	LGT	
Control TWR 029	Control TWR	304/695	1152	LGT	
WATER_TOWER 030	WATER_T OWER	325/850	1143		
Antenna 031	Antenna	340/1027	1166		Significant obstacle
Antenna 032	Antenna	348/1677	1168		
半径 15 千米-50 千米内主要障碍物 Obstacles between two circles with the radius of 15km and 50km centered on the ARP					
障碍物名称 或编号 Obstacle ID/ Designation	障碍物类型 Obstacle type	障碍物位置 磁方位(°)/距离(m) Obstacle position MAG BRG(degree)/DIST(m)	标高或 (高) Elevation /(Height) (m)	障碍物标志, 灯光 类型及颜色 Obstacle marking /Lighting Type & Colour	影响的飞行程序及 起飞航径区/备注 Flight procedure/take-off path area affected & Remarks
MT 033	MT	101/22300	1705		
MT 034	MT	118/21000	1938		
MT 035	MT	120/18900	1924		
MT 036	MT	134/16500	1921		
MT 037	MT	136/44000	1954		

半径 15 千米-50 千米内主要障碍物 Obstacles between two circles with the radius of 15km and 50km centered on the ARP					
障碍物名称 或编号 Obstacle ID/ Designation	障碍物类 型 Obstacle type	障碍物位置 磁方位(°)/距离(m) Obstacle position MAG BRG(degree)/DIST(m)	标高或 (高) Elevation /(Height) (m)	障碍物标志、灯光 类型及颜色 Obstacle marking /Lighting Type & Colour	影响的飞行程序及 起飞航径区/备注 Flight procedure/take-off path area affected & Remarks
MT 038	MT	163/35500	1878		
MT 039	MT	181/48500	1903		
MT 040	MT	188/31000	1822		
MT 041	MT	223/35700	1755		
MT 042	MT	235/29800	1537		
TOWER 043	TOWER	245/34591	1519	LGT	
STACK 044	STACK	252/19020	1238		
Antenna 045	Antenna	253/15650	1203	LGT	
Antenna 046	Antenna	254/20500	1242		
Remarks:					

## ZLDH AD 2.11 提供的气象情报、气象观测和报告

## Meteorological information provided &amp; meteorological observations and reports

提供的气象情报 Meteorological information provided		
1	相关气象台的名称 Associated MET Office	Dunhuang Mogao International Aerodrome MET Office
2	气象服务时间、服务时间以外的责任气象台 Hours of service/MET Office outside hours	H24
3	负责编发 TAF 的气象台、有效时段、发布间隔 Office responsible for TAF preparation/Periods of validity/Interval of issuance	Dunhuang Mogao International Aerodrome MET Office;24h;6h



4	趋势预报及发布间隔 Trend forecast/Interval of issuance	trend 1h
5	所提供的讲解或咨询服务 Briefing/Consultation provided	Briefing provided: P, T
6	飞行文件及其使用语言 Flight documentation/Language(s) used	Chart, Abbreviated Plain Language Text;Ch,En
7	讲解或咨询服务时可利用的图表和其它信息 Charts and other information available for briefing or consultation	Briefing provided: Synoptic charts, significant weather charts, upper W/T charts, satellite material, AWOS real-time data
8	提供气象情报的辅助设备 Supplementary equipment available for providing information	FAX, MET Service Terminal
9	提供气象情报的空中交通服务单位 ATS units provided with information	ARO, TWR
10	其他信息 Additional information	TEL: 86-937-5955665 or 86-937-5955661; FAX: 86-937-5955654
气象观测和报告 Meteorological observations and reports		
1	机场观测类型与频率、自动观测设备 Type & frequency of observation /Automatic observation equipment	Hourly plus special observation/Yes
2	气象报告类型及所包含的补充资料 Type of MET Report/Supplementary information included	METAR, SPECI
3	观测系统及安装位置 Observation system/Site(s)	RVR EQPT A: 95m N of RCL, 320m inward THR08 B: 95m N of RCL, 1930m inward THR26 C: 95m N of RCL, 330m inward THR26 SFC wind sensors: 08: 105m N of RCL, 330m inward THR08 08/26 Center: 105m N of RCL, 1890m inward THR26 26: 105m N of RCL, 300m inward THR26 Ceilometer 08: 10m S of RCL, 1010m outward THR08 26: 50m N of RCL, 1000m outward THR26
4	观测系统的工作时间 Hours of operation for meteorological observation system	H24
5	气候资料 Climatological information	Climatology
6	其他信息	Nil

	Additional information
--	------------------------

### ZLDH AD 2.12 跑道物理特征 Runway physical characteristics

跑道号码 RWY Designator	真方位和 磁方位 TRUE & MAG BRG	跑道长宽 Dimensions of RWY(m)	跑道强度、跑道和停 止道道面 RWY strength/ Surface of RWY /SWY	跑道入口坐标、 跑道末端坐标、 跑道入口大地水 准面波幅 THR coordinates & RWY end coordinates & THR geoid undulation	跑道入口标高和 精密进近跑道接 地带最高标高 THR elevation & highest elevation of TDZ of precision APP RWY	跑道和停止道坡 度 Slope of RWY/SWY
1	2	3	4	5	6	7
08	084.16° GEO 084° MAG	3400×45	PCR 1510/F/C/X/T ASPH/-	Nil	THR 1124.7m	-0.17%
26	264.16° GEO 264° MAG	3400×45	PCR 1510/F/C/X/T ASPH/-	Nil	THR 1118.9m	0.17%
跑道号码 RWY Designator	停止道长宽 SWY dimensions (m)	净空道长宽 CWY dimensions (m)	升降带长宽 Strip dimensions (m)	跑道端安全区 长宽 RESA dimensions (m)	拦阻系统的 位置及描述 Location & Description of arresting system	无障碍物区 OFZ
1	8	9	10	11	12	13
08	Nil	Nil	3520×300	280×150	Nil	Nil
26	Nil	Nil	3520×300	280×150	Nil	Nil
Remarks: Nil						

### ZLDH AD 2.13 公布距离 Declared distances

跑道号码 RWY Designator	可用起飞滑跑距离 TORA(m)	可用起飞距离 TODA(m)	可用加速停止距离 ASDA(m)	可用着陆距离 LDA(m)	备注 Remarks
1	2	3	4	5	6
08	3400	3400	3400	3400	Nil
26	3400	3400	3400	3400	Nil

**ZLDH AD 2.14 进近和跑道灯光 Approach and runway lighting**

跑道 号码 RWY Desig nator	进近灯 类型、长 度、强度 APCH LGT type/ LEN/ /INTST	入口灯 颜色、翼 排灯 THR LGT colour/ WBAR	目视进近坡度 指示系统类 型、位置、仰 角、跑道入口 最低眼高 Type of VASIS/Position /Angle/MEHT	接地 带 灯长 度 TDZ LGT LEN	跑道中线灯长度、 间隔、颜色、强度 RWY center line LGT LEN/Spacing /Colour/INTST	跑道边灯长度、间 隔、颜色、强度 RWY edge LGT LEN/Spacing /Colour/INTST	跑道末端灯 颜色 RWY end LGT colour	停止道灯长 度、颜色 SWY LGT LEN /Colour
1	2	3	4	5	6	7	8	9
08	PALS CAT I SFL 900 m LIH	GREEN Nil	PAPI LEFT 320m inward THR08 3° 16.0m	Nil	3400 m spacing 30m 0-3100m, WHITE 3100-3400m, RED LIH	3400 m spacing 60m 0-2800m, WHITE 2800-3400m, YELLOW LIH	RED	Nil
26	PALS CAT I SFL 900 m LIH	GREEN Nil	PAPI LEFT 320m inward THR26 3° 18.3m	Nil	3400 m spacing 30m 0-3100m, WHITE 3100-3400m, RED LIH	3400 m spacing 60m 0-2800m, WHITE 2800-3400m, YELLOW LIH	RED	Nil
Remarks:								

**ZLDH AD 2.15 其它灯光,备份电源 Other lighting, secondary power supply**

1	机场灯标或识别灯标位置、特性和工作时间 ABN/IBN location, characteristics and hours of operation	Nil
2	着陆方向标和风向标位置和灯光 LDI/ WDI location and LGT	Nil
3	滑行道边灯和滑行道中线灯 TWY edge and center line lighting	TWYs A, B, C, F: blue edge line lights
4	备份电源及转换时间 Secondary power supply/Switch-over time	Secondary power supply available, diesel generator / <13 sec
5	备注 Remarks	Nil

**ZLDH AD 2.16 直升机着陆区域 Helicopter landing area**

1	TLOF 坐标或 FATO 入口坐标及大地水准面波幅 Coordinates TLOF or THR of FATO, Geoid undulation	Nil
2	TLOF 和 (或) FATO 标高 TLOF and/or FATO elevation	Nil
3	TLOF 和 FATO 区域范围、道面、强度和标志 TLOF and FATO area dimensions,surface, strength, marking	Nil
4	FATO 的真方位和磁方位 True and MAG BRG of FATO	Nil
5	公布距离 Declared distance available	Nil
6	进近灯光和 FATO 灯光 APP and FATO lighting	Nil
7	备注 Remarks	Nil

**ZLDH AD 2.17 空中交通服务空域 ATS airspace**

空域名称和水平范围 Designation and lateral limits		垂直范围 Vertical limits	空域分类 Airspace class	空中交通服务单位呼号和使用语言 ATS unit callsign Language	工作时间 Hours of applicability	备注 Remarks
1	2	3	4	5	6	7
Dunhuang tower control area	A circle with a radius of 55km centered on the RWY center	Below 6000m (inclusive)				
Altimeter setting region and TL/TA	A circle with a radius of 55km centered on Dunhuang VOR/DME	TL 3600m TA 3000m 3300m(QNH≥1031hPa) 2700m(QNH≤979hPa)				

**ZLDH AD 2.18 空中交通服务通信设施 ATS communication facilities**

服务名称 Service designation	呼号 Callsign	频率 Frequency (MHz)	卫星话音通信 号码 SATVOICE number	登录地址 Logon address	工作时间 Hours of operation	备注 Remarks
1	2	3	4	5	6	7
TWR	Dunhuang Tower	118.6 (130.0)			H24	
EMG		121.5			H24	

**ZLDH AD 2.19 无线电导航和着陆设施 Radio navigation and landing aids**

设施名称及类型、磁差、支持运行类别、VOR/ILS 磁偏角 Name and type of aid, VAR, Type of supported OPS, Declination of VOR/ILS	识别 ID	频率、波道 Frequency/ Channel number	工作时间 Hours of operation	发射天线坐标及相对位置 Coordinates of transmitting antenna/ Position	DME 发射 天线标高 Elevation of DME transmitting antenna	备注 Remarks
1	2	3	4	5	6	7
Dunhuang VOR/DME	DNH	115.5 MHz CH 102X	H24	N40°09.8' E094°50.7' On the extension of RCL, 1000m outward THR26	1122 m	
LOC 08 ILS CAT I	IMG	109.3 MHz		280m outward RWY08 end		Beyond 23NM and 020° rightside of front course U/S
GP 08		332.0 MHz		301m inward THR08, 120m from RCL		Angle 3° RDH 15m
DME 08	IMG	CH 30X (109.3 MHz)			1133m	Co-located with GP 08
LOC 26 ILS CAT I	IDH	108.7 MHz		280m outward RWY26 end		Beyond 025° leftside of front course U/S
GP 26		330.5 MHz		277m inward THR26, 120m from RCL		Angle 3° RDH 15m
DME 26	IDH	CH 24X (108.7 MHz)			1129m	Co-located with GP 26

**ZLDH AD 2.20 本场规定****ZLDH AD 2.20 Local aerodrome regulations****1. 机场使用规定**

无

**1. Airport operations regulations**

Nil

**2. 跑道和滑行道的使用**

2.1 夏、秋季航空器着陆掉头，具体情况听从 ATC 指挥。

**2. Use of runways and taxiways**

2.1 Landing aircrafts shall follow ATC instructions to turn around on RWY in summer and autumn.

2.2 航空器滑行速度一般不得大于 30km/h，在障碍物附近滑行速度不超过 15km/h。

2.2 Aircraft taxiing speed limit is no more than 30km/h. And the taxiing speed should be no more than 15km/h near the OBST.

**2.3 滑行道翼展限制****2.3 Wingspan limits for TWYs**

滑行道/TWYs	航空器翼展限制 ( m ) /Wing span limits for aircraft(m)
C	≤65
B	≤61
A, E, F, N1, N2	≤36

**3. 机坪和机位的使用**

3.1 飞行区机坪的所有进港航空器均实施引导车引导。

**3. Use of aprons and parking stands**

3.1 Arrival aircraft parking on apron shall follow the guidance of follow-me vehicle to stands.

3.2 航空器在机坪内进行发动和试车，需经管制许可，在指定地点进行。

3.2 Engine run-ups are subject to Ground Control clearance, and shall be carried out at a designated location.

3.3 未经管制同意，严禁航空器利用自身动力倒滑。

3.3 Aircraft is strictly forbidden to taxi backward on its own power without ATC permission.

3.4 航空器翼展限制及进出机位方式

3.4 Wing span limits for aircraft and limitation for aircraft enter/exit stands

停机位编号/Stands Nr.	航空器翼展限制/Wingspan limits for aircraft	滑入、滑出方式/Enter or exit
301-302	≤36m	Taxi in and be pushed back
303-304	≤52m	

3.5 04号停机位滑出仅限左转，05号停机位滑出仅限右转。

3.5 Aircraft taxiing out from stand Nr.04 shall turn left only, aircraft taxiing out from stand Nr.05 shall turn right only.

**4. 低能见度运行**

**4. Low visibility operation**

无

Nil

**5. 直升机飞行限制，直升机停靠区**

**5. Helicopter operation restrictions and helicopter parking/docking area**

无

Nil

**6. 警告**

**6. Warning**

无

Nil

**ZLDH AD 2.21 减噪程序**

**ZLDH AD 2.21 Noise abatement procedures**

无

Nil

**ZLDH AD 2.22 飞行程序**

**ZLDH AD 2.22 Flight procedures**

**1. 总则**

**1. General**

无

Nil

**2. 起落航线**

**2. Traffic circuits**

2.1 起落航线通常在跑道北侧进行，经管制员允许亦可在跑道南侧进行。

2.1 Traffic circuits shall be made on the north of RWY, with ATC clearance it could be made on the south of RWY;

2.2 起落航线高度:A、B类为1500m，C、D类为

2.2 Altitude of traffic circuits:1500m for CAT A/B,

1600m。

1600m for CAT C/D.

### 3. 仪表飞行程序

### 3. IFR flight procedures

无

Nil

### 4. 雷达程序和/或 ADS-B 程序

### 4. Radar procedures and/or ADS-B procedures

无

Nil

### 5. 无线电通信失效程序

### 5. Radio communication failure procedures

参见 AIP GEN3.4.5 中的仪表飞行规则航空器地空双向无线电通信失效通用程序。

Refer to AIP GEN3.4.5 general procedures for aircraft under instrument flight rule with air-ground two-way radio communication failure.

### 6. 目视飞行程序

### 6. Procedures for VFR flights

在敦煌机场 234°磁方位，13km 处有一通航起降点，飞行高度真高 500m（含）以下，航空器目视飞行时注意观察。

Caution: A general aviation take-off and landing point is located on the radial 234°MAG of Dunhuang airport, with distance of 13km. The flight height is 500m (inclusive) and below.

### 7. 目视飞行航线

### 7. VFR route

无

Nil

### 8. 其它规定

### 8. Other regulations

无

Nil

## ZLDH AD 2.23 其它资料

## ZLDH AD 2.23 Other information

### 鸟情资料

### Bird's information

全年有鸟类活动。主要以中型鸟和小型鸟为主。机场当局采取了驱赶措施，以减少鸟群活动。

Activities of bird flocks are found in the whole year. Small and medium-sized birds are in the majority. Authority resorts to dispersal methods to reduce bird activities.

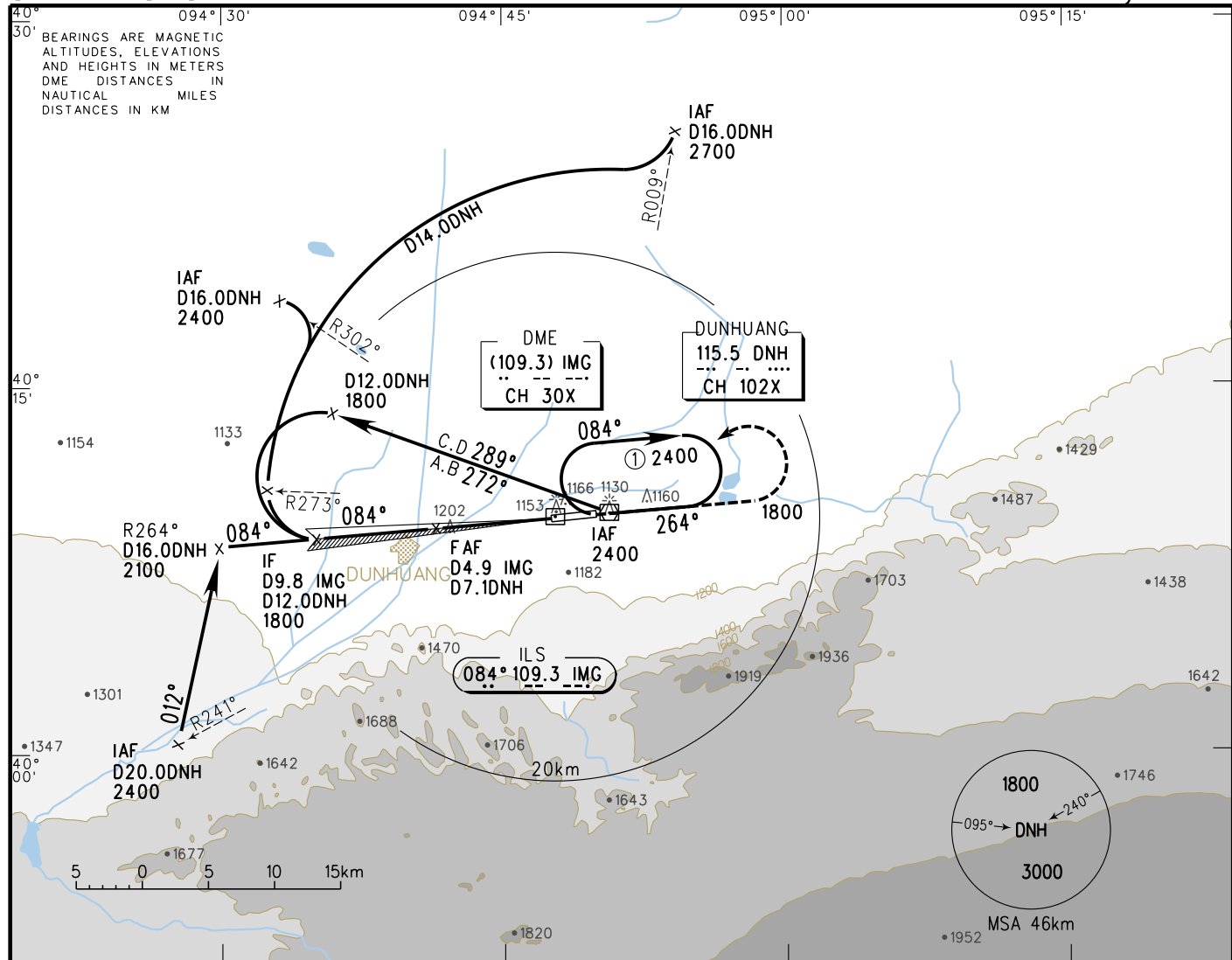


Activity season	Activity time	Flight height(m)	Characteristic
All seasons	22:00-03:00 10:00-13:00	0-30	Small size
Spring, summer and autumn	14:00-21:00	0-10	Small mammal
All seasons	22:00-03:00 10:00-13:00	0-30	Medium size
Spring, summer and autumn	22:00-13:00	0-30	Medium size
Spring, summer and autumn	14:00-21:00	0-30	Medium size
Summer	22:00-13:00	0-10	Medium size
Spring, summer and autumn	22:00-13:00	0-100	Large size

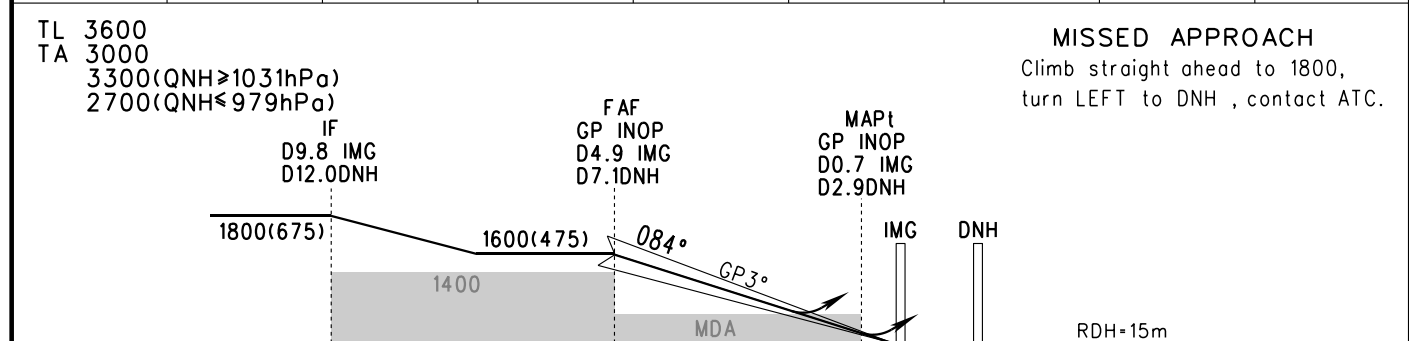
# INSTRUMENT APPROACH CHART-ICAO

VAR0.7°E AERODROME ELEV 1124.7 THR RWY08 ELEV 1124.7 TWR 118.6(130.0)

ZLDH DUNHUANG/Mogoo ILS/DME y RWY08



GP INOP	DME (IMG) (NM)	7	6	5	4	3	2	1
	ALT (m)				1512	1415	1318	



	A	B	C	D	FAF-MAPt(GP INOP) 7.8km						
					GS in kt	100	120	140	160	180	
ILS/DME DA(H) RVR/VIS ⑤		1185(60) 550/800			80 150	100 185	120 220	140 260	160 295	180 335	
GP INOP MDA(H) VIS		1280(156) 2100			Time min:sec	3:10	2:32	2:06	1:48	1:35	1:24
CIRCLING MDA(H) VIS	1285(161) 2200		1355(231) 3500	1495(371) 5000	Rate of descent m/s	2.2	2.7	3.2	3.8	4.3	4.9

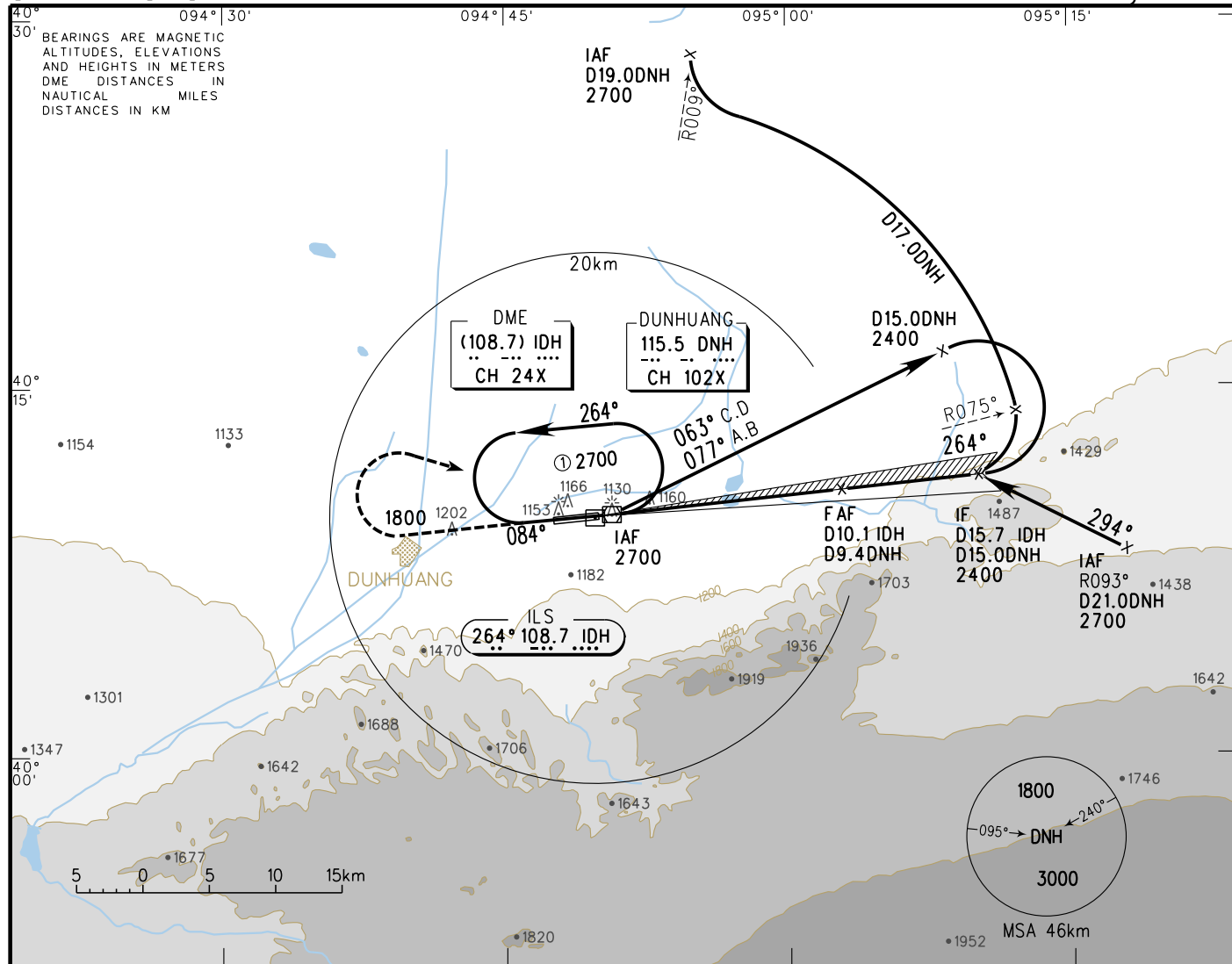
⑤ HUD Special CAT I: (DH)(45),(RA)(47),RVR450.  
Changes: Airport Name.

# INSTRUMENT APPROACH CHART-ICAO

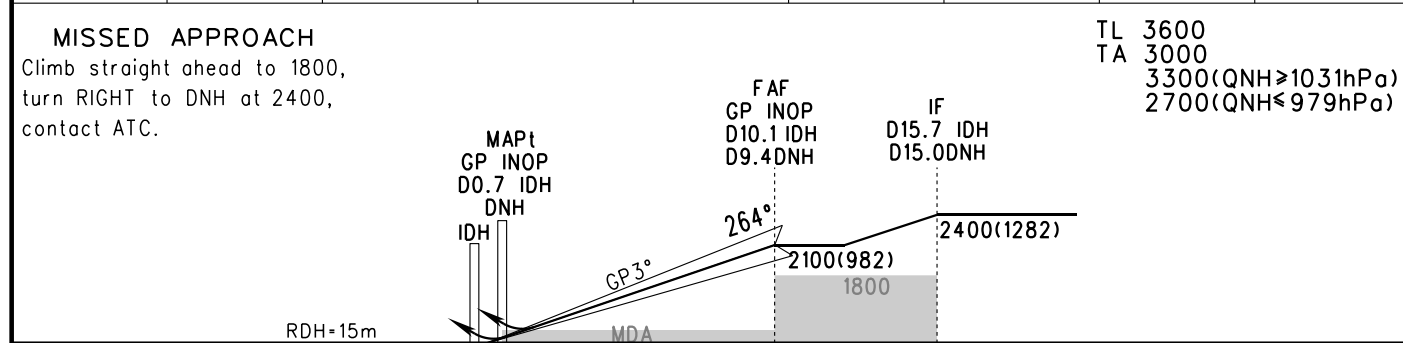
VAR 0.7° E    AERODROME ELEV 1124.7    THR RWY 26 ELEV 1118.9    TWR 118.6(130.0)

## ZLDH DUNHUANG/Mogoo

ILS/DME y RWY 26



GP INOP	DME (IDH) (NM)	2	4	6	8	10	12	14
	ALT (m)	1312	1506	1701	1895	2089		



	A	B	C	D	FAF-MAPt(GP INOP) 17.4km								
ILS/DME	DA(H) RVR/VIS	1179(60) 550/800			GS in	kt	80	100	120	140	160	180	
	⊙				km/h	150	185	220	260	295	335		
GP INOP	MDA(H) VIS	1250(131) 1600			Time	min:sec	7:03	5:38	4:42	4:02	3:31	3:08	
CIRCLING	MDA(H) VIS	1285(161) 2200	1355(231) 3500	1495(371) 5000	Rate of descent	m/s	2.2	2.7	3.2	3.8	4.3	4.9	

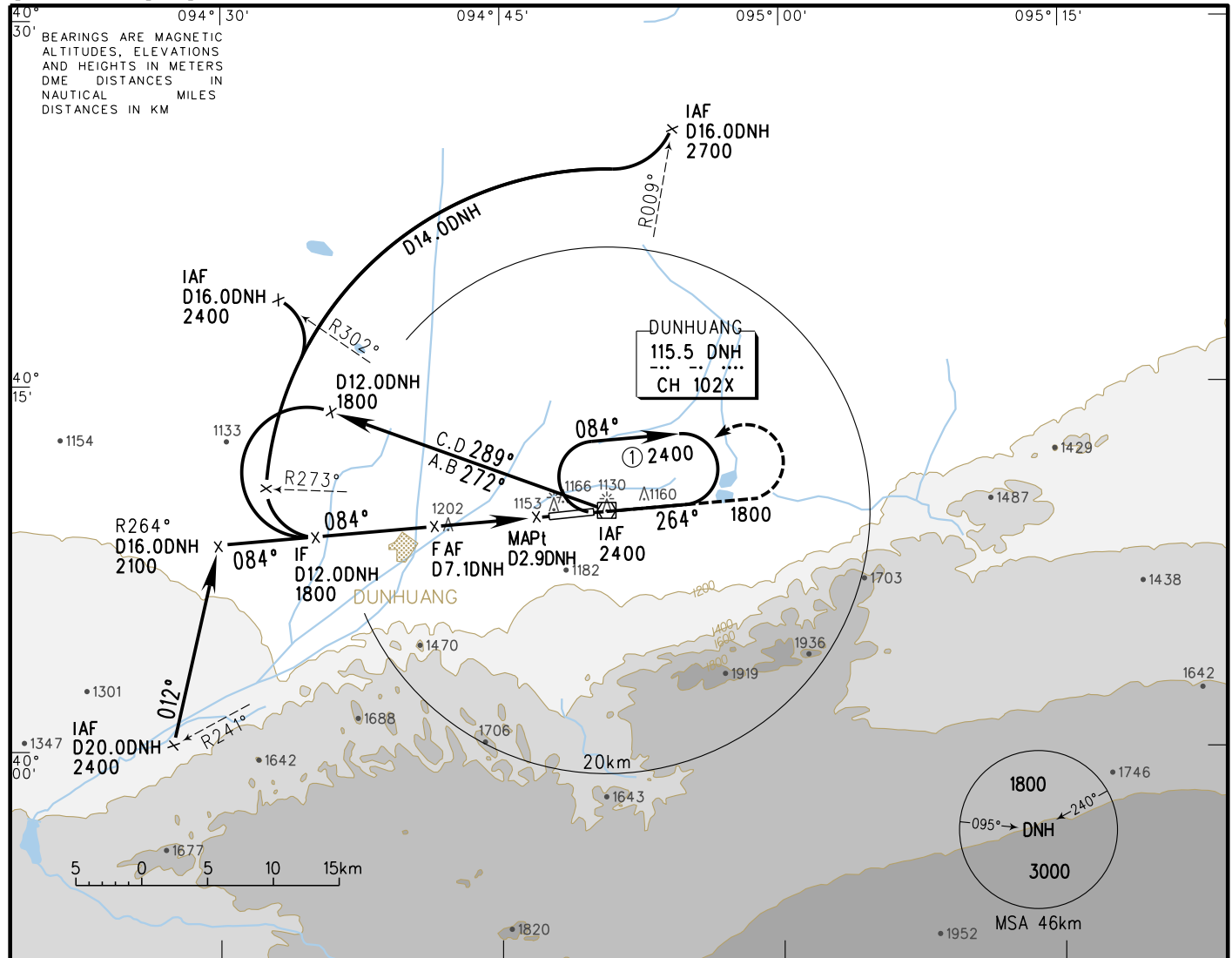
⊙ HUD Special CAT I: (DH)(45),(RA)(48),RVR450.  
Changes: Airport Name.

# INSTRUMENT APPROACH CHART-ICAO

VAR 0.7° E    AERODROME ELEV 1124.7    THR RWY08 ELEV 1124.7    TWR 118.6(130.0)

ZLDH DUNHUANG/Mogoo

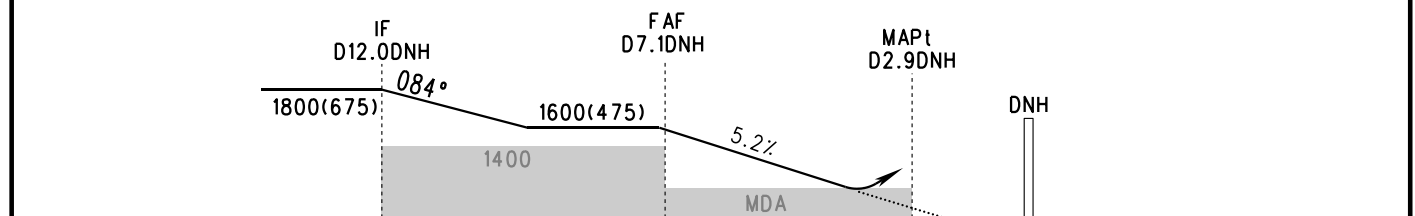
VOR/DME RWY08



DME (DNH) (NM)	8	7	6	5	4	3	2	1
ALT (m)		1589	1491	1394	1297			

TL 3600  
TA 3000  
3300(QNH≥1031hPa)  
2700(QNH≤979hPa)

**MISSED APPROACH**  
Climb straight ahead to 1800, turn LEFT to DNH, contact ATC.

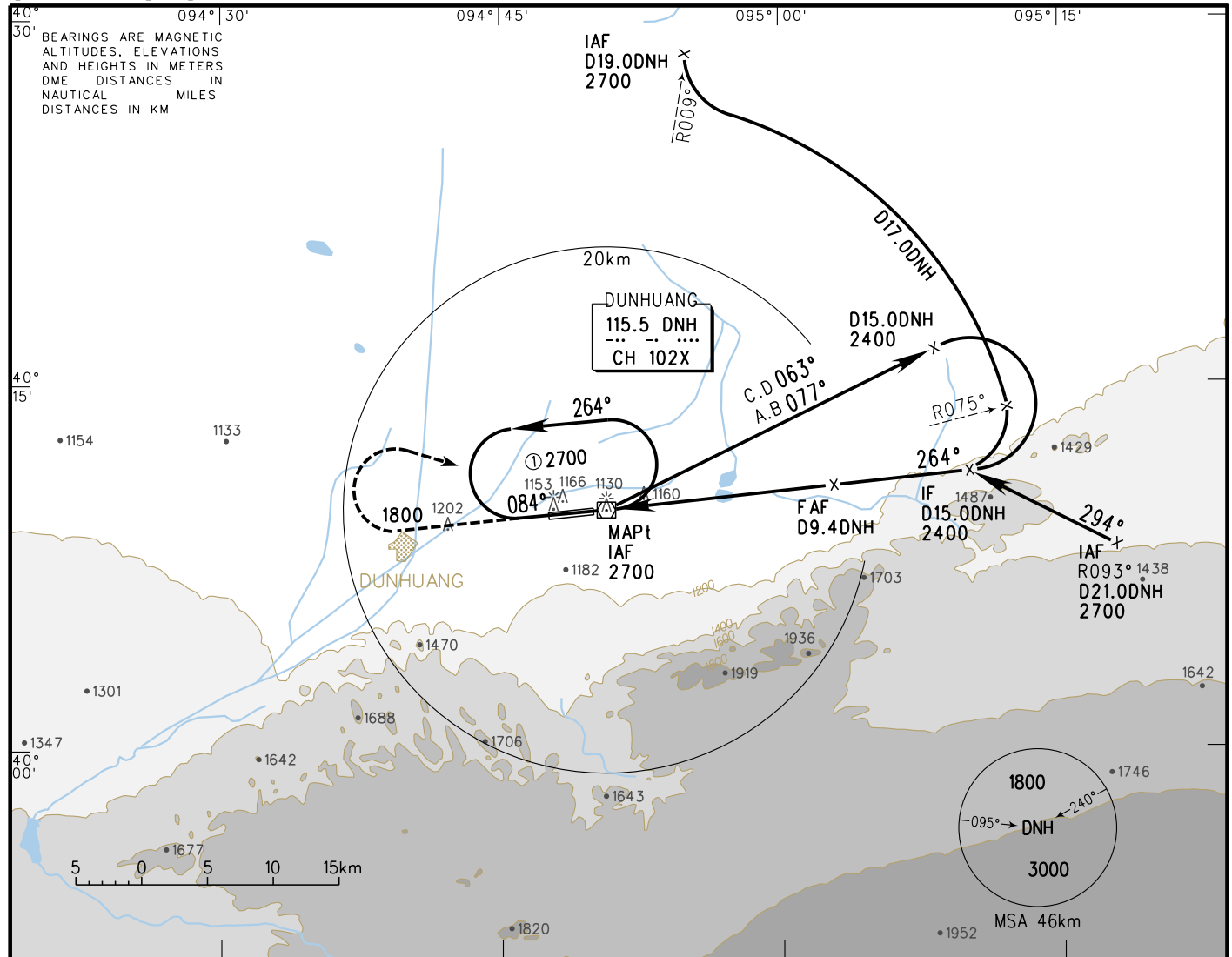


	A	B	C	D	FAF-MAPt 7.8km						
VOR/DME MDA(H) VIS	1280(156) 2100				GS in kt	80	100	120	140	160	180
					km/h	150	185	220	260	295	335
CIRCLING MDA(H) VIS	1285(161) 2200	1355(231) 3500		1495(371) 5000	Time min:sec	3:10	2:32	2:06	1:48	1:35	1:24
					Rate of descent m/s	2.2	2.7	3.2	3.8	4.3	4.9

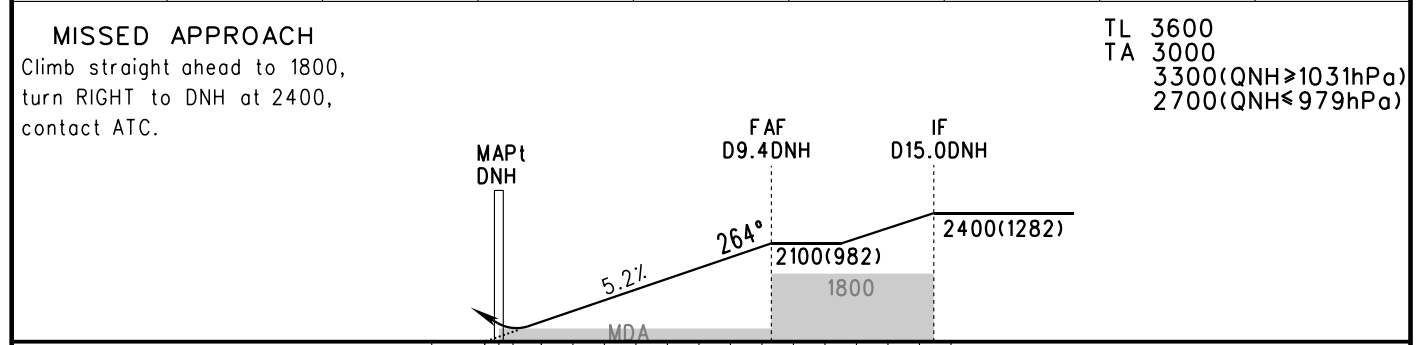
Changes: Airport Name.

# INSTRUMENT APPROACH CHART-ICAO

VAR 0.7° E    AERODROME ELEV 1124.7    THR RWY 26    ELEV 1118.9    TWR 118.6(130.0)    ZLDH DUNHUANG/Mogoo    VOR/DME RWY 26



DME (DNH) (NM)	1	3	5	7	9	11	13	15
ALT (m)	1283	1477	1672	1866	2060			



	A	B	C	D	FAF - MAPt 17.4km							
VOR/DME MDA(H) VIS	1250(131) 1600				GS in kt	80	100	120	140	160	180	
					km/h	150	185	220	260	295	335	
CIRCLING MDA(H) VIS	1285(161) 2200		1355(231) 3500	1495(371) 5000	Time min:sec	7:03	5:38	4:42	4:02	3:31	3:08	
					Rate of descent m/s	2.2	2.7	3.2	3.8	4.3	4.9	

Changes: Airport Name.

yinlei.org为航空和飞行模拟爱好者整理，本资料请不要用于实际飞行

# AERODROME CHART

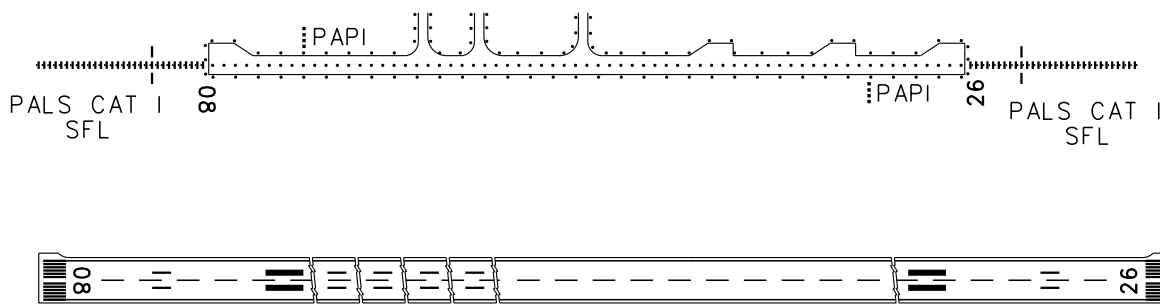
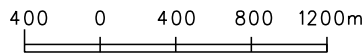
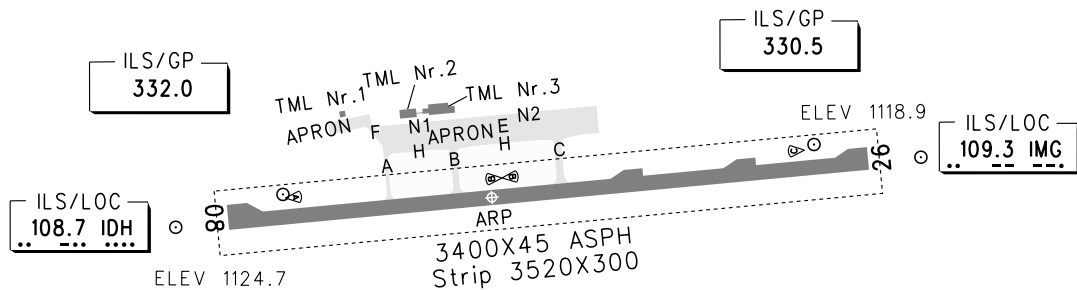
TWR 118.6(130.0)

## ZLDH DUNHUANG/Mogao

N40°09.8'E094°48.6' ELEV 1124.7m

BEARINGS ARE MAGNETIC.  
ALTITUDES, DISTANCES,  
ELEVATIONS AND HEIGHTS  
IN METERS.

RWY	Direction	Bearing strength
08	084°	PCR 1510/F/C/X/T: RWY08/26 ASPH PCR 1010/F/C/X/T: TWY A, B, C PCR 760/R/A/W/T: TWY F, N1 PCR 720/R/A/W/T: TWY E, H, N2
26	264°	



TAKE-OFF MINIMA(WITH RELIABLE ALTN)(m)				LIGHTS		
ACFT Type	RWY08		RWY26		RWY08	RWY26
	REDL	NIL(Day only)	REDL	NIL(Day only)		
2 TURB ENG or 3&4 ENG	A				PALS CAT I SFL PAPI REDL RCLL RENL	PALS CAT I SFL PAPI REDL RCLL RENL
	B	RVR400	RVR500	RVR400		
	C	VIS800	VIS800	VIS800		
	D					
Other 1&2 ENG	VIS1600					

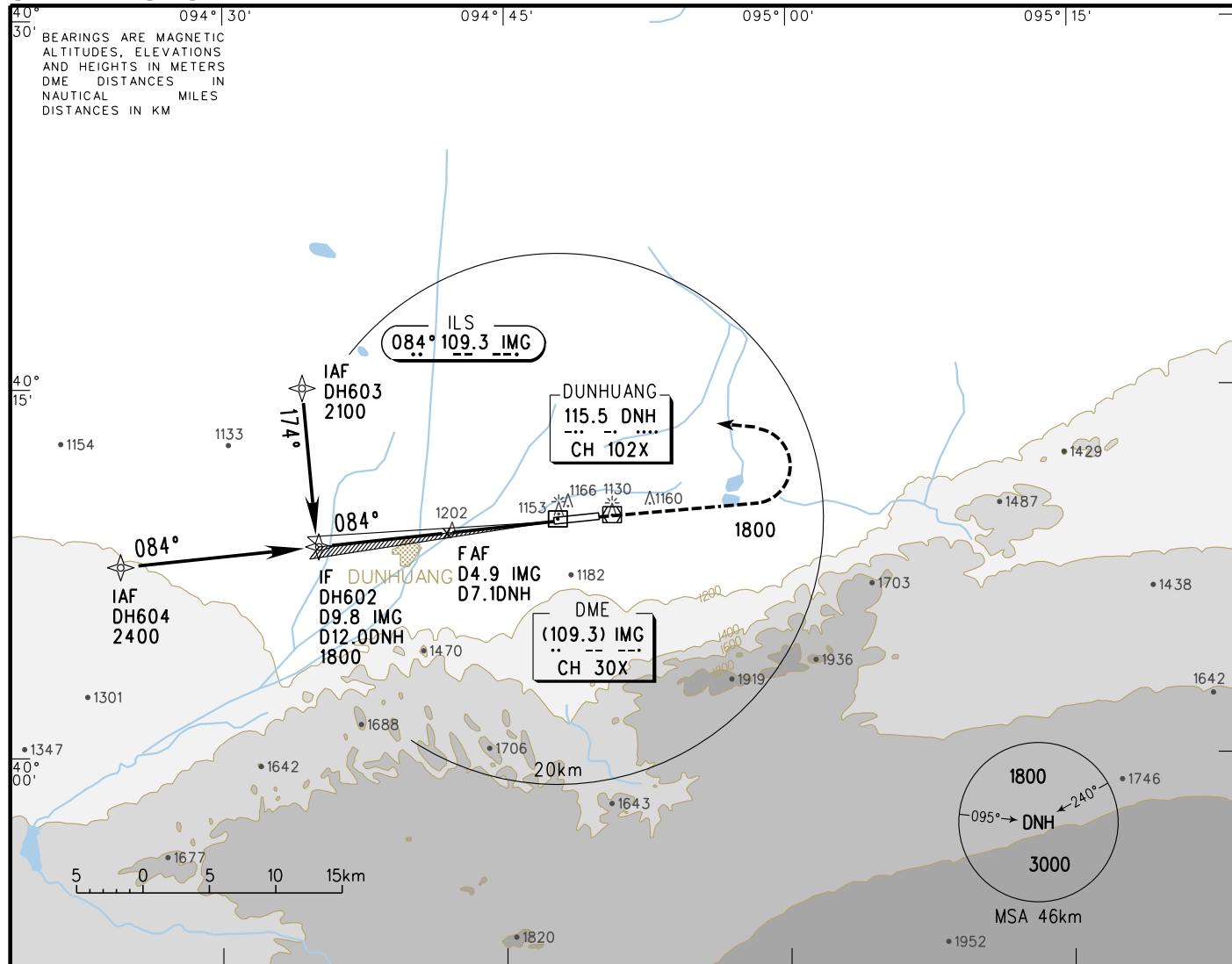
Note: Nil.

Changes: PCR.

# INSTRUMENT APPROACH CHART-ICAO

VAR0.7°E AERODROME ELEV 1124.7 THR RWY08 ELEV 1124.7 TWR 118.6(130.0)

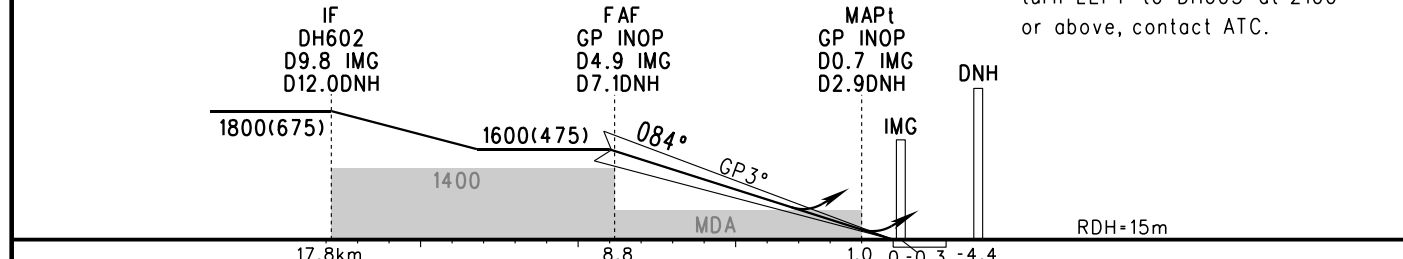
ZLDH DUNHUANG/Mogoo RNP ILS/DME z RWY08



GP INOP	DME (IMG) (NM)	7	6	5	4	3	2	1
	ALT (m)				1512	1415	1318	

TL 3600  
TA 3000  
3300(QNH≥1031hPa)  
2700(QNH≤979hPa)

**MISSED APPROACH**  
Climb straight ahead to 1800, turn LEFT to DH603 at 2100 or above, contact ATC.

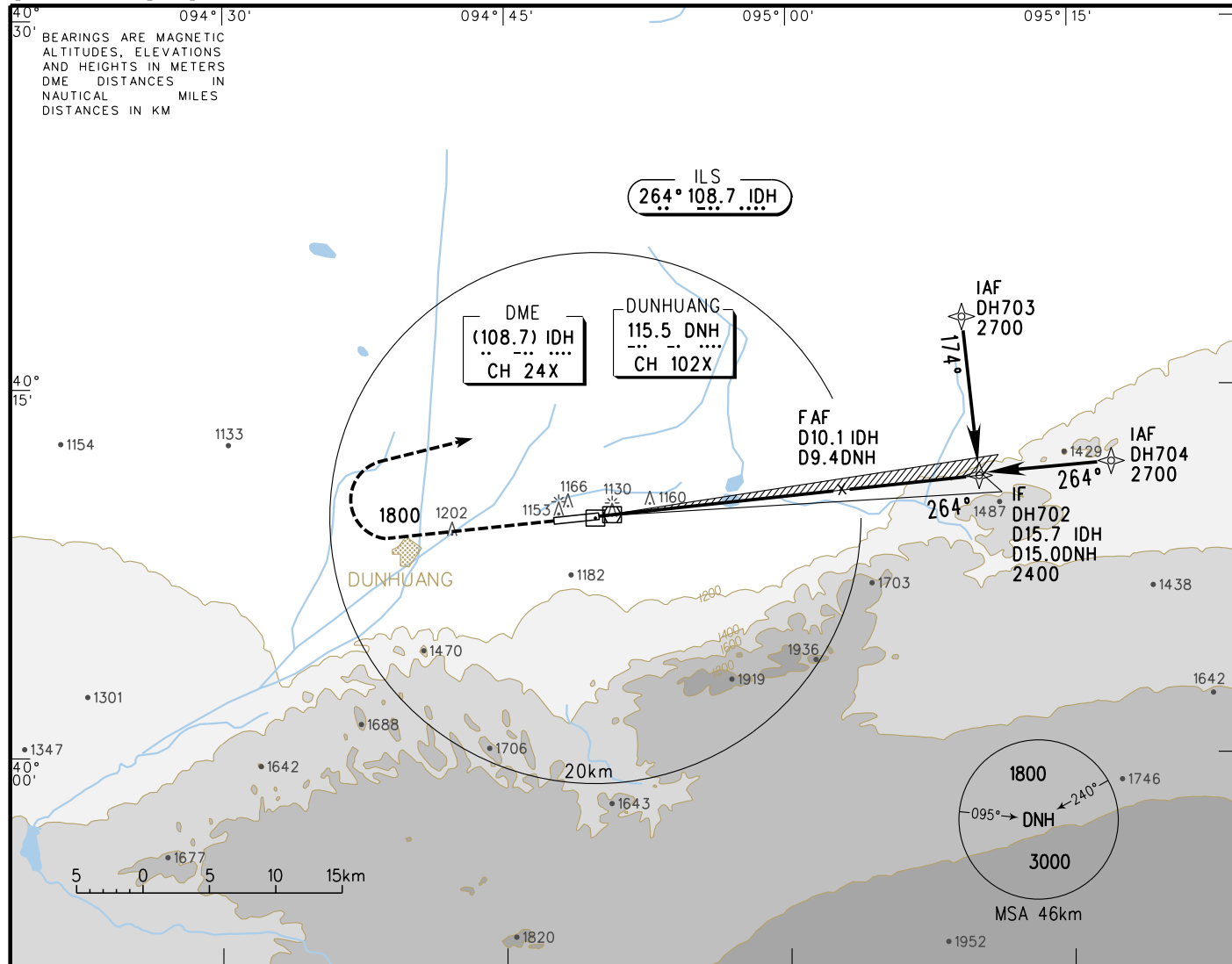


	A	B	C	D	FAF-MAPt(GP INOP) 7.8km							
ILS/DME DA(H) RVR/VIS		1185(60) 550/800			GS in	80	100	120	140	160	180	
					kt	150	185	220	260	295	335	
GP INOP MDA(H) VIS		1280(156) 2100			Time	min:sec	3:10	2:32	2:06	1:48	1:35	1:24
					Rate of descent	m/s	2.2	2.7	3.2	3.8	4.3	4.9
CIRCLING MDA(H) VIS	1285(161) 2200	1355(231) 3500		1495(371) 5000	● HUD Special CAT I: (DH)(45),(RA)(47),RVR450. Changes: Airport Name.							

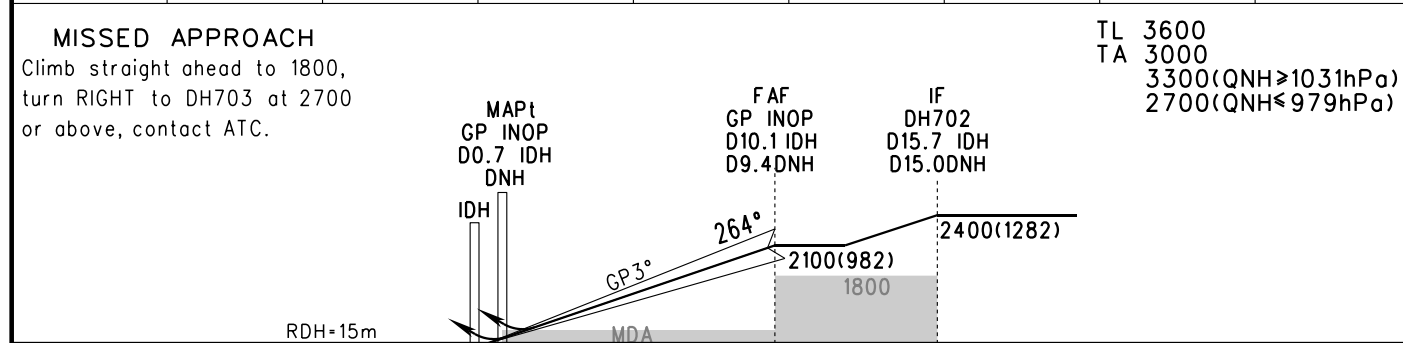
# INSTRUMENT APPROACH CHART-ICAO

VAR 0.7° E AERODROME ELEV 1124.7 THR RWY26 ELEV 1118.9 TWR 118.6(130.0)

ZLDH DUNHUANG/Mogoo RNP ILS/DME z RWY26



GP INOP	DME (IDH) (NM)	2	4	6	8	10	12	14
	ALT (m)	1312	1506	1701	1895	2089		



	A	B	C	D	FAF-MAPt(GP INOP) 17.4km								
ILS/DME DA(H) RVR/VIS	1179(60) 550/800				GS in kt	80	100	120	140	160	180		
					km/h	150	185	220	260	295	335		
GP INOP MDA(H) VIS	1250(131) 1600				Time min:sec	7:03	5:38	4:42	4:02	3:31	3:08		
					Rate of descent m/s	2.2	2.7	3.2	3.8	4.3	4.9		
CIRCLING MDA(H) VIS	1285(161) 2200		1355(231) 3500		1495(371) 5000								

• HUD Special CAT I: (DH)(45),(RA)(48),RVR450.  
Changes: Airport Name.

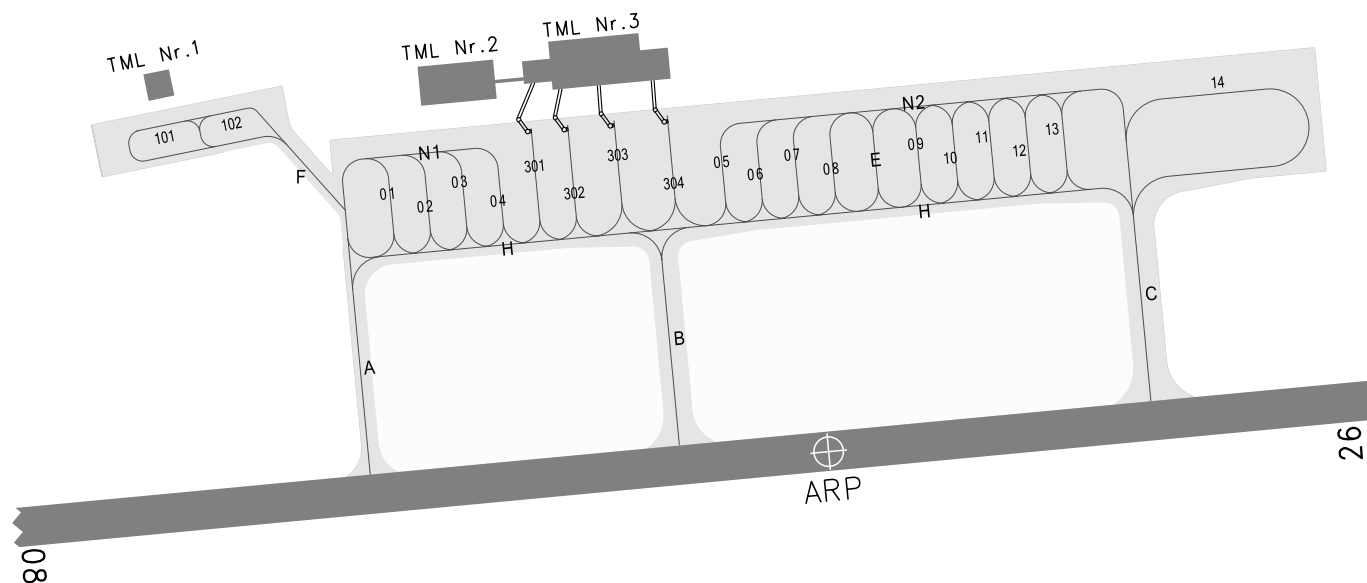


AIRCRAFT PARKING  
CHART-ICAO

TWR 118.6(130.0)

ZLDH DUNHUANG/Mogao

PCR 760/R/A/W/T: Stands Nr.01-05, 301-304  
PCR 730/R/A/W/T: Stands Nr.101, 102  
PCR 720/R/A/W/T: Stands Nr.06-14



Changes: PCR.

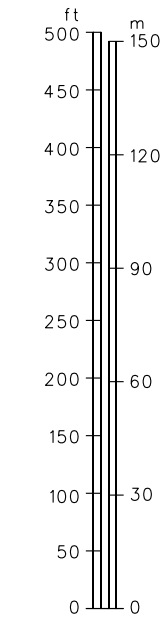
# AERODROME OBSTACLE CHART-ICAO

TYPE A (OPERATING LIMITATIONS)

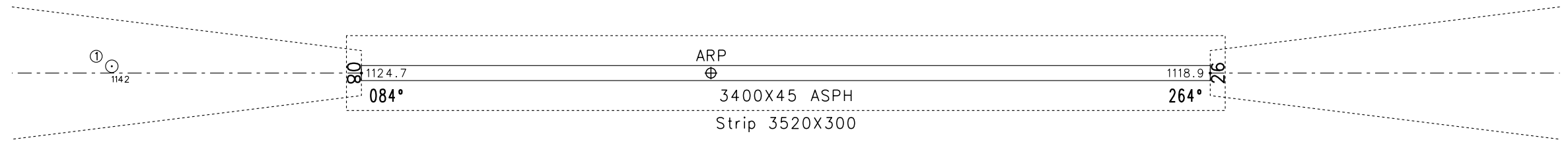
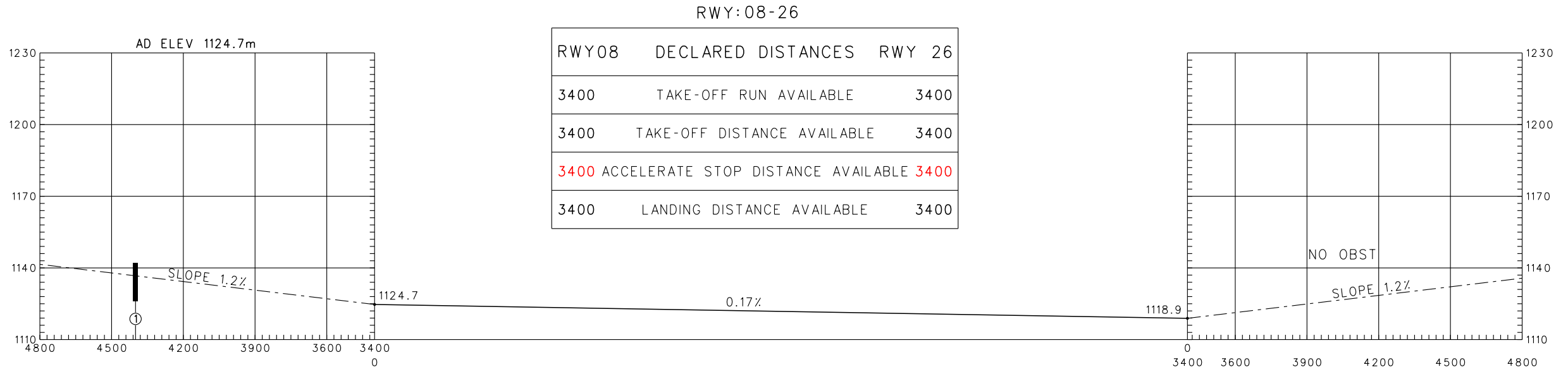
ZLDH DUNHUANG/Mogao

DIMENSIONS AND ELEVATIONS IN METERS BEARINGS ARE MAGNETIC

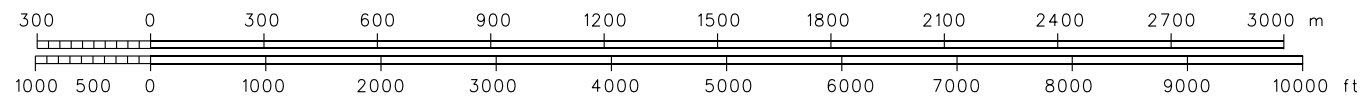
MAGNETIC VARIATION 0.7° E



VERTICAL SCALE 1:2000



HORIZONTAL SCALE 1:20000



LEGEND	
①	OBST NR
⊙	POLE

AMENDMENT RECORD		
NR	DATE	ENTERED BY

Changes: Delete SWY, Accelerate stop distance available.

# STANDARD DEPARTURE CHART - INSTRUMENT

VAR 0.7° E

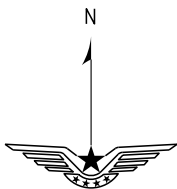
TWR 118.6(130.0)

ZLDH DUNHUANG/Mogao

RWY08

BEARINGS ARE MAGNETIC  
ALTITUDES, ELEVATIONS  
AND HEIGHTS IN METERS  
DME DISTANCES IN  
NAUTICAL MILES  
DISTANCES IN KM

TL 3600  
TA 3000  
3300(QNH ≥ 1031hPa)  
2700(QNH ≤ 979hPa)



NOT TO SCALE

BIKNO  
N40 54.9  
E093 50.9

NUKTI  
N41 51.7  
E095 12.0

118  
BIKNO-01D

NUKTI-01D

R009° 009°

BIKNO-01D  
TUSLI-01D  
VIKUP-01D

314°  
241°  
084°  
139°  
315°  
1800

249  
TUSLI-01D

DUNHUANG  
115.5 DNH  
CH 102X  
N40 09.8E094 50.7

R125°  
D40.0DNH  
N39 46.5  
E095 32.9  
**4800**

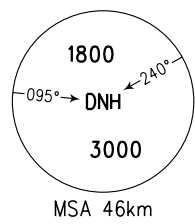
TOSAP  
N39 57.4  
E095 04.8

117°  
45  
VIKUP-01D

TUSLI  
N39 05.0  
E092 18.0

VIKUP  
N39 33.8  
E096 06.2

- Note:
1. Departure turn MAX IAS 380km/h.
  2. Minimum climb gradient 3.8% for VIKUP-01D.



Changes: Airport Name.

# STANDARD DEPARTURE CHART - INSTRUMENT

VAR 0.7° E

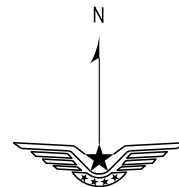
TWR 118.6(130.0)

ZLDH DUNHUANG/Mogao

RWY 26

BEARINGS ARE MAGNETIC  
ALTITUDES, ELEVATIONS  
AND HEIGHTS IN METERS  
DME DISTANCES IN  
NAUTICAL MILES  
DISTANCES IN KM

TL 3600  
TA 3000  
3300(QNH ≥ 1031hPa)  
2700(QNH ≤ 979hPa)



NOT TO SCALE

BIKNO  
N40 54.9  
E093 50.9

NUKTI  
N41 51.7  
E095 12.0

191  
NUKTI-11D

314°  
R314°  
BIKNO-11D

1800  
NUKTI-11D  
VIKUP-11D

DUNHUANG  
115.5 DNH  
CH 102X  
N40 09.8E094 50.7

200°  
2100  
200°  
R241°  
TUSLI-11D

139°  
31

R125°  
D40.0DNH  
N39 46.5  
E095 32.9  
**4800**

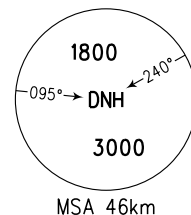
TOSAP  
N39 57.4  
E095 04.8

45  
VIKUP-11D

TUSLI  
N39 05.0  
E092 18.0

- Note:
1. Departure turn at 1800m MAX IAS 380km/h.
  2. Minimum climb gradient 3.8% for VIKUP-11D.

VIKUP  
N39 33.8  
E096 06.2



Changes: Airport Name.

# STANDARD DEPARTURE CHART - INSTRUMENT

VAR 0.7° E

TWR 118.6(130.0)

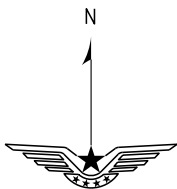
ZLDH DUNHUANG/Mogao

RNP RWY08

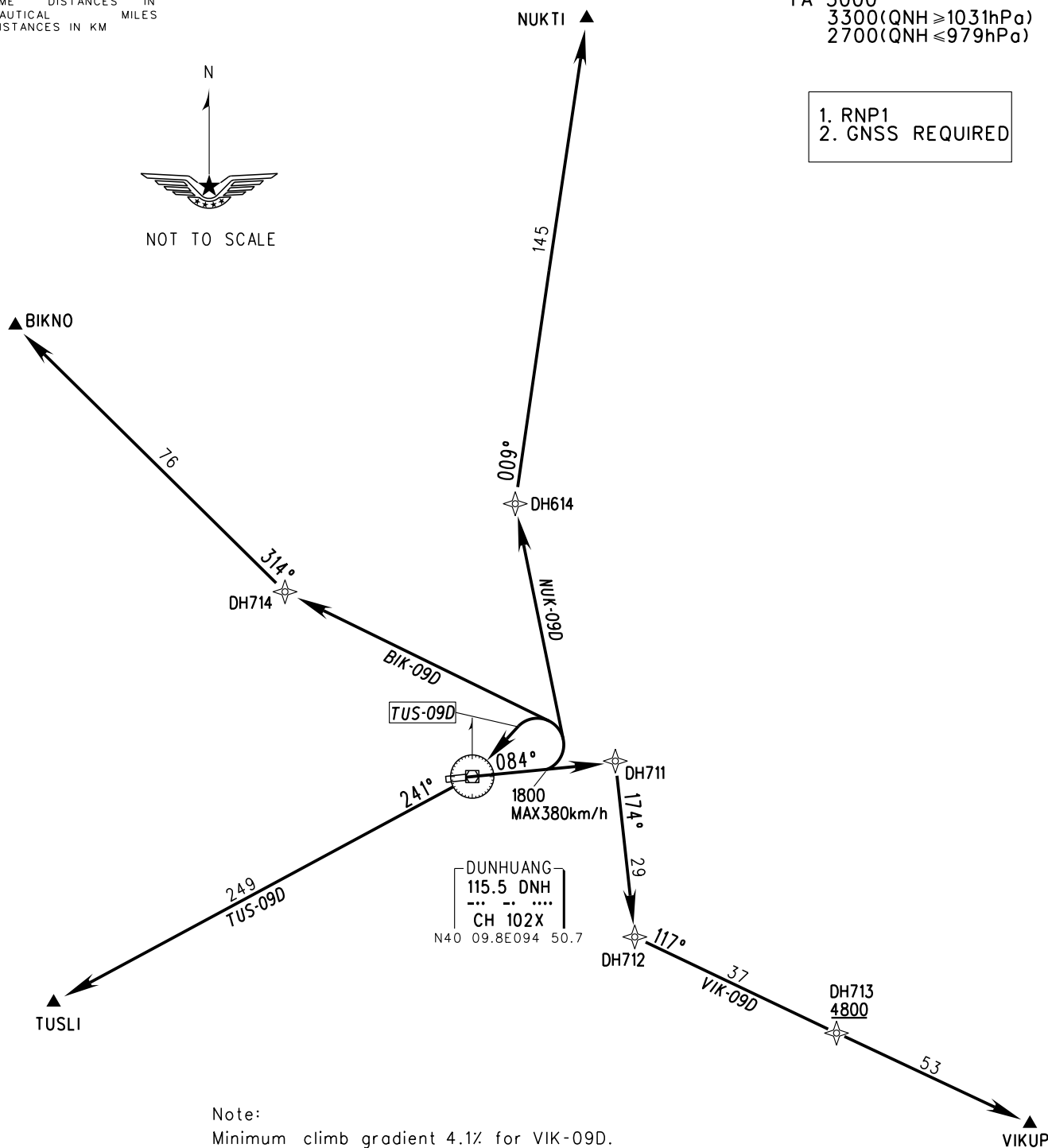
BEARINGS ARE MAGNETIC  
ALTITUDES, ELEVATIONS  
AND HEIGHTS IN METERS  
DME DISTANCES IN  
NAUTICAL MILES  
DISTANCES IN KM

TL 3600  
TA 3000  
3300(QNH ≥ 1031hPa)  
2700(QNH ≤ 979hPa)

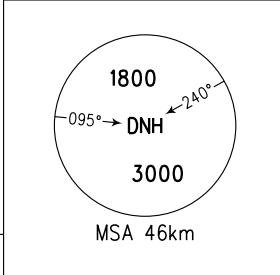
1. RNP1  
2. GNSS REQUIRED



NOT TO SCALE



Note:  
Minimum climb gradient 4.1% for VIK-09D.



Changes: Airport Name.

# STANDARD DEPARTURE CHART - INSTRUMENT

VAR 0.7° E

TWR 118.6(130.0)

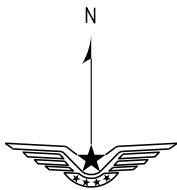
ZLDH DUNHUANG/Mogao

RNP RWY26

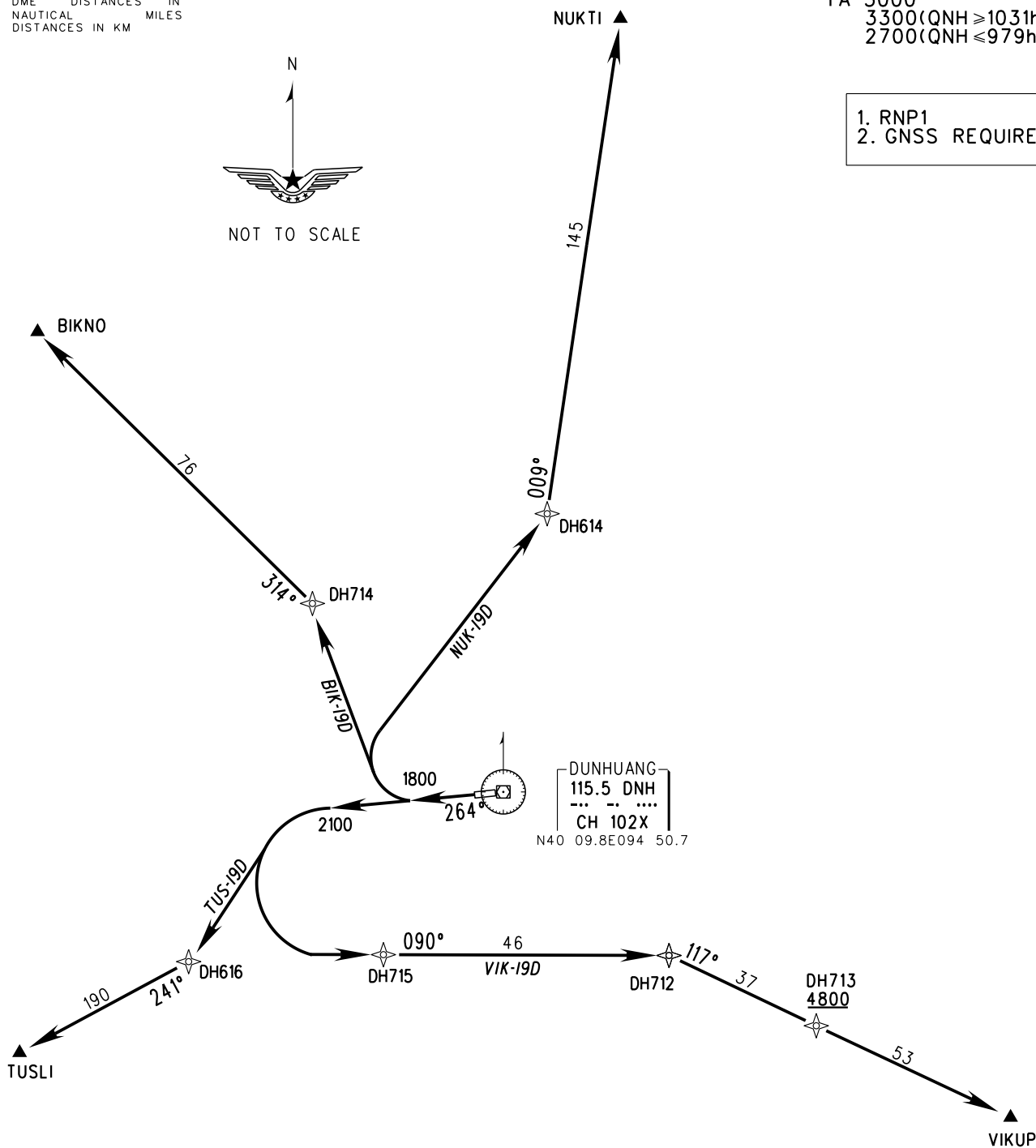
BEARINGS ARE MAGNETIC  
ALTITUDES, ELEVATIONS  
AND HEIGHTS IN METERS  
DME DISTANCES IN  
NAUTICAL MILES  
DISTANCES IN KM

TL 3600  
TA 3000  
3300(QNH ≥ 1031hPa)  
2700(QNH ≤ 979hPa)

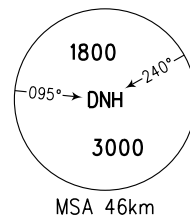
- 1. RNP1
- 2. GNSS REQUIRED



NOT TO SCALE



Changes: Airport Name.



# STANDARD ARRIVAL CHART - INSTRUMENT

VAR 0.7° E

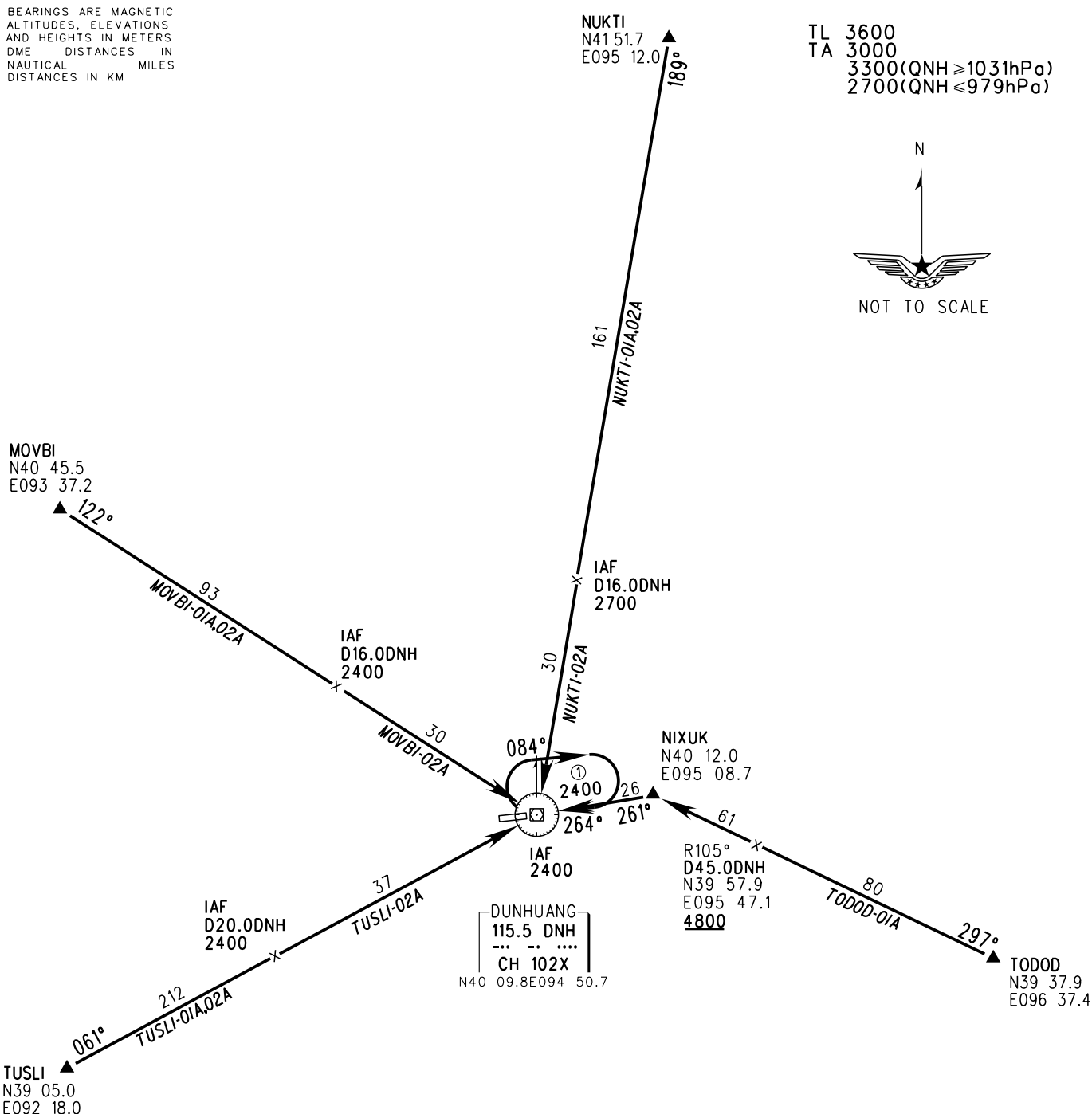
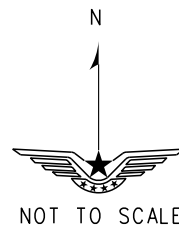
TWR 118.6(130.0)

ZLDH DUNHUANG/Mogao

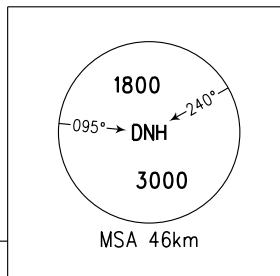
RWY08

BEARINGS ARE MAGNETIC  
ALTITUDES, ELEVATIONS  
AND HEIGHTS IN METERS  
DME DISTANCES IN  
NAUTICAL MILES  
DISTANCES IN KM

TL 3600  
TA 3000  
3300(QNH ≥ 1031hPa)  
2700(QNH ≤ 979hPa)



DUNHUANG  
115.5 DNH  
--- -- ..  
CH 102X  
N40 09.8E094 50.7



Changes: Airport Name.

# STANDARD ARRIVAL CHART - INSTRUMENT

VAR 0.7° E

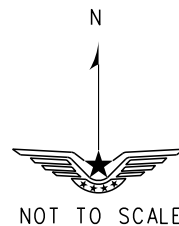
TWR 118.6(130.0)

ZLDH DUNHUANG/Mogao

RWY 26

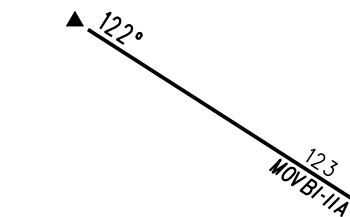
BEARINGS ARE MAGNETIC  
ALTITUDES, ELEVATIONS  
AND HEIGHTS IN METERS  
DME DISTANCES IN  
NAUTICAL MILES  
DISTANCES IN KM

TL 3600  
TA 3000  
3300(QNH ≥ 1031hPa)  
2700(QNH ≤ 979hPa)



MOVBI  
N40 45.5  
E093 37.2

NUKTI  
N41 51.7  
E095 12.0



IAF  
D19.0DNH  
2700

35  
NUKTI-I/A



DUNHUANG  
115.5 DNH  
CH 102X  
N40 09.8E094 50.7



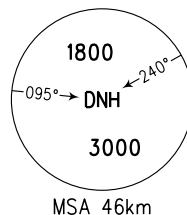
TUSLI  
N39 05.0  
E092 18.0

R093°

IAF  
D21.0DNH  
2700

45  
TODOD-I/A  
R105°  
D45.0DNH  
N39 57.9  
E095 47.1  
4800

80 297°  
TODOD  
N39 37.9  
E096 37.4



Changes: Airport Name.



# STANDARD ARRIVAL CHART - INSTRUMENT

VAR 0.7° E

TWR 118.6(130.0)

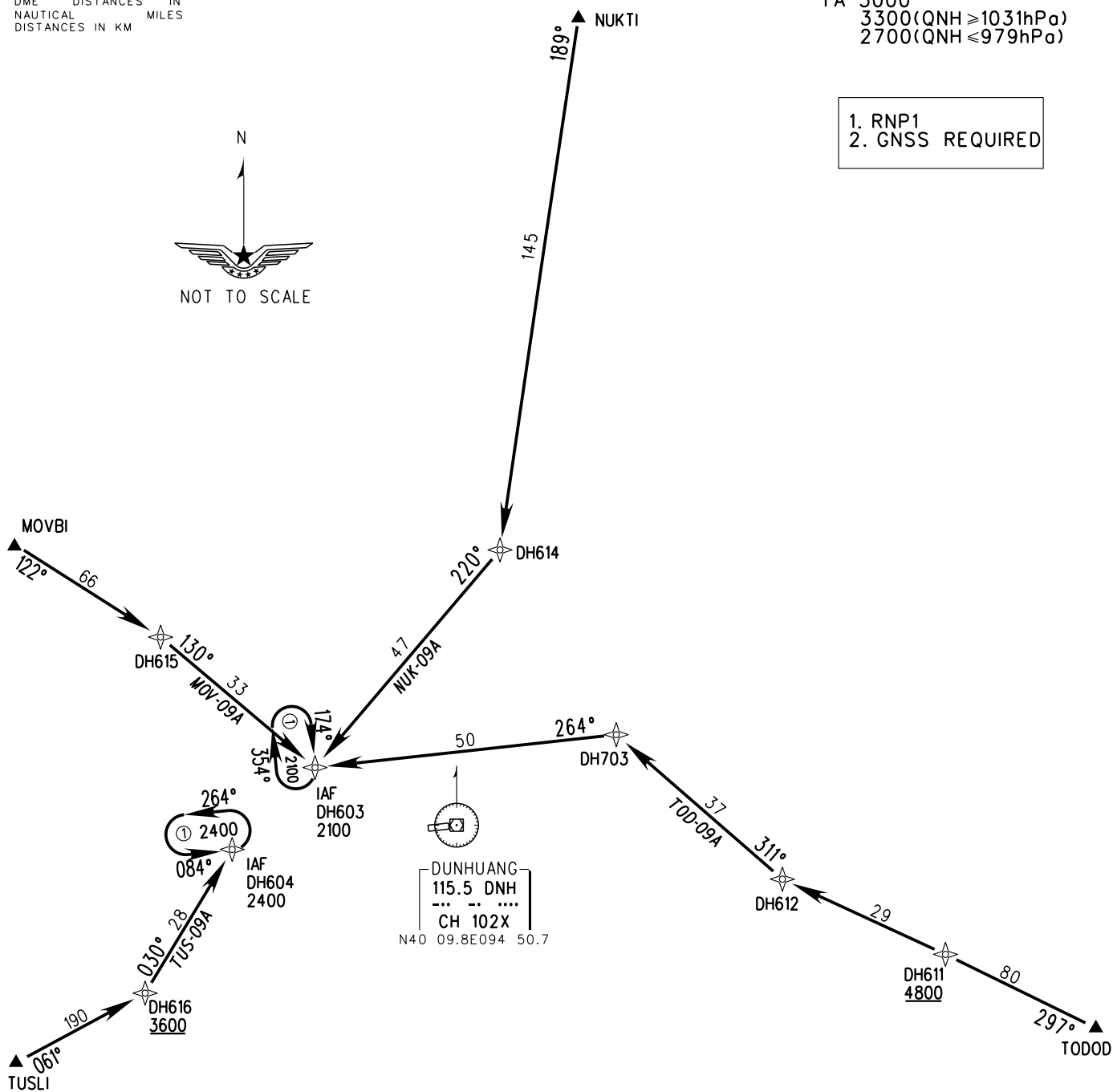
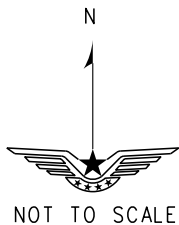
ZLDH DUNHUANG/Mogao

RNP RWY08

BEARINGS ARE MAGNETIC  
ALTITUDES, ELEVATIONS  
AND HEIGHTS IN METERS  
DME DISTANCES IN  
NAUTICAL MILES  
DISTANCES IN KM

TL 3600  
TA 3000  
3300(QNH ≥ 1031hPa)  
2700(QNH ≤ 979hPa)

- 1. RNP1
- 2. GNSS REQUIRED



Changes: Airport Name.

# STANDARD ARRIVAL CHART - INSTRUMENT

VAR 0.7° E

TWR 118.6(130.0)

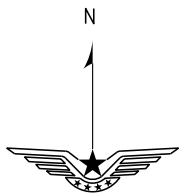
ZLDH DUNHUANG/Mogao

RNP RWY26

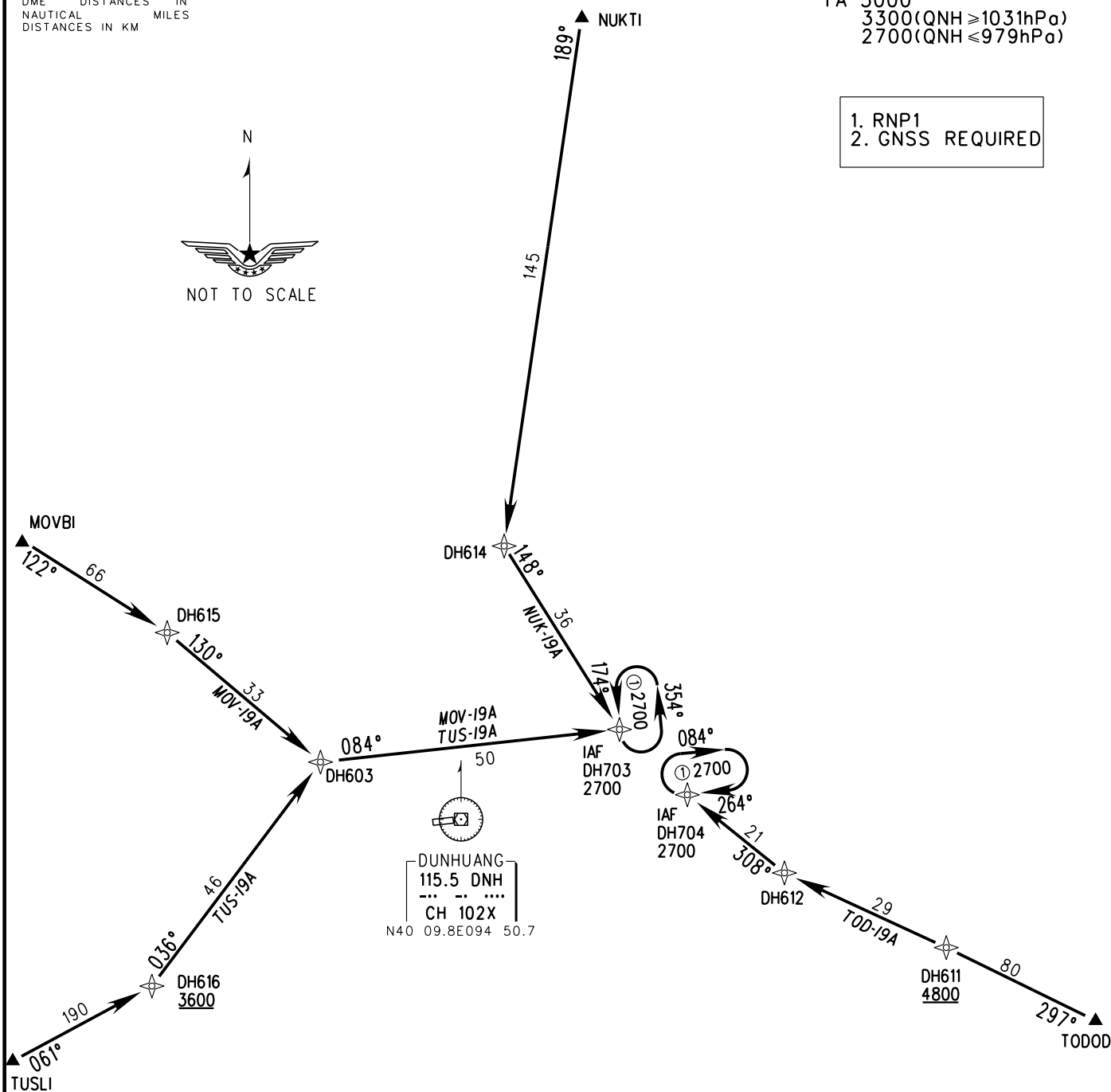
BEARINGS ARE MAGNETIC  
ALTITUDES, ELEVATIONS  
AND HEIGHTS IN METERS  
DME DISTANCES IN  
NAUTICAL MILES  
DISTANCES IN KM

TL 3600  
TA 3000  
3300(QNH ≥ 1031hPa)  
2700(QNH ≤ 979hPa)

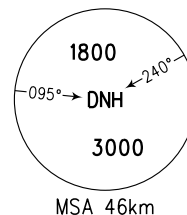
- 1. RNP1
- 2. GNSS REQUIRED



NOT TO SCALE



Changes: Airport Name.



## WAYPOINT LIST

DUNHUANG/Mogao

WAYPOINT ID	COORDINATES	WAYPOINT ID	COORDINATES	WAYPOINT ID	COORDINATES
DH602	N40° 08'36.5"E094° 35'05.0"				
DH603	N40° 15'03.6"E094° 34'13.1"				
DH604	N40° 07'46.6"E094° 24'34.6"				
DH611	N39° 57'51.6"E095° 47'08.6"				
DH612	N40° 04'46.7"E095° 28'23.0"				
DH614	N40° 34'22.0"E094° 55'54.6"				
DH615	N40° 26'41.8"E094° 16'15.6"				
DH616	N39° 54'58.8"E094° 14'29.4"				
DH702	N40° 11'21.0"E095° 10'08.0"				
DH703	N40° 17'49.2"E095° 09'16.4"				
DH704	N40° 11'53.9"E095° 17'08.5"				
DH711	N40° 11'09.7"E095° 07'25.4"				
DH712	N39° 55'20"E095° 09'30"				
DH713	N39° 46'28.4"E095° 32'53.8"				
DH714	N40° 26'32.8"E094° 28'44.9"				
DH715	N39° 55'34.2"E094° 36'47.7"				
DNH	N40° 09.8'E094° 50.7'				
BIKNO	N40° 54'54"E093° 50'53"				
MOVBI	N40° 45'28"E093° 37'13"				
NUKTI	N41° 51'42"E095° 11'58"				
TODOD	N39° 37'51"E096° 37'22"				
TUSLI	N39° 05'00"E092° 18'00"				
VIKUP	N39° 33'49"E096° 06'13"				

Changes: New chart.

DATABASE CODING TABLE

DUNHUANG/Mogao

Path Terminator	Waypoint ID	Fly over	Magnetic Course(°)	Turn Direction	Altitude (m)	IAS (km/h)	VPA/TCH	Navigation Specification
RWY08 SID NUK-09D								
CA			084		1800	MAX380		RNP1
DF	DH614			L				RNP1
TF	NUKTI							RNP1
RWY08 SID VIK-09D								
CF	DH711		084					RNP1
TF	DH712							RNP1
TF	DH713				4800			RNP1
TF	VIKUP							RNP1
RWY08 SID TUS-09D								
CA			084		1800	MAX380		RNP1
DF	DNH			L				RNP1
TF	TUSLI							RNP1
RWY08 SID BIK-09D								
CA			084		1800	MAX380		RNP1
DF	DH714			L				RNP1
TF	BIKNO							RNP1
RWY26 SID NUK-19D								
CA			264		1800			RNP1
DF	DH614			R				RNP1
TF	NUKTI							RNP1
RWY26 SID VIK-19D								
CA			264		2100			RNP1
DF	DH715			L				RNP1
TF	DH712							RNP1
TF	DH713				4800			RNP1
TF	VIKUP							RNP1
RWY26 SID TUS-19D								
CA			264		2100			RNP1
DF	DH616			L				RNP1
TF	TUSLI							RNP1
RWY26 SID BIK-19D								
CA			264		1800			RNP1
DF	DH714			R				RNP1
TF	BIKNO							RNP1
RWY08 STAR NUK-09A								
IF	NUKTI							RNP1
TF	DH614							RNP1
TF	DH603				2100			RNP1

Changes: New chart.

DATABASE CODING TABLE

DUNHUANG/Mogao

Path Terminator	Waypoint ID	Fly over	Magnetic Course(°)	Turn Direction	Altitude (m)	IAS (km/h)	VPA/TCH	Navigation Specification
RWY08 STAR TOD-09A								
IF	TOD0D							RNP1
TF	DH611				4800			RNP1
TF	DH612							RNP1
TF	DH703							RNP1
TF	DH603				2100			RNP1
RWY08 STAR TUS-09A								
IF	TUSLI							RNP1
TF	DH616				3600			RNP1
TF	DH604				2400			RNP1
RWY08 STAR MOV-09A								
IF	MOVBI							RNP1
TF	DH615							RNP1
TF	DH603				2100			RNP1
RWY08 Holding(Outbound Time:1min)								
HM	DH603	Y	174	R	2100			RNP1
HM	DH604	Y	084	L	2400			RNP1
RWY26 STAR NUK-19A								
IF	NUKTI							RNP1
TF	DH614							RNP1
TF	DH703				2700			RNP1
RWY26 STAR TOD-19A								
IF	TOD0D							RNP1
TF	DH611				4800			RNP1
TF	DH612							RNP1
TF	DH704				2700			RNP1
RWY26 STAR TUS-19A								
IF	TUSLI							RNP1
TF	DH616				3600			RNP1
TF	DH603							RNP1
TF	DH703				2700			RNP1
RWY26 STAR MOV-19A								
IF	MOVBI							RNP1
TF	DH615							RNP1
TF	DH603							RNP1
TF	DH703				2700			RNP1
RWY26 Holding (Outbound Time:1min)								
HM	DH703	Y	174	L	2700			RNP1
HM	DH704	Y	264	R	2700			RNP1

Changes: New chart.

