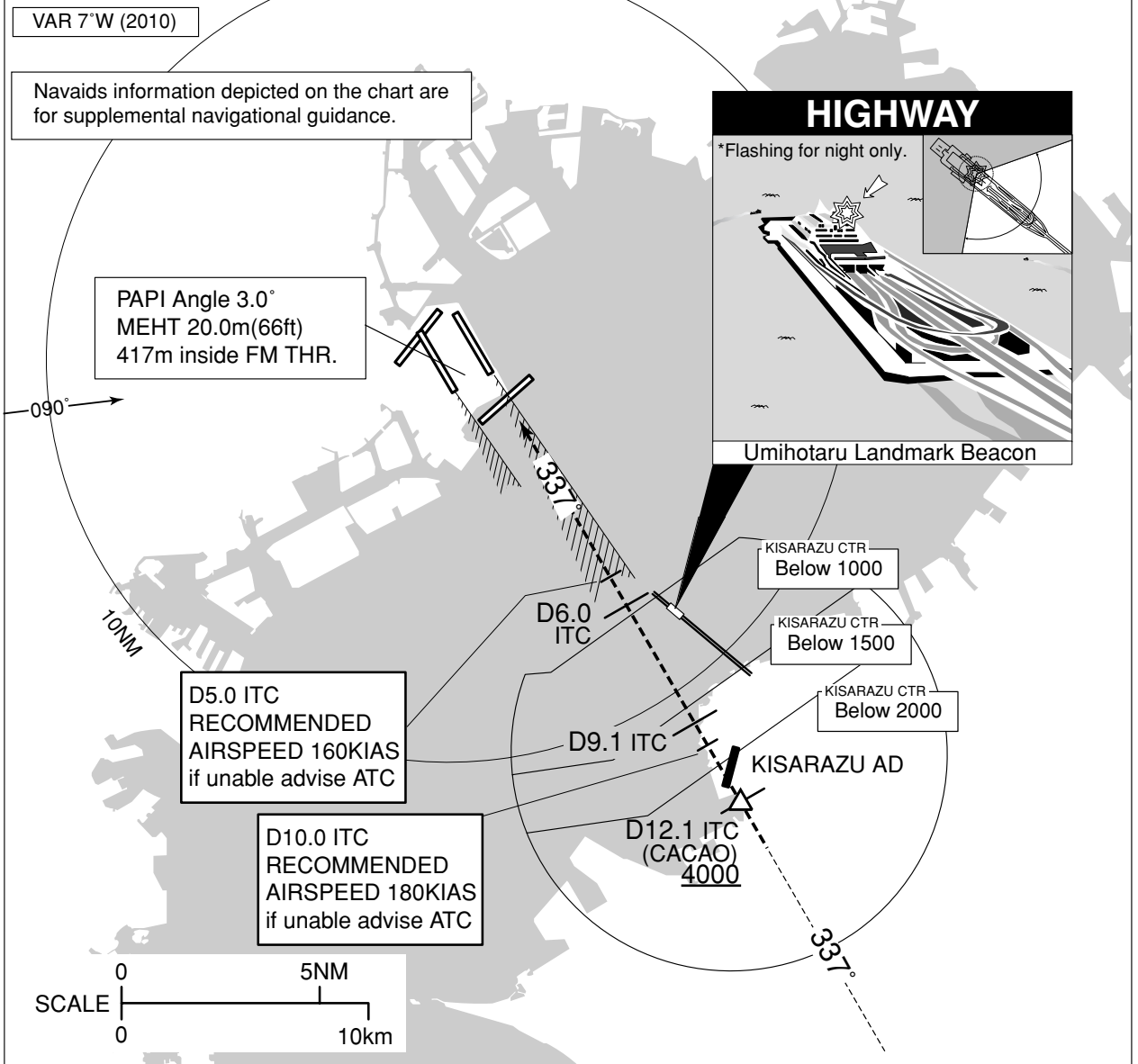


**VISUAL APPROACH
HIGHWAY VISUAL RWY34R**

RJTT / TOKYO INTL

TOKYO APP 119.1 - 119.4 - 119.7 126.5 - 236.8 - 261.2	ILS – LOC ITC 108.9 ILS–GP 329.3	TOKYO TOWER 124.35 - 118.1 - 118.575 118.725 - 118.8	ATIS 128.8
---	--	--	------------

Simultaneous approach authorized with RWY34L



When visual approaches to RWY34R are in progress, arriving aircraft may be vectored to CACAO for HIGHWAY VISUAL RWY34R APPROACH.
In the event of a go-around, climb via ITC LOC and after THR HDG030° to 3000FT until receiving ATC instructions.

<HIGHWAY VISUAL RWY34R APPROACH>

After CACAO, aircraft proceed to RWY34R (ITC LOC course).

For avoid entering KISARAZU CTR, aircraft is recommended ITC 9.1DME at or above 2500FT, ITC 6.0DME at or above 1500FT.

Note1: Pilot is urged to report promptly to ATC when lose sight of landmark(HIGHWAY) and the preceding aircraft concerned.

Note2: Reference NAVAIDS(ITC LOC) must be operating.

Note3: RADAR service required.

Note4: Procedure not authorized at night in case of Umihotaru Landmark Beacon not operated.

Note5: When cleared HIGHWAY VISUAL RWY34R APPROACH, aircraft should fly via last routing cleared until CACAO.