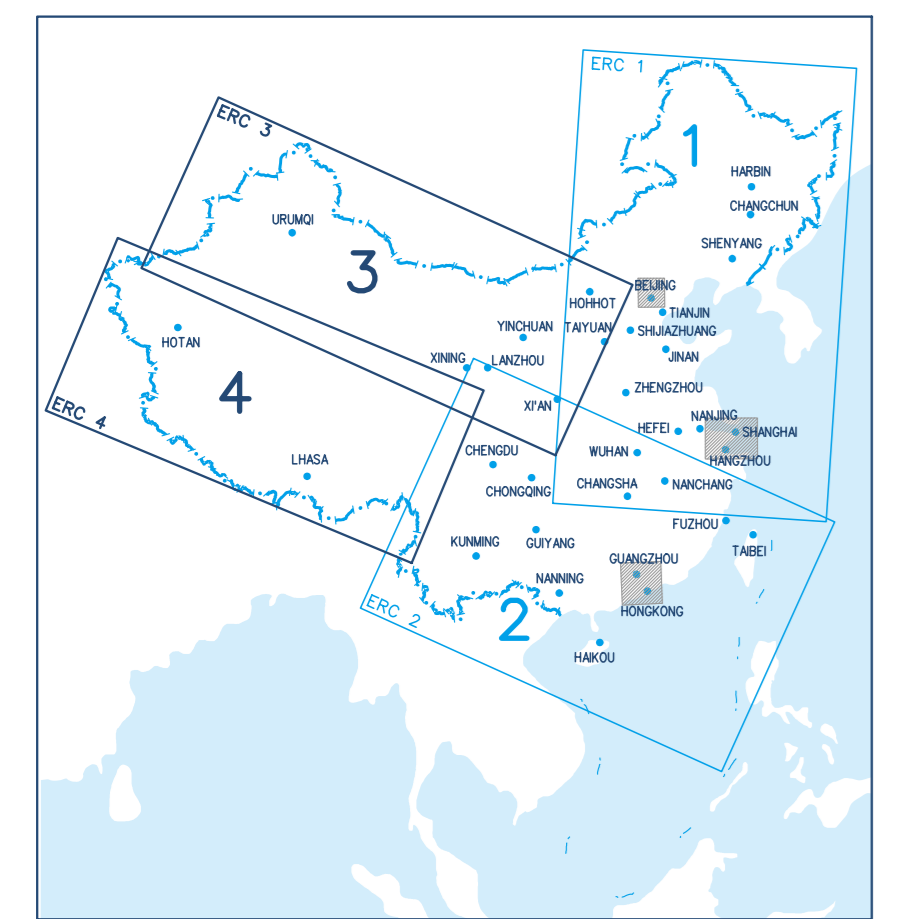


中國民航 CAAC CIVIL AVIATION ADMINISTRATION OF CHINA 航路圖 ENROUTE CHART EFF 1906191600UTC REVISION 15 MAY 2019

ERC3: Urumi/VOR 'WUR' displaced, routes B215,W190 adjusted. ATS route V91 established, EGUVO holding pattern withdrawn. ERC4: TUNM established, ATS route W187 adjusted. Primary FREQ of ZUUU/AR19 adjusted.

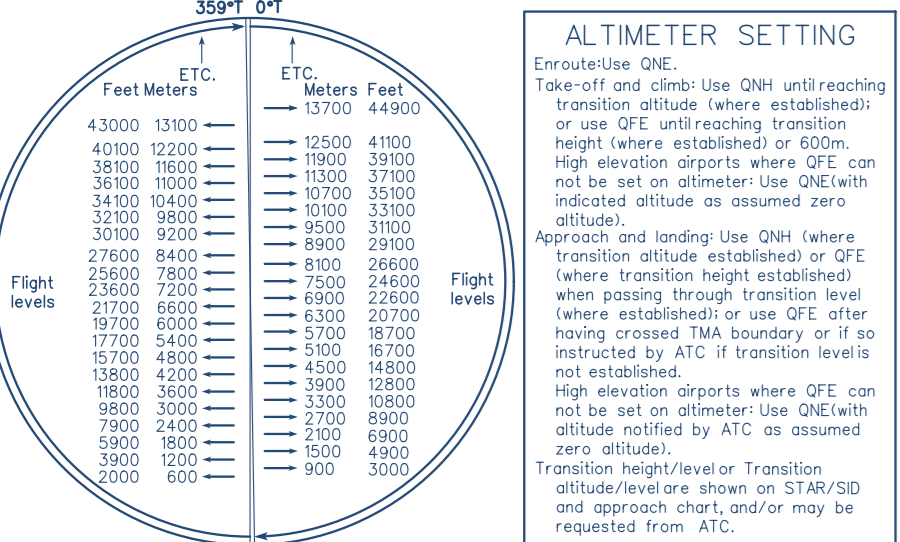


SCALE 1:3 000 000

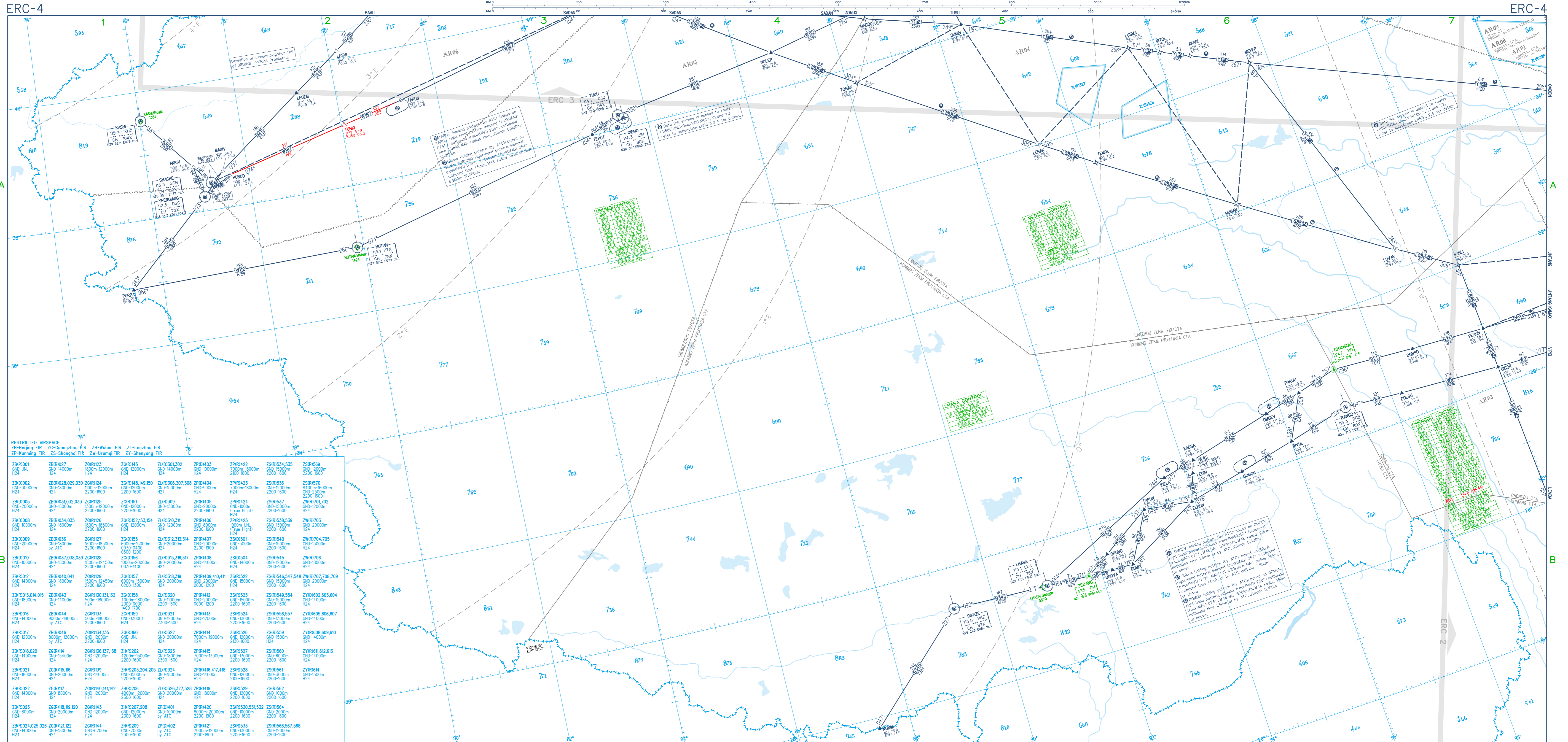
LEGEND

- Legend items: Civil aerodrome, Reporting Point, Waypoint, VOR/DME, NDB, National border, Radio frequency sector, NDB name, Morse code, VOR name, DME channel, Restricted airspace, Segment distance, City name/aerodrome name, FIR, Provisional FIR, CTA, TMA, APP or TWR controllers, ADZ, Diversionary procedure, VFR route, Isogonic line, Area minimum altitude, Magnetic track, Distance in km, Minimum flight altitude, ATC Frequency, Holding pattern, (P) Prohibited, (R) Restricted, (D) Danger, Vertical clearance, Magnetic track, FBN NAV specification.

FLIGHT LEVELS



Note: ATC will issue the flight level clearance in meters. Pilots shall use the China FLAS Diagram to determine the corresponding flight level in feet. Pilots should be aware that due to the rounding differences, the metric result of the onboard avionics will not necessarily correspond to the cleared flight levels however the difference will never be more than 30 meters.



RESTRICTED AIRSPACE

Table of Restricted Airspace (ZB, ZC, ZD, ZL, ZM, ZY) with columns for ID, GND, H24, and coordinates.