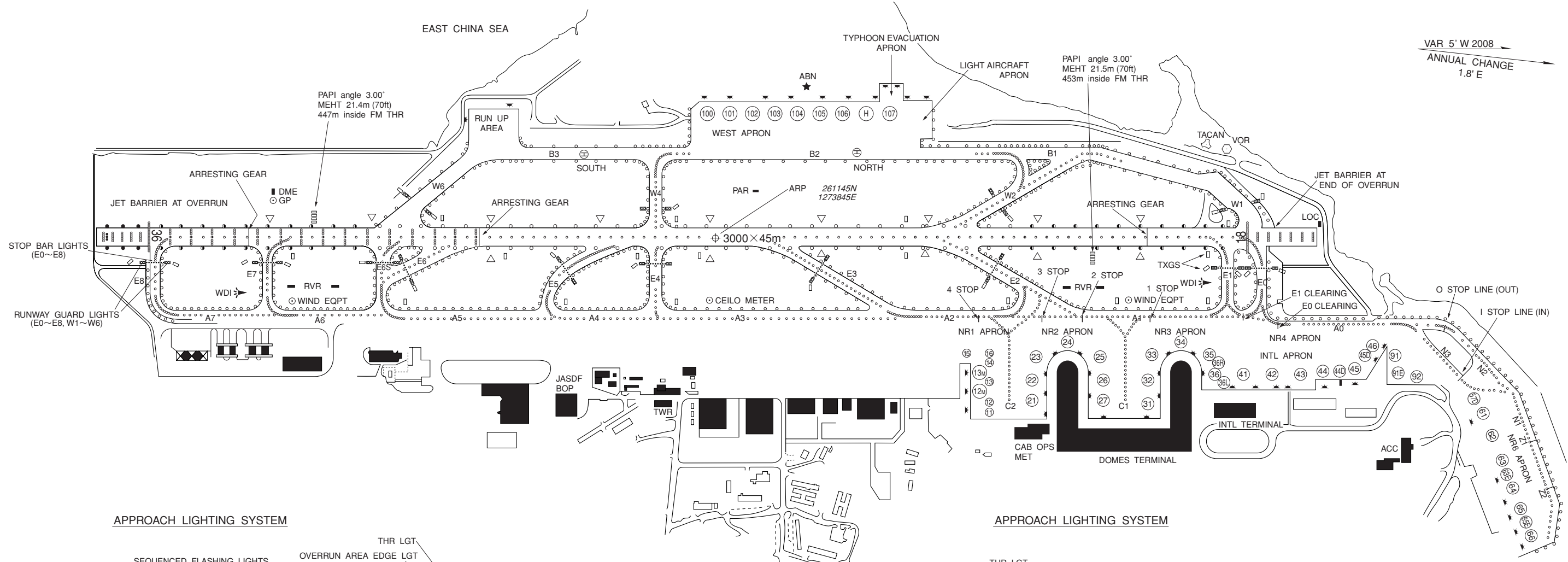
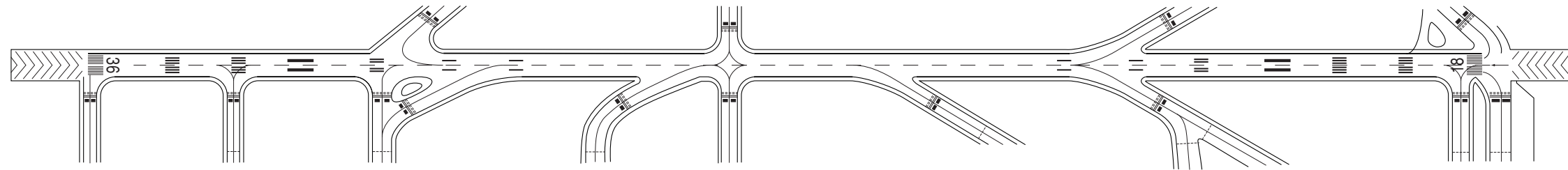


AERODROME CHART

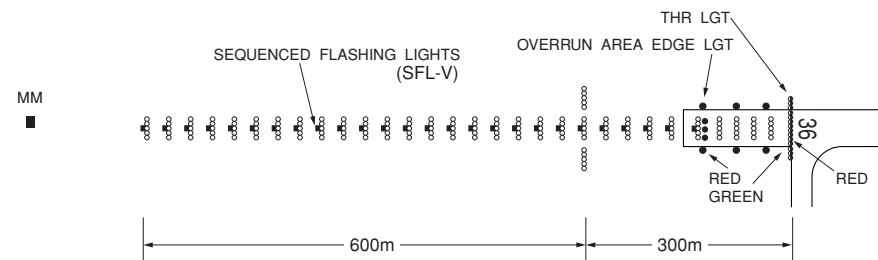
NAHA AIRPORT
ELEV 11ft (3.3m)

MARKING AIDS

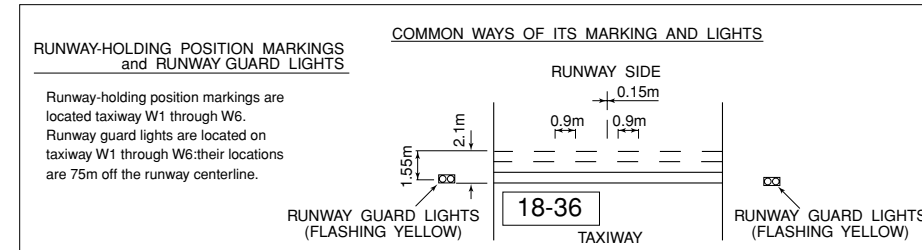
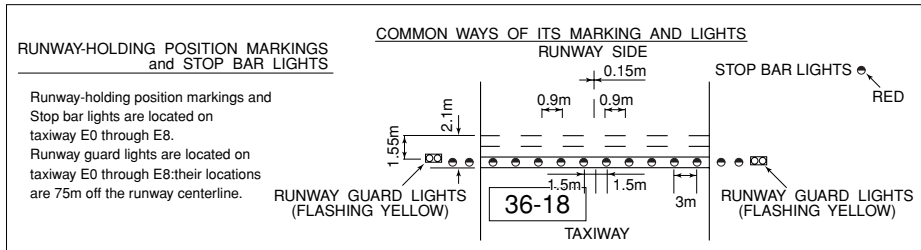
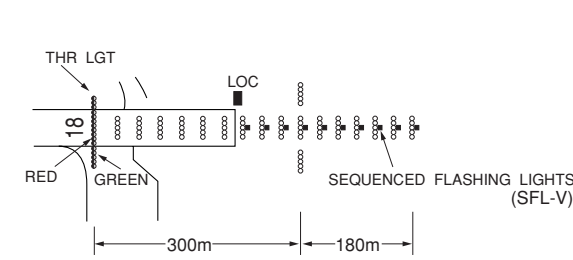


VAR 5° W 2008
ANNUAL CHANGE 1.8° E

APPROACH LIGHTING SYSTEM



APPROACH LIGHTING SYSTEM



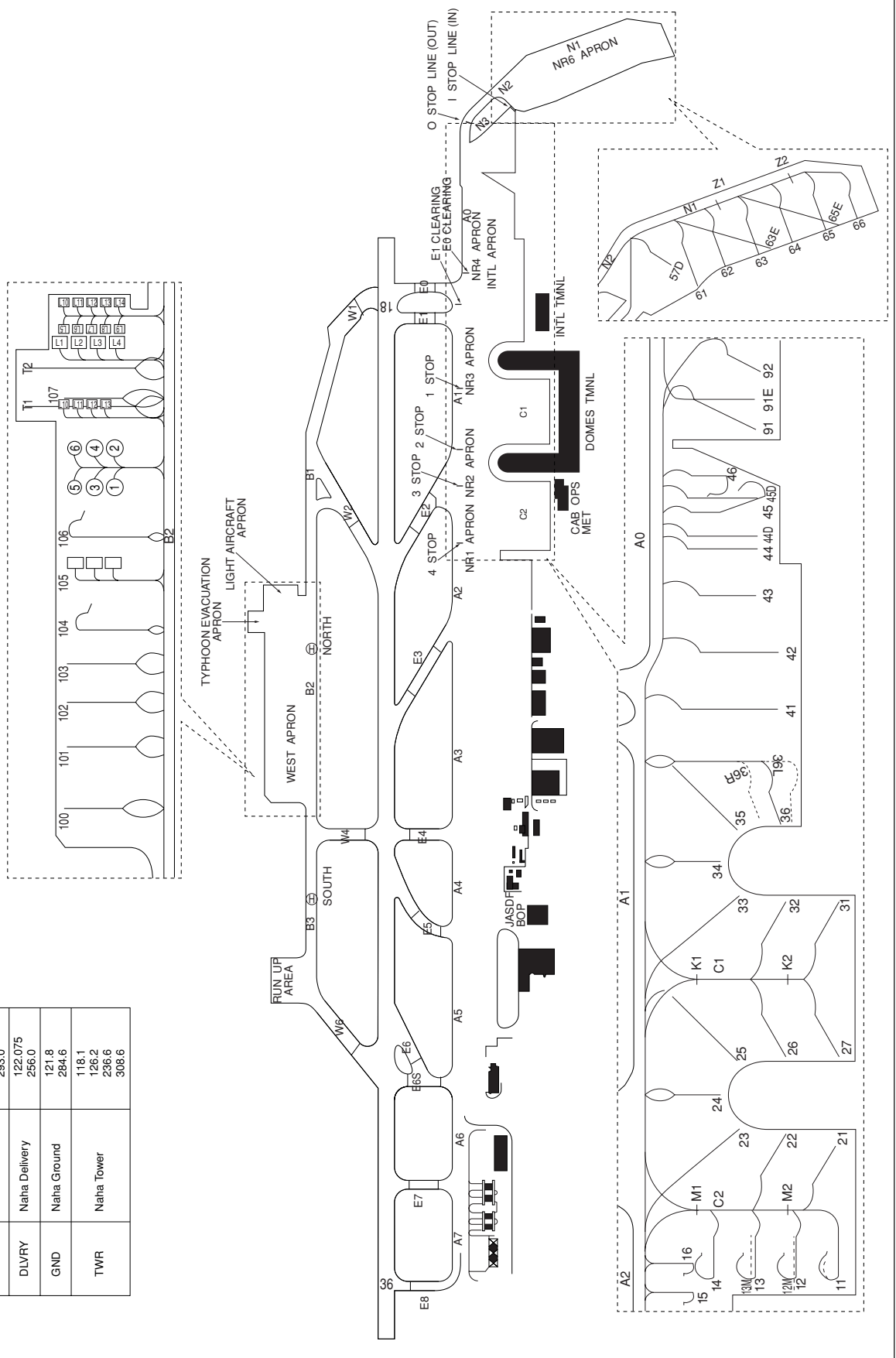
AD CHART

ROAH / NAHA

NAHA AIRPORT
ELEV 11ft (3.3m)

Designation	Call Sign	Frequency (MHz)
ATIS	Naaha Airport	127.8 293.0
DLVR	Naaha Delivery	122.075 256.0
GND	Naaha Ground	121.8 284.6
TWR	Naaha Tower	118.1 126.2 236.6 308.6

VAR 5° W (2008)



INTENTIONALLY LEFT BLANK

AERODROME OBSTRUCTION CHART-ICAO
TYPE A (OPERATING LIMITATIONS)

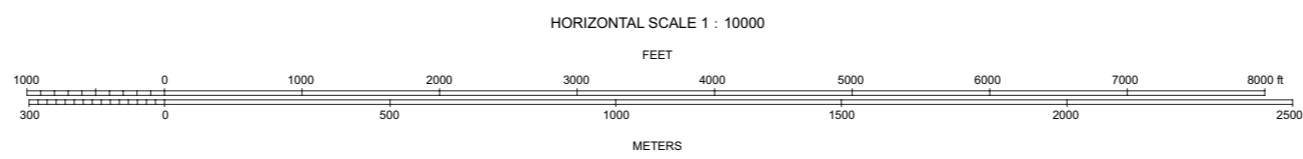
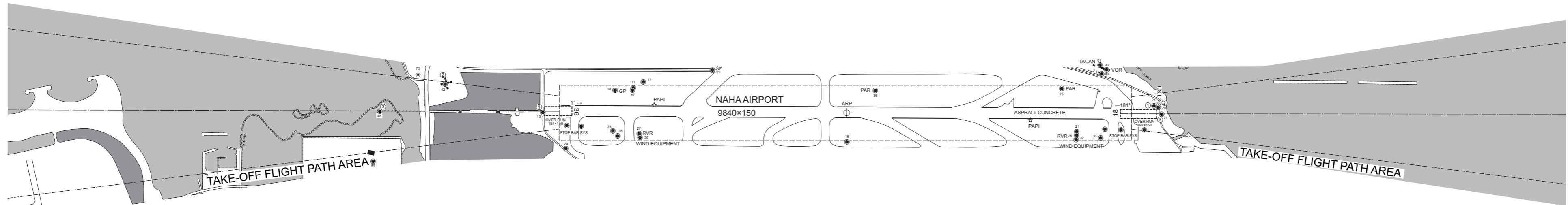
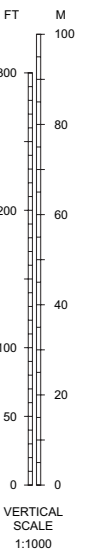
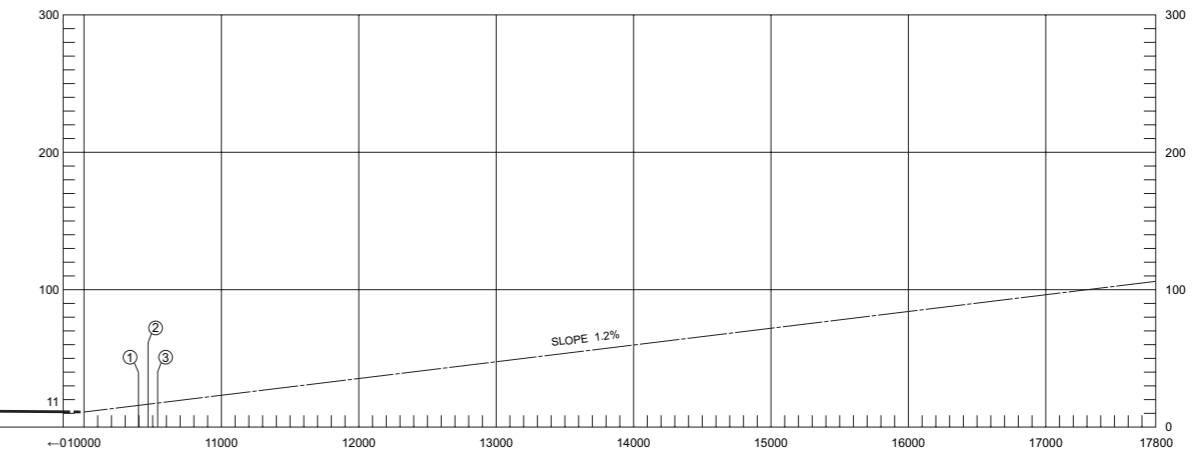
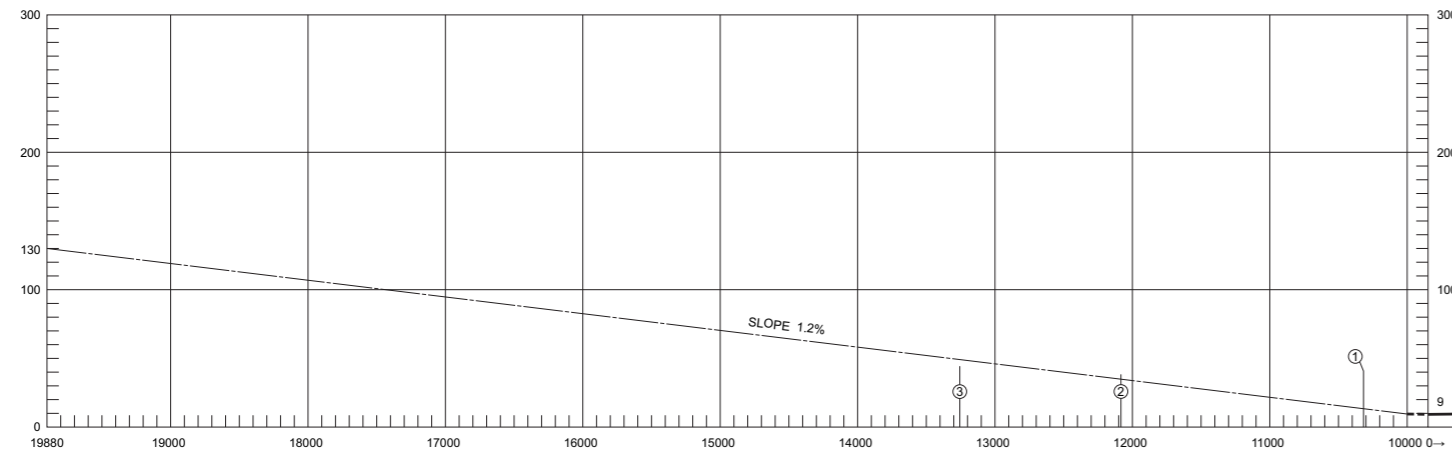
DIMENSIONS AND ELEVATIONS IN FEET BEARINGS ARE MAGNETIC

MAGNETIC VARIATION 4°23.00' W - MARCH 2006

RWY : 36-18

OPERATIONAL DATA	
RWY36	RWY18
TAKE-OFF RUN AVAILABLE	
TAKE-OFF DISTANCE AVAILABLE	
ACCELERATE STOP DISTANCE AVAILABLE	
LANDING DISTANCE AVAILABLE	

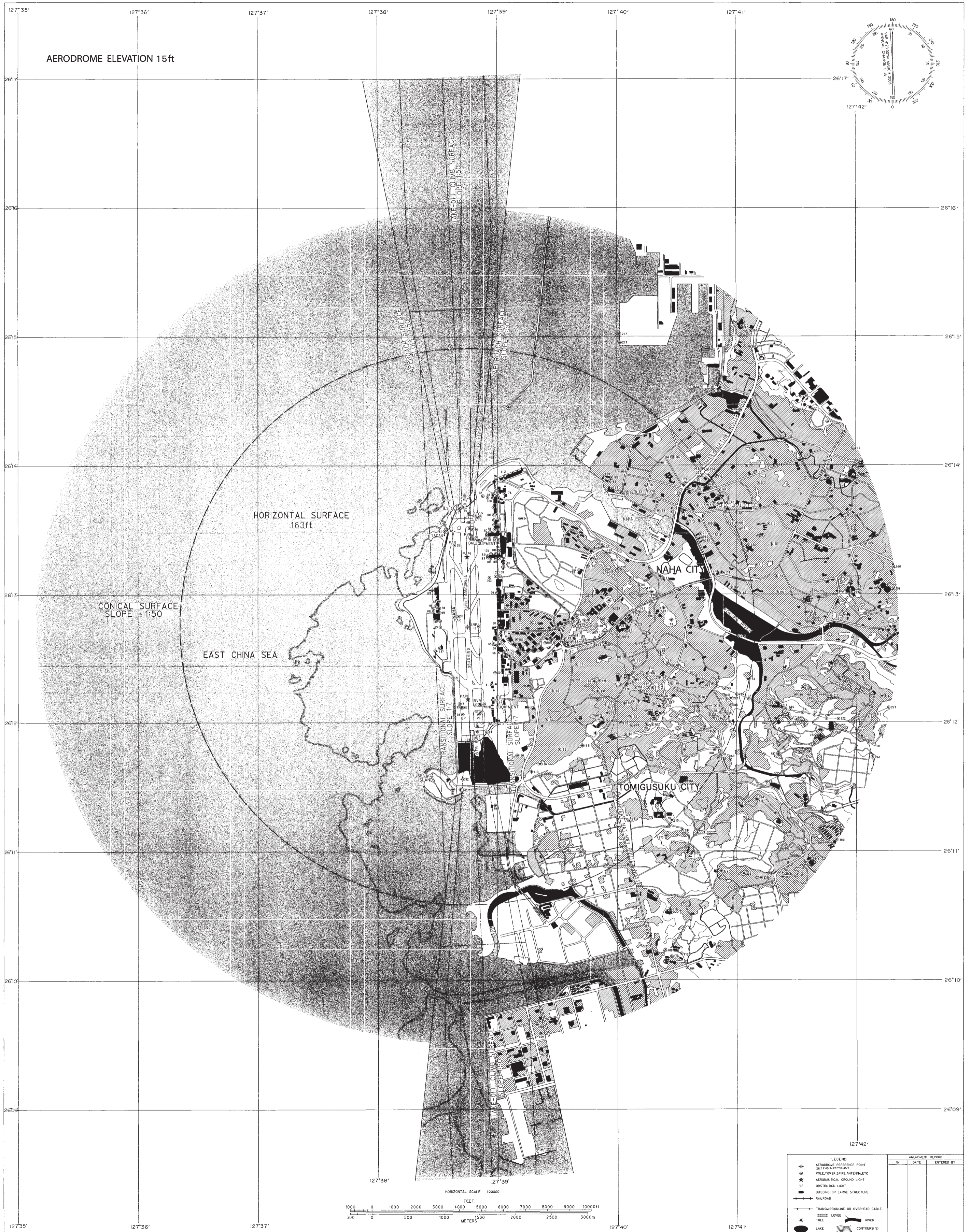
NAHA AIRPORT
OBSTRUCTION CHART RWY 36-18
AD ELEV 15ft ARP



LEGEND		AMENDMENT RECORD		
①	IDENTIFICATION NUMBER	No.	DATE	ENTERED BY
●	POLE TOWER SPIRE ANTENNA ETC			
★	AERONAUTICAL GROUND LIGHT			
*	TREE OR SHRUB			
+	RAIL ROAD			
—+—	TRANSMISSION LINE OR OVERHEAD CABLE			
□	BENCHMARK			
○	CONTOURS			
—	RIVER			
○	POND			

AERODROME OBSTACLE CHART - ICAO
TYPE B (OPERATING LIMITATIONS)

DIMENSIONS AND ELEVATIONS IN FEET BEARINGS ARE MAGNETIC



STANDARD DEPARTURE CHART-INSTRUMENT

ROAH / NAHA

SID

CONEY ONE DEPARTURE

RWY18 : Climb RWY HDG to 500FT or above, climb via NHC R180 to CONEY.

RWY36 : (Not established)

Cross NHC R180/12.0DME at 2000FT.

NAHA SOUTHWEST ONE DEPARTURE

RWY18 : Climb RWY HDG to 500FT or above, turn right, climb via NHC R195 to MAZDA.

RWY36 : (Not established)

Cross NHC R195/6.0DME at 1000FT.

AGUNI ONE DEPARTURE

RWY18 : Climb RWY HDG to 500FT or above, turn right, climb via NHC R195 to intercept and proceed via NHC 18.0DME clockwise ARC to CHURA.

RWY36 : (Not established)

Cross NHC R195/6.0DME at 1000FT, cross NHC R290 at 2000FT.

KUMEJIMA ONE DEPARTURE

RWY18 : Climb RWY HDG to 500FT or above, turn right, climb via NHC R195 to intercept and proceed via NHC 18.0DME clockwise ARC...

Cross NHC R195/6.0DME at 1000FT.

RWY36 : Climb RWY HDG to 500FT or above, turn left, climb via NHC R320 to intercept and proceed via NHC 18.0DME counterclockwise ARC...

Cross NHC R320/11.0DME at 1000FT.

...to intercept and proceed via NHC R265 to DORIS.

Cross NHC R265/24.0DME at 2000FT, cross DORIS at or above 3000FT.

Note RWY36 : 5.0% climb gradient required up to 500FT.

CHURA ONE DEPARTURE

RWY18 : (Not established)

RWY36 : Climb RWY HDG to 500FT or above, turn left, climb via NHC R320 to CHURA.

Cross NHC R320/11.0DME at 1000FT.

Note RWY36: 5.0% climb gradient required up to 500FT.

NAHA NORTH ONE DEPARTURE

RWY18 : (Not established)

RWY36 : Climb RWY HDG to 500FT or above, turn left, climb via NHC R340 to EISAR.

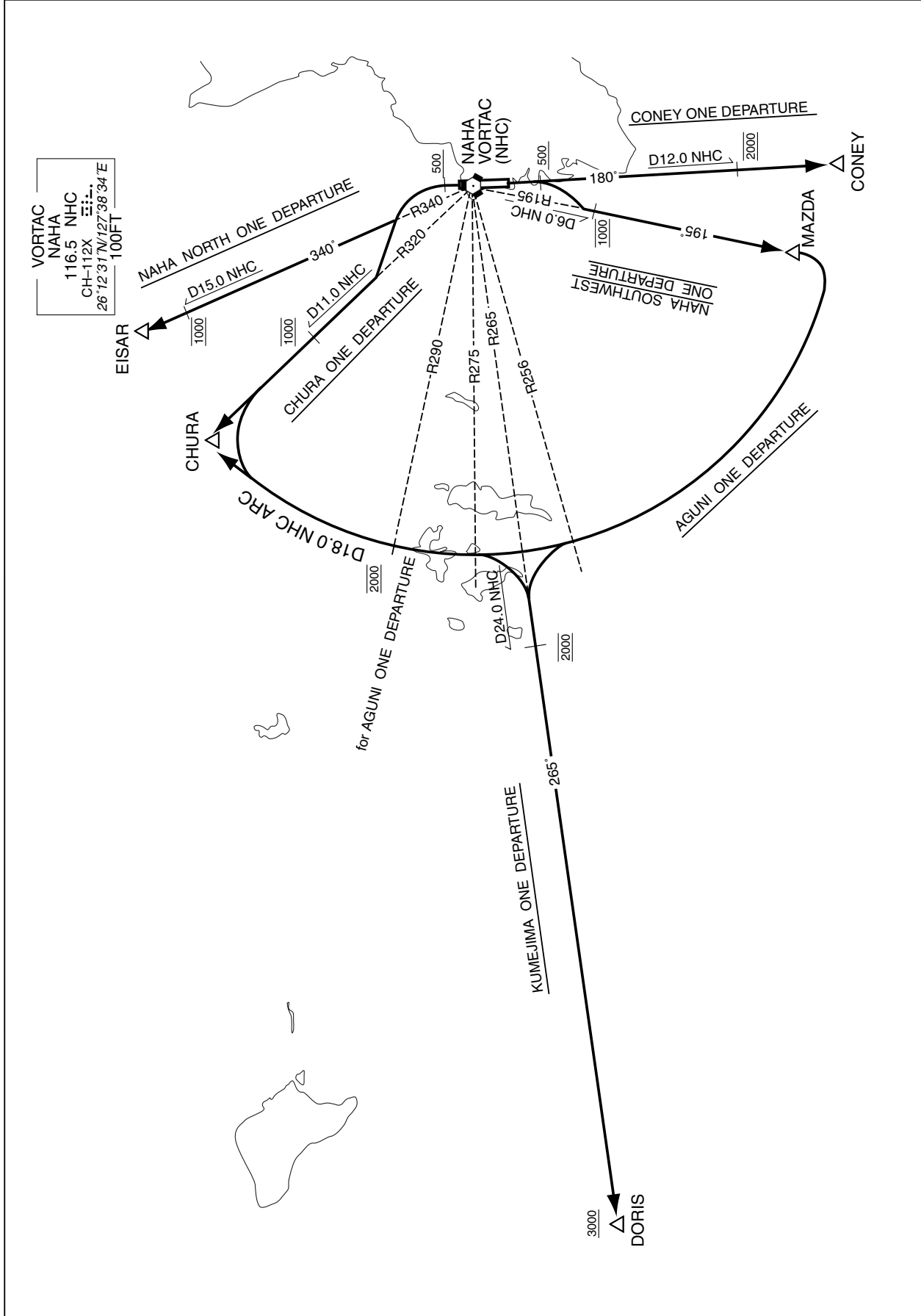
Cross NHC R340/15.0DME at 1000FT.

Note RWY36 : 5.0% climb gradient required up to 500FT.

STANDARD DEPARTURE CHART-INSTRUMENT

ROAH / NAHA

→ SID



STANDARD DEPARTURE CHART-INSTRUMENT

ROAH / NAHA

TRANSITION

ADDAN TRANSITION

From over CONEY, via NHC 18.0DME counterclockwise ARC to intercept and proceed via TIC R050 to ADDAN via NABEE.

CHERY SOUTH TRANSITION

From over CONEY, via NHC 18.0DME counterclockwise ARC to intercept and proceed via TIC R050 to CHERY via NABEE.

PACIFIC TRANSITION

From over CONEY, via NHC 18.0DME counterclockwise ARC to intercept and proceed via TIC R050 to BASHO via NABEE,...

for TAMAK : ...turn left via ALC R210 to TAMAK.

for DONAN : ...turn left via ALC R210 to DONAN.

for ALC VORTAC : ...turn left via ALC R210 to ALC VORTAC.

NANJO SOUTH TRANSITION

From over CONEY, via NHC 18.0DME counterclockwise ARC to intercept and proceed via TIC R101 to TOPAT via NANJO, BUICK.

TEKOS SOUTH TRANSITION

From over CONEY, via NHC 18.0DME counterclockwise ARC to intercept and proceed via TIC R134 to TEKOS via YAESE, ACORD.

SAKON TRANSITION

From over MAZDA, proceed via NHC R195 to intercept and proceed via TIC R211 to SAKON.

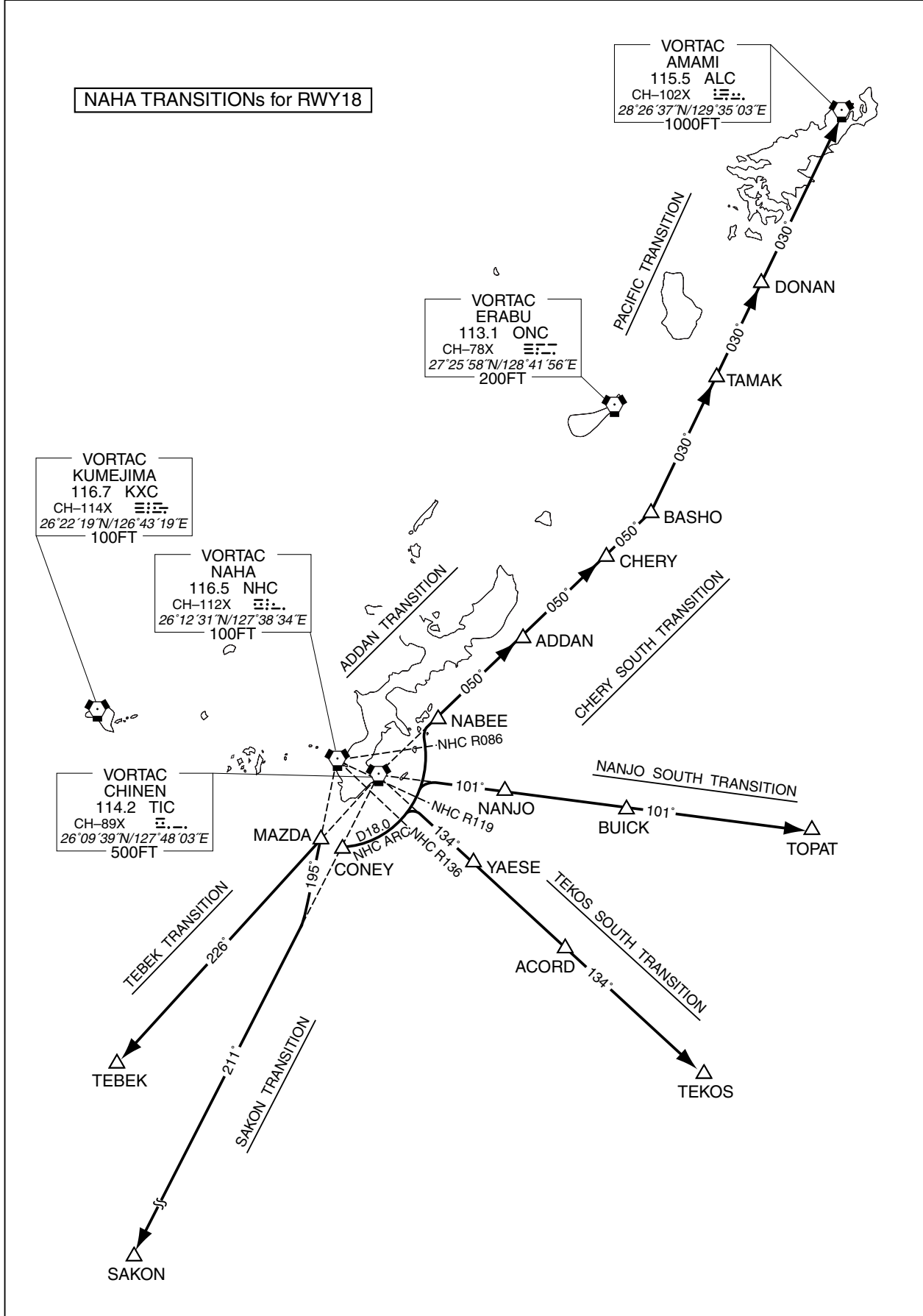
TEBEK TRANSITION

From over MAZDA, proceed via TIC R226 to TEBEK.

STANDARD DEPARTURE CHART-INSTRUMENT

ROAH / NAHA

TRANSITION



STANDARD DEPARTURE CHART-INSTRUMENT

ROAH / NAHA

TRANSITION

CHINA SEA TRANSITION

From over EISAR, proceed via NHC R340 to MUCRY, turn right to intercept and proceed via KXC R046 to GOYAH,...

for CHAMP : ...turn right to intercept and proceed via ALC R246 to CHAMP.

for HACHA : ...turn right to intercept and proceed via ALC R246 to HACHA.

for ALC VORTAC : ...turn right to intercept and proceed via ALC R246 to ALC VORTAC.

OKUMA TRANSITION

From over EISAR, via NHC 18.0DME clockwise ARC to intercept and proceed via NHC R042 to OKUMA.

CHERY NORTH TRANSITION

From over CHURA, via NHC 18.0DME counterclockwise ARC to intercept and proceed via TIC R050 to CHERY via NABEE.

Cross NHC R240 at 2000FT.

DODGE TRANSITION

From over CHURA, via NHC 18.0DME counterclockwise ARC to intercept and proceed via NHC R240 to DODGE via ENDER.

Cross ENDER at 2000FT.

GANJU TRANSITION

From over CHURA, via NHC 18.0DME counterclockwise ARC to intercept and proceed via NHC R252 to GANJU.

Cross NHC R252/22.0DME at 2000FT.

NANJO NORTH TRANSITION

From over CHURA, via NHC 18.0DME counterclockwise ARC to intercept and proceed via TIC R101 to TOPAT via NANJO, BUICK.

Cross NHC R240 at 2000FT.

TEKOS NORTH TRANSITION

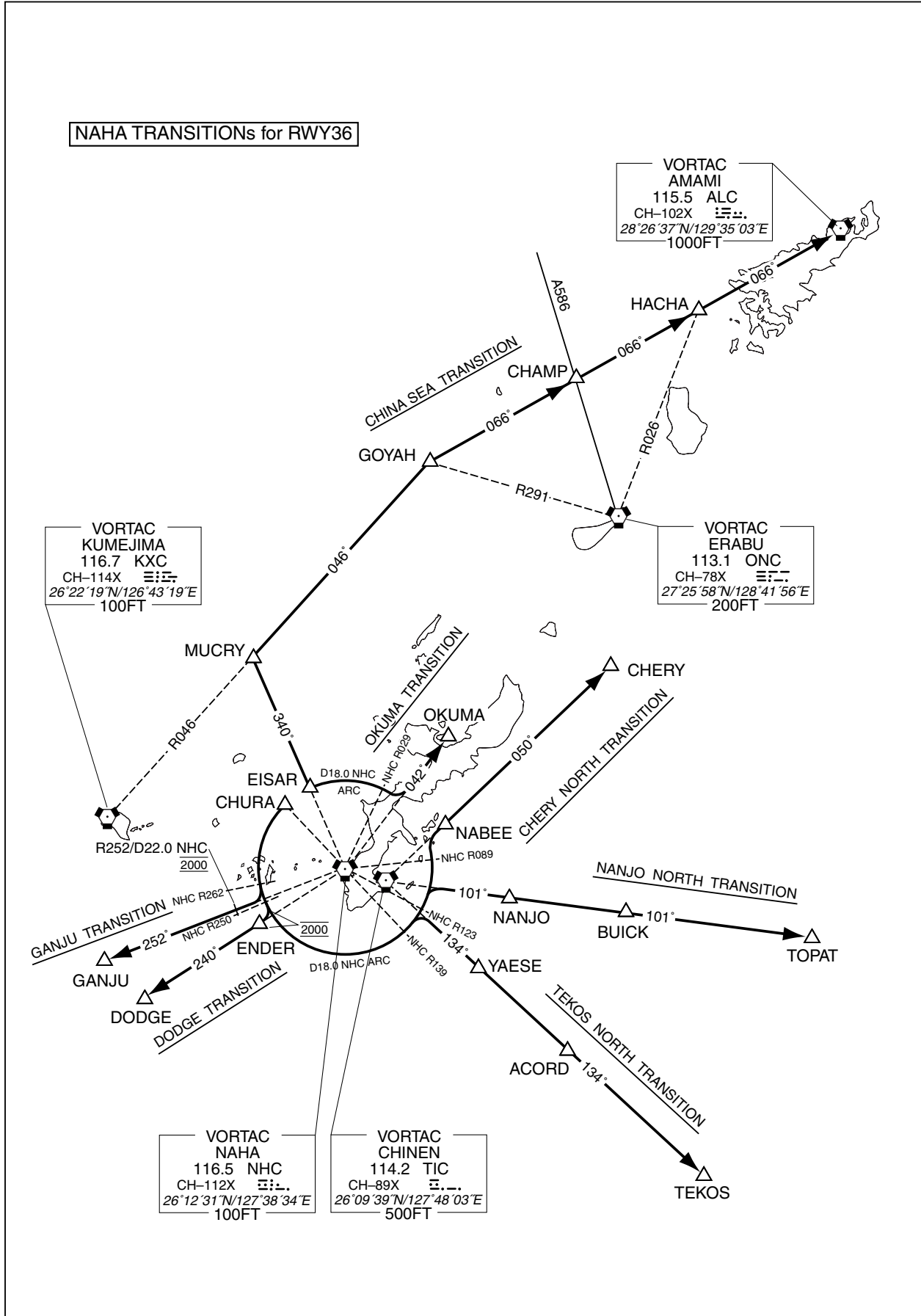
From over CHURA, via NHC 18.0DME counterclockwise ARC to intercept and proceed via TIC R134 to TEKOS via YAESE, ACORD.

Cross NHC R240 at 2000FT.

STANDARD DEPARTURE CHART-INSTRUMENT

ROAH / NAHA

TRANSITION

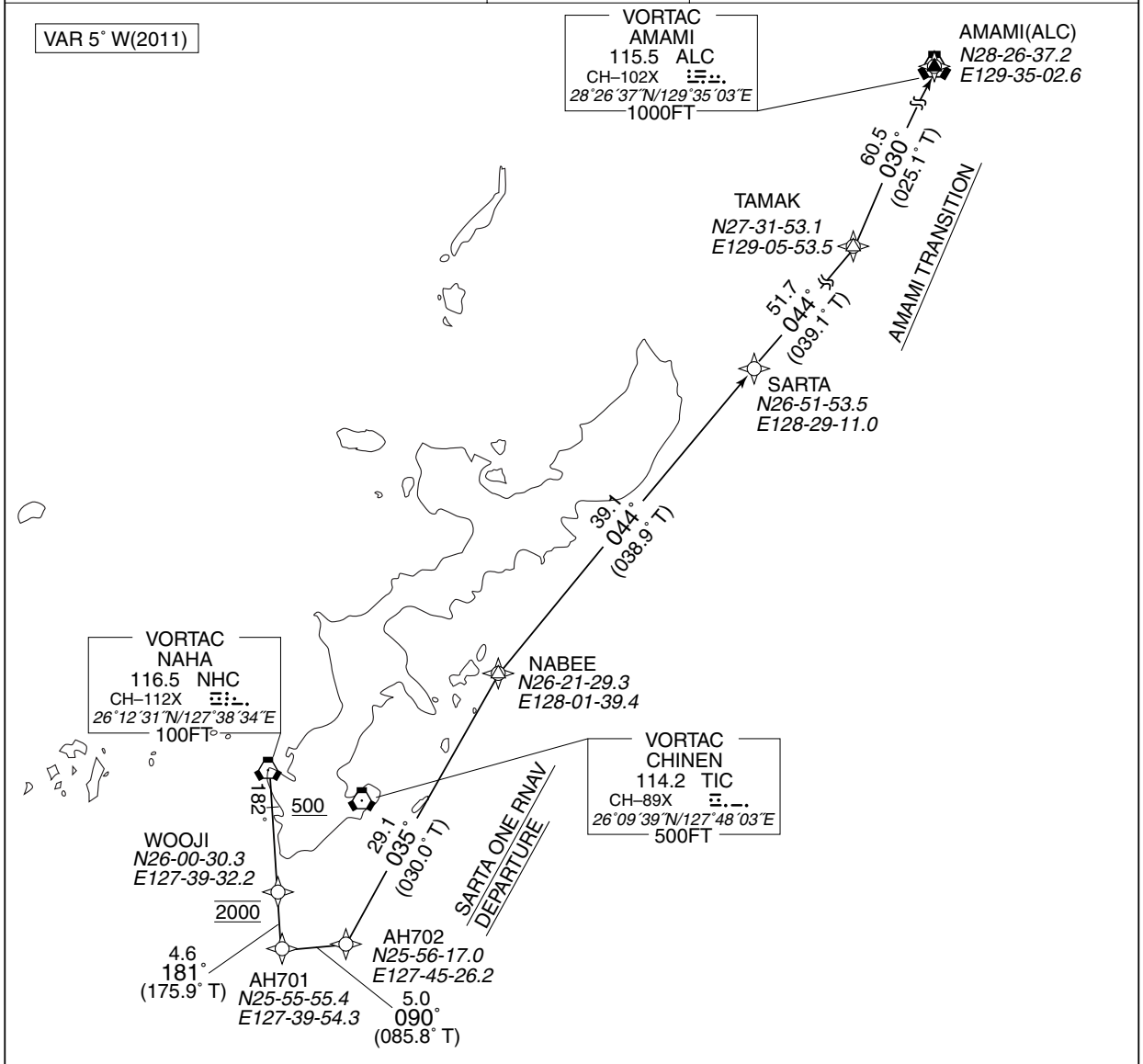


STANDARD DEPARTURE CHART-INSTRUMENT

ROAH / NAHA

RNAV SID and TRANSITION

SARTA ONE RNAV DEPARTURE		RNAV 1	
Note 1) DME/DME/IRU or GNSS required. ※The aircraft equipped with only DME/DME/IRU must be able to update its position without delay at the starting point of take-off roll. 2) RADAR service required.	Critical DME	NHC, TIC	12NM to WOOJI - WOOJI WOOJI - AH701 AH701 - AH702 AH702 - 20NM to NABEE
		NHC, ONC	25NM to SARTA - 22NM to SARTA 2NM to SARTA - SARTA
		NHC	NABEE - 25NM to SARTA
	DME GAP	RWY18 DER - 12NM to WOOJI 20NM to NABEE - NABEE 22NM to SARTA - 2NM to SARTA	
Inappropriate Nav aids	See AD1.1.6.10.3. Inappropriate NAVAIDs for RNAV1		



SARTA ONE RNAV DEPARTURE
 RWY18 : Climb on HDG182° at or above 500FT, direct to WOOJI at 2000FT, to AH701, to AH702, to NABEE, to SARTA.
 RWY36 : (Not established)

AMAMI TRANSITION
 From SARTA, to TAMAK, to AMAMI(ALC).

STANDARD DEPARTURE CHART-INSTRUMENT

ROAH / NAHA

➔ RNAV SID and TRANSITION

SARTA ONE RNAV DEPARTURE

RWY18

Rcmd. Path Terminator	Fix ID (Waypoint Name)	Fly Over	Distance (NM)	MAG Track (TRUE Track)	Turn Direction	Altitude (FT)	Speed Limit(KIAS)	Vertical Angle	Navigation Performance
VA	—	—	—	182° (177.3°)	—	+500	—	—	RNAV1
DF	WOOJI	—	—	—	—	2000	—	—	RNAV1
TF	AH701	—	4.6	181° (175.9°)	—	—	—	—	RNAV1
TF	AH702	—	5.0	090° (085.8°)	—	—	—	—	RNAV1
TF	NABEE	—	29.1	035° (030.0°)	—	—	—	—	RNAV1
TF	SARTA	—	39.1	044° (038.9°)	—	—	—	—	RNAV1

RWY36

(Not established)

AMAMI TRANSITION

Critical DME	NHC, ONC	SARTA - 38NM to TAMAK
	ALC, TKE	45NM to ALC - 15NM to ALC
DME GAP	15NM to ALC - ALC	

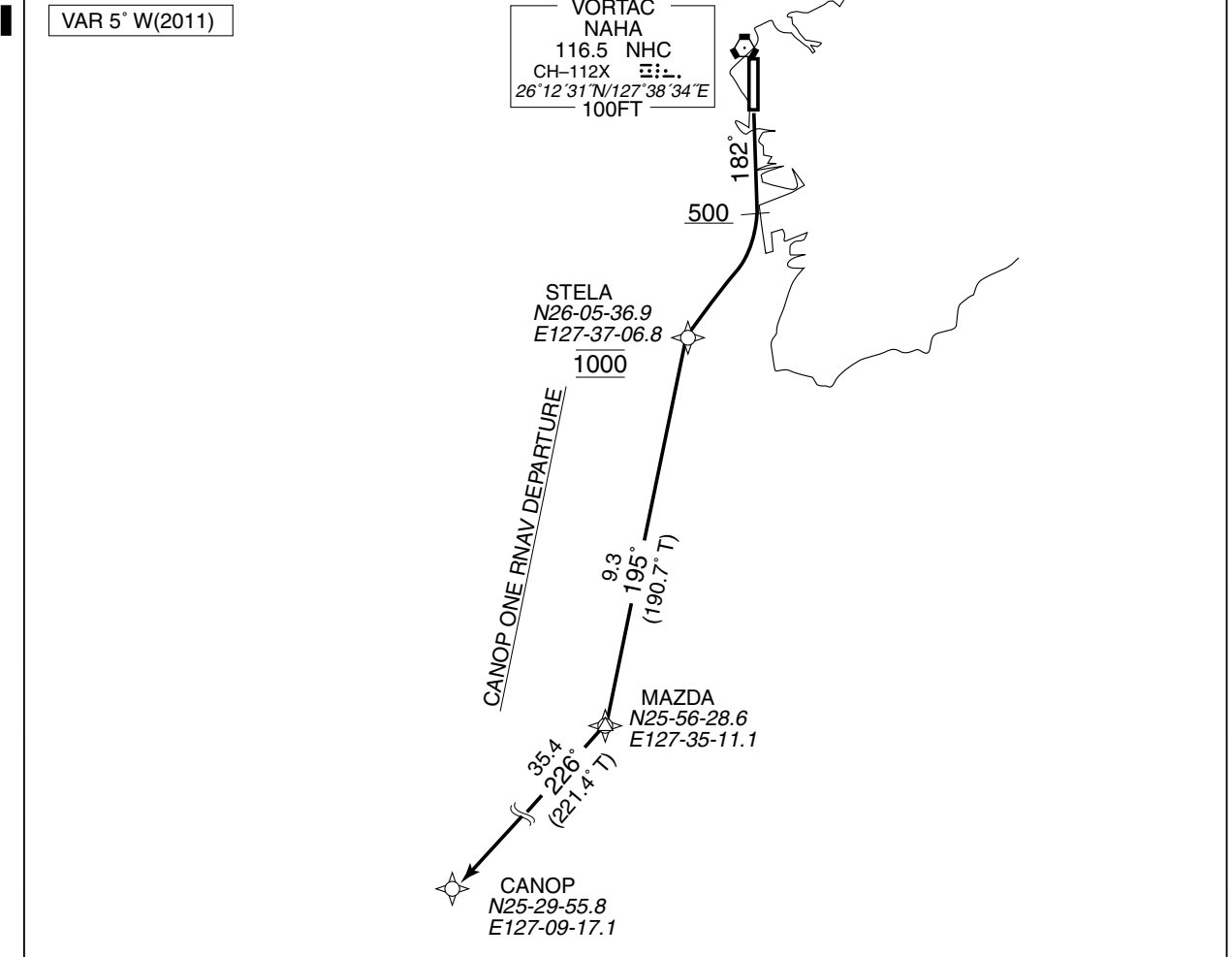
Rcmd. Path Terminator	Fix ID (Waypoint Name)	Fly Over	Distance (NM)	MAG Track (TRUE Track)	Turn Direction	Altitude (FT)	Speed Limit(KIAS)	Vertical Angle	Navigation Performance
IF	SARTA	—	—	—	—	—	—	—	RNAV1
TF	TAMAK	—	51.7	044° (039.1°)	—	—	—	—	RNAV1
TF	AMAMI (ALC)	—	60.5	030° (025.1°)	—	—	—	—	RNAV1

STANDARD DEPARTURE CHART-INSTRUMENT

ROAH / NAHA

RNAV SID

CANOP ONE RNAV DEPARTURE			RNAV 1
Note 1) DME/DME/IRU or GNSS required. ※ The aircraft equipped with only DME/DME/IRU must be able to update its position without delay at the starting point of take-off roll. 2) RADAR service required.	Critical DME	NHC, TIC	6NM to STELA - STELA STELA - MAZDA MAZDA - 34NM to CANOP
	DME GAP	RWY18 DER - 6NM to STELA 34NM to CANOP - CANOP	
	Inappropriate Nav aids	See AD1.1.6.10.3. Inappropriate NAVAIDs for RNAV1	



CANOP ONE RNAV DEPARTURE
 RWY18 : Climb on HDG182° at or above 500FT, direct to STELA at 1000FT, to MAZDA, to CANOP.
 RWY36 : (Not established)

CANOP ONE RNAV DEPARTURE

RWY18

Rcmd. Path Terminator	Fix ID (Waypoint Name)	Fly Over	Distance (NM)	MAG Track (TRUE Track)	Turn Direction	Altitude (FT)	Speed Limit(KIAS)	Vertical Angle	Navigation Performance
VA	--	--	--	182° (177.3°)	--	+500	--	--	RNAV1
DF	STELA	--	--	--	--	1000	--	--	RNAV1
TF	MAZDA	--	9.3	195° (190.7°)	--	--	--	--	RNAV1
TF	CANOP	--	35.4	226° (221.4°)	--	--	--	--	RNAV1

RWY36
(Not established)

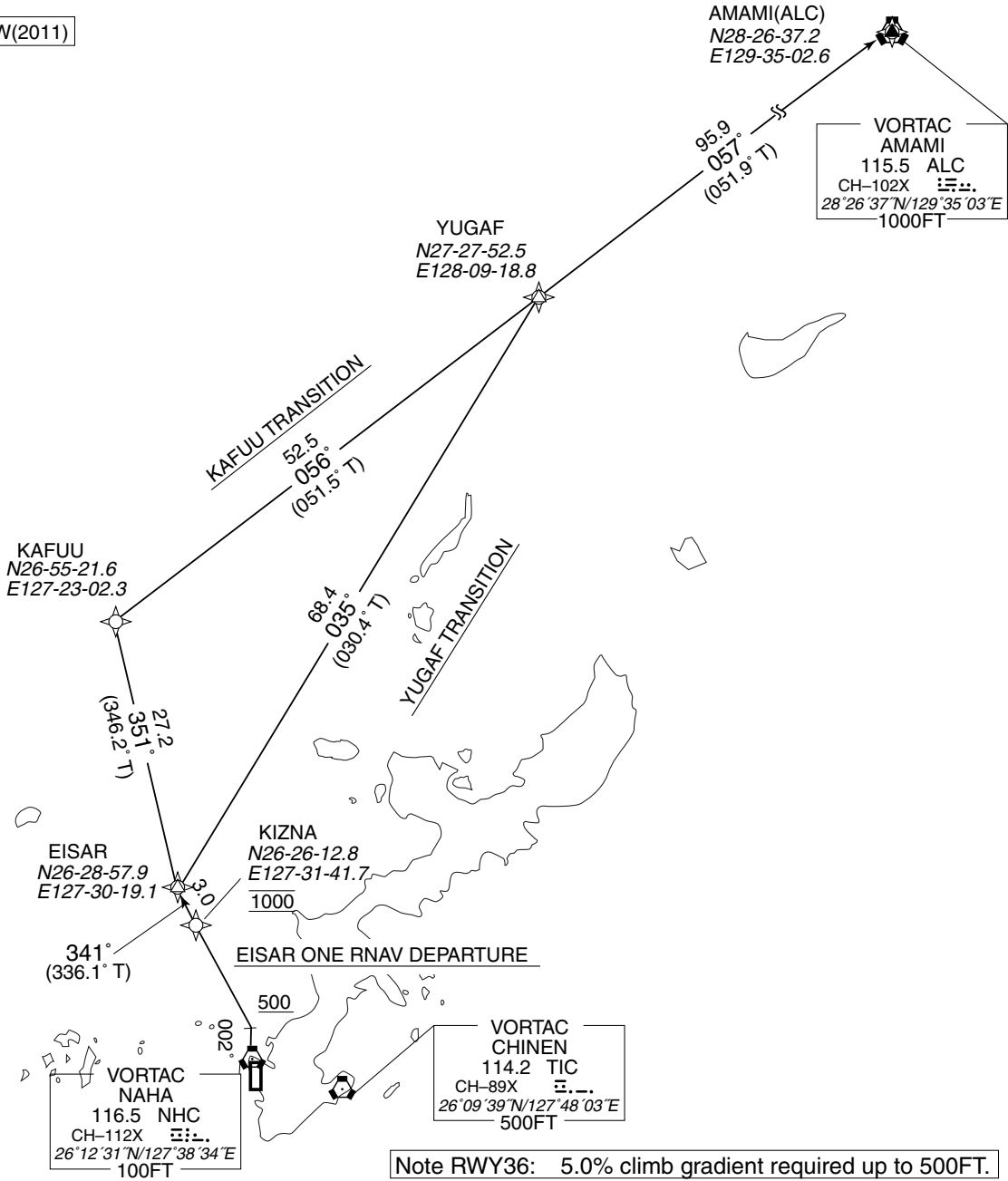
STANDARD DEPARTURE CHART-INSTRUMENT

ROAH / NAHA

RNAV SID and TRANSITION

EISAR ONE RNAV DEPARTURE		RNAV 1
Note 1) DME/DME/IRU or GNSS required. ※The aircraft equipped with only DME/DME/IRU must be able to update its position without delay at the starting point of take-off roll. 2) RADAR service required.	Critical DME	-
	DME GAP	RWY36 DER - EISAR
	Inappropriate Nav aids	See AD1.1.6.10.3. Inappropriate NAVAIDs for RNAV1

VAR 5° W(2011)



Note RWY36: 5.0% climb gradient required up to 500FT.

EISAR ONE RNAV DEPARTURE

RWY18 : (Not established)

RWY36 : Climb on HDG002° at or above 500FT, turn left direct to KIZNA at 1000FT, to EISAR.

KAFUU TRANSITION

From EISAR, to KAFUU, to YUGAF, to AMAMI(ALC).

YUGAF TRANSITION

From EISAR, to YUGAF, to AMAMI(ALC).

STANDARD DEPARTURE CHART-INSTRUMENT

ROAH / NAHA

➔ RNAV SID and TRANSITION

EISAR ONE RNAV DEPARTURE

RWY18

(Not established)

RWY36

Rcmd. Path Terminator	Fix ID (Waypoint Name)	Fly Over	Distance (NM)	MAG Track (TRUE Track)	Turn Direction	Altitude (FT)	Speed Limit(KIAS)	Vertical Angle	Navigation Performance
VA	-	-	-	002° (357.3°)	-	+500	-	-	RNAV1
DF	KIZNA	-	-	-	L	1000	-	-	RNAV1
TF	EISAR	-	3.0	341° (336.1°)	-	-	-	-	RNAV1

KAFUU TRANSITION

Critical DME	KXC	15NM to KAFUU - KAFUU KAFUU - 45NM to YUGAF
	ALC	45NM to ALC - 40NM to ALC
DME GAP	EISAR - 15NM to KAFUU 32NM to ALC - 17NM to ALC 10NM to ALC - ALC	

Rcmd. Path Terminator	Fix ID (Waypoint Name)	Fly Over	Distance (NM)	MAG Track (TRUE Track)	Turn Direction	Altitude (FT)	Speed Limit(KIAS)	Vertical Angle	Navigation Performance
IF	EISAR	-	-	-	-	-	-	-	RNAV1
TF	KAFUU	-	27.2	351° (346.2°)	-	-	-	-	RNAV1
TF	YUGAF	-	52.5	056° (051.5°)	-	-	-	-	RNAV1
TF	AMAMI (ALC)	-	95.9	057° (051.9°)	-	-	-	-	RNAV1

YUGAF TRANSITION

Critical DME	ALC	45NM to ALC - 40NM to ALC
DME GAP	EISAR - 50NM to YUGAF 32NM to ALC - 17NM to ALC 10NM to ALC - ALC	

Rcmd. Path Terminator	Fix ID (Waypoint Name)	Fly Over	Distance (NM)	MAG Track (TRUE Track)	Turn Direction	Altitude (FT)	Speed Limit(KIAS)	Vertical Angle	Navigation Performance
IF	EISAR	-	-	-	-	-	-	-	RNAV1
TF	YUGAF	-	68.4	035° (030.4°)	-	-	-	-	RNAV1
TF	AMAMI (ALC)	-	95.9	057° (051.9°)	-	-	-	-	RNAV1

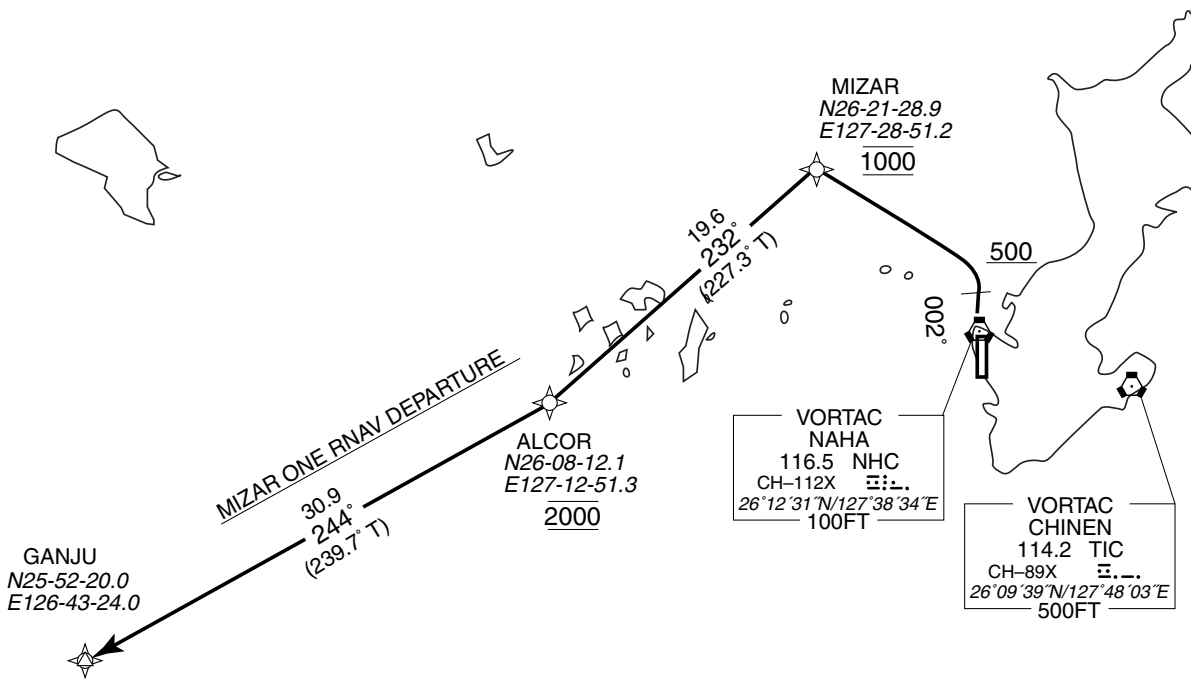
STANDARD DEPARTURE CHART-INSTRUMENT

ROAH / NAHA

RNAV SID

MIZAR ONE RNAV DEPARTURE			RNAV 1
Note 1) DME/DME/IRU or GNSS required. ※The aircraft equipped with only DME/DME/IRU must be able to update its position without delay at the starting point of take-off roll. 2) RADAR service required.	Critical DME	KXC	18NM to GANJU - GANJU
	DME GAP	RWY36 DER - 18NM to GANJU	
	Inappropriate Nav aids	See AD1.1.6.10.3. Inappropriate NAVAIDS for RNAV1	

VAR 5° W(2011)



Note RWY36: 5.0% climb gradient required up to 500FT.

MIZAR ONE RNAV DEPARTURE

RWY18 : (Not established)

RWY36 : Climb on HDG002° at or above 500FT, turn left direct to MIZAR at 1000FT, to ALCOR at 2000FT, to GANJU.

MIZAR ONE RNAV DEPARTURE

RWY18

(Not established)

RWY36

Rcmd. Path Terminator	Fix ID (Waypoint Name)	Fly Over	Distance (NM)	MAG Track (TRUE Track)	Turn Direction	Altitude (FT)	Speed Limit(KIAS)	Vertical Angle	Navigation Performance
VA	-	-	-	002° (357.3°)	-	+500	-	-	RNAV1
DF	MIZAR	-	-	-	L	1000	-	-	RNAV1
TF	ALCOR	-	19.6	232° (227.3°)	-	2000	-	-	RNAV1
TF	GANJU	-	30.9	244° (239.7°)	-	-	-	-	RNAV1

STANDARD ARRIVAL CHART-INSTRUMENT

ROAH / NAHA

STAR

MIZET ARRIVAL

From over ONC VORTAC, proceed via ONC R262 to MIZET, via KXC R046 to MUCRY, via NHC R340 to EISAR.

Cross EISAR at or above 3000FT.

CORAL NORTH ARRIVAL

From over CORAL, proceed via NHC R240, via NHC 18.0DME clockwise ARC to EISAR.

Cross EISAR at or above 3000FT.

OKUMA NORTH ARRIVAL

From over OKUMA, proceed via NHC 35.0DME counterclockwise ARC to intercept and proceed via NHC R006 to YVETT.

Cross YVETT at 3000FT.

NANJO NORTH ARRIVAL

From over NANJO, proceed via TIC R101 to TIC VORTAC, via TIC R293 to NHC VORTAC, via NHC R340 to EISAR.

Cross EISAR at or above 3000FT.

YAESE NORTH ARRIVAL

From over YAESE, proceed via TIC R134 to TIC VORTAC, via TIC R293 to NHC VORTAC, via NHC R340 to EISAR.

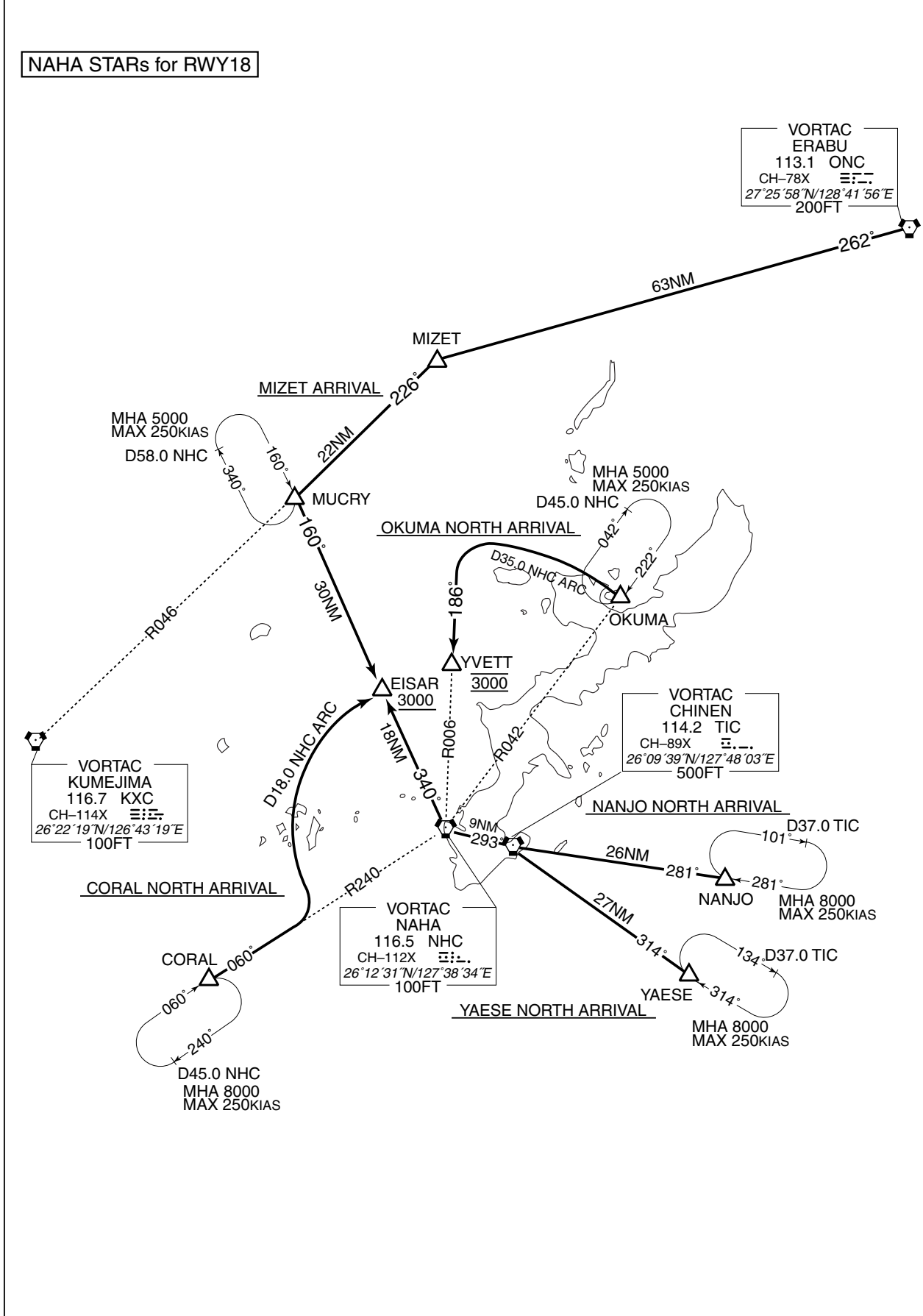
Cross EISAR at or above 3000FT.

STANDARD ARRIVAL CHART-INSTRUMENT

ROAH / NAHA

STAR

NAHA STARs for RWY18



STANDARD ARRIVAL CHART-INSTRUMENT

ROAH / NAHA

STAR

CORAL SOUTH ARRIVAL

From over CORAL, proceed via NHC R240, via NHC 18.0DME counterclockwise ARC to intercept and proceed to NHC R181 to GRASE.

Cross GRASE at or above 2000FT.

OKUMA SOUTH ARRIVAL

From over OKUMA, proceed via NHC R042, via NHC 18.0DME clockwise ARC to intercept and proceed via NHC R181 to GRASE.

Cross NHC R090 at or above 3000FT, cross GRASE at or above 2000FT.

NANJO SOUTH ARRIVAL

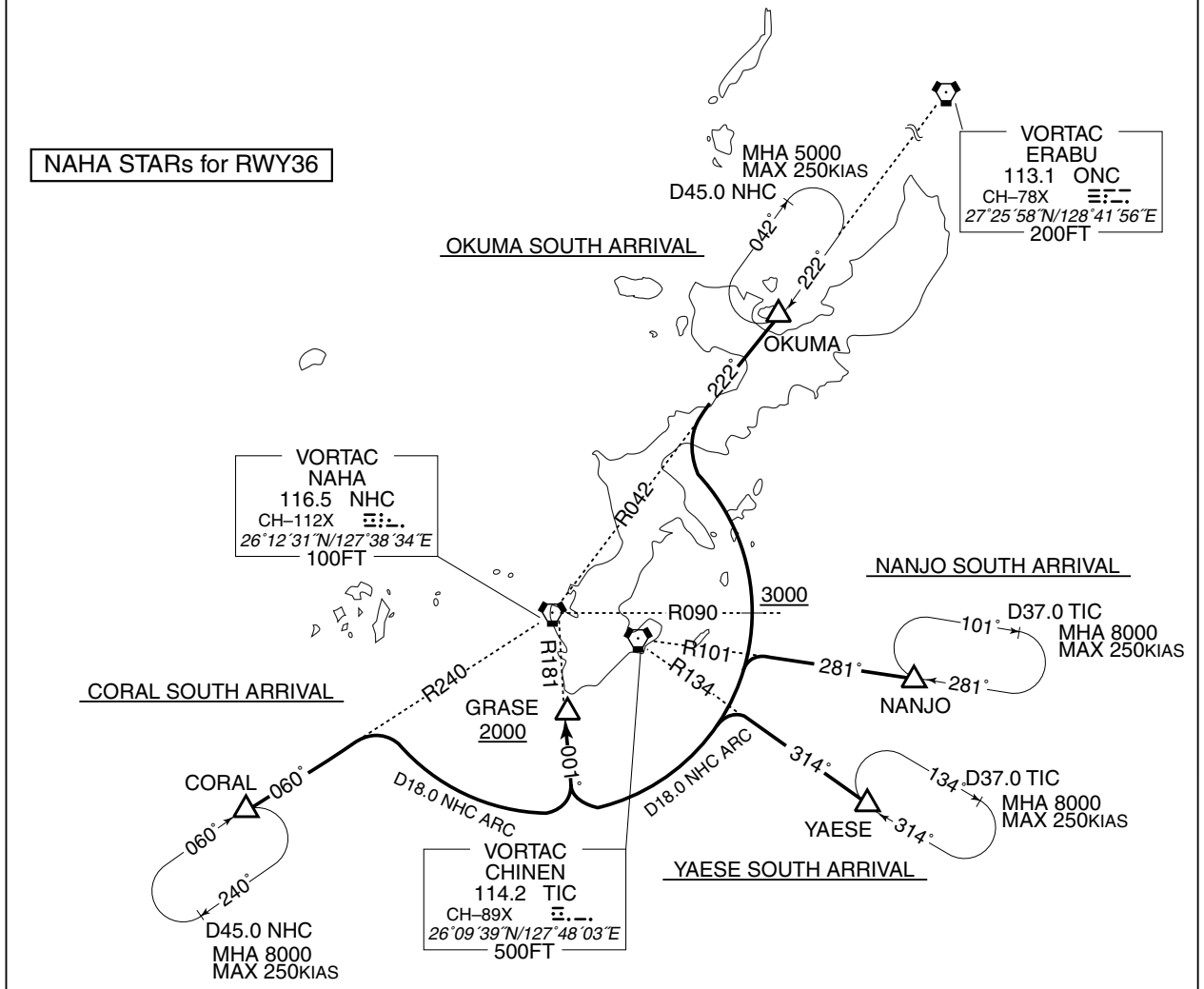
From over NANJO, proceed via TIC R101, via NHC 18.0DME clockwise ARC to intercept and proceed to NHC R181 to GRASE.

Cross GRASE at or above 2000FT.

YAESE SOUTH ARRIVAL

From over YAESE, proceed via TIC R134, via NHC 18.0DME clockwise ARC to intercept and proceed to NHC R181 to GRASE.

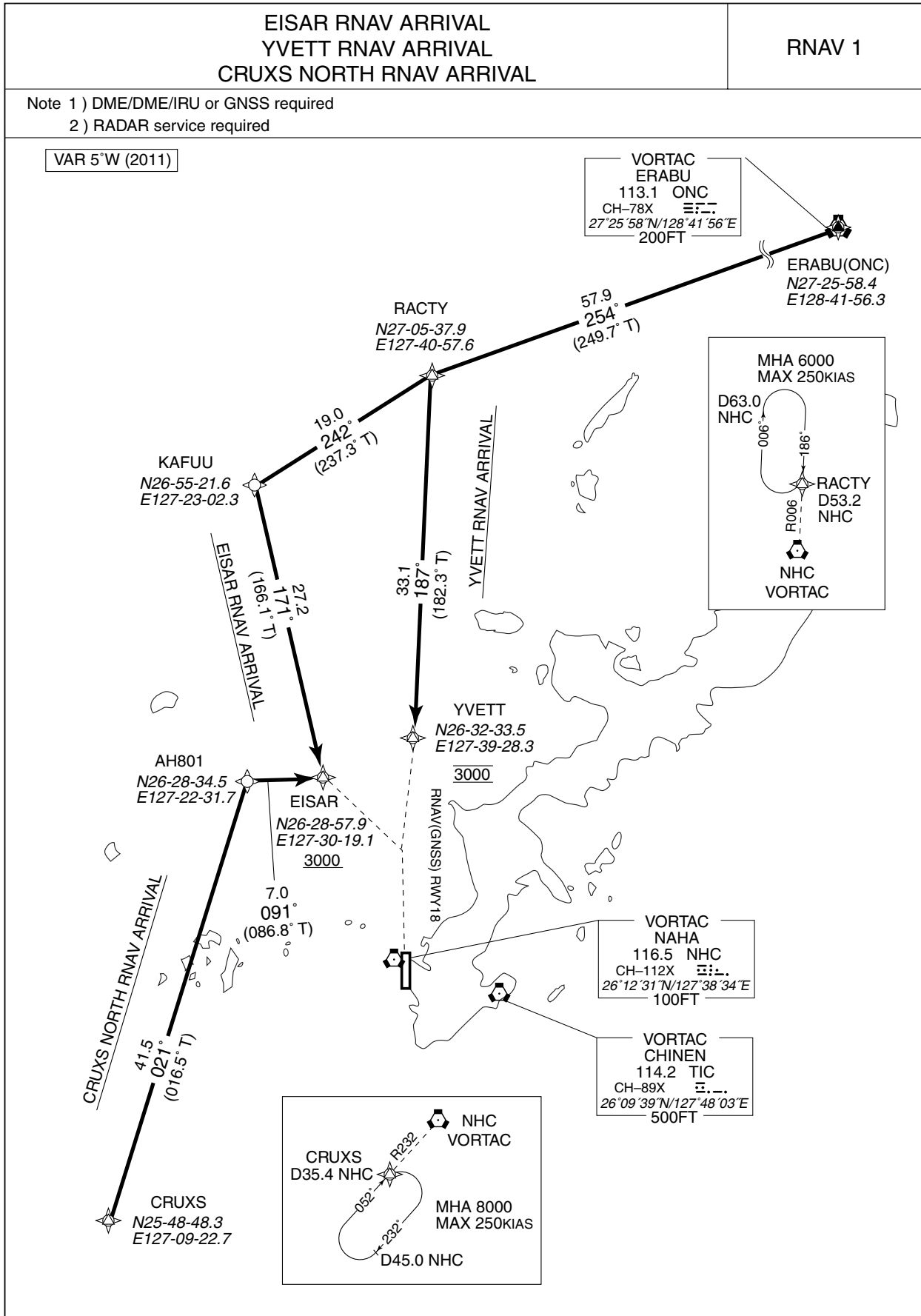
Cross GRASE at or above 2000FT.



STANDARD ARRIVAL CHART-INSTRUMENT

ROAH / NAHA

➔ RNAV STAR RWY 18



STANDARD ARRIVAL CHART-INSTRUMENT

ROAH / NAHA

RNAV STAR RWY 18

EISAR RNAV ARRIVAL

From ERABU(ONC), to RACTY, to KAFUU, to EISAR at or above 3000FT.

FIX	DESIGNATION	COORDINATES
	ERABU(ONC)	272558.4N 1284156.3E
RACTY	270537.9N 1274057.6E	
KAFUU	265521.6N 1272302.3E	
EISAR	262857.9N 1273019.1E	
Critical DME	ONC	54.9NM to RACTY - 42.0NM to RACTY
	KXC	10NM to KAFUU - KAFUU KAFUU - 10NM to EISAR
DME GAP	ONC - 54.9NM to RACTY 10NM to EISAR - EISAR	
Inappropriate Navaids	See AD1.1.6.10.3. Inappropriate NAVAIDs for RNAV1.	

Rcmd. Path Terminator	Fix ID (Waypoint Name)	Fly Over	Distance (NM)	MAG Track (TRUE Track)	Turn Direction	Altitude (FT)	Speed Limit (KIAS)	Vertical Angle	Navigation Performance
IF	ERABU (ONC)	—	—	—	—	—	—	—	RNAV1
TF	RACTY	—	57.9	254° (249.7°)	—	—	—	—	RNAV1
TF	KAFUU	—	19.0	242° (237.3°)	—	—	—	—	RNAV1
TF	EISAR	—	27.2	171° (166.1°)	—	+3000	—	—	RNAV1

YVETT RNAV ARRIVAL

From ERABU(ONC), to RACTY, to YVETT at 3000FT.

FIX	DESIGNATION	COORDINATES
	ERABU(ONC)	272558.4N 1284156.3E
RACTY	270537.9N 1274057.6E	
YVETT	263233.5N 1273928.3E	
Critical DME	ONC	54.9NM to RACTY - 42.0NM to RACTY
	KXC	23.0NM to YVETT - 13.0NM to YVETT
DME GAP	ONC - 54.9NM to RACTY 13.0NM to YVETT - YVETT	
Inappropriate Navaids	See AD1.1.6.10.3. Inappropriate NAVAIDs for RNAV1.	

Rcmd. Path Terminator	Fix ID (Waypoint Name)	Fly Over	Distance (NM)	MAG Track (TRUE Track)	Turn Direction	Altitude (FT)	Speed Limit (KIAS)	Vertical Angle	Navigation Performance
IF	ERABU (ONC)	—	—	—	—	—	—	—	RNAV1
TF	RACTY	—	57.9	254° (249.7°)	—	—	—	—	RNAV1
TF	YVETT	—	33.1	187° (182.3°)	—	3000	—	—	RNAV1

STANDARD ARRIVAL CHART-INSTRUMENT

ROAH / NAHA

➔ RNAV STAR RWY 18

CRUXS NORTH RNAV ARRIVAL

From CRUXS, to AH801, to EISAR at or above 3000FT.

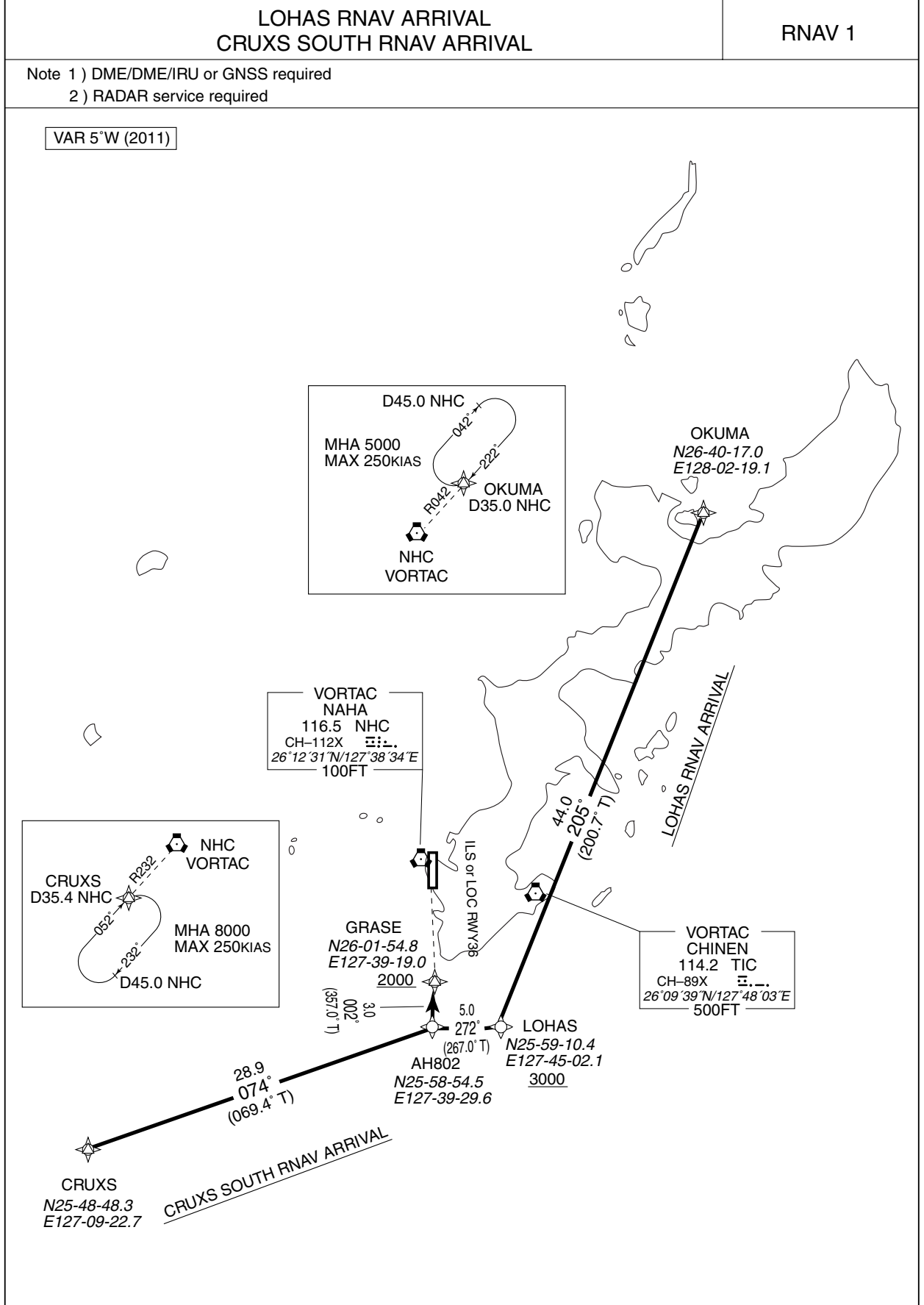
	DESIGNATION	COORDINATES
FIX	CRUXS	<i>254848.3N 1270922.7E</i>
	AH801	<i>262834.5N 1272231.7E</i>
	EISAR	<i>262857.9N 1273019.1E</i>
Critical DME	KXC	35NM to AH801 - 25NM to AH801
DME GAP	CRUXS - 35NM to AH801 25NM to AH801 - EISAR	
Inappropriate Nav aids	See AD1.1.6.10.3. Inappropriate NAVAIDs for RNAV1.	

Rcmd. Path Terminator	Fix ID (Waypoint Name)	Fly Over	Distance (NM)	MAG Track (TRUE Track)	Turn Direction	Altitude (FT)	Speed Limit (KIAS)	Vertical Angle	Navigation Performance
IF	CRUXS	—	—	—	—	—	—	—	RNAV1
TF	AH801	—	41.5	021° (016.5°)	—	—	—	—	RNAV1
TF	EISAR	—	7.0	091° (086.8°)	—	+3000	—	—	RNAV1

STANDARD ARRIVAL CHART-INSTRUMENT

ROAH / NAHA

➔ RNAV STAR RWY 36



STANDARD ARRIVAL CHART-INSTRUMENT

ROAH / NAHA

➔ RNAV STAR RWY 36

LOHAS RNAV ARRIVAL

From OKUMA, to LOHAS at or above 3000FT, to AH802, to GRASE at or above 2000FT.

FIX	DESIGNATION	COORDINATES
	OKUMA	264017.0N 1280219.1E
LOHAS	255910.4N 1274502.1E	
AH802	255854.5N 1273929.6E	
GRASE	260154.8N 1273919.0E	
Critical DME	NHC, TIC	25NM to LOHAS - 14NM to LOHAS
		8NM to LOHAS - LOHAS
		LOHAS - AH802
		AH802 - GRASE
DME GAP	OKUMA - 25NM to LOHAS 14NM to LOHAS - 8NM to LOHAS	
Inappropriate Nav aids	See AD1.1.6.10.3. Inappropriate NAVAIDs for RNAV1.	

Rcmd. Path Terminator	Fix ID (Waypoint Name)	Fly Over	Distance (NM)	MAG Track (TRUE Track)	Turn Direction	Altitude (FT)	Speed Limit (KIAS)	Vertical Angle	Navigation Performance
IF	OKUMA	—	—	—	—	—	—	—	RNAV1
TF	LOHAS	—	44.0	205° (200.7°)	—	+3000	—	—	RNAV1
TF	AH802	—	5.0	272° (267.0°)	—	—	—	—	RNAV1
TF	GRASE	—	3.0	002° (357.0°)	—	+2000	—	—	RNAV1

CRUXS SOUTH RNAV ARRIVAL

From CRUXS, to AH802, to GRASE at or above 2000FT.

FIX	DESIGNATION	COORDINATES
	CRUXS	254848.3N 1270922.7E
AH802	255854.5N 1273929.6E	
GRASE	260154.8N 1273919.0E	
Critical DME	NHC, TIC	5NM to AH802 - AH802
		AH802 - GRASE
DME GAP	CRUXS - 5NM to AH802	
Inappropriate Nav aids	See AD1.1.6.10.3. Inappropriate NAVAIDs for RNAV1.	

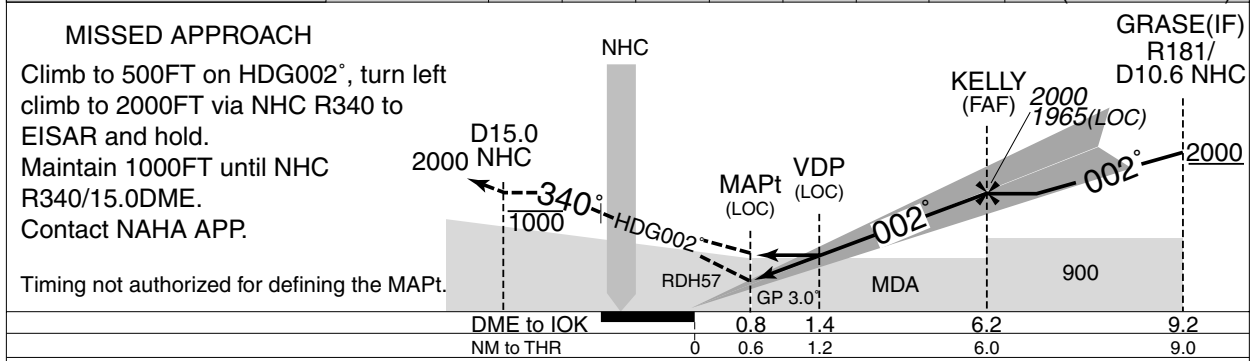
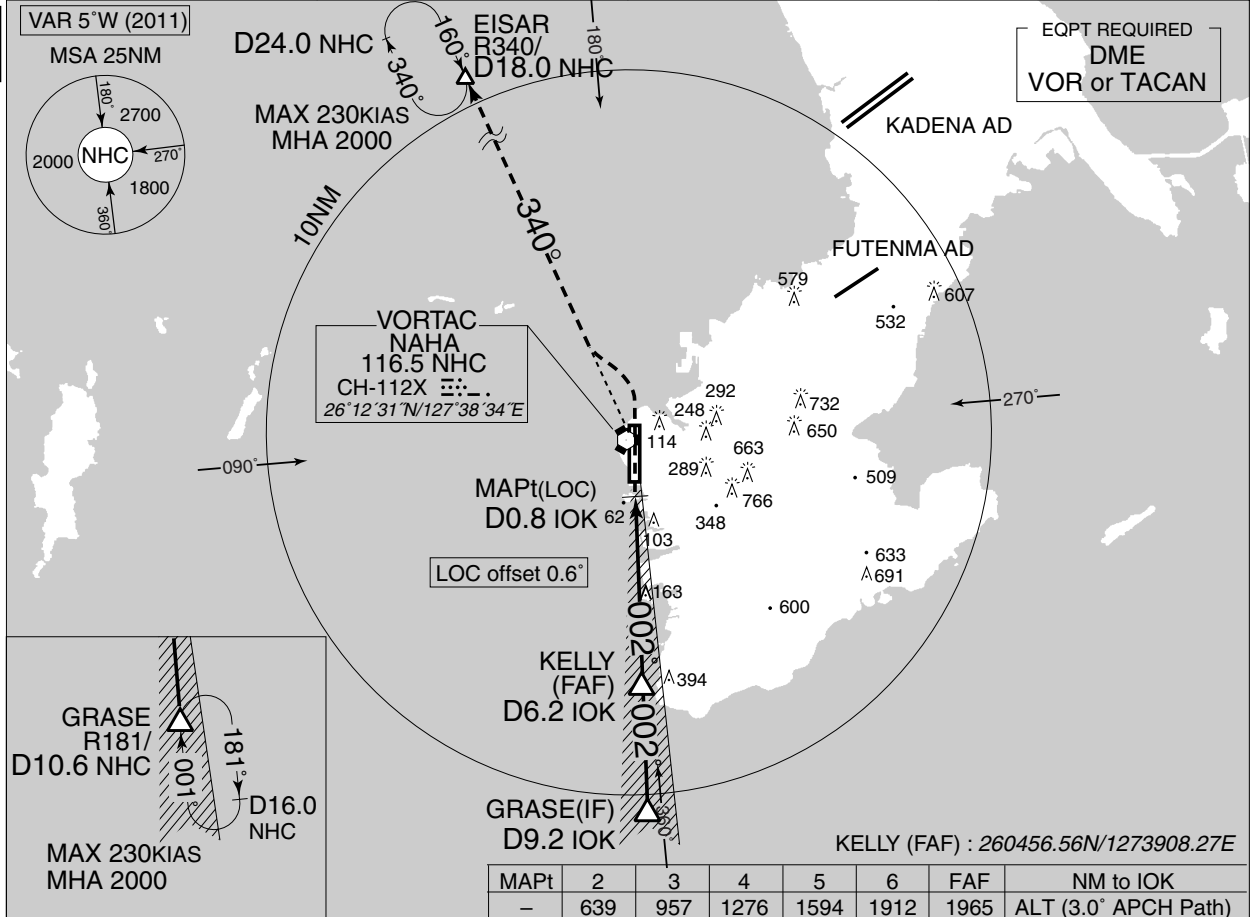
Rcmd. Path Terminator	Fix ID (Waypoint Name)	Fly Over	Distance (NM)	MAG Track (TRUE Track)	Turn Direction	Altitude (FT)	Speed Limit (KIAS)	Vertical Angle	Navigation Performance
IF	CRUXS	—	—	—	—	—	—	—	RNAV1
TF	AH802	—	28.9	074° (069.4°)	—	—	—	—	RNAV1
TF	GRASE	—	3.0	002° (357.0°)	—	+2000	—	—	RNAV1

INSTRUMENT APPROACH CHART

ROAH / NAHA

ILS or LOC RWY 36

<p>NAHA APP 119.1 - 335.8(N) 126.5 - 258.3(S)</p>	<p>ILS-LOC 110.3 IOK \equiv--- ILS-GP 335.0 ILS-DME CH-40X</p>	<p>NAHA TWR 118.1 - 126.2 308.6 - 236.6</p>	<p>RADAR AVBL ATIS 127.8 - 293.0</p>
---	---	---	--



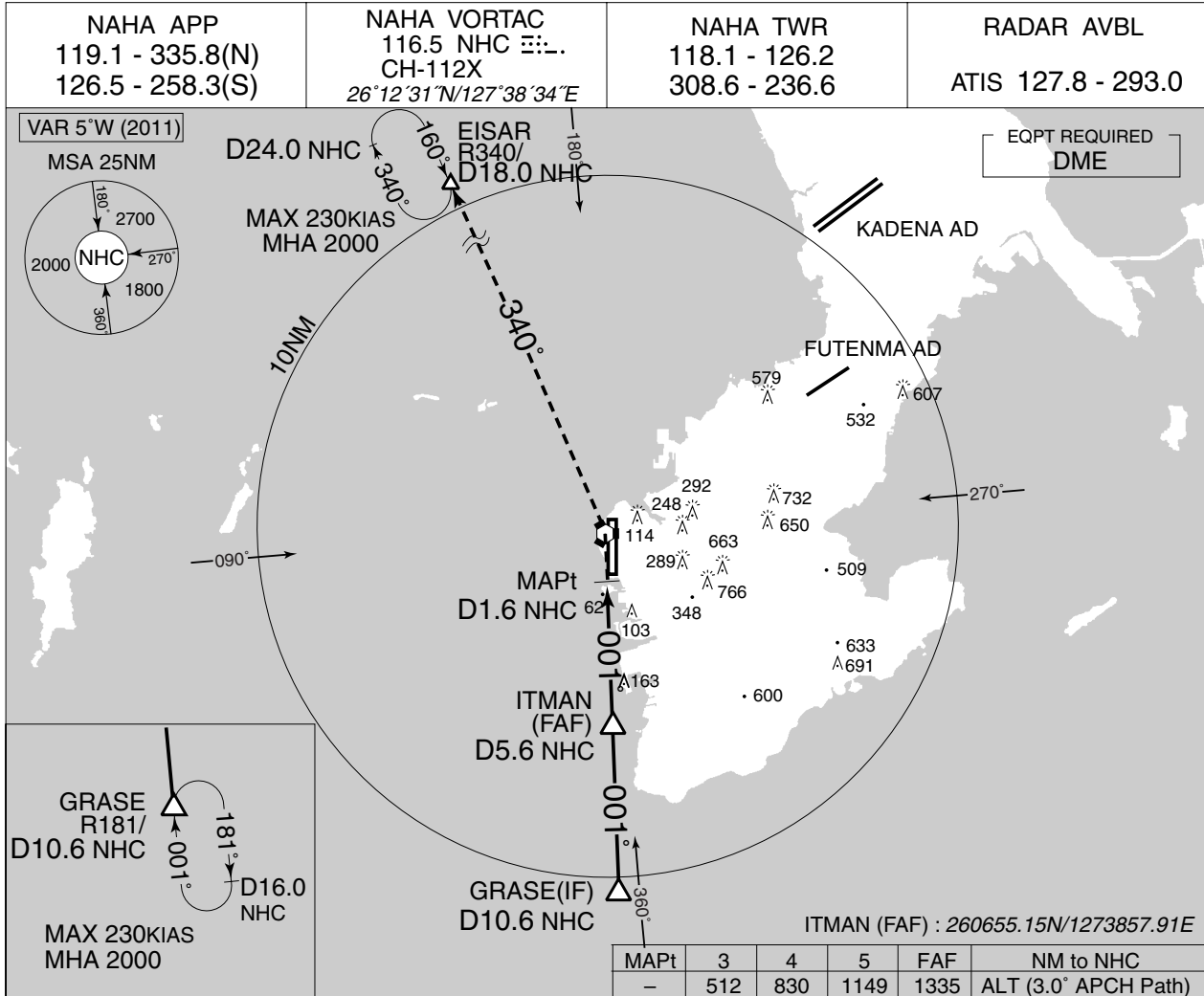
MINIMA		THR elev. 9		AD elev. 11		
CAT	CAT I		LOC		CIRCLING	
	DA(H)	RVR/CMV	MDA(H)	RVR/CMV	MDA(H)	VIS
A				900		1600
B	292 (283)	650	420 (409)	1000	500 (489)	2400
C				1400		
D				570 (559)		

Circling to WEST side of RWY only.

INSTRUMENT APPROACH CHART

ROAH / NAHA

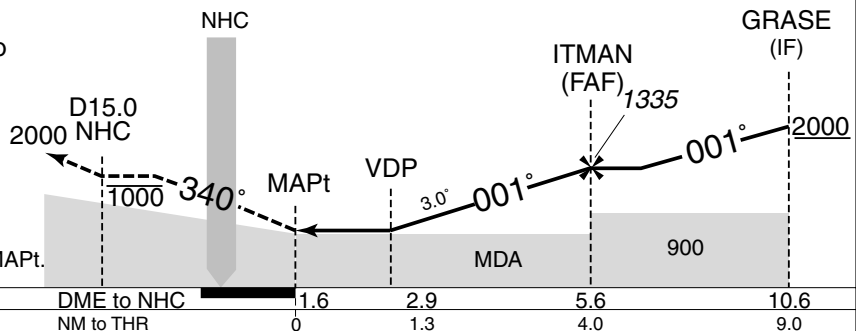
VOR or TACAN Z RWY 36



MISSED APPROACH

Climb to 2000FT via NHC R340 to EISAR and hold.
 Maintain 1000FT until NHC R340/15.0DME.
 Contact NAHA APP.

Timing not authorized for defining the MAPt.



MINIMA		THR elev. 9	AD elev. 11	
CAT			CIRCLING	
	MDA(H)	RVR/CMV	MDA(H)	VIS
A	450 (439)	900	500 (489)	1600
B		1000		2400
C		1400	570 (559)	3200
D				

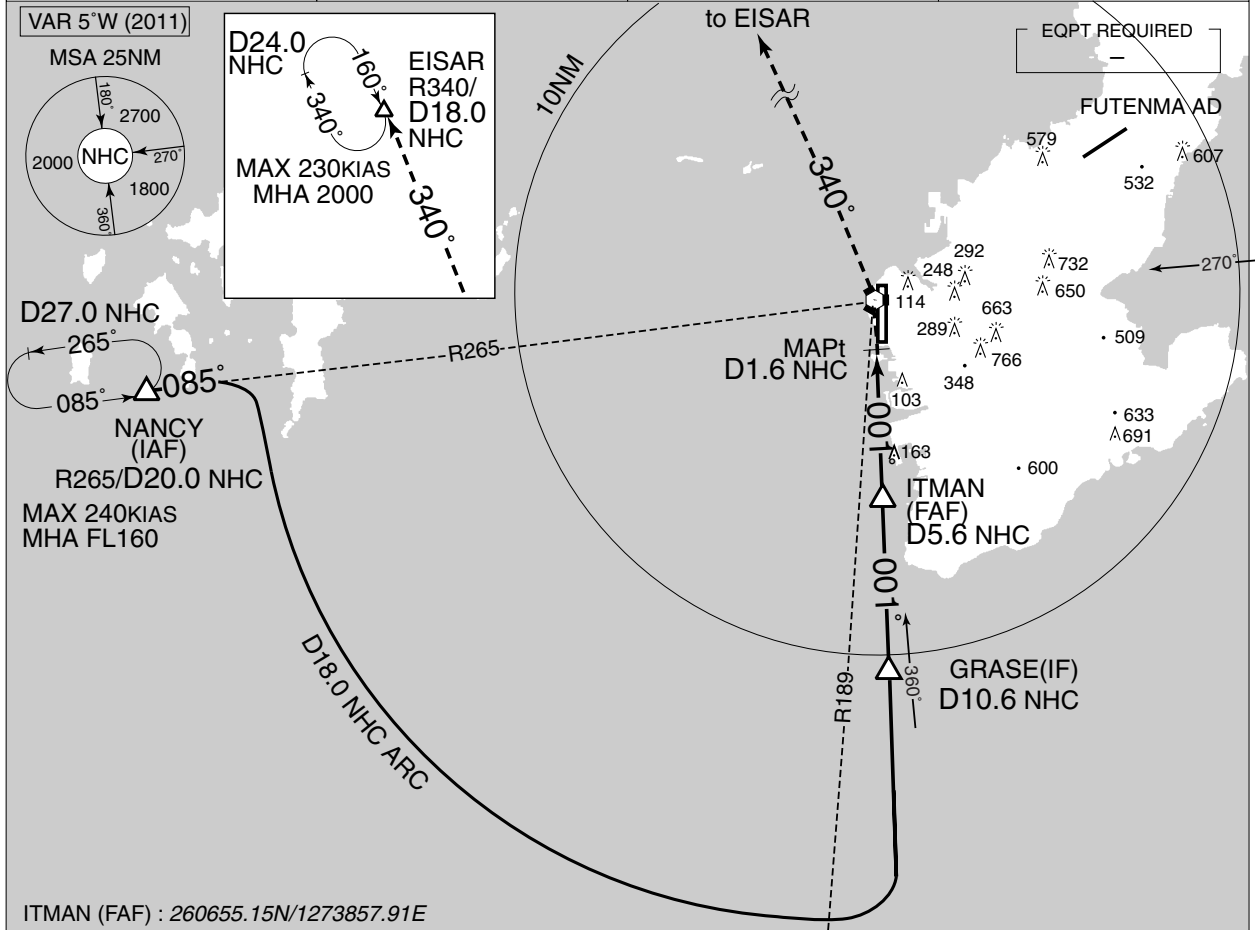
Circling to WEST side of RWY only.

INSTRUMENT APPROACH CHART

ROAH / NAHA

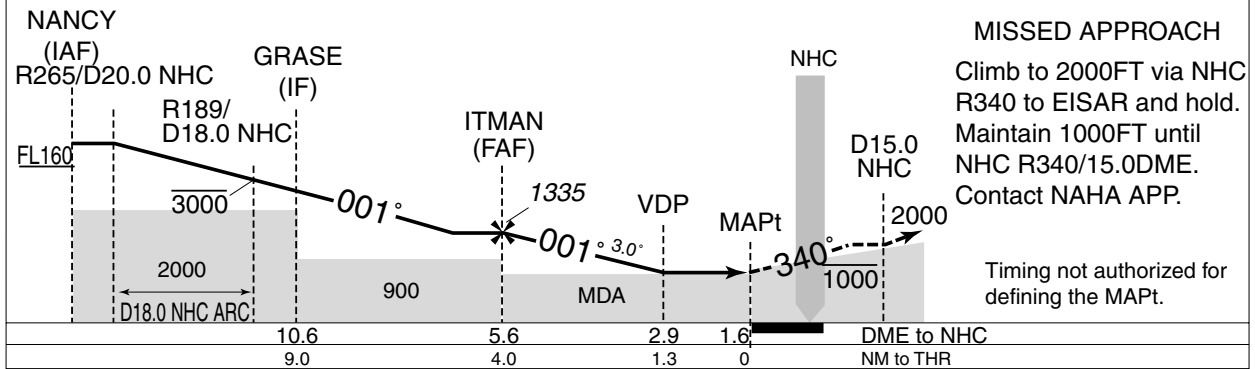
TACAN Y RWY 36

<p>NAHA APP 119.1 - 335.8(N) 126.5 - 258.3(S)</p>	<p>NAHA VORTAC 116.5 NHC CH-112X 26°12'31"N/127°38'34"E</p>	<p>NAHA TWR 118.1 - 126.2 308.6 - 236.6</p>	<p>RADAR AVBL ATIS 127.8 - 293.0</p>
---	---	---	--



ITMAN (FAF) : 260655.15N/1273857.91E

MAPt	3	4	5	FAF	NM to NHC
-	512	830	1149	1335	ALT (3.0° APCH Path)



MISSED APPROACH
Climb to 2000FT via NHC R340 to EISAR and hold. Maintain 1000FT until NHC R340/15.0DME. Contact NAHA APP.
Timing not authorized for defining the MAPt.

MINIMA		THR elev. 9	AD elev. 11	
CAT	MDA(H)	RVR/CMV	CIRCLING	
			MDA(H)	VIS
A	450 (439)	900	500 (489)	1600
B		1000		2400
C		1400	570 (559)	3200
D				

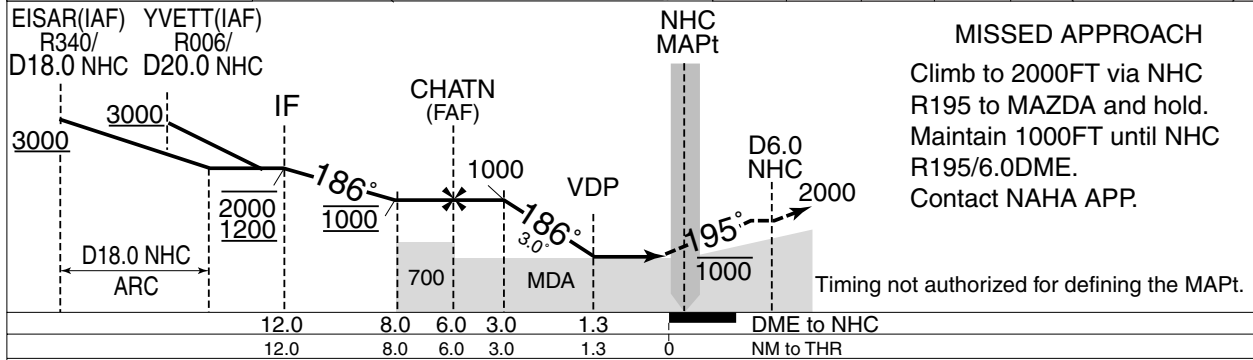
Circling to WEST side of RWY only.

INSTRUMENT APPROACH CHART

ROAH / NAHA

VOR or TACAN Z RWY 18

NAHA APP 119.1 - 335.8(N) 126.5 - 258.3(S)	NAHA VORTAC 116.5 NHC 26°12'31"N/127°38'34"E CH-112X	NAHA TWR 118.1 - 126.2 308.6 - 236.6	RADAR AVBL ATIS 127.8 - 293.0
--	--	--	----------------------------------



MINIMA		THR elev. 11	AD elev. 11	
CAT	MDA(H)	RVR/ CMV	CIRCLING	
			MDA(H)	VIS
A	420 (409)	1200	500 (489)	1600
B		1300		
C		1400		2400
D		1600		570 (559)

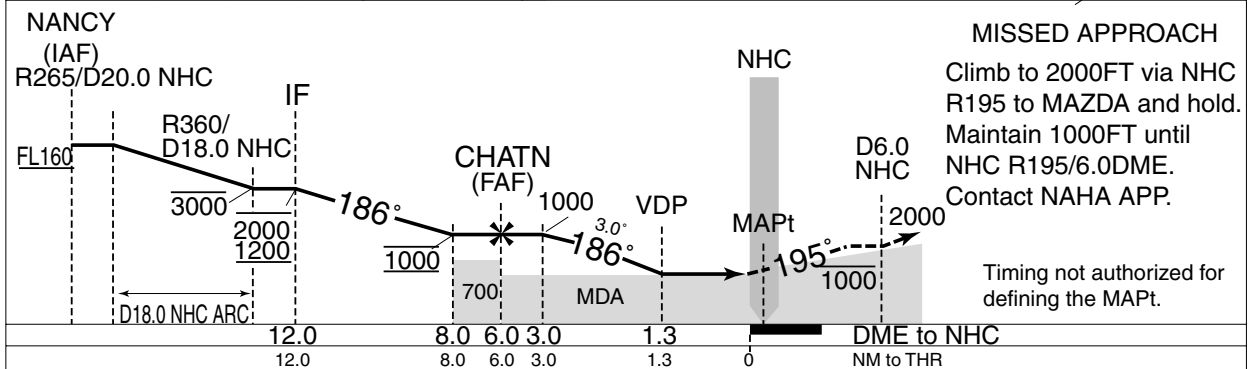
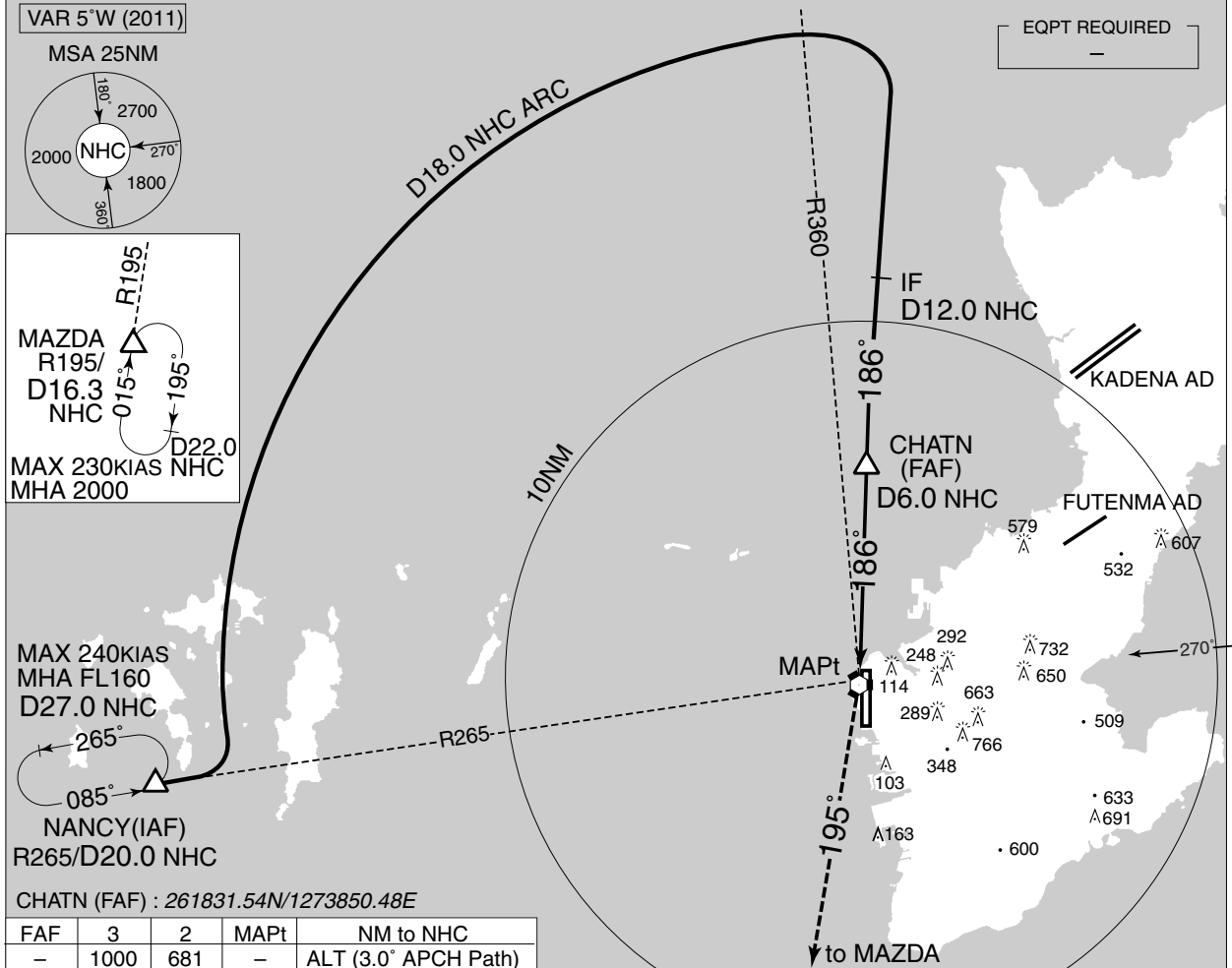
Circling to WEST side of RWY only.

INSTRUMENT APPROACH CHART

ROAH / NAHA

TACAN Y RWY 18

NAHA APP 119.1 - 335.8(N) 126.5 - 258.3(S)	NAHA VORTAC 116.5 NHC CH-112X 26°12'31"N/127°38'34"E	NAHA TWR 118.1 - 126.2 308.6 - 236.6	RADAR AVBL ATIS 127.8 - 293.0
--	---	--	----------------------------------



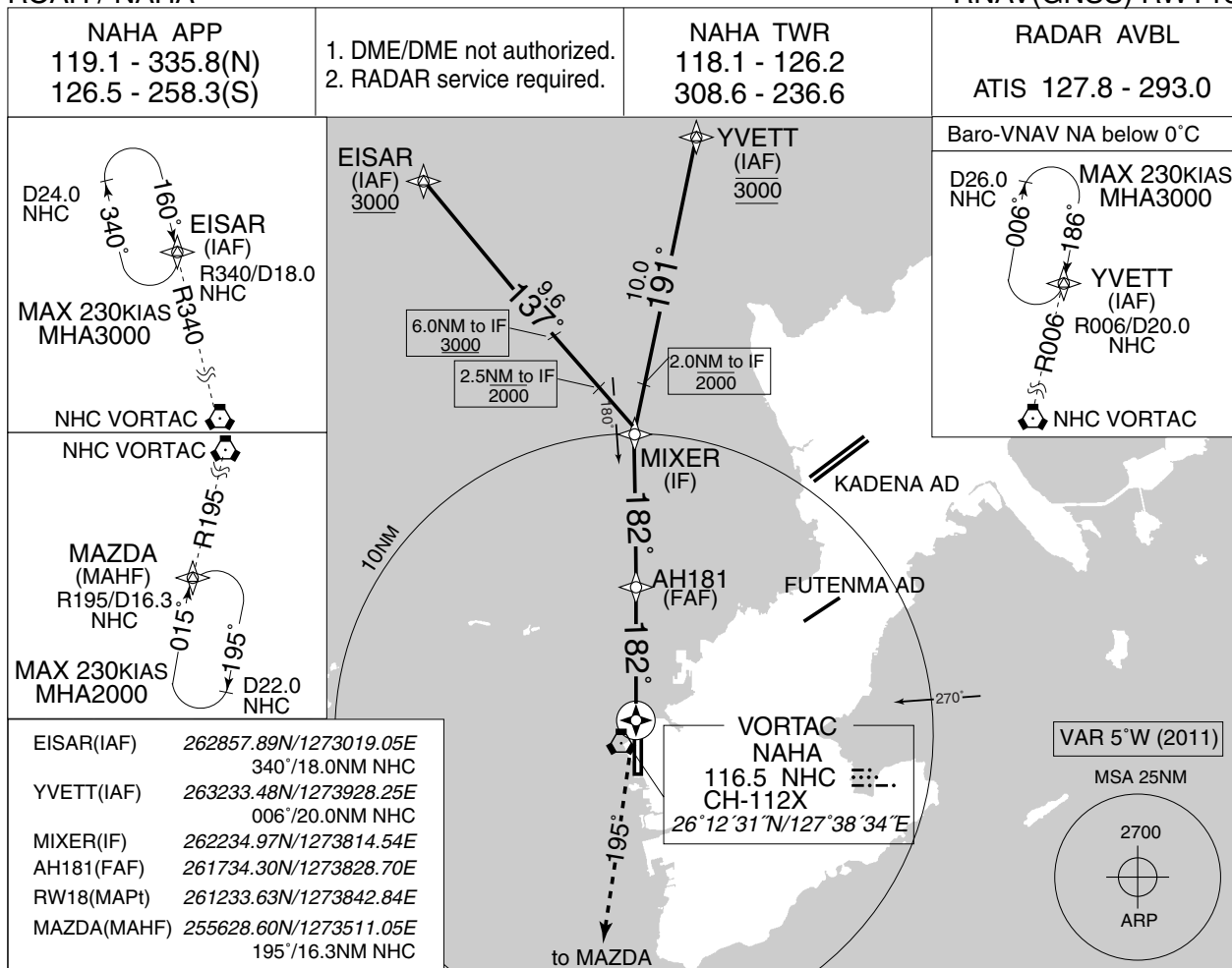
CAT	THR elev. 11		AD elev. 11	
	MDA(H)	RVR/CMV	MDA(H)	VIS
A	420 (409)	1200	500 (489)	1600
B		1300		
C		1400	2400	
D		1600		570 (559)

Circling to WEST side of RWY only.

INSTRUMENT APPROACH CHART

ROAH / NAHA

RNAV(GNSS) RWY18



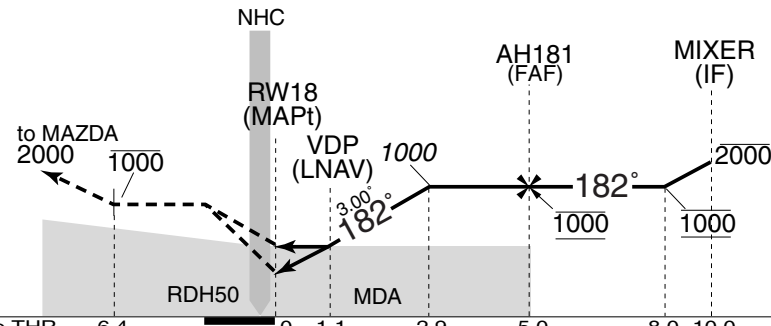
MAPt	2	2.9	NM To Next Fix
-	698	1000	ALT (3.0° APCH Path)

MISSED APPROACH

Turn right climb to 2000FT, to MAZDA on track 195° and hold.
Maintain 1000FT until 10.0NM prior to MAZDA. Contact NAHA APP.

(For using VORTAC)
Turn right climb to 2000FT via NHC R195 to MAZDA and hold.
Maintain 1000FT until NHC R195 /6.0DME. Contact NAHA APP.

Timing not authorized for defining the MAPt.

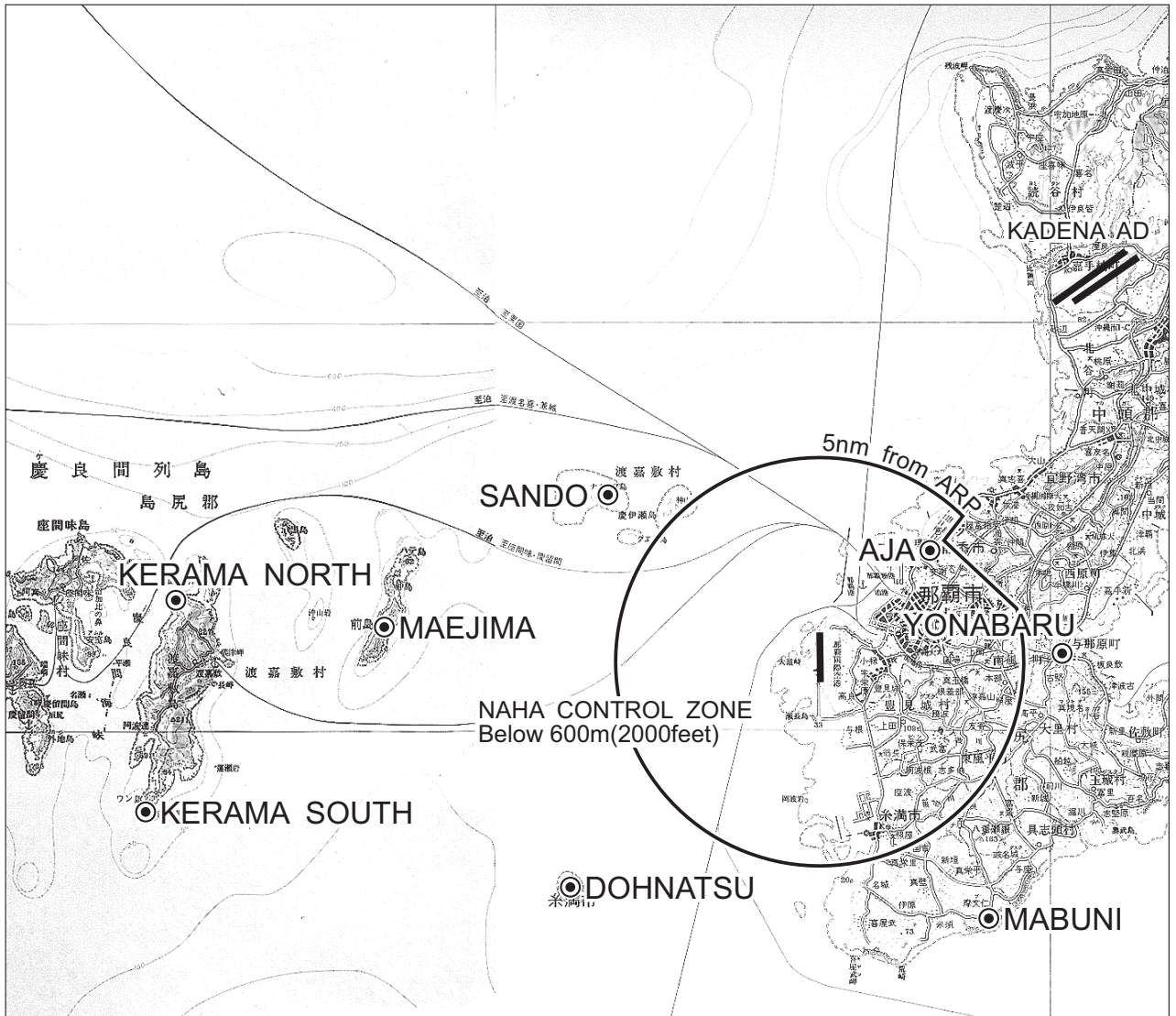


MINIMA		THR elev. 11		AD elev. 11			
CAT	LNAV/VNAV		LNAV		CIRCLING		
	DA(H)	RVR/CMV	MDA(H)	RVR/CMV	MDA(H)	VIS	
A	420 (409)	1200	420 (409)	1200	500 (489)	1600	
B		1300		1400			
C		1400		570 (559)			2400
D		1600		570 (559)			3200

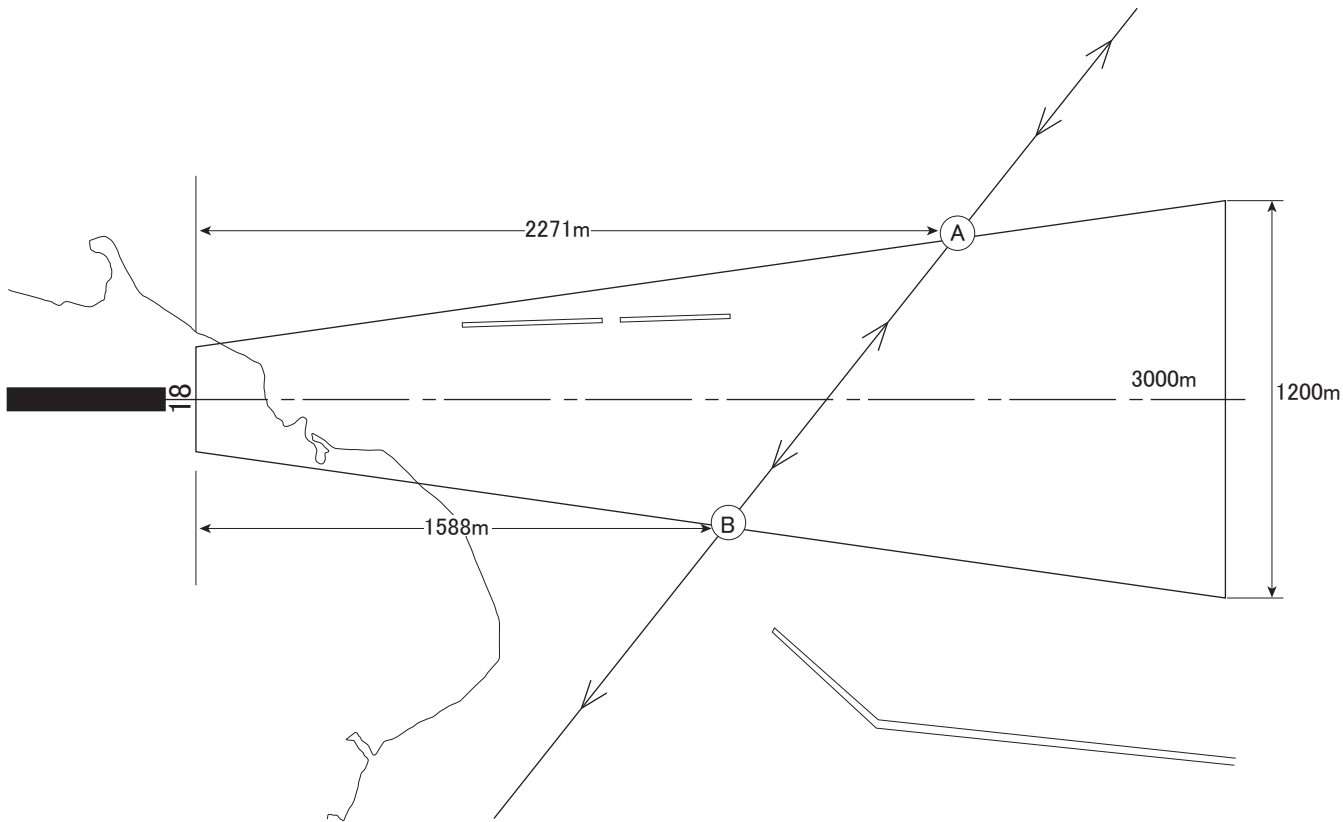
Circling to WEST side of RWY only.

ROAH / NAHA

Visual REP



Call sign	BRG / DIST from ARP	Remarks
サンド Sando	310°/ 6.7NM	ナガンヌ島 Island
前島 Maejima	277°/10.8NM	前島 Island
慶良間ノース Kerama North	277°/15.5NM	渡嘉敷島北端 North edge of island
慶良間サウス Kerama South	258°/16.5NM	渡嘉敷島南端 South edge of island
ドーナツ Dohnatsu	230°/ 8.5NM	ルカン礁 Coral reef
摩文仁 Mabuni	150°/ 7.4NM	平和祈念公園 Park
与那原 Yonabaru	090°/ 6.2NM	国道329号線与那原交叉点 Intersection
安謝 Aja	045°/ 3.5NM	国道58号線安謝橋 Bridge

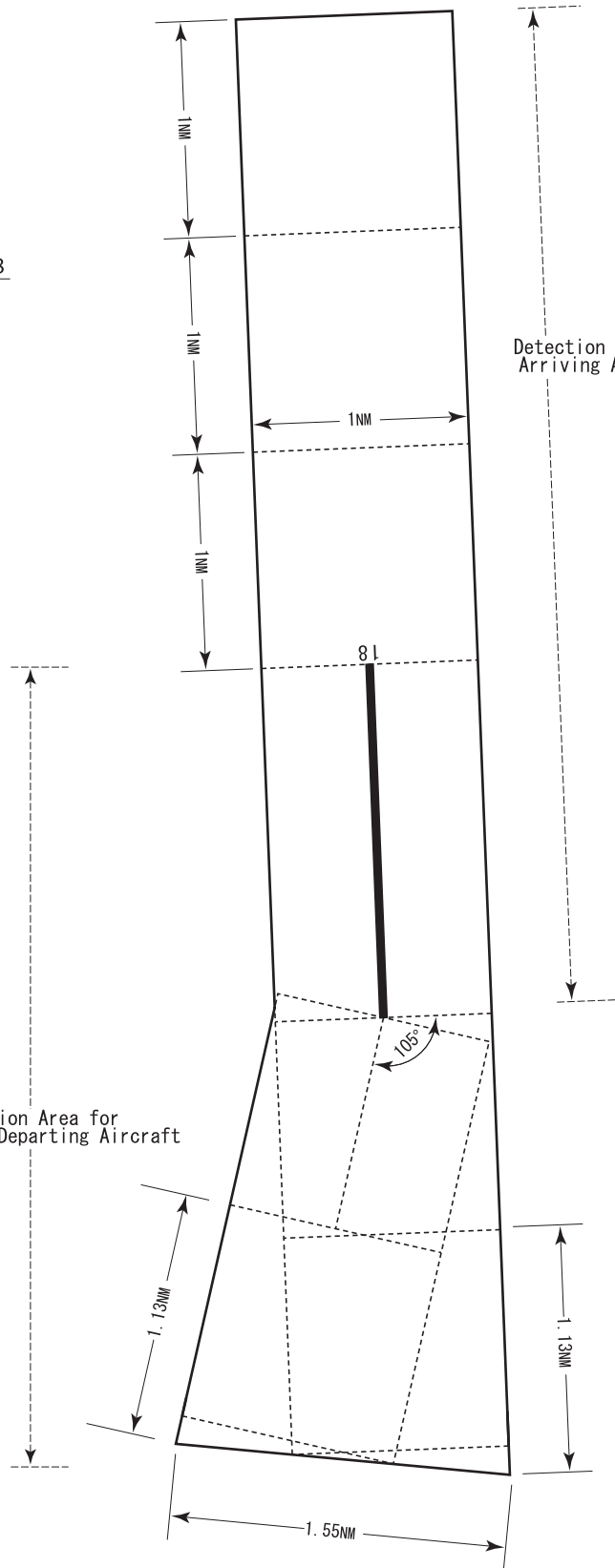


Airspace for the advisory service concerning low level wind shear

RWY 18

Detection Area for Departing Aircraft

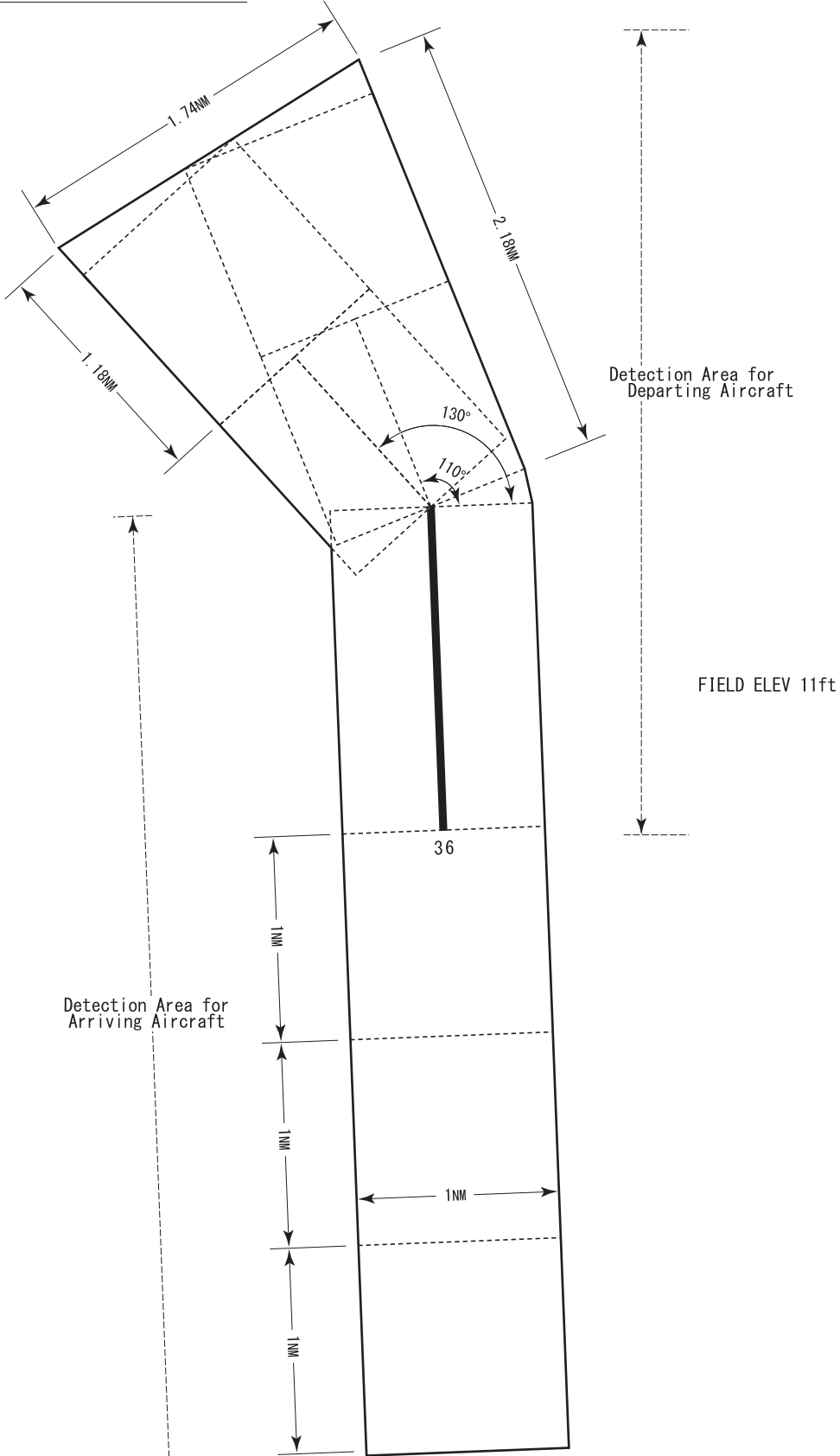
Detection Area for Arriving Aircraft



UPPER LIMIT: 1600ft above FIELD ELEV LEVEL
LOWER LIMIT: FIELD ELEV LEVEL

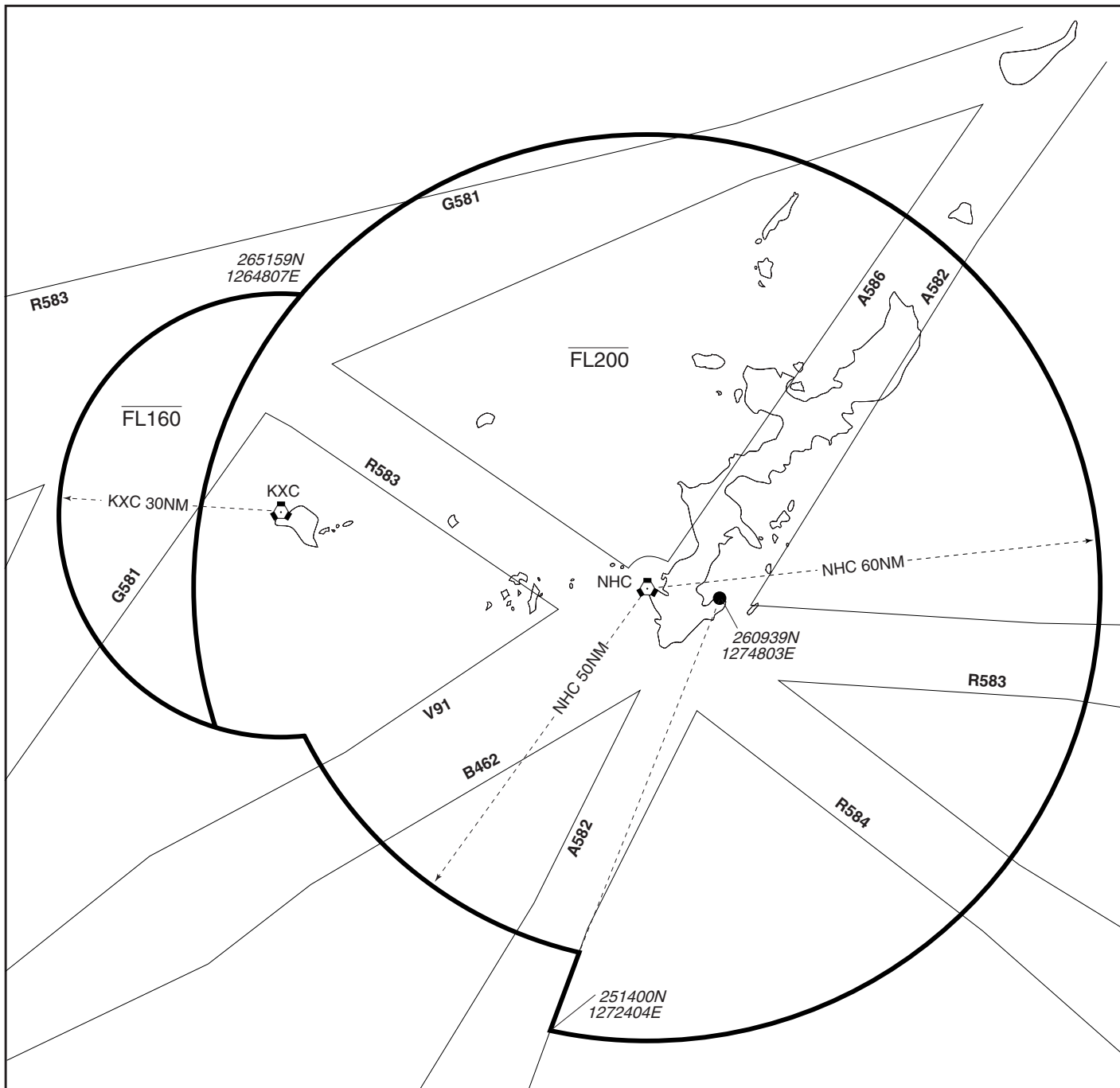
Airspace for the advisory service concerning low level wind shear

RWY 36



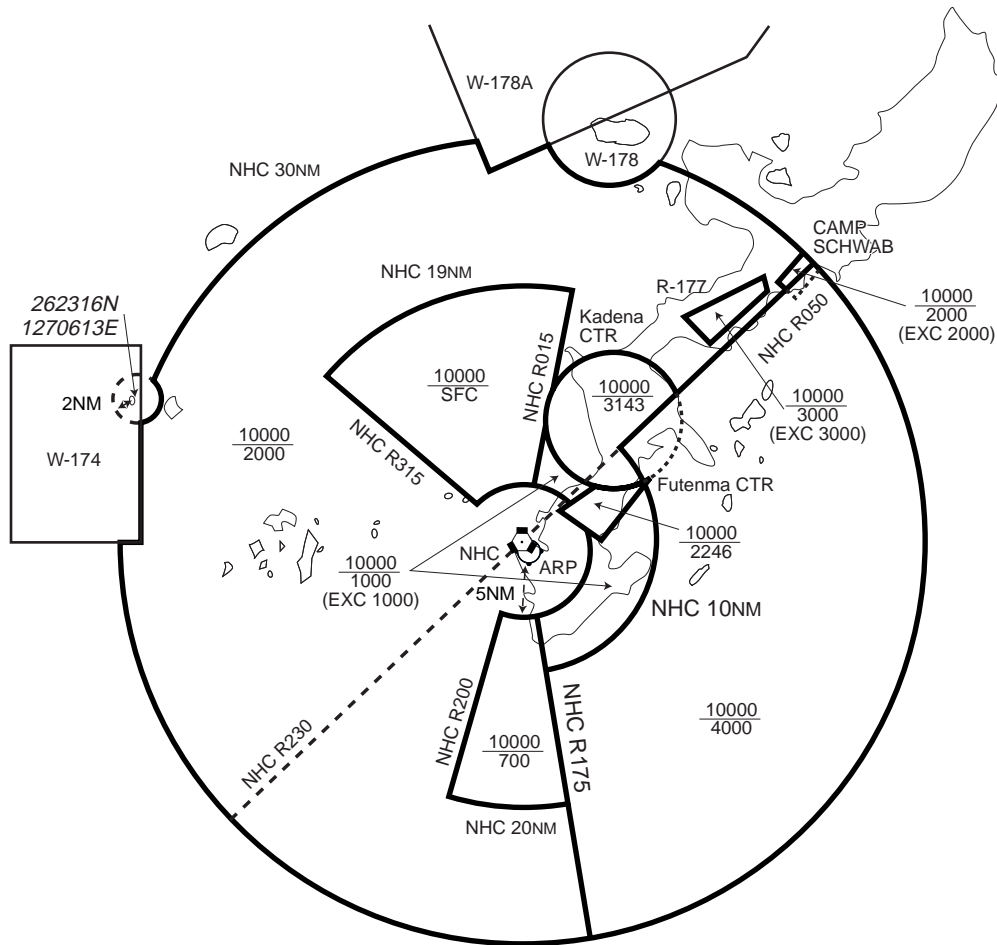
UPPER LIMIT: 1600ft above FIELD ELEV LEVEL
LOWER LIMIT: FIELD ELEV LEVEL

那霸進入管制区
Naha Approach Control Area

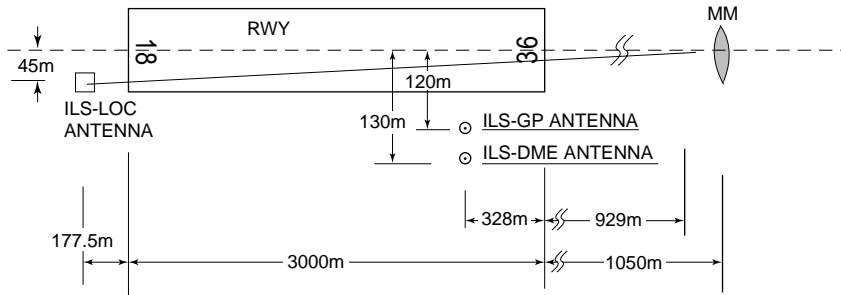


那覇特別管制区
Naha Positive Control Area(Class B)

NAME	LATERAL LIMITS	UPPER LIMIT (AMSL)	UNIT PROVIDING SERVICE	REMARKS
		LOWER LIMIT (AMSL) M(ft)		
1	2	3	4	5
那覇 Naha	下記に示される区域 The area shown below		<p>1. 那覇VORTACのR050及びR230の線の北西で飛行する航空機： Naha APP 119.1MHz/335.8MHz</p> <p>1. Aircraft operating northwest of the Naha VORTAC 050/230 radials: Naha APP 119.1MHz/335.8MHz</p> <p>2. 那覇VORTACのR050及びR230の線の南東で飛行する航空機： Naha APP 126.5MHz/258.3MHz</p> <p>2. Aircraft operating southeast of the Naha VORTAC 050/230 radials: Naha APP 126.5MHz/258.3MHz</p>	<p>当該空域を飛行しようとする航空機は、那覇アプローチに連絡し、コールサイン、現在位置、高度及び意図を通報し指示を受けること。(当該空域と重複する那覇管制圏を飛行しようとする航空機に対しては、那覇アプローチから当該管制圏内の飛行に係る指示が発出される。)</p> <p>Pilot of aircraft operating in this area shall contact Naha APP for ATC Instructions giving informations on aircraft identification, position, altitude and pilot's intentions.(Naha APP instruct about the operation in Naha CTR for pilot of aircraft operating in this area overlapping Naha CTR)</p>



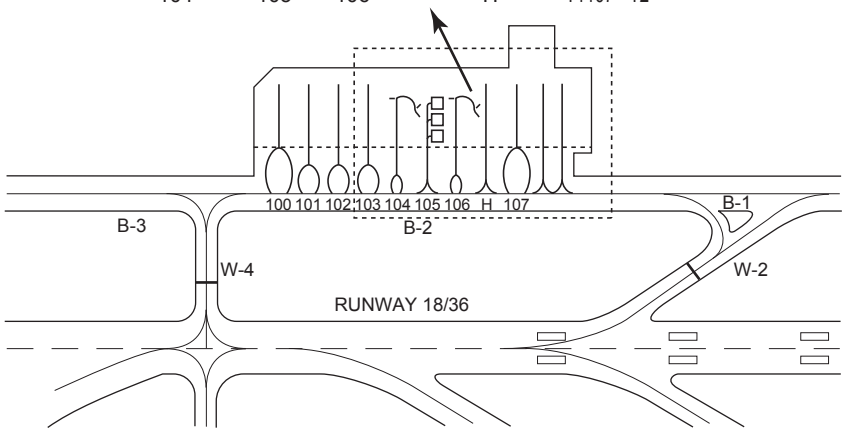
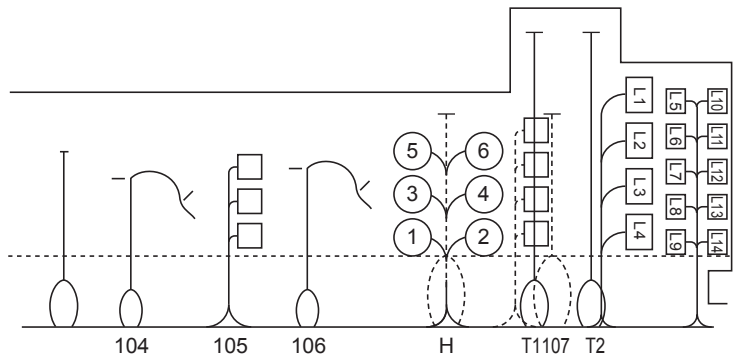
NAHA AP



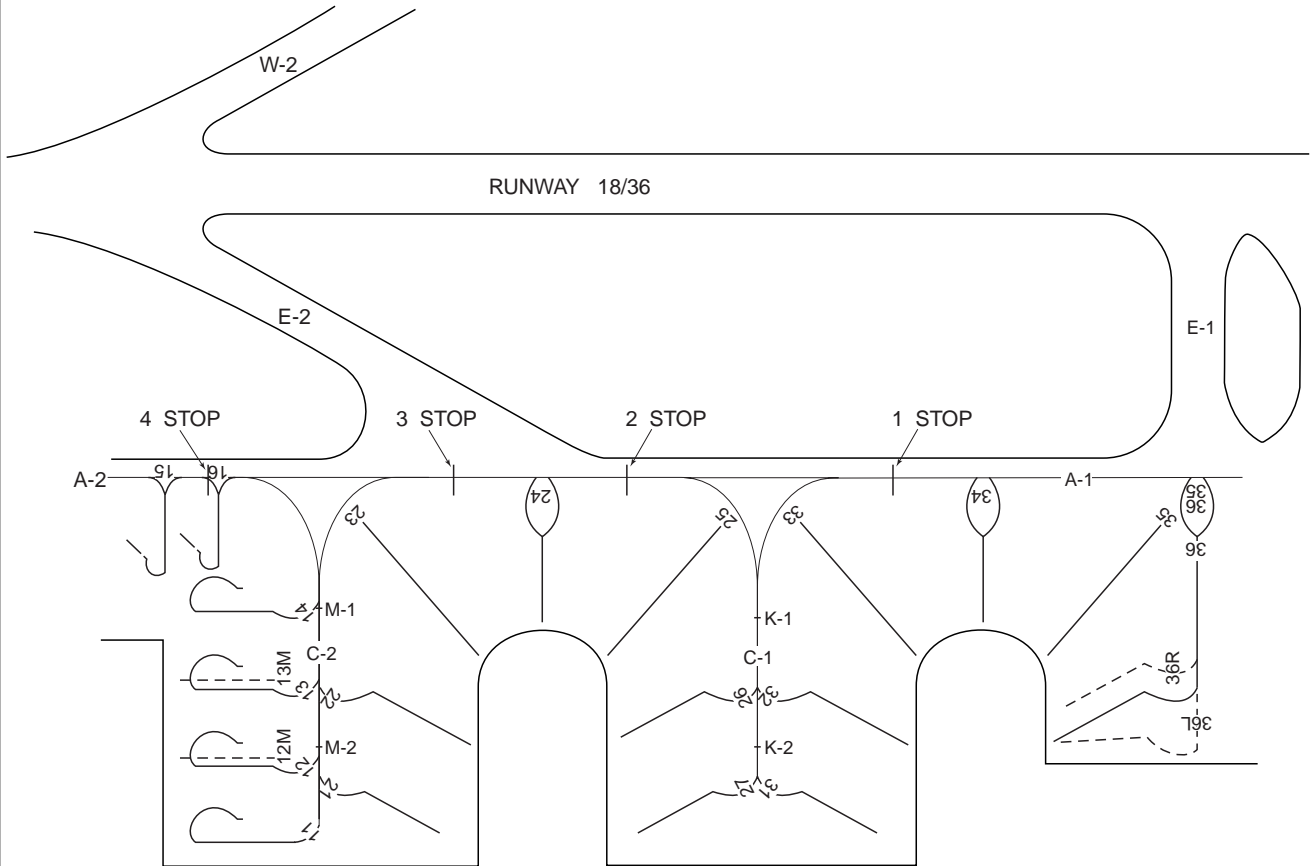
REMARKS :

- | | |
|-------------------------|--------------|
| 1. LOC OFFSET Angle | 0.63° |
| 2. LOC beam BRG (MAG) | 002° |
| 3. GP Angle | 3.0° |
| 4. HGT of ILS REF datum | 17.4m (57ft) |
| 5. ELEV of ILS-DME | 9.4m (31ft) |

MARKING AIDS and PARKING AREA



MARKING AIDs and PARKING AREA



RWY36

RWY18

