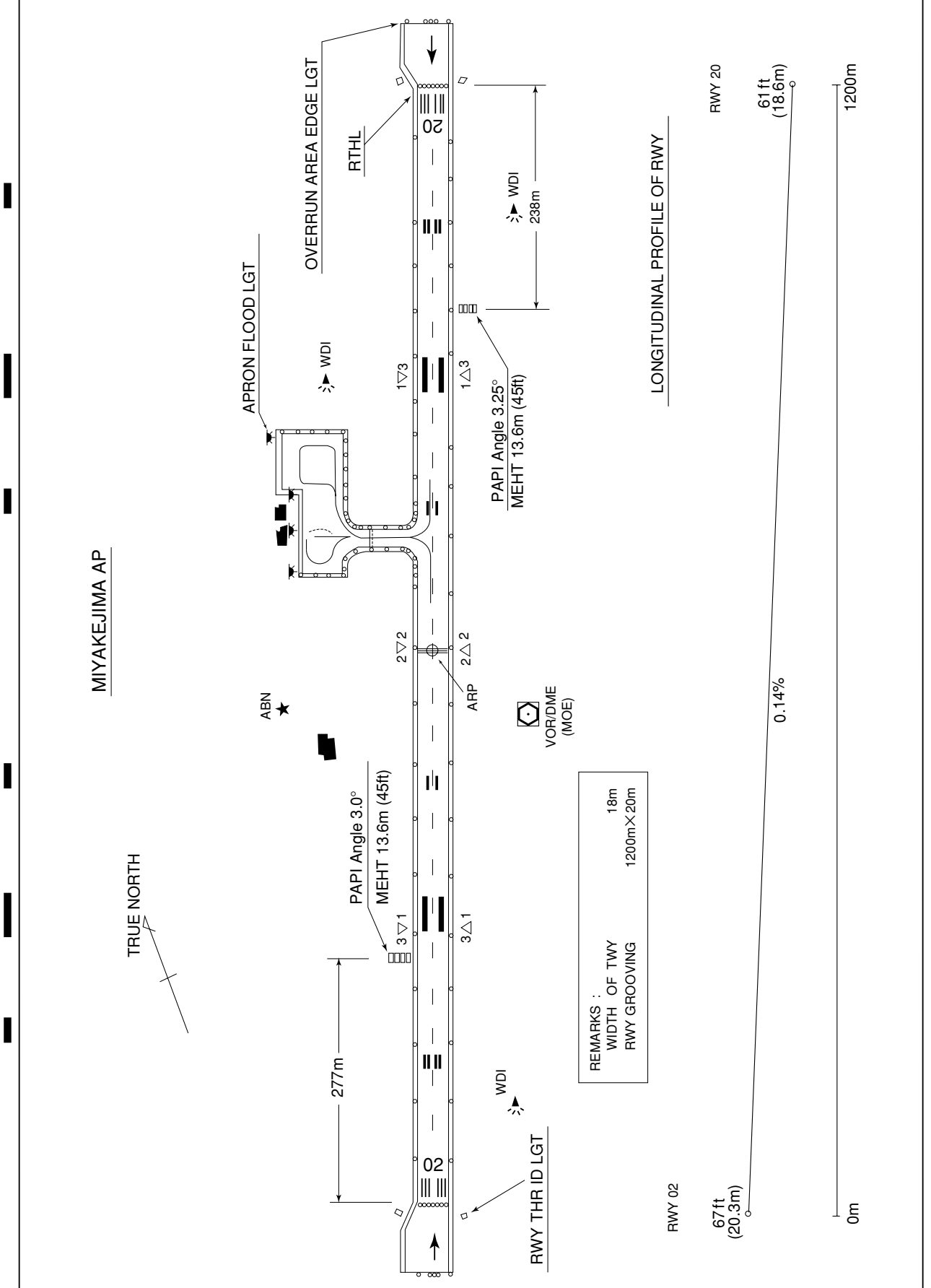


RJTQ / MIYAKEJIMA

AD CHART



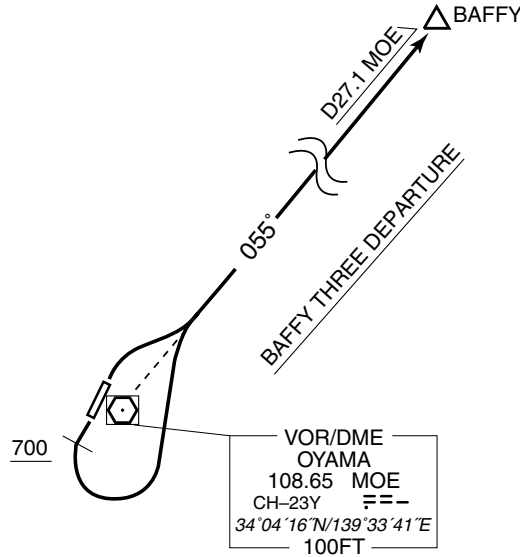
STANDARD DEPARTURE CHART -INSTRUMENT

RJTQ / MIYAKEJIMA

SID

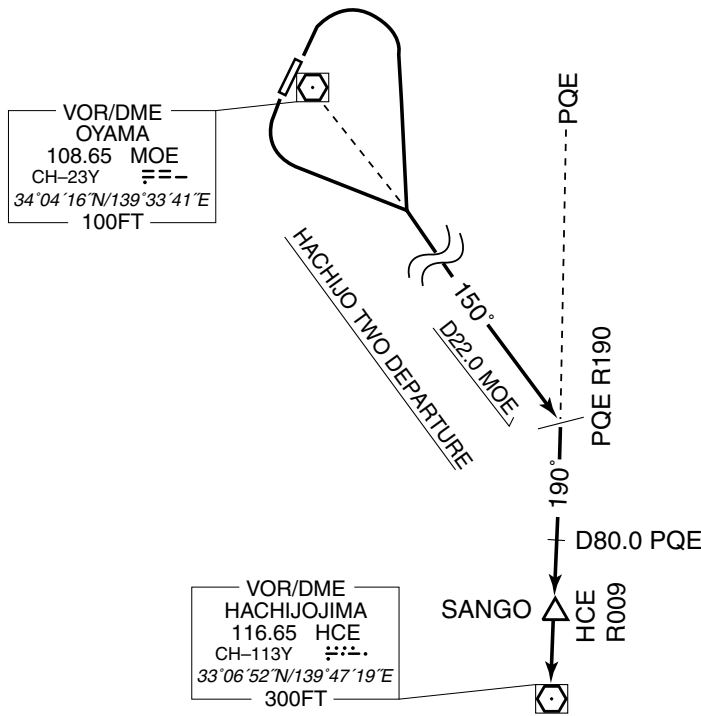
BAFFY THREE DEPARTURE

RWY02 : Turn right, ...
 RWY20 : Climb RWY HDG to 700FT or above, turn left, ...
 ...climb via MOE R055 to BAFFY.



HACHIJO TWO DEPARTURE

RWY02 : Turn right, ...
 RWY20 : Turn left, ...
 ...climb via MOE R150 to intercept and proceed via PQE R190 to 80.0DME,
 via HCE R009 to SANGO or HCE VOR/DME.



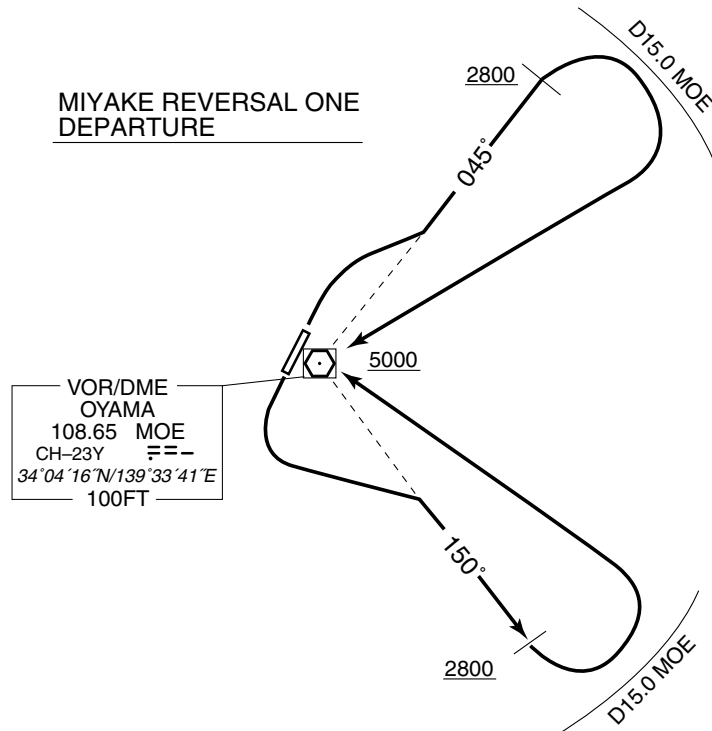
STANDARD DEPARTURE CHART -INSTRUMENT

RJTQ / MIYAKEJIMA

SID

MIYAKE REVERSAL ONE DEPARTURE

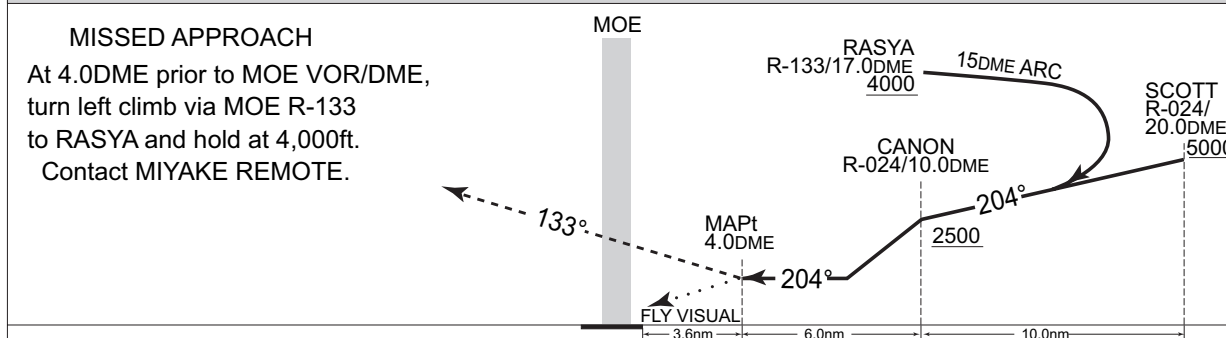
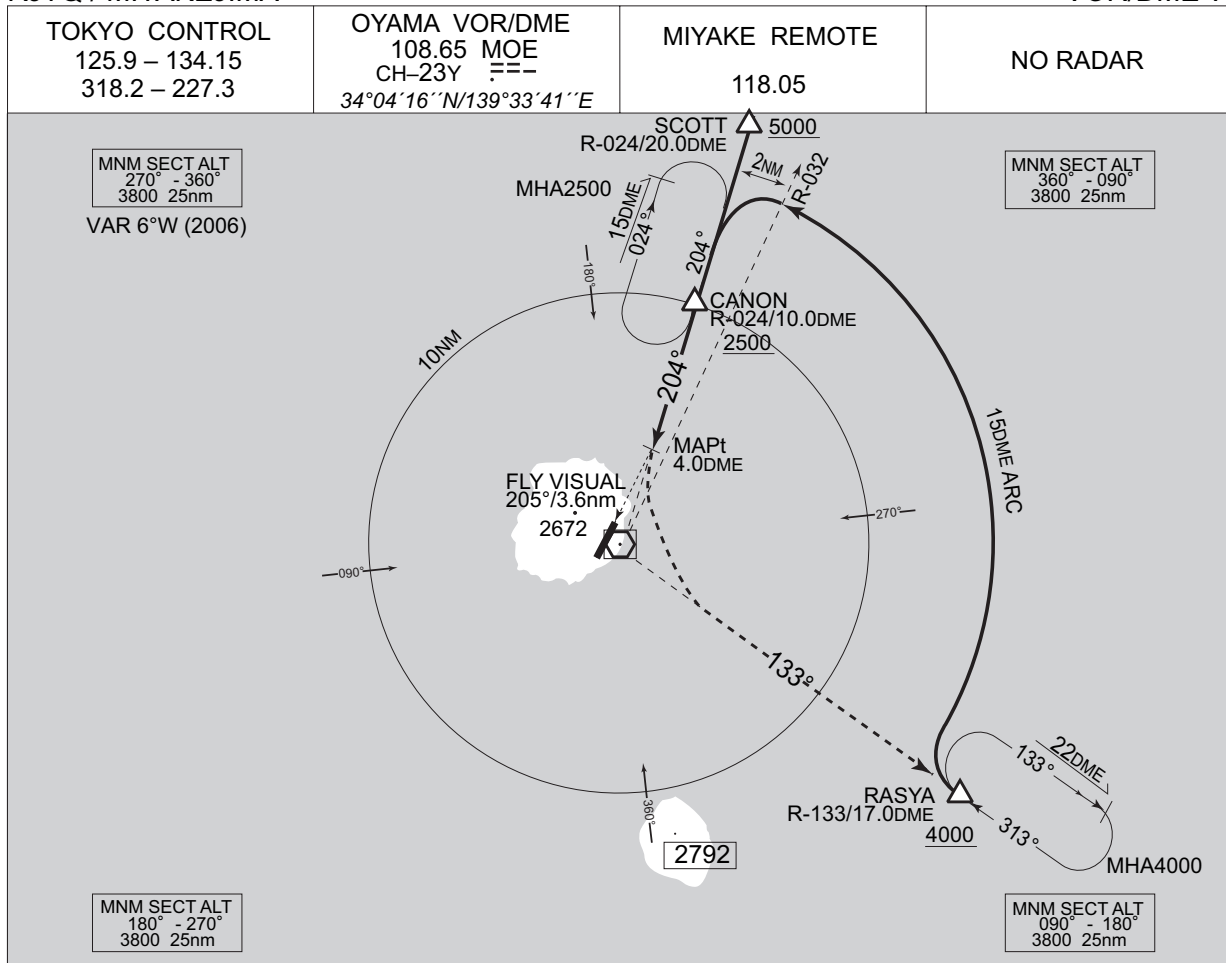
- RWY02 : Turn right climb via MOE R045 to 2800FT or above, turn right within MOE 15.0DME...
- RWY20 : Turn left climb via MOE R150 to 2800FT or above, turn left within MOE 15.0DME...
...proceed to MOE VOR/DME.
Cross MOE VOR/DME at or above 5000FT.



INSTRUMENT APPROACH CHART

RJTQ / MIYAKEJIMA

VOR/DME A



MINIMA		AD elev. 65
CAT	CIRCLING	
	MDA(H)	VIS
A	760 (695)	3200
B		
C	-	-
D		

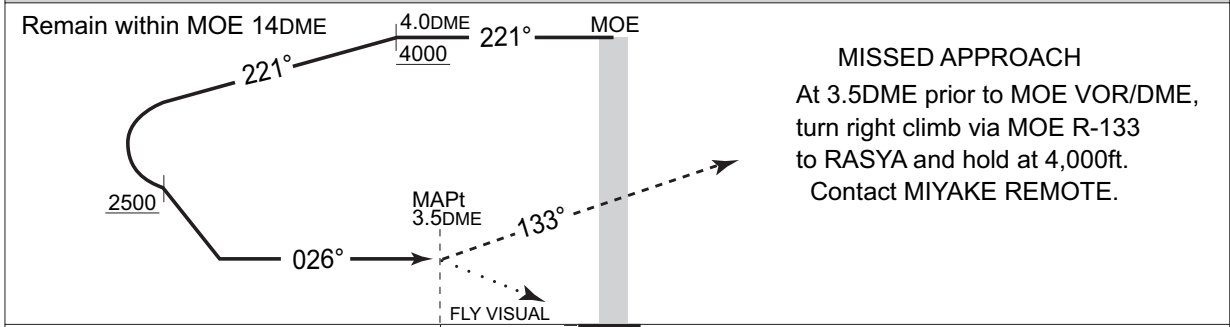
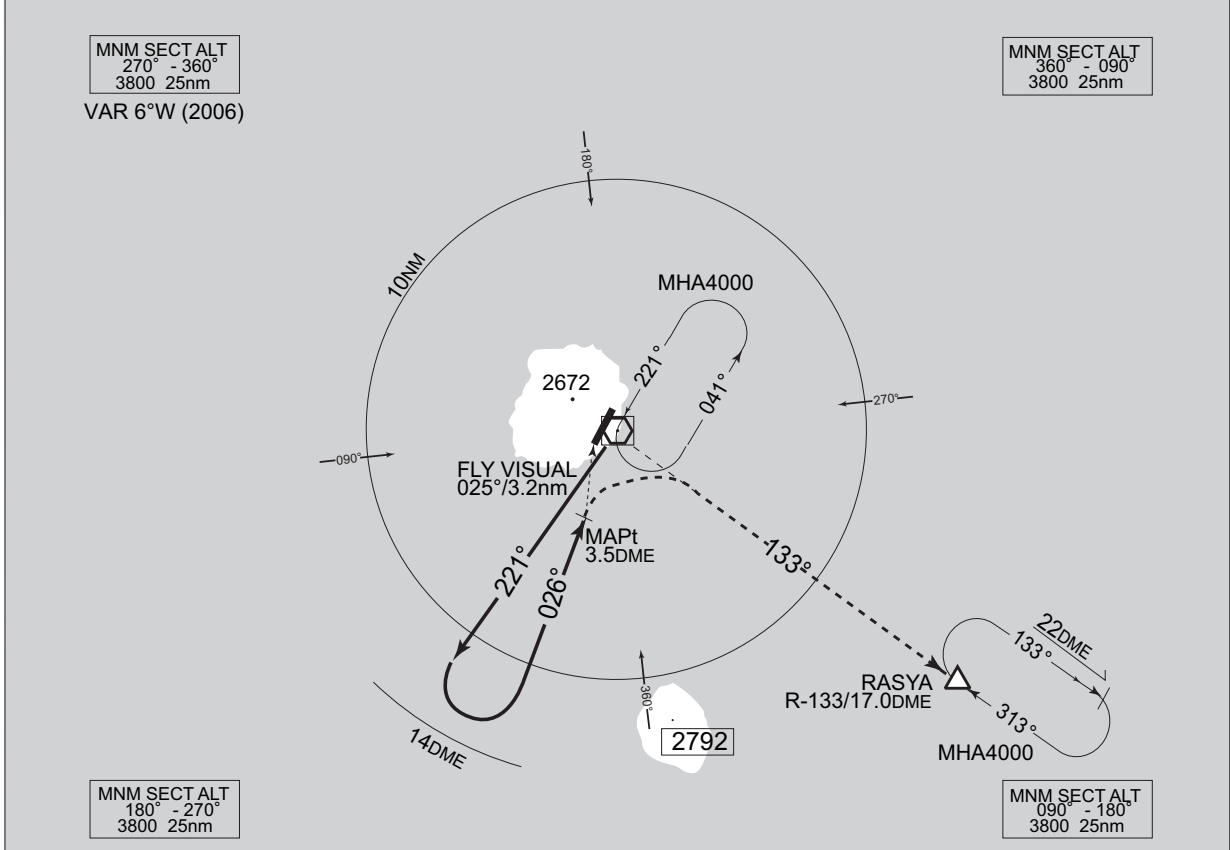
Circling to East side of RWY only.

INSTRUMENT APPROACH CHART

RJTQ / MIYAKEJIMA

VOR/DME B

<p>TOKYO CONTROL 125.9 – 134.15 318.2 – 227.3</p>	<p>OYAMA VOR/DME 108.65 MOE CH-23Y --- 34°04'16"N/139°33'41"E</p>	<p>MIYAKE REMOTE 118.05</p>	<p>NO RADAR</p>
---	---	---------------------------------	-----------------

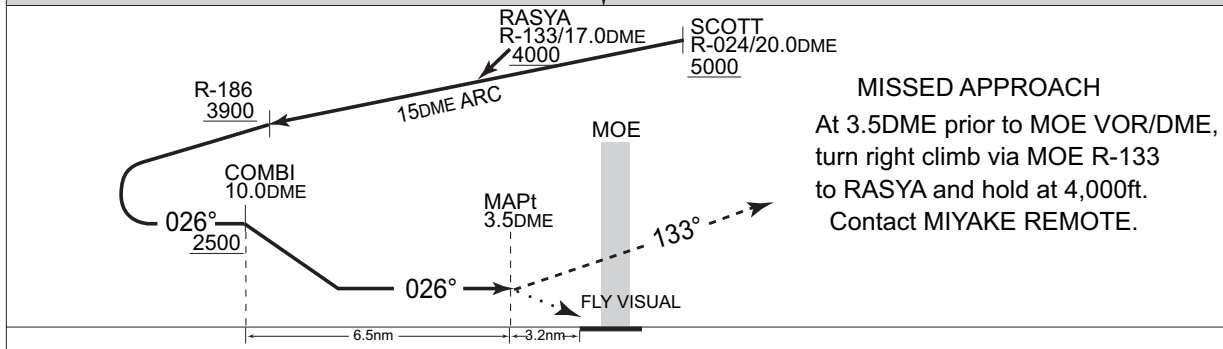
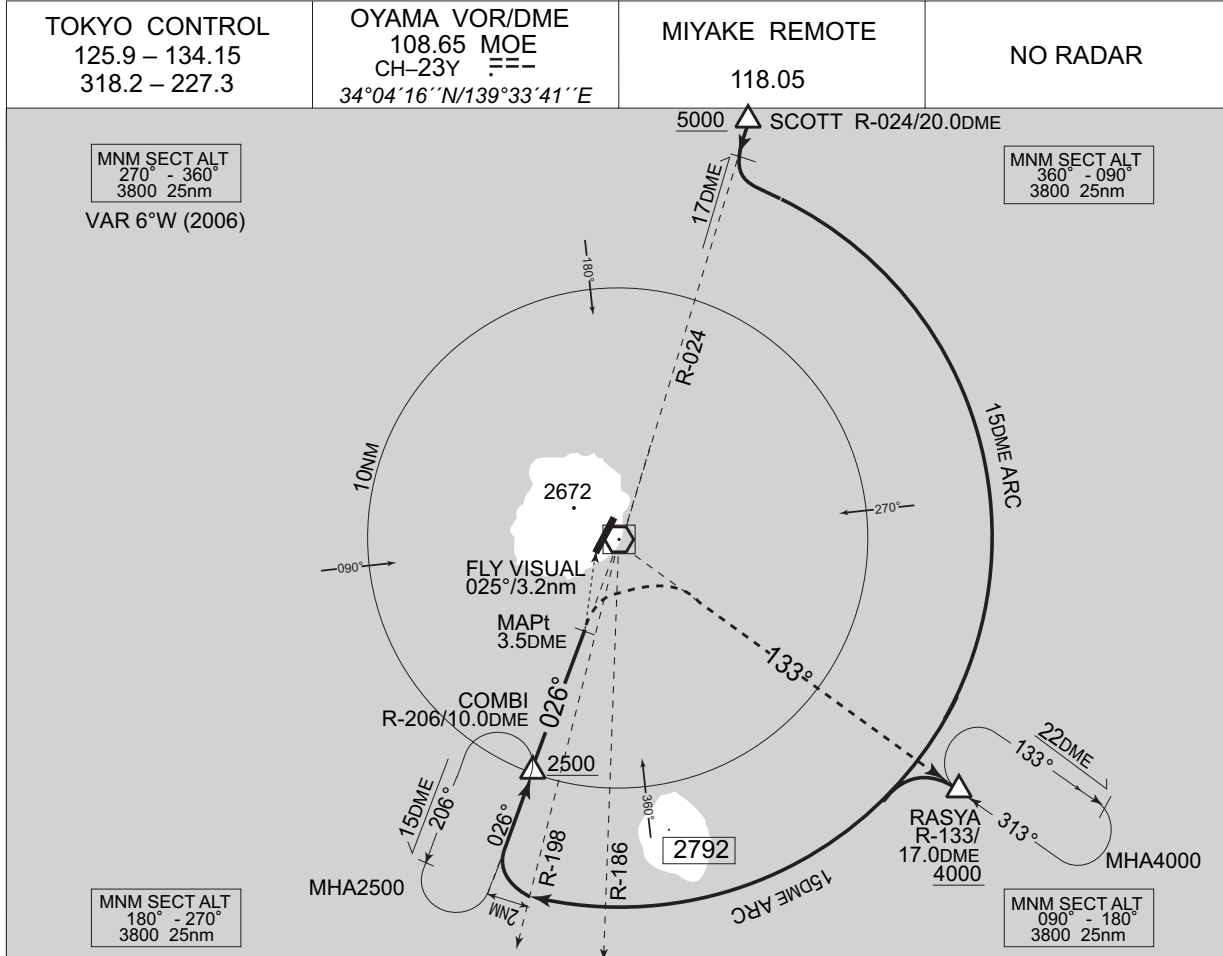


MINIMA		AD elev. 65
CAT	CIRCLING	
	MDA(H)	VIS
A	760 (695)	3200
B		
C	-	-
D		
Circling to East side of RWY only.		

INSTRUMENT APPROACH CHART

RJTQ / MIYAKEJIMA

VOR/DME C

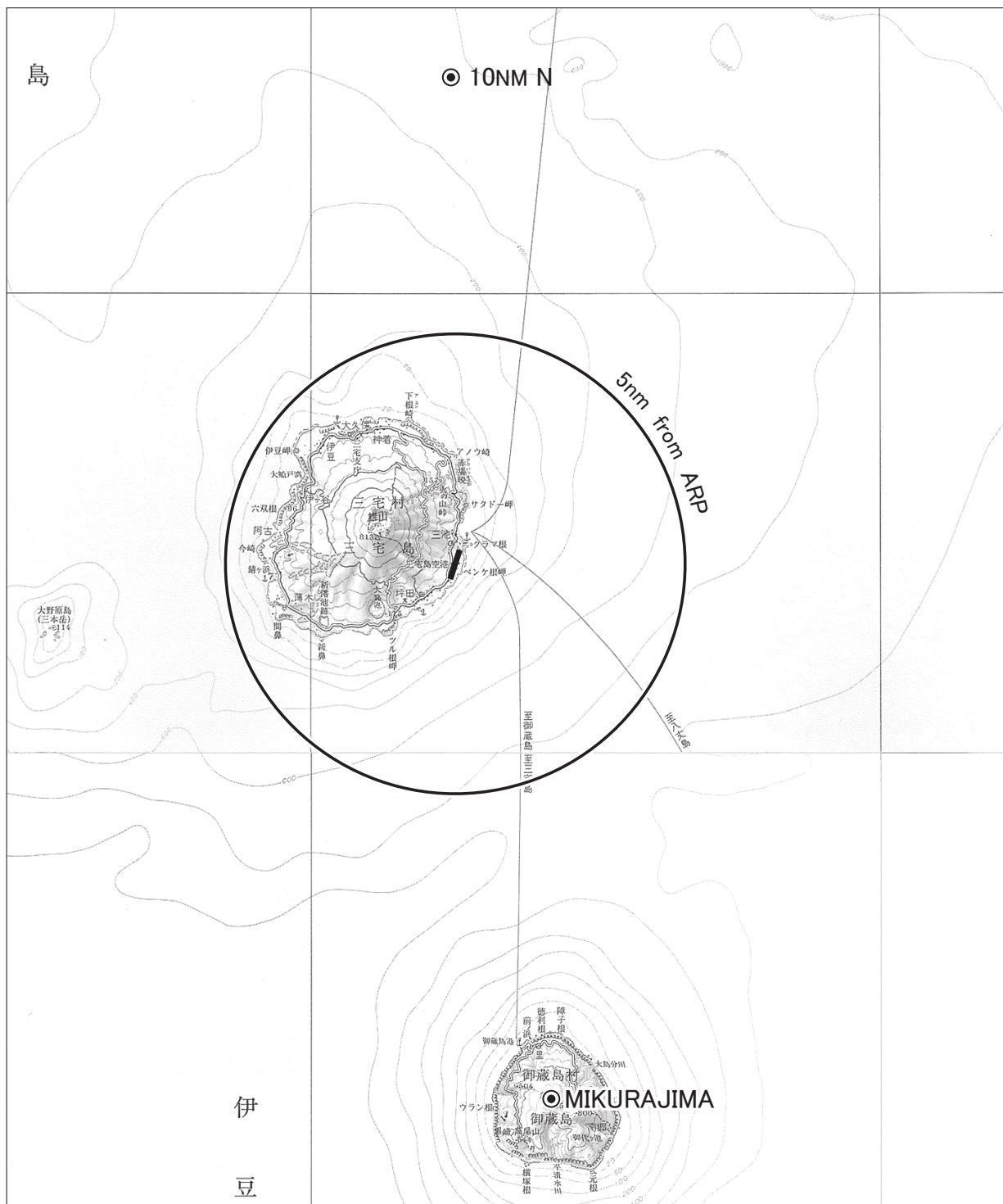


MINIMA		AD elev. 65
CAT	CIRCLING	
	MDA(H)	VIS
A	760 (695)	3200
B		
C	-	-
D		

Circling to East side of RWY only.

RJTQ / MIYAKEJIMA

Visual REP



Call sign	BRG / DIST from ARP	Remarks
御蔵島 Mikurajima	176° /11.8NM	御山 Mt. Oyama
10NM N	360° /10.0NM	海上 Over the sea

Note : In the W direction of the airport, A/G COM from Miyake Remote is blinded by Mt. Oyama (2,672ft).

RJTQ / MIYAKEJIMA

LDG CHART

