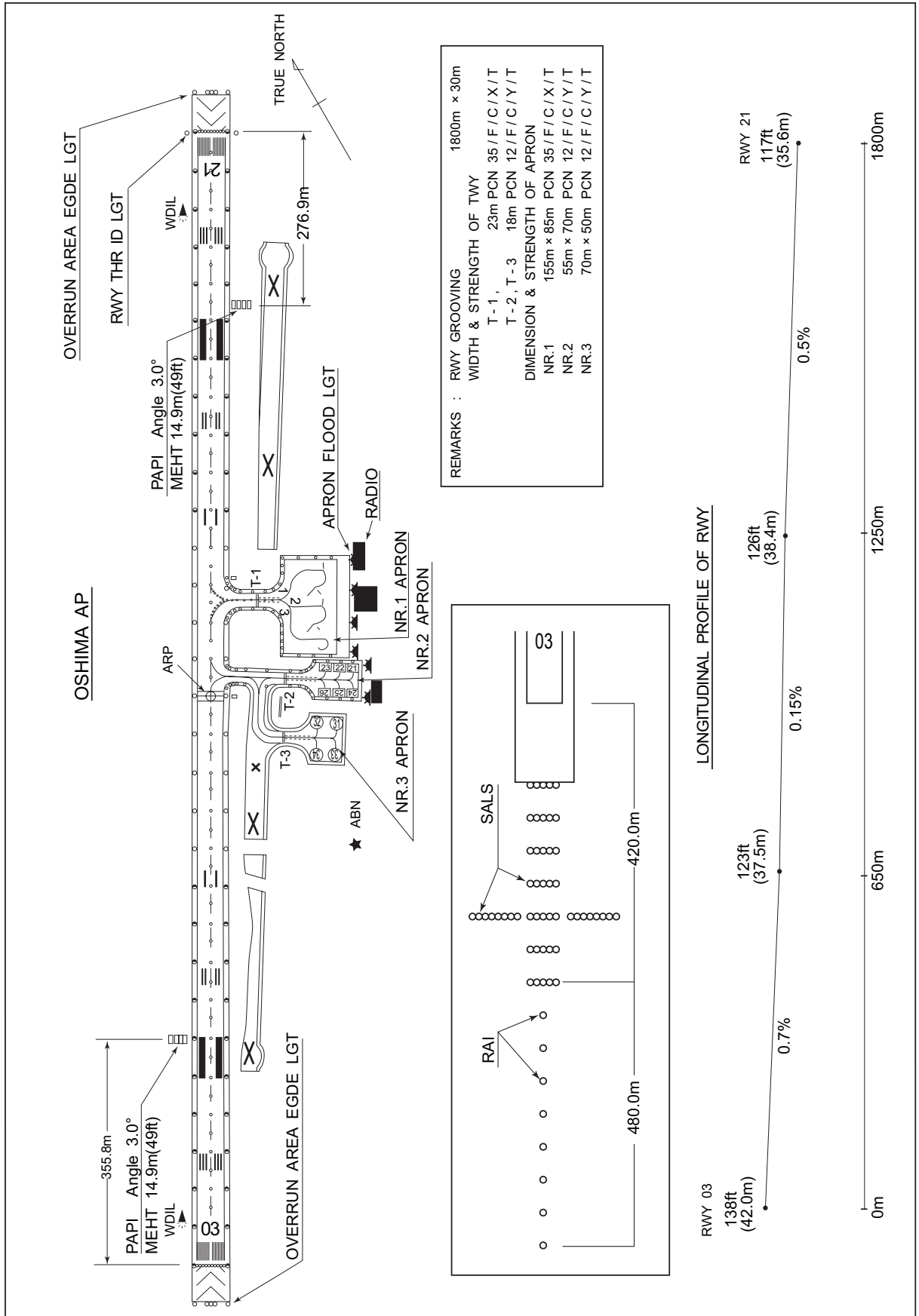


RJTO / OSHIMA

AD CHART



STANDARD DEPARTURE CHART -INSTRUMENT

RJTO / OSHIMA

SID

TATEYAMA SIX DEPARTURE

RWY03: ...

RWY21: Climb via RWY HDG until 1NM from RWY end/OSE 1.9DME, turn right,...

...Climb via OSE R-037 to intercept and proceed via PQE R-267 to PQE VOR/DME.
Cross PQE VOR/DME at assigned altitude.

Note : When take off RWY03 following climb gradient should be maintained until passing 500ft.

Speed (Knots)	60	90	120	150	180	210
Rate (Feet/Min)	300	450	600	750	900	1050

Caution : When take off RWY03, high terrain and obstruction existing in north side of airport.

HATSU THREE DEPARTURE

RWY03: ...

RWY21: Climb via RWY HDG until 1NM from RWY end/OSE 1.9DME, turn right,...

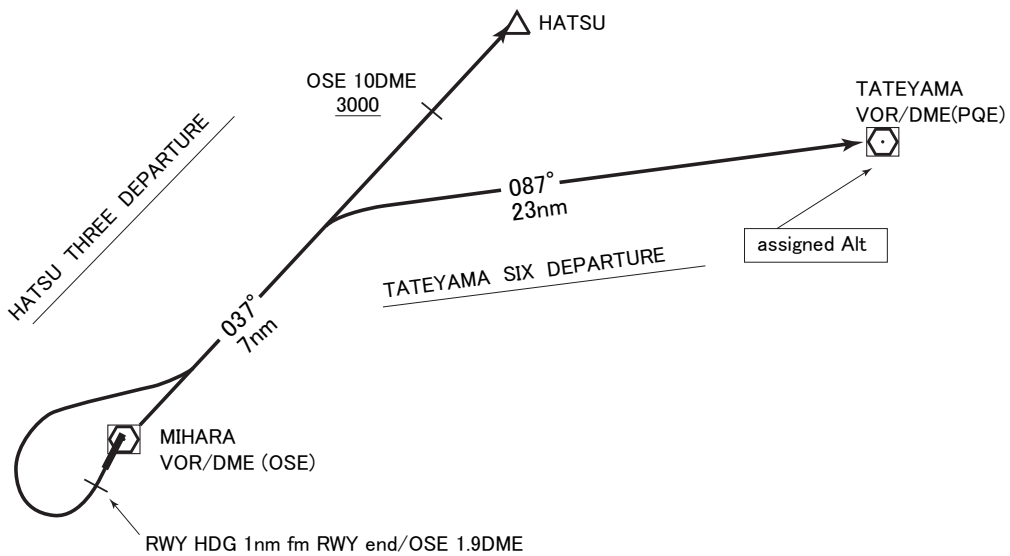
... Climb via OSE R-037 to HATSU.

Cross OSE 10DME at or above 3,000ft.

Note : When take off RWY03 following climb gradient should be maintained until passing 500ft.

Speed (Knots)	60	90	120	150	180	210
Rate (Feet/Min)	300	450	600	750	900	1050

Caution : When take off RWY03, high terrain and obstruction existing in north side of airport.



STANDARD DEPARTURE CHART -INSTRUMENT

RJTO / OSHIMA

SID

OSHIMA REVERSAL THREE DEPARTURE

RWY03: Climb via RWY HDG until 1NM from RWY end/OSE 1.1DME, turn left,...

RWY21: Turn right,...

.... Proceed to OSE VOR/DME.

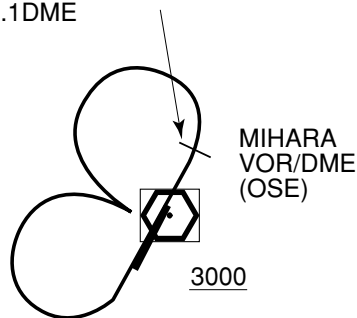
Cross OSE VOR/DME at or above 3,000FT.

Note : When take off RWY03, following climb gradient should be maintained until passing 500FT.

Speed (Knots)	60	90	120	150	180	210
Rate (Feet/Min)	300	450	600	750	900	1050

Caution : When take off RWY03, high terrain and obstruction existing in north side of airport.

RWY HDG 1NM fm RWY end
 /OSE 1.1DME



STANDARD DEPARTURE CHART -INSTRUMENT

RJTO / OSHIMA

SID

ITTOH TWO DEPARTURE

RWY03: Turn left,...

RWY21: Turn right,...

.... Climb via OSE R268 to ITTOH.

Cross ITTOH at or above 6000FT.

Note : When take off RWY03 following climb gradient should be maintained until 400FT.

Speed (Knots)	60	90	120	150	180	210
Rate (Feet/Min)	300	450	600	750	900	1050

Caution : When take off RWY03, high terrain and obstruction existing in north side of airport.

NIIJIMA ONE DEPARTURE

RWY03: Turn left,...

RWY21: Turn right,...

.... Climb via OSE R232 to 8DME, then turn left via NJC R004 to NJC VORTAC.

Cross OSE R232/8DME at or above 3000FT.

Note : When take off RWY03, following climb gradient should be maintained until passing 500FT.

Speed (Knots)	60	90	120	150	180	210
Rate (Feet/Min)	300	450	600	750	900	1050

Caution : When take off RWY03, high terrain and obstruction existing in north side of airport.

EBINE TRANSITION

From over NJC VORTAC, proceed via NJC R161 to EBINE.

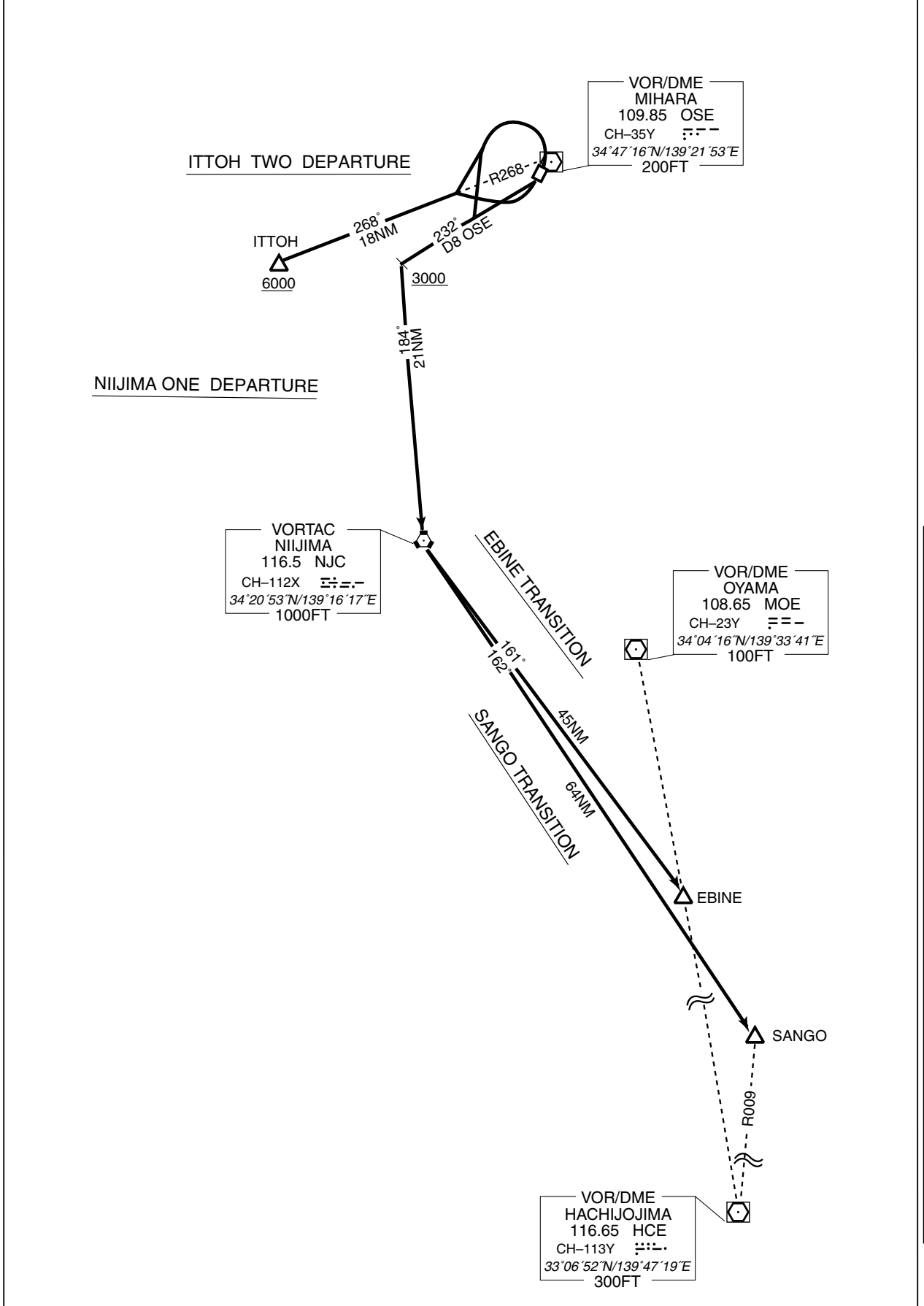
SANGO TRANSITION

From over NJC VORTAC, proceed via NJC R162 to SANGO.

STANDARD DEPARTURE CHART -INSTRUMENT

RJTO / OSHIMA

SID

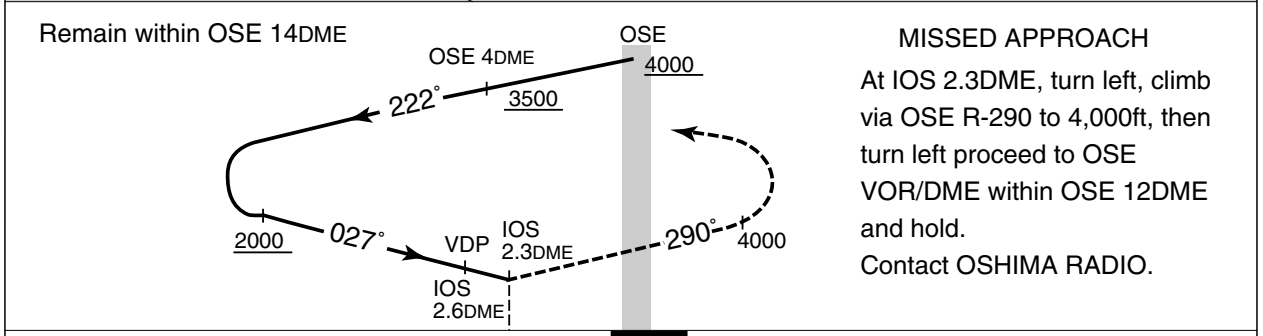
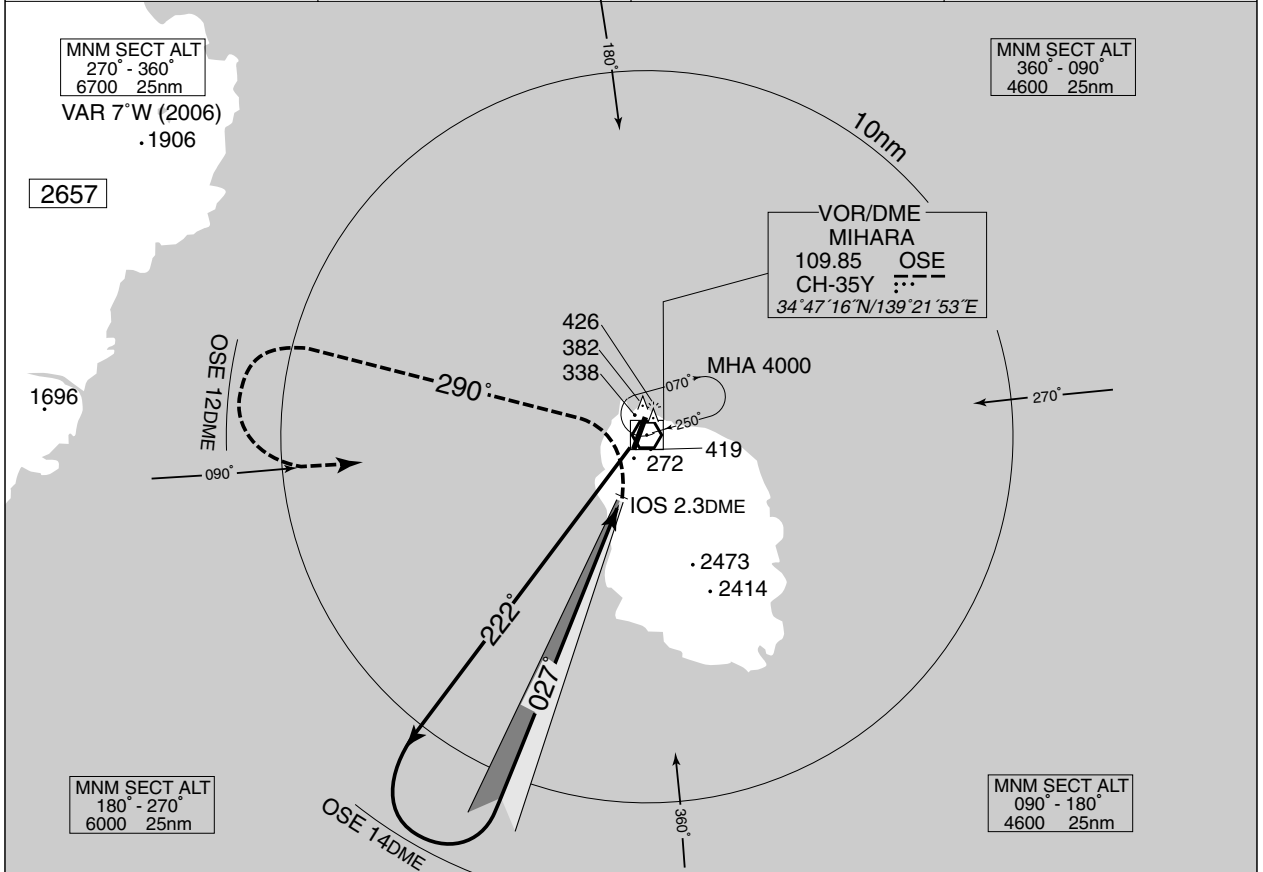


INSTRUMENT APPROACH CHART

RJTO / OSHIMA

VOR/DME/LOC RWY03

TOKYO CONTROL 133.7 – 133.35 309.4 – 312.0	LOC 109.35 IOS --- LOC-DME CH-30Y	OSHIMA RADIO 118.6 - 126.2	NO RADAR
--	---	-------------------------------	----------



MINIMA	THR elev. 138	AD elev. 124		
CAT			CIRCLING	
	MDA(H)	CMV	MDA(H)	VIS
A	640 (516)	1000	740 (616)	1600
B		1200		2400
C		1600		3200
D				

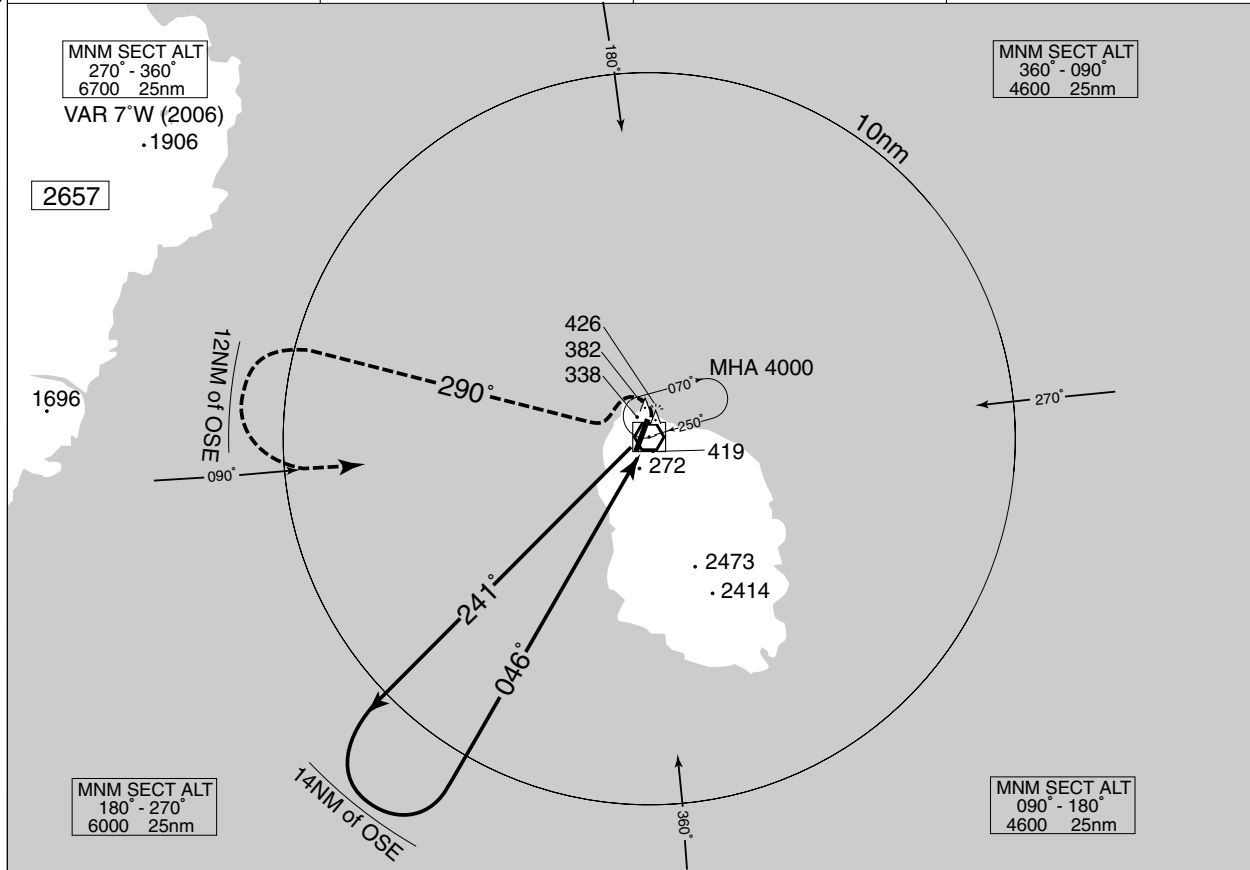
Circling to West side of RWY only.

INSTRUMENT APPROACH CHART

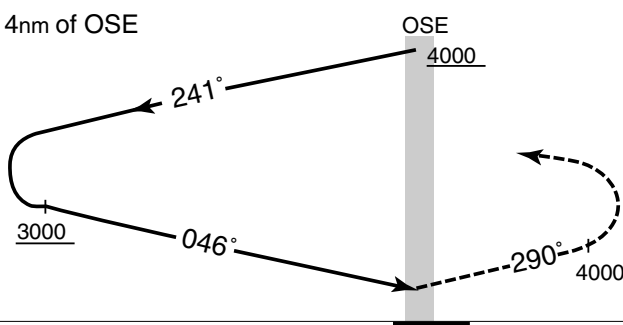
RJTO / OSHIMA

VOR A

TOKYO CONTROL 133.7 – 133.35 309.4 – 312.0	MIHARA VOR/DME 109.85 OSE $\overline{\text{---}}$ $34^{\circ}47'16"N/139^{\circ}21'53"E$	OSHIMA RADIO 118.6 - 126.2	NO RADAR
--	--	-------------------------------	----------



Remain within 14nm of OSE



MISSED APPROACH
At OSE VOR, turn left, climb via OSE R-290 to 4,000ft, then turn left proceed to OSE VOR within 12nm of OSE VOR and hold. Contact OSHIMA RADIO.

MINIMA		AD elev. 124
CAT	CIRCLING	
	MDA(H)	VIS
A	1160 (1036)	1600
B		2400
C		3200
D		

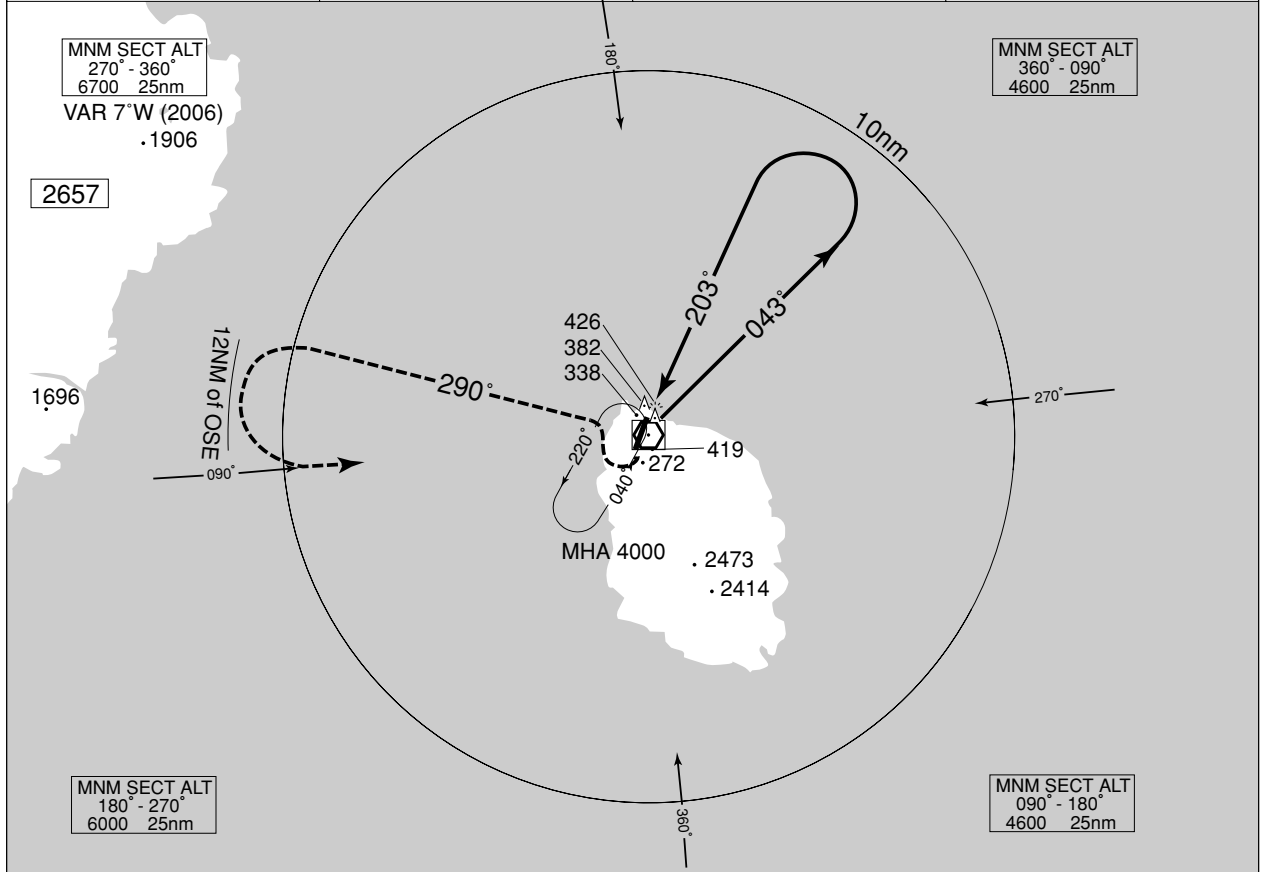
Circling to West side of RWY only.

INSTRUMENT APPROACH CHART

RJTO / OSHIMA

VOR B

<p>TOKYO CONTROL 133.7 – 133.35 309.4 – 312.0</p>	<p>MIHARA VOR/DME 109.85 OSE 777 34°47'15.87"N/139°21'53.46"E</p>	<p>OSHIMA RADIO 118.6 - 126.2</p>	<p>NO RADAR</p>
---	---	--	-----------------



MISSED APPROACH

At OSE VOR, turn right, climb via OSE R-290 to 4000', then turn left proceed to OSE VOR within 12nm of OSE VOR and hold. Contact OSHIMA RADIO.

OSE

4000

Remain within 10nm of OSE

043°

203°

2300

290°

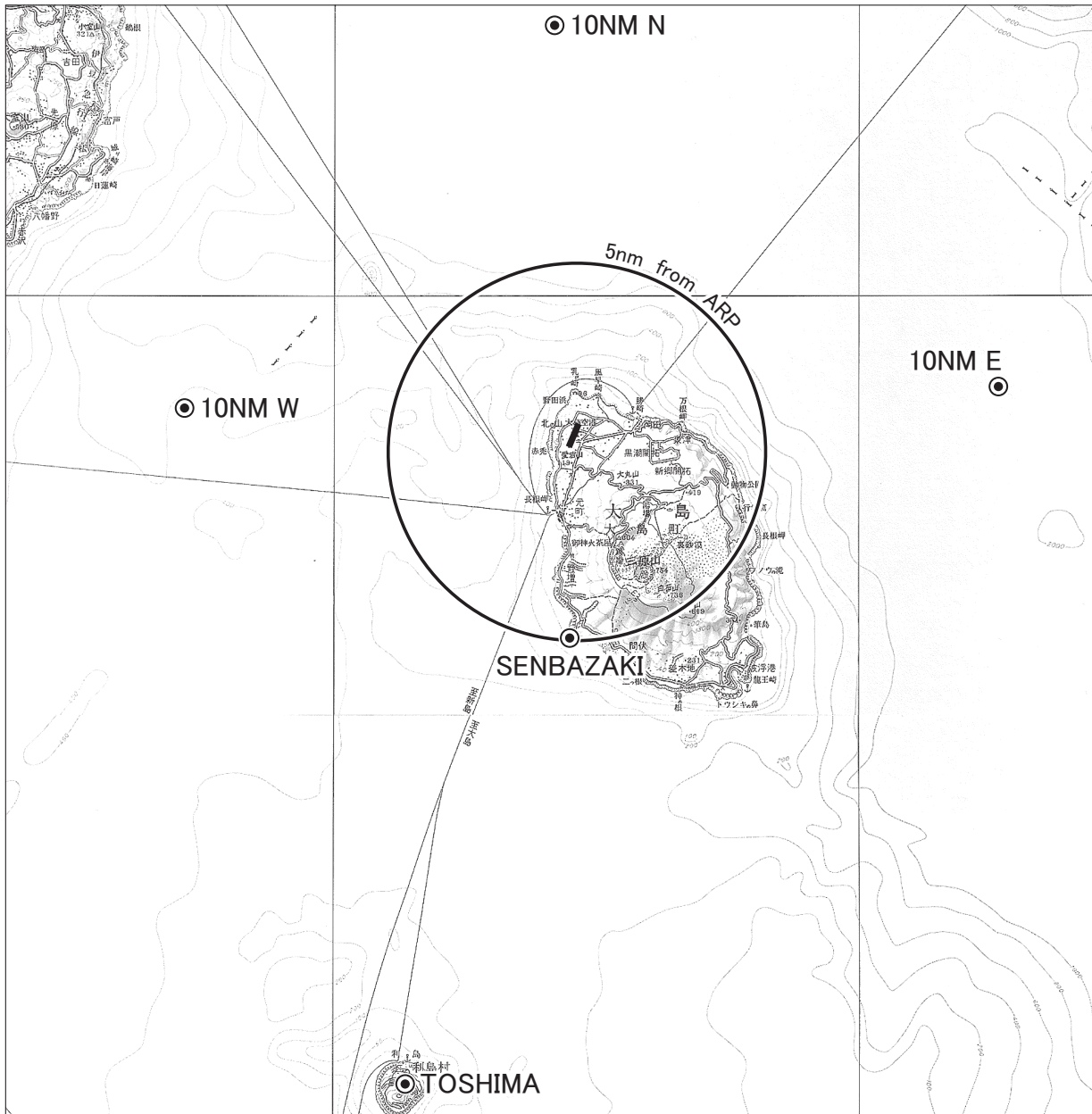
4000

<p>MINIMA</p>		<p>AD elev. 124</p>
<p>CAT</p>	<p>CIRCLING</p>	
<p>A</p>	<p>MDA(H)</p>	<p>VIS</p>
<p>B</p>	<p>1000 (876)</p>	<p>1600</p>
<p>C</p>	<p>1000 (876)</p>	<p>2400</p>
<p>D</p>	<p>1000 (876)</p>	<p>3200</p>

Circling to West side of RWY only.

RJTO / OSHIMA

Visual REP

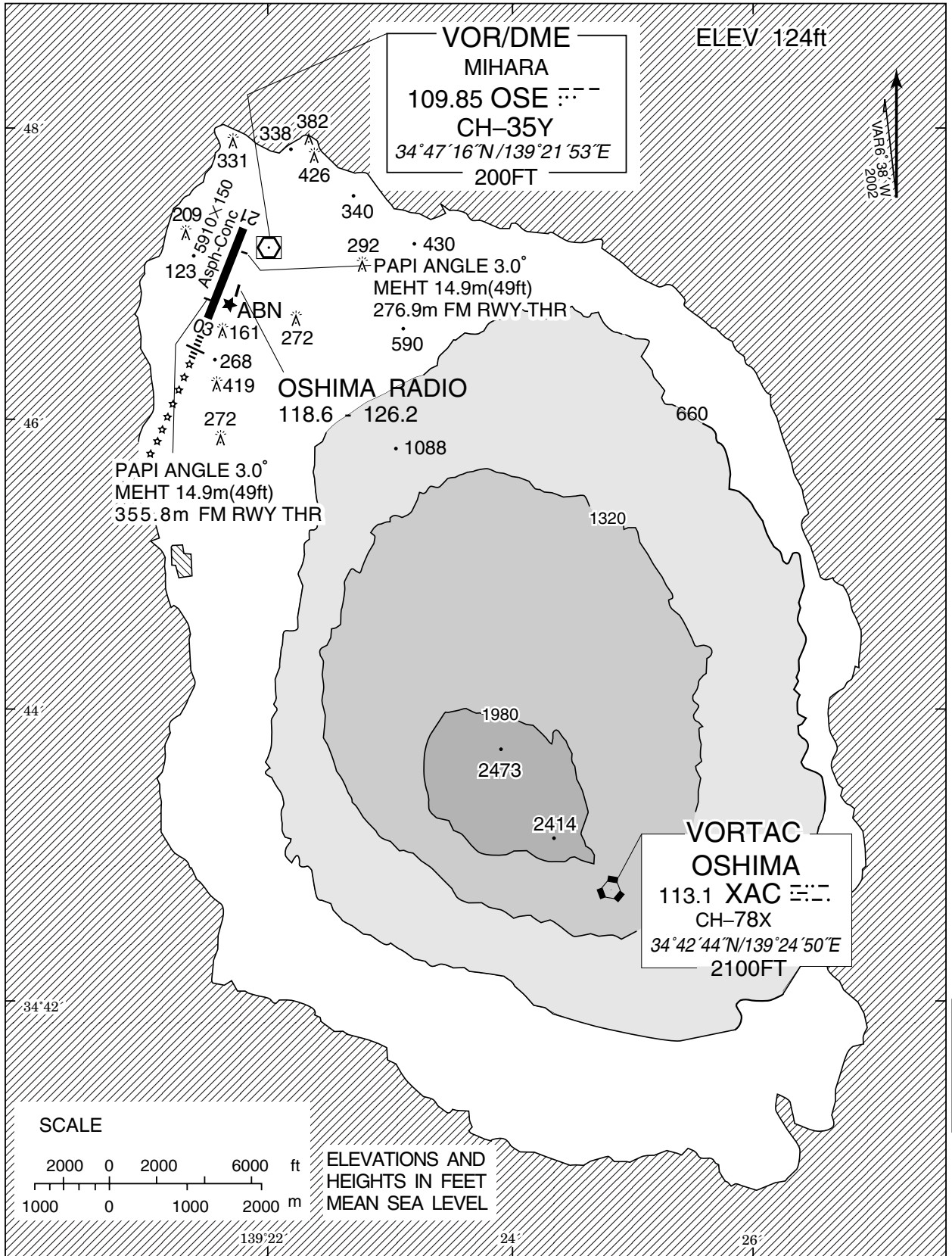


Call sign	BRG / DIST from ARP	Remarks
千波崎 Senbazaki	187° / 4.8NM	岬 Cape
利島 Toshima	202° /15.7NM	八角形の舗装面 Octagonal pavement
10NM N	360° /10.0NM	海上 Over the sea
10NM E	090° /10.0NM	海上 Over the sea
10NM W	270° /10.0NM	海上 Over the sea

NOTE: In the SE direction of the airport, A/G COM from Oshima Radio is blinded by Mt. Mihara (2,487ft)

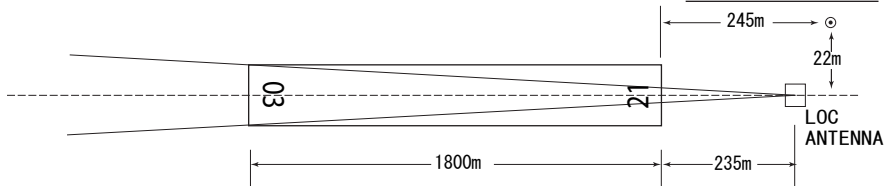
RJTO / OSHIMA

LDG CHART



OSHIMA AIRPORT

LOC-DME ANTENNA



- REMARKS :
- | | |
|-----------------------|--------------|
| 1. LOC Beam BRG (MAG) | 027° |
| 2. ELEV of ILS-DME | 5.3m (17 ft) |

