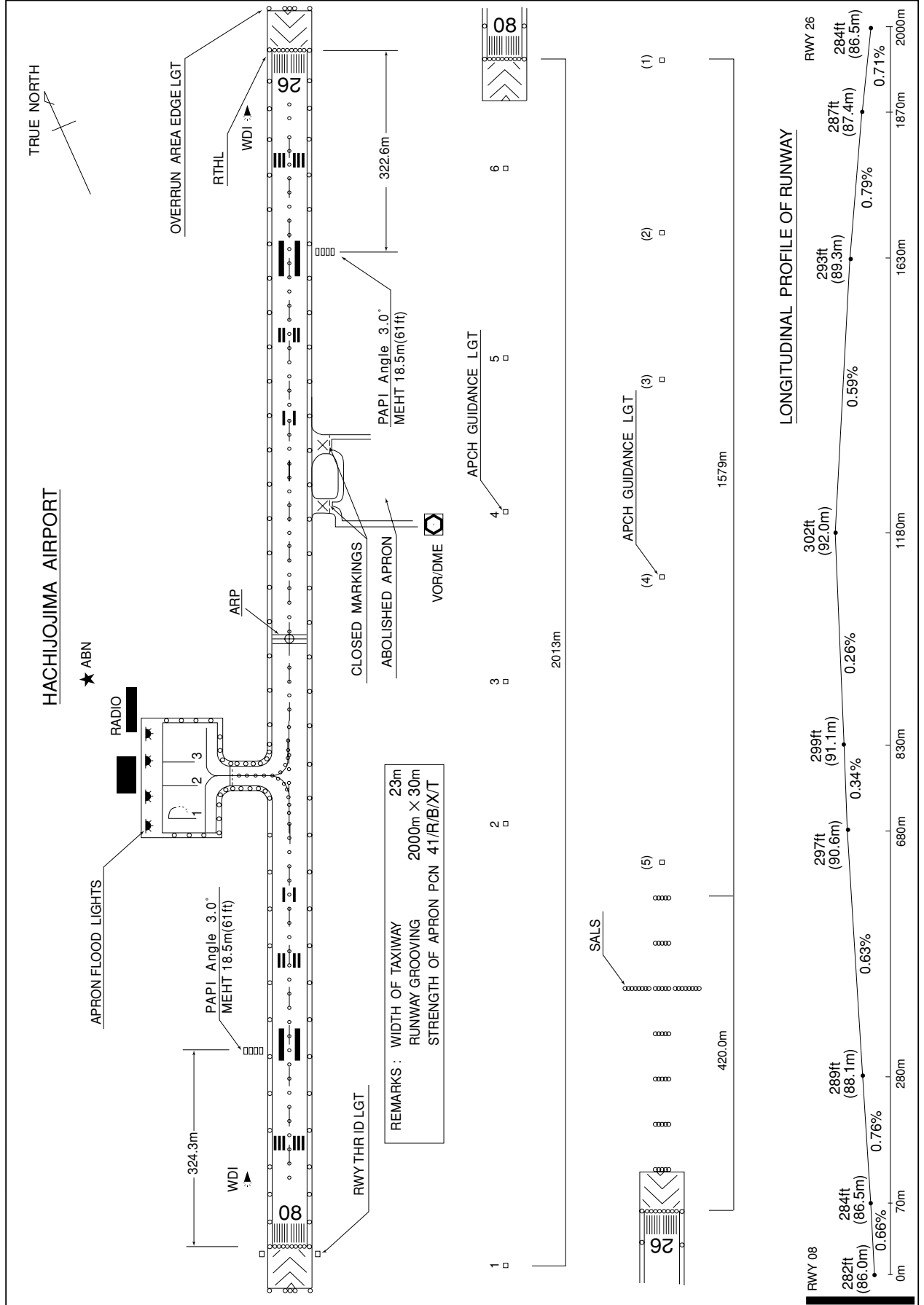


RJTH / HACHIOJIMA

AD CHART



STANDARD DEPARTURE CHART-INSTRUMENT

RJTH / HACHIJOJIMA

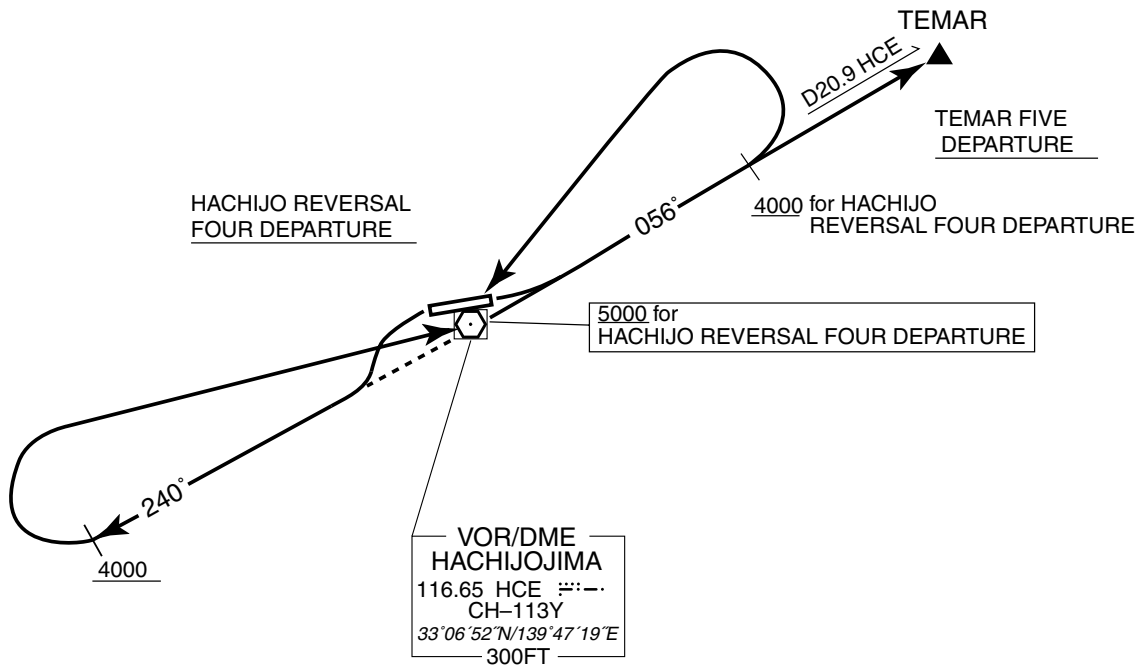
SID

TEMAR FIVE DEPARTURE

RWY 08 : Climb RWY HDG to 1000FT or above, turn left,....
RWY 26 : Turn left, climb via HCE R240 to 4000FT or above,
turn right proceed to HCE VOR/DME,
....climb via HCE R056 to TEMAR.

HACHIJO REVERSAL FOUR DEPARTURE

RWY 08 : Climb RWY HDG to 1000FT or above, turn left, climb via HCE R056
to 4000FT or above, turn left,....
RWY 26 : Turn left, climb via HCE R240 to 4000FT or above,
turn right,....
....proceed to HCE VOR/DME.
Cross HCE VOR/DME at or above 5000FT.



STANDARD DEPARTURE CHART-INSTRUMENT

RJTH / HACHIJOJIMA

SID

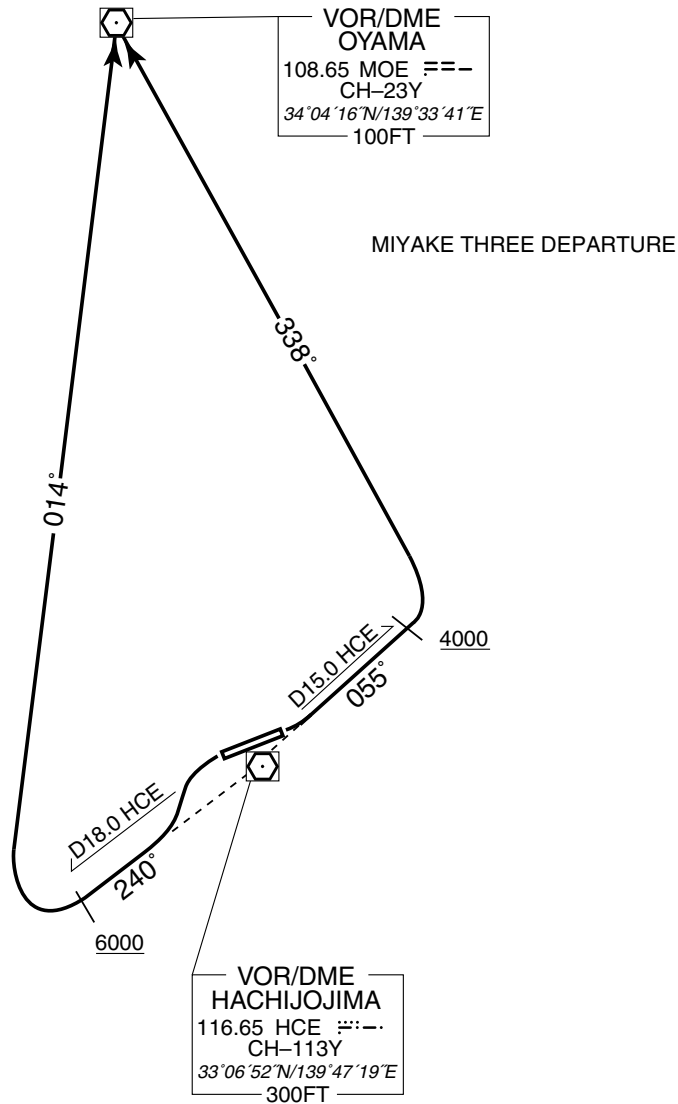
MIYAKE THREE DEPARTURE

RWY 08 : Climb RWY HDG to 1000FT or above, turn left, climb via HCE R055 to 15.0DME, turn left to intercept and proceed via MOE R158 to MOE VOR/DME.

Cross HCE R055/15.0DME at or above 4000FT.

RWY 26 : Turn left, climb via HCE R240 to 18.0DME, turn right to intercept and proceed via MOE R194 to MOE VOR/DME.

Cross HCE R240/18.0DME at or above 6000FT.



STANDARD ARRIVAL CHART-INSTRUMENT

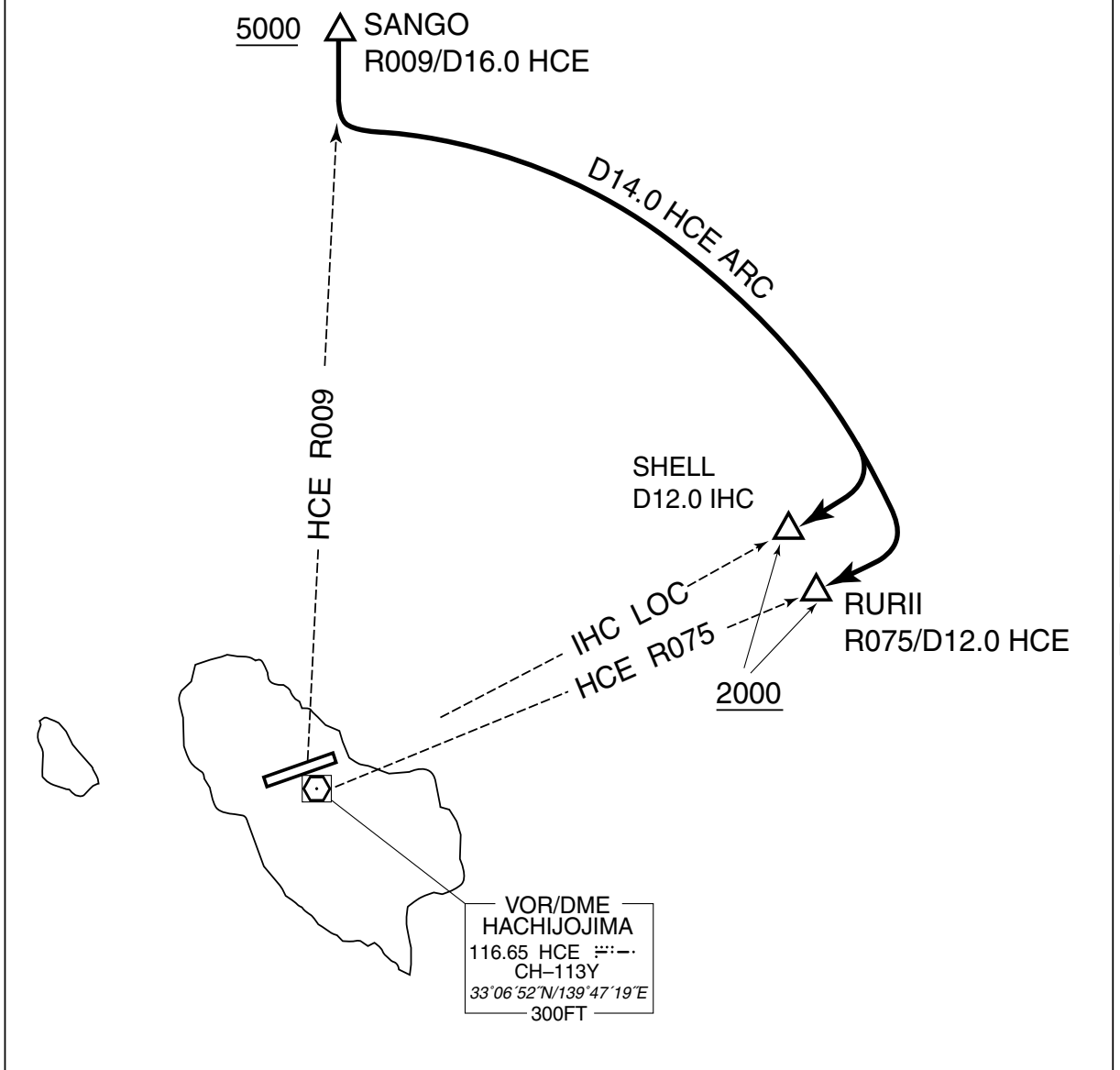
RJTH / HACHIOJIMA

STAR

HACHIOJO ARRIVAL

From over SANGO, proceed via HCE R009 to intercept and proceed via HCE 14.0DME clockwise ARC, via IHC-LOC to SHELL or HCE R075 to RURII.
Cross SANGO at or above 5000FT, cross SHELL or RURII at or above 2000FT.

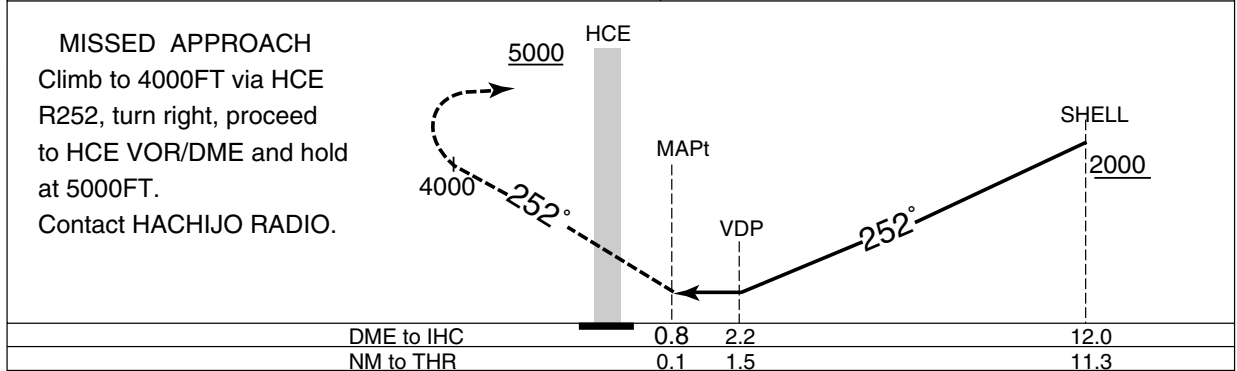
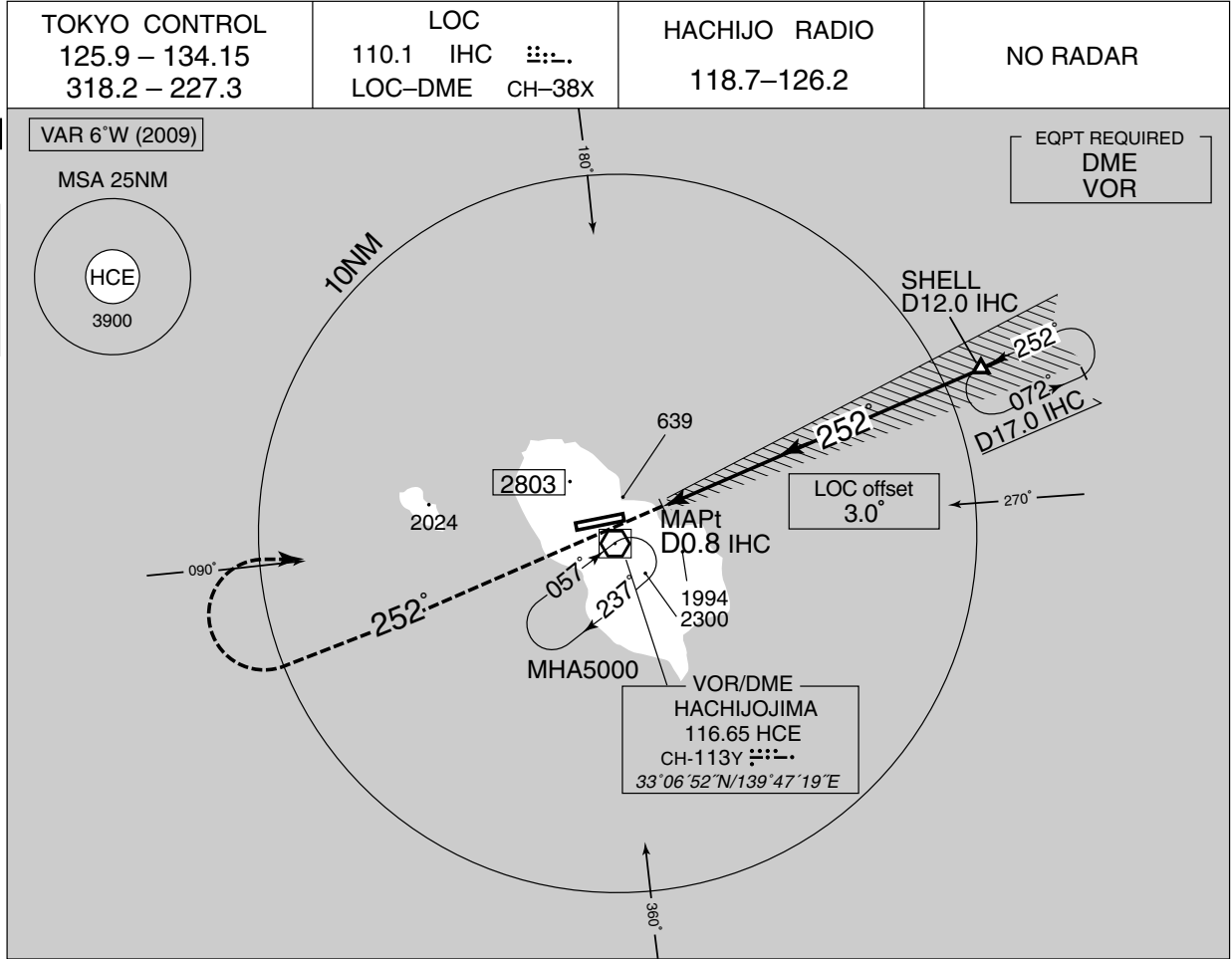
HACHIOJO ARRIVAL



INSTRUMENT APPROACH CHART

RJTH / HACHIOJIMA

LOC Z RWY26



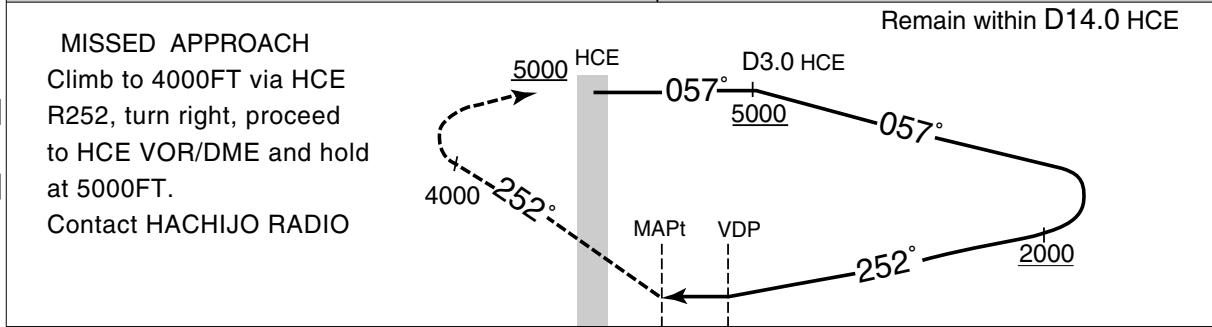
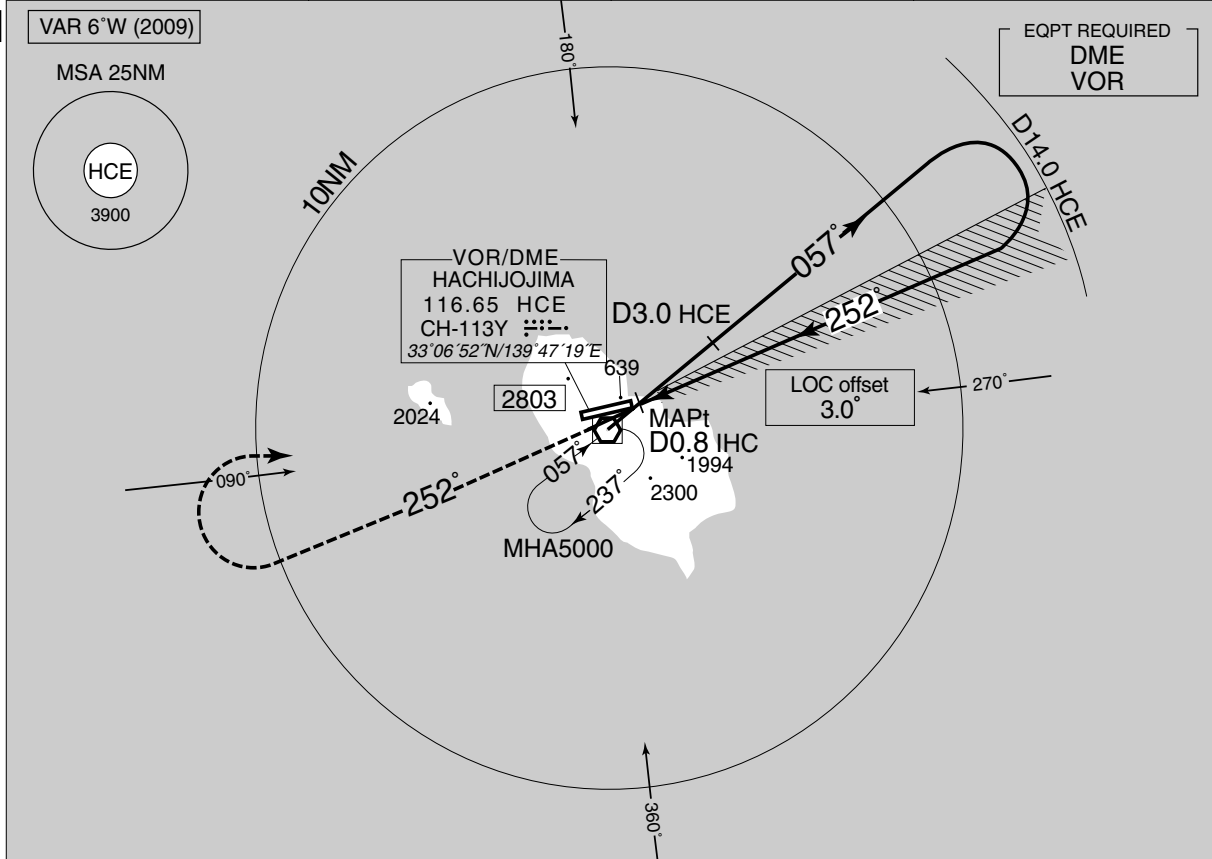
MINIMA		THR elev. 284	AD elev. 301	
CAT			CIRCLING	
	MDA(H)	CMV	MDA(H)	VIS
A	800 (516)	1400	-	-
B		1500		
C		1600		
D		1800		
Circling NOT authorized.				

INSTRUMENT APPROACH CHART

RJTH / HACHIOJIMA

LOC Y RWY26

TOKYO CONTROL 125.9 – 134.15 318.2 – 227.3	LOC 110.1 IHC $\ddot{\vdots}\vdots$ LOC-DME CH-38X	HACHIOJO RADIO 118.7 – 126.2	NO RADAR
--	--	---------------------------------	----------



DME to IHC	0.8	2.2
NM to THR	0.1	1.5

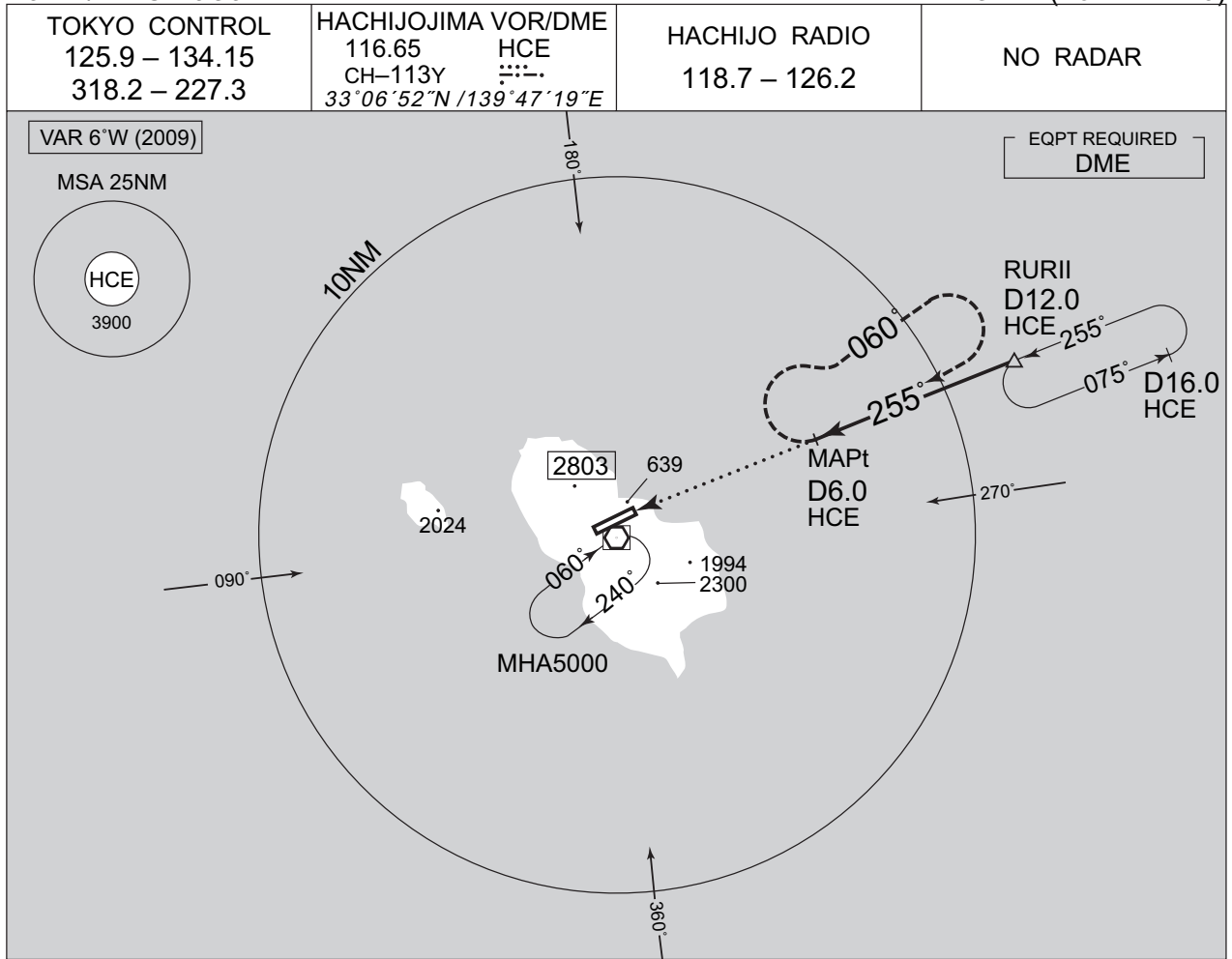
MINIMA		THR elev. 284	AD elev. 301	
CAT	CIRCLING			
	MDA(H)	CMV	MDA(H)	VIS
A	800 (516)	1400	-	-
B		1500		
C		1600		
D		1800		

Circling NOT authorized.

INSTRUMENT APPROACH CHART

RJTH / HACHIOJIMA

VOR A (For RWY 26)



MISSED APPROACH
 Turn right climb to 4000FT via HCE R060, turn right, proceed to HCE VOR/DME and hold at 5000FT.
 Contact HACHIOJIO RADIO

DME to HCE	6.0	12.0
NM to THR	5.6	11.6

MINIMA		THR elev. 284		AD elev. 301	
CAT	MDA(H)	Facilities			
		Full	Intermediate	Basic	Nil
		VIS		VIS	
A	800 (516)	-		4800	
B					
C					
D					

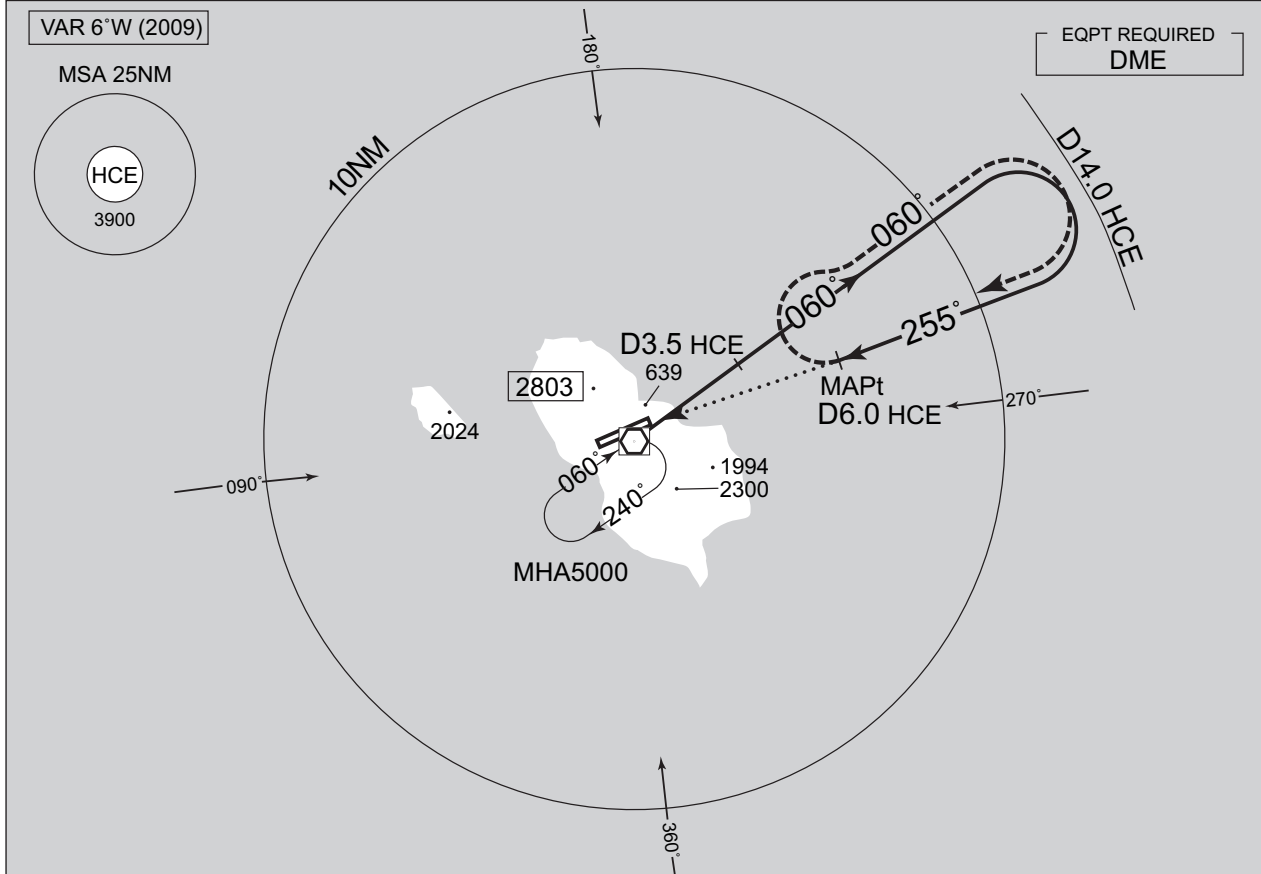
MINIMA APPLICATION CRITERIA in AD 1.1.6.10.1.4 are not applicable.

INSTRUMENT APPROACH CHART

RJTH / HACHIJOJIMA

VOR B (ForRWY26)

TOKYO CONTROL 125.9 – 134.15 318.2 – 227.3	HACHIJOJIMA VOR/DME 116.65 HCE CH-113Y 33°06'52"N/139°47'19"E	HACHIJO RADIO 118.7 – 126.2	NO RADAR
--	--	--------------------------------	----------



MISSED APPROACH
Turn right, climb to 4000FT via HCE R060, turn right, proceed to HCE VOR/DME and hold at 5000FT. Contact HACHIJO RADIO.

Remain within D14.0 HCE

DME to HCE	6.0
NM to THR	5.6

MINIMA		THR elev. 284		AD elev. 301	
CAT	MDA(H)	Facilities			
		Full VIS	Intermediate	Basic VIS	Nil
A	800 (516)	-		4800	
B					
C					
D					

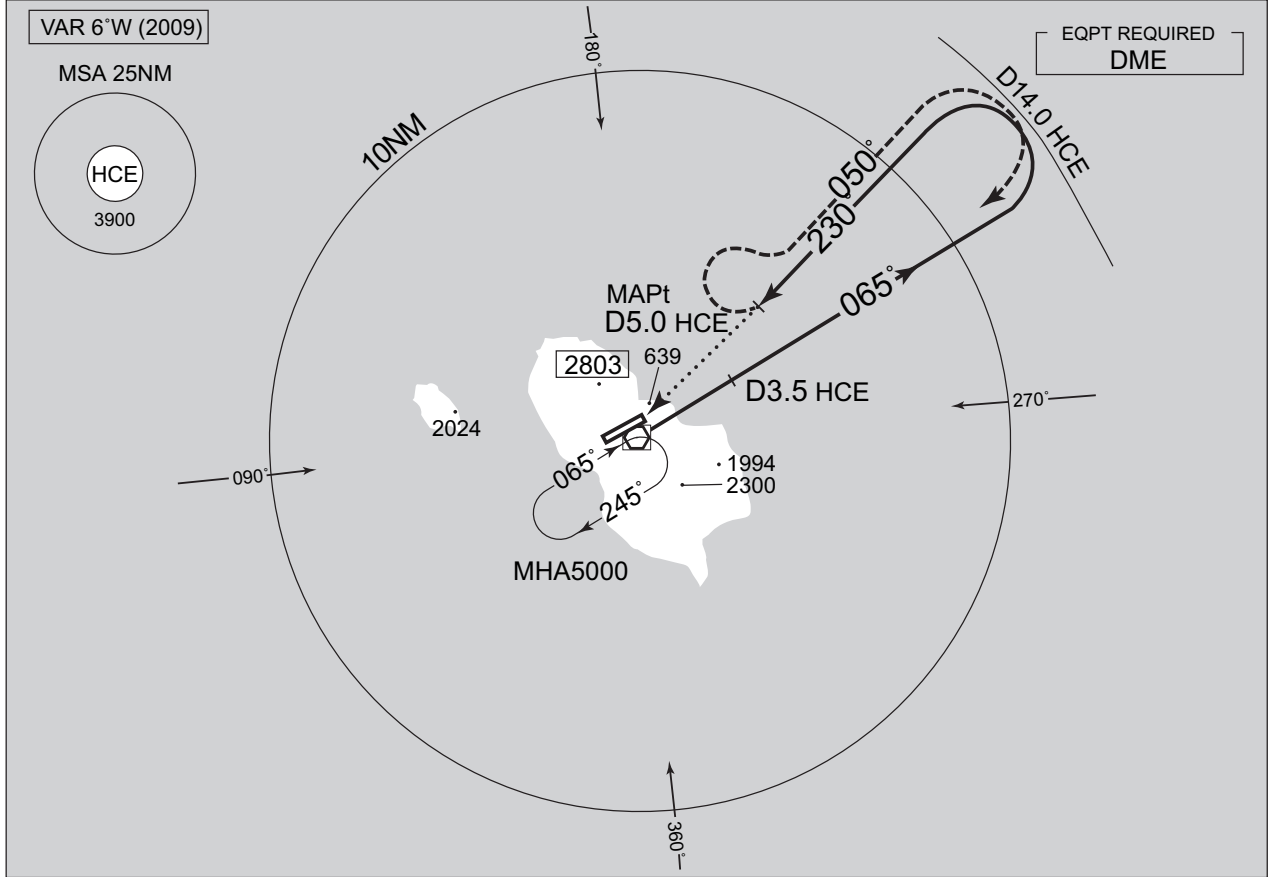
MINIMA APPLICATION CRITERIA in AD 1.1.6.10.1.4 are not applicable.

INSTRUMENT APPROACH CHART

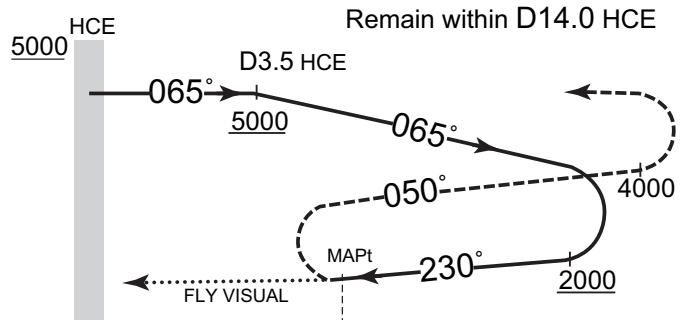
RJTH / HACHIOJIMA

VOR C (For RWY 26)

TOKYO CONTROL 125.9 – 134.15 318.2 – 227.3	HACHIOJIMA VOR/DME 116.65 HCE CH-113Y 33°06'52"N / 139°47'19"E	HACHIO RADIO 118.7 – 126.2	NO RADAR
--	---	-------------------------------	----------



MISSED APPROACH
Turn right, climb to 4000FT via HCE R050, turn right, proceed to HCE VOR/DME and hold at 5000FT. Contact HACHIOJIMA RADIO.



DME to HCE 5.0
NM to THR 4.7

MINIMA		THR elev. 284		AD elev. 301	
CAT	MDA(H)	Facilities			
		Full	Intermediate	Basic	Nil
		VIS		VIS	
A	800 (516)	-		4800	
B					
C					
D					

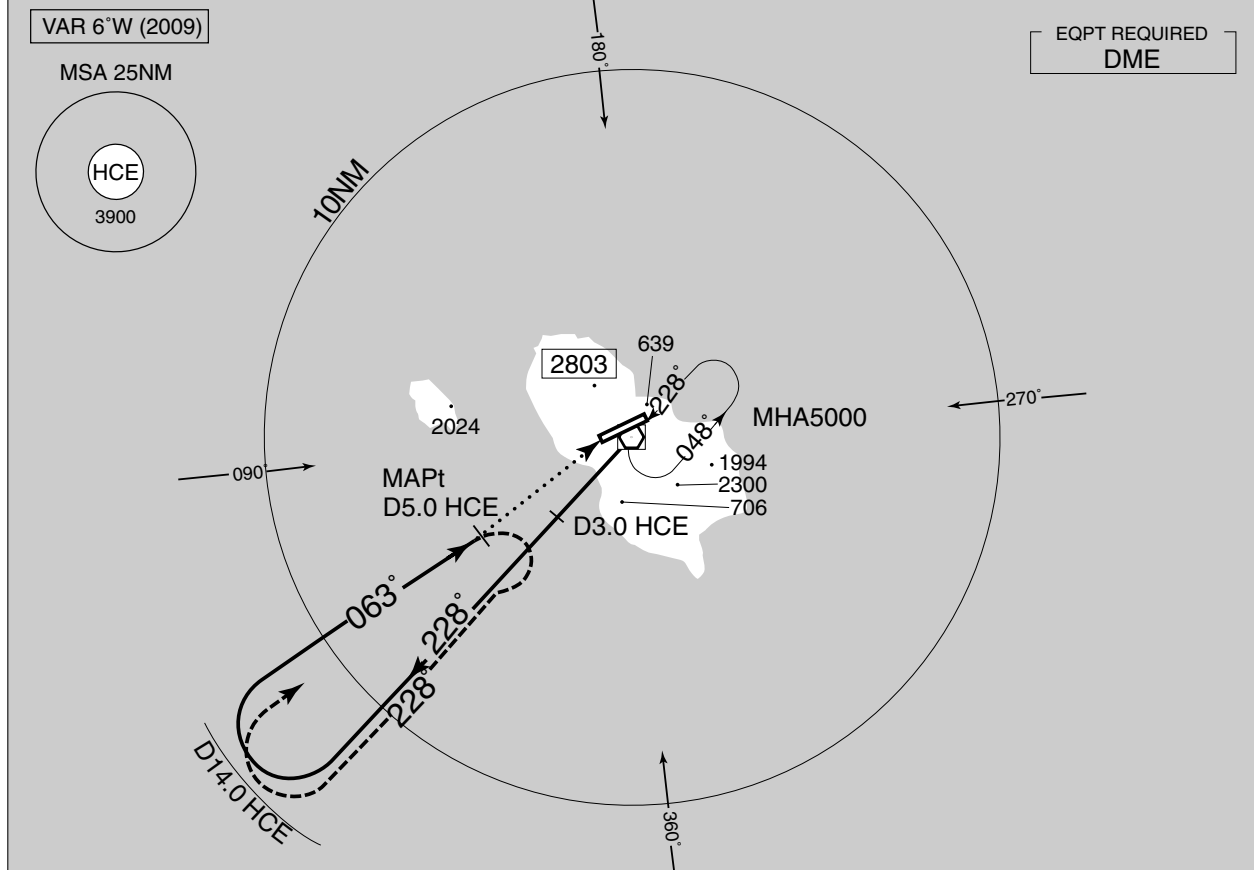
MINIMA APPLICATION CRITERIA in AD 1.1.6.10.1.4 are not applicable.

INSTRUMENT APPROACH CHART

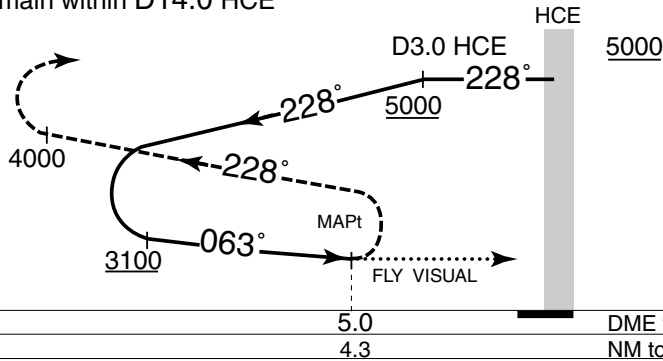
RJTH / HACHIJOJIMA

VOR D (For RWY 08)

TOKYO CONTROL 125.9 – 134.15 318.2 – 227.3	HACHIJOJIMA VOR/DME 116.65 HCE CH-113Y 33°06'52"N / 139°47'19"E	HACHIJO RADIO 118.7 – 126.2	NO RADAR
--	--	--------------------------------	----------



Remain within D14.0 HCE

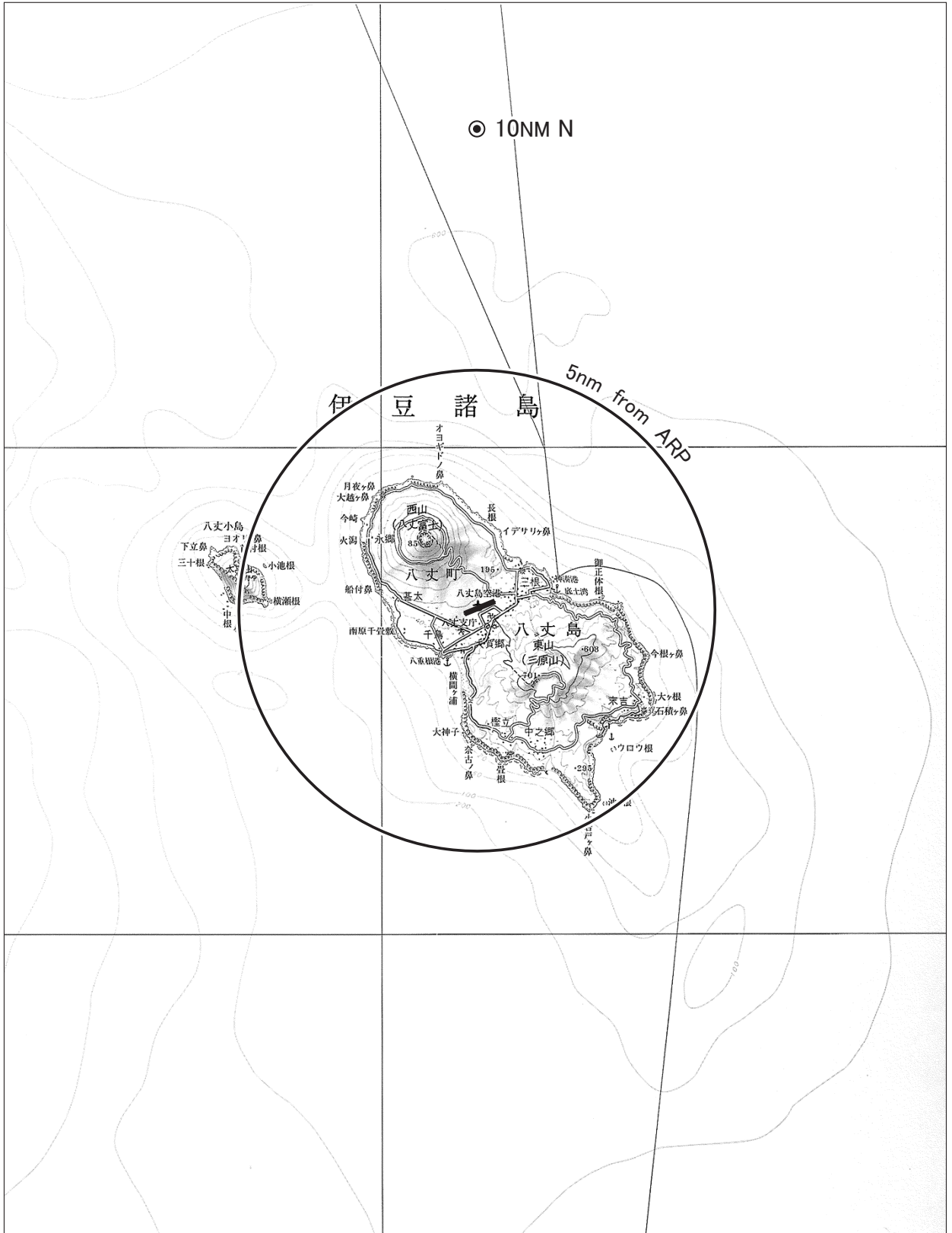


MISSED APPROACH
Turn right, climb to 4000FT via HCE R228, turn right, proceed to HCE VOR/DME and hold at 5000FT. Contact HACHIJO RADIO.

MINIMA		THR elev. 282		AD elev. 301	
CAT	MDA(H)	Facilities			
		Full	Intermediate	Basic	Nil
		VIS			VIS
A	800 (518)				4800
B					
C					
D					

RJTH/HACHIJOJIMA

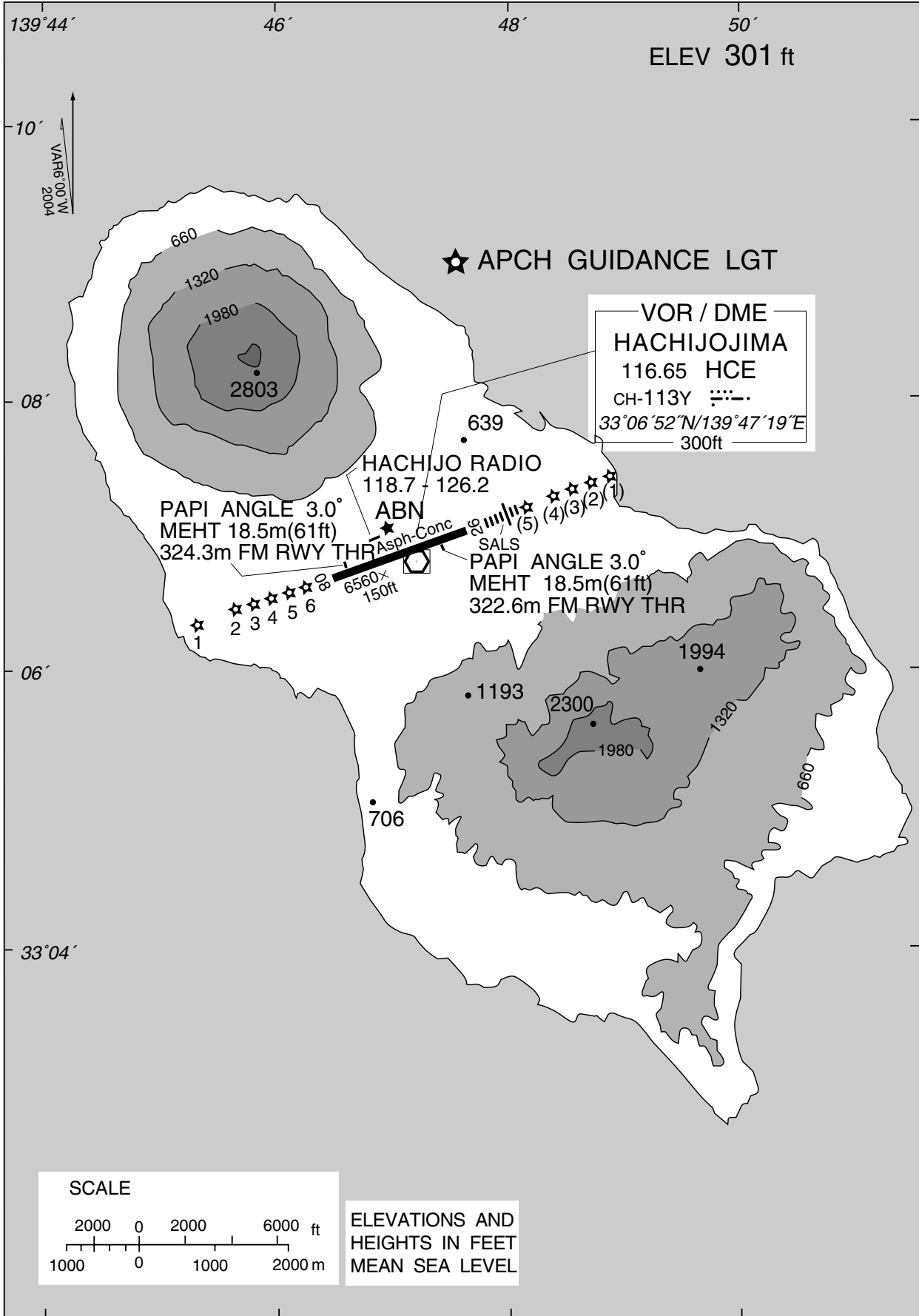
Visual REP



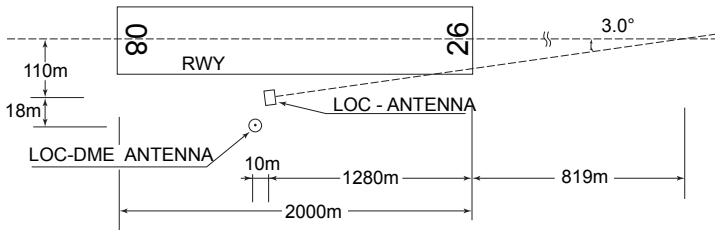
Call sign	BRG / DIST from ARP	Remarks
10NM N	360° /10.0NM	海上 Over the sea

RJTH / HACHIJOJIMA

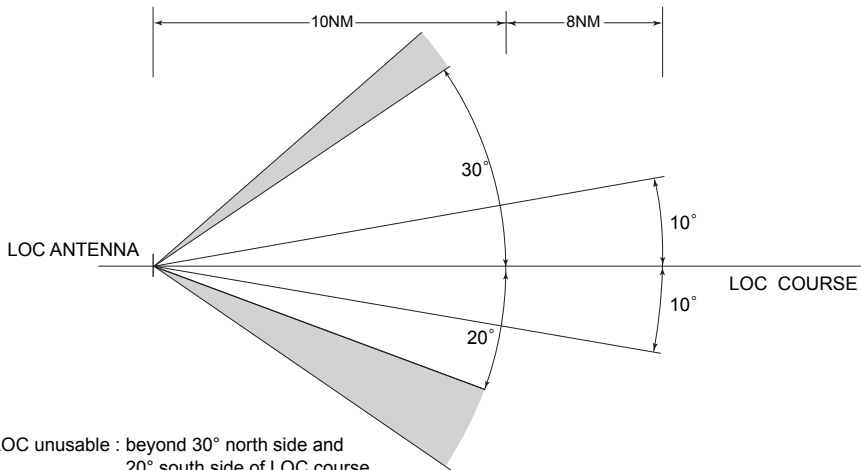
LDG CHART



HACHIJOJIMA AP



REMARKS : 1. LOC offset Angle 3.0°
2. LOC beam BRG(MAG) 252°



LOC unusable : beyond 30° north side and 20° south side of LOC course.