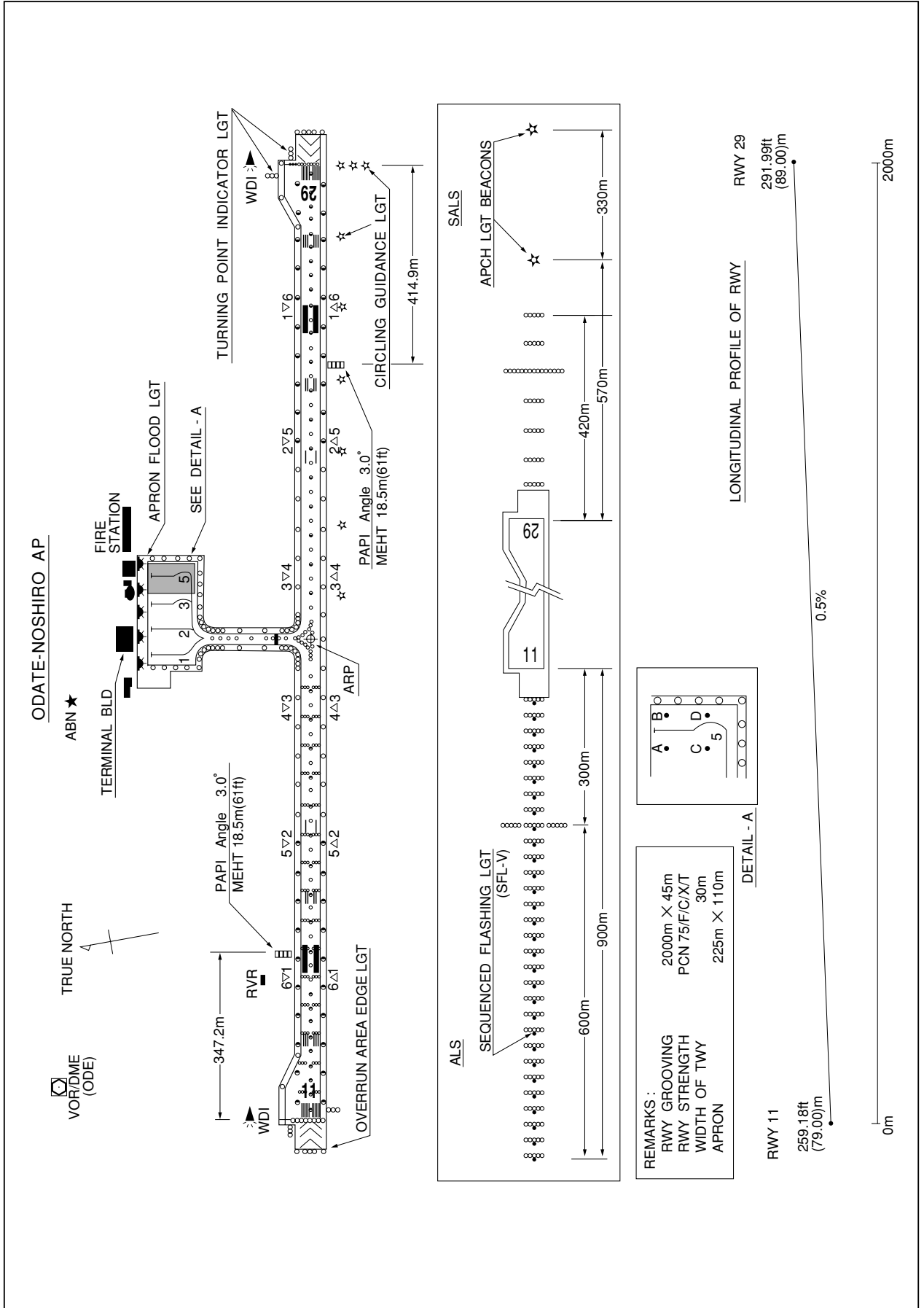


RJSR / ODATE-NOSHIRO

AD CHART



STANDARD DEPARTURE CHART -INSTRUMENT

RJSR / ODATE-NOSHIRO

SID

ODATE REVERSAL ONE DEPARTURE

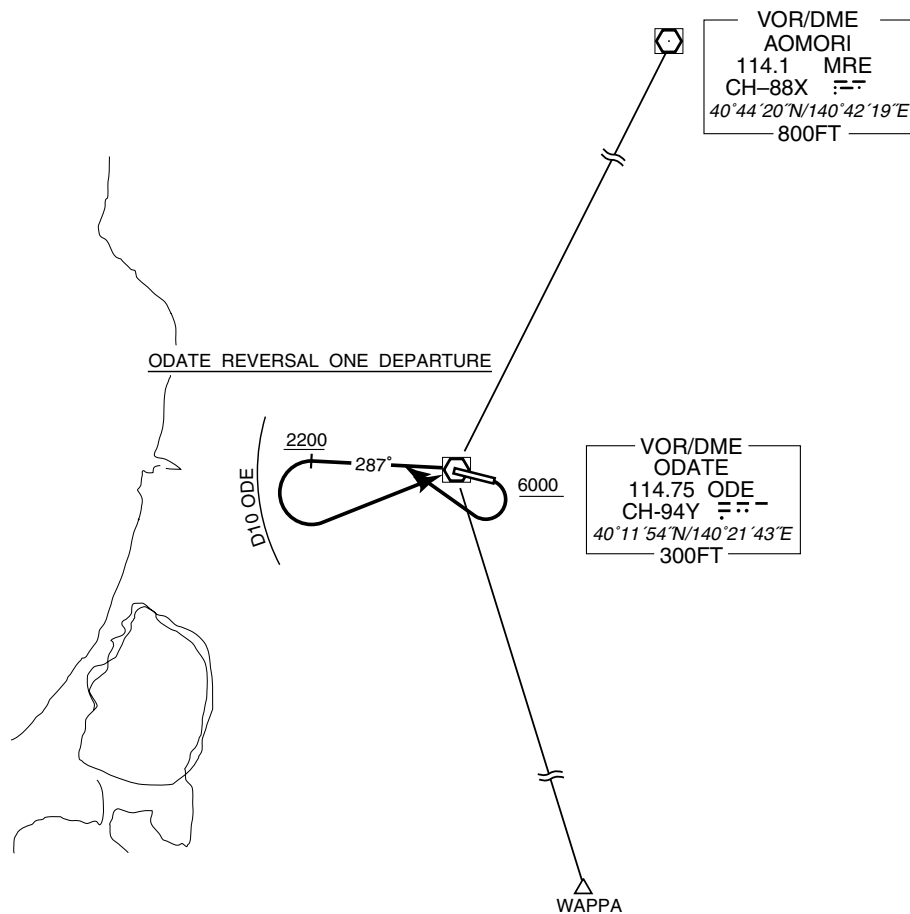
RWY11 : Turn right, climb via ODE R287 to 2200FT or above, turn left within ODE 10DME, proceed to ODE VOR/DME....

RWY29 : Climb via ODE R287 to 2200FT or above, turn left within ODE 10DME, proceed to ODE VOR/DME....

....Cross ODE VOR/DME at or above 6000FT.

Note : When take off RWY 11/29 following climb gradient should be maintained until 2200FT.

Speed (Knots)	60	90	120	150	180	210
Rate (Feet/Min)	300	450	600	750	900	1050



STANDARD DEPARTURE CHART -INSTRUMENT

RJSR / ODATE-NOSHIRO

SID

SHIRAKAMI TWO DEPARTURE

RWY11 : Turn right,....

RWY29:

...Climb via ODE R287 to 10DME, turn right to intercept and proceed via UWE R360 to 49DME, turn right via MRE R248 to MRE VOR/DME.

Cross ODE R287/10DME at or above 3000FT, cross UWE R360/47DME at or above 5500FT, cross MRE R248/15DME at or above 7000FT.

Note : When take off RWY 11/29 following climb gradient should be maintained until 2200FT.

Speed (Knots)	60	90	120	150	180	210
Rate (Feet/Min)	300	450	600	750	900	1050

LAGOON TWO DEPARTURE

RWY11 : Turn right,....

RWY29:

...Climb via ODE R287 to 10DME, turn left to intercept and proceed via UWE R360 to UWE VOR/DME.

Cross ODE R287/10DME at or above 3000FT.

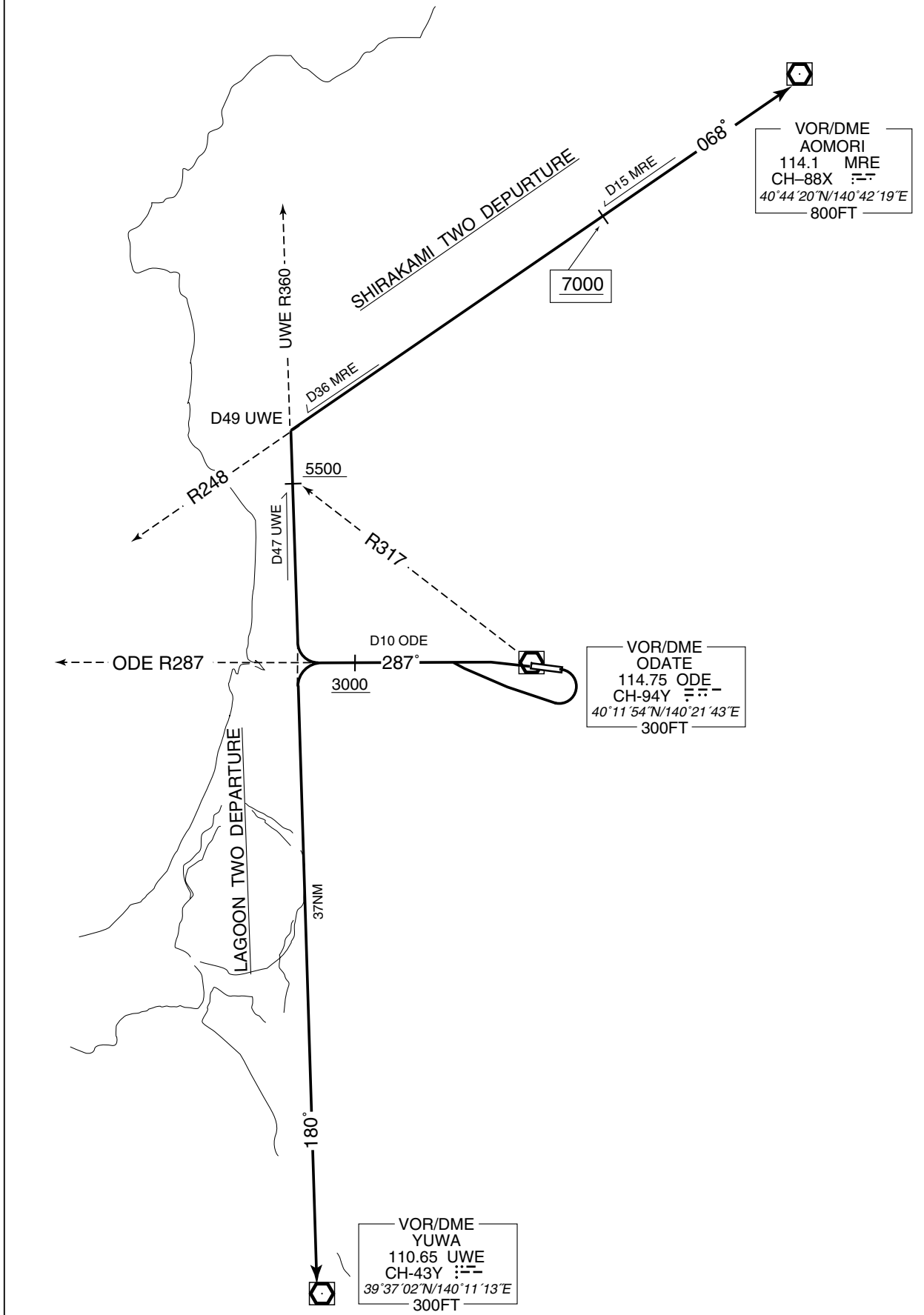
Note : When take off RWY 11/29 following climb gradient should be maintained until 2200FT.

Speed (Knots)	60	90	120	150	180	210
Rate (Feet/Min)	300	450	600	750	900	1050

STANDARD DEPARTURE CHART - INSTRUMENT

RJSR / ODATE-NOSHIRO

→ SID



STANDARD ARRIVAL CHART - INSTRUMENT

RJSR / ODATE-NOSHIRO

STAR

NOSSY NORTH ARRIVAL

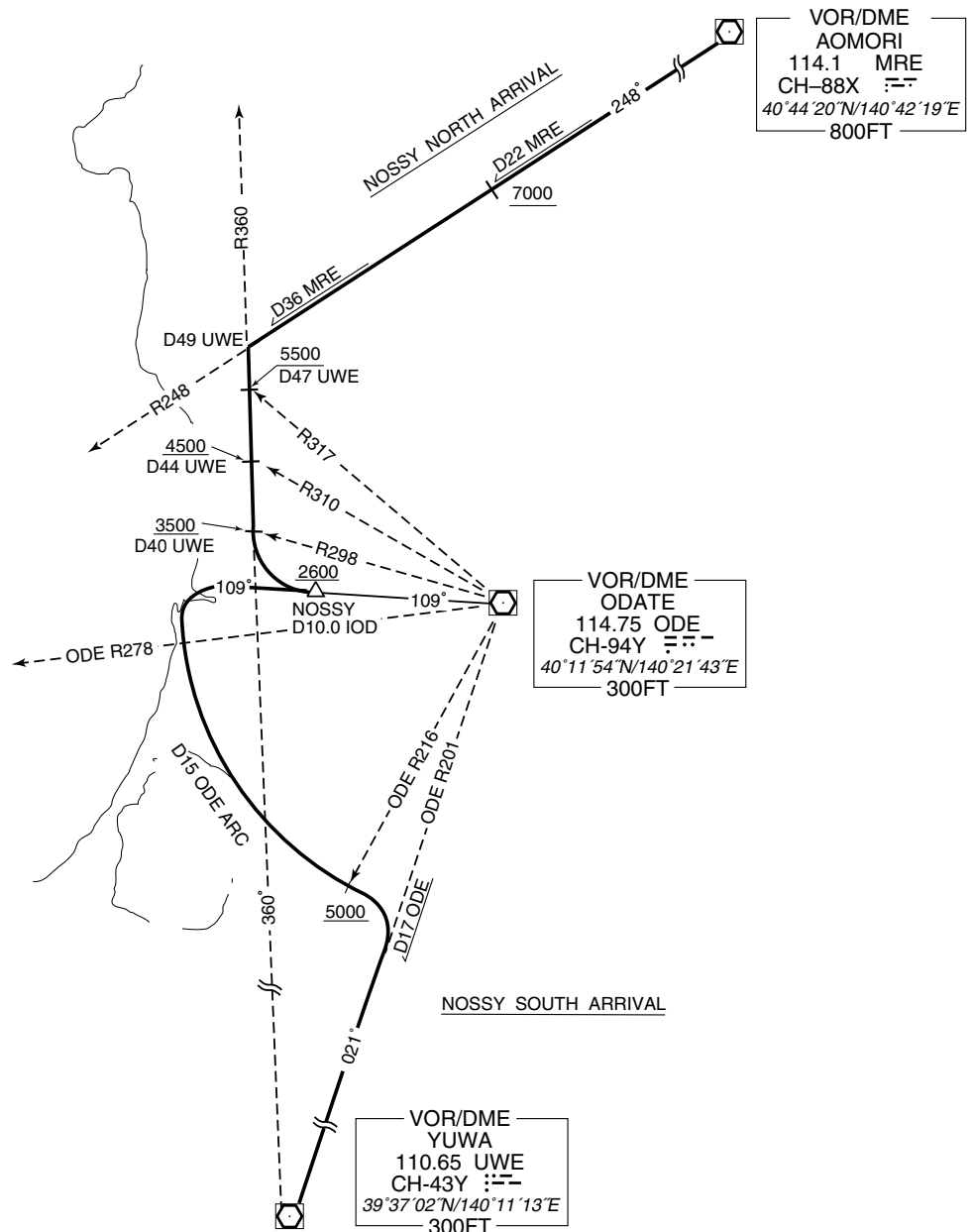
From over MRE VOR/DME, via MRE R248 to 36DME, turn left via UWE R360 to 40DME, turn left to intercept and proceed via IOD-LOC to NOSSY.

Cross MRE R248/22DME at or above 7000FT, cross UWE R360/47DME at or above 5500FT, cross UWE R360/44DME at or above 4500FT, cross UWE R360/40 DME at or above 3500FT, cross NOSSY at or above 2600FT.

NOSSY SOUTH ARRIVAL

From over UWE VOR/DME, via ODE R201 to 17DME, turn left via ODE 15DME clockwise ARC to intercept and proceed via IOD-LOC to NOSSY.

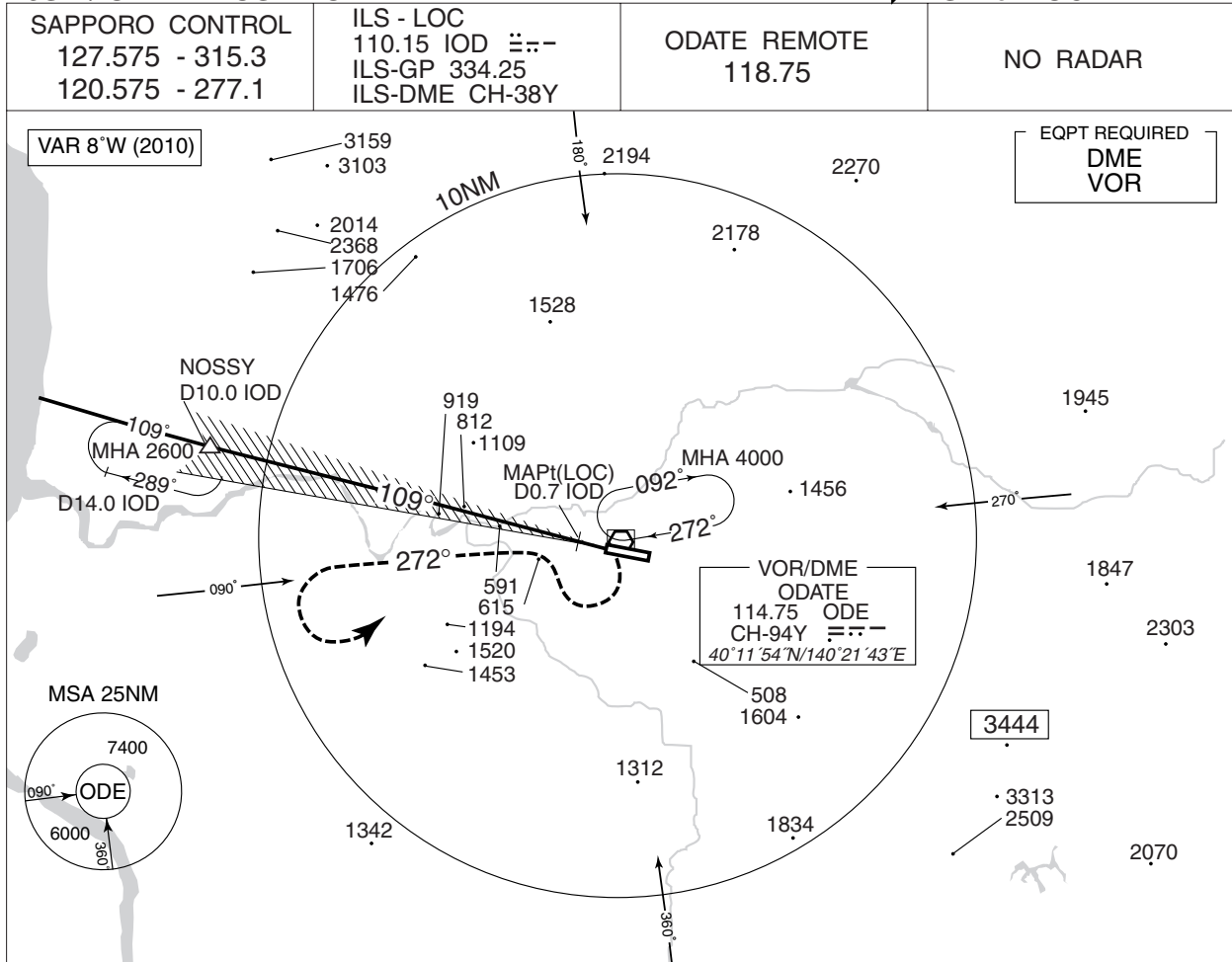
Cross ODE R216 at or above 5000FT, cross NOSSY at or above 2600FT.



INSTRUMENT APPROACH CHART

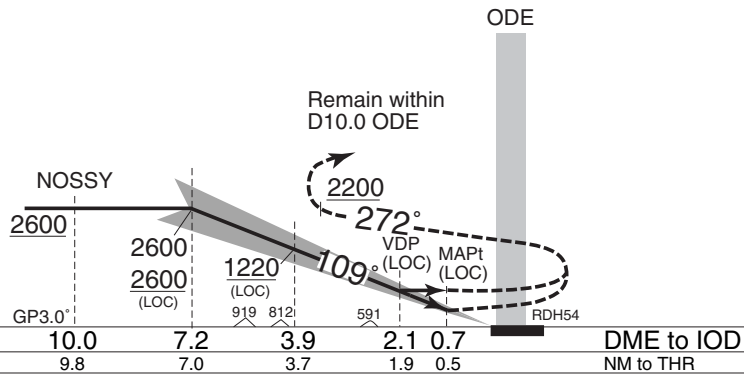
RJSR / ODATE-NOSHIRO

➔ ILS Z or LOC Z RWY 11



MISSED APPROACH

Turn right climb via
ODE R272 to 2200FT or above,
turn left within ODE 10.0DME,
proceed to ODE VOR/DME
and hold at 4000FT
Contact ODATE REMOTE.



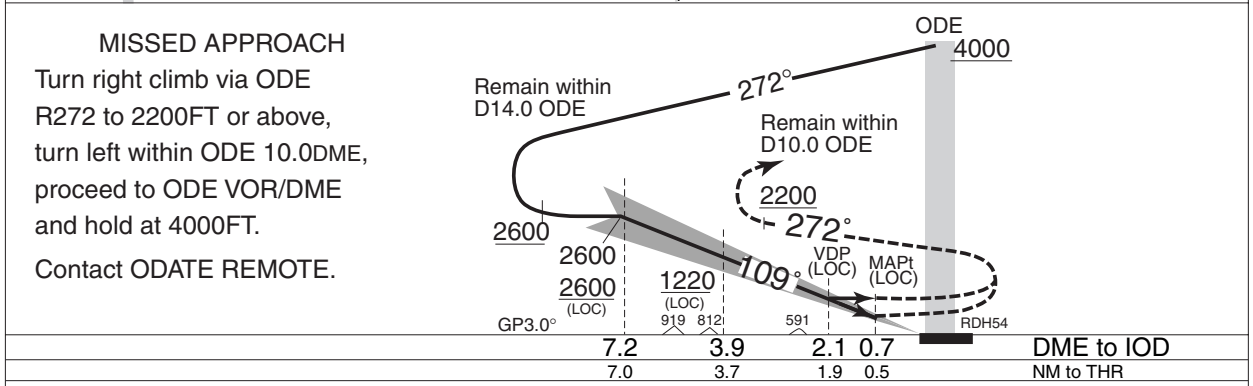
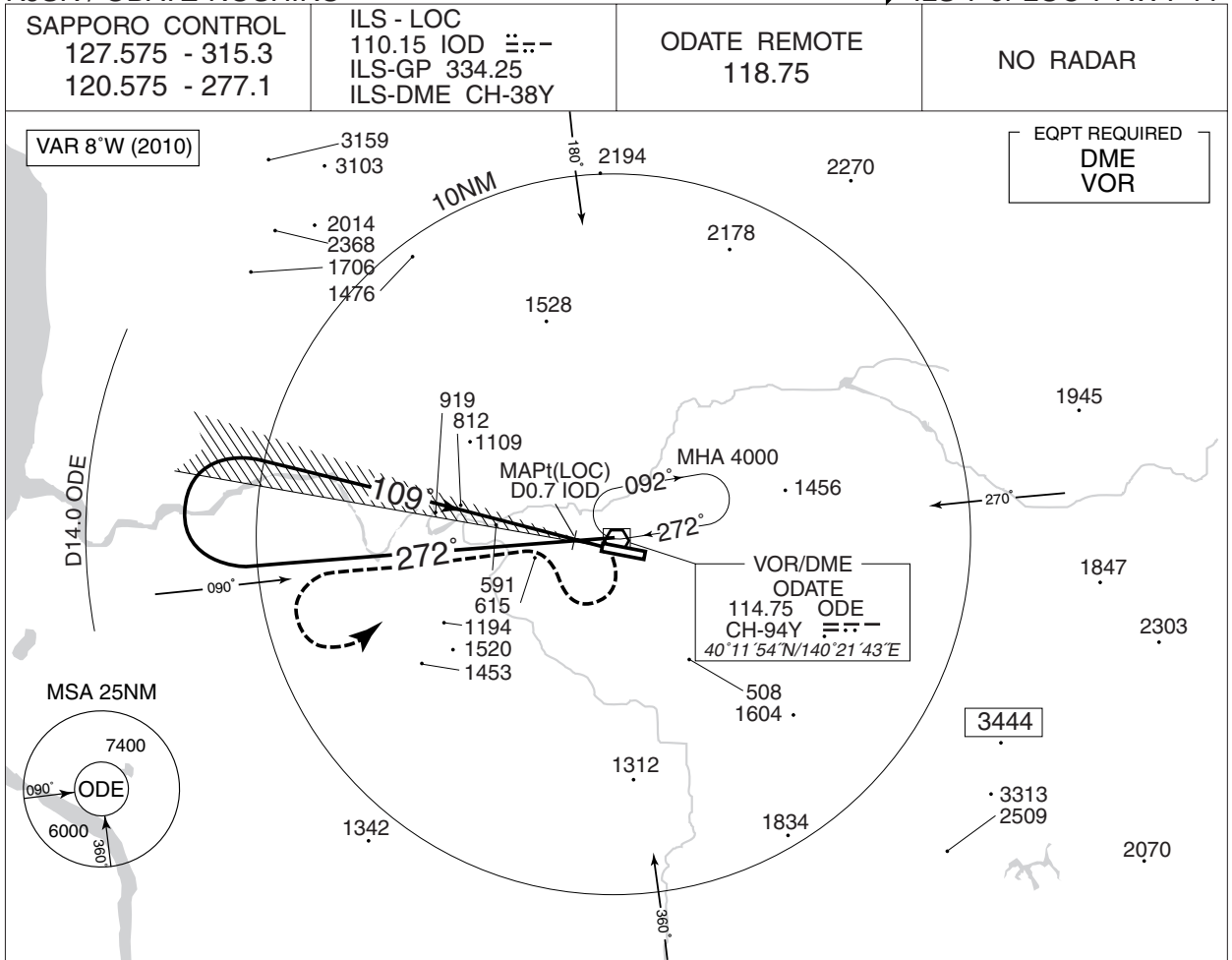
MINIMA		THR elev. 259		AD elev. 276			
CAT	CAT I		LOC		CIRCLING		
	DA(H)	RVR/CMV	MDA(H)	RVR/CMV	MDA(H)	VIS	
A	474 (215)	600	900 (641)	1000	1220 (944)	1600	
B				1200			
C				1600			2400
D							3200

Circling to SOUTH side of RWY only.

INSTRUMENT APPROACH CHART

RJSR / ODATE-NOSHIRO

➔ ILS Y or LOC Y RWY 11



MINIMA		THR elev. 259		AD elev. 276			
CAT	CAT I		LOC		CIRCLING		
	DA(H)	RVR/CMV	MDA(H)	RVR/CMV	MDA(H)	VIS	
A	474 (215)	600	900 (641)	1000	1220 (944)	1600	
B				1200			
C				1220 (944)			2400
D				1600			3200

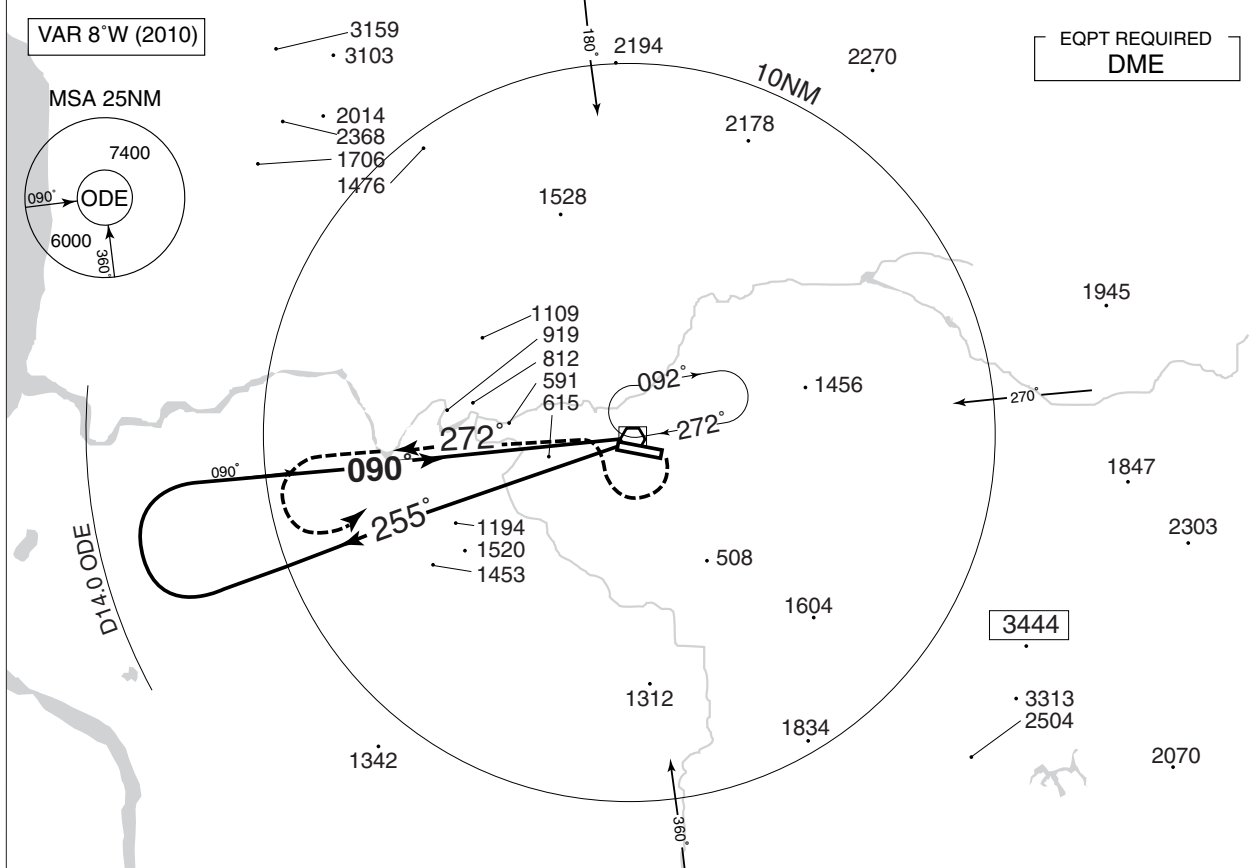
Circling to SOUTH side of RWY only.

INSTRUMENT APPROACH CHART

RJSR / ODATE-NOSHIRO

VOR RWY 11

SAPPORO CONTROL 127.575 - 315.3 120.575 - 277.1	ODATE VOR/DME 114.75 ODE CH-94Y 40°11'54"N/140°21'43"E	ODATE REMOTE 118.75	NO RADAR
---	---	------------------------	----------



MISSED APPROACH
Turn right climb via ODE R272 to 2200FT or above, turn left within ODE 10.0DME, proceed to ODE VOR/DME and hold at 4000FT.
Contact ODATE REMOTE.

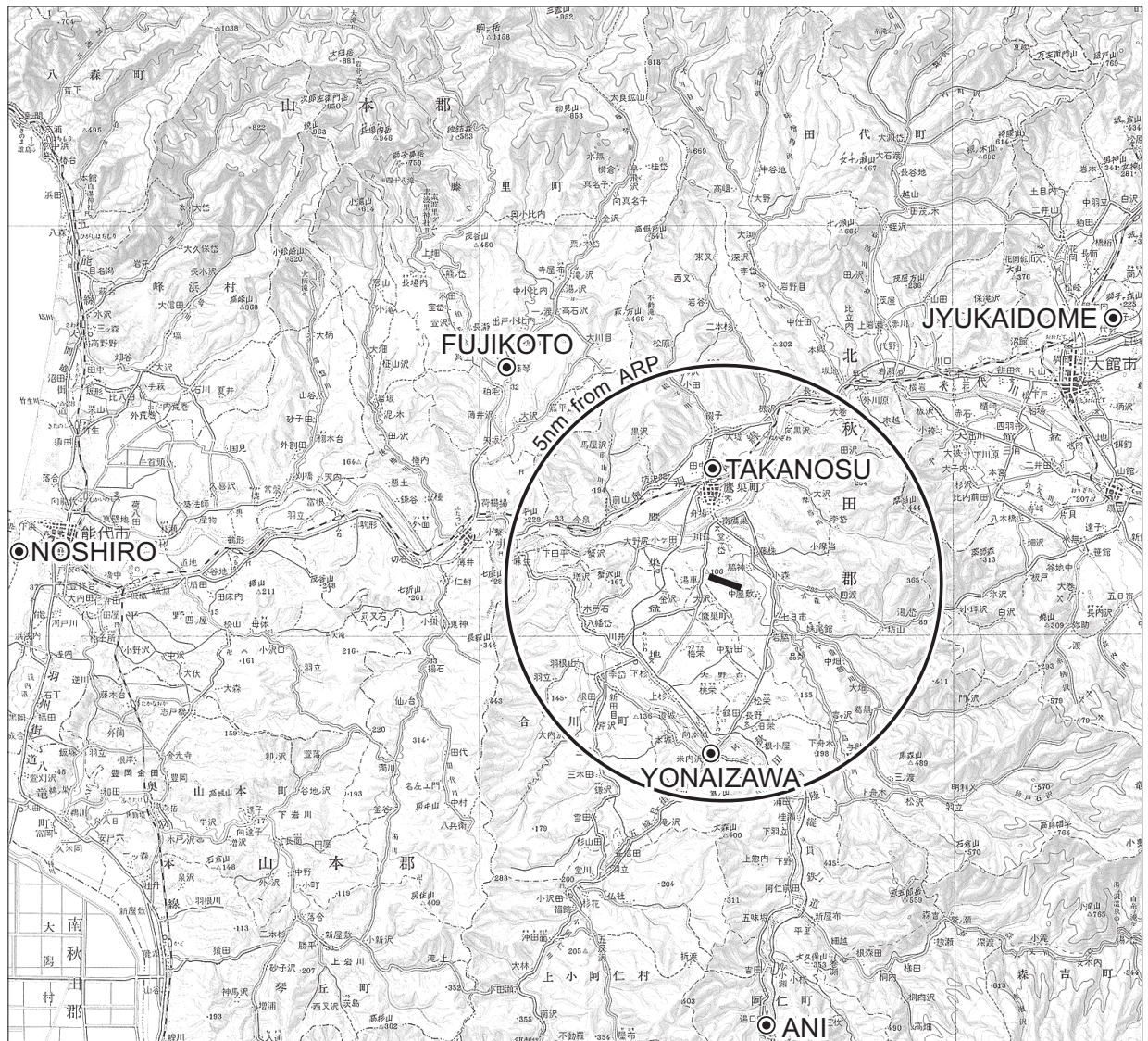
5.0	4.1	2.2	DME to ODE NM to THR
4.9	4.0	2.1	

MINIMA		THR elev. 259	AD elev. 276	
CAT			CIRCLING	
	MDA(H)	RVR/CMV	MDA(H)	VIS
A	920 (661)	1200	1220 (944)	1600
B		1400		2400
C		1800		3200
D				

Circling to SOUTH side of RWY only.

RJSR/ODATE-NOSHIRO

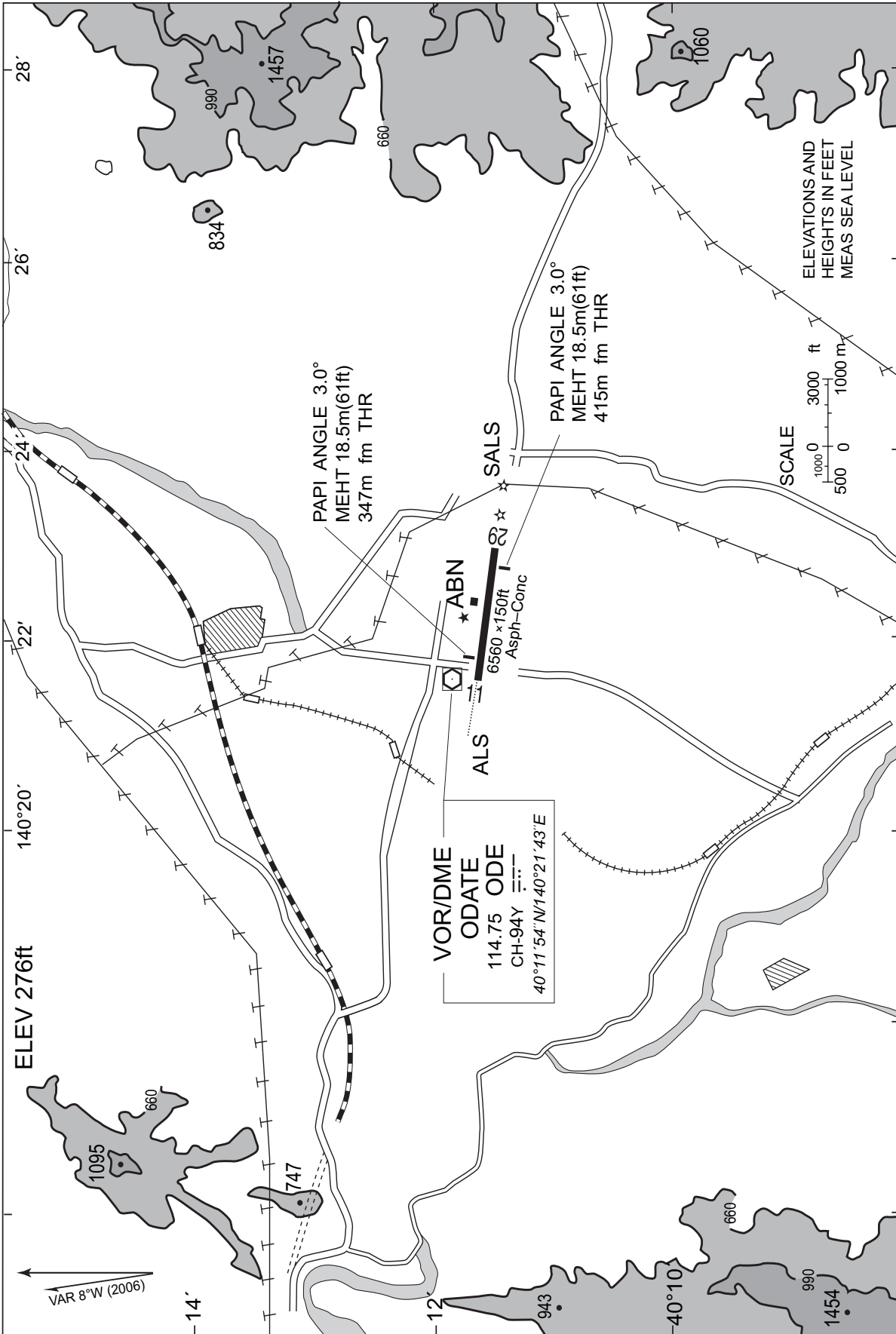
Visual REP



Call sign	BRG / DIST from ARP	Remarks
鷹 巢 Takanosu	356°/ 3.0NM	JR駅北側 North of JR Station
藤 琴 Fujikoto	316°/ 7.0NM	粕毛川・藤琴川交点 Intersection Kasuge and Fujikoto River
樹海ドーム JyukaiDome	058°/11.9NM	大館市白色ドーム White Dome Odate City
米 内 沢 Yonaizawa	181°/ 4.2NM	内陸線米内沢駅南側米内沢橋 Bridge
能 代 Noshiro	272°/17.4NM	能代港 Noshiro Harbor
阿 仁 Ani	173°/11.8NM	内陸線阿仁合駅 Station

RJSR / ODATE-NOSHIRO

LDG CHART



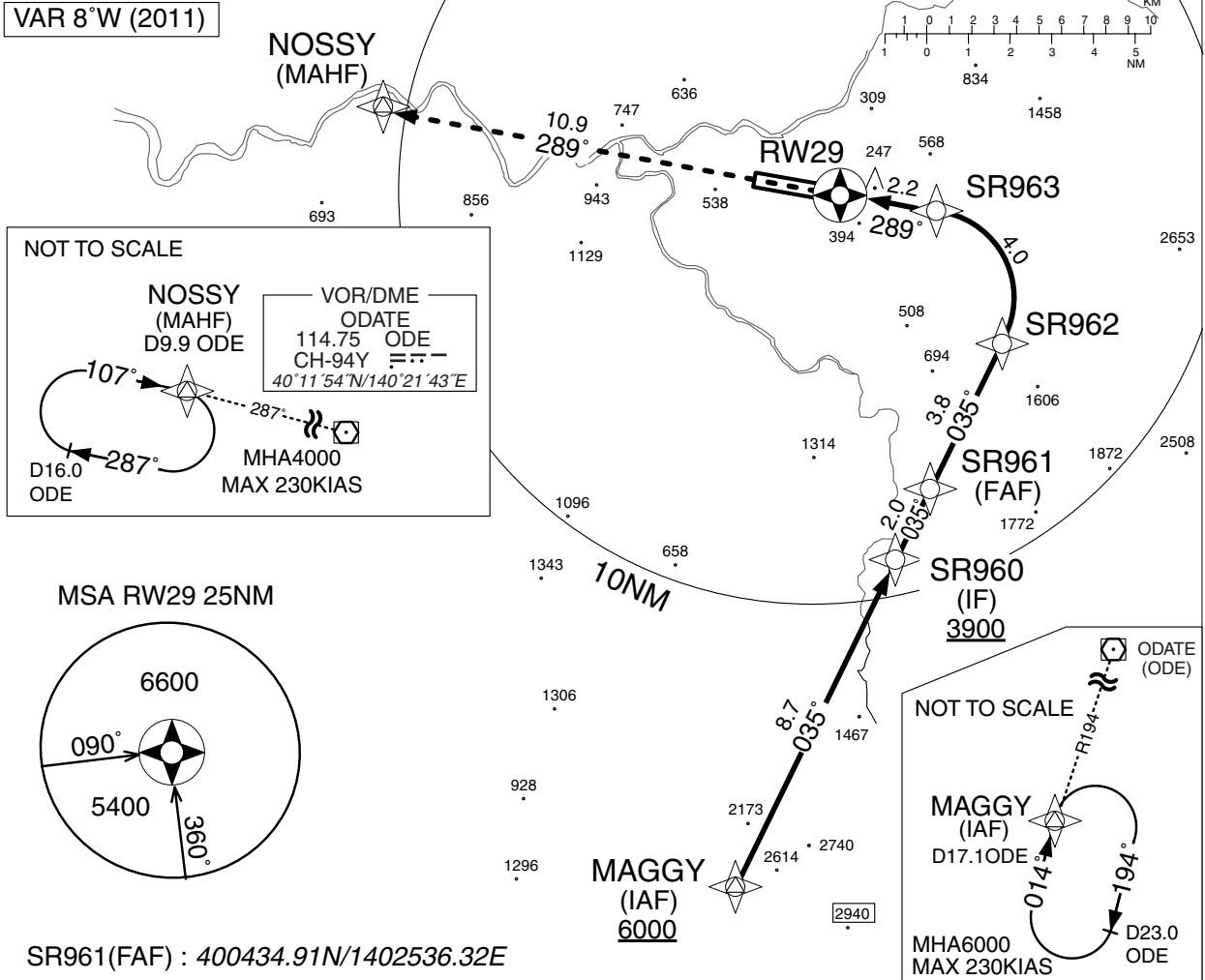
INSTRUMENT APPROACH CHART

RJSR / ODATE-NOSHIRO

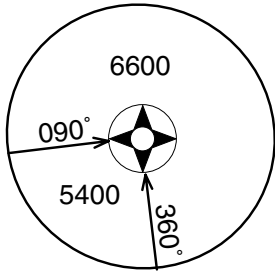
➔ RNAV(RNP) Z RWY29

SAPPORO CONTROL 127.575 - 315.3 120.575 - 277.1	GNSS and RF required.	ODATE REMOTE 118.75	NO RADAR
---	-----------------------	------------------------	----------

For uncompensated Baro-VNAV systems, procedure NA below -15°C / above 45°C



MSA RW29 25NM

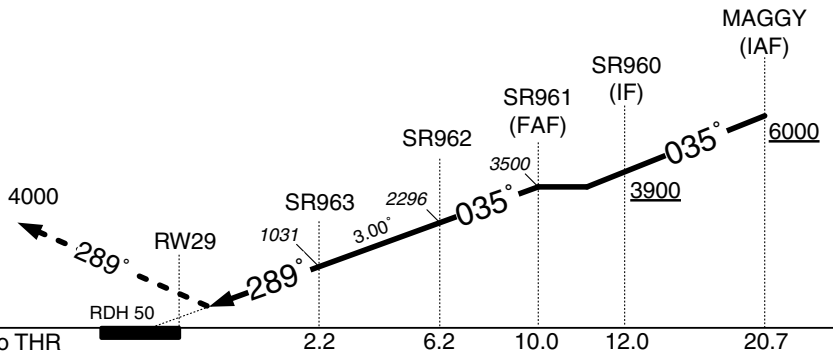


SR961(FAF) : 400434.91N/1402536.32E

MISSED APPROACH

Climb to 4000FT, to NOSSY and hold.

Contact ODATE REMOTE.



MINIMA THR elev. 292 AD elev. 276		NM to THR	
		2.2	6.2
		10.0	12.0
		20.7	
CAT	RNP 0.30		
	DA(H)	CMV	
A	-	-	
B	-	-	
C	643(351)	1400	
D	-	-	

RNP AR
Special Authorization Required

INSTRUMENT APPROACH CHART

RJSR / ODATE-NOSHIRO

➔ RNAV(RNP) Z RWY29

RNAV(RNP) Z RWY29Coding Table

Serial Number	Path Descriptor	Waypoint Identifier	Fly Over	Course [°M(°T)]	Magnetic Variation	Distance (NM)	Turn Direction	Altitude (FT)	Speed (KIAS)	VPA/RDH (°/FT)	RNP Value
001	IF	MAGGY	—	—	-8.5	—	—	+6000	—	—	—
002	TF	SR960	—	035 (026.1)	-8.5	8.7	—	+3900	—	—	1.0
003	TF	SR961	—	035 (026.1)	-8.5	2.0	—	3500	—	—	1.0
004	TF	SR962	—	035 (026.1)	-8.5	3.8	—	—	—	—	0.3
005	RF Center: SRRF1 r=2.15NM	SR963	—	—	-8.5	4.0	L	—	—	—	0.3
006	TF	RW29	Y	289 (280.1)	-8.5	2.2	—	—	—	-3.00/50	0.3
007	TF	NOSSY	—	289 (280.3)	-8.5	10.9	—	4000	—	—	1.0

Waypoint Coordinates

Waypoint Identifier	Coordinates	RF Arc Center Identifier	Coordinates
MAGGY	395456.61N / 1401926.80E	SRRF1	400855.54N / 1402516.24E
SR960	400247.11N / 1402427.29E		
SR961	400434.91N / 1402536.32E		
SR962	400758.60N / 1402746.93E		
SR963	401102.48N / 1402545.54E		
RW29	401125.10N / 1402258.78E		
NOSSY	401321.82N / 1400854.64E		

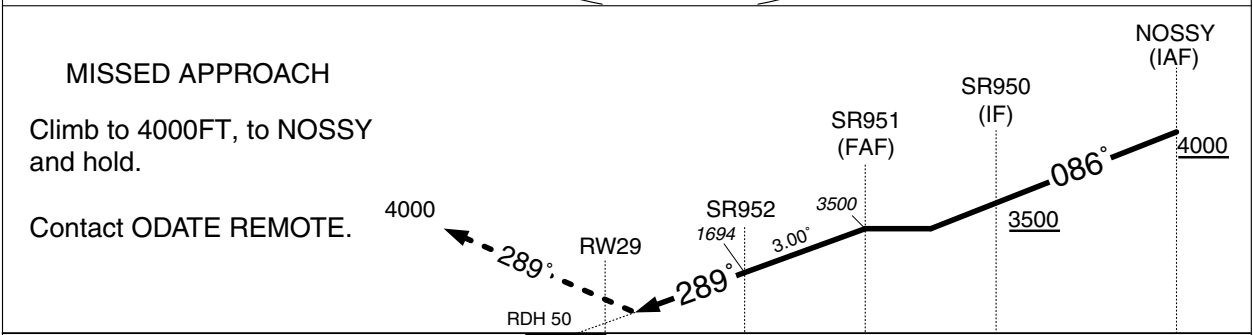
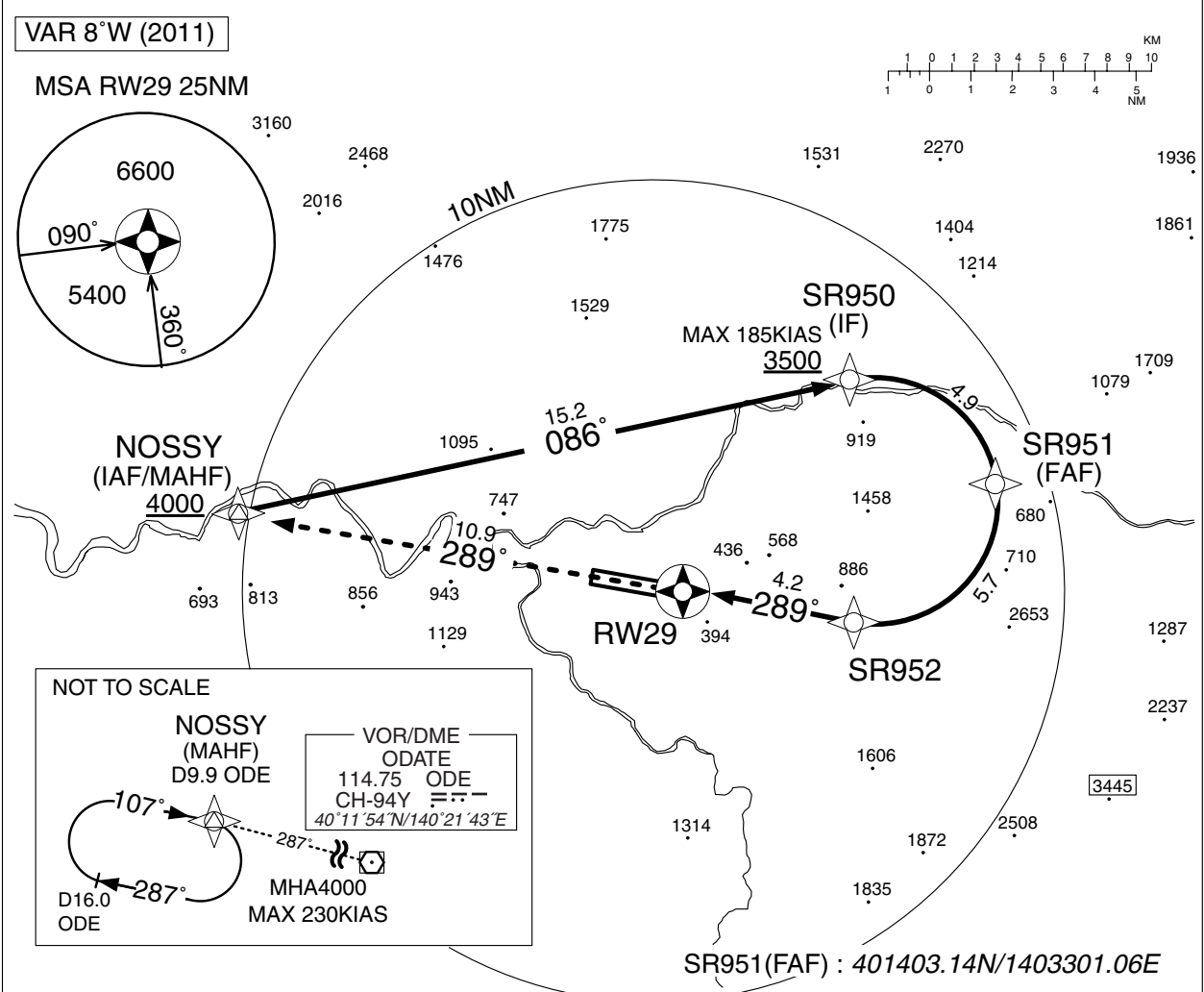
INSTRUMENT APPROACH CHART

RJSR / ODATE-NOSHIRO

➔ RNAV(RNP) Y RWY29

SAPPORO CONTROL 127.575 - 315.3 120.575 - 277.1	GNSS and RF required.	ODATE REMOTE 118.75	NO RADAR
---	-----------------------	------------------------	----------

For uncompensated Baro-VNAV systems, procedure NA below -15°C / above 45°C



MINIMA THR elev. 292 AD elev. 276		
RNP 0.30		
CAT	DA(H)	CMV
A	-	-
B	-	-
C	643(351)	1400
D	-	-

RNP AR
Special Authorization Required

INSTRUMENT APPROACH CHART

RJSR / ODATE-NOSHIRO

➔ RNAV(RNP) Y RWY29

RNAV(RNP) Y RWY29Coding Table

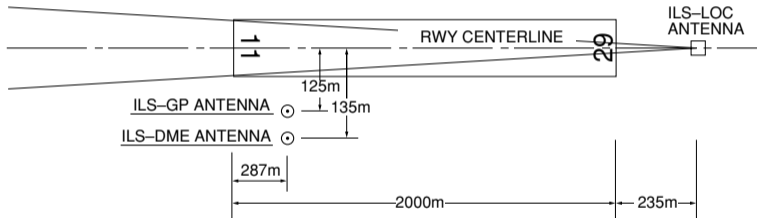
Serial Number	Path Descriptor	Waypoint Identifier	Fly Over	Course [°M(°T)]	Magnetic Variation	Distance (NM)	Turn Direction	Altitude (FT)	Speed (KIAS)	VPA/RDH (°/FT)	RNP Value
001	IF	NOSSY	—	—	-8.5	—	—	+4000	—	—	—
002	TF	SR950	—	086 (077.7)	-8.5	15.2	—	+3500	-185	—	1.0
003	RF Center: SRRF2 r=3.00NM	SR951	—	—	-8.5	4.9	R	3500	—	—	1.0
004	RF Center: SRRF2 r=3.00NM	SR952	—	—	-8.5	5.7	R	—	—	—	0.3
005	TF	RW29	Y	289 (280.1)	-8.5	4.2	—	—	—	-3.00/50	0.3
006	TF	NOSSY	—	289 (280.3)	-8.5	10.9	—	4000	—	—	1.0

Waypoint Coordinates

Waypoint Identifier	Coordinates	RF Arc Center Identifier	Coordinates
SR950	401634.48N / 1402818.75E	SRRF2	401338.11N / 1402908.01E
SR951	401403.14N / 1403301.06E		
SR952	401040.53N / 1402826.85E		
RW29	401125.10N / 1402258.78E		
NOSSY	401321.82N / 1400854.64E		

ILS for RWY11

ODATE-NOSHIRO AP



- REMARKS :
- | | |
|-------------------------|--------------|
| 1. ILS-LOC beam (BRG) | 110° |
| 2. ILS-GP Angle | 3.0° |
| 3. HGT of ILS REF datum | 16.5m(54ft) |
| 4. ELEV of ILS-DME | 84.86(278ft) |

B767 型機用の滑走路 180° 転回実施要領

1. 滑走路中心線からターニングパッド中心線標識に従って進行する。
2. 転回灯 1 が一直線に見えるように進行し、転回灯 2 が一直線に見えたとき転回を開始する。転回時は MAX STEERING ANGLE を使用する。

180° turn procedure on RWY for B767 aircraft

1. Proceed along the RWY Center Line to the starting point of the RWY Turn Pad Center Line Marking ; then
2. Proceed along the RWY Turn Pad Center Line Marking to see the Turning Point Indicator Light 1 on a straight line, then commence turn at the spot where you (pilot) can see the Turning Point Indicator Light 2 on a straight line at an angle of 9 o'clock. When turning, take MAX STEERING ANGLE.

ODATE-NOSHIRO AP