

STANDARD DEPARTURE CHART -INSTRUMENT

RJSO/OMINATO

SID

OMINATO REVERSAL ONE DEPARTURE

By TACAN;

RWY 04 : Climb RWY HDG to 200FT (400FT for fixed-wing ACFT), turn right,....

RWY 22 : Turn left,....

....climb via OMT R-200 to 3,000FT or above, then turn left and proceed to OMT TACAN within OMT 10DME.

Cross OMT TACAN at or above 5,000FT.

By NDB;

RWY 04 : Climb RWY HDG to 200FT (400FT for fixed-wing ACFT), turn right,....

RWY 22 : Turn left,....

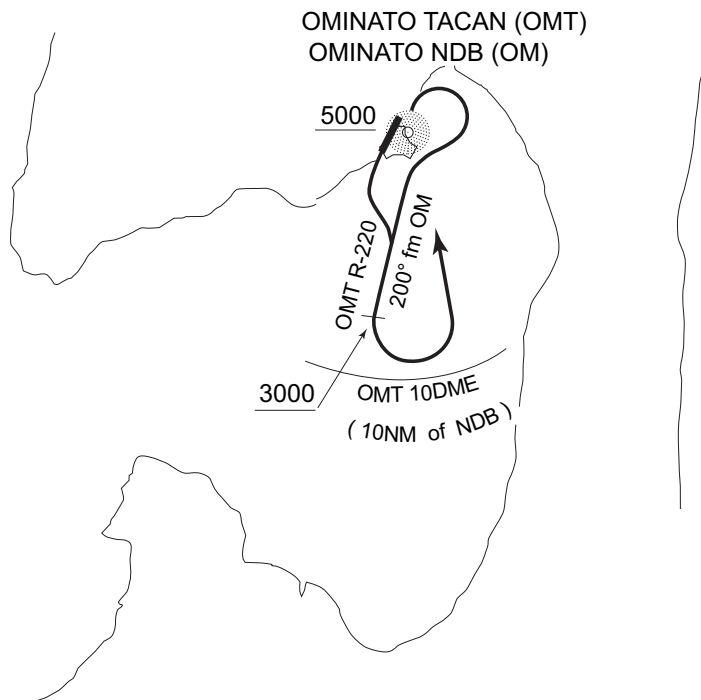
....climb via 200 DEG from OM NDB to 3,000FT or above, then turn left and proceed to OM NDB within 10NM of OM NDB.

Cross OM NDB at or above 5,000FT.

Note : Following climb gradient should be maintained until 3,000FT.

Speed (Knots)	60	90	120	150	180	210
Rate (Feet / Min)	300	450	600	750	900	1050

OMINATO REVERSAL ONE DEPARTURE



STANDARD DEPARTURE CHART -INSTRUMENT

RJSO/OMINATO

SID

MUTSU ONE DEPARTURE

RWY 04 : Climb RWY HDG to 200FT (400FT for fixed-wing ACFT), turn right,....

RWY 22 : Turn left,....

...climb via OMT R-200 to MUTSU.

Cross MUTSU at or above 4,000FT.

MISAWA TRANSITION

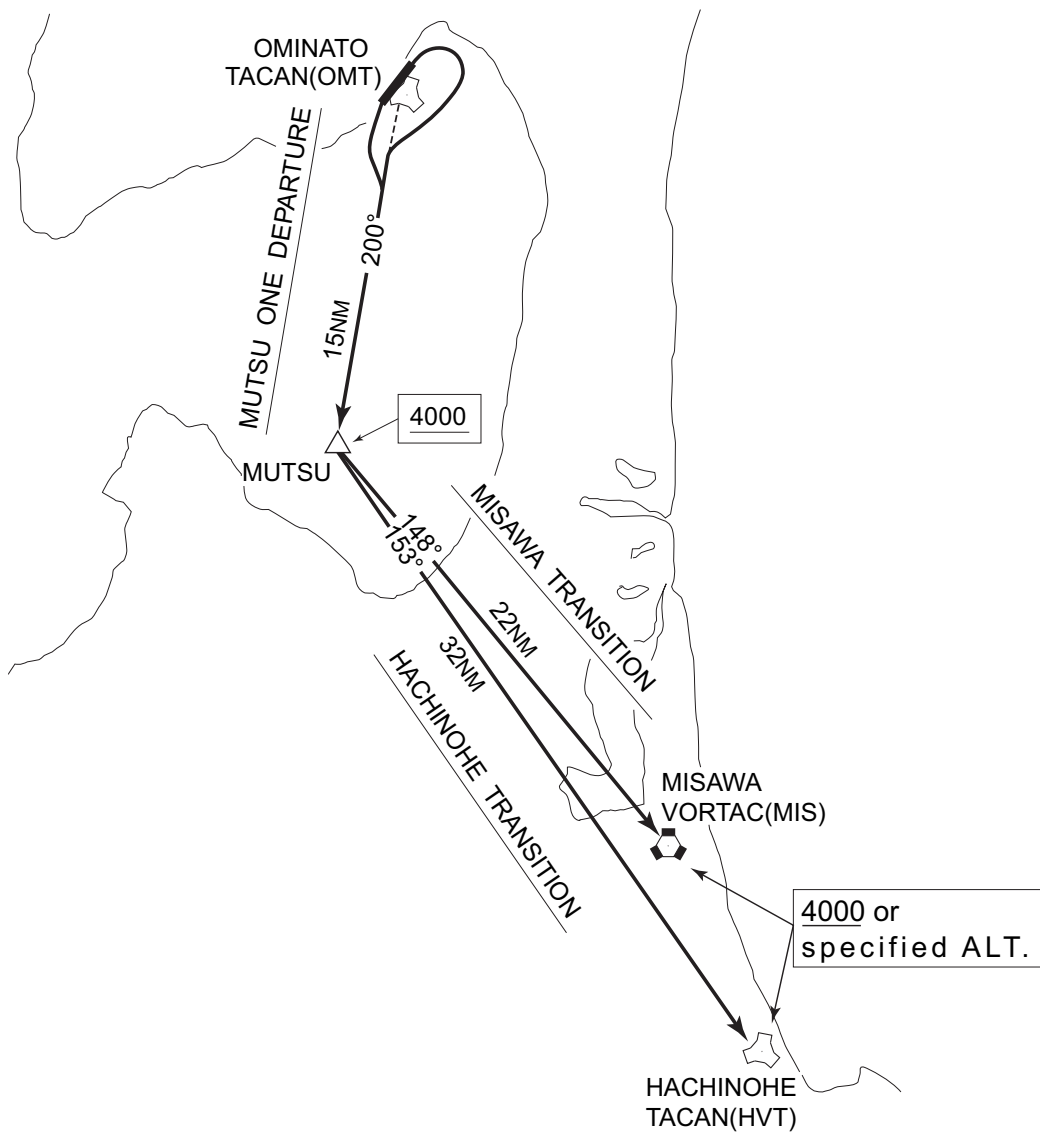
After MUTSU, proceed via MIS R-328 to MIS VORTAC.

Cross MIS VORTAC at or above 4,000FT or specified altitude.

HACHINOHE TRANSITION

After MUTSU, proceed via HVT R-333 to HVT TACAN.

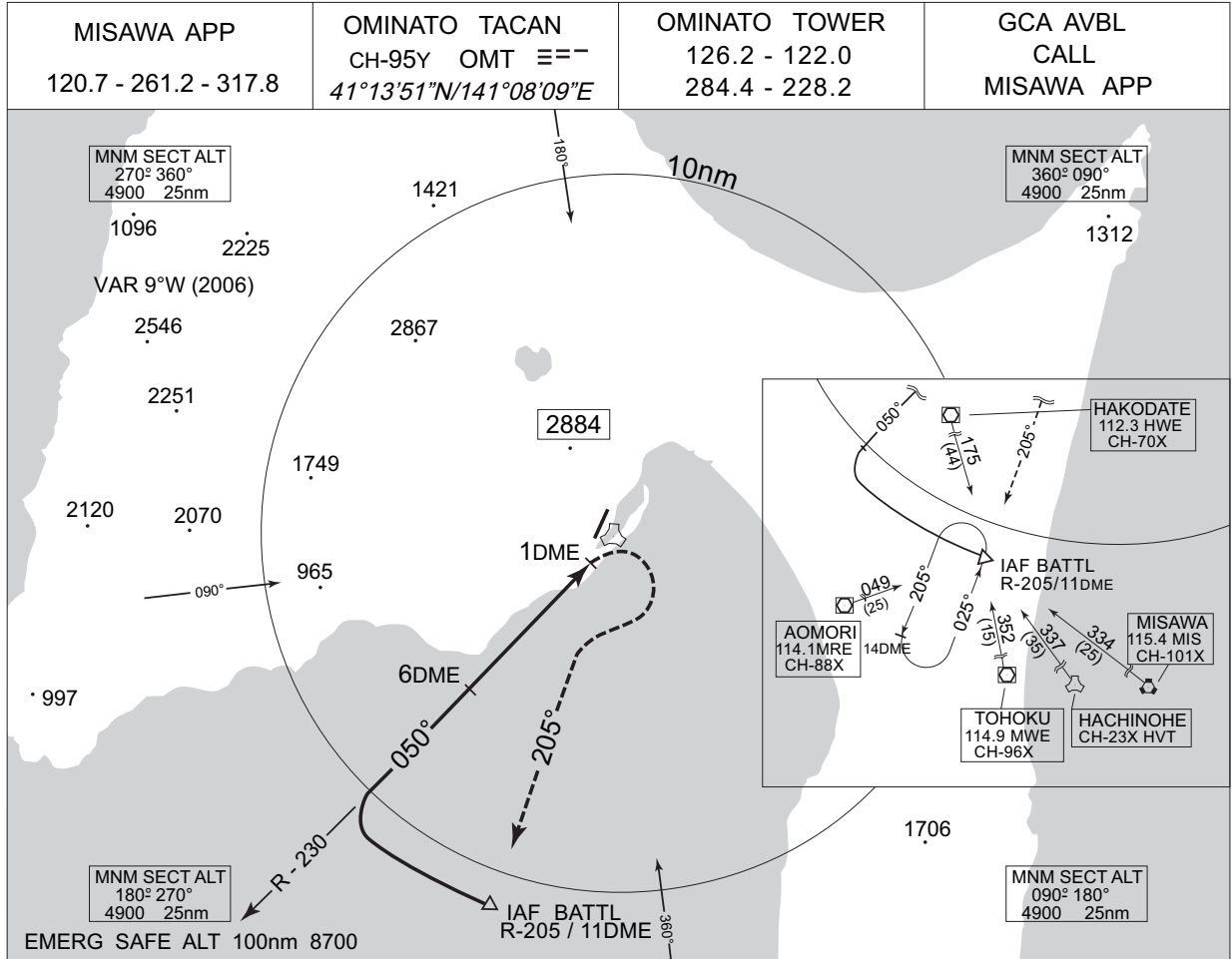
Cross HVT TACAN at or above 4,000FT or specified altitude.



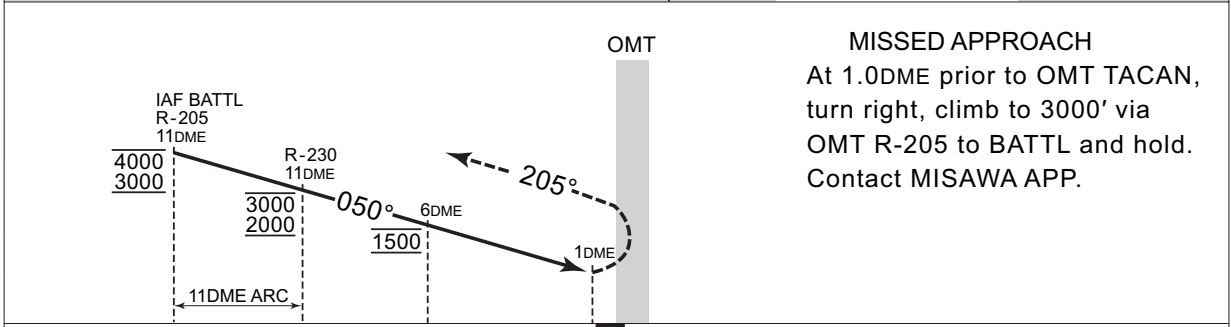
INSTRUMENT APPROACH CHART

RJSO / OMINATO

TACAN A



EMERG SAFE ALT 100nm 8700



MISSED APPROACH
At 1.0DME prior to OMT TACAN,
turn right, climb to 3000' via
OMT R-205 to BATTL and hold.
Contact MISAWA APP.

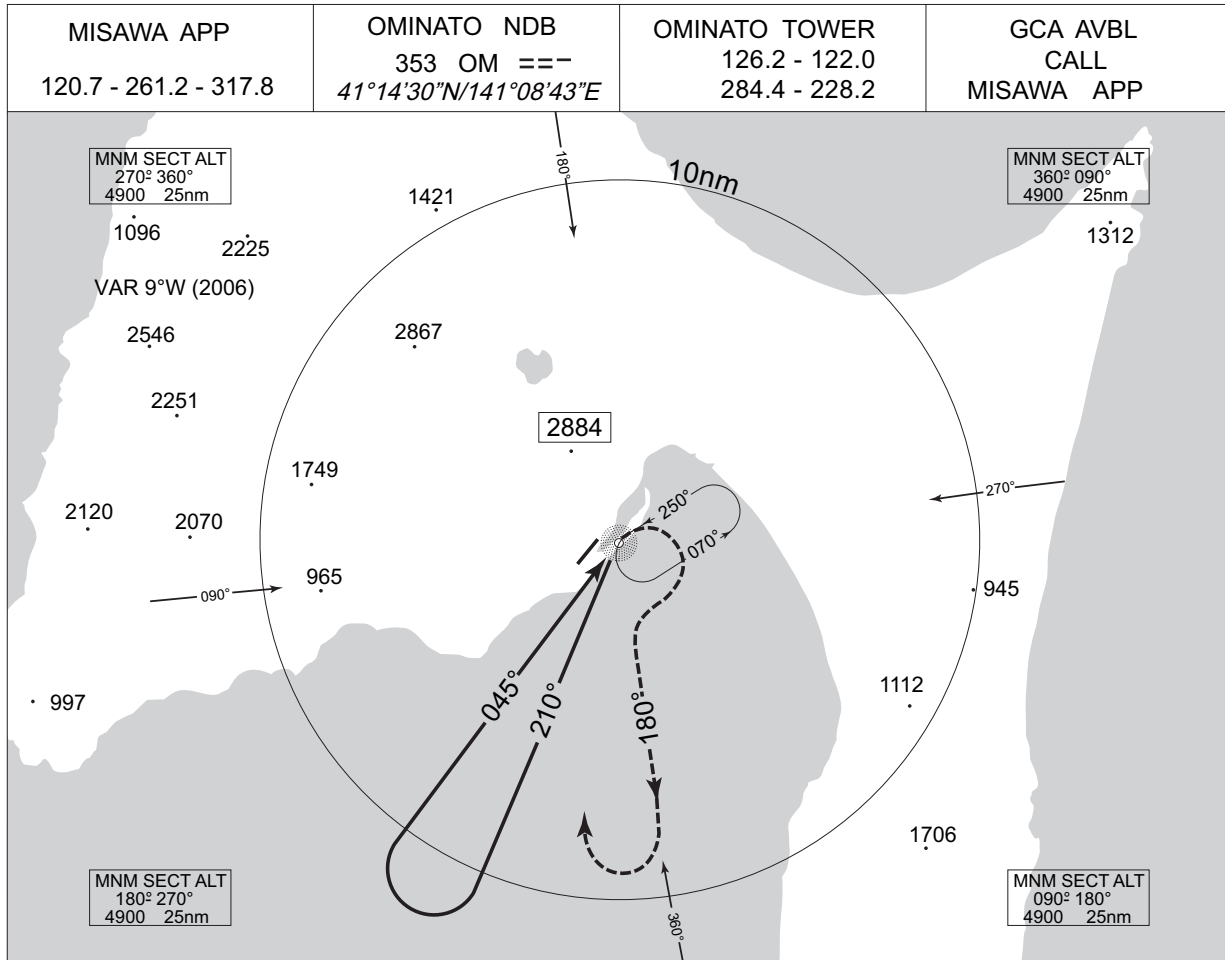
MINIMA		AD elev. 24
CAT	CIRCLING	
	MDA(H)	VIS
A	600 (576)	1600
B		
C	-	-
D	-	-

Circling to East side of RWY only.

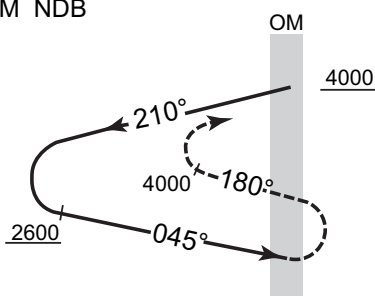
INSTRUMENT APPROACH CHART

RJSO / OMINATO

ADF B



Remain within 14nm of OM NDB



MISSED APPROACH
 At OM NDB, turn right, climb to 4000' via 180° from OM NDB, then turn right to OM NDB within 10nm of OM NDB. Contact MISAWA APP.

MINIMA		AD elev. 24
CAT	CIRCLING	
	MDA(H)	VIS
A	900 (876)	1600
B		
C	-	-
D	-	-

Circling to East side of RWY only.