

STANDARD DEPARTURE CHART -INSTRUMENT

RJSI / HANAMAKI

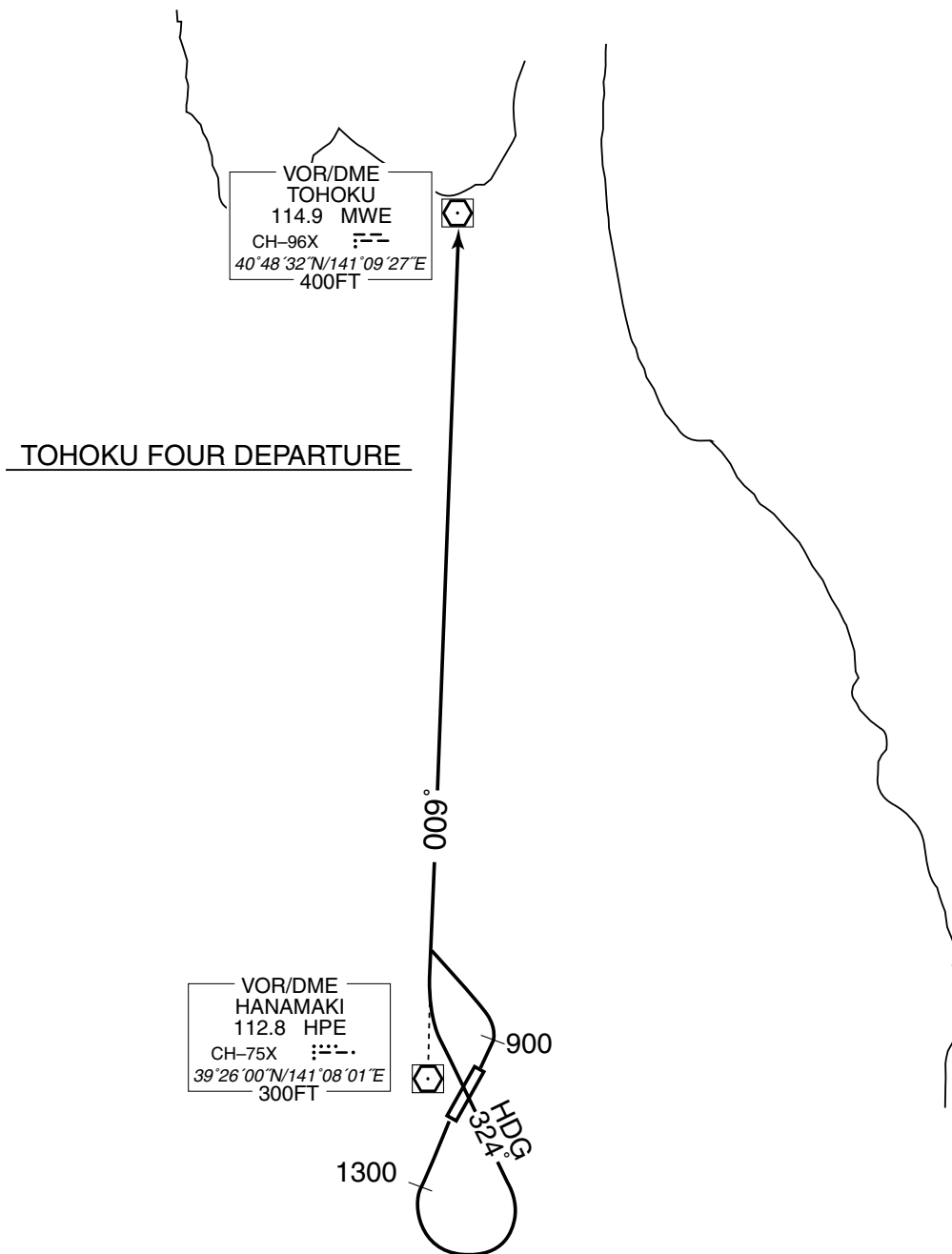
SID

TOHOKU FOUR DEPARTURE

RWY 02 : Climb RWY HDG to 900FT, turn left...

RWY 20 : Climb RWY HDG to 1300FT, turn left HDG 324° ...

...to intercept and proceed via HPE R009 to MWE VOR/DME.



STANDARD DEPARTURE CHART -INSTRUMENT

RJSI / HANAMAKI

SID

NIIGATA FOUR DEPARTURE

RWY 02 : Climb RWY HDG to HPE 3.5 DME, turn right...

RWY 20 : Climb RWY HDG to HPE 3.5 DME, turn left...

...proceed to HPE VOR/DME, via HPE R236 to GTC VORTAC.

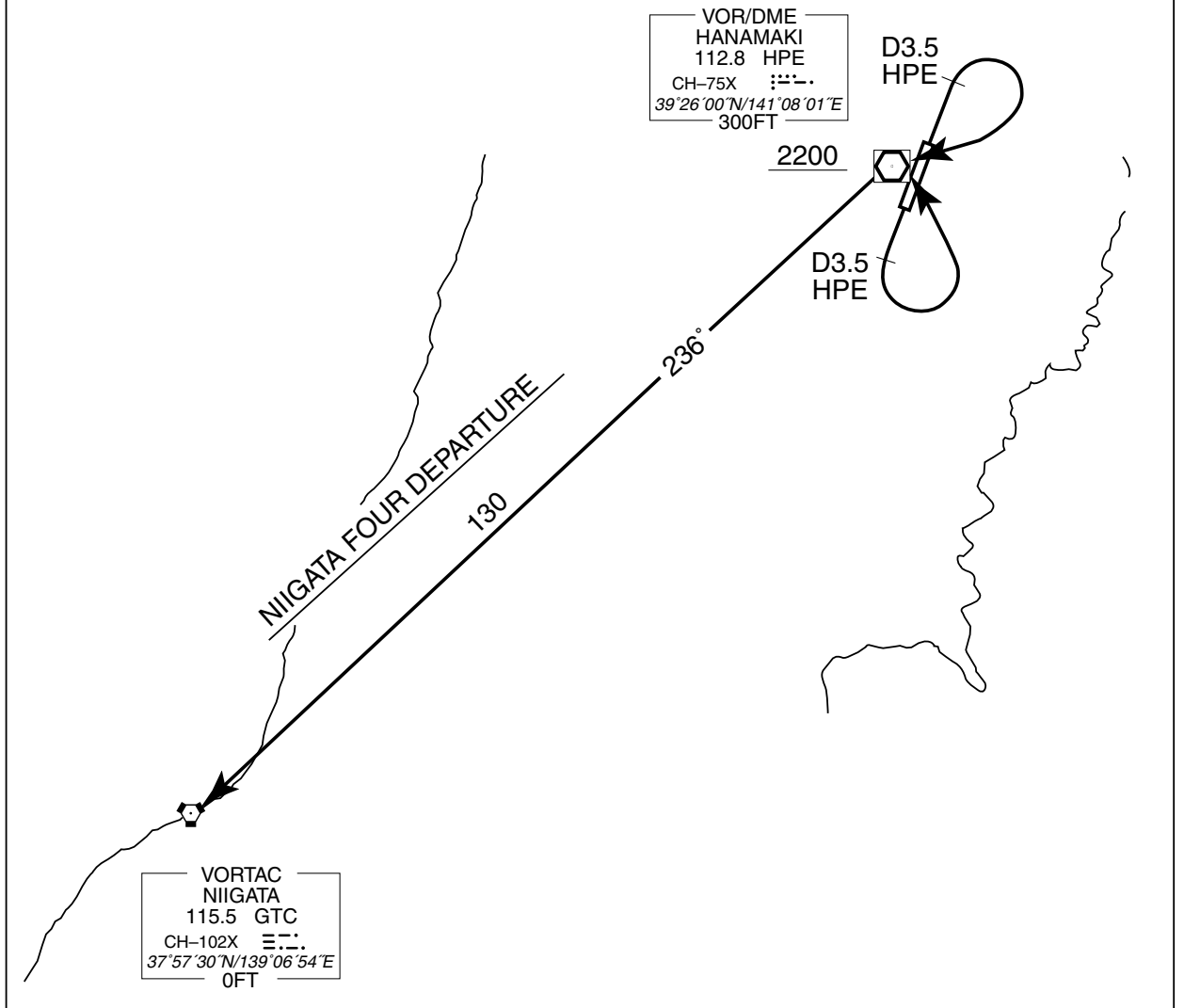
Cross HPE VOR/DME at or above 2200 FT.

Note RWY02 : 4.5% climb gradient required up to 2400FT.

OBST ALT 1641FT located at 4.1NM 091° FM end of RWY02.

RWY20 : 3.9% climb gradient required up to 1100FT.

OBST ALT 722FT located at 2.8NM 166° FM end of RWY20.



STANDARD DEPARTURE CHART -INSTRUMENT

RJSI / HANAMAKI

SID

HANAMAKI REVERSAL TWO DEPARTURE

RWY 02 : Climb RWY HDG to 700FT, via HPE R022 to 6.0 DME, turn right...

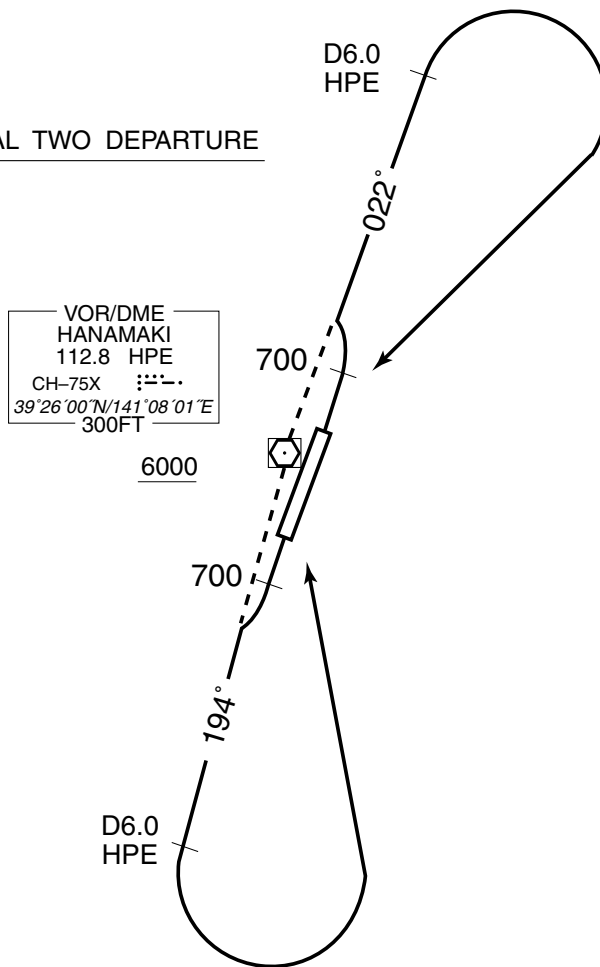
RWY 20 : Climb RWY HDG to 700FT, via HPE R194 to 6.0 DME, turn left...
...proceed to HPE VOR/DME.

Cross HPE VOR/DME at or above 6000FT.

Note RWY02 : 5.0% climb gradient required up to 3200FT.

OBST ALT 2691FT located at 9.1NM 058° FM end of RWY02.

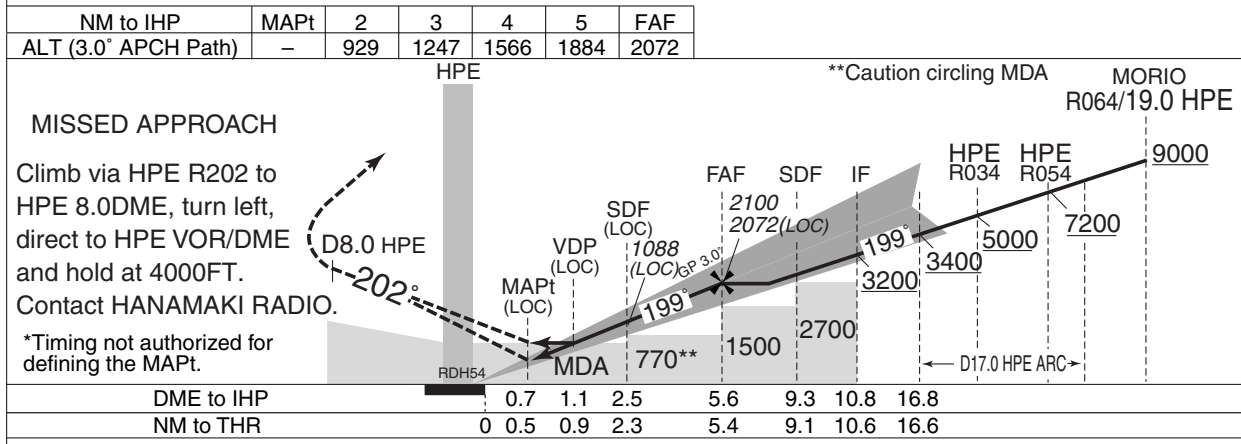
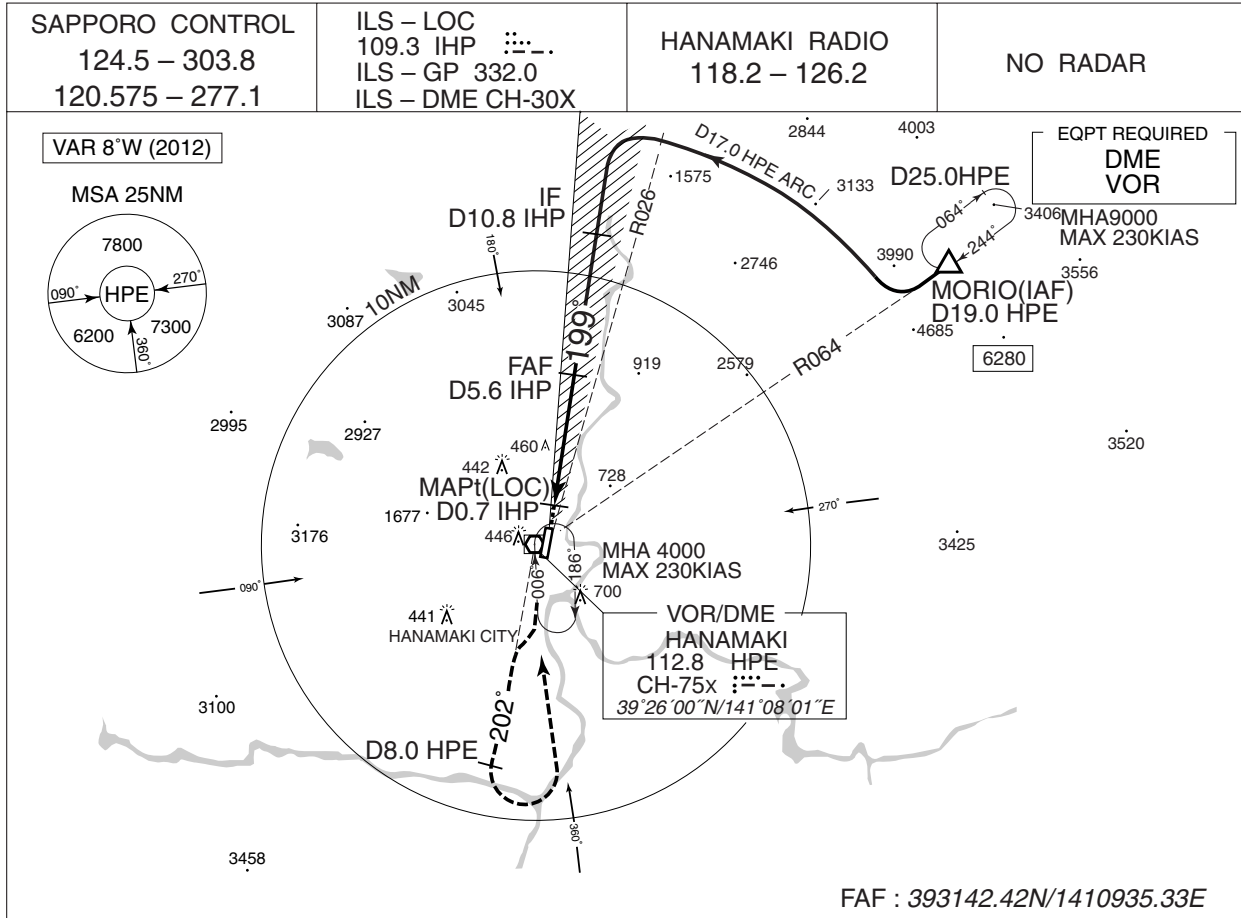
HANAMAKI REVERSAL TWO DEPARTURE



INSTRUMENT APPROACH CHART

RJSI / HANAMAKI

ILS Y or LOC Y RWY20



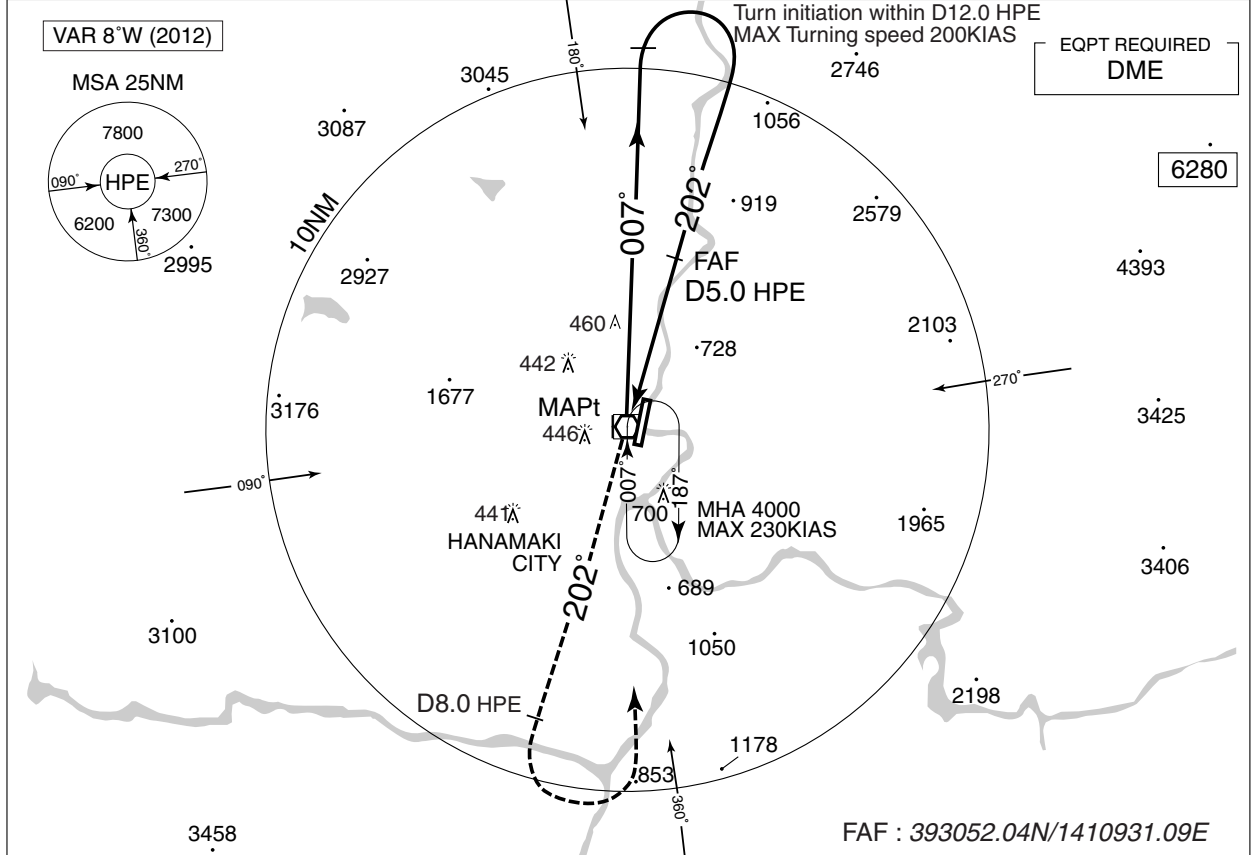
MINIMA		THR elev. 298		AD elev. 294		
CAT	CAT I		LOC		CIRCLING	
	DA(H)	RVR/CMV	MDA(H)	RVR/CMV	MDA(H)	VIS
A	498 (200)	550	640 (346)	900	760 (466)	1600
B				1000	860 (566)	
C				1000 (706)	3200	
D				1400		

INSTRUMENT APPROACH CHART

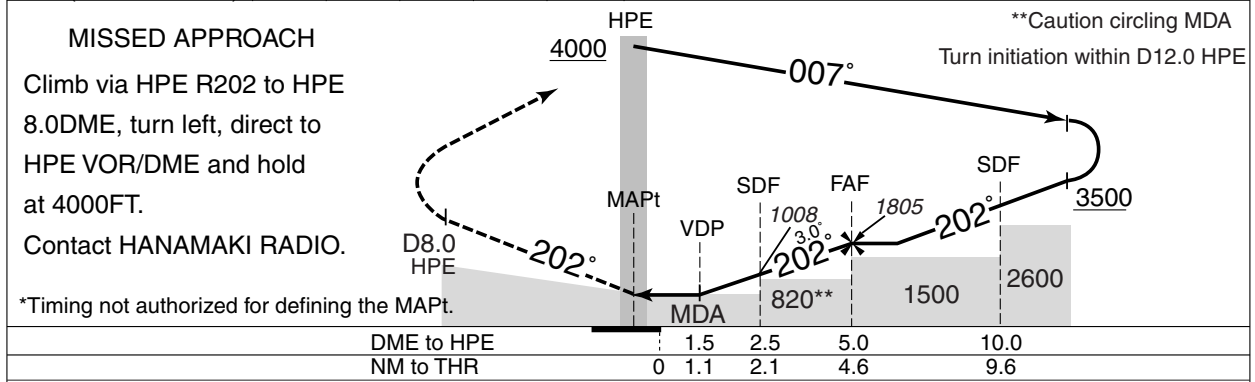
RJSI / HANAMAKI

VOR RWY20

SAPPORO CONTROL 124.5 – 303.8 120.575 – 277.1	HANAMAKI VOR/DME 112.8 HPE CH-75X 39°26'00"N/141°08'01"E	HANAMAKI RADIO 118.2 – 126.2	NO RADAR
---	---	---------------------------------	----------



NM to HPE	MAPt	2	3	4	FAF
ALT (3.0° APCH Path)	-	849	1168	1486	1805



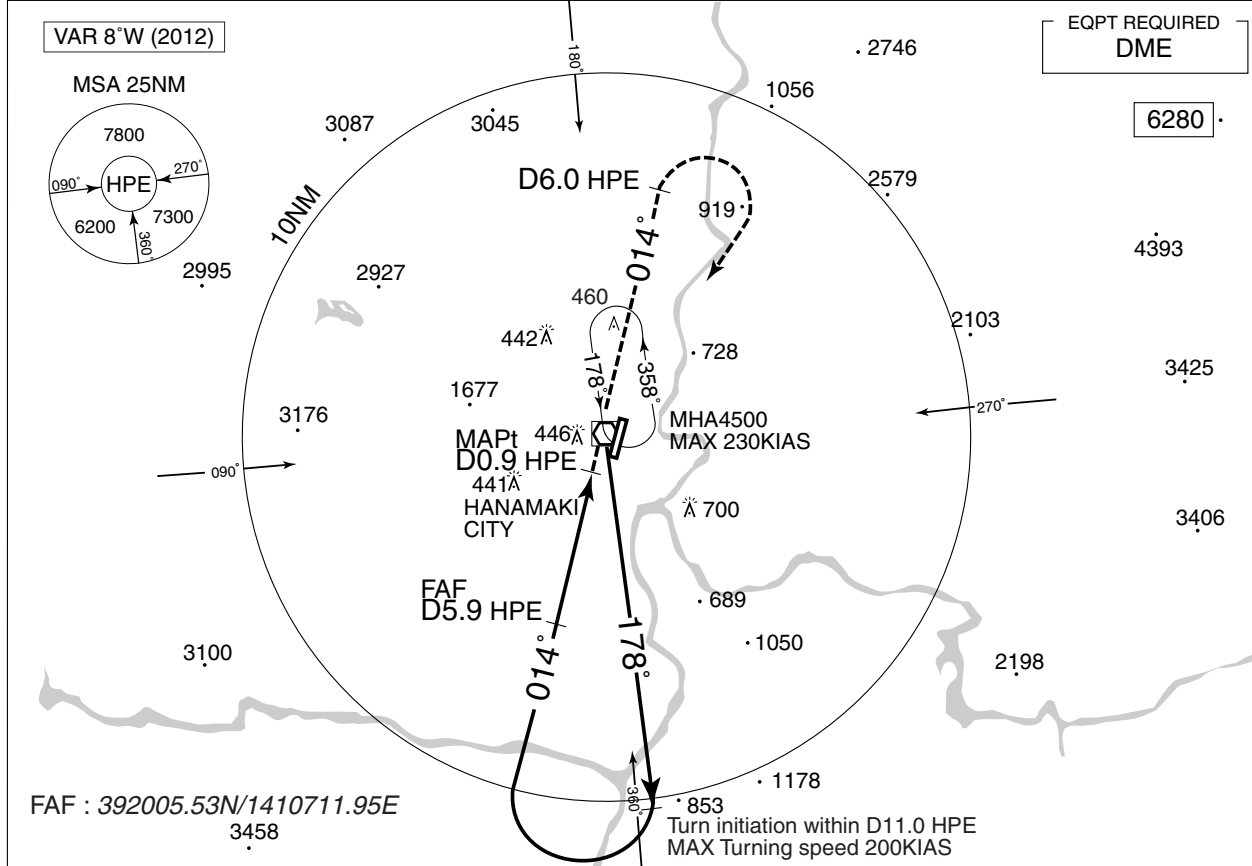
MINIMA		THR elev. 298	AD elev. 294	
CAT	MDA(H)	RVR/ CMV	CIRCLING	
			MDA(H)	VIS
A	690 (396)	900	760 (466)	1600
B			860 (566)	
C			1000 (706)	2400
D				1400

INSTRUMENT APPROACH CHART

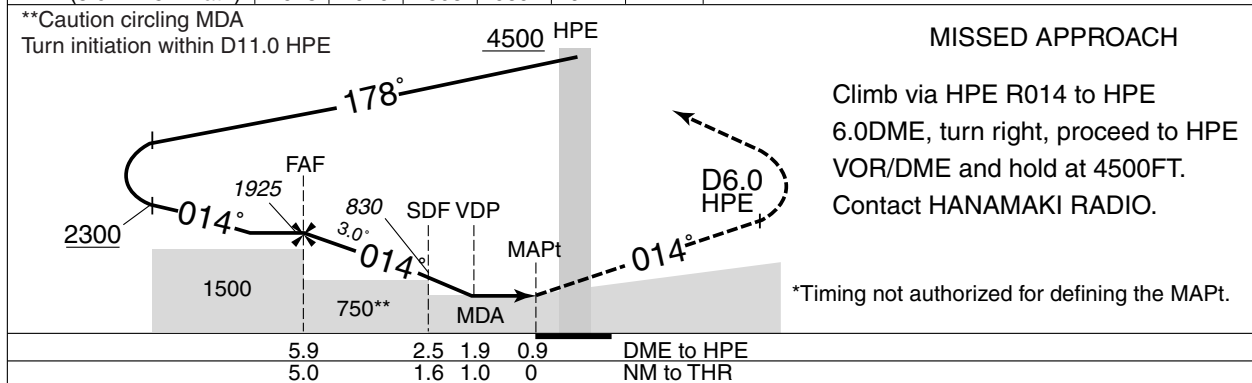
RJSI / HANAMAKI

VOR RWY02

SAPPORO CONTROL 124.5 – 303.8 120.575 – 277.1	HANAMAKI VOR/DME 112.8 HPE CH-75X 39°26'00"N/141°08'01"E	HANAMAKI RADIO 118.2 – 126.2	NO RADAR
---	---	---------------------------------	----------



NM to HPE	FAF	5	4	3	2	MAPt
ALT (3.0° APCH Path)	1925	1626	1308	989	671	-



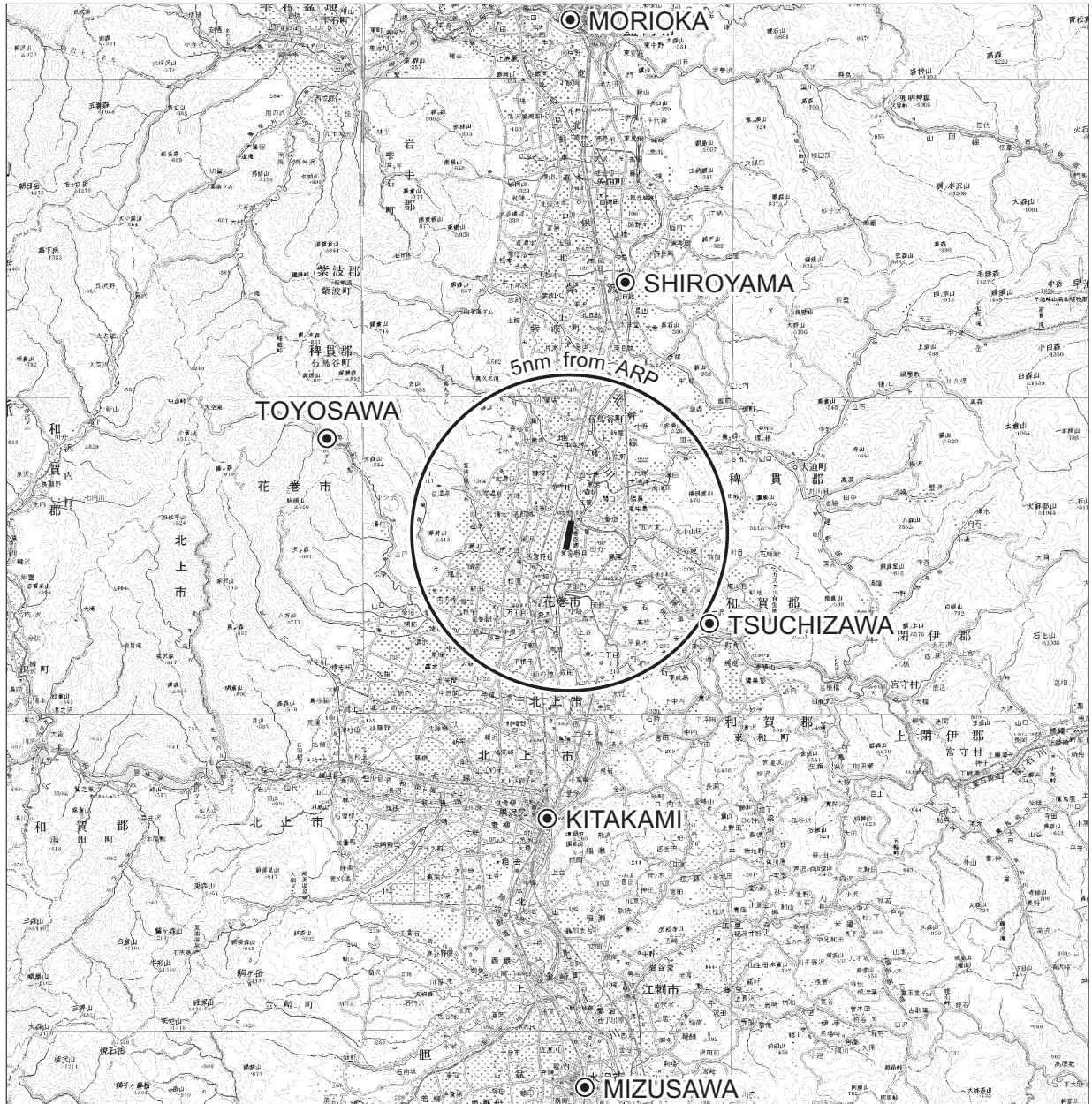
Missed APCH climb gradient MNM 3.6%

MINIMA		THR elev. 283		AD elev. 294	
CAT	CIRCLING				
	MDA(H)	CMV	MDA(H)	VIS	
A		1200	760 (466)	1600	
B	640 (357)	1300	860 (566)		
C		1400	1000 (706)		2400
D	650 (367)	1600			3200

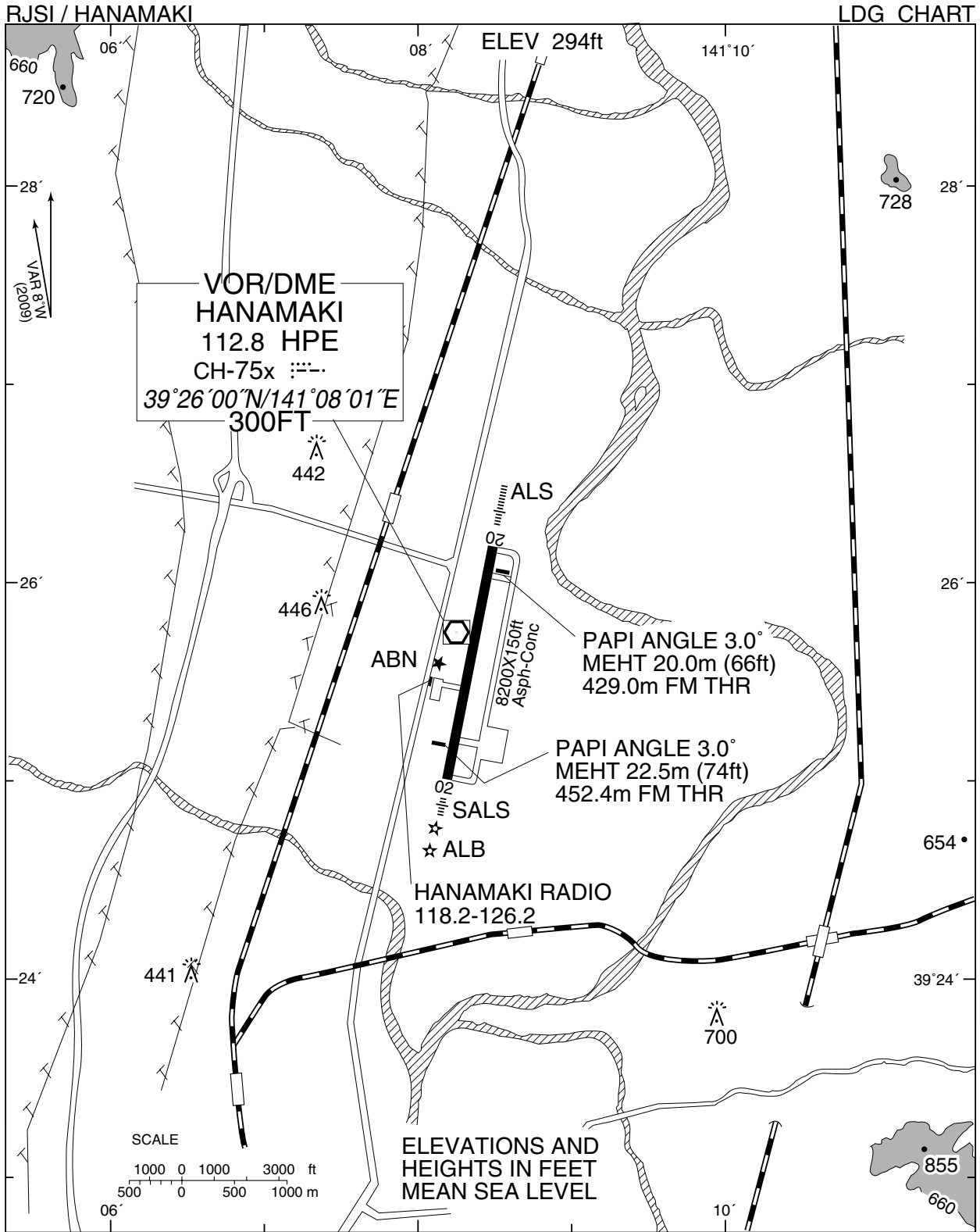
MINIMA with Missed APCH climb gradient of 2.5% are not established.

RJSI / HANAMAKI

Visual REP



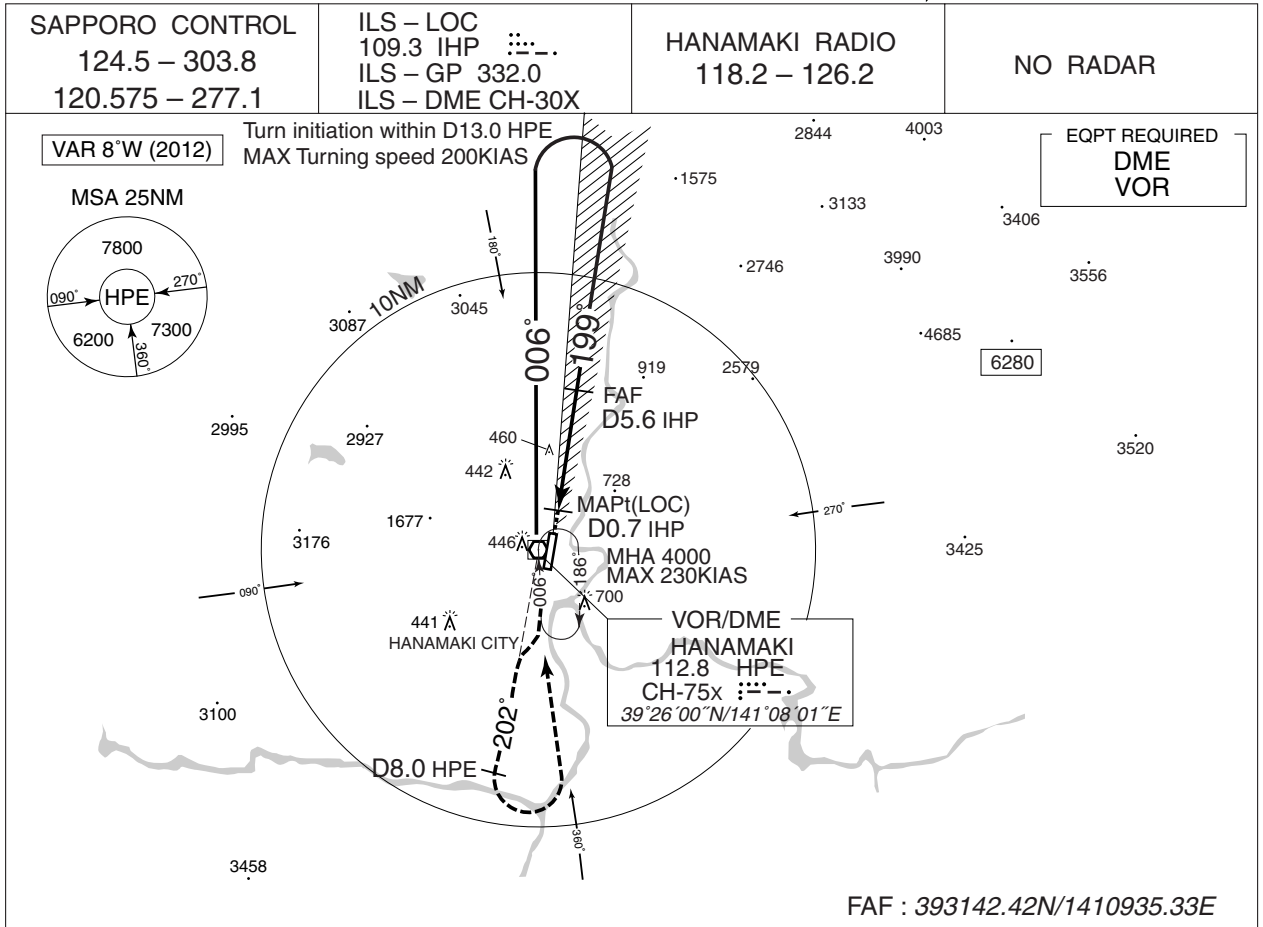
Call sign	BRG / DIST from ARP	Remarks
盛岡 Morioka	006°/16.5NM	駅 Station
城山 Shiroyama	018°/ 8.4NM	城跡 The site of a castle
豊沢 Toyosawa	301°/ 8.0NM	豊沢湖ダム Dam
土沢 Tsuchisawa	127°/ 5.1NM	駅 Station
北上 Kitakami	192°/ 8.9NM	駅 Station
水沢 Mizusawa	186°/17.5NM	駅 Station



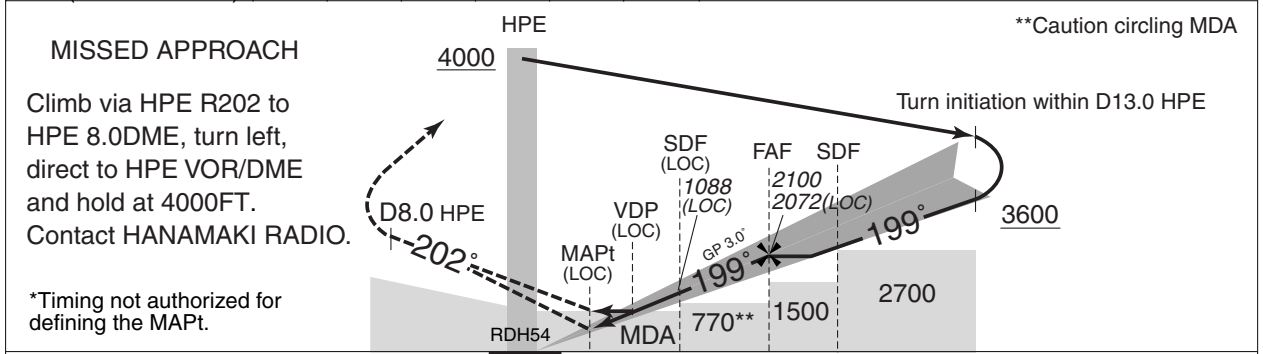
INSTRUMENT APPROACH CHART

RJSI / HANAMAKI

➔ ILS Z or LOC Z RWY20



NM to IHP	MAPt	2	3	4	5	FAF
ALT (3.0° APCH Path)	–	929	1247	1566	1884	2072

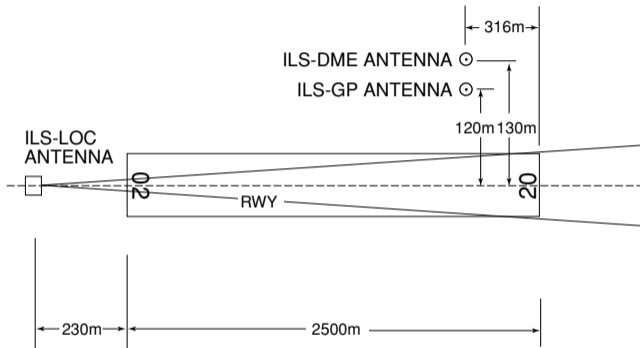


DME to IHP	0.7	1.1	2.5	5.6	9.3
NM to THR	0.05	0.9	2.3	5.4	9.1

MINIMA		THR elev. 298	AD elev. 294			
CAT	CAT I		LOC		CIRCLING	
	DA(H)	RVR/CMV	MDA(H)	RVR/CMV	MDA(H)	VIS
A	498 (200)	550	640 (346)	900	760 (466)	1600
B				1000	860 (566)	
C				1000 (706)	2400	
D				1400	3200	

ILS for RWY20

HANAMAKI AP



REMARKS :	1.LOC beam BRG(MAG)	199°
	2.HGT of ILS REF datum	16.4m(54ft)
	3.GP Angle	3.0°
	4.ELEV of ILS-DME	95.6m(314ft)