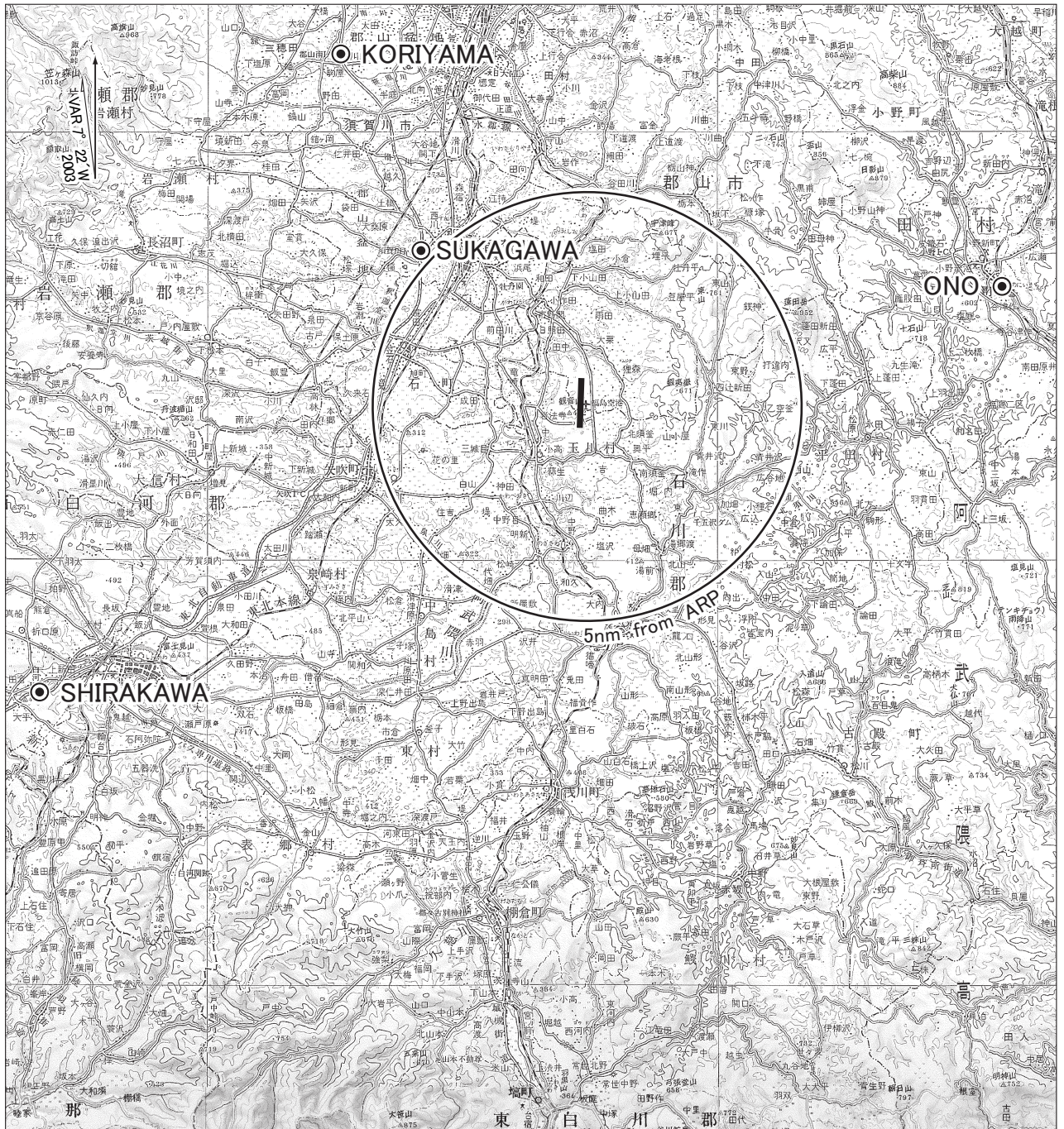


RJSF / FUKUSHIMA

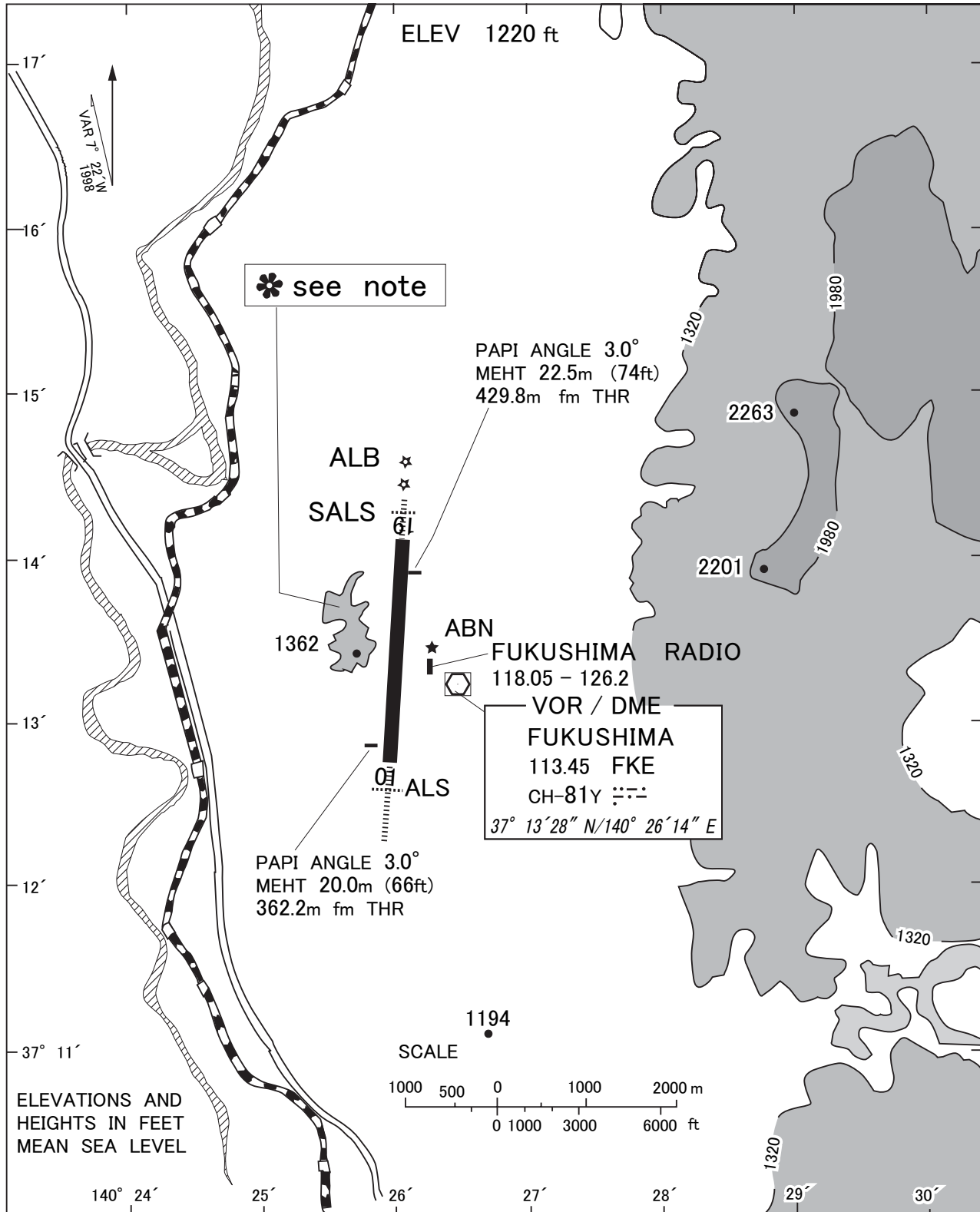
Visual REP



Call sign	BRG / DIST from ARP	Remarks
小野 Ono	081° /10.3NM	JR小野新町駅 Station
白河 Shirakawa	249° /14.2NM	白河IC Interchange
須賀川 Sukagawa	322° /5.2NM	須賀川IC Interchange
郡山 Koriyama	333° /10.0NM	郡山南IC Interchange

RJSF / FUKUSHIMA

LDG CHART



Note : RWY may be invisible on down-wind leg of westside traffic pattern depending on altitude.

STANDARD DEPARTURE CHART-INSTRUMENT

RJSF / FUKUSHIMA

➔ SID

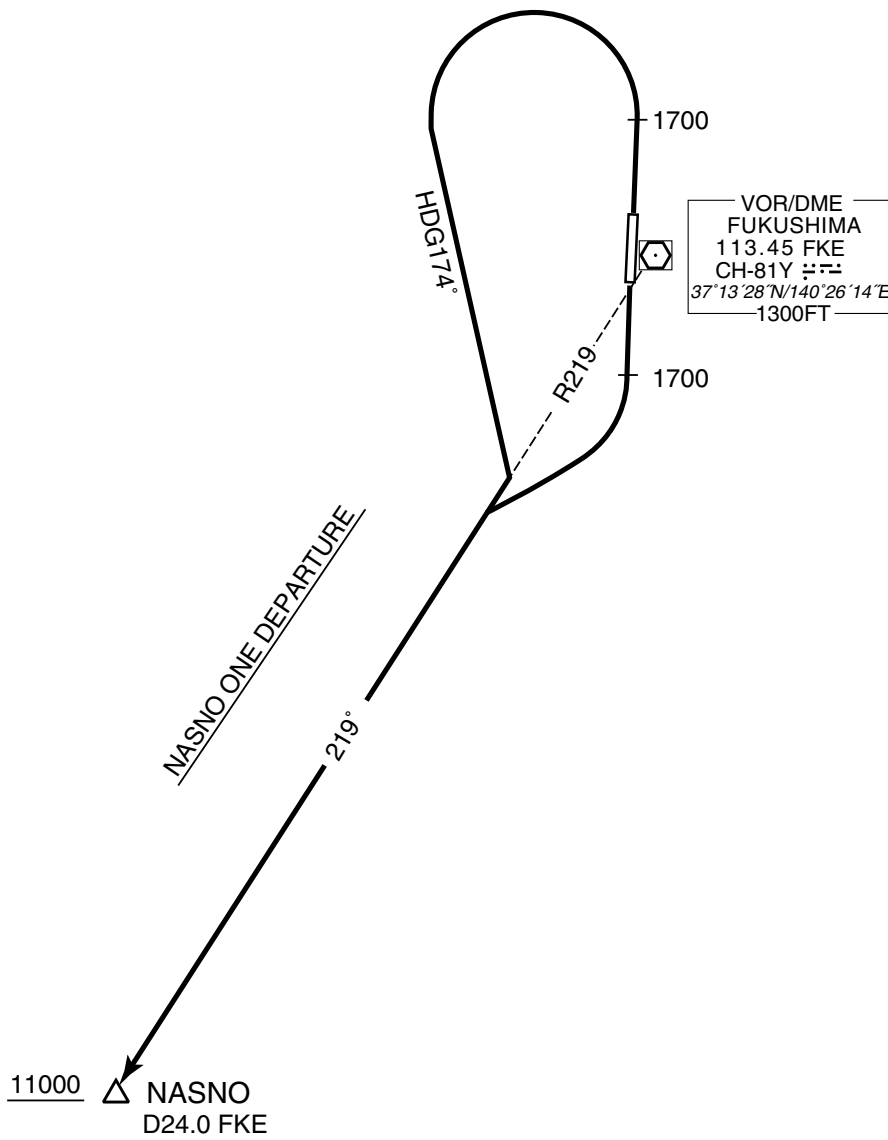
NASNO ONE DEPARTURE

RWY01 : Climb RWY HDG to 1700FT, turn left HDG174° to intercept and proceed...

RWY19 : Climb RWY HDG to 1700FT, turn right,...

...via FKE R219 to NASNO.

Cross NASNO at or above 11000FT.



STANDARD DEPARTURE CHART-INSTRUMENT

RJSF / FUKUSHIMA

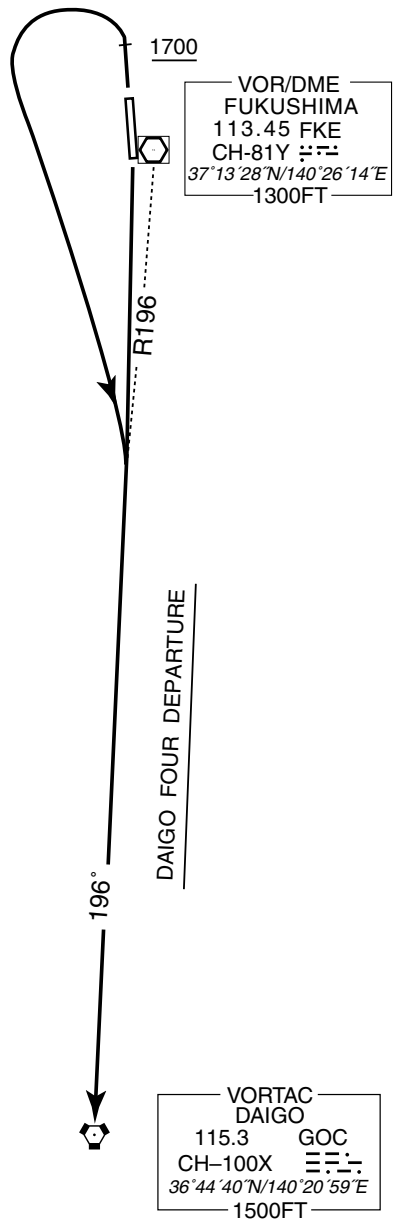
SID

DAIGO FOUR DEPARTURE

RWY01 : Climb RWY HDG to 1700FT, turn left, ...

RWY19 : Climb RWY HDG to intercept and proceed...

... via FKE R196 to GOC VORTAC.



STANDARD DEPARTURE CHART-INSTRUMENT

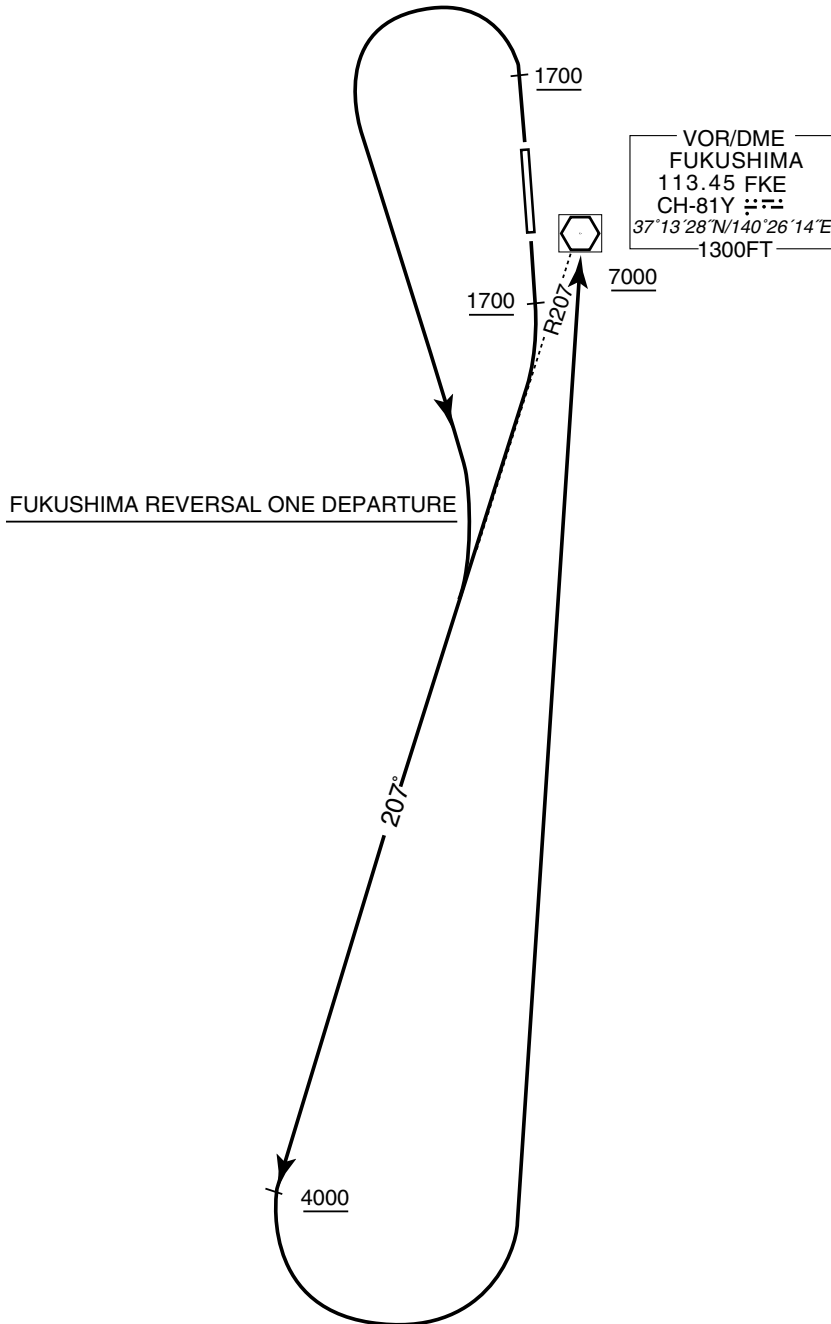
RJSF / FUKUSHIMA

SID

FUKUSHIMA REVERSAL ONE DEPARTURE

RWY 01 : Climb RWY HDG to 1700FT, turn left, ...
RWY 19 : Climb RWY HDG to 1700FT, turn right, ...

... via FKE R207 to 4000FT, turn left, direct to FKE VOR/DME.
Cross FKE VOR/DME at or above 7000FT.



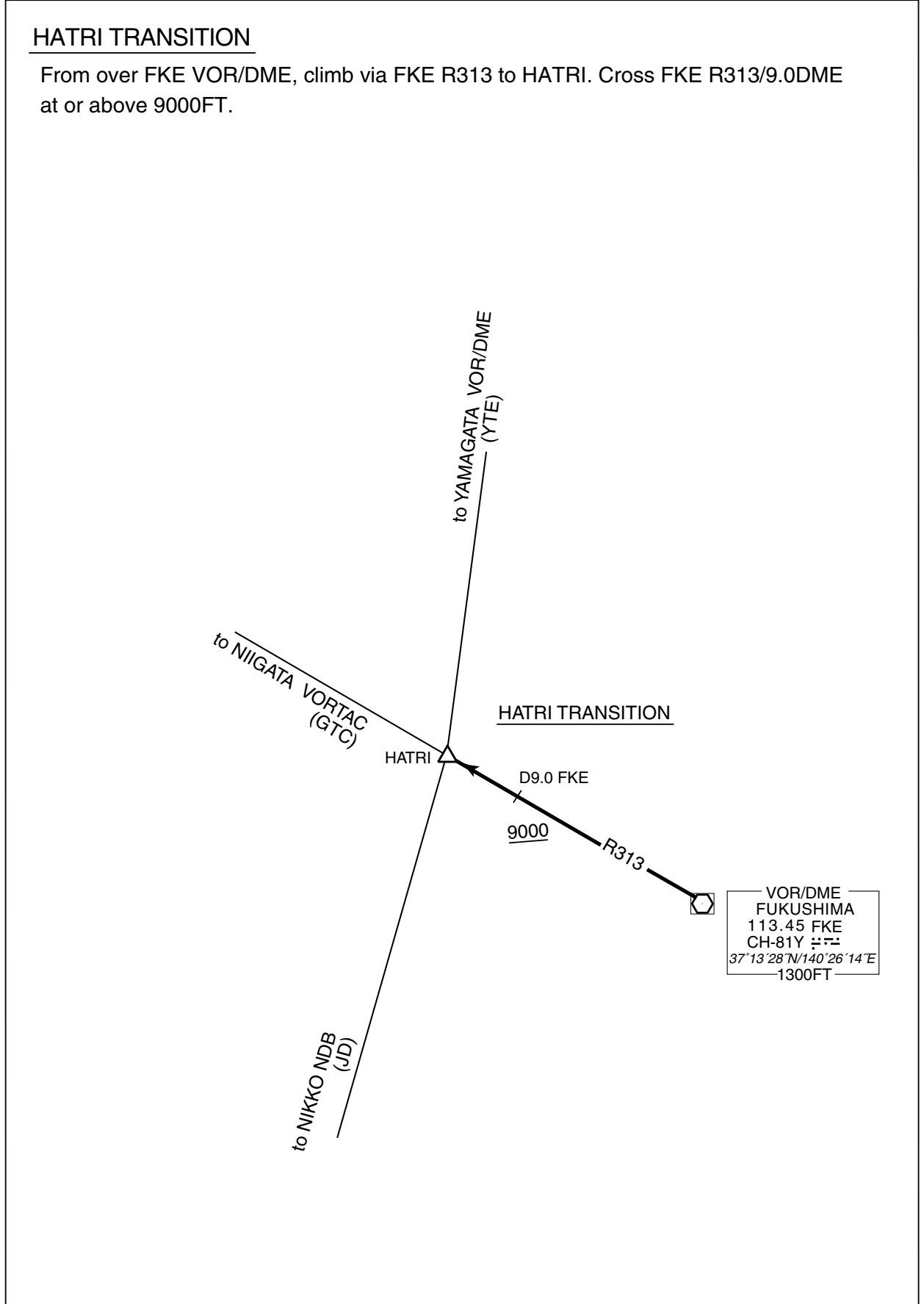
STANDARD DEPARTURE CHART-INSTRUMENT

RJSF / FUKUSHIMA

TRANSITION

HATRI TRANSITION

From over FKE VOR/DME, climb via FKE R313 to HATRI. Cross FKE R313/9.0DME at or above 9000FT.



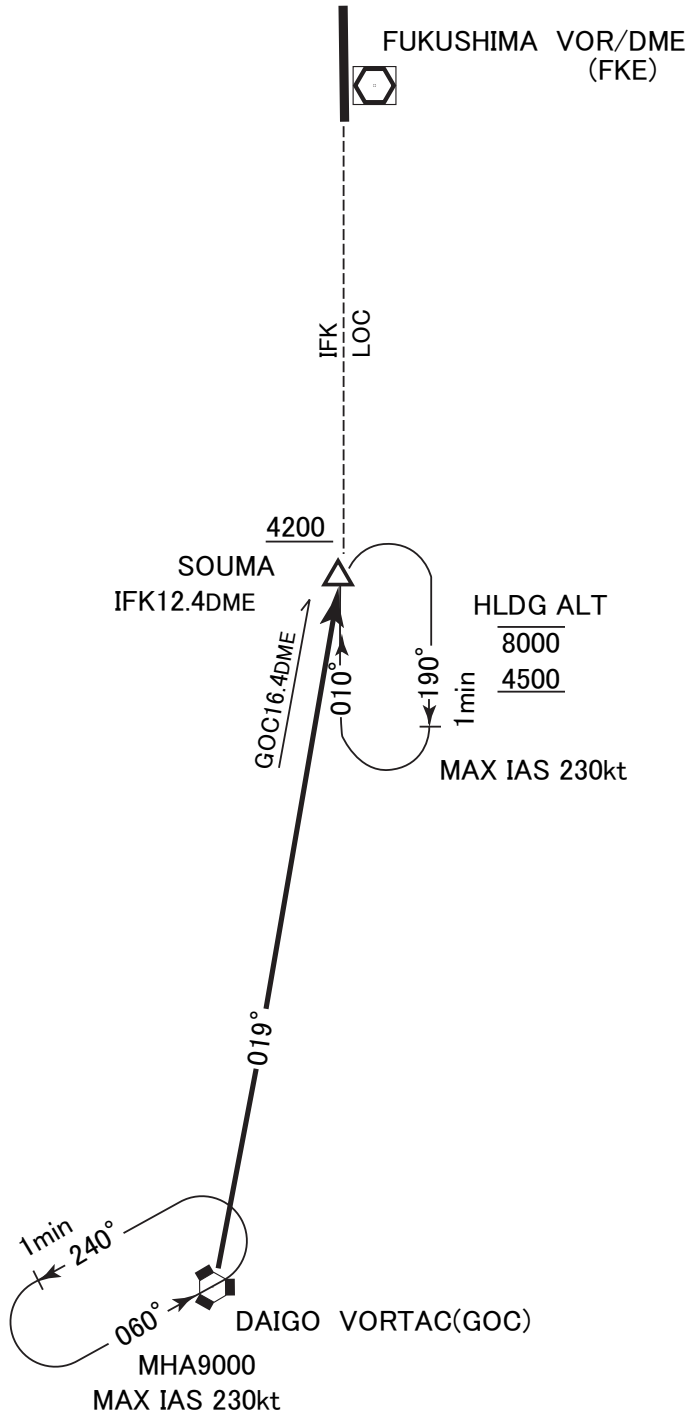
STANDARD ARRIVAL CHART-INSTRUMENT

RJSF / FUKUSHIMA

STAR

DAIGO ARRIVAL

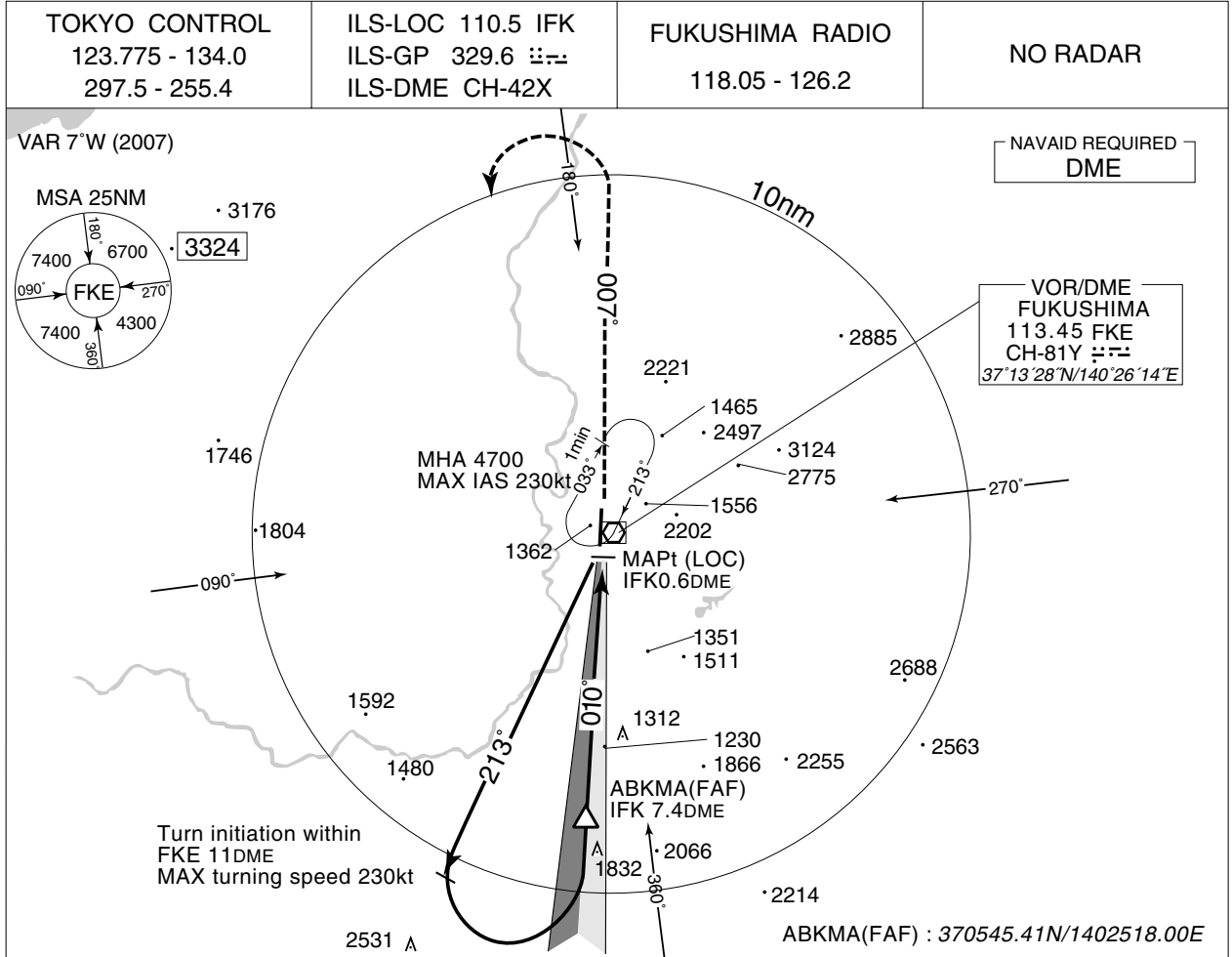
From over GOC VORTAC, via GOC R-019 to SOUMA.
Cross SOUMA at or above 4,200ft.



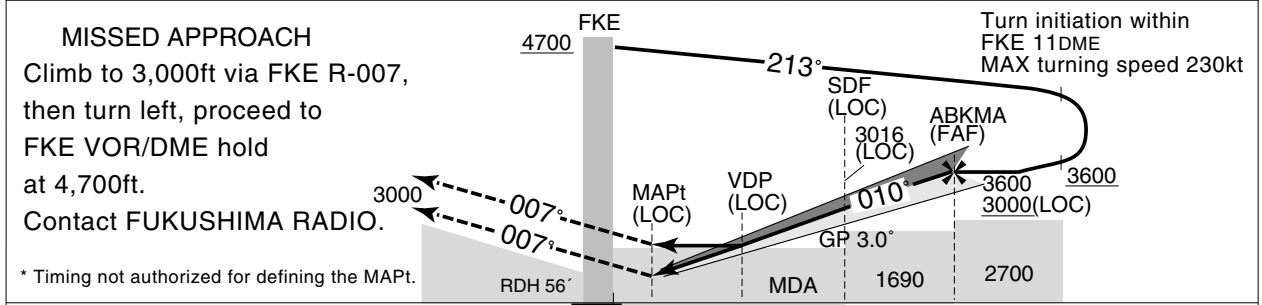
INSTRUMENT APPROACH CHART

RJSF / FUKUSHIMA

ILS Z or LOC Z RWY 01



	MAPt	2	3	4	5	SDF	6	7	FAF	NM to IFK
	-	1837	2156	2474	2793	3016	3111	3430	3545	ALT(3.0° APCH Path)



	DME to IFK	0.6	1.2	5.7	7.4
	NM to RWY01	0	0.5	1.1	5.5

Missed APCH climb gradient MNM 4.0%

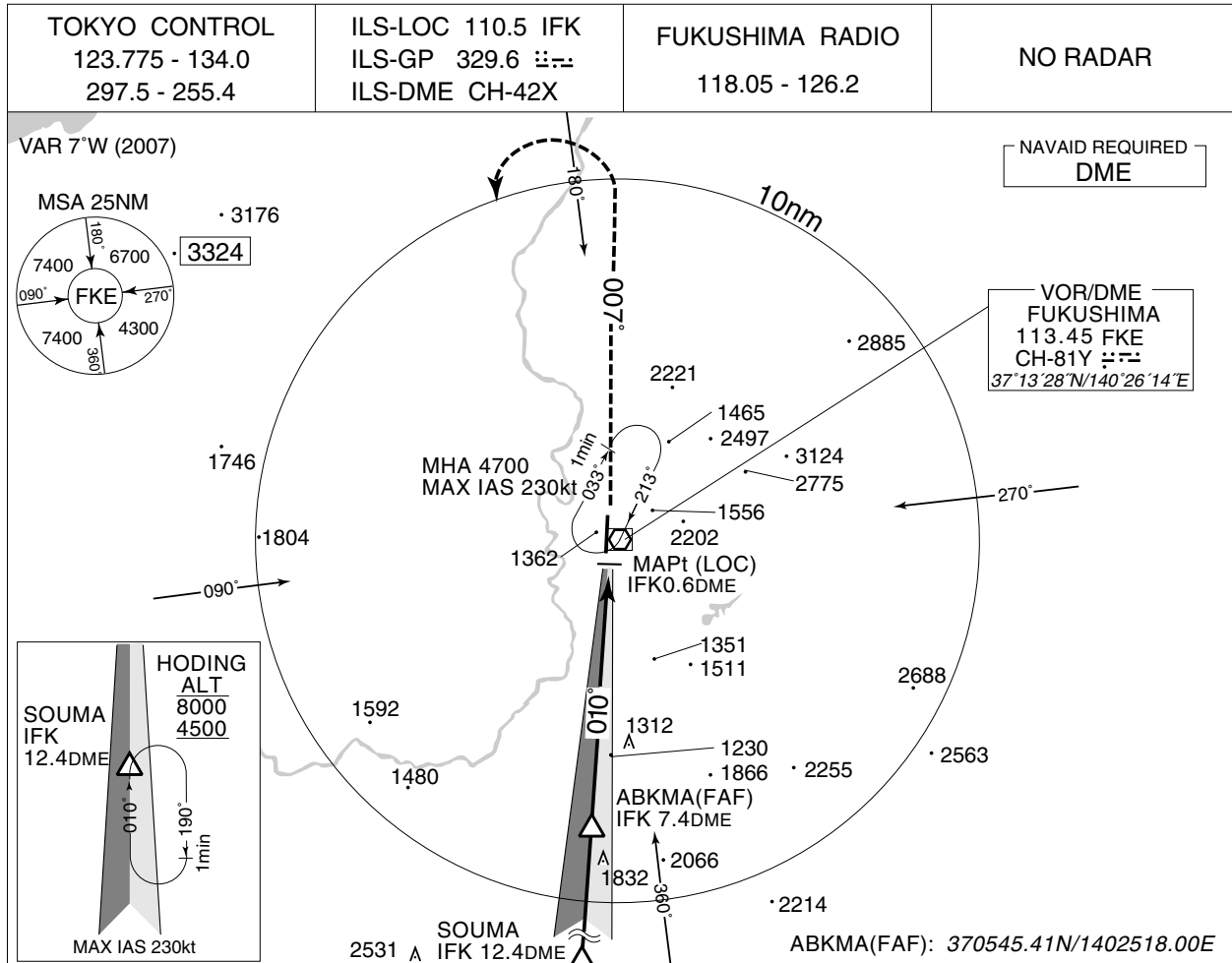
MINIMA		THR elev. 1200		AD elev. 1220	
CAT	CAT I	LOC		CIRCLING	
A	DA(H)	RVR/CMV	MDA(H)	RVR/CMV	MDA(H) VIS
B	1400 (200)	550	1560 (360)	900	-
C				1000	
D				1400	

Missed APCH climb gradient of 4.0% up to 3,000ft.
Minima with Missed APCH gradient of 2.5% are not established.
Circle-to-land RWY19 not authorized.

INSTRUMENT APPROACH CHART

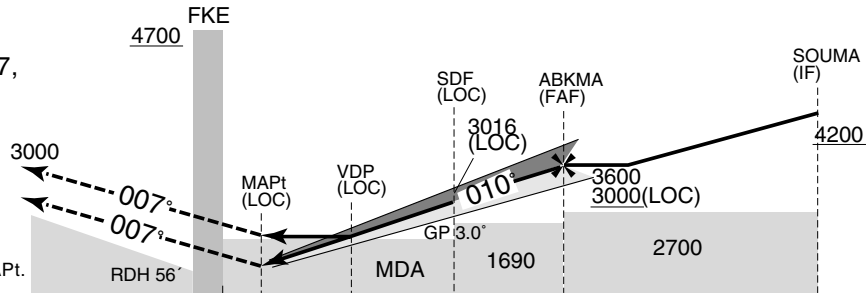
RJSF / FUKUSHIMA

ILS Y or LOC Y RWY 01



MAPt	2	3	4	5	SDF	6	7	FAF	NM to IFK
-	1837	2156	2474	2793	3016	3111	3430	3545	ALT(3.0° APCH Path)

MISSED APPROACH
Climb to 3,000ft via FKE R-007, then turn left, proceed to FKE VOR/DME hold at 4,700ft. Contact FUKUSHIMA RADIO.



* Timing not authorized for defining the MAPt.

DME to IFK	0.6	1.2	5.7	7.4	12.4
NM to RWY01	0	0.5	1.1	5.5	7.2

Missed APCH climb gradient MNM 4.0%

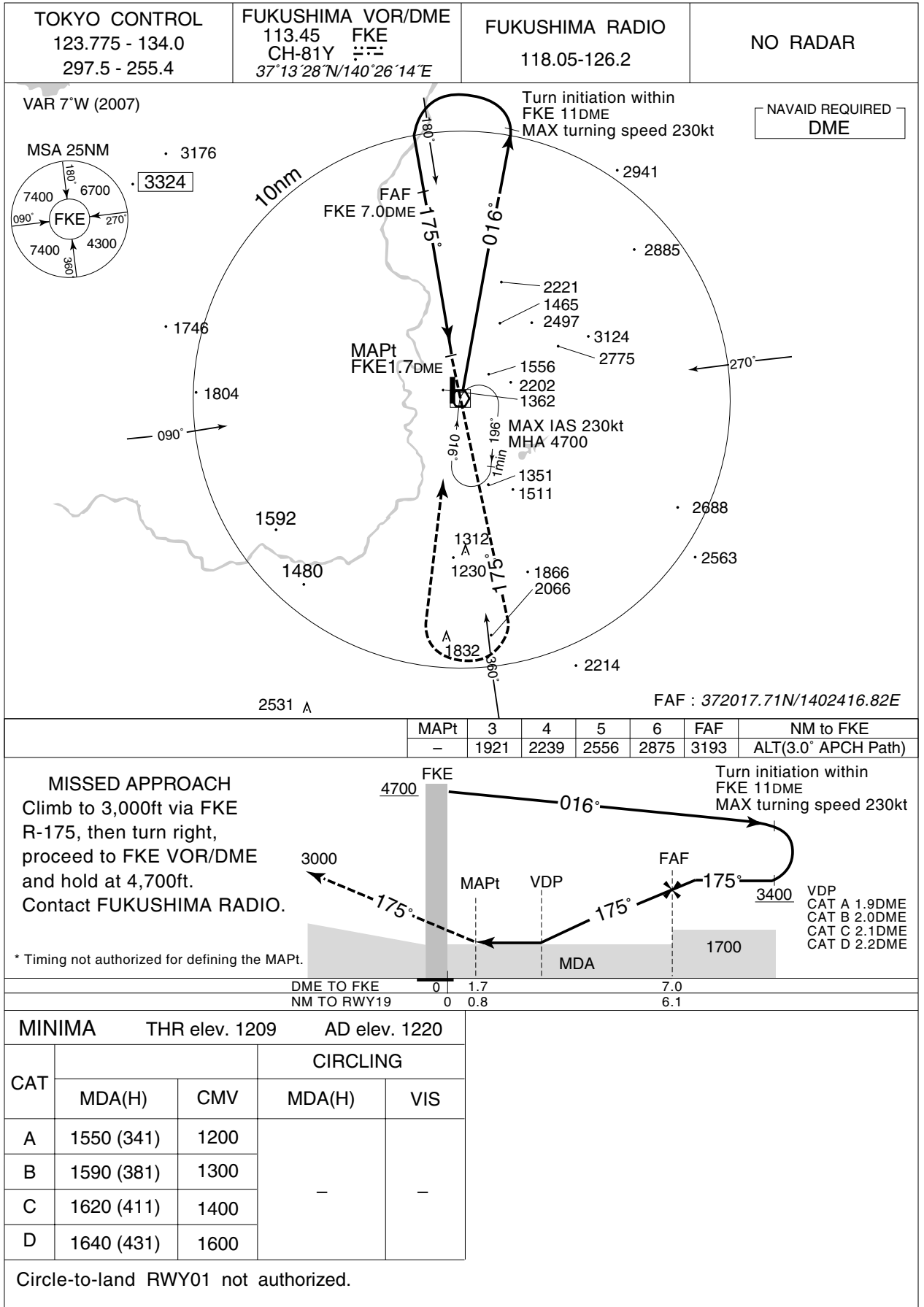
MINIMA		THR elev. 1200		AD elev. 1220		
CAT	CAT I		LOC		CIRCLING	
	DA(H)	RVR/CMV	MDA(H)	RVR/CMV	MDA(H)	VIS
A	1400 (200)	550	1560 (360)	900	-	-
B				1000		
C				1000		
D				1400		

Missed APCH climb gradient of 4.0% up to 3,000ft. Minima with Missed APCH gradient of 2.5% are not established. Circle-to-land RWY19 not authorized.

INSTRUMENT APPROACH CHART

RJSF / FUKUSHIMA

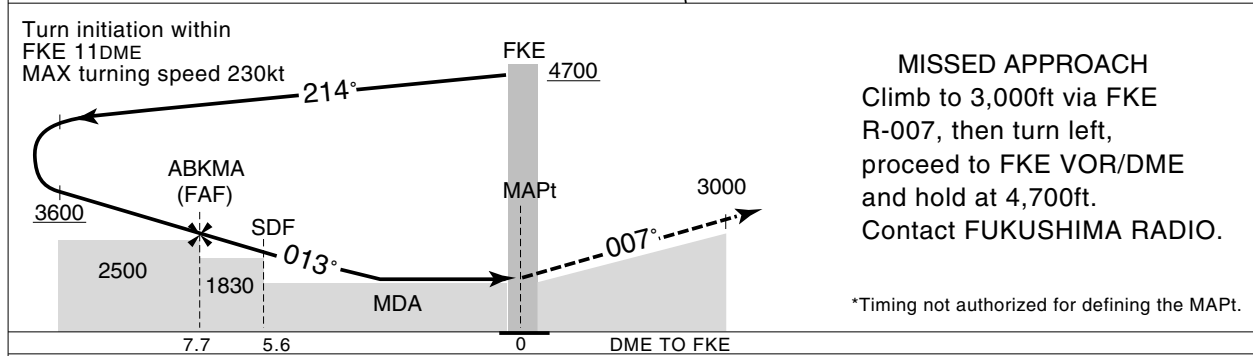
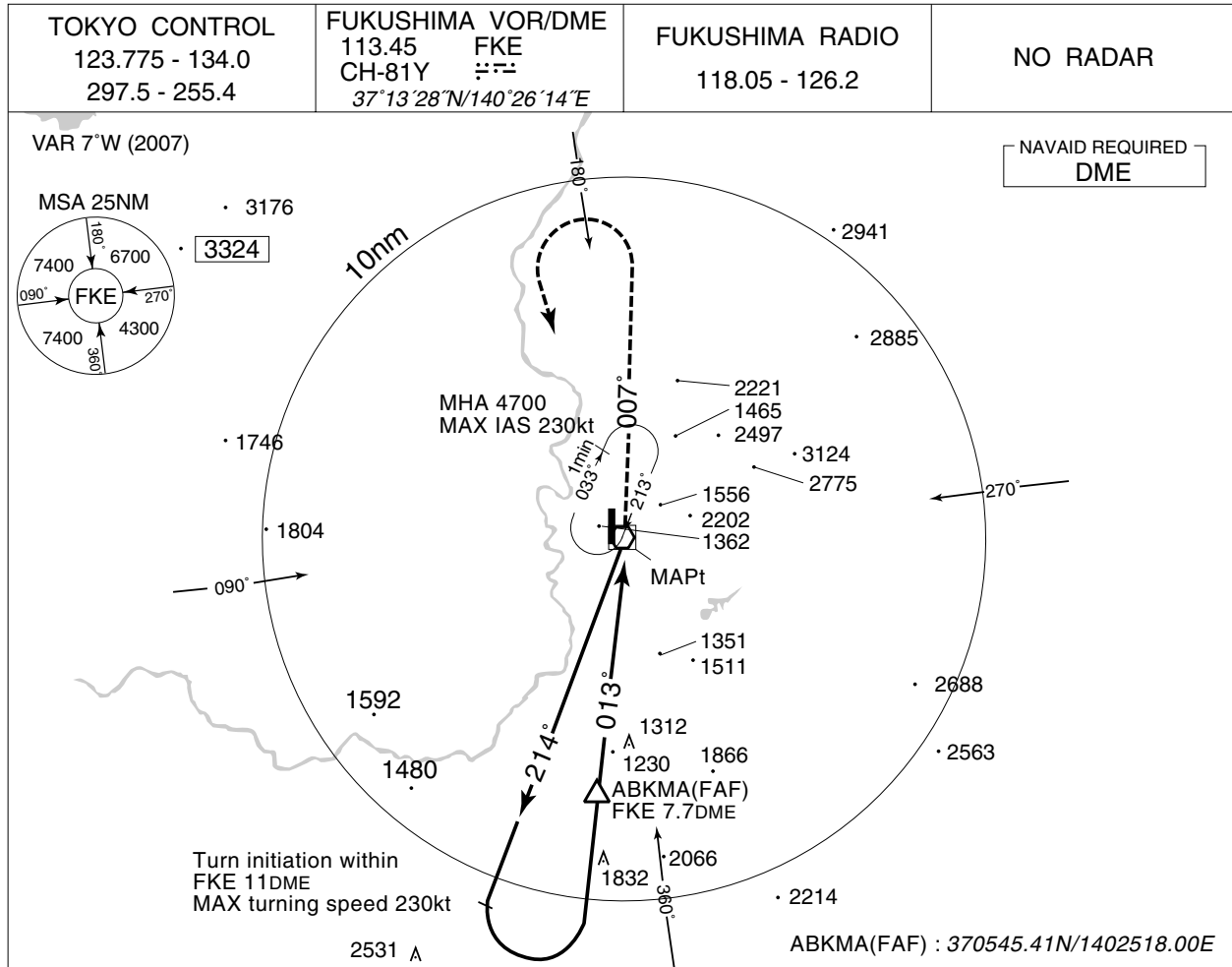
VOR RWY 19



INSTRUMENT APPROACH CHART

RJSF / FUKUSHIMA

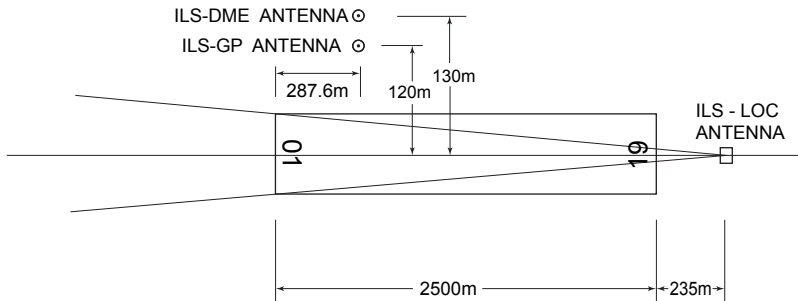
VOR A



MINIMA	THR elev. 1200	AD elev. 1220	
CAT	CIRCLING		
	MDA(H)	VIS	
A		1600	
B	1680 (460)		
C		2400	
D	1770 (550)	3200	

Circle-to-land RWY19 not authorized.

FUKUSHIMA AIRPORT



REMARKS : 1 LOC beam BRG(MAG) 10.0°
2 HGT of ILS REF datum 17.0m(56ft)
3 GP Angle 3.0°
4 ELEV of ILS-DME 372.8m(1223ft)