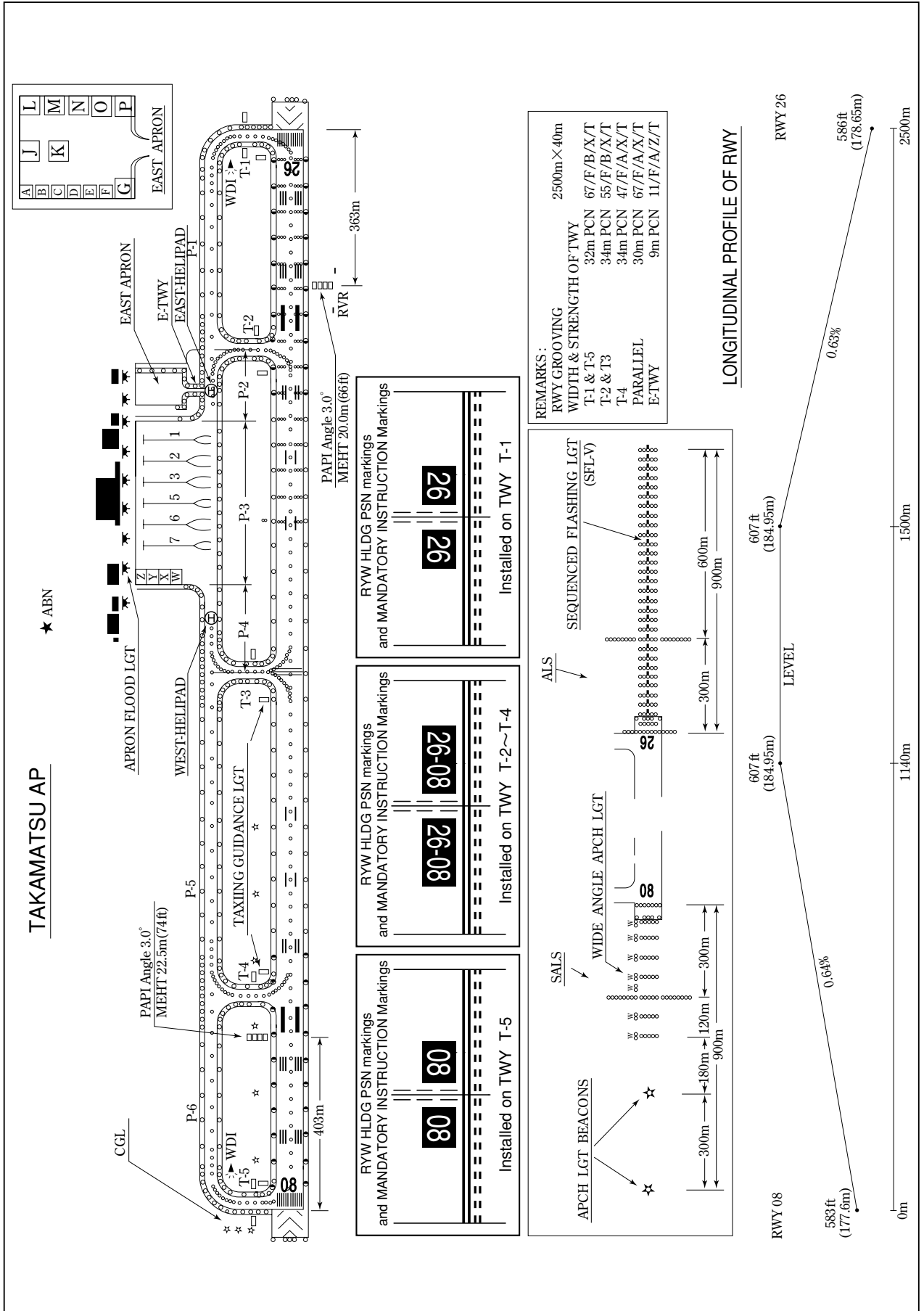


RJOT / TAKAMATSU

AD CHART



AERODROME OBSTACLE CHART-ICAO
TYPE A (OPERATING LIMITATIONS)

DIMENSIONS AND ELEVATIONS IN FEET BEARINGS ARE MAGNETIC

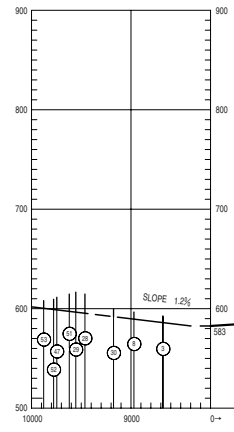
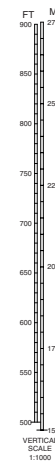
MAGNETIC VARIATION 7°05' W-JUN 2010



AERODROME OBSTACLE CHART-ICAO
TYPE A (OPERATING LIMITATIONS)

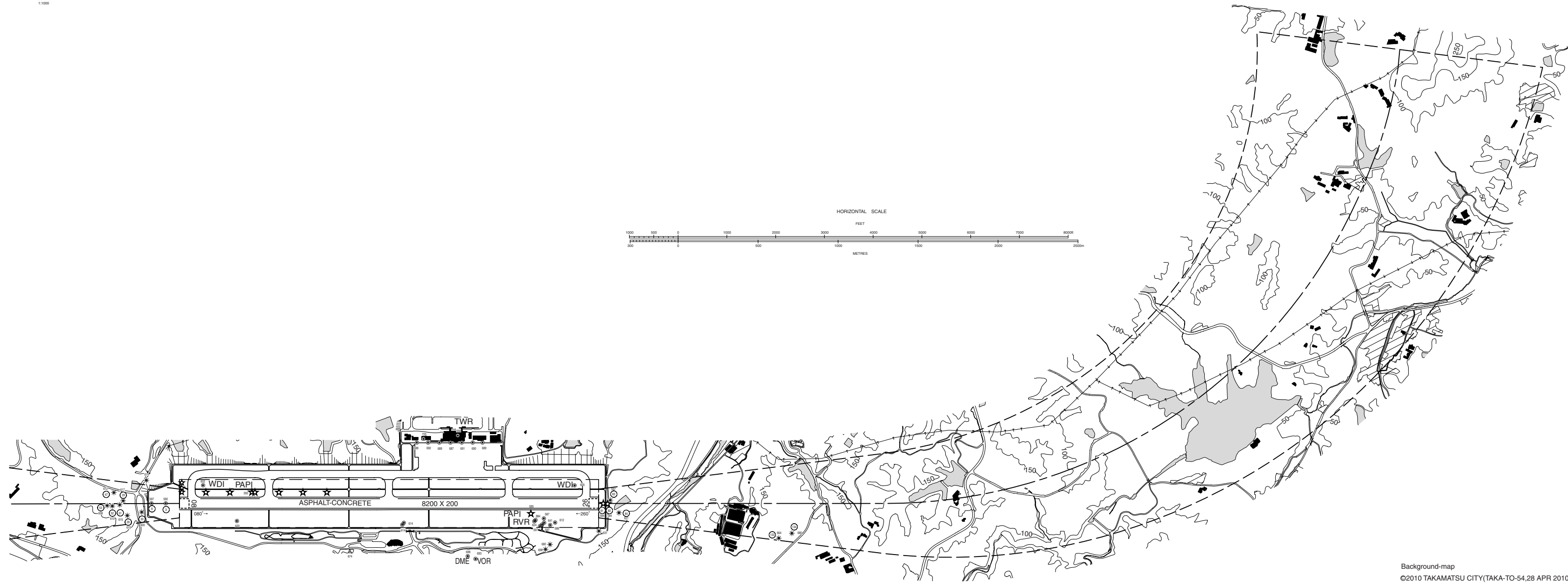
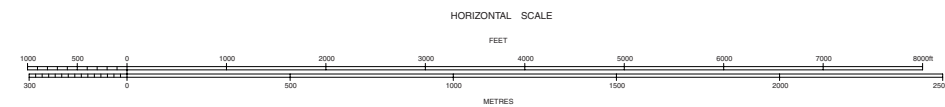
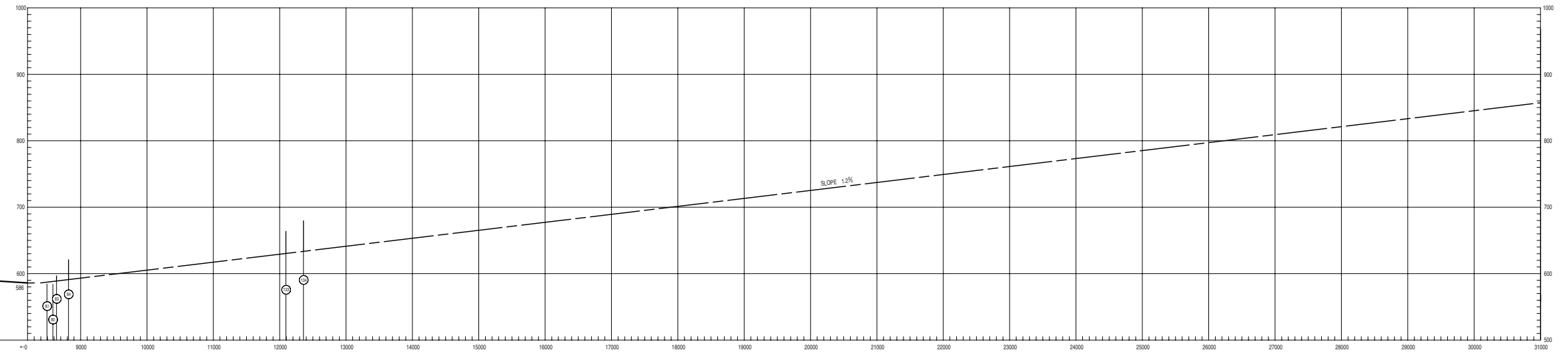
DIMENSIONS AND ELEVATIONS IN FEET BEARINGS ARE MAGNETIC

MAGNETIC VARIATION 7°05' W-JUN 2010



TAKAMATSU AIRPORT
RWY : 08/26

OPERATIONAL DATA	
RWY 08	RWY 26
8200 TAKE OFF RUN AVAILABLE	8200
8200 TAKE OFF DISTANCE AVAILABLE	8200
8200 ACCELERATE STOP DISTANCE AVAILABLE	8200
8200 LANDING DISTANCE AVAILABLE	8200



LEGEND	
○	IDENTIFICATION NUMBER
●	POLE, TOWER, SPIRE, ANTENNA, ETC
*	TREE
—	LEVEE
—	TRANSMISSION LINE OR OVERHEAD CABLE
△	TRANSLATION POINT
★	ASTRONOMICAL GROUND LIGHT

AMENDMENT RECORD		
No.	DATE	ENTERED BY

Background-map
©2010 TAKAMATSU CITY(TAKA-TO-54.28 APR 2010)

STANDARD DEPARTURE CHART-INSTRUMENT

RJOT / TAKAMATSU

SID and TRANSITION

KAGAWA NORTH ONE DEPARTURE

RWY 08 : Climb RWY HDG until 0.5NM from RWY end/KTE 0.9DME, turn left,....

RWY 26 : Climb RWY HDG until 1NM from RWY end/KTE 2.0DME, turn right,....

....climb via KTE R006 to OKC VORTAC.

Note : When take off RWY26, following climb gradient should be maintained until 1000FT.

Speed (Knots)	60	90	120	150	180	210
Rate (Feet/Min)	300	450	600	750	900	1050

KAGAWA REVERSAL SIX DEPARTURE

RWY 08 : Climb RWY HDG until 0.5NM from RWY end/KTE 0.9DME, turn left,....

RWY 26 : Climb RWY HDG until 1NM from RWY end/KTE 2.0DME, turn right,....

....climb via KTE R006, turn left and proceed to KTE VOR/DME within KTE 17.0DME.

Cross KTE VOR/DME at or above 5000FT.

Note : When take off RWY26, following climb gradient should be maintained until 1000FT.

Speed (Knots)	60	90	120	150	180	210
Rate (Feet/Min)	300	450	600	750	900	1050

KOCHI TRANSITION

From over KTE VOR/DME, proceed via KTE R269 to intercept and proceed via KRE R001 to KRE VOR/DME.

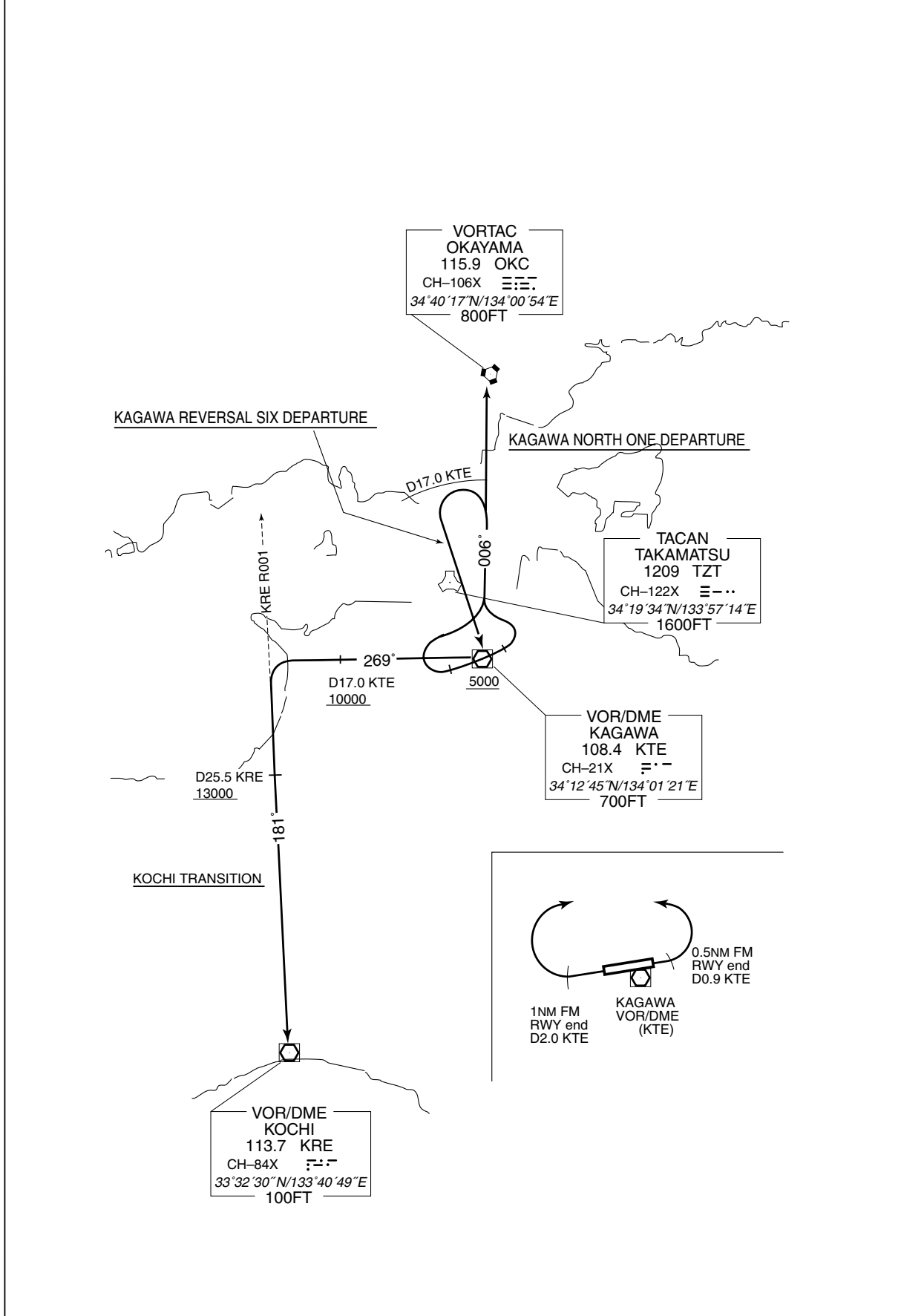
Cross KTE R269/17.0DME at or above 10000FT.

Cross KRE R001/25.5DME at or above 13000FT.

STANDARD DEPARTURE CHART-INSTRUMENT

RJOT / TAKAMATSU

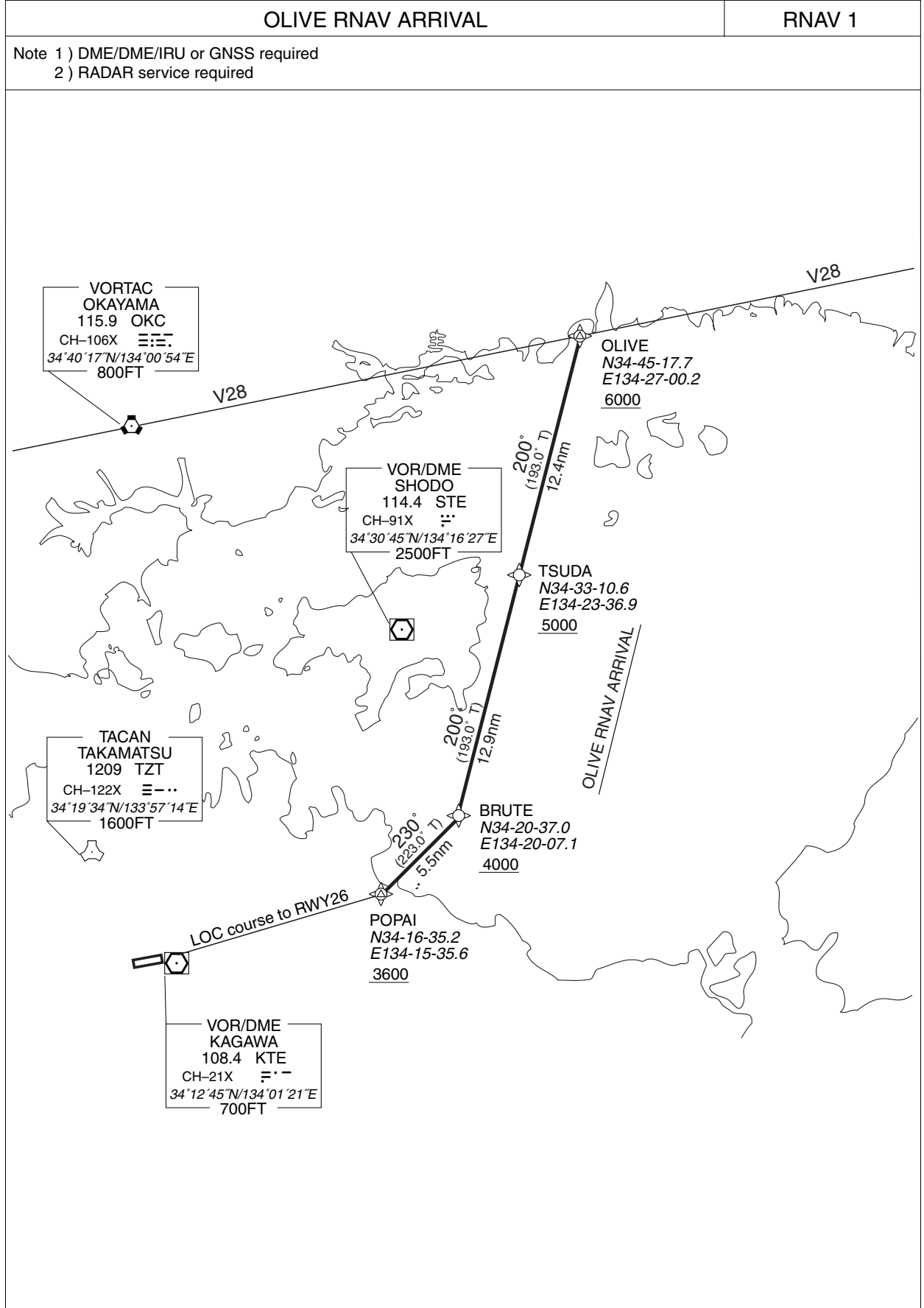
SID and TRANSITION



STANDARD ARRIVAL CHART-INSTRUMENT

RJOT / TAKAMATSU

RNAV STAR RWY 26



STANDARD ARRIVAL CHART-INSTRUMENT

RJOT / TAKAMATSU

RNAV STAR RWY 26

OLIVE RNAV ARRIVAL

From OLIVE at or above 6000FT, to TSUDA at or above 5000FT, to BRUTE at or above 4000FT, to POPAI at or above 3600FT.

FIX	DESIGNATION	COORDINATES
	OLIVE	344517.7N 1342700.2E
	TSUDA	343310.6N 1342336.9E
	BRUTE	342037.0N 1342007.1E
	POPAI	341635.2N 1341535.6E
Critical DME	-	
DME GAP	-	
Inappropriate Nav aids	See AD1.1.6.10.3. Inappropriate NAVAIDs for RNAV1	

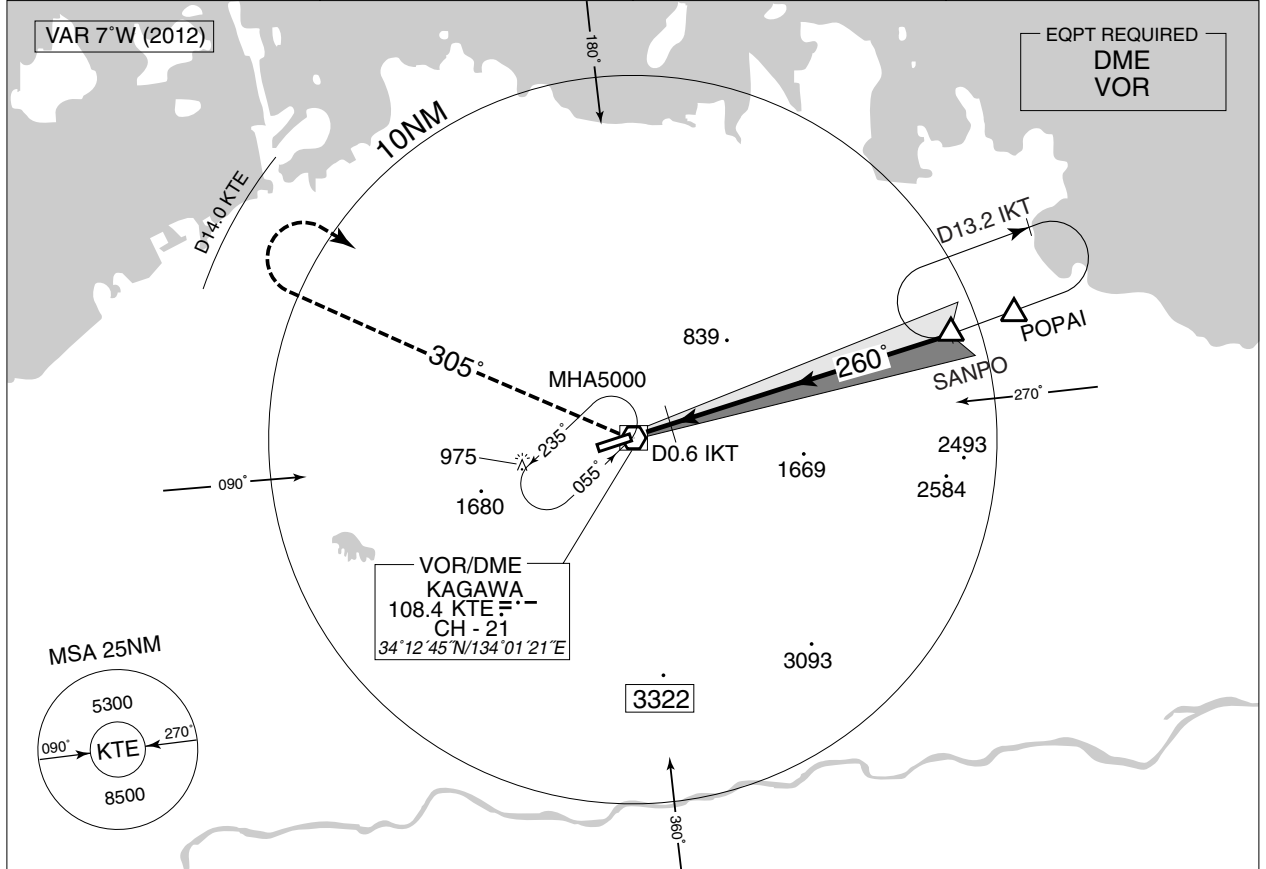
Rcmd. Path Terminator	Fix ID (Waypoint Name)	Fly Over	Distance (NM)	MAG Track (TRUE Track)	Turn Direction	Altitude (FT)	Speed Limit (kt)	Vertical Angle	Navigation Performance
IF	OLIVE	—	—	—	—	+6000	—	—	RNAV1
TF	TSUDA	—	12.4	200° (193.0°)	—	+5000	—	—	RNAV1
TF	BRUTE	—	12.9	200° (193.0°)	—	+4000	—	—	RNAV1
TF	POPAI	—	5.5	230° (223.0°)	—	+3600	—	—	RNAV1

INSTRUMENT APPROACH CHART

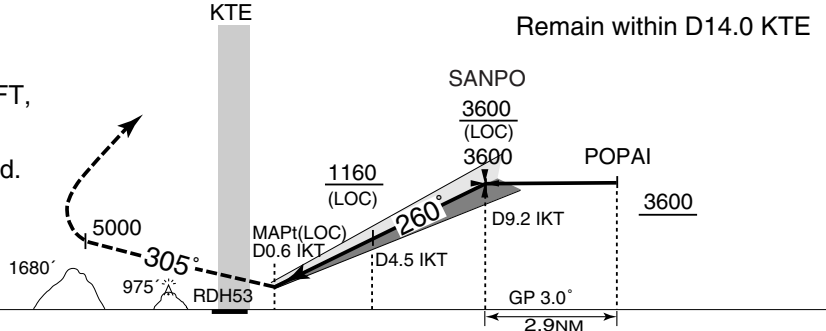
RJOT / TAKAMATSU

ILS Z or LOC Z RWY 26

KANSAI APP 121.2 – 120.4 – 261.2	ILS LOC 109.7 IKT --- ILS-GP 333.2 ILS-DME CH-34	TAKAMATSU TOWER 118.3 – 126.2	RADAR AVAILABLE ATIS 127.45
--	--	---	---------------------------------------



MISSED APPROACH
Climb on HDG260° to 1000FT,
turn right via KTE R305 to 5000FT,
turn right within KTE 14.0DME,
direct to KTE VOR/DME and hold.
Contact KANSAI APP.



MINIMA		THR elev. 586		AD elev. 607		
CAT	CAT I		LOC		CIRCLING	
	DA(H)	RVR/ CMV	MDA(H)	RVR/ CMV	MDA(H)	VIS
A	805 (219)	600	1000 (414)	900	1060 (453)	1600
B				1000		
C				1280 (673)	2400	
D				1400	3200	

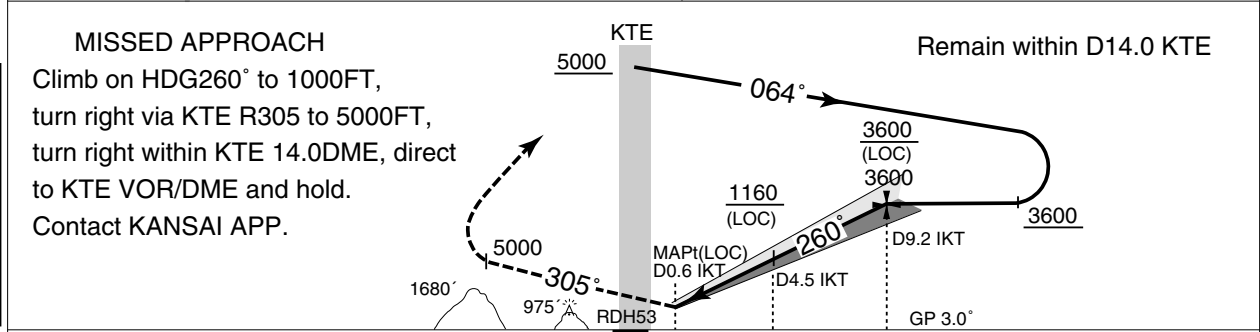
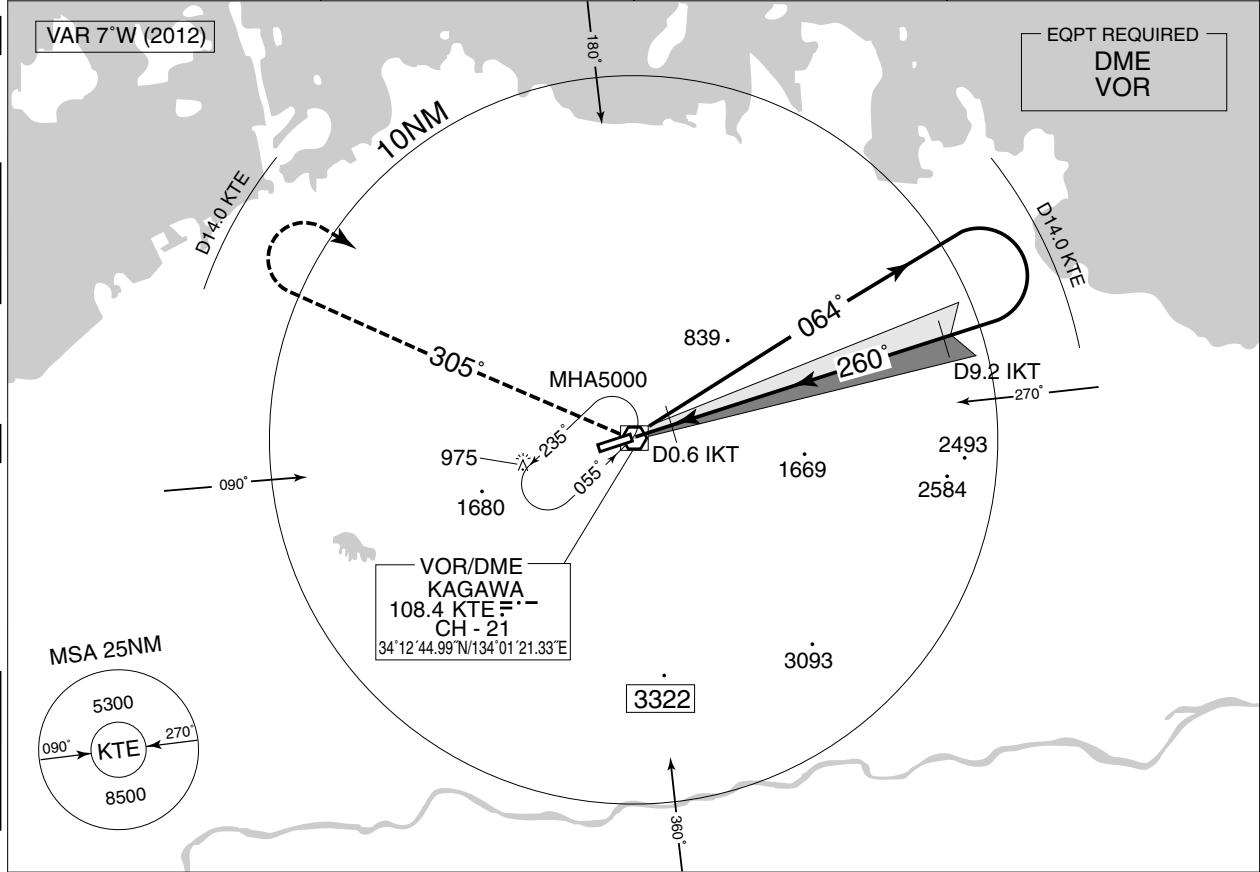
Circling to NORTH side of RWY only.
Caution: Terrain (975') 2NM west of the airport.
Timing not authorized for defining the MAPt.

INSTRUMENT APPROACH CHART

RJOT / TAKAMATSU

ILS Y or LOC Y RWY26

KANSAI APP 121.2 – 120.4 – 261.2	ILS LOC 109.7 IKT 333.2 ILS-GP 333.2 ILS-DME CH-34	TAKAMATSU TOWER 118.3 – 126.2	RADAR AVAILABLE ATIS 127.45
--	--	---	---------------------------------------



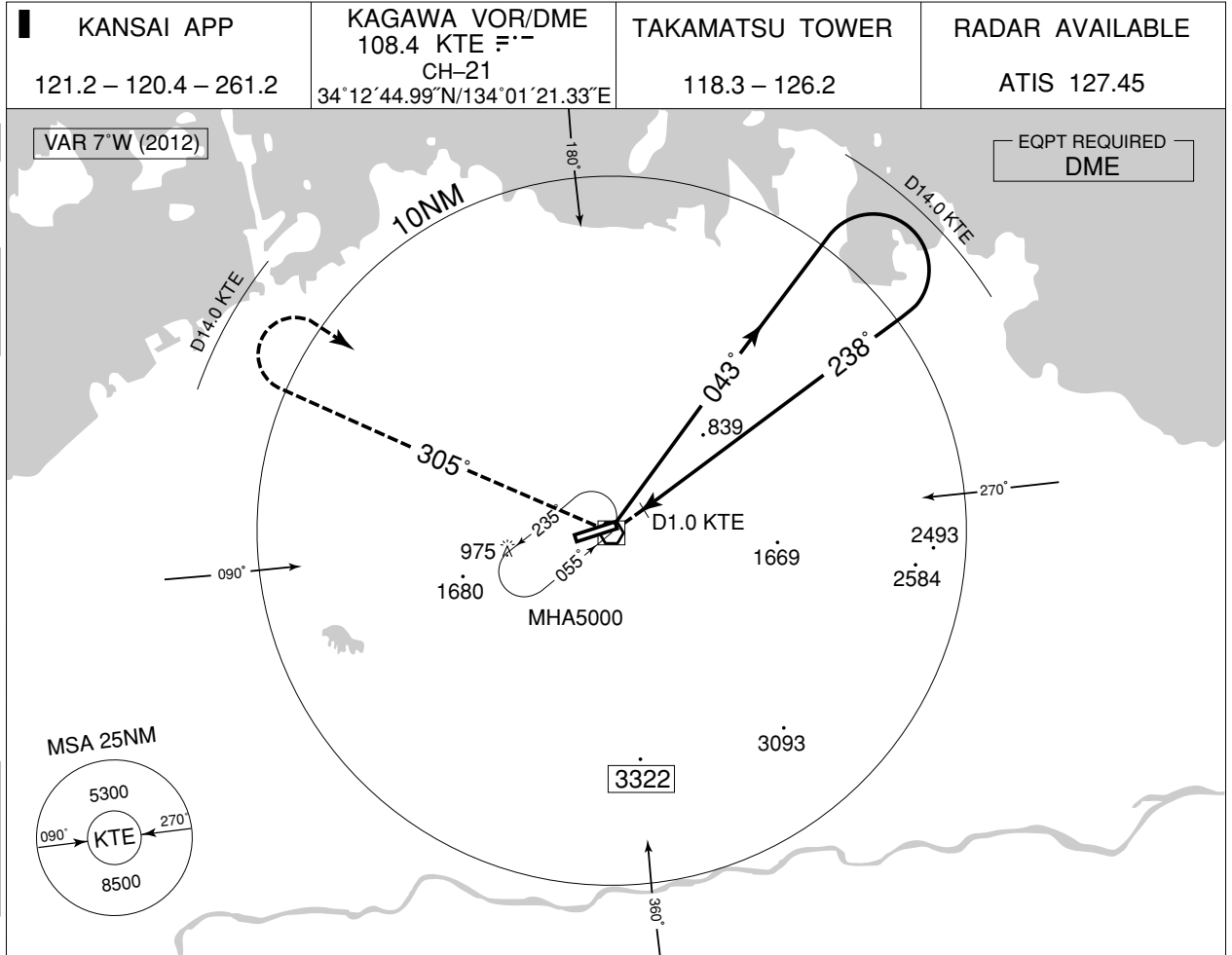
MINIMA		THR elev. 586	AD elev. 607			
CAT	CAT I		LOC		CIRCLING	
	DA(H)	RVR/CMV	MDA(H)	RVR/CMV	MDA(H)	VIS
A	805 (219)	600	1000 (414)	900	1060 (453)	1600
B				1000		
C				1280 (673)	2400	
D				1400	3200	

Circling to NORTH side of RWY only.
Timing not authorized for defining the MAPt.

INSTRUMENT APPROACH CHART

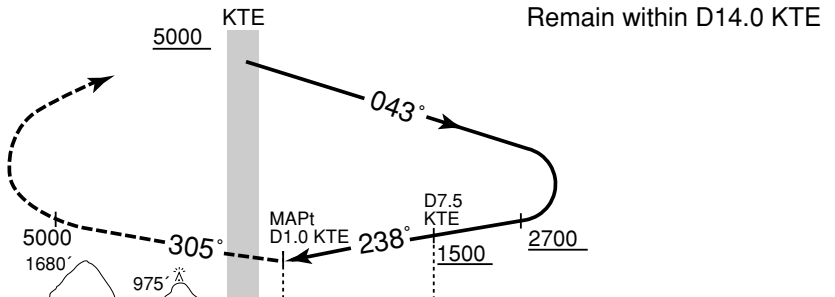
RJOT / TAKAMATSU

VOR RWY 26



MISSED APPROACH

Turn right, climb via KTE R305 to 5000FT, turn right within KTE 14.0DME, direct to KTE VOR/DME and hold. Contact KANSAI APP.

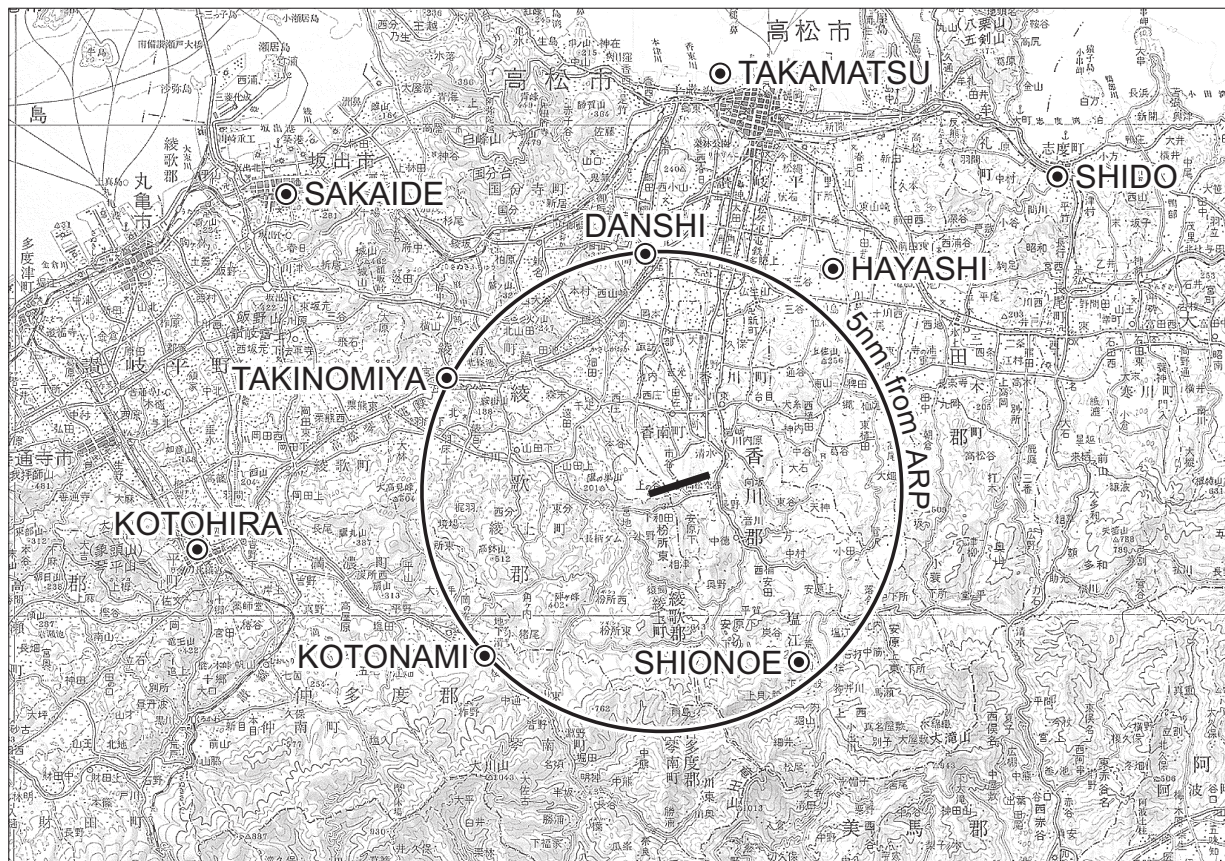


MINIMA		THR elev. 586	AD elev. 607	
CAT			CIRCLING	
	MDA(H)	RVR/CMV	MDA(H)	VIS
A	1300 (714)	1200	1300 (693)	1600
B		1400		2400
C		1800		3200
D				

Circling to NORTH side of RWY only.

RJOT/TAKAMATSU

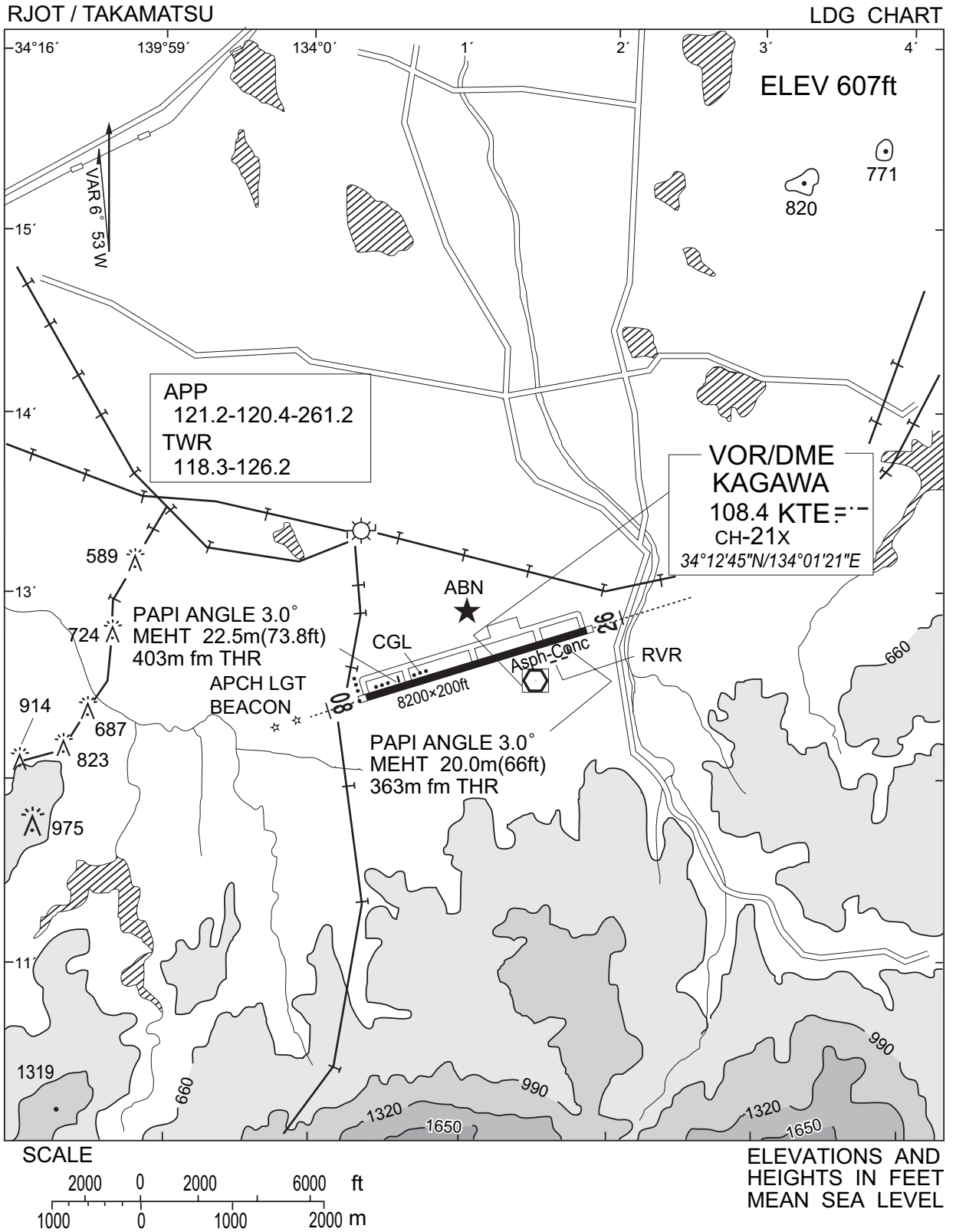
Visual REP



Call sign	BRG / DIST from ARP	Remarks
高松 Takamatsu	017°/8.5NM	高松港 Harbor
林 Hayashi	044°/5NM	由良山 Mt. Yura
志度 Shido	058°/9NM	JR志度駅 JR Station
塩江 Shionoe	150°/4.5NM	内場池 Pond of Naiba
琴南 Kotonami	245°/5NM	四国電力開閉所 Switch station of Electric Power
琴平 Kotohira	267°/10NM	JR琴平駅 JR Station
滝宮 Takinomiya	296°/5NM	琴平電鉄滝宮駅 Station
坂出 Sakaide	311°/10NM	JR坂出駅 JR Station
檀紙 Danshi	359°/5NM	ガスタンク Gas tank

注：有視界飛行方式により高松空港に着陸しようとする航空機又は高松航空交通管制圏を通過しようとする航空機は、東方向から進入する場合は、志度ポイント上空で、西方向から進入する場合は、坂出ポイント又は琴平ポイント上空で、北方向から進入する場合は、高松ポイント上空において高松タワーに連絡すること。

NOTE: When VFR flight is going to enter the control zone for landing or passing through, the pilot should contact with the control tower over;
SHIDO in case of coming from east/
SAKAIDE or KOTOHIRA in case of coming from west/
TAKAMATSU in case of coming from north.

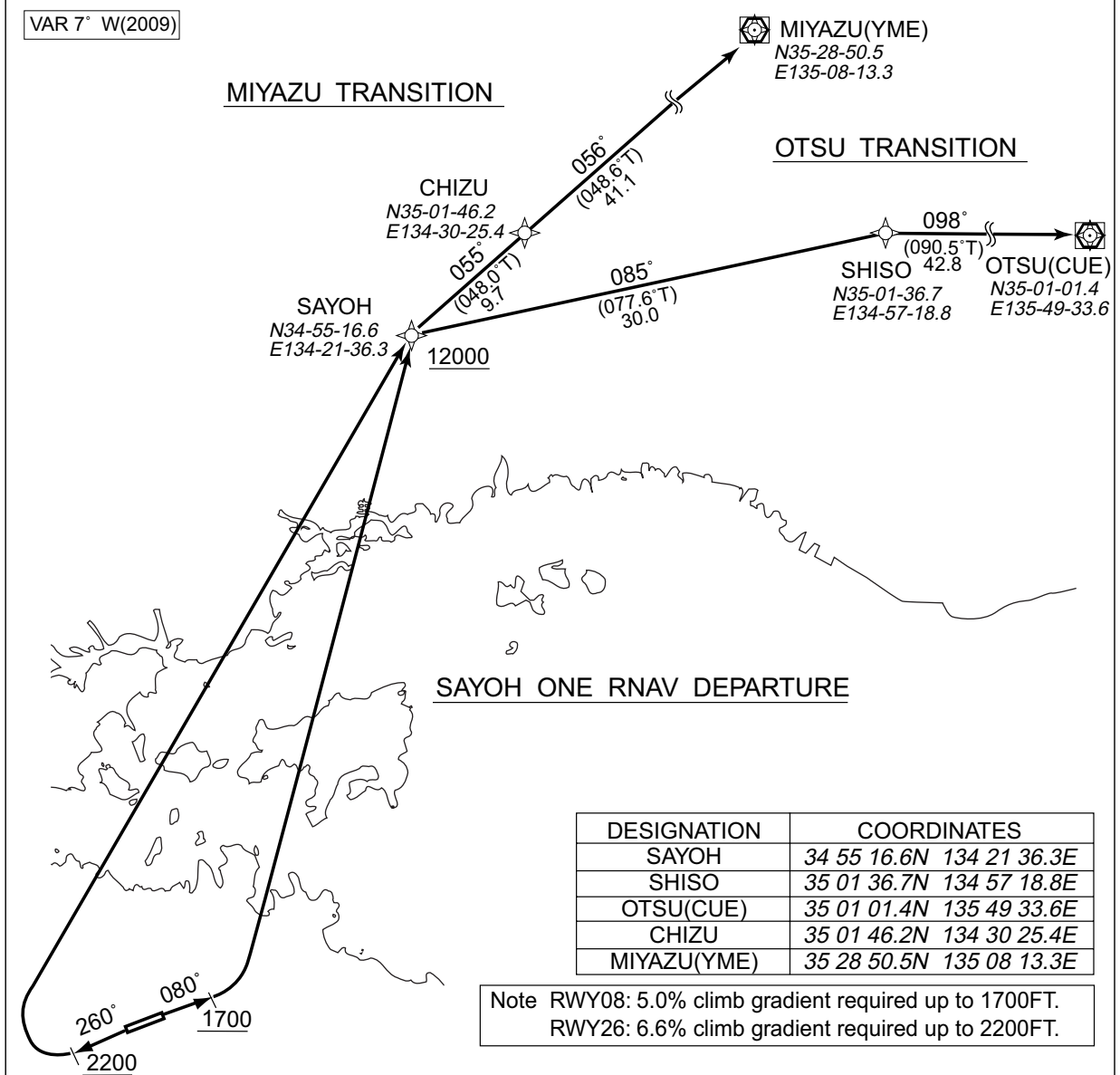


STANDARD DEPARTURE CHART-INSTRUMENT

RJOT / TAKAMATSU

RNAV SID and TRANSITION

SAYOH ONE RNAV DEPARTURE		RNAV 1
Note 1) DME/DME/IRU or GNSS required. ※The aircraft equipped with only DME/DME/IRU must be able to update its position without delay at the starting point of take-off roll. 2) RADAR service required.	Critical DME	RWY26 STE : DER – 2NM from DER
	DME GAP	-
	Inappropriate NavAids	See AD1.1.6.10.3. Inappropriate NAVAIDs for RNAV1



<p><u>SAYOH ONE RNAV DEPARTURE</u> RWY08 : Climb on HDG080° at or above 1700FT, turn left direct to SAYOH at or above 12000FT. RWY26 : Climb on HDG260° at or above 2200FT, turn right direct to SAYOH at or above 12000FT.</p>
<p><u>OTSU TRANSITION</u> From SAYOH, to SHISO, to OTSU(CUE).</p>
<p><u>MIYAZU TRANSITION</u> From SAYOH, to CHIZU, to MIYAZU(YME).</p>
<p>Note RWY08: 5.0% climb gradient required up to 1700FT. OBST ALT 755FT located at 096°/0.69NM FM end of RWY08. RWY26: 6.6% climb gradient required up to 2200FT. OBST ALT 1772FT located at 255°/3.35NM FM end of RWY26.</p>

STANDARD DEPARTURE CHART-INSTRUMENT

RJOT / TAKAMATSU

RNAV SID and TRANSITION

SAYOH ONE RNAV DEPARTURE

RWY08

Rcmd. Path Terminator	Fix ID (Waypoint Name)	Fly Over	Distance (NM)	MAG Track (TRUE Track)	Turn Direction	Altitude (FT)	Speed Limit (KIAS)	Vertical Angle	Navigation Performance
VA	—	—	—	080° (072.9°)	—	+1700	—	—	RNAV1
DF	SAYOH	—	—	—	L	+12000	—	—	RNAV1

RWY26

Rcmd. Path Terminator	Fix ID (Waypoint Name)	Fly Over	Distance (NM)	MAG Track (TRUE Track)	Turn Direction	Altitude (FT)	Speed Limit (KIAS)	Vertical Angle	Navigation Performance
VA	—	—	—	260° (252.9°)	—	+2200	—	—	RNAV1
DF	SAYOH	—	—	—	R	+12000	—	—	RNAV1

OTSU TRANSITION

Rcmd. Path Terminator	Fix ID (Waypoint Name)	Fly Over	Distance (NM)	MAG Track (TRUE Track)	Turn Direction	Altitude (FT)	Speed Limit (KIAS)	Vertical Angle	Navigation Performance
IF	SAYOH	—	—	—	—	—	—	—	RNAV1
TF	SHISO	—	30.0	085° (077.6°)	—	—	—	—	RNAV1
TF	OTSU(CUE)	—	42.8	098° (090.5°)	—	—	—	—	RNAV1

MIYAZU TRANSITION

Rcmd. Path Terminator	Fix ID (Waypoint Name)	Fly Over	Distance (NM)	MAG Track (TRUE Track)	Turn Direction	Altitude (FT)	Speed Limit (KIAS)	Vertical Angle	Navigation Performance
IF	SAYOH	—	—	—	—	—	—	—	RNAV1
TF	CHIZU	—	9.7	055° (048.0°)	—	—	—	—	RNAV1
TF	MIYAZU (YME)	—	41.1	056° (048.6°)	—	—	—	—	RNAV1

STANDARD DEPARTURE CHART-INSTRUMENT

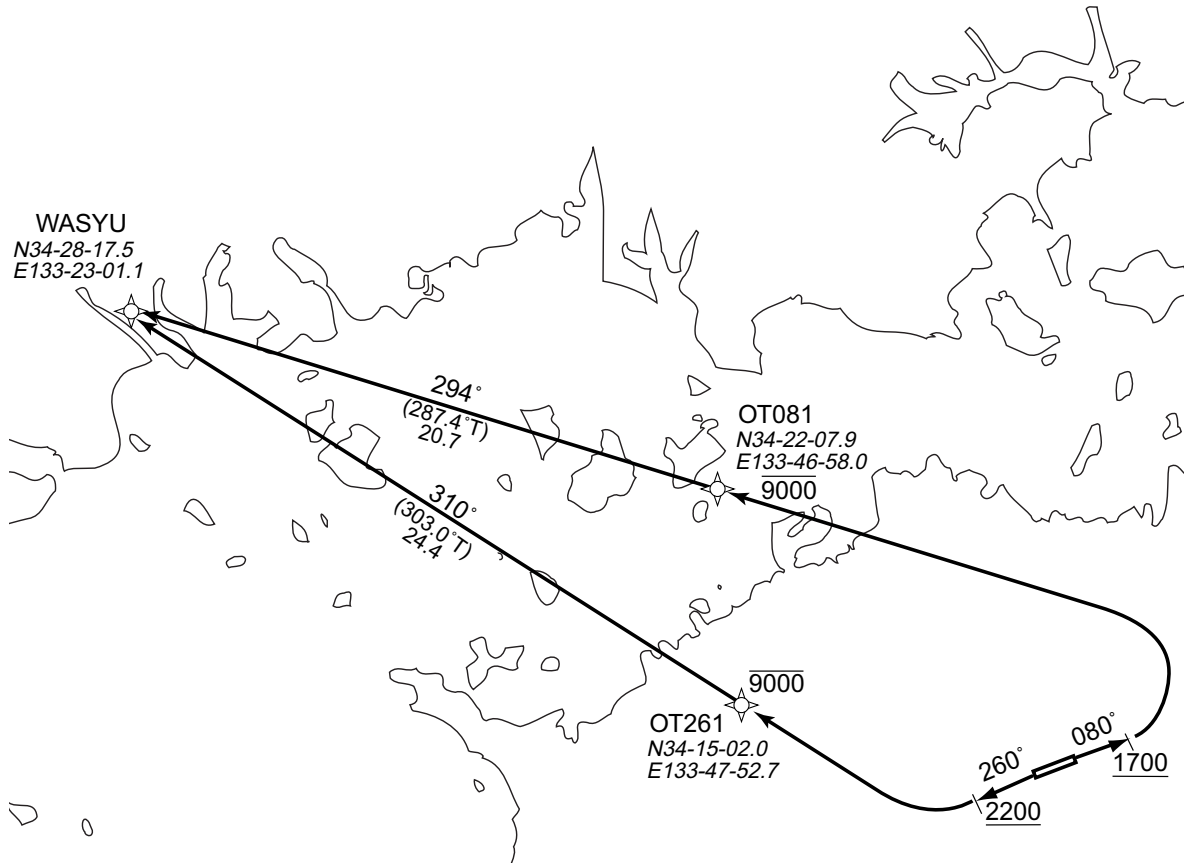
RJOT / TAKAMATSU

RNAV SID

WASYU ONE RNAV DEPARTURE		RNAV 1
Note 1) DME/DME/IRU or GNSS required. ※The aircraft equipped with only DME/DME/IRU must be able to update its position without delay at the starting point of take-off roll. 2) RADAR service required.	Critical DME	RWY26 STE : DER – 2NM from DER
	DME GAP	-
	Inappropriate Navaids	See AD1.1.6.10.3. Inappropriate NAVAIDs for RNAV1

VAR 7° W(2009)

DESIGNATION	COORDINATES
OT081	34 22 07.9N 133 46 58.0E
OT261	34 15 02.0N 133 47 52.7E
WASYU	34 28 17.5N 133 23 01.1E



Note RWY08: 5.0% climb gradient required up to 1700FT.
RWY26: 6.6% climb gradient required up to 2200FT.

WASYU ONE RNAV DEPARTURE

RWY08 : Climb on HDG080° at or above 1700FT, turn left direct to OT081 at or below 9000FT, to WASYU.
RWY26 : Climb on HDG260° at or above 2200FT, turn right direct to OT261 at or below 9000FT, to WASYU.

Note RWY08: 5.0% climb gradient required up to 1700FT.
OBST ALT 755FT located at 096°/0.69NM FM end of RWY08.
RWY26: 6.6% climb gradient required up to 2200FT.
OBST ALT 1772FT located at 255°/3.35NM FM end of RWY26.

STANDARD DEPARTURE CHART-INSTRUMENT

RJOT / TAKAMATSU

RNAV SID

WASYU ONE RNAV DEPARTURE

RWY08

Rcmd. Path Terminator	Fix ID (Waypoint Name)	Fly Over	Distance (NM)	MAG Track (TRUE Track)	Turn Direction	Altitude (FT)	Speed Limit (KIAS)	Vertical Angle	Navigation Performance
VA	—	—	—	080° (072.9°)	—	+1700	—	—	RNAV1
DF	OT081	—	—	—	L	-9000	—	—	RNAV1
TF	WASYU	—	20.7	294° (287.4°)	—	—	—	—	RNAV1

RWY26

Rcmd. Path Terminator	Fix ID (Waypoint Name)	Fly Over	Distance (NM)	MAG Track (TRUE Track)	Turn Direction	Altitude (FT)	Speed Limit (KIAS)	Vertical Angle	Navigation Performance
VA	—	—	—	260° (252.9°)	—	+2200	—	—	RNAV1
DF	OT261	—	—	—	R	-9000	—	—	RNAV1
TF	WASYU	—	24.4	310° (303.0°)	—	—	—	—	RNAV1

STANDARD DEPARTURE CHART-INSTRUMENT

RJOT / TAKAMATSU

RNAV SID and TRANSITION

TAROH ONE RNAV DEPARTURE		RNAV 1
Note 1) DME/DME/IRU or GNSS required. ※The aircraft equipped with only DME/DME/IRU must be able to update its position without delay at the starting point of take-off roll. 2) RADAR service required.	Critical DME	RWY26 STE : DER – 2NM from DER MIHO TRANSITION HGE : 50NM to JEC – 36NM to JEC OIE : 5NM to JEC – JEC
	DME GAP	-
	Inappropriate Nav aids	See AD1.1.6.10.3. Inappropriate NAVAIDs for RNAV1

VAR 7° W(2009)

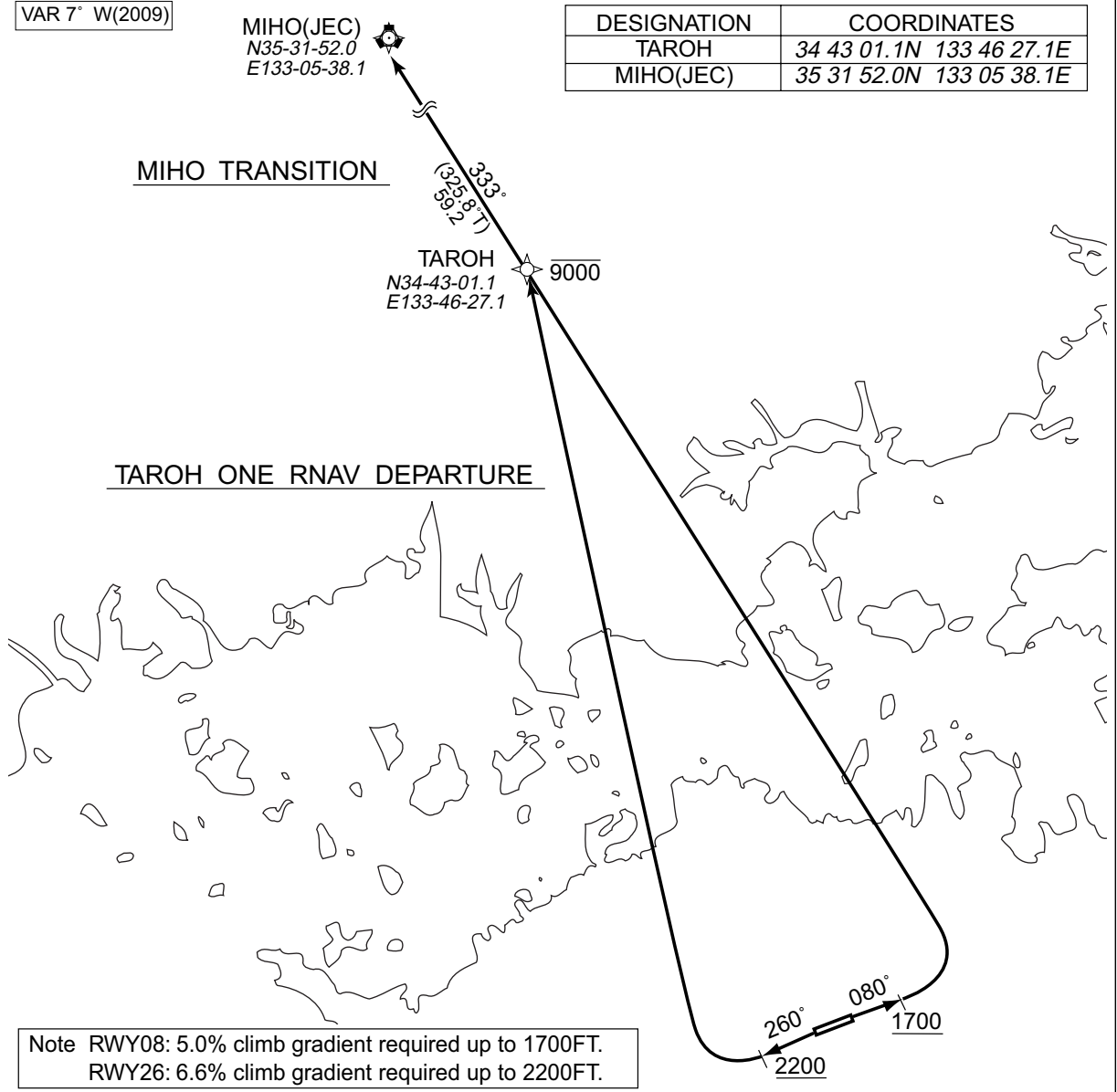
MIHO(JEC)
N35-31-52.0
E133-05-38.1

DESIGNATION	COORDINATES
TAROH	34 43 01.1N 133 46 27.1E
MIHO(JEC)	35 31 52.0N 133 05 38.1E

MIHO TRANSITION

TAROH
N34-43-01.1
E133-46-27.1
9000

TAROH ONE RNAV DEPARTURE



Note RWY08: 5.0% climb gradient required up to 1700FT.
RWY26: 6.6% climb gradient required up to 2200FT.

<p>TAROH ONE RNAV DEPARTURE RWY08 : Climb on HDG080° at or above 1700FT, turn left direct to TAROH at or below 9000FT. RWY26 : Climb on HDG260° at or above 2200FT, turn right direct to TAROH at or below 9000FT.</p>
<p>MIHO TRANSITION From TAROH, to MIHO(JEC).</p>
<p>Note RWY08: 5.0% climb gradient required up to 1700FT. OBST ALT 755FT located at 096°/0.69NM FM end of RWY08. RWY26: 6.6% climb gradient required up to 2200FT. OBST ALT 1772FT located at 255°/3.35NM FM end of RWY26.</p>

STANDARD DEPARTURE CHART-INSTRUMENT

RJOT / TAKAMATSU

RNAV SID and TRANSITION

TAROH ONE RNAV DEPARTURE

RWY08

Rcmd. Path Terminator	Fix ID (Waypoint Name)	Fly Over	Distance (NM)	MAG Track (TRUE Track)	Turn Direction	Altitude (FT)	Speed Limit (KIAS)	Vertical Angle	Navigation Performance
VA	—	—	—	080° (072.9°)	—	+1700	—	—	RNAV1
DF	TAROH	—	—	—	L	-9000	—	—	RNAV1

RWY26

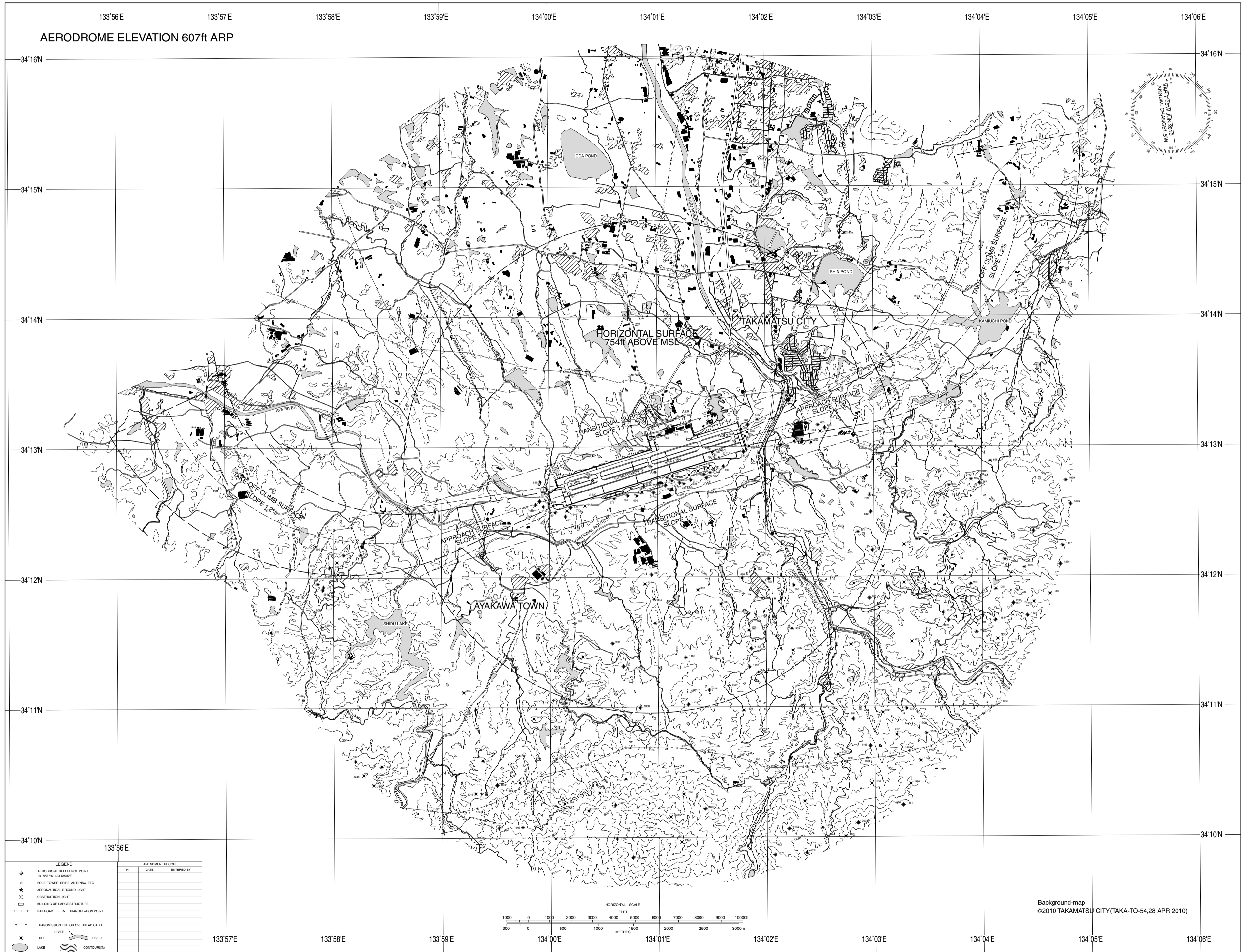
Rcmd. Path Terminator	Fix ID (Waypoint Name)	Fly Over	Distance (NM)	MAG Track (TRUE Track)	Turn Direction	Altitude (FT)	Speed Limit (KIAS)	Vertical Angle	Navigation Performance
VA	—	—	—	260° (252.9°)	—	+2200	—	—	RNAV1
DF	TAROH	—	—	—	R	-9000	—	—	RNAV1

MIHO TRANSITION

Rcmd. Path Terminator	Fix ID (Waypoint Name)	Fly Over	Distance (NM)	MAG Track (TRUE Track)	Turn Direction	Altitude (FT)	Speed Limit (KIAS)	Vertical Angle	Navigation Performance
IF	TAROH	—	—	—	—	—	—	—	RNAV1
TF	MIHO(JEC)	—	59.2	333° (325.8°)	—	—	—	—	RNAV1

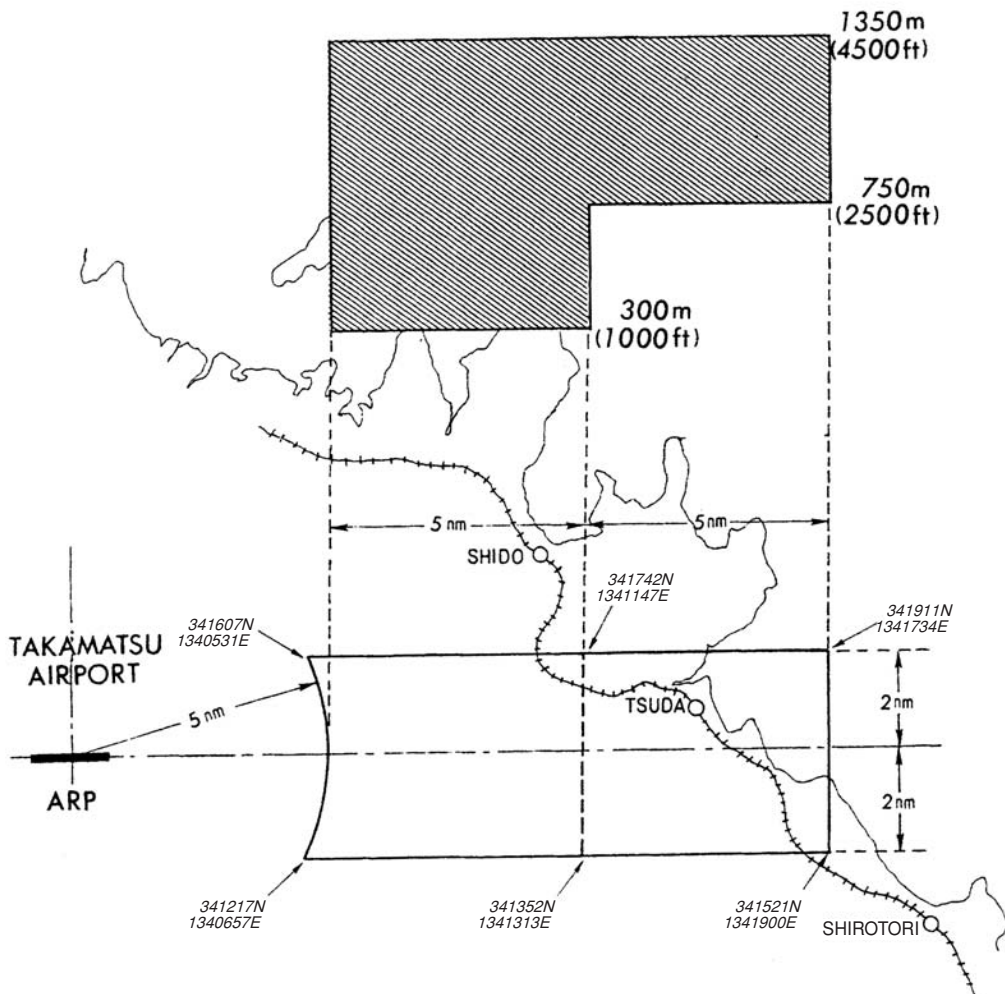
AERODROME OBSTACLE CHART-ICAO
TYPE B

DIMENSIONS AND ELEVATIONS IN FEET BEARINGS ARE MAGNETIC

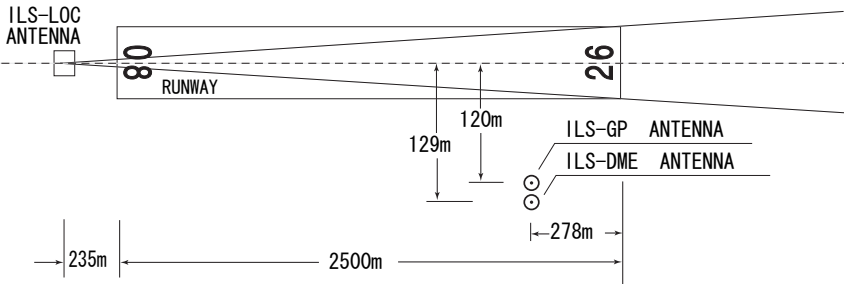


NAME	LATERAL LIMITS	UPPER LIMIT (AMSL)	UNIT PROVIDING SERVICE	REMARKS
		LOWER LIMIT (AMSL) M(ft)		
1	2	3	4	5
高松 Takamatsu	下記に示される区域 The area shown below		Primary Kansai APP or Radar 121.2 MHz Secondary Takamatsu TWR 118.3 MHz	当該空域を飛行しようとする航空機は、関西アプローチ又は高松タワーに連絡し、コールサイン、現在位置、高度及び意図を通報し指示を受けること。 Pilot of aircraft operating in this area shall contact Kansai Approach or Takamatsu Tower for ATC instructions giving informations on aircraft identification, positions, altitude and pilot's intentions.

TAKAMATSU POSITIVE CONTROL AREA



TAKAMATSU AIRPORT



- REMARKS :
- | | |
|-------------------------|----------------|
| 1. LOC beam BRG (MAG) | 260° |
| 2. HGT of ILS REF datum | 16.3m (53ft) |
| 3. GP Angle | 3.0° |
| 4. ELEV of ILS-DME | 184.9m (606ft) |