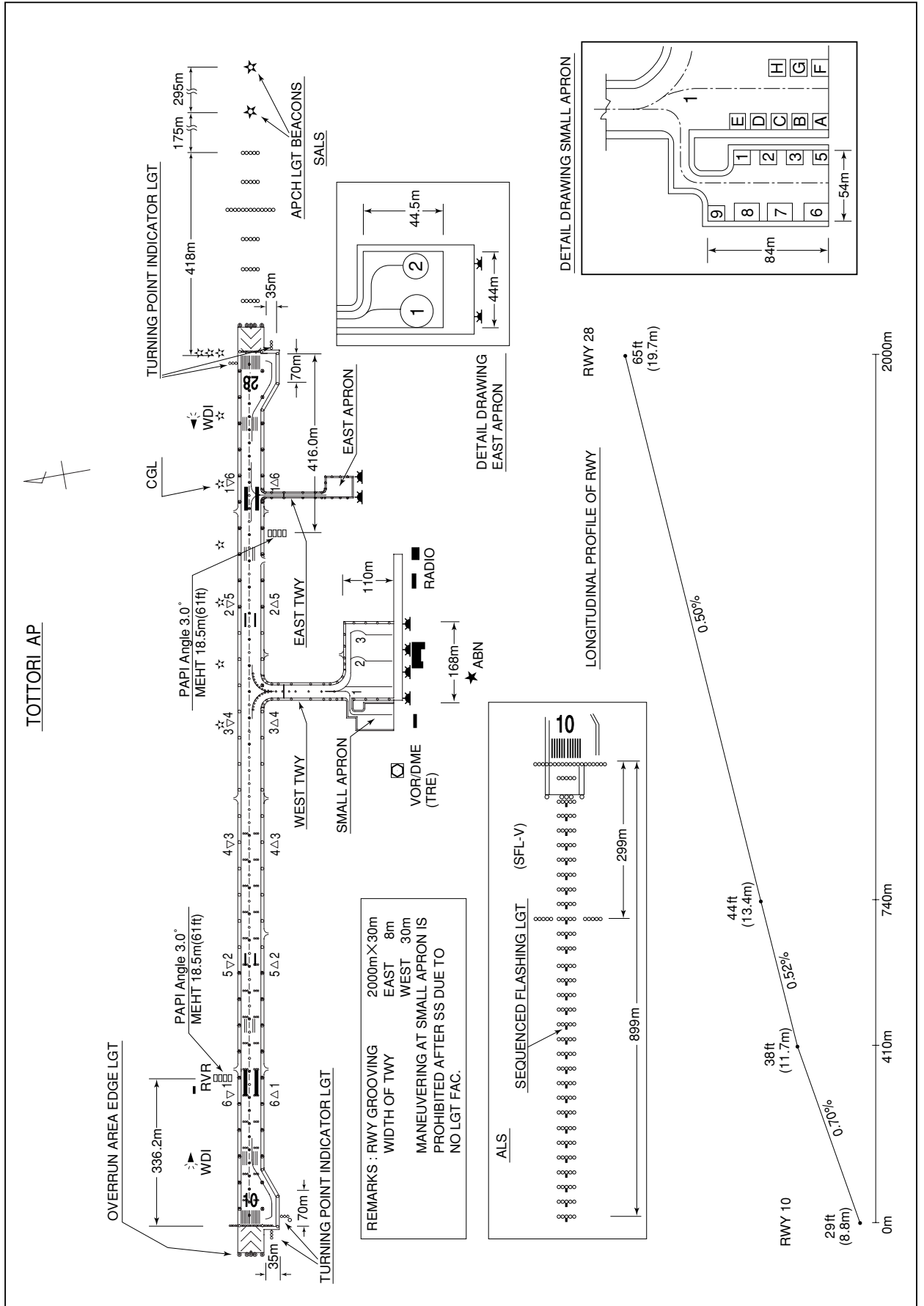


RJOR / TOTTORI

AD CHART



STANDARD DEPARTURE CHART - INSTRUMENT

RJOR / TOTTORI

SID

AYABE THREE DEPARTURE

RWY 10 : Climb RWY HDG until 500FT, turn left HDG345°...

RWY 28 : Climb RWY HDG until 500FT, turn right HDG075°...

....Climb via TRE R030 to 13.0DME, turn right to intercept YME R300 to YME VOR/DME.

Note RWY10 :5.5% climb gradient required up to 1300FT.

OBST ALT 1247FT located at 3.73NM 105° FM end of RWY10.

RWY28 :4.0% climb gradient required up to 700FT.

OBST ALT 374FT located at 2.62NM 271° FM end of RWY28.

TOTTORI REVERSAL THREE DEPARTURE

RWY 10 : Climb RWY HDG until 500FT, turn left HDG345°...

RWY 28 : Climb RWY HDG until 500FT, turn right HDG075°...

....Climb via TRE R030 to 13.0DME, turn left, direct to TRE VOR/DME.

Cross TRE VOR/DME at or above 11000FT in case of proceeding to OKC VORTAC.

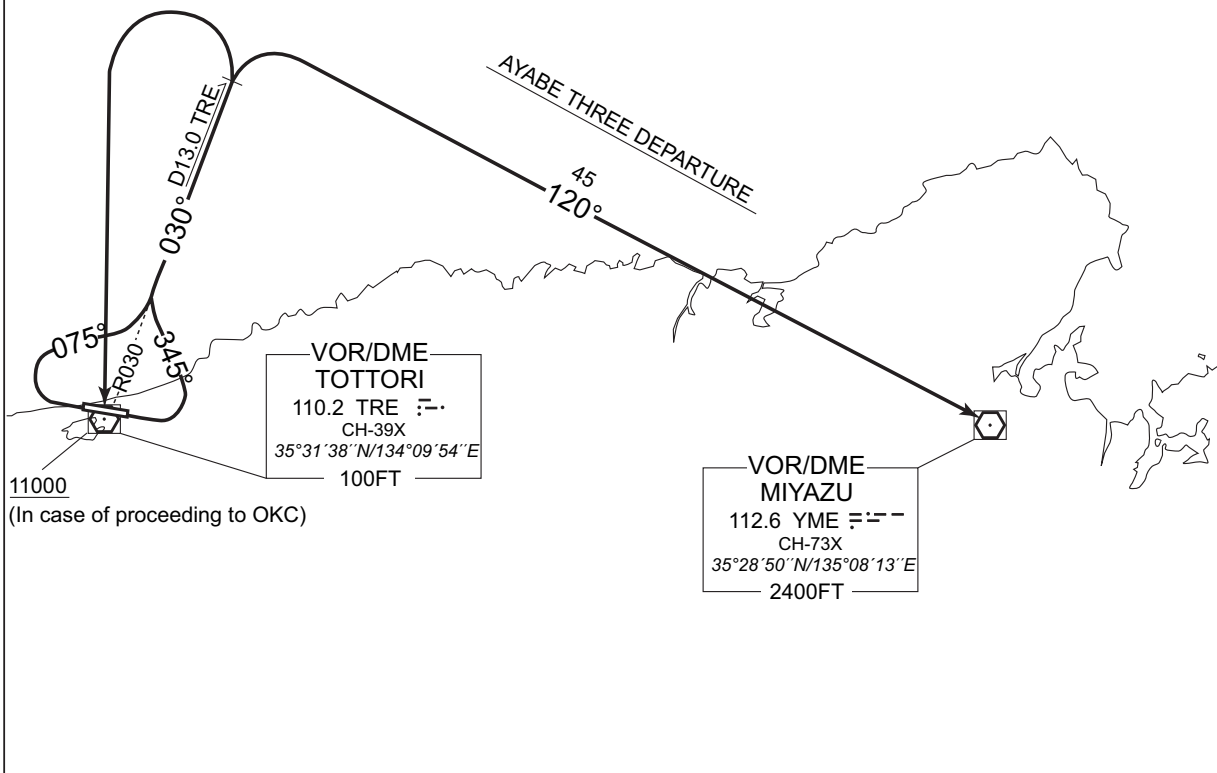
Note RWY10 :5.5% climb gradient required up to 1300FT.

OBST ALT 1247FT located at 3.73NM 105° FM end of RWY10.

RWY28 :4.0% climb gradient required up to 700FT.

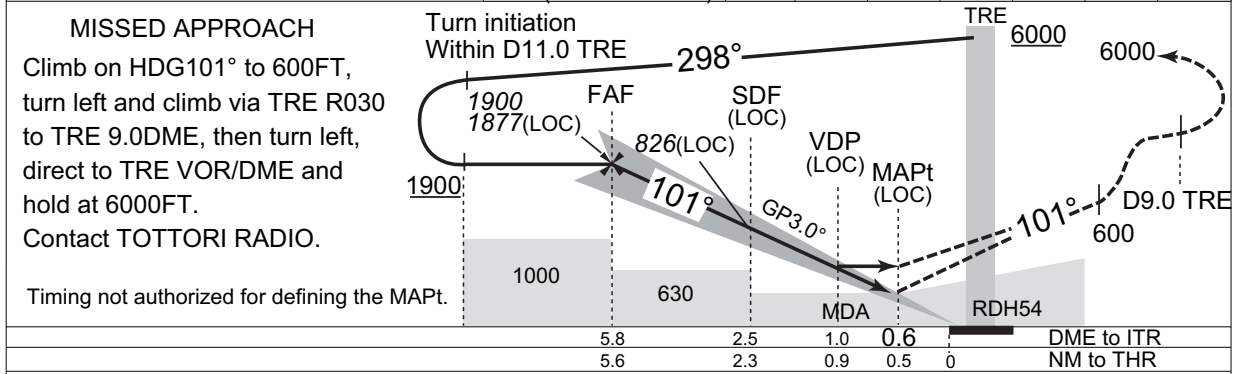
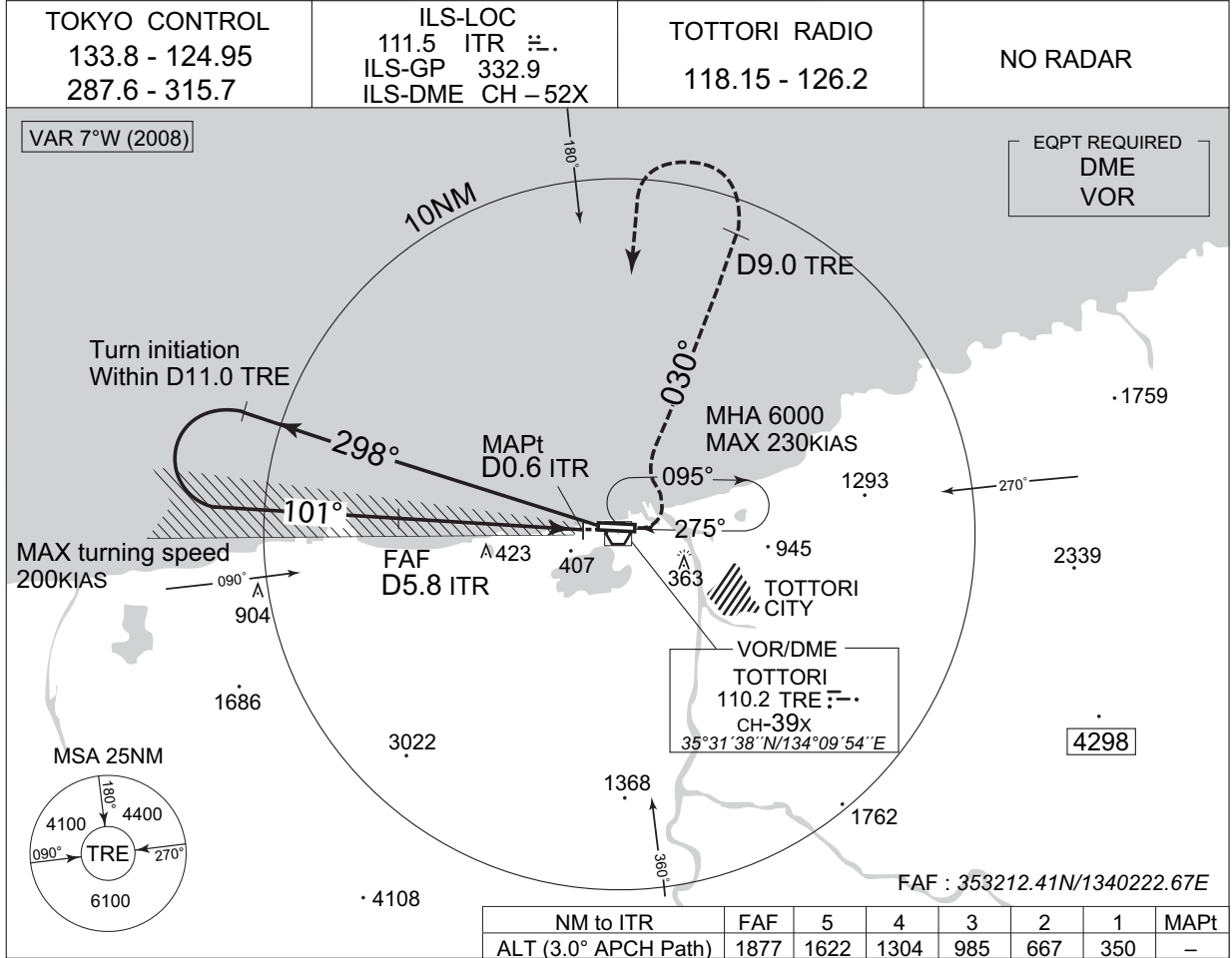
OBST ALT 374FT located at 2.62NM 271° FM end of RWY28.

TOTTORI REVERSAL THREE DEPARTURE



INSTRUMENT APPROACH CHART

RJOR / TOTTORI ILS or LOC RWY10



Missed APCH climb gradient MNM 5.0%

MINIMA		THR elev. 29	AD elev. 48				
CAT	CAT I		LOC		CIRCLING		
	DA(H)	RVR/CMV	MDA(H)	RVR/CMV	MDA(H)	VIS	
A	229 (200)	550	350 (321)	900	790 (742)	590 (542)	1600
B				1000			
C				1400	840 (792)	760 (712)	
D				1400			

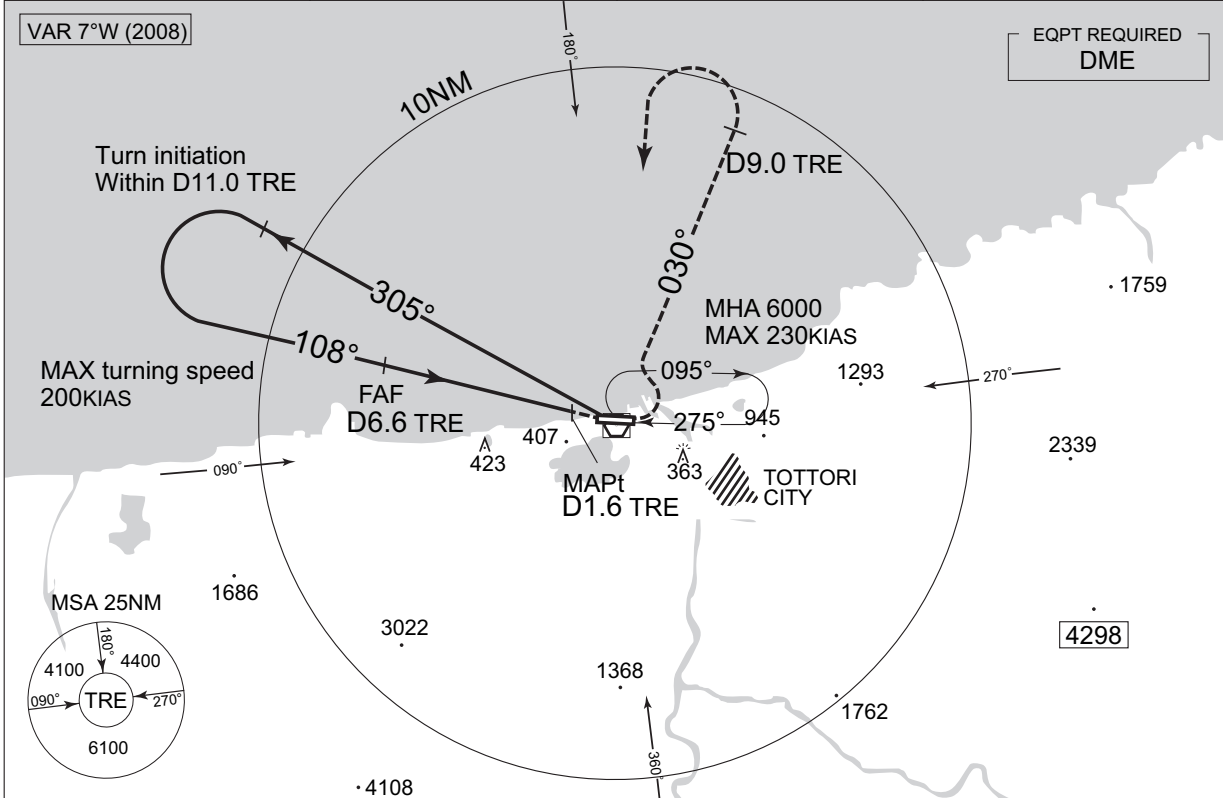
MINIMA with Missed APCH climb gradient of 2.5% are not established.

INSTRUMENT APPROACH CHART

RJOR / TOTTORI

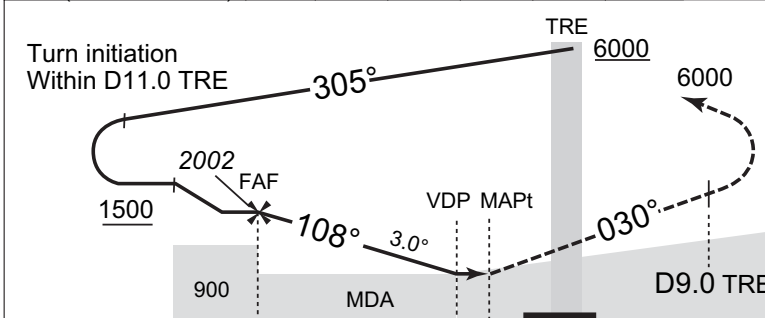
VOR RWY10

TOKYO CONTROL 133.8 - 124.95 287.6 - 315.7	TOTTORI VOR/DME 110.2 TRE 7- CH-39X 35°31'38"N/134°09'54"E	TOTTORI RADIO 118.15 - 126.2	NO RADAR
--	---	---------------------------------	----------



NM to TRE	FAF	6	5	4	3	MAPt
ALT (3.0° APCH Path)	2002	1811	1492	1174	856	-

FAF : 353253.76N/1340157.23E



MISSED APPROACH
At 1.6DME prior to TRE VOR/DME, proceed to TRE VOR/DME, turn left and climb via TRE R030 to TRE 9.0DME, then turn left, direct to TRE VOR/DME and hold at 6000FT.
Contact TOTTORI RADIO.

Timing not authorized for defining the MAPt.

DME to TRE	6.6	2.4	1.6	0
NM to THR	6.0	1.8	1.0	0

MINIMA		THR elev. 29	AD elev. 48		
CAT	MDA(H)	RVR/CMV	CIRCLING		
			TOTAL AREA	NORTH of RWY	VIS
A	630 (601)	1000	790 (742)	630 (582)	1600
B				640 (592)	
C	640 (611)	1200	840 (792)	760 (712)	2400
D	650 (621)			1600	

RJOR / TOTTORI

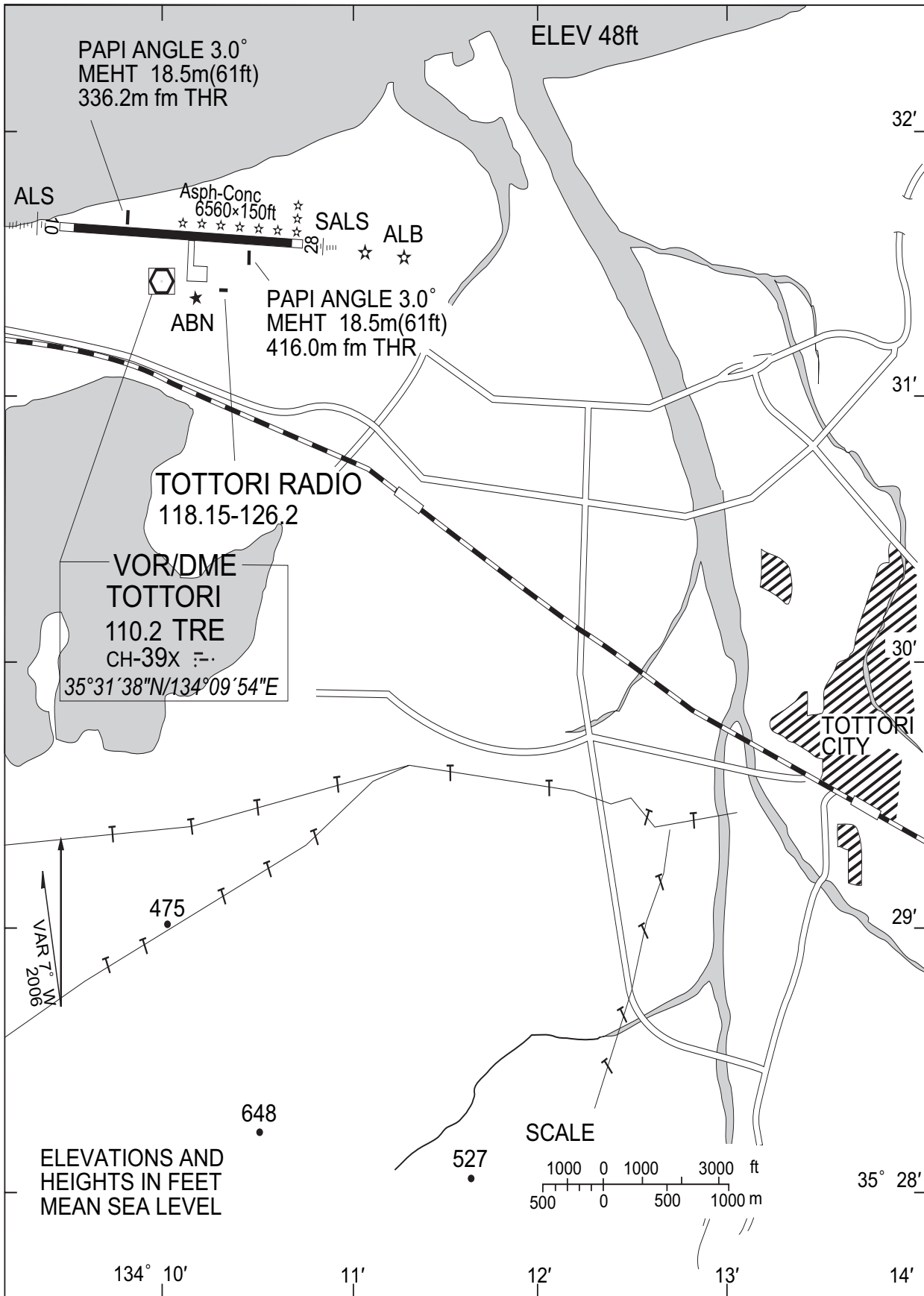
Visual REP



Call sign	BRG / DIST from ARP	Remarks
騶 馳 山 Shichiyama	073°/6.0NM	山 Mountain
浜 坂 Hamasaka	073°/14.0NM	JR 駅 Station
鳥 取 駅 Tottori eki	134°/3.5NM	JR 駅 Station
若 桜 Wakasa	141°/16.0NM	JR 駅 Station
郡 家 Kohge	156°/8.0NM	JR 駅 Station
東 郷 Tohgo	264°/14.0NM	東郷池 Pond
長 尾 鼻 Nagaobana	280°/8.0NM	岬 Cape
10NM NW	315°/10.0NM	海上 Over the sea

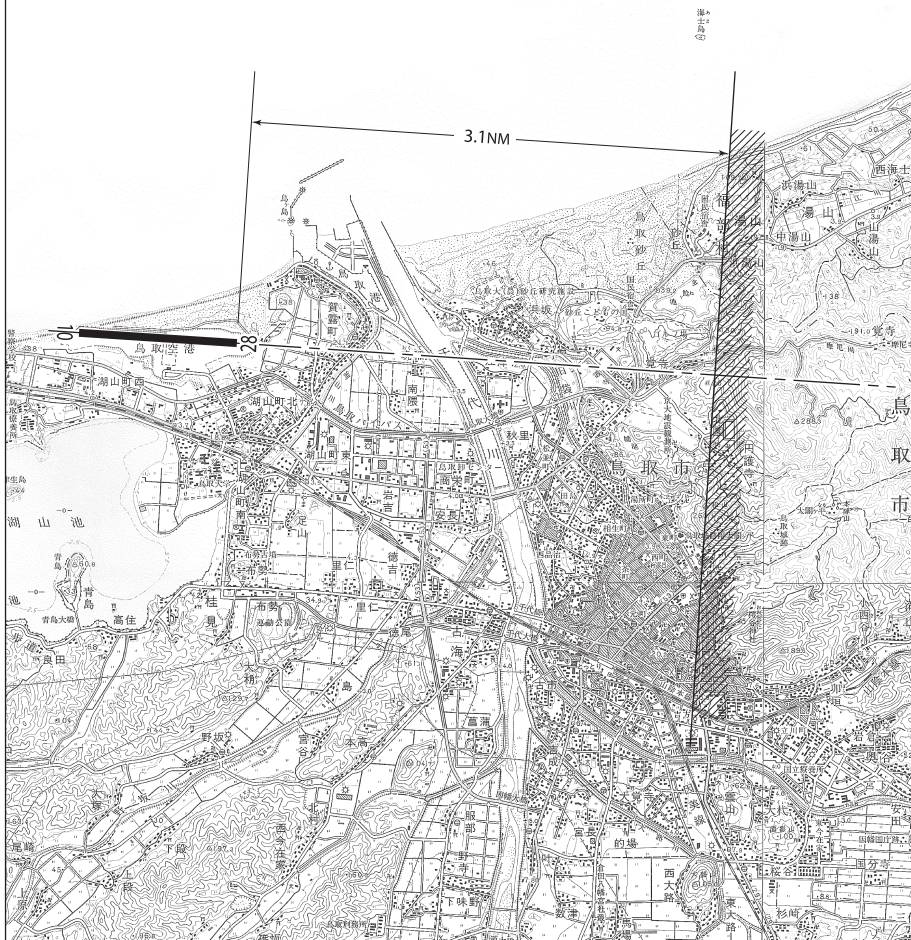
RJOR / TOTTORI

LDG CHART

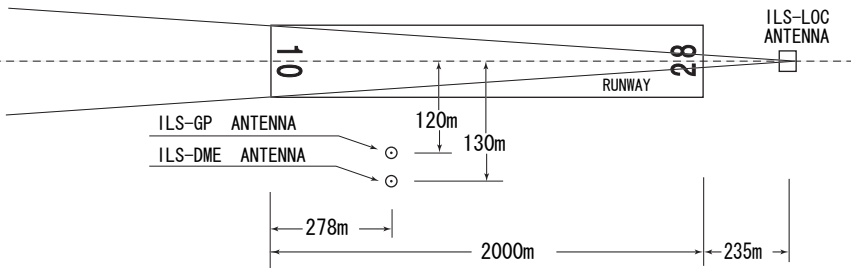


滑走路28末端側進入角指示灯の使用制限は、障害物（山）のため滑走路28末端から約3.1NM以内とする。下図のとおり。

Usable area of PAPI for runway 28 is within approx. 3.1NM from runway 28 threshold due to obstruction (mountain).



TOTTORI AIRPORT



REMARKS :	1. LOC beam BRG (MAG)	101°
	2. HGT of ILS REF datum	16.5m (54ft)
	3. GP Angle	3.0°
	4. ELEV of ILS-DME	15.4m (51ft)

B-767型機用の滑走路180° 旋回用標識及び実施要領

1. 滑走路中心線からターニングパッド中心線標識に従って進行する。
2. 転回灯1が一直線に見えるように進行し、転回灯2が一直線に見えた時転回を開始する。転回時はMAX STEERING ANGLEを使用する。

Markings for 180° turn on RWY of B-767 aircraft and Procedure using the Marking

1. Proceed along the RWY Turn Pad Center Line Marking.
2. Proceed along the RWY Turn Pad Center Line Marking to see the Turning Point Indicator Light 1 on a straight line, then commence turn at the spot where you (pilot) can see the Turning Point Indicator Light 2 on a straight line at an angle of 9 o'clock. When turning, take MAX STEERING ANGLE.

