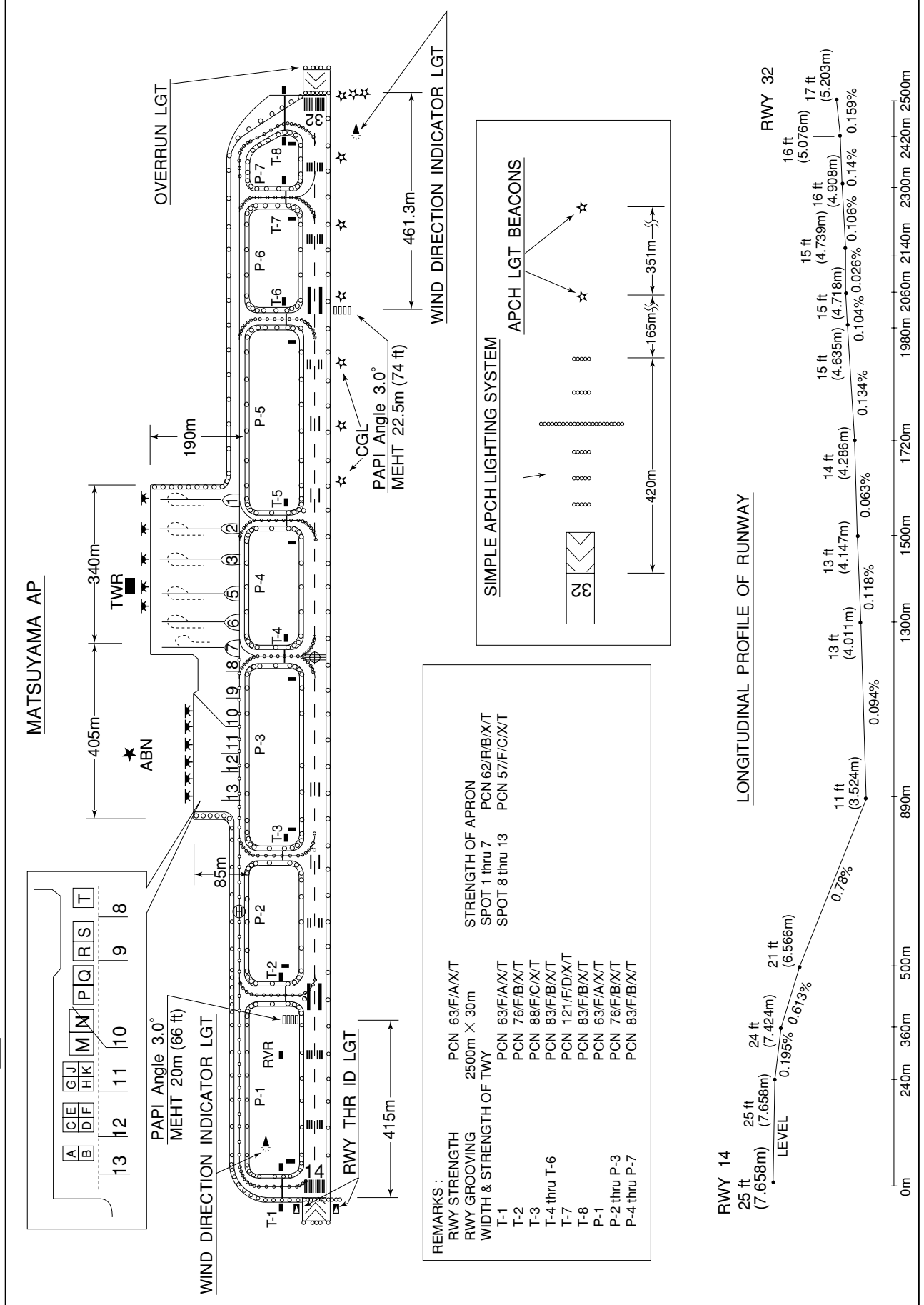


RJOM / MATSUYAMA

AD CHART



STANDARD DEPARTURE CHART -INSTRUMENT

RJOM / MATSUYAMA

SID and TRANSITION

MATSUYAMA REVERSAL THREE DEPARTURE

RWY32 : Turn left, climb on HDG 270DEG to 3,000FT or above, turn left,....

RWY14 : Climb RWY HDG to 500 FT or above, turn right within 3NM, climb on HDG 270DEG to 3,000FT or above, turn right,....

....proceed to MPE VOR/DME within MPE 15DME.

Cross MPE VOR/DME at or above 6,000 FT.

MALTA TRANSITION

After MPE VOR/DME, proceed via MPE R-077 to MALTA.

Cross MALTA at or above 9,000FT.

KOCHI TRANSITION

After MPE VOR/DME, proceed via MPE R-115 to KRE VOR/DME via ROCKY.

KUGA TRANSITION

After MPE VOR/DME, proceed via MPE R-306 to IWC VORTAC.

Cross MPE R-306/15DME at assigned altitude.

SHONO ONE DEPARTURE

RWY32 : Turn left,....

RWY14 : Climb RWY HDG to 500 FT or above, turn right within 3NM,...

....climb via MPE R-242 to SHONO.

Cross SHONO at assigned altitude.

KRETA ONE DEPARTURE

RWY32 : Climb RWY HDG to 500FT or above, turn left,....

RWY14 : Climb RWY HDG to 500 FT or above, turn right within 3NM,...

....proceed to MPE VOR/DME, then via MPE R-353 to KRETA.

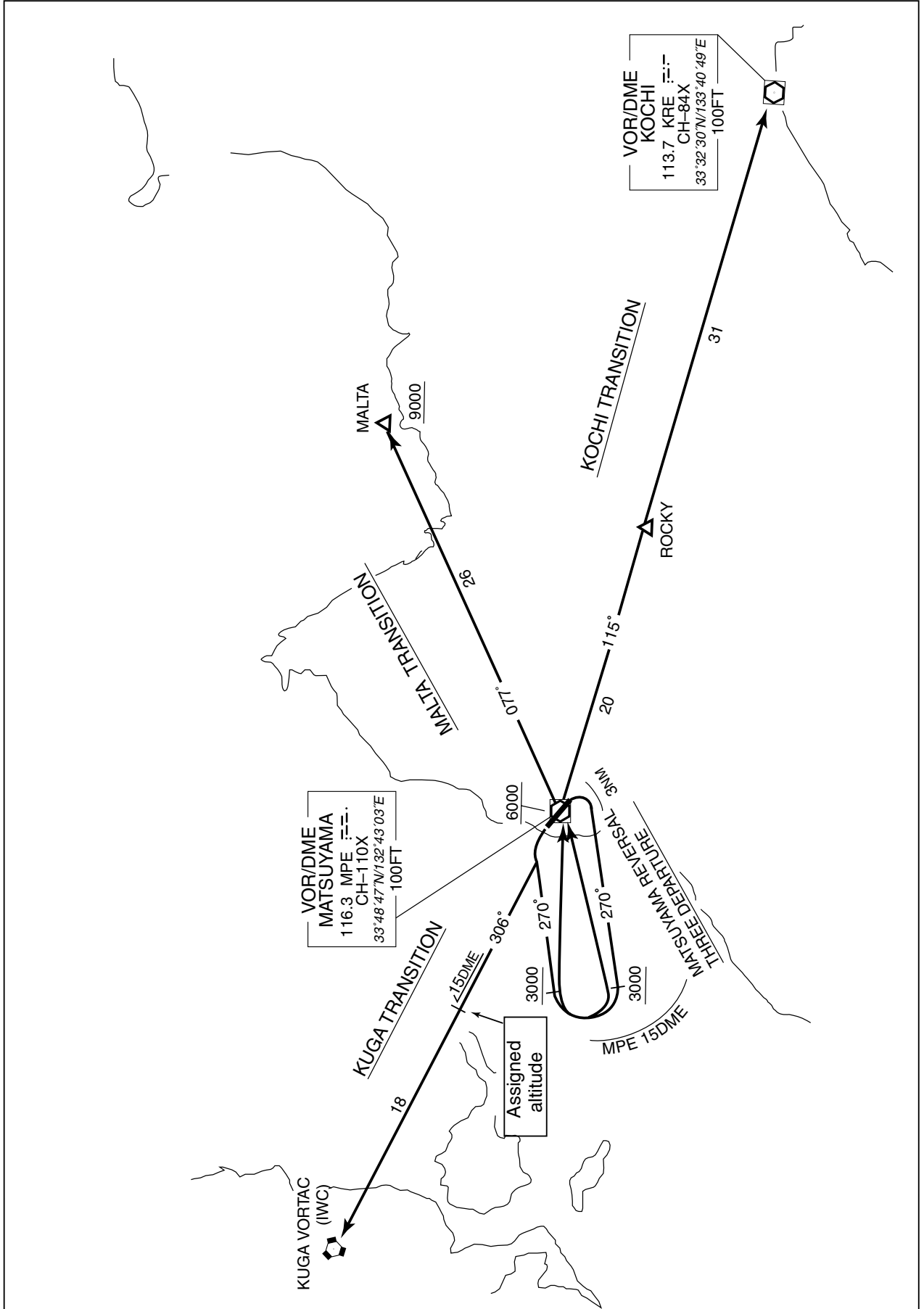
Cross MPE VOR/DME at or above 2,000 FT,

cross MPE R-353/15DME at assigned altitude.

STANDARD DEPARTURE CHART -INSTRUMENT

RJOM / MATSUYAMA

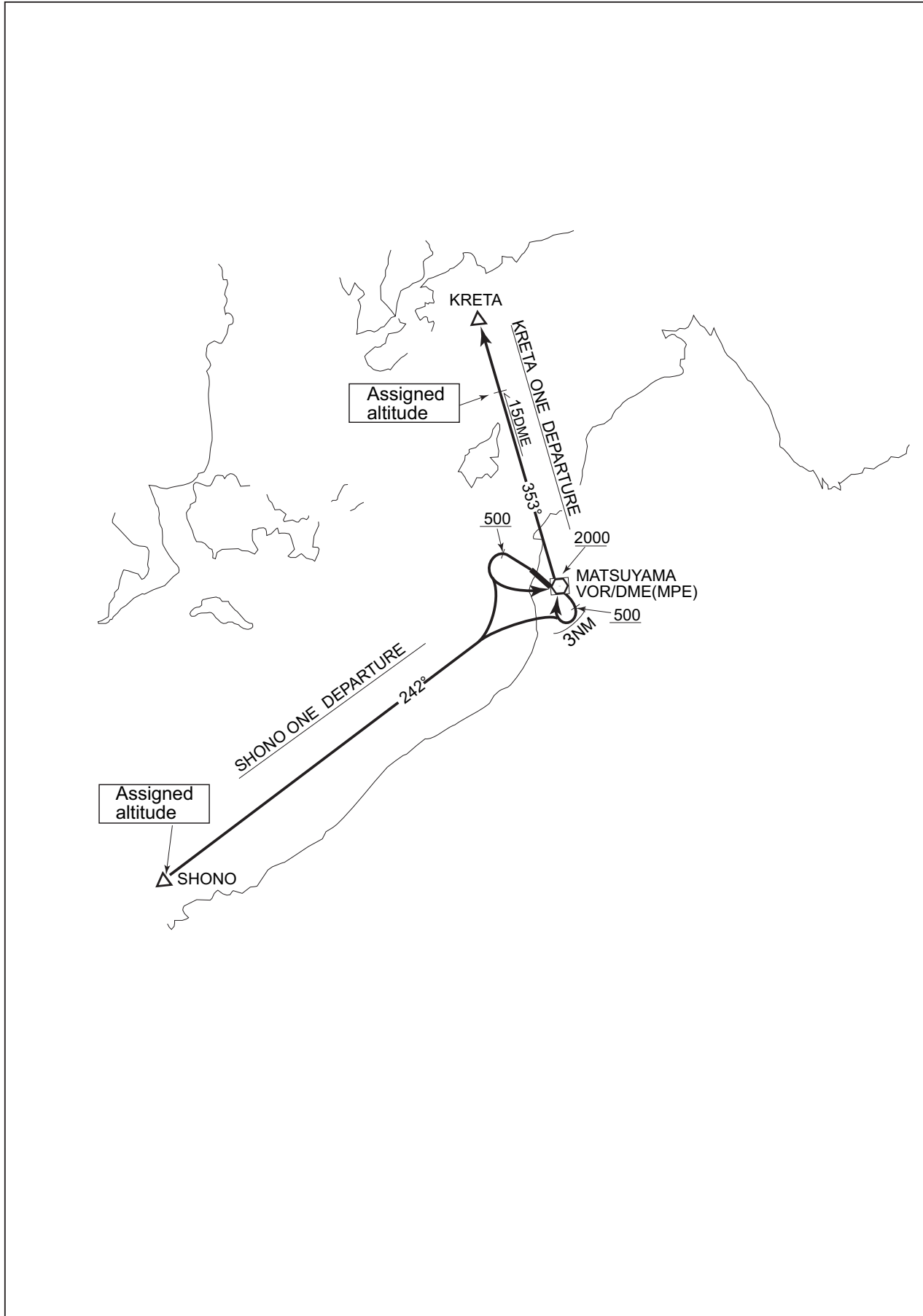
SID and TRANSITION



STANDARD DEPARTURE CHART -INSTRUMENT

RJOM / MATSUYAMA

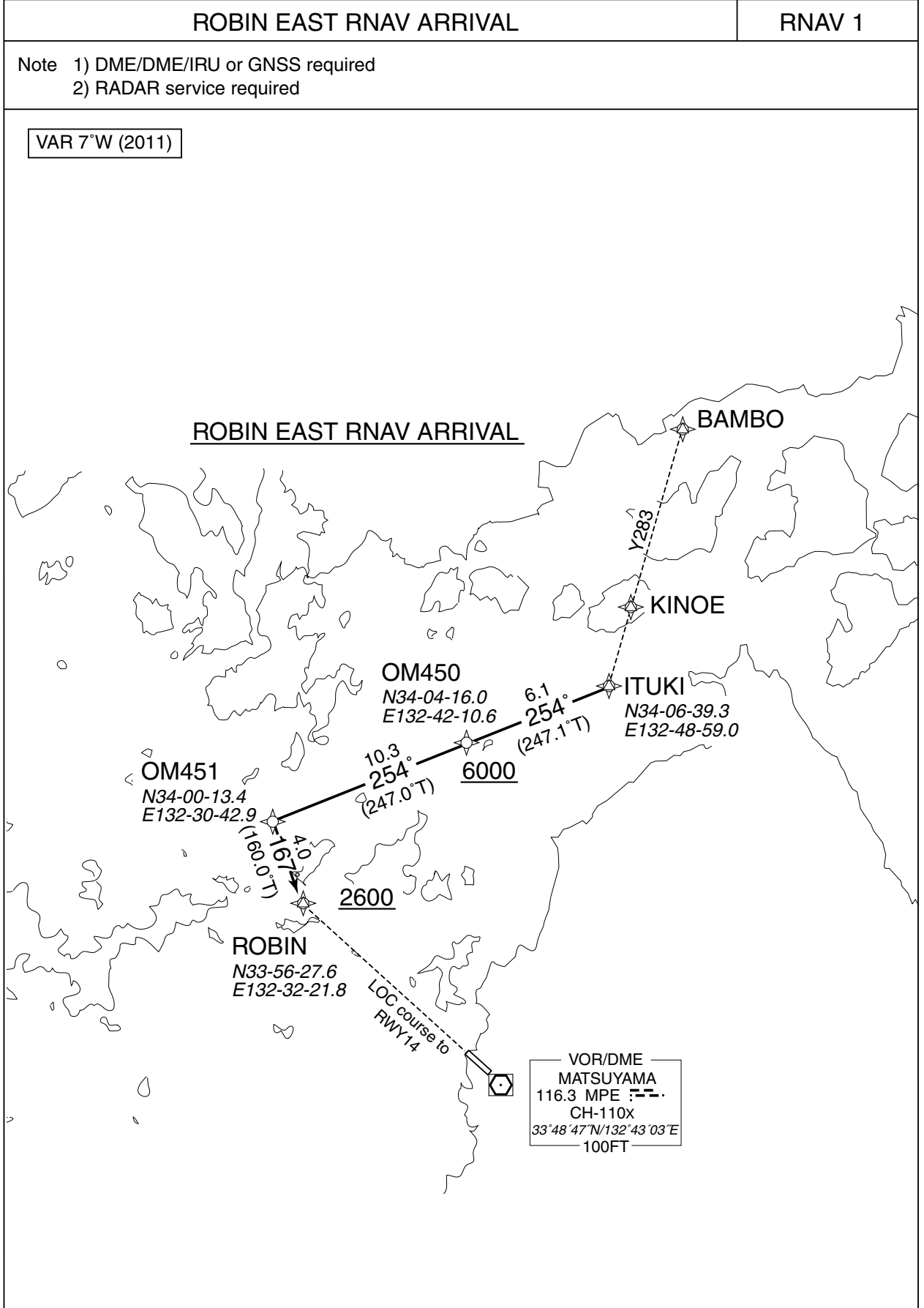
SID



STANDARD ARRIVAL CHART -INSTRUMENT

RJOM / MATSUYAMA

➔ RNAV STAR RWY14



STANDARD ARRIVAL CHART -INSTRUMENT

RJOM / MATSUYAMA

➔ RNAV STAR RWY14

ROBIN EAST RNAV ARRIVAL

From ITUKI, to OM450 at or above 6000FT, to OM451, to ROBIN at or above 2600FT.

FIX	DESIGNATION	COORDINATES
	ITUKI	340639.3N 1324859.0E
	OM450	340416.0N 1324210.6E
	OM451	340013.4N 1323042.9E
	ROBIN	335627.6N 1323221.8E
Critical DME	-	
DME GAP	-	
Inappropriate Nav aids	See AD1.1.6.10.3. Inappropriate NAVAIDs for RNAV1	

Rcmd. Path Terminator	Fix ID (Waypoint Name)	Fly Over	Distance (NM)	MAG Track (TRUE Track)	Turn Direction	Altitude (FT)	Speed Limit (KIAS)	Vertical Angle	Navigation Performance
IF	ITUKI	—	—	—	—	—	—	—	RNAV1
TF	OM450	—	6.1	254° (247.1°)	—	+6000	—	—	RNAV1
TF	OM451	—	10.3	254° (247.0°)	—	—	—	—	RNAV1
TF	ROBIN	—	4.0	167° (160.0°)	—	+2600	—	—	RNAV1

STANDARD ARRIVAL CHART -INSTRUMENT

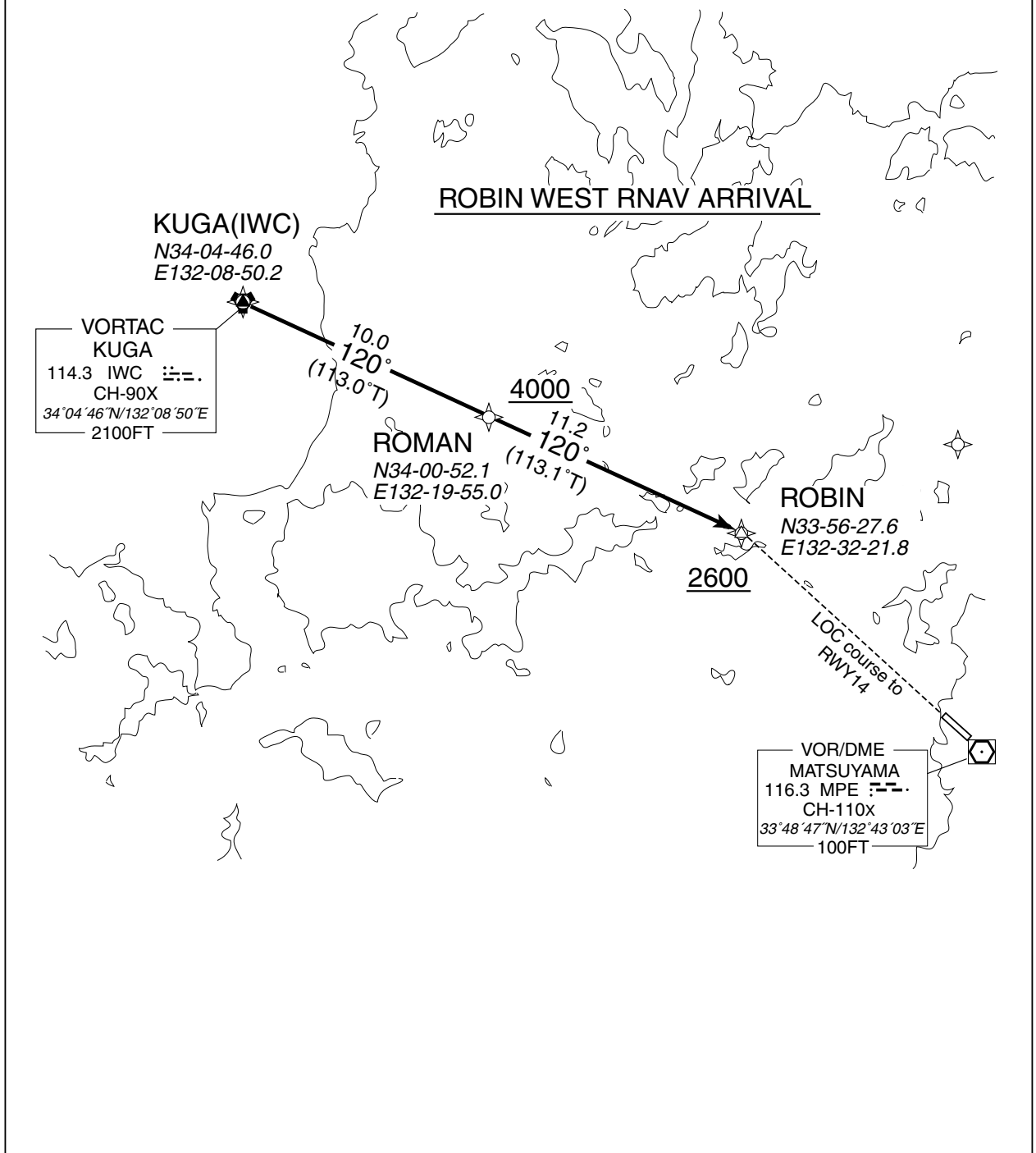
RJOM / MATSUYAMA

➔ RNAV STAR RWY14

ROBIN WEST RNAV ARRIVAL	RNAV 1
--------------------------------	---------------

Note 1) DME/DME/IRU or GNSS required
2) RADAR service required

VAR 7°W (2011)



STANDARD ARRIVAL CHART -INSTRUMENT

RJOM / MATSUYAMA

➔ RNAV STAR RWY14

ROBIN WEST RNAV ARRIVAL

From KUGA(IWC), to ROMAN at or above 4000FT, to ROBIN at or above 2600FT.

FIX	DESIGNATION	COORDINATES
	KUGA(IWC)	340446.0N 1320850.2E
	ROMAN	340052.1N 1321955.0E
	ROBIN	335627.6N 1323221.8E
Critical DME	MPE	IWC - 7NM to ROMAN
DME GAP	-	
Inappropriate Nav aids	See AD1.1.6.10.3. Inappropriate NAVAIDs for RNAV1	

Rcmd. Path Terminator	Fix ID (Waypoint Name)	Fly Over	Distance (NM)	MAG Track (TRUE Track)	Turn Direction	Altitude (FT)	Speed Limit (KIAS)	Vertical Angle	Navigation Performance
IF	KUGA (IWC)	—	—	—	—	—	—	—	RNAV1
TF	ROMAN	—	10.0	120° (113.0°)	—	+4000	—	—	RNAV1
TF	ROBIN	—	11.2	120° (113.1°)	—	+2600	—	—	RNAV1

STANDARD ARRIVAL CHART - INSTRUMENT

RJOM / MATSUYAMA

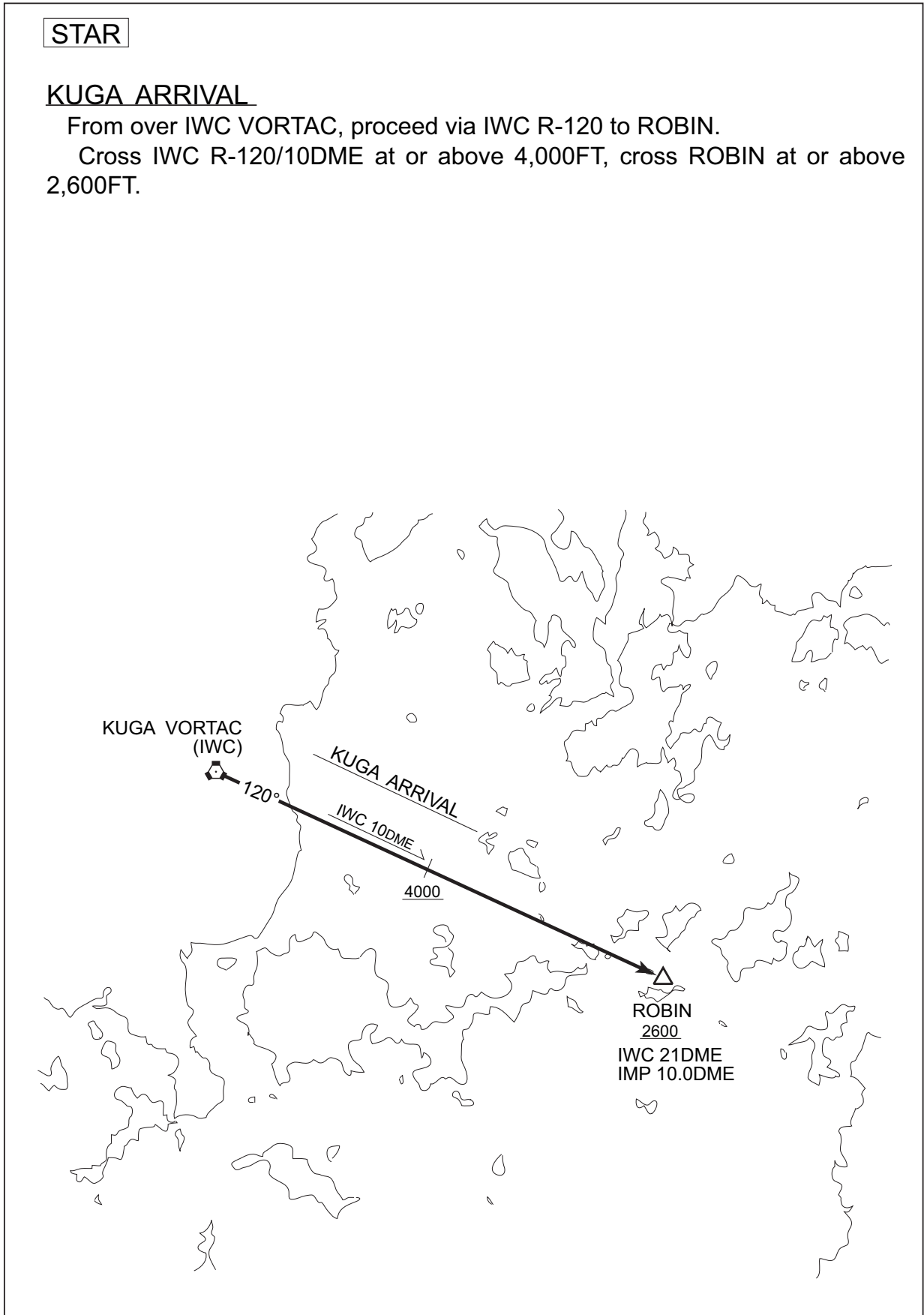
STAR

STAR

KUGA ARRIVAL

From over IWC VORTAC, proceed via IWC R-120 to ROBIN.

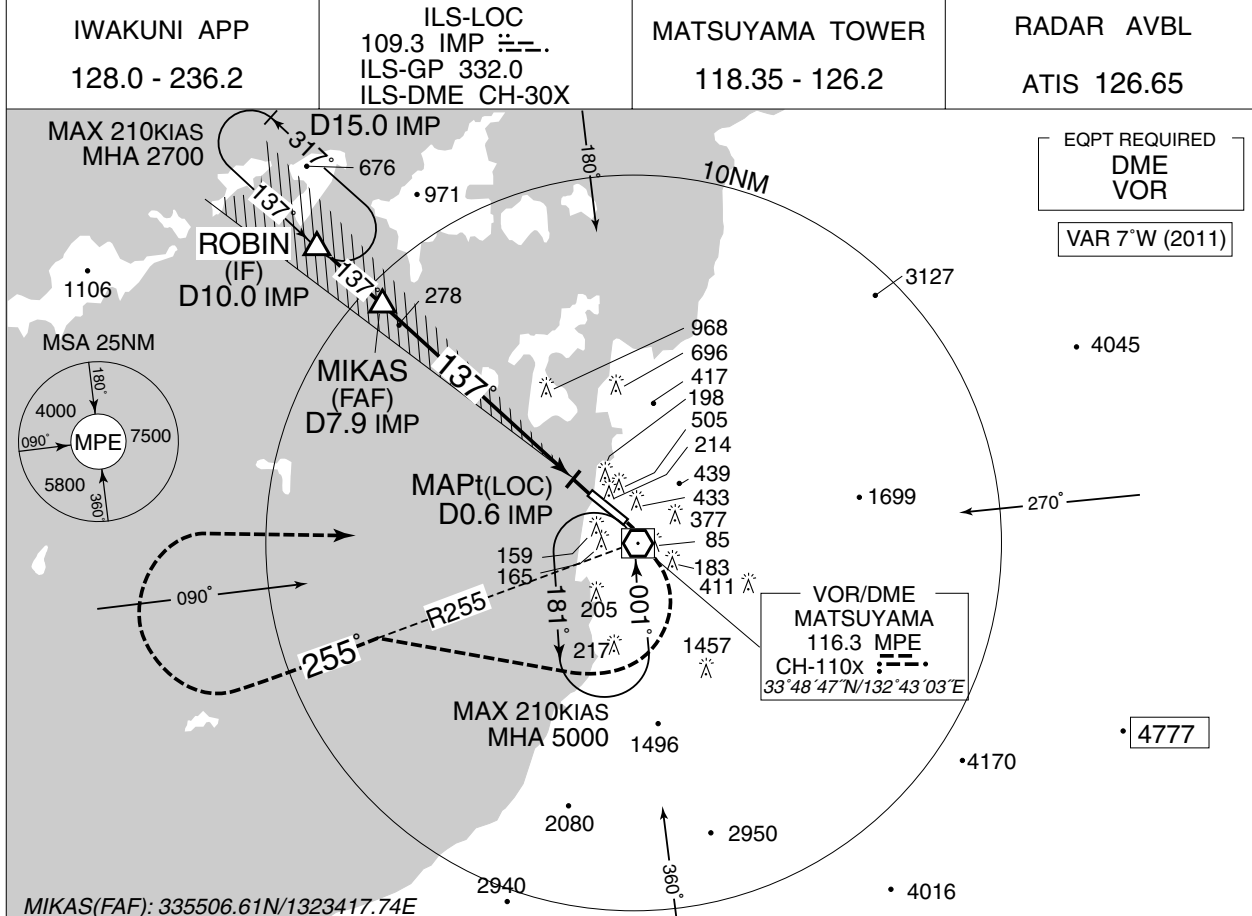
Cross IWC R-120/10DME at or above 4,000FT, cross ROBIN at or above 2,600FT.



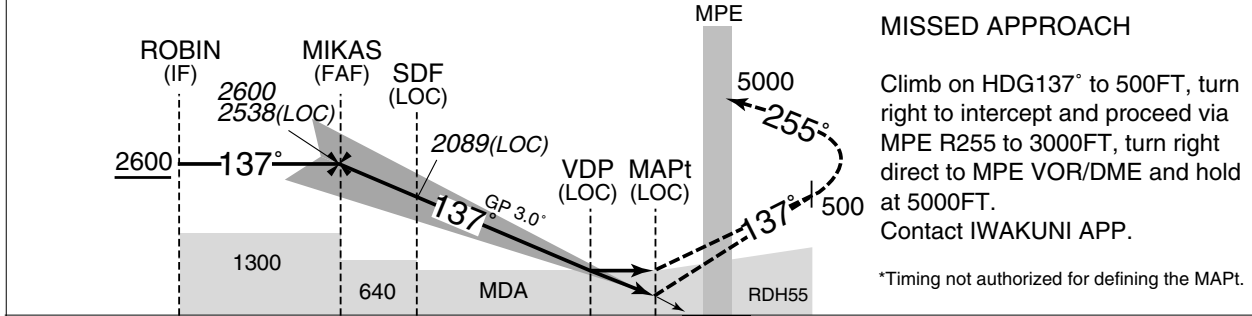
INSTRUMENT APPROACH CHART

RJOM / MATSUYAMA

ILS Z or LOC Z RWY 14



NM to IMP	FAF	7	6	5	4	3	2	MAPt
ALT (3.0° APCH Path)	2538	2248	1930	1612	1293	975	656	-



DME to IMP	10.0	7.9	6.5	1.5	0.6	0
NM to THR	9.8	7.7	6.3	1.3	0.4	0

Missed APCH climb gradient MNM 4.0%.

MINIMA		THR elev. 25		AD elev. 13		
CAT	CAT I		LOC		CIRCLING	
	DA(H)	RVR/CMV	MDA(H)	RVR/CMV	MDA(H)	VIS
A	225 (200)	1000	470 (457)	1500	520 (507)	1600
B						
C				2000	570 (557)	2400
D						3200

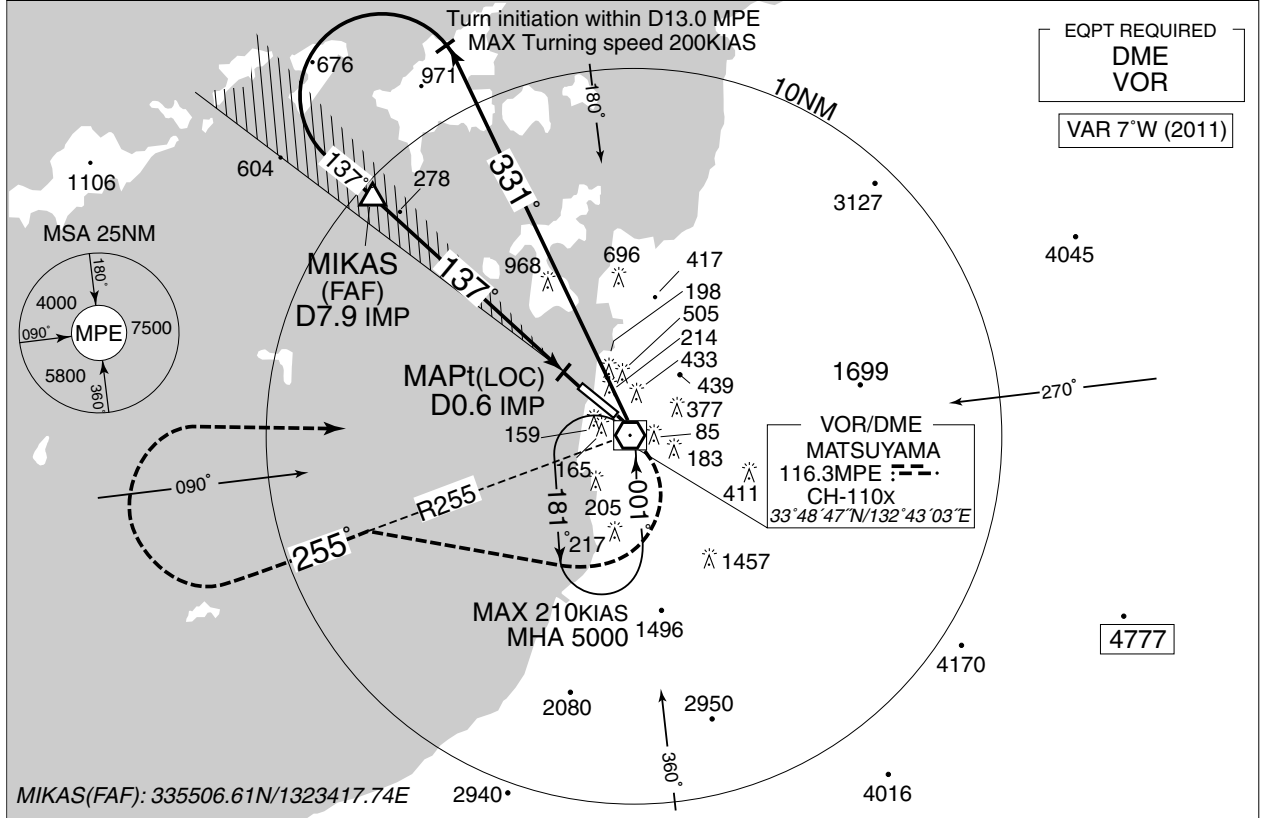
MINIMA with Missed APCH climb gradient of 2.5% are not established. Circling to WEST side of RWY only.

INSTRUMENT APPROACH CHART

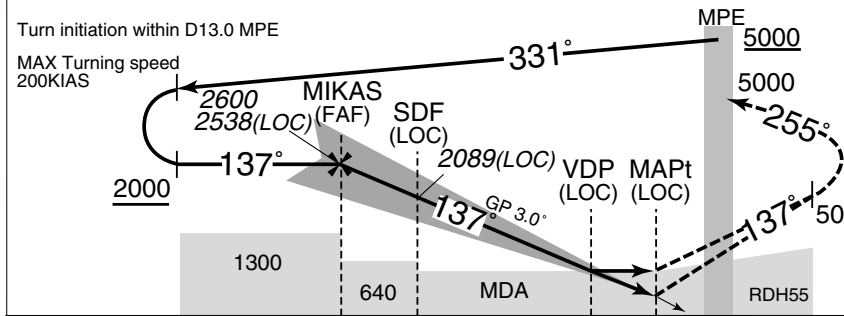
RJOM / MATSUYAMA

ILS Y or LOC Y RWY 14

IWAKUNI APP 128.0 - 236.2	ILS-LOC 109.3 IMP ILS-GP 332.0 ILS-DME CH-30X	MATSUYAMA TOWER 118.35 - 126.2	RADAR AVBL ATIS 126.65
------------------------------	--	-----------------------------------	---------------------------



NM to IMP	FAF	7	6	5	4	3	2	MAPt
ALT (3.0° APCH Path)	2538	2248	1930	1612	1293	975	656	-



MISSED APPROACH

Climb on HDG137° to 500FT, turn right to intercept and proceed via MPE R255 to 3000FT, turn right direct to MPE VOR/DME and hold at 5000FT.
Contact IWAKUNI APP.

*Timing not authorized for defining the MAPt.

DME to IMP	7.9	6.5	1.5	0.6	0
NM to THR	7.7	6.3	1.3	0.4	0

Missed APCH climb gradient MNM 4.0%.

MINIMA		THR elev. 25		AD elev. 13		
CAT	CAT I		LOC		CIRCLING	
	DA(H)	RVR/CMV	MDA(H)	RVR/CMV	MDA(H)	VIS
A	225 (200)	1000	470 (457)	1500	520 (507)	1600
B						2400
C				2000	3200	
D				570 (557)		

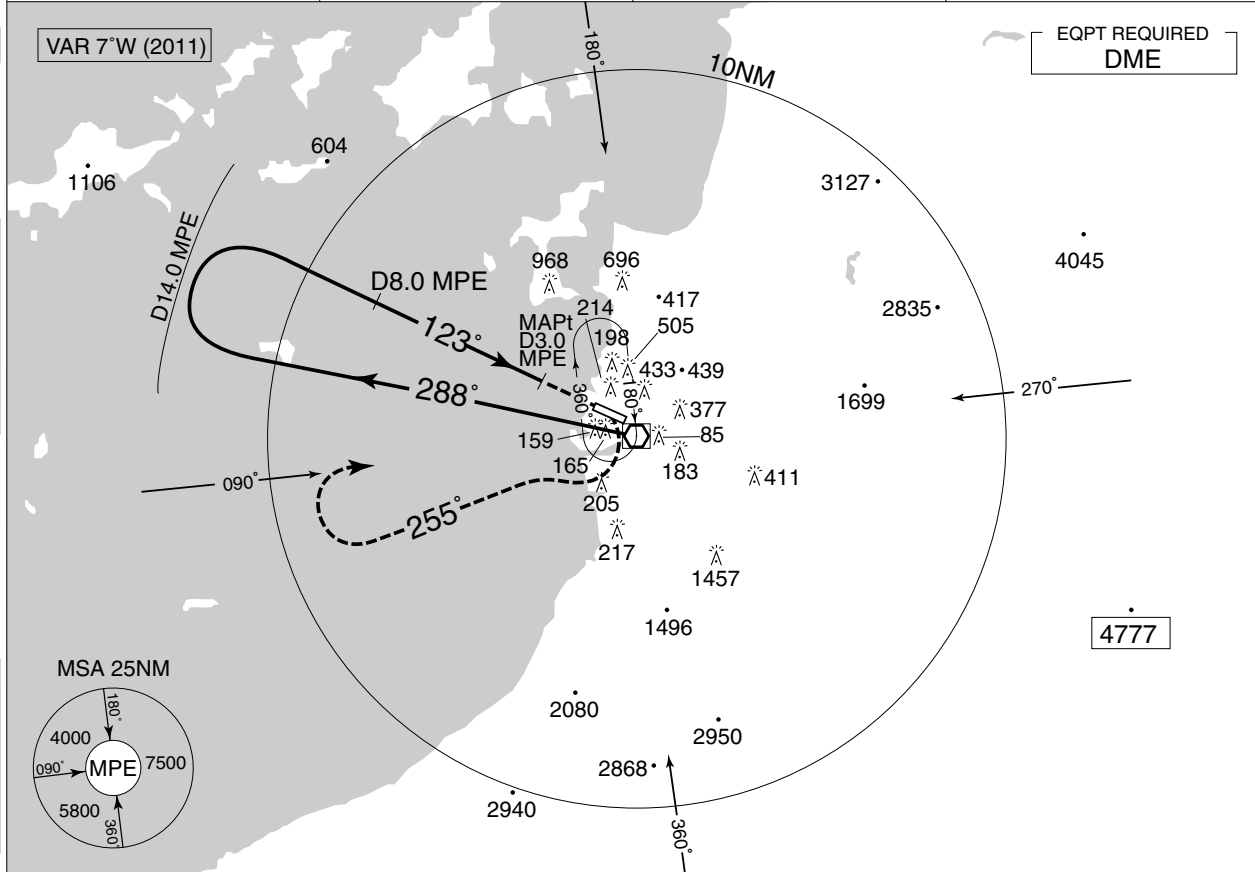
MINIMA with Missed APCH climb gradient of 2.5% are not established.
Circling to WEST side of RWY only.

INSTRUMENT APPROACH CHART

RJOM / MATSUYAMA

VOR A

IWAKUNI APP 128.0 – 236.2	MATSUYAMA VOR/DME 116.3 MPE CH-110X 33°48'47"N/132°43'03"E	MATSUYAMA TOWER 118.35 – 126.2	RADAR AVAILABLE ATIS 126.65
------------------------------	---	-----------------------------------	--------------------------------



<p>Remain within D14.0 MPE</p>	<p>MISSED APPROACH</p> <p>Turn right climb via MPE R255 to 3000FT, turn right direct to MPE VOR/DME within MPE 10.0DME and hold at 4000FT.</p> <p>Contact IWAKUNI APP.</p>
--------------------------------	---

MINIMA		AD elev. 13
CAT	CIRCLING	
	MDA(H)	VIS
A	520 (507)	1600
B		2400
C		
D	570 (557)	3200

Circling to WEST side of RWY only.

RJOM / MATSUYAMA

Visual REP



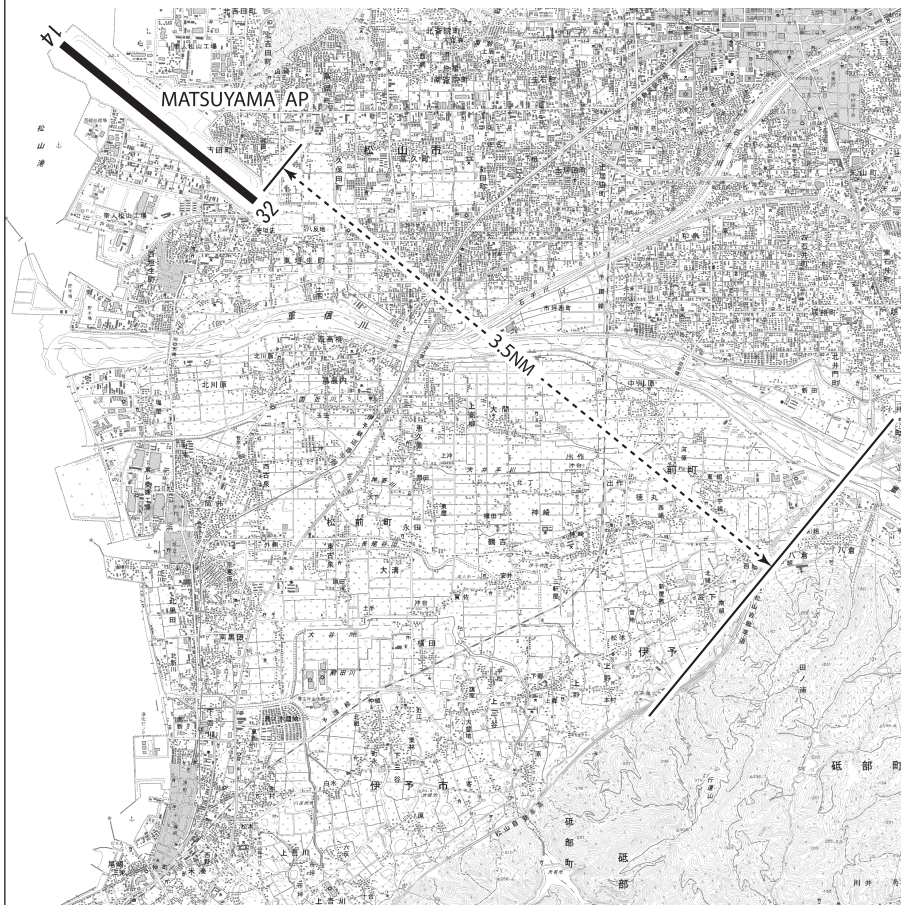
Call sign	BRG / DIST from ARP	Remarks
堀江 Horie	033°/5.4NM	堀江港 Horie harbor
松山シティー Matsuyama City	076°/3.4NM	松山城 Matsuyama castle
森松 Morimatsu	124°/5.0NM	森松町重信橋 Shigenobu bridges in Morimatsu cho
サウスポイント South Point	199°/5.1NM	伊予市南部森川河口 Mori river-mouth in the southern part of Iyo city

INTENTIONALLY LEFT BLANK

PAPI

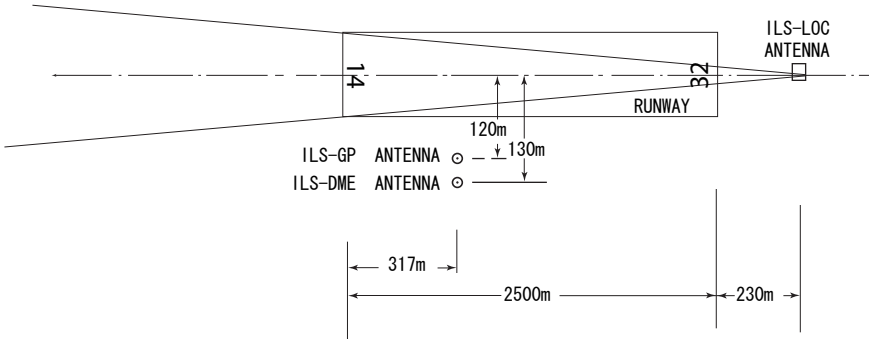
注 : 滑走路32末端側の進入角表示灯の使用範囲は、障害物（山及び樹木）のため滑走路32末端から3.5NM以内とする。

Note : Usable area of PAPI for runway 32 is within 3.5NM from runway 32 threshold due to obstructions (mountain and trees).



MATSUYAMA AIRPORT

ILS



- REMARKS :
- | | |
|---------------------------|--------------|
| 1. ILS-LOC beam BRG (MAG) | 137° |
| 2. HGT of ILS REF datum | 16.6m (55ft) |
| 3. ILS-GP angle | 3.0° |
| 4. ELEV of ILS-DME | 12.1m (40ft) |