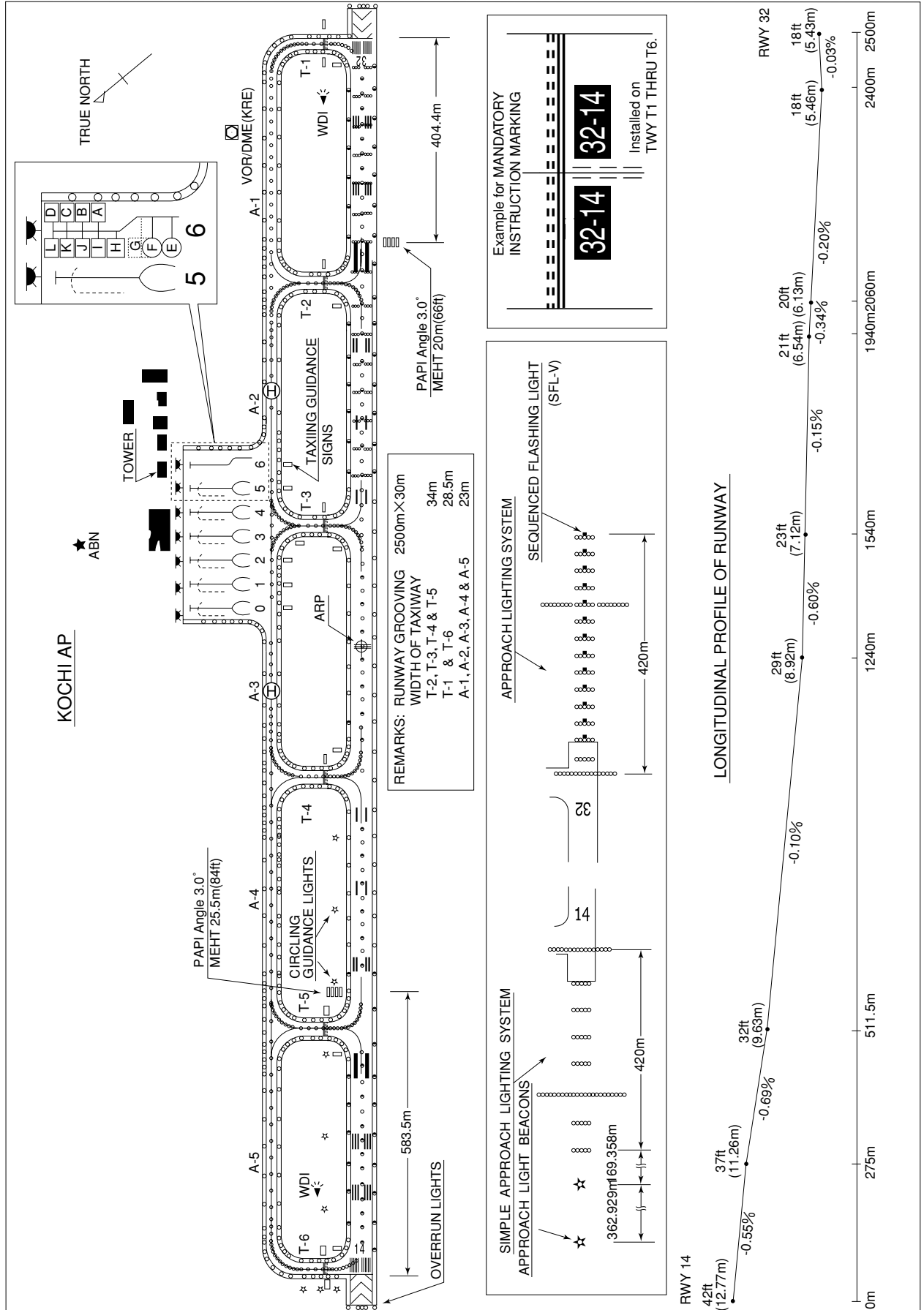


RJOK / KOCHI

AD CHART



STANDARD DEPARTURE CHART - INSTRUMENT

RJOK / KOCHI

➔ SID

RYOMA SIX DEPARTURE

RWY 14 : Climb RWY HDG to 500FT, turn right....

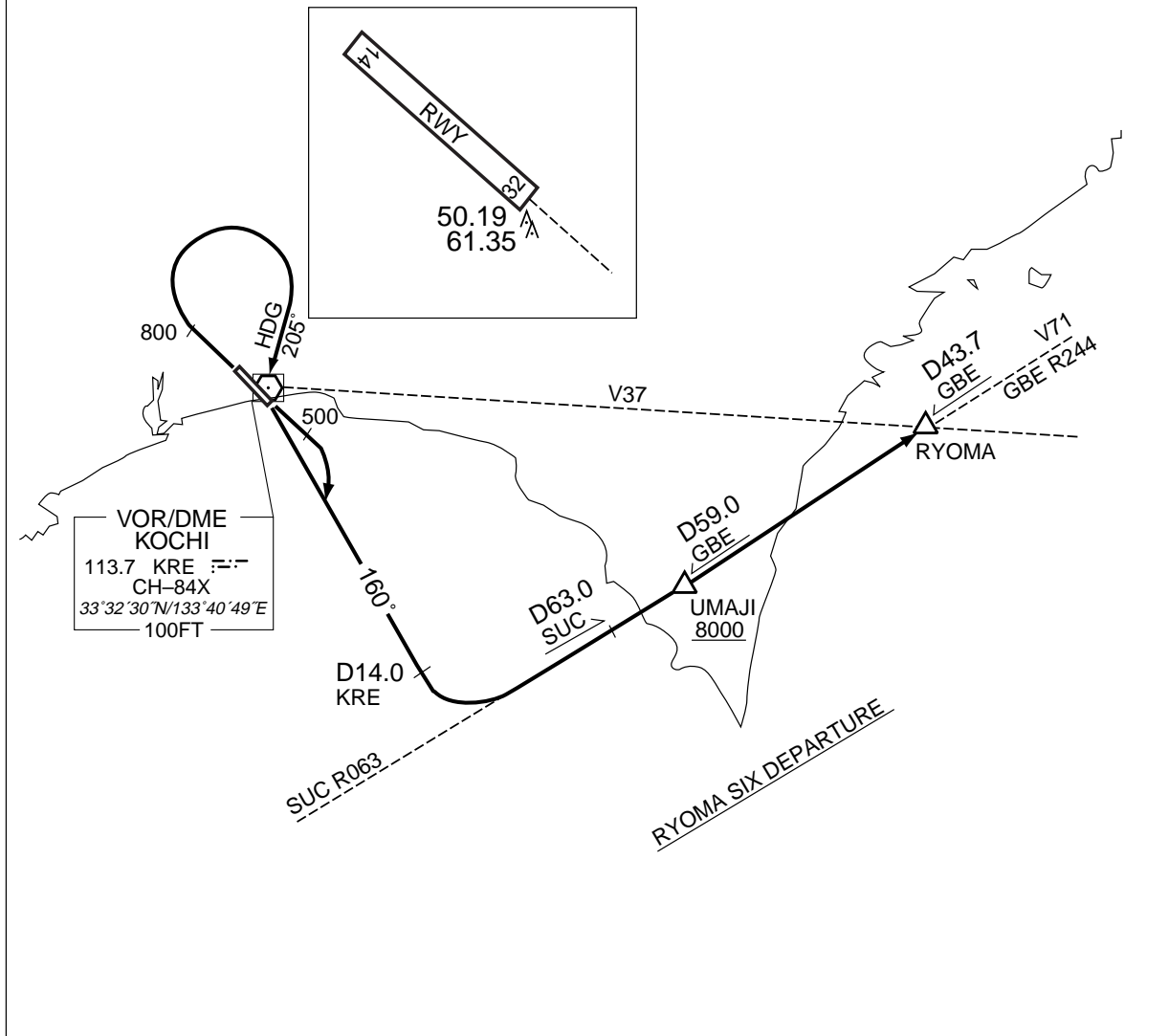
RWY 32 : Climb RWY HDG to 800FT, trun right HDG 205°....

....to intercept and proceed via KRE R160 to KRE 14.0DME, turn left to intercept and proceed via SUC R063 to SUC 63.0DME, proceed via GBE R244 to RYOMA, via UMAJI.

Cross UMAJI at or above 8000FT.

Note RWY32 : 6.0% climb gradient required up to 2500FT.

OBST ALT 2165FT located at 6.6NM 358° FM end of RWY32.



STANDARD DEPARTURE CHART - INSTRUMENT

RJOK / KOCHI

SID

SHIMIZU FIVE DEPARTURE

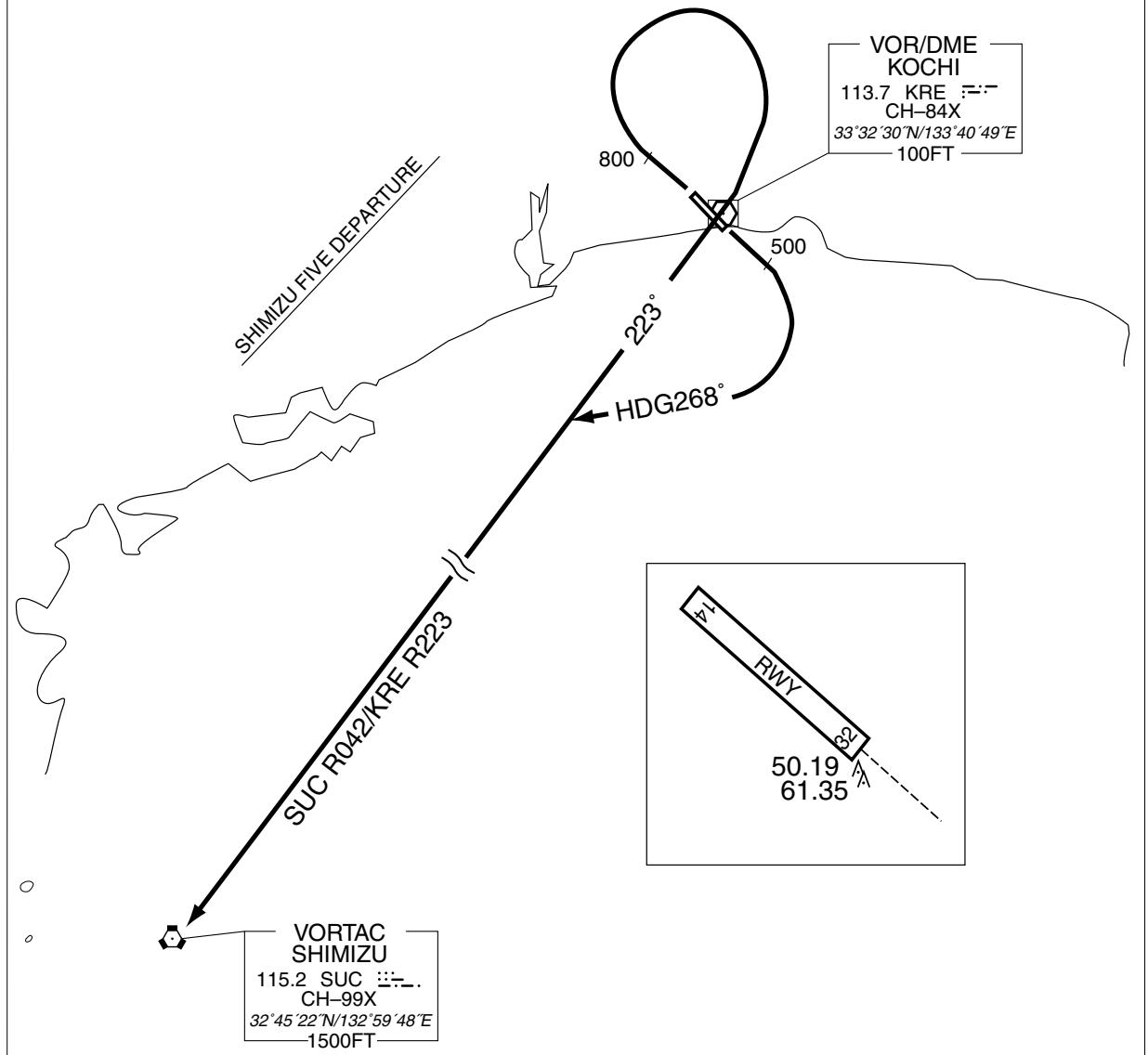
RWY 14 : Climb RWY HDG to 500FT, turn right HDG 268°....

RWY 32 : Climb RWY HDG to 800FT, turn right....

....to intercept and proceed via KRE R223/SUC R042 to SUC VORTAC.

Note RWY32 : 6.0% climb gradient required up to 2500FT.

OBST ALT 2165FT located at 6.6NM 358° FM end of RWY32.



STANDARD DEPARTURE CHART - INSTRUMENT

RJOK / KOCHI

➔ SID

KOCHI REVERSAL FIVE DEPARTURE

RWY 14 : Climb RWY HDG to 500FT, turn right....

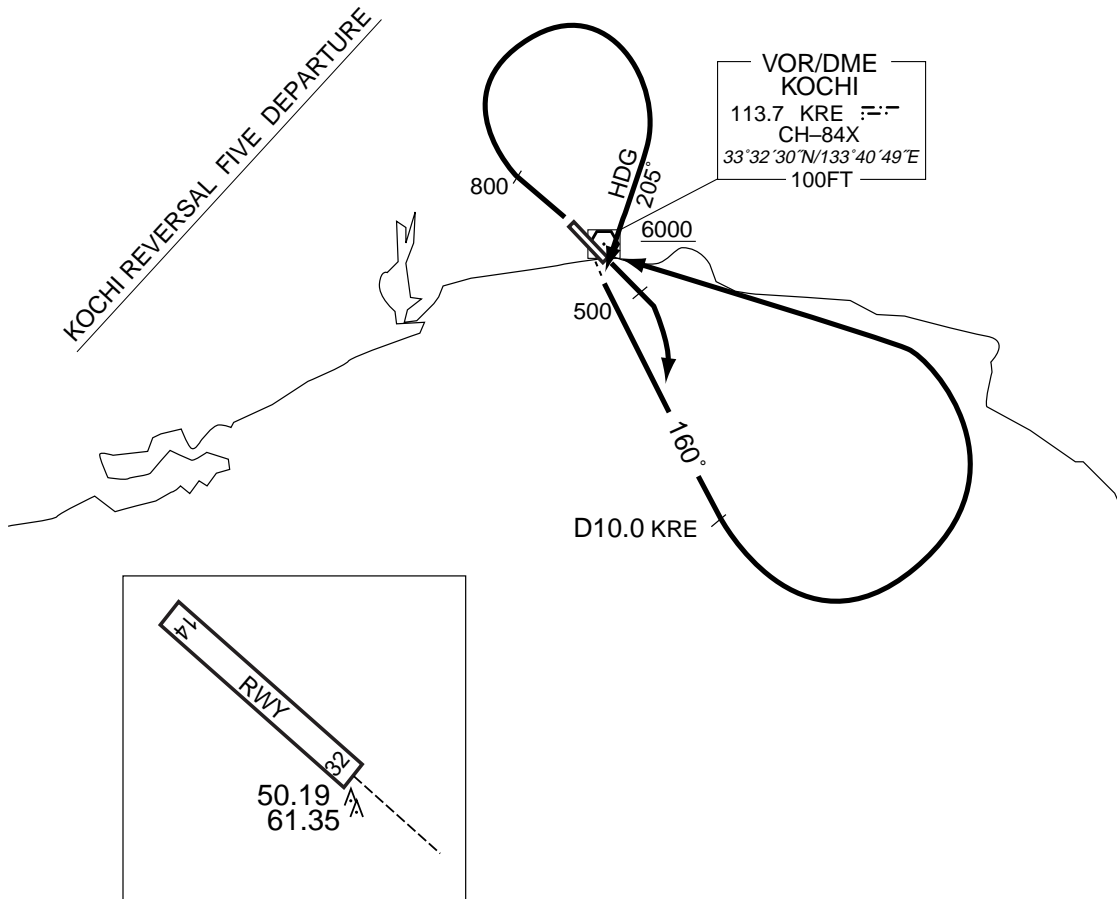
RWY 32 : Climb RWY HDG to 800FT, trun right HDG 205°....

....to intercept and proceed via KRE R160 to KRE 10.0DME, then turn left  
proceed to KRE VOR/DME.

Cross KRE VOR/DME at or above 6000FT.

Note RWY32 : 6.0% climb gradient required up to 2500FT.

OBST ALT 2165FT located at 6.6NM 358° FM end of RWY32.



STANDARD DEPARTURE CHART - INSTRUMENT

RJOK / KOCHI

➔ SID

URADO REVERSAL THREE DEPARTURE

RWY 14 : Climb RWY HDG to 500FT, turn right HDG 255°....

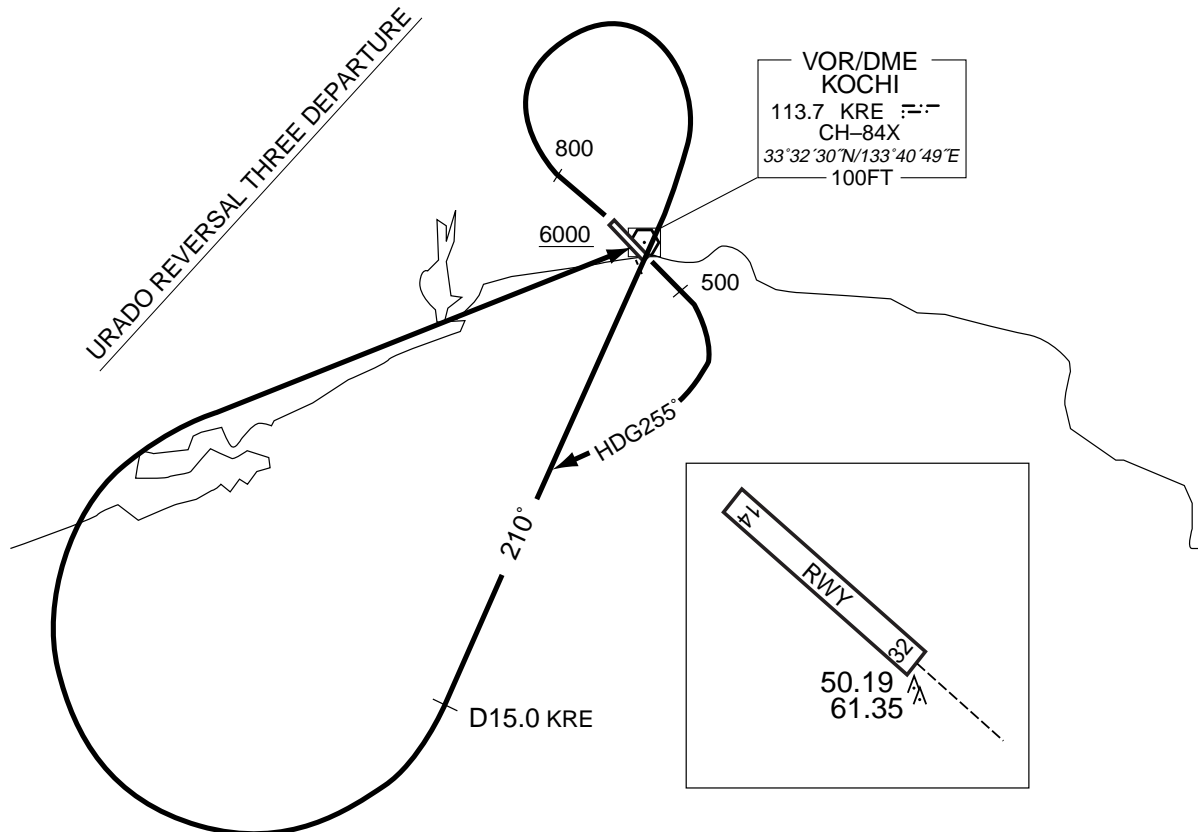
RWY 32 : Climb RWY HDG to 800FT, trun right....

....to intercept and proceed via KRE R210 to KRE 15.0DME, then turn right  
proceed to KRE VOR/DME.

Cross KRE VOR/DME at or above 6000FT.

Note RWY32 : 6.0% climb gradient required up to 2500FT.

OBST ALT 2165FT located at 6.6NM 358° FM end of RWY32.



STANDARD DEPARTURE CHART -INSTRUMENT

RJOK / KOCHI

RNAV SID

KARIN ONE RNAV DEPARTURE

RNAV 1

Note 1 ) DME/DME/IRU or GNSS required.

※The aircraft equipped with only DME/DME/IRU must be able to update its position without delay at the starting point of take-off roll.

2 ) RADAR service required.

Critical DME

RWY14 : KRE 3.0NM fm DER - 7NM to KARIN  
SUC 3.0NM fm DER - 10NM to KARIN  
RWY32 : KRE 9NM to OK32C - 10NM to KARIN  
SUC 9NM to OK32C - 4NM to OK32C

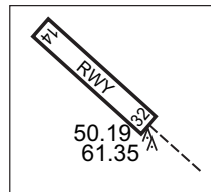
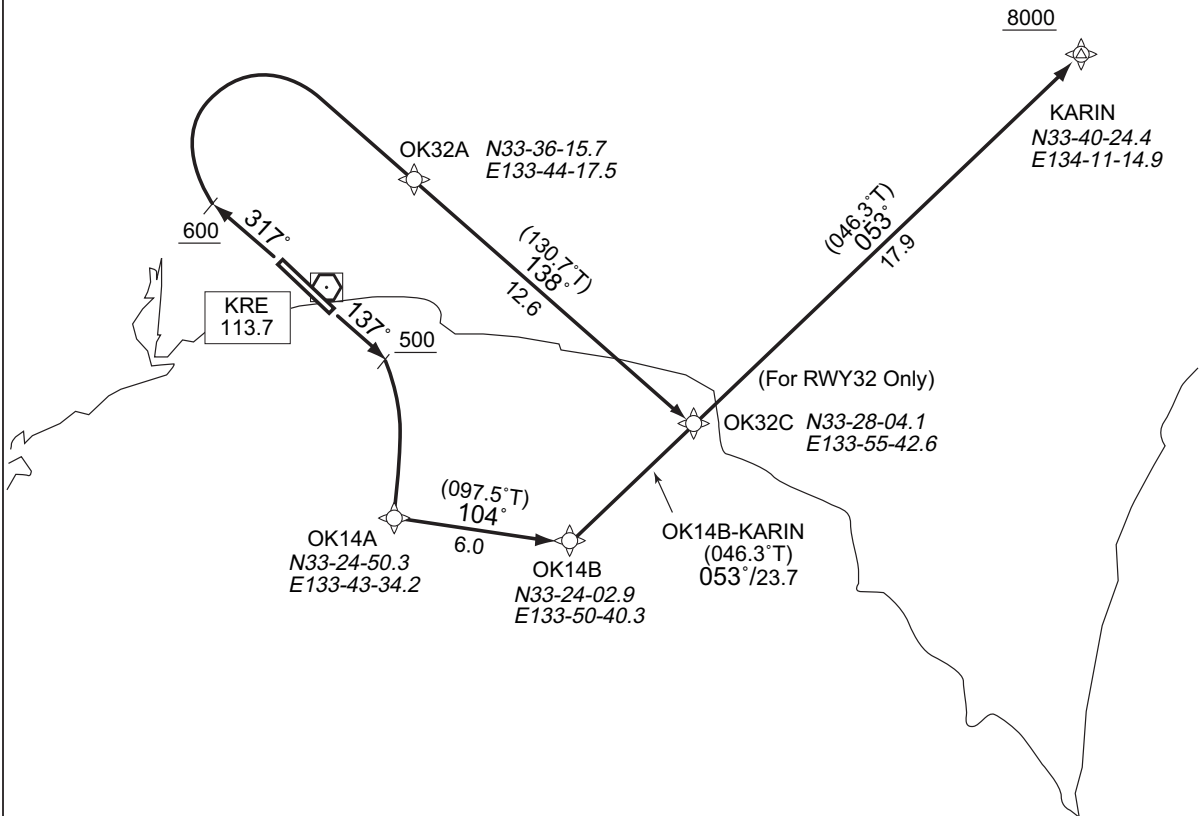
DME GAP

RWY14 : DER - 3.0NM fm DER  
RWY32 : DER - 9NM fm OK32C

Inappropriate Nav aids

See AD1.1.6.10.3. Inappropriate NAVAIDS for RNAV1

VAR 7° W(2009)



DESIGNATION	COORDINATES
OK14A	33 24 50.3N 133 43 34.2E
OK14B	33 24 02.9N 133 50 40.3E
OK32A	33 36 15.7N 133 44 17.5E
OK32C	33 28 04.1N 133 55 42.6E
KARIN	33 40 24.4N 134 11 14.9E

Note RWY32: 6.0% climb gradient required up to 2300FT.

RWY14 : Climb on HDG137° at or above 500FT, turn right direct to OK14A, to OK14B, to KARIN at or above 8000FT.

RWY32 : Climb on HDG317° at or above 600FT, turn right direct to OK32A, to OK32C, to KARIN at or above 8000FT.

Note RWY32: 6.0% climb gradient required up to 2300FT.  
OBST ALT 1970FT located at 6.13NM 004° FM end of RWY32.

## STANDARD DEPARTURE CHART -INSTRUMENT

RJOK / KOCHI

➔ RNAV SID

KARIN ONE RNAV DEPARTURE

## RWY14

Rcmd. Path Terminator	Fix ID (Waypoint Name)	Fly Over	Distance (NM)	MAG Track (TRUE Track)	Turn Direction	Altitude (FT)	Speed Limit (KIAS)	Vertical Angle	Navigation Performance
VA	—	—	—	137° (130.6°)	—	+500	—	—	RNAV1
DF	OK14A	—	—	—	R	—	—	—	RNAV1
TF	OK14B	—	6.0	104° (097.5°)	—	—	—	—	RNAV1
TF	KARIN	—	23.7	053° (046.3°)	—	+8000	—	—	RNAV1

## RWY32

Rcmd. Path Terminator	Fix ID (Waypoint Name)	Fly Over	Distance (NM)	MAG Track (TRUE Track)	Turn Direction	Altitude (FT)	Speed Limit (KIAS)	Vertical Angle	Navigation Performance
VA	—	—	—	317° (310.6°)	—	+600	—	—	RNAV1
DF	OK32A	—	—	—	R	—	—	—	RNAV1
TF	OK32C	—	12.6	138° (130.7°)	—	—	—	—	RNAV1
TF	KARIN	—	17.9	053° (046.3°)	—	+8000	—	—	RNAV1

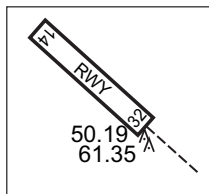
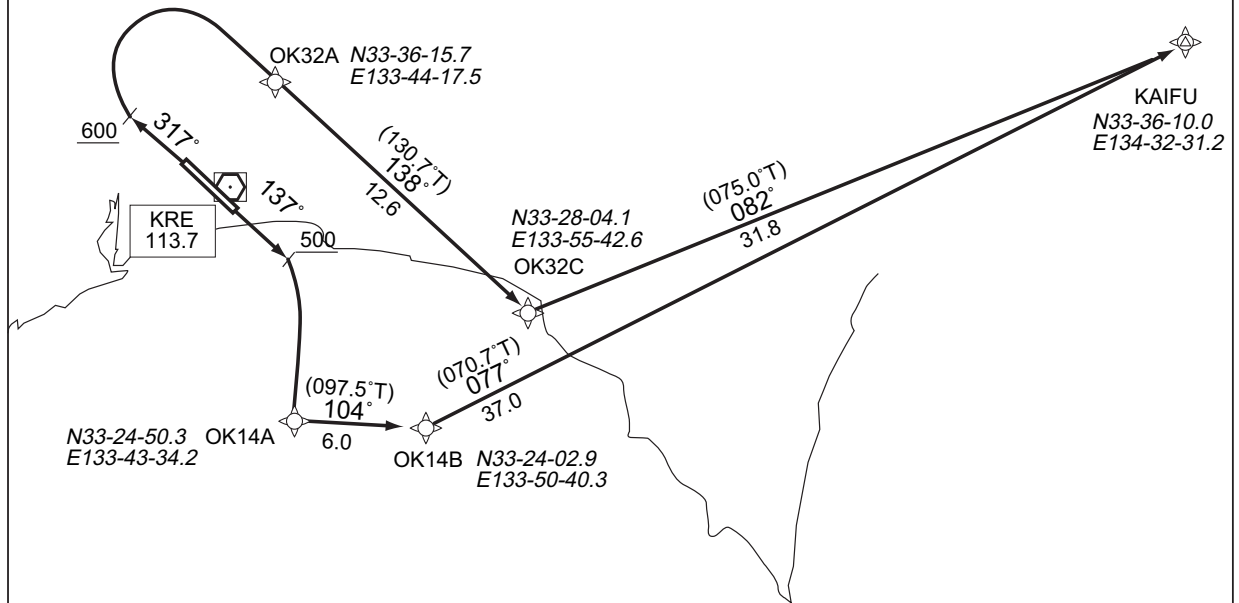
STANDARD DEPARTURE CHART -INSTRUMENT

RJOK / KOCHI

➔ RNAV SID

KAIFU ONE RNAV DEPARTURE		RNAV 1
Note 1 ) DME/DME/IRU or GNSS required. ※The aircraft equipped with only DME/DME/IRU must be able to update its position without delay at the starting point of take-off roll. 2 ) RADAR service required.	Critical DME	RWY14 : KRE 3.0NM fm DER - 23NM to KAIFU SUC 3.0NM fm DER - 32NM to KAIFU RWY32 : KRE 9NM to OK32C - 28NM to KAIFU SUC 9NM to OK32C - 4NM to OK32C
	DME GAP	RWY14 : DER - 3.0NM fm DER RWY32 : DER - 9NM to OK32C
	Inappropriate Navaids	See AD1.1.6.10.3. Inappropriate NAVAIDs for RNAV1

VAR 7° W(2009)



DESIGNATION	COORDINATES
OK14A	33 24 50.3N 133 43 34.2E
OK14B	33 24 02.9N 133 50 40.3E
OK32A	33 36 15.7N 133 44 17.5E
OK32C	33 28 04.1N 133 55 42.6E
KAIFU	33 36 10.0N 134 32 31.2E

Note RWY32: 6.0% climb gradient required up to 2300FT.

RWY14 : Climb on HDG137° at or above 500FT, turn right direct to OK14A, to OK14B, to KAIFU.

RWY32 : Climb on HDG317° at or above 600FT, turn right direct to OK32A, to OK32C, to KAIFU.

Note RWY32: 6.0% climb gradient required up to 2300FT.  
 OBST ALT 1970FT located at 6.13NM 004° FM end of RWY32.



## STANDARD DEPARTURE CHART -INSTRUMENT

RJOK / KOCHI

➔ RNAV SID

## KAIFU ONE RNAV DEPARTURE

## RWY14

Rcmd. Path Terminator	Fix ID (Waypoint Name)	Fly Over	Distance (NM)	MAG Track (TRUE Track)	Turn Direction	Altitude (FT)	Speed Limit (KIAS)	Vertical Angle	Navigation Performance
VA	—	—	—	137° (130.6°)	—	+500	—	—	RNAV1
DF	OK14A	—	—	—	R	—	—	—	RNAV1
TF	OK14B	—	6.0	104° (097.5°)	—	—	—	—	RNAV1
TF	KAIFU	—	37.0	077° (070.7°)	—	—	—	—	RNAV1

## RWY32

Rcmd. Path Terminator	Fix ID (Waypoint Name)	Fly Over	Distance (NM)	MAG Track (TRUE Track)	Turn Direction	Altitude (FT)	Speed Limit (KIAS)	Vertical Angle	Navigation Performance
VA	—	—	—	317° (310.6°)	—	+600	—	—	RNAV1
DF	OK32A	—	—	—	R	—	—	—	RNAV1
TF	OK32C	—	12.6	138° (130.7°)	—	—	—	—	RNAV1
TF	KAIFU	—	31.8	082° (075.0°)	—	—	—	—	RNAV1

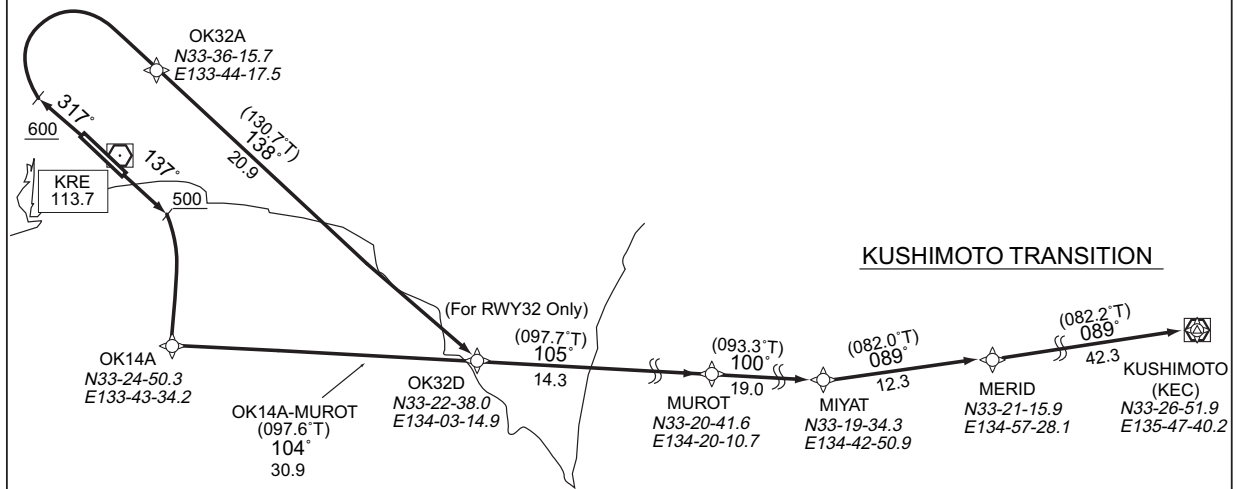
STANDARD DEPARTURE CHART -INSTRUMENT

RJOK / KOCHI

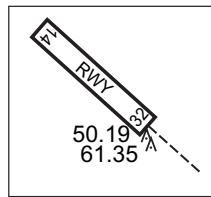
➔ RNAV SID and TRANSITION

MUROT ONE RNAV DEPARTURE		RNAV 1
Note 1) DME/DME/IRU or GNSS required. ※The aircraft equipped with only DME/DME/IRU must be able to update its position without delay at the starting point of take-off roll. 2) RADAR service required.	Critical DME	RWY14 : KRE 3.0NM fm DER - 10NM to MUROT SUC 3.0NM fm DER - 22NM to MUROT RWY32 : KRE 18NM to OK32D - OK32D SUC 18NM to OK32D - 11NM to OK32D
	DME GAP	RWY14 : DER - 3.0NM fm DER RWY32 : DER - 18NM to OK32D
	Inappropriate Nav aids	See AD1.1.6.10.3. Inappropriate NAVAIDS for RNAV1

VAR 7° W(2009)



MUROT ONE RNAV DEPARTURE



DESIGNATION	COORDINATES
OK14A	33 24 50.3N 133 43 34.2E
OK32A	33 36 15.7N 133 44 17.5E
OK32D	33 22 38.0N 134 03 14.9E
MUROT	33 20 41.6N 134 20 10.7E
MIYAT	33 19 34.3N 134 42 50.9E
MERID	33 21 15.9N 134 57 28.1E
KUSHIMOTO(KEC)	33 26 51.9N 135 47 40.2E

Note RWY32: 6.0% climb gradient required up to 2300FT.

MUROT ONE RNAV DEPARTURE

RWY14 : Climb on HDG137° at or above 500FT, turn right direct to OK14A, to MUROT.  
 RWY32 : Climb on HDG317° at or above 600FT, turn right direct to OK32A, to OK32D, to MUROT.

KUSHIMOTO TRANSITION

From MUROT to MIYAT, to MERID, to KUSHIMOTO(KEC).

Note RWY32: 6.0% climb gradient required up to 2300FT.  
 OBST ALT 1970FT located at 6.13NM 004° FM end of RWY32.

## STANDARD DEPARTURE CHART -INSTRUMENT

RJOK / KOCHI

➔ RNAV SID and TRANSITION

MUROT ONE RNAV DEPARTURE

## RWY14

Rcmd. Path Terminator	Fix ID (Waypoint Name)	Fly Over	Distance (NM)	MAG Track (TRUE Track)	Turn Direction	Altitude (FT)	Speed Limit (KIAS)	Vertical Angle	Navigation Performance
VA	—	—	—	137° (130.6°)	—	+500	—	—	RNAV1
DF	OK14A	—	—	—	R	—	—	—	RNAV1
TF	MUROT	—	30.9	104° (097.6°)	—	—	—	—	RNAV1

## RWY32

Rcmd. Path Terminator	Fix ID (Waypoint Name)	Fly Over	Distance (NM)	MAG Track (TRUE Track)	Turn Direction	Altitude (FT)	Speed Limit (KIAS)	Vertical Angle	Navigation Performance
VA	—	—	—	317° (310.6°)	—	+600	—	—	RNAV1
DF	OK32A	—	—	—	R	—	—	—	RNAV1
TF	OK32D	—	20.9	138° (130.7°)	—	—	—	—	RNAV1
TF	MUROT	—	14.3	105° (097.7°)	—	—	—	—	RNAV1

KUSHIMOTO TRANSITION

Rcmd. Path Terminator	Fix ID (Waypoint Name)	Fly Over	Distance (NM)	MAG Track (TRUE Track)	Turn Direction	Altitude (FT)	Speed Limit (KIAS)	Vertical Angle	Navigation Performance
IF	MUROT	—	—	—	—	—	—	—	RNAV1
TF	MIYAT	—	19.0	100° (093.3°)	—	—	—	—	RNAV1
TF	MERID	—	12.3	089° (082.0°)	—	—	—	—	RNAV1
TF	KUSHIMOTO (KEC)	—	42.3	089° (082.2°)	—	—	—	—	RNAV1

STANDARD DEPARTURE CHART -INSTRUMENT

RJOK / KOCHI

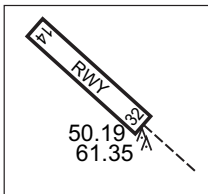
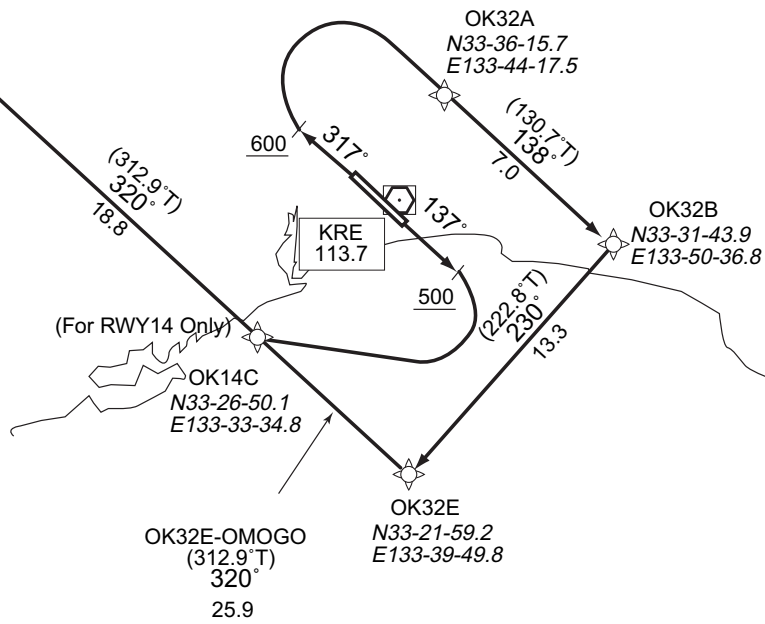
➔ RNAV SID

OMOGO ONE RNAV DEPARTURE		RNAV 1
Note 1 ) DME/DME/IRU or GNSS required. ※The aircraft equipped with only DME/DME/IRU must be able to update its position without delay at the starting point of take-off roll. 2 ) RADAR service required.	Critical DME	RWY14 : KRE 16NM to OMOGO - 7NM to OMOGO SUC 16NM to OMOGO - 7NM to OMOGO RWY32 : KRE 4NM to OK32B - 25NM to OMOGO SUC 4NM to OK32B - 25NM to OMOGO
	DME GAP	RWY14 : DER - 16NM to OMOGO RWY32 : DER - 4NM to OK32B 25NM to OMOGO - 18NM to OMOGO
	Inappropriate Nav aids	See AD1.1.6.10.3. Inappropriate NAVAIDs for RNAV1

VAR 7° W(2009)

9000

OMOGO  
N33-39-34.0  
E133-17-04.7



DESIGNATION	COORDINATES
OK14C	33 26 50.1N 133 33 34.8E
OK32A	33 36 15.7N 133 44 17.5E
OK32B	33 31 43.9N 133 50 36.8E
OK32E	33 21 59.2N 133 39 49.8E
OMOGO	33 39 34.0N 133 17 04.7E

Note RWY32: 6.0% climb gradient required up to 2300FT.

RWY14 : Climb on HDG137° at or above 500FT, turn right direct to OK14C, to OMOGO at or above 9000FT.

RWY32 : Climb on HDG317° at or above 600FT, turn right direct to OK32A, to OK32B, to OK32E, to OMOGO at or above 9000FT.

Note RWY32: 6.0% climb gradient required up to 2300FT.  
OBST ALT 1970FT located at 6.13NM 004° FM end of RWY32.

## STANDARD DEPARTURE CHART -INSTRUMENT

RJOK / KOCHI

➔ RNAV SID

OMOGO ONE RNAV DEPARTURE

## RWY14

Rcmd. Path Terminator	Fix ID (Waypoint Name)	Fly Over	Distance (NM)	MAG Track (TRUE Track)	Turn Direction	Altitude (FT)	Speed Limit (KIAS)	Vertical Angle	Navigation Performance
VA	—	—	—	137° (130.6°)	—	+500	—	—	RNAV1
DF	OK14C	—	—	—	R	—	—	—	RNAV1
TF	OMOGO	—	18.8	320° (312.9°)	—	+9000	—	—	RNAV1

## RWY32

Rcmd. Path Terminator	Fix ID (Waypoint Name)	Fly Over	Distance (NM)	MAG Track (TRUE Track)	Turn Direction	Altitude (FT)	Speed Limit (KIAS)	Vertical Angle	Navigation Performance
VA	—	—	—	317° (310.6°)	—	+600	—	—	RNAV1
DF	OK32A	—	—	—	R	—	—	—	RNAV1
TF	OK32B	—	7.0	138° (130.7°)	—	—	—	—	RNAV1
TF	OK32E	—	13.3	230° (222.8°)	—	—	—	—	RNAV1
TF	OMOGO	—	25.9	320° (312.9°)	—	+9000	—	—	RNAV1

STANDARD ARRIVAL CHART -INSTRUMENT

RJOK / KOCHI

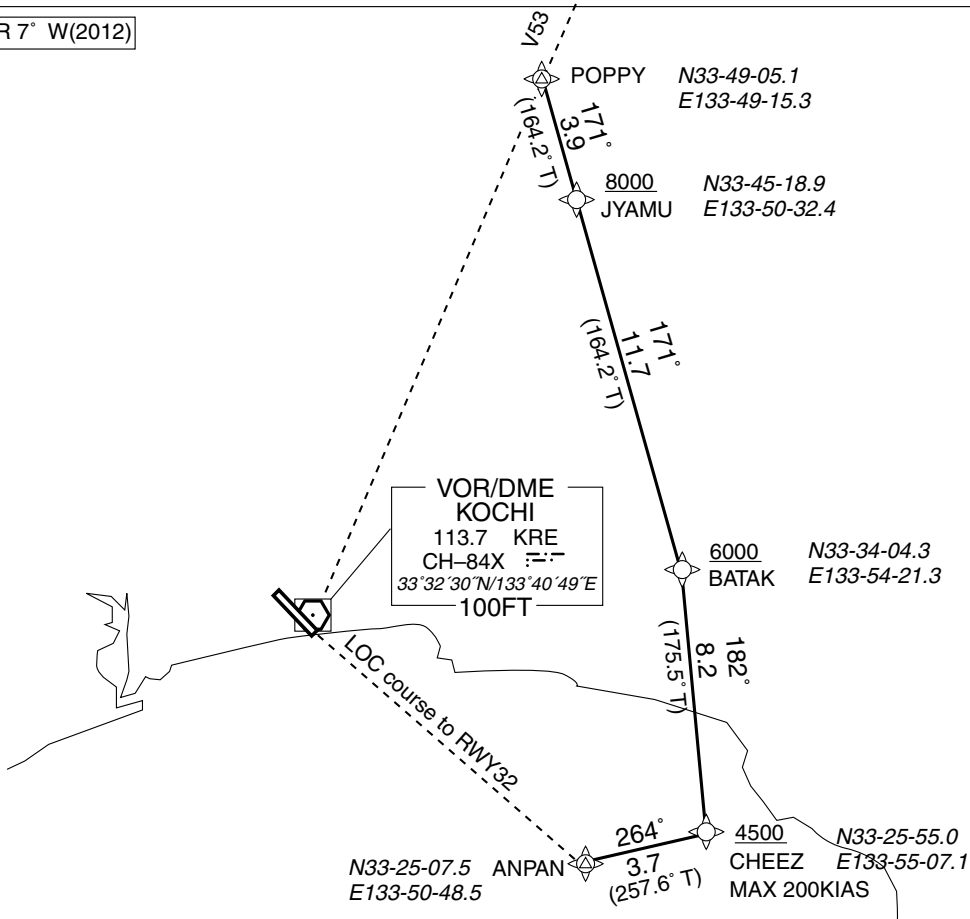
RNAV STAR RWY32

YOSAKOI NORTH RNAV ARRIVAL

RNAV 1

Note 1 ) DME/DME/IRU or GNSS required.  
2 ) RADAR service required.

VAR 7° W(2012)



From POPPY, to JYAMU at or above 8000FT, to BATAK at or above 6000FT, to CHEEZ at or above 4500FT, to ANPAN.

FIX	DESIGNATION	COORDINATES
	POPPY	334905.1N 1334915.3E
JYAMU	334518.9N 1335032.4E	
BATAK	333404.3N 1335421.3E	
CHEEZ	332555.0N 1335507.1E	
ANPAN	332507.5N 1335048.5E	
Critical DME	GBE	POPPY - 2NM to BATAK
SUC	7NM to BATAK - ANPAN	
KRE	1NM to BATAK - ANPAN	
DME GAP	-	
Inappropriate Nav aids	See General Rule 3. Inappropriate NAV AIDs for RNAV1	

Rcmd. Path Terminator	Fix ID (Waypoint Name)	Fly Over	Distance (NM)	MAG Track (TRUE Track)	Turn Direction	Altitude (FT)	Speed Limit (KIAS)	Vertical Angle	Navigation Performance
IF	POPPY	—	—	—	—	—	—	—	RNAV1
TF	JYAMU	—	3.9	171° (164.2°)	—	+8000	—	—	RNAV1
TF	BATAK	—	11.7	171° (164.2°)	—	+6000	—	—	RNAV1
TF	CHEEZ	—	8.2	182° (175.5°)	—	+4500	-200	—	RNAV1
TF	ANPAN	—	3.7	264° (257.6°)	—	—	—	—	RNAV1

STANDARD ARRIVAL CHART -INSTRUMENT

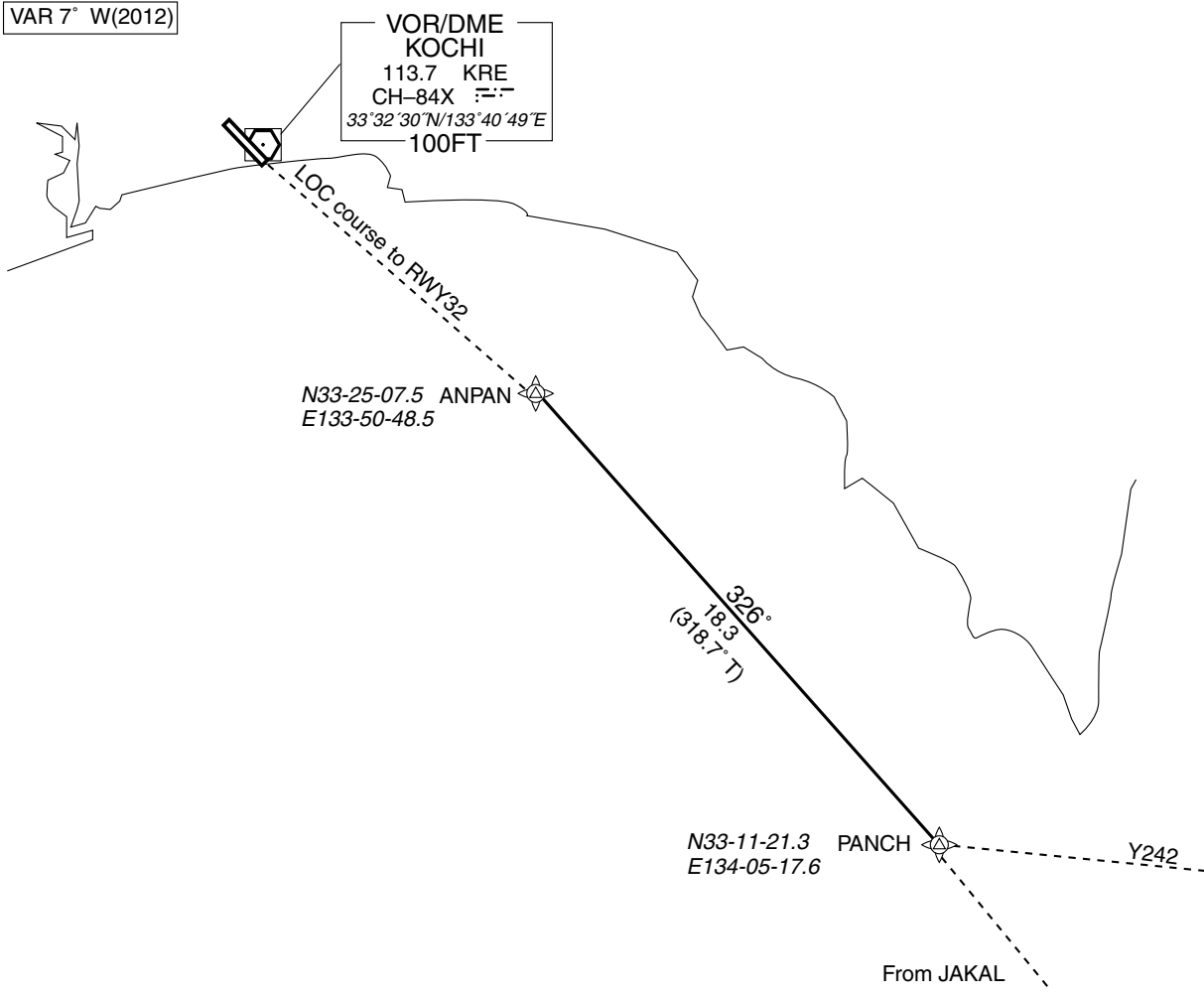
RJOK / KOCHI

RNAV STAR RWY32

YOSAKOI EAST RNAV ARRIVAL

RNAV 1

Note 1 ) DME/DME/IRU or GNSS required.  
2 ) RADAR service required.



From PANCH, to ANPAN.

FIX	DESIGNATION	COORDINATES
	PANCH	331121.3N 1340517.6E
	ANPAN	332507.5N 1335048.5E
Critical DME	KRE	PANCH - ANPAN
	SUC	8NM to ANPAN - ANPAN
DME GAP	-	
Inappropriate Navaids	See General Rule 3. Inappropriate NAVAIDs for RNAV1	

Rcmd. Path Terminator	Fix ID (Waypoint Name)	Fly Over	Distance (NM)	MAG Track (TRUE Track)	Turn Direction	Altitude (FT)	Speed Limit (KIAS)	Vertical Angle	Navigation Performance
IF	PANCH	—	—	—	—	—	—	—	RNAV1
TF	ANPAN	—	18.3	326° (318.7°)	—	—	—	—	RNAV1

STANDARD ARRIVAL CHART -INSTRUMENT

RJOK / KOCHI

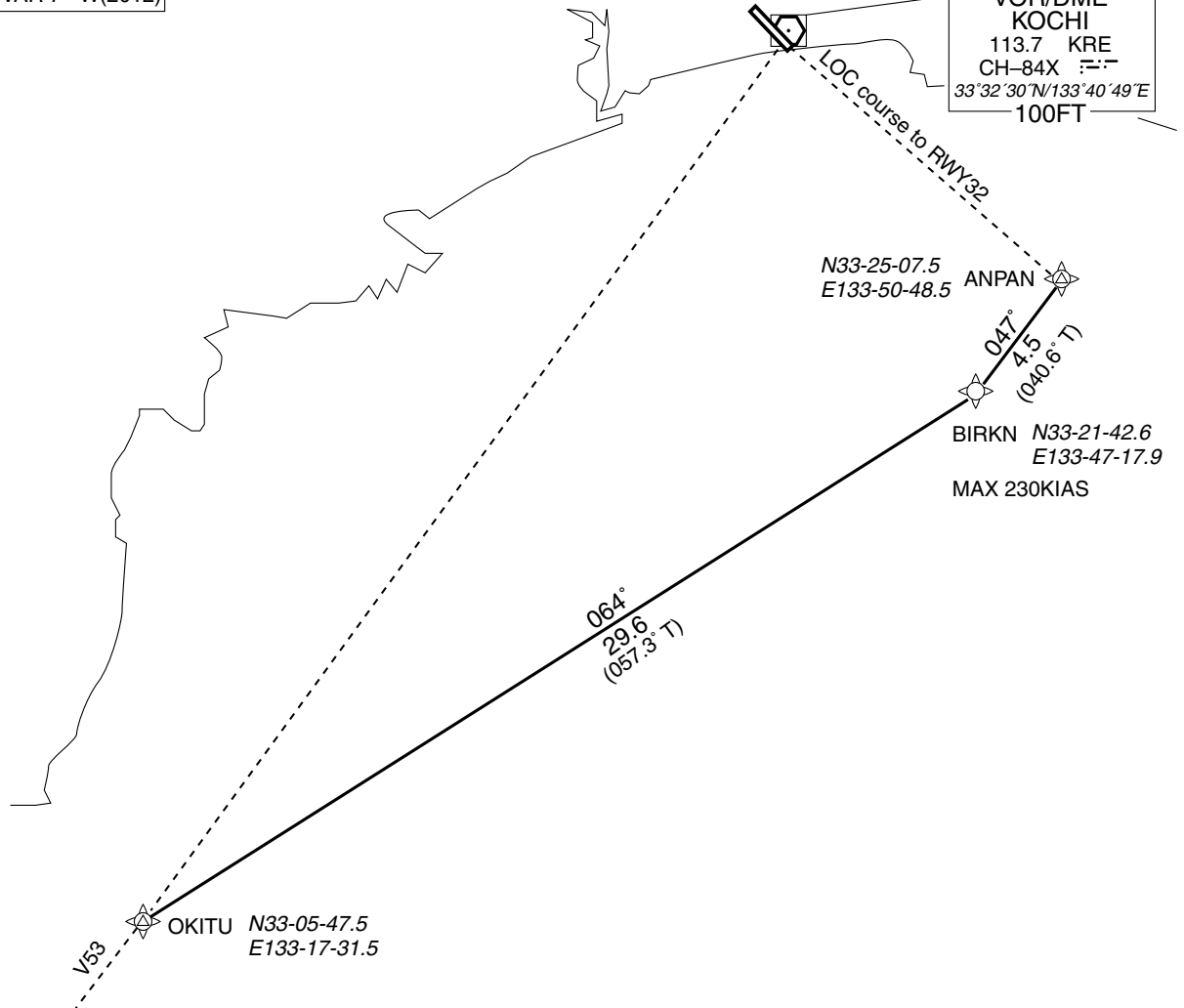
RNAV STAR RWY32

YOSAKOI SOUTH RNAV ARRIVAL

RNAV 1

Note 1 ) DME/DME/IRU or GNSS required.  
2 ) RADAR service required.

VAR 7° W(2012)



From OKITU, to BIRKN, to ANPAN.

FIX	DESIGNATION	COORDINATES
	OKITU	330547.5N 1331731.5E
BIRKN	332142.6N 1334717.9E	
ANPAN	332507.5N 1335048.5E	
Critical DME	IWC	OKITU - 26NM to BIRKN
	SUC	12NM to BIRKN - ANPAN
	KRE	12NM to BIRKN - ANPAN
DME GAP	26NM to BIRKN - 12NM to BIRKN	
Inappropriate Nav aids	See General Rule 3. Inappropriate NAV AIDs for RNAV1	

Rcmd. Path Terminator	Fix ID (Waypoint Name)	Fly Over	Distance (NM)	MAG Track (TRUE Track)	Turn Direction	Altitude (FT)	Speed Limit (KIAS)	Vertical Angle	Navigation Performance
IF	OKITU	—	—	—	—	—	—	—	RNAV1
TF	BIRKN	—	29.6	064° (057.3°)	—	—	230	—	RNAV1
TF	ANPAN	—	4.5	047° (040.6°)	—	—	—	—	RNAV1



STANDARD ARRIVAL CHART -INSTRUMENT

RJOK / KOCHI

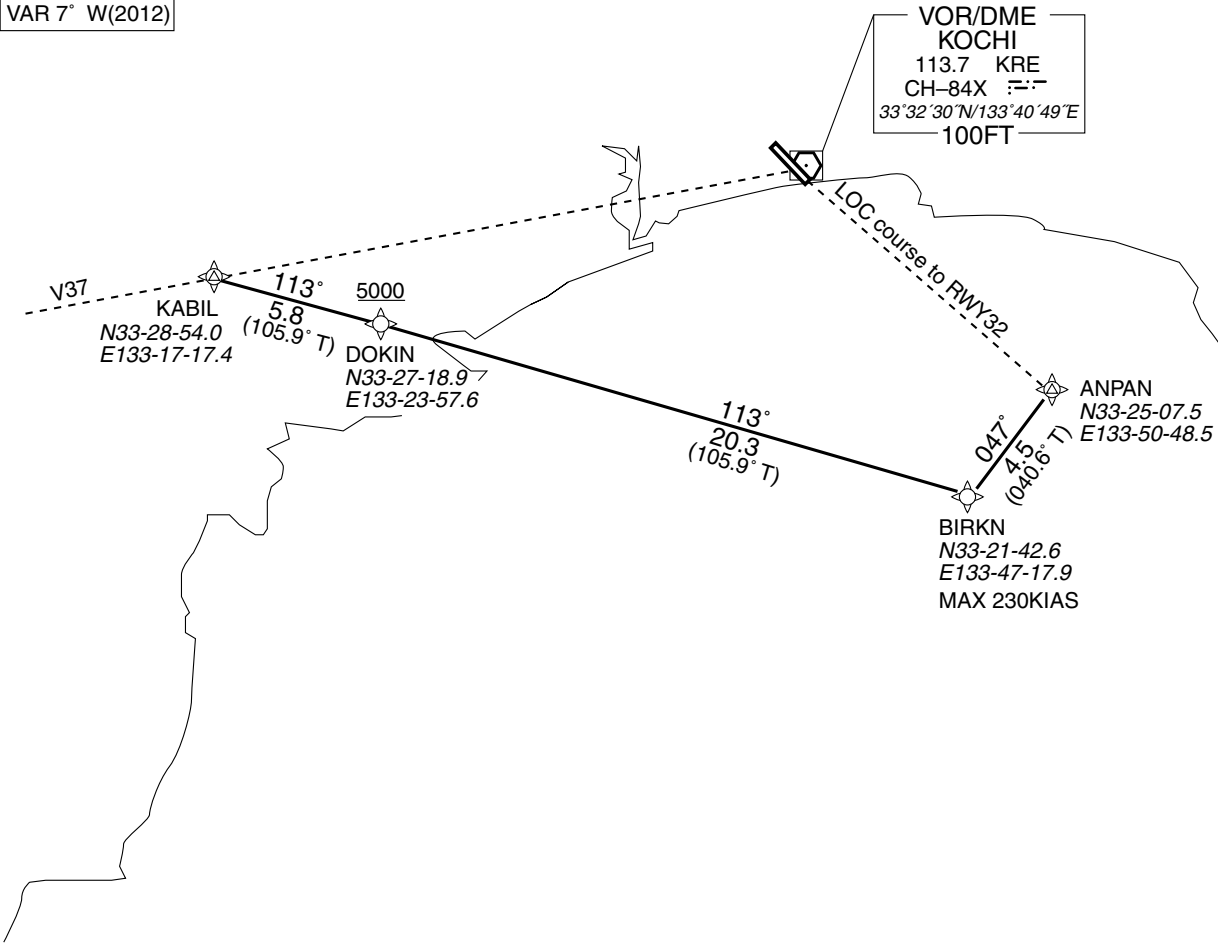
RNAV STAR RWY32

YOSAKOI WEST RNAV ARRIVAL

RNAV 1

Note 1 ) DME/DME/IRU or GNSS required.  
2 ) RADAR service required.

VAR 7° W(2012)



From KABIL, to DOKIN at or above 5000FT, to BIRKN, to ANPAN.

FIX	DESIGNATION	COORDINATES
	KABIL	332854.0N 1331717.4E
DOKIN	332718.9N 1332357.6E	
BIRKN	332142.6N 1334717.9E	
ANPAN	332507.5N 1335048.5E	
Critical DME	KRE	1NM to DOKIN - 16NM to BIRKN 7NM to BIRKN - ANPAN
	SUC	1NM to DOKIN - 16NM to BIRKN 7NM to BIRKN - ANPAN
DME GAP	16NM to BIRKN - 7NM to BIRKN	
Inappropriate Nav aids	See General Rule 3. Inappropriate NAVAIDs for RNAV1	

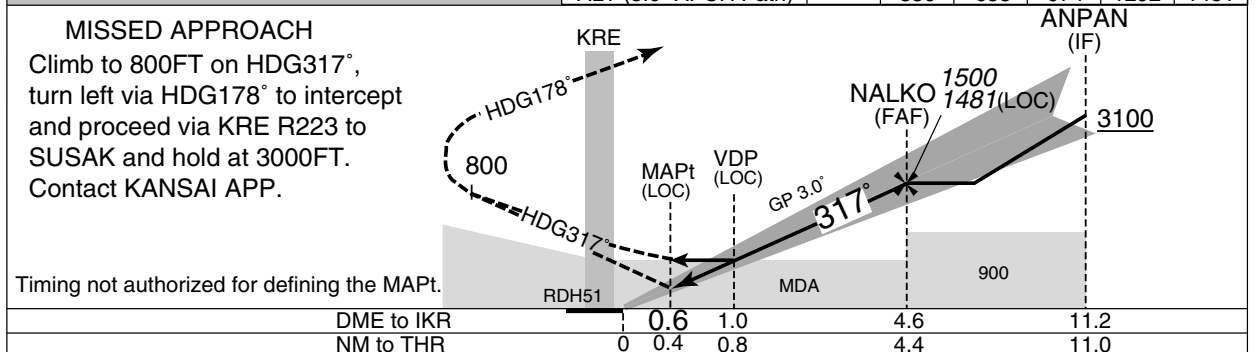
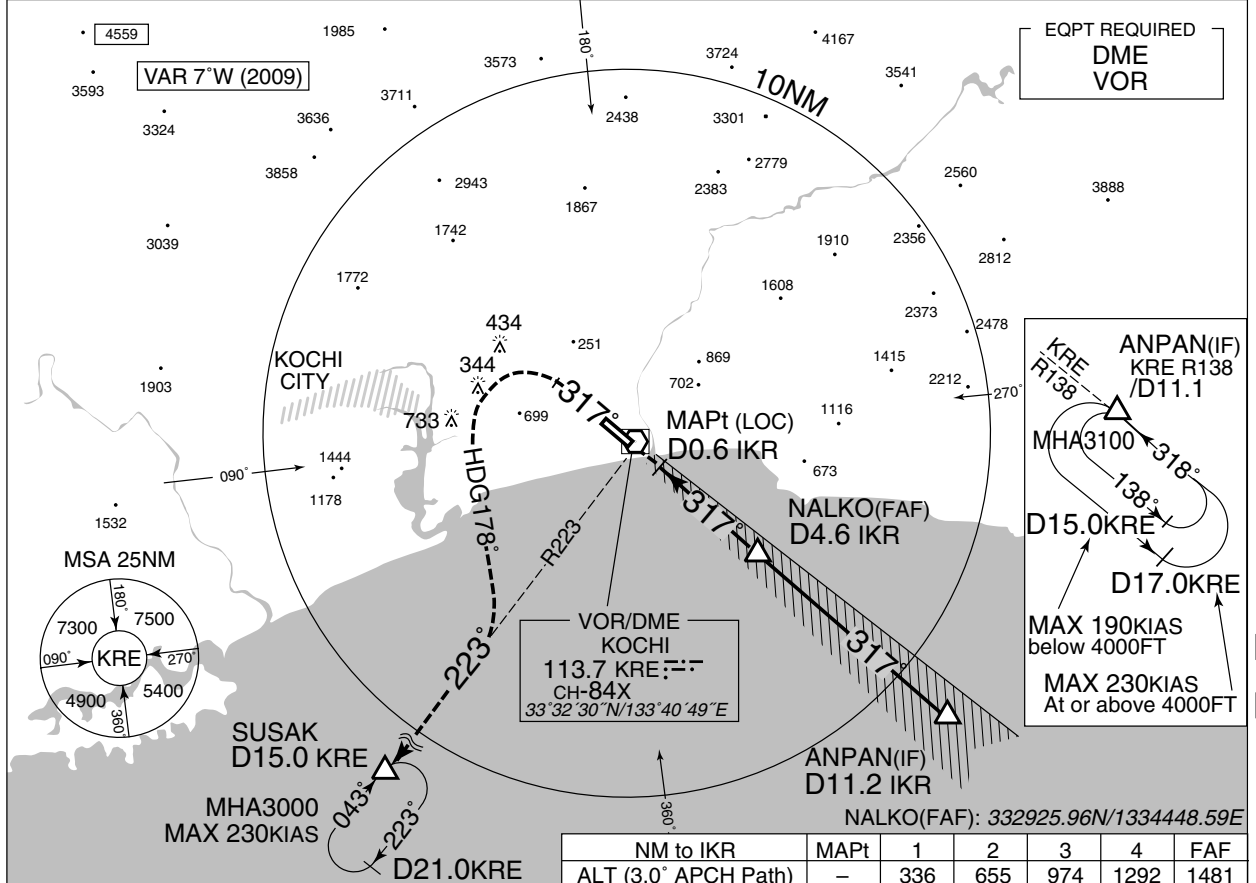
Rcmd. Path Terminator	Fix ID (Waypoint Name)	Fly Over	Distance (NM)	MAG Track (TRUE Track)	Turn Direction	Altitude (FT)	Speed Limit (KIAS)	Vertical Angle	Navigation Performance
IF	KABIL	—	—	—	—	—	—	—	RNAV1
TF	DOKIN	—	5.8	113° (105.9°)	—	+5000	—	—	RNAV1
TF	BIRKN	—	20.3	113° (105.9°)	—	—	230	—	RNAV1
TF	ANPAN	—	4.5	047° (040.6°)	—	—	—	—	RNAV1

INSTRUMENT APPROACH CHART

RJOK / KOCHI

ILS Z or LOC Z RWY32

KANSAI APP 125.0-261.2-124.8	ILS - LOC 110.9 IKR ILS-GP 330.8 ILS-DME CH-46X	KOCHI TOWER 118.75 - 126.2	RADAR AVBL ATIS 126.45
---------------------------------	--	-------------------------------	---------------------------



DME to ICR	0.6	1.0	4.6	11.2
NM to THR	0.4	0.8	4.4	11.0

Missed APCH climb gradient MNM 5.0%

MINIMA THR elev. 18 AD elev. 29

CAT	CAT I		LOC		CIRCLING	
	DA(H)	RVR/CMV	MDA(H)	RVR/CMV	MDA(H)	VIS
A	218 (200)	700	320 (302)	1200	690 (661)	1600
B				1300		
C				1400	760 (731)	2400
D				1600	830 (801)	3200

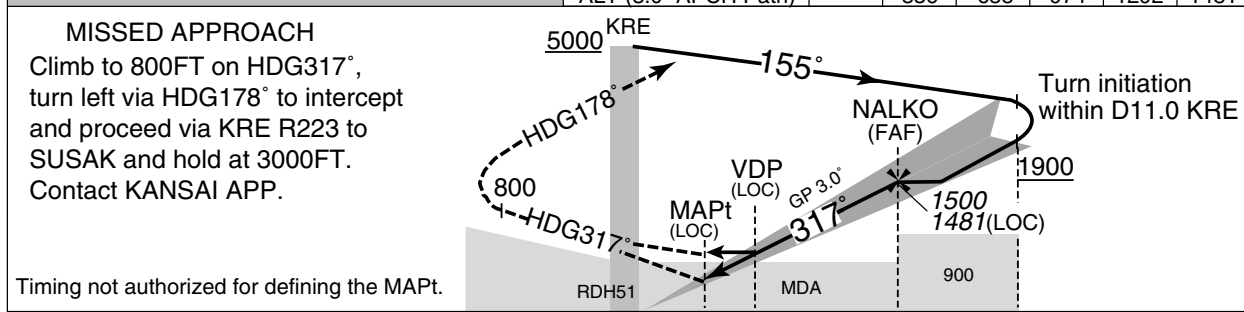
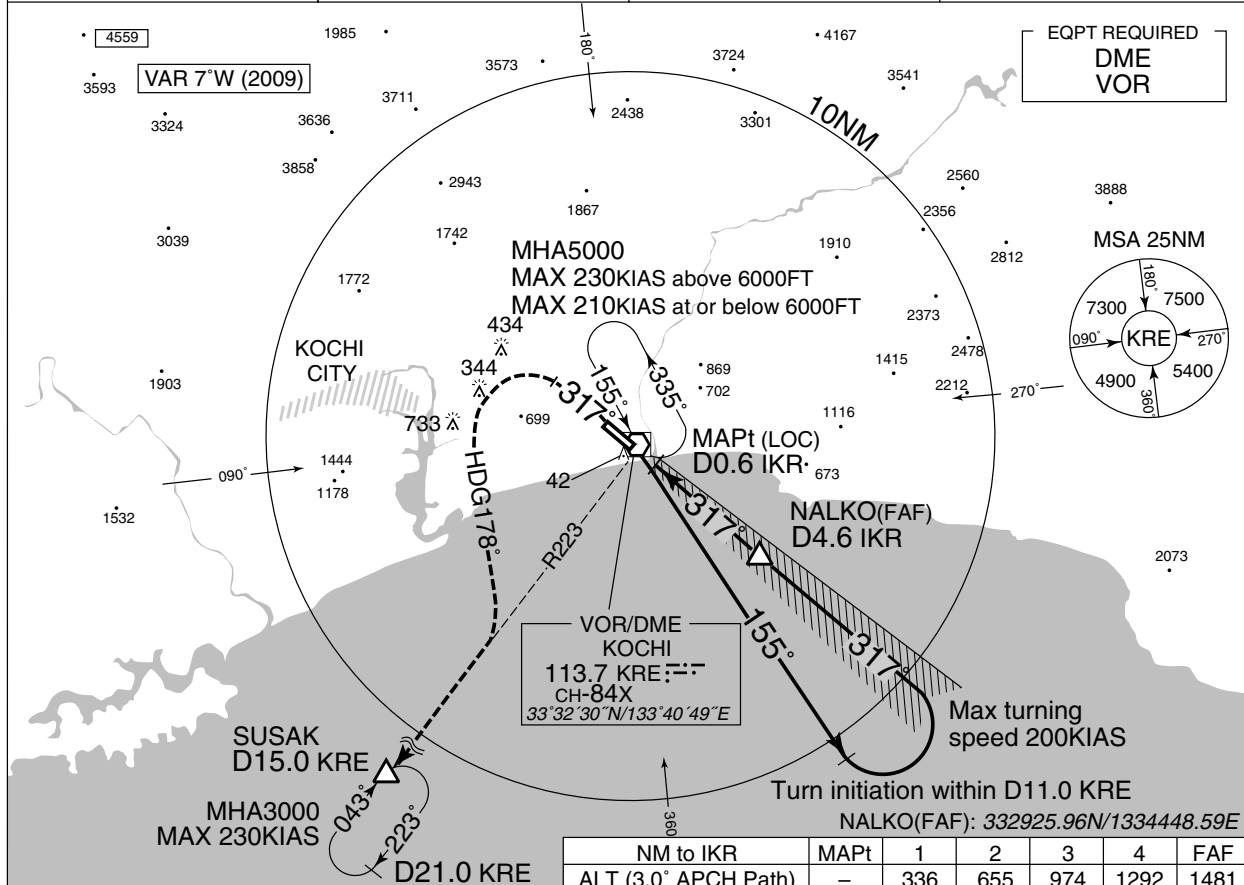
Circling to EAST side of RWY only.  
MINIMA with Missed APCH climb gradient of 2.5% are not established.

INSTRUMENT APPROACH CHART

RJOK / KOCHI

ILS Y or LOC Y RWY32

KANSAI APP 125.0 – 261.2 – 124.8	ILS - LOC 110.9 IKR ILS - GP 330.8 ILS - DME CH- 46X	KOCHI TOWER 118.75 – 126.2	RADAR AVBL ATIS 126.45
-------------------------------------	---	-------------------------------	---------------------------



DME to IKR	0	0.6	1.0	4.6
NM to THR	0	0.4	0.8	4.4

Missed APCH climb gradient MNM 5.0%  
MINIMA THR elev. 18 AD elev. 29

CAT	CAT I		LOC		CIRCLING	
	DA(H)	RVR/CMV	MDA(H)	RVR/CMV	MDA(H)	VIS
A	218 (200)	700	320 (302)	1200	690 (661)	1600
B				1300		
C				1400	760 (731)	2400
D				1600		

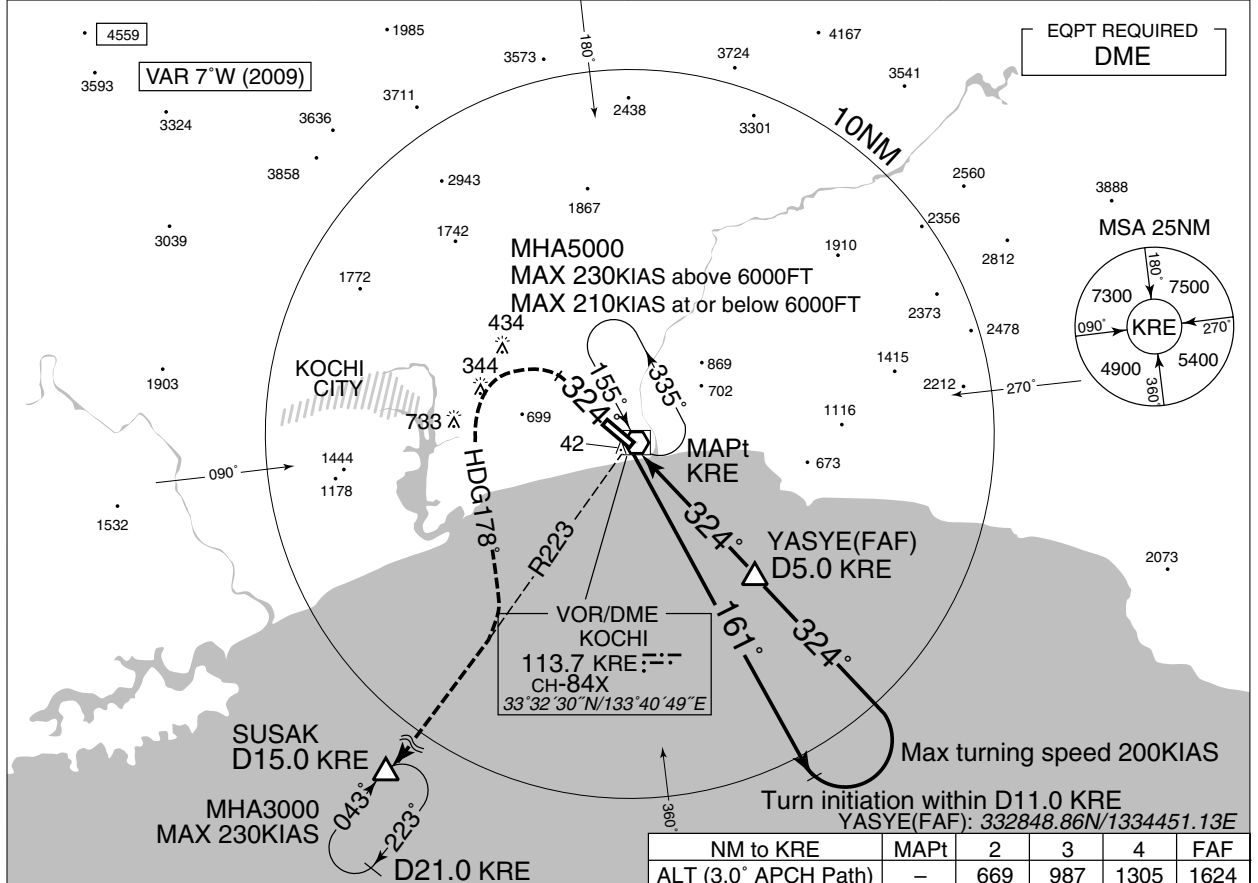
Circling to EAST side of RWY only.  
MINIMA with Missed APCH climb gradient of 2.5% are not established.

**INSTRUMENT APPROACH CHART**

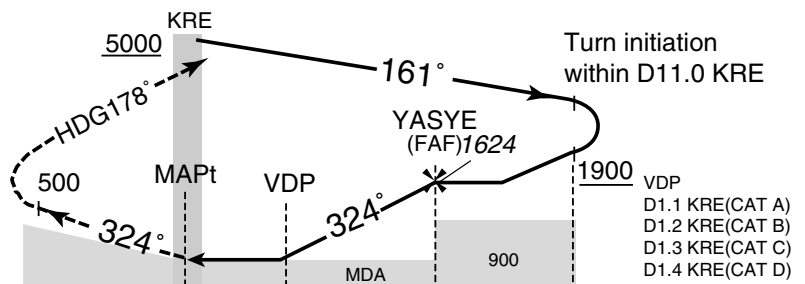
RJOK / KOCHI

VOR RWY32

KANSAI APP 125.0 – 261.2 – 124.8	KOCHI VOR/DME 113.7 KRE CH-84X 33°32'30"N/133°40'49"E	KOCHI TOWER 118.75 – 126.2	RADAR AVBL ATIS 126.45
-------------------------------------	--	-------------------------------	---------------------------



**MISSED APPROACH**  
Climb via KRE R324 to 500FT, turn left HDG178° to intercept and proceed via KRE R223 to SUSAK and hold at 3000FT. Contact KANSAI APP.



Timing not authorized for defining the MAPt.

DME to KRE	0	5.0
NM to THR	0	4.9

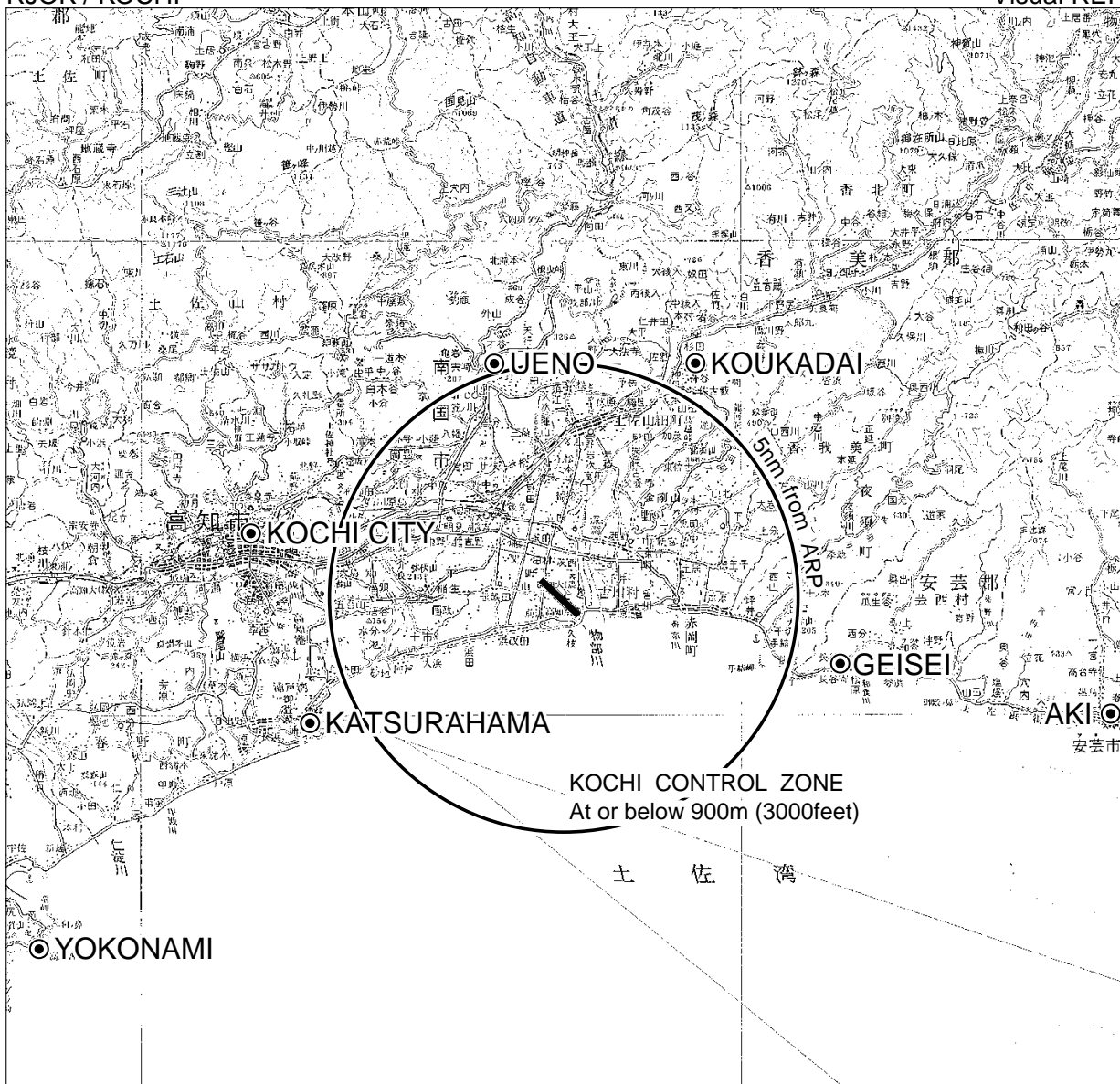
Missed APCH climb gradient MNM 4.5%

MINIMA		THR elev. 18	AD elev. 29	
CAT	MDA(H)		CIRCLING	
	RVR/CMV	MDA(H)	VIS	
A	360 (342)	1200	690 (661)	1600
B	400 (382)	1300		
C	430 (412)	1400	760 (731)	2400
D	450 (432)	1600	830 (801)	3200

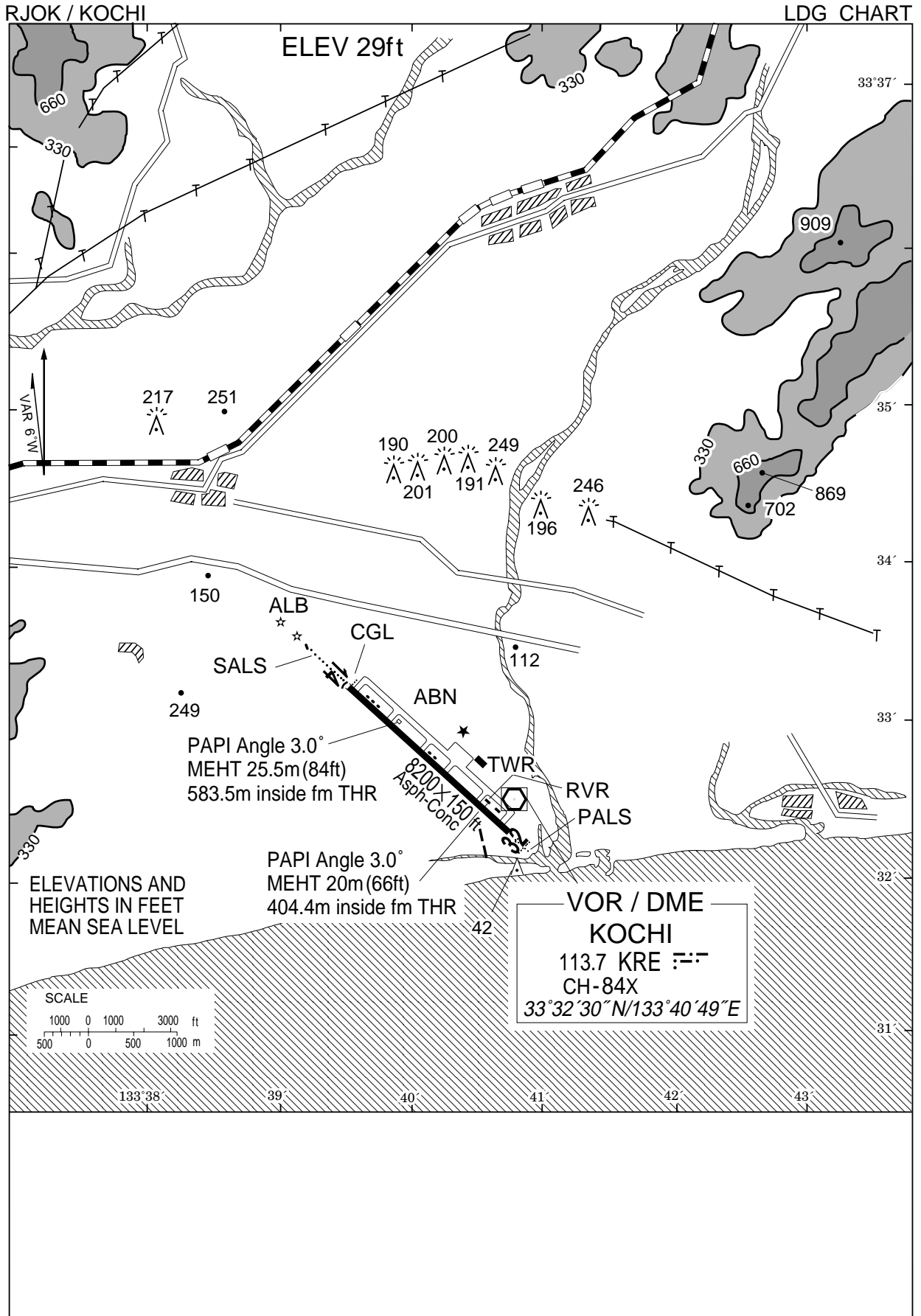
Circling to EAST side of RWY only.  
MINIMA with Missed APCH climb gradient of 2.5% are not established.

RJOK / KOCHI

Visual REP



Call sign	BRG / DIST from ARP	Remarks
工科大 Koukadai	035° / 5.2NM	高知工科大学 Kochi University of Technology
芸西 Geisei	113° / 5.9NM	観光ホテル Hotel
桂浜 Katsurahama	248° / 6.0NM	浦戸大橋 Bridge
高知市 Kochi city	290° / 6.5NM	JR高知駅 Station
植野 Ueno	355° / 5.0NM	ゴルフ場 Golf course
安芸 Aki	110° / 12.5NM	安芸川河口 River mouth
横浪 Yokonami	243° / 12.9NM	国民宿舎 Hotel



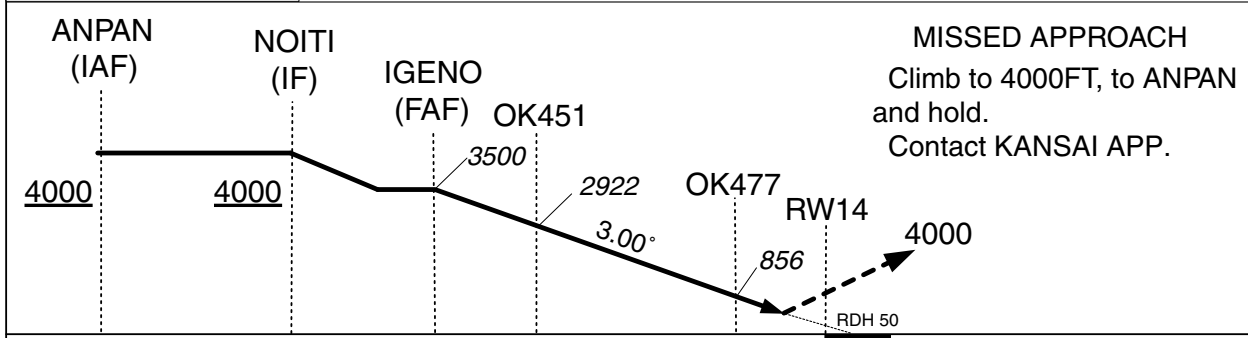
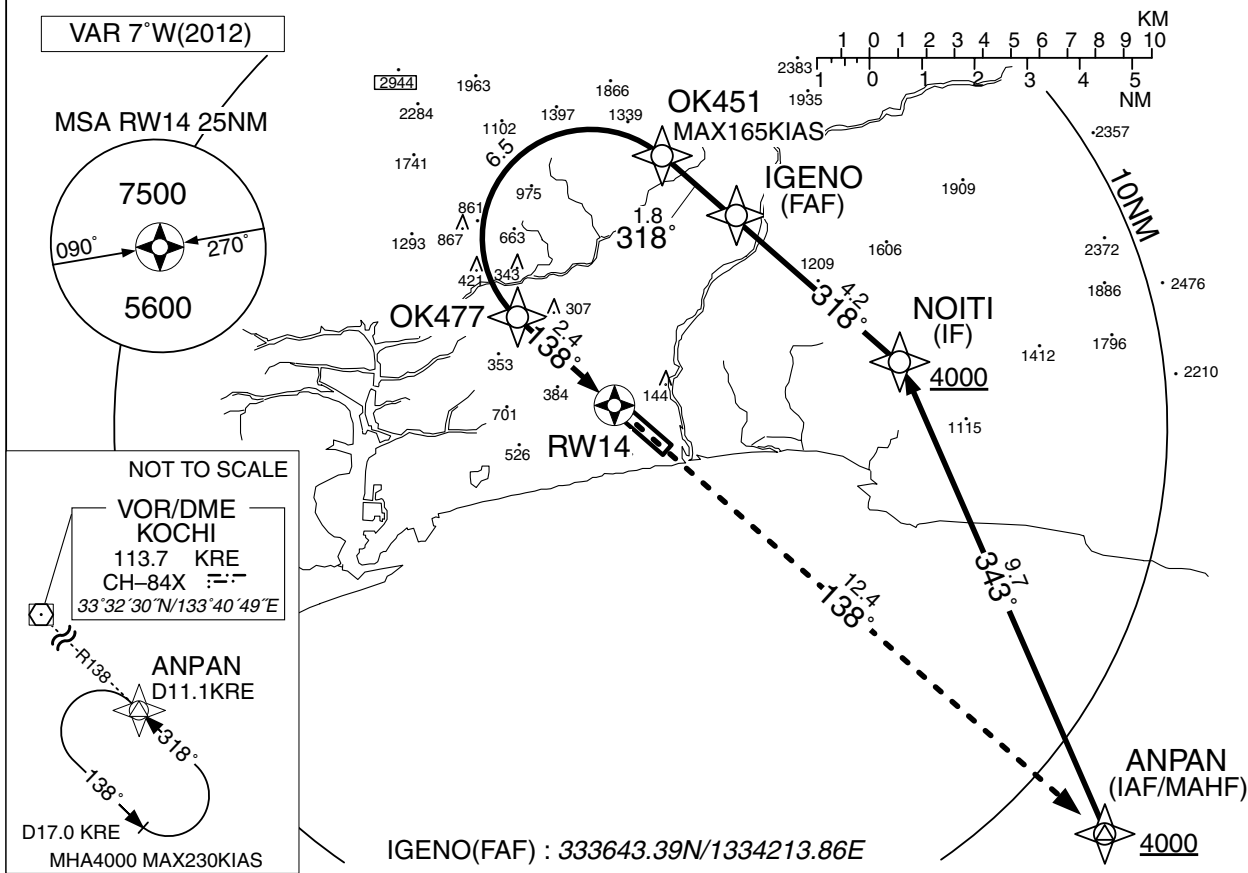
INSTRUMENT APPROACH CHART

RJOK / KOCHI

➔ RNAV(RNP) Z RWY14

KANSAI APP 125.0-261.2-124.8	GNSS and RF required.	KOCHI TOWER 118.75 - 126.2	RADAR AVBL ATIS 126.45
---------------------------------	-----------------------	-------------------------------	---------------------------

For uncompensated Baro-VNAV systems, procedure NA below -5°C / above 45°C



24.6 14.9 10.7 8.9 2.4 NM to THR

MINIMA THR elev.42 AD elev.29		
CAT	RNP 0.30	
	DA(H)	CMV
A	-	-
B	-	-
C	611(569)	1600
D		1800

**RNP AR**  
Special Authorization Required

INSTRUMENT APPROACH CHART

RJOK / KOCHI

➔ RNAV(RNP) Z RWY14

RNAV(RNP) Z RWY14

Coding Table

Serial Number	Path Descriptor	Waypoint Identifier	Fly Over	Course °M(°T)	Magnetic Variation	Distance (NM)	Turn Direction	Altitude (FT)	Speed (KIAS)	VPA/RDH (°/FT)	RNP Value
001	IF	ANPAN	—	—	-6.9	—	—	+4000	—	—	—
002	TF	NOITI	—	343 (335.9)	-6.9	9.7	—	+4000	—	—	1.0
003	TF	IGENO	—	318 (310.7)	-6.9	4.2	—	3500	—	—	1.0
004	TF	OK451	—	318 (310.7)	-6.9	1.8	—	—	-165	—	0.3
005	RF Center: OKRF1 r=2.07NM	OK477	—	—	-6.9	6.5	L	—	—	—	0.3
006	TF	RW14	Y	138 (130.6)	-6.9	2.4	—	—	—	-3.00/50	0.3
007	TF	ANPAN	—	138 (130.6)	-6.9	12.4	—	4000	—	—	1.0

Waypoint Coordinates

Waypoint Identifier	Coordinates	RF Arc Center Identifier	Coordinates
ANPAN	332507.54N/1335048.52E	OKRF1	333620.13N/1333858.11E
NOITI	333400.03N/1334602.07E		
IGENO	333643.39N/1334213.86E		
OK451	333754.48N/1334034.43E		
OK477	333445.76N/1333721.85E		
RW14	333312.04N/1333932.98E		



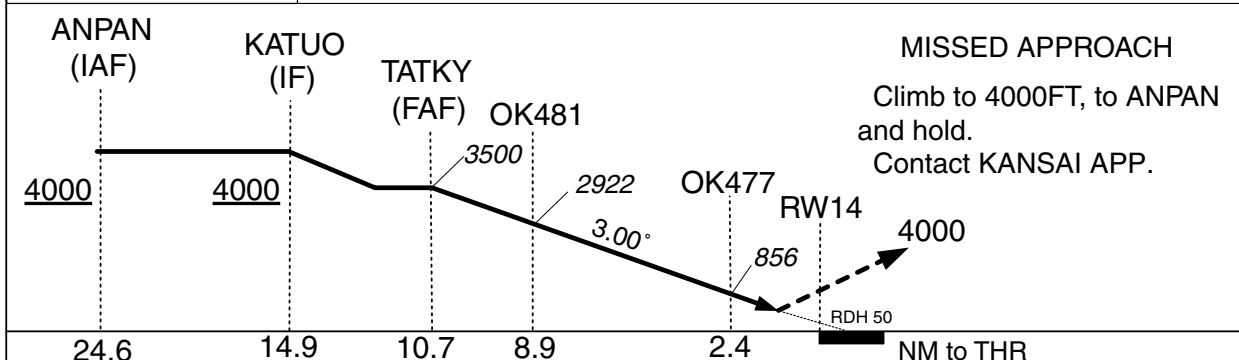
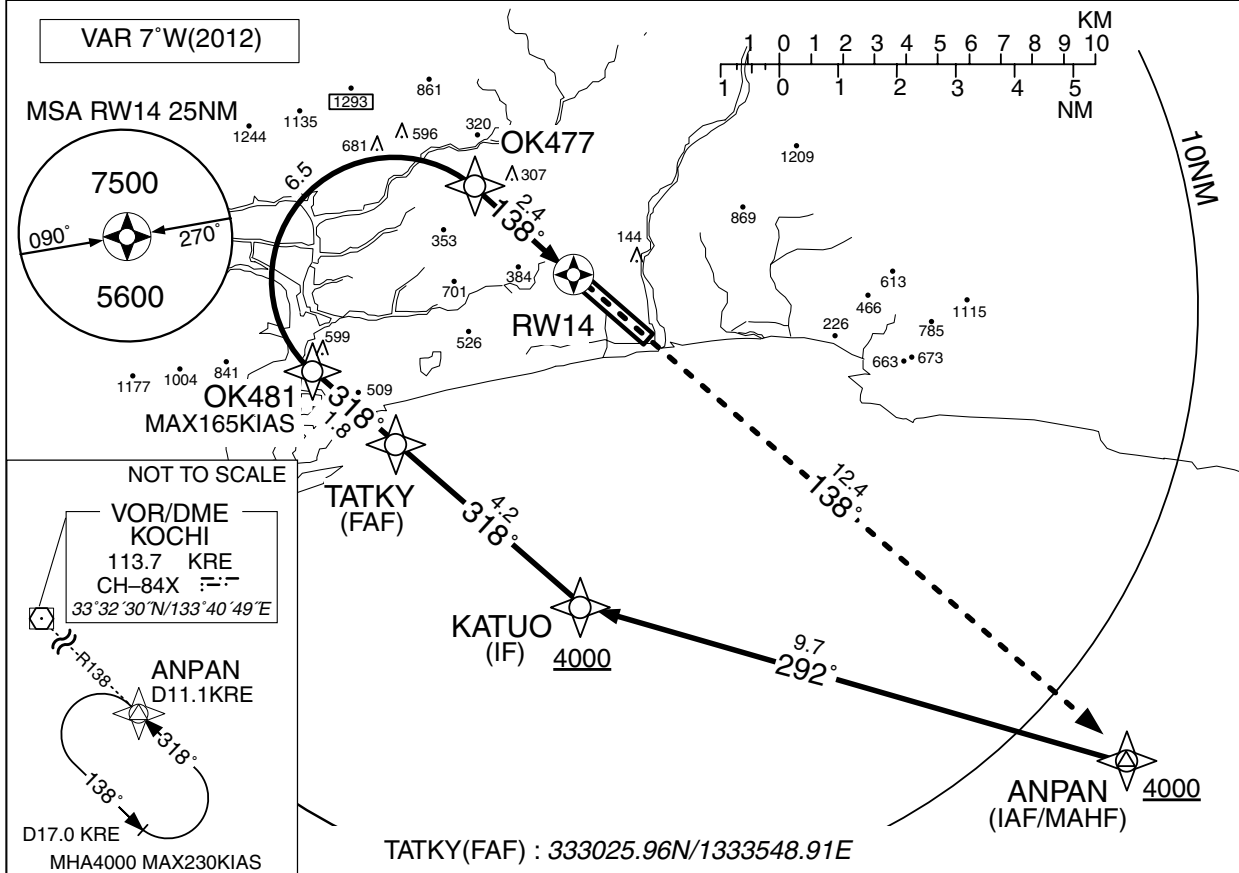
INSTRUMENT APPROACH CHART

RJOK / KOCHI

➔ RNAV(RNP) Y RWY14

KANSAI APP 125.0-261.2-124.8	GNSS and RF required.	KOCHI TOWER 118.75 - 126.2	RADAR AVBL ATIS 126.45
---------------------------------	-----------------------	-------------------------------	---------------------------

For uncompensated Baro-VNAV systems, procedure NA below -5°C / above 45°C



MINIMA		THR elev.42	AD elev.29
CAT	RNP 0.30		
	DA(H)	CMV	
A	-	-	
B	-	-	
C	611(569)	1600	
D	-	1800	

**RNP AR**  
Special Authorization Required

INSTRUMENT APPROACH CHART

RJOK / KOCHI

➔ RNAV(RNP) Y RWY14

RNAV(RNP) Y RWY14

Coding Table

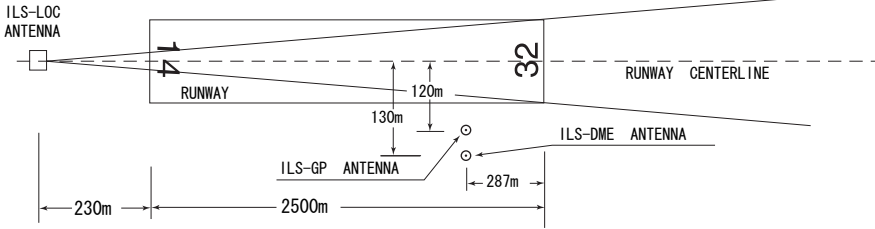
Serial Number	Path Descriptor	Waypoint Identifier	Fly Over	Course °M(°T)	Magnetic Variation	Distance (NM)	Turn Direction	Altitude (FT)	Speed (KIAS)	VPA/RDH (°/FT)	RNP Value
001	IF	ANPAN	—	—	-6.9	—	—	+4000	—	—	—
002	TF	KATUO	—	292 (285.5)	-6.9	9.7	—	+4000	—	—	1.0
003	TF	TATKY	—	318 (310.6)	-6.9	4.2	—	3500	—	—	1.0
004	TF	OK481	—	318 (310.6)	-6.9	1.8	—	—	-165	—	0.3
005	RF Center: OKRF2 r=2.07NM	OK477	—	—	-6.9	6.5	R	—	—	—	0.3
006	TF	RW14	Y	138 (130.6)	-6.9	2.4	—	—	—	-3.00/50	0.3
007	TF	ANPAN	—	138 (130.6)	-6.9	12.4	—	4000	—	—	1.0

Waypoint Coordinates

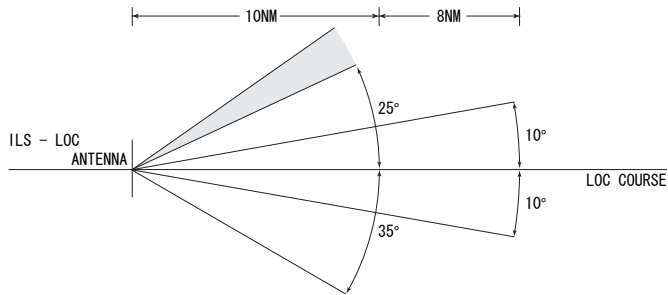
Waypoint Identifier	Coordinates	RF Arc Center Identifier	Coordinates
ANPAN	332507.54N/1335048.52E	OKRF2	333311.37N/1333545.65E
KATUO	332742.79N/1333937.02E		
TATKY	333025.96N/1333548.91E		
OK481	333136.96N/1333409.51E		
OK477	333445.76N/1333721.85E		
RW14	333312.04N/1333932.98E		

# ILS

## KOCHI AIRPORT



REMARKS:	1 . LOC beam BRG (MAG)	317°
	2 . HGT of ILS REF datum	15.5m (51ft)
	3 . GP angle	3.0°
	4 . ELEV of ILS-DME	10.7m (35ft)



UNUSABLE : BEYOND 25DEG NORTH EAST (150Hz) SIDE OF COURSE DUE TO TERRAIN.