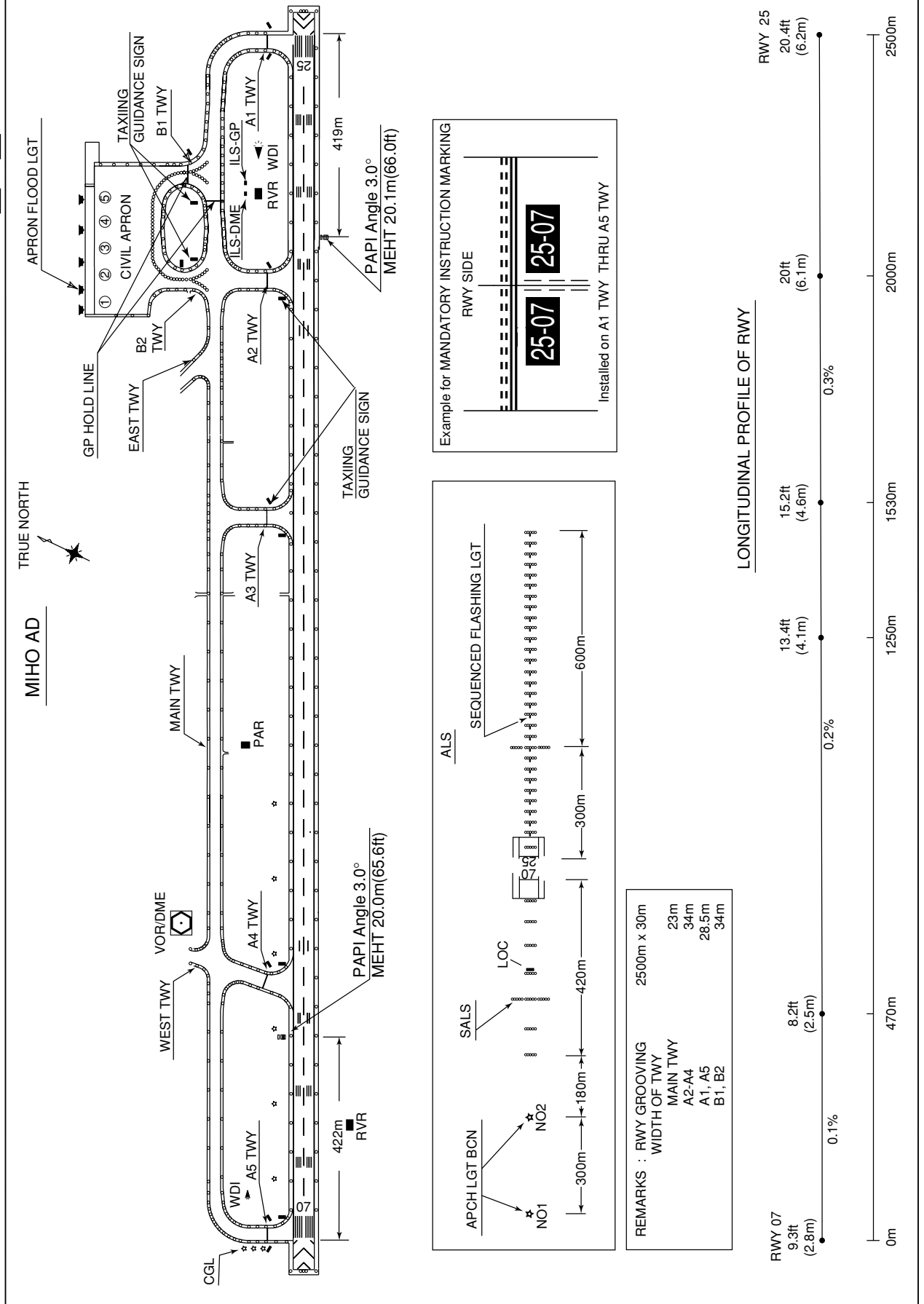


RJOH / MIHO

AD CHART



STANDARD DEPARTURE CHART - INSTRUMENT

RJOH / MIHO

SID

MIHO REVERSAL TWO DEPARTURE

RWY 07 : Climb RWY HDG to 1000FT or above, turn left....

RWY 25 : Turn left....

....Climb via HDG 040° to intercept and proceed via JEC R070, turn left, proceed via JEC R055 to JEC VORTAC within JEC 35.0DME.

Cross JEC R077 at or below 6000FT ,cross JEC R055/24.0DME at assigned altitude.

Note: For RWY 25, following climb gradient should be maintained until passing 1000FT (for civil), 2100FT (for military).

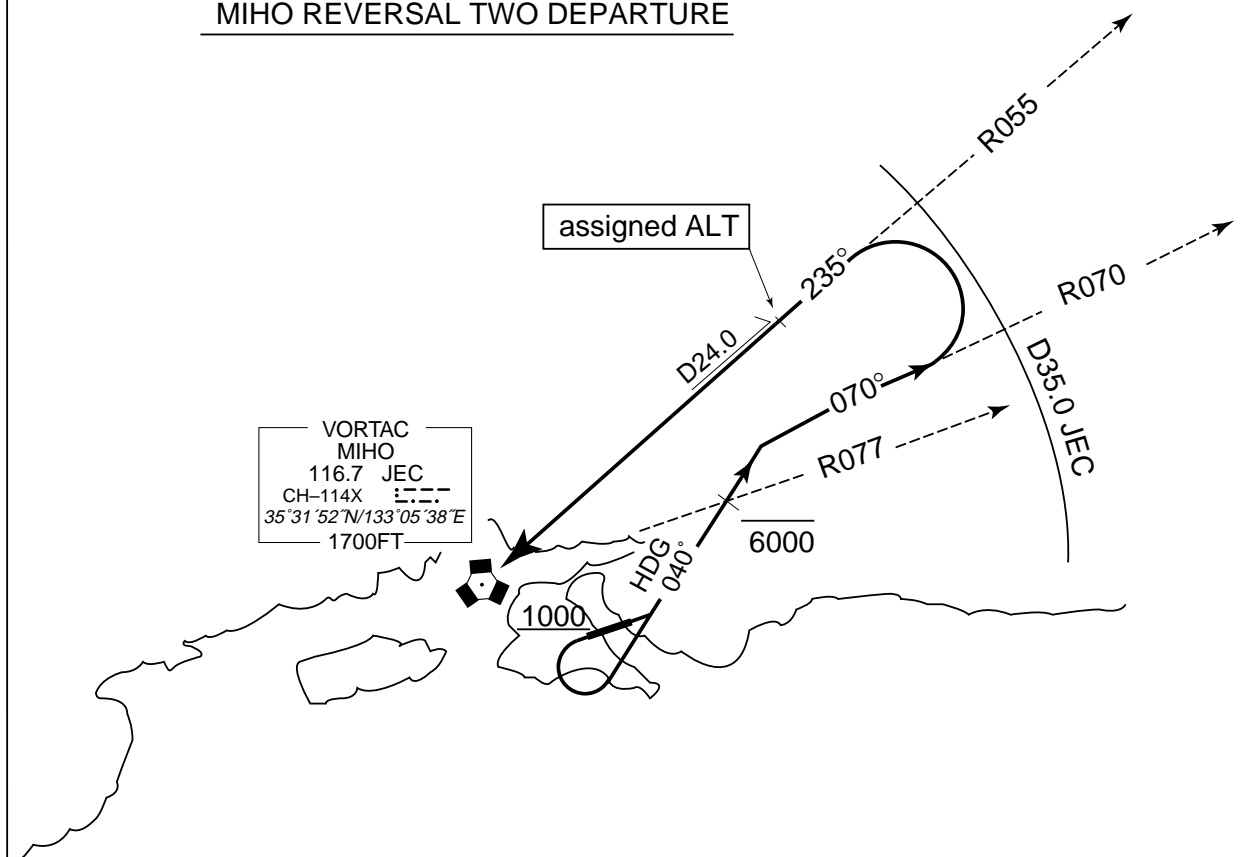
For civil

Speed (Knots)	60	90	120	150	180	210
Rate (Feet/Min)	300	450	600	750	900	1050

For military

Speed (Knots)	60	120	180	240	300	360
Rate (Feet/Min)	300	600	900	1200	1500	1800

MIHO REVERSAL TWO DEPARTURE



STANDARD DEPARTURE CHART - INSTRUMENT

RJOH / MIHO

SID

YONAGO REVERSAL FIVE DEPARTURE

RWY 07 : Climb RWY HDG to 1000FT or above, turn left....

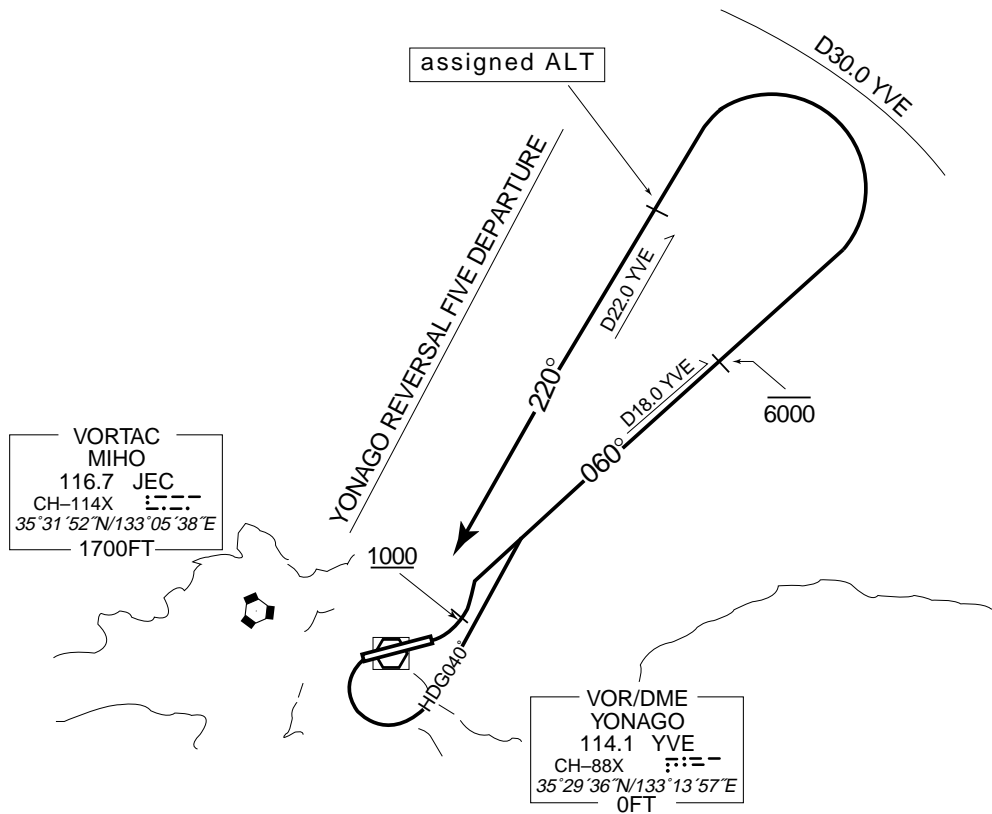
RWY 25 : Turn left HDG040°

...Climb via YVE R060, turn left to intercept and proceed via YVE R040 to YVE VOR/DME within YVE 30.0DME.

Cross YVE R060/18.0DME at or below 6000FT, cross YVE R040/22.0DME at assigned altitude.

Note: For RWY 25, following climb gradient should be maintained until passing 1000FT.

Speed (Knots)	60	90	120	150	180	210
Rate (Feet/Min)	300	450	600	750	900	1050



STANDARD DEPARTURE CHART -INSTRUMENT

RJOH / MIHO

SID and TRANSITION

INABA TWO DEPARTURE

RWY07 : Climb RWY HDG to 1000FT or above, turn left,....

RWY25 : Turn left HDG040°,....

....Climb via YVE R060 to INABA.

Cross YVE R060/18.0DME(TRE R293) at or below 6000FT.

Note : When take off RWY25, following climb gradient should be maintained until 1000FT.

Speed (Knots)	60	90	120	150	180	210
Rate (Feet/Min)	300	450	600	750	900	1050

TOZAN TRANSITION

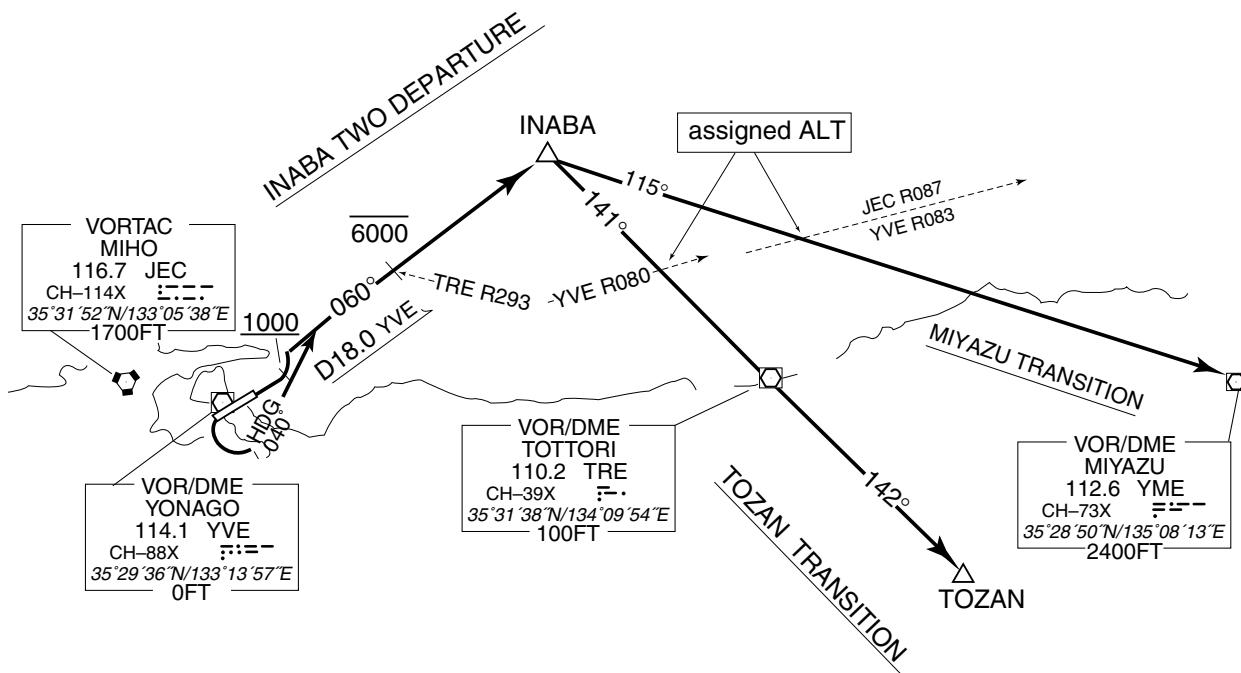
From over INABA, turn right, proceed via TRE R321 to TRE VOR/DME, via TRE R142 to TOZAN.

Cross YVE R080 at assigned altitude.

MIYAZU TRANSITION

From over INABA, turn right, proceed via YME R295 to YME VOR/DME.

Cross YVE R083 (JEC R087) at assigned altitude.



STANDARD DEPARTURE CHART - INSTRUMENT

RJOH / MIHO

SID

SOUTH FIVE DEPARTURE

RWY 07 : Turn right....

RWY 25 : Turn left....

...Climb via YVE R171 to NIIMI.

Cross YVE R171/7.0DME (JEC R143) at or below 6000FT, cross NIIMI at or above 5000FT.

Note: Following climb gradient should be maintained until passing 2500 FT.

Speed (Knots)	60	90	120	150	180	210
Rate (Feet/Min)	300	450	600	750	900	1050

KUGA TRANSITION

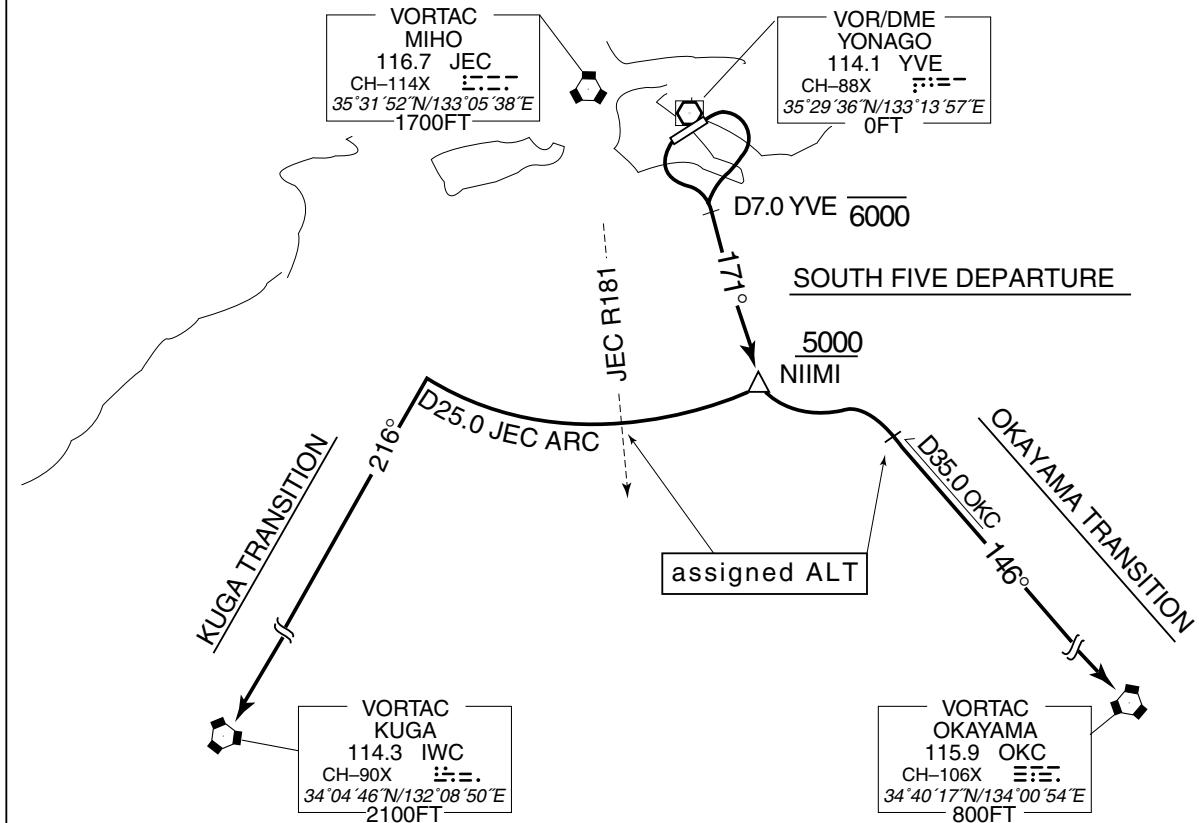
From over NIIMI, turn right, proceed via JEC 25.0DME clockwise ARC to intercept and proceed via JEC R216 to IWC VORTAC.

Cross JEC R181 at assigned altitude.

OKAYAMA TRANSITION

From over NIIMI, turn left to intercept and proceed via JEC R146 (OKC R326) to OKC VORTAC.

Cross OKC R326/35.0DME (JEC R146/34.0DME) at assigned altitude.



STANDARD DEPARTURE CHART - INSTRUMENT

RJOH / MIHO

SID

DOZEN THREE DEPARTURE

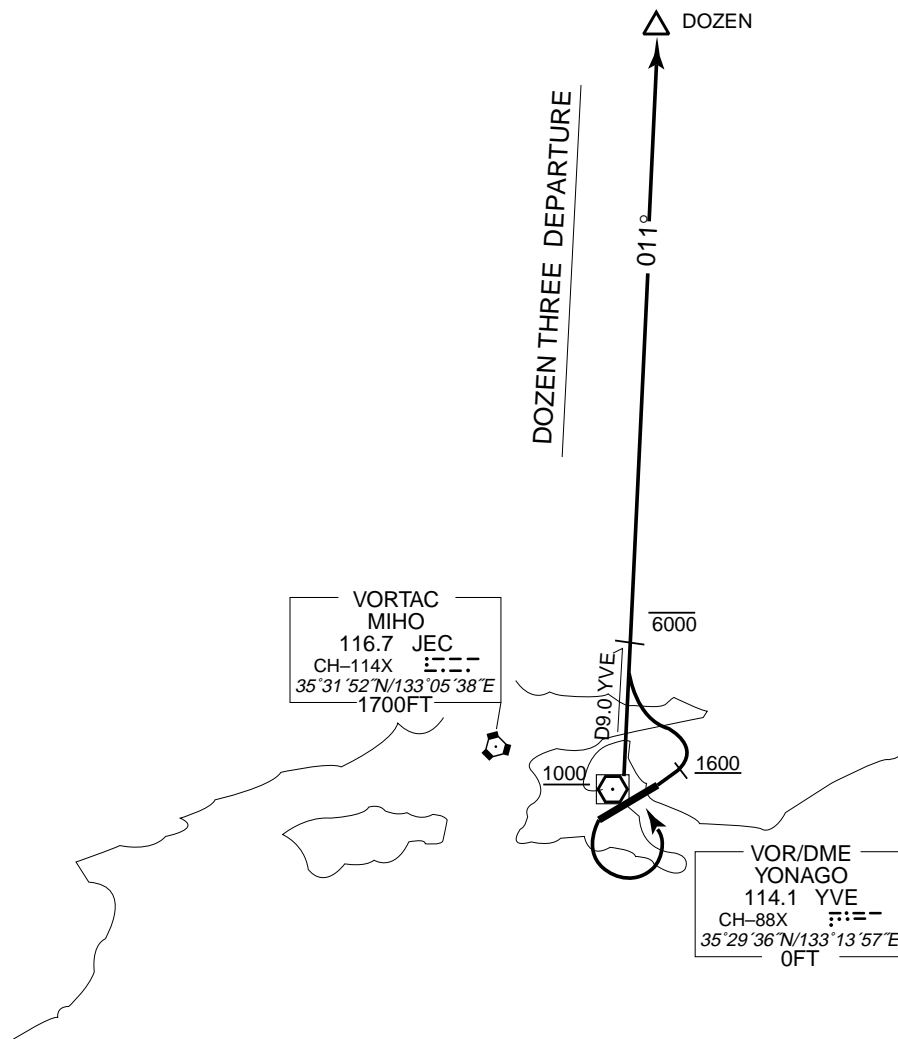
RWY07 : Climb RWY HDG to 1600FT or above, turn left,....

RWY25 : Turn left, climb cross YVE VOR/DME at or above 1000FT,....
....Climb via YVE R011 to DOZEN.

Cross YVE R011/ 9.0DME at or below 6000FT.

Note : When take off RWY25, following climb gradient should be maintained until 1000FT.

Speed (Knots)	60	90	120	150	180	210
Rate (Feet/Min)	300	450	600	750	900	1050



STANDARD ARRIVAL CHART - INSTRUMENT

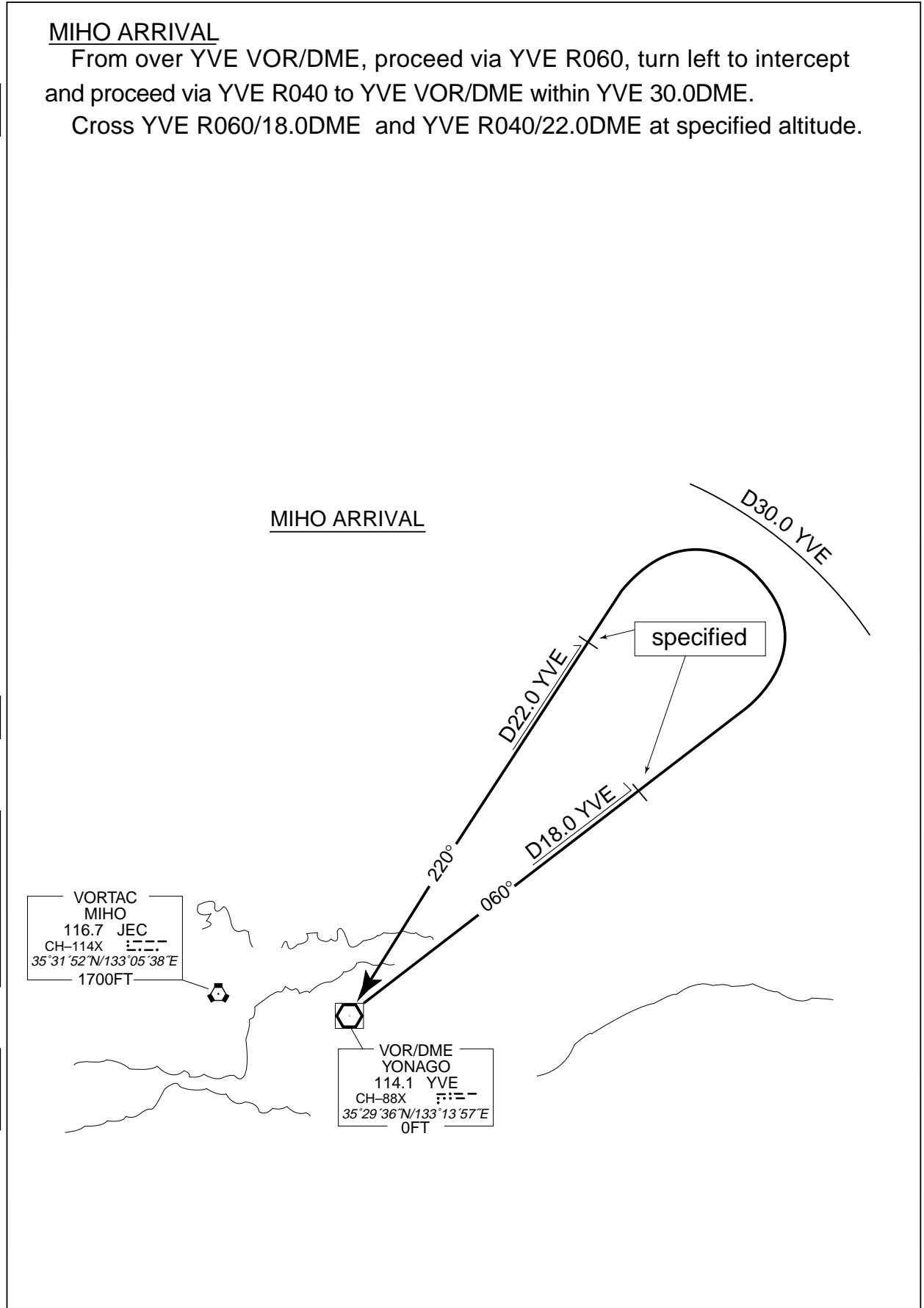
RJOH / MIHO

STAR

MIHO ARRIVAL

From over YVE VOR/DME, proceed via YVE R060, turn left to intercept and proceed via YVE R040 to YVE VOR/DME within YVE 30.0DME.

Cross YVE R060/18.0DME and YVE R040/22.0DME at specified altitude.



STANDARD ARRIVAL CHART - INSTRUMENT

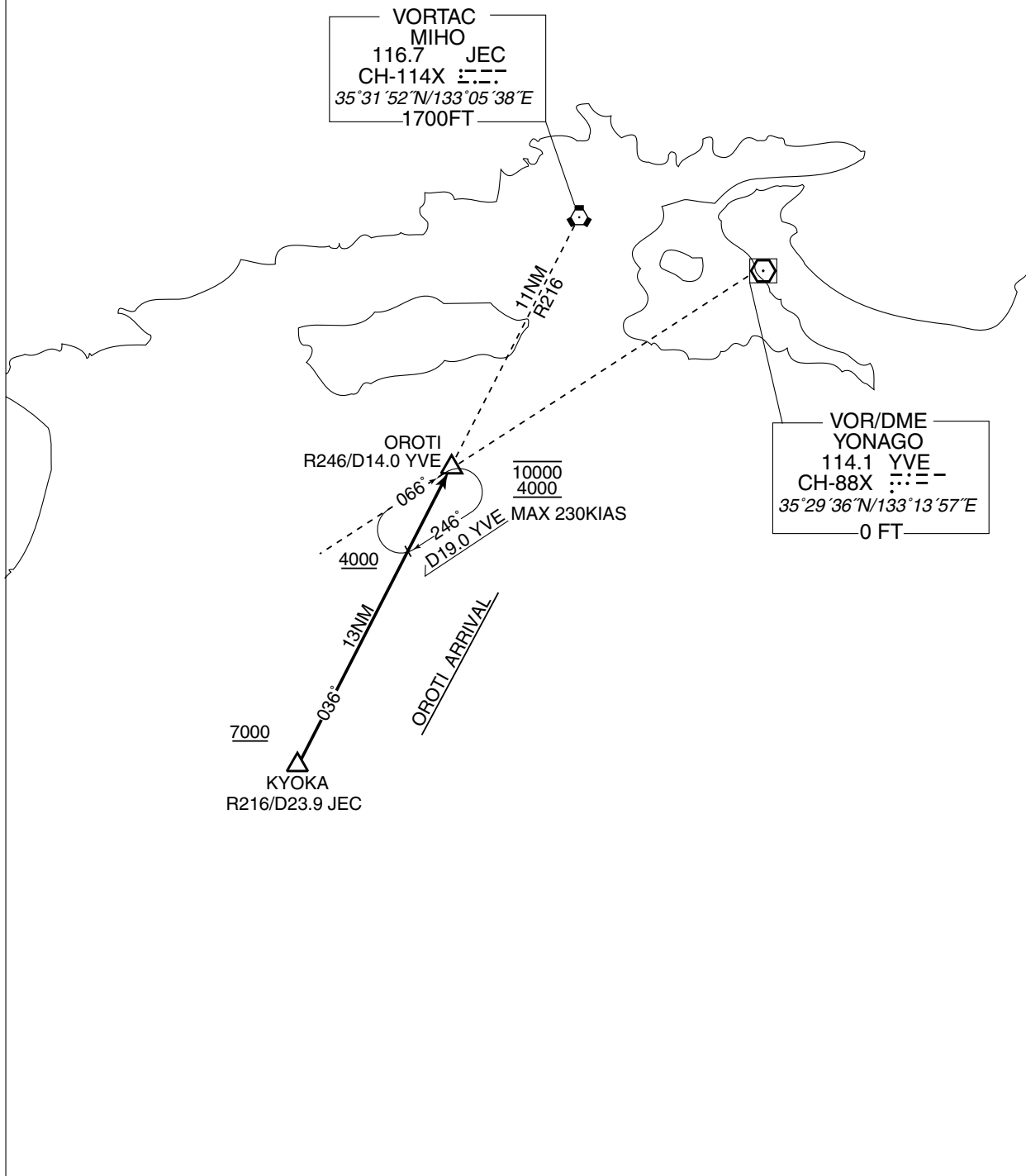
RJOH / MIHO

STAR

OROTI ARRIVAL

From over KYOKA, via JEC R216 to OROTI.

Cross KYOKA at or above 7000FT, cross OROTI at or above 4000FT.

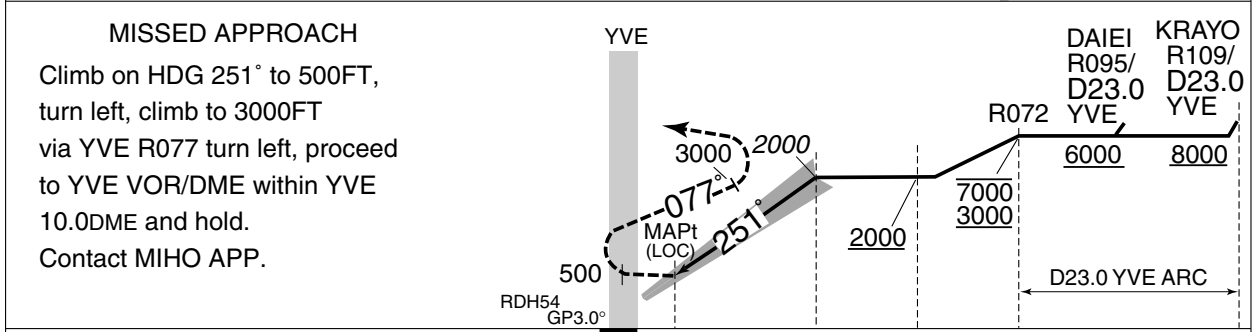
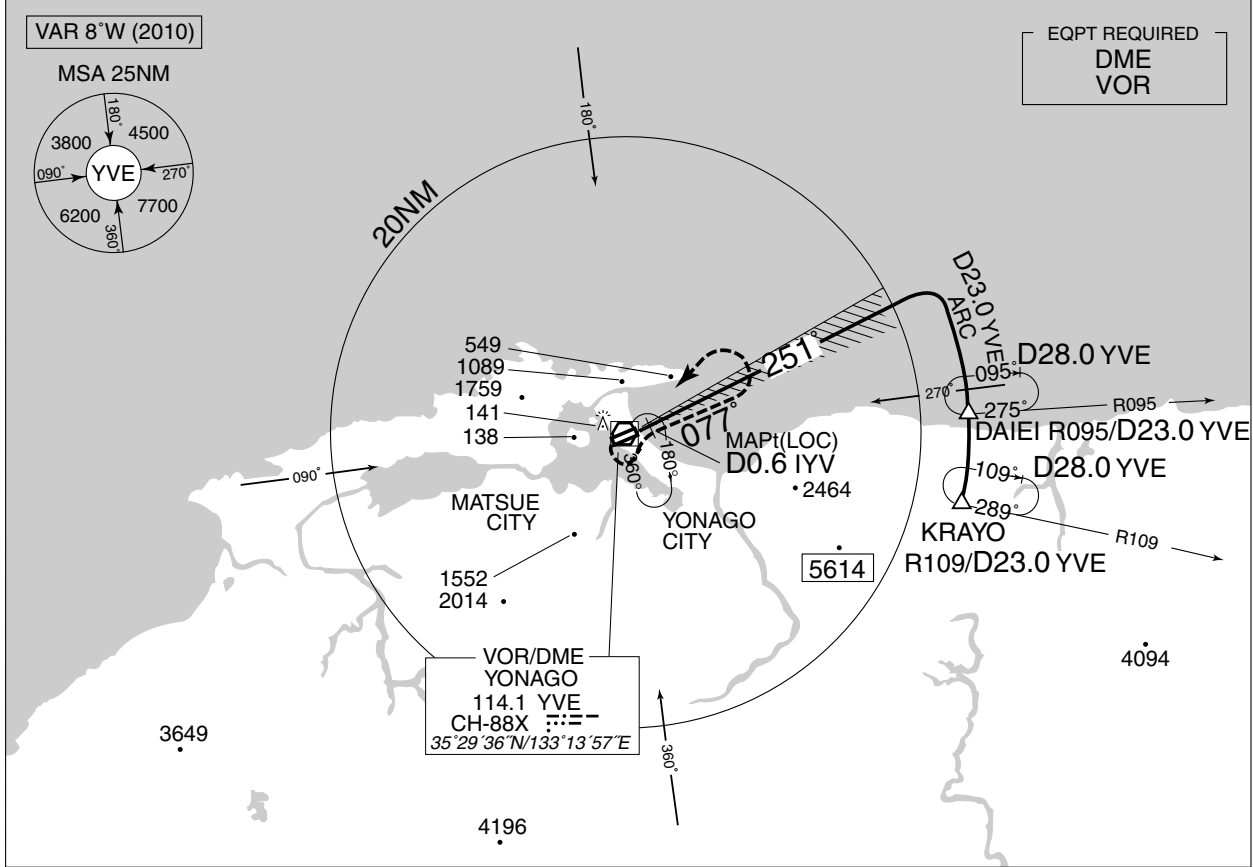


INSTRUMENT APPROACH CHART

RJOH / MIHO

ILS Z or LOC Z RWY 25

<p>MIHO APP 120.1 - 125.4 258.2 - 317.8</p>	<p>ILS-LOC 108.95 IYV $\equiv\equiv\equiv$ ILS-GP 329.15 ILS-DME CH-26Y</p>	<p>MIHO TWR 236.8 - 126.2 275.8G</p>	<p>GCA AVBL CALL MIHO APP</p>
---	--	--	---------------------------------------



DME to IYV	0.6	6.1	14.7
NM to THR	0.5	5.9	14.5

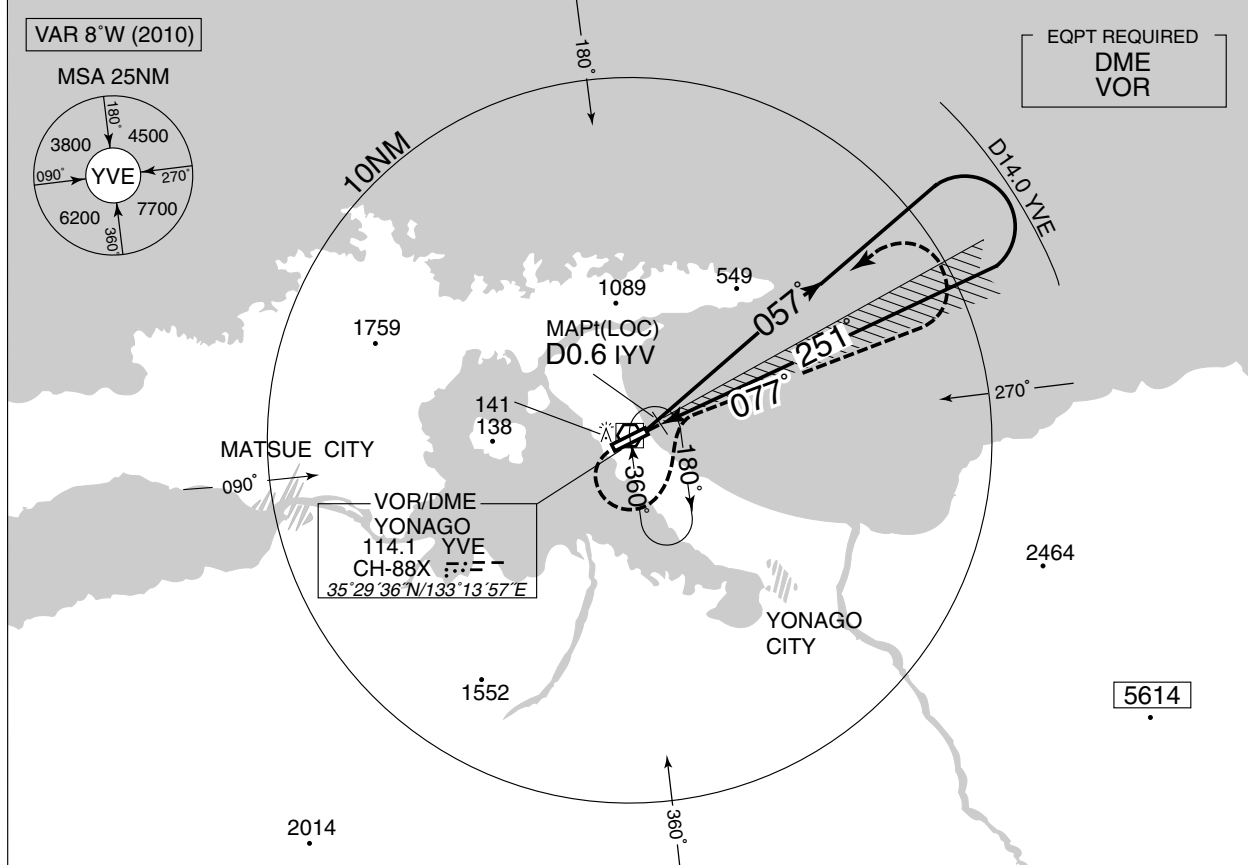
MINIMA		THR elev. 20		AD elev. 13		
CAT	CAT I		LOC		CIRCLING	
	DA(H)	RVR/CMV	MDA(H)	RVR/CMV	MDA(H)	VIS
A	220 (200)	750	320 (307)	900	460 (447)	1600
B				1000	480 (467)	
C				1400	580 (567)	2400
D						3200

INSTRUMENT APPROACH CHART

RJOH / MIHO

ILS Y or LOC Y RWY 25

MIHO APP 120.1 – 125.4 258.2 – 317.8	ILS-LOC 108.95 IYV $\equiv\equiv\equiv-$ ILS-GP 329.15 ILS-DME CH-26Y	MIHO TWR 236.8 - 126.2 275.8G	GCA AVBL CALL MIHO APP
--	--	-------------------------------------	------------------------------



MISSED APPROACH
Climb on HDG 251° to 500FT, turn left, climb to 3000FT via YVE R077, turn left, proceed to YVE VOR/DME within YVE 10.0DME and hold. Contact MIHO APP.

Remain within D14.0 YVE

DME to IYV	0.6	6.1
NM to THR	0.5	5.9

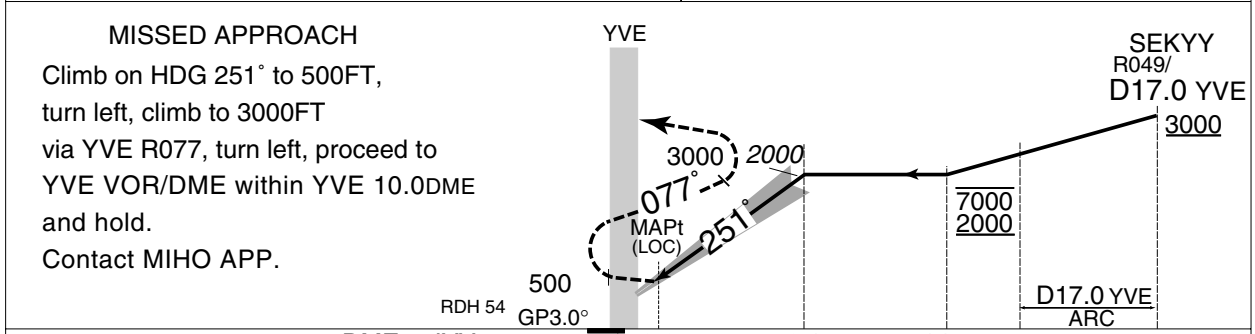
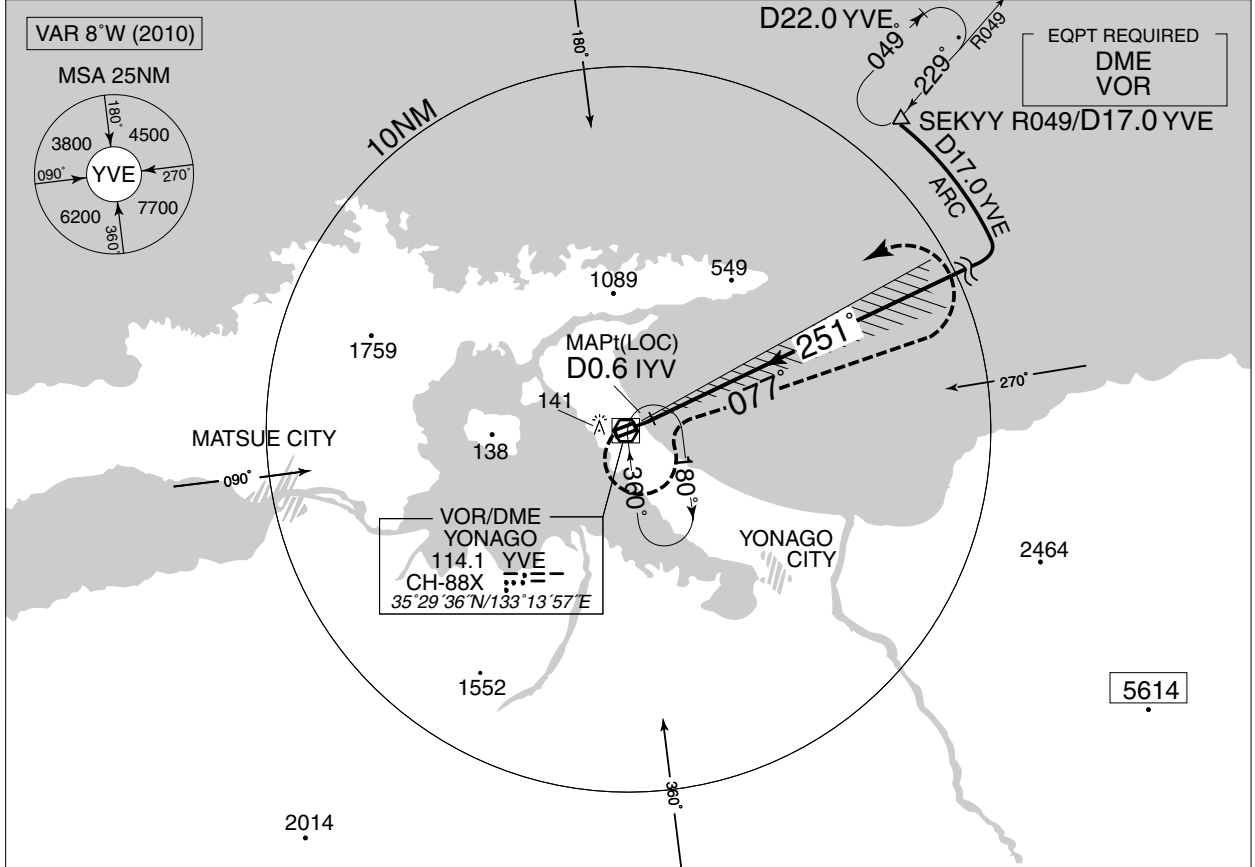
MINIMA		THR elev. 20		AD elev. 13		
CAT	CAT I		LOC		CIRCLING	
	DA(H)	RVR/CMV	MDA(H)	RVR/CMV	MDA(H)	VIS
A	220 (200)	750	320 (307)	900	460 (447)	1600
B				1000	480 (467)	
C						2400
D				1400	580 (567)	3200

INSTRUMENT APPROACH CHART

RJOH / MIHO

ILS X or LOC X RWY 25

MIHO APP 120.1 – 125.4 258.2 – 317.8	ILS-LOC 108.95 IYV $\equiv::=$ ILS-GP 329.15 ILS-DME CH-26Y	MIHO TWR 236.8 - 126.2 275.8G	GCA AVBL CALL MIHO APP
--	--	-------------------------------------	------------------------------



DME to IYV	0.6	6.1	14.7
NM to THR	0.5	5.9	14.5

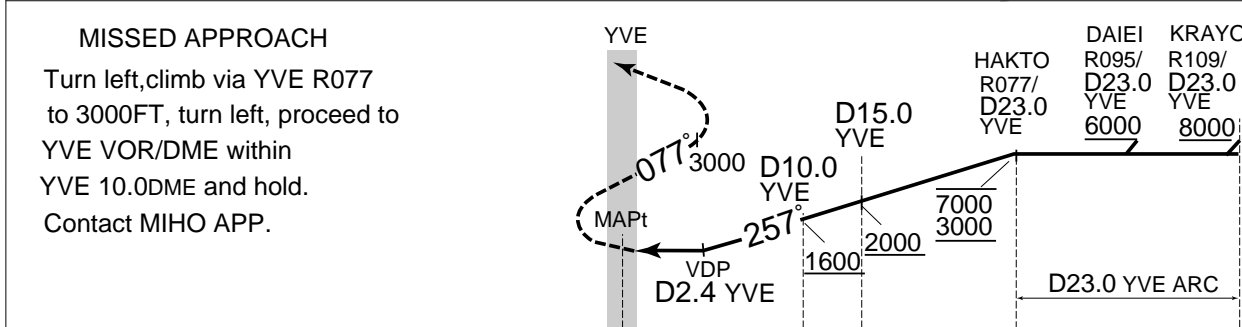
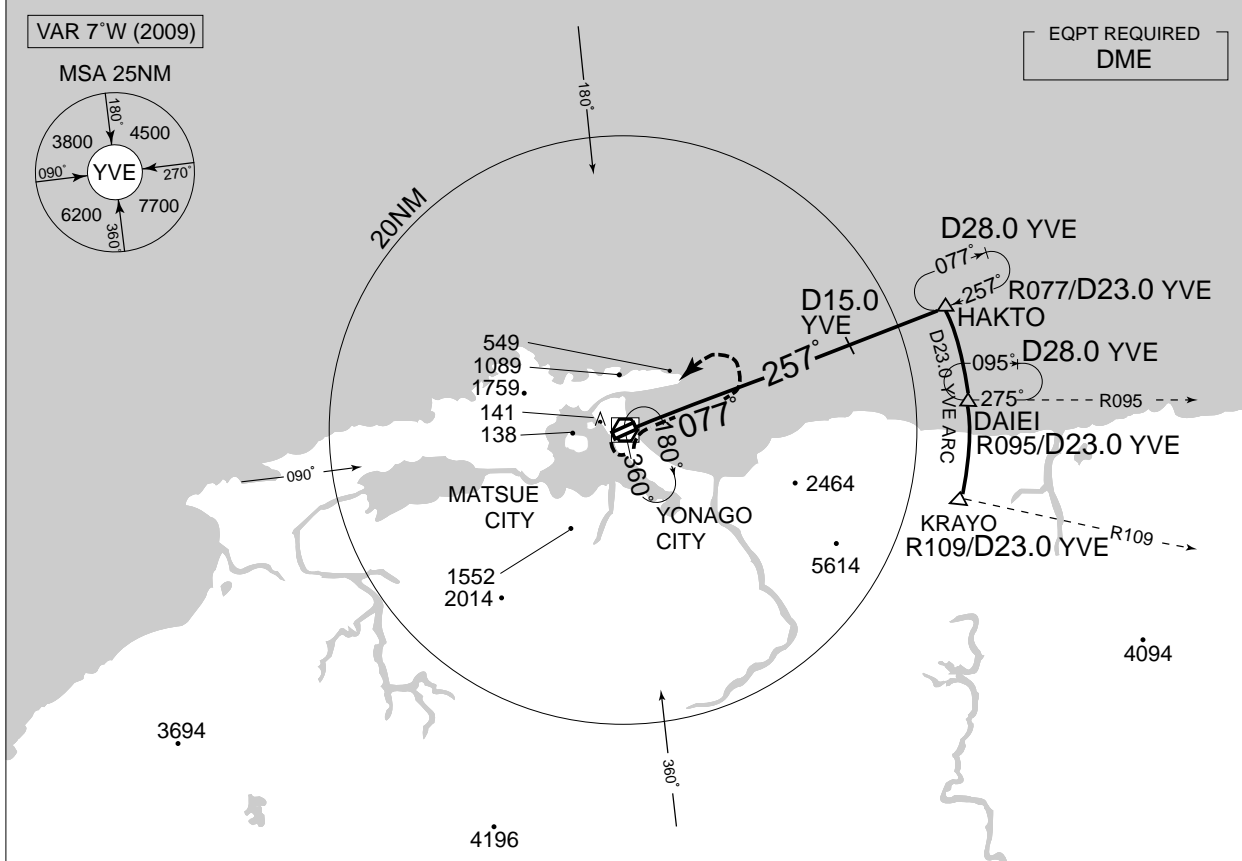
MINIMA		THR elev. 20		AD elev. 13		
CAT	CAT I		LOC		CIRCLING	
	DA(H)	RVR/CMV	MDA(H)	RVR/CMV	MDA(H)	VIS
A	220 (200)	750	320 (307)	900	460 (447)	1600
B				1000	480 (467)	
C						2400
D				1400	580 (567)	3200

INSTRUMENT APPROACH CHART

RJOH / MIHO

VOR Z RWY 25

MIHO APP 120.1 – 125.4 258.2 – 317.8	YONAGO VOR/DME 114.1 YVE CH-88X $\ddot{\vdots} \vdash \vdash \vdash$ 35°29'36"N / 133°13'57"E	MIHO TWR 236.8 - 126.2 275.8G	GCA AVBL CALL MIHO APP
--	--	-------------------------------------	------------------------------



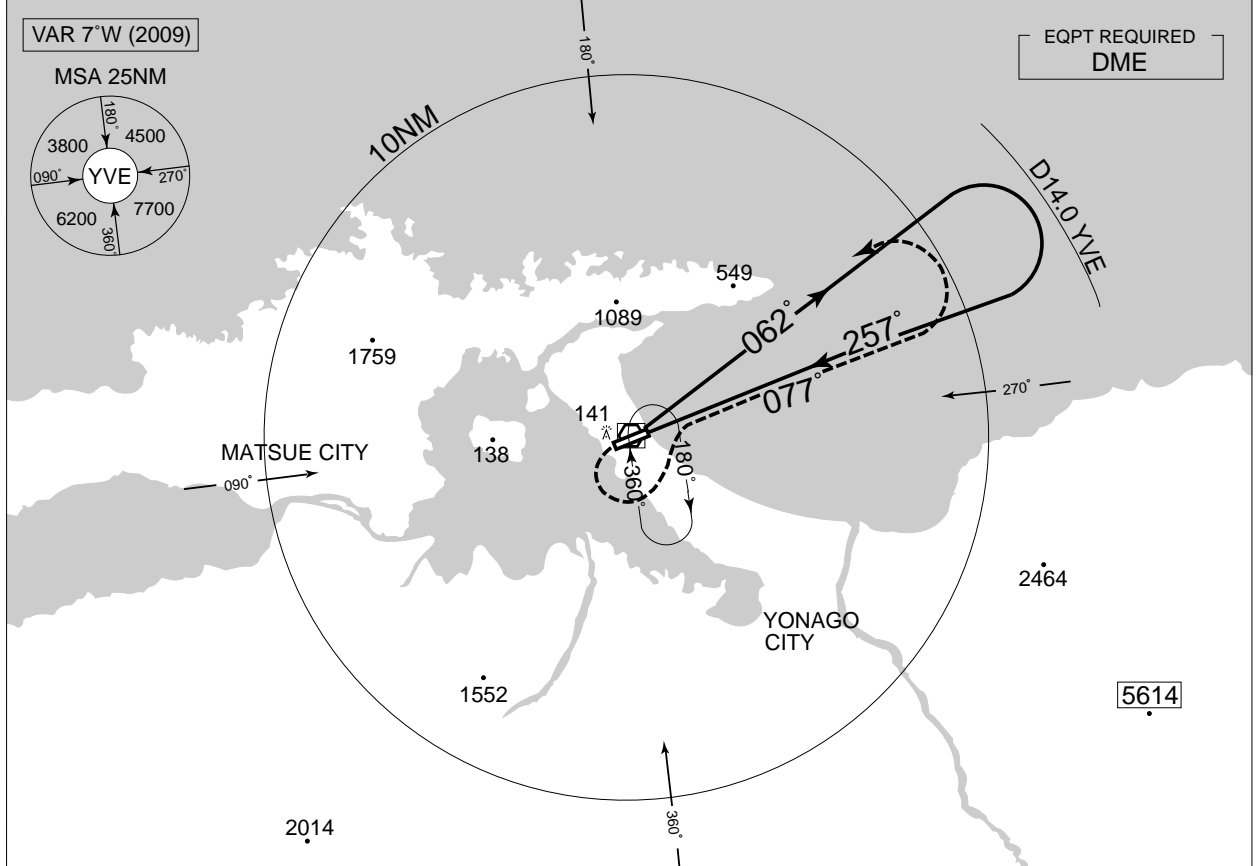
MINIMA		THR elev. 20	AD elev. 13	
CAT	MDA(H)	RVR/ CMV	CIRCLING	
			MDA(H)	VIS
A	500 (487)	1000	500 (487)	1600
B		1200		
C		1600		
D		1600	580 (567)	3200

INSTRUMENT APPROACH CHART

RJOH / MIHO

VOR Y RWY 25

MIHO APP 120.1 – 125.4 258.2 – 317.8	YONAGO VOR/DME 114.1 YVE CH-88X $\ddot{\cdot}\ddot{\cdot}=\ddot{\cdot}\ddot{\cdot}$ 35°29'36"N/133°13'57"E	MIHO TWR 236.8-126.2 275.8G	GCA AVBL CALL MIHO APP
--	---	-----------------------------------	------------------------------



MISSED APPROACH

Turn left, climb via YVE R077 to 3000FT, turn left, proceed to YVE VOR/DME within YVE 10.0DME and hold. Contact MIHO APP.

Remain within D14.0 YVE

3000 YVE

062°

077°

D10.0 YVE

257°

1600

MAPt

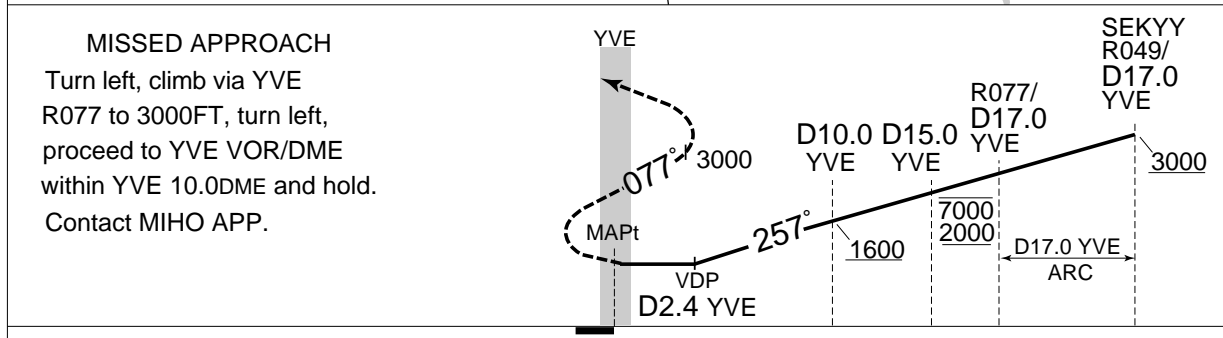
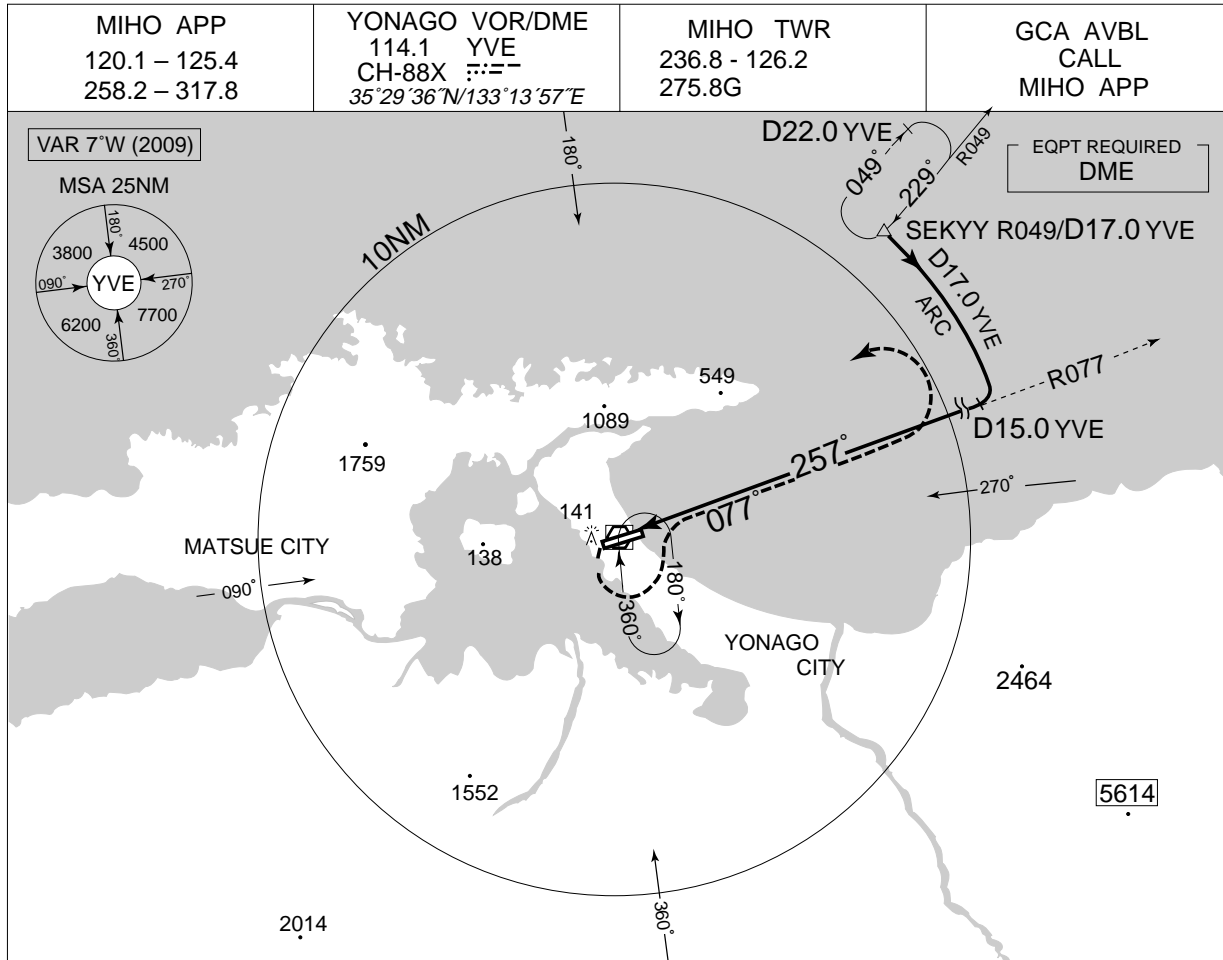
VDP D2.4 YVE

MINIMA		THR elev. 20	AD elev. 13	CIRCLING	
CAT	MDA(H)	RVR/CMV	MDA(H)	VIS	
A	500 (487)	1000	500 (487)	1600	
B		1200		2400	
C			1600	3200	
D		580 (567)			

INSTRUMENT APPROACH CHART

RJOH / MIHO

VOR X RWY 25



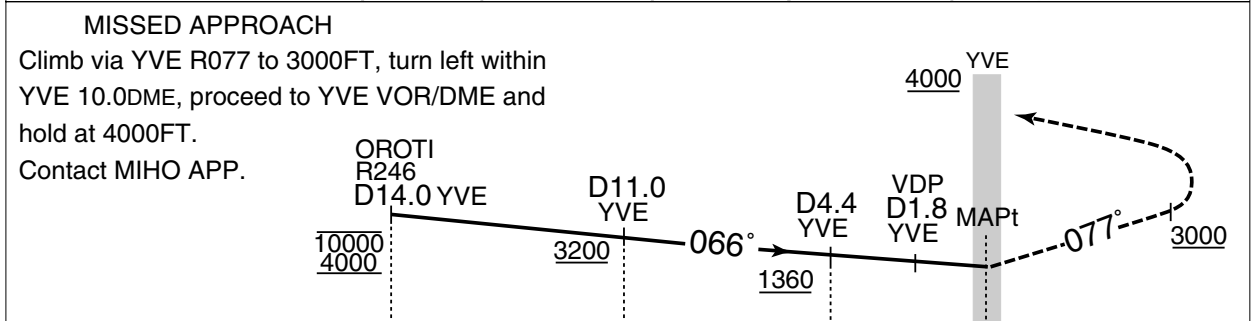
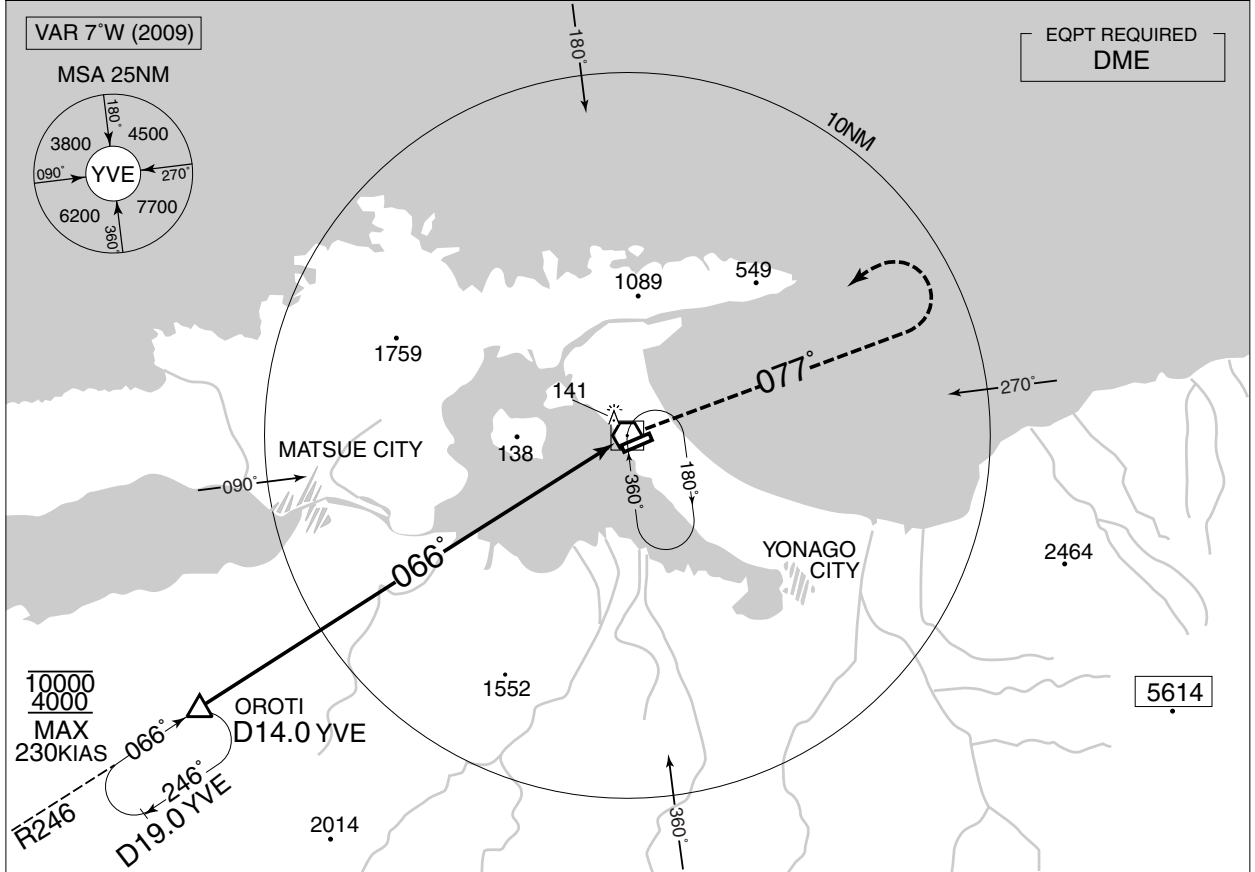
MINIMA	THR elev. 20	AD elev. 13			
CAT			CIRCLING		
	MDA(H)	RVR/ CMV	MDA(H)	VIS	
A	500 (487)	1000	500 (487)	1600	
B		1200		2400	
C		1600		580 (567)	3200
D					

INSTRUMENT APPROACH CHART

RJOH / MIHO

VOR Z RWY 07

MIHO APP 120.1 – 125.4 258.2 – 317.8	YONAGO VOR/DME 114.1 YVE CH-88X 35°29'36"N/133°13'57"E	MIHO TWR 236.8 – 126.2 275.8G	GCA AVBL CALL MIHO APP
--	---	-------------------------------------	------------------------------



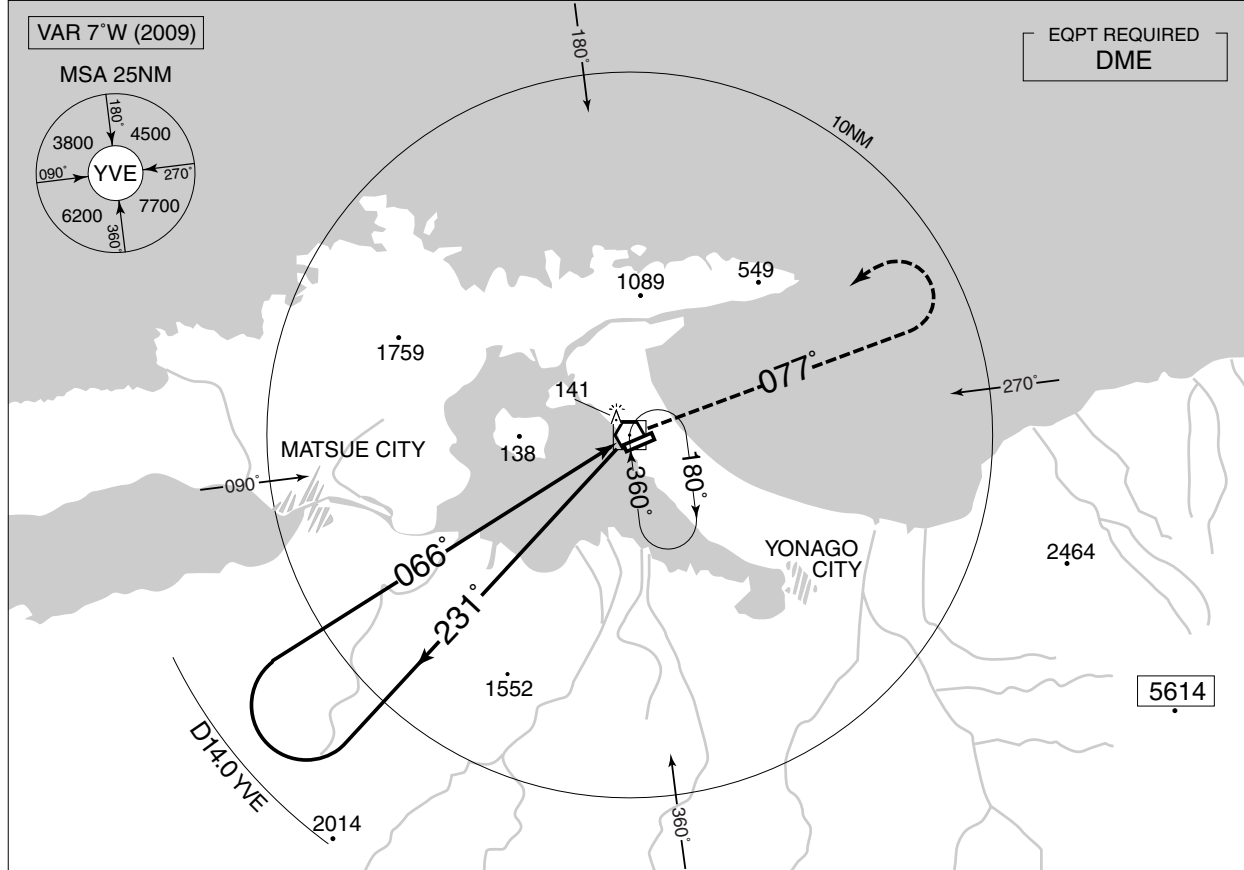
MINIMA		THR elev. 9	AD elev. 13	
CAT	MDA(H)	RVR/ CMV	CIRCLING	
			MDA(H)	VIS
A	500 (487)	1400	500 (487)	1600
B		1500		
C		1600	2400	
D		1800	580 (567)	3200

INSTRUMENT APPROACH CHART

RJOH / MIHO

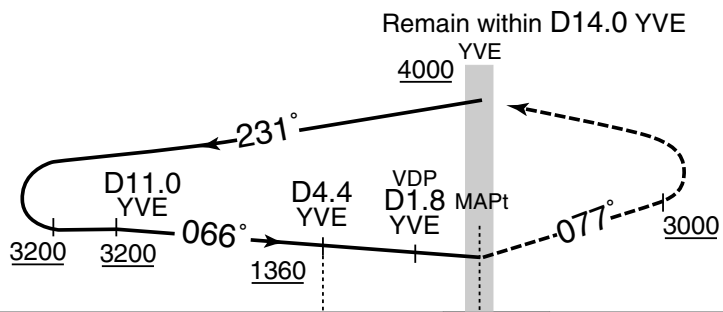
VOR Y RWY 07

<p>MIHO APP 120.1 – 125.4 258.2 – 317.8</p>	<p>YONAGO VOR/DME 114.1 YVE CH-88X 35°29'36"N/133°13'57"E</p>	<p>MIHO TWR 236.8 – 126.2 275.8G</p>	<p>GCA AVBL CALL MIHO APP</p>
---	---	--	---------------------------------------



MISSED APPROACH

Climb via YVE R077 to 3000FT, turn left within YVE 10.0DME, proceed to YVE VOR/DME and hold at 4000FT. Contact MIHO APP.



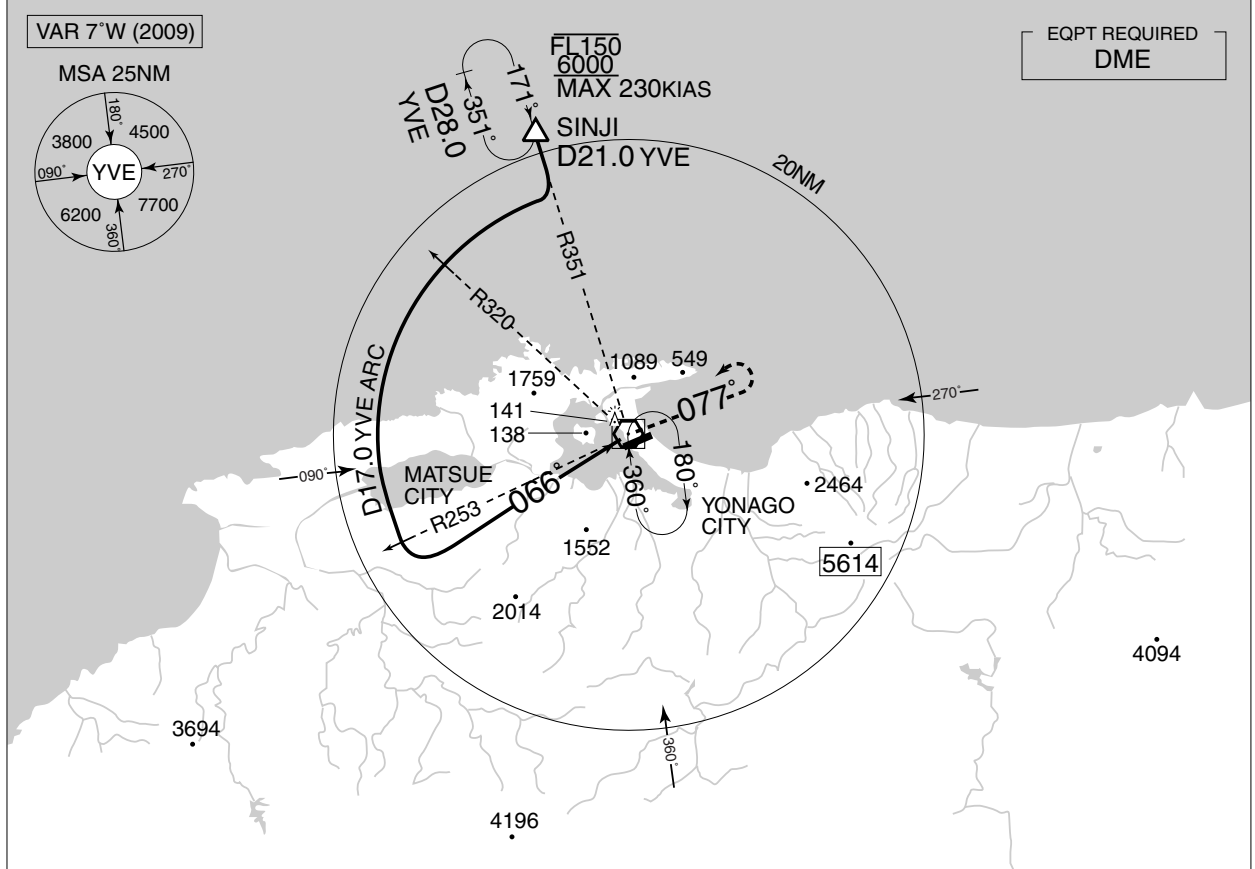
CAT	MINIMA		THR elev. 9		AD elev. 13	
	MDA(H)	RVR/CMV	CIRCLING		MDA(H)	VIS
A	500 (487)	1400	500 (487)	1600	580 (567)	3200
B		1500				
C		1600				
D		1800				

INSTRUMENT APPROACH CHART

RJOH / MIHO

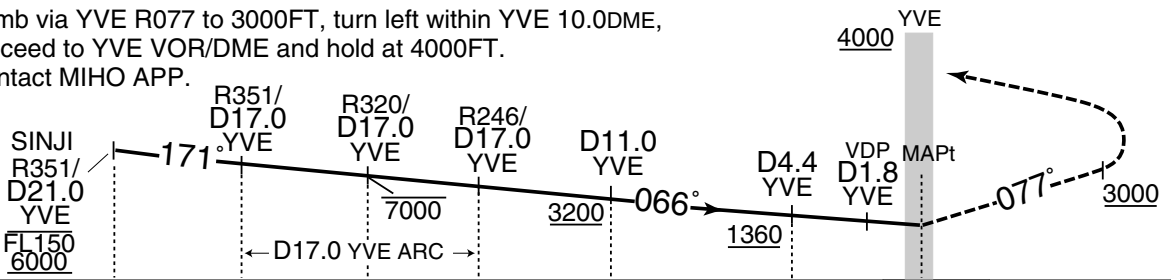
VOR X RWY 07

MIHO APP 120.1 – 125.4 258.2 – 317.8	YONAGO VOR/DME 114.1 YVE CH-88X 35°29'36"N/133°13'57"E	MIHO TWR 236.8 – 126.2 275.8G	GCA AVBL CALL MIHO APP
--	---	-------------------------------------	------------------------------



MISSED APPROACH

Climb via YVE R077 to 3000FT, turn left within YVE 10.0DME, proceed to YVE VOR/DME and hold at 4000FT. Contact MIHO APP.



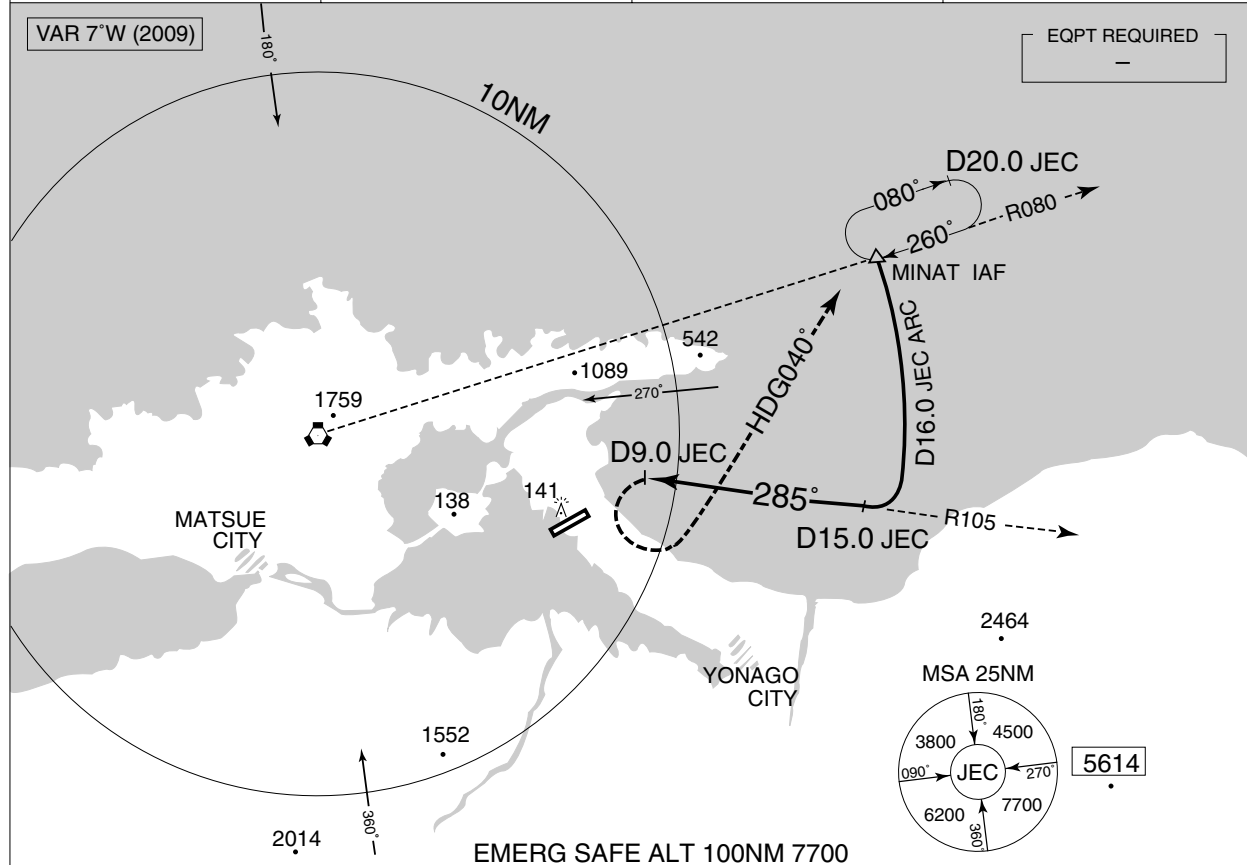
MINIMA		THR elev. 9	AD elev. 13	
CAT			CIRCLING	
	MDA(H)	RVR/CMV	MDA(H)	VIS
A	500 (487)	1400	500 (487)	1600
B		1500		
C		1600		
D		1800		

INSTRUMENT APPROACH CHART

RJOH / MIHO

TACAN A

MIHO APP 120.1 – 125.4 258.2 – 317.8	MIHO VORTAC 116.7 JEC CH-114X 35°31'52"N/133°05'41"E	MIHO TWR 236.8 - 126.2 275.8G	GCA AVBL CALL MIHO APP
--	---	-------------------------------------	------------------------------

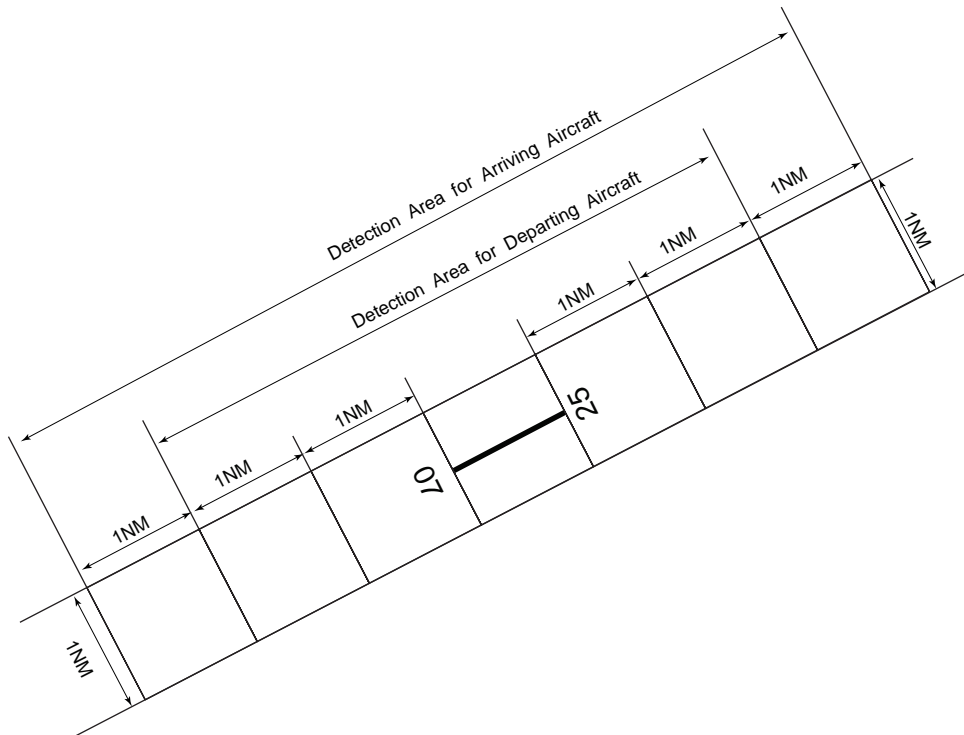


EMERG SAFE ALT 100NM 7700

MISSED APPROACH
Turn left, climb to 4000FT on HDG 040° to intercept JEC R080, proceed to MINAT IAF and hold. Cross JEC R105 at or above 1400FT. Contact MIHO APP.

MINIMA		AD elev. 13	
CAT	CIRCLING		VIS
	MDA(H)		
A	800 (787)		1600
B			2400
C			3200
D			

Airspace for the advisory service concerning low level wind shear

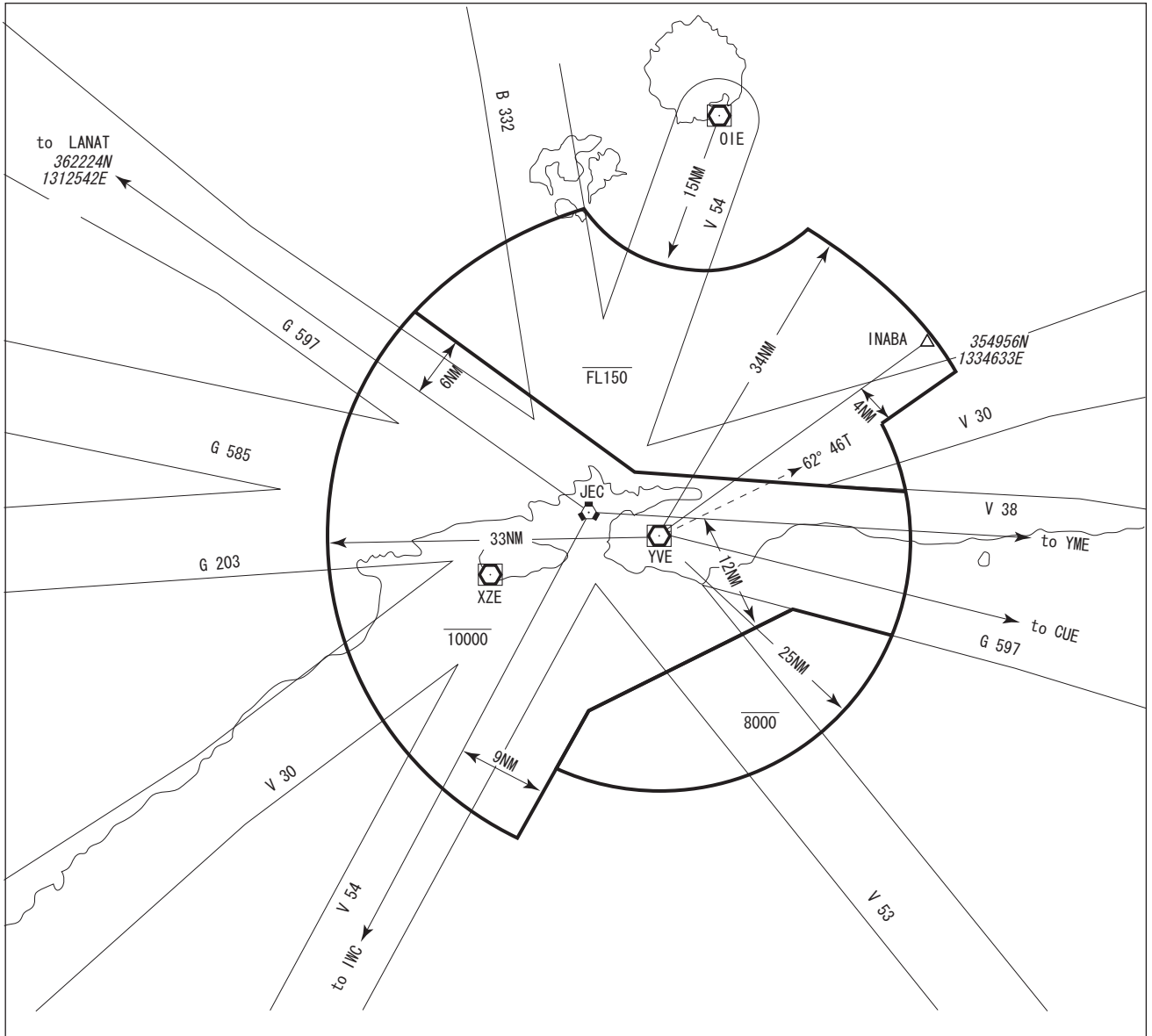


UPPER LIMIT : 1600ft above FIELD ELEV LEVEL

LOWER LIMIT : FIELD ELEV LEVEL

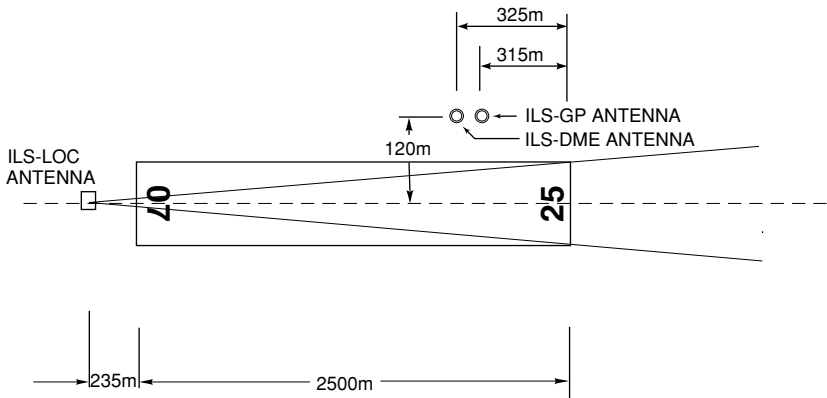
美保進入管制区

Mihoho Approach Control Area



ILS

MIHO AERODROME



REMARKS :	1. LOC beam BRG (MAG)	251°
	2. HGT of ILS REF datum	16.5m(54ft)
	3. GP Angle	3.0°
	4. ELEV of ILS-DME	9.6m(32ft)