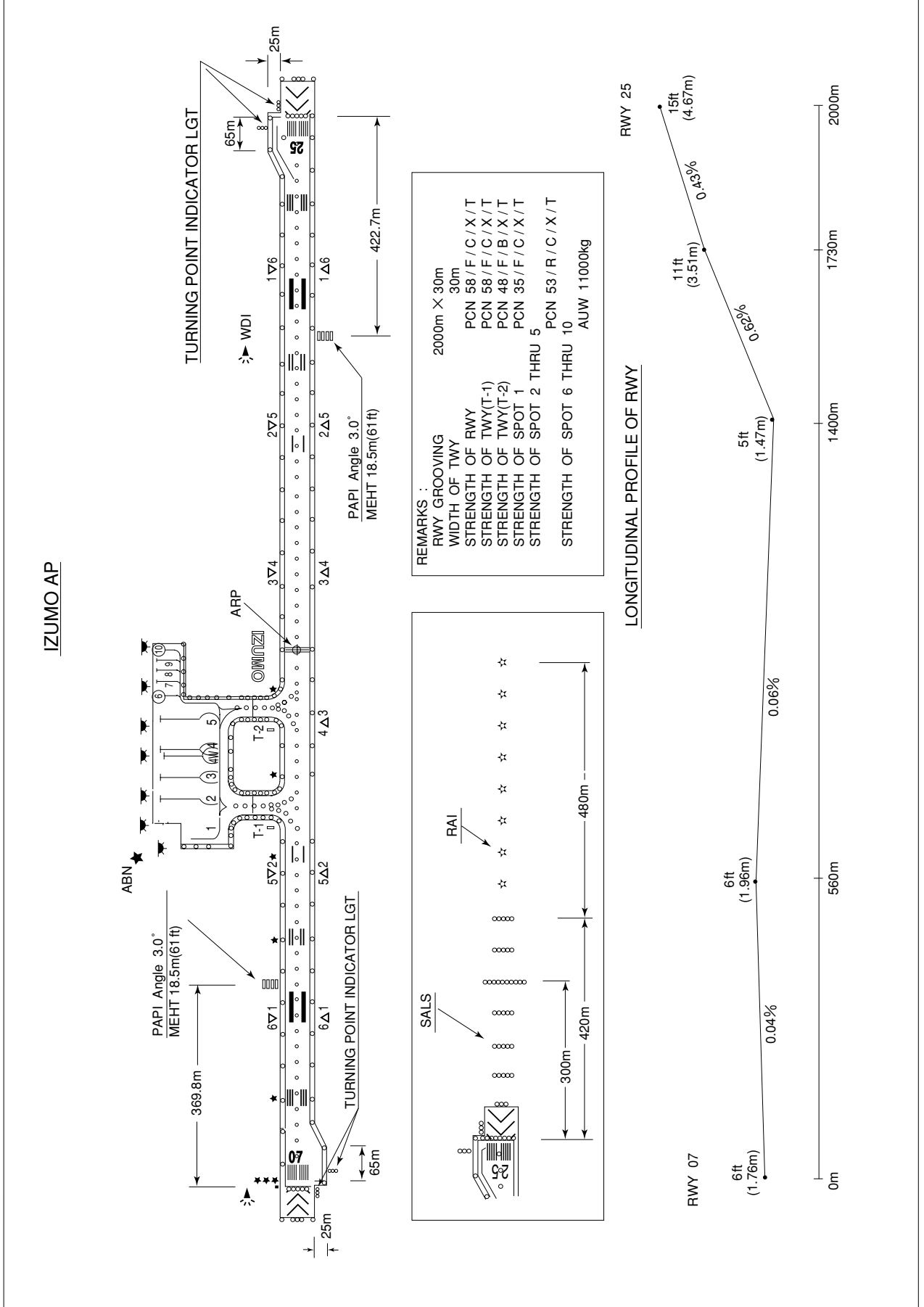


RJOC / IZUMO

AD CHART



STANDARD DEPARTURE CHART -INSTRUMENT

RJOC / IZUMO

SID

TOTTORI SIX DEPARTURE

RWY 07 : Climb via XZE R066 to 1200 FT or above, turn left HDG 330° within XZE 6.0DME,...

RWY 25 : Turn right within 3.0NM,....
....proceed via XZE R015 to 15.0DME, turn right to intercept and proceed via OIE R220 to OIE VOR/DME, via OIE R141 to TRE VOR/DME, via TRE R142 to TOZAN.

Cross XZE R015/15.0DME at or below 7000 FT, cross OIE VOR/DME at or above FL160,cross INABA at assigned altitude.

NOTE : When take off RWY25, following climb gradient should be maintained until 1100FT.

Speed (Knots)	60	90	120	150	180	210
Rate (Feet/Min)	300	450	600	750	900	1050

DOZEN THREE DEPARTURE

RWY07 : Climb via XZE R066 to 1200FT or above, turn left HDG 330° within XZE 6.0DME,....

RWY25 : Turn right within 3.0NM,....
....climb via XZE R034 to DOZEN.

Cross DOZEN at or above 5000FT.

Note : When take off RWY25, following climb gradient should be maintained until 1100FT.

Speed (Knots)	60	90	120	150	180	210
Rate (Feet/Min)	300	450	600	750	900	1050

MIHO TWO DEPARTURE

RWY07 : Climb via XZE R066 to 1200FT or above, turn left HDG 330° within XZE 6.0DME,....

RWY25 : Turn right within 3.0NM,....
....proceed via XZE R015, turn right to intercept and proceed via JEC R309 to JEC VORTAC.

Cross JEC VORTAC at or above 7000FT.

Note : When take off RWY25, following climb gradient should be maintained until 1100FT.

Speed (Knots)	60	90	120	150	180	210
Rate (Feet/Min)	300	450	600	750	900	1050

IZUMO REVERSAL THREE DEPARTURE

RWY 07 : Climb via XZE R066 to 1200 FT or above, turn left HDG 330° within XZE 6.0DME,...

RWY 25 : Turn right within 3.0NM,....
....proceed via XZE R015 to 3000 FT or above within XZE 15.0DME, turn left, proceed to XZE VOR/DME.

Cross XZE VOR/DME at or above 7000 FT.

NOTE : When take off RWY25, following climb gradient should be maintained until 1100FT.

Speed (Knots)	60	90	120	150	180	210
Rate (Feet/Min)	300	450	600	750	900	1050

STANDARD DEPARTURE CHART -INSTRUMENT

RJOC / IZUMO

SID

NIIMI THREE DEPARTURE

RWY07 :

RWY25 : Turn right within 3.5NM.....

.....climb via XZE R063 to JEC VORTAC, via JEC R116 to YVE VOR/DME, via YVE R171 to NIIMI.

Cross JEC VORTAC at or above 3500FT,
cross YVE R171/7.0DME(JEC R143) at or below 6000FT, cross NIIMI at or above 5000FT.

NOTE : When take off RWY25, following climb gradient should be maintained until 1400FT.

Speed (Knots)	60	90	120	150	180	210
Rate (Feet/Min)	300	450	600	750	900	1050

OKAYAMA TRANSITION

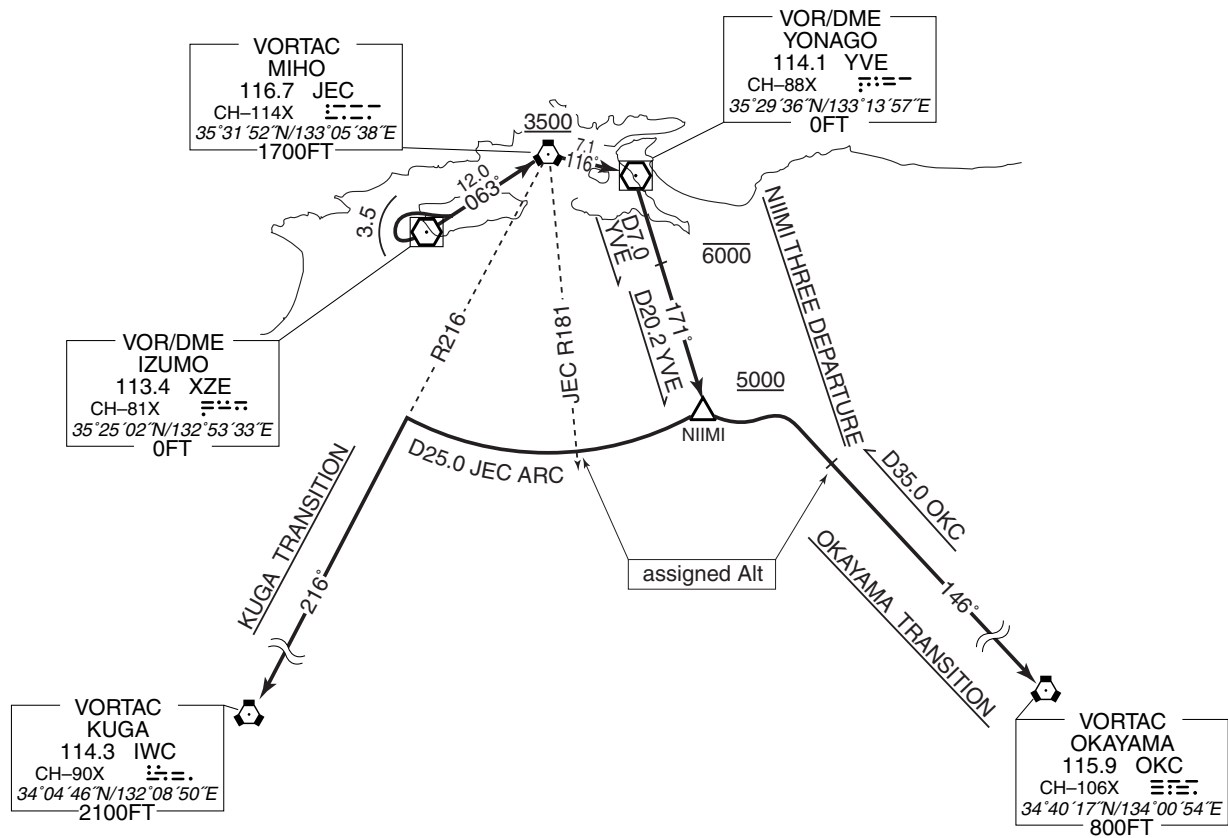
From over NIIMI, turn left to intercept and proceed via JEC R146(OKC R326) to OKC VORTAC.

Cross OKC R326/35.0DME(JEC R146/33.6DME) at assigned altitude.

KUGA TRANSITION

From over NIIMI, turn right and proceed via JEC 25.0DME clockwise ARC to intercept and proceed via JEC R216 to IWC VORTAC.

Cross JEC R181 at assigned altitude.



STANDARD DEPARTURE CHART -INSTRUMENT

RJOC / IZUMO

SID

INABA THREE DEPARTURE

RWY07:

RWY25: Turn right within 3.5NM.....
climb via XZE R063 to JEC VORTAC, via JEC R069 to INABA.
 Cross JEC VORTAC at or above 3500FT.
 Cross JEC R069/19.0DME (TRE R292) at or below 6000FT.

NOTE : When take off RWY25, following climb gradient should be maintained until 1400FT.

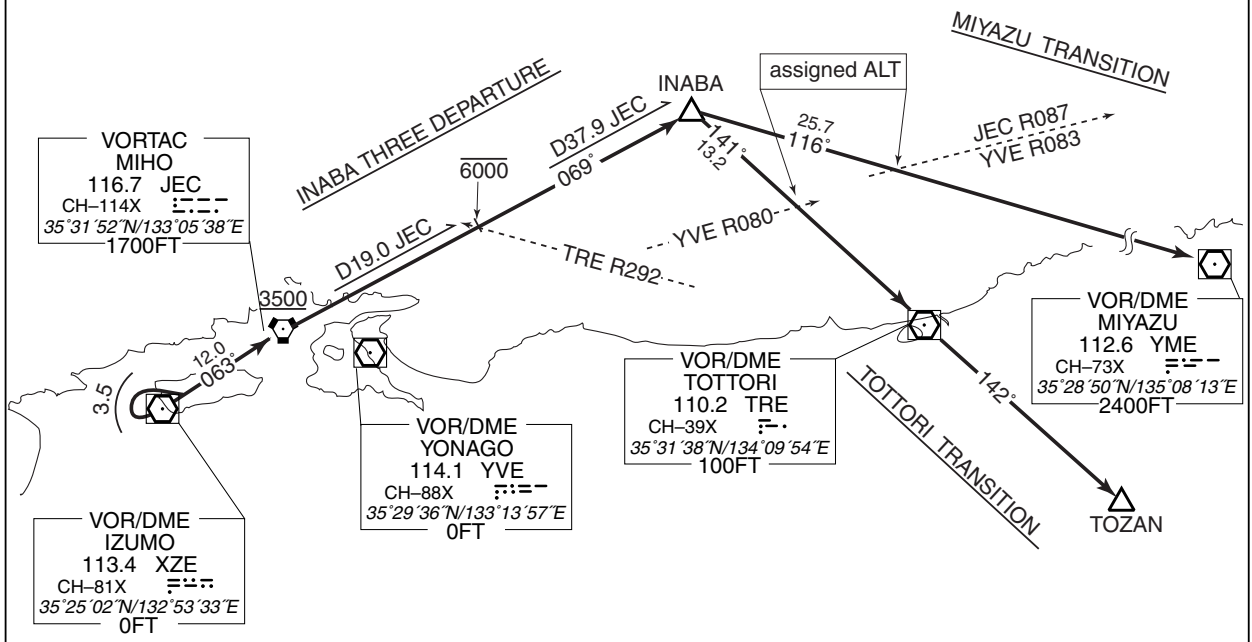
Speed (Knots)	60	90	120	150	180	210
Rate (Feet/Min)	300	450	600	750	900	1050

TOTTORI TRANSITION

From over INABA, turn right and proceed via TRE R321 to TRE VOR/DME, via TRE R142 to TOZAN.
 Cross YVE R080 at assigned altitude.

MIYAZU TRANSITION

From over INABA, turn right and proceed via YME R296 to YME VOR/DME.
 Cross YVE R083 (JEC R087) at assigned altitude.



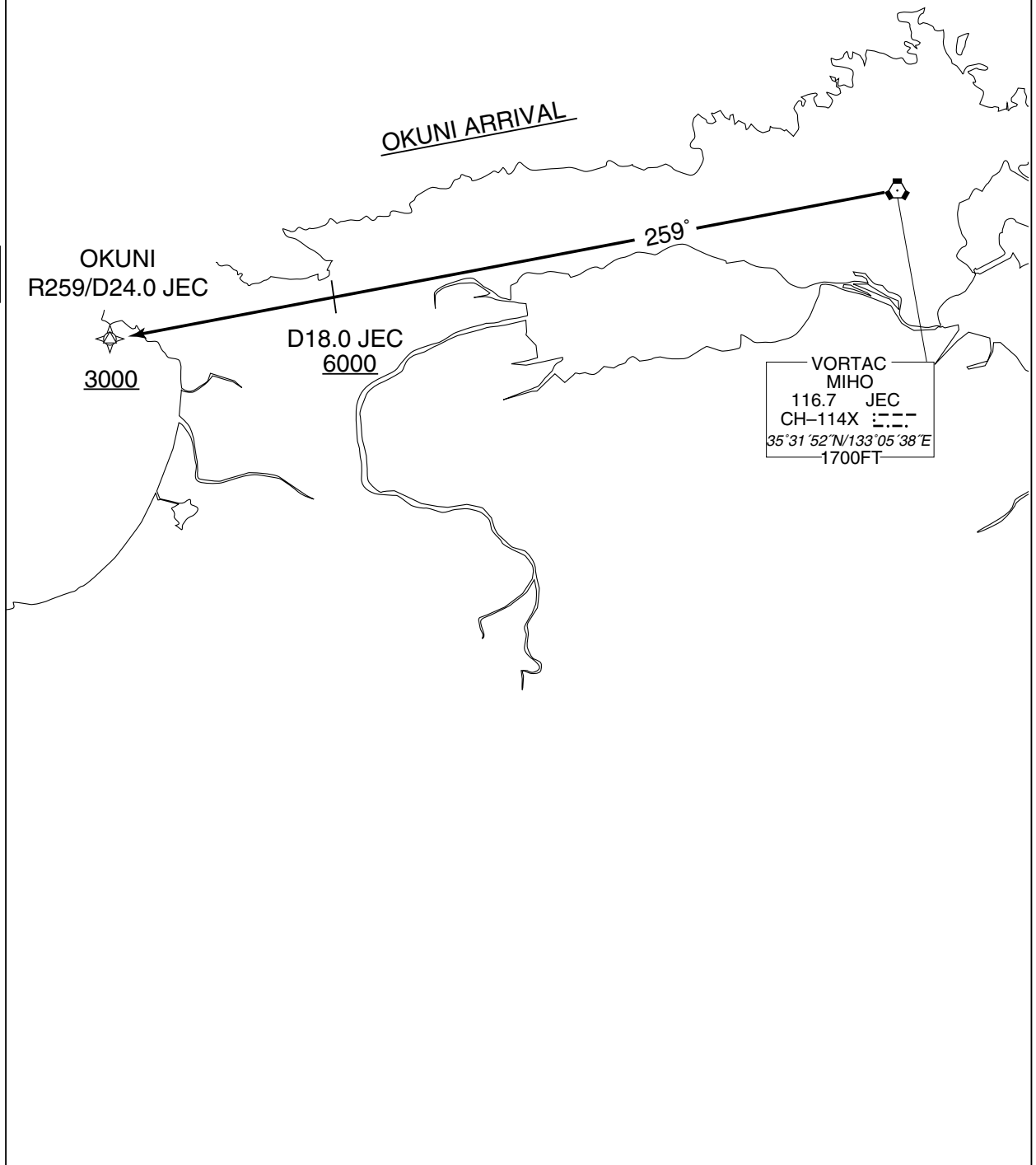
STANDARD ARRIVAL CHART -INSTRUMENT

RJOC / IZUMO

STAR

OKUNI ARRIVAL

From over JEC, proceed via JEC R259 to OKUNI.
Cross JEC R259/18.0DME at or above 6000FT. Cross OKUNI at or above 3000FT.

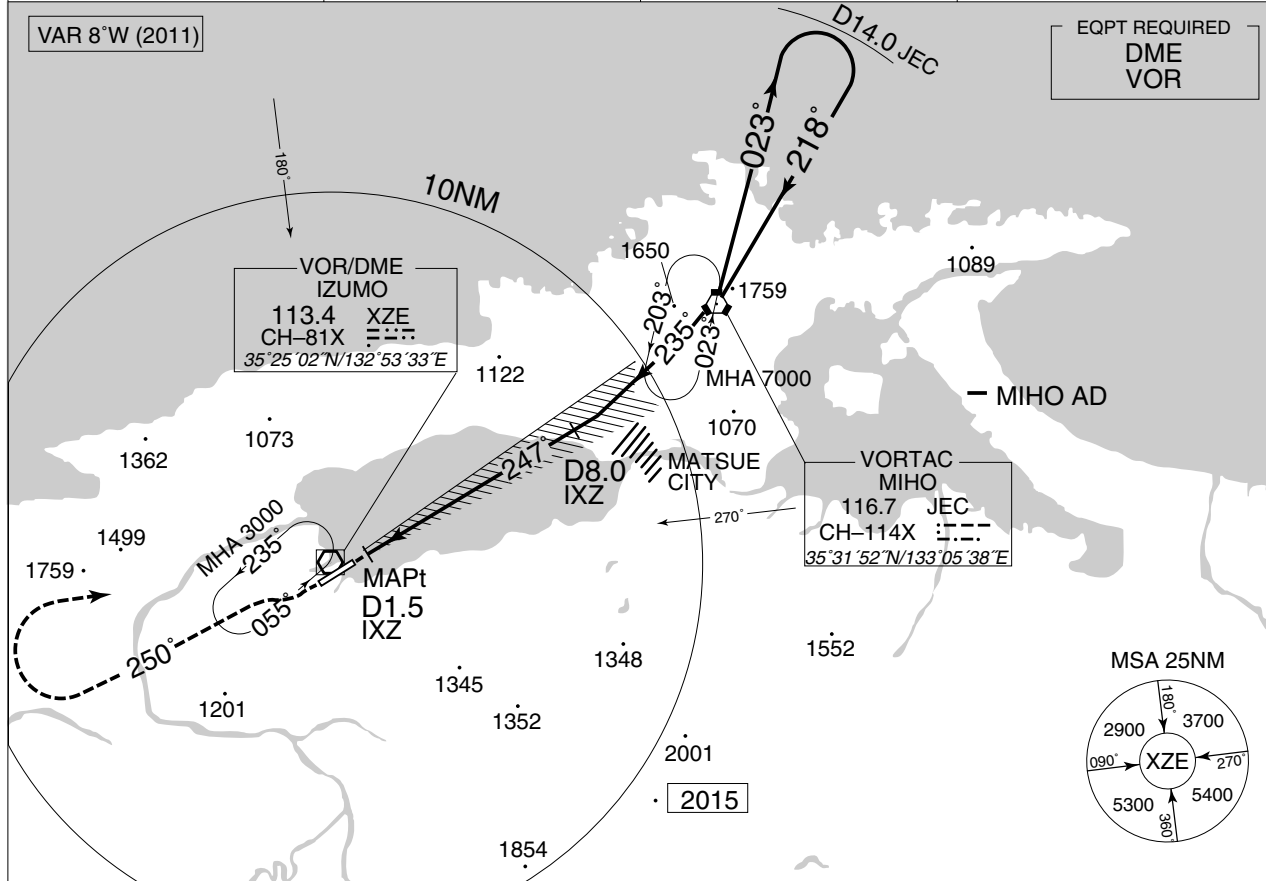


INSTRUMENT APPROACH CHART

RJOC / IZUMO

LOC Z RWY25

MIHO APP 120.1 – 125.4 258.2 – 317.8	LOC 111.7 IXZ LOC-DME CH-54X	IZUMO RADIO 122.7 – 126.2	RADAR AVBL
--	------------------------------------	------------------------------	------------



MISSED APPROACH
Climb on HDG 247° to 1100FT, via XZE R250 to 3000FT, turn right, proceed to XZE VOR/DME within XZE 10.0DME and hold. Contact IZUMO RADIO.

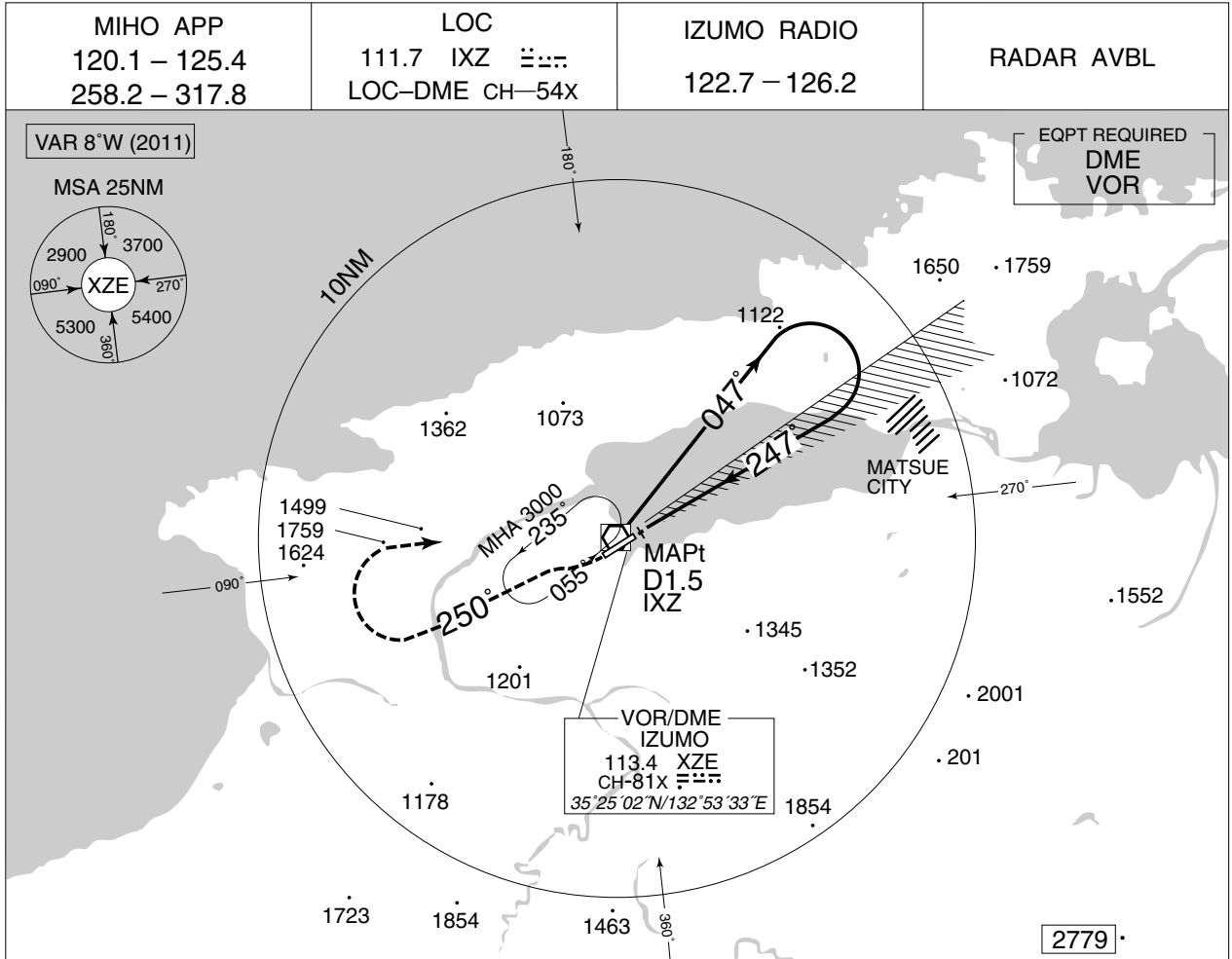
CAT	MINIMA		THR elev. 15	AD elev. 6
	MDA(H)	CMV	CIRCLING	
A	560 (554)	1000	560 (554)	1600
B		1200		2400
C		1600		3200
D				

Circling to NORTH side of RWY only.

INSTRUMENT APPROACH CHART

RJOC / IZUMO

LOC Y RWY25



MISSED APPROACH
Climb on HDG 247° to 1100FT, via XZE R250 to 3000FT, turn right, proceed to XZE VOR/DME within XZE 10.0DME and hold. Contact IZUMO RADIO.

Remain within D10.0 XZE

MINIMA	THR elev. 15	AD elev. 6			
CAT			CIRCLING		
	MDA(H)	CMV	MDA(H)	VIS	
A	560 (554)	1000	560 (554)	1600	
B		1200		2400	
C		1600		560 (554)	3200
D					

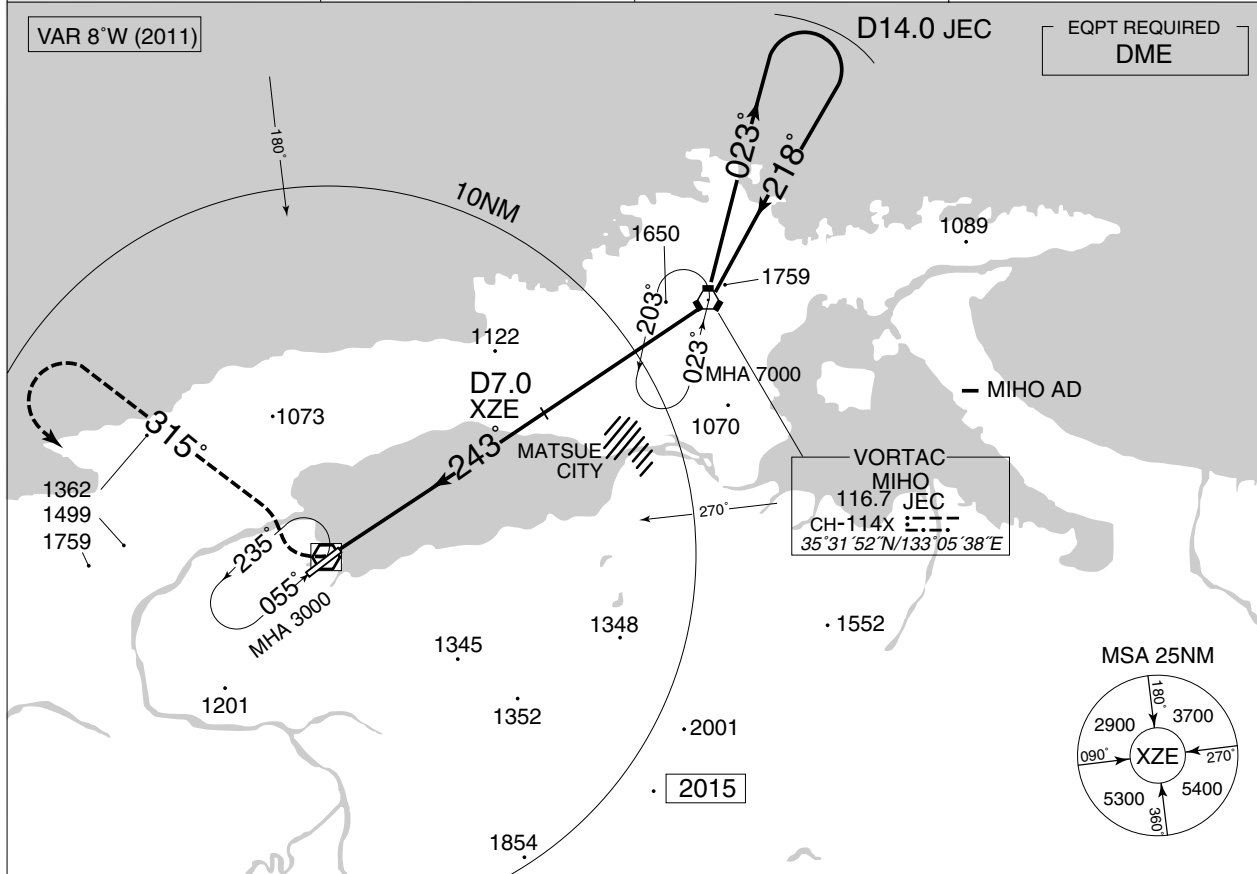
Circling to NORTH side of RWY only.

INSTRUMENT APPROACH CHART

RJOC / IZUMO

VOR A

MIHO APP 120.1 – 125.4 258.2 – 317.8	IZUMO VOR/DME 113.4 XZE CH-81X $\equiv \equiv \equiv$ 35°25'02"N/132°53'33"E	IZUMO RADIO 122.7 – 126.2	RADAR AVAILABLE
--	---	------------------------------	-----------------



MISSED APPROACH
 Turn right, climb via XZE R315 to 3000FT, turn left, proceed to XZE VOR/DME within XZE 10.0DME and hold.
 Contact IZUMO RADIO.

Remain within D14.0 JEC

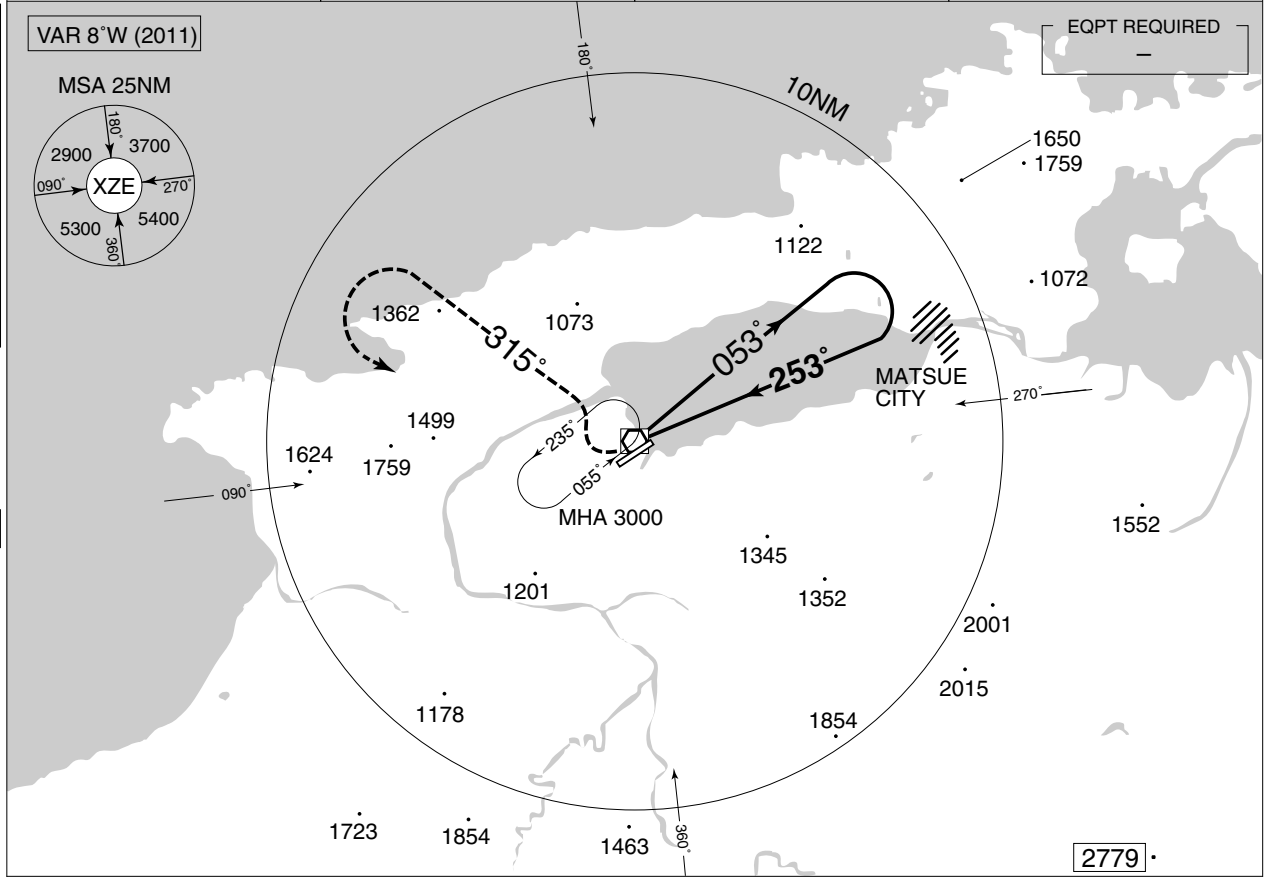
MINIMA		AD elev. 6	
CAT	CIRCLING		VIS
	MDA(H)		
A	960 (954)		1600
B			2400
C			3200
D	1340 (1334)		3200

INSTRUMENT APPROACH CHART

RJOC / IZUMO

VOR B

MIHO APP 120.1 – 125.4 258.2 – 317.8	IZUMO VOR/DME 113.4 XZE CH-81X $\equiv \equiv \equiv$ 35°25'02"N/132°53'33"E	IZUMO RADIO 122.7 – 126.2	RADAR AVAILABLE
--	---	------------------------------	-----------------



MISSED APPROACH
 Turn right, climb via XZE R315 to 3000FT, turn left, proceed to XZE VOR/DME within 10.0NM of XZE VOR/DME and hold. Contact IZUMO RADIO.

Remain within 10.0NM of XZE

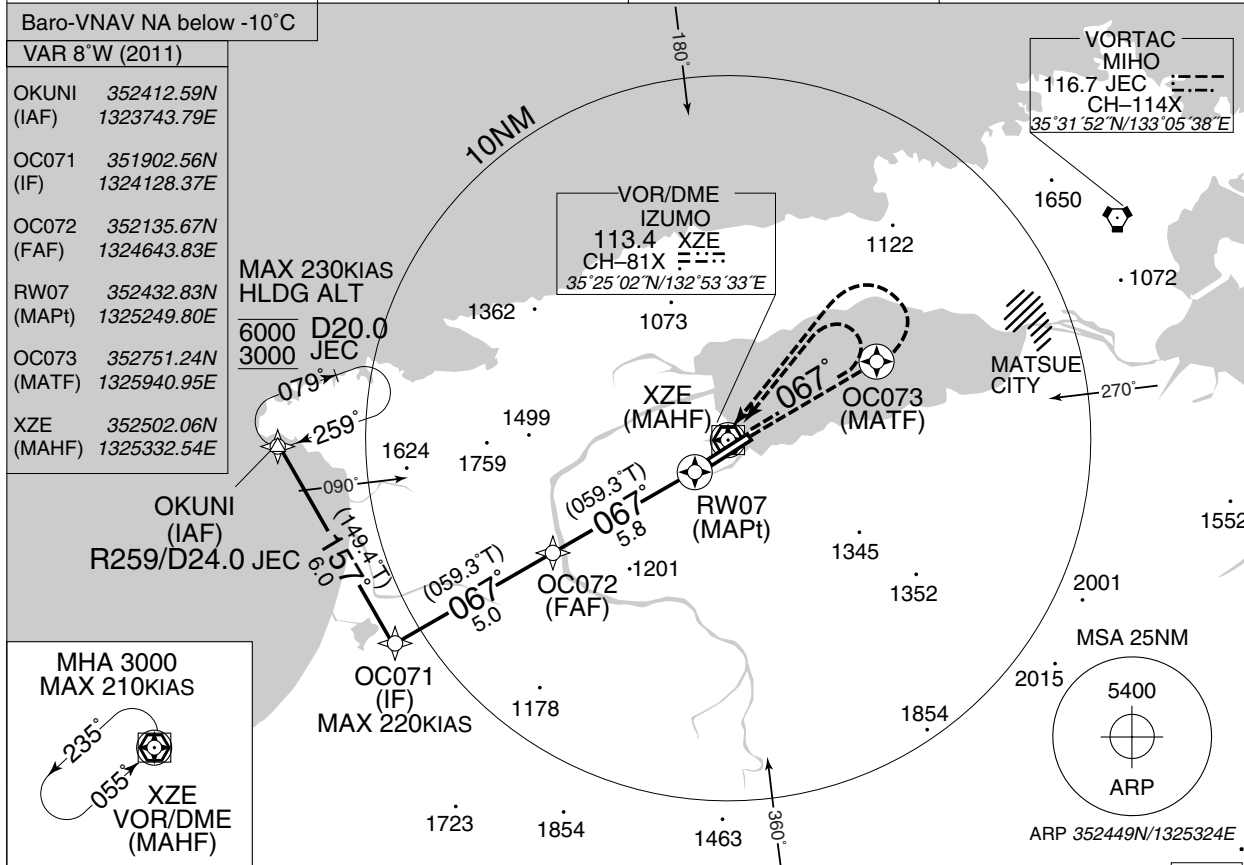
MINIMA		AD elev. 6
CAT	CIRCLING	
	MDA(H)	VIS
A	940 (934)	1600
B		2400
C		3200
D		
Circling to NORTH side of RWY only		

INSTRUMENT APPROACH CHART

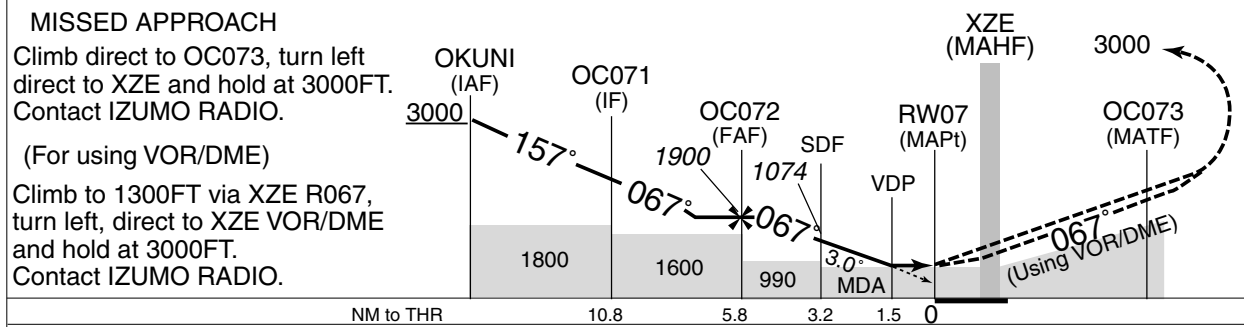
RJOC / IZUMO

RNAV(GNSS) RWY07

MIHO APP 120.1 – 125.4 258.2 – 317.8	1. DME/DME RNP0.3 not authorized. 2. RNP0.3 required. 3. GNSS required.	IZUMO RADIO 122.7 – 126.2	RADAR AVBL
--	---	------------------------------	------------



NM to Next Fix	FAF	5	4	3	2	1	MAPt	2779
ALT (3.0° APCH Path)	1900	1647	1329	1010	692	-	-	

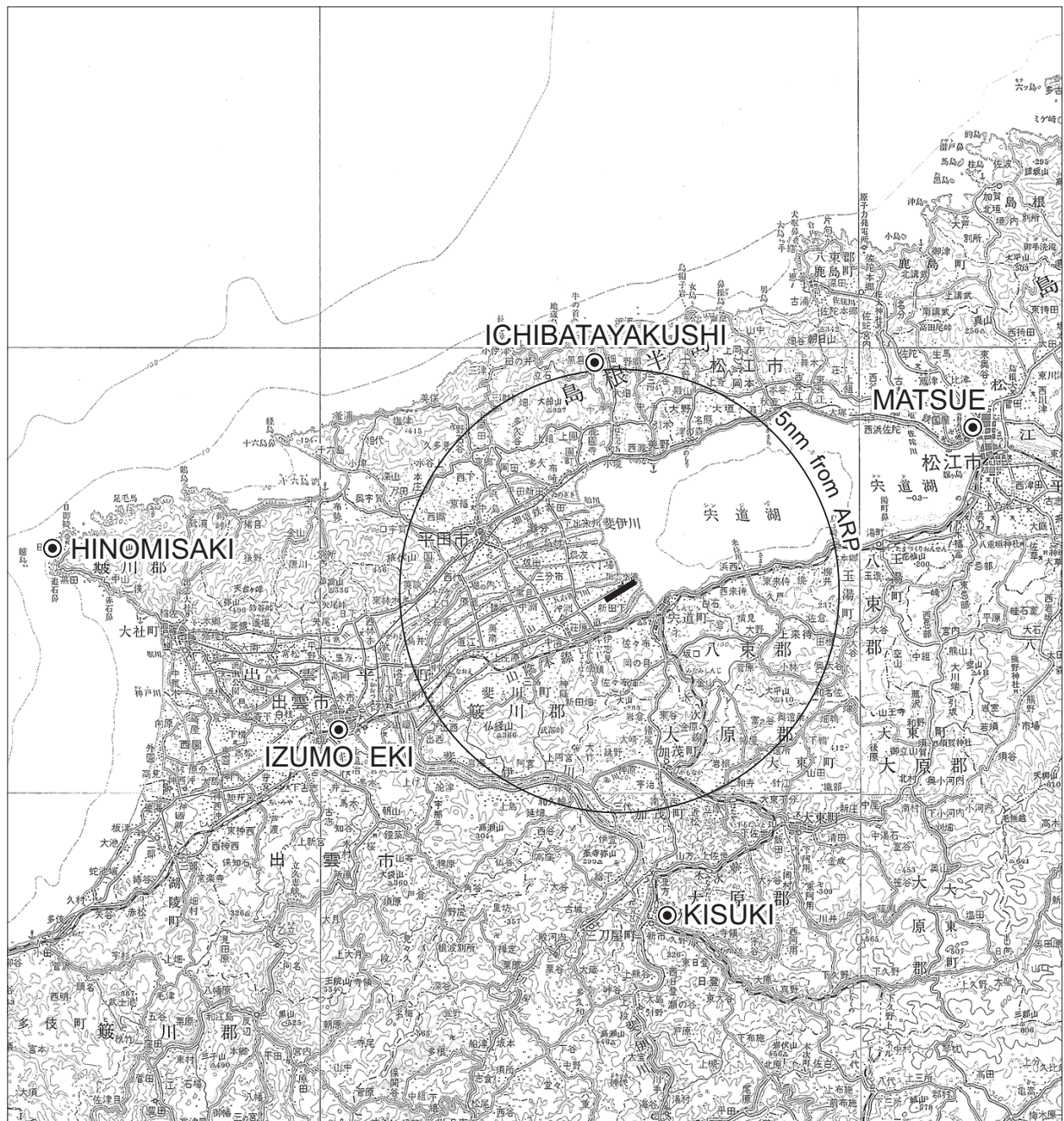


MINIMA		THR elev. 6		AD elev. 6		
CAT	LNAV/VNAV		LNAV		CIRCLING	
	DA(H)	CMV	MDA(H)	CMV	MDA(H)	VIS
A	510 (504)	1500	510 (504)	1500	510 (504)	1600
B				2000		
C		2000		2000	560 (554)	2400
D					3200	

Circling to NORTH side of RWY only

RJOC / IZUMO

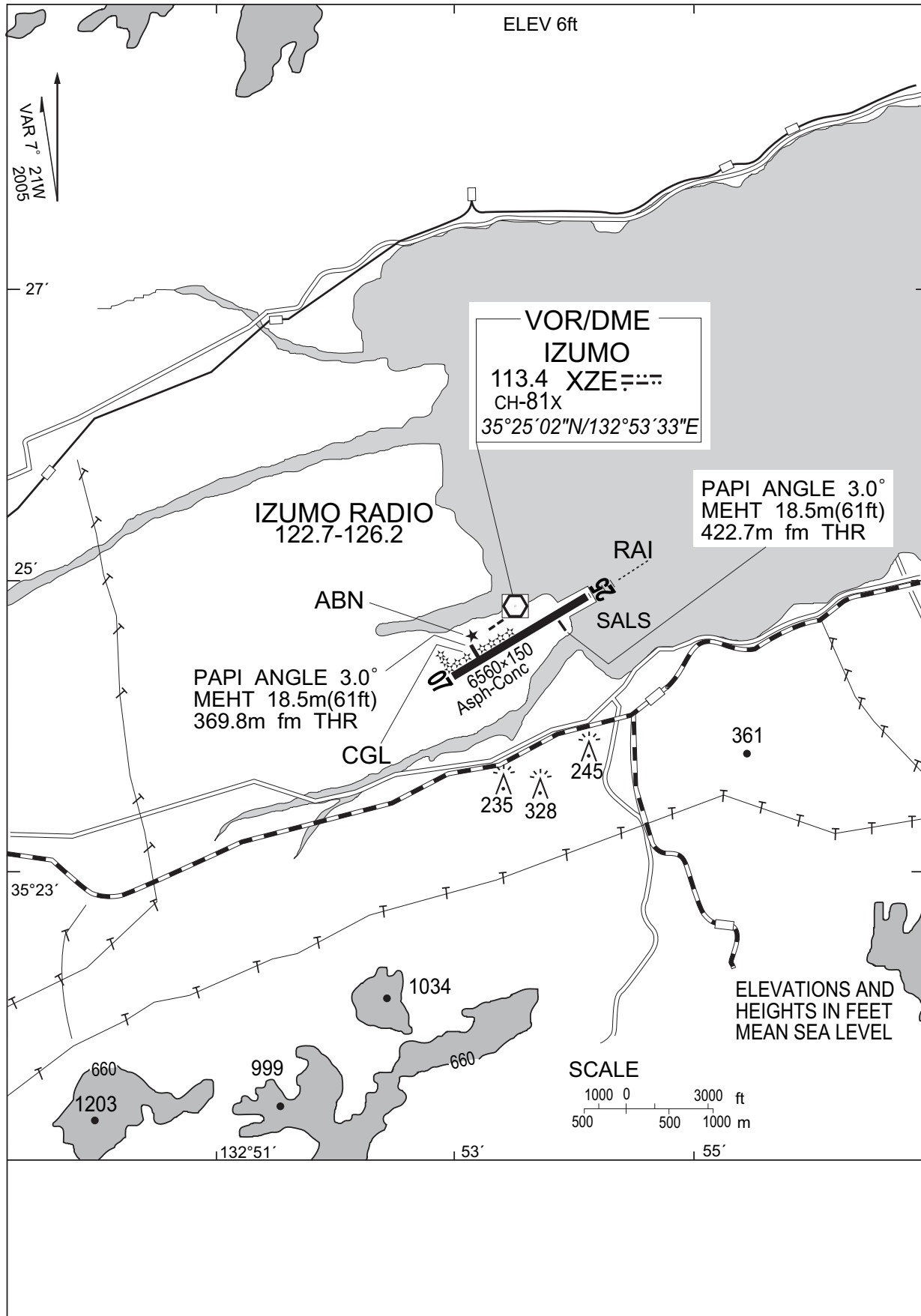
Visual REP



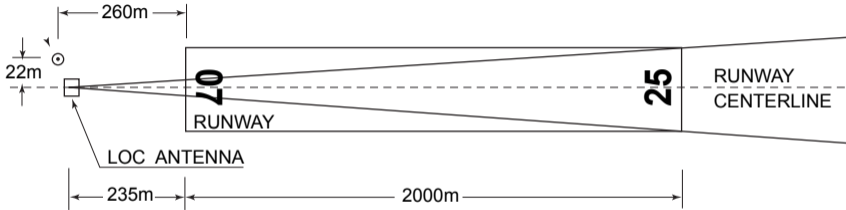
Call sign	BRG / DIST from ARP	Remarks
松江 Matsue	072°/9.1NM	松江城 Castle
出雲市駅 Izumoshi eki	251°/7.4NM	JR Station
一畑薬師 Ichihatayakushi	360°/5.3NM	寺 Temple
木次 Kisuki	181°/7.8NM	電々公社アンテナ Antenna
日御碕 Hinomisaki	280°/12.5NM	灯台 Lighthouse

RJOC / IZUMO

LDG CHART



LOC-DME ANTENNA



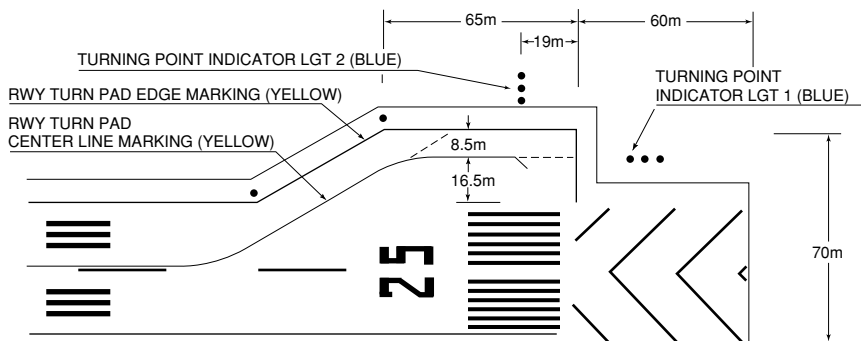
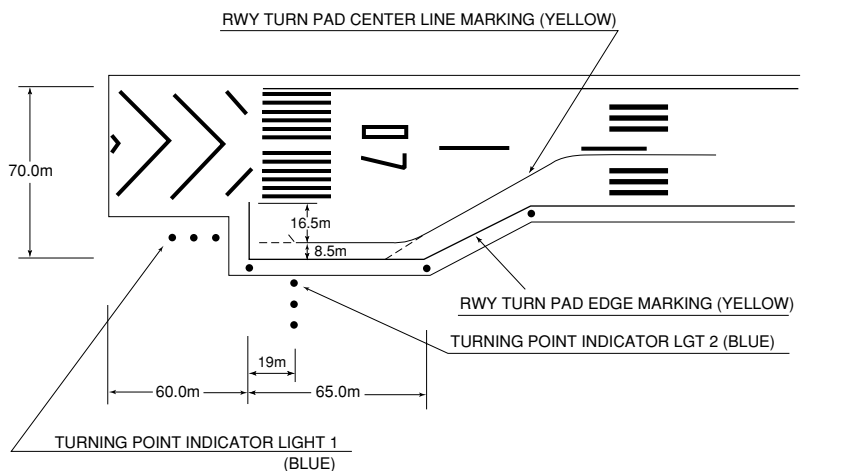
- REMARKS :
1. LOC beam BRG(MAG) 247°
 2. ELEV of LOC-DME $5.7\text{m}(19\text{ft})$

A-300型機用の滑走路180°転回要領

1. 滑走路中心線からターニングパッド中心線標識に従って進行する。
2. 転回灯1が一直線に見えるように進行し、転回灯2が一直線に見えた時転回を開始する。
転回時はMAX STEERING ANGLEを使用する。

180° turn on runway of A-300 aircraft

1. Proceed along the RWY Turn Pad Center Line Marking.
2. Proceed along the RWY Turn Pad Center Line Marking to see the Turning Point Indicator Light 1 on a straight line, then commence turn at the spot where you (pilot) can see the Turning Point Indicator Light 2 on a straight line at an angle of 9 o'clock. When turning, take MAX STEERING ANGLE.



LONGITUDINAL PROFILE OF RUNWAY

RWY07

RWY25

