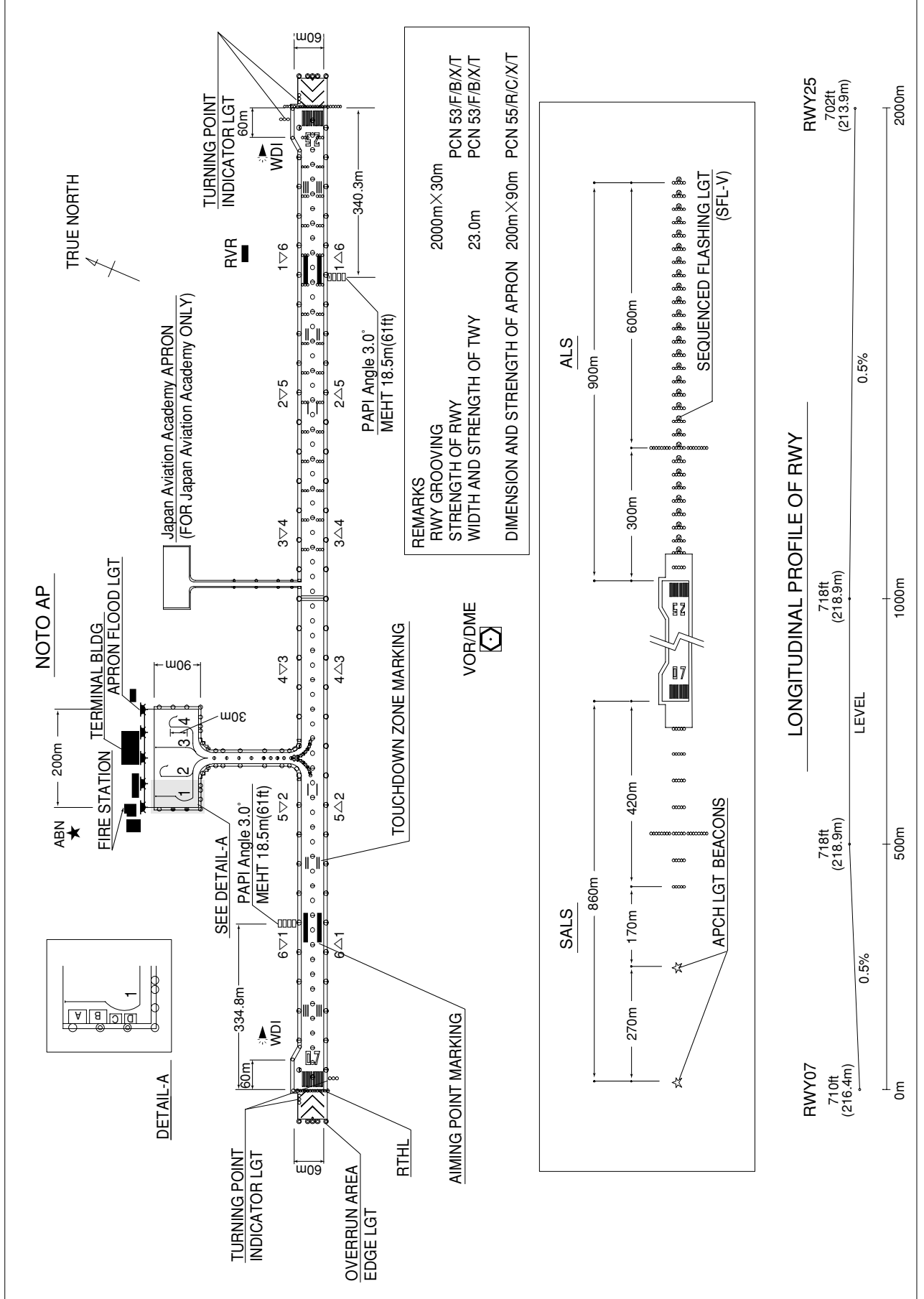


RJNW / NOTO

AD CHART



STANDARD DEPARTURE CHART -INSTRUMENT

RJNW / NOTO

SID

NOTO REVERSAL ONE DEPARTURE

RWY07 : Turn right, climb via NTE R-076 to 3,000FT or above, turn left,....

RWY25 : Climb via NTE R-260 to 3,000FT or above, turn right,....

.... proceed to NTE VOR/DME within NTE 10DME, then via NTE R-172 to URUSI.

Cross URUSI at or above 8,000FT.

Note : When take off RWY07, following climb gradient should be maintained until 1,200FT.

Speed (Knots)	60	90	120	150	180	210
Rate (Feet/Min)	300	450	600	750	900	1050

HISUI ONE DEPARTURE

RWY07 : Turn right,....

RWY25 : Climb RWY HDG until 1NM from RWY end/NTE 1.5DME, turn left,...

...climb via NTE R-076 to HISUI.

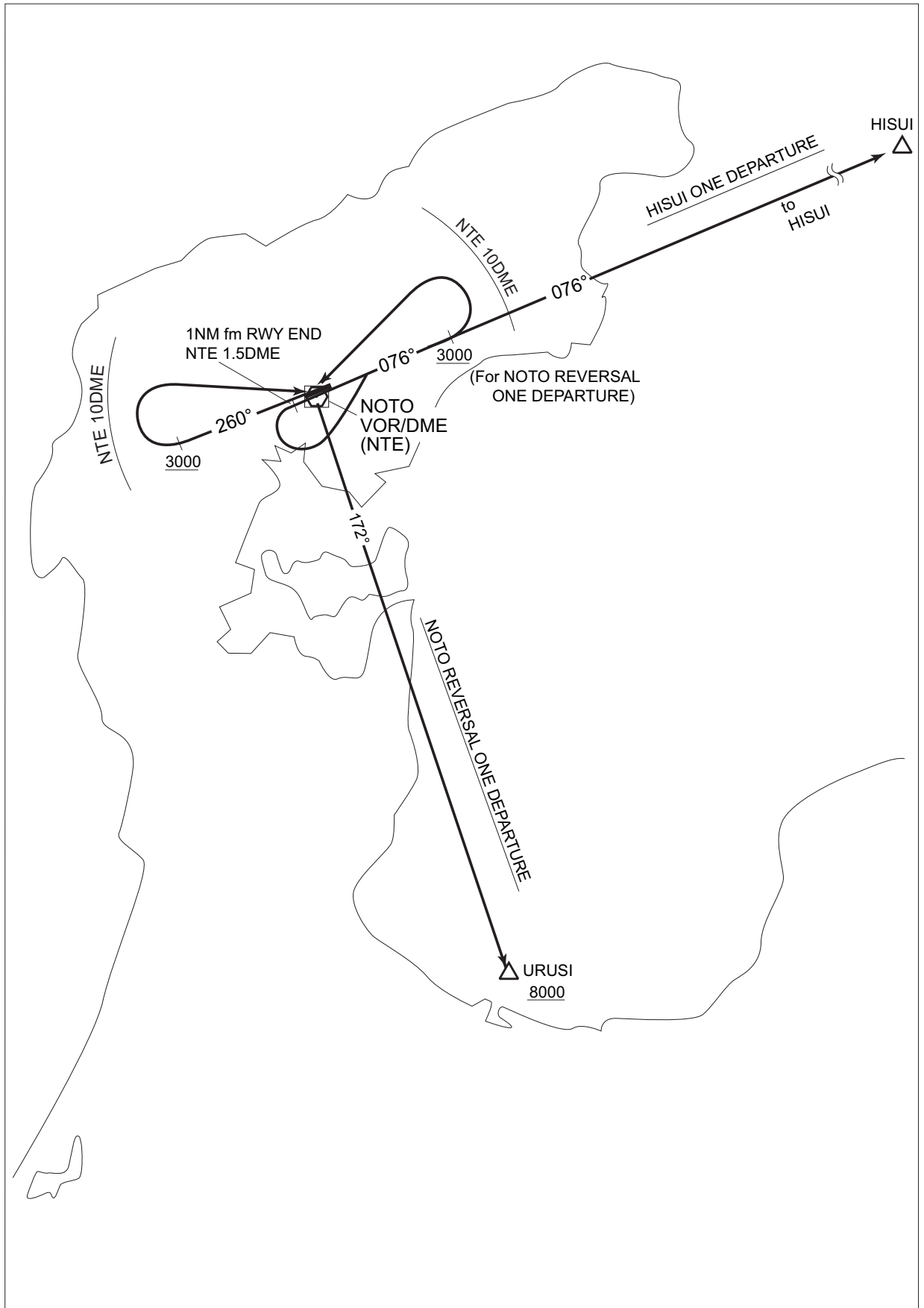
Note : When take off RWY07, following climb gradient should be maintained until 1,200FT.

Speed (Knots)	60	90	120	150	180	210
Rate (Feet/Min)	300	450	600	750	900	1050

STANDARD DEPARTURE CHART -INSTRUMENT

RJNW / NOTO

SID



STANDARD ARRIVAL CHART -INSTRUMENT

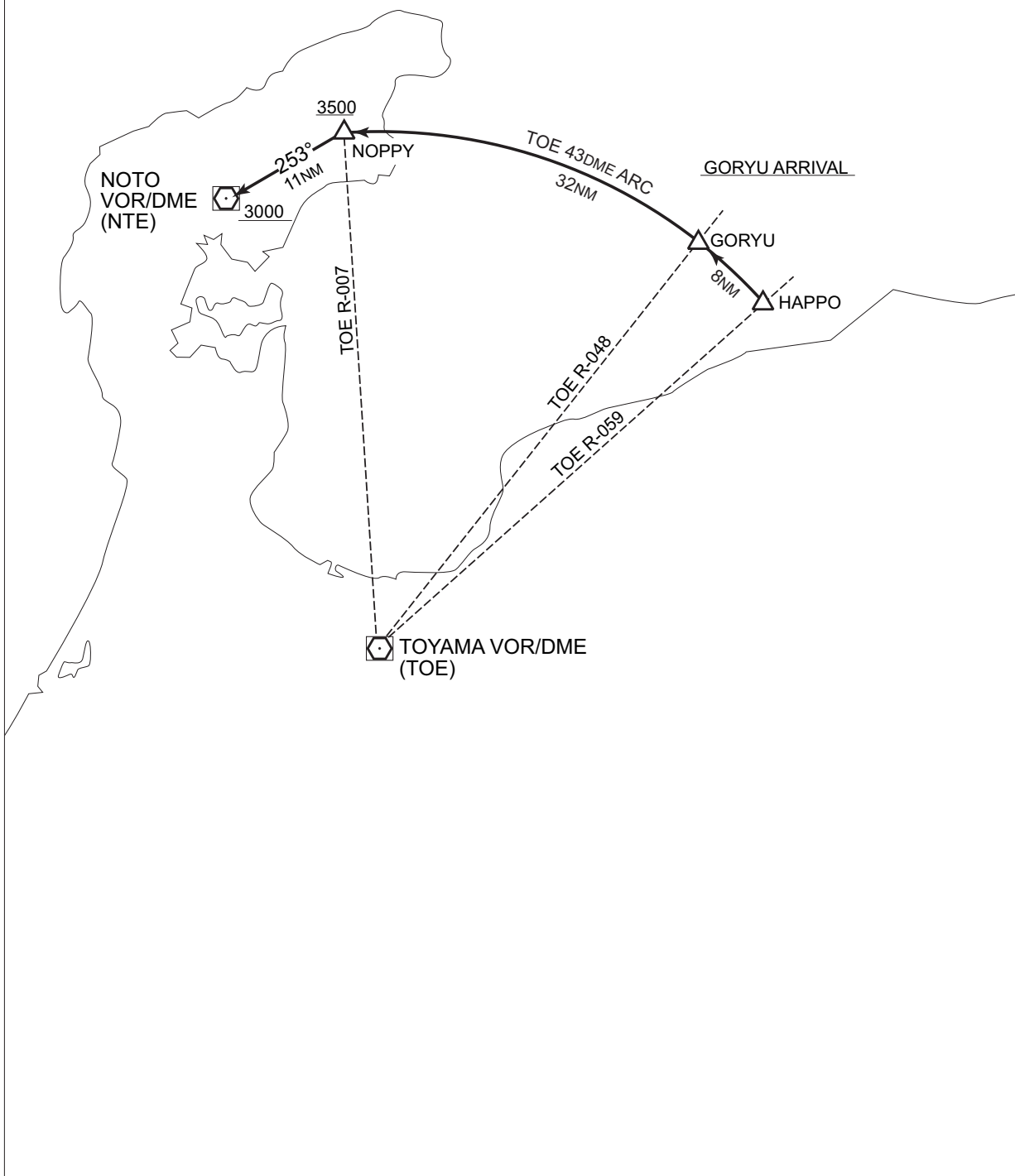
RJNW / NOTO

STAR

GORYU ARRIVAL

From over HAPPO or GORYU, proceed via TOE 43DME counterclockwise ARC to NOPPY or to intercept and proceed via NTE R-073 to NTE VOR/DME.

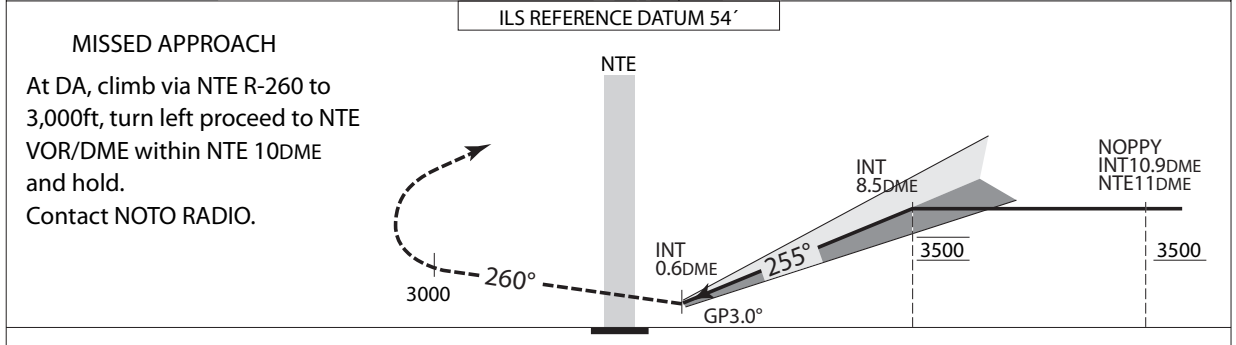
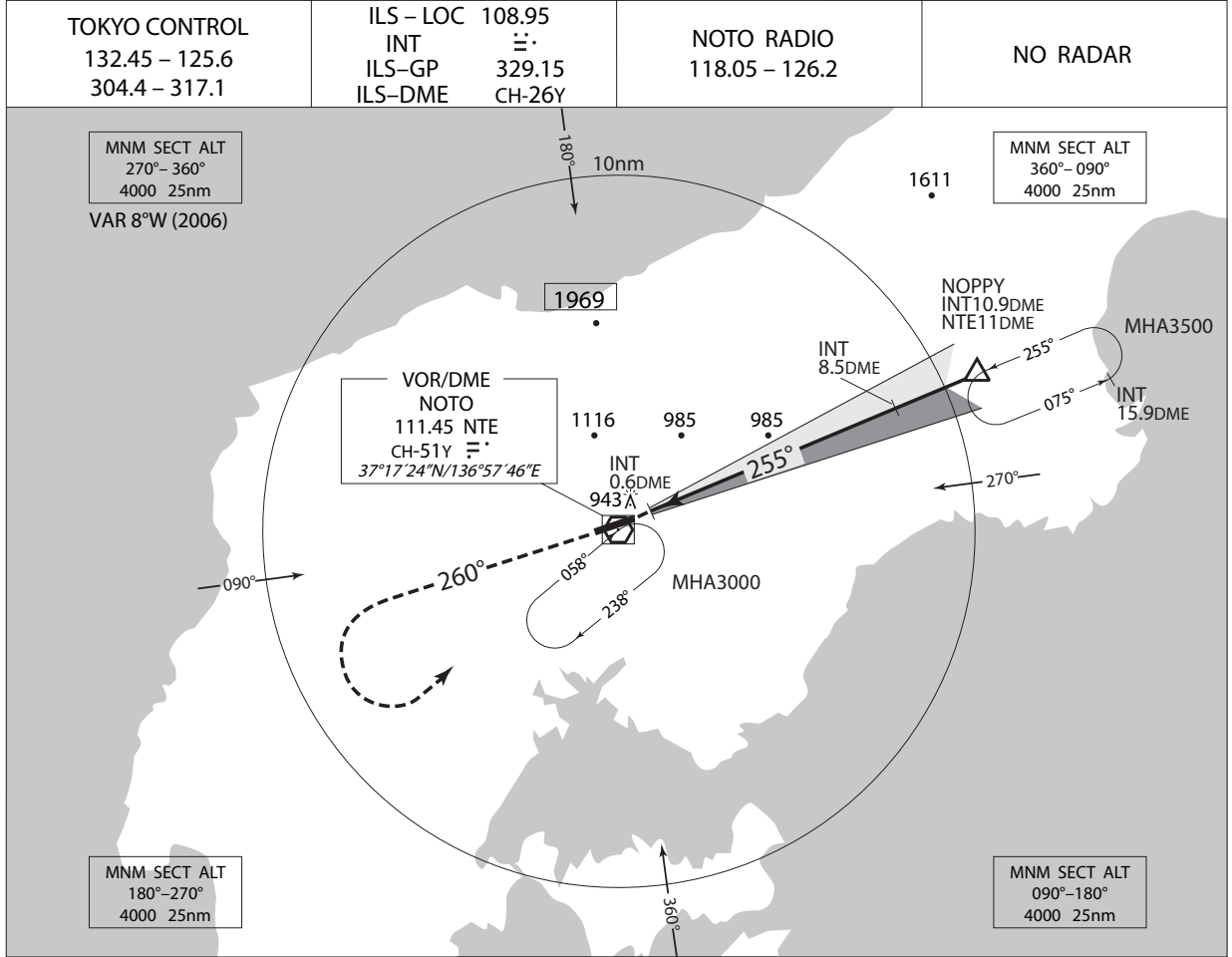
Cross NOPPY at or above 3,500FT, cross NTE VOR/DME at or above 3,000FT.



INSTRUMENT APPROACH CHART

RJNW / NOTO

ILS RWY25

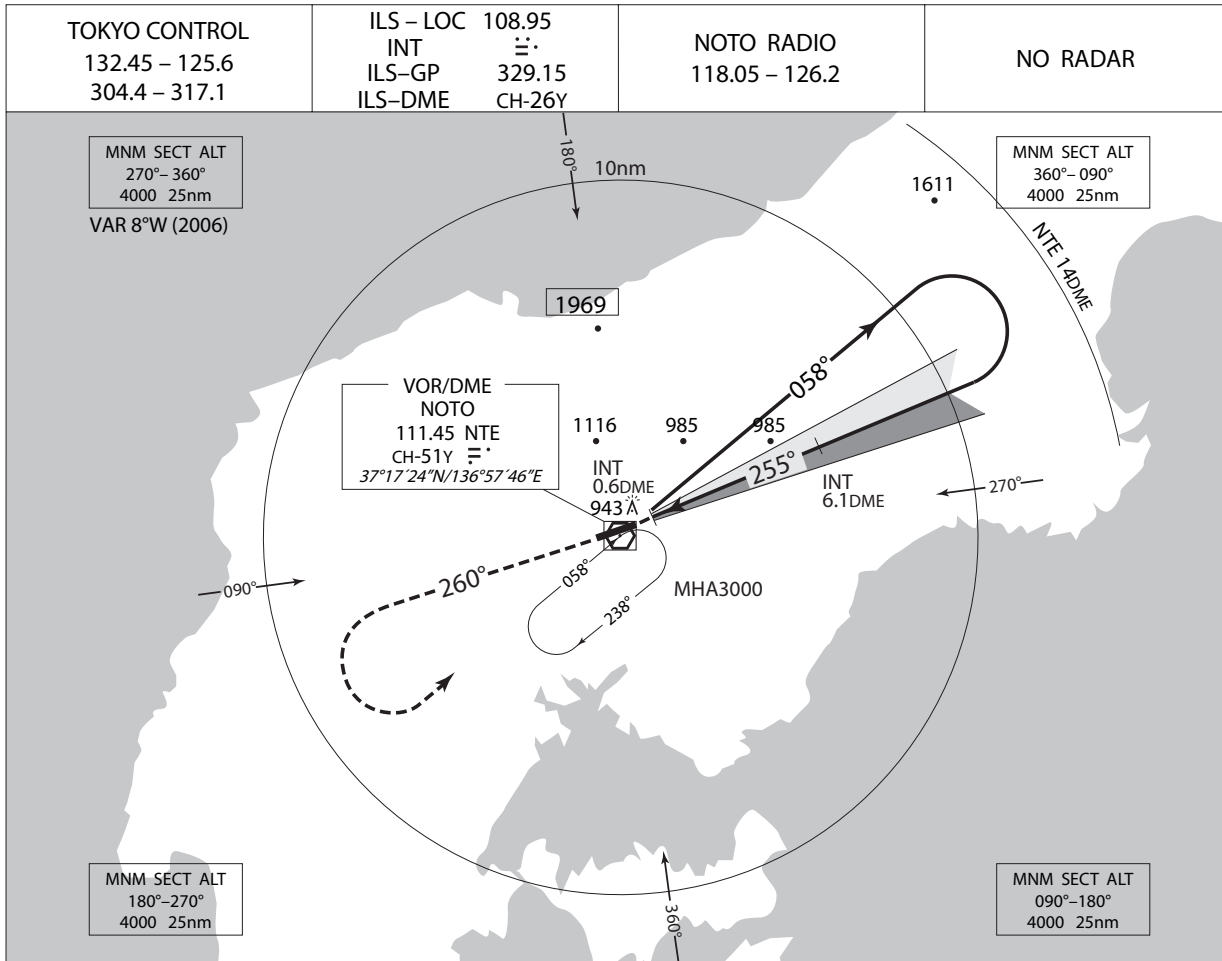


MINIMA		THR elev. 702		AD elev. 718		
CAT	CAT I		LOC		CIRCLING	
	DA(H)	RVR/CMV	MDA(H)	RVR/CMV	MDA(H)	VIS
A	917 (215)	600	1300 (598)	1000	1300 (582)	1600
B				1200		
C				1600	1420 (702)	3200
D				1600		

INSTRUMENT APPROACH CHART

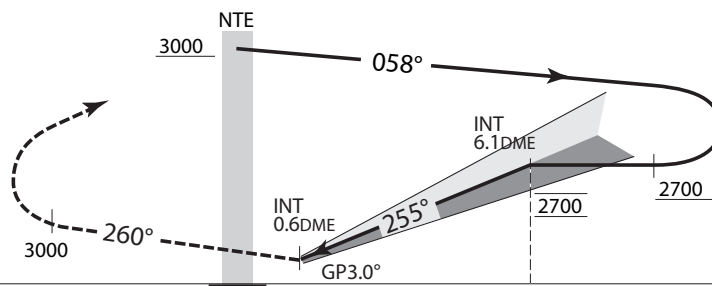
RJNW / NOTO

VOR/DME/ILS RWY25



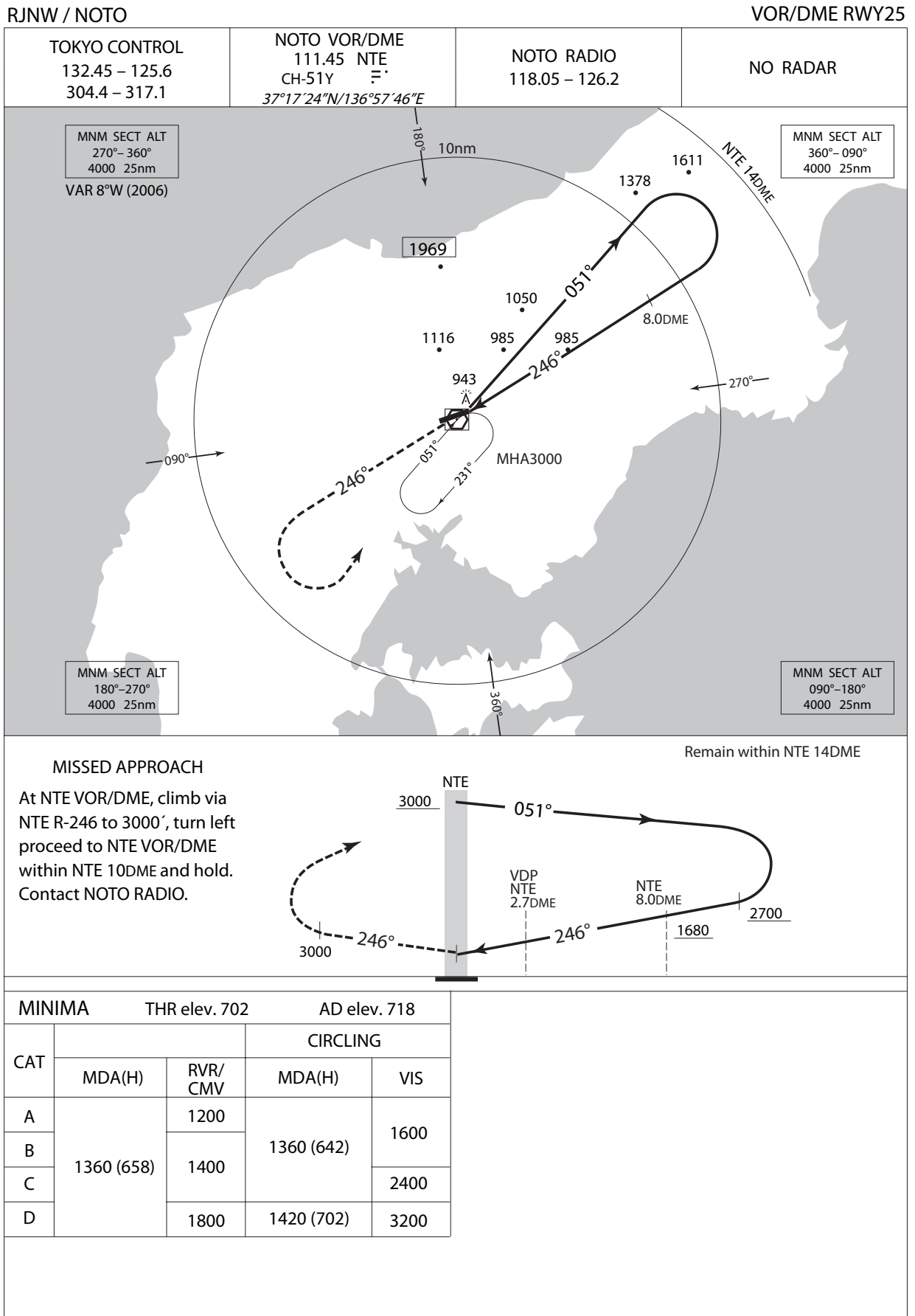
MISSED APPROACH

At DA, climb via NTE R-260 to 3,000ft, turn left proceed to NTE VOR/DME within NTE 10DME and hold.
Contact NOTO RADIO.



MINIMA		THR elev. 702		AD elev. 718				
CAT	CAT I		LOC		CIRCLING			
	DA(H)	RVR/CMV	MDA(H)	RVR/CMV	MDA(H)	VIS		
A	917 (215)	600	1300 (598)	1000	1300 (582)	1600		
B				1200				
C				1600			1420 (702)	2400
D				1600			1420 (702)	3200

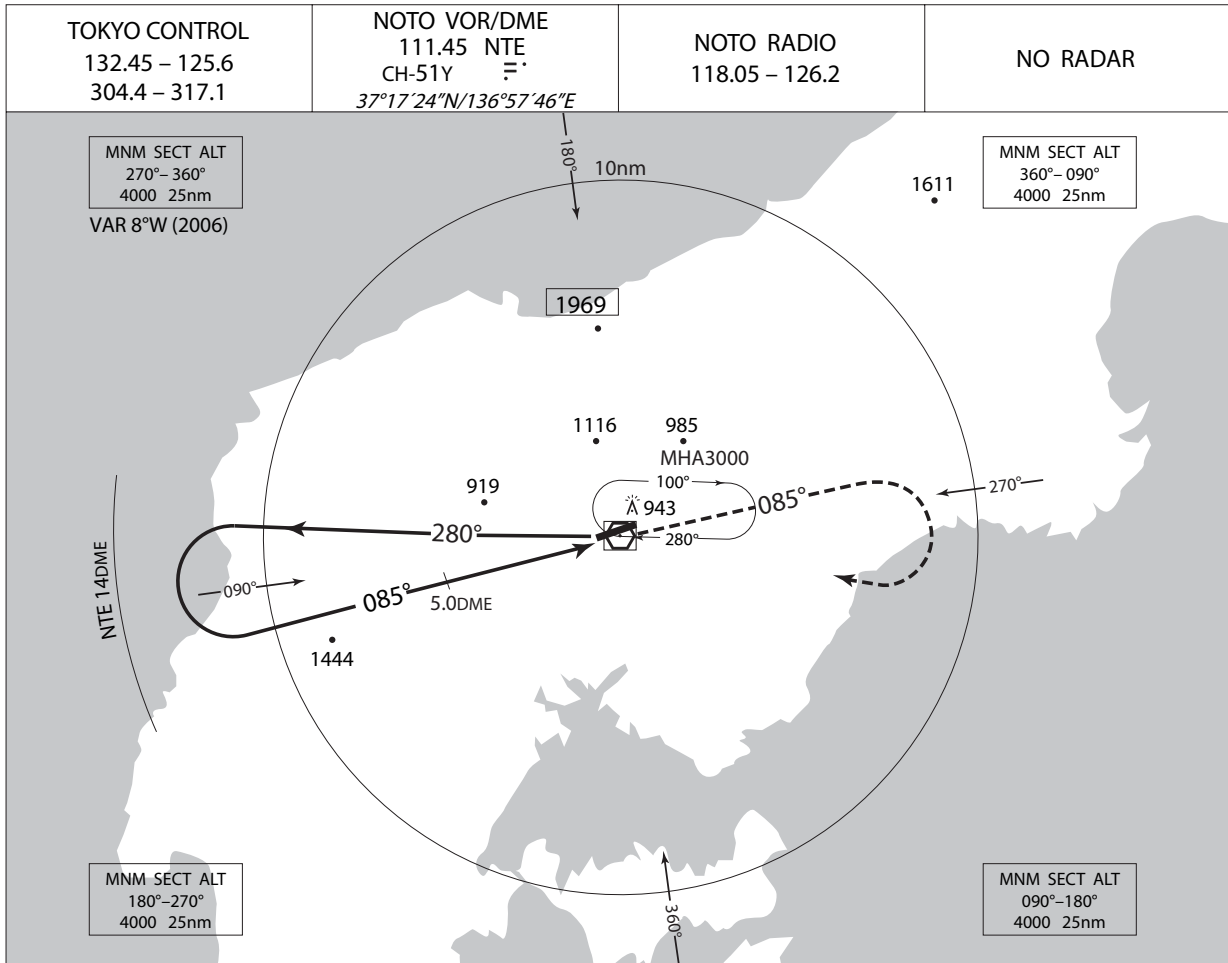
INSTRUMENT APPROACH CHART



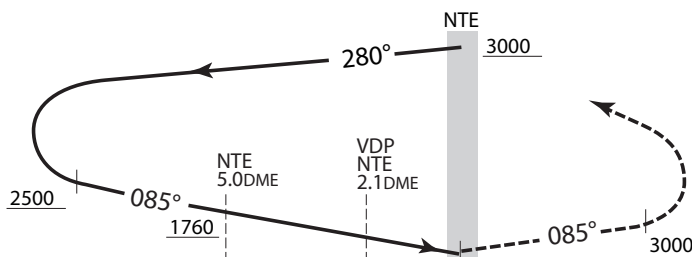
INSTRUMENT APPROACH CHART

RJNW / NOTO

VOR/DME RWY07



Remain within NTE 14DME



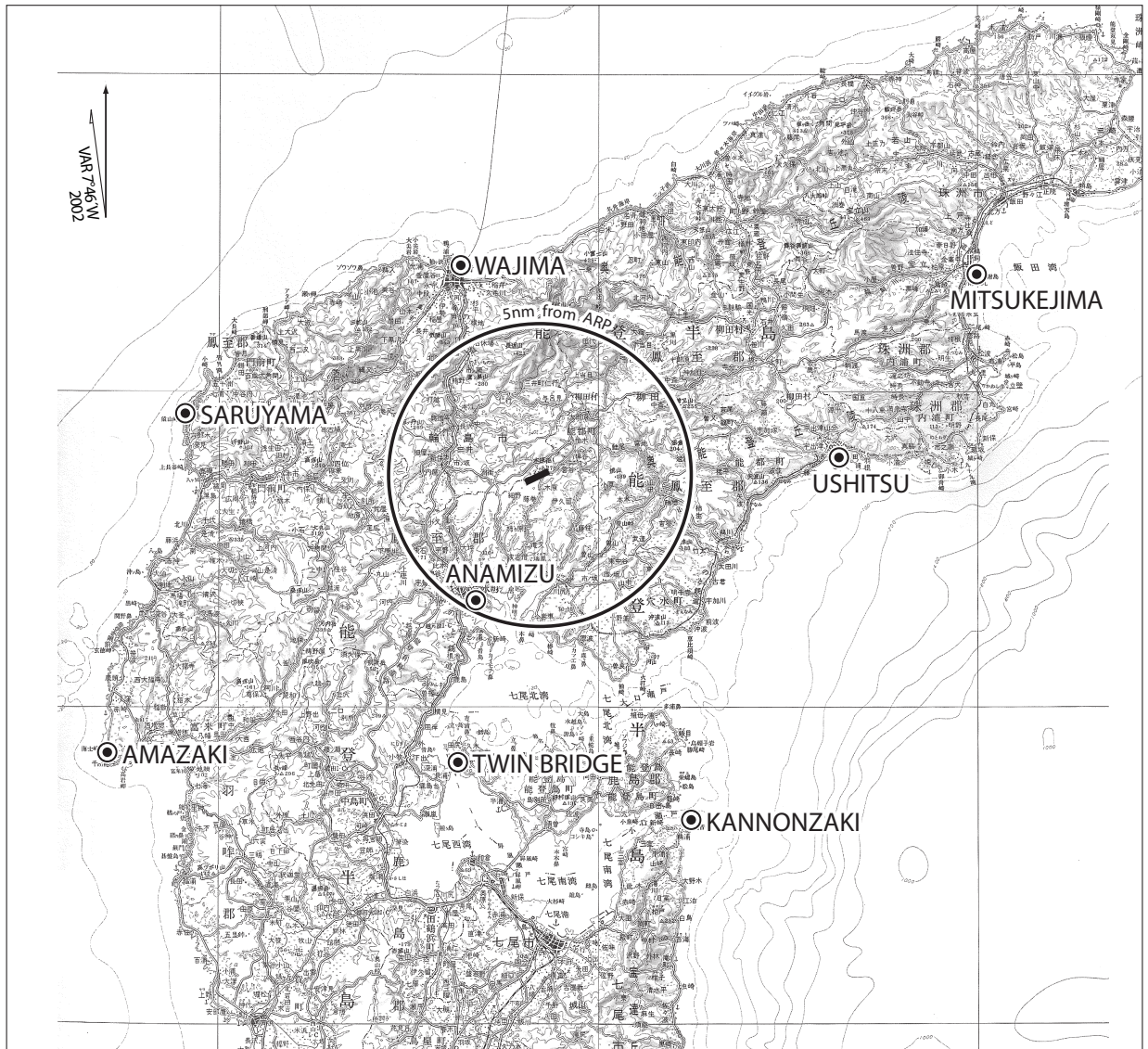
MISSED APPROACH

At NTE VOR/DME, climb via NTE R-085 to 3000', turn right proceed to NTE VOR/DME within NTE 10DME and hold. Contact NOTO RADIO.

MINIMA	THR elev. 710	AD elev. 718		
CAT	CIRCLING			
	MDA(H)	CMV	MDA(H)	VIS
A	1220 (510)	1400	1260 (542)	1600
B		1500		
C		1600	1300 (582)	2400
D		1800	1420 (702)	3200

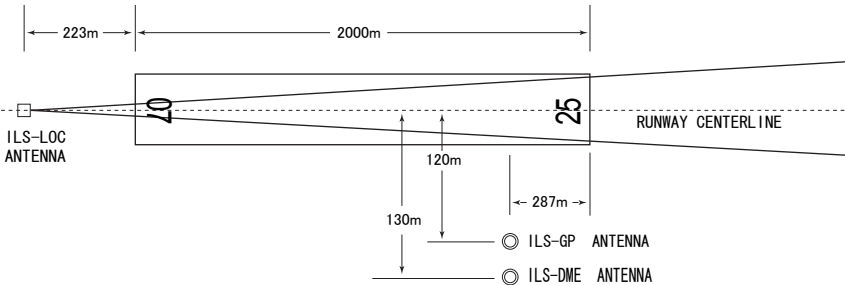
RJNW / NOTO

Visual REP



Call sign	BRG / DIST from ARP	Remarks
見附島 Mitsukejima	073°/14.9NM	島 Island
宇出津 Ushitsu	092°/ 9.1NM	港 Harbor
観音崎 Kannonzaki	167°/11.8NM	岬 Cape
ツインブリッジ TwinBridge	206°/ 9.8NM	橋 Bridge
穴水 Anamizu	218°/ 4.6NM	港 Harbor
海士崎 Amazaki	245°/16.5NM	岬 Cape
猿山 Saruyama	294°/14.2NM	岬 Cape
輪島 Wajima	343°/ 7.0NM	港 Harbor

INTENTIONALLY LEFT BLANK



- REMARKS :
- | | |
|-------------------------|----------------|
| 1. LOC beam BRG (MAG) | 255° |
| 2. HGT of ILS Ref datum | 16.5m (54ft) |
| 3. GP Angle | 3.0° |
| 4. ELEV of ILS-DME | 219.8m (721ft) |

