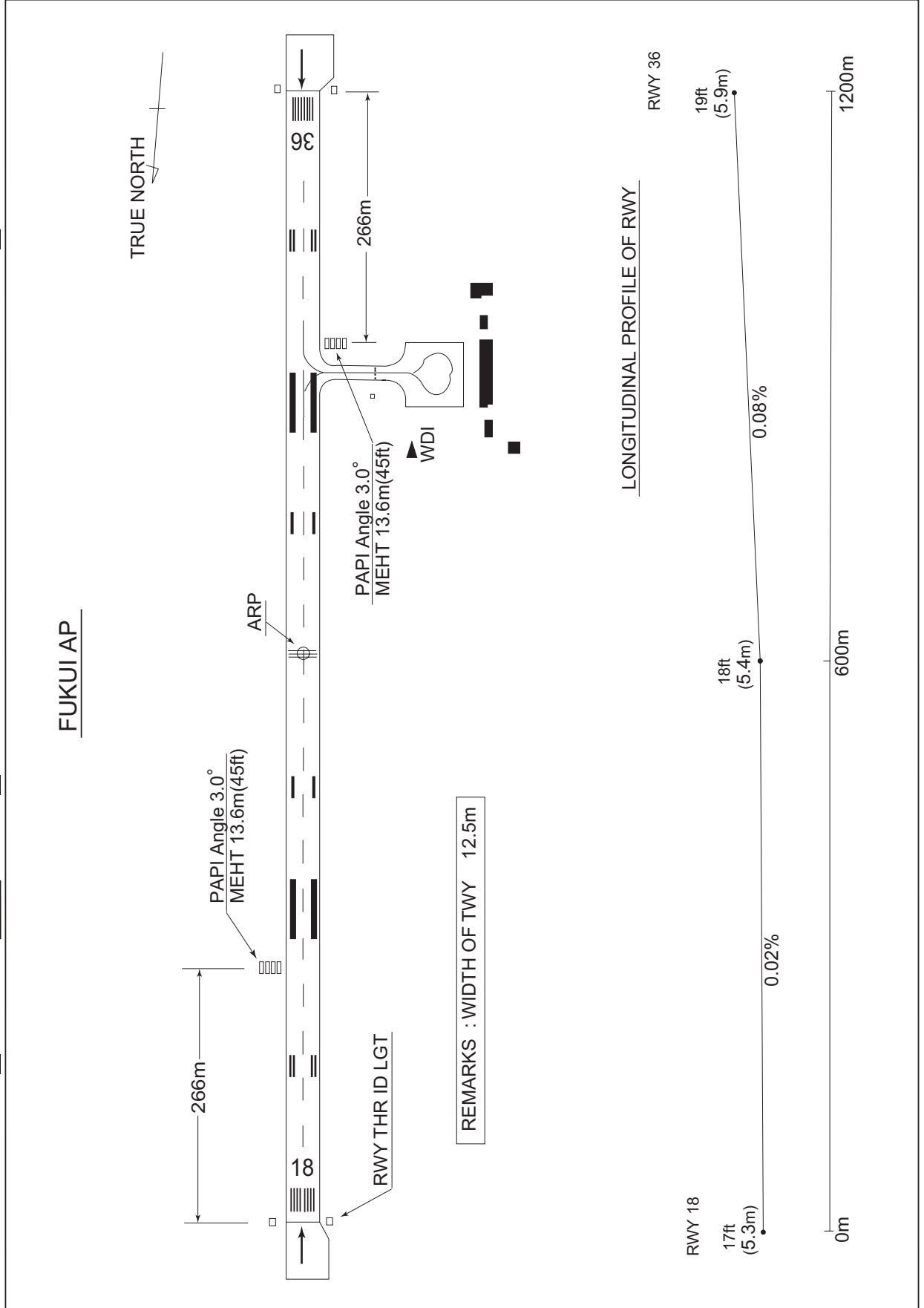


RJNF / FUKUI

AD CHART



STANDARD DEPARTURE CHART -INSTRUMENT

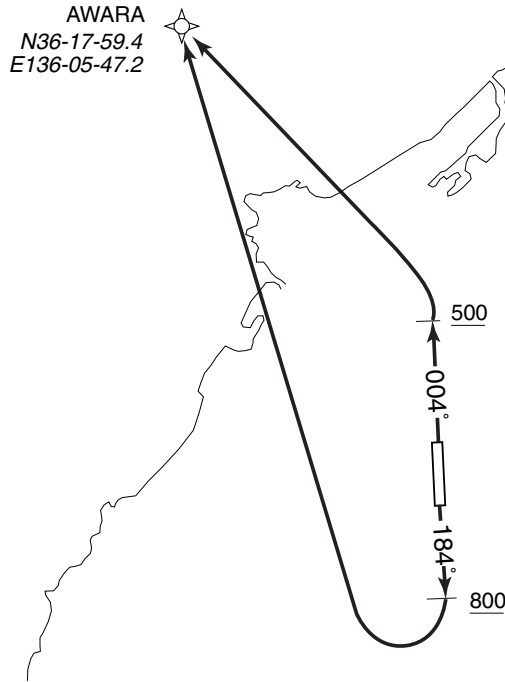
RJNF / FUKUI

➔ RNAV SID

AWARA ONE RNAV DEPARTURE

Basic RNP1

VAR 8° W(2010)



Note: RWY18: 5.0% climb gradient required up to 1100FT.

AWARA ONE RNAV DEPARTURE

RWY18: Climb on HDG184° at or above 800FT, turn right direct to AWARA.
 RWY36: Climb on HDG004° at or above 500FT, turn left direct to AWARA.
 Note: RWY18: 5.0% climb gradient required up to 1100FT.

RWY18

Rcmd. Path Terminator	Fix ID (Waypoint Name)	Fly Over	Distance (NM)	MAG Track (TRUE Track)	Turn Direction	Altitude (FT)	Speed Limit (KIAS)	Vertical Angle	Navigation Performance
VA	—	—	—	184° (175.9°)	—	+800	—	—	Basic RNP1
DF	AWARA	—	—	—	R	—	—	—	Basic RNP1

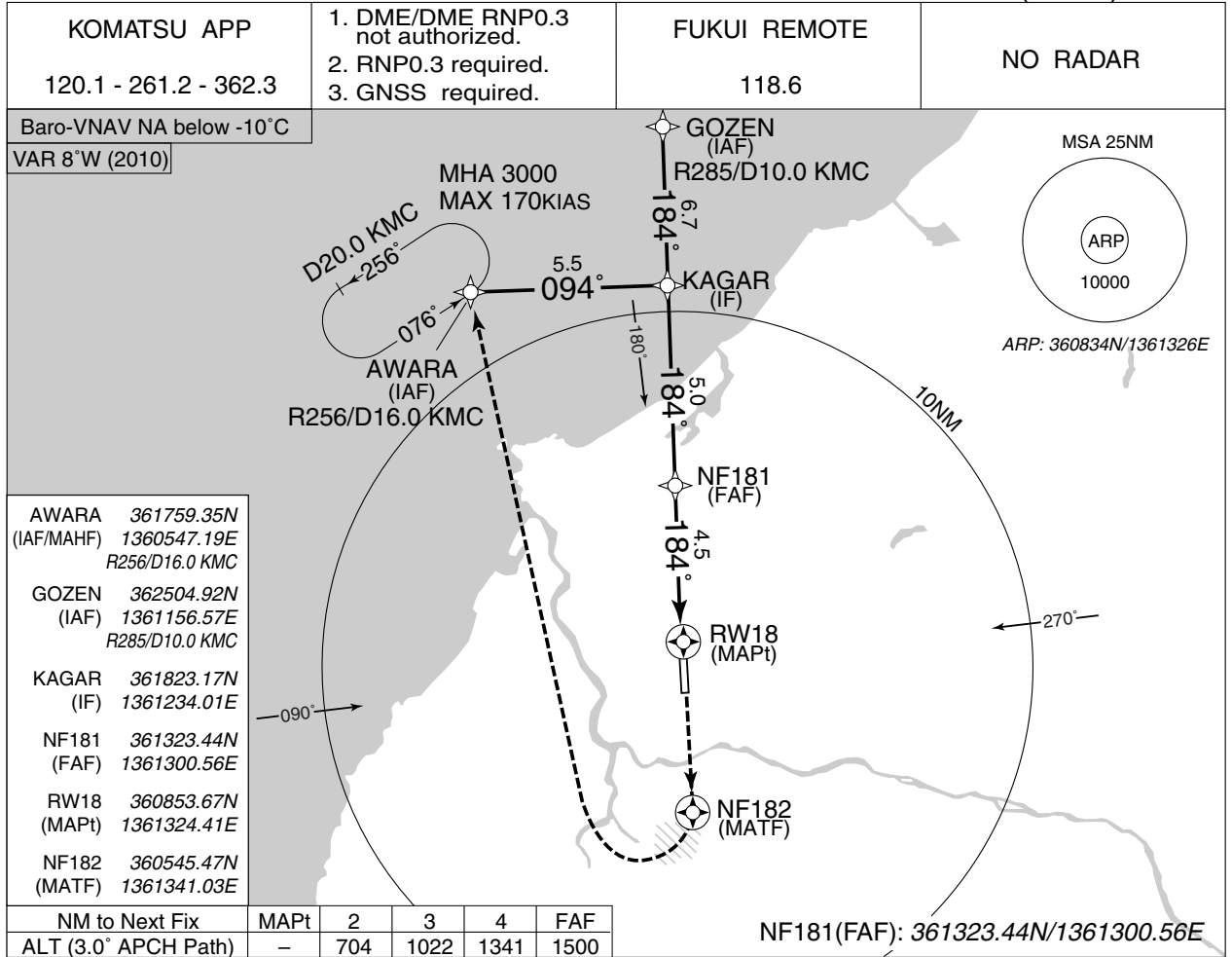
RWY36

Rcmd. Path Terminator	Fix ID (Waypoint Name)	Fly Over	Distance (NM)	MAG Track (TRUE Track)	Turn Direction	Altitude (FT)	Speed Limit (KIAS)	Vertical Angle	Navigation Performance
VA	—	—	—	004° (355.9°)	—	+500	—	—	Basic RNP1
DF	AWARA	—	—	—	L	—	—	—	Basic RNP1

INSTRUMENT APPROACH CHART

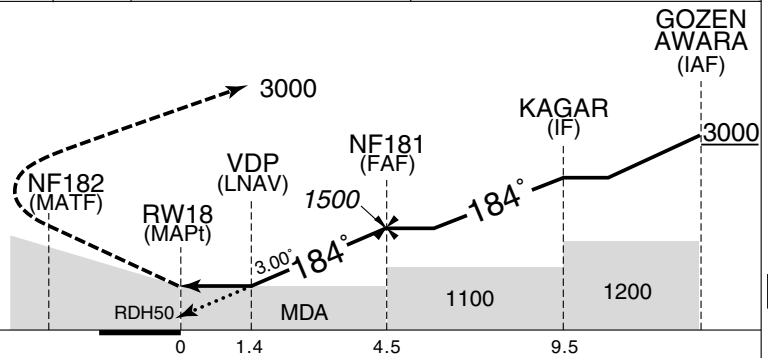
RJNF / FUKUI

RNAV (GNSS) RWY18



MISSED APPROACH
 Climb direct to NF182,
 turn right direct to AWARA
 and hold at 3000FT.
 Contact KOMATSU APP.

Timing not authorized for defining the MAPt.



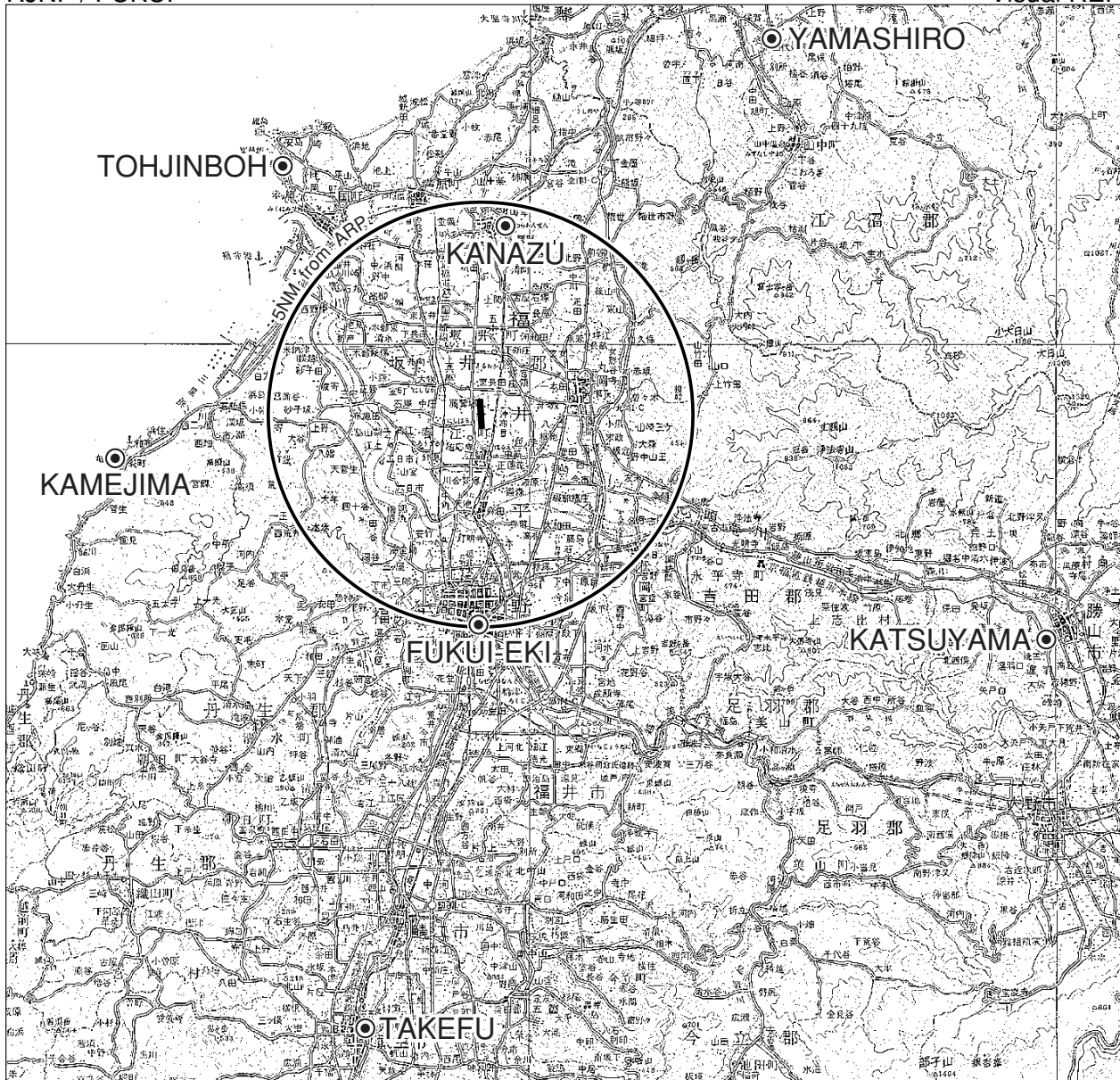
Missed APCH climb gradient MNM 5.0%

MINIMA		THR elev. 17		AD elev. 18		
CAT	LNAV/VNAV		LNAV		CIRCLING	
	DA(H)	CMV	MDA(H)	CMV	MDA(H)	VIS
A	480 (463)	1500	480 (462)	1500	520 (502)	1600
B						
C	-	-	-	-	-	-
D	-	-	-	-	-	-

*MINIMA with Missed APCH climb gradient of 2.5% are not established.

RJNF / FUKUI

Visual REP



Call sign	BRG / DIST from ARP	Remarks
山代 Yamashiro	041°/11.0NM	山代温泉街 Town of the Yamashiro hot-spring
金津 Kanazu	014°/ 5.0NM	JR芦原温泉駅 Station
勝山 Katsuyama	115°/14.0NM	京福電鉄勝山駅 Station
武生 Takefu	195°/15.0NM	JR駅 Station
亀島 kamejima	271°/ 8.3NM	岩礁 Reef
東尋坊 Tohjinboh	327°/ 8.0NM	タワー Tower
福井駅 Fukuieki	187°/ 5.0NM	JR駅 Station