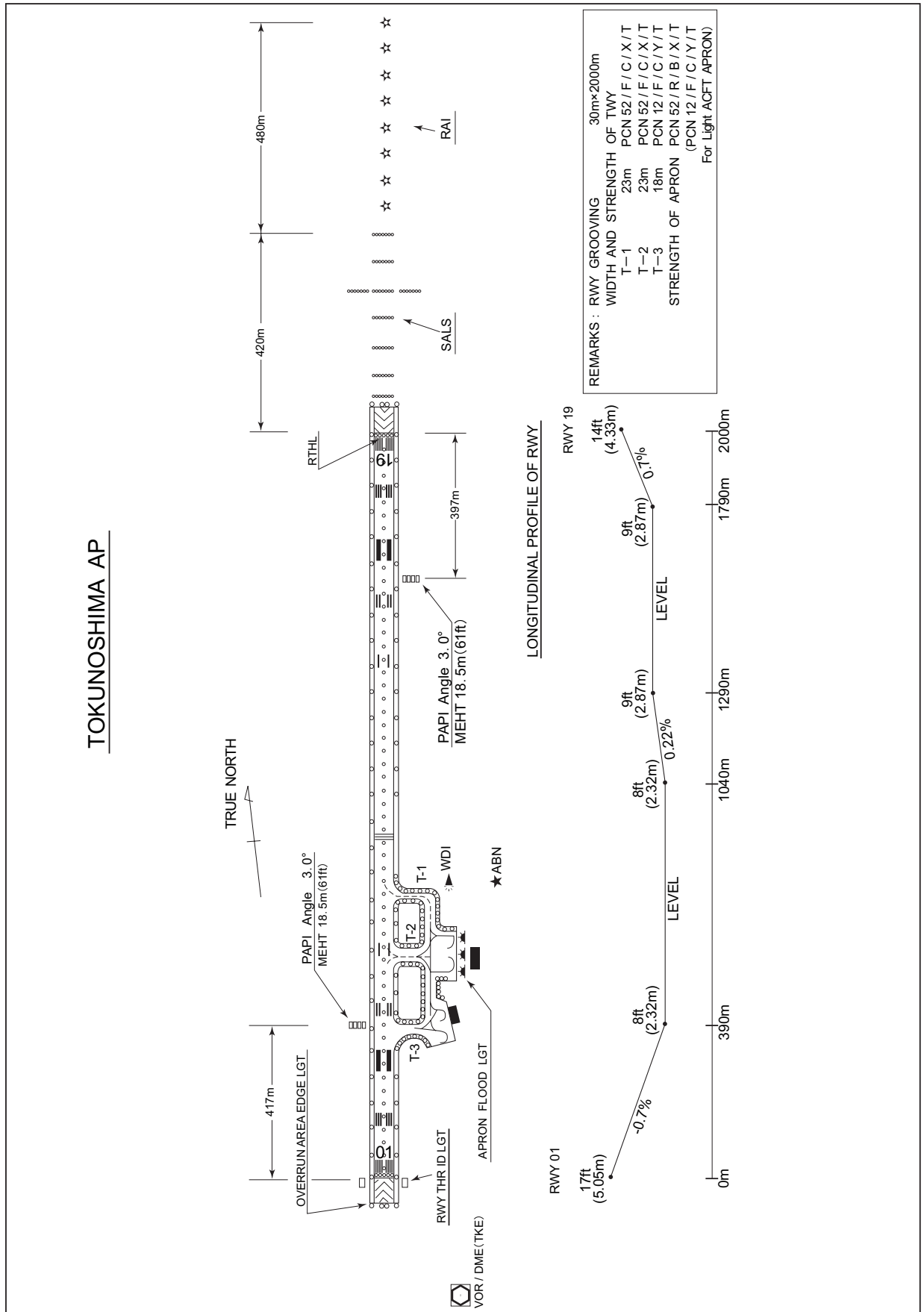


RJKN / TOKUNOSHIMA

AD CHART

TOKUNOSHIMA AP



STANDARD DEPARTURE CHART -INSTRUMENT

RJKN / TOKUNOSHIMA

SID and TRANSITION

TOKUNOSHIMA THREE DEPARTURE

RWY 01 : Turn left within 5NM,...

RWY 19 : Turn right within 5NM,...

...proceed direct to TKE VOR / DME.

Cross TKE VOR / DME at or above 3000FT.

Note : When take off RWY 01, following climb gradient should be maintained until 300FT.

Speed (Knots)	60	90	120	150	180	210
Rate (Feet/Min)	300	450	600	750	900	1050

KUNIG TRANSITION

From over TKE VOR / DME, proceed via TKE R207 to KUNIG or ONC VORTAC.

Cross KUNIG or ONC VORTAC at assigned altitude.

ANOXA TRANSITION

From over TKE VOR/DME, proceed via TKE R022 to 15DME, via ONC R026 to ANOXA.

Cross ANOXA at assigned altitude.

KASARI TRANSITION

From over TKE VOR/DME, proceed via TKE R096 to PINNE, via AME R227 to YUWAN or AME VOR/DME.

Cross YUWAN(AME VOR/DME) at assigned altitude.

TOKUNOSHIMA NORTH EIGHT DEPARTURE

RWY 01 : Turn left,...

RWY 19 : Climb RWY HDG until 1NM from RWY end/TKE 0.9DME, turn right,...

...climb via TKE R339 to HATOH, to TKE R339/39DME(ALC R273),

turn right via ALC R276 to MEKAX.

Cross HATOH at or below 5000FT, cross TKE R339/39DME (ALC R273) at or above 9000FT, cross ALC R276/33DME(TKE R011) at assigned altitude.

Note : When take off RWY 01, following climb gradient should be maintained until 300FT.

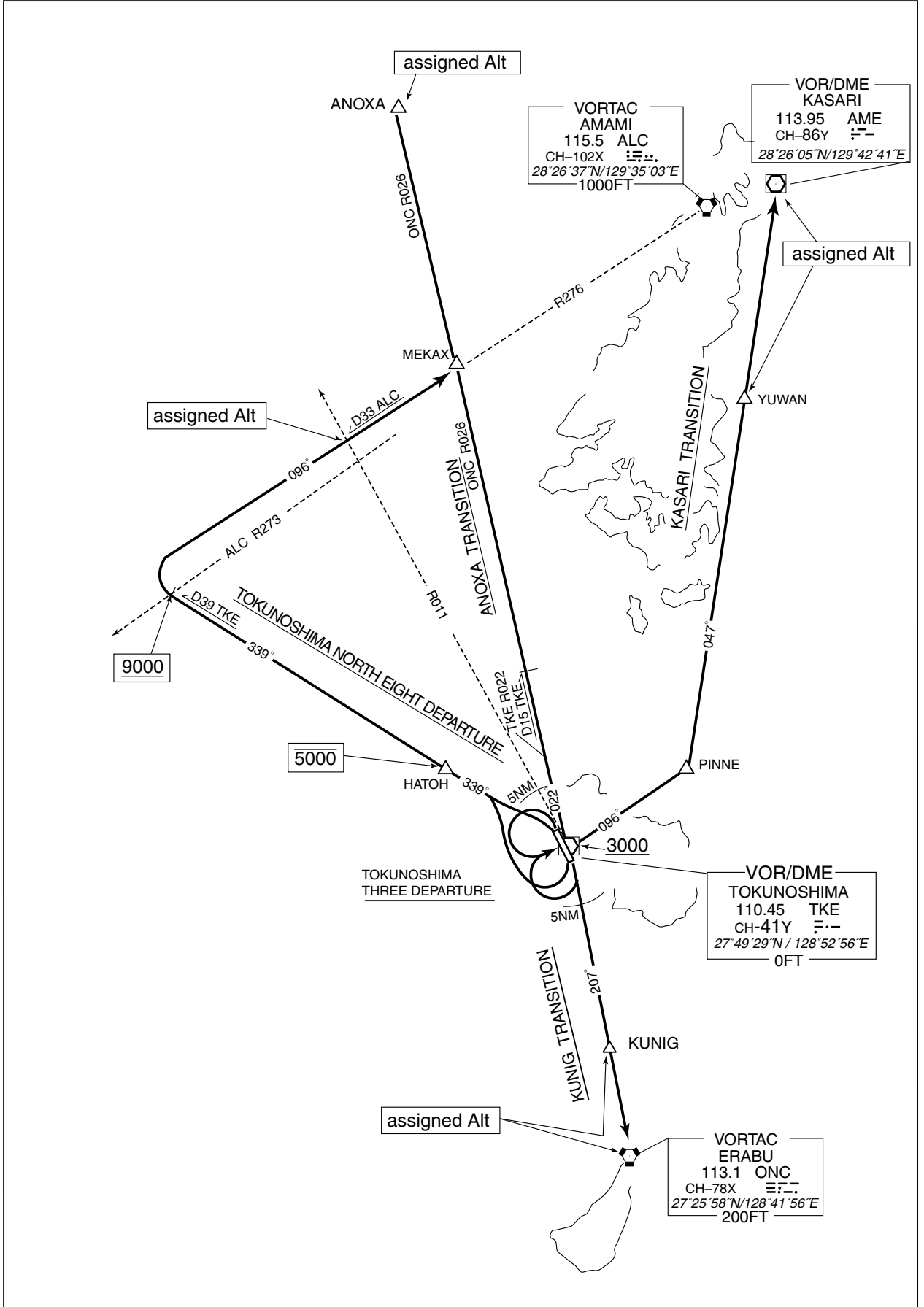
When take off RWY 19, following climb gradient should be maintained until 900FT.

Speed (Knots)	60	90	120	150	180	210
Rate (Feet/Min)	300	450	600	750	900	1050

STANDARD DEPARTURE CHART -INSTRUMENT

RJKN / TOKUNOSHIMA

SID and TRANSITION



STANDARD ARRIVAL CHART - INSTRUMENT

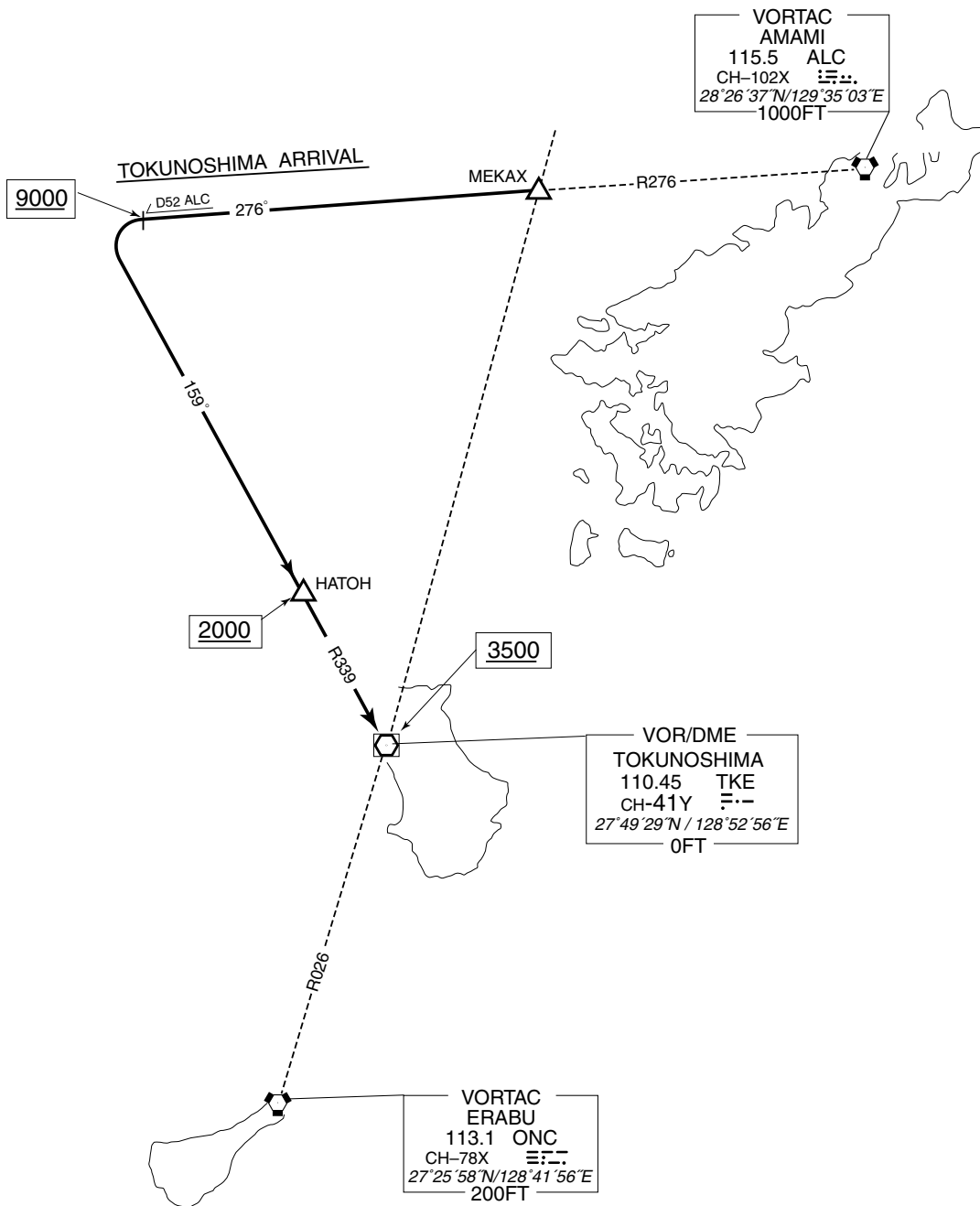
RJKN / TOKUNOSHIMA

STAR

TOKUNOSHIMA ARRIVAL

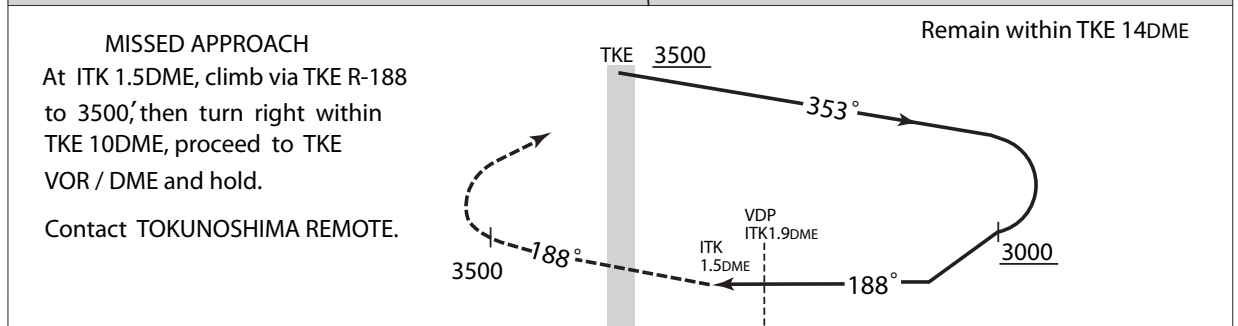
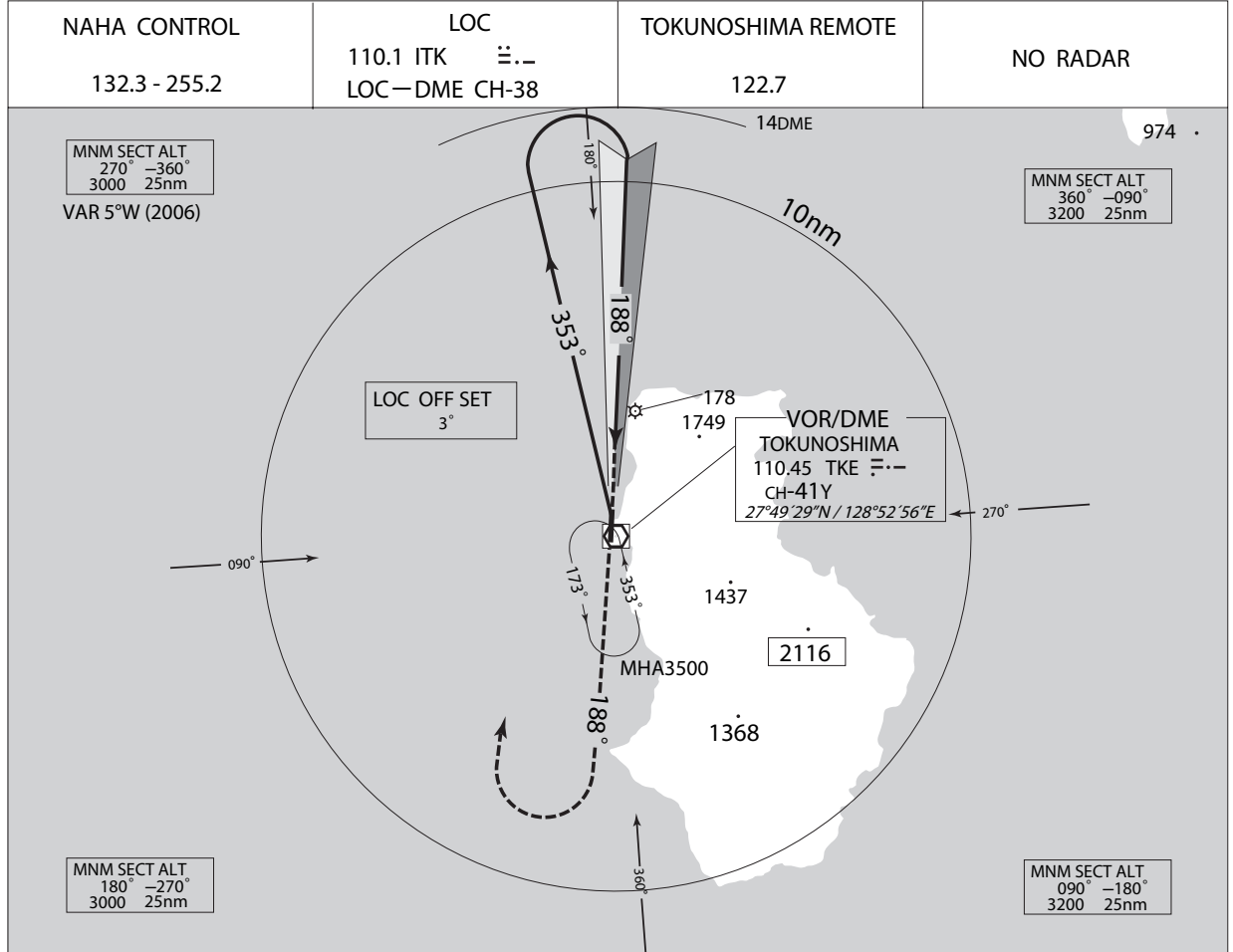
From over MEKAX via ALC R276 to intercept and proceed via TKE R339 to HATOH(TKE VOR/DME).

Cross ALC R276/52DME at or above 9000FT, cross HATOH at or above 2000FT (TKE VOR/DME at or above 3500FT).



INSTRUMENT APPROACH CHART

RJKN / TOKUNOSHIMA VOR / DME / LOC RWY 19



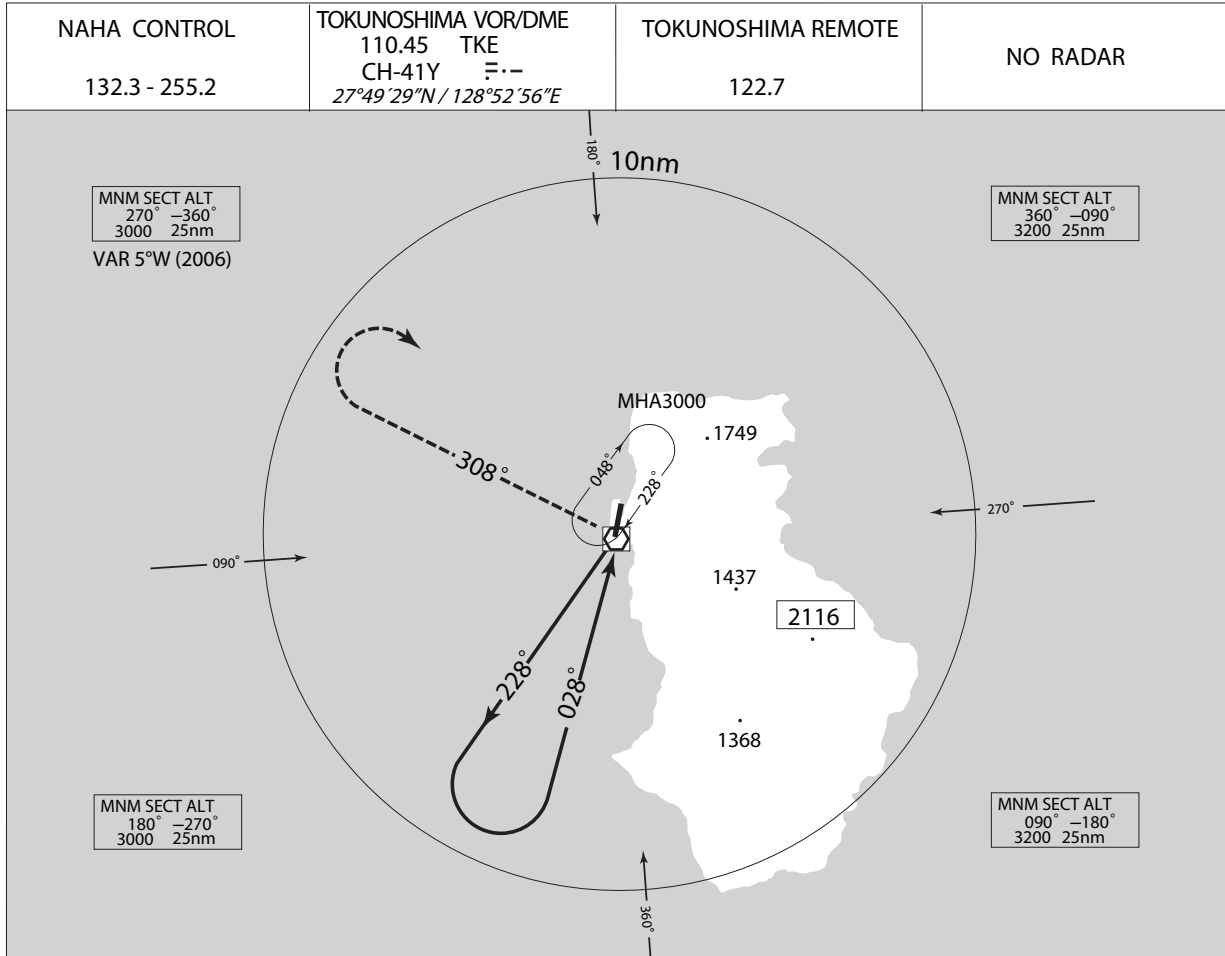
MINIMA		THR elev. 14	AD elev. 8	
CAT			CIRCLING	
	MDA(H)	CMV	MDA(H)	VIS
A	500 (492)	1200	760 (752)	1600
B			1100 (1092)	
C			1220 (1212)	2400
D			1520 (1512)	3200

Circling to West side of RWY only

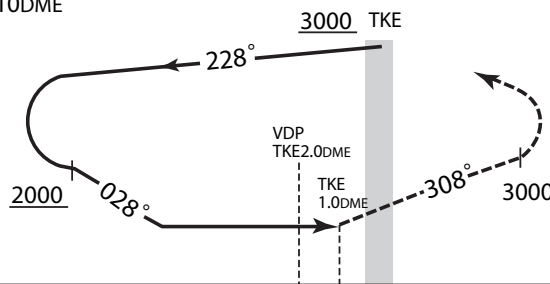
INSTRUMENT APPROACH CHART

RJKN / TOKUNOSHIMA

VOR / DME RWY 01



Remain within TKE 10DME



MISSED APPROACH
At 1.0 DME prior to TKE VOR / DME, turn left climb via TKE R-308 to 3000', then turn right within TKE 10DME, proceed to TKE VOR / DME and hold.
Contact TOKUNOSHIMA REMOTE.

	MINIMA	THR elev. 17	AD elev. 8		
				CIRCLING	
CAT	MDA(H)	CMV	MDA(H)	VIS	
A	700 (692)	1500	760 (752)	1600	
B			1100 (1092)		
C		2000	1220 (1212)	2400	
D			1520 (1512)	3200	

Circling to West side of RWY only

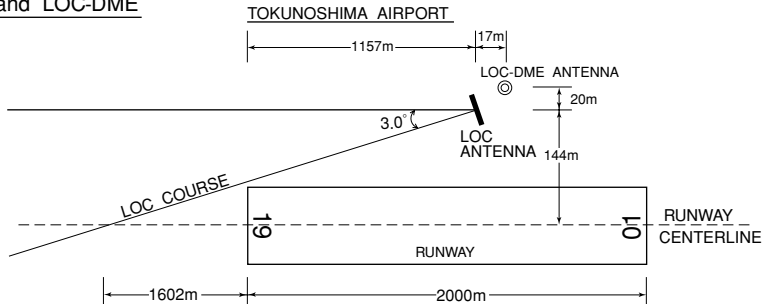
RJKN / TOKUNOSHIMA

Visual REP



Call sign	BRG / DIST from ARP	Remarks
与名間崎 Yonamazaki	013°/3.0NM	灯台 Lighthouse
金見崎 Kanamizaki	057°/6.0NM	灯台 Lighthouse
亀徳港 Kametokukoh	129°/9.3NM	漁港 Harbor
犬田布崎 Inutabuzaki	184°/6.4NM	白い大きな慰霊碑 Big white monument

LOC and LOC-DME



- REMARKS : 1. LOC OFF SET ANGLE 3.0°
2. LOC beam BRG (MAG) 188°
3. ELEV of LOC-DME 7.7m (25ft)

LOC UNUSABLE : BEYOND 10DEGREES EAST (90Hz) SIDE OF COURSE.

