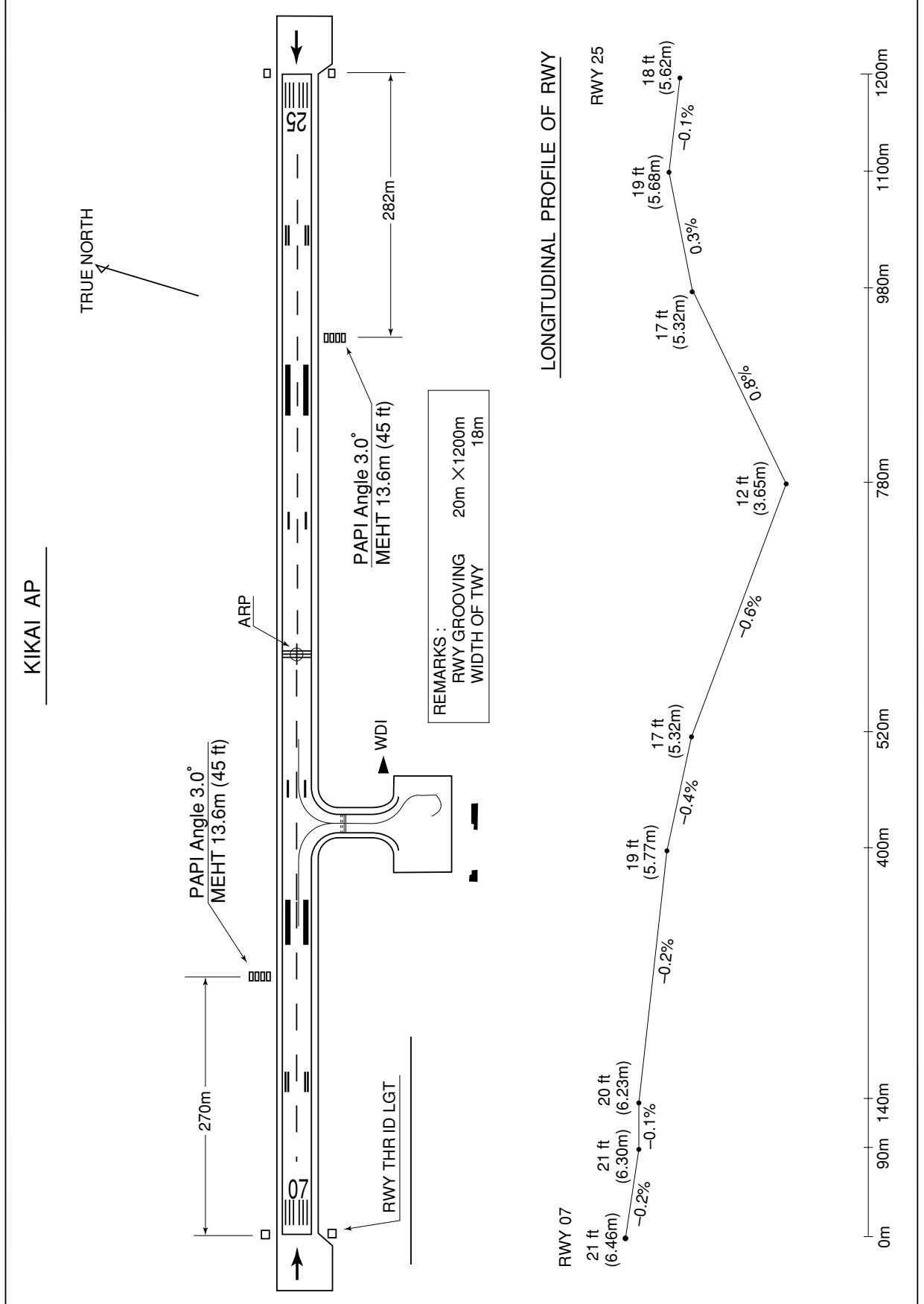


RJKI / KIKAI

AD CHART



STANDARD DEPARTURE CHART -INSTRUMENT

RJKI / KIKAI

SID

KASARI TWO DEPARTURE

RWY07 : Turn left,...

RWY25 : Turn right,...

...direct to AME VOR/DME.

Cross AME VOR/DME at or above 3000FT.

Note RWY07 : 5.0% climb gradient required up to 700FT.

OBST ALT 459FT located at 2.41NM 088° FM end of RWY07.

NAKATANE THREE DEPARTURE

RWY07 : Climb RWY HDG...

RWY25 : Turn right HDG 075°...

... to intercept and proceed via AME 19.0DME counterclockwise ARC, via AME R032/
TGE R213 to TGE VOR/DME.

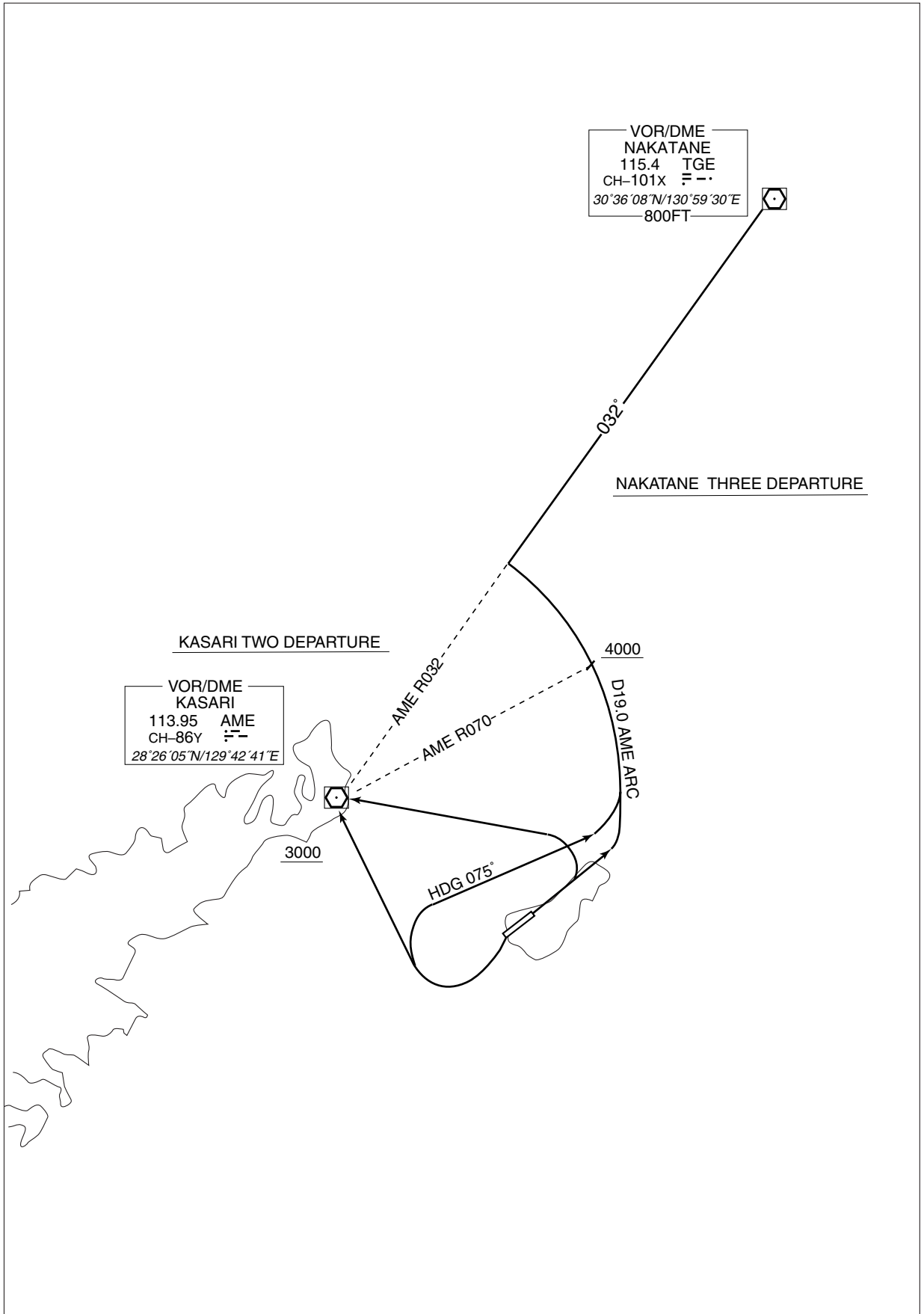
Cross AME R070 at or above 4000FT.

Note RWY25 : Departure turn limited to 175KIAS maximum until established HDG 075°.

RWY07 : 5.0% climb gradient required up to 700FT.

OBST ALT 459FT located at 2.41NM 088° FM end of RWY07.

STANDARD DEPARTURE CHART -INSTRUMENT

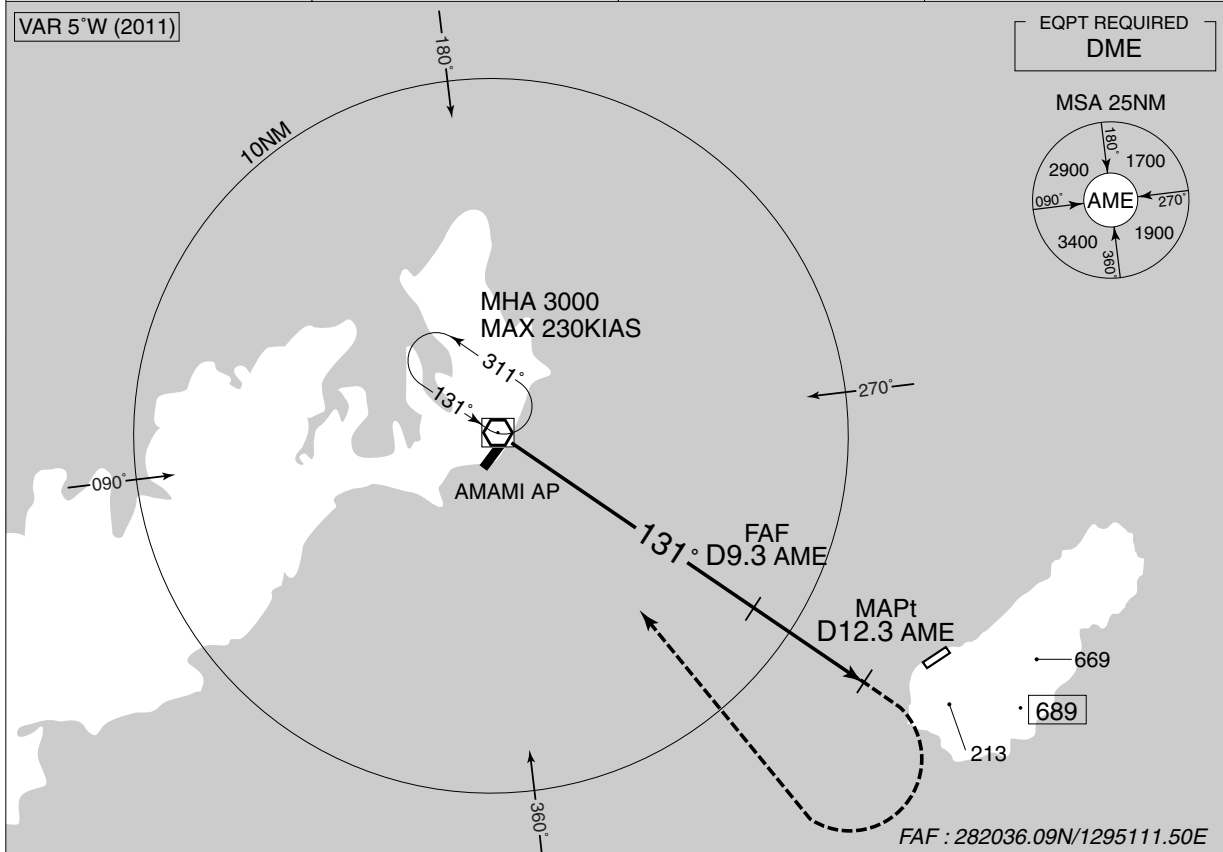


INSTRUMENT APPROACH CHART

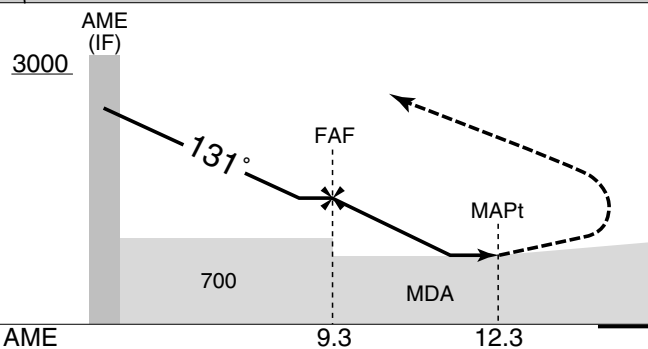
RJKI / KIKAI

➔ VOR A

NAHA CONTROL 132.3 – 255.2	KASARI VOR/DME 113.95 AME CH - 86Y 28°26'05"N/129°42'41"E	KIKAI REMOTE 118.0	NO RADAR
-------------------------------	--	-----------------------	----------



MISSED APPROACH
Turn right proceed to AME
VOR/DME and hold at 3000FT.
Contact KIKAI REMOTE.



Timing not authorized for defining the MAPt.

DME FM AME 9.3 12.3

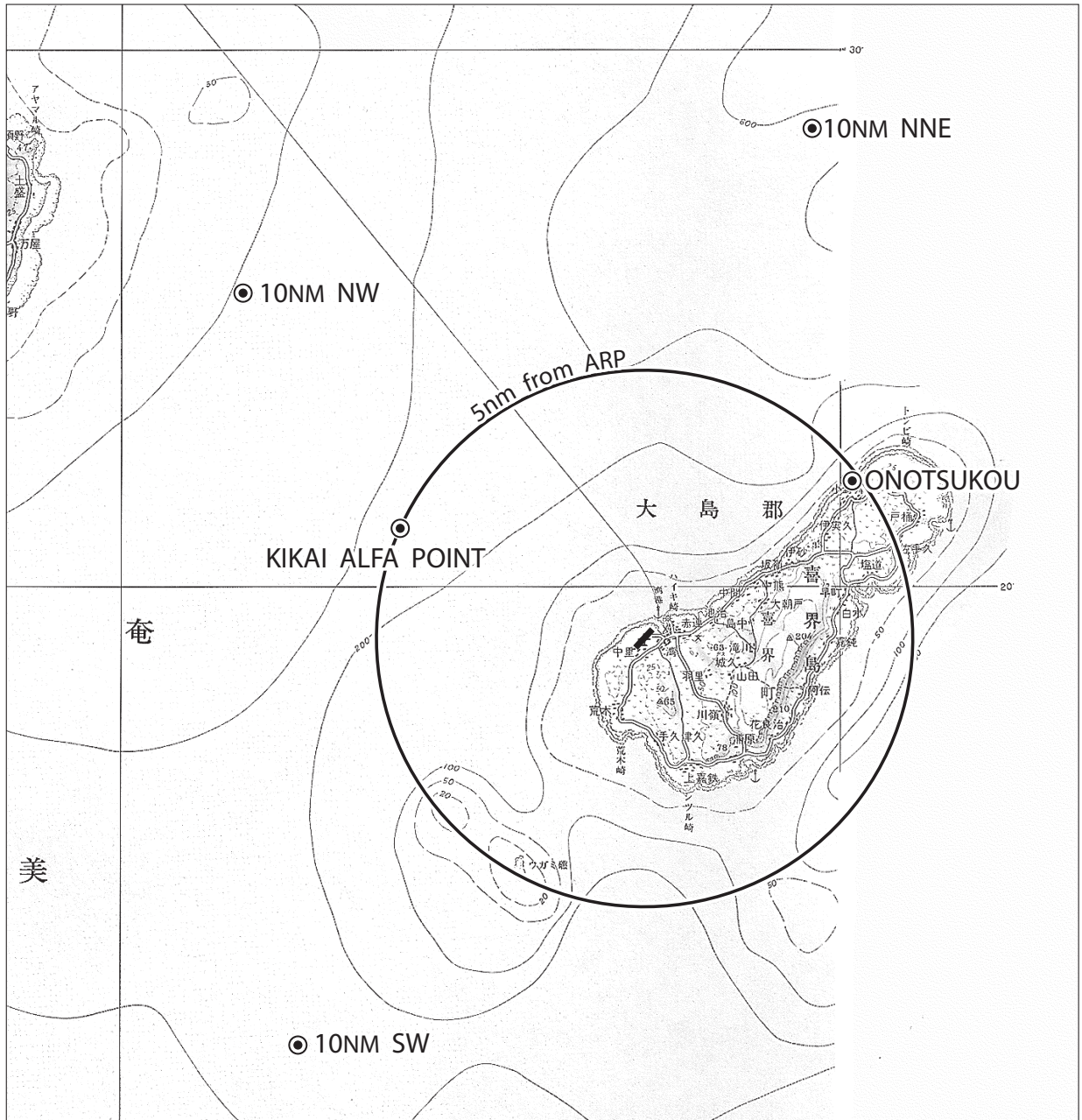
Missed APCH climb gradient MNM 3.0%

MINIMA		AD elev. 15
CAT	CIRCLING	
	MDA(H)	VIS
A	460 (445)	1600
B	500 (485)	
C	660 (645)	2400
D	—	—

MINIMA with Missed APCH climb gradient of 2.5% are not established.
Circling to NORTH side of RWY only.

RJKI / KIKAI

Visual REP



Call sign	BRG / DIST from ARP	Remarks
小野津港 Onotsukou	059° / 4.8NM	港 Harbor
10NM NNE	022.5° / 10NM	海上 Over the sea
10NM NW	315° / 10NM	海上 Over the sea
喜界ALFA POINT Kikai Alfa Point	294° / 5NM	喜界空港と奄美空港を結ぶ直線上 On the straight line connecting Kikai AP and Amami AP
10NM SW	225° / 10NM	海上 Over the sea

INTENTIONALLY LEFT BLANK