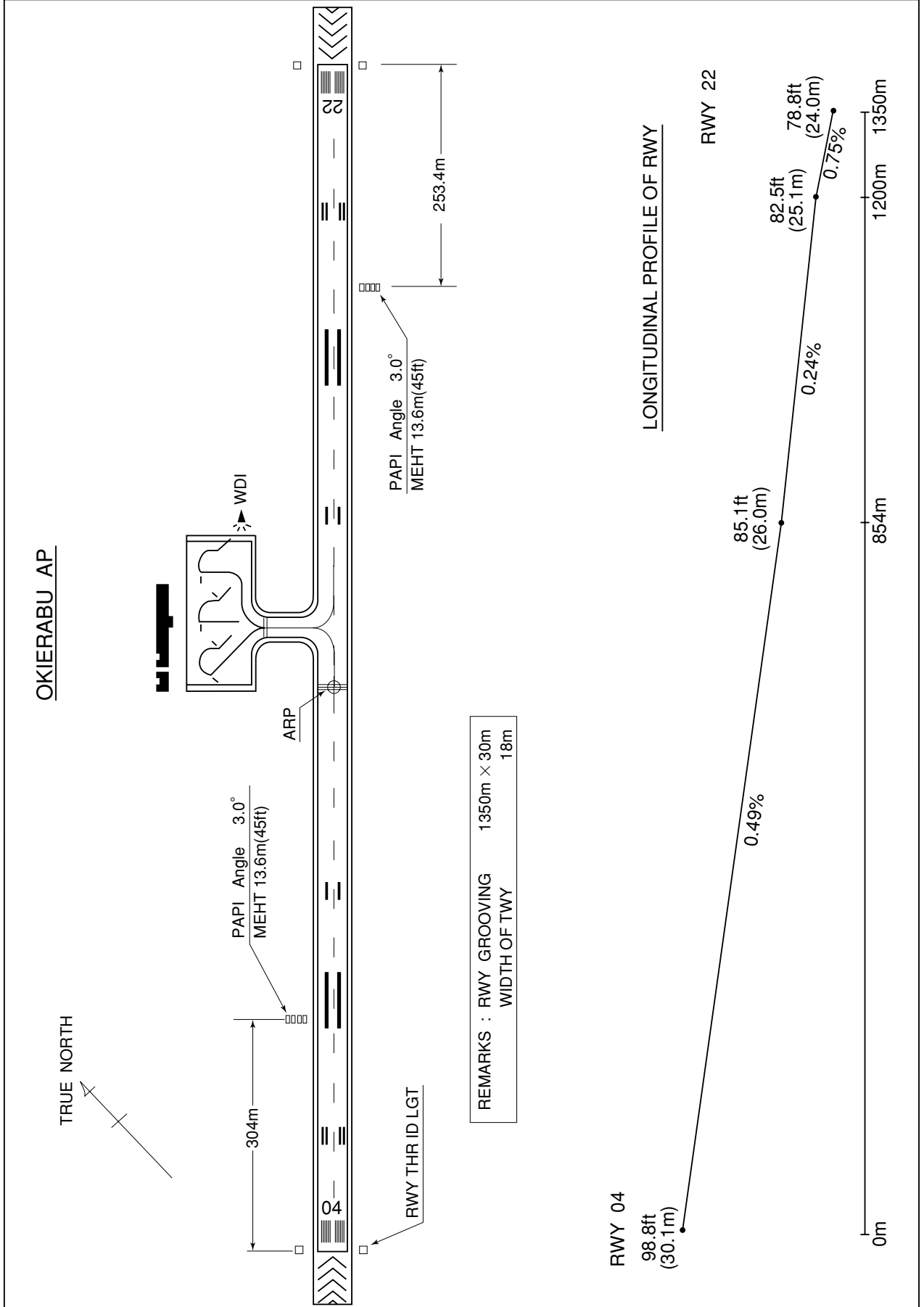


RJKB / OKIERABU

AD CHART



## STANDARD DEPARTURE CHART -INSTRUMENT

RJKB / OKIERABU

SID

MEKAX NORTH TWO DEPARTURE

RWY04 : Climb RWY HDG until 500FT, turn left...

RWY22 : Climb RWY HDG until 600FT, turn left...

Climb via ONC R026 to MEKAX.

MEKAX NORTHWEST THREE DEPARTURE

RWY04 : Climb RWY HDG until 500FT, turn left...

RWY22 : Climb RWY HDG until 600FT, turn left...

Climb via ONC R350 to intercept and proceed via ALC R245, then turn left to intercept and proceed via ONC R026 to MEKAX.

Cross ONC R350/10DME at or below 5000FT, cross ONC R350/24DME at or above 8000FT, cross ALC R245/50DME(ONC R012) at assigned altitude.

YUWAN THREE DEPARTURE

RWY04 : Climb RWY HDG until 500FT, turn right...

RWY22 : Climb RWY HDG until 600FT turn left...

...Climb via ONC R046 to YUWAN.

ASATO SEVEN DEPARTURE

RWY04 : Climb RWY HDG until 500FT, turn right...

RWY22 : Climb RWY HDG until 600FT turn right...

...Climb via ONC R219 to ASATO.

TAMAK FOUR DEPARTURE

RWY04 : Climb RWY HDG until 500FT, turn right...

RWY22 : Climb RWY HDG until 600FT turn left...

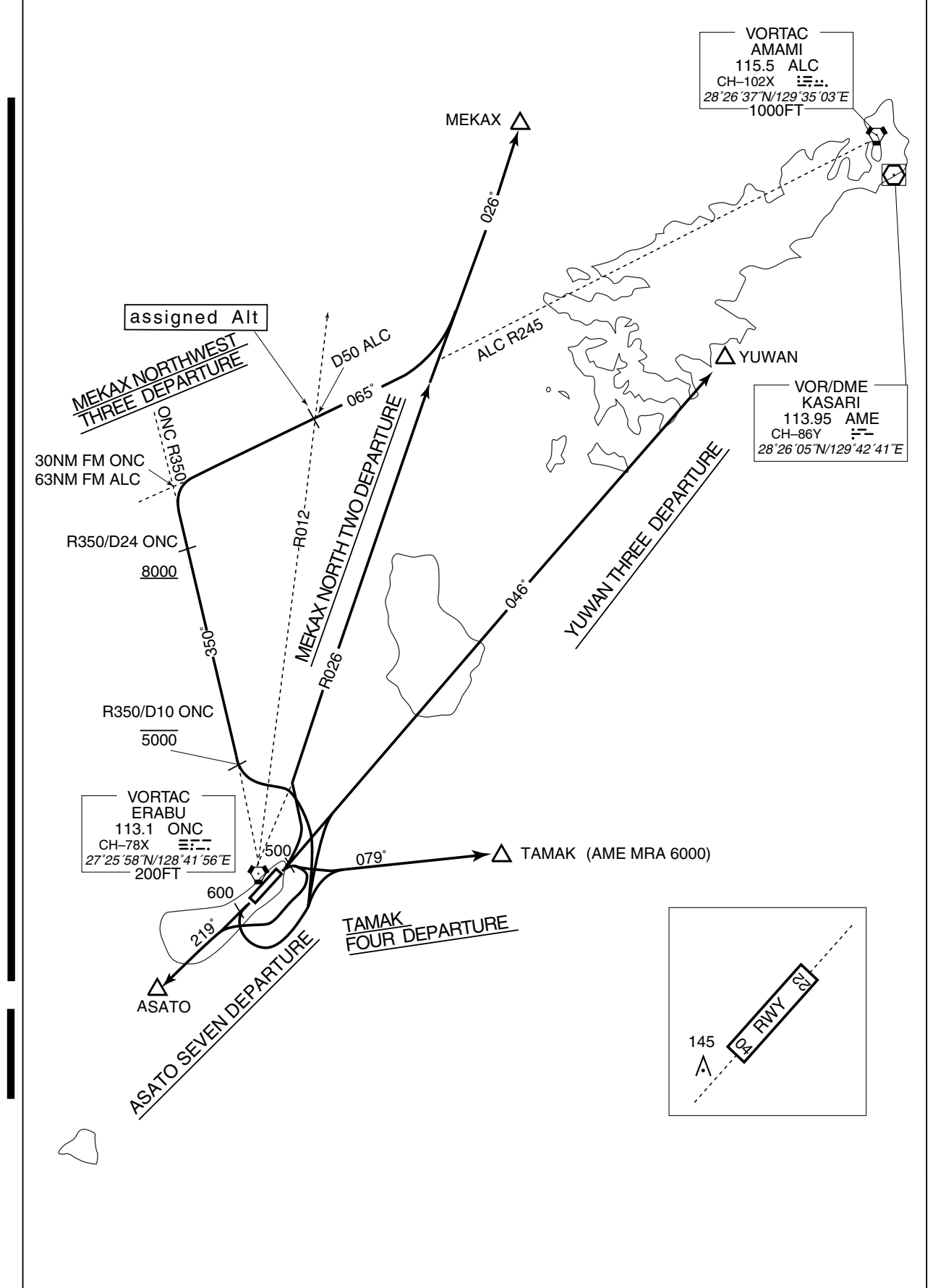
...Climb via ONC R079 to TAMAK\*.

\* AME MRA6000FT

STANDARD DEPARTURE CHART -INSTRUMENT

RJKB / OKIERABU

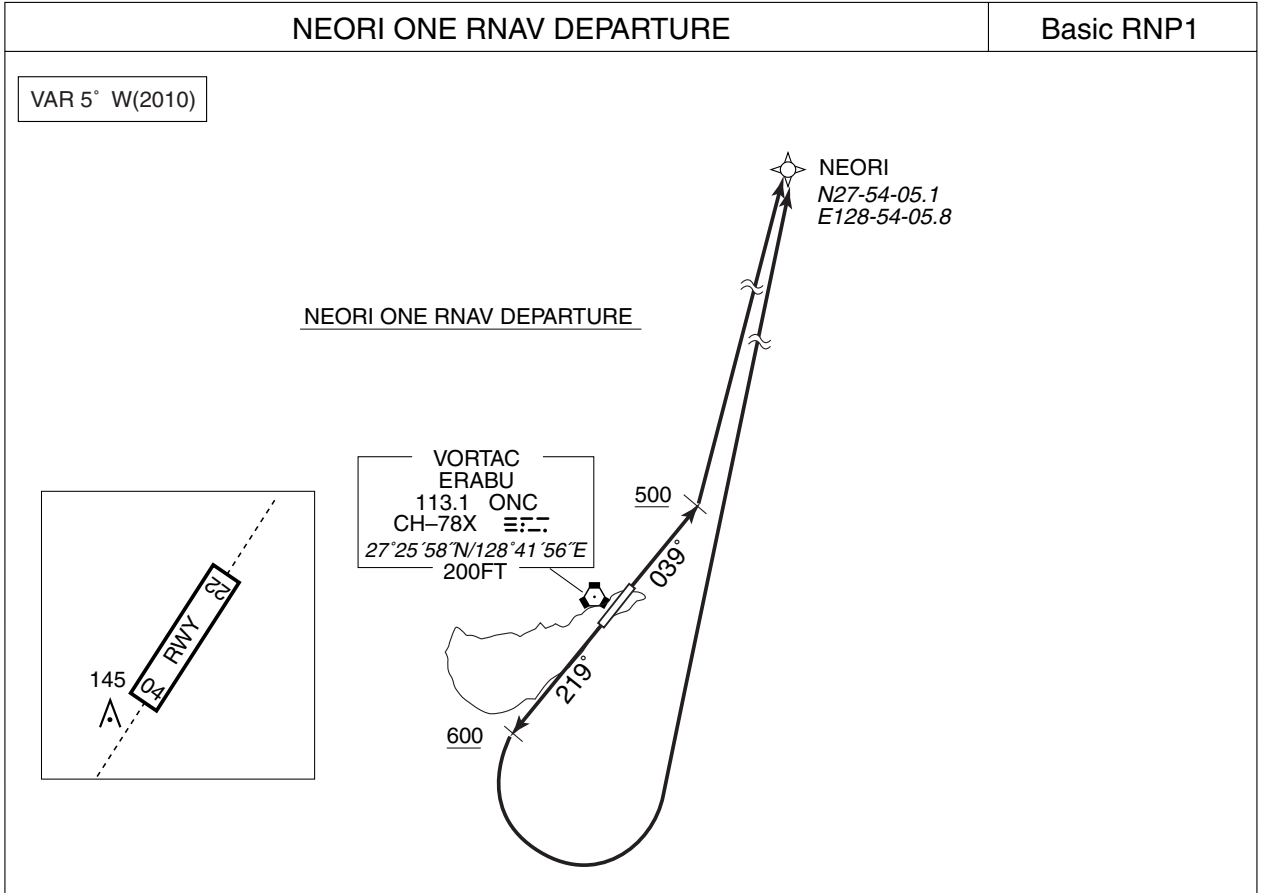
SID



STANDARD DEPARTURE CHART -INSTRUMENT

RJKB / OKIERABU

➔ RNAV SID



NEORI ONE RNAV DEPARTURE

RWY04: Climb on HDG039° at or above 500FT, turn left direct to NEORI.  
 RWY22: Climb on HDG219° at or above 600FT, turn left direct to NEORI.

**RWY04**

| Rcmd. Path Terminator | Fix ID (Waypoint Name) | Fly Over | Distance (NM) | MAG Track (TRUE Track) | Turn Direction | Altitude (FT) | Speed Limit (KIAS) | Vertical Angle | Navigation Performance |
|-----------------------|------------------------|----------|---------------|------------------------|----------------|---------------|--------------------|----------------|------------------------|
| VA                    | —                      | —        | —             | 039°<br>(034.1°)       | —              | +500          | —                  | —              | Basic RNP1             |
| DF                    | NEORI                  | —        | —             | —                      | L              | —             | —                  | —              | Basic RNP1             |

**RWY22**

| Rcmd. Path Terminator | Fix ID (Waypoint Name) | Fly Over | Distance (NM) | MAG Track (TRUE Track) | Turn Direction | Altitude (FT) | Speed Limit (KIAS) | Vertical Angle | Navigation Performance |
|-----------------------|------------------------|----------|---------------|------------------------|----------------|---------------|--------------------|----------------|------------------------|
| VA                    | —                      | —        | —             | 219°<br>(214.1°)       | —              | +600          | —                  | —              | Basic RNP1             |
| DF                    | NEORI                  | —        | —             | —                      | L              | —             | —                  | —              | Basic RNP1             |

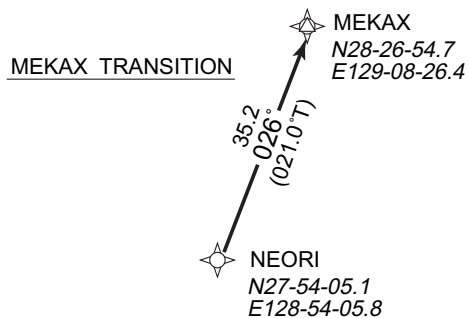
STANDARD DEPARTURE CHART -INSTRUMENT

RJKB / OKIERABU

➔ RNAV TRANSITION

| MEKAX TRANSITION  |                        | RNAV1  |
|---|------------------------|--|
| Note 1 ) DME/DME/IRU or GNSS required.<br>※The aircraft equipped with only DME/DME/IRU must be able to update its position without delay at the starting point of take-off roll.<br>2 ) RADAR service required. | Critical DME           | ALC : 28NM to MEKAX - MEKAX<br>ONC : 13NM to MEKAX - MEKAX |
|   | DME GAP                | NEORI - 28NM to MEKAX                                      |
|   | Inappropriate Nav aids | See AD1.1.6.10.3. Inappropriate NAVAIDs for RNAV1          |

VAR 5° W(2010)



MEKAX TRANSITION  
From NEORI to MEKAX.

| Rcmd. Path Terminator | Fix ID (Waypoint Name) | Fly Over | Distance (NM) | MAG Track (TRUE Track) | Turn Direction | Altitude (FT) | Speed Limit (KIAS) | Vertical Angle | Navigation Performance |
|-----------------------|------------------------|----------|---------------|------------------------|----------------|---------------|--------------------|----------------|------------------------|
| IF                    | NEORI                  | —        | —             | —                      | —              | —             | —                  | —              | RNAV1                  |
| TF                    | MEKAX                  | —        | 35.2          | 026°<br>(021.0°)       | —              | —             | —                  | —              | RNAV1                  |

STANDARD DEPARTURE CHART -INSTRUMENT

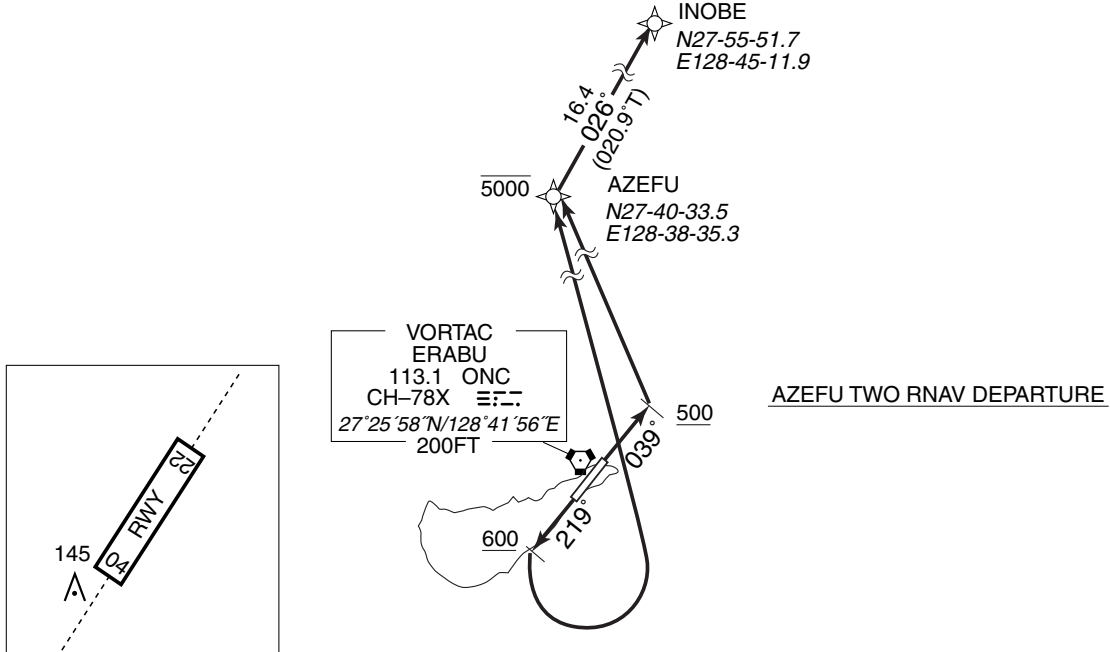
RJKB / OKIERABU

RNAV SID

AZEFU TWO RNAV DEPARTURE

Basic RNP1

VAR 5° W(2010)



AZEFU TWO RNAV DEPARTURE

- RWY04: Climb on HDG039° at or above 500FT, turn left direct to AZEFU at or below 5000FT, to INOBE.
- RWY22: Climb on HDG219° at or above 600FT, turn left direct to AZEFU at or below 5000FT, to INOBE.

RWY04

| Rcmd. Path Terminator | Fix ID (Waypoint Name) | Fly Over | Distance (NM) | MAG Track (TRUE Track) | Turn Direction | Altitude (FT) | Speed Limit (KIAS) | Vertical Angle | Navigation Performance |
|-----------------------|------------------------|----------|---------------|------------------------|----------------|---------------|--------------------|----------------|------------------------|
| VA                    | —                      | —        | —             | 039° (034.1°)          | —              | +500          | —                  | —              | Basic RNP1             |
| DF                    | AZEFU                  | —        | —             | —                      | L              | -5000         | —                  | —              | Basic RNP1             |
| TF                    | INOBE                  | —        | 16.4          | 026° (020.9°)          | —              | —             | —                  | —              | Basic RNP1             |

RWY22

| Rcmd. Path Terminator | Fix ID (Waypoint Name) | Fly Over | Distance (NM) | MAG Track (TRUE Track) | Turn Direction | Altitude (FT) | Speed Limit (KIAS) | Vertical Angle | Navigation Performance |
|-----------------------|------------------------|----------|---------------|------------------------|----------------|---------------|--------------------|----------------|------------------------|
| VA                    | —                      | —        | —             | 219° (214.1°)          | —              | +600          | —                  | —              | Basic RNP1             |
| DF                    | AZEFU                  | —        | —             | —                      | L              | -5000         | —                  | —              | Basic RNP1             |
| TF                    | INOBE                  | —        | 16.4          | 026° (020.9°)          | —              | —             | —                  | —              | Basic RNP1             |

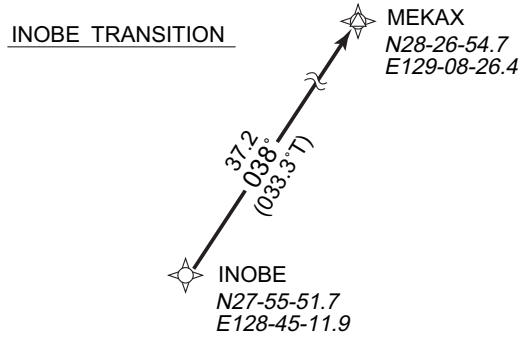
STANDARD DEPARTURE CHART -INSTRUMENT

RJKB / OKIERABU

➔ RNAV TRANSITION

| INOBE TRANSITION  |                        | RNAV1   |
|---|------------------------|---|
| Note 1 ) DME/DME/IRU or GNSS required.<br>※The aircraft equipped with only DME/DME/IRU must be able to update its position without delay at the starting point of take-off roll.<br>2 ) RADAR service required. | Critical DME           | ALC : INOBE - MEKAX<br>ONC : INOBE - 28NM to MEKAX<br>13NM to MEKAX - MEKAX |
|   | DME GAP                | —   |
|   | Inappropriate Nav aids | See AD1.1.6.10.3. Inappropriate NAVAIDs for RNAV1                           |

VAR 5° W(2010)



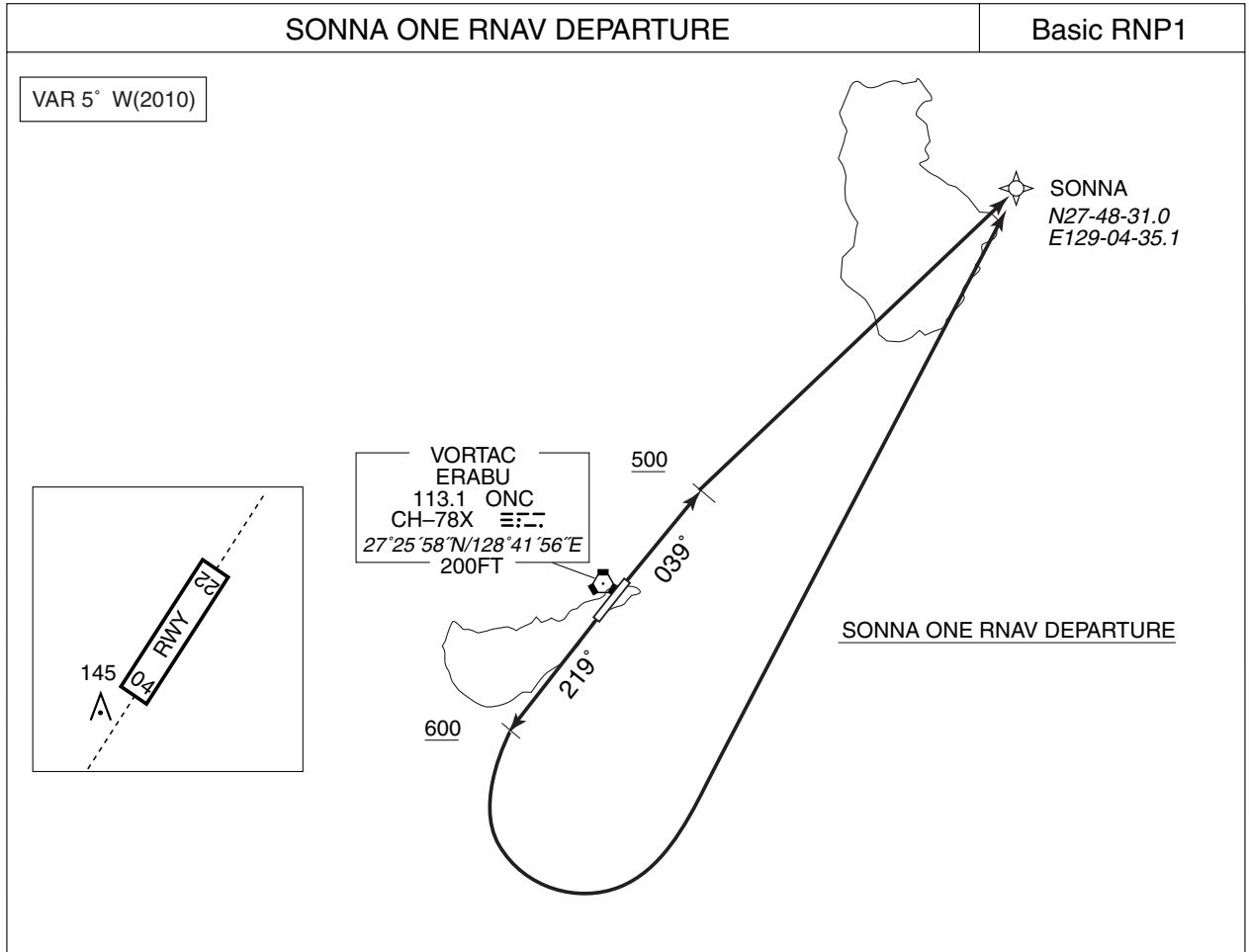
INOBE TRANSITION  
From INOBE to MEKAX.

| Rcmd. Path Terminator | Fix ID (Waypoint Name) | Fly Over | Distance (NM) | MAG Track (TRUE Track) | Turn Direction | Altitude (FT) | Speed Limit (KIAS) | Vertical Angle | Navigation Performance |
|-----------------------|------------------------|----------|---------------|------------------------|----------------|---------------|--------------------|----------------|------------------------|
| IF                    | INOBE                  | —        | —             | —                      | —              | —             | —                  | —              | RNAV1                  |
| TF                    | MEKAX                  | —        | 37.2          | 038°<br>(033.3°)       | —              | —             | —                  | —              | RNAV1                  |

STANDARD DEPARTURE CHART -INSTRUMENT

RJKB / OKIERABU

➔ RNAV SID



SONNA ONE RNAV DEPARTURE

RWY04: Climb on HDG039° at or above 500FT, direct to SONNA.

RWY22: Climb on HDG219° at or above 600FT, turn left direct to SONNA.

**RWY04**

| Rcmd. Path Terminator | Fix ID (Waypoint Name) | Fly Over | Distance (NM) | MAG Track (TRUE Track) | Turn Direction | Altitude (FT) | Speed Limit (KIAS) | Vertical Angle | Navigation Performance |
|-----------------------|------------------------|----------|---------------|------------------------|----------------|---------------|--------------------|----------------|------------------------|
| VA                    | —                      | —        | —             | 039° (034.1°)          | —              | +500          | —                  | —              | Basic RNP1             |
| DF                    | SONNA                  | —        | —             | —                      | —              | —             | —                  | —              | Basic RNP1             |

**RWY22**

| Rcmd. Path Terminator | Fix ID (Waypoint Name) | Fly Over | Distance (NM) | MAG Track (TRUE Track) | Turn Direction | Altitude (FT) | Speed Limit (KIAS) | Vertical Angle | Navigation Performance |
|-----------------------|------------------------|----------|---------------|------------------------|----------------|---------------|--------------------|----------------|------------------------|
| VA                    | —                      | —        | —             | 219° (214.1°)          | —              | +600          | —                  | —              | Basic RNP1             |
| DF                    | SONNA                  | —        | —             | —                      | L              | —             | —                  | —              | Basic RNP1             |



STANDARD DEPARTURE CHART -INSTRUMENT

RJKB / OKIERABU

➔ RNAV TRANSITION

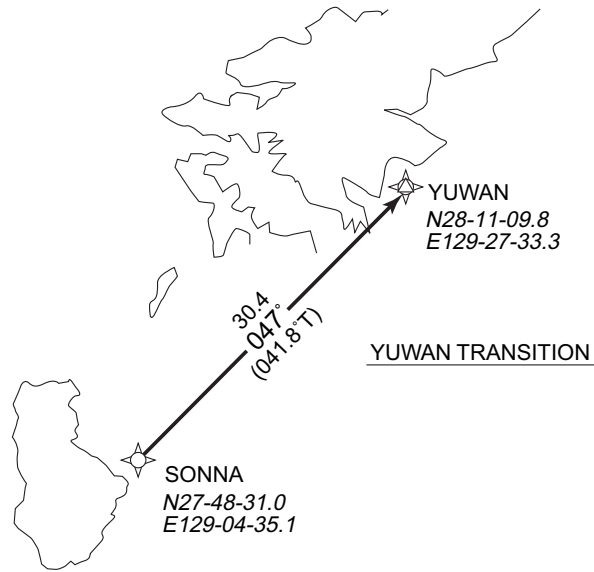
YUWAN TRANSITION

RNAV1

Note 1 ) DME/DME/IRU or GNSS required.  
 ※The aircraft equipped with only DME/DME/IRU must be able to update its position without delay at the starting point of take-off roll.  
 2 ) RADAR service required.

|                       |   |
|-----------------------|---|
| Critical DME          | TKE, ALC : 23NM to YUWAN - 20NM to YUWAN          |
| DME GAP               | SONNA - 23NM to YUWAN<br>20NM to YUWAN - YUWAN    |
| Inappropriate Navaids | See AD1.1.6.10.3. Inappropriate NAVAIDs for RNAV1 |

VAR 5° W(2010)



YUWAN TRANSITION

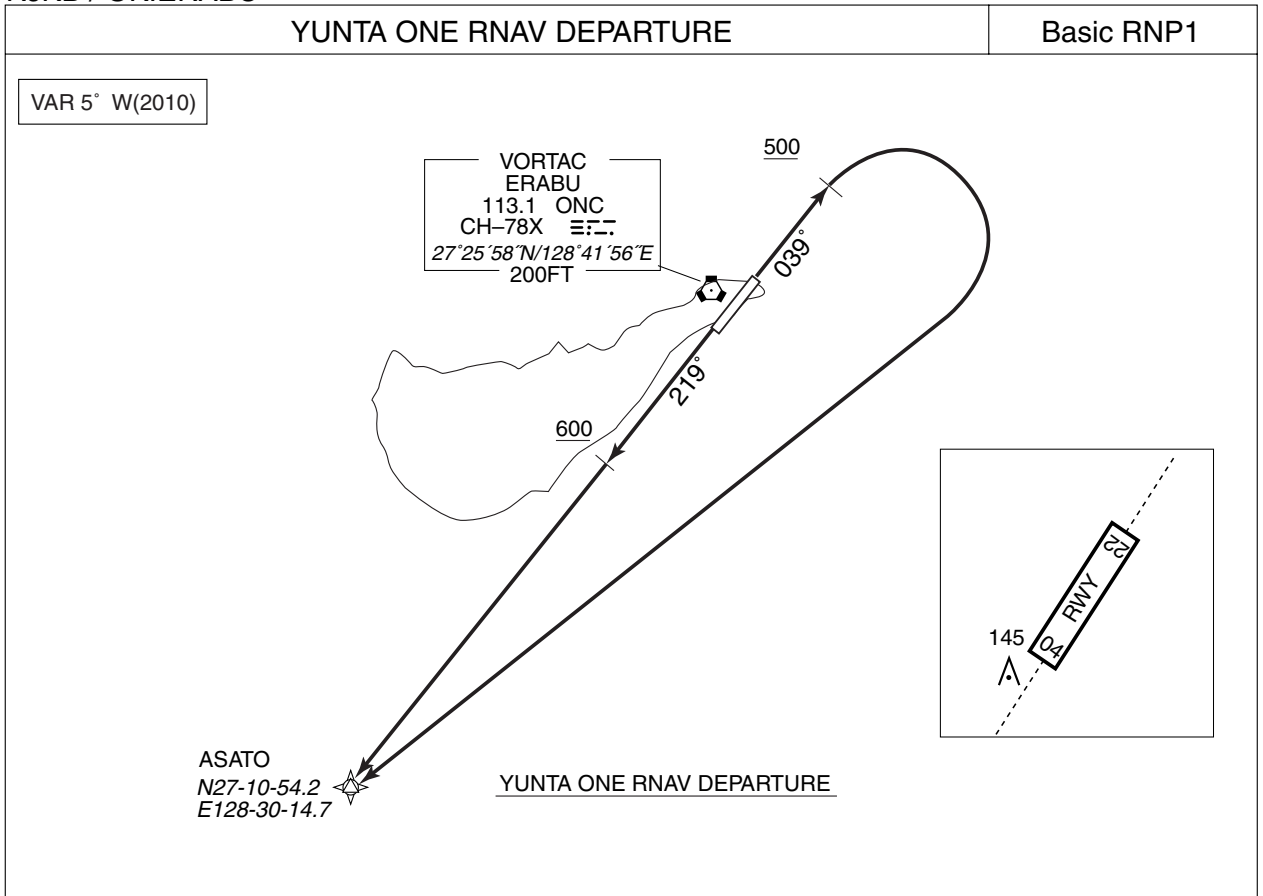
From SONNA to YUWAN.

| Rcmd. Path Terminator | Fix ID (Waypoint Name) | Fly Over | Distance (NM) | MAG Track (TRUE Track) | Turn Direction | Altitude (FT) | Speed Limit (KIAS) | Vertical Angle | Navigation Performance |
|-----------------------|------------------------|----------|---------------|------------------------|----------------|---------------|--------------------|----------------|------------------------|
| IF                    | SONNA                  | —        | —             | —                      | —              | —             | —                  | —              | RNAV1                  |
| TF                    | YUWAN                  | —        | 30.4          | 047° (041.8°)          | —              | —             | —                  | —              | RNAV1                  |

STANDARD DEPARTURE CHART -INSTRUMENT

RJKB / OKIERABU

➔ RNAV SID



YUNTA ONE RNAV DEPARTURE

RWY04: Climb on HDG039° at or above 500FT, turn right direct to ASATO.  
RWY22: Climb on HDG219° at or above 600FT, direct to ASATO.

RWY04

| Rcmd. Path Terminator | Fix ID (Waypoint Name) | Fly Over | Distance (NM) | MAG Track (TRUE Track) | Turn Direction | Altitude (FT) | Speed Limit (KIAS) | Vertical Angle | Navigation Performance |
|-----------------------|------------------------|----------|---------------|------------------------|----------------|---------------|--------------------|----------------|------------------------|
| VA                    | —                      | —        | —             | 039° (034.1°)          | —              | +500          | —                  | —              | Basic RNP1             |
| DF                    | ASATO                  | —        | —             | —                      | R              | —             | —                  | —              | Basic RNP1             |

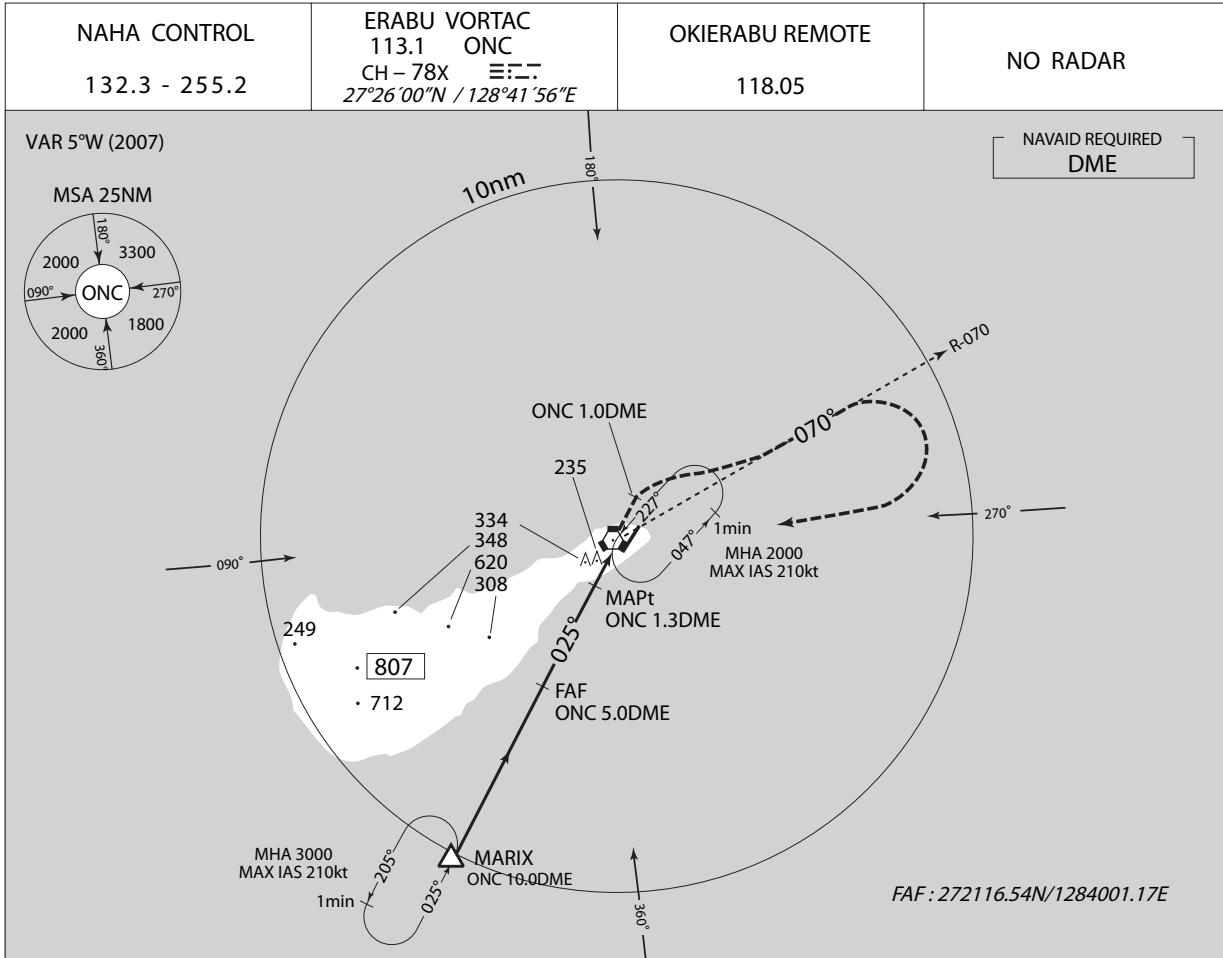
RWY22

| Rcmd. Path Terminator | Fix ID (Waypoint Name) | Fly Over | Distance (NM) | MAG Track (TRUE Track) | Turn Direction | Altitude (FT) | Speed Limit (KIAS) | Vertical Angle | Navigation Performance |
|-----------------------|------------------------|----------|---------------|------------------------|----------------|---------------|--------------------|----------------|------------------------|
| VA                    | —                      | —        | —             | 219° (214.1°)          | —              | +600          | —                  | —              | Basic RNP1             |
| DF                    | ASATO                  | —        | —             | —                      | —              | —             | —                  | —              | Basic RNP1             |

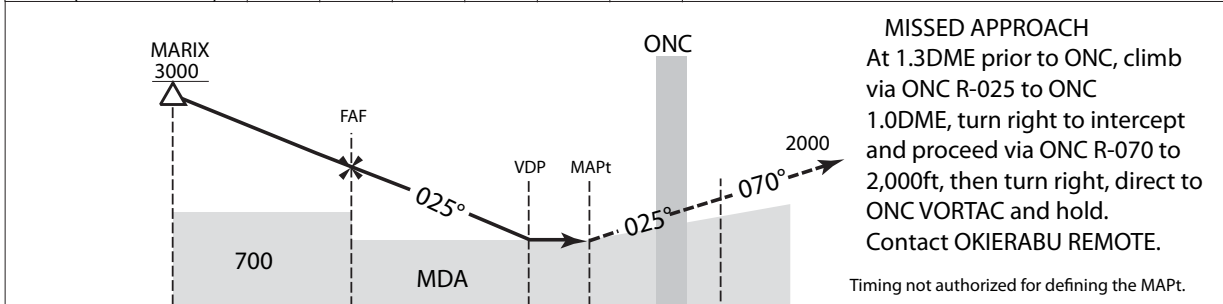
INSTRUMENT APPROACH CHART

RJKB / OKIERABU

VOR Z RWY 04



|                      |      |      |      |     |   |      |
|----------------------|------|------|------|-----|---|------|
| NM to ONC            | FAF  | 4    | 3    | 2   | 1 | MAPt |
| ALT (3.0° APCH Path) | 1654 | 1335 | 1017 | 698 | - | -    |



|             |      |     |     |     |   |     |
|-------------|------|-----|-----|-----|---|-----|
| DME to ONC  | 10.0 | 5.0 | 1.3 | 0.4 | 0 | 1.0 |
| NM to RWY04 | 9.7  | 4.7 | 1.0 | 0   |   |     |

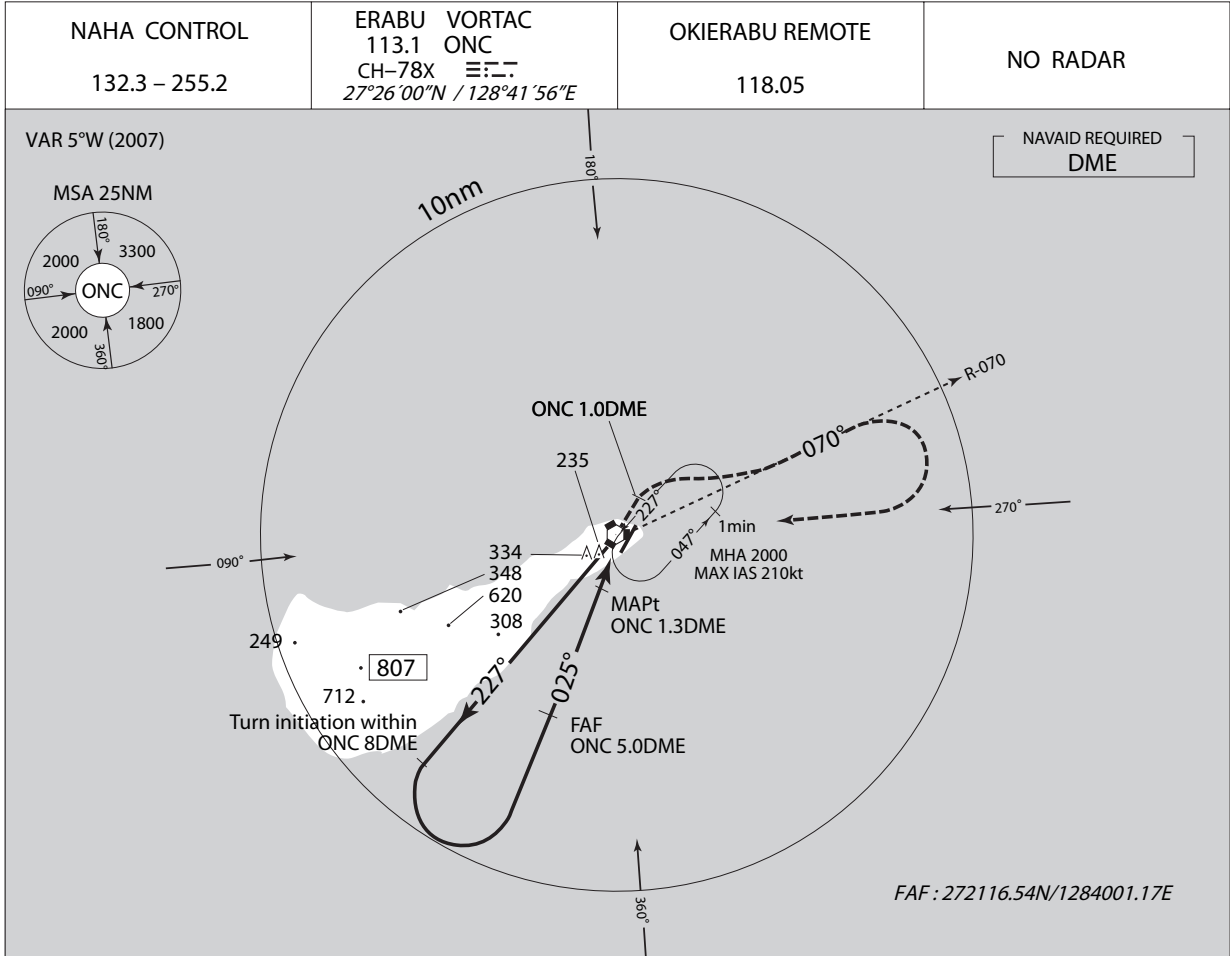
|               |           |              |           |             |      |
|---------------|-----------|--------------|-----------|-------------|------|
| <b>MINIMA</b> |           | THR elev. 98 |           | AD elev. 88 |      |
| CAT           |           |              | CIRCLING  |             |      |
|               | MDA(H)    | CMV          | MDA(H)    | VIS         |      |
| A             | 490 (402) | 1500         | 500 (412) | 1600        |      |
| B             | 510 (422) |              | 540 (452) |             |      |
| C             | 540 (452) | 2000         |           |             | 2400 |
| D             | -         | -            | -         | -           |      |

Circling to East side of RWY only.

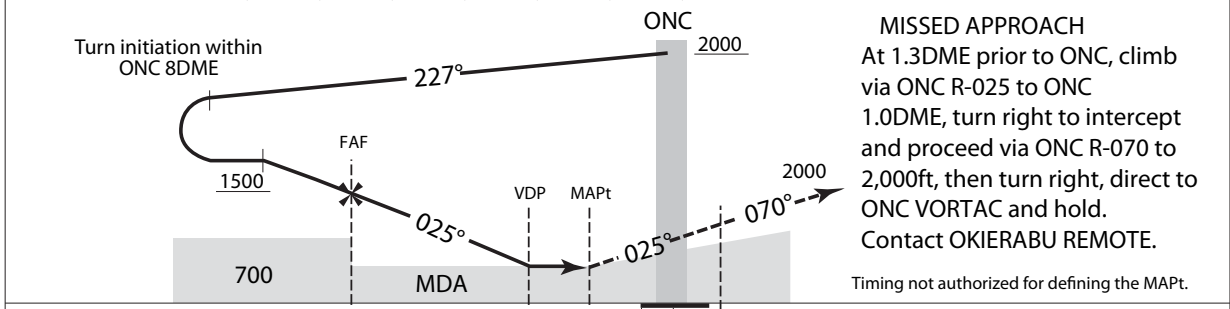
INSTRUMENT APPROACH CHART

RJKB / OKIERABU

VOR Y RWY 04



|                      |      |      |      |     |   |      |
|----------------------|------|------|------|-----|---|------|
| NM to ONC            | FAF  | 4    | 3    | 2   | 1 | MAPt |
| ALT (3.0° APCH Path) | 1654 | 1335 | 1017 | 698 | - | -    |



|             |     |                                     |     |     |   |     |
|-------------|-----|-------------------------------------|-----|-----|---|-----|
| DME to ONC  | 5.0 | CAT A:1.5<br>CAT B:1.6<br>CAT C:1.7 | 1.3 | 0.4 | 0 | 1.0 |
| NM to RWY04 | 4.7 | CAT A:1.2<br>CAT B:1.3<br>CAT C:1.4 | 1.0 | 0   |   |     |

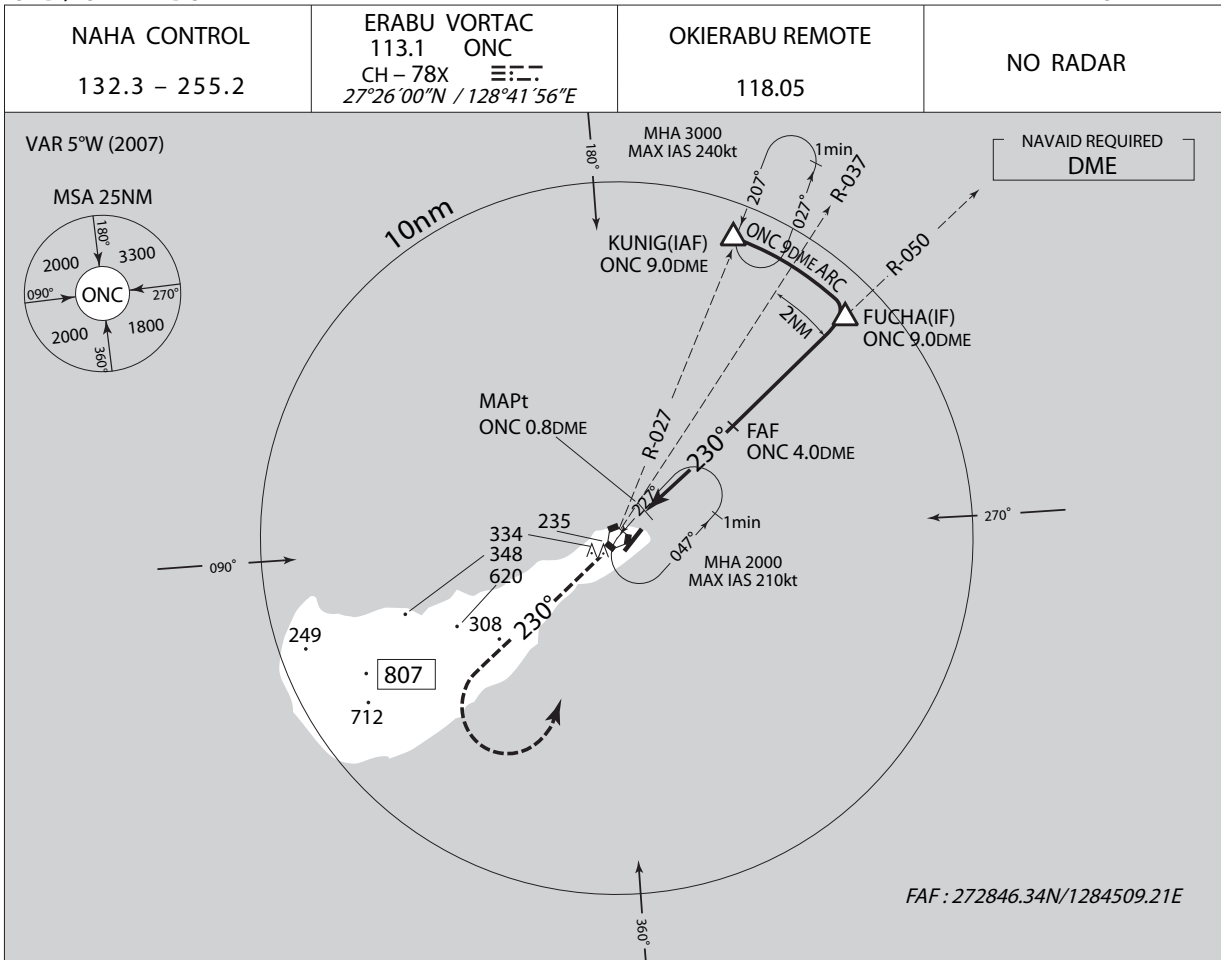
|               |           |              |             |      |
|---------------|-----------|--------------|-------------|------|
| <b>MINIMA</b> |           | THR elev. 98 | AD elev. 88 |      |
| CAT           |           |              | CIRCLING    |      |
|               | MDA(H)    | CMV          | MDA(H)      | VIS  |
| A             | 490 (402) | 1500         | 500 (412)   | 1600 |
| B             | 510 (422) |              | 540 (452)   |      |
| C             | 540 (452) | 2000         |             | 2400 |
| D             | -         | -            | -           | -    |

Circling to East side of RWY only.

INSTRUMENT APPROACH CHART

RJKB / OKIERABU

VOR RWY 22



|                      |      |     |     |      |  |
|----------------------|------|-----|-----|------|--|
| NM to ONC            | MAPt | 2   | 3   | FAF  |  |
| ALT (3.0° APCH Path) | -    | 596 | 915 | 1233 |  |

**MISSED APPROACH**  
At 0.8DME prior ONC, climb via ONC R-230 to 2,000ft, then turn left direct to ONC VORTAC and hold.  
Contact OKIERABU REMOTE.

Timing not authorized for defining the MAPt.

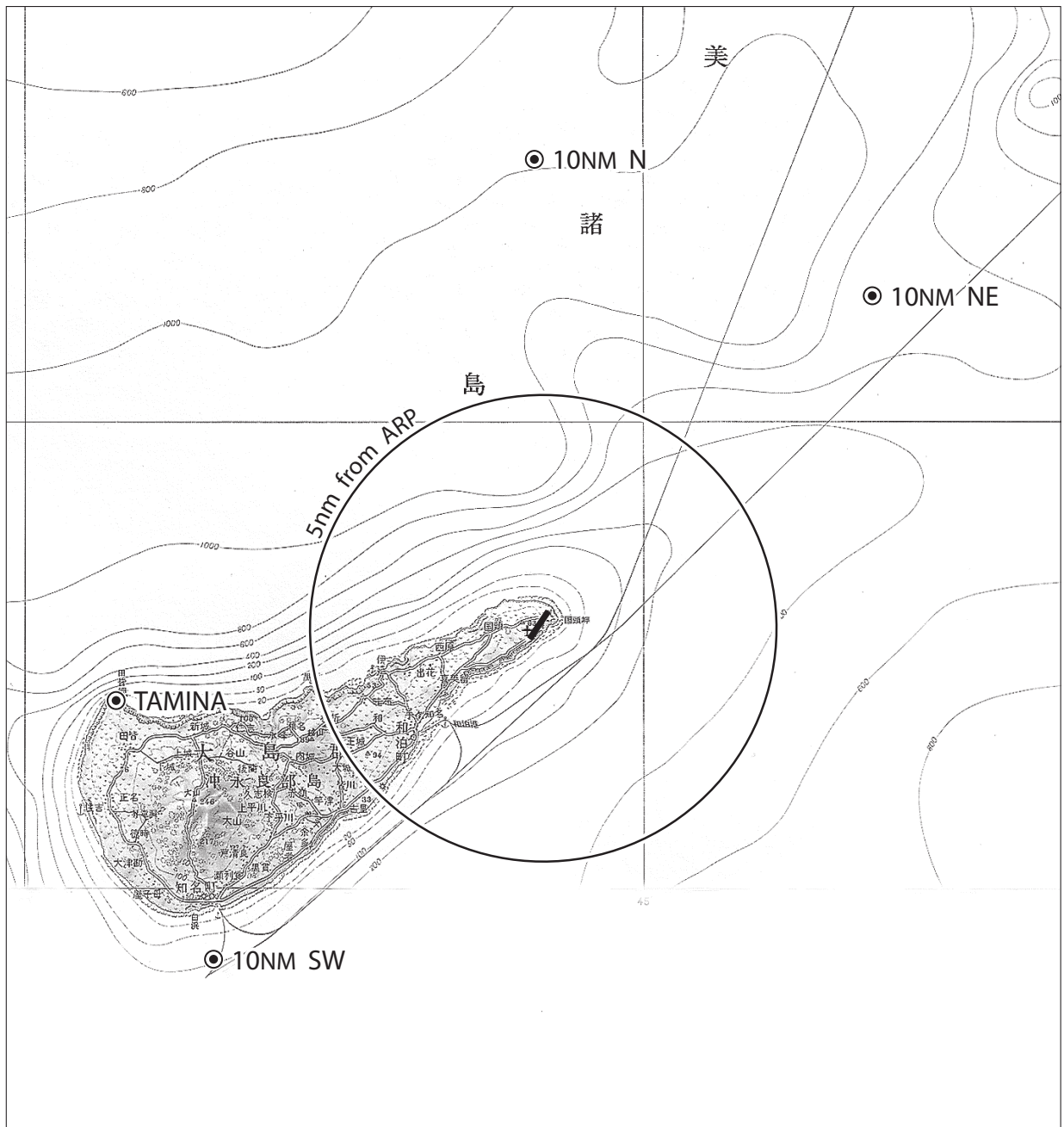
|             |     |     |     |     |                                     |
|-------------|-----|-----|-----|-----|-------------------------------------|
| DME to ONC  | 0   | 0.8 | 4.0 | 9.0 | CAT A:1.5<br>CAT B:1.6<br>CAT C:1.7 |
| NM to RWY22 | 0.3 |     | 3.5 | 8.5 | CAT A:1.0<br>CAT B:1.1<br>CAT C:1.2 |

|               |              |             |                 |      |
|---------------|--------------|-------------|-----------------|------|
| <b>MINIMA</b> | THR elev. 79 | AD elev. 88 | <b>CIRCLING</b> |      |
| CAT           | MDA(H)       | 1500        | MDA(H)          | VIS  |
|               | 420 (341)    |             | 500 (412)       | 1600 |
| B             | 460 (381)    | 1800        | 540 (452)       | 2400 |
| C             | 490 (411)    |             | -               | -    |
| D             | -            | -           | -               | -    |

Circling to East side of RWY only.

RJKB / OKIERABU

Visual REP



| Call sign     | BRG / DIST from ARP | Remarks            |
|---------------|---------------------|--------------------|
| 10NM N        | 000°/ 10NM          | 海上<br>Over the sea |
| 10NM NE       | 045°/ 10NM          | 海上<br>Over the sea |
| 10NM SW       | 225°/ 10NM          | 海上<br>Over the sea |
| 田 皆<br>Tamina | 260°/9.5NM          | 岬<br>Cape          |

RJKB / OKIERABU

LDG CHART

