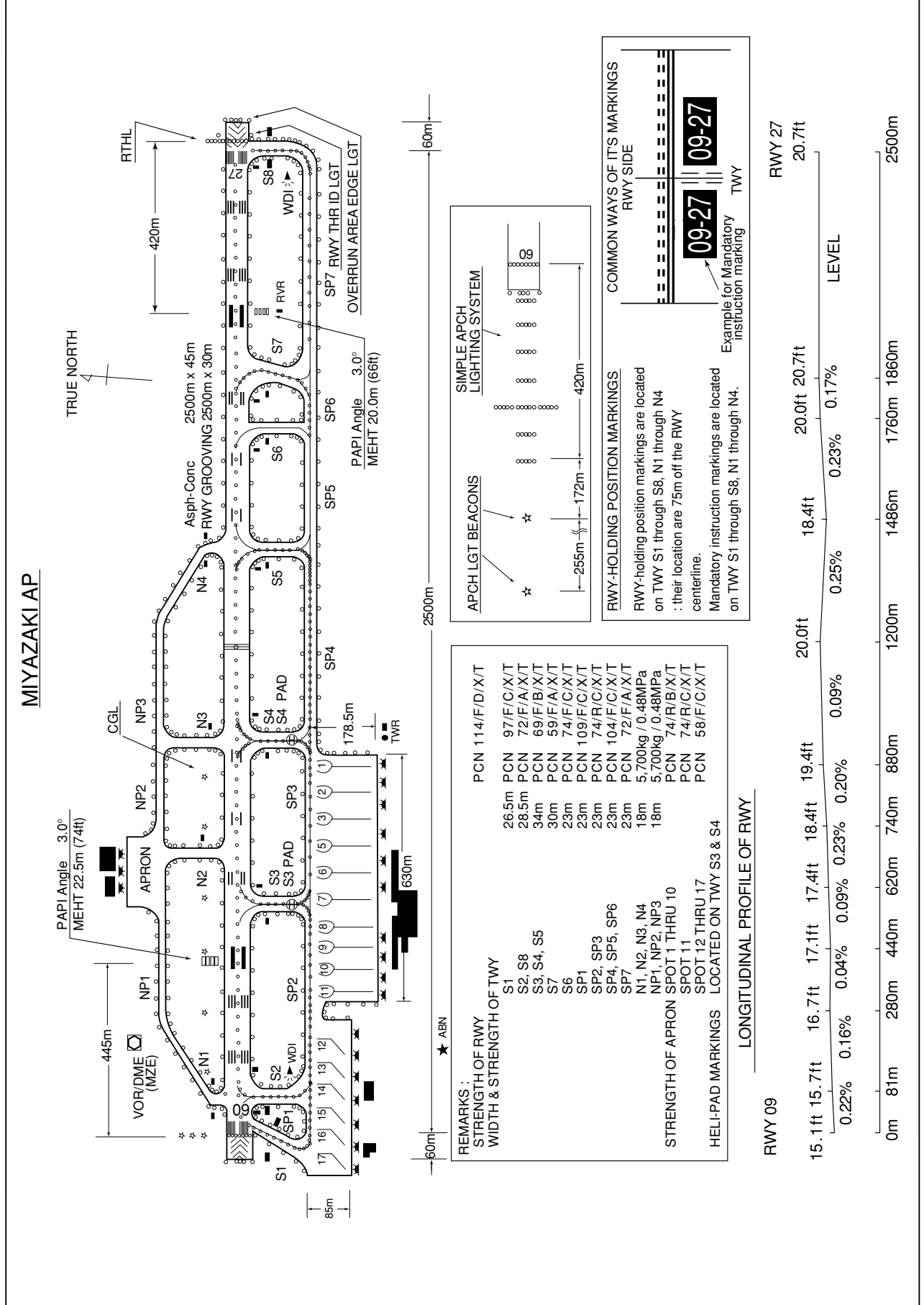


RJFM / MIYAZAKI

AD CHART



STANDARD DEPARTURE CHART - INSTRUMENT

RJFM / MIYAZAKI

SID

OITA ONE DEPARTURE

RWY 27 : Climb via MZE R275 to 6.0DME, turn right HDG 061° to intercept and proceed via MZE R016 to TAE VOR/DME  
Cross MZE R345 at or above 6000FT.

RWY 09 : Climb via MZE R091 to 8.0DME, turn left HDG 331° to intercept and proceed via MZE R016 to TAE VOR/DME.  
Cross MZE R040 at or above 6000FT.

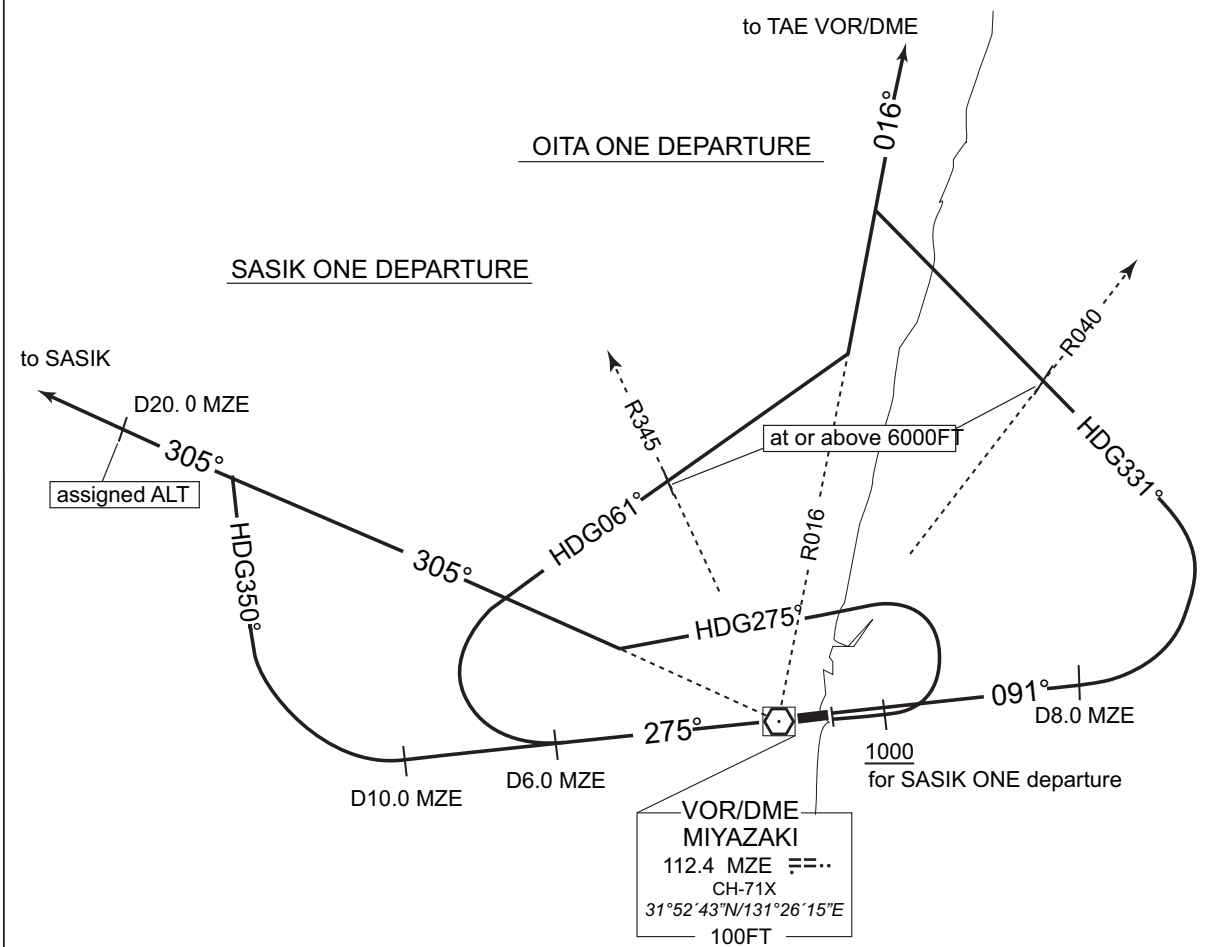
Note RWY27 : 5.0% climb gradient required up to 5000FT.  
OBST ALT 1637FT located at 8.3NM 285° from end of RWY27.

SASIK ONE DEPARTURE

RWY 27 : Climb via MZE R275 to 10.0DME, turn right HDG 350°.....,  
RWY 09 : Climb RWY HDG to 1000FT or above, turn left HDG 275°.....,  
to intercept and proceed via MZE R305 to SASIK.  
Cross MZE 20.0DME at assigned altitude.

Note RWY27 : 5.0% climb gradient required up to 5000FT.  
OBST ALT 1848FT located at 11.6NM 269° from end of RWY27.

RWY09 : 5.0% climb gradient required up to 1000FT.  
SASIK : MZE MRA 10000FT.



STANDARD DEPARTURE CHART - INSTRUMENT

RJFM / MIYAZAKI

SID

MIYAZAKI REVERSAL ONE DEPARTURE

RWY 27 : Climb via MZE R275 to 10.0DME, turn right,....

RWY 09 : Turn right,climb via MZE R138 to 12.0DME, turn left,....  
....proceed to MZE VOR/DME.

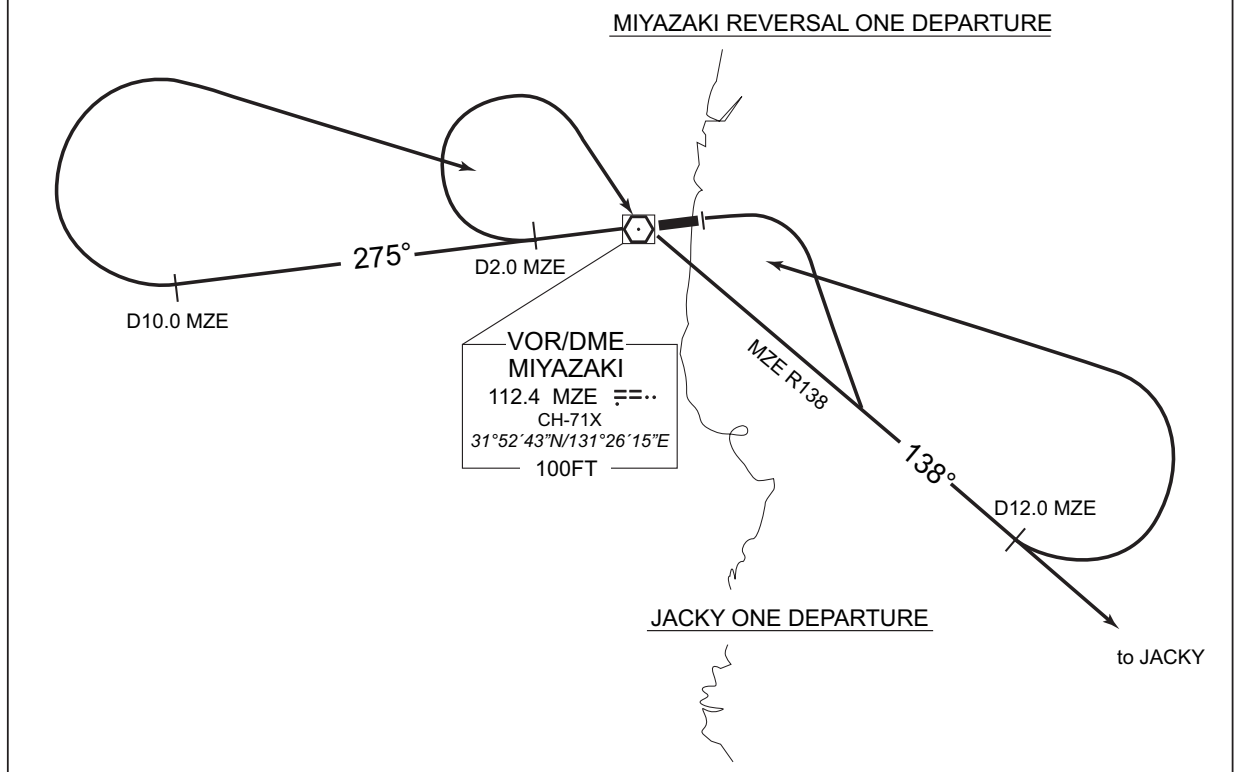
Note RWY27 : 5.0% climb gradient required up to 5000FT.  
OBST ALT 1848FT located at 11.6NM 269° from end of RWY27.

JACKY ONE DEPARTURE

RWY 27 : Climb RWY HDG to MZE 2.0DME, turn right proceed to MZE VOR/DME, then,....

RWY 09 : Turn right,....  
....climb via MZE R138 to JACKY.

Note RWY27 : 5.0% climb gradient required up to 500FT.  
OBST ALT 395FT located at 3.1NM 281° from end of RWY27.



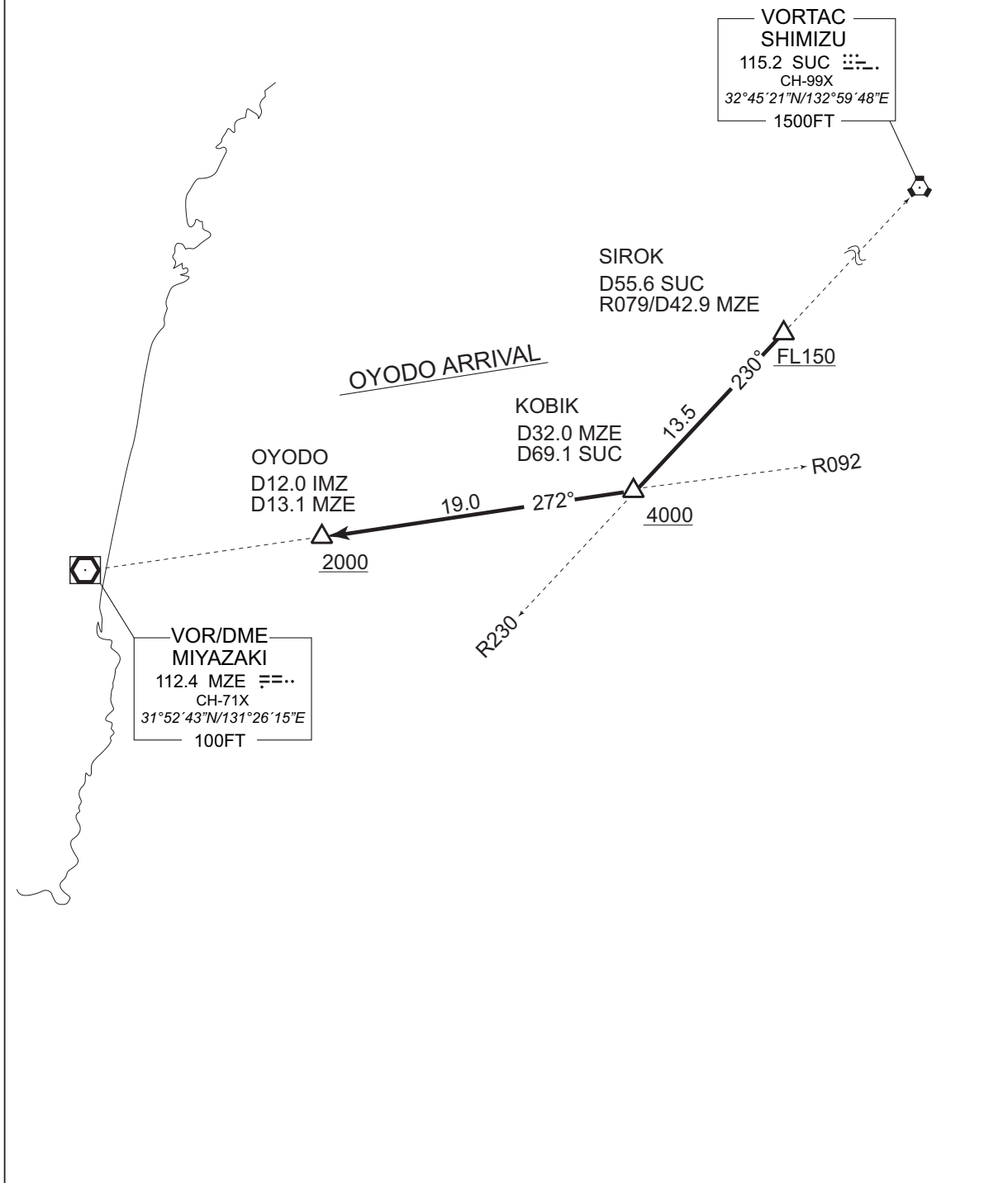
STANDARD ARRIVAL CHART - INSTRUMENT

RJFM / MIYAZAKI

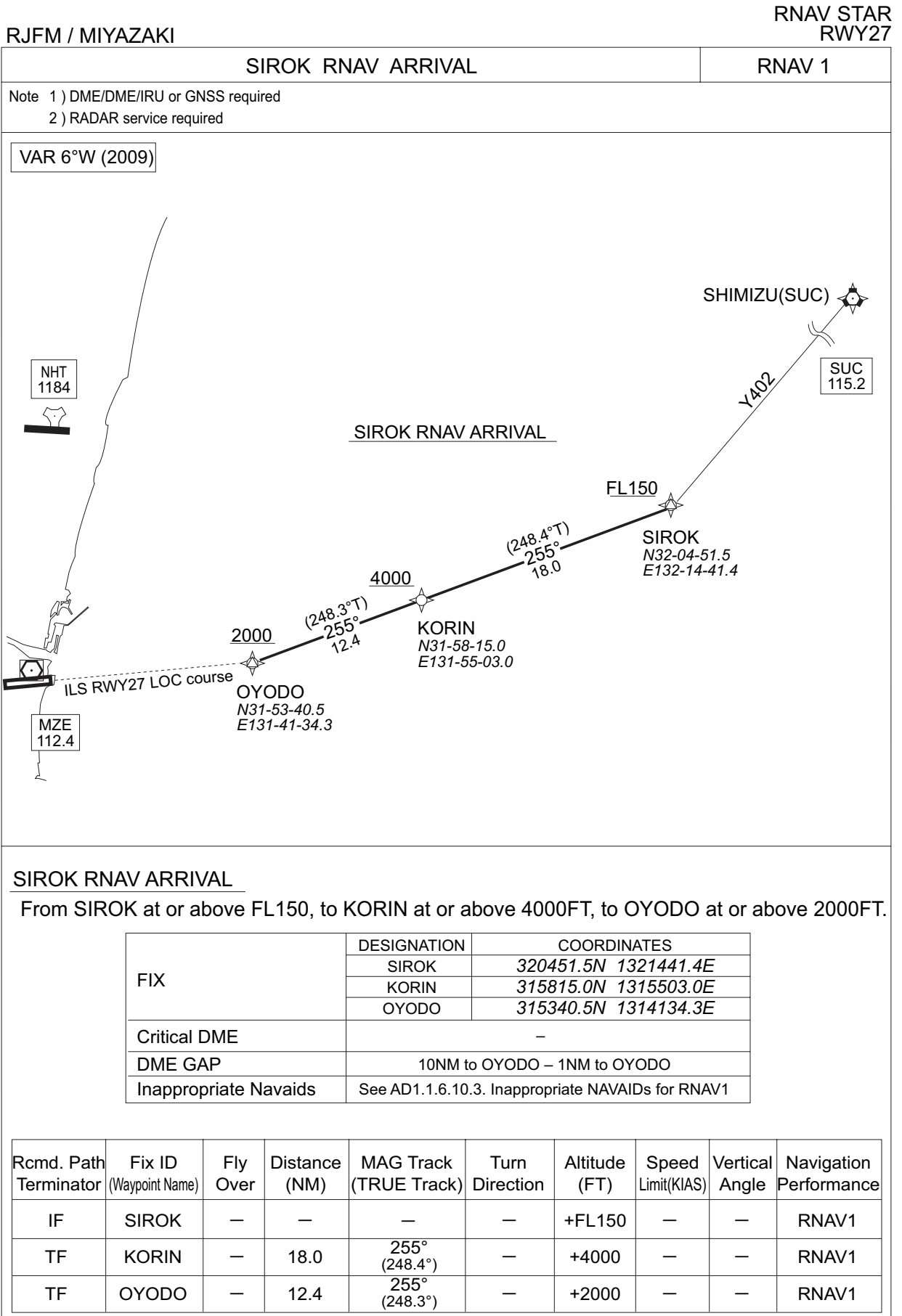
STAR

OYODO ARRIVAL

From over SIROK, proceed via SUC R230 to KOBIK, via MZE R092 to OYODO.  
Cross SIROK at or above FL150, cross KOBIK at or above 4000FT, cross OYODO at or above 2000FT.



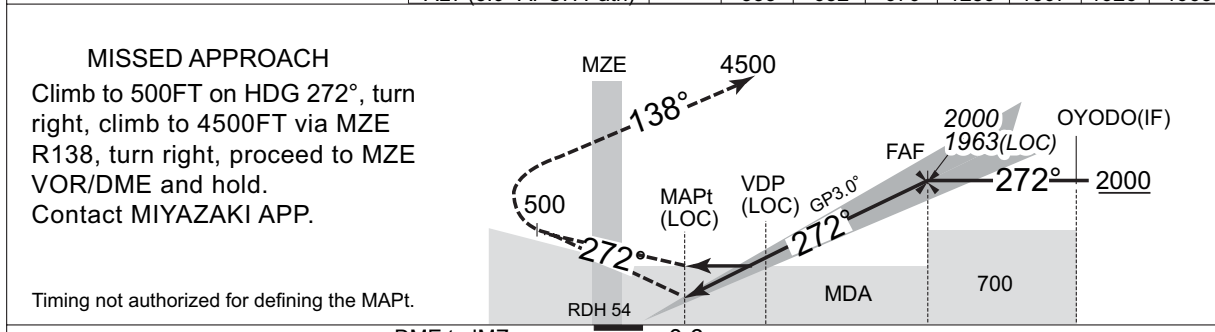
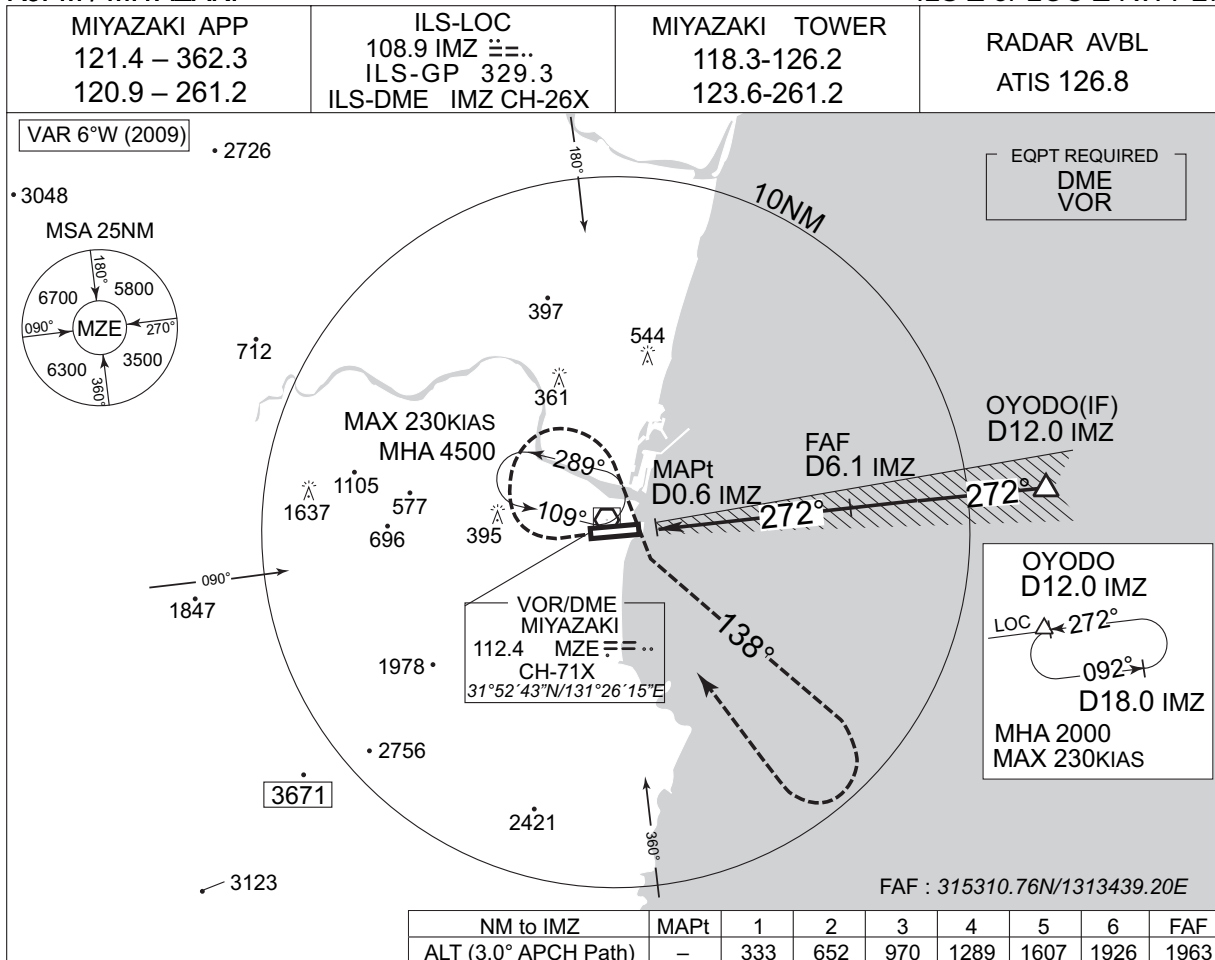
STANDARD ARRIVAL CHART - INSTRUMENT



INSTRUMENT APPROACH CHART

RJFM / MIYAZAKI

ILS Z or LOC Z RWY 27



DME to IMZ	0	0.6	0.8	6.1	12.0
NM to THR	0	0.5	0.6	5.9	11.9

Missed APCH climb gradient MNM 4.0%

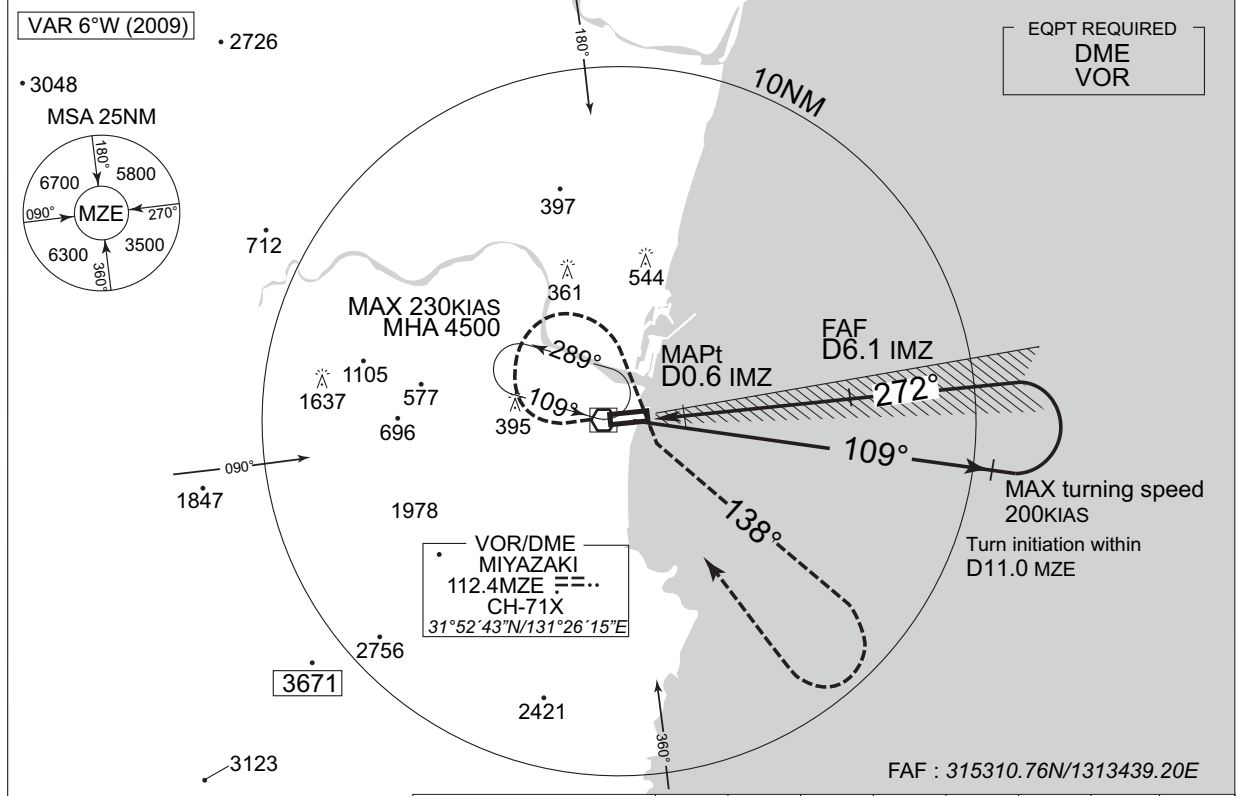
<b>MINIMA</b>		THR elev. 21	AD elev. 19			
CAT	CAT I		LOC		CIRCLING	
	DA(H)	RVR/CMV	MDA(H)	RVR/CMV	MDA(H)	VIS
A	221 (200)	1000	270 (251)	1500	520 (501)	1600
B				650 (631)	3200	
C						
D						

MINIMA with Missed APCH climb gradient of 2.5% are not established.

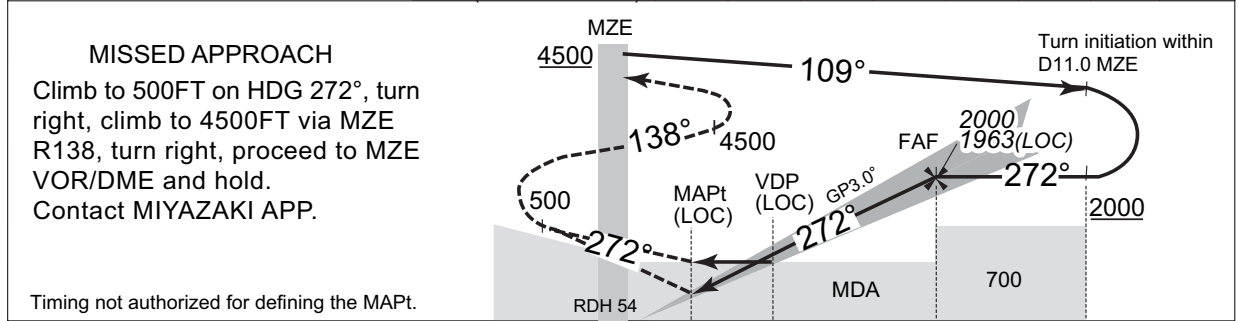
INSTRUMENT APPROACH CHART

RJFM / MIYAZAKI ILS Y or LOC Y RWY 27

MIYAZAKI APP 121.4 – 362.3 120.9 – 261.2	ILS-LOC 108.9 IMZ ≡=.. ILS-GP 329.3 ILS-DME IMZ CH-26X	MIYAZAKI TOWER 118.3 - 126.2 123.6 - 261.2	RADAR AVBL  ATIS 126.8
--	---	--	------------------------------



NM to IMZ	MAPt	1	2	3	4	5	6	FAF
ALT (3.0° APCH Path)	-	333	652	970	1289	1607	1926	1963



DME to IMZ	0	0.6	0.8	6.1	12.0
NM to THR	0	0.5	0.6	5.9	11.9

Missed APCH climb gradient MNM 4.0%

MINIMA		THR elev. 21		AD elev. 19		
CAT	CAT I		LOC		CIRCLING	
	DA(H)	RVR/CMV	MDA(H)	RVR/CMV	MDA(H)	VIS
A	221 (200)	1000	270 (251)	1500	520 (501)	1600
B						
C				1600	650 (631)	2400
D				1800		3200

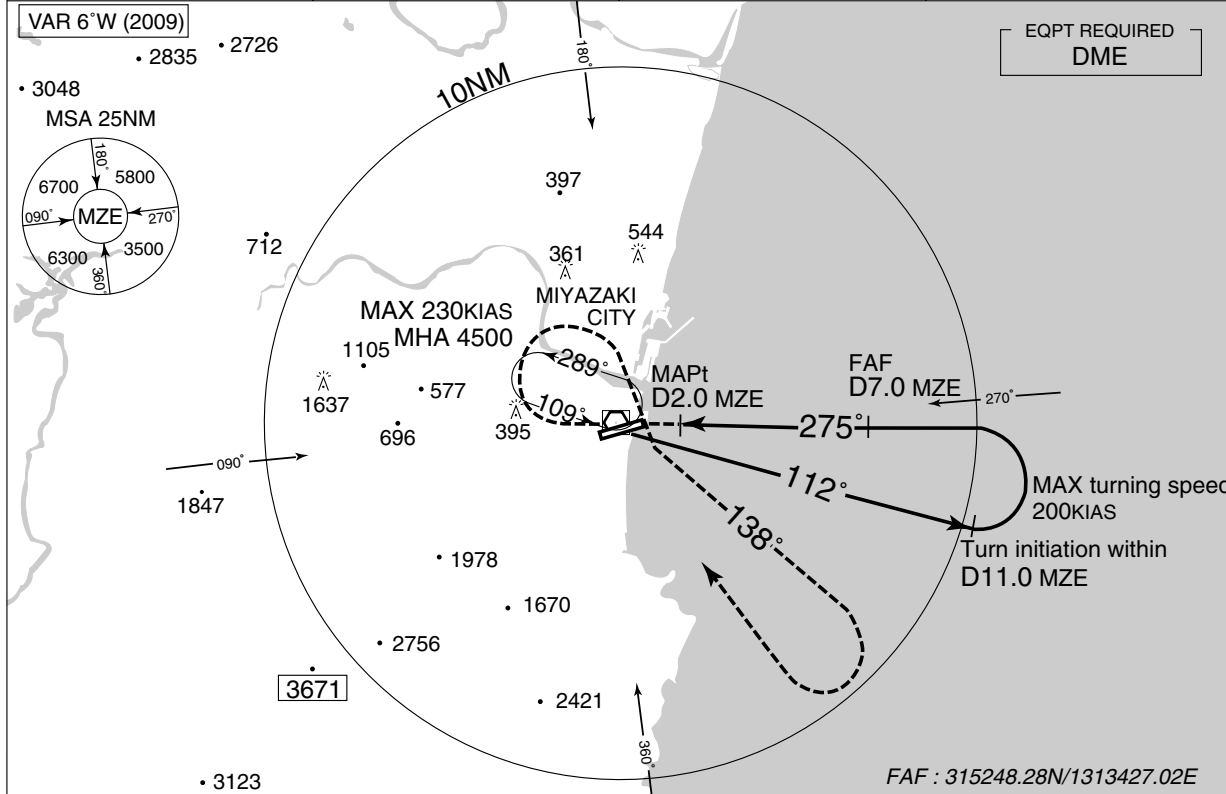
MINIMA with Missed APCH climb gradient of 2.5% are not established.

INSTRUMENT APPROACH CHART

RJFM / MIYAZAKI

VOR RWY 27

MIYAZAKI APP 121.4 – 362.3 120.9 – 261.2	MIYAZAKI VOR/DME 112.4 MZE CH-71X 31°52'43"N/131°26'15"E	MIYAZAKI TOWER 118.3 - 126.2 123.6 - 261.2	RADAR AVBL ATIS 126.8
--	---	--	--------------------------

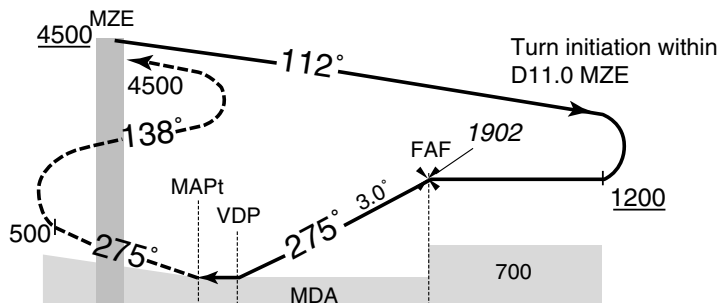


NM to MZE	MAPt	3	4	5	6	FAF
ALT (3.0° APCH Path)	-	633	951	1270	1588	1902

MISSED APPROACH

Climb to 500FT on HDG 275°, turn right, climb to 4500FT via MZE R138, turn right, proceed to MZE VOR/DME and hold.  
Contact MIYAZAKI APP.

Timing not authorized for defining the MAPt.



DME to MZE	0	2.0	2.4	7.0
NM to THR	0	0.8	1.2	5.8

MINIMA		THR elev. 21	AD elev. 19				
CAT			CIRCLING				
	MDA(H)	RVR/CMV	MDA(H)	VIS			
A	440 (421)	1500	520 (501)	1600			
B							
C					1800	650 (631)	2400
D					2000		3200

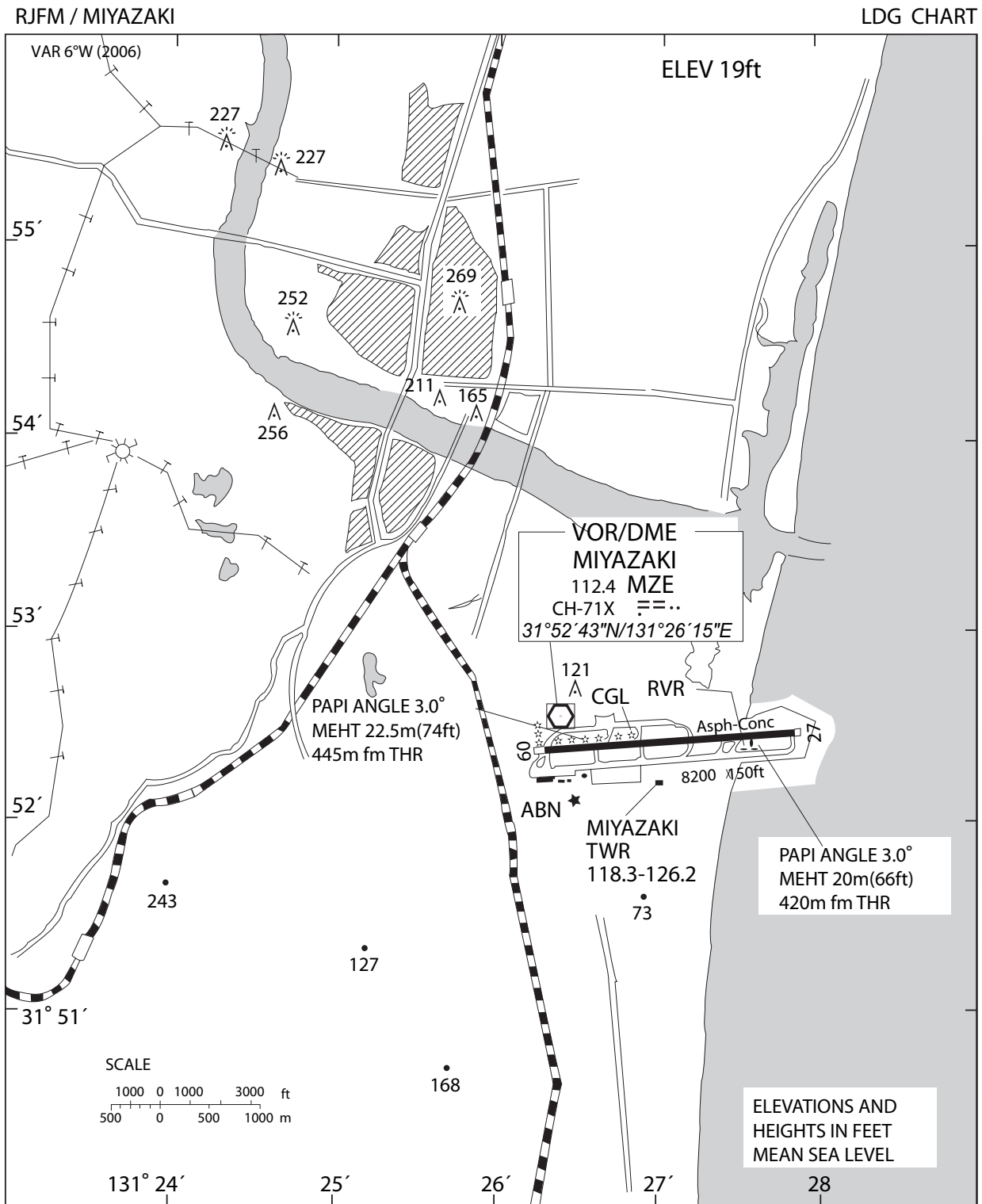


RJFM / MIYAZAKI

Visual REP



Call sign	BRG / DIST from ARP	Remarks
有 田 Arita	318°/6.5NM	東九州自動車道大淀川橋 Bridge
相 生 Aioi	336°/5.3NM	宮崎西環状線相生橋 Bridge
塩 路 Shioji	022°/5.7NM	一ツ葉有料道路一ツ葉P A Parking Area
一ツ葉 Hitotsuba	023°/3.3NM	サンビーチ 一ツ葉 Beach
加 江 田 Kaeda	182°/3.7NM	加江田川河口 River-mouth
白 浜 Shirahama	166°/5.8NM	戸崎鼻先端のホテル Hotel
田 野 Tano	251°/8.1NM	宮崎自動車道田野 I C Interchange



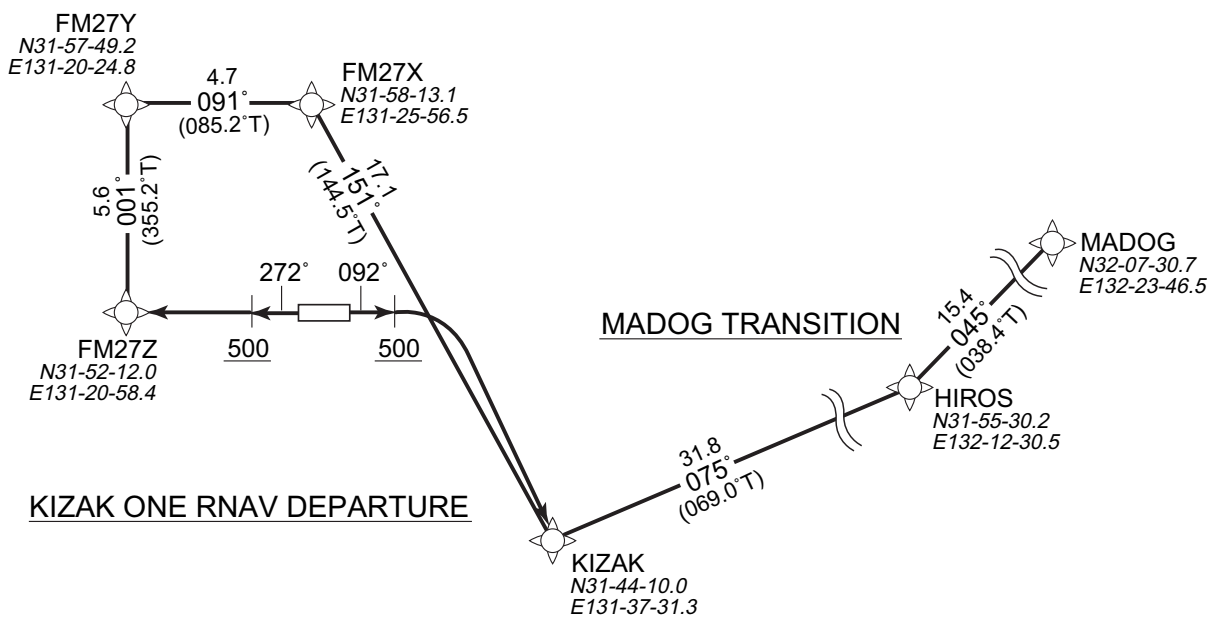
STANDARD DEPARTURE CHART - INSTRUMENT

RNAV SID and TRANSITION

RJFM / MIYAZAKI

KIZAK ONE RNAV DEPARTURE		RNAV1
Note 1 ) DME/DME/IRU or GNSS required. ※The aircraft equipped with only DME/DME/IRU must be able to update its position without delay at the starting point of take-off roll. 2 ) RADAR service required.	Critical DME	RWY09 MZE, TGE : 4.0NM to KIZAK - KIZAK RWY27 TGE : 4.0NM to KIZAK - KIZAK
	DME GAP	RWY09 : DER - 4.0NM to KIZAK RWY27 : DER - 4.0NM to KIZAK
	Inappropriate Navaids	See AD1.1.6.10.3. Inappropriate NAVAIDs for RNAV1

VAR 6° W(2010)



Note RWY09 : 5.0% climb gradient required up to 500FT.  
RWY27 : 7.0% climb gradient required up to 900FT.

KIZAK ONE RNAV DEPARTURE

RWY27 : Climb on HDG272° at or above 500FT, direct to FM27Z, to FM27Y, to FM27X, to KIZAK.  
 RWY09 : Climb on HDG092° at or above 500FT, direct to KIZAK.

MADOG TRANSITION

From KIZAK, to HIROS, to MADOG.

Note RWY09: 5.0% climb gradient required up to 500FT.  
RWY27: 7.0% climb gradient required up to 900FT.

STANDARD DEPARTURE CHART - INSTRUMENT

RJFM / MIYAZAKI

RNAV SID and TRANSITION

KIZAK ONE RNAV DEPARTURE

**RWY27**

Rcmd. Path Terminator	Fix ID (Waypoint Name)	Fly Over	Distance (NM)	MAG Track (TRUE Track)	Turn Direction	Altitude (FT)	Speed Limit (KIAS)	Vertical Angle	Navigation Performance
VA	—	—	—	272° (265.2°)	—	500	—	—	RNAV1
DF	FM27Z	—	—	—	—	—	—	—	RNAV1
TF	FM27Y	—	5.6	001° (355.2°)	—	—	—	—	RNAV1
TF	FM27X	—	4.7	091° (085.2°)	—	—	—	—	RNAV1
TF	KIZAK	—	17.1	151° (144.5°)	—	—	—	—	RNAV1

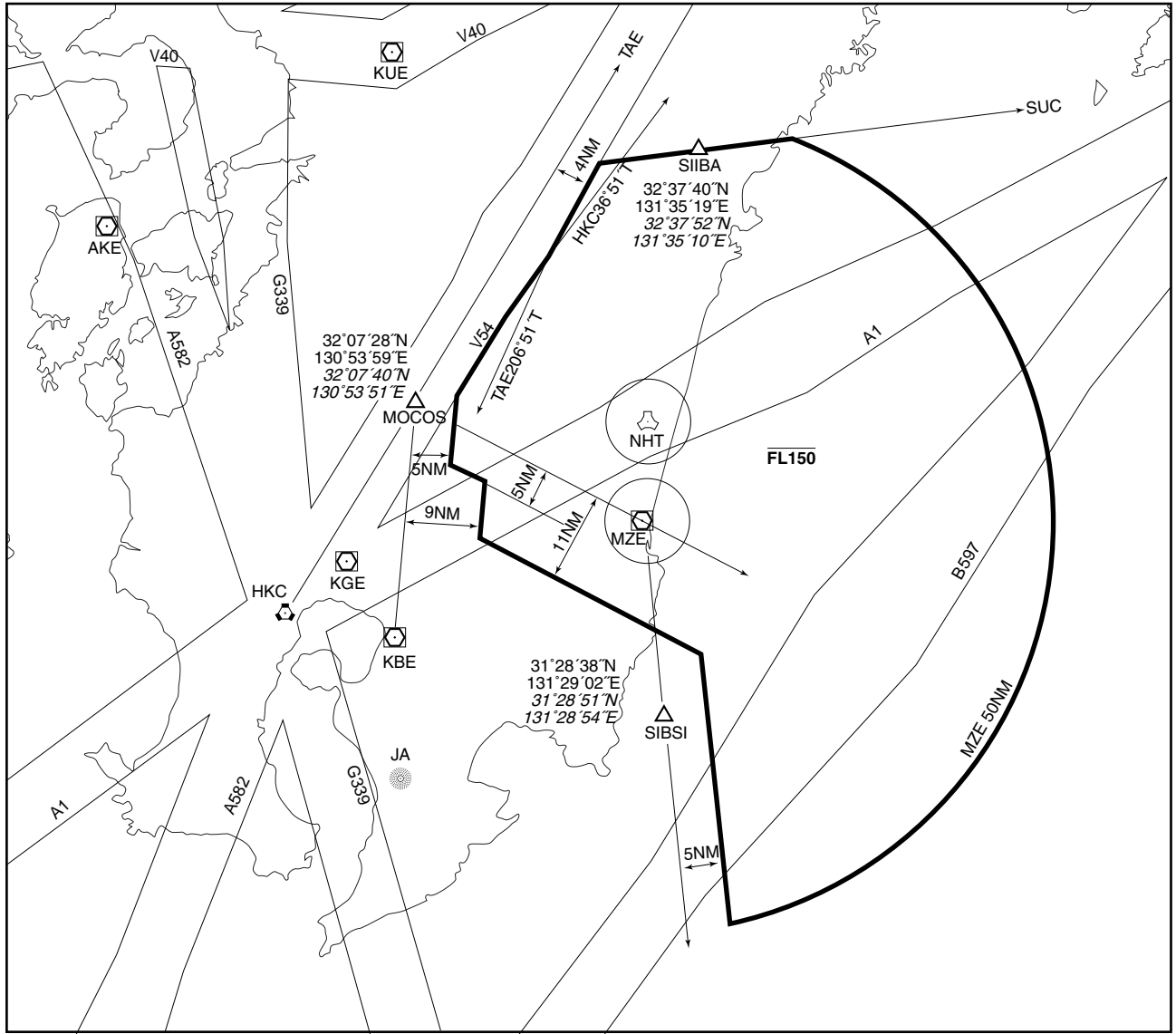
**RWY09**

Rcmd. Path Terminator	Fix ID (Waypoint Name)	Fly Over	Distance (NM)	MAG Track (TRUE Track)	Turn Direction	Altitude (FT)	Speed Limit (KIAS)	Vertical Angle	Navigation Performance
VA	—	—	—	092° (085.2°)	—	500	—	—	RNAV1
DF	KIZAK	—	—	—	R	—	—	—	RNAV1

MADOG TRANSITION

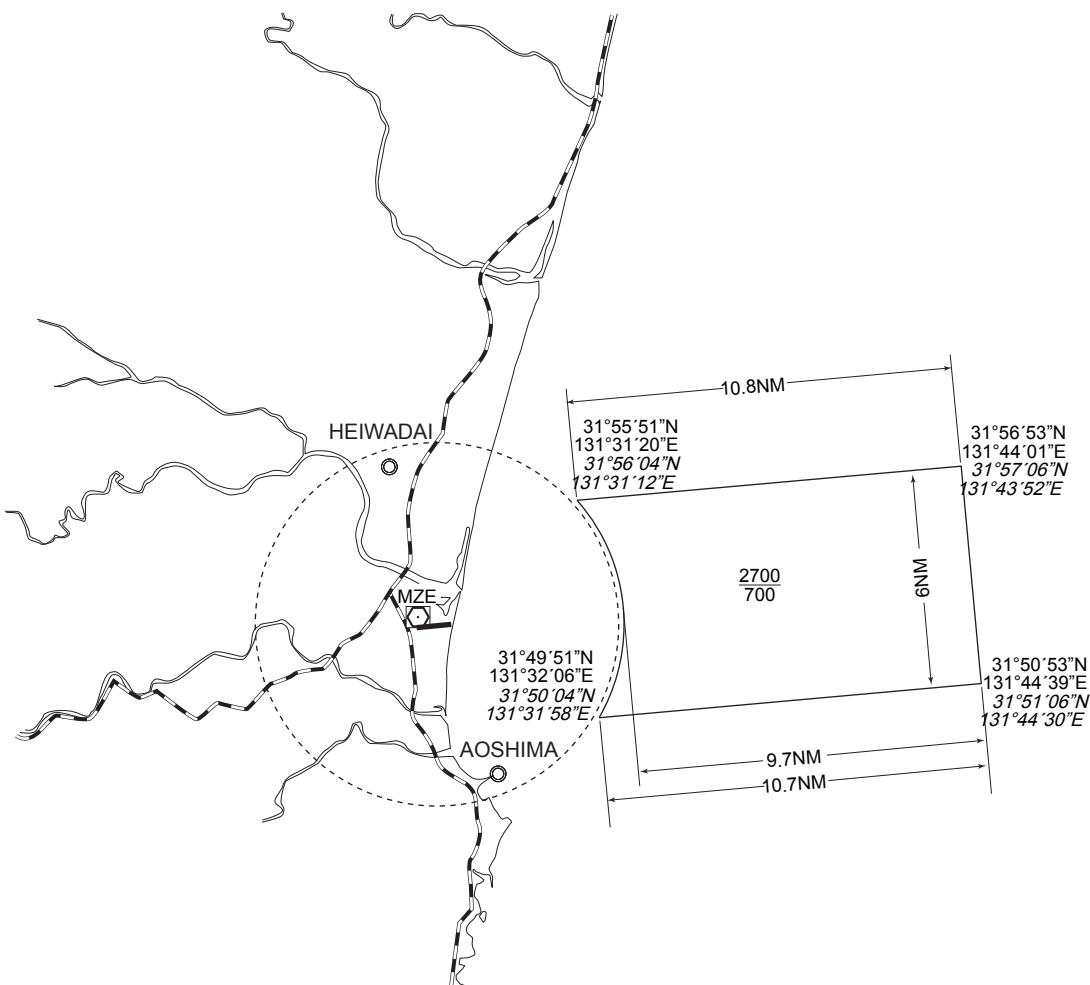
Rcmd. Path Terminator	Fix ID (Waypoint Name)	Fly Over	Distance (NM)	MAG Track (TRUE Track)	Turn Direction	Altitude (FT)	Speed Limit (KIAS)	Vertical Angle	Navigation Performance
IF	KIZAK	—	—	—	—	—	—	—	RNAV1
TF	HIROS	—	31.8	075° (069.0°)	—	—	—	—	RNAV1
TF	MADOG	—	15.4	045° (038.4°)	—	—	—	—	RNAV1

宮崎進入管制区  
Miyazaki Approach Control Area

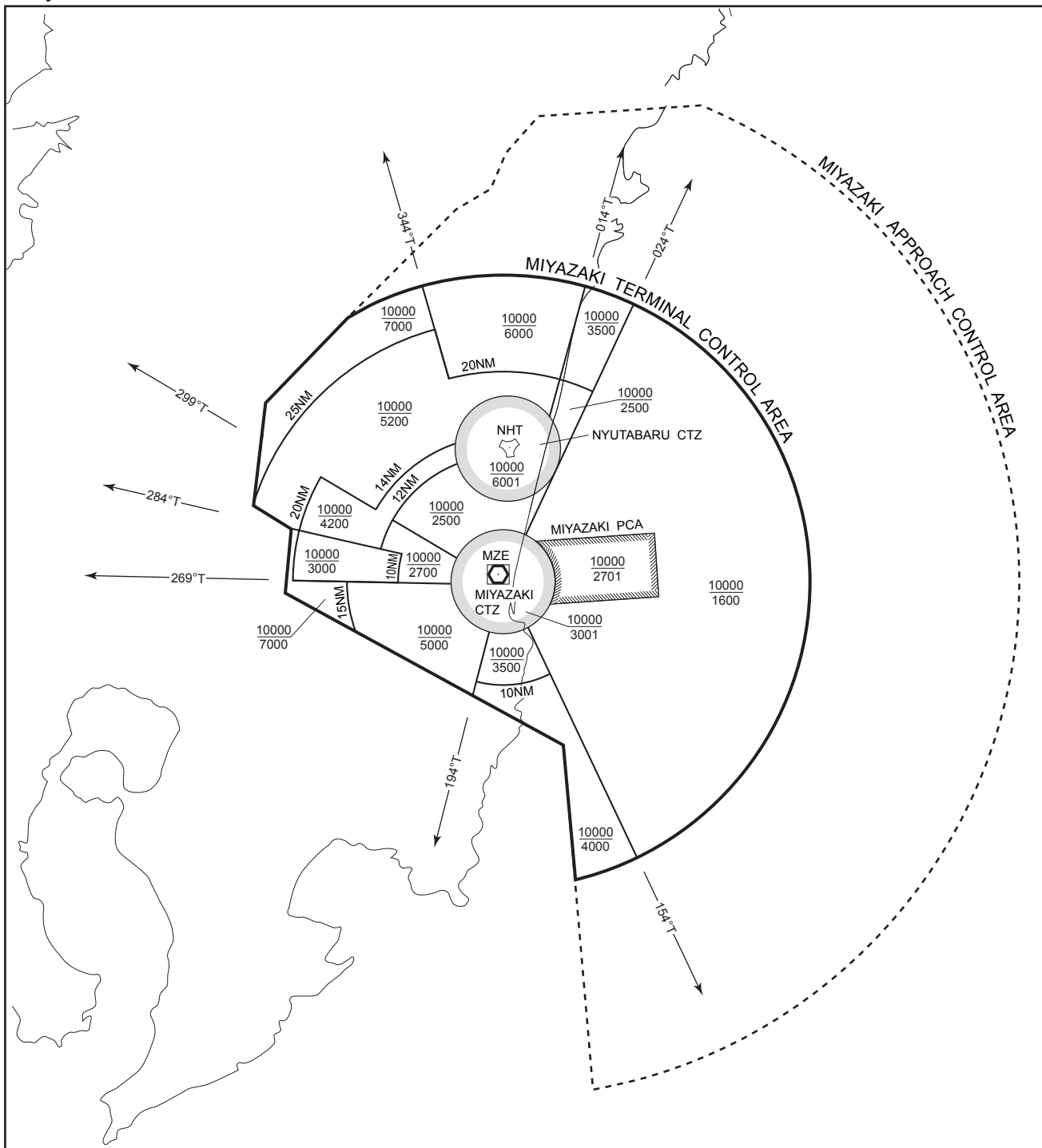


宮崎特別管制区  
Miyazaki Positive Control Area

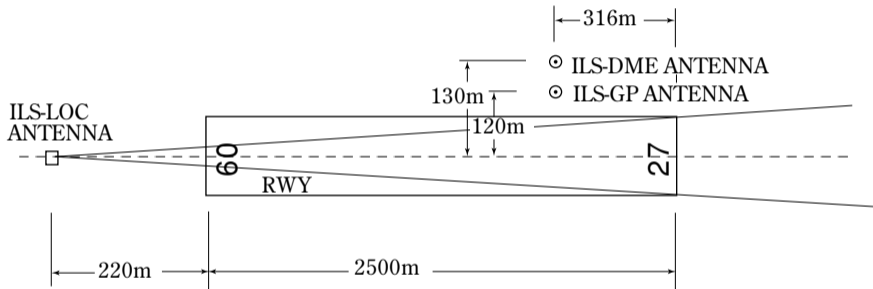
NAME	LATERAL LIMITS	UPPER LIMIT (AMSL)	UNIT PROVIDING SERVICE	REMARKS
		LOWER LIMIT (AMSL) M(ft)		
1	2	3	4	5
宮崎 MIYAZAKI	下記に示される区域 The area shown below		Primary Miyazaki APP 121.4 120.9 362.3  Secondary Miyazaki TWR 118.3 261.2	当該空域を飛行しようとする航空機は、宮崎アプローチ又は宮崎タワーに連絡し、コールサイン、現在位置、高度及び意図を通報し指示を受けること。 Pilot of aircraft operating in this area shall contact Miyazaki Approach or Miyazaki Tower for ATC instructions giving informations on aircraft identification, positions, altitude and pilot's intentions.



宮崎ターミナルコントロールエリア  
Miyazaki Terminal Control Area



# MIYAZAKI AP



REMARKS: 1. LOC beam BRG (MAG) 272°  
2. HGT of ILS REF datum 16.5m (54ft)  
3. GP Angle 3.0°  
4. ELEV of ILS-DME 10.3m