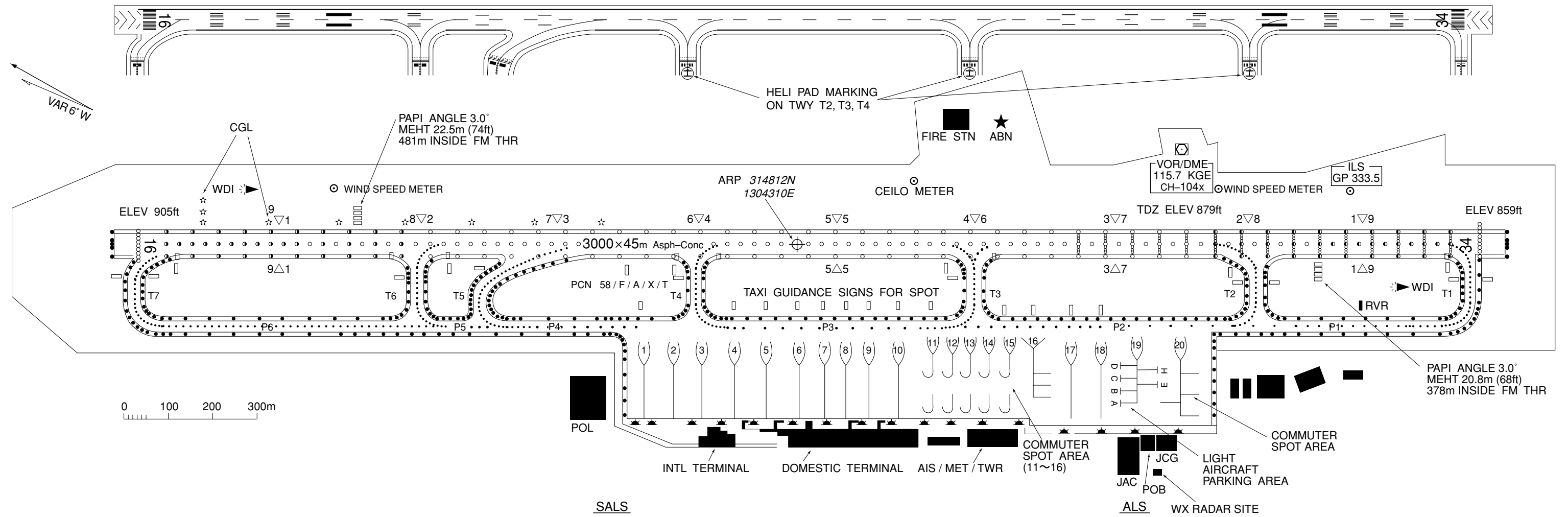
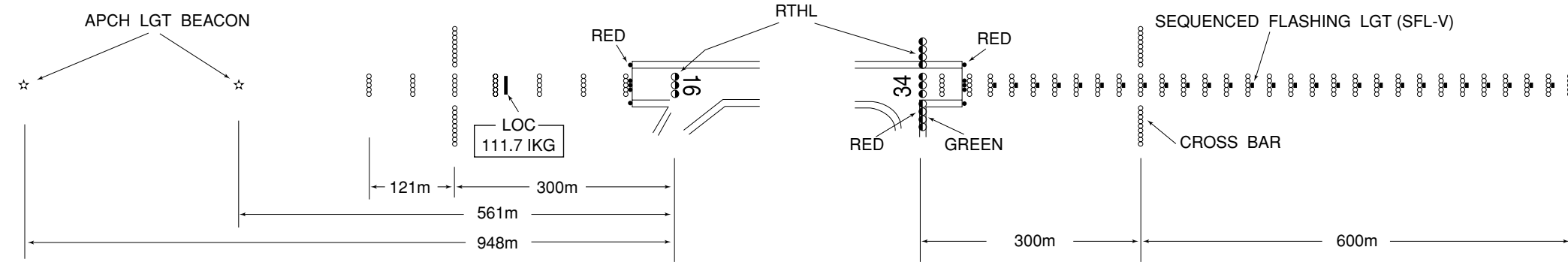


KAGOSHIMA AP
ELEV 271.9m(892ft) ARP

MARKING AIDS

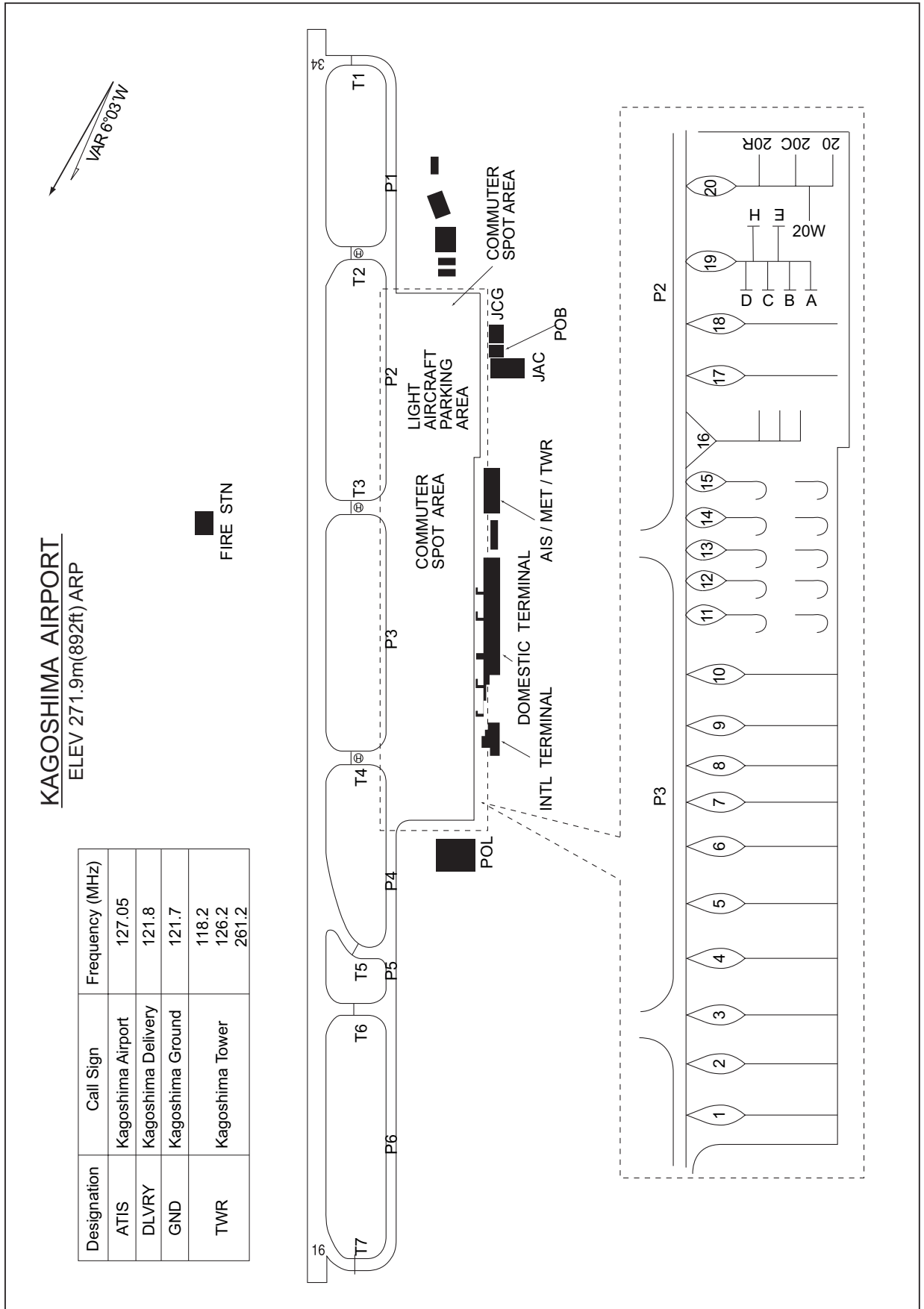


SALS



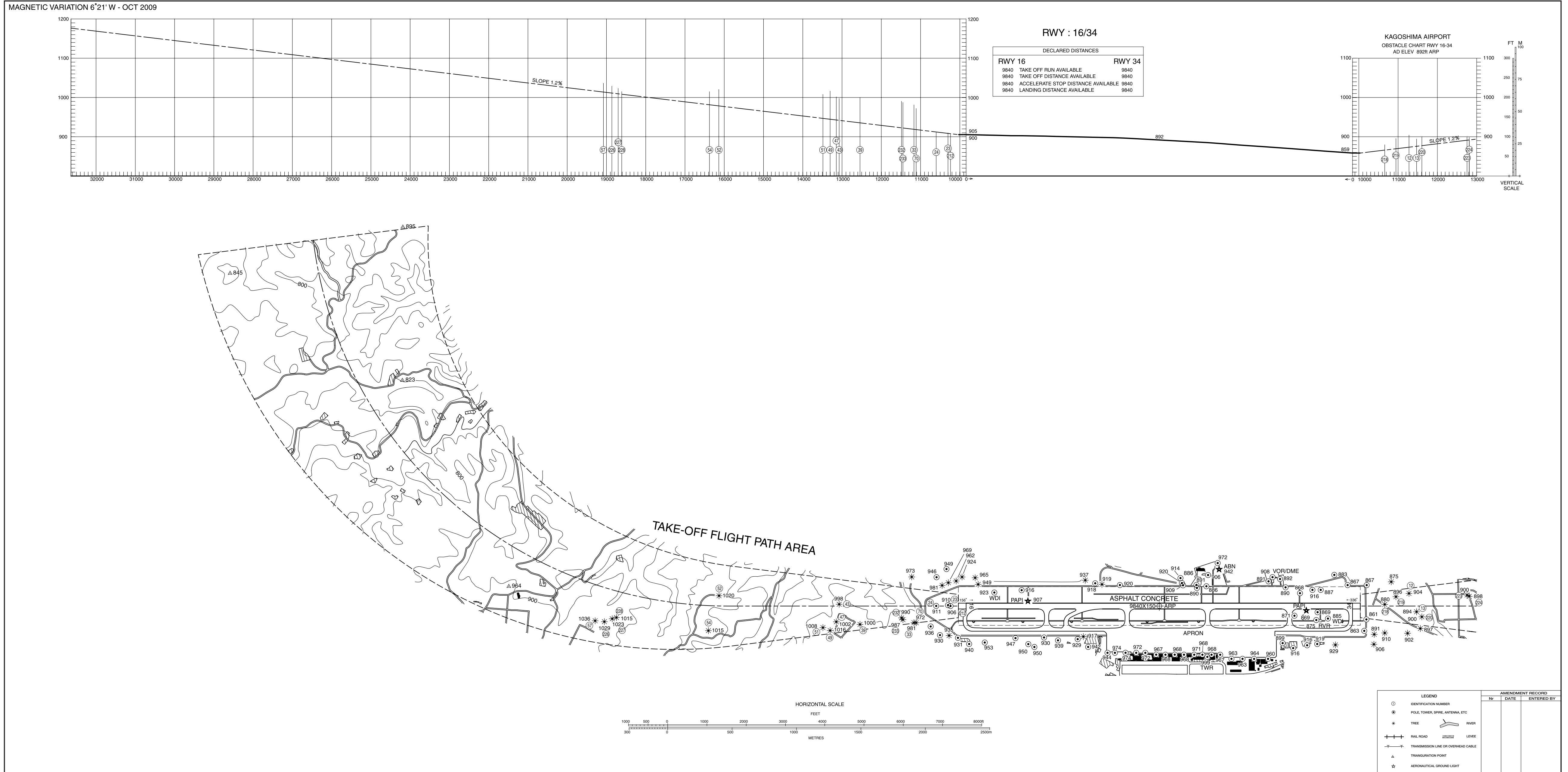
RJFK / KAGOSHIMA

AERODROME CHART



DIMENSIONS AND ELEVATIONS IN FEET BEARINGS ARE MAGNETIC

AERODROME OBSTACLE CHART - ICAO
TYPE A (OPERATING LIMITATIONS)



DIMENSIONS AND ELEVATIONS IN FEET BEARINGS ARE MAGNETIC

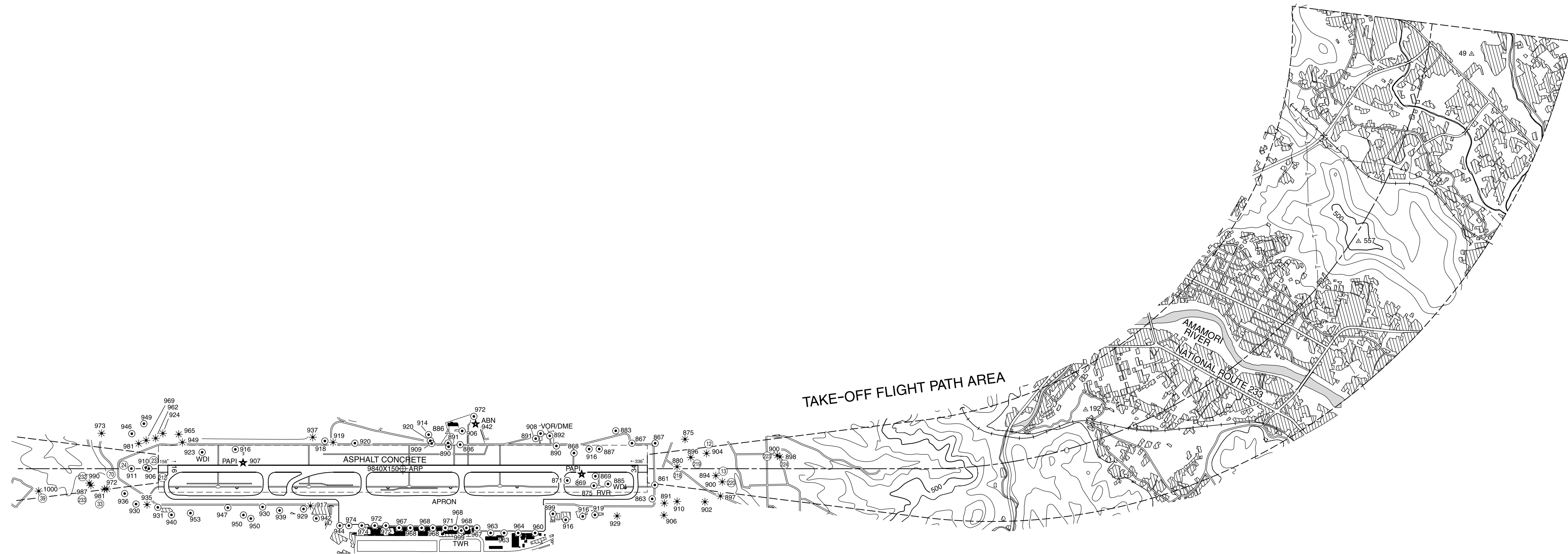
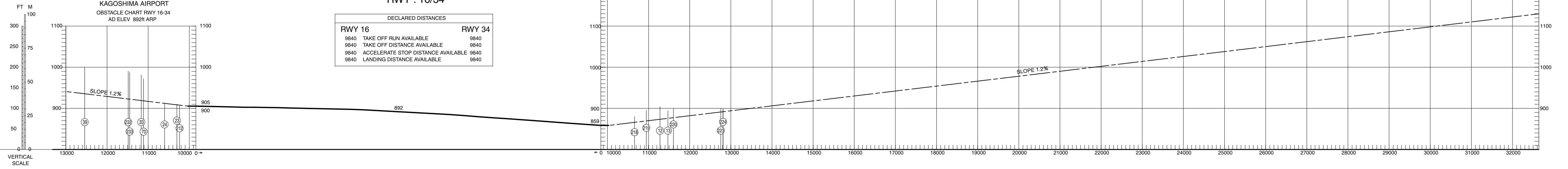
**AERODROME OBSTACLE CHART - ICAO
TYPE A (OPERATING LIMITATIONS)**

MAGNETIC VARIATION 6°21' W - OCT 2009

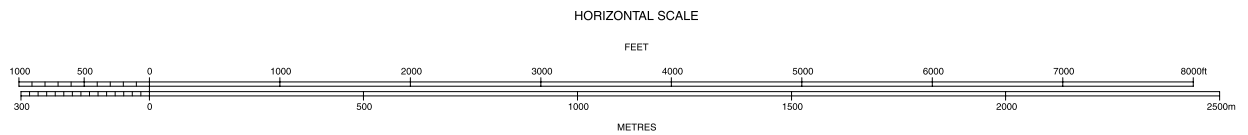
KAGOSHIMA AIRPORT
OBSTACLE CHART RWY 16-34
AD ELEV 892M ARP

RWY : 16/34

DECLARED DISTANCES	
RWY 16	RWY 34
9840 TAKE OFF RUN AVAILABLE	9840
9840 TAKE OFF DISTANCE AVAILABLE	9840
9840 ACCELERATE STOP DISTANCE AVAILABLE	9840
9840 LANDING DISTANCE AVAILABLE	9840



LEGEND	AMENDMENT RECORD		
	Nr	DATE	ENTERED BY
○ IDENTIFICATION NUMBER			
● POLE, TOWER, SPIRE, ANTENNA, ETC			
* TREE			
— RIVER			
— PAVILION			
— LEVEE			
— TRANSMISSION LINE OR OVERHEAD CABLE			
△ TRIANGULATION POINT			
☆ AERONAUTICAL GROUND LIGHT			



STANDARD DEPARTURE CHART-INSTRUMENT

RJFK / KAGOSHIMA

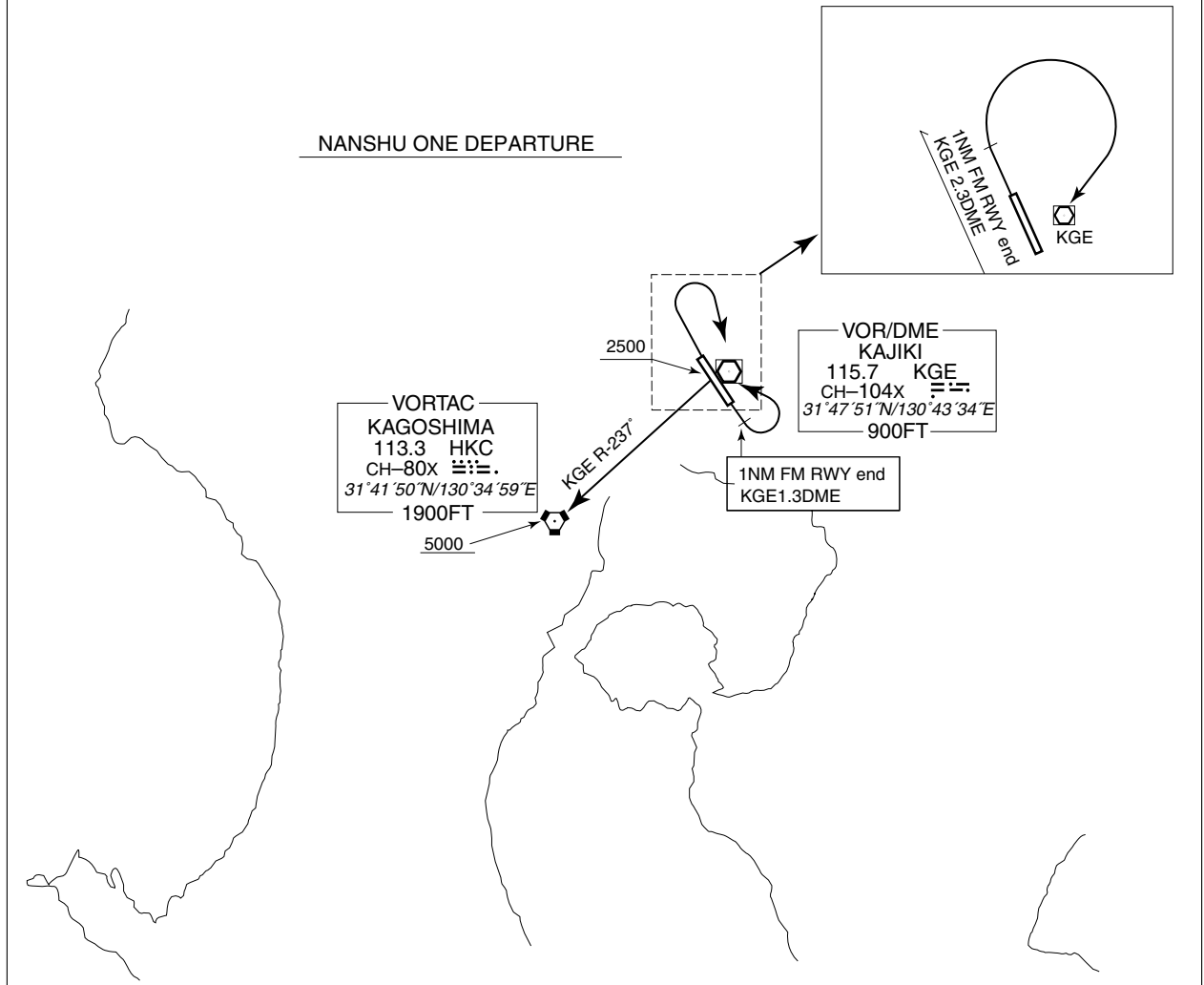
SID

NANSHU ONE DEPARTURE

- RWY 16 : Climb via RWY HDG until 1NM from RWY end/KGE 1.3DME, turn left,....
- RWY 34 : Climb via RWY HDG until 1NM from RWY end/KGE 2.3DME, turn right,....
....proceed to KGE VOR/DME, then via KGE R-237 to HKC VORTAC.
Cross KGE VOR/DME at or above 2,500 FT, cross HKC VORTAC at or above 5,000 FT.

NOTE : When take off RWY34, following climb gradient should be maintained until 2,100FT.

Speed (Knots)	60	90	120	150	180	210
Rate (Feet/Min)	300	450	600	750	900	1050



STANDARD DEPARTURE CHART-INSTRUMENT

RJFK / KAGOSHIMA

SID

WEST NINE DEPARTURE

RWY 16 : Climb via RWY HDG until 1NM from RWY end/KGE 1.3DME, turn left,....

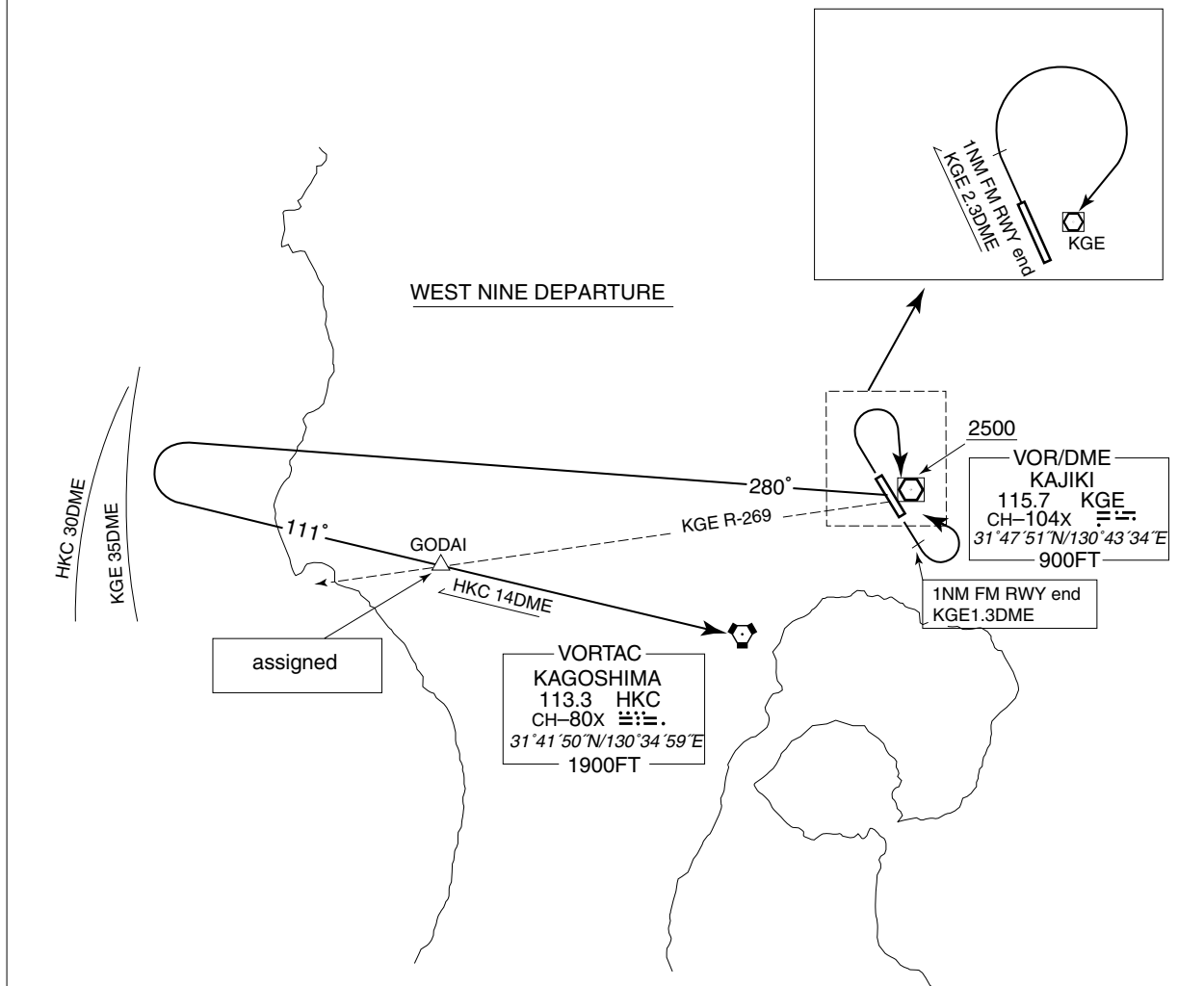
RWY 34 : Climb via RWY HDG until 1NM from RWY end/KGE 2.3DME, turn right,....

....proceed to KGE VOR/DME, then via KGE R-280, then turn left within HKC 30DME/KGE 35DME, proceed via HKC R-291 to HKC VORTAC.

Cross KGE VOR/DME at or above 2,500 FT, cross GODAI (KGE R-269) at assigned altitude.

NOTE : When take off RWY34, following climb gradient should be maintained until 2,100FT.

Speed (Knots)	60	90	120	150	180	210
Rate (Feet/Min)	300	450	600	750	900	1050



STANDARD DEPARTURE CHART-INSTRUMENT

RJFK / KAGOSHIMA

SID and TRANSITION

ISAMI THREE DEPARTURE

RWY 16 : Climb via RWY HDG until 1NM from RWY end/KGE 1.3DME, turn left,....

RWY 34 : Climb via RWY HDG until 1NM from RWY end/KGE 2.3DME, turn right,...

....proceed to KGE VOR/DME, then via KGE R-280 to ISAMI.
Cross KGE VOR/DME at or above 2,500 FT.

NOTE : When take off RWY34, following climb gradient should be maintained until 2,100FT.

Speed (Knots)	60	90	120	150	180	210
Rate (Feet/Min)	300	450	600	750	900	1050

SASIK SOUTH TRANSITION

After ISAMI, via HKC R-001 to SASIK.

Cross HKC R-001/21DME at assigned altitude.

NAGASAKI TRANSITION

After ISAMI, via KGE R-280 to intercept and proceed via HKC R-341 to OLE VOR/DME.

Cross HKC R-341/22DME (KUE R-212) at assigned altitude.

KAJIKI TRANSITION

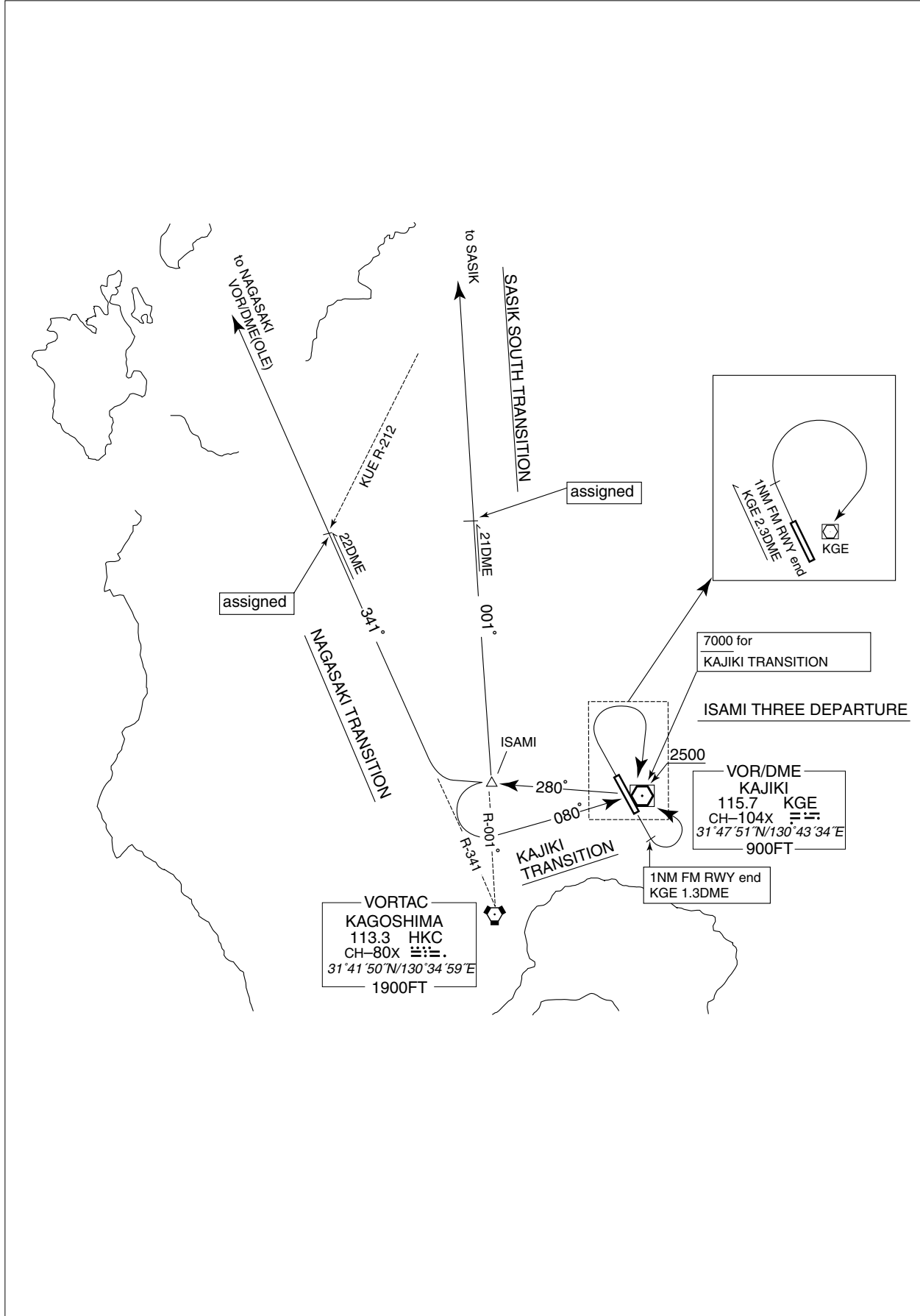
After ISAMI, turn left to intercept and proceed via KGE R-260 to KGE VOR/DME.

Cross KGE VOR/DME at or above 7,000 FT.

STANDARD DEPARTURE CHART-INSTRUMENT

RJFK / KAGOSHIMA

SID and TRANSITION



STANDARD DEPARTURE CHART-INSTRUMENT

RJFK / KAGOSHIMA

SID and TRANSITION

OSUMI FOUR DEPARTURE

RWY 16 :

RWY 34 : Climb via RWY HDG until 1NM from RWY end/KGE 2.3DME, turn right,....
....climb via KGE R-169 to OSUMI.

Note : Following climb gradient should be maintained until 4,200FT.

Speed (Knots)	60	90	120	150	180	210
Rate (Feet/Min)	300	450	600	750	900	1050

SOUTH THREE DEPARTURE

RWY 16 : Climb via RWY HDG until 1NM from RWY end/KGE 1.3DME, turn left, proceed to KGE VOR/DME, then via KGE R-169 to OSUMI.
Cross KGE VOR/DME at or above 2,500FT.

RWY 34 : Not established.

JOKER TRANSITION

After OSUMI, proceed via HKC R-134 to JOKER.

TOZAK TRANSITION

After OSUMI, proceed via KBE R-198 to intercept and proceed via HKC R-168 to TOZAK.

Cross KBE R-198/11DME at or above 7,000FT.

SAZMA TRANSITION

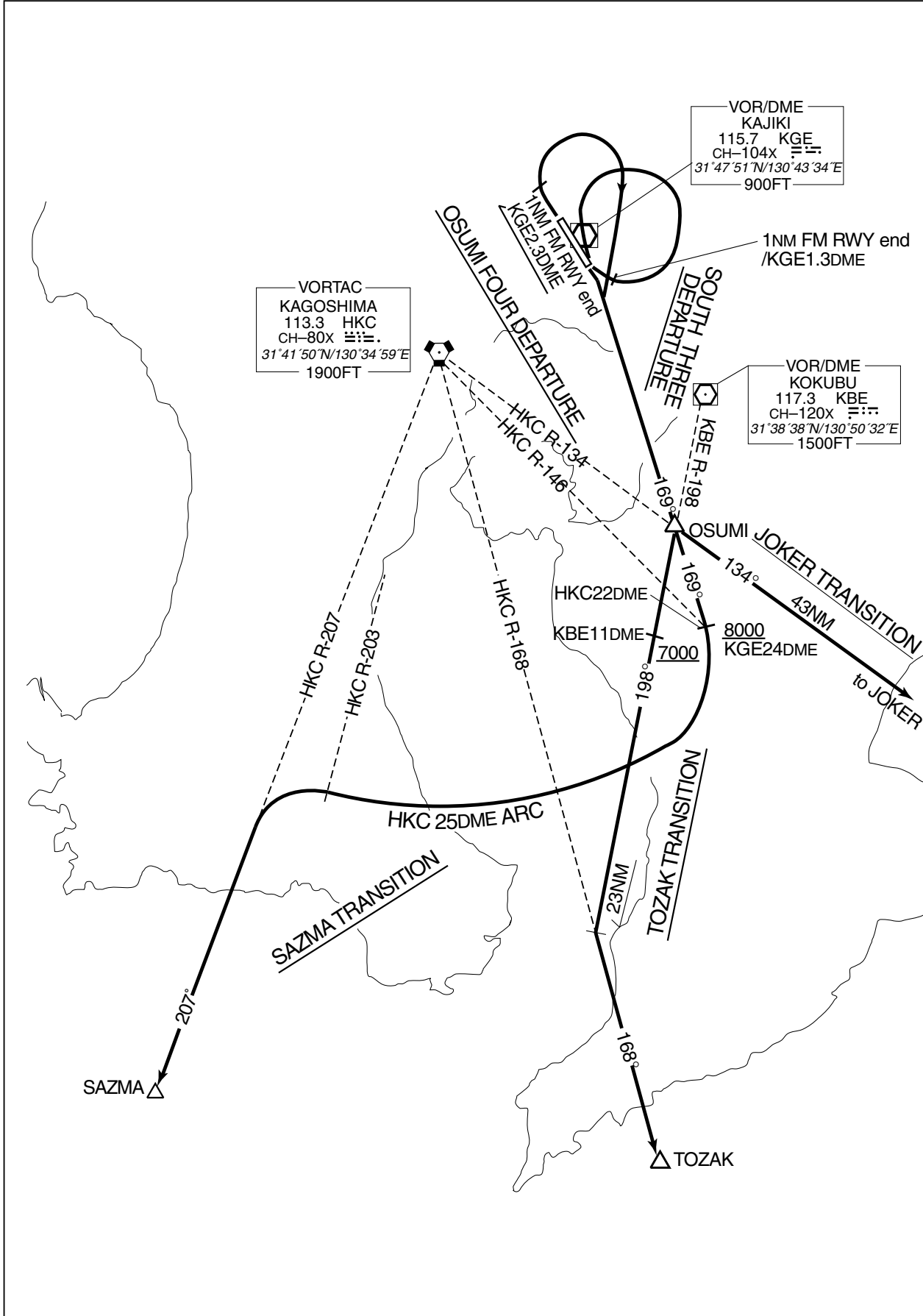
After OSUMI, proceed via KGE R-169 to KGE 24DME(HKC R-146/22DME), turn right, via HKC 25DME clockwise ARC to intercept and proceed via HKC R-207 to SAZMA.

Cross KGE R-169/24DME(HKC R-146/22DME) at or above 8,000FT.

STANDARD DEPARTURE CHART-INSTRUMENT

RJFK / KAGOSHIMA

SID and TRANSITION



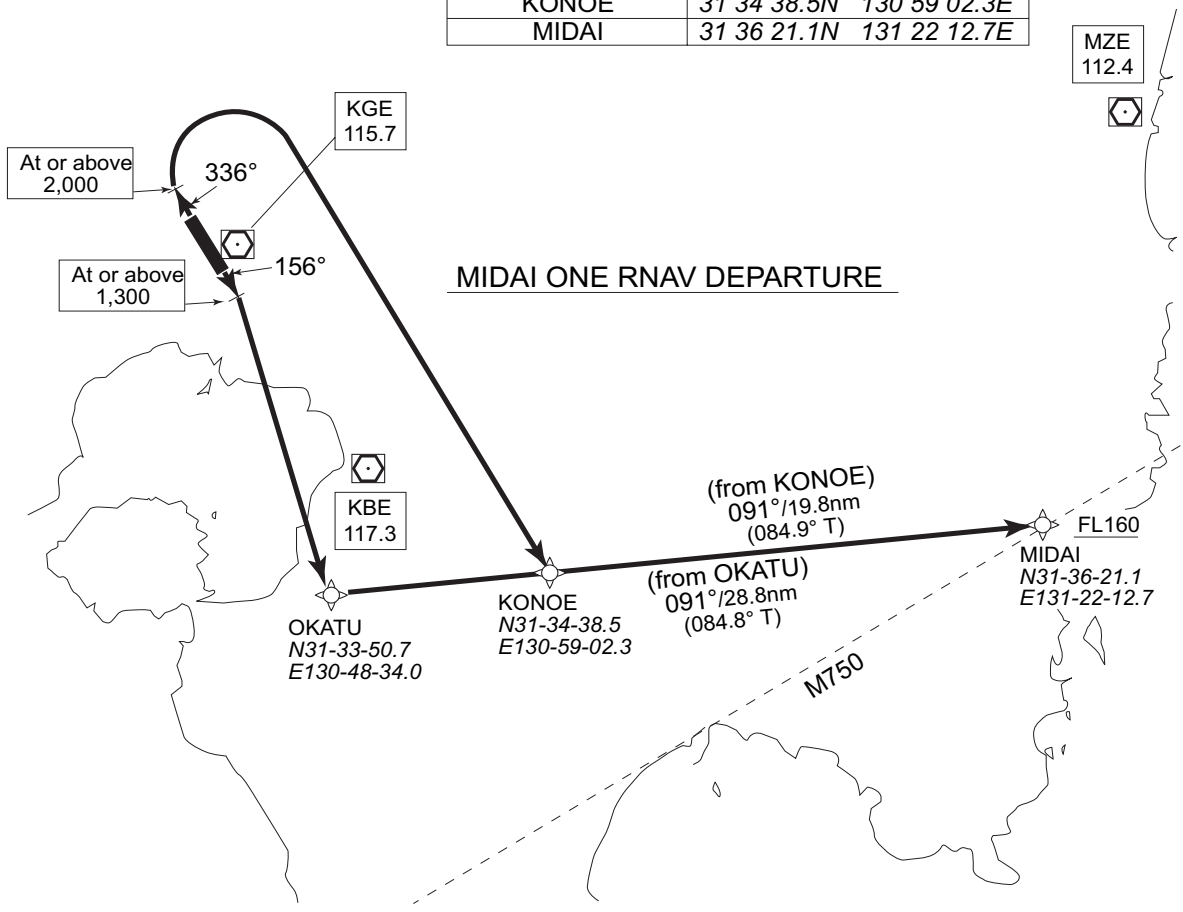
STANDARD DEPARTURE CHART - INSTRUMENT

RJFK / KAGOSHIMA

RNAV SID

MIDAI ONE RNAV DEPARTURE		RNAV 1
Note 1) DME/DME/IRU or GNSS required. *The aircraft equipped with only DME/DME/IRU must be able to update its position without delay at the starting point of take-off roll. 2) RADAR service required.	Critical DME	HKC : RWY16 : DER—OKATU RWY34 : DER—KONOE KBE : RWY16 : DER—9NM to OKATU RWY34 : DER—17NM to KONOE KGE : RWY16 : 9NM to OKATU—OKATU RWY34 : 17NM to KONOE—KONOE
	DME GAP	—
	Inappropriate Nav aids	See AD1.1.6.10.3. Inappropriate NAVAIDs for RNAV1

DESIGNATION	COORDINATES
OKATU	31 33 50.7N 130 48 34.0E
KONOE	31 34 38.5N 130 59 02.3E
MIDAI	31 36 21.1N 131 22 12.7E



Note : RWY34 : 5.0% climb gradient required up to 2,100ft.
 OBST ALT 3,150ft located at 7.7NM 046° FM end of RWY34.

MIDAI ONE RNAV DEPARTURE

RWY16 : Climb on heading 156°M at or above 1,300ft, direct to OKATU, to MIDAI at or above FL160.
 RWY34 : Climb on heading 336°M at or above 2,000ft, turn right direct to KONOE, to MIDAI at or above FL160.

Note : RWY34 : 5.0% climb gradient required up to 2,100ft.
 OBST ALT 3,150ft located at 7.7NM 046° FM end of RWY34.

STANDARD DEPARTURE CHART - INSTRUMENT

RJFK / KAGOSHIMA

RNAV SID

MIDAI ONE RNAV DEPARTURE

RWY16

Rcmd. Path Terminator	Fix ID (Waypoint Name)	Fly Over	Distance (NM)	MAG Track (TRUE Track)	Turn Direction	Altitude (ft)	Speed Limit (kt)	Vertical Angle	Navigation Performance
VA	—	—	—	156° (150.1°)	—	1300	—	—	RNAV1
DF	OKATU	—	—	—	R	—	—	—	RNAV1
TF	MIDAI	—	28.8	091° (084.8°)	—	+FL160	—	—	RNAV1

RWY34

Rcmd. Path Terminator	Fix ID (Waypoint Name)	Fly Over	Distance (NM)	MAG Track (TRUE Track)	Turn Direction	Altitude (ft)	Speed Limit (kt)	Vertical Angle	Navigation Performance
VA	—	—	—	336° (330.1°)	—	2000	—	—	RNAV1
DF	KONOE	—	—	—	R	—	—	—	RNAV1
TF	MIDAI	—	19.8	091° (084.9°)	—	+FL160	—	—	RNAV1

STANDARD DEPARTURE CHART - INSTRUMENT

RJFK / KAGOSHIMA

SID

Only use in case of avoiding the volcanic ash cloud.

SOGIE TWO DEPARTURE

RWY 16 : Climb via RWY HDG until 1NM from RWY end/KGE 1.3DME, turn left , proceed to KGE VOR/DME to cross at or above 2,500FT,....

RWY 34 : Climb via RWY HDG until 1NM from RWY end/KGE 2.3DME, turn right,...
....climb via KGE R-347 to SOGIE.

NOTE : When take off RWY34, following climb gradient should be maintained until 2,300FT.

Speed (Knots)	60	90	120	150	180	210
Rate (Feet/Min)	300	450	600	750	900	1050

SAKURAJIMA TRANSITION

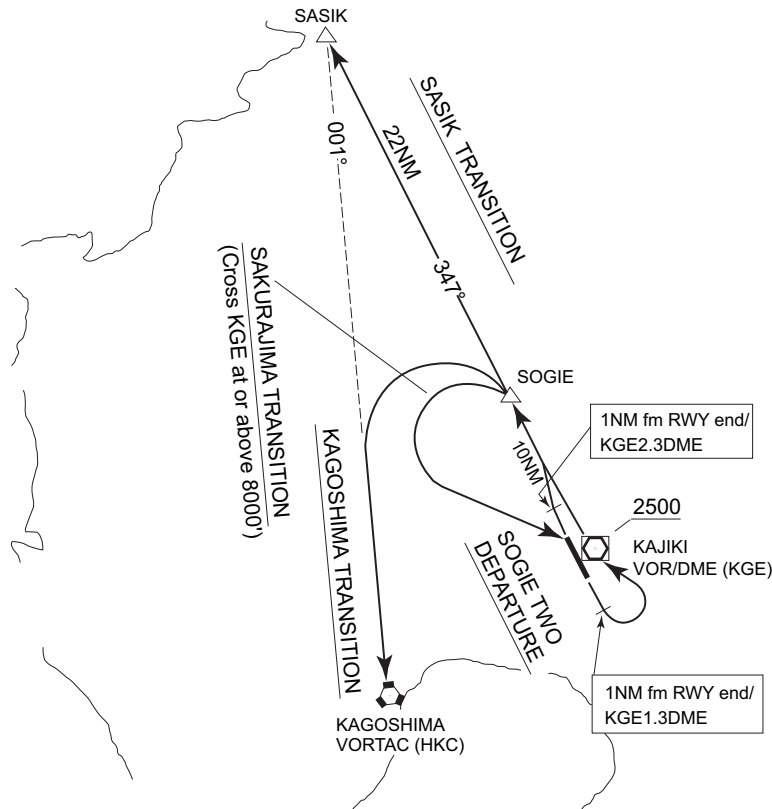
After SOGIE, turn left and proceed to KGE VOR/DME.
Cross KGE VOR/DME at or above 8,000 FT.

SASIK TRANSITION

After SOGIE, proceed via KGE R-347 to SASIK.

KAGOSHIMA TRANSITION

After SOGIE, turn left to intercept and proceed via HKC R-001 to HKC VOR-TAC.



STANDARD ARRIVAL CHART -INSTRUMENT

RJFK / KAGOSHIMA

STAR

STAR
HAYAT SOUTH ARRIVAL

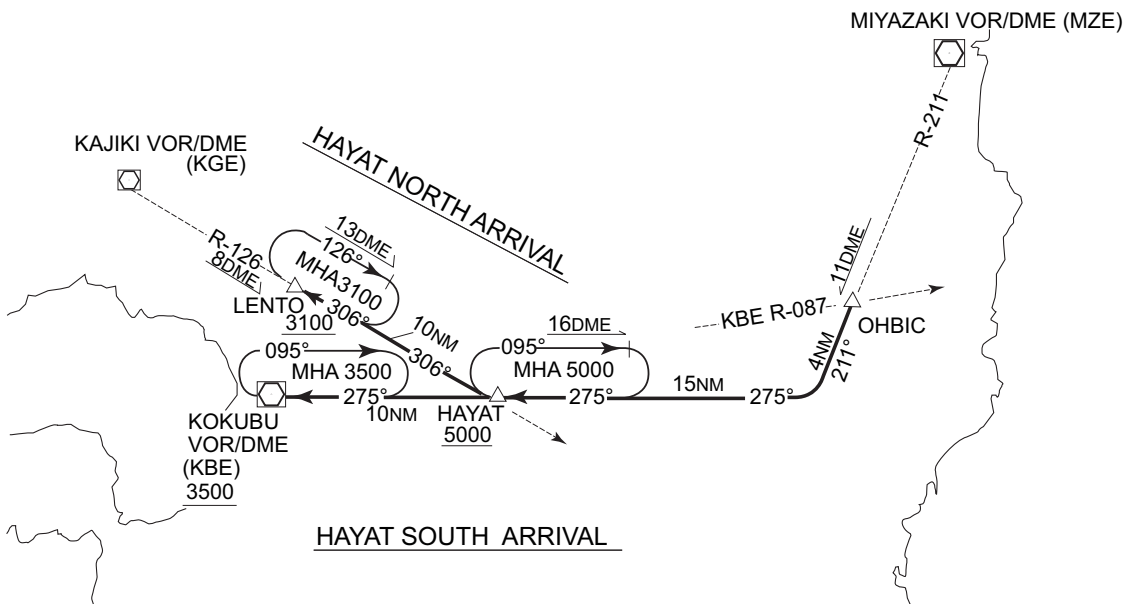
From over OHBIC, proceed via MZE R-211 to intercept and proceed via KBE R-095 to KBE VOR/DME.

Cross HAYAT at or above 5,000 FT, cross KBE VOR/DME at or above 3,500FT.

HAYAT NORTH ARRIVAL

From over OHBIC, proceed via MZE R-211 to intercept and proceed via KBE R-095 to HAYAT, then via KGE R-126 to LENTO.

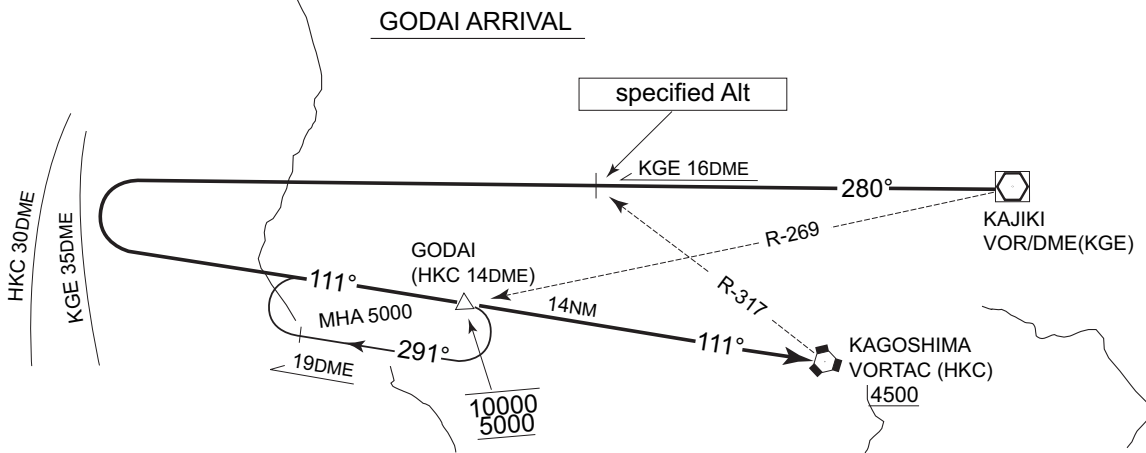
Cross HAYAT at or above 5,000 FT, cross LENTO at or above 3,100FT.



GODAI ARRIVAL

From over KGE VOR/DME, proceed via KGE R-280, then turn left to intercept and proceed via HKC R-291 to HKC VORTAC within HKC 30DME (KGE 35DME).

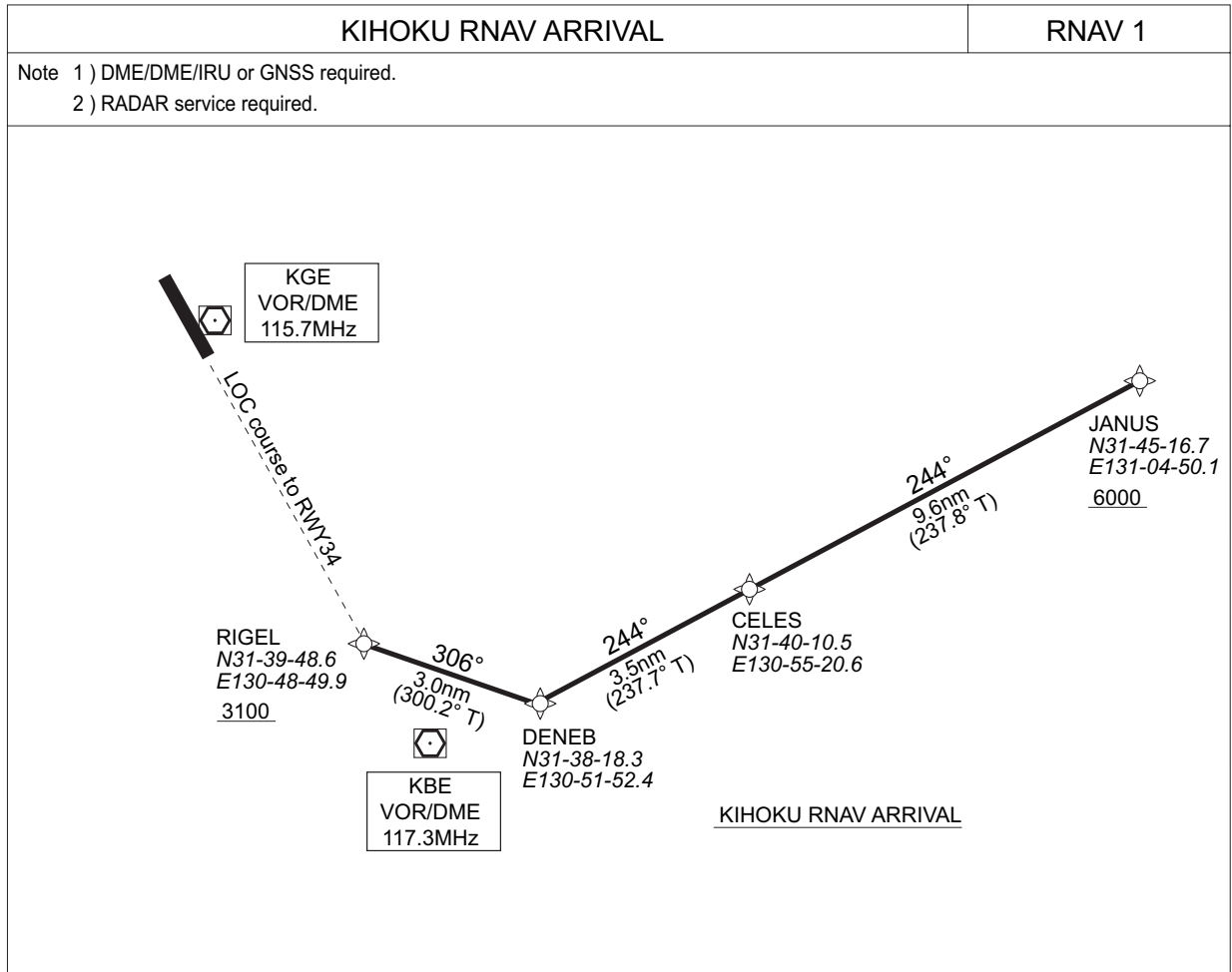
Cross KGE R-280/16DME (HKC R-317) at specified altitude, cross GODAI between 5,000FT and 10,000FT, cross HKC VORTAC at or above 4,500 FT.



STANDARD ARRIVAL CHART -INSTRUMENT

RJFK / KAGOSHIMA

RNAV STAR



KIHOKU RNAV ARRIVAL

From JANUS at or above 6,000ft, to CELES, to DENEb, to RIGEL at or above 3,100ft.

FIX	DESIGNATION	COORDINATES
	JANUS	31 45 16.7N 131 04 50.1E
CELES	31 40 10.5N 130 55 20.6E	
DENEb	31 38 18.3N 130 51 52.4E	
RIGEL	31 39 48.6N 130 48 49.9E	

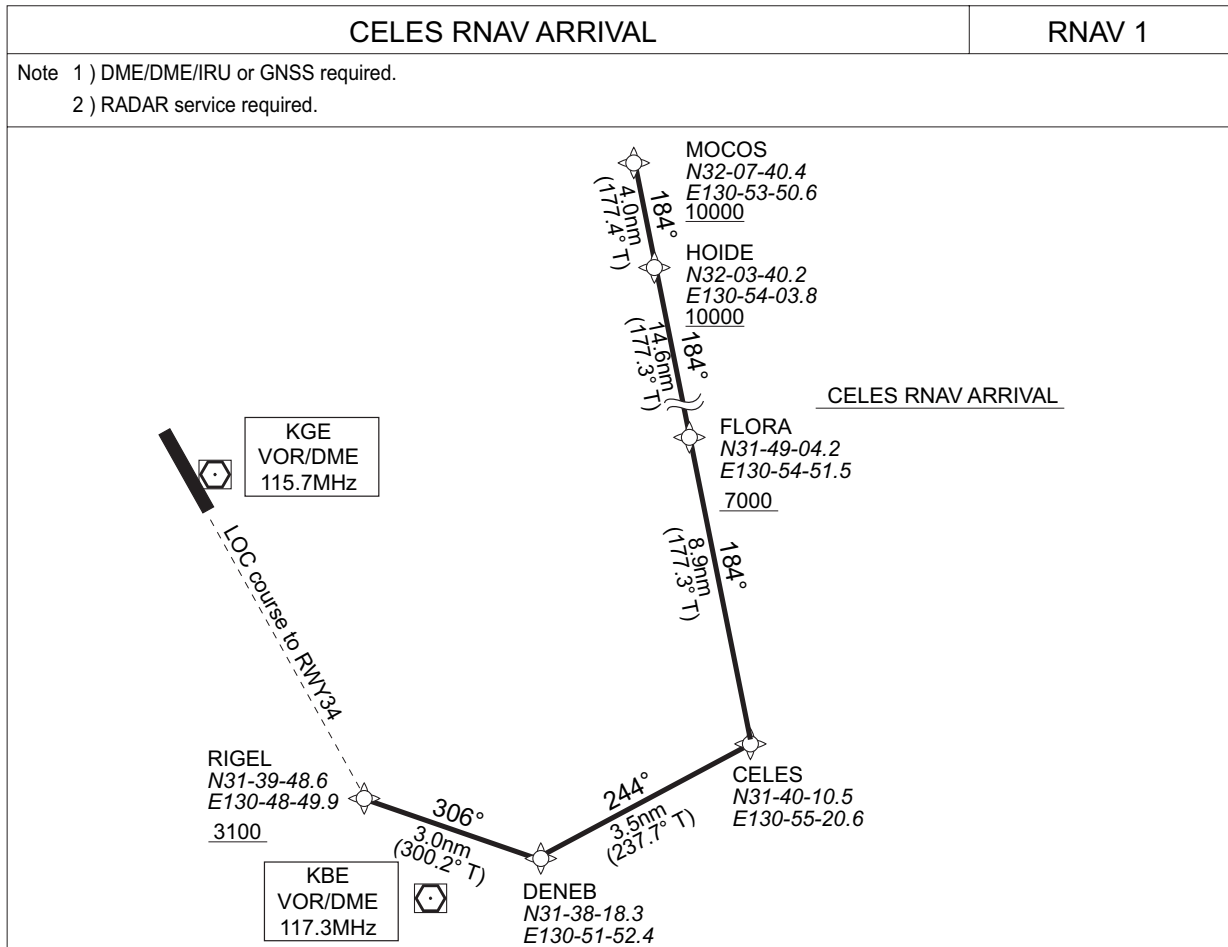
Critical DME	KGE	6NM to CELES - RIGEL
DME GAP	HKC	2NM to DENEb - RIGEL
Inappropriate Navaids	See AD1.1.6.10.3. Inappropriate NAVAIDs for RNAV1	

Rcmd. Path Terminator	Fix ID (Waypoint Name)	Fly Over	Distance (NM)	MAG Track (TRUE Track)	Turn Direction	Altitude (ft)	Speed Limit (kt)	Vertical Angle	Navigation Performance
IF	JANUS	—	—	—	—	+6000	—	—	RNAV1
TF	CELES	—	9.6	244° (237.8°)	—	—	—	—	RNAV1
TF	DENEb	—	3.5	244° (237.7°)	—	—	—	—	RNAV1
TF	RIGEL	—	3.0	306° (300.2°)	—	+3100	—	—	RNAV1

STANDARD ARRIVAL CHART-INSTRUMENT

RJFK / KAGOSHIMA

RNAV STAR



CELES RNAV ARRIVAL

From MOCOS at or above 10,000ft, to HOIDE at or above 10,000ft, to FLORA at or above 7,000ft, to CELES, to DENEb, to RIGEL at or above 3,100ft.

FIX	DESIGNATION	COORDINATES
	MOCOS	32 07 40.4N 130 53 50.6E
HOIDE	32 03 40.2N 130 54 03.8E	
FLORA	31 49 04.2N 130 54 51.5E	
CELES	31 40 10.5N 130 55 20.6E	
DENEb	31 38 18.3N 130 51 52.4E	
RIGEL	31 39 48.6N 130 48 49.9E	
Critical DME	SGE	3NM to FLORA - FLORA
	KGE	6NM to CELES - RIGEL
	HKC	2NM to DENEb - RIGEL
DME GAP	-	-
Inappropriate NavAids		See AD1.1.6.10.3. Inappropriate NAVAIDs for RNAV1

Rcmd. Path Terminator	Fix ID (Waypoint Name)	Fly Over	Distance (NM)	MAG Track (TRUE Track)	Turn Direction	Altitude (ft)	Speed Limit (kt)	Vertical Angle	Navigation Performance
IF	MOCOS	-	-	-	-	+10000	-	-	RNAV1
TF	HOIDE	-	4.0	184° (177.4°)	-	+10000	-	-	RNAV1
TF	FLORA	-	14.6	184° (177.3°)	-	+7000	-	-	RNAV1
TF	CELES	-	8.9	184° (177.3°)	-	-	-	-	RNAV1
TF	DENEb	-	3.5	244° (237.7°)	-	-	-	-	RNAV1
TF	RIGEL	-	3.0	306° (300.2°)	-	+3100	-	-	RNAV1

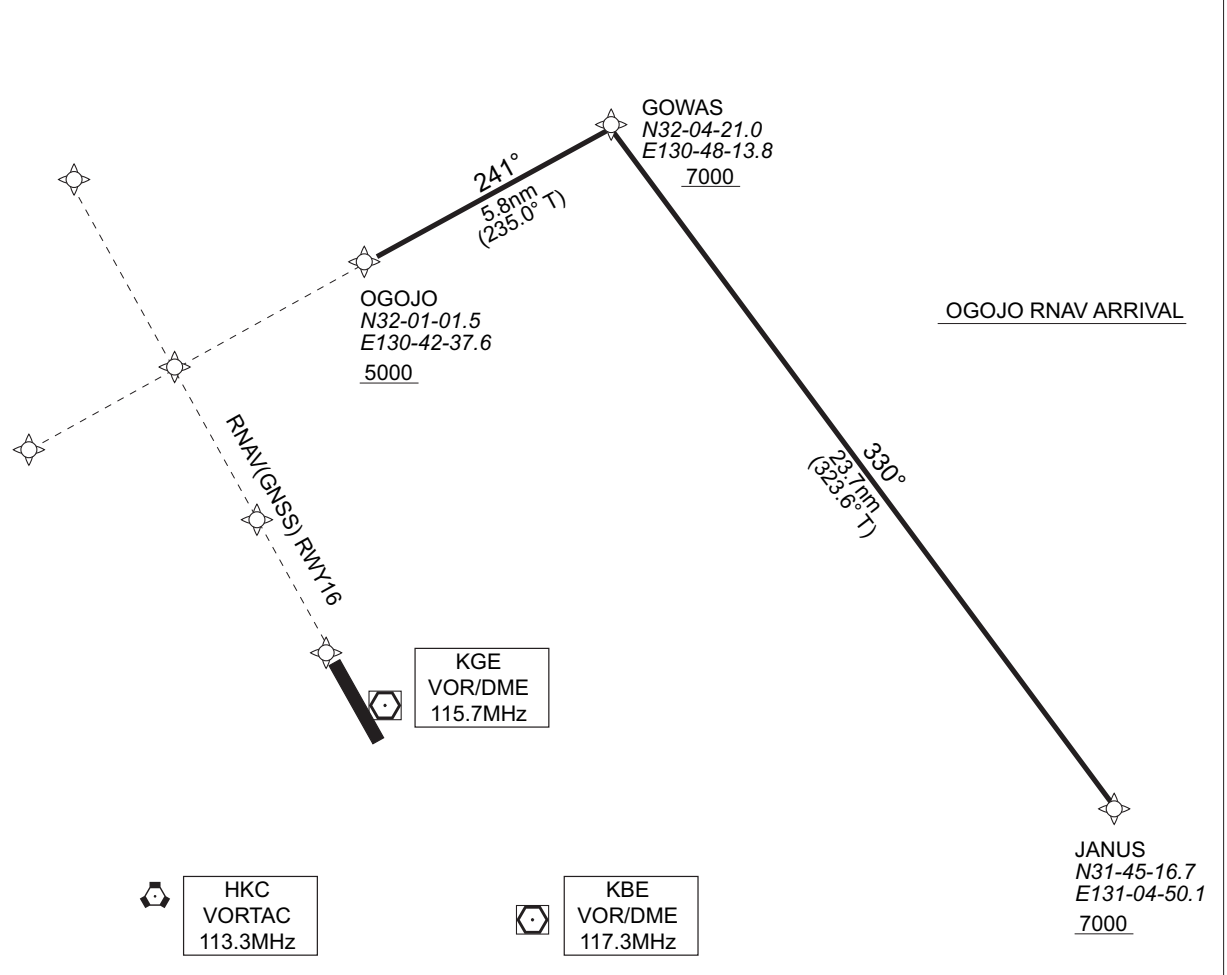
STANDARD ARRIVAL CHART-INSTRUMENT

RJFK / KAGOSHIMA

RNAV STAR

OGOJO RNAV ARRIVAL RNAV 1

Note 1) DME/DME/IRU or GNSS required.
2) RADAR service required.



OGOJO RNAV ARRIVAL

From JANUS at or above 7,000ft, to GOWAS at or above 7,000ft, to OGOJO at or above 5,000ft.

FIX	DESIGNATION	COORDINATES
	JANUS	31 45 16.7N 131 04 50.1E
GOWAS	32 04 21.0N 130 48 13.8E	
OGOJO	32 01 01.5N 130 42 37.6E	
Critical DME	—	—
DME GAP	—	—
Inappropriate Navaids	See AD1.1.6.10.3. Inappropriate NAVAIDs for RNAV1	

Rcmd. Path Terminator	Fix ID (Waypoint Name)	Fly Over	Distance (NM)	MAG Track (TRUE Track)	Turn Direction	Altitude (ft)	Speed Limit (kt)	Vertical Angle	Navigation Performance
IF	JANUS	—	—	—	—	+7000	—	—	RNAV1
TF	GOWAS	—	23.7	330° (323.6°)	—	+7000	—	—	RNAV1
TF	OGOJO	—	5.8	241° (235.0°)	—	+5000	—	—	RNAV1

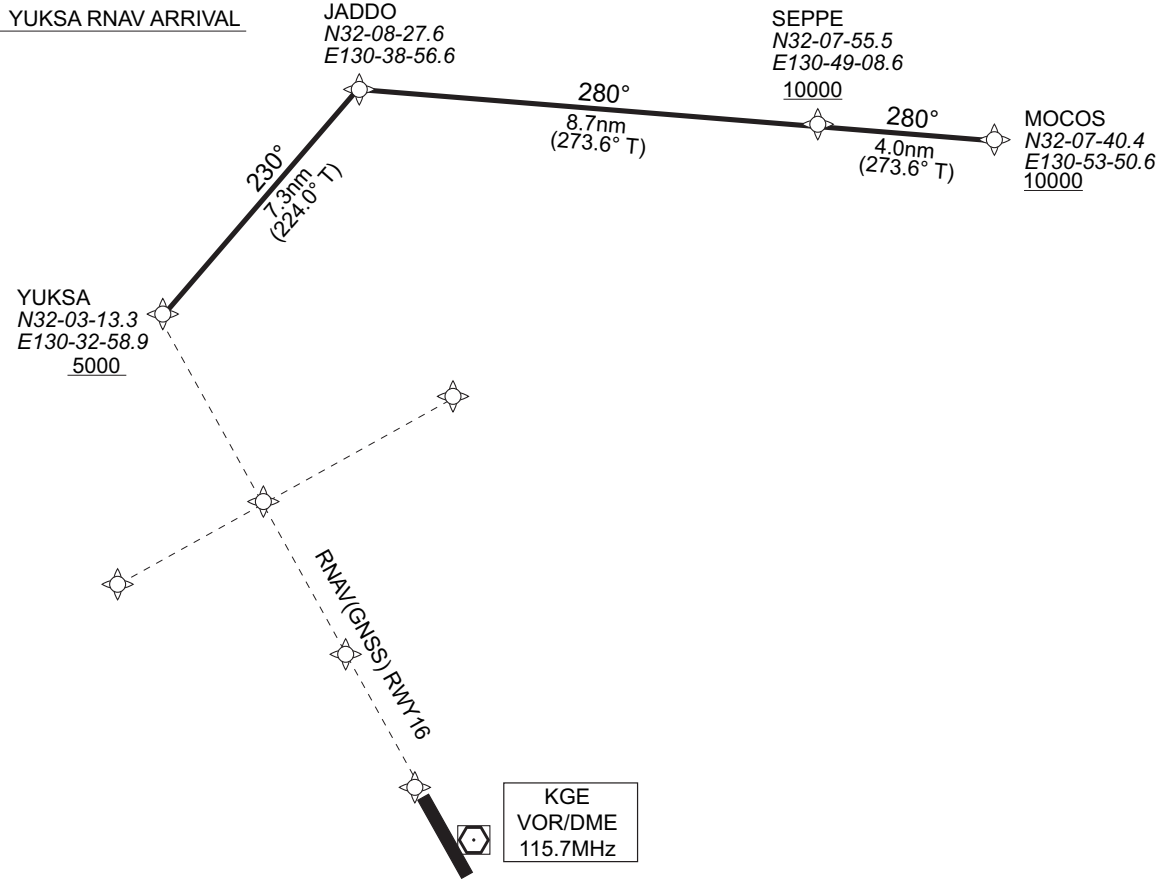
STANDARD ARRIVAL CHART -INSTRUMENT

RJFK / KAGOSHIMA

RNAV STAR

YUKSA RNAV ARRIVAL RNAV 1

Note 1) DME/DME/IRU or GNSS required.
2) RADAR service required.



YUKSA RNAV ARRIVAL

From MOCOS at or above 10,000ft, to SEPPE at or above 10,000ft, to JADDO, to YUKSA at or above 5,000ft.

FIX	DESIGNATION	COORDINATES
	MOCOS	32 07 40.4N 130 53 50.6E
SEPPE	32 07 55.5N 130 49 08.6E	
JADDO	32 08 27.6N 130 38 56.6E	
YUKSA	32 03 13.3N 130 32 58.9E	
Critical DME	MZE	2NM to JADDO - JADDO
	KUE	1NM to YUKSA - YUKSA
	MZE	1NM to YUKSA - YUKSA
DME GAP	-	-
Inappropriate Navaids	See AD1.1.6.10.3. Inappropriate NAVAIDs for RNAV1	

Rcmd. Path Terminator	Fix ID (Waypoint Name)	Fly Over	Distance (NM)	MAG Track (TRUE Track)	Turn Direction	Altitude (ft)	Speed Limit (kt)	Vertical Angle	Navigation Performance
IF	MOCOS	-	-	-	-	+10000	-	-	RNAV1
TF	SEPPE	-	4.0	280° (273.6°)	-	+10000	-	-	RNAV1
TF	JADDO	-	8.7	280° (273.6°)	-	-	-	-	RNAV1
TF	YUKSA	-	7.3	230° (224.0°)	-	+5000	-	-	RNAV1

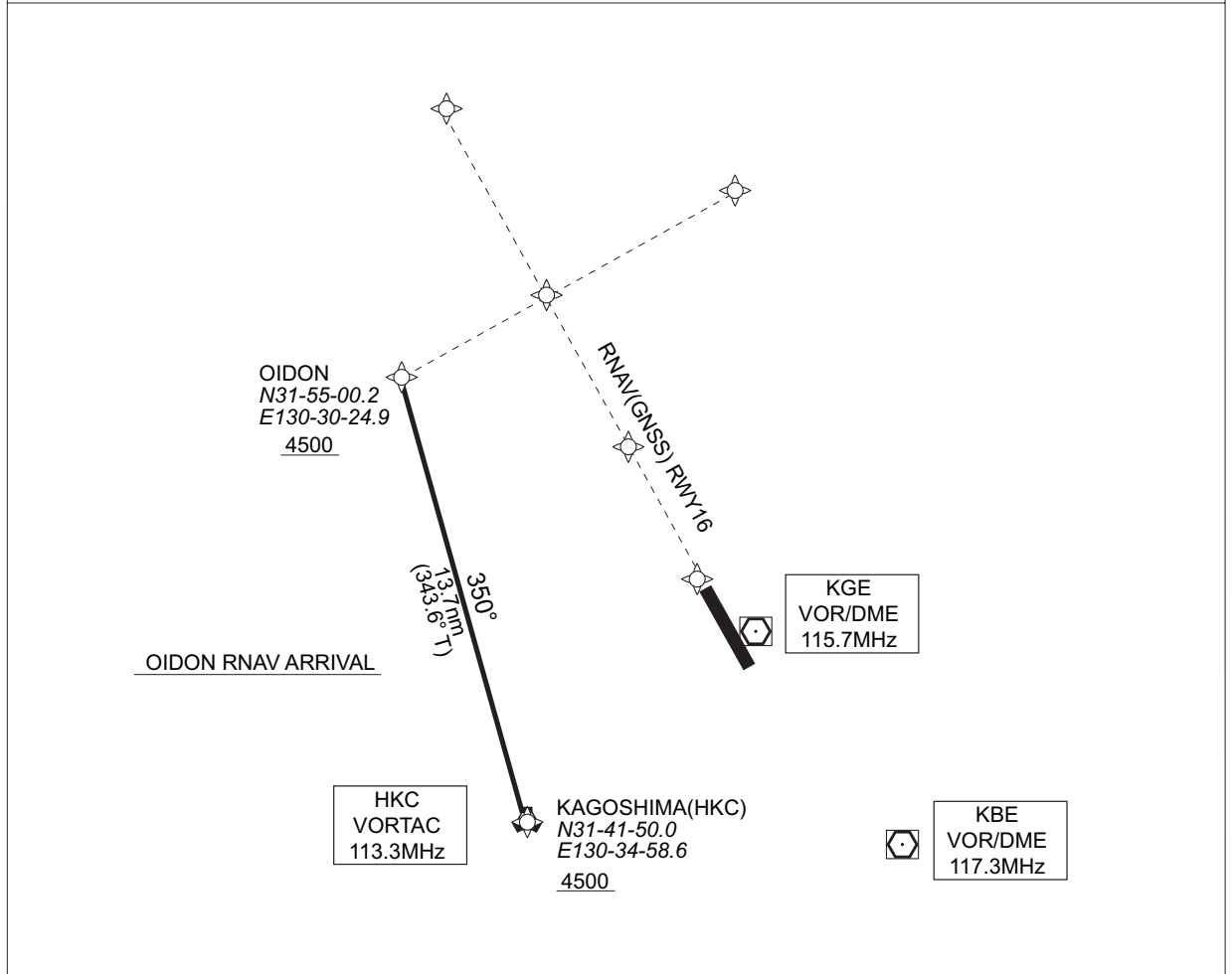
STANDARD ARRIVAL CHART-INSTRUMENT

RJFK / KAGOSHIMA

RNAV STAR

OIDON RNAV ARRIVAL	RNAV 1
--------------------	--------

Note 1) DME/DME/IRU or GNSS required.
2) RADAR service required.



OIDON RNAV ARRIVAL

From KOGASHIMA(HKC) at or above 4,500ft, to OIDON at or above 4,500ft.

FIX	DESIGNATION	COORDINATES
	KAGOSHIMA(HKC)	31 41 50.0N 130 34 58.6E
	OIDON	31 55 00.2N 130 30 24.9E
Critical DME	KGE	HKC - 10NM to OIDON
	KBE	HKC - 10NM to OIDON
	HKC	7NM to OIDON - OIDON
DME GAP	-	-
Inappropriate NavAids	See AD1.1.6.10.3. Inappropriate NAVAIDS for RNAV1	

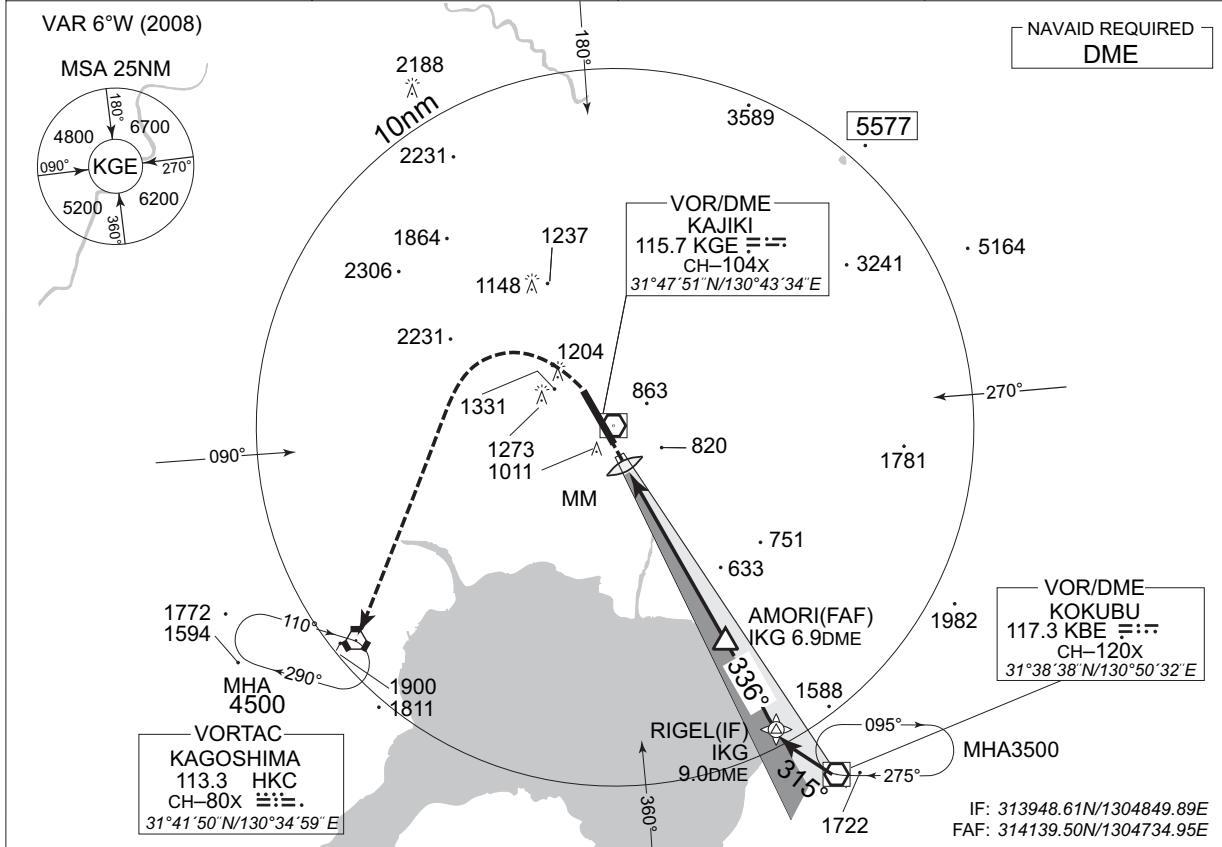
Rcmd. Path Terminator	Fix ID (Waypoint Name)	Fly Over	Distance (NM)	MAG Track (TRUE Track)	Turn Direction	Altitude (ft)	Speed Limit (kt)	Vertical Angle	Navigation Performance
IF	KAGOSHIMA (HKC)	-	-	-	-	+4500	-	-	RNAV1
TF	OIDON	-	13.7	350° (343.6°)	-	+4500	-	-	RNAV1

INSTRUMENT APPROACH CHART

RJFK / KAGOSHIMA

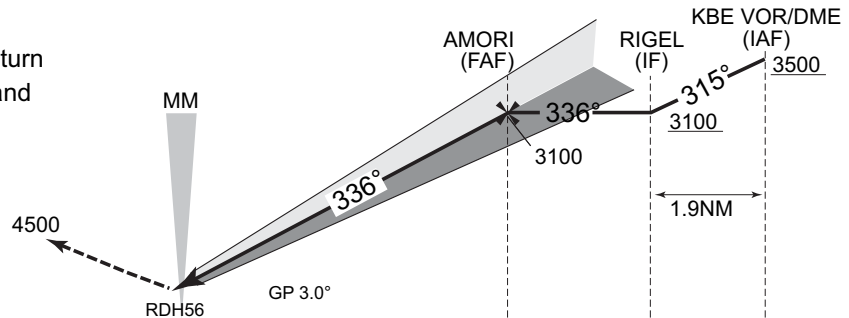
ILS Z RWY34

KAGOSHIMA APP 126.0 -119.4 120.8 -261.2	ILS - LOC 111.7 IKG CH-54X ILS-GP 333.5	KAGOSHIMA TOWER 118.2 -126.2 -261.2	RADAR AVBL ATIS 127.05
---	--	--	---------------------------



MISSED APPROACH

Climb to 1,300ft on HDG 336°, turn left proceed to HKC VORTAC and hold at 4,500ft.
Contact KAGOSHIMA APP.



NM to RWY34	0	0.5	6.7	8.9
DME to IKG	0.7		6.9	9.0

Missed APCH climb gradient MNM 5.0%.

MINIMA THR elev. 859 AD elev. 892

CAT	CAT I		CIRCLING	
	DA(H)	RVR/CMV	MDA(H)	VIS
A	1059 (200)	550	1660 (768)	1600
B				2400
C			1710 (818)	3200
D				

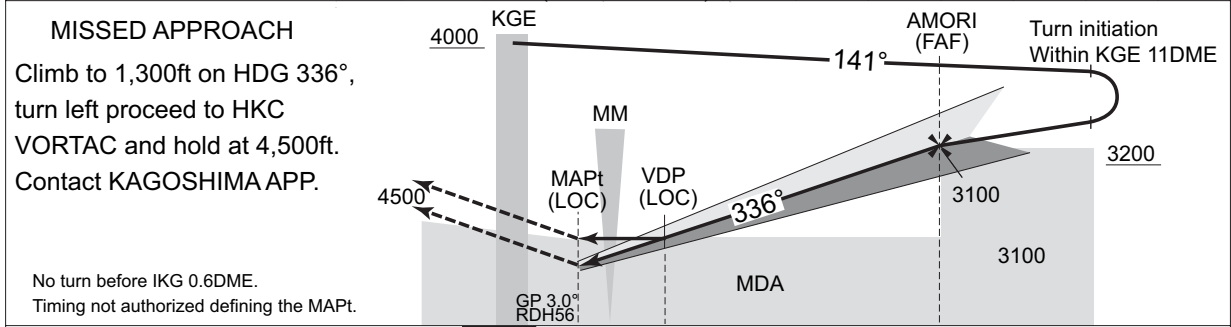
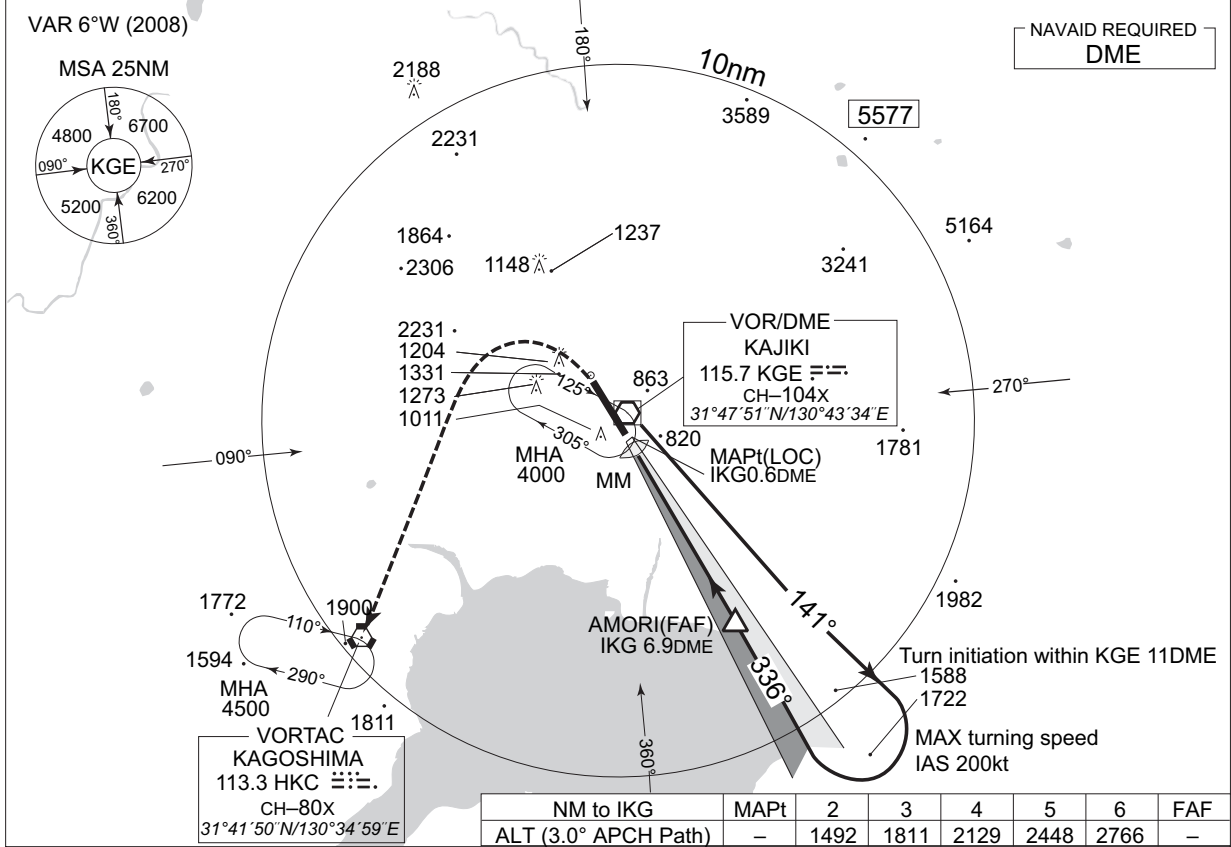
Minima with Missed APCH climb gradient of 2.5% are not established.

INSTRUMENT APPROACH CHART

RJFK / KAGOSHIMA

ILS Y or LOC Y RWY34

KAGOSHIMA APP 126.0 -119.4 120.8 -261.2	ILS - LOC 111.7 IKG CH-54X ILS-GP 333.5	KAGOSHIMA TOWER 118.2 -126.2 -261.2	RADAR AVBL ATIS 127.05
---	--	--	---------------------------



NM to RWY34	0	0.5	1.1	6.7
DME to IKG	0.6	0.7	1.2	6.9

Missed APCH climb gradient MNM 5.0%.

MINIMA		THR elev. 859	AD elev. 892			
CAT	CAT I		LOC		CIRCLING	
	DA(H)	RVR/CMV	MDA(H)	RVR/CMV	MDA(H)	VIS
A	1059 (200)	550	1240 (381)	900	1660 (768)	1600
B				1000		
C				1400	1710 (818)	3200
D				1400		

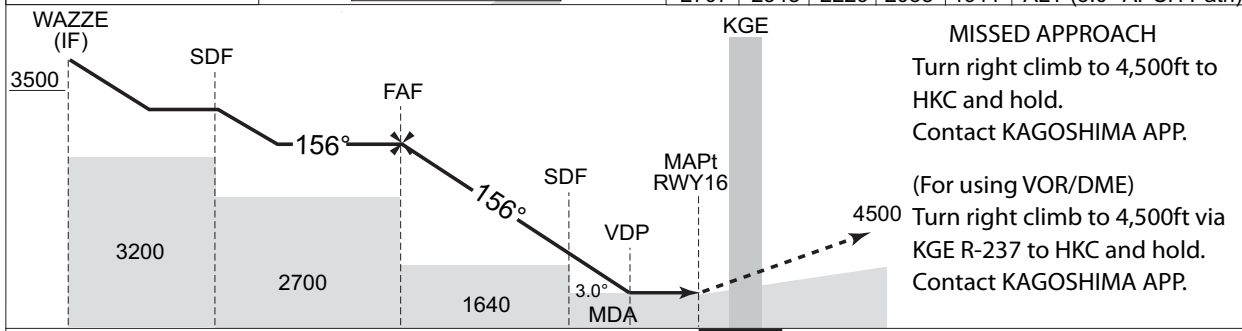
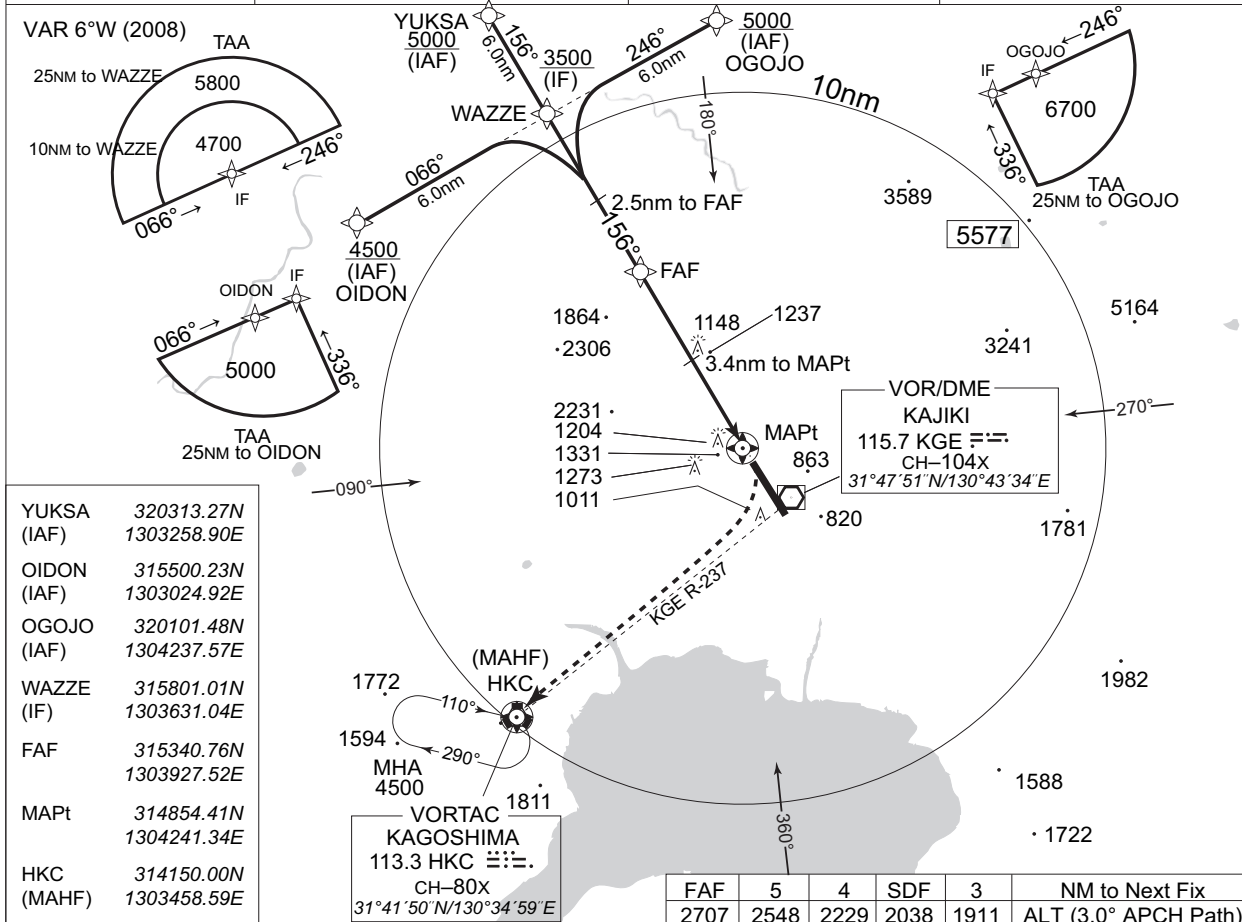
Minima with Missed APCH climb gradient of 2.5% are not established.

INSTRUMENT APPROACH CHART

RJFK / KAGOSHIMA

RNAV(GNSS) RWY16

KAGOSHIMA APP 126.0 –119.4 120.8 –261.2	Remarks: 1. DME/DME not authorized. 2. RADAR service required.	KAGOSHIMA TOWER 118.2 –126.2 –261.2	RADAR AVBL ATIS 127.05
---	--	--	---------------------------



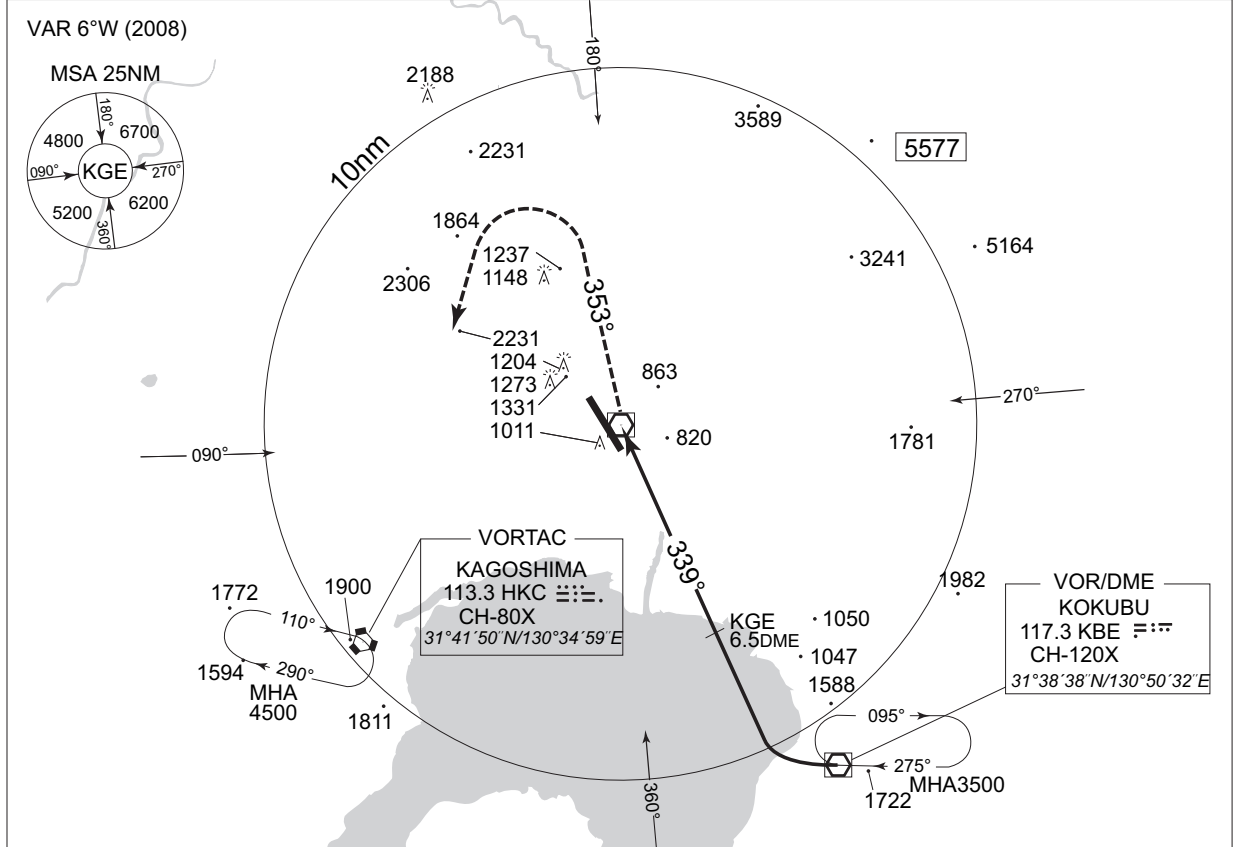
MINIMA		THR elev. 906		AD elev. 892		
CAT	LNAV/VNAV		L NAV		CIRCLING	
	DA(H)	CMV	MDA(H)	CMV	MDA(H)	VIS
A				1500	1660 (768)	1600
B			1610 (718)	1800		2400
C				2000	1710 (818)	3200
D						

INSTRUMENT APPROACH CHART

RJFK / KAGOSHIMA

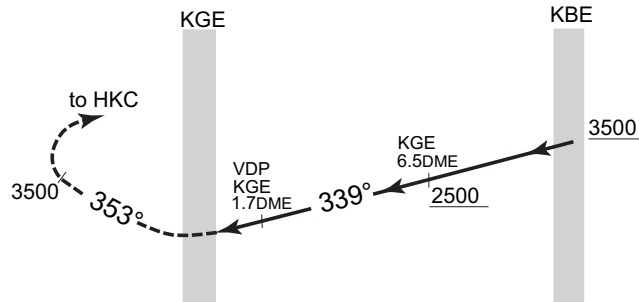
VOR/DME NR.1 RWY 34

KAGOSHIMA APP 126.0 –119.4 120.8 –261.2	KAJIKI VOR/DME 115.7 KGE $\equiv \equiv \equiv$ CH-104X 31°47'51"N/130°43'34"E	KAGOSHIMA TOWER 118.2 –126.2 –261.2	RADAR AVBL ATIS 127.05
---	---	--	-------------------------------



MISSED APPROACH

At KGE VOR/DME, turn right, climb via KGE R-353 to 3,500ft, then turn left, proceed to HKC VORTAC and hold at 4,500ft. Contact KAGOSHIMA APP.



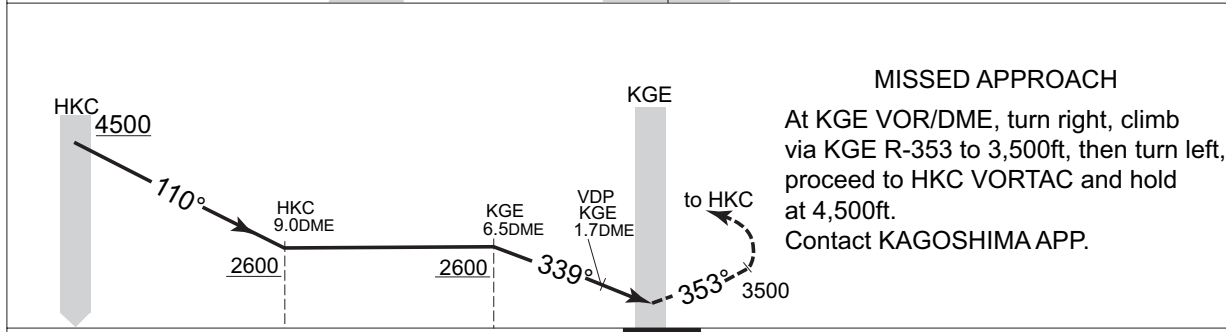
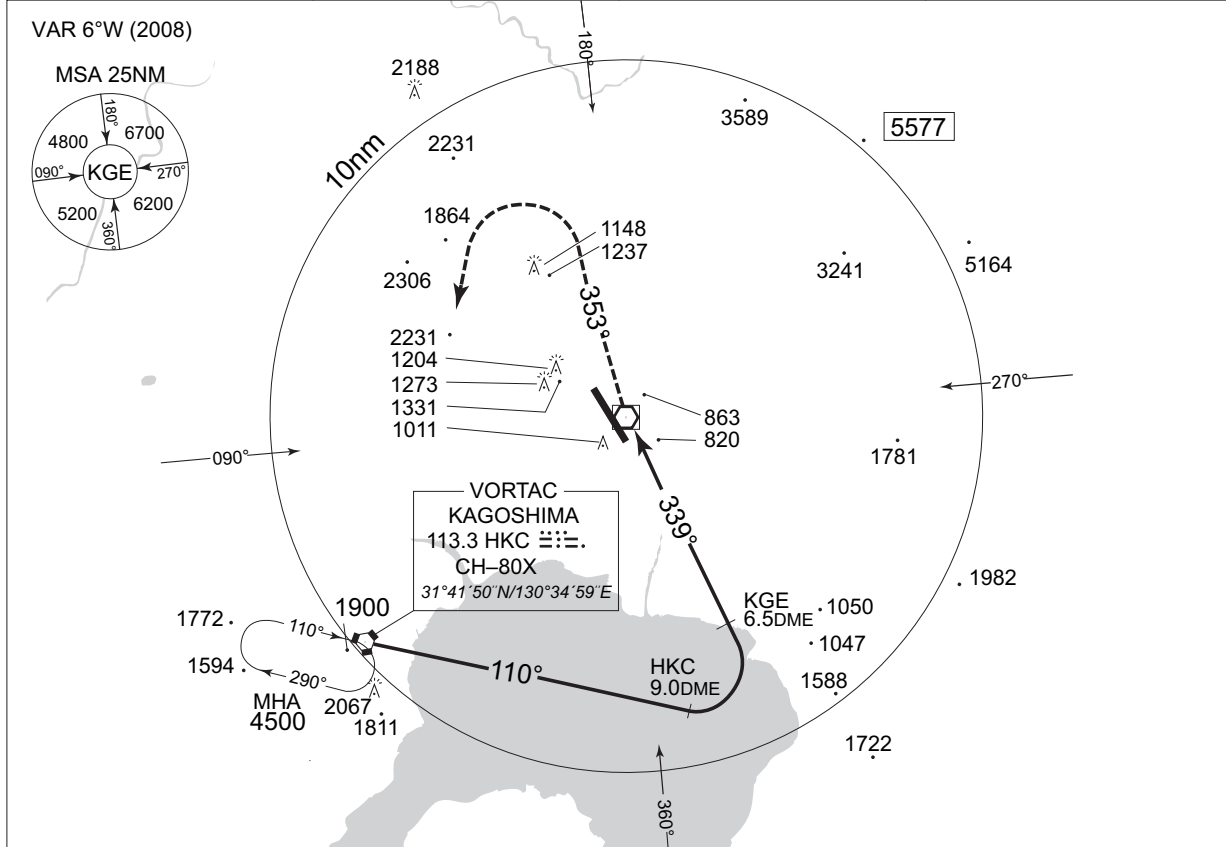
MINIMA		THR elev. 859	AD elev. 892	
CAT			CIRCLING	
	MDA(H)	RVR/CMV	MDA(H)	VIS
A	1350 (491)	1000	1660 (768)	1600
B		1200		1710 (818)
C			1600	
D				

INSTRUMENT APPROACH CHART

RJFK / KAGOSHIMA

VOR/DME NR.2 RWY 34

KAGOSHIMA APP 126.0 -119.4 120.8 -261.2	KAJIKI VOR/DME 115.7 KGE $\equiv \equiv \equiv$ CH-104X 31°47'51"N/130°43'34"E	KAGOSHIMA TOWER 118.2 -126.2 -261.2	RADAR AVBL ATIS 127.05
---	---	--	---------------------------



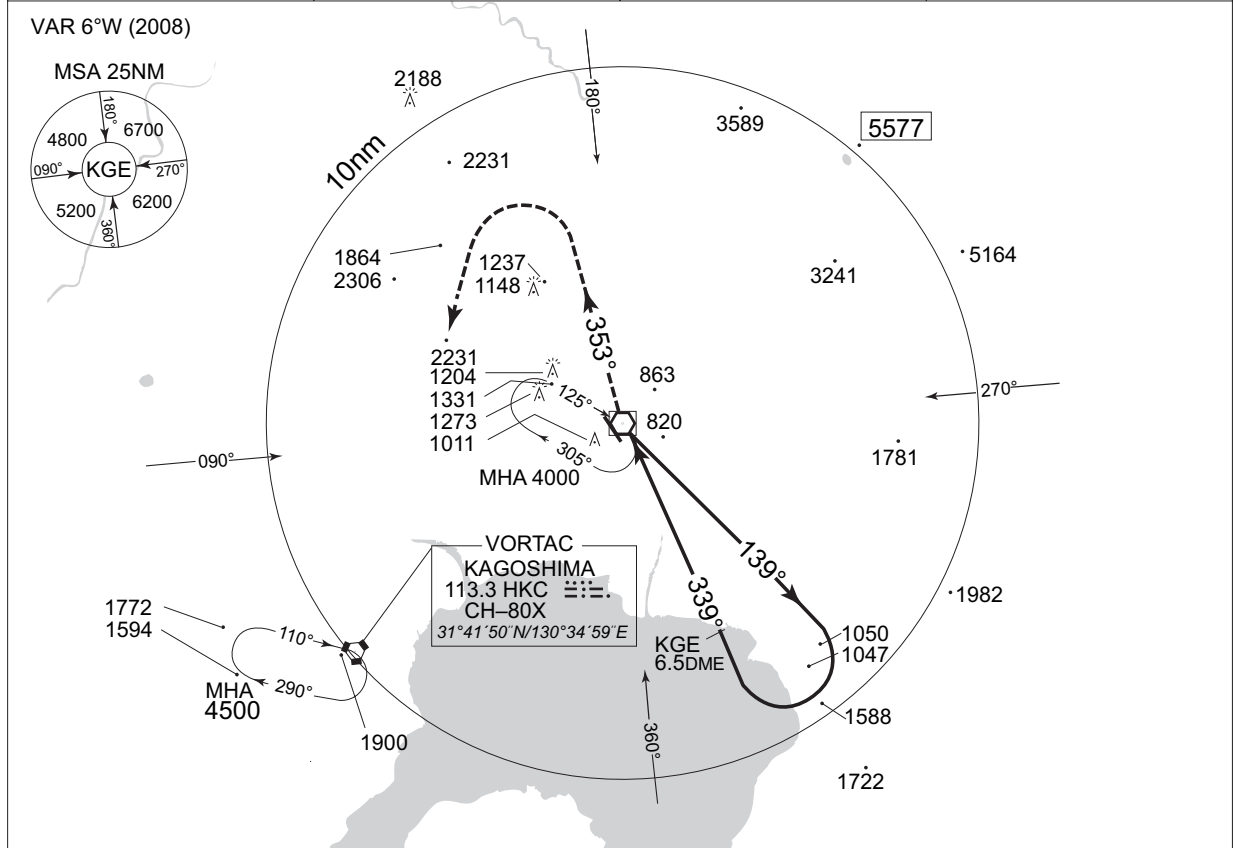
MINIMA		THR elev. 859		AD elev. 892	
CAT			CIRCLING		
	MDA(H)	RVR/CMV	MDA(H)	VIS	
A	1350 (491)	1000	1660 (768)	1600	
B		1200		2400	
C			1600	1710 (818)	3200
D					

INSTRUMENT APPROACH CHART

RJFK / KAGOSHIMA

VOR/DME NR.3 RWY 34

KAGOSHIMA APP 126.0 -119.4 120.8 -261.2	KAJIKI VOR/DME 115.7 KGE $\equiv \equiv \equiv$ CH-104X 31°47'51"N/130°43'34"E	KAGOSHIMA TOWER 118.2 -126.2 -261.2	RADAR AVBL ATIS 127.05
---	---	--	-------------------------------



Remain within KGE 10DME

MISSED APPROACH

At KGE VOR/DME, turn right, climb via KGE R-353 to 3,500ft, then turn left, proceed to HKC VORTAC and hold at 4,500ft.
Contact KAGOSHIMA APP.

to HKC

3500 353°

VDP KGE 1.7DME

KGE 4000

139°

KGE 6.5DME

3100

2500

339°

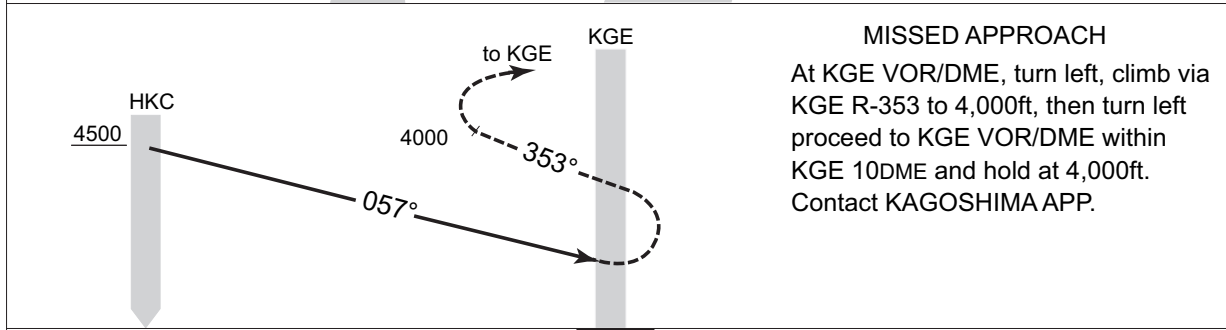
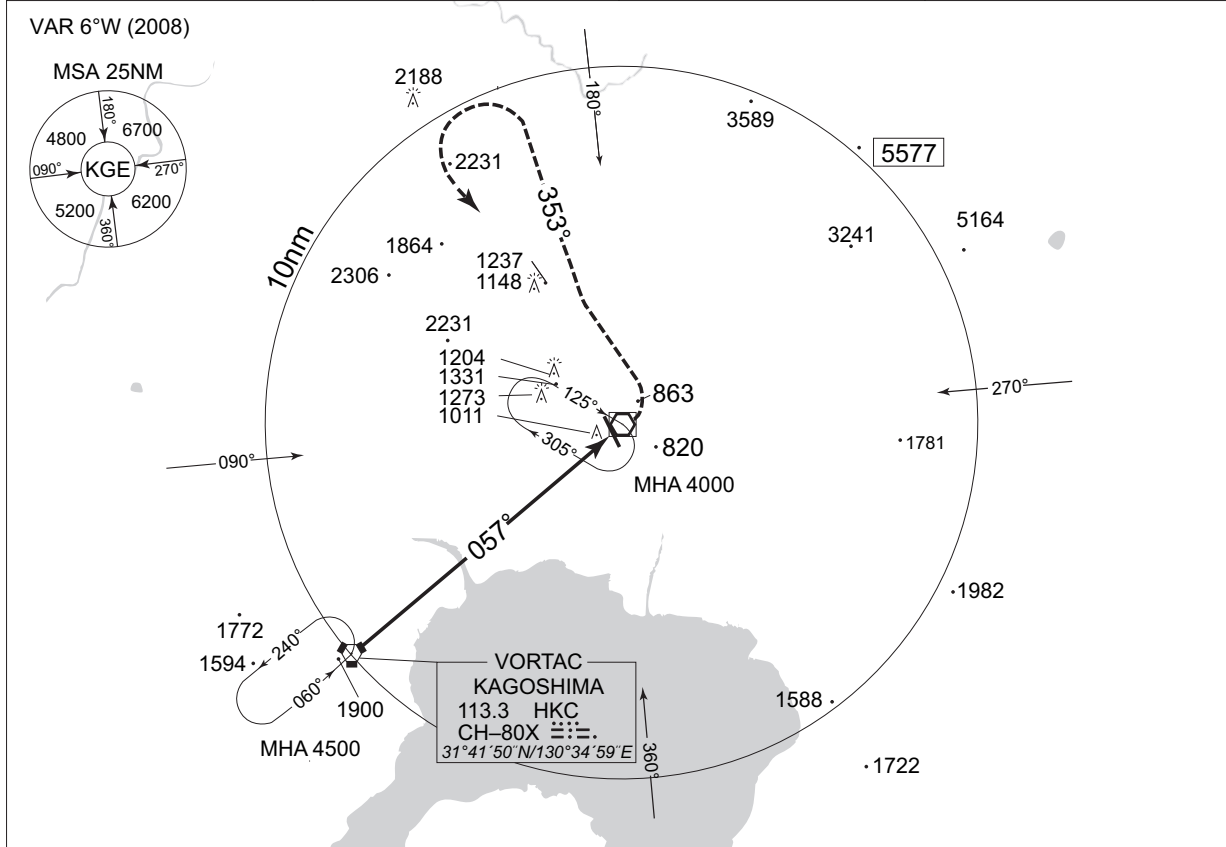
MINIMA		THR elev. 859	AD elev. 892	
CAT			CIRCLING	
	MDA(H)	RVR/CMV	MDA(H)	VIS
A	1350 (491)	1000	1660 (768)	1600
B		1200		1710 (818)
C			1600	
D				

INSTRUMENT APPROACH CHART

RJFK / KAGOSHIMA

VOR/DME A

KAGOSHIMA APP 126.0 -119.4 120.8 -261.2	KAJIKI VOR/DME 115.7 KGE $\equiv \equiv$ CH-104X 31°47'51"N/130°43'34"E	KAGOSHIMA TOWER 118.2 -126.2 -261.2	RADAR AVBL ATIS 127.05
---	--	--	---------------------------



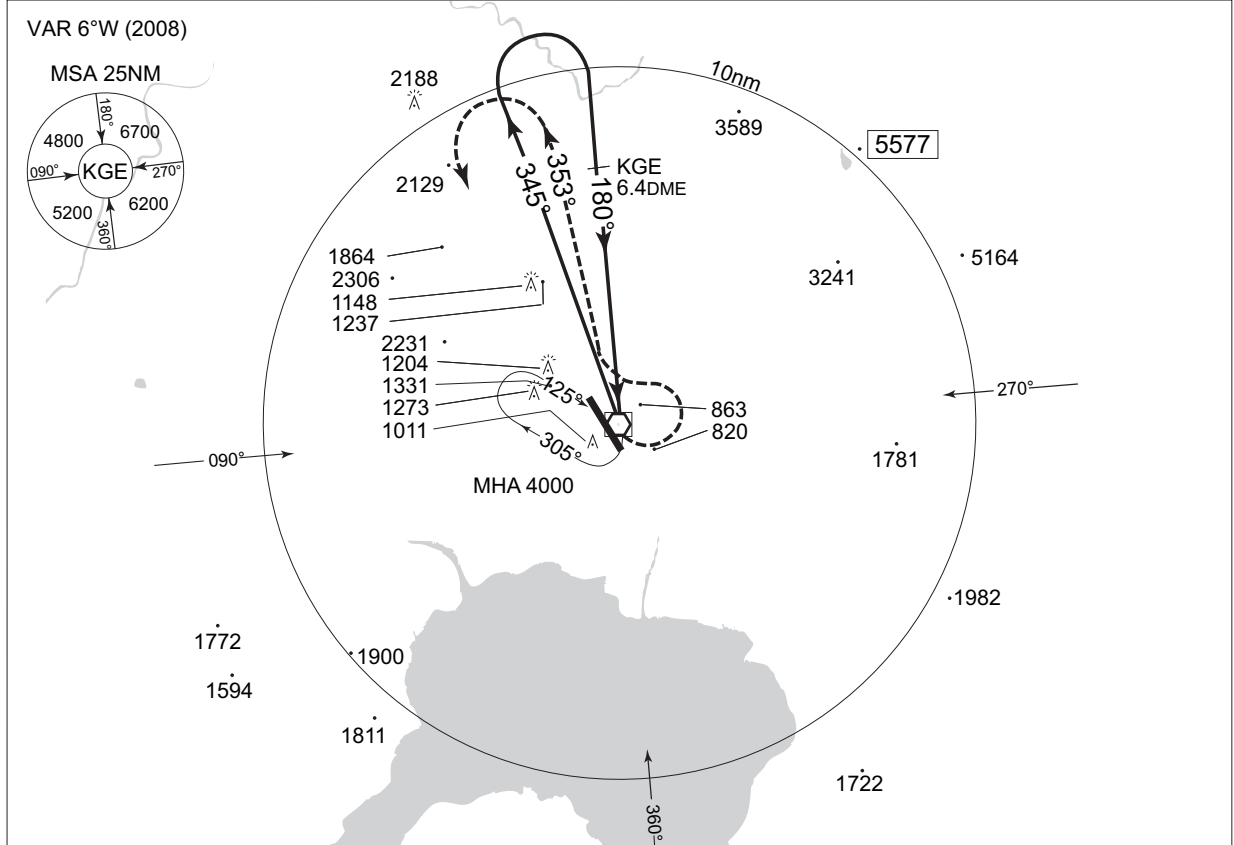
MINIMA		AD elev. 892
CAT	CIRCLING	
	MDA(H)	VIS
A	1660 (768)	1600
B		2400
C	1710 (818)	3200
D		

INSTRUMENT APPROACH CHART

RJFK / KAGOSHIMA

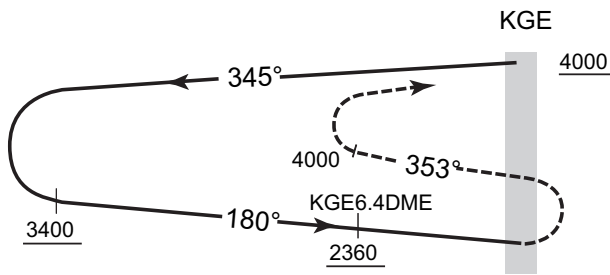
VOR/DME B

KAGOSHIMA APP 126.0 - 119.4 120.8 - 261.2	KAJIKI VOR/DME 115.7 KGE $\equiv \equiv \equiv$ CH-104X 31°47'51"N/130°43'34"E	KAGOSHIMA TOWER 118.2 - 126.2 - 261.2	RADAR AVBL ATIS 127.05
---	---	--	---------------------------



Remain within KGE 14DME

MISSED APPROACH



At KGE VOR/DME, turn left, climb via KGE R-353 to 4,000ft, then turn left, proceed to KGE VOR/DME within KGE 10DME and hold at 4,000ft. Contact KAGOSHIMA APP.

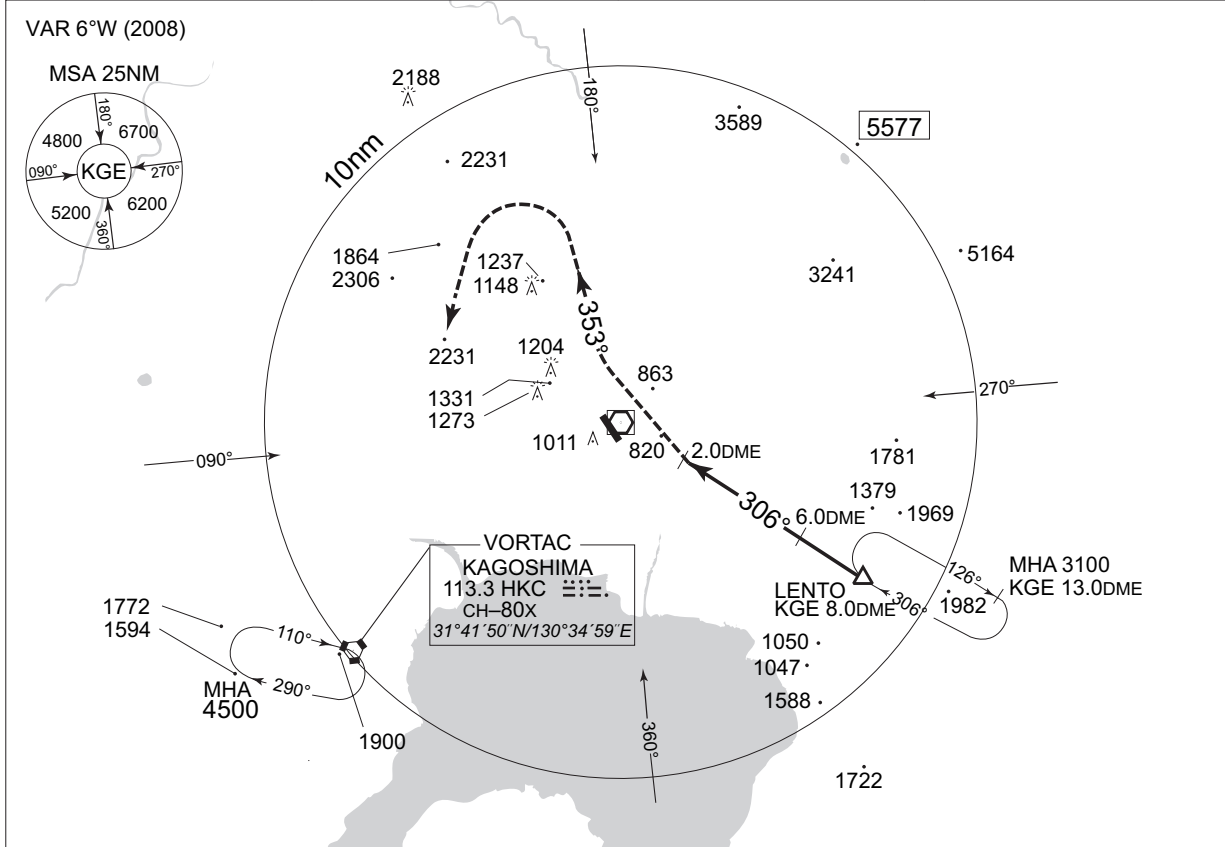
MINIMA		AD elev. 892
CAT	CIRCLING	
	MDA(H)	VIS
A	1660 (768)	1600
B		2400
C	1710 (818)	3200
D		

INSTRUMENT APPROACH CHART

RJFK / KAGOSHIMA

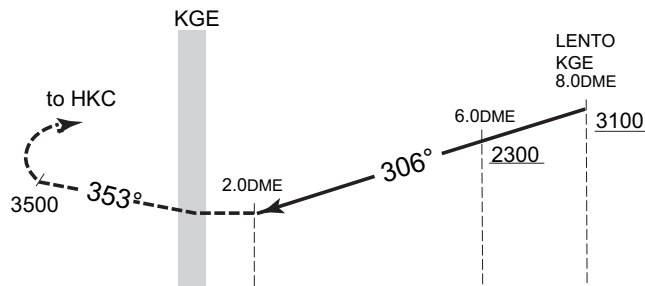
VOR/DME C

<p>KAGOSHIMA APP 126.0 –119.4 120.8 –261.2</p>	<p>KAJIKI VOR/DME 115.7 KGE $\equiv \equiv \equiv$ CH-104X 31°47'51"N/130°43'34"E</p>	<p>KAGOSHIMA TOWER 118.2 –126.2 –261.2</p>	<p>RADAR AVBL ATIS 127.05</p>
--	--	--	-----------------------------------



MISSED APPROACH

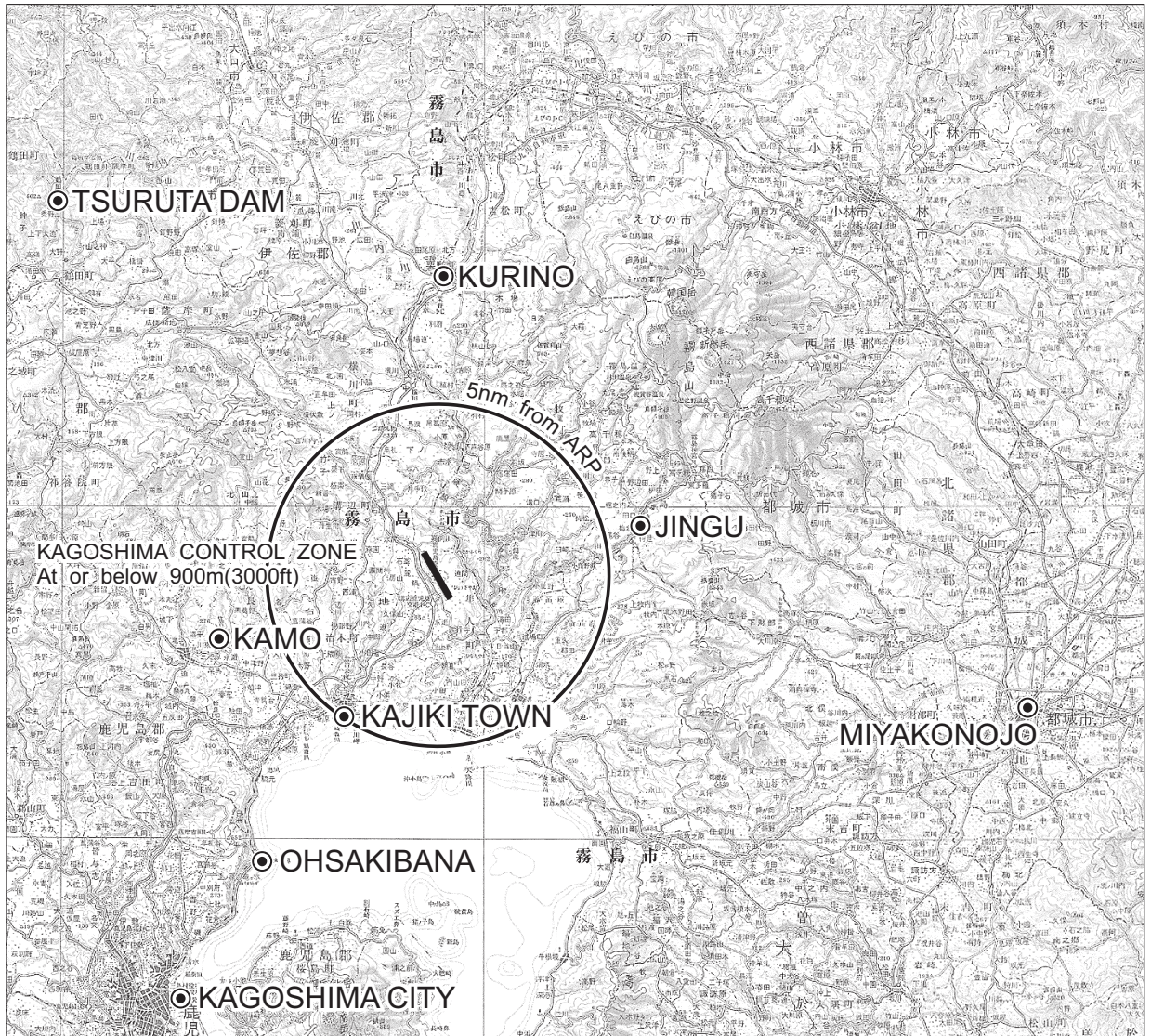
At 2.0DME prior to KGE VOR/DME, turn right, climb via KGE R-353 to 3,500ft, then turn left, proceed to HKC VORTAC and hold at 4,500ft. Contact KAGOSHIMA APP.



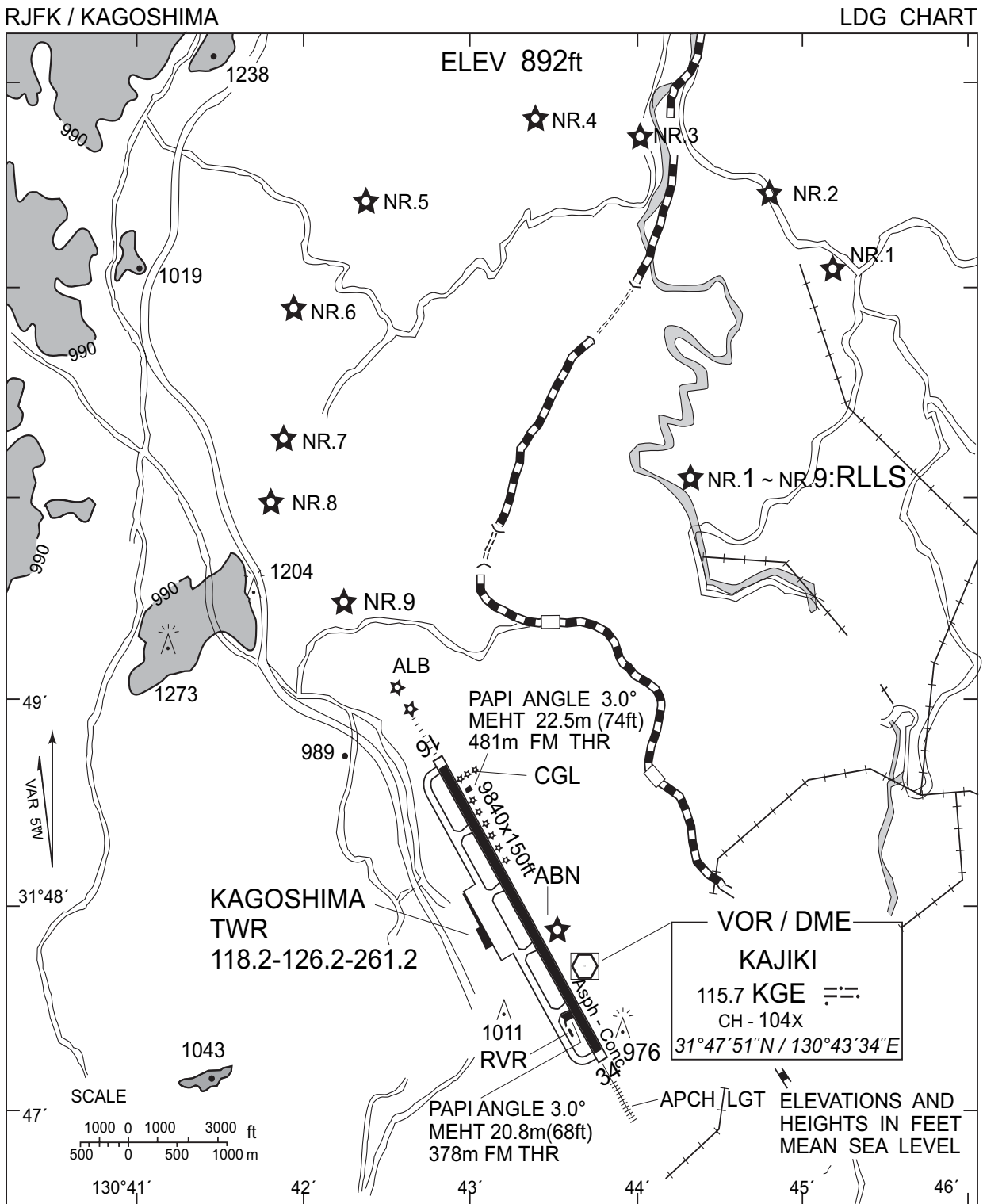
MINIMA		AD elev. 892
CAT	CIRCLING	
	MDA(H)	VIS
A	1660 (768)	1600
B		2400
C	1710 (818)	3200
D		

RJFK / KAGOSHIMA

Visual REP



Call sign	BRG / DIST from ARP	Remarks
栗野 Kurino	002°/8.5NM	JR駅 JR Station
都城 Miyakonojo	110°/18NM	JR駅 JR Station
加治木タウン Kajiki Town	215°/5NM	網掛川河口 River-mouth(The Amikake)
大崎鼻 Ohsakibana	215°/10NM	崎 Point
鹿児島シティ Kagoshima City	215°/15NM	港 Harbor
蒲生 Kamo	255°/8NM	住吉池 Pond
鶴田ダム Tsuruta Dam	320°/16NM	ダム Dam
神宮 Jingu	080°/5.7NM	JR駅 JR Station

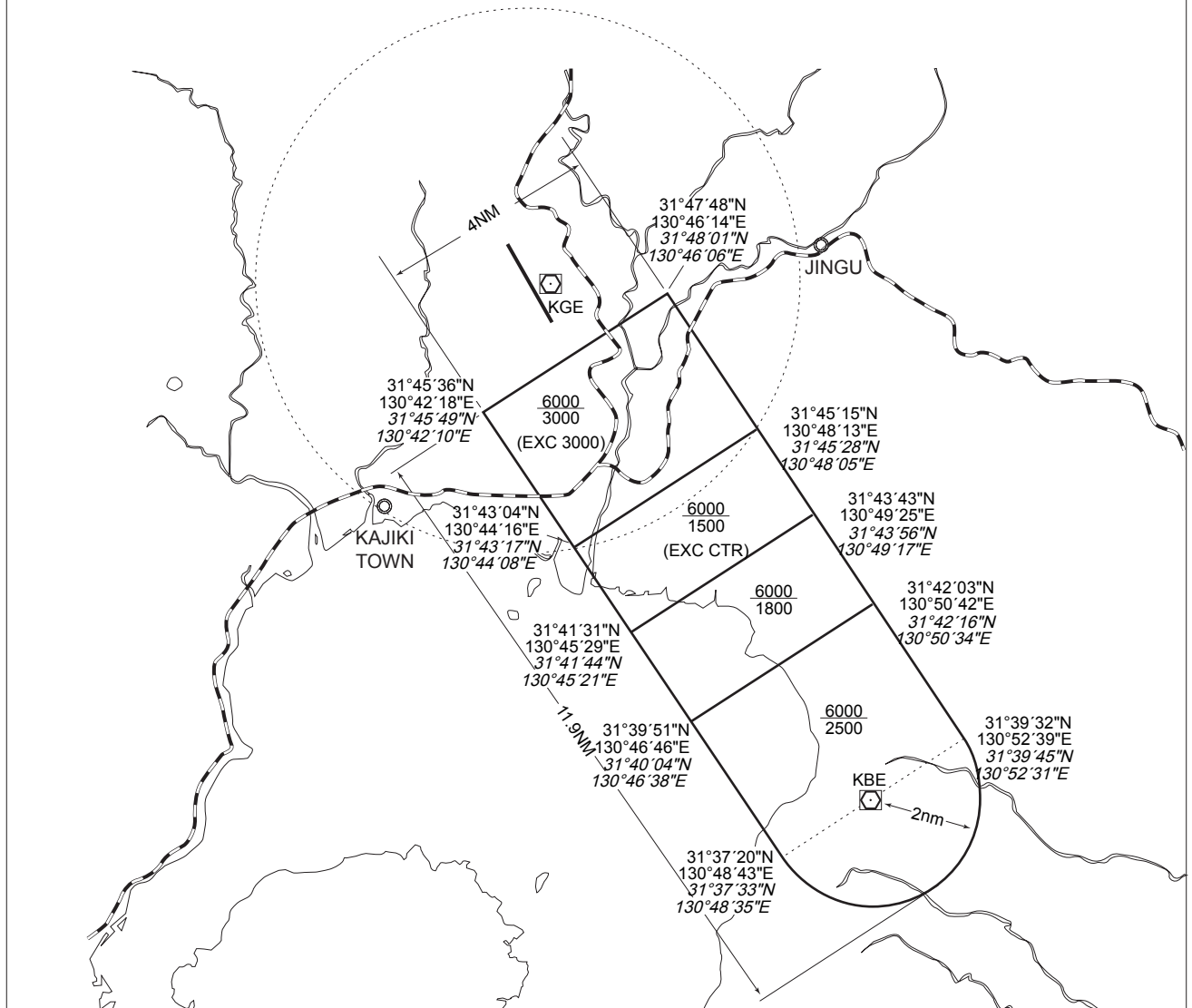


RUNWAY LEAD - IN LIGHTING SYSTEM :

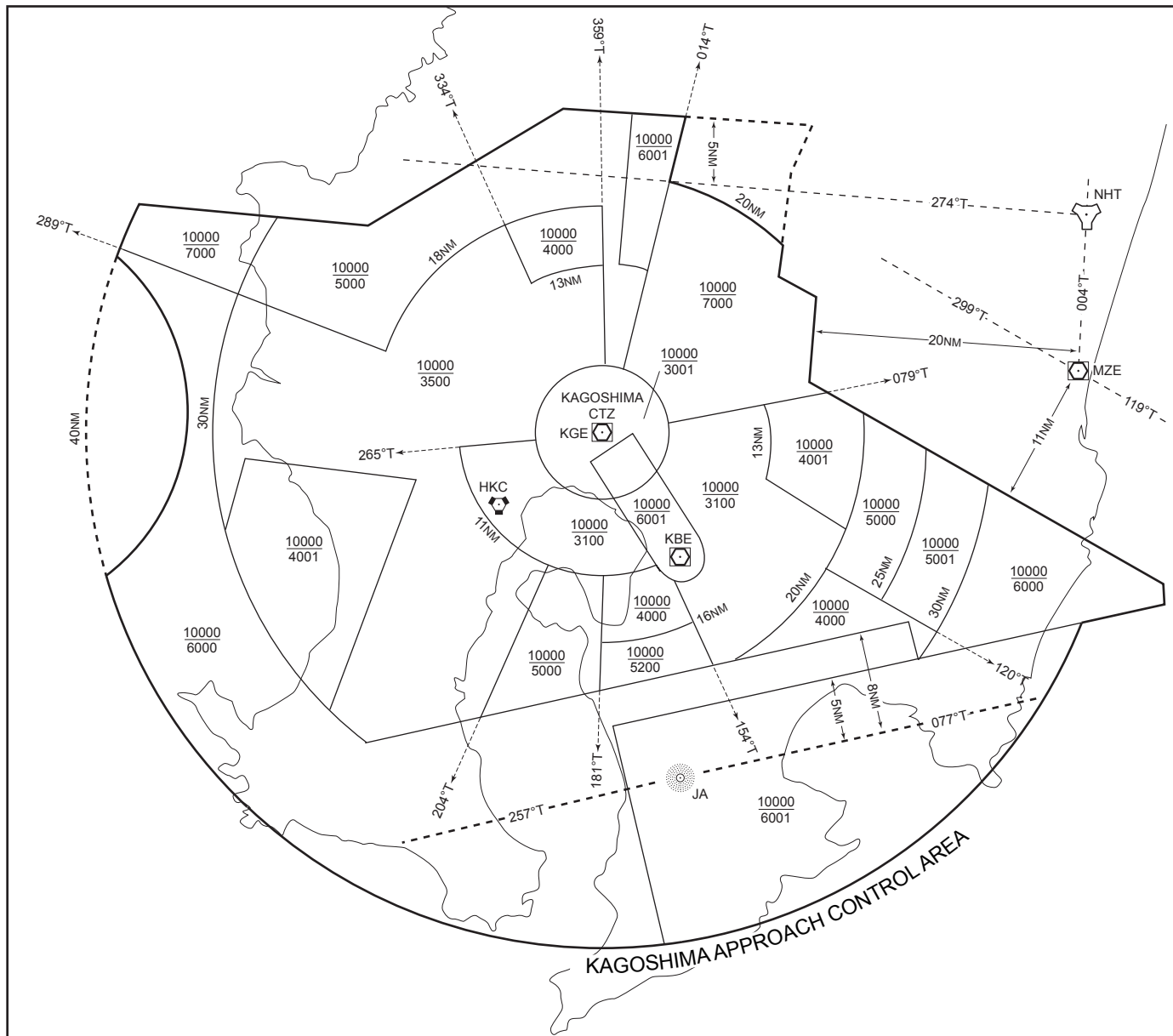
NR.1~NR.9 FLASHING WHITE

鹿児島特別管制区
Kagoshima Positive Control Area

NAME	LATERAL LIMITS	UPPER LIMIT (AMSL)	UNIT PROVIDING SERVICE	REMARKS
		LOWER LIMIT (AMSL) M(ft)		
1	2	3	4	5
鹿児島 KAGOSHIMA	下記に示される区域 The area shown below		Primary Kagoshima APP Kagoshima Radar 126.0 119.4 120.8 261.2 Secondary Kagoshima TWR 118.2 126.2 261.2	当該空域を飛行しようとする航空機は、鹿児島アプローチ(鹿児島レーダー)又は鹿児島タワーに連絡し、コールサイン、現在位置、高度及び意図を通報し指示を受けること。 Pilot of aircraft operating in this area shall contact Kagoshima Approach (Kagoshima Radar) or Kagoshima Tower for ATC instructions giving informations on aircraft identification, positions, altitude and pilot's intentions.

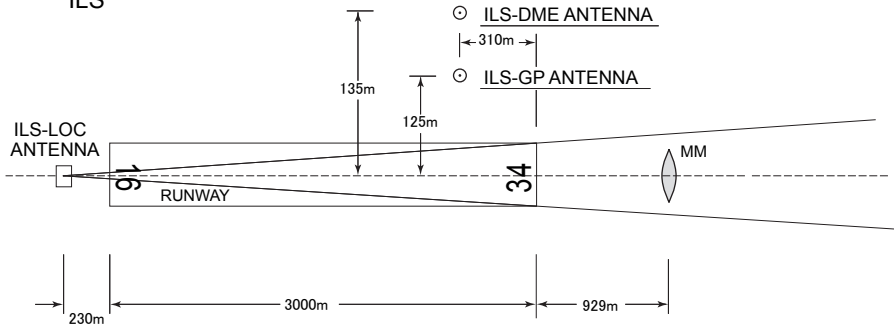


鹿児島ターミナルコントロールエリア Kagoshima Terminal Control Area



KAGOSHIMA AIRPORT

ILS



- REMARKS :
- | | |
|-------------------------|---------------|
| 1. LOC beam BRG(MAG) | 336° |
| 2. HGT of ILS REF datum | 17.2m (56ft) |
| 3. GP Angle | 3.0° |
| 4. ELEV of ILS-DME | 268.7 (882ft) |