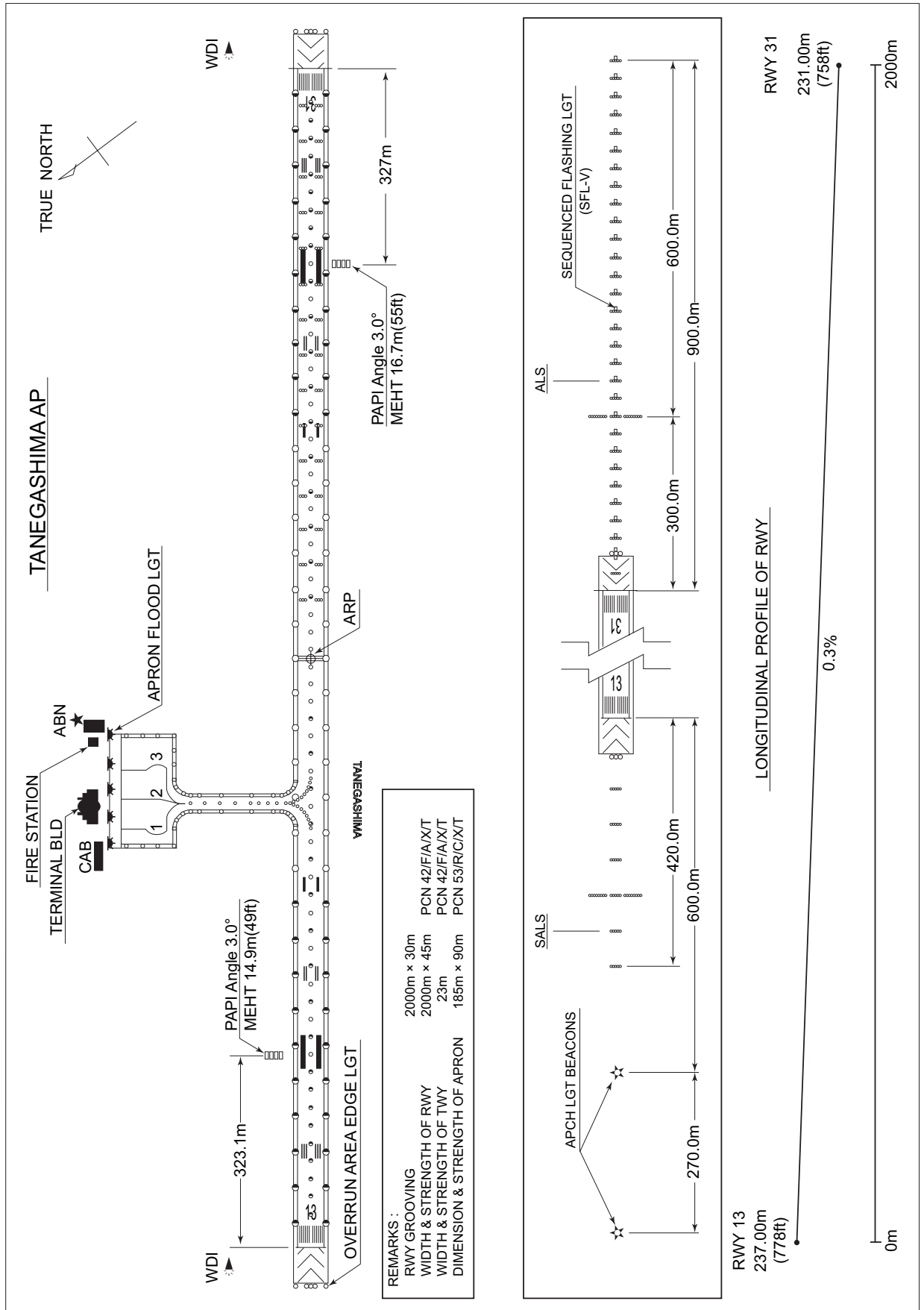


RJFG / TANEGASHIMA

AD CHART



STANDARD DEPARTURE CHART - INSTRUMENT

RJFG / TANEGASHIMA

SID

QUEEN ONE DEPARTRE

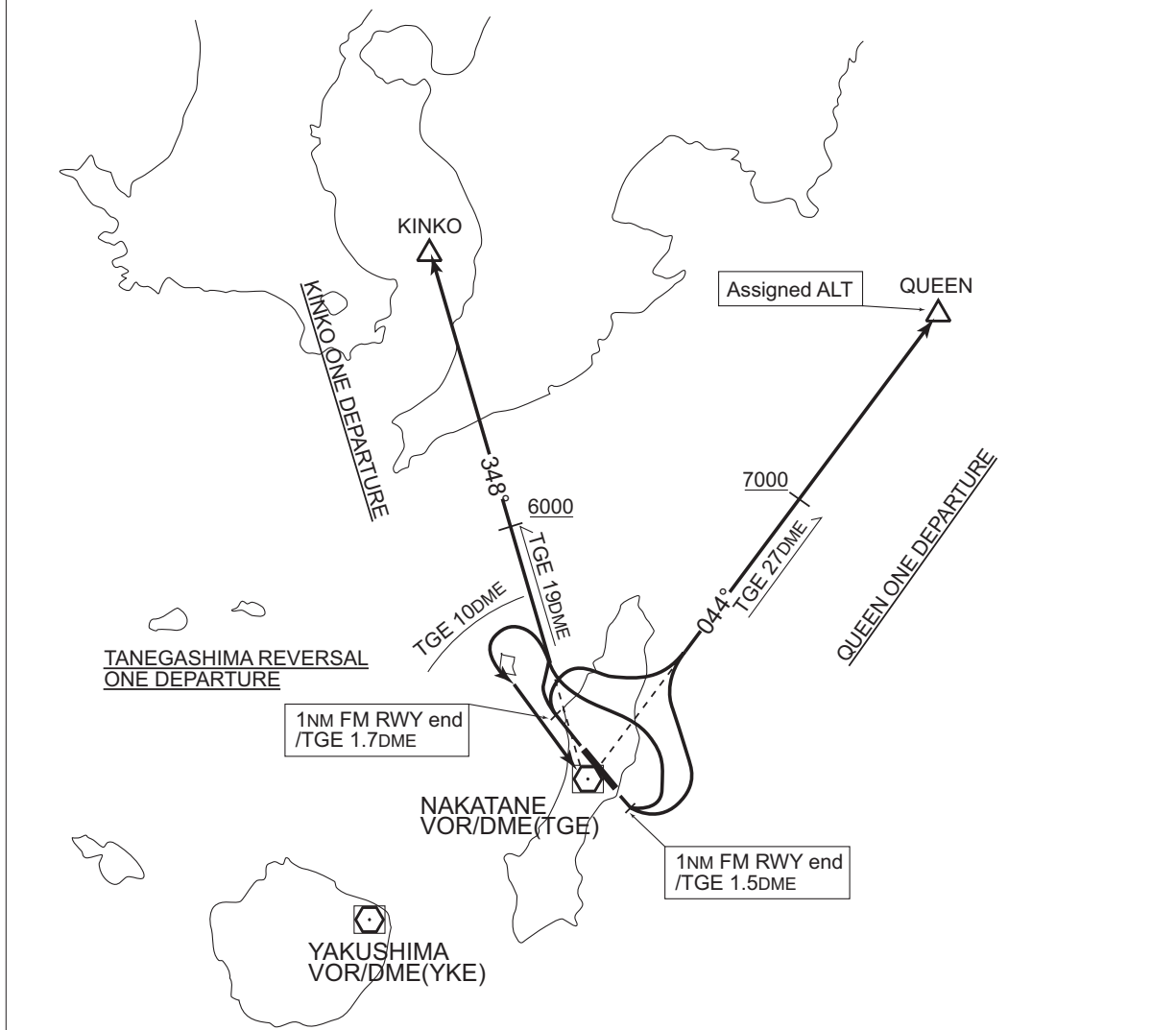
RWY13: Climb RWY HDG until 1NM from RWY end/TGE 1.5DME, turn left,...
 RWY31: Climb RWY HDG until 1NM from RWY end/TGE 1.7DME, turn right,...
 ...Climb via TGE R-044 to QUEEN.
 Cross TGE R-044/27DME at or above 7,000ft, cross QUEEN at assigned altitude.

KINKO ONE DEPARTURE

RWY13: Climb RWY HDG until 1NM from RWY end/TGE 1.5DME, turn left,...
 RWY31: Climb RWY HDG until 1NM from RWY end/TGE 1.7DME, turn right,...
 ...Climb via TGE R-348 to KINKO.
 Cross TGE R-348/19DME at or above 6,000ft.

TANEGASHIMA REVERSAL ONE DEPARTURE

RWY13: Climb RWY HDG until 1NM from RWY end/TGE 1.5DME, turn left,...
 RWY31: Climb RWY HDG until 1NM from RWY end/TGE 1.7DME, turn right,...
 ...Climb via TGE R-348, then turn left proceed to TGE VOR/DME within TGE 10DME.



STANDARD ARRIVAL CHART - INSTRUMENT

RJFG / TANEGASHIMA

STAR

KAGYA ARRIVAL

From over TEPPPO, proceed via TGE 12DME counterclockwise ARC to KAGYA.
Cross KAGYA at or above 6,000ft.

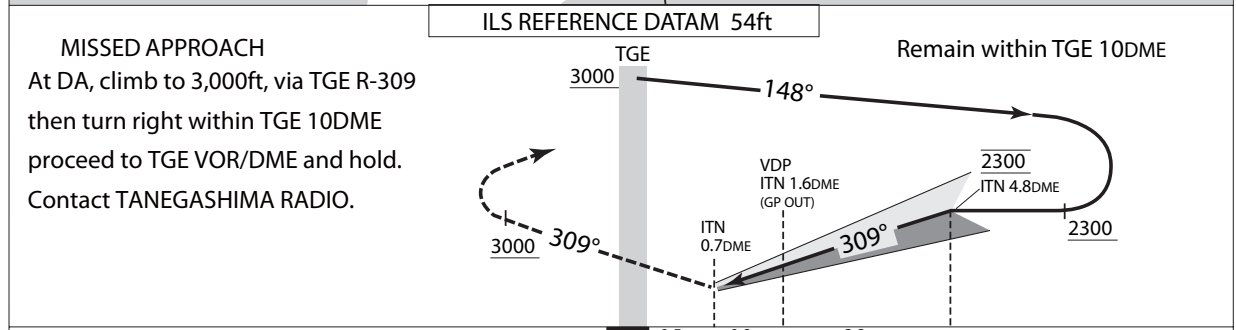
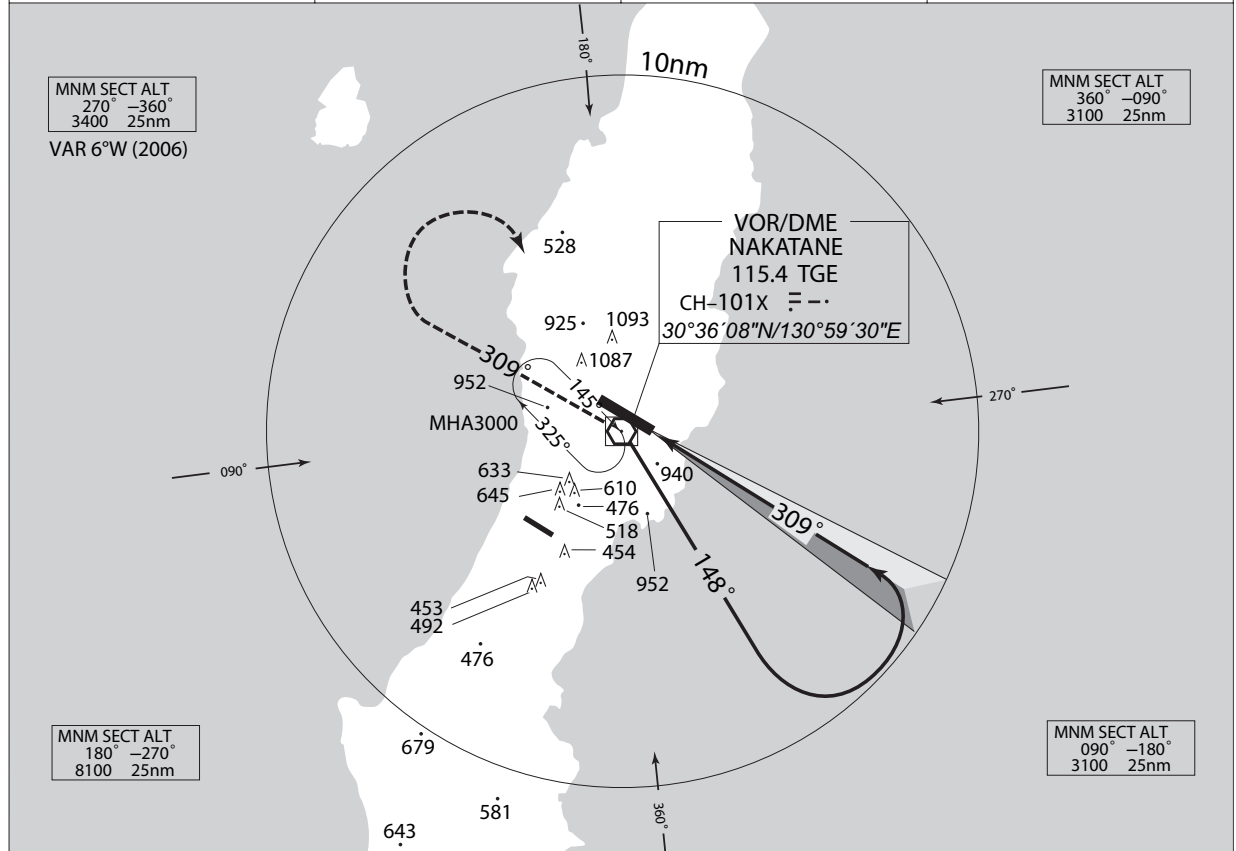


INSTRUMENT APPROACH CHART

RJFG / TANEGASHIMA

VOR/DME/ILS RWY31

| | | | |
|--|--|-------------------------------------|----------|
| FUKUOKA CONTROL 133.85 - 315.3 132.6 - 276.8 | ILS - LOC 108.95 ITN Ⅲ ILS-GP 329.15 ILS-DME CH-26Y | TANEGASHIMA RADIO 118.75 - 126.2 | NO RADAR |
|--|--|-------------------------------------|----------|



| CAT | THR elev. 758 | | AD elev. 768 | | | | |
|-----|---------------|---------|--------------|------------|------------|------|------|
| | CAT I | | LOC | | CIRCLING | | |
| | DA(H) | RVR/CMV | MDA(H) | RVR/CMV | MDA(H) | VIS | |
| A | 967 (209) | 600 | 1220 (462) | 1000 | 1240 (472) | 1600 | |
| B | | | | 1200 | | | |
| C | | | | 1600 | | | 2400 |
| D | | | | 1320 (552) | | | 3200 |

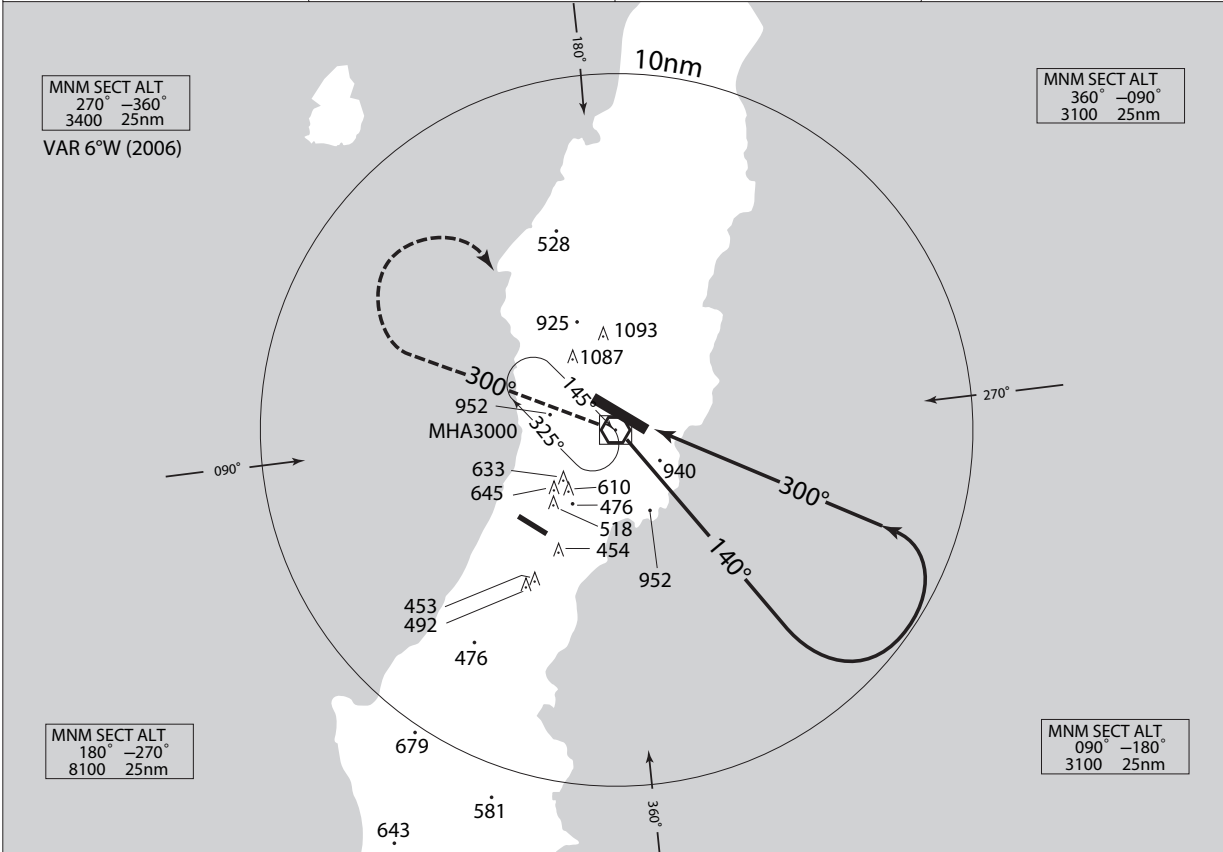
Circling to South side of RWY only.

INSTRUMENT APPROACH CHART

RJFG / TANEGASHIMA

VOR/DME RWY31

| | | | |
|--|---|-------------------------------------|----------|
| FUKUOKA CONTROL 133.85 - 315.3 132.6 - 276.8 | NAKATANE VOR/DME 115.4 TGE $\equiv - \cdot$ CH - 101X 30°36'08"N/130°59'30"E | TANEGASHIMA RADIO 118.75 - 126.2 | NO RADAR |
|--|---|-------------------------------------|----------|



MISSED APPROACH
At TGE VOR/DME, climb to 3,000ft, via TGE R-300, then turn right within TGE 10DME proceed to TGE VOR/DME and hold.
Contact TANEGASHIMA RADIO.

Remain within TGE 10DME

| | | | | |
|--------|---------------|---------|--------------|------------|
| MINIMA | THR elev. 758 | | AD elev. 768 | |
| CAT | | | CIRCLING | |
| | MDA(H) | RVR/CMV | MDA(H) | VIS |
| A | 1240 (482) | 1000 | 1240 (472) | 1600 |
| B | | 1200 | | 2400 |
| C | | | | |
| D | | 1600 | | 1320 (552) |

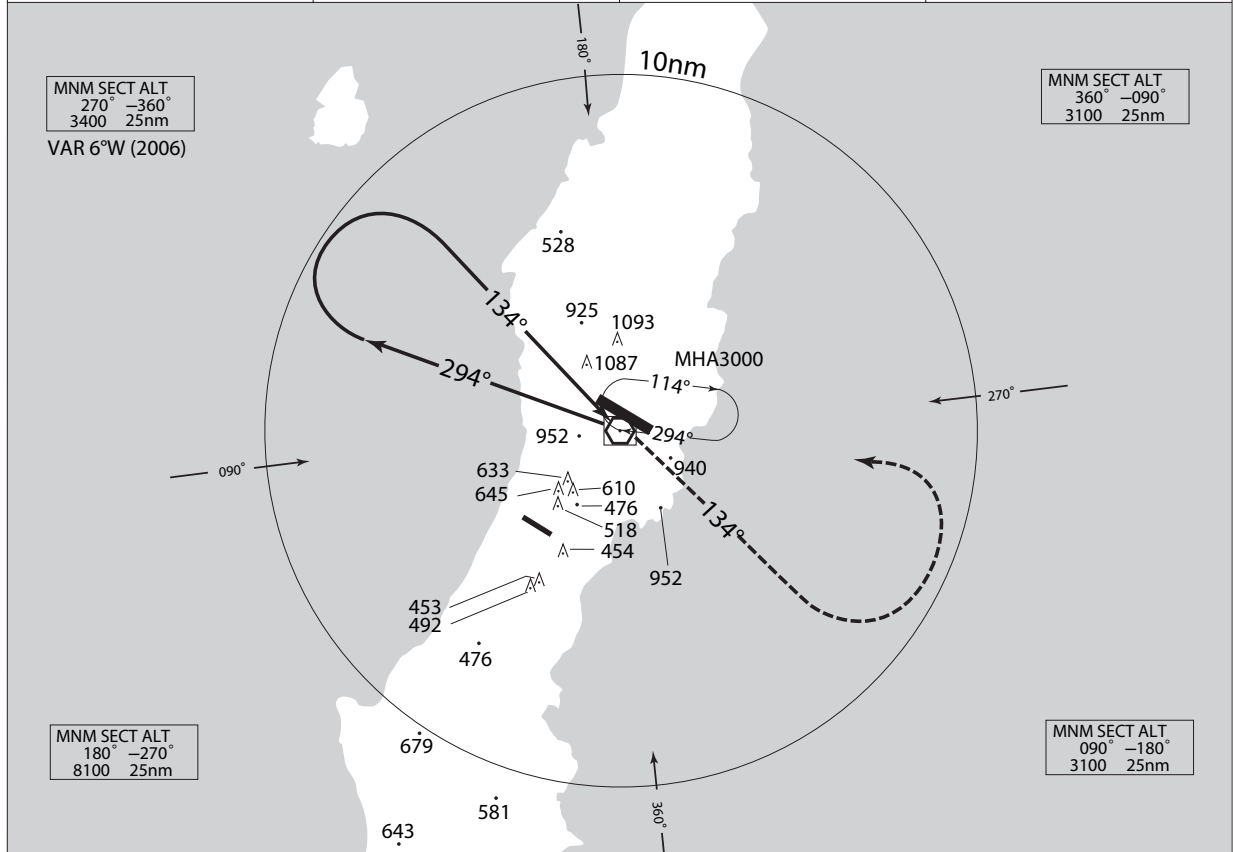
Circling to South side of RWY only.

INSTRUMENT APPROACH CHART

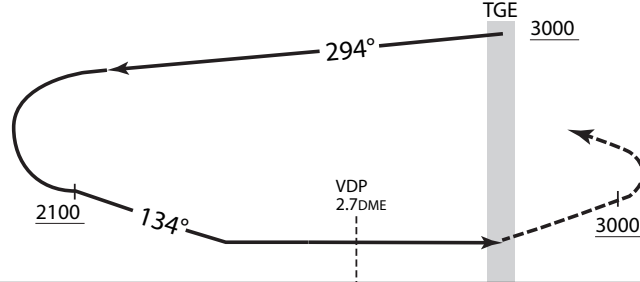
RJFG / TANEGASHIMA

VOR/DME RWY13

| | | | |
|--|--|-------------------------------------|----------|
| FUKUOKA CONTROL 133.85 - 315.3 132.6 - 276.8 | NAKATANE VOR/DME 115.4 TGE CH - 101X 30°36'08"N/130°59'30"E | TANEGASHIMA RADIO 118.75 - 126.2 | NO RADAR |
|--|--|-------------------------------------|----------|



Remain within TGE 10DME



MISSED APPROACH
At TGE VOR/DME, climb to 3,000ft, via TGE R-134, then turn left within TGE 10DME proceed to TGE VOR/DME and hold.
Contact TANEGASHIMA RADIO.

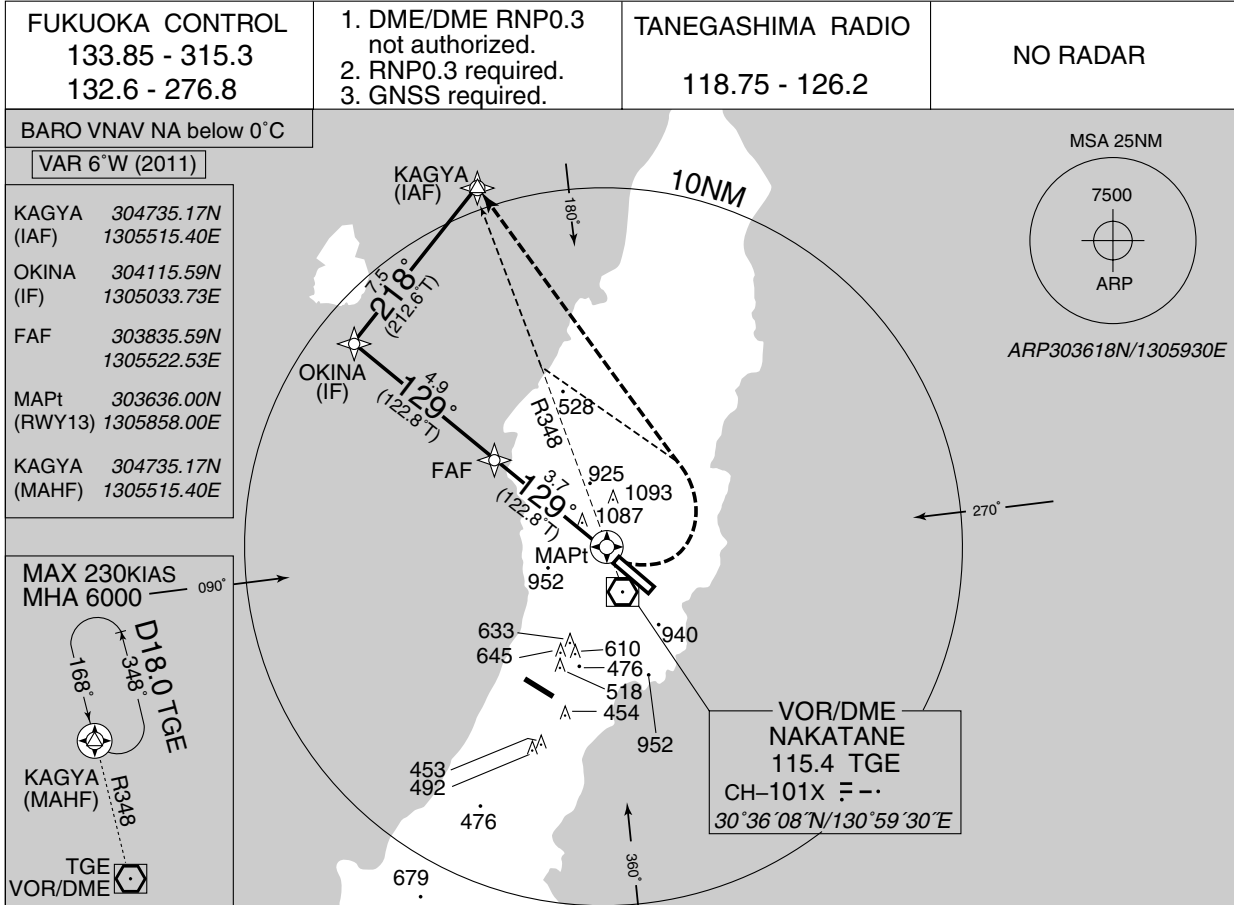
| MINIMA | | THR elev. 778 | AD elev. 768 | |
|--------|------------|---------------|--------------|-----|
| CAT | CIRCLING | | MDA(H) | VIS |
| | MDA(H) | CMV | | |
| A | 1400 (632) | 1400 | - | - |
| B | | 1500 | | |
| C | | 1600 | | |
| D | | 1800 | | |

Circling to land RWY31 not authorized.

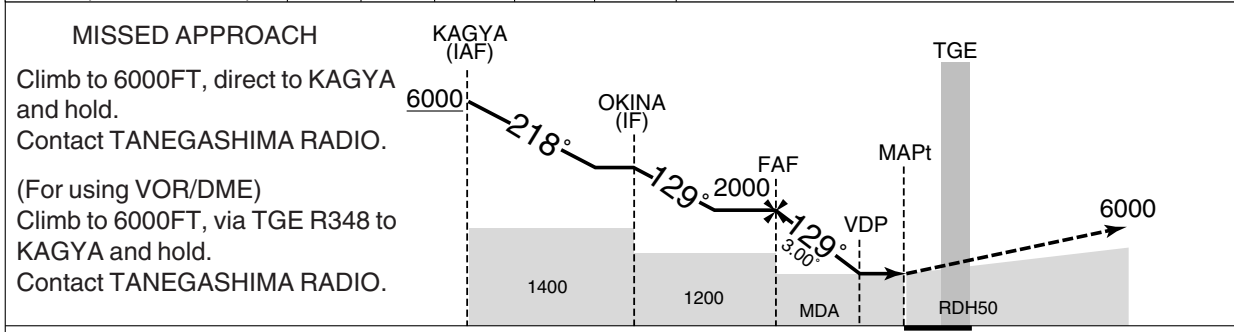
INSTRUMENT APPROACH CHART

RJFG / TANEGASHIMA

RNAV(GNSS) RWY13



| | | | | | |
|----------------------|------|------|------|------|------|
| NM to Next Fix | FAF | 3 | 2 | 1 | MAPt |
| ALT (3.0° APCH Path) | 2000 | 1782 | 1464 | 1145 | — |



| MINIMA | | THR elev. 778 | | AD elev. 768 | | |
|---------------|------------|---------------|------------|--------------|----------|-----|
| CAT | LNAV/VNAV | | LNAV | | CIRCLING | |
| | DA(H) | CMV | MDA(H) | CMV | MDA(H) | VIS |
| A | 1140 (362) | 1200 | 1140 (372) | 1200 | — | — |
| B | | 1300 | | 1300 | | |
| C | | 1400 | | 1400 | | |
| D | | 1600 | | 1600 | | |

Circling to land RWY31 not authorized.

RJFG / TANEGASHIMA

Visual REP

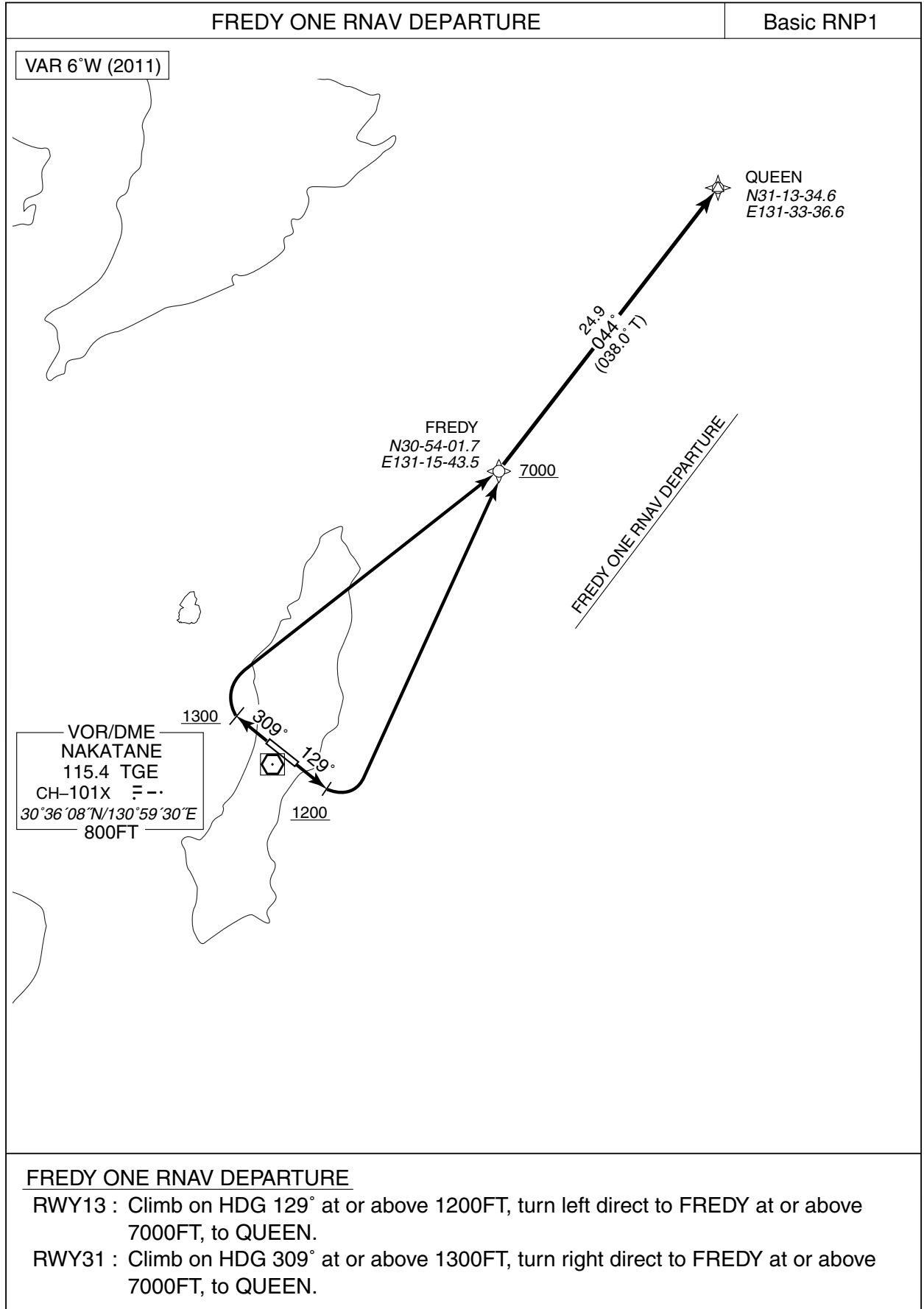


| Call sign | BRG / DIST from ARP | Remarks |
|---------------------|---------------------|--------------------|
| 喜志鹿崎 Kishigazaki | 014°/14.6NM | 灯台 Lighthouse |
| 西之表 Nishinoomote | 359°/ 7.5NM | 西之表港 Harbor |
| 10NM W | 270°/10.0NM | 海上 Over the sea |
| 島間 Shimama | 219°/10.5NM | 港 Harbor |
| 竹崎 Takezaki | 187°/12.9NM | 灯台 Lighthouse |

STANDARD DEPARTURE CHART -INSTRUMENT

RJFG / TANEGASHIMA

➔ RNAV SID



STANDARD DEPARTURE CHART -INSTRUMENT

RJFG / TANEGASHIMA

➔ RNAV SID

FREDY ONE RNAV DEPARTURE

RWY13

| Rcmd. Path Terminator | Fix ID (Waypoint Name) | Fly Over | Distance (NM) | MAG Track (TRUE Track) | Turn Direction | Altitude (FT) | Speed Limit (KIAS) | Vertical Angle | Navigation Performance |
|-----------------------|------------------------|----------|---------------|------------------------|----------------|---------------|--------------------|----------------|------------------------|
| VA | — | — | — | 129° (122.9°) | — | +1200 | — | — | Basic RNP1 |
| DF | FREDY | — | — | — | L | +7000 | — | — | Basic RNP1 |
| TF | QUEEN | — | 24.9 | 044° (038.0°) | — | — | — | — | Basic RNP1 |

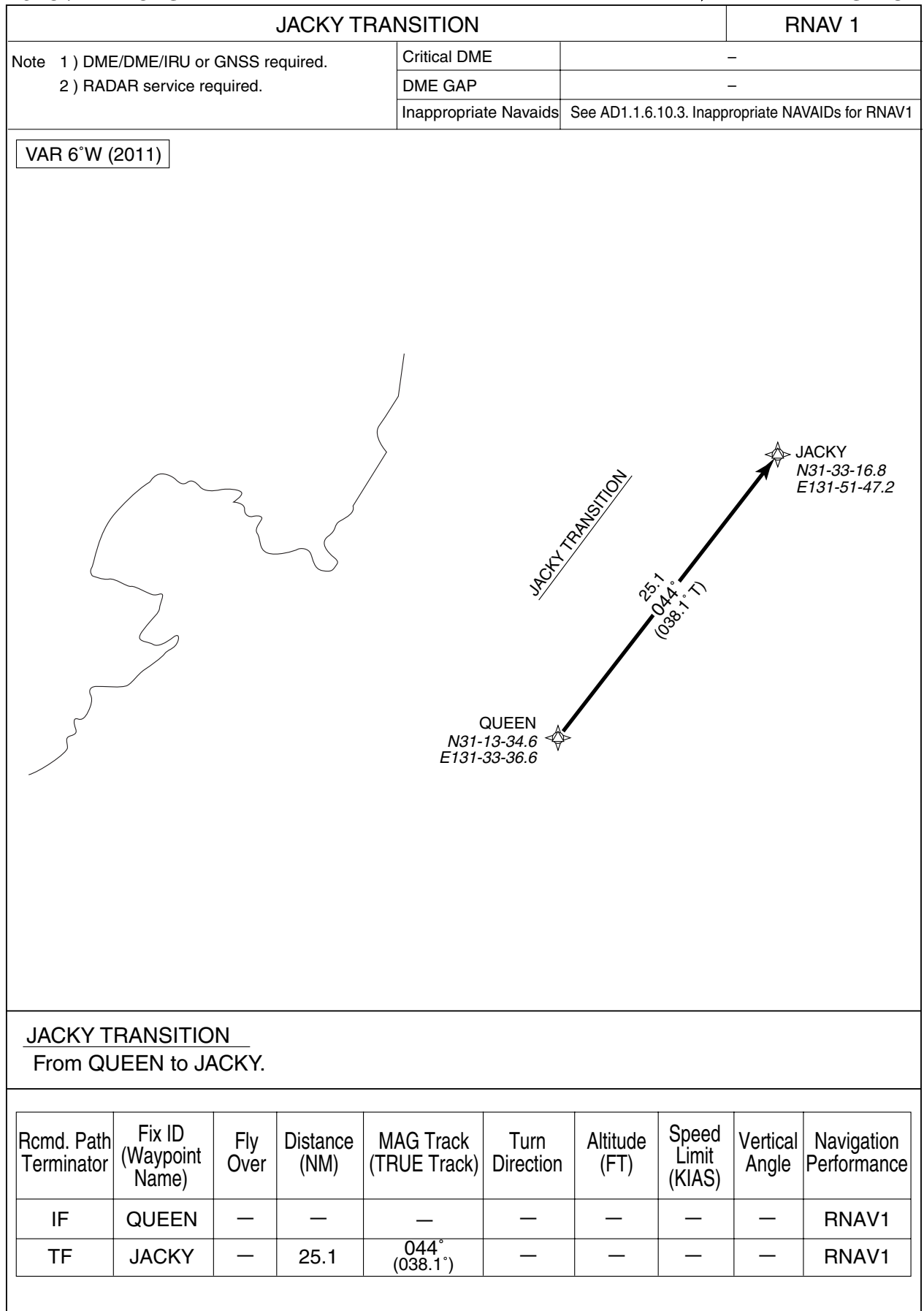
RWY31

| Rcmd. Path Terminator | Fix ID (Waypoint Name) | Fly Over | Distance (NM) | MAG Track (TRUE Track) | Turn Direction | Altitude (FT) | Speed Limit (KIAS) | Vertical Angle | Navigation Performance |
|-----------------------|------------------------|----------|---------------|------------------------|----------------|---------------|--------------------|----------------|------------------------|
| VA | — | — | — | 309° (302.9°) | — | +1300 | — | — | Basic RNP1 |
| DF | FREDY | — | — | — | R | +7000 | — | — | Basic RNP1 |
| TF | QUEEN | — | 24.9 | 044° (038.0°) | — | — | — | — | Basic RNP1 |

STANDARD DEPARTURE CHART -INSTRUMENT

RJFG / TANEGASHIMA

➔ RNAV TRANSITION



STANDARD DEPARTURE CHART -INSTRUMENT

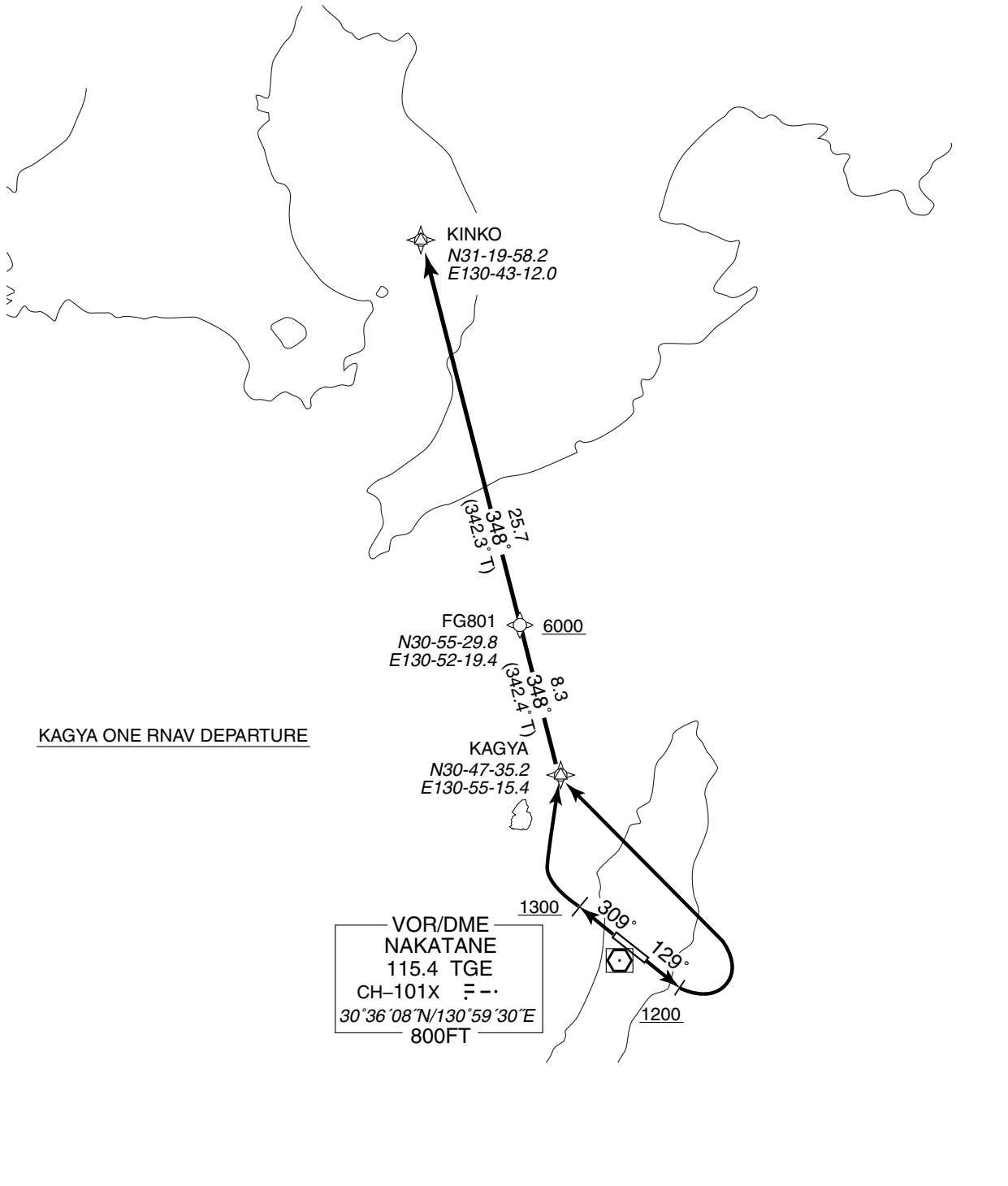
RJFG / TANEGASHIMA

➔ RNAV SID

KAGYA ONE RNAV DEPARTURE

Basic RNP1

VAR 6°W (2011)



KAGYA ONE RNAV DEPARTURE

RWY13 : Climb on HDG 129° at or above 1200FT, turn left direct to KAGYA, to FG801 at or above 6000FT, to KINKO.

RWY31 : Climb on HDG 309° at or above 1300FT, turn right direct to KAGYA, to FG801 at or above 6000FT, to KINKO.

STANDARD DEPARTURE CHART -INSTRUMENT

RJFG / TANEGASHIMA

➔ RNAV SID

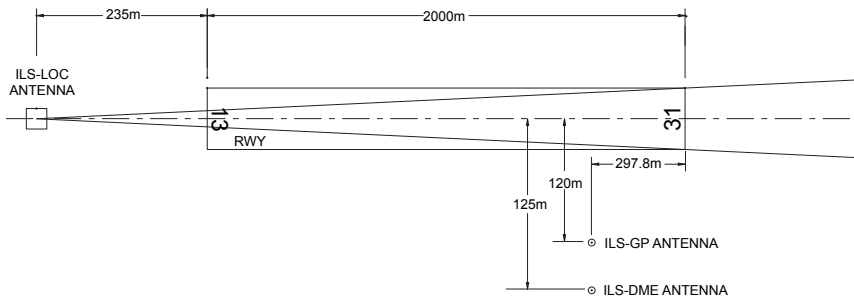
KAGYA ONE RNAV DEPARTURE

RWY13

| Rcmd. Path Terminator | Fix ID (Waypoint Name) | Fly Over | Distance (NM) | MAG Track (TRUE Track) | Turn Direction | Altitude (FT) | Speed Limit (KIAS) | Vertical Angle | Navigation Performance |
|-----------------------|------------------------|----------|---------------|------------------------|----------------|---------------|--------------------|----------------|------------------------|
| VA | — | — | — | 129° (122.9°) | — | +1200 | — | — | Basic RNP1 |
| DF | KAGYA | — | — | — | L | — | — | — | Basic RNP1 |
| TF | FG801 | — | 8.3 | 348° (342.4°) | — | +6000 | — | — | Basic RNP1 |
| TF | KINKO | — | 25.7 | 348° (342.3°) | — | — | — | — | Basic RNP1 |

RWY31

| Rcmd. Path Terminator | Fix ID (Waypoint Name) | Fly Over | Distance (NM) | MAG Track (TRUE Track) | Turn Direction | Altitude (FT) | Speed Limit (KIAS) | Vertical Angle | Navigation Performance |
|-----------------------|------------------------|----------|---------------|------------------------|----------------|---------------|--------------------|----------------|------------------------|
| VA | — | — | — | 309° (302.9°) | — | +1300 | — | — | Basic RNP1 |
| DF | KAGYA | — | — | — | R | — | — | — | Basic RNP1 |
| TF | FG801 | — | 8.3 | 348° (342.4°) | — | +6000 | — | — | Basic RNP1 |
| TF | KINKO | — | 25.7 | 348° (342.3°) | — | — | — | — | Basic RNP1 |

ILS for RWY 31

| | | |
|-----------|-------------------------|----------------|
| REMARKS : | 1. LOC beam BRG(MAG) | 309° |
| | 2. HGT of ILS REF datum | 16.5m (54ft) |
| | 3. GP Angle | 3.0° |
| | 4. ELEV of ILS-DME | 236.6m (776ft) |