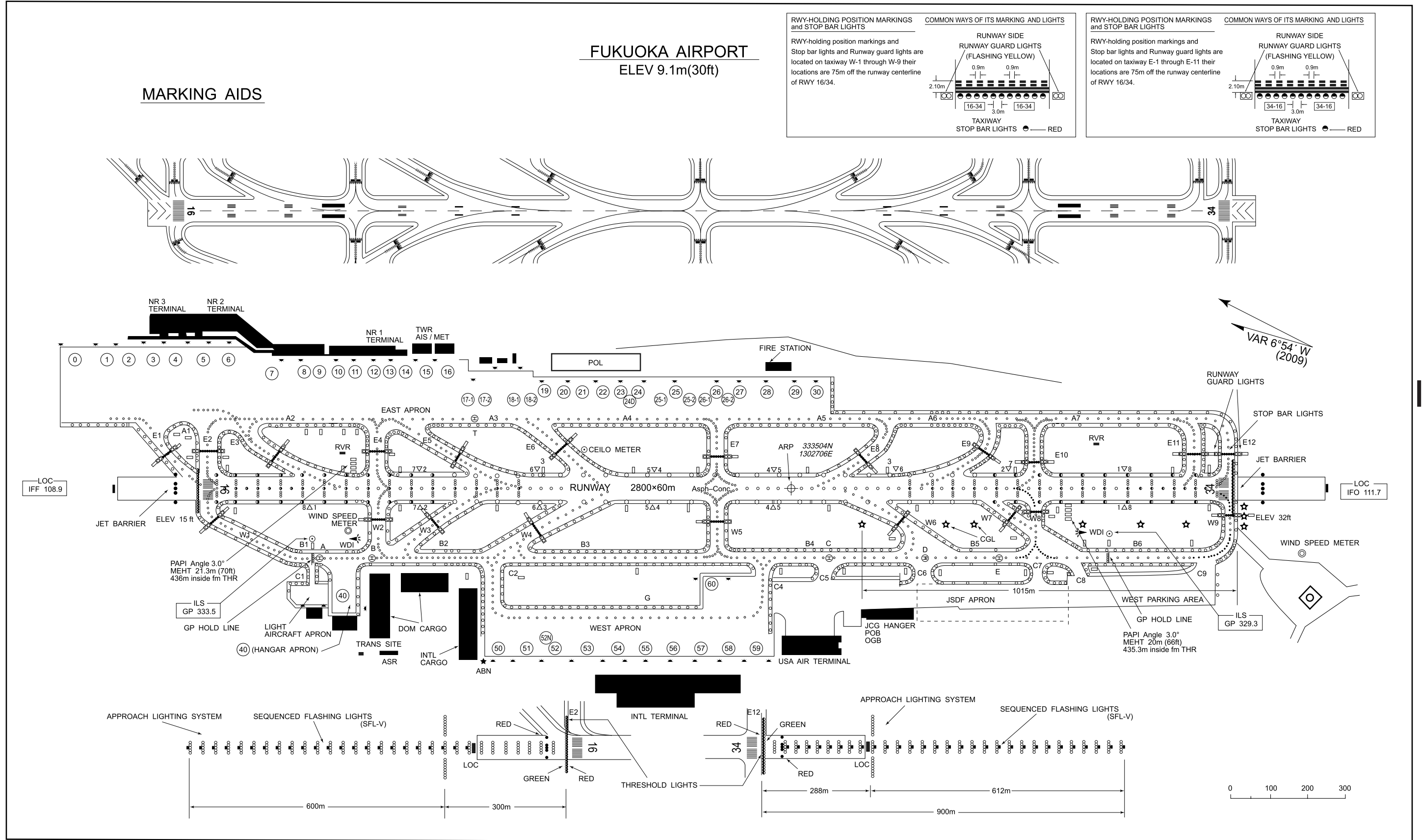


AERODROME CHART

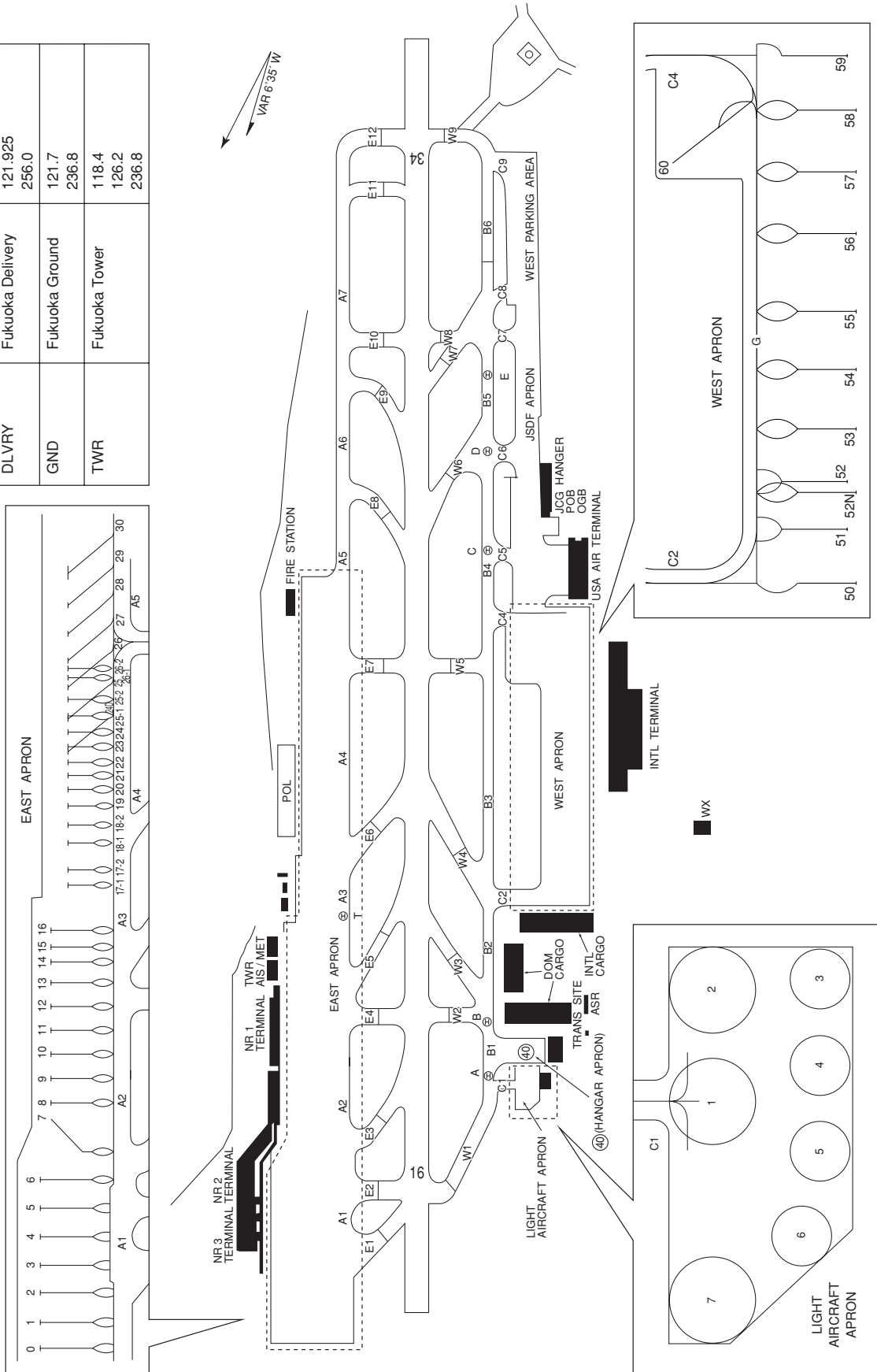


AD CHART

RJFF / FUKUOKA

FUKUOKA AP
ELEV 9.1m(30ft)ARP

Designation	Call Sign	Frequency(MHz)
ATIS	Fukuoka Airport	127.2
DLVRY	Fukuoka Delivery	121.925 256.0
GND	Fukuoka Ground	121.7 236.8
TWR	Fukuoka Tower	118.4 126.2 236.8



C2, C4, G : Aircraft stand taxi lane

INTENTIONALLY LEFT BLANK

AERODROME OBSTRUCTION CHART-ICAO
TYPE A (OPERATING LIMITATIONS)

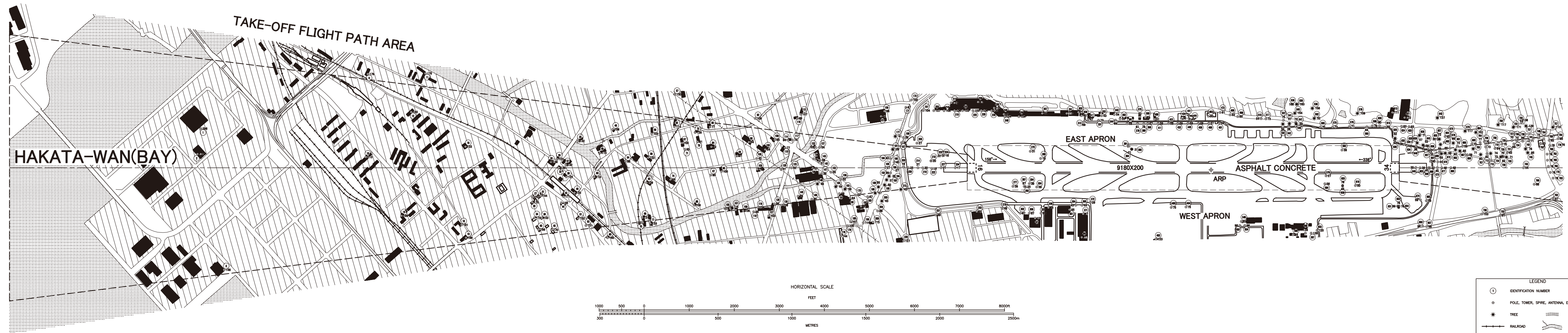
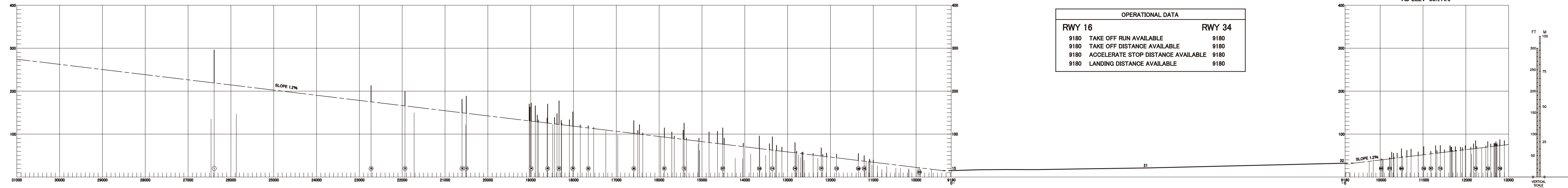
DIMENSIONS AND ELEVATIONS IN FEET BEARINGS ARE MAGNETIC

MAGNETIC VARIATION 6°42.8' W MAR 2003

RWY : 16/34

FUKUOKA AIRPORT
OBSTRUCTION CHART RWY 16-34
AD ELEV 30ft ARP

OPERATIONAL DATA	
RWY 16	RWY 34
9180 TAKE OFF RUN AVAILABLE	9180
9180 TAKE OFF DISTANCE AVAILABLE	9180
9180 ACCELERATE STOP DISTANCE AVAILABLE	9180
9180 LANDING DISTANCE AVAILABLE	9180



LEGEND		AMENDMENT RECORD		
①	IDENTIFICATION NUMBER	Nr	DATE	ENTERED BY
⊙	POLE, TOWER, SPIRE, ANTENNA, ETC			
*	TREE			
—+—	RAILROAD			
— — —	TRANSMISSION LINE OR OVERHEAD CABLE			
▲	TRIANGULATION POINT			
★	AERONAUTICAL GROUND LIGHT			
▨	LEVEE			

AERODROME OBSTRUCTION CHART-ICAO
TYPE A (OPERATING LIMITATIONS)

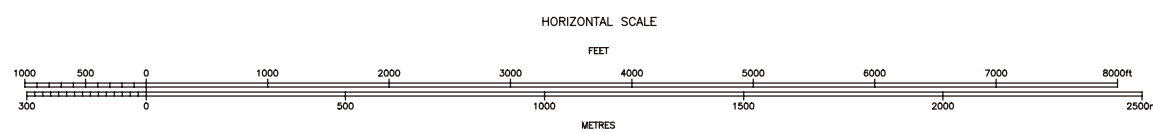
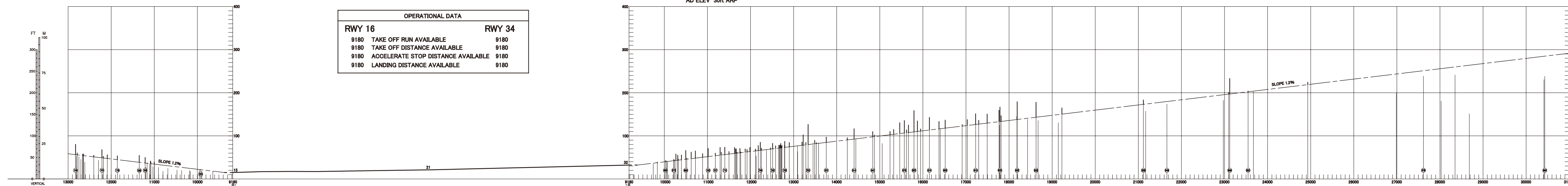
DIMENSIONS AND ELEVATIONS IN FEET BEARINGS ARE MAGNETIC

MAGNETIC VARIATION 6° 42.8' W MAR 2003

RWY : 16/34

OPERATIONAL DATA	
RWY 16	RWY 34
9180 TAKE OFF RUN AVAILABLE	9180
9180 TAKE OFF DISTANCE AVAILABLE	9180
9180 ACCELERATE STOP DISTANCE AVAILABLE	9180
9180 LANDING DISTANCE AVAILABLE	9180

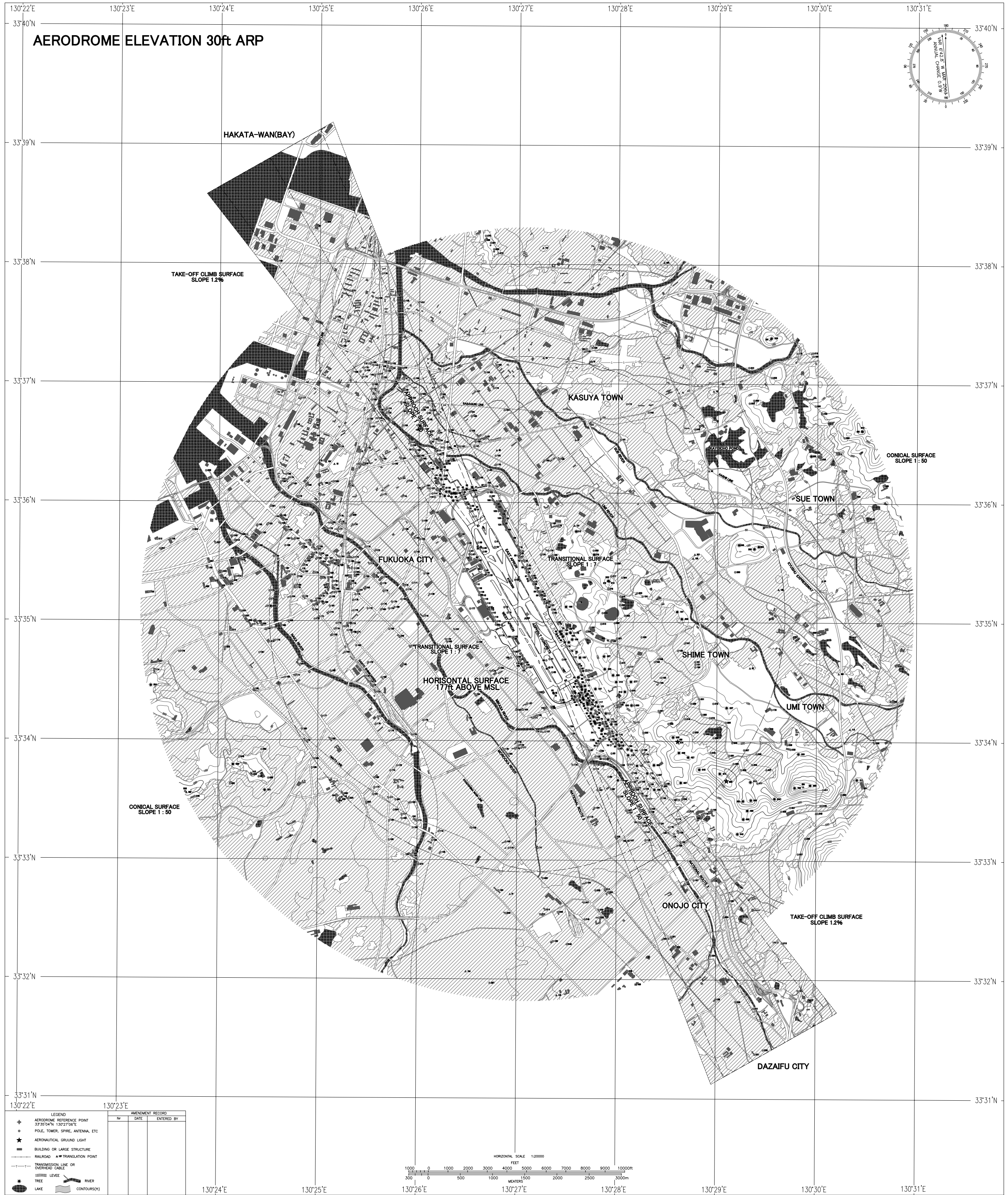
FUKUOKA AIRPORT
OBSTRUCTION CHART RWY 16-34
AD ELEV 30ft ARP



LEGEND		AMENDMENT RECORD		
①	IDENTIFICATION NUMBER	Nr	DATE	ENTERED BY
⊙	POLE, TOWER, SPIRE, ANTENNA, ETC			
*	TREE			
—+—	RAILROAD			
— —	TRANSMISSION LINE OR OVERHEAD CABLE			
△	TRIANGULATION POINT			
★	AERONAUTICAL GROUND LIGHT			

AERODROME OBSTRUCTION CHART - ICAO
TYPE B

DIMENSIONS AND ELEVATIONS IN FEET BEARINGS ARE MAGNETIC



STANDARD DEPARTURE CHART -INSTRUMENT

RJFF / FUKUOKA

SID

OGUNI FIVE DEPARTURE

RWY 16 : Climb RWY HDG to 700FT, turn right to intercept and proceed via DGC R159 to 33.0DME, turn left to intercept and proceed via TAE R272 to OGUNI.

Cross DGC R159/28.0DME at or below FL200, cross OGUNI at or above 10000FT.

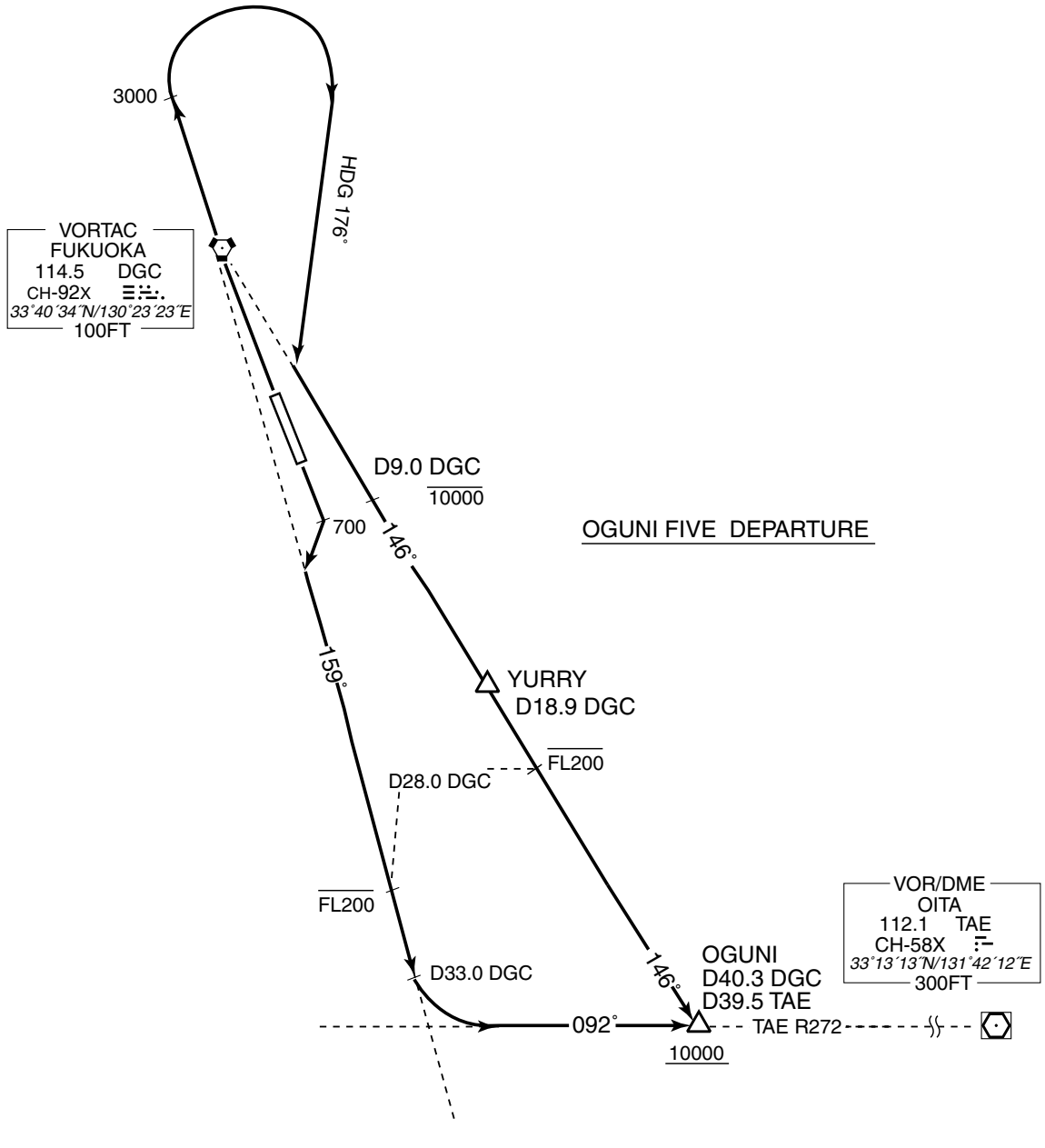
RWY 34 : Climb RWY HDG to 3000FT, turn right HDG 176° to intercept and proceed via DGC R146 to OGUNI.

Cross DGC R146/9.0DME at or below 10000FT, cross DGC R146/28.0DME at or below FL200, cross OGUNI at or above 10000FT.

Note RWY16 : 5.8% climb gradient required up to 1100FT.

Obstacle ALT 399FT located at 1.2NM 138° from end of RWY16.

Obstacle ALT 1470FT located at 6.2NM 182° from end of RWY16.



STANDARD DEPARTURE CHART-INSTRUMENT

RJFF / FUKUOKA

SID

YAMEK SEVEN DEPARTURE

RWY 16 : Climb RWY HDG to 700FT, turn right to intercept and proceed via DGC R159 to YAMEK.

Cross YAMEK at or above 5000FT.

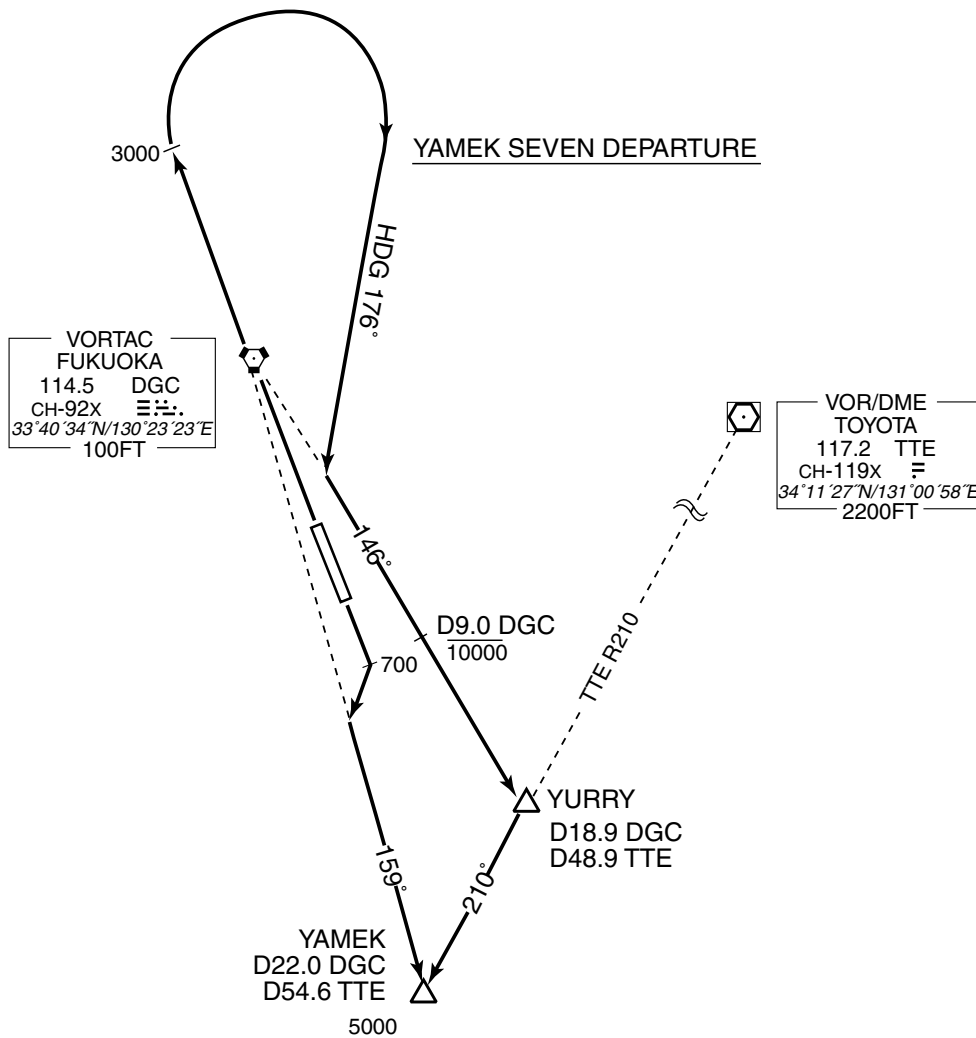
RWY 34 : Climb RWY HDG to 3000FT, turn right HDG 176° to intercept and proceed via DGC R146 to YURRY, turn right to intercept and proceed via TTE R210 to YAMEK.

Cross DGC R146/9.0DME at or below 10000FT, cross YAMEK at or above 5000FT.

Note RWY16 : 5.8% climb gradient required up to 1100FT.

Obstacle ALT 399FT located at 1.2NM 138° from end of RWY16.

Obstacle ALT 1470FT located at 6.2NM 182° from end of RWY16.



STANDARD DEPARTURE CHART-INSTRUMENT

RJFF / FUKUOKA

SID

YAMGA FIVE DEPARTURE

RWY 16 : Climb RWY HDG to 700FT, turn right to intercept and proceed via DGC R159 to YAMGA.

Cross DGC R159/28.0DME at or below FL200, cross YAMGA at or above 10000FT.

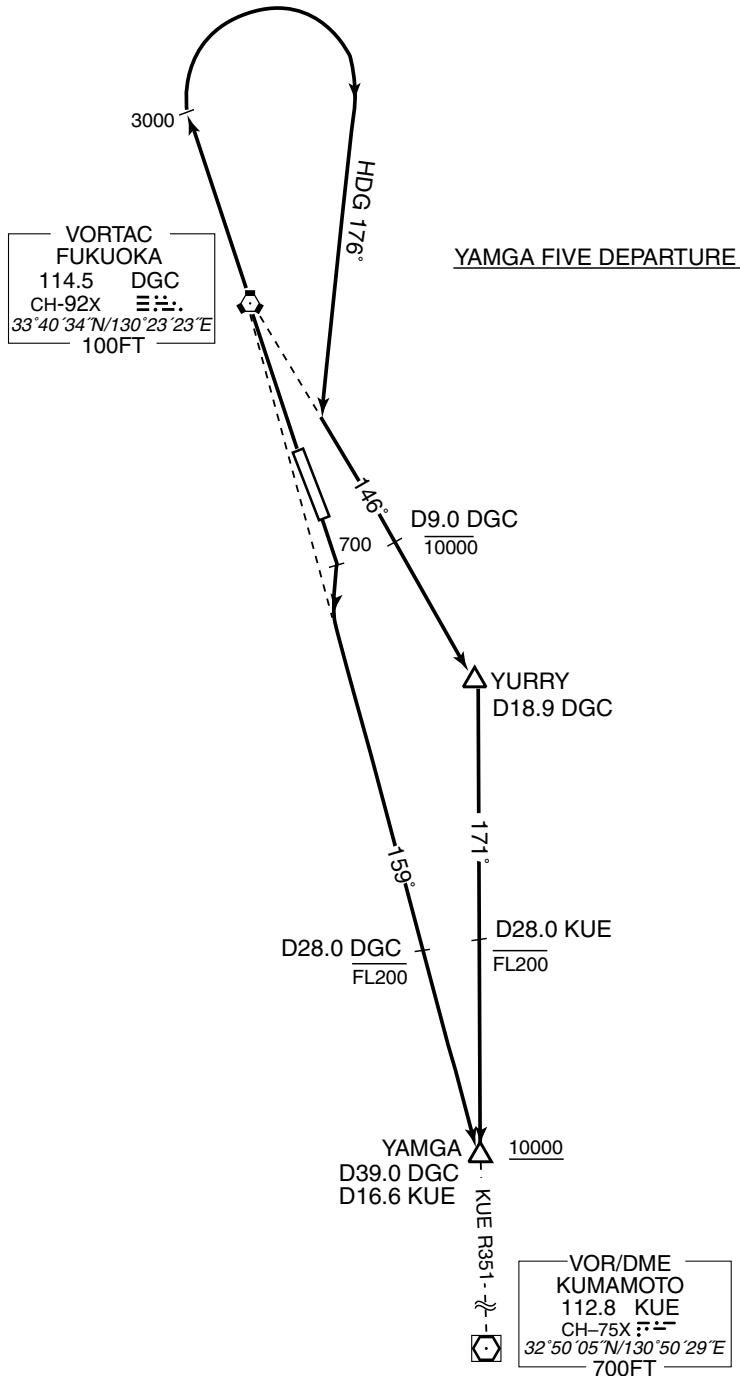
RWY 34 : Climb RWY HDG to 3000FT, turn right HDG 176° to intercept and proceed via DGC R146 to YURRY, turn right to intercept and proceed via KUE R351 to YAMGA.

Cross DGC R146/9.0DME at or below 10000FT, cross KUE R351/28.0DME at or below FL200, cross YAMGA at or above 10000FT.

Note RWY16 : 5.8% climb gradient required up to 1100FT.

Obstacle ALT 399FT located at 1.2NM 138° from end of RWY16.

Obstacle ALT 1470FT located at 6.2NM 182° from end of RWY16.



STANDARD DEPARTURE CHART-INSTRUMENT

RJFF / FUKUOKA

SID

FUKUOKA TWO DEPARTURE

RWY 16 : Climb RWY HDG to 700FT, turn right to intercept and proceed via DGC R159 to YAMEK, turn right to intercept and proceed via DGC R178 to DGC VORTAC.

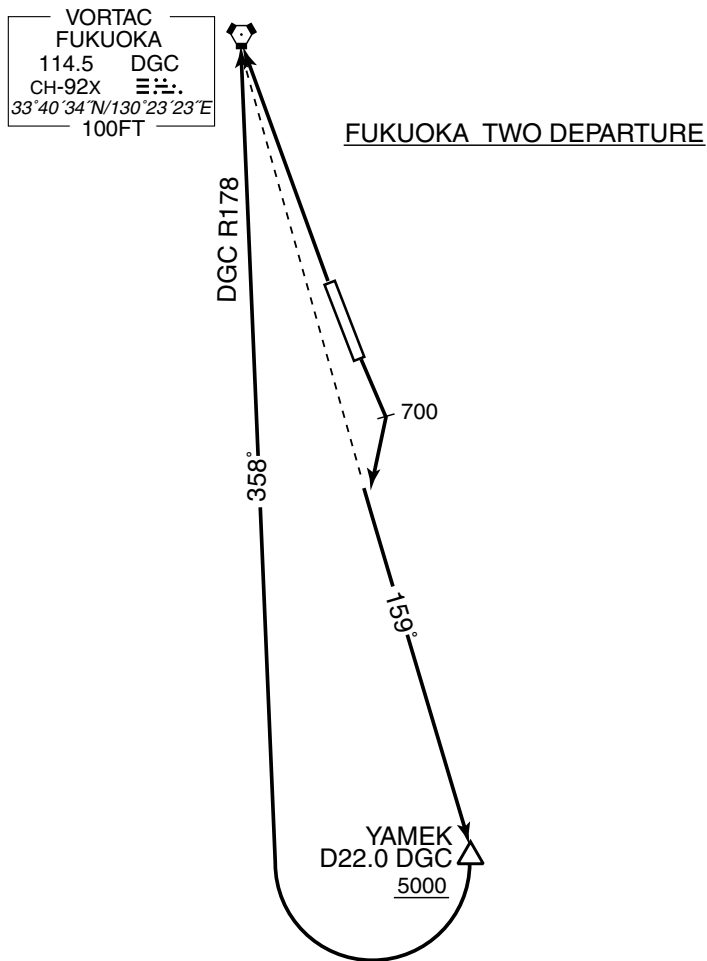
Cross YAMEK at or above 5000FT.

RWY 34 : Climb direct to DGC VORTAC.

Note RWY16 : 5.8% climb gradient required up to 1100FT.

Obstacle ALT 399FT located at 1.2NM 138° from end of RWY16.

Obstacle ALT 1470FT located at 6.2NM 182° from end of RWY16.



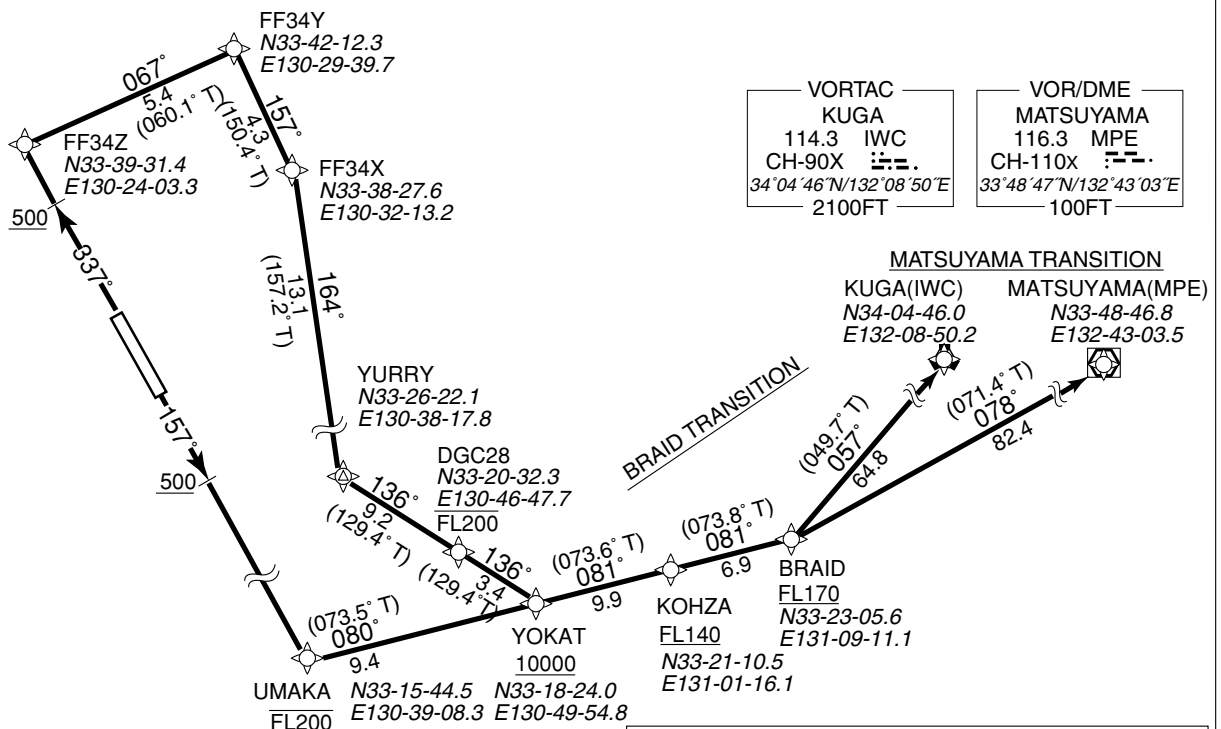
STANDARD DEPARTURE CHART-INSTRUMENT

RJFF / FUKUOKA

RNAV SID and TRANSITION

YOKAT THREE RNAV DEPARTURE		RNAV 1
Note 1) DME/DME/IRU or GNSS required. ※The aircraft equipped with only DME/DME/IRU must be able to update its position without delay at the starting point of take-off roll. 2) RADAR service required.	Critical DME	RWY16 : DGC "1.0NM FM DER~5.4NM FM DER" IKE "1.0NM FM DER~5.4NM FM DER" RWY34 : DGC "3.5NM~2.2NM to FF34Z" IKE "3.5NM to FF34Z~FF34X" TTE "2.2NM to FF34Z~FF34X"
	DME GAP	RWY16 :DER~1.0NM FM DER RWY34 :DER~0.9NM FM DER
	Inappropriate Navaids	See AD1.1.6.10.3. Inappropriate NAVAIDs for RNAV1

VAR 7°W (2008)



Note RWY34 : 7.0% climb gradient required up to 2800FT.
RWY16 : 5.8% climb gradient required up to 1100FT.

YOKAT THREE RNAV DEPARTURE

RWY34 : Climb on HDG 337° at or above 500FT, direct to FF34Z, to FF34Y, to FF34X, to YURRY, to DGC28 at or below FL200, to YOKAT at or above 10000FT.
 RWY16 : Climb on HDG 157° at or above 500FT, direct to UMAKA at or below FL200, to YOKAT at or above 10000FT.

BRAID TRANSITION

From YOKAT, to KOHZA at or above FL140, to BRAID at or above FL170, to KUGA(IWC).

MATSUYAMA TRANSITION

From YOKAT, to KOHZA at or above FL140, to BRAID at or above FL170, to MATSUYAMA(MPE).

Note RWY34 : 7.0% climb gradient required up to 2800FT.
 RWY16 : 5.8% climb gradient required up to 1100FT.
 Obstacle ALT 399FT located at 1.2NM 138° from end of RWY16.
 Obstacle ALT 1470FT located at 6.2NM 182° from end of RWY16.

STANDARD DEPARTURE CHART-INSTRUMENT

RJFF / FUKUOKA

RNAV SID and TRANSITION

YOKAT THREE RNAV DEPARTURE

RWY34

Rcmd. Path Terminator	Fix ID (Waypoint Name)	Fly Over	Distance (NM)	MAG Track (TRUE Track)	Turn Direction	Altitude (FT)	Speed Limit (KIAS)	Vertical Angle	Navigation Performance
VA	—	—	—	337° (330.3°)	—	+500	—	—	RNAV1
DF	FF34Z	—	—	—	—	—	—	—	RNAV1
TF	FF34Y	—	5.4	067° (060.1°)	—	—	—	—	RNAV1
TF	FF34X	—	4.3	157° (150.4°)	—	—	—	—	RNAV1
TF	YURRY	—	13.1	164° (157.2°)	—	—	—	—	RNAV1
TF	DGC28	—	9.2	136° (129.4°)	—	-FL200	—	—	RNAV1
TF	YOKAT	—	3.4	136° (129.4°)	—	+10000	—	—	RNAV1

RWY16

Rcmd. Path Terminator	Fix ID (Waypoint Name)	Fly Over	Distance (NM)	MAG Track (TRUE Track)	Turn Direction	Altitude (FT)	Speed Limit (KIAS)	Vertical Angle	Navigation Performance
VA	—	—	—	157° (150.3°)	—	+500	—	—	RNAV1
DF	UMAKA	—	—	—	—	-FL200	—	—	RNAV1
TF	YOKAT	—	9.4	080° (073.5°)	—	+10000	—	—	RNAV1

TRANSITIONS

BRAID TRANSITION

Rcmd. Path Terminator	Fix ID (Waypoint Name)	Fly Over	Distance (NM)	MAG Track (TRUE Track)	Turn Direction	Altitude (FT)	Speed Limit (KIAS)	Vertical Angle	Navigation Performance
IF	YOKAT	—	—	—	—	+10000	—	—	RNAV1
TF	KOHZA	—	9.9	081° (073.6°)	—	+FL140	—	—	RNAV1
TF	BRAID	—	6.9	081° (073.8°)	—	+FL170	—	—	RNAV1
TF	KUGA (IWC)	—	64.8	057° (049.7°)	—	—	—	—	RNAV1

MATSUYAMA TRANSITION

Rcmd. Path Terminator	Fix ID (Waypoint Name)	Fly Over	Distance (NM)	MAG Track (TRUE Track)	Turn Direction	Altitude (FT)	Speed Limit (KIAS)	Vertical Angle	Navigation Performance
IF	YOKAT	—	—	—	—	+10000	—	—	RNAV1
TF	KOHZA	—	9.9	081° (073.6°)	—	+FL140	—	—	RNAV1
TF	BRAID	—	6.9	081° (073.8°)	—	+FL170	—	—	RNAV1
TF	MATSUYAMA (MPE)	—	82.4	078° (071.4°)	—	—	—	—	RNAV1

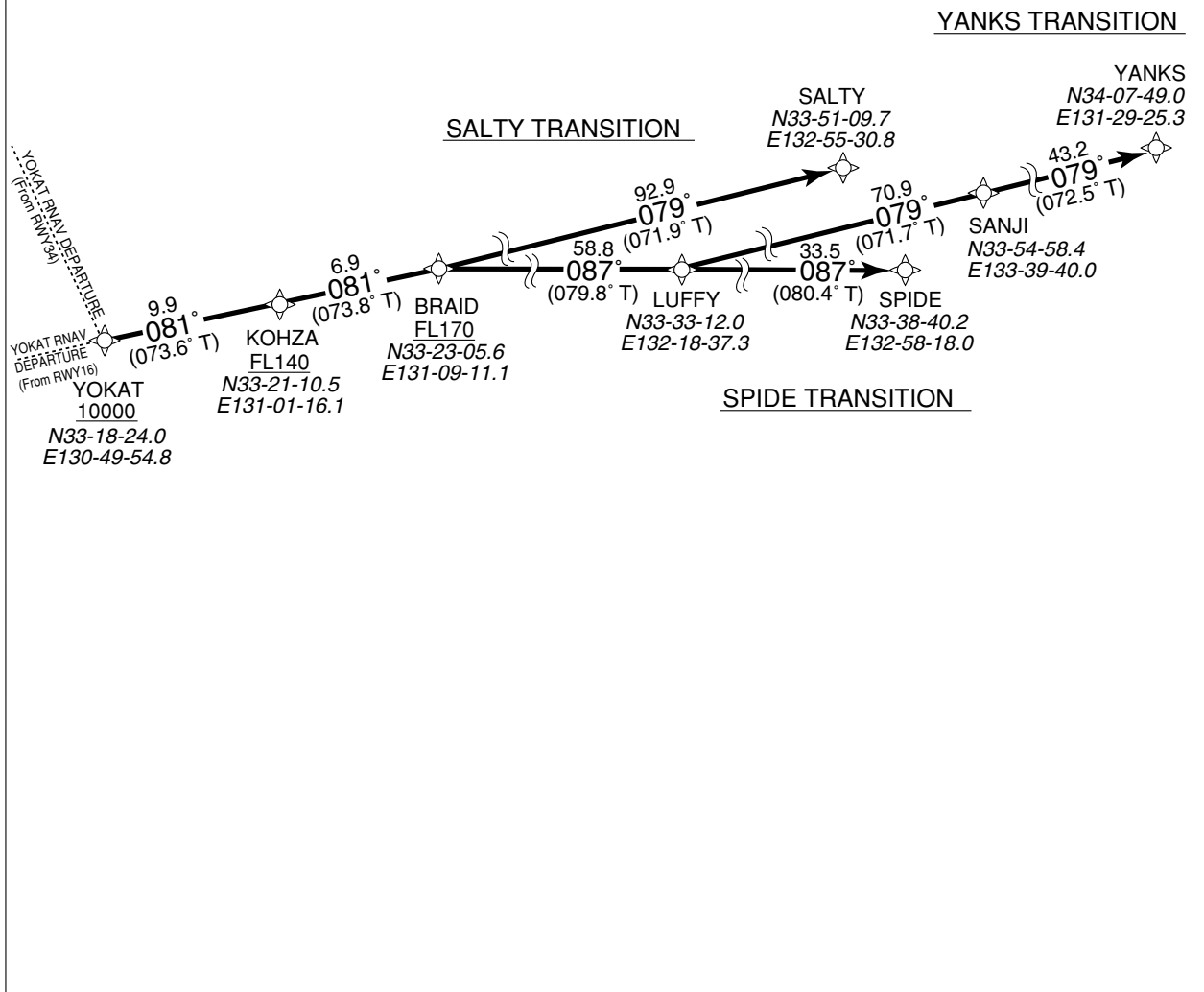
STANDARD DEPARTURE CHART-INSTRUMENT

RJFF / FUKUOKA

➔RNAV TRANSITION

SPIDE/SALTY/YANKS TRANSITION		RNAV 1
Note 1) DME/DME/IRU or GNSS required. 2) RADAR service required.	Critical DME	-
	DME GAP	-
	Inappropriate Nav aids	See AD1.1.6.10.3. Inappropriate NAVAIDs for RNAV1

VAR 7°W (2012)



SPIDE TRANSITION

From YOKAT at or above 10000FT, to KOHZA at or above FL140, to BRAID at or above FL170, to LUFFY, to SPIDE.

SALTY TRANSITION

From YOKAT at or above 10000FT, to KOHZA at or above FL140, to BRAID at or above FL170, to SALTY.

YANKS TRANSITION

From YOKAT at or above 10000FT, to KOHZA at or above FL140, to BRAID at or above FL170, to LUFFY, to SANJI, to YANKS.

STANDARD DEPARTURE CHART-INSTRUMENT

RJFF / FUKUOKA

➔ RNAV TRANSITION

SPIDE TRANSITION

Rcmd. Path Terminator	Fix ID (Waypoint Name)	Fly Over	Distance (NM)	MAG Track (TRUE Track)	Turn Direction	Altitude (FT)	Speed Limit (KIAS)	Vertical Angle	Navigation Performance
IF	YOKAT	—	—	—	—	+10000	—	—	RNAV1
TF	KOHZA	—	9.9	081° (073.6°)	—	+FL140	—	—	RNAV1
TF	BRAID	—	6.9	081° (073.8°)	—	+FL170	—	—	RNAV1
TF	LUFFY	—	58.8	087° (079.8°)	—	—	—	—	RNAV1
TF	SPIDE	—	33.5	087° (080.4°)	—	—	—	—	RNAV1

SALTY TRANSITION

Rcmd. Path Terminator	Fix ID (Waypoint Name)	Fly Over	Distance (NM)	MAG Track (TRUE Track)	Turn Direction	Altitude (FT)	Speed Limit (KIAS)	Vertical Angle	Navigation Performance
IF	YOKAT	—	—	—	—	+10000	—	—	RNAV1
TF	KOHZA	—	9.9	081° (073.6°)	—	+FL140	—	—	RNAV1
TF	BRAID	—	6.9	081° (073.8°)	—	+FL170	—	—	RNAV1
TF	SALTY	—	92.9	079° (071.9°)	—	—	—	—	RNAV1

YANKS TRANSITION

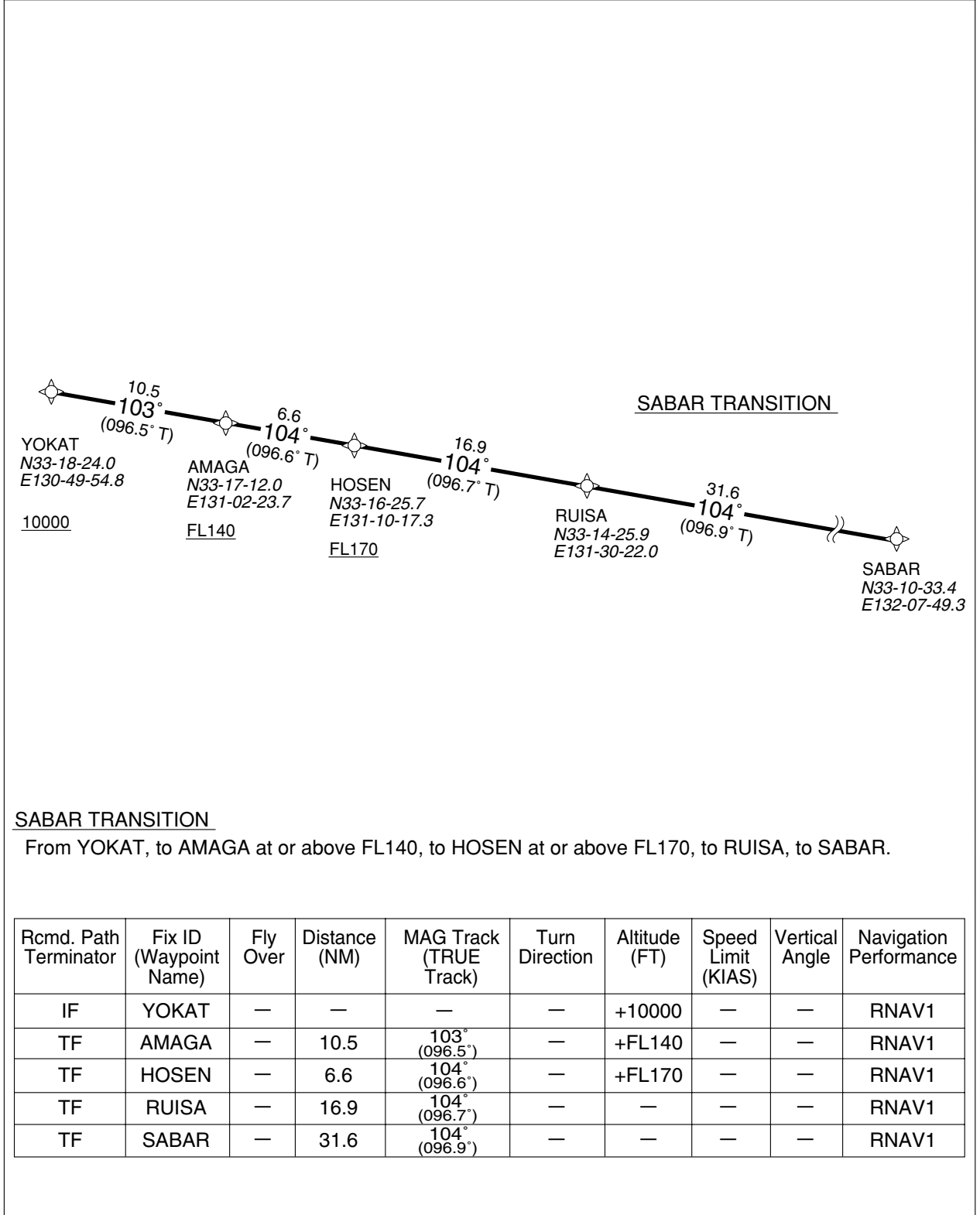
Rcmd. Path Terminator	Fix ID (Waypoint Name)	Fly Over	Distance (NM)	MAG Track (TRUE Track)	Turn Direction	Altitude (FT)	Speed Limit (KIAS)	Vertical Angle	Navigation Performance
IF	YOKAT	—	—	—	—	+10000	—	—	RNAV1
TF	KOHZA	—	9.9	081° (073.6°)	—	+FL140	—	—	RNAV1
TF	BRAID	—	6.9	081° (073.8°)	—	+FL170	—	—	RNAV1
TF	LUFFY	—	58.8	087° (079.8°)	—	—	—	—	RNAV1
TF	SANJI	—	70.9	079° (071.7°)	—	—	—	—	RNAV1
TF	YANKS	—	43.2	079° (072.5°)	—	—	—	—	RNAV1

STANDARD DEPARTURE CHART-INSTRUMENT

RJFF / FUKUOKA

RNAV TRANSITION

SABAR TRANSITION		RNAV 1
Note 1) DME/DME/IRU or GNSS required. 2) RADAR service required.	Critical DME	-
	DME GAP	-
	Inappropriate Nav aids	See AD1.1.6.10.3. Inappropriate NAVAIDs for RNAV1



SABAR TRANSITION

From YOKAT, to AMAGA at or above FL140, to HOSEN at or above FL170, to RUISA, to SABAR.

Rcmd. Path Terminator	Fix ID (Waypoint Name)	Fly Over	Distance (NM)	MAG Track (TRUE Track)	Turn Direction	Altitude (FT)	Speed Limit (KIAS)	Vertical Angle	Navigation Performance
IF	YOKAT	—	—	—	—	+10000	—	—	RNAV1
TF	AMAGA	—	10.5	103° (096.5°)	—	+FL140	—	—	RNAV1
TF	HOSEN	—	6.6	104° (096.6°)	—	+FL170	—	—	RNAV1
TF	RUISA	—	16.9	104° (096.7°)	—	—	—	—	RNAV1
TF	SABAR	—	31.6	104° (096.9°)	—	—	—	—	RNAV1

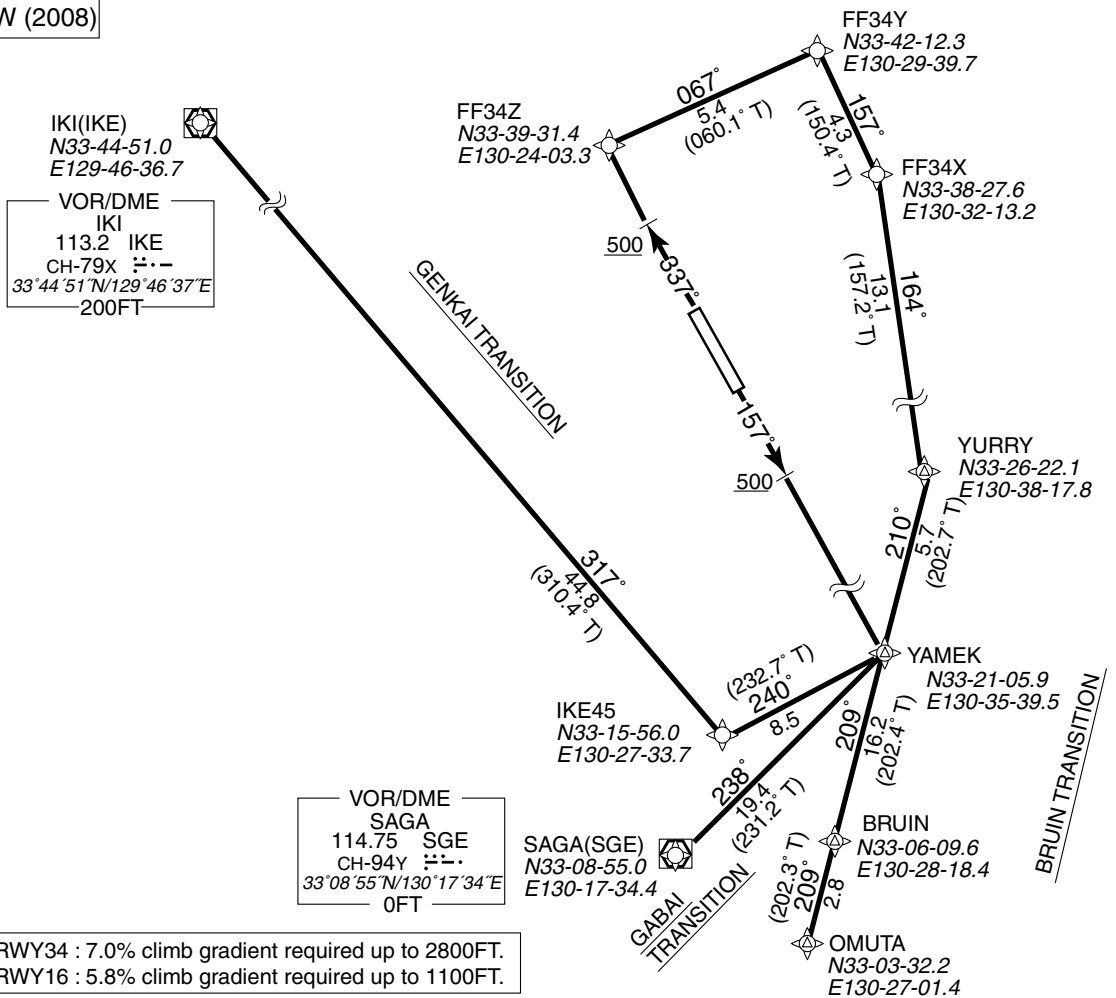
STANDARD DEPARTURE CHART-INSTRUMENT

RJFF / FUKUOKA

RNAV SID and TRANSITION

KURUME THREE RNAV DEPARTURE		RNAV 1
Note 1) DME/DME/IRU or GNSS required. ※The aircraft equipped with only DME/DME/IRU must be able to update its position without delay at the starting point of take-off roll. 2) RADAR service required.	Critical DME	RWY16 : DGC "1.0NM FM DER~5.4NM FM DER" IKE "1.0NM FM DER~5.4NM FM DER" RWY34 : DGC "3.5NM~2.2NM to FF34Z" IKE "3.5NM to FF34Z~FF34X" TTE "2.2NM to FF34Z~FF34X"
	DME GAP	RWY16 : DER~1.0NM FM DER RWY34 : DER~0.9NM FM DER
	Inappropriate Nav aids	See AD1.1.6.10.3. Inappropriate NAVAIDs for RNAV1

VAR 7°W (2008)



Note RWY34 : 7.0% climb gradient required up to 2800FT.
 RWY16 : 5.8% climb gradient required up to 1100FT.

<p>KURUME THREE RNAV DEPARTURE RWY34 : Climb on HDG 337° at or above 500FT, direct to FF34Z, to FF34Y, to FF34X, to YURRY, to YAMEK. RWY16 : Climb on HDG 157° at or above 500FT, direct to YAMEK.</p>
<p>GABAI TRANSITION From YAMEK, to SAGA(SGE).</p>
<p>BRUIN TRANSITION From YAMEK, to BRUIN, to OMTA.</p>
<p>GENKAI TRANSITION From YAMEK, to IKE45, to IKI(IKE).</p>
<p>Note RWY34 : 7.0% climb gradient required up to 2800FT. RWY16 : 5.8% climb gradient required up to 1100FT. Obstacle ALT 399FT located at 1.2NM 138° from end of RWY16. Obstacle ALT 1470FT located at 6.2NM 182° from end of RWY16.</p>

STANDARD DEPARTURE CHART-INSTRUMENT

RJFF / FUKUOKA

RNAV SID and TRANSITION

KURUME THREE RNAV DEPARTURE

RWY34

Rcmd. Path Terminator	Fix ID (Waypoint Name)	Fly Over	Distance (NM)	MAG Track (TRUE Track)	Turn Direction	Altitude (FT)	Speed Limit (KIAS)	Vertical Angle	Navigation Performance
VA	—	—	—	337° (330.3°)	—	+500	—	—	RNAV1
DF	FF34Z	—	—	—	—	—	—	—	RNAV1
TF	FF34Y	—	5.4	067° (060.1°)	—	—	—	—	RNAV1
TF	FF34X	—	4.3	157° (150.4°)	—	—	—	—	RNAV1
TF	YURRY	—	13.1	164° (157.2°)	—	—	—	—	RNAV1
TF	YAMEK	—	5.7	210° (202.7°)	—	—	—	—	RNAV1

RWY16

Rcmd. Path Terminator	Fix ID (Waypoint Name)	Fly Over	Distance (NM)	MAG Track (TRUE Track)	Turn Direction	Altitude (FT)	Speed Limit (KIAS)	Vertical Angle	Navigation Performance
VA	—	—	—	157° (150.3°)	—	+500	—	—	RNAV1
DF	YAMEK	—	—	—	—	—	—	—	RNAV1

TRANSITIONS

GABAI TRANSITION

Rcmd. Path Terminator	Fix ID (Waypoint Name)	Fly Over	Distance (NM)	MAG Track (TRUE Track)	Turn Direction	Altitude (FT)	Speed Limit (KIAS)	Vertical Angle	Navigation Performance
IF	YAMEK	—	—	—	—	—	—	—	RNAV1
TF	SAGA(SGE)	—	19.4	238° (231.2°)	—	—	—	—	RNAV1

BRUIN TRANSITION

Rcmd. Path Terminator	Fix ID (Waypoint Name)	Fly Over	Distance (NM)	MAG Track (TRUE Track)	Turn Direction	Altitude (FT)	Speed Limit (KIAS)	Vertical Angle	Navigation Performance
IF	YAMEK	—	—	—	—	—	—	—	RNAV1
TF	BRUIN	—	16.2	209° (202.4°)	—	—	—	—	RNAV1
TF	OMUTA	—	2.8	209° (202.3°)	—	—	—	—	RNAV1

GENKAI TRANSITION

Rcmd. Path Terminator	Fix ID (Waypoint Name)	Fly Over	Distance (NM)	MAG Track (TRUE Track)	Turn Direction	Altitude (FT)	Speed Limit (KIAS)	Vertical Angle	Navigation Performance
IF	YAMEK	—	—	—	—	—	—	—	RNAV1
TF	IKE45	—	8.5	240° (232.7°)	—	—	—	—	RNAV1
TF	IKI(IKE)	—	44.8	317° (310.4°)	—	—	—	—	RNAV1

STANDARD DEPARTURE CHART - INSTRUMENT

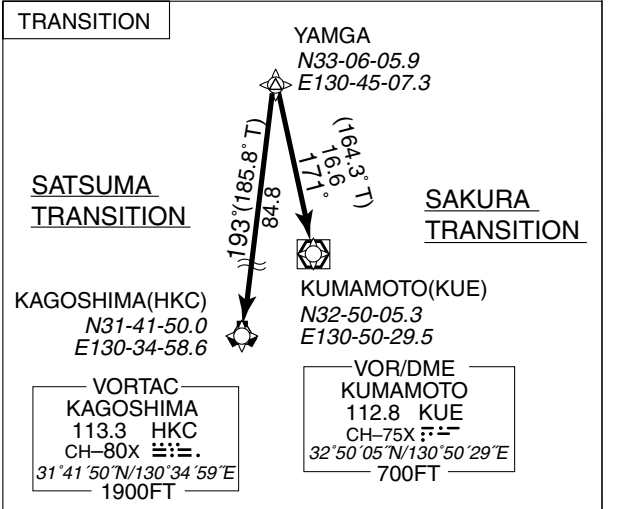
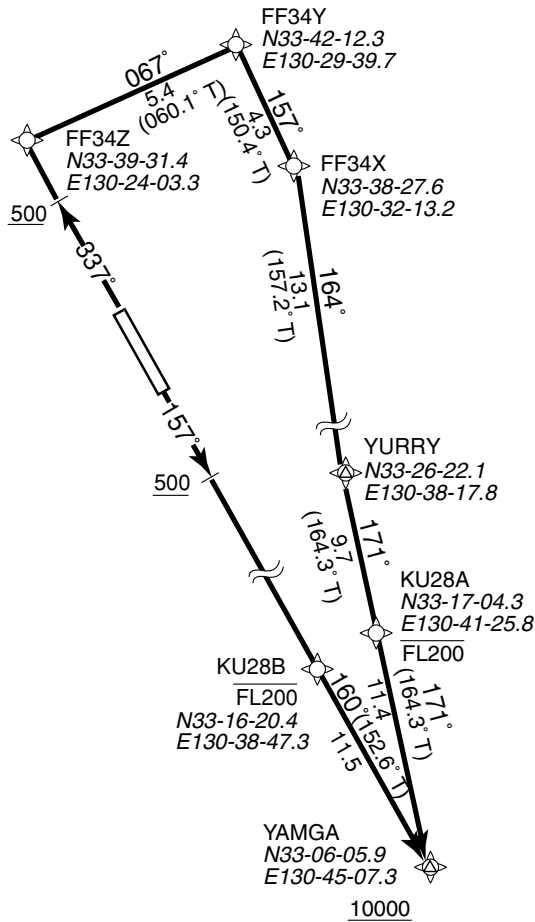
RJFF / FUKUOKA

RNAV SID and TRANSITION

MORIO THREE RNAV DEPARTURE		RNAV 1
Note 1) DME/DME/IRU or GNSS required. ※The aircraft equipped with only DME/DME/IRU must be able to update its position without delay at the starting point of take-off roll. 2) RADAR service required.	Critical DME	RWY16 :DGC "1.0NM FM DER~5.4NM FM DER" IKE "1.0NM FM DER~5.4NM FM DER" RWY34 :DGC "3.5NM~2.2NM to FF34Z" IKE "3.5NM to FF34Z~FF34X" TTE "2.2NM to FF34Z~FF34X"
	DME GAP	RWY16 :DER~1.0NM FM DER RWY34 :DER~0.9NM FM DER
	Inappropriate NavAids	See AD1.1.6.10.3. Inappropriate NAVAIDs for RNAV1

VAR 7°W (2008)

Note RWY34 : 7.0% climb gradient required up to 2800FT.
RWY16 : 5.8% climb gradient required up to 1100FT.



MORIO THREE RNAV DEPARTURE

RWY34 : Climb on HDG 337° at or above 500FT, direct to FF34Z, to FF34Y, to FF34X, to YURRY, to KU28A at or below FL200, to YAMGA at or above 10000FT.

RWY16 : Climb on HDG 157° at or above 500FT, direct to KU28B at or below FL200, to YAMGA at or above 10000FT.

SAKURA TRANSITION

From YAMGA, to KUMAMOTO(KUE).

SATSUMA TRANSITION

From YAMGA, to KAGOSHIMA(HKC).

Note RWY34 : 7.0% climb gradient required up to 2800FT.
RWY16 : 5.8% climb gradient required up to 1100FT.
Obstacle ALT 399FT located at 1.2NM 138° from end of RWY16.
Obstacle ALT 1470FT located at 6.2NM 182° from end of RWY16.

STANDARD DEPARTURE CHART - INSTRUMENT

RJFF / FUKUOKA

RNAV SID and TRANSITION

MORIO THREE RNAV DEPARTURE

RWY34

Rcmd. Path Terminator	Fix ID (Waypoint Name)	Fly Over	Distance (NM)	MAG Track (TRUE Track)	Turn Direction	Altitude (FT)	Speed Limit (KIAS)	Vertical Angle	Navigation Performance
VA	—	—	—	337° (330.3°)	—	+500	—	—	RNAV1
DF	FF34Z	—	—	—	—	—	—	—	RNAV1
TF	FF34Y	—	5.4	067° (060.1°)	—	—	—	—	RNAV1
TF	FF34X	—	4.3	157° (150.4°)	—	—	—	—	RNAV1
TF	YURRY	—	13.1	164° (157.2°)	—	—	—	—	RNAV1
TF	KU28A	—	9.7	171° (164.3°)	—	-FL200	—	—	RNAV1
TF	YAMGA	—	11.4	171° (164.3°)	—	+10000	—	—	RNAV1

RWY16

Rcmd. Path Terminator	Fix ID (Waypoint Name)	Fly Over	Distance (NM)	MAG Track (TRUE Track)	Turn Direction	Altitude (FT)	Speed Limit (KIAS)	Vertical Angle	Navigation Performance
VA	—	—	—	157° (150.3°)	—	+500	—	—	RNAV1
DF	KU28B	—	—	—	—	-FL200	—	—	RNAV1
TF	YAMGA	—	11.5	160° (152.6°)	—	+10000	—	—	RNAV1

TRANSITIONS

SAKURA TRANSITION

Rcmd. Path Terminator	Fix ID (Waypoint Name)	Fly Over	Distance (NM)	MAG Track (TRUE Track)	Turn Direction	Altitude (FT)	Speed Limit (KIAS)	Vertical Angle	Navigation Performance
IF	YAMGA	—	—	—	—	+10000	—	—	RNAV1
TF	KUMAMOTO (KUE)	—	16.6	171° (164.3°)	—	—	—	—	RNAV1

SATSUMA TRANSITION

Rcmd. Path Terminator	Fix ID (Waypoint Name)	Fly Over	Distance (NM)	MAG Track (TRUE Track)	Turn Direction	Altitude (FT)	Speed Limit (KIAS)	Vertical Angle	Navigation Performance
IF	YAMGA	—	—	—	—	+10000	—	—	RNAV1
TF	KAGOSHIMA (HKC)	—	84.8	193° (185.8°)	—	—	—	—	RNAV1

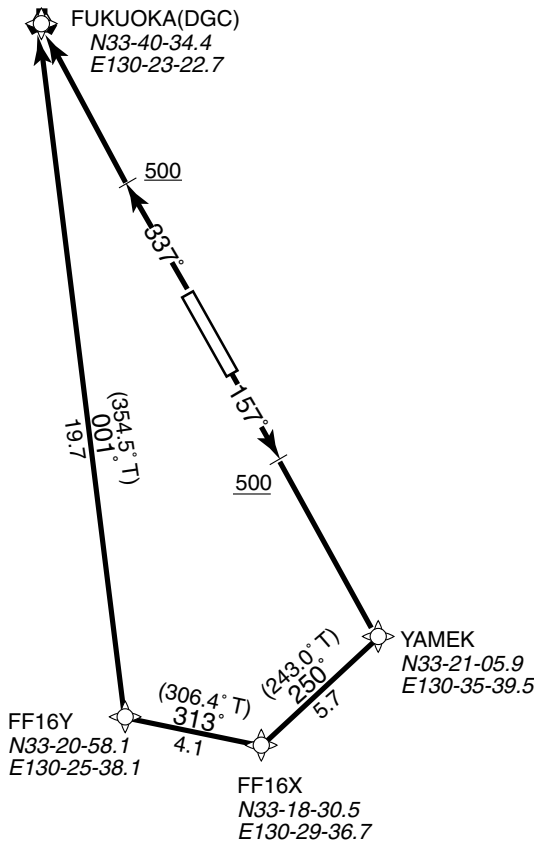
STANDARD DEPARTURE CHART - INSTRUMENT

RJFF / FUKUOKA

RNAV SID

HAKATA TWO RNAV DEPARTURE		RNAV 1
Note 1) DME/DME/IRU or GNSS required. ※The aircraft equipped with only DME/DME/IRU must be able to update its position without delay at the starting point of take-off roll. 2) RADAR service required.	Critical DME	RWY16 : DGC "1.0NM FM DER~5.4NM FM DER" IKE "1.0NM FM DER~5.4NM FM DER" RWY34 : DGC "3.5NM~2.2NM to FF34Z" IKE "3.5NM to FF34Z~FF34X" TTE "2.2NM to FF34Z~FF34X"
	DME GAP	RWY16 : DER~1.0NM FM DER RWY34 : DER~0.9NM FM DER
	Inappropriate Nav aids	See AD1.1.6.10.3. Inappropriate NAVAIDs for RNAV1

VAR 7°W (2008)



Note RWY16 : 5.8% climb gradient required up to 1100FT.

HAKATA TWO RNAV DEPARTURE

RWY34 : Climb on HDG 337° at or above 500FT, direct to FUKUOKA (DGC).

RWY16 : Climb on HDG 157° at or above 500FT, direct to YAMEK, to FF16X, to FF16Y, to FUKUOKA (DGC).

Note RWY16 : 5.8% climb gradient required up to 1100FT.

Obstacle ALT 399FT located at 1.2NM 138° from end of RWY16.

Obstacle ALT 1470FT located at 6.2NM 182° from end of RWY16.

STANDARD DEPARTURE CHART - INSTRUMENT

RJFF / FUKUOKA

RNAV SID

HAKATA TWO RNAV DEPARTURE

RWY34

Rcmd. Path Terminator	Fix ID (Waypoint Name)	Fly Over	Distance (NM)	MAG Track (TRUE Track)	Turn Direction	Altitude (FT)	Speed Limit (KIAS)	Vertical Angle	Navigation Performance
VA	—	—	—	337° (330.3°)	—	+500	—	—	RNAV1
DF	FUKUOKA (DGC)	—	—	—	—	—	—	—	RNAV1

RWY16

Rcmd. Path Terminator	Fix ID (Waypoint Name)	Fly Over	Distance (NM)	MAG Track (TRUE Track)	Turn Direction	Altitude (FT)	Speed Limit (KIAS)	Vertical Angle	Navigation Performance
VA	—	—	—	157° (150.3°)	—	+500	—	—	RNAV1
DF	YAMEK	—	—	—	—	—	—	—	RNAV1
TF	FF16X	—	5.7	250° (243.0°)	—	—	—	—	RNAV1
TF	FF16Y	—	4.1	313° (306.4°)	—	—	—	—	RNAV1
TF	FUKUOKA (DGC)	—	19.7	001° (354.4°)	—	—	—	—	RNAV1

STANDARD DEPARTURE CHART - INSTRUMENT

RJFF / FUKUOKA

TRANSITION

OITA TRANSITION

From over OGUNI, proceed via TAE R272 to TAE VOR/DME.
Cross TAE R272/32DME at or above FL140, cross TAE R272/27DME at or above FL170.

KUGA TRANSITION

From over OGUNI, proceed via IWC R236 to IWC VORTAC.
Cross IWC R236/73DME (DGC R132) at or above FL140,
cross IWC R236/66DME (DGC R123) at or above FL170.

KAGOSHIMA TRANSITION

From over YAMGA, proceed via HKC R012 to HKC VORTAC.

KUMAMOTO TRANSITION

From over YAMGA, proceed via KUE R351 to KUE VOR/DME.

TAGAWA TRANSITION

From over YAMEK, turn left and proceed via TTE R210 to intercept and proceed via DGC R081 to IWC VORTAC.
Cross TTE R210/47DME (DGC R140) at or above 6000FT,
cross TTE R210/38DME (DGC R110) at assigned altitude.

SAGA TRANSITION

From over YAMEK, proceed via SGE R058 to SGE VOR/DME.

OMUTA TRANSITION

From over YAMEK, proceed via TTE R210 to OMTA.

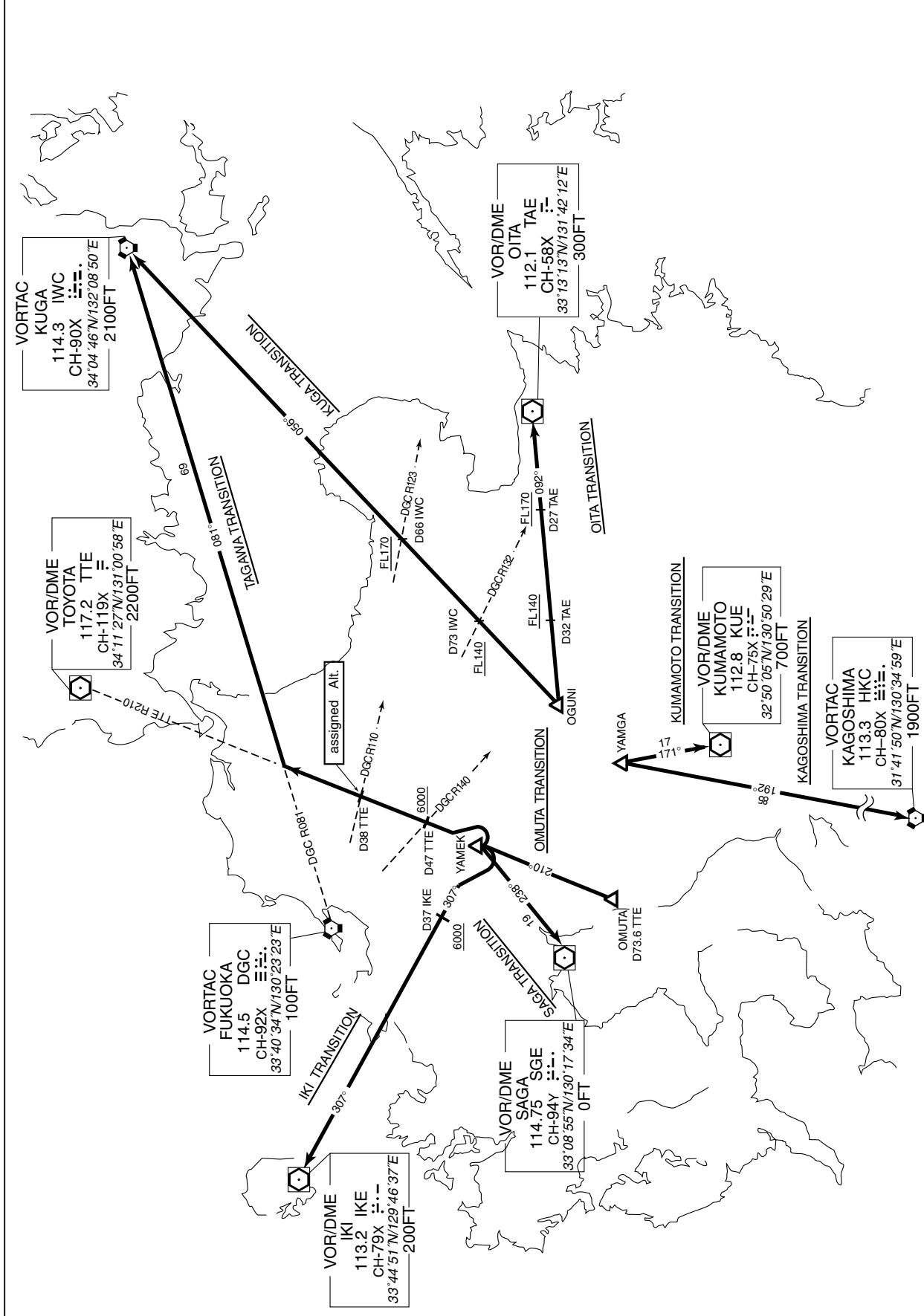
IKI TRANSITION

From over YAMEK, turn right, proceed via IKE R127 to IKE VOR/DME .
Cross IKE R127/37DME at or above 6000FT.

STANDARD DEPARTURE CHART - INSTRUMENT

RJFF / FUKUOKA

TRANSITION



STANDARD ARRIVAL CHART-INSTRUMENT

RJFF / FUKUOKA

STAR

LAGER ARRIVAL

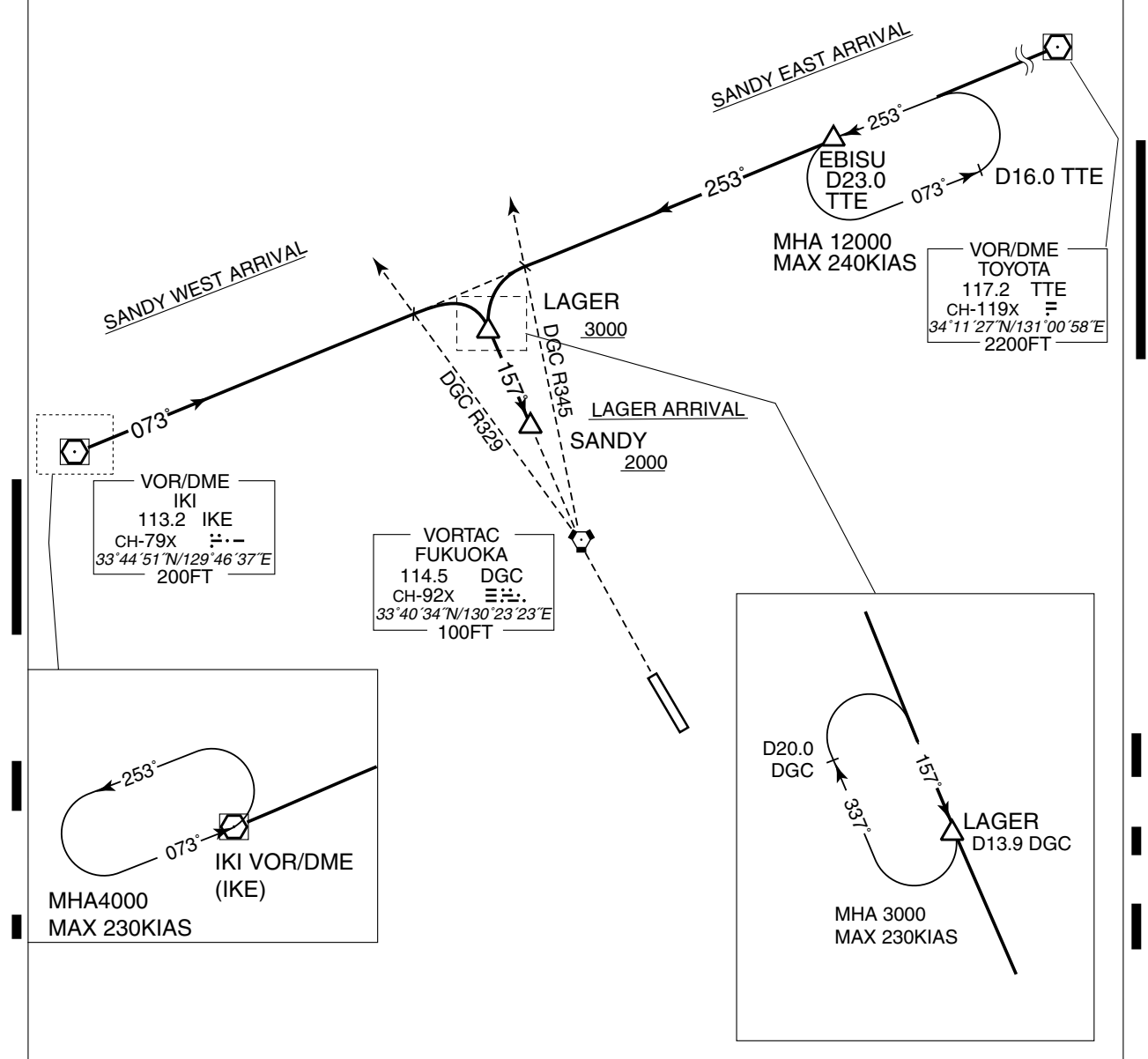
From over LAGER, proceed via DGC R337 to SANDY.
Cross LAGER at or above 3000FT, cross SANDY at or above 2000FT.

SANDY EAST ARRIVAL

From over EBISU, proceed via IKE R073 to intercept and proceed via DGC R337 to SANDY via LAGER.
Cross LAGER at or above 3000FT, cross SANDY at or above 2000FT.

SANDY WEST ARRIVAL

From over IKE VOR/DME, proceed via IKE R073 to intercept and proceed via DGC R337 to SANDY via LAGER.
Cross LAGER at or above 3000FT, cross SANDY at or above 2000FT.



STANDARD ARRIVAL CHART-INSTRUMENT

RJFF / FUKUOKA

STAR

KAFRI EAST ARRIVAL

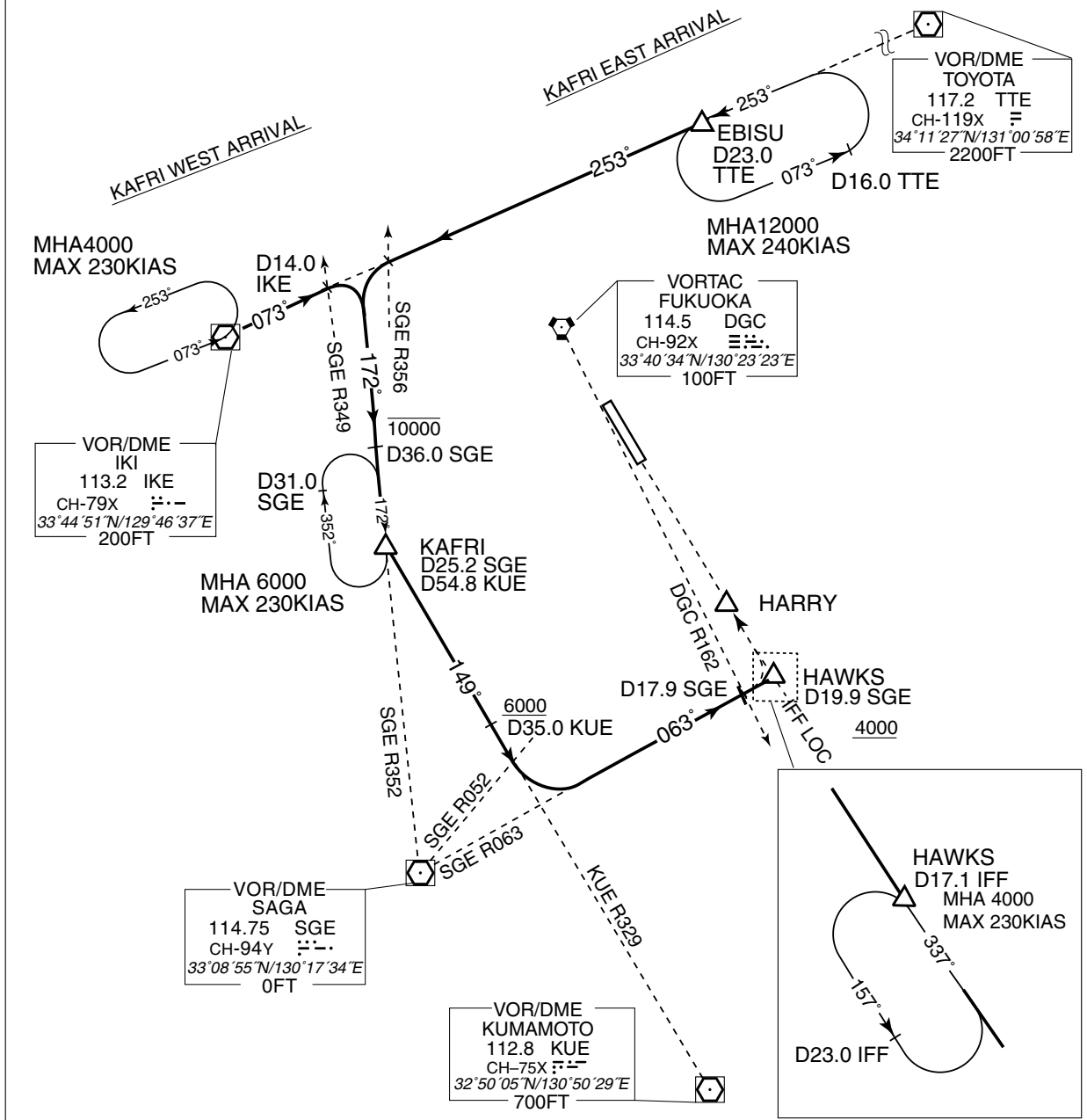
From over EBISU, proceed via IKE R073 to intercept and proceed via SGE R352 to KAFRI, proceed via KUE R329 to intercept and proceed via SGE R063 to HAWKS.

Cross SGE R352/36.0DME at or below 10000FT, cross KUE R329/35.0DME at or above 6000FT, cross HAWKS at or above 4000FT.

KAFRI WEST ARRIVAL

From over IKE VOR/DME, proceed via IKE R073 to intercept and proceed via SGE R352 to KAFRI, proceed via KUE R329, to intercept and proceed via SGE R063 to HAWKS.

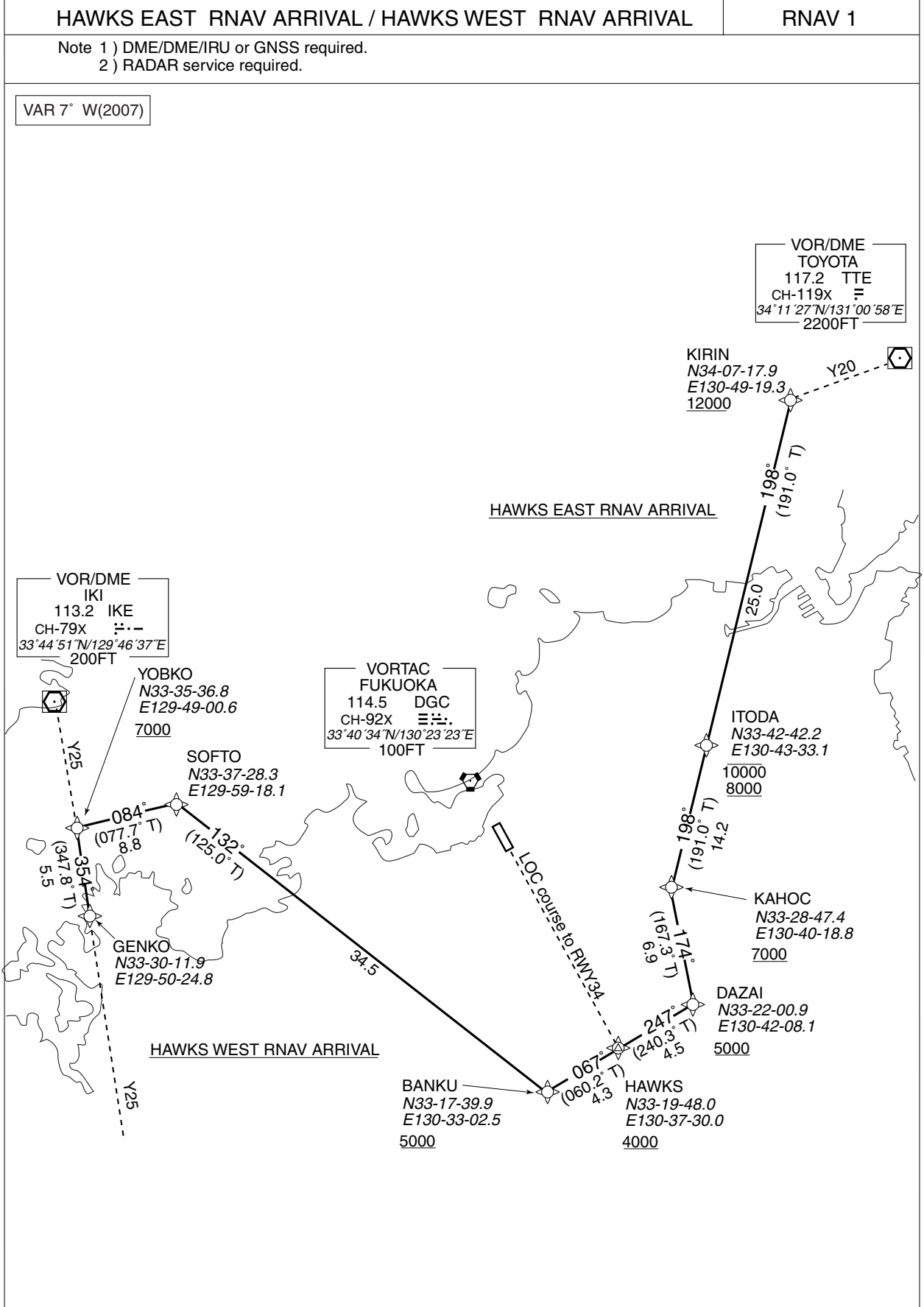
Cross SGE R352/36.0DME at or below 10000FT, cross KUE R329/35.0DME at or above 6000FT, cross HAWKS at or above 4000FT.



STANDARD ARRIVAL CHART-INSTRUMENT

RJFF / FUKUOKA

RNAV STAR RWY34



STANDARD ARRIVAL CHART-INSTRUMENT

RJFF / FUKUOKA

RNAV STAR RWY34

HAWKS EAST RNAV ARRIVAL

From KIRIN at or above 12000FT, to ITODA between 10000FT and 8000FT, to KAHOC at or above 7000FT, to DAZAI at or above 5000FT, to HAWKS at or above 4000FT.

FIX	DESIGNATION	COORDINATES
	KIRIN	340717.9N 1304919.3E
ITODA	334242.2N 1304333.1E	
KAHOC	332847.4N 1304018.8E	
DAZAI	332200.9N 1304208.1E	
HAWKS	331948.0N 1303730.0E	
Critical DME	TAE	KIRIN - 17NM to ITODA
	IKE	14NM to ITODA - 13NM to ITODA
	TTE	14NM to ITODA - 13NM to ITODA 11NM to ITODA - 10NM to ITODA 6NM to ITODA - 8NM to KAHOC 6NM to KAHOC - HAWKS
	DGC	KAHOC - HAWKS
DME GAP	-	
Inappropriate Nav aids	See AD1.1.6.10.3. Inappropriate NAVAIDs for RNAV1	

HAWKS WEST RNAV ARRIVAL

From GENKO, to YOBKO at or above 7000FT, to SOFTO, to BANKU at or above 5000FT, to HAWKS at or above 4000FT.

FIX	DESIGNATION	COORDINATES
	GENKO	333011.9N 1295024.8E
YOBKO	333536.8N 1294900.6E	
SOFTO	333728.3N 1295918.1E	
BANKU	331739.9N 1303302.5E	
HAWKS	331948.0N 1303730.0E	
Critical DME	IKE	YOBKO - 26NM to BANKU
	KUE	13NM to BANKU - 11NM to BANKU
	DGC	6NM to BANKU - 1NM to BANKU
	SGE	1NM to BANKU - HAWKS
DME GAP	-	
Inappropriate Nav aids	See AD1.1.6.10.3. Inappropriate NAVAIDs for RNAV1	

HAWKS EAST RNAV ARRIVAL

Rcmd. Path Terminator	Fix ID (Waypoint Name)	Fly Over	Distance (NM)	MAG Track (TRUE Track)	Turn Direction	Altitude (FT)	Speed Limit (KIAS)	Vertical Angle	Navigation Performance
IF	KIRIN	—	—	—	—	+12000	—	—	RNAV1
TF	ITODA	—	25.0	198° (191.0°)	—	10000 8000	—	—	RNAV1
TF	KAHOC	—	14.2	198° (191.0°)	—	+7000	—	—	RNAV1
TF	DAZAI	—	6.9	174° (167.3°)	—	+5000	—	—	RNAV1
TF	HAWKS	—	4.5	247° (240.3°)	—	+4000	—	—	RNAV1

HAWKS WEST RNAV ARRIVAL

Rcmd. Path Terminator	Fix ID (Waypoint Name)	Fly Over	Distance (NM)	MAG Track (TRUE Track)	Turn Direction	Altitude (FT)	Speed Limit (KIAS)	Vertical Angle	Navigation Performance
IF	GENKO	—	—	—	—	—	—	—	RNAV1
TF	YOBKO	—	5.5	354° (347.8°)	—	+7000	—	—	RNAV1
TF	SOFTO	—	8.8	084° (077.7°)	—	—	—	—	RNAV1
TF	BANKU	—	34.5	132° (125.0°)	—	+5000	—	—	RNAV1
TF	HAWKS	—	4.3	067° (060.2°)	—	+4000	—	—	RNAV1

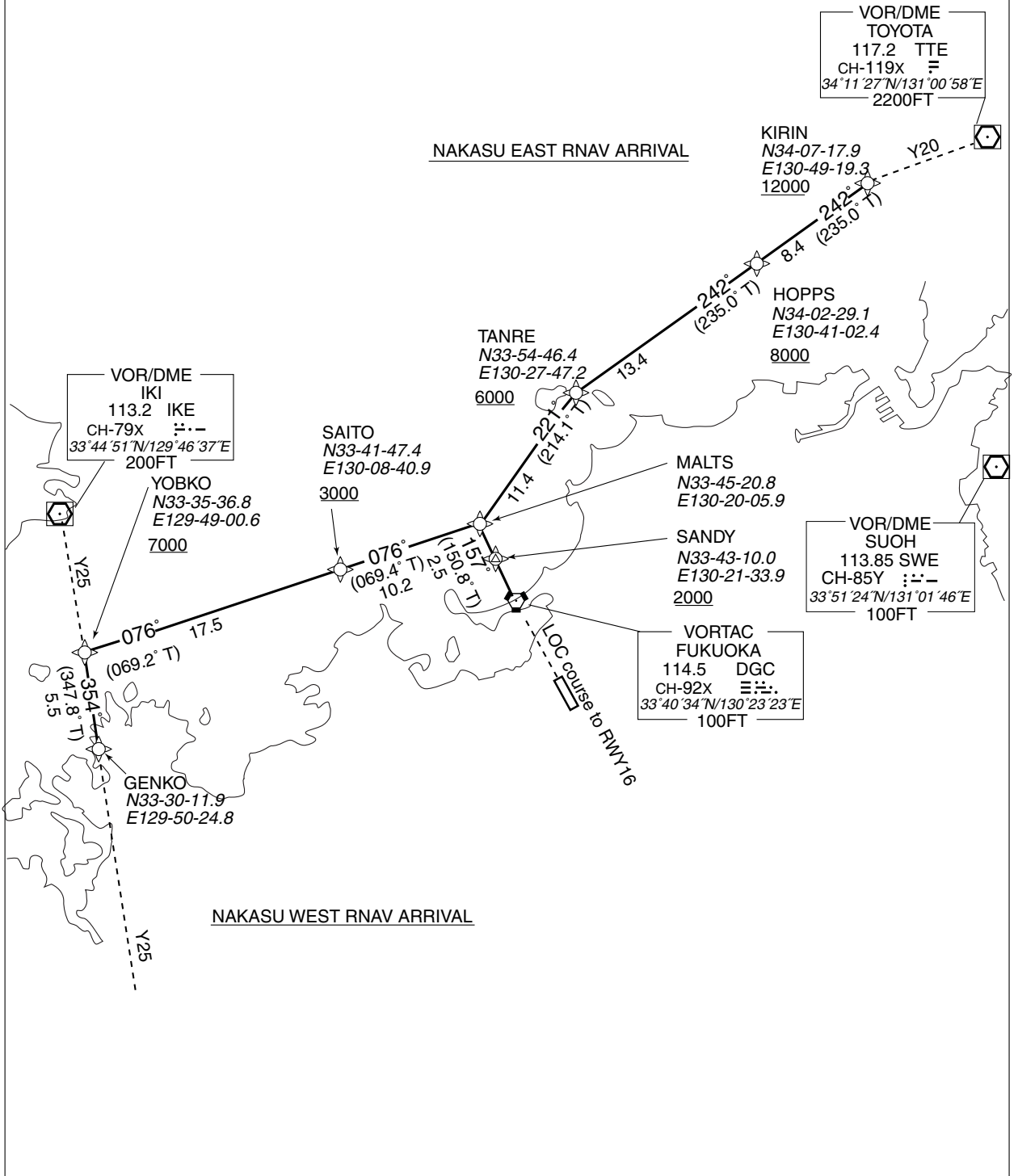
STANDARD ARRIVAL CHART-INSTRUMENT

RJFF / FUKUOKA RNAV STAR RWY16

NAKASU EAST RNAV ARRIVAL / NAKASU WEST RNAV ARRIVAL	RNAV 1
---	--------

Note 1) DME/DME/IRU or GNSS required.
2) RADAR service required.

VAR 7° W(2007)



STANDARD ARRIVAL CHART-INSTRUMENT

RJFF / FUKUOKA

RNAV STAR RWY16

NAKASU EAST RNAV ARRIVAL

From KIRIN at or above 12000FT, to HOPPS at or above 8000FT, to TANRE at or above 6000FT, to MALTS, to SANDY at or above 2000FT.

FIX	DESIGNATION	COORDINATES
	KIRIN	340717.9N 1304919.3E
HOPPS	340229.1N 1304102.4E	
TANRE	335446.4N 1302747.2E	
MALTS	334520.8N 1302005.9E	
SANDY	334310.0N 1302133.9E	
Critical DME	TAE	KIRIN - 5NM to HOPPS
	DGC	1NM to HOPPS - 3NM to MALTS
DME GAP	-	
Inappropriate Nav aids	See AD1.1.6.10.3. Inappropriate NAVAIDs for RNAV1	

NAKASU WEST RNAV ARRIVAL

From GENKO, to YOBKO at or above 7000FT, to SAITO at or above 3000FT, to MALTS, to SANDY at or above 2000FT.

FIX	DESIGNATION	COORDINATES
	GENKO	333011.9N 1295024.8E
YOBKO	333536.8N 1294900.6E	
SAITO	334147.4N 1300840.9E	
MALTS	334520.8N 1302005.9E	
SANDY	334310.0N 1302133.9E	
Critical DME	IKE	YOBKO - 6NM to SAITO
	DGC	7NM to SAITO - 3NM to MALTS
DME GAP	-	
Inappropriate Nav aids	See AD1.1.6.10.3. Inappropriate NAVAIDs for RNAV1	

NAKASU EAST RNAV ARRIVAL

Rcmd. Path Terminator	Fix ID (Waypoint Name)	Fly Over	Distance (NM)	MAG Track (TRUE Track)	Turn Direction	Altitude (FT)	Speed Limit (KIAS)	Vertical Angle	Navigation Performance
IF	KIRIN	-	-	-	-	+12000	-	-	RNAV1
TF	HOPPS	-	8.4	242° (235.0°)	-	+8000	-	-	RNAV1
TF	TANRE	-	13.4	242° (235.0°)	-	+6000	-	-	RNAV1
TF	MALTS	-	11.4	221° (214.1°)	-	-	-	-	RNAV1
TF	SANDY	-	2.5	157° (150.8°)	-	+2000	-	-	RNAV1

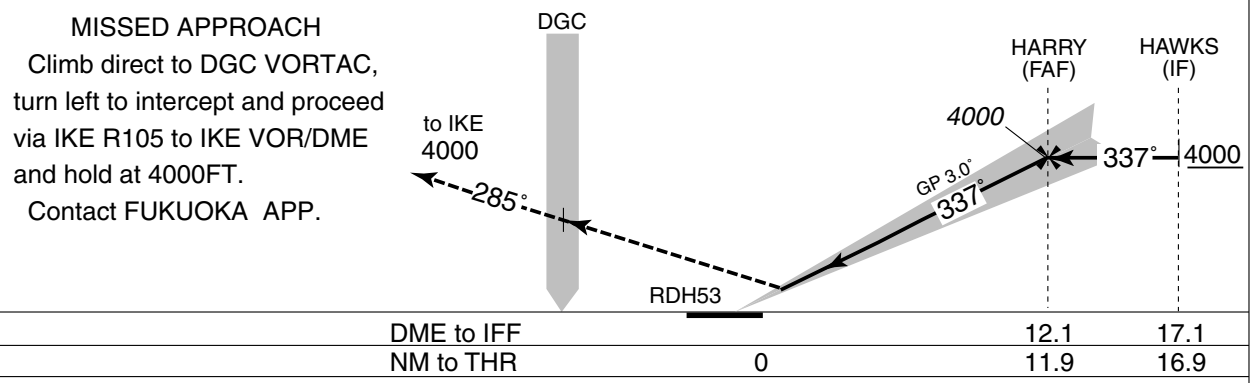
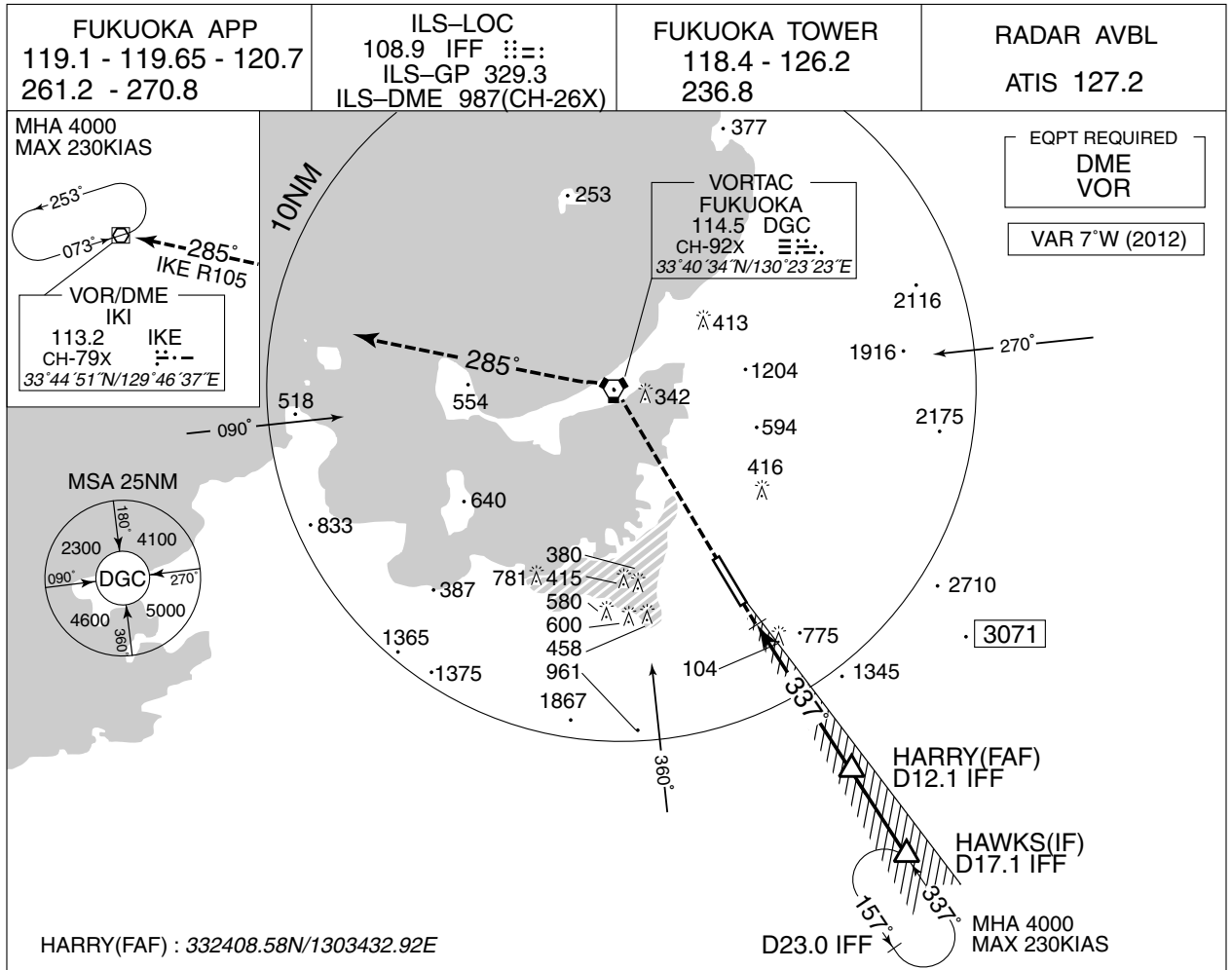
NAKASU WEST RNAV ARRIVAL

Rcmd. Path Terminator	Fix ID (Waypoint Name)	Fly Over	Distance (NM)	MAG Track (TRUE Track)	Turn Direction	Altitude (FT)	Speed Limit (KIAS)	Vertical Angle	Navigation Performance
IF	GENKO	-	-	-	-	-	-	-	RNAV1
TF	YOBKO	-	5.5	354° (347.8°)	-	+7000	-	-	RNAV1
TF	SAITO	-	17.5	076° (069.2°)	-	+3000	-	-	RNAV1
TF	MALTS	-	10.2	076° (069.4°)	-	-	-	-	RNAV1
TF	SANDY	-	2.5	157° (150.8°)	-	+2000	-	-	RNAV1

INSTRUMENT APPROACH CHART

RJFF / FUKUOKA

ILS RWY 34



MINIMA		THR elev. 32	AD elev. 30	
CAT	CAT I		CIRCLING	
	DA(H)	RVR/CMV	MDA(H)	VIS
A	232 (200)	550	830 (800)	1600
B			1020 (990)	2400
C			1030 (1000)	3200
D				

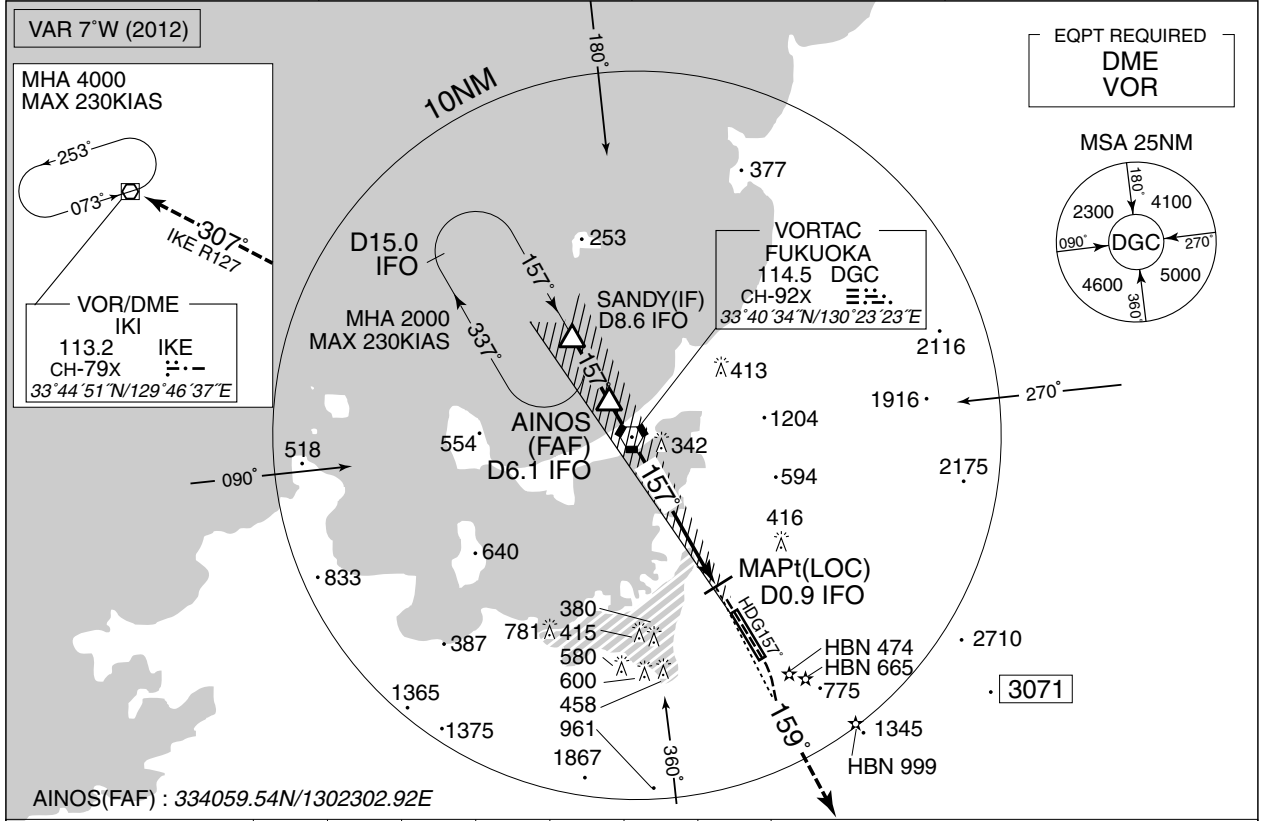
Circling to WEST side of RWY only.

INSTRUMENT APPROACH CHART

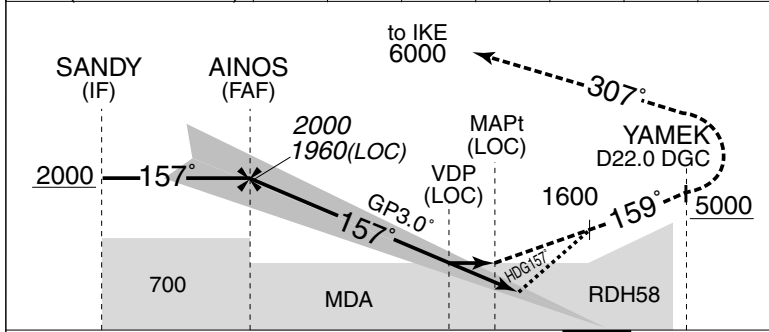
RJFF / FUKUOKA

ILS or LOC RWY 16

FUKUOKA APP 119.1 - 119.65 - 120.7 261.2 - 270.8	ILS-LOC 111.7 IFO ::=: ILS-GP 333.5 ILS-DME 1015(CH-54X)	FUKUOKA TOWER 118.4 - 126.2 236.8	RADAR AVBL ATIS 127.2
--	---	---	--------------------------



NM to IFO	FAF	6	5	4	3	2	MAPt
ALT (3.0° APCH Path)	1960	1919	1600	1282	964	645	-



MISSED APPROACH
Climb on HDG 157° to 1600FT, turn right climb to 6000FT via DGC R159 to YAMEK, turn right HDG 352° to intercept and proceed via IKE R127 to IKE VOR/DME and hold. Cross YAMEK at or above 5000FT, cross IKE R127/37.0DME at 6000FT. Contact FUKUOKA APP.
Timing not authorized for defining the MAPt.

8.6	6.1	1.9	0.9	DME to IFO
8.5	6.0	1.7	0.7	NM to THR

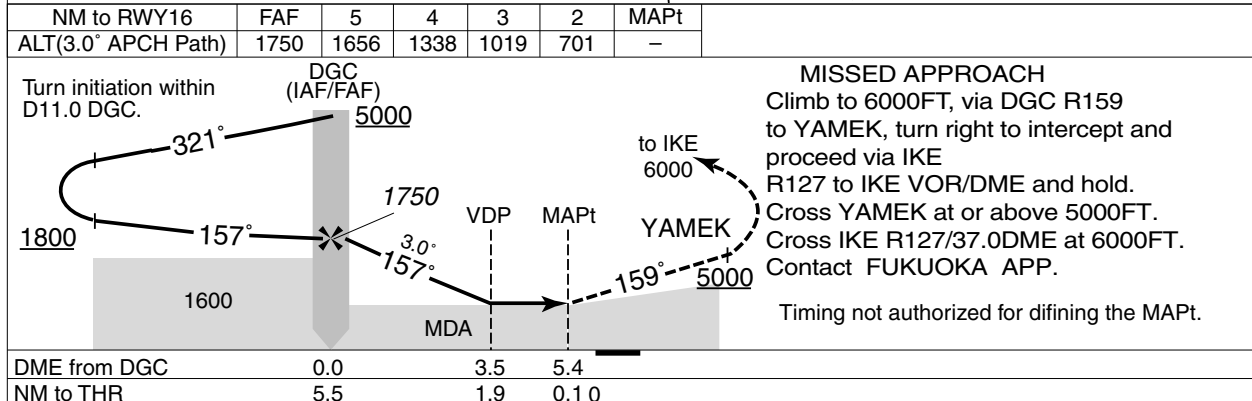
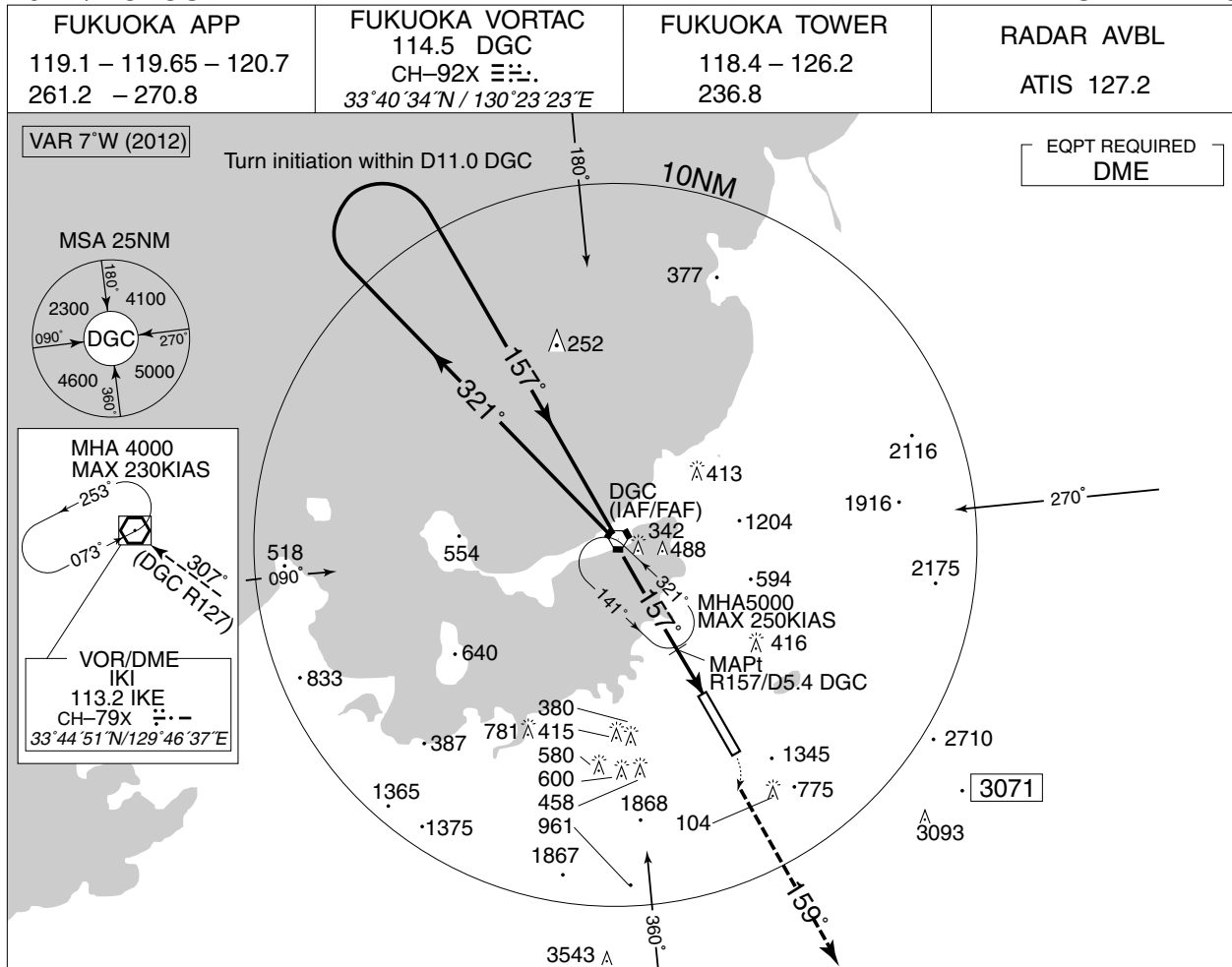
Missed APCH climb gradient MNM 5.0%						
MINIMA			THR elev. 15	AD elev. 30		
CAT	CAT I		LOC		CIRCLING	
	DA(H)	RVR/CMV	MDA(H)	RVR/CMV	MDA(H)	VIS
A	215 (200)	550	590 (575)	1000	830 (800)	1600
B				1200		
C				1020 (990)	2400	
D				1600	1030 (1000)	3200

MINIMA with Missed APCH climb gradient of 2.5% are not established.
Circling to WEST side of RWY only.

INSTRUMENT APPROACH CHART

RJFF / FUKUOKA

VOR RWY 16



Missed APCH climb gradient MNM 4.3%

MINIMA		THR elev. 15	AD elev. 30		
CAT	MDA(H)	RVR/CMV	CIRCLING		
			MDA(H)	VIS	
A	630 (615)	1000	830 (800)	1600	
B		1200	1020 (990)	2400	
C			1600	1030 (1000)	3200
D					

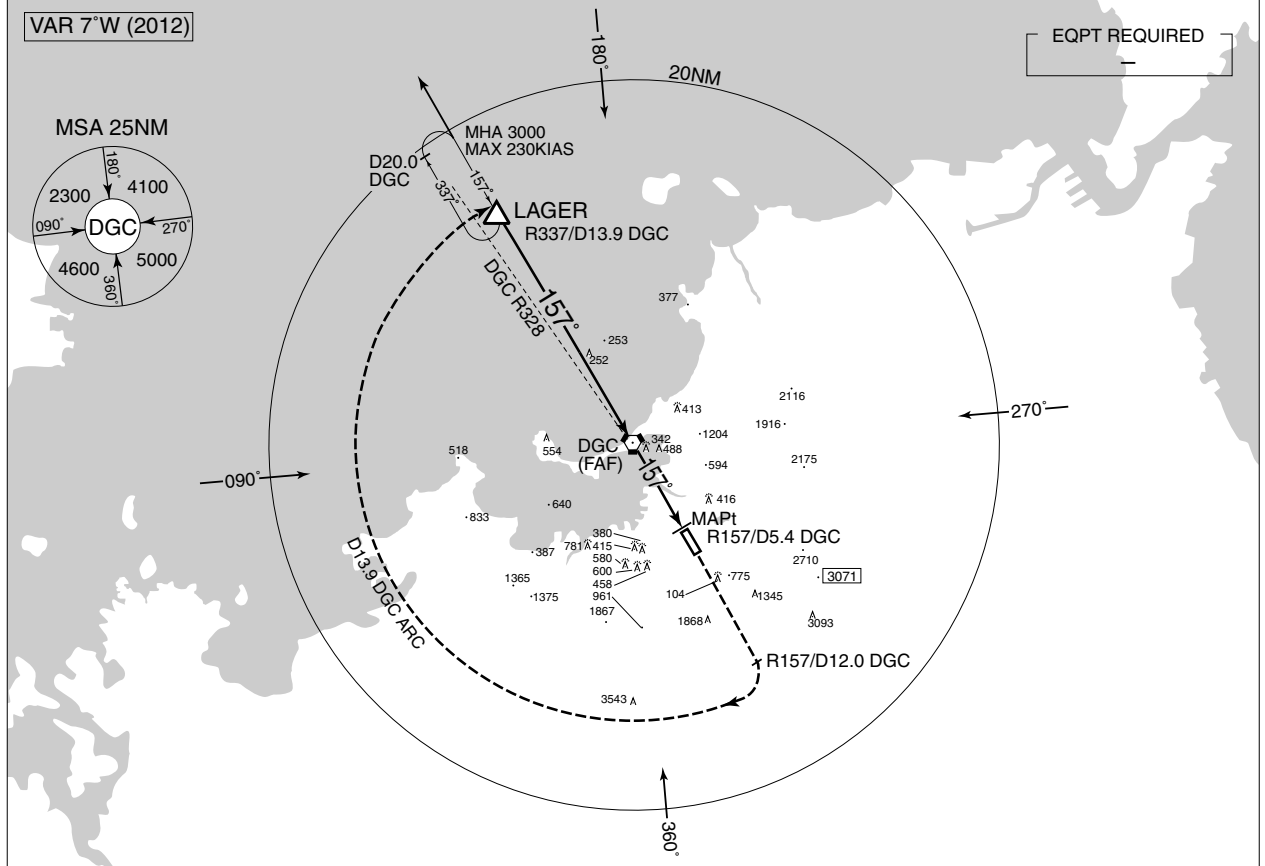
Circling to WEST side of RWY only.
 MINIMA with Missed APCH climb gradient of 2.5% are not established.

INSTRUMENT APPROACH CHART

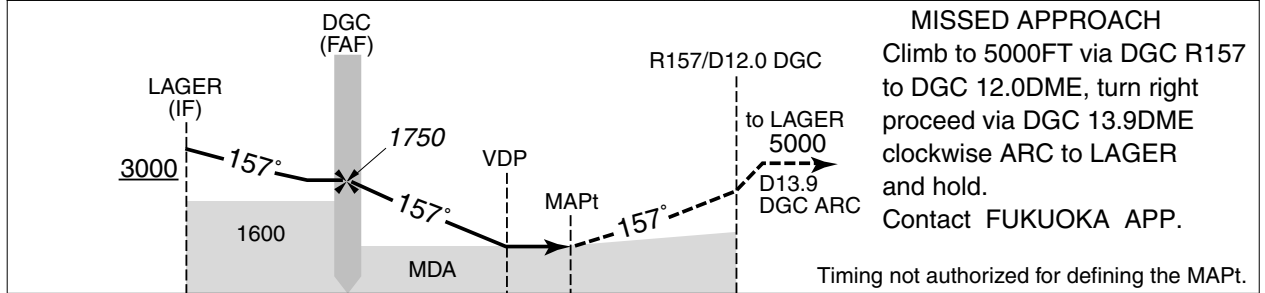
RJFF / FUKUOKA

TACAN RWY 16

FUKUOKA APP 119.1 – 119.65 – 120.7 261.2 – 270.8	FUKUOKA VORTAC 114.5 DGC CH-92X $\equiv \text{---}$ 33°40'34"N / 130°23'23"E	FUKUOKA TOWER 118.4 – 126.2 236.8	RADAR AVBL ATIS 127.2
--	---	---	--------------------------



NM to RWY16	FAF	5	4	3	2	MAPt
ALT(3.0° APCH Path)	1750	1656	1338	1019	701	-



DME from DGC	13.9	0.0	3.5	5.4
NM to THR	19.5	5.5	1.9	0.1

Missed APCH climb gradient MNM 5.0%

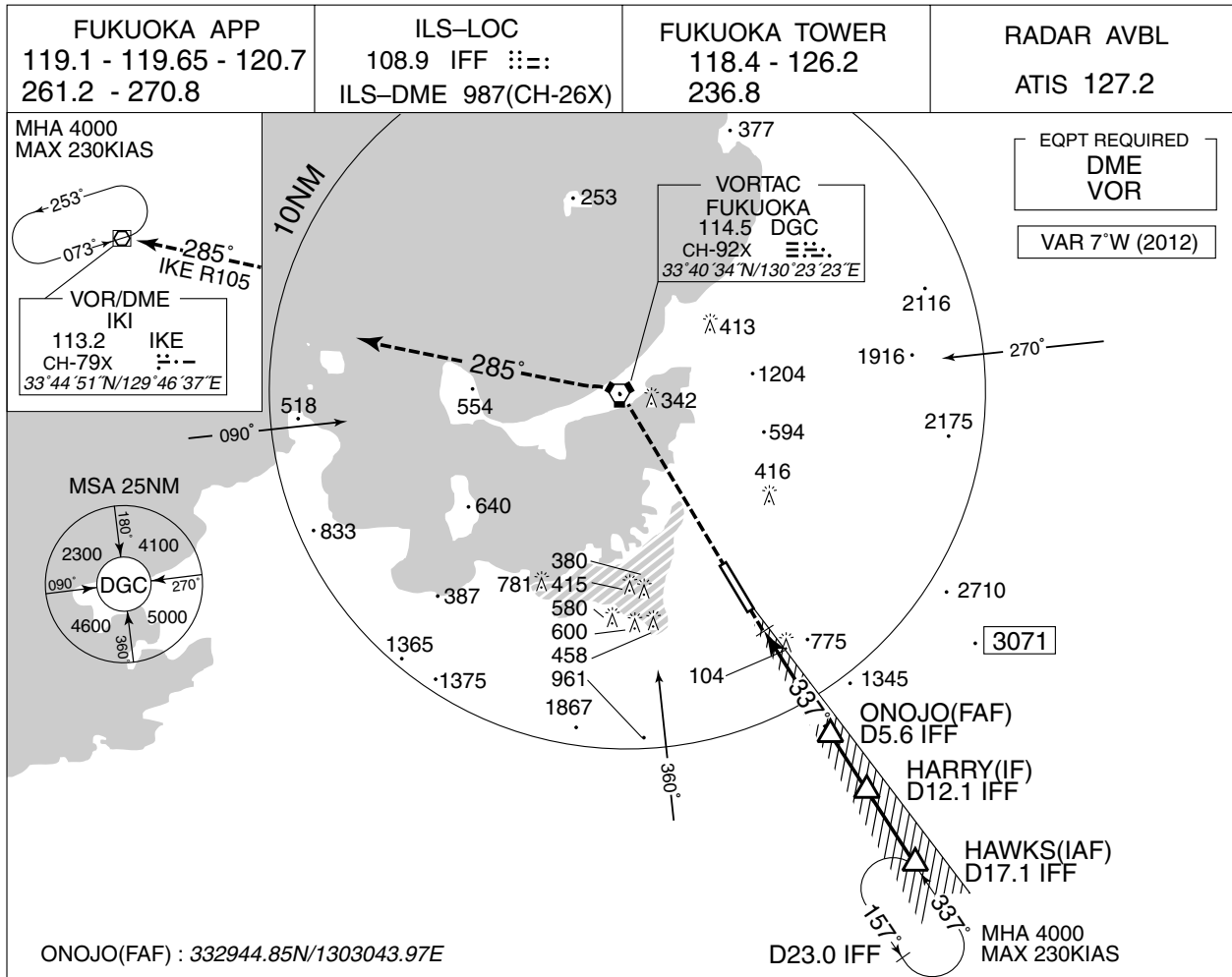
CAT	MINIMA		CIRCLING	
	MDA(H)	RVR/CMV	MDA(H)	VIS
A	630 (615)	1000	830 (800)	1600
B		1200		
C			1020 (990)	2400
D		1600	1030 (1000)	3200

Circling to WEST side of RWY only.
MINIMA with Missed APCH climb gradient of 2.5% are not established.

INSTRUMENT APPROACH CHART

RJFF / FUKUOKA

LOC RWY 34

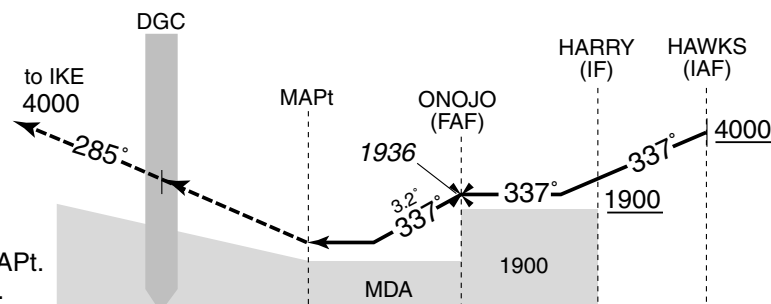


MAPt	2	3	4	5	FAF	NM to IFF
-	701	1041	1381	1720	1936	ALT (3.2° APCH Path)

MISSED APPROACH

Climb direct to DGC VORTAC,
turn left to intercept and proceed
via IKE R105 to IKE VOR/DME
and hold at 4000FT.
Contact FUKUOKA APP.

Timing not authorized for defining the MAPt.
PAPI and descent angles not coincident.



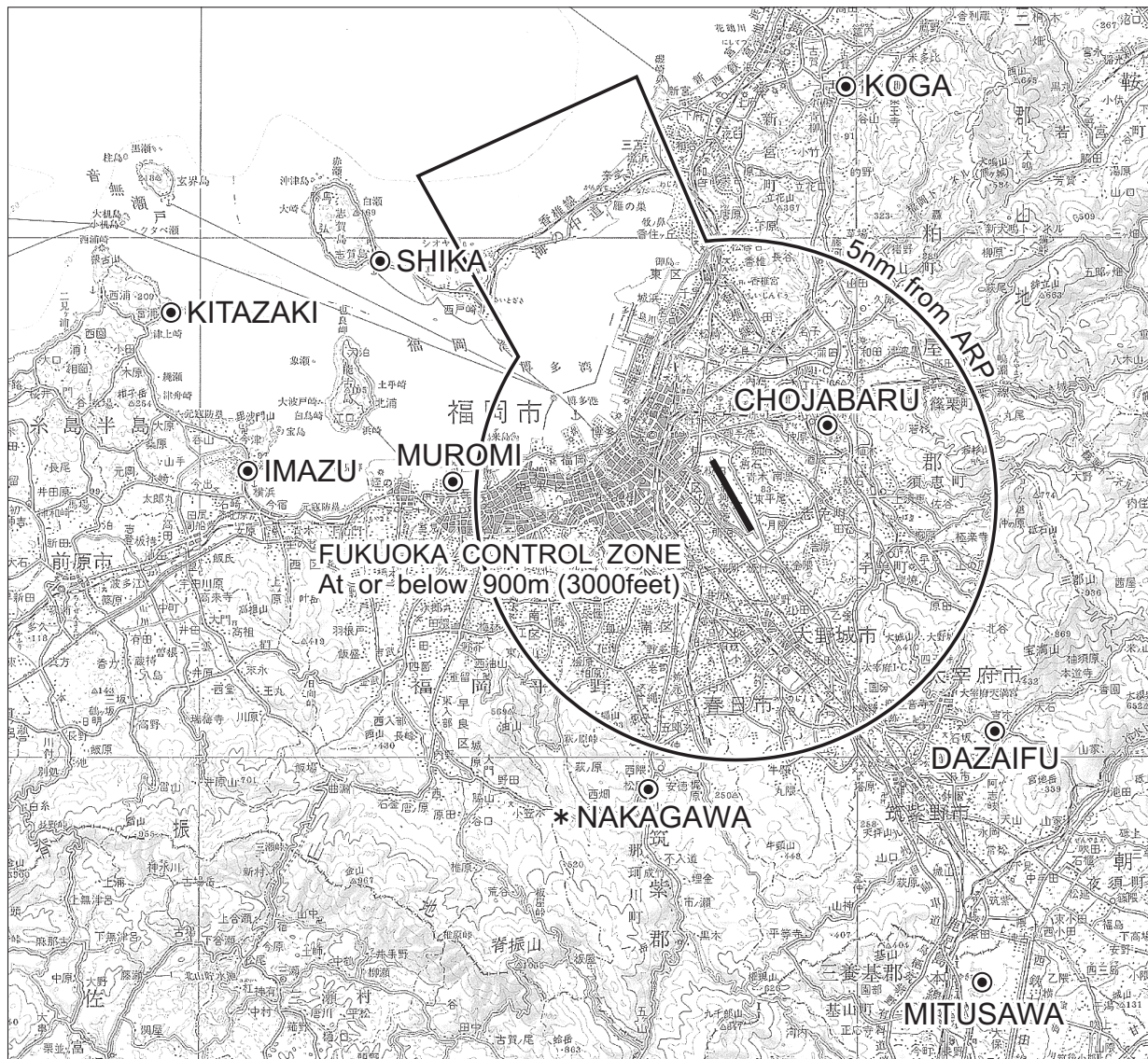
DME to IFF	0.6	5.6	12.1	17.1
NM to THR	0.5	5.5	11.9	16.9

CAT	THR elev. 32		AD elev. 30	
	MDA(H)	RVR/CMV	MDA(H)	VIS
A	680 (650)	1200	830 (800)	1600
B		1400	1020 (990)	2400
C			1030 (1000)	3200
D		1800	1030 (1000)	3200

Circling to WEST side of RWY only.

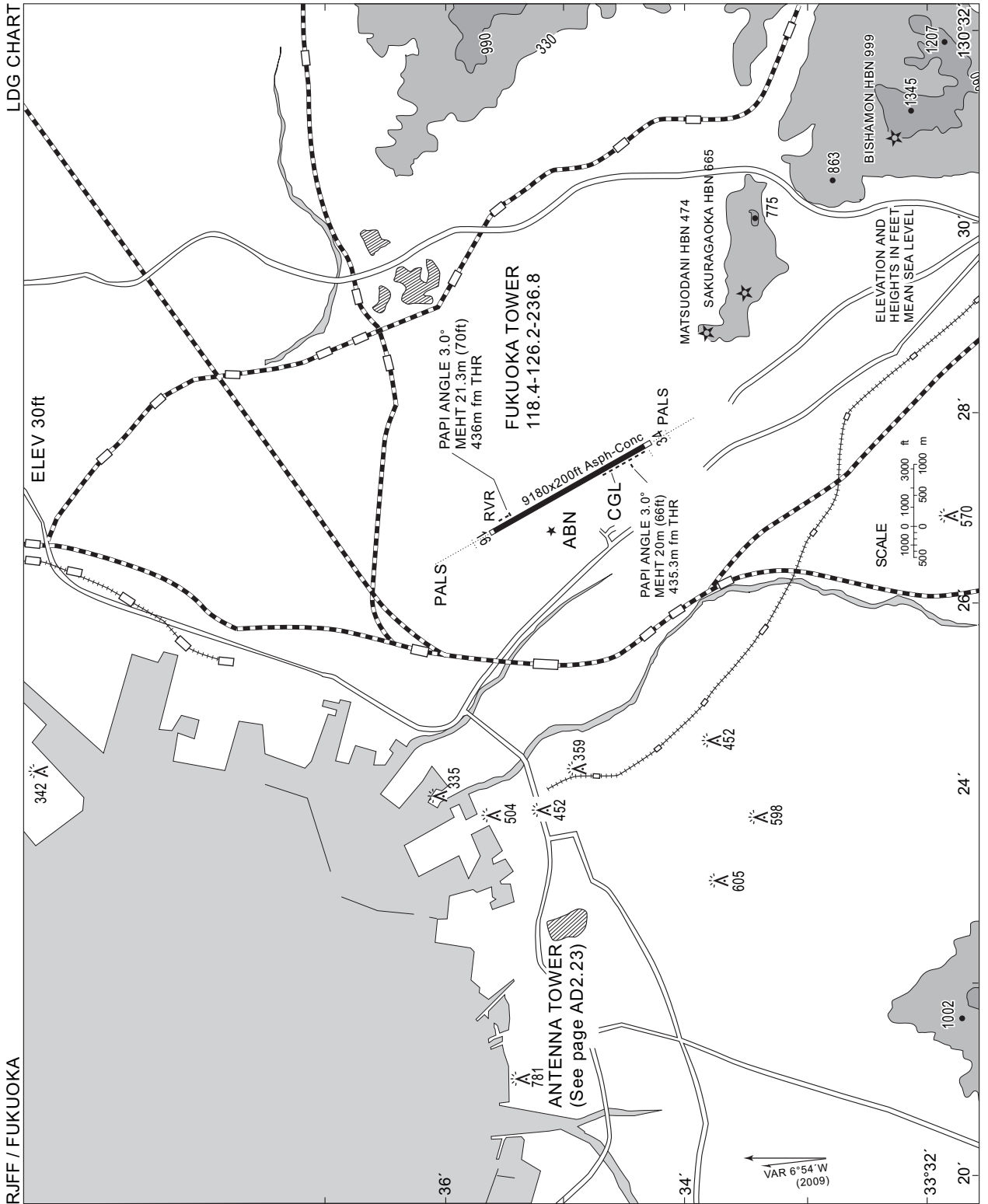
RJFF

FUKUOKA Visual REP



Call sign	BRG / DIST from ARP	Remarks
古賀 koga	014°/ 8.4NM	高速道路インターチェンジ Interchange
長者原 Chojabaru	046°/ 2.3NM	ドーム型建造物 Dome
太宰府 Dazaifu	133°/ 6.4NM	ゴルフ場 Golf Course
三沢 Mitusawa	153°/10.4NM	ゴルフ場 Golf Course
* 那珂川 Nakagawa	196°/ 5.9NM	松尾橋 Bridge
室見 Muromi	273°/ 5.5NM	室見川河口 River - Mouth
今津 Imazu	273°/ 9 NM	今津橋 Bridge
志賀 Shika	303°/ 8 NM	志賀島橋 Bridge
北崎 Kitazaki	288°/12 NM	漁港 Harbor

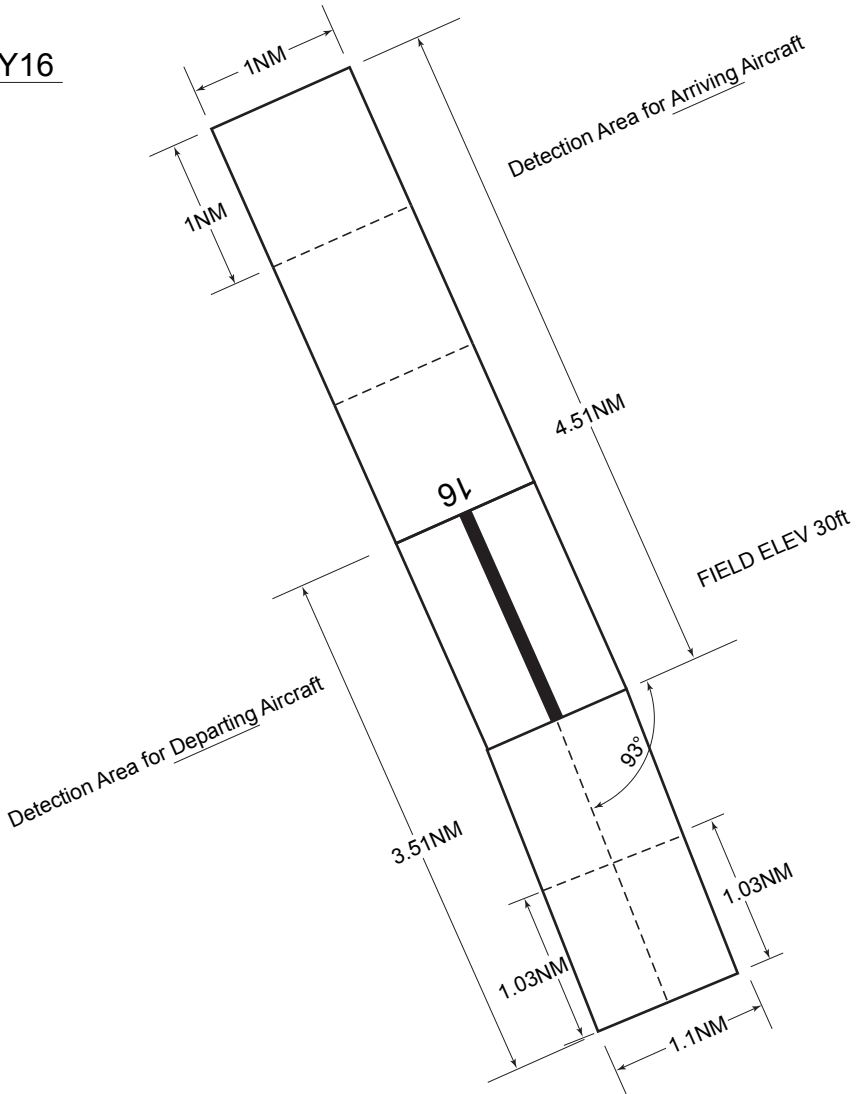
* ヘリコプター用 Use For Helicopter



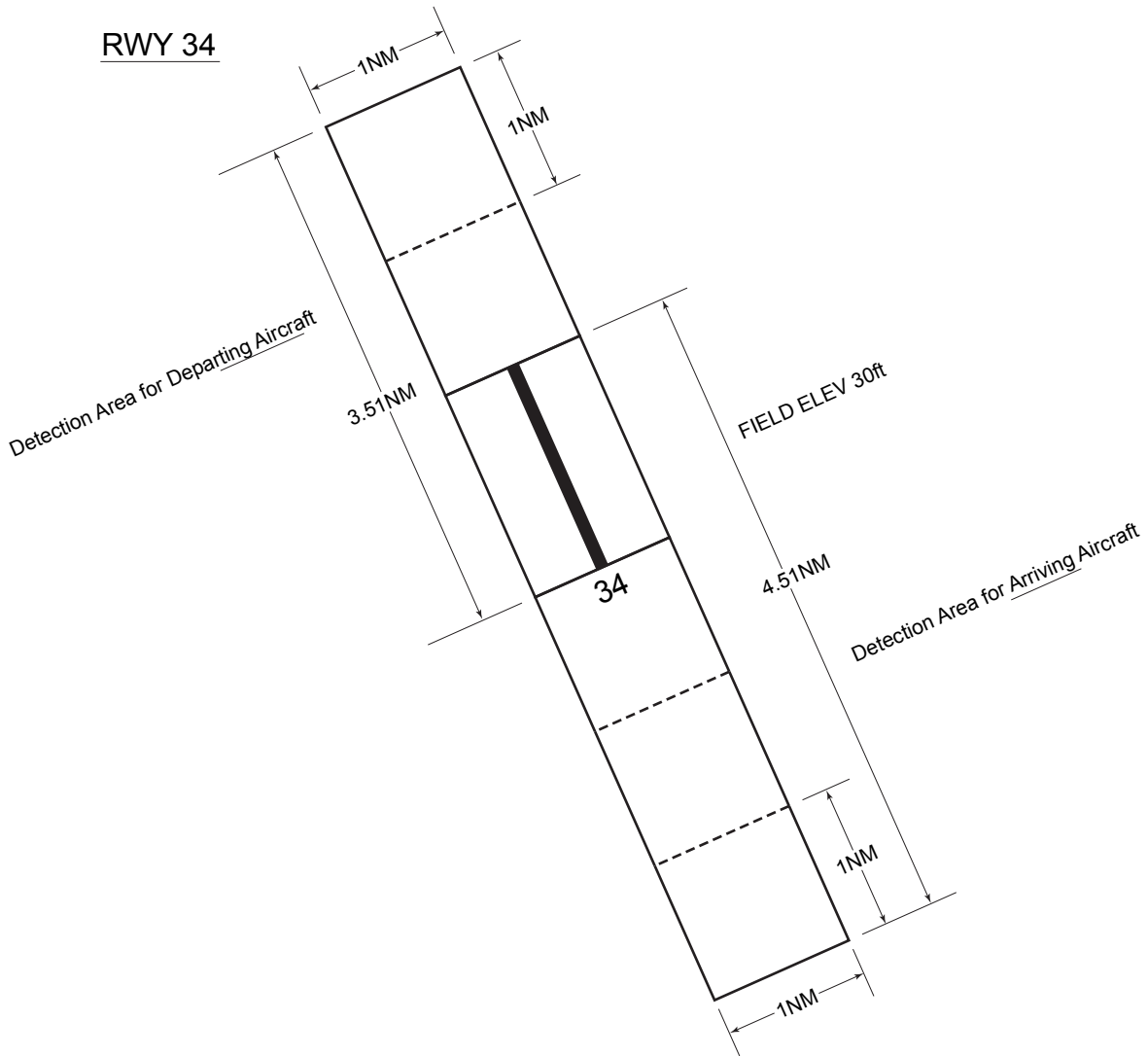
INTENTIONALLY LEFT BLANK

Airspace for the advisory service concerning low level wind shear

RWY16

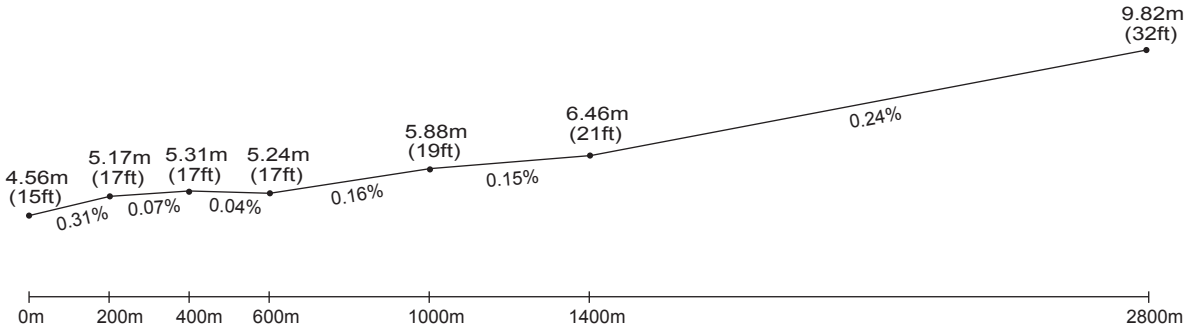


Airspace for the advisory service concerning low level wind shear



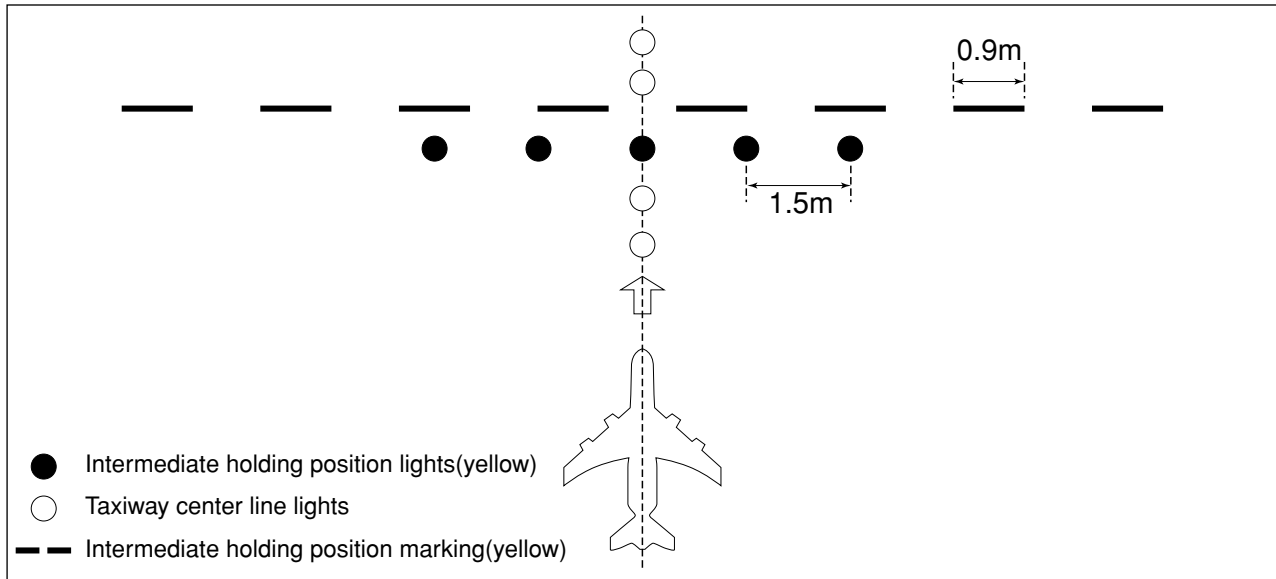
RWY16

RWY34



GP HOLD LINE

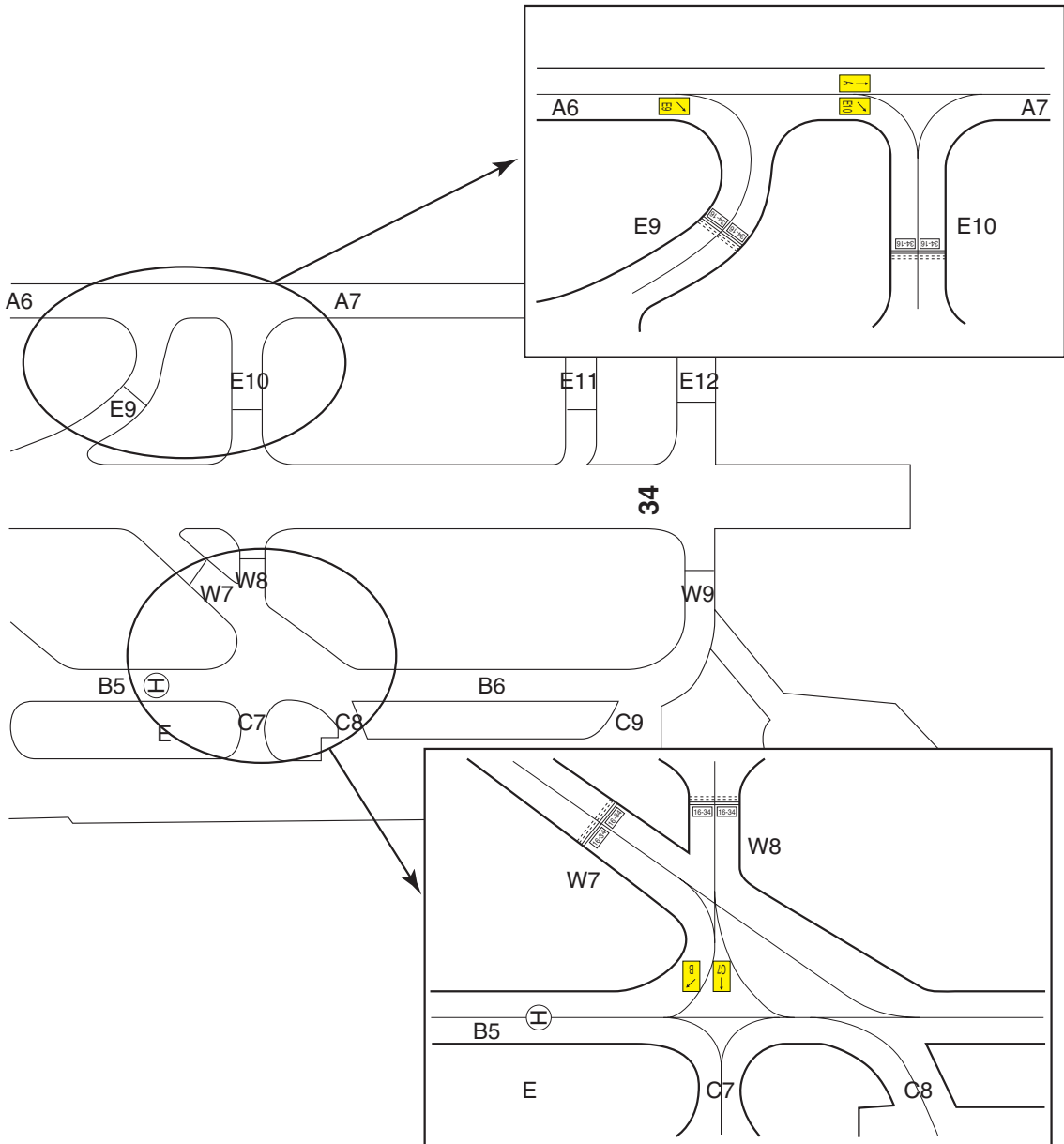
The "GP HOLD LINE" is installed on TWY B1 and B6, consists of Intermediate holding position lights and marking. (see below figure, and AD2-24.1 AD CHART) REF AD2.20.2.1 1) for taxiing procedure on the "GP HOLD LINE".



Surface Painted Direction Sign

Type of Surface Markings

This type of marking at a taxiway intersection indicates the designation and direction of taxiway leading out of an intersection. Black inscriptions with an arrow with a yellow background.

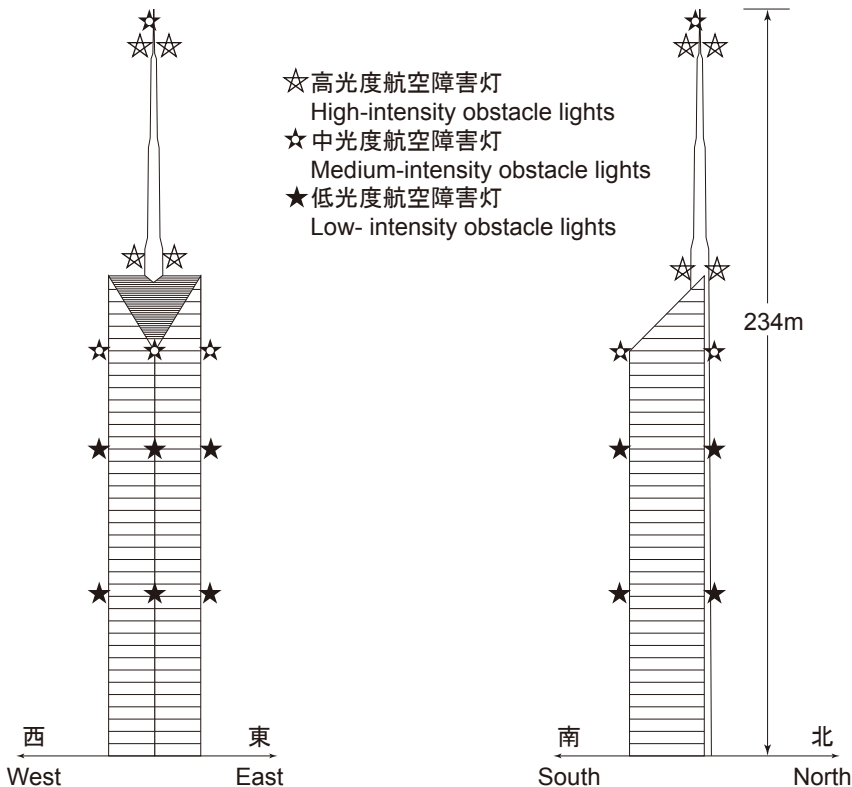


アンテナタワー

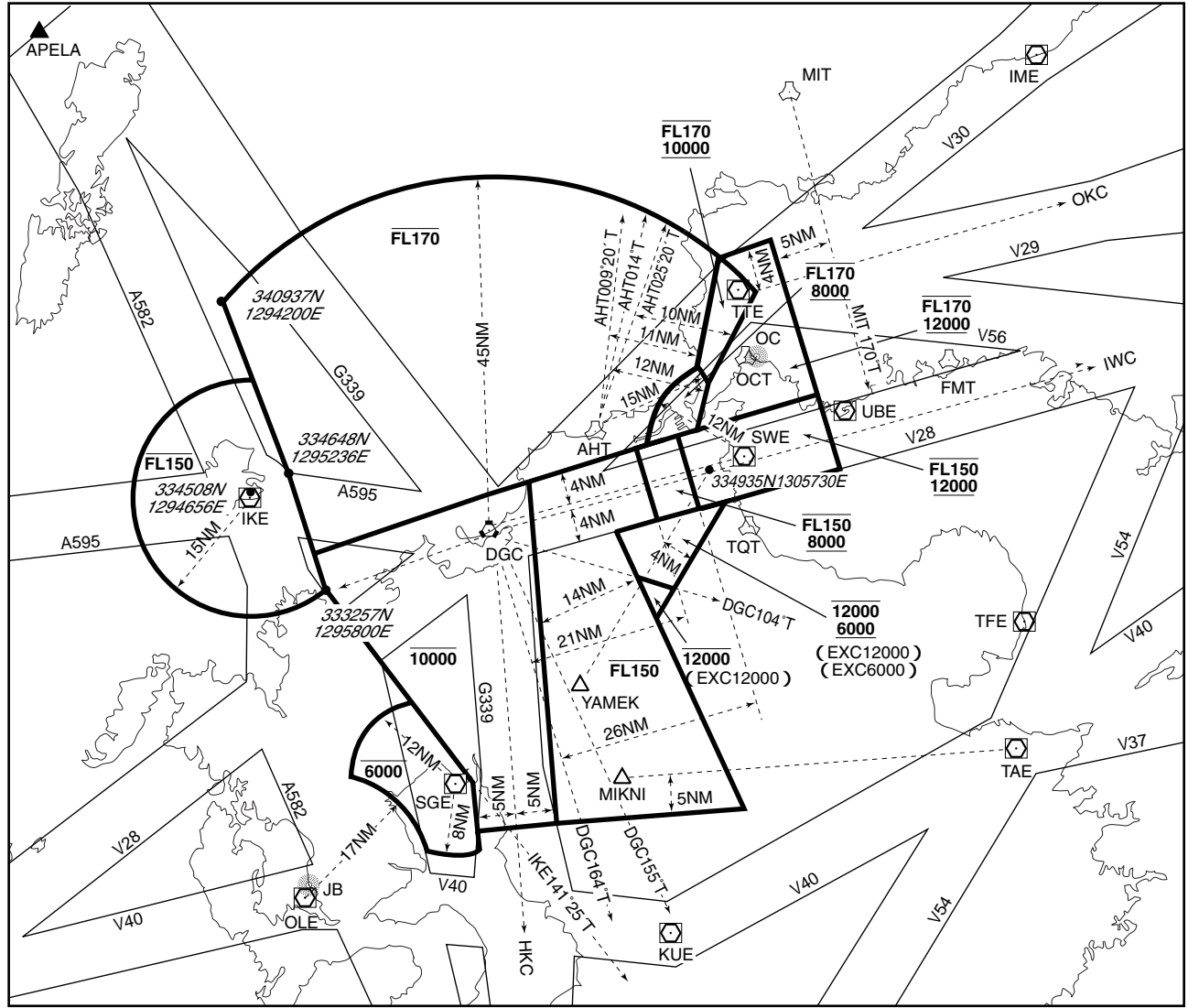
1. 位置 : $33^{\circ}35'36''N/130^{\circ}21'05''E$ (福岡空港標点から西9.3km)
--- AD2.24 LDG CHART参照
2. 高さ : 781FT (238M) MSL
768FT (234M) AGL
3. 備考 : 高光度, 中光度及び低光度航空障害灯が付図のとおり設置されている。

Antenna Tower

1. Position : $33^{\circ}35'36''N/130^{\circ}21'05''E$ (9.3km W from FUKUOKA ARP)
---See AD2.24 LDG CHART
2. Height : 781FT (238M) MSL
768FT (234M) AGL
3. Remarks: High-intensity, medium-intensity and low-intensity obstacle lights are installed on this tower as shown in attached chart.

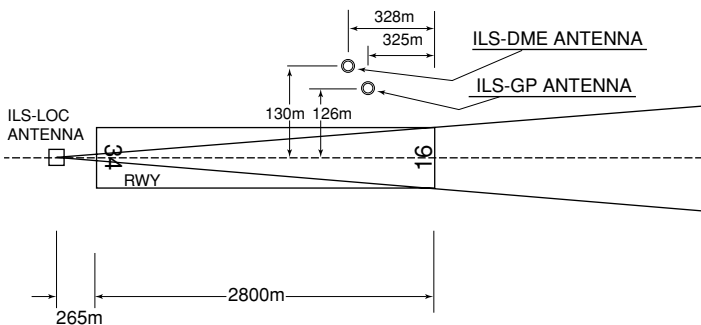


福岡進入管制区
Fukuoka Approach Control Area



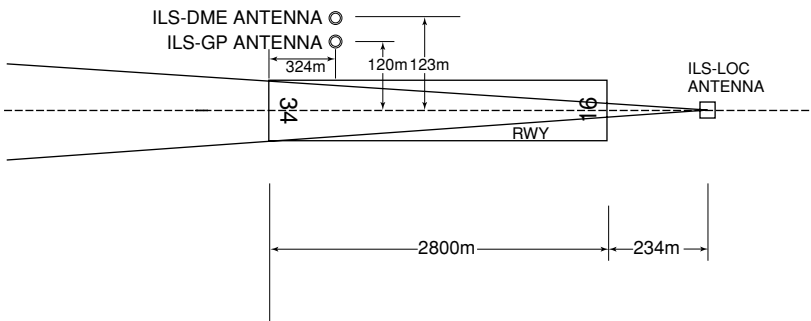
FUKUOKA AP

ILS for RWY16



REMARKS : 1.LOC beam BRG(MAG) 157°
 2.HGT of ILS REF datum 17.7m(58ft)
 3.GP Angle 3.0°
 4.ELEV of ILS-DME 9.3m (30ft)

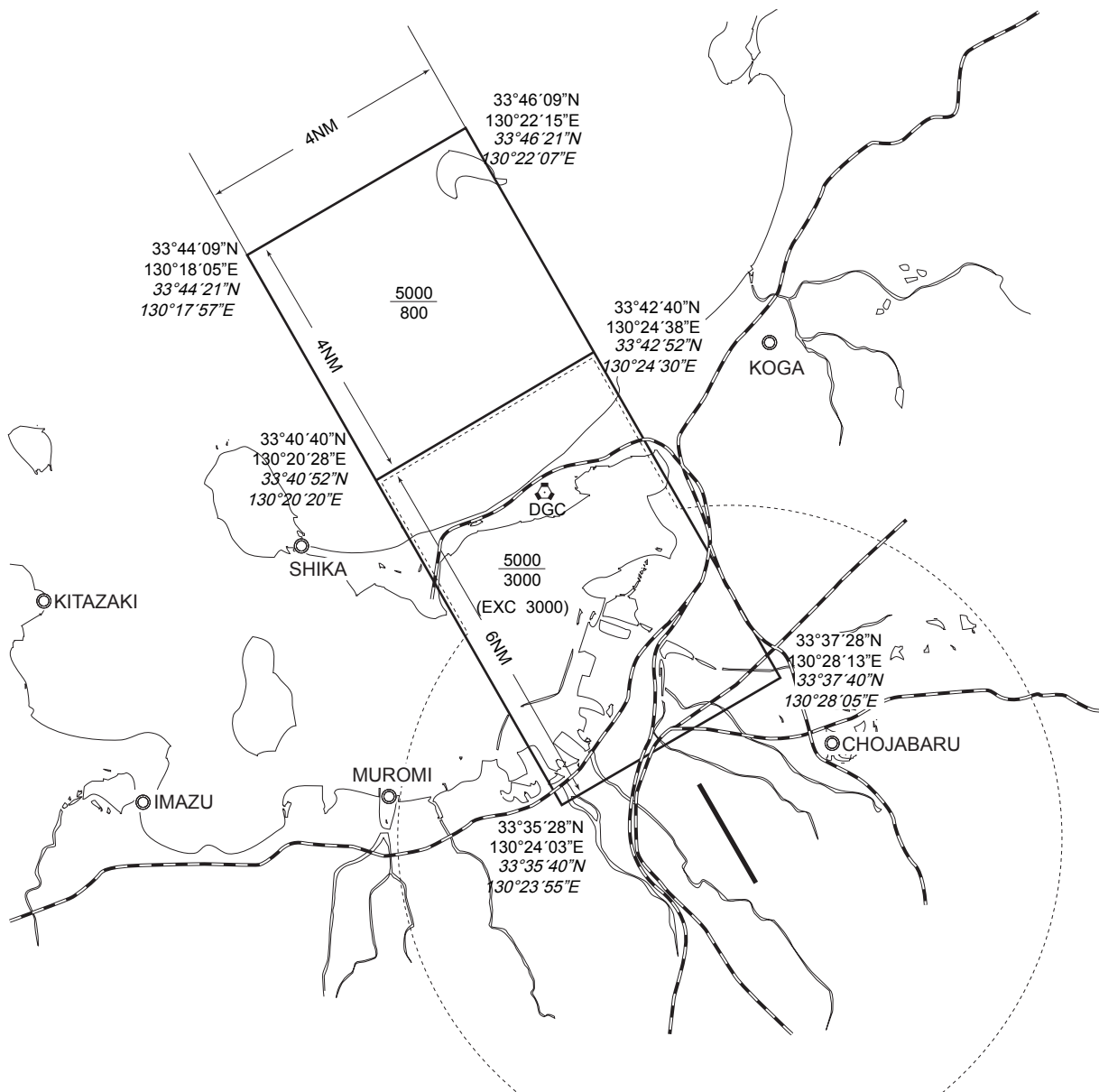
ILS for RWY34



REMARKS : 1.LOC beam BRG(MAG) 337°
 2.HGT of ILS REF datum 16.2m(53ft)
 3.GP Angle 3.0°
 4.ELEV of ILS-DME 14.0m(46ft)

福岡特別管制区
Fukuoka Positive Control Area

NAME	LATERAL LIMITS	UPPER LIMIT (AMSL)	UNIT PROVIDING SERVICE	REMARKS
		LOWER LIMIT (AMSL) M(ft)		
1	2	3	4	5
福岡 FUKUOKA	下記に示される区域 The area shown below		Primary Fukuoka APP 119.1 - 261.2 Secondary Fukuoka TWR 118.4 - 236.8	当該空域を飛行しようとする航空機は、福岡アプローチ又は福岡タワーに連絡し、コールサイン、現在位置、高度及び意図を通報し指示を受けること。 Pilot of aircraft operating in this area shall contact Fukuoka Approach or Fukuoka Tower for ATC instructions giving information on aircraft identification, positions, altitude and pilot's intentions.



福岡ターミナルコントロールエリア
Fukuoka Terminal Control Area

FUKUOKA APPROACH CONTROL

