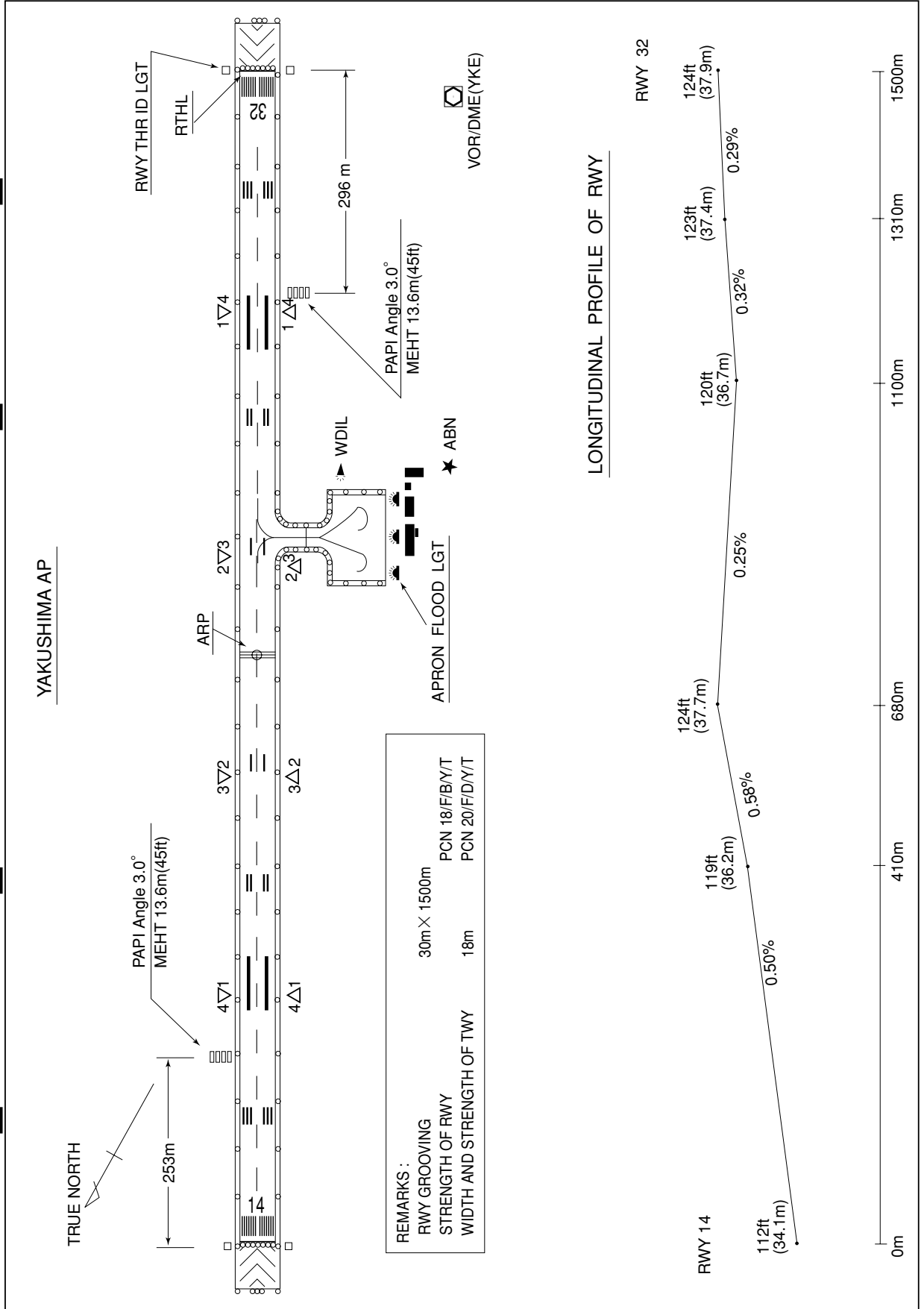


RJFC / YAKUSHIMA

AD CHART



STANDARD DEPARTURE CHART-INSTRUMENT

RJFC / YAKUSHIMA

SID

NAKATANE ONE DEPARTURE

RWY14 : Turn left,....

RWY32 : Turn right,....

....climb via YKE R-057 to TGE VOR/DME.

Cross TGE VOR/DME at or above 6,000FT.

NOTE : When take off RWY14, following climb gradient should be maintained until 600FT.

Speed (Knots)	60	90	120	150	180	210
Rate (Feet/Min)	300	450	600	750	900	1050

KAGOSHIMA FOUR DEPARTURE

RWY14 : Turn left,....

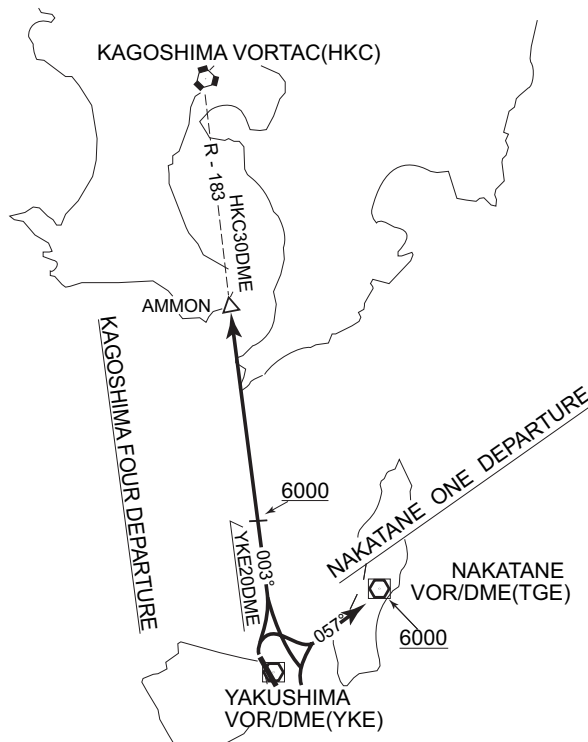
RWY32 : Turn right,....

....climb via YKE R-003 to AMMON.

Cross YKE R-003/20DME at or above 6,000FT.

NOTE : When take off RWY14, following climb gradient should be maintained until 600FT.

Speed (Knots)	60	90	120	150	180	210
Rate (Feet/Min)	300	450	600	750	900	1050



STANDARD ARRIVAL CHART-INSTRUMENT

RJFC / YAKUSHIMA

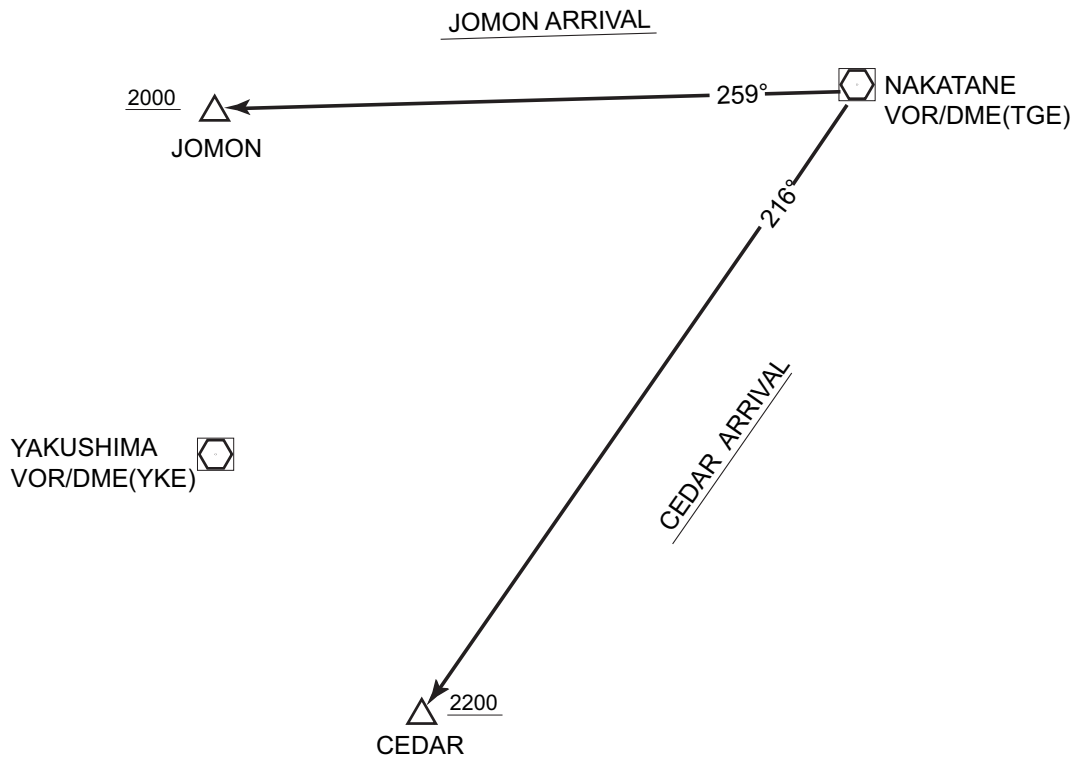
STAR

JOMON ARRIVAL

From over TGE VOR/DME, descend via TGE R-259 to JOMON.
Cross JOMON at or above 2,000 FT.

CEDAR ARRIVAL

From over TGE VOR/DME, descend via TGE R-216 to CEDAR.
Cross CEDAR at or above 2,200 FT.

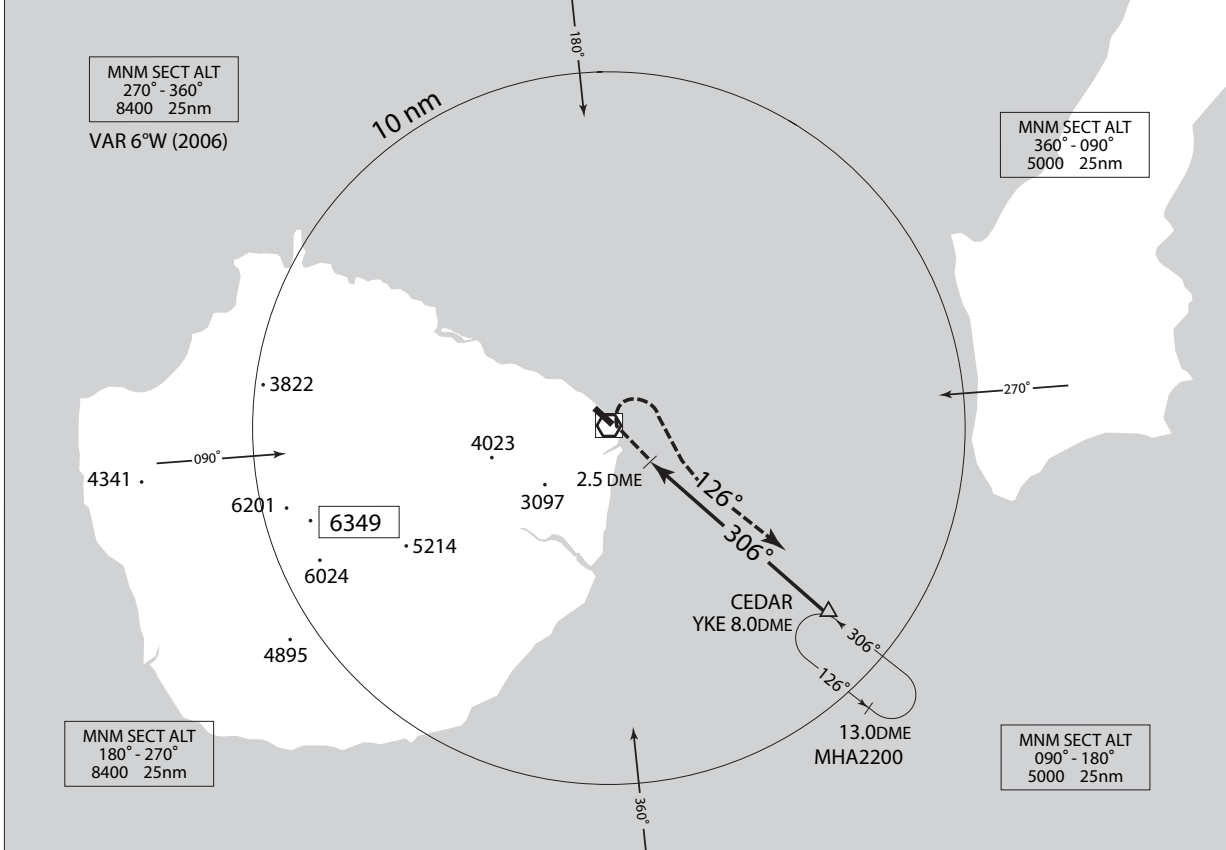


INSTRUMENT APPROACH CHART

RJFC / YAKUSHIMA

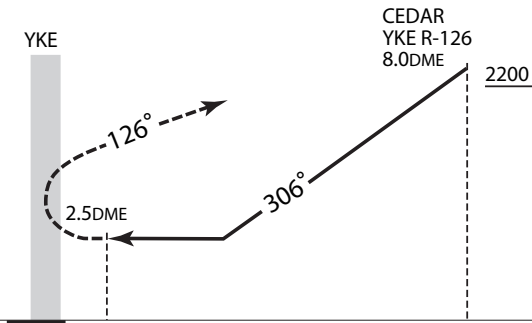
VOR/DME RWY 32

FUKUOKA CONTROL 133.85 - 132.6	YAKUSHIMA VOR/DME 117.0 YKE CH-117 30°22'46"N/130°39'46"E	YAKUSHIMA REMOTE 118.65	NO RADAR
-----------------------------------	--	----------------------------	----------



MISSED APPROACH

At 2.5 DME prior to YKE VOR/DME,
turn right and climb to 2,200ft via YKE
R-126 to CEDAR and hold.
Contact YAKUSHIMA REMOTE.



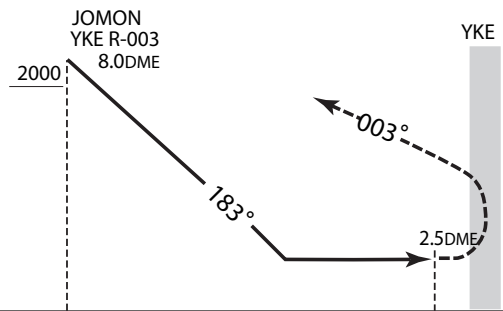
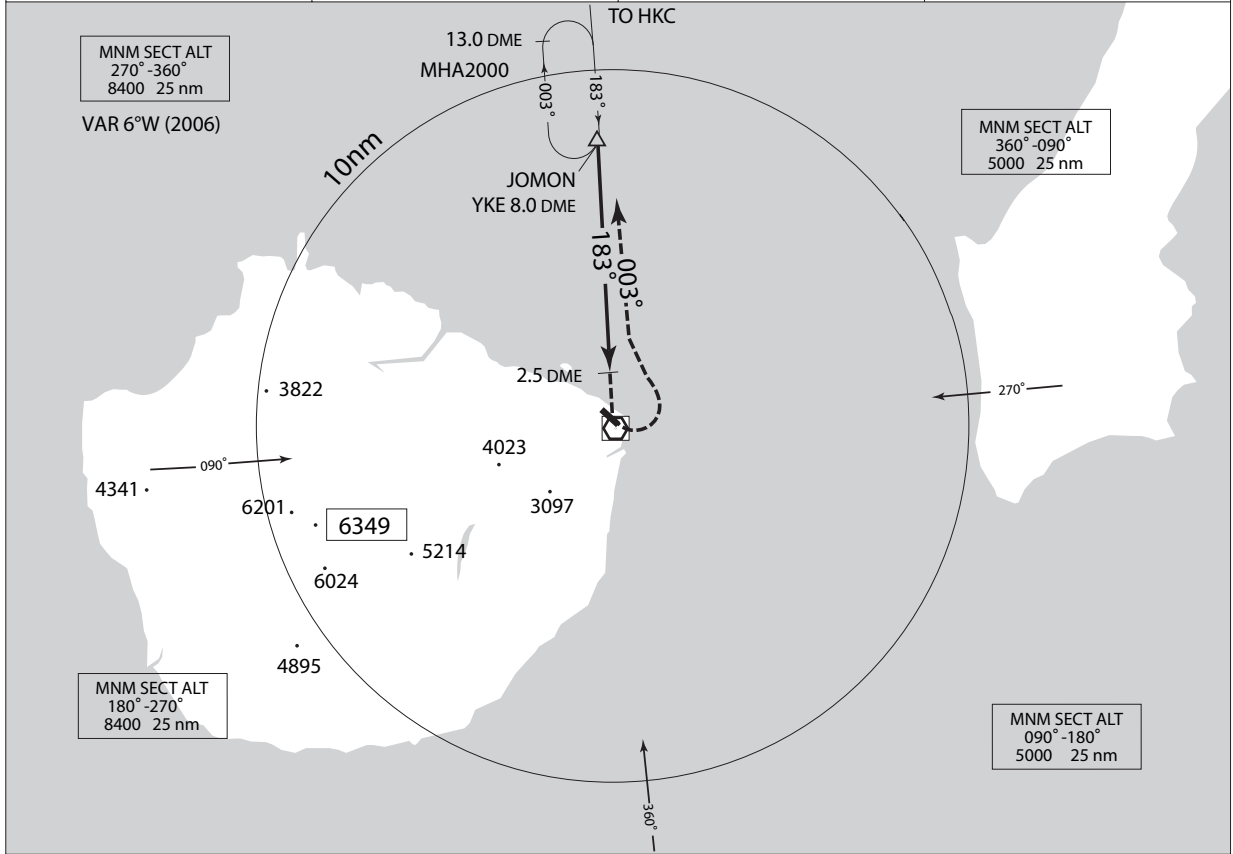
MINIMA		THR elev. 124	AD elev. 122	
CAT			CIRCLING	
	MDA(H)	CMV	MDA(H)	VIS
A	580 (458)	1500	700 (578)	1600
B		2000		2400
C	-	-	-	-
D	-	-	-	-

Circling to East side of RWY only.

INSTRUMENT APPROACH CHART

RJFC / YAKUSHIMA VOR/DME A

FUKUOKA CONTROL 133.85 - 132.6	YAKUSHIMA VOR/DME 117.0 YKE CH-117 $\equiv \equiv \equiv$ 30°22'46"N/130°39'46"E	YAKUSHIMA REMOTE 118.65	NO RADAR
-----------------------------------	---	----------------------------	----------



MISSED APPROACH
At 2.5 DME prior to YKE VOR/DME, turn left and climb to 2,000ft via YKE R-003 to JOMON and hold.
Contact YAKUSHIMA REMOTE.

MINIMA		AD elev. 122
CAT	CIRCLING	
	MDA(H)	VIS
A	700 (578)	1600
B		2400
C	-	-
D	-	-

Circling to East side of RWY only.

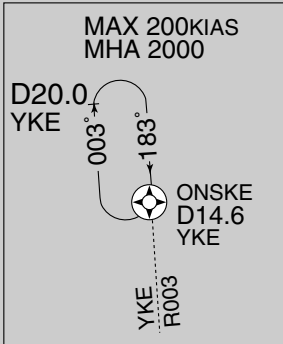
INSTRUMENT APPROACH CHART

RJFC / YAKUSHIMA

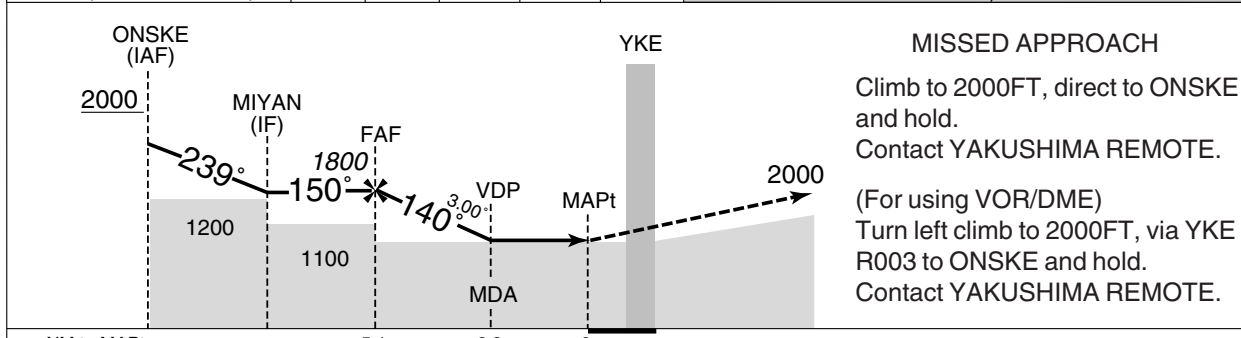
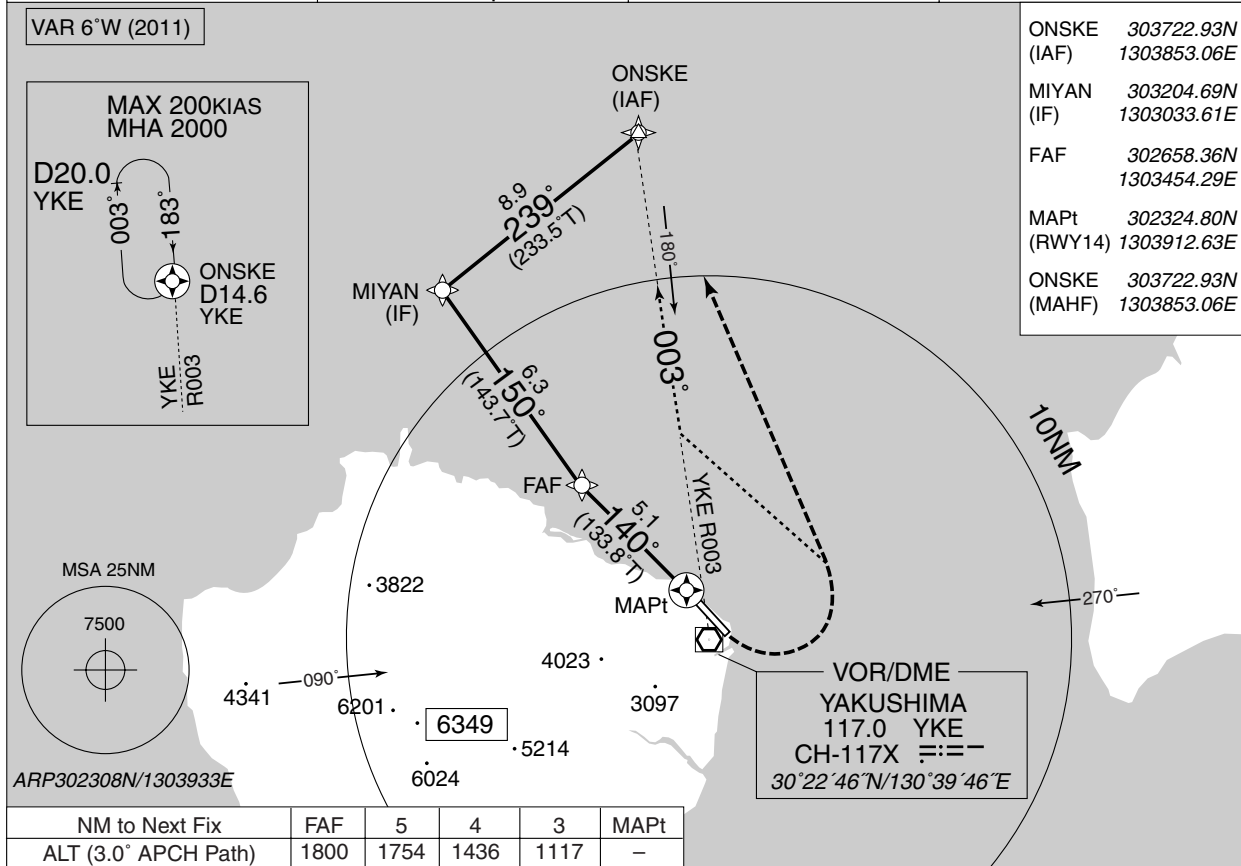
RNAV(GNSS) RWY 14

FUKUOKA CONTROL 133.85 - 132.6	1. DME/DME RNP0.3 not authorized. 2. RNP0.3 required. 3. GNSS required.	YAKUSHIMA REMOTE 118.65	NO RADAR
-----------------------------------	---	----------------------------	----------

VAR 6°W (2011)



ONSKE (IAF)	303722.93N 1303853.06E
MIYAN (IF)	303204.69N 1303033.61E
FAF	302658.36N 1303454.29E
MAPt (RWY14)	302324.80N 1303912.63E
ONSKE (MAHF)	303722.93N 1303853.06E

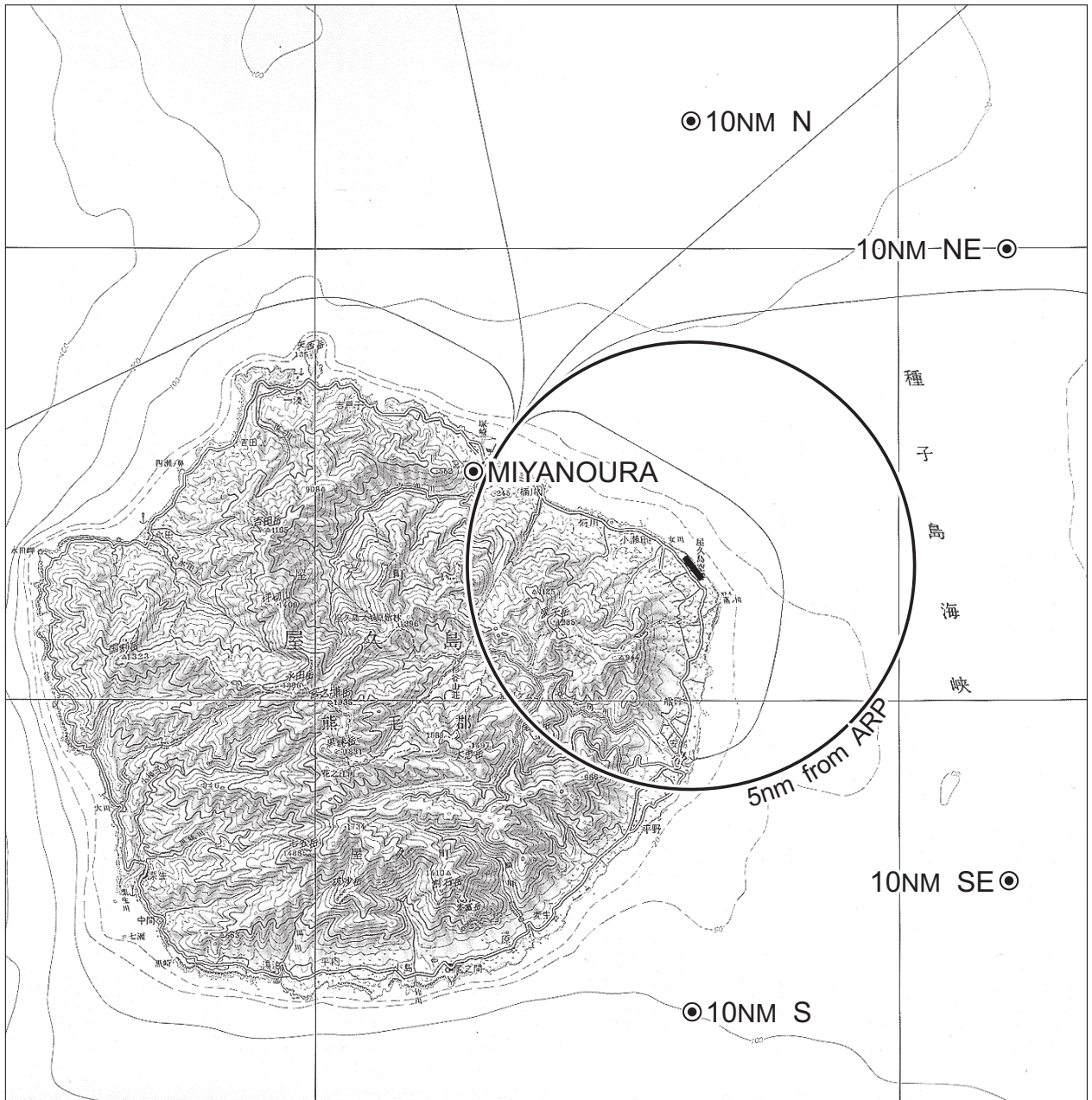


MINIMA		THR elev. 112	AD elev. 122	
CAT	LNAV		CIRCLING	
	MDA(H)	CMV	MDA(H) VIS	
A	1030 (918)	1500	1030 (908)	1600
B				2400
C		2000	3200	
D				

Circling to EAST side of RWY only.

RJFC / YAKUSHIMA

Visual REP



Note : A/G COM from Kagoshima FSC is blinded between 180° and 300° from Yakushima VOR/DME (YKE).

Call sign	BRG / DIST from ARP	Remarks
10NM N	000°/10NM	海上 Over the sea
10NM NE	045°/10NM	海上 Over the sea
10NM SE	135°/10NM	海上 Over the sea
10NM S	180°/10NM	海上 Over the sea
宮之浦 Miyanouura	300°/5.5NM	港 Harbor

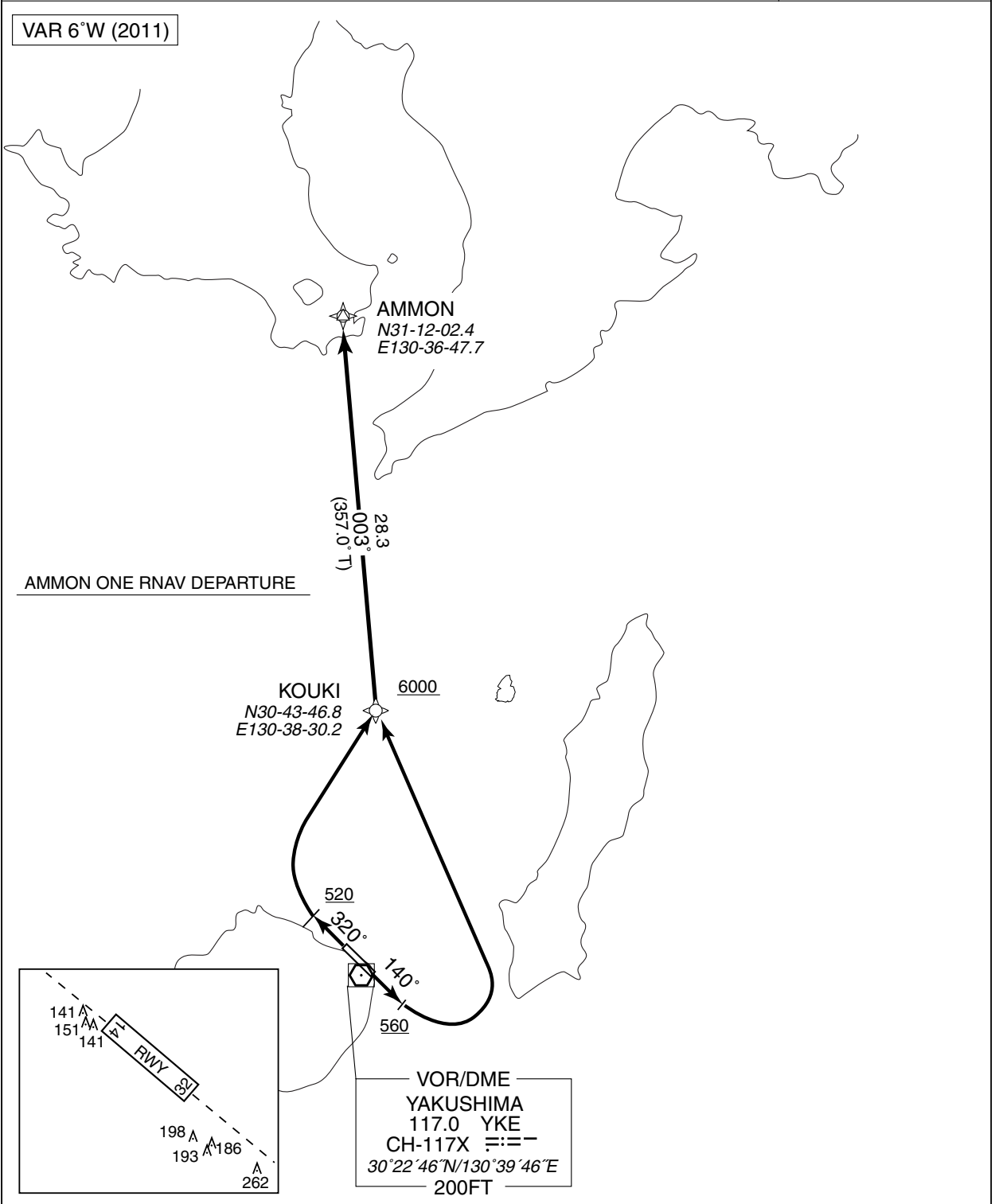
STANDARD DEPARTURE CHART -INSTRUMENT

RJFC / YAKUSHIMA

RNAV SID

AMMON ONE RNAV DEPARTURE

Basic RNP1



AMMON ONE RNAV DEPARTURE

- RWY14 : Climb on HDG 140° at or above 560FT, turn left direct to KOUKI at or above 6000FT, to AMMON.
- RWY32 : Climb on HDG 320° at or above 520FT, turn right direct to KOUKI at or above 6000FT, to AMMON.

STANDARD DEPARTURE CHART -INSTRUMENT

RJFC / YAKUSHIMA

RNAV SID

AMMON ONE RNAV DEPARTURE

RWY14

Rcmd. Path Terminator	Fix ID (Waypoint Name)	Fly Over	Distance (NM)	MAG Track (TRUE Track)	Turn Direction	Altitude (FT)	Speed Limit (KIAS)	Vertical Angle	Navigation Performance
VA	—	—	—	140° (133.9°)	—	+560	—	—	Basic RNP1
DF	█ KOUKI	—	—	—	L	+6000	—	—	Basic RNP1
TF	AMMON	—	28.3	003° (357.0°)	—	—	—	—	Basic RNP1

RWY32

Rcmd. Path Terminator	Fix ID (Waypoint Name)	Fly Over	Distance (NM)	MAG Track (TRUE Track)	Turn Direction	Altitude (FT)	Speed Limit (KIAS)	Vertical Angle	Navigation Performance
VA	—	—	—	320° (313.9°)	—	+520	—	—	Basic RNP1
DF	█ KOUKI	—	—	—	R	+6000	—	—	Basic RNP1
TF	AMMON	—	28.3	003° (357.0°)	—	—	—	—	Basic RNP1

STANDARD DEPARTURE CHART -INSTRUMENT

RJFC / YAKUSHIMA

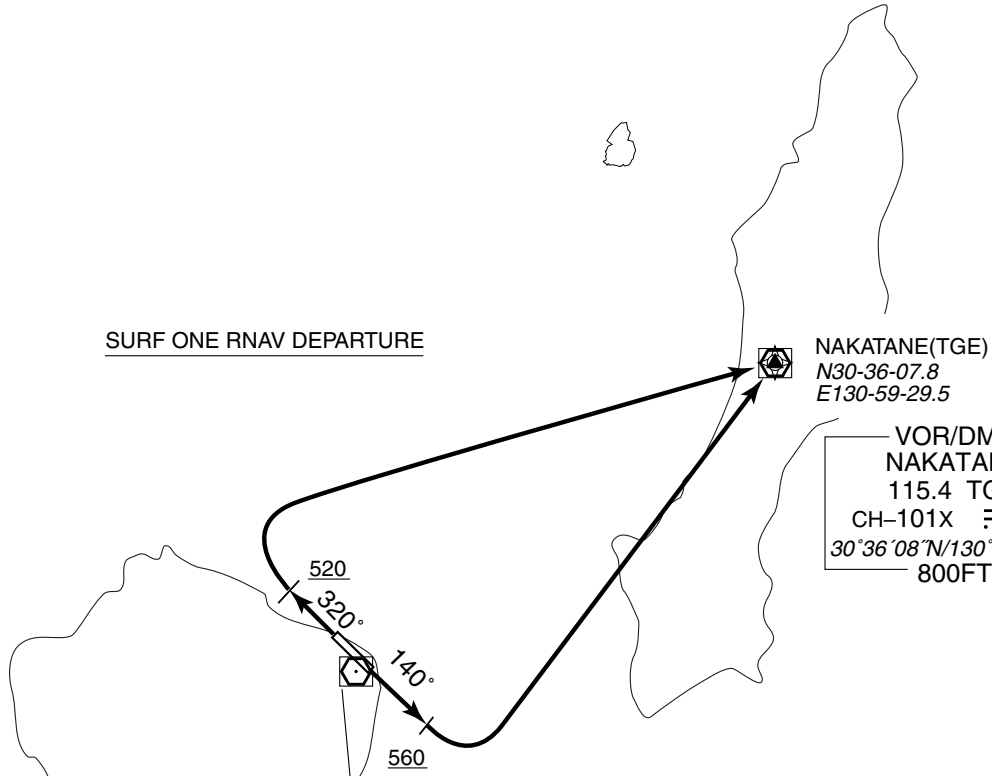
➔ RNAV SID

SURF ONE RNAV DEPARTURE

Basic RNP1

VAR 6°W (2011)

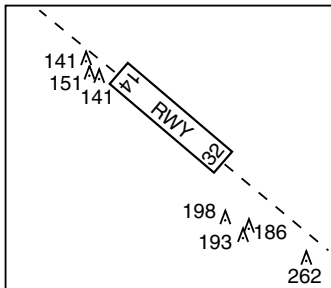
SURF ONE RNAV DEPARTURE



NAKATANE(TGE)
N30-36-07.8
E130-59-29.5

VOR/DME
NAKATANE
115.4 TGE
CH-101X ̄-̄-̄
30°36'08"N/130°59'30"E
800FT

VOR/DME
YAKUSHIMA
117.0 YKE
CH-117X ̄-̄-̄
30°22'46"N/130°39'46"E
200FT



SURF ONE RNAV DEPARTURE

RWY14 : Climb on HDG 140° at or above 560FT, turn left direct to NAKATANE(TGE).
 RWY32 : Climb on HDG 320° at or above 520FT, turn right direct to NAKATANE(TGE).

STANDARD DEPARTURE CHART -INSTRUMENT

RJFC / YAKUSHIMA

➔ RNAV SID

SURF ONE RNAV DEPARTURE

RWY14

Rcmd. Path Terminator	Fix ID (Waypoint Name)	Fly Over	Distance (NM)	MAG Track (TRUE Track)	Turn Direction	Altitude (FT)	Speed Limit (KIAS)	Vertical Angle	Navigation Performance
VA	—	—	—	140° (133.9°)	—	+560	—	—	Basic RNP1
DF	NAKATANE (TGE)	—	—	—	L	—	—	—	Basic RNP1

RWY32

Rcmd. Path Terminator	Fix ID (Waypoint Name)	Fly Over	Distance (NM)	MAG Track (TRUE Track)	Turn Direction	Altitude (FT)	Speed Limit (KIAS)	Vertical Angle	Navigation Performance
VA	—	—	—	320° (313.9°)	—	+520	—	—	Basic RNP1
DF	NAKATANE (TGE)	—	—	—	R	—	—	—	Basic RNP1

滑走路32側進入角指示灯の使用制限は付図の通り。

The unusable area of PAPI for runway 32 is shown in the chart below.

