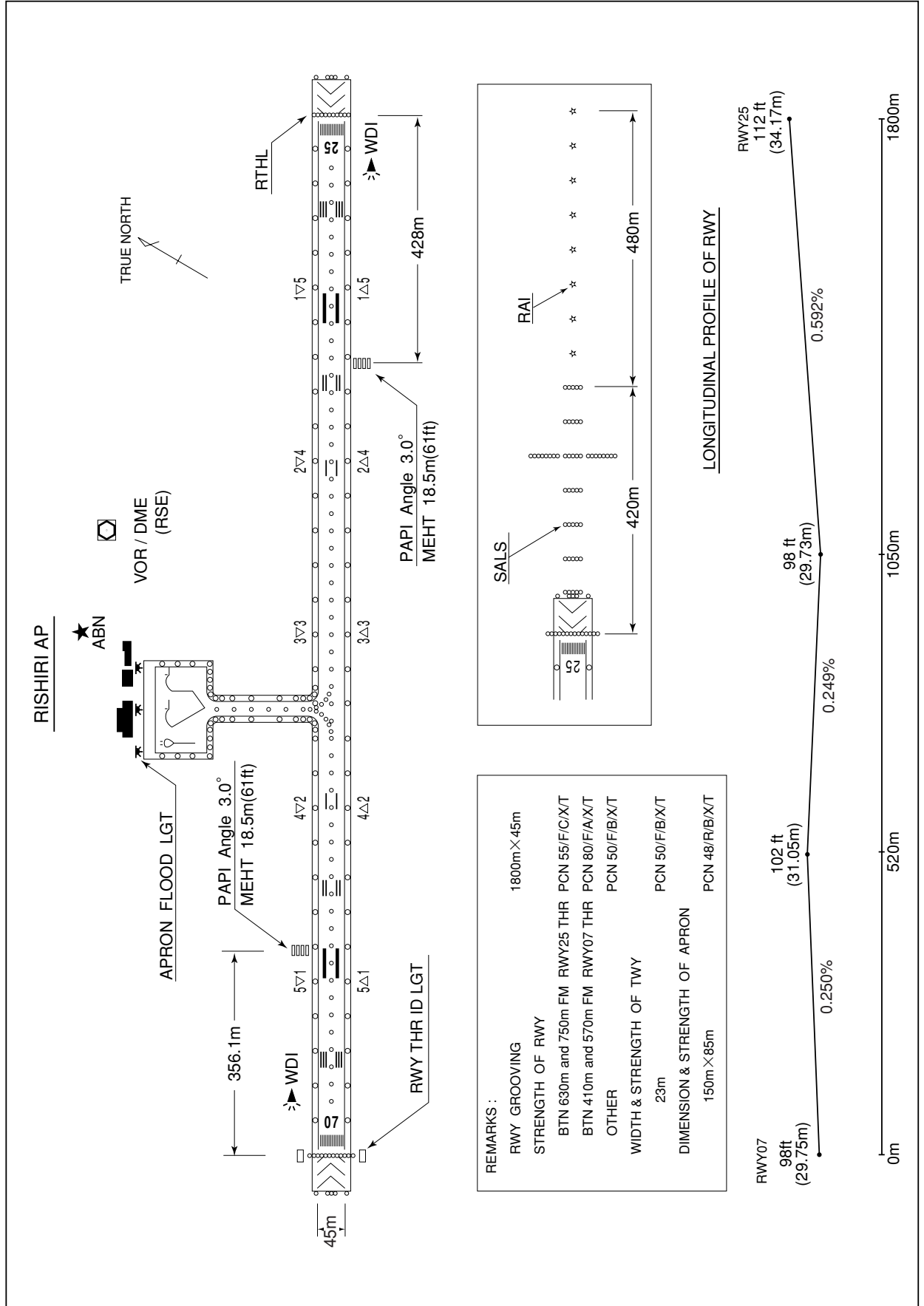


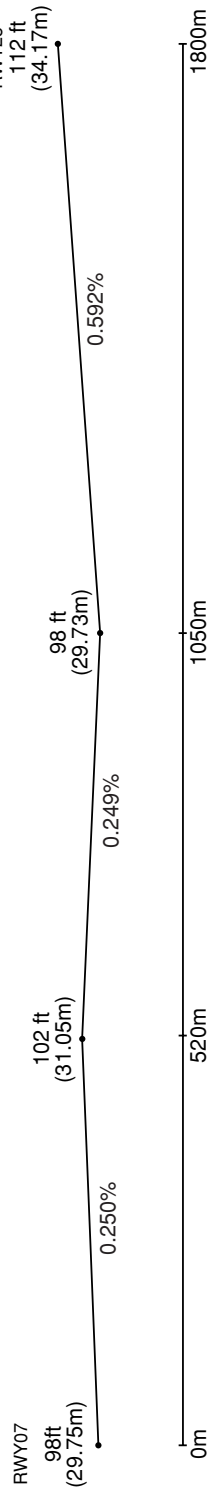
RJER / RISHIRI

AD CHART



REMARKS :

RWY GROOVING	1800m×45m
STRENGTH OF RWY	BTN 630m and 750m FM RWY25 THR PCN 55/F/C/X/T
	BTN 410m and 570m FM RWY07 THR PCN 80/F/A/X/T
OTHER	PCN 50/F/B/X/T
WIDTH & STRENGTH OF TWY	PCN 50/F/B/X/T
	23m
DIMENSION & STRENGTH OF APRON	PCN 48/R/B/X/T
	150m×85m



STANDARD DEPARTURE CHART-INSTRUMENT

RJER / RISHIRI

SID

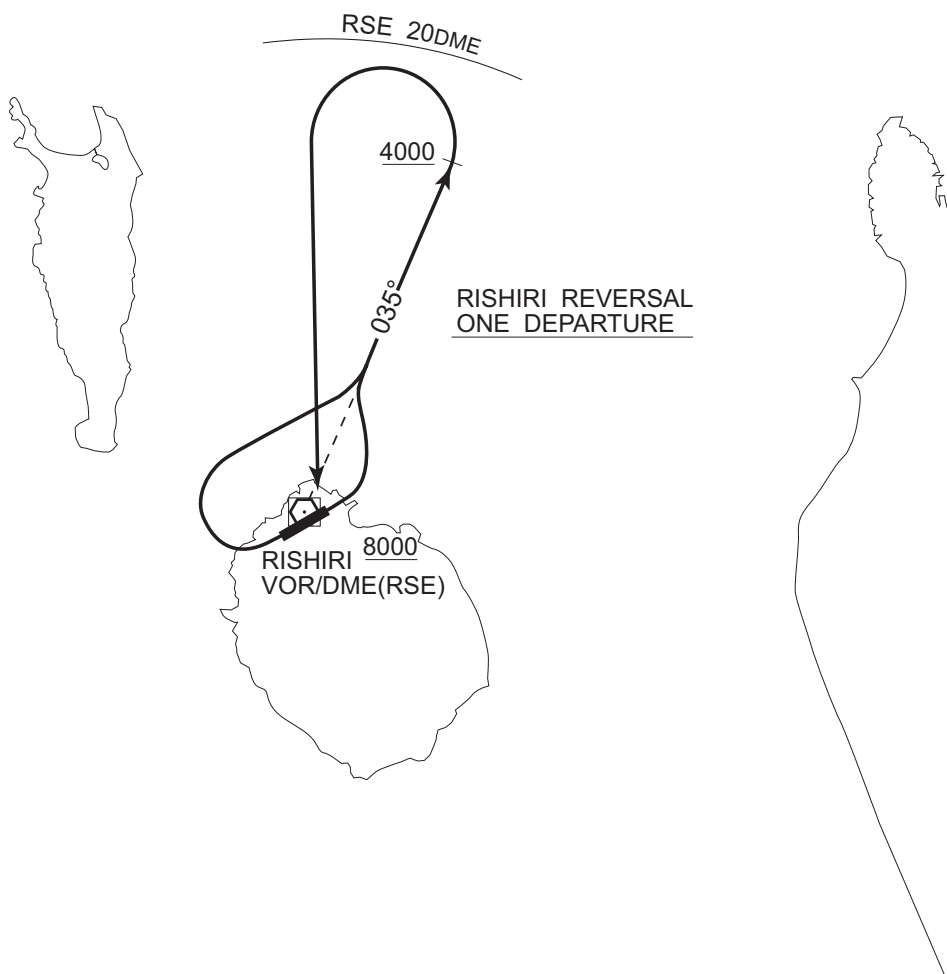
RISHIRI REVERSAL ONE DEPARTURE

RWY07 : Turn left,....

RWY25 : Turn right,....

.... Climb via RSE R-035 to 4,000ft or above, turn left within RSE 20DME, proceed to RSE VOR/DME.

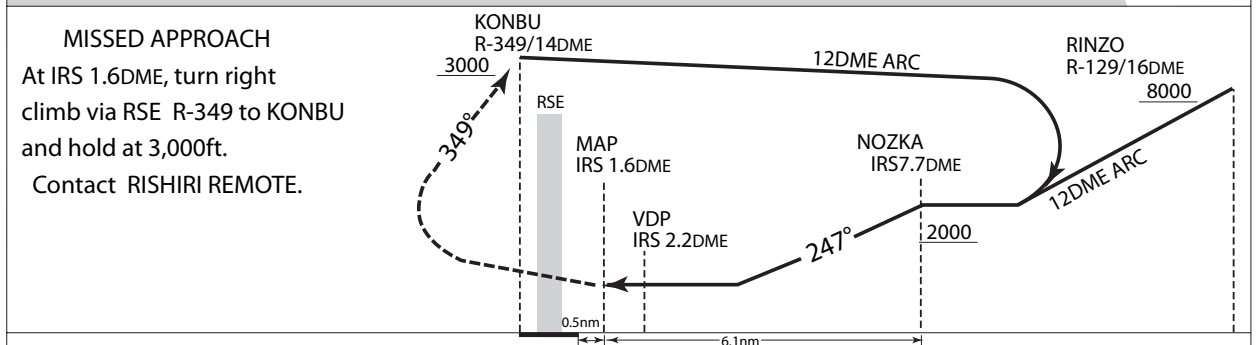
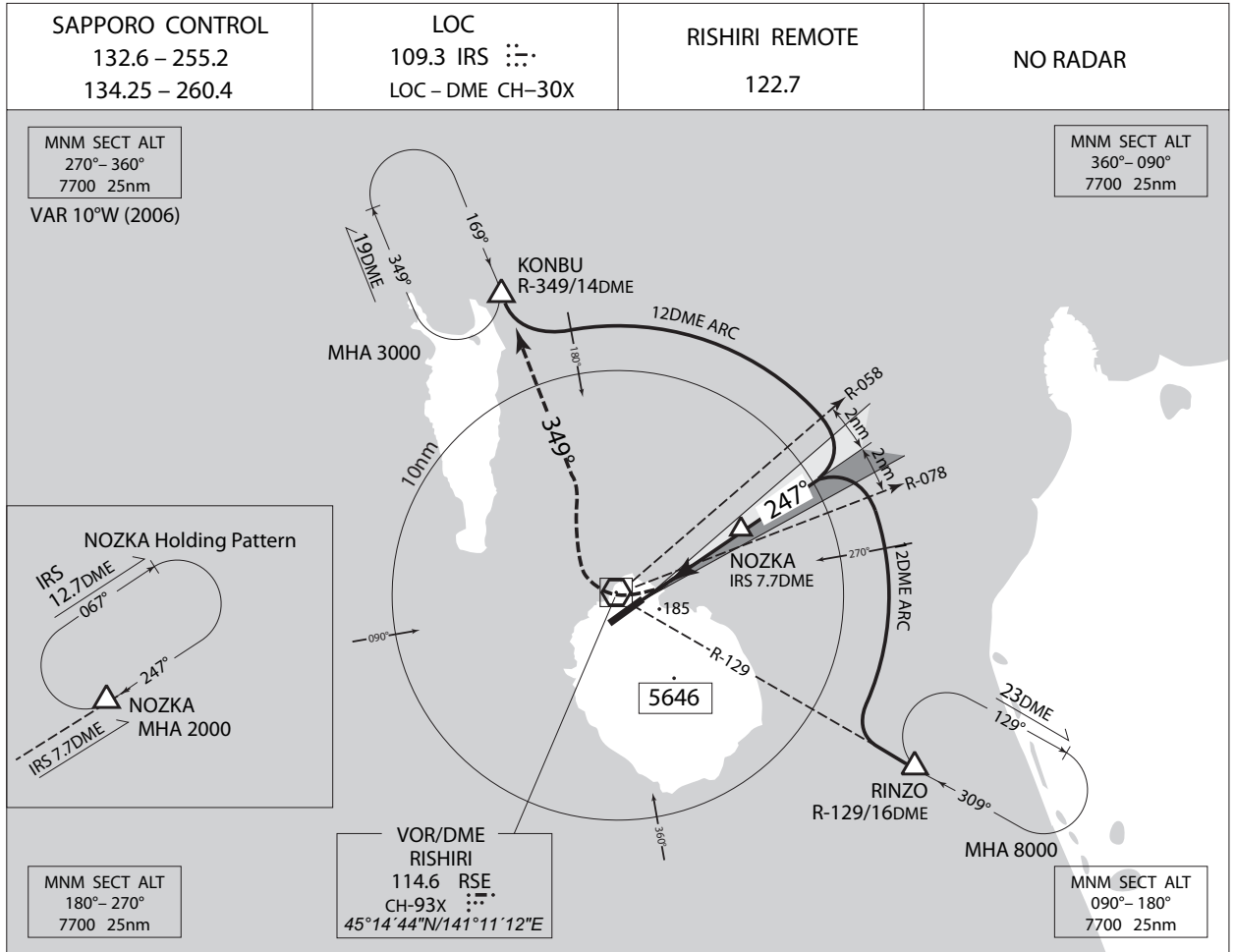
Cross RSE VOR/DME at or above 8,000ft.



INSTRUMENT APPROACH CHART

RJER / RISHIRI

VOR/DME/LOC RWY25



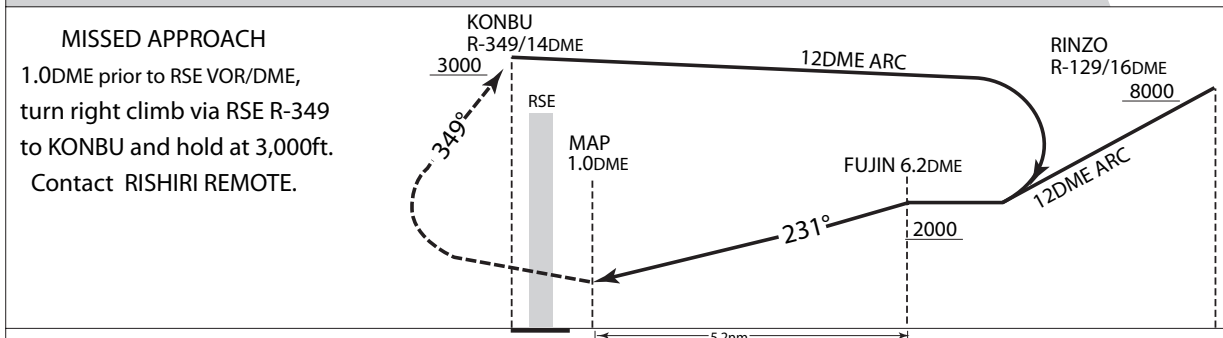
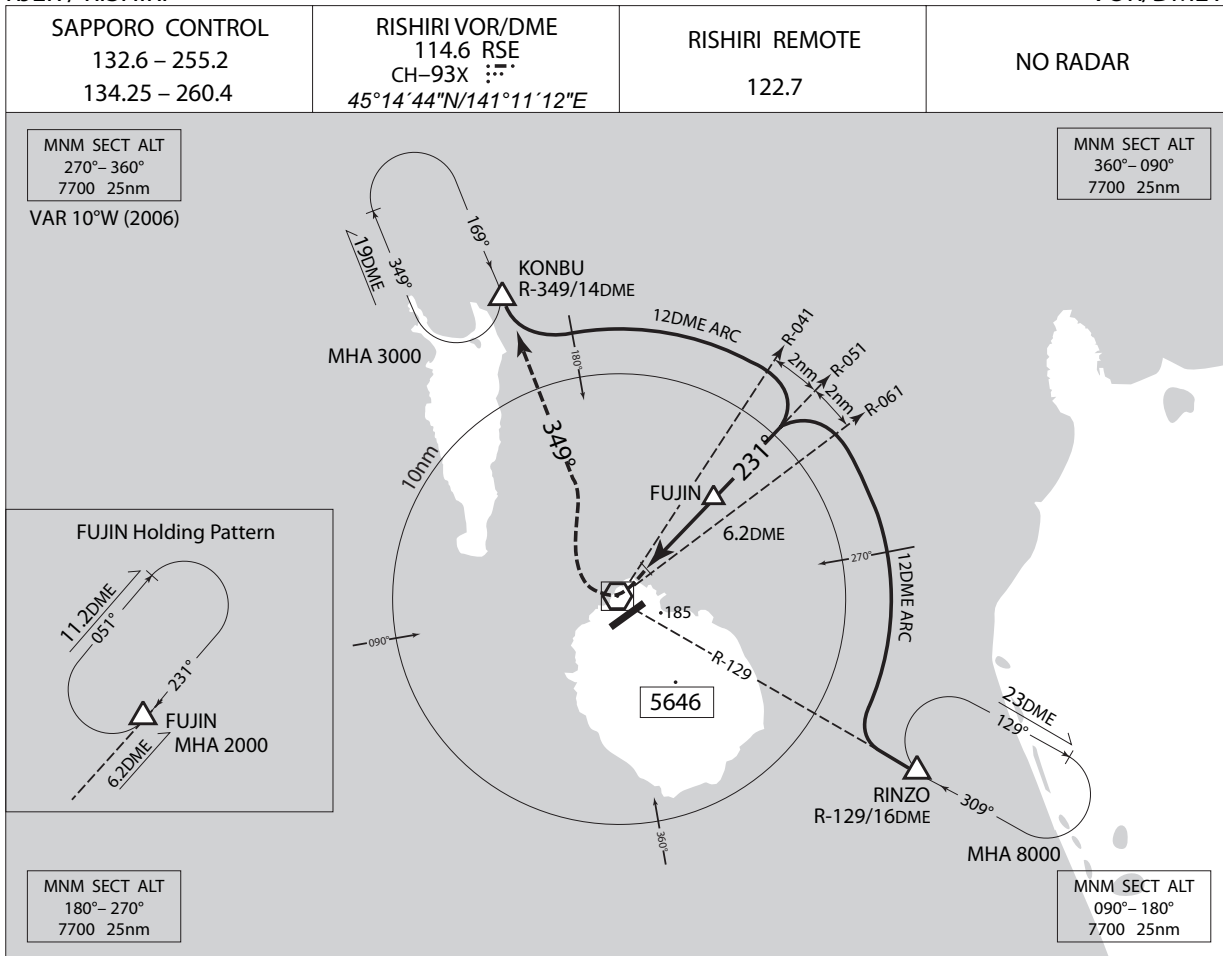
MINIMA	THR elev. 112	AD elev. 99		
CAT			CIRCLING	
	MDA(H)	CMV	MDA(H)	VIS
	A	900	640 (541)	1600
	B	500 (401)	1000	2400
	C	-	-	-
D	-	-	-	-

Circling to North side of RWY only.

INSTRUMENT APPROACH CHART

RJER / RISHIRI

VOR/DME A



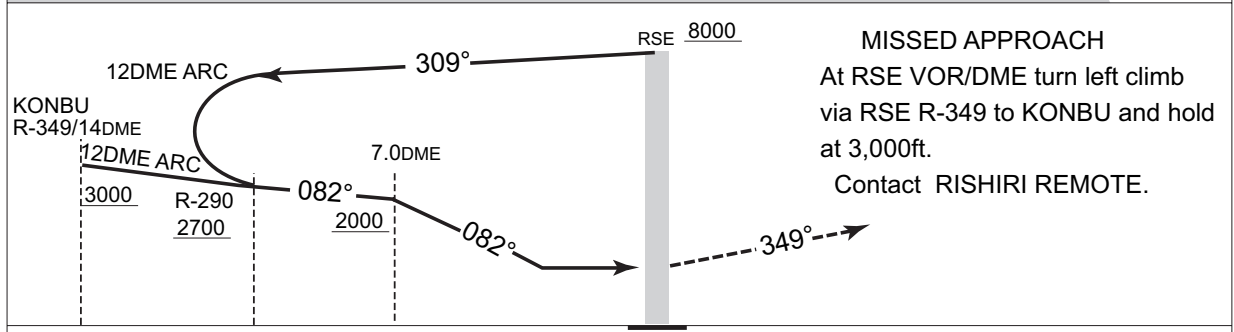
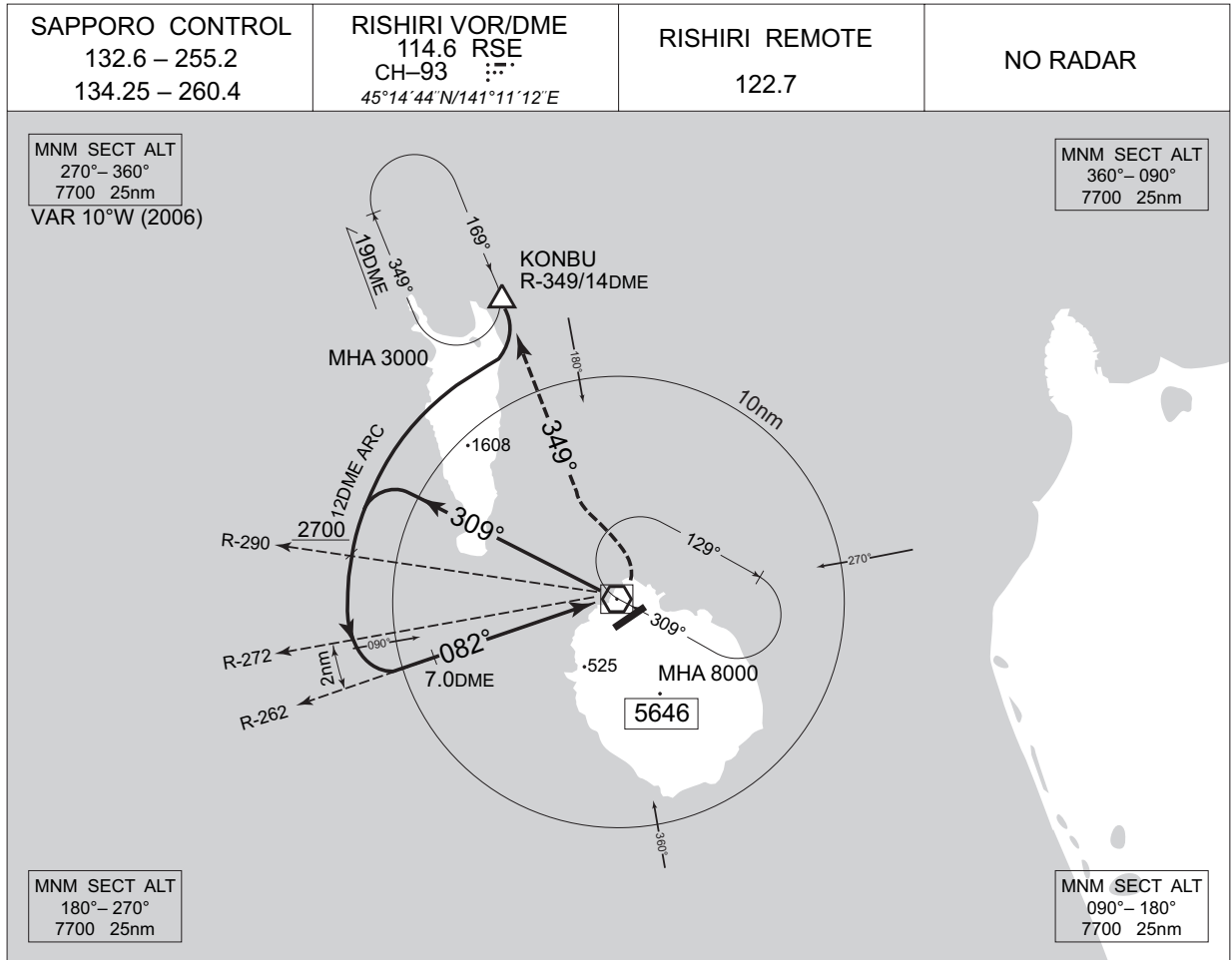
MINIMA		AD elev. 99	
CAT	CIRCLING		
	MDA(H)	VIS	
A	720 (621)	1600	
B		2400	
C		-	
D	-	-	

Circling to North side of RWY only.

INSTRUMENT APPROACH CHART

RJER / RISHIRI

VOR/DME B



MINIMA		AD elev. 99
CAT	CIRCLING	
	MDA(H)	VIS
A	840 (741)	1600
B		2400
C		-
D	-	-

Circling to North side of RWY only.

INSTRUMENT APPROACH CHART

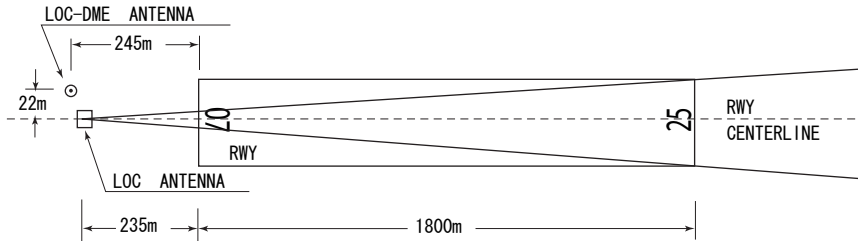
RJER / RISHIRI

Visual REP



Call sign	BRG / DIST from ARP	Remarks
沓形 Kutsugata	226°/4.0NM	沓形岬 Cape
姫沼 Himenuma	127°/2.9NM	姫沼 Pond

Note : In the SE through SW of the airport, A/G COM from Rishiri Remote is blinded by Mt. Rishiri (5,646ft).



REMARKS :

1.	LOC beam BRG (MAG)	247°
2.	ELEV of LOC-DME	33.31m(109ft)