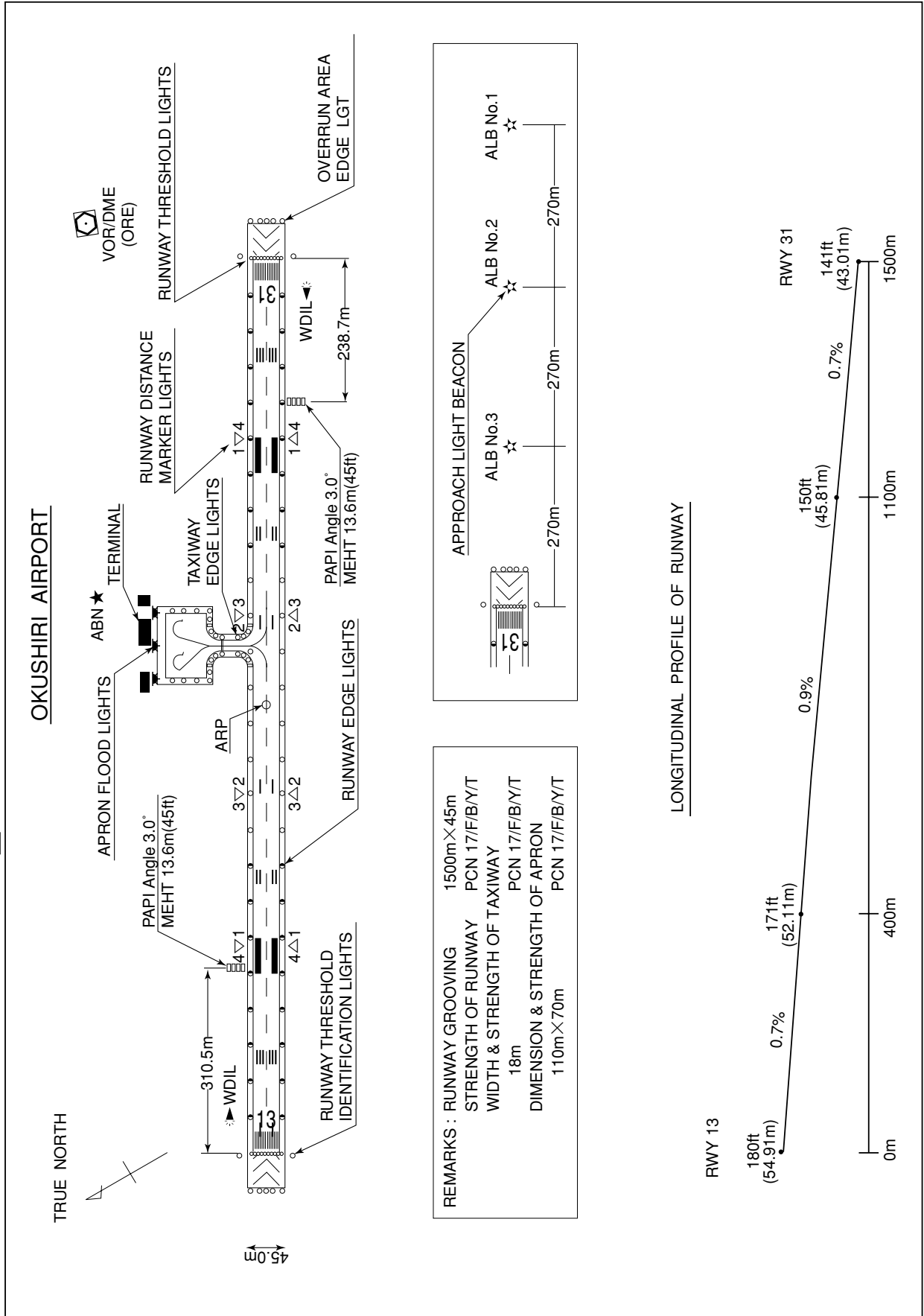


RJEO / OKUSHIRI

AD CHART



STANDARD DEPARTURE CHART - INSTRUMENT

RJEO / OKUSHIRI

SID

ESASI TWO DEPARTURE

RWY13 : Turn left,....

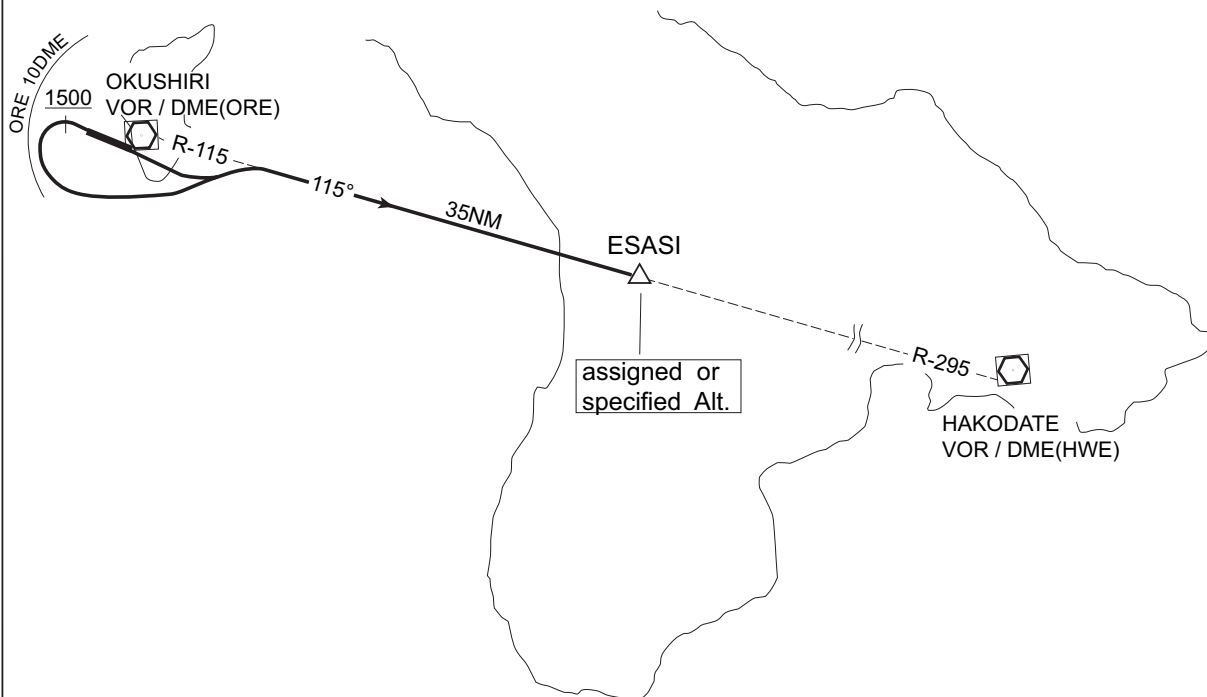
RWY31 : Climb via RWY HDG until 1,500FT or above, complete left turn within ORE 10DME,....

....climb via ORE R-115 to ESASI.

Cross ESASI at assigned or specified altitude.

Note : When take off from RWY13, following climb gradient should be maintained until 700FT.

|                 |     |     |     |     |     |      |
|-----------------|-----|-----|-----|-----|-----|------|
| Speed (Knots)   | 60  | 90  | 120 | 150 | 180 | 210  |
| Rate (Feet/Min) | 300 | 450 | 600 | 750 | 900 | 1050 |

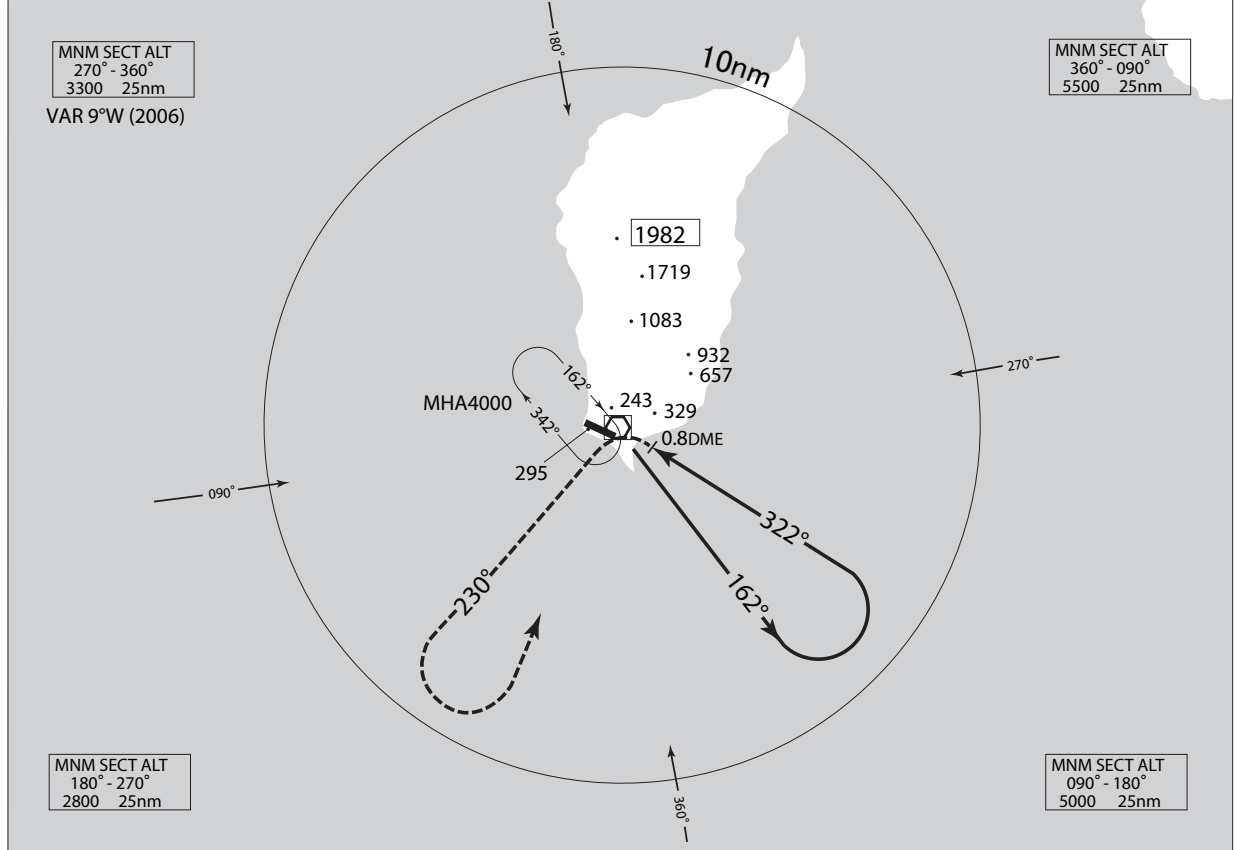


INSTRUMENT APPROACH CHART

RJEO / OKUSHIRI

VOR/DME RWY31

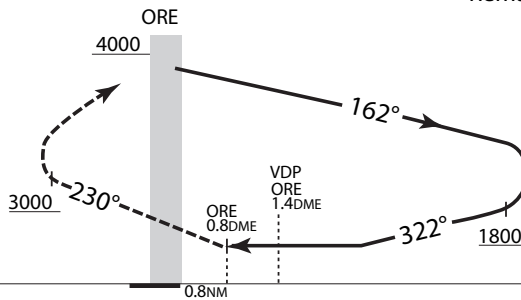
|  |  |                          |          |
|--|--|--------------------------|----------|
| SAPPORO CONTROL<br>119.3 – 276.5<br>134.25 – 260.4 | OKUSHIRI VOR/DME<br>109.85 ORE<br>CH-35Y<br>42°04'13"N / 139°26'36"E | OKUSHIRI REMOTE<br>122.7 | NO RADAR |
|--|--|--------------------------|----------|



MISSED APPROACH

At 0.8DME prior to ORE VOR/DME, turn left, climb to 3000' or above via ORE R-230, then turn left proceed to ORE VOR/DME within ORE 10DME and hold at 4000'.  
Contact OKUSHIRI REMOTE.

Remain within ORE 10DME



|        |           |               |              |      |
|--------|-----------|---------------|--------------|------|
| MINIMA |           | THR elev. 141 | AD elev. 161 |      |
| CAT    |           |               | CIRCLING     |      |
|        | MDA(H)    | CMV           | MDA(H)       | VIS  |
| A      | 600 (459) | 1500          | 600 (439)    | 1600 |
| B      |           |               | 620 (459)    |      |
| C      | -         | -             | -            | -    |
| D      | -         | -             | -            | -    |

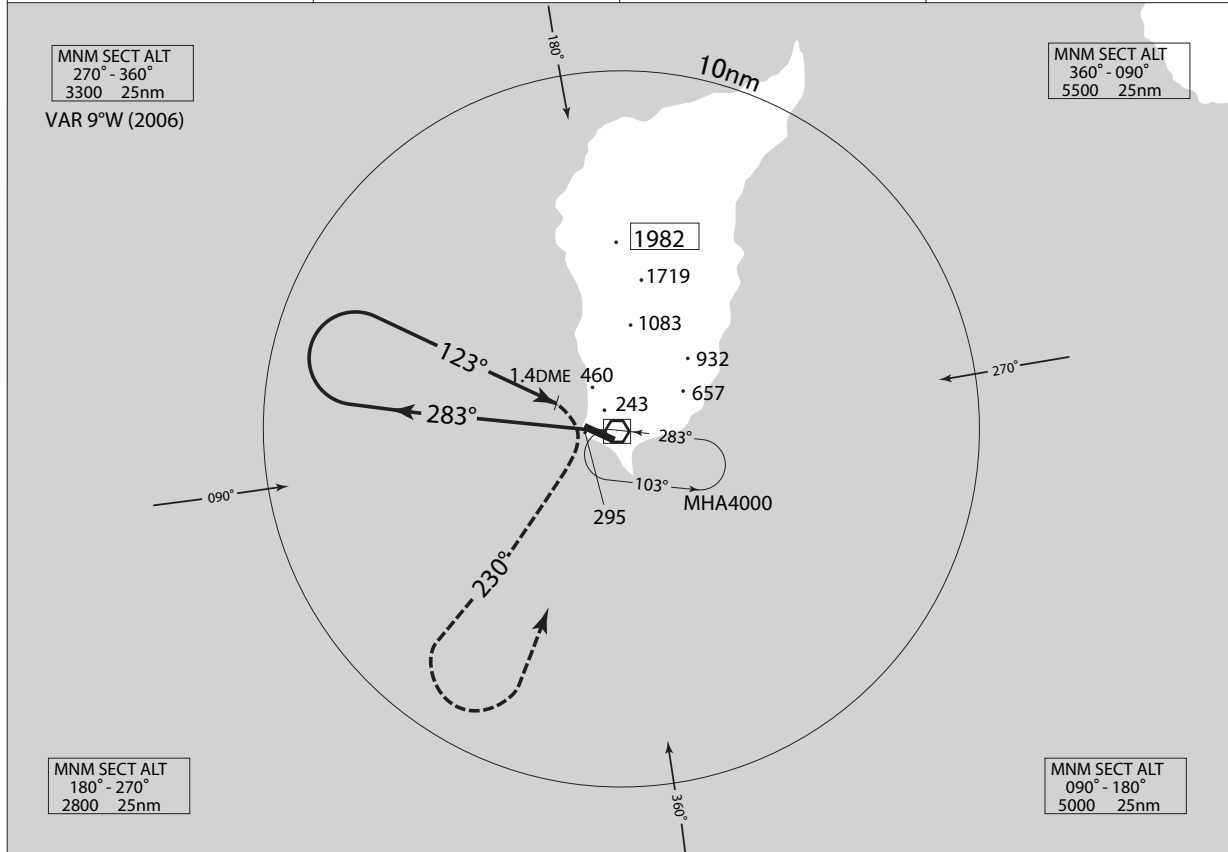
Circling to South side of RWY only.

INSTRUMENT APPROACH CHART

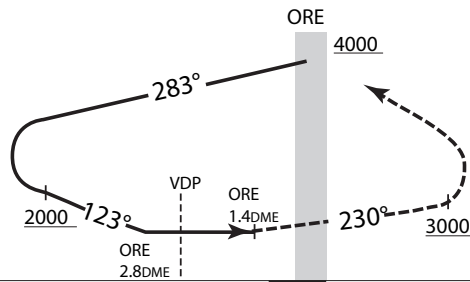
RJEO / OKUSHIRI

VOR / DME RWY13

|  |  |                          |          |
|--|--|--------------------------|----------|
| SAPPORO CONTROL<br>119.3 – 276.5<br>134.25 – 260.4 | OKUSHIRI VOR/DME<br>109.85 ORE<br>CH-35Y<br>42°04'13"N / 139°26'36"E | OKUSHIRI REMOTE<br>122.7 | NO RADAR |
|--|--|--------------------------|----------|



Remain within ORE 10DME



MISSED APPROACH

At 1.4DME prior to ORE VOR/DME, turn right, climb to 3000' or above via ORE R-230, then turn left proceed to ORE VOR/DME within ORE10DME and hold at 4000'. Contact OKUSHIRI REMOTE.

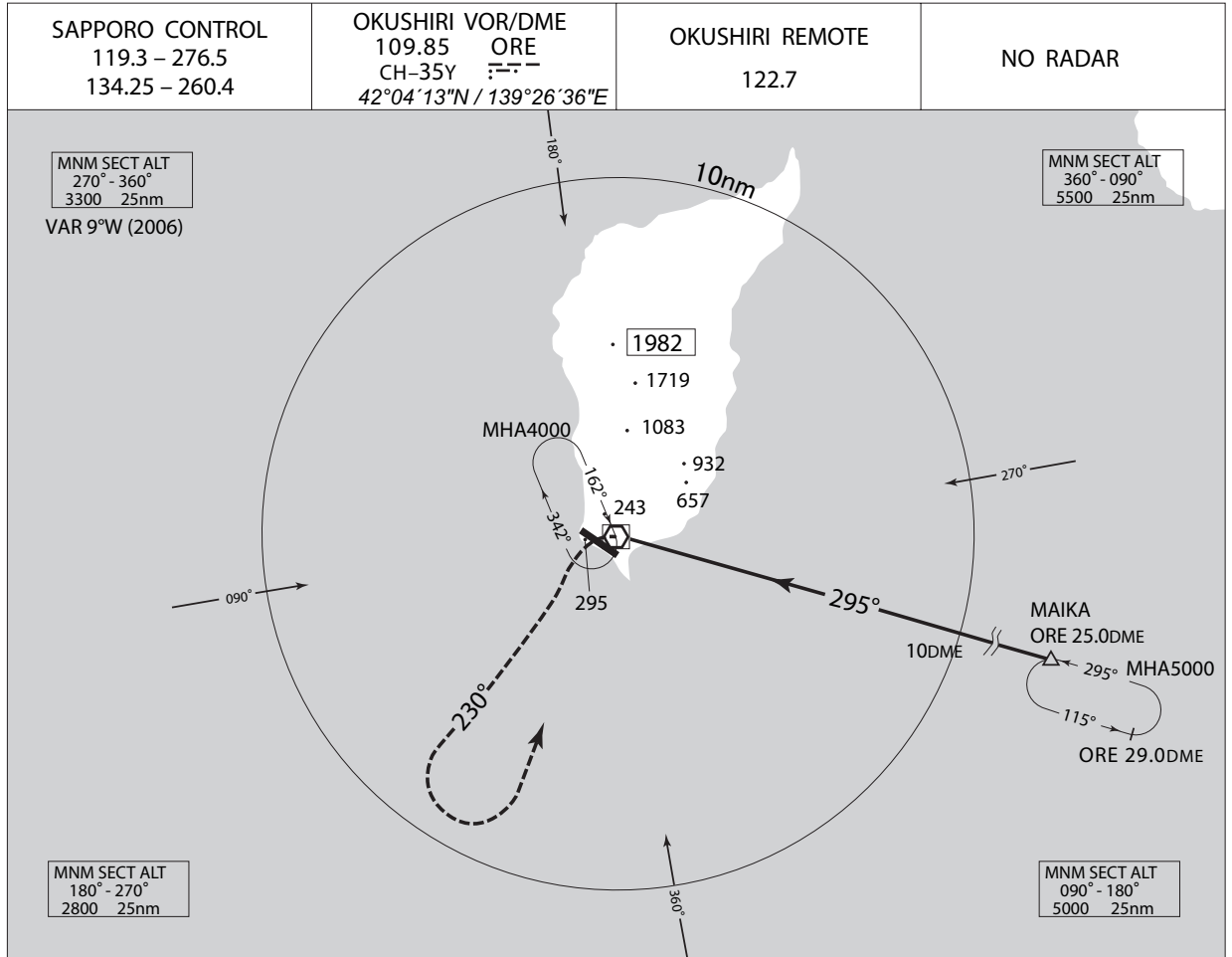
|        |               |              |           |      |
|--------|---------------|--------------|-----------|------|
| MINIMA | THR elev. 180 | AD elev. 161 |           |      |
| CAT    |               |              | CIRCLING  |      |
|        | MDA(H)        | CMV          | MDA(H)    | VIS  |
| A      | 760 (599)     | 1500         | 760 (599) | 1600 |
| B      |               |              |           |      |
| C      | -             | -            | -         | -    |
| D      | -             | -            | -         | -    |

Circling to South side of RWY only.

INSTRUMENT APPROACH CHART

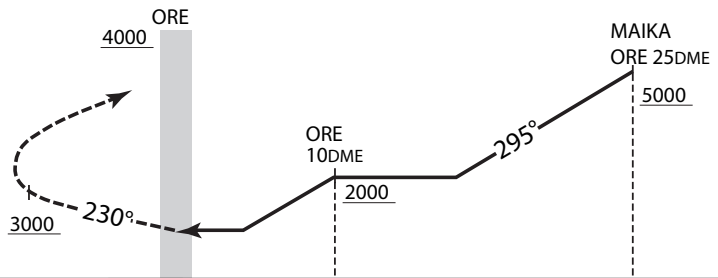
RJEO / OKUSHIRI

VOR / DME A



MISSED APPROACH

At ORE VOR/DME, turn left, climb to 3000' or above via ORE R-230, then turn left proceed to ORE VOR/DME within ORE 10DME and hold at 4000'.  
Contact OKUSHIRI REMOTE.

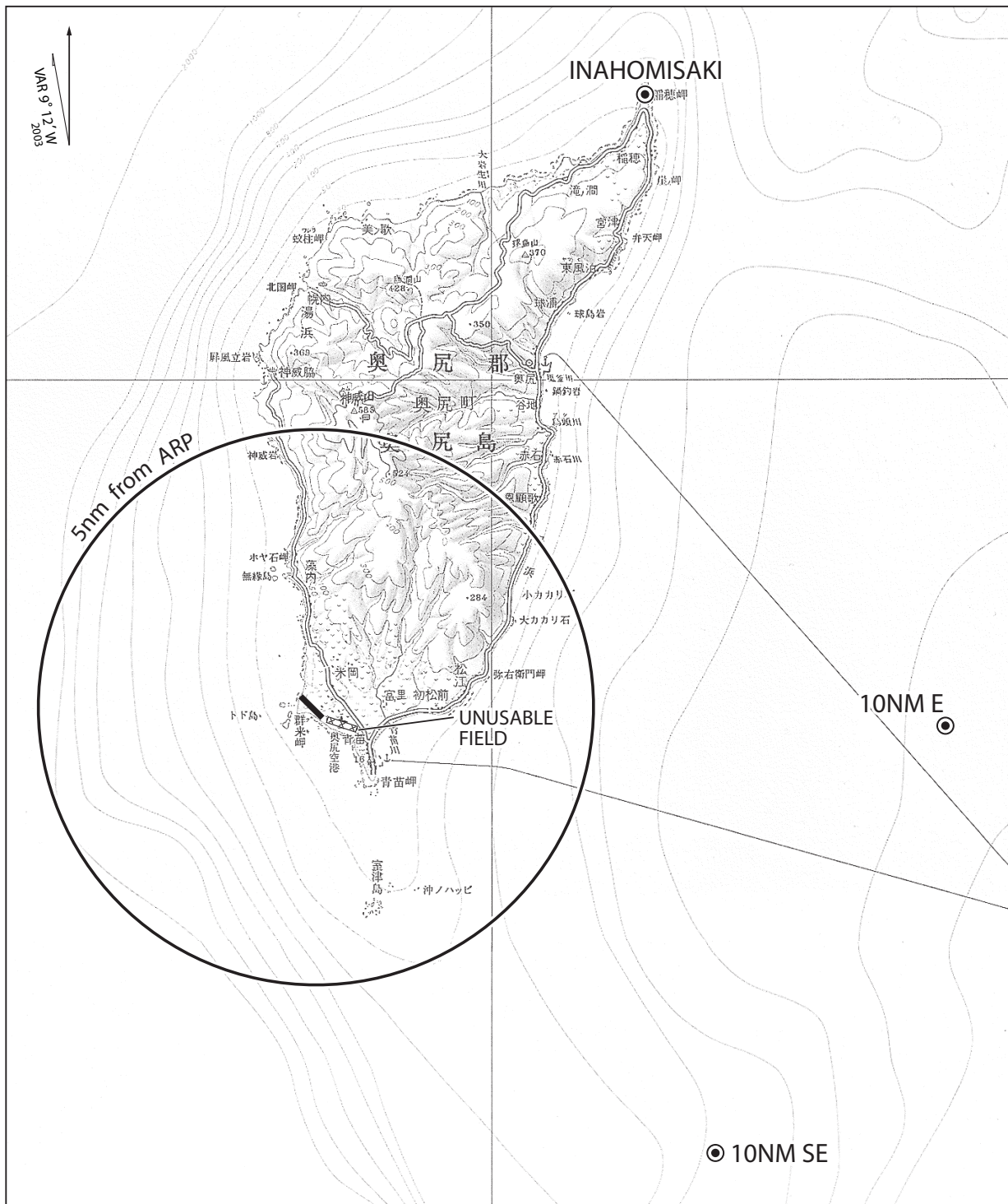


|        |           |              |
|--------|-----------|--------------|
| MINIMA |           | AD elev. 161 |
| CAT    | CIRCLING  |              |
|        | MDA(H)    | VIS          |
| A      | 960 (799) | 1600         |
| B      |           |              |
| C      | -         | -            |
| D      | -         | -            |

Circling to South side of RWY only.

RJEO / OKUSHIRI

Visual REP



| Call sign          | BRG / DIST from ARP | Remarks            |
|--------------------|---------------------|--------------------|
| 稲穂岬<br>INAHOMISAKI | 034°/11.5NM         | 灯台<br>Lighthouse   |
| 10NM E             | 090°/10.0NM         | 海上<br>Over the sea |
| 10NM SE            | 135°/10.0NM         | 海上<br>Over the sea |