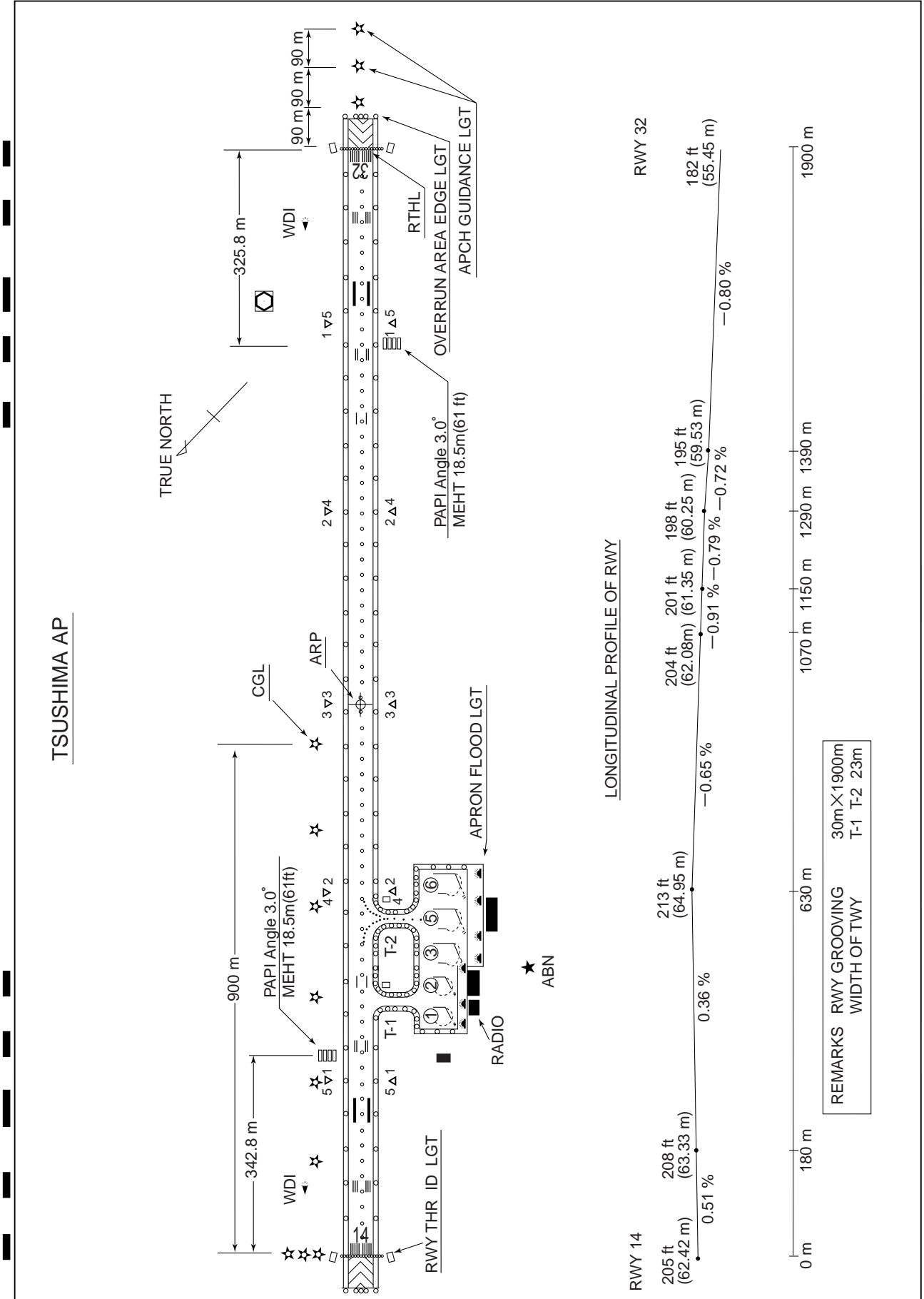


RJDT / TSUSHIMA

AD CHART



STANDARD DEPARTURE CHART - INSTRUMENT

RJDT / TSUSHIMA

SID

IKISHIMA FIVE DEPARTURE

RWY 14 : Climb RWY HDG to 900ft,...

RWY 32 : Climb on HDG 338DEG to 900ft, turn right HDG 198DEG, ...climb via VCE R-153 to IKE VOR/DME.

Cross VCE R-153/20DME at or above 4,000ft.

Note. RWY 32 : 3.9% climb gradient required up to 900ft.

Obstacle ALT 525ft located at 1.94NM 306° from end of RWY32.

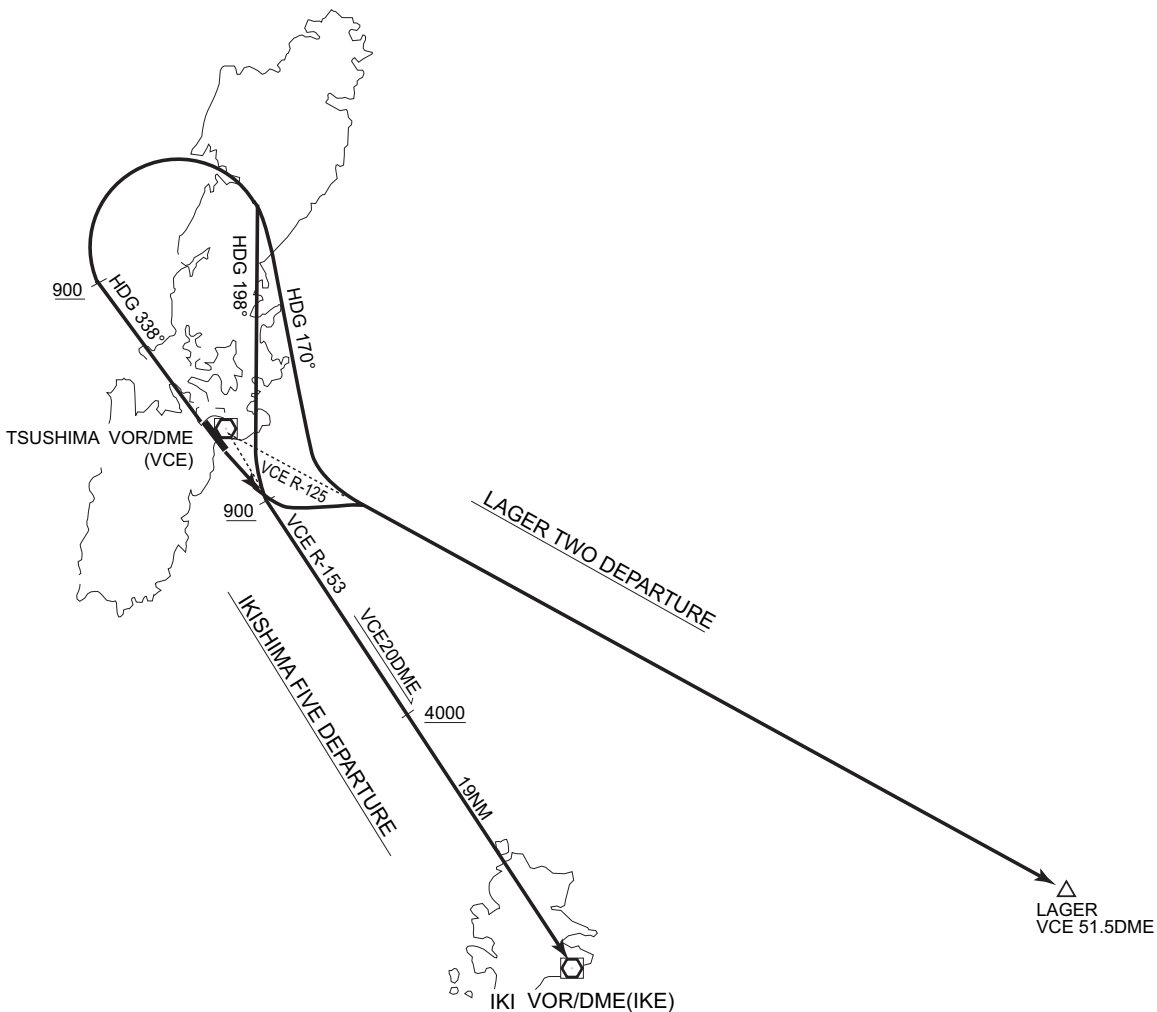
LAGER TWO DEPARTURE

RWY 14 : Climb RWY HDG to 900ft, turn left,...

RWY 32 : Climb on HDG 338DEG to 900ft, turn right HDG 170DEG, ...climb via VCE R-125 to LAGER.

Note. RWY 32 : 3.9% climb gradient required up to 900ft.

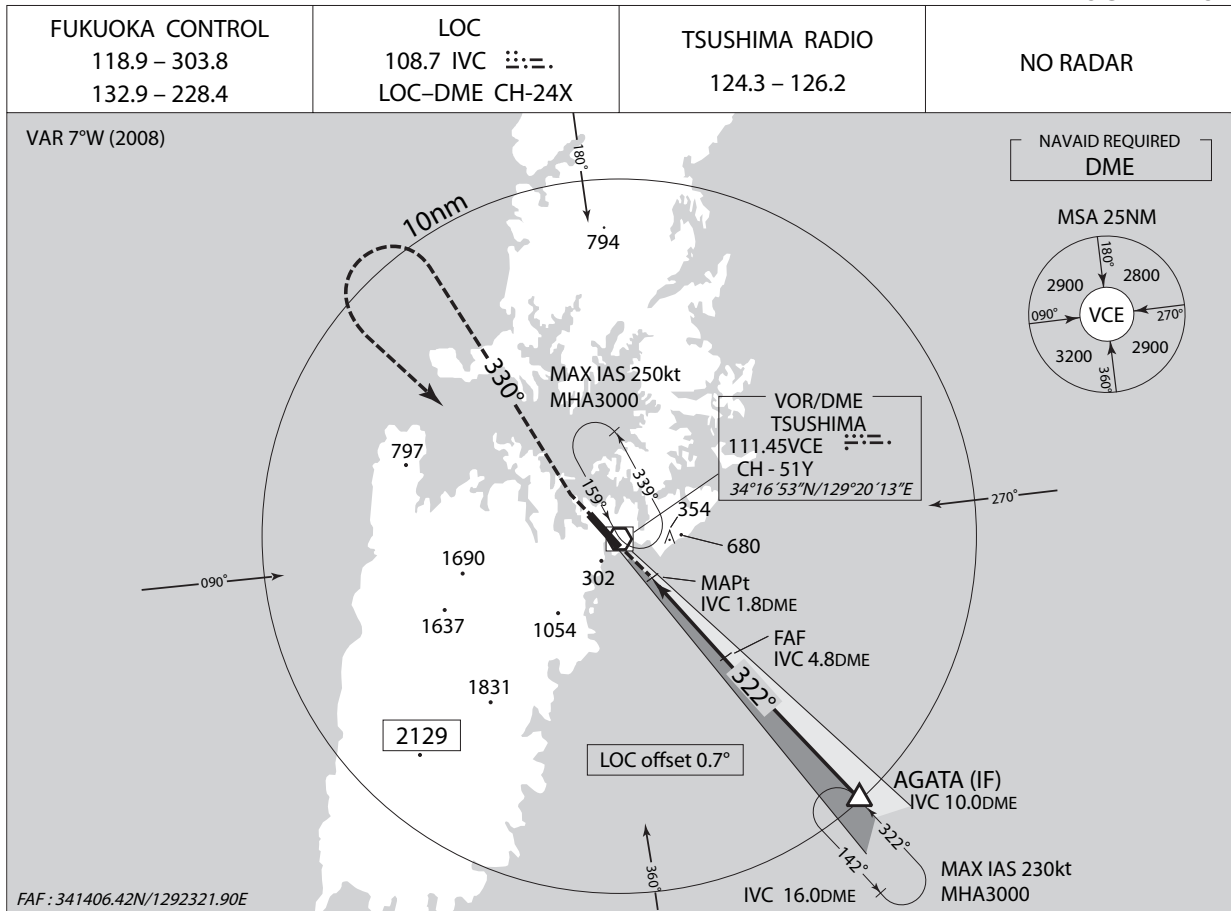
Obstacle ALT 525ft located at 1.94NM 306° from end of RWY32.



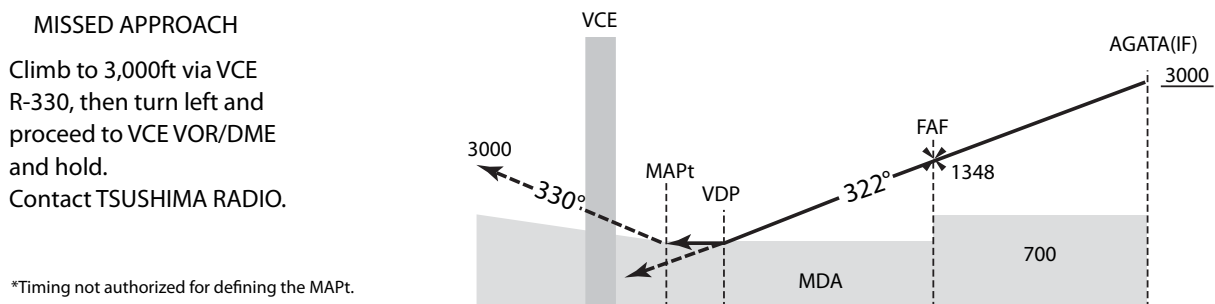
INSTRUMENT APPROACH CHART

RJDT / TSUSHIMA

LOC Z RWY32



NM to IVC	2	3	4	FAF
ALT (3.0° APCH Path)	507	825	1143	1348



NM to RWY32	0	0.7	CAT A,B,C: 0.7 CAT D: 0.8	3.7	8.9
DME to IVC	0	1.8	CAT A,B,C: 1.8 CAT D: 1.9	4.8	10.0

MINIMA		THR elev. 182	AD elev. 207	
CAT			CIRCLING	
	MDA(H)	CMV	MDA(H)	VIS
A	440 (258)	1500	690 (483)	1600
B			760 (553)	
C	450 (268)	1600	1090 (883)	2400
D	470 (288)	1800		3200

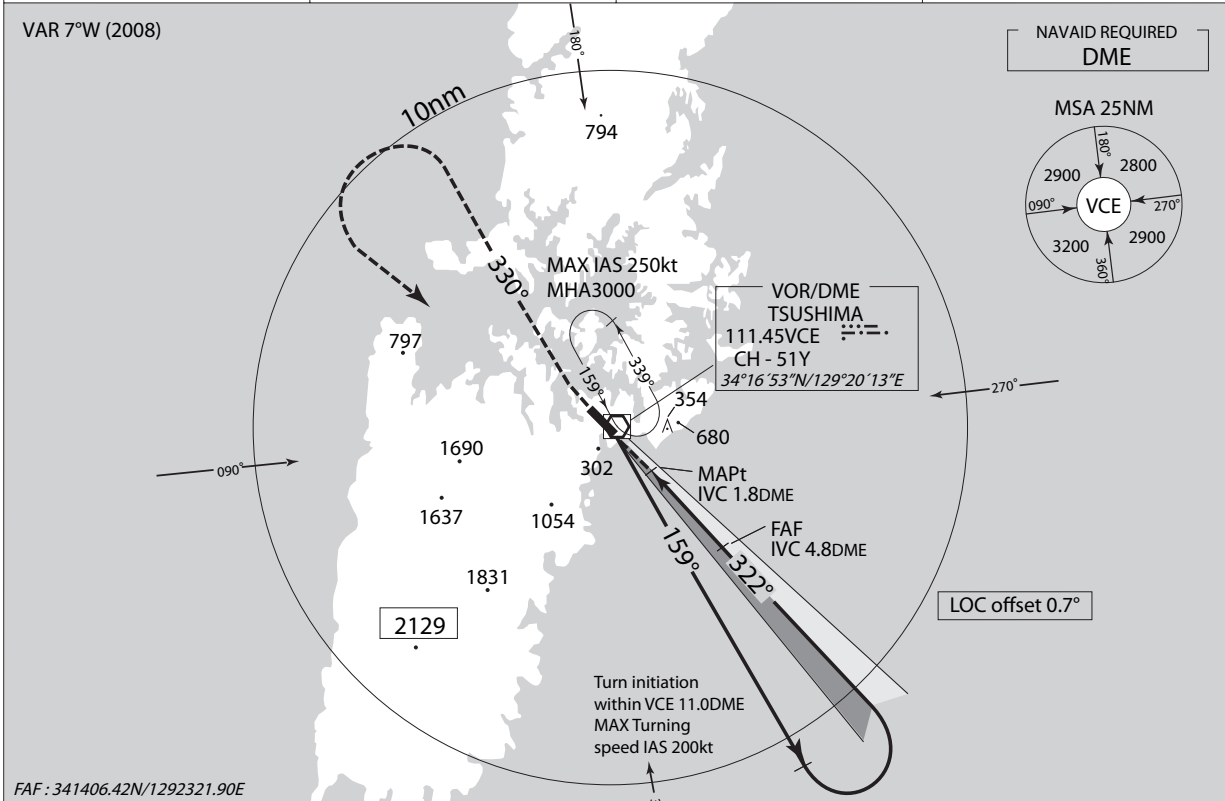
Circling to East side of RWY only.

INSTRUMENT APPROACH CHART

RJDT / TSUSHIMA

LOC Y RWY32

FUKUOKA CONTROL 118.9 – 303.8 132.9 – 228.4	LOC 108.7 IVC LOC-DME CH-24X	TSUSHIMA RADIO 124.3 – 126.2	NO RADAR
---	------------------------------------	---------------------------------	----------

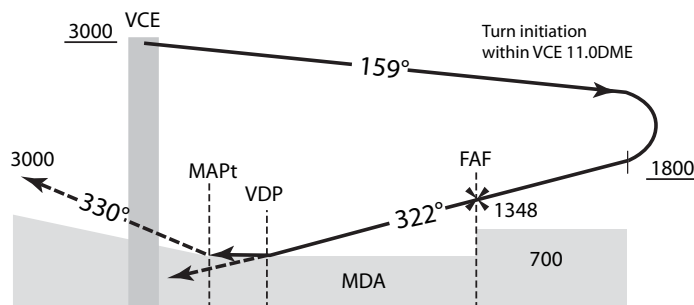


FAF : 341406.42N/1292321.90E

NM to IVC	2	3	4	FAF
ALT (3.0° APCH Path)	507	825	1143	1348

MISSED APPROACH

Climb to 3,000ft via VCE R-330, then turn left and proceed to VCE VOR/DME and hold.
Contact TSUSHIMA RADIO.



*Timing not authorized for defining the MAPt.

NM to RWY32	0	0.7	CAT A,B,C:0.7 CAT D:0.8	3.7
DME to IVC	0	1.8	CAT A,B,C:1.8 CAT D:1.9	4.8

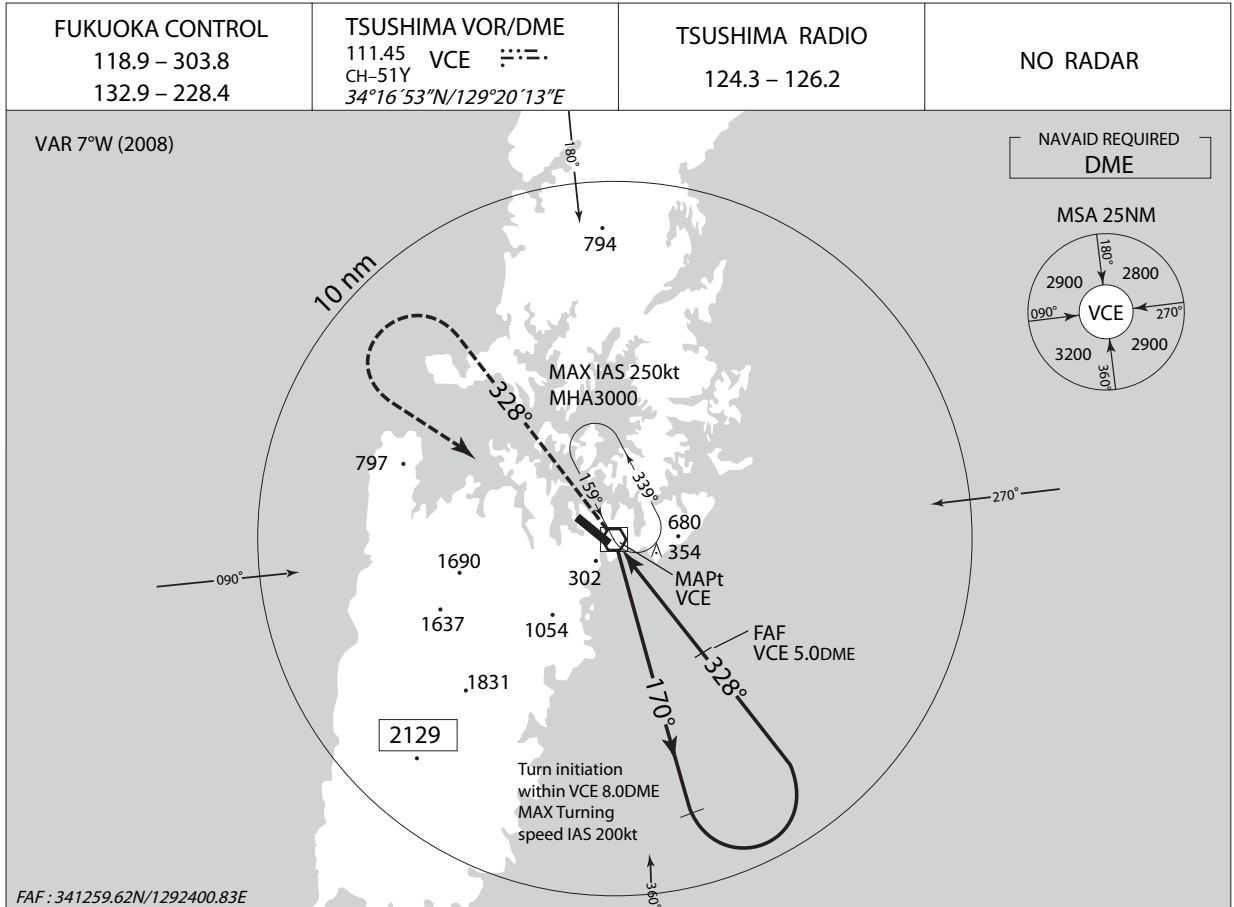
MINIMA	THR elev. 182		AD elev. 207	
CAT			CIRCLING	
	MDA(H)	CMV	MDA(H)	VIS
A	440 (258)	1500	690 (483)	1600
B			760 (553)	
C	450 (268)	1600	1090 (883)	2400
D	470 (288)	1800		3200

Circling to East side of RWY only.

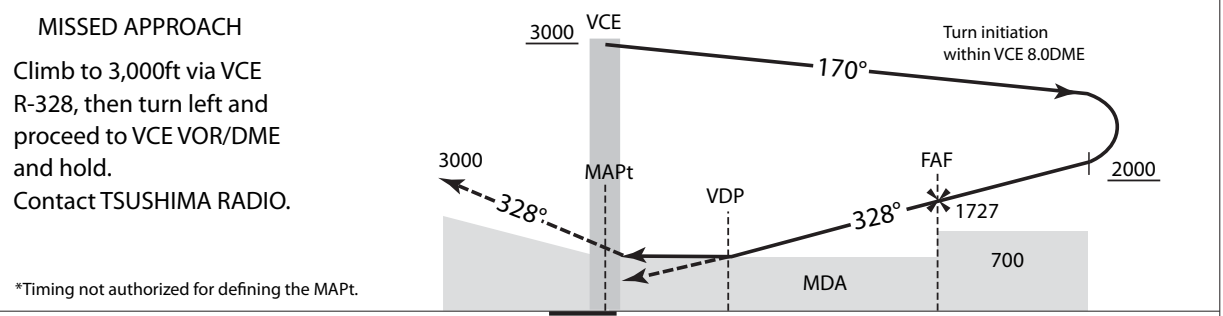
INSTRUMENT APPROACH CHART

RJDT / TSUSHIMA

VOR RWY32



NM to VCE	2	3	4	FAF
ALT (3.0° APCH Path)	822	1140	1459	1727



NM to RWY32	0	0.9	4.8
DME to VCE	0	1.1	5.0

MINIMA		THR elev. 182	AD elev. 207		
CAT			CIRCLING		
	MDA(H)	CMV	MDA(H)	VIS	
A	550 (368)	1500	690 (483)	1600	
B			760 (553)		
C			1800	1090 (883)	2400
D			2000		3200

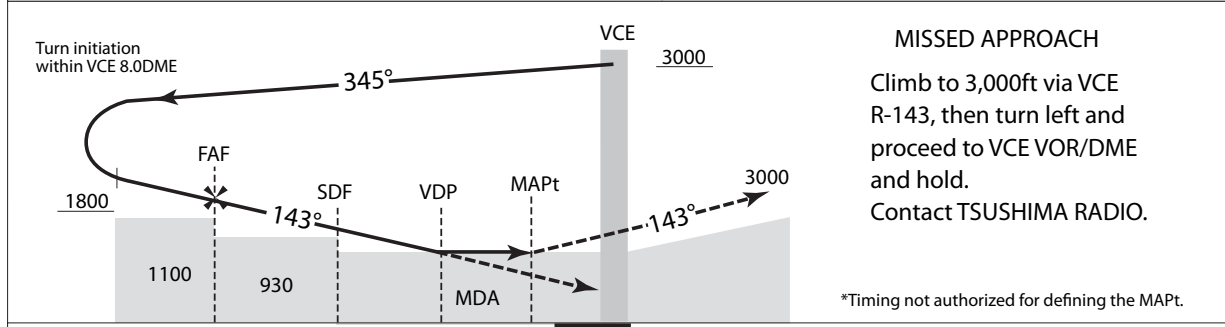
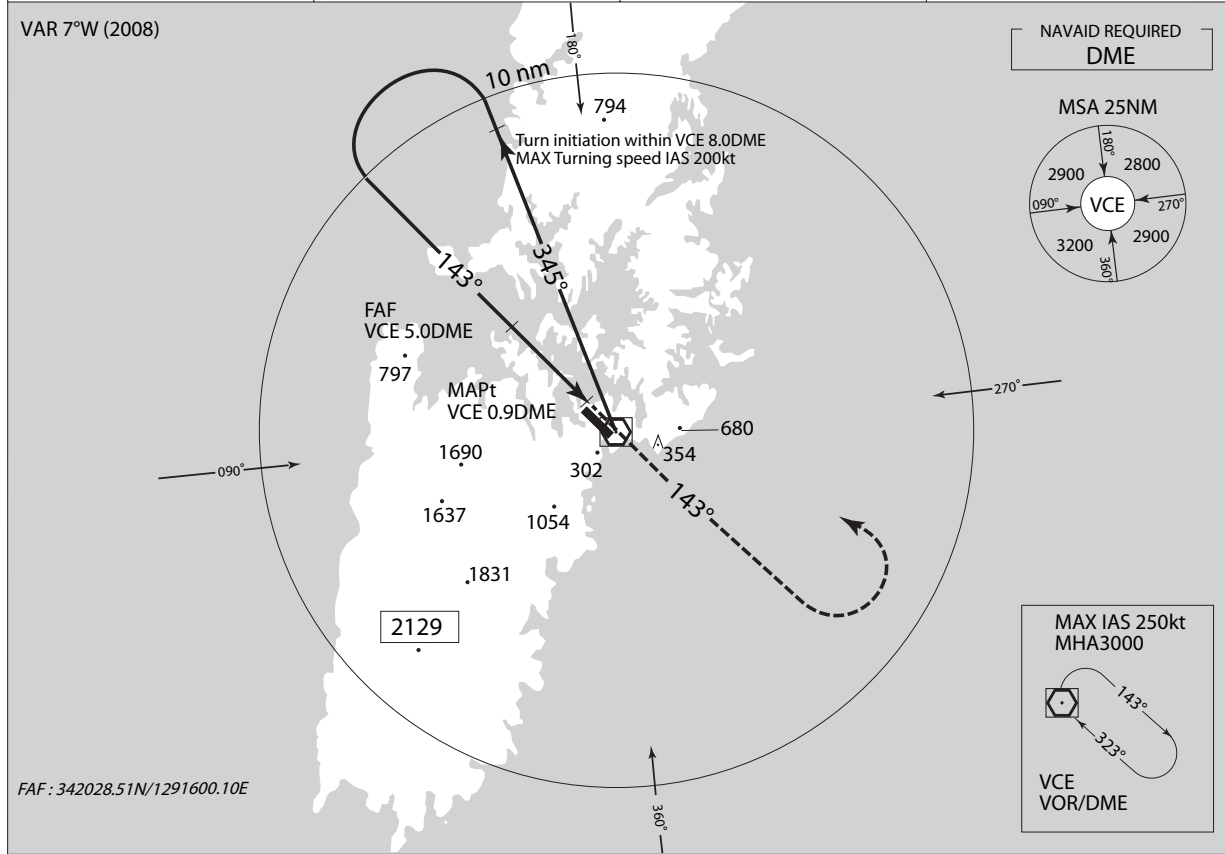
Circling to East side of RWY only.

INSTRUMENT APPROACH CHART

RJDT / TSUSHIMA

VOR RWY14

FUKUOKA CONTROL 118.9 – 303.8 132.9 – 228.4	TSUSHIMA VOR/DME 111.45 VCE $\text{---}\text{---}\text{---}$ CH-51Y 34°16'53"N/129°20'13"E	TSUSHIMA RADIO 124.3 – 126.2	NO RADAR
---	---	---------------------------------	----------



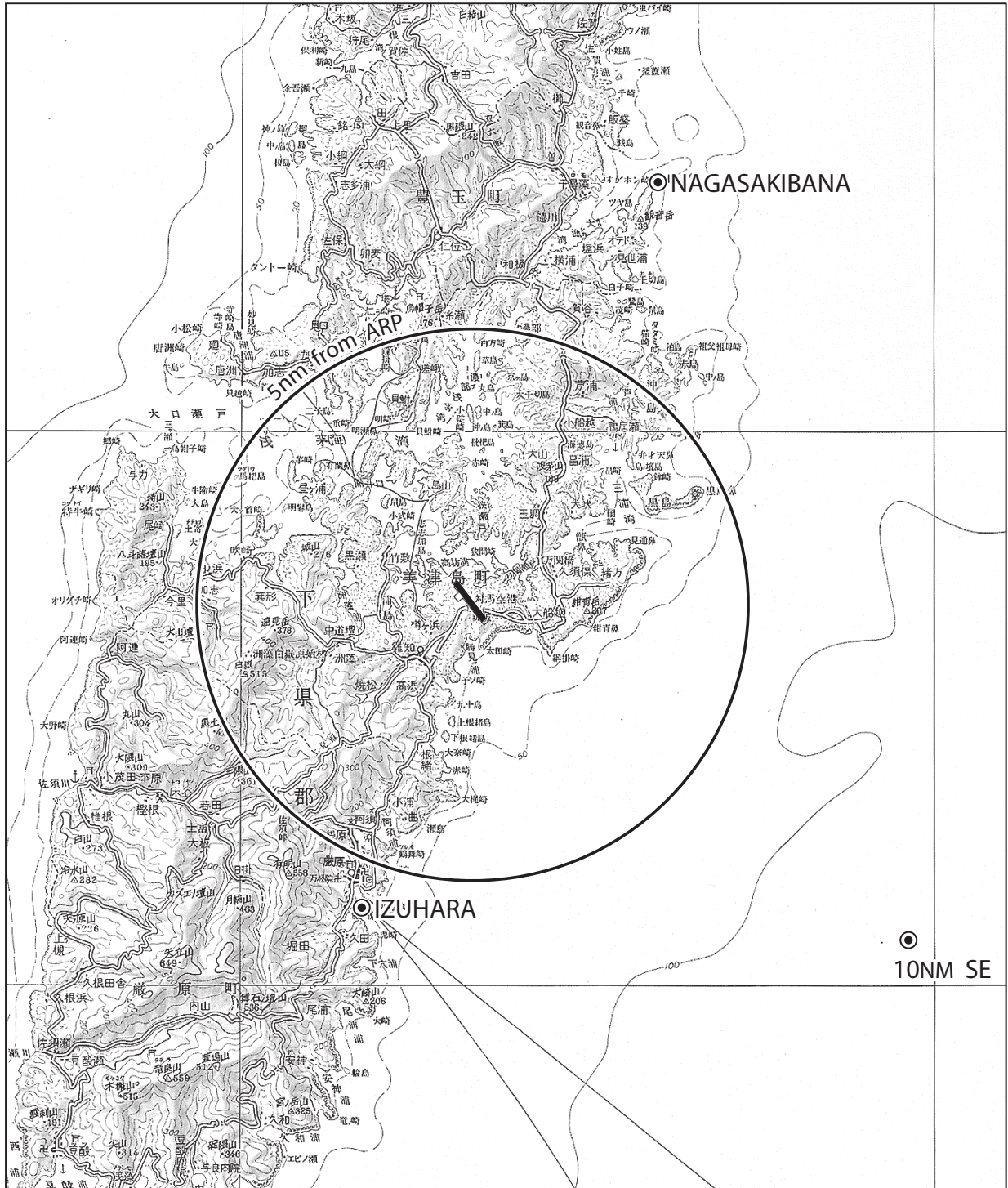
4.1	2.0	1.7	0	0	NM to RWY14
5.0	2.9	2.6	0.9	0	DME to VCE

MINIMA		THR elev. 205	AD elev. 207	
CAT	CIRCLING			
	MDA(H)	CMV	MDA(H) VIS	
A	780 (573)	1500	780 (573) 1600	
B			2400	
C			2000	1090 (883) 2400
D			3200	

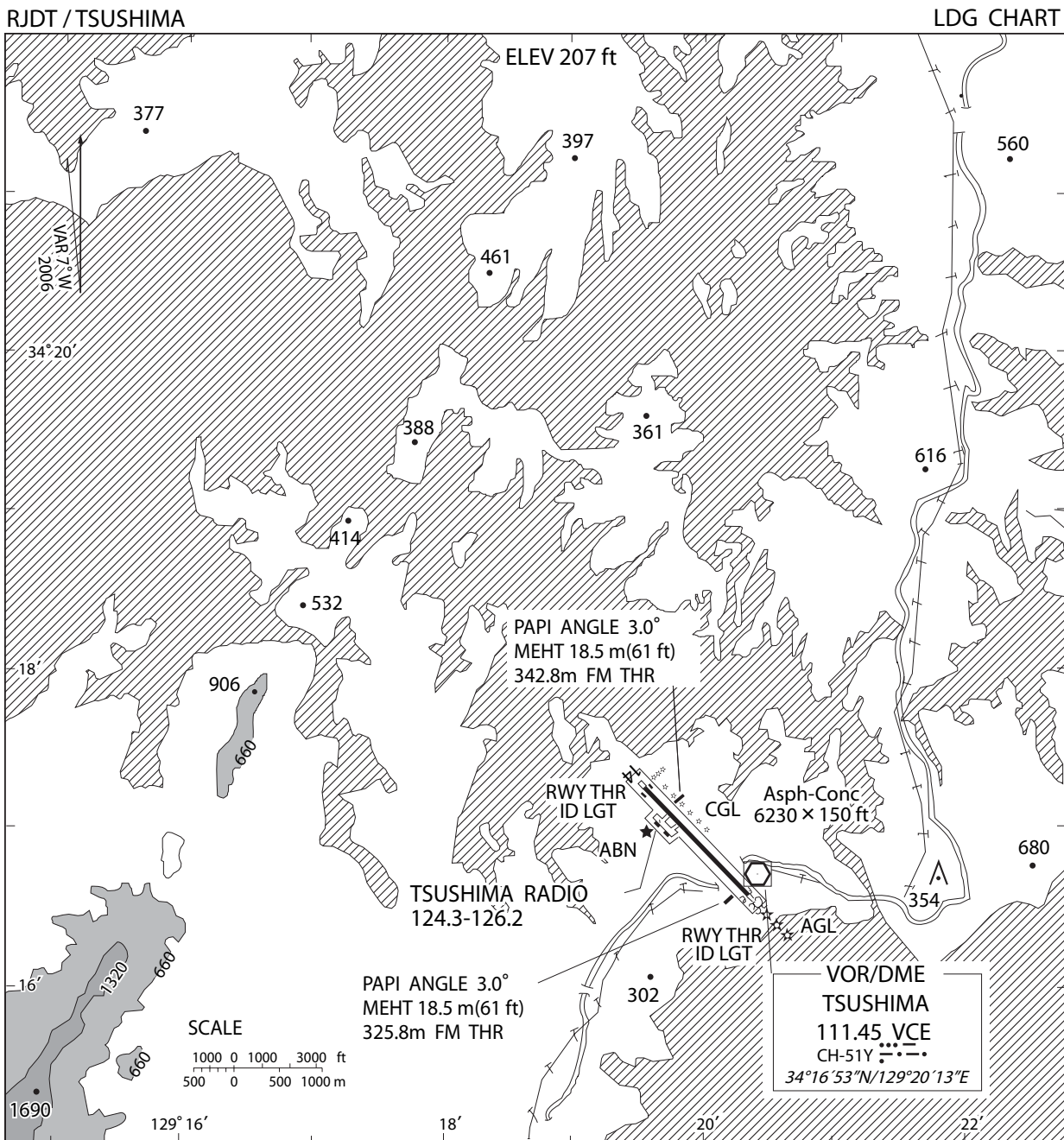
Circling to East side of RWY only.

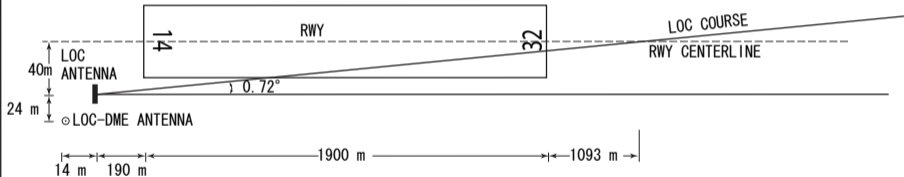
RJDT/TSUSHIMA

Visual REP



Call sign	BRG / DIST from ARP	Remarks
10NM SE	135°/10.0NM	海上 Over the sea
巖原 Izuhara	208°/ 6.0NM	港 Harbor
長崎鼻 Nagasakibana	031°/ 8.0NM	灯台 Lighthouse



LOC and LOC-DME

- REMARKS :
1. LOC OFFSET ANGLE 0.72°
 2. LOC beam BRG (MAG) 322°
 3. ELEV of LOC-DME 65.1m (213.6ft)