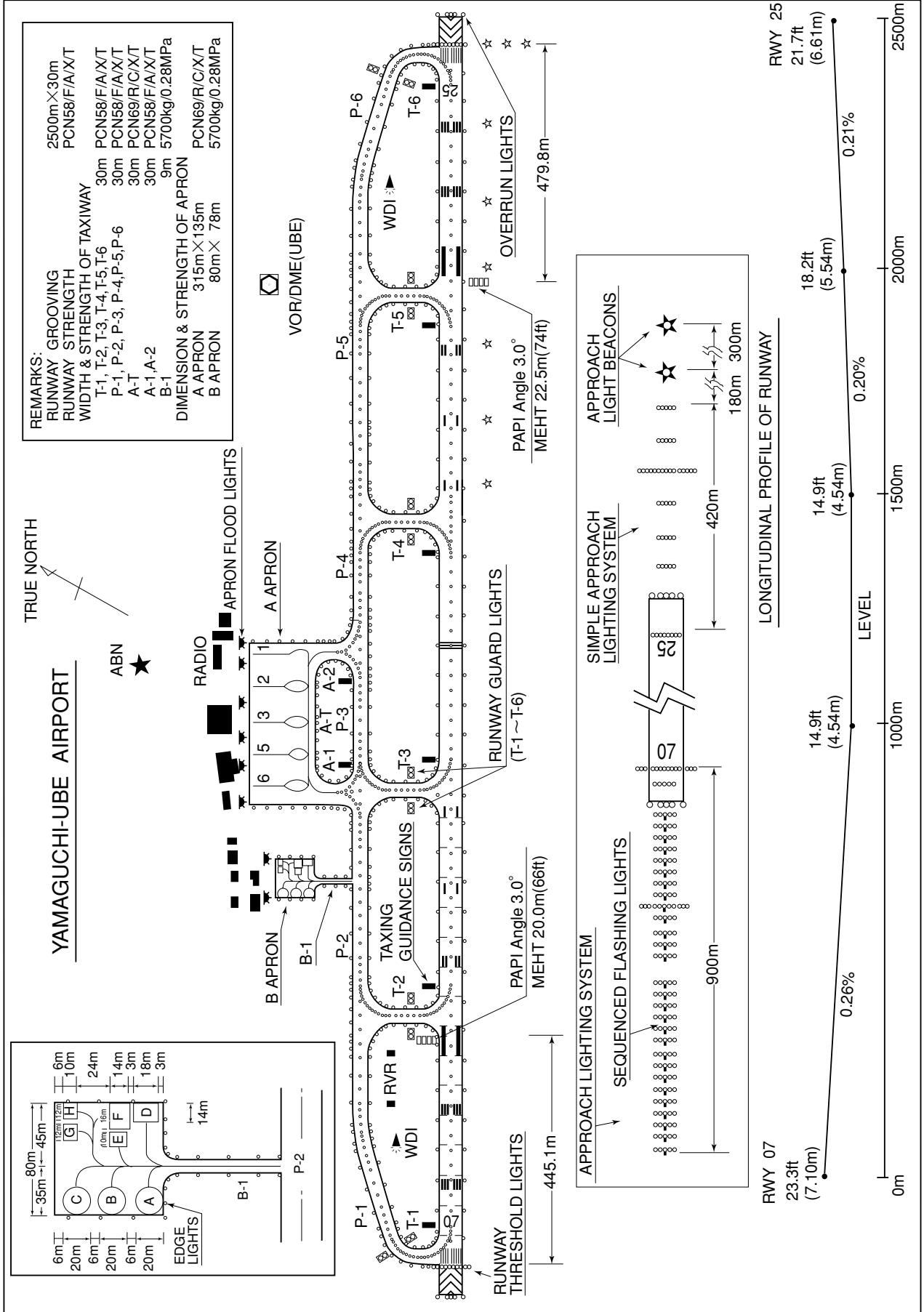


RJDC / YAMAGUCHI-UBE

AD CHART



STANDARD DEPARTURE CHART - INSTRUMENT

RJDC / YAMAGUCHI-UBE

SID and TRANSITON

UBE REVERSAL ONE DEPARTURE

RWY07 : Climb RWY HDG to 500FT, then turn right,....

RWY25 : Climb RWY HDG to 500FT, then turn left, climb via HDG 100 DEG to intercept UBE R-133,

....climb via UBE R-133 to 3,000FT, then turn right and proceed to UBE VOR/DME.

Cross UBE VOR/DME at or above 5,000FT.

5.0% climb gradient required until 5,000FT due to airspace restrictions only.

HIMEH SEVEN DEPARTURE

RWY 07 : Climb RWY HDG to 500FT, then turn right....

RWY 25 : Climb RWY HDG to 500FT, then turn left, climb via HDG 100DEG to intercept UBE R-133,...

....climb via UBE R-133 to HIMEH.

KUGA TRANSITION

After HIMEH, turn left and proceed via IWC R-239 to IWC VORTAC.

MATSUYAMA TRANSITION

After HIMEH, proceed via UBE R-133 to intercept and proceed via MPE R-258 to MPE VOR/DME.

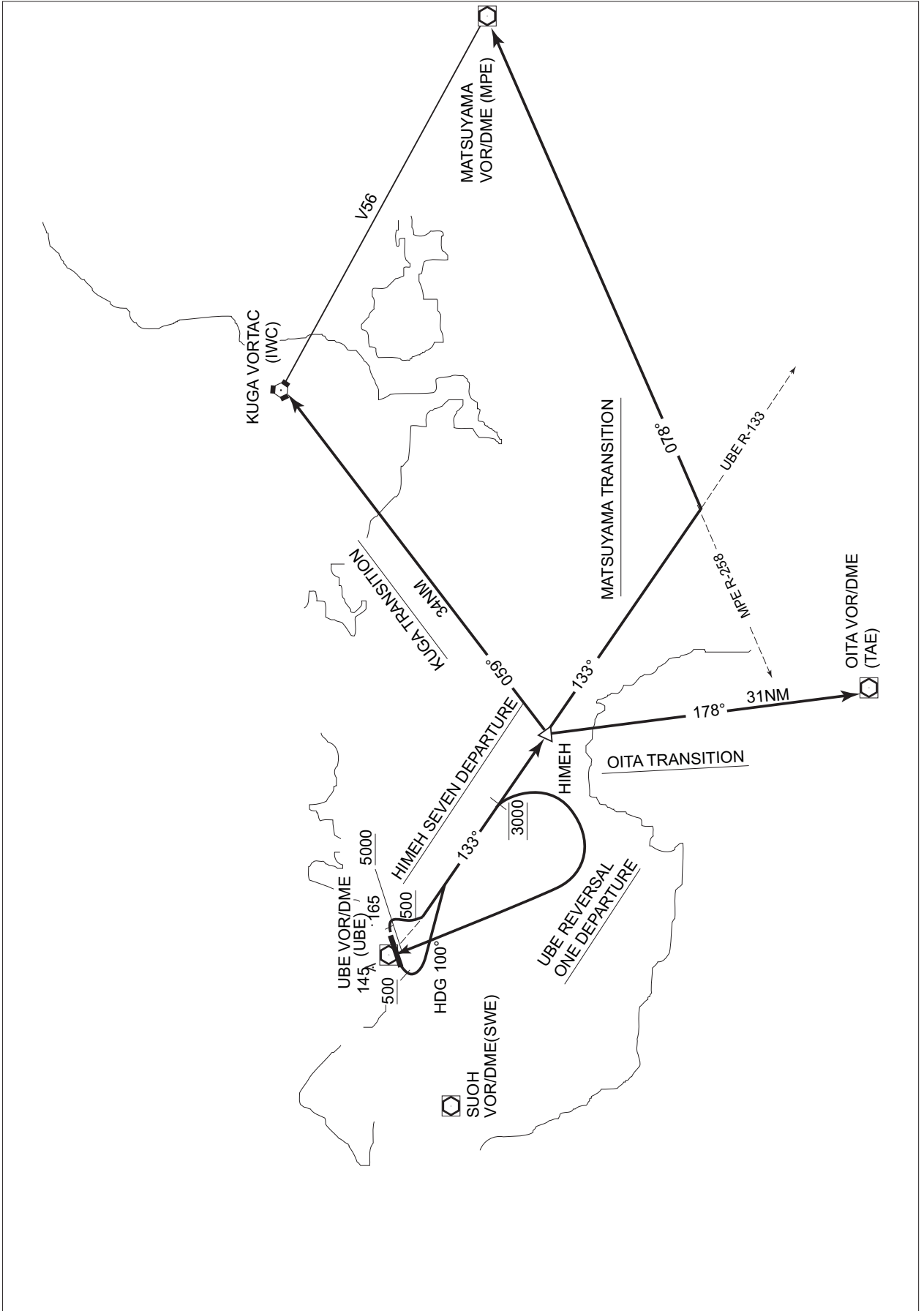
OITA TRANSITION

After HIMEH, turn right and proceed via TAE R-358 to TAE VOR/DME.

STANDARD DEPARTURE CHART - INSTRUMENT

RJDC / YAMAGUCHI-UBE

SID and TRANSITION



STANDARD DEPARTURE CHART - INSTRUMENT

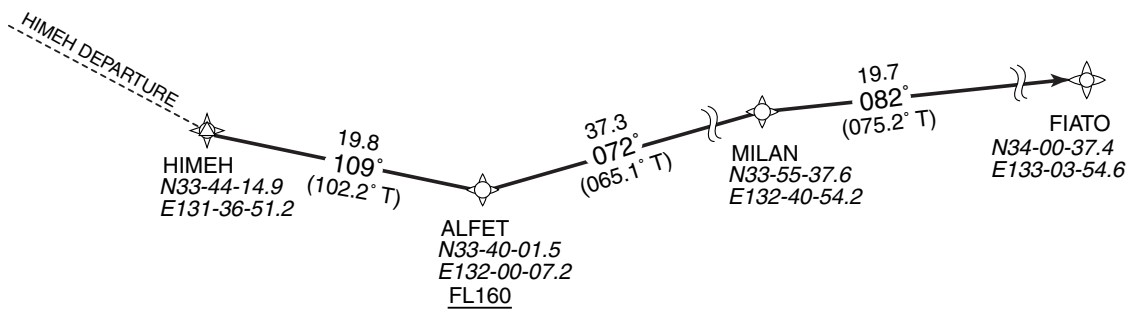
RJDC / YAMAGUCHI-UBE

➔ RNAV TRANSITION

ABARTO TRANSITION		RNAV 1
Note 1) DME/DME/IRU or GNSS required. 2) RADAR service required.	Critical DME	-
	DME GAP	-
	Inappropriate Nav aids	See AD1.1.6.10.3. Inappropriate NAVAIDs for RNAV1

VAR 7°W (2012)

ABARTO TRANSITION



ABARTO TRANSITION

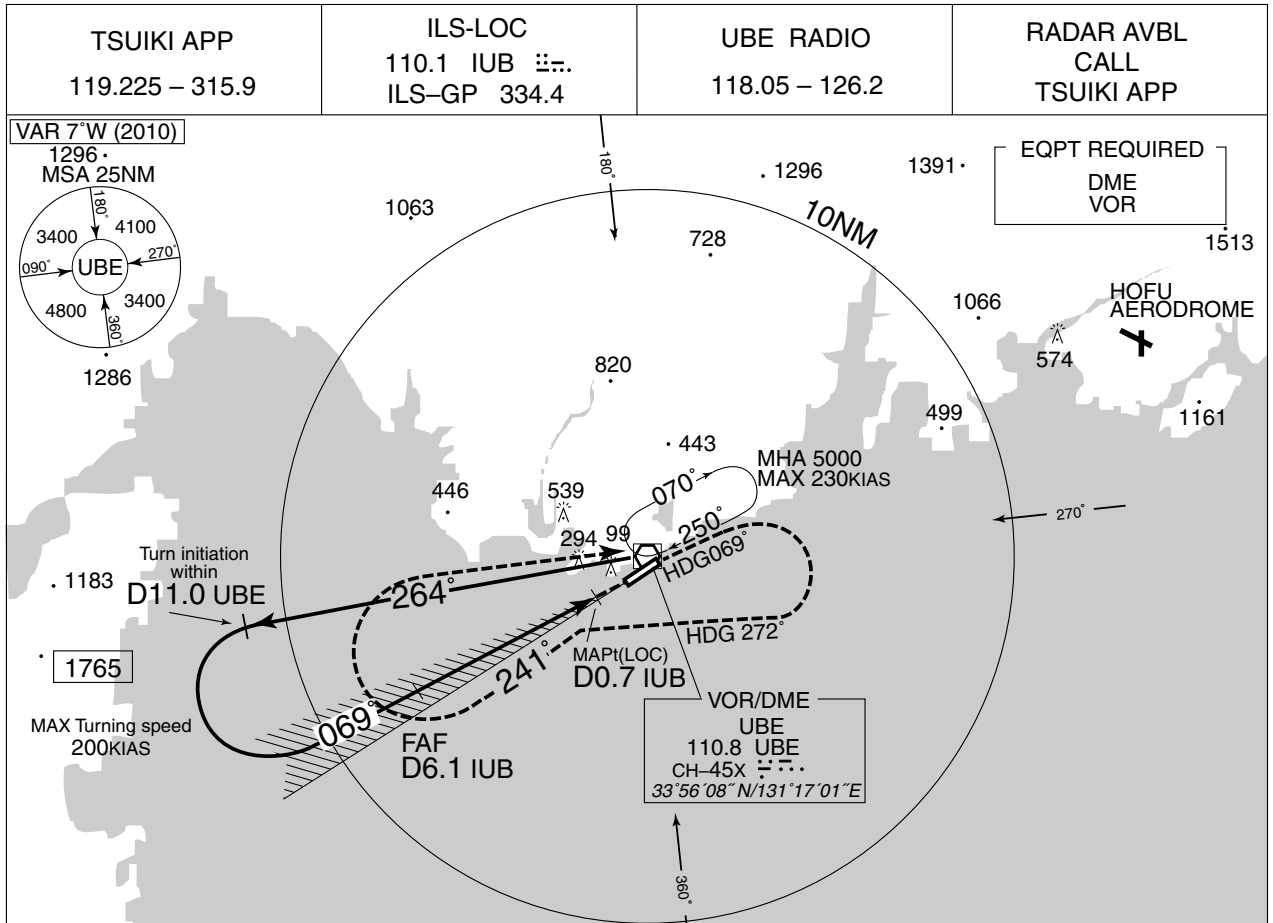
From HIMEH, to ALFET at or above FL160, to MILAN, to FIATO.

Rcmd. Path Terminator	Fix ID (Waypoint Name)	Fly Over	Distance (NM)	MAG Track (TRUE Track)	Turn Direction	Altitude (FT)	Speed Limit (KIAS)	Vertical Angle	Navigation Performance
IF	HIMEH	—	—	—	—	—	—	—	RNAV1
TF	ALFET	—	19.8	109° (102.2°)	—	+FL160	—	—	RNAV1
TF	MILAN	—	37.3	072° (065.1°)	—	—	—	—	RNAV1
TF	FIATO	—	19.7	082° (075.2°)	—	—	—	—	RNAV1

INSTRUMENT APPROACH CHART

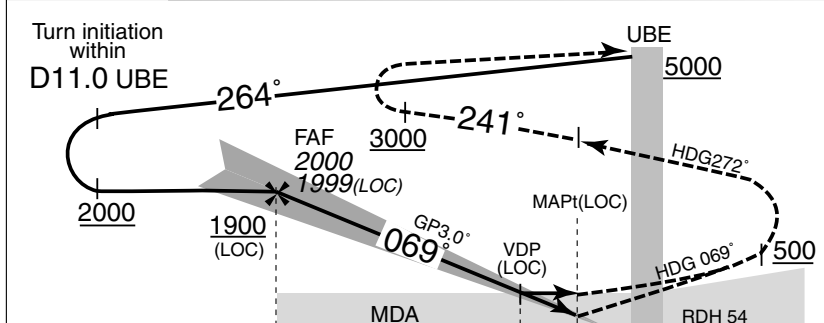
RJDC / YAMAGUCHI-UBE

ILS or LOC RWY 07



NM to IUB	FAF	6	5	4	3	2	MAPt
ALT (3.0° APCH Path)	1999	1931	1612	1294	975	657	-

FAF : 335239.58N/1310934.96E



MISSED APPROACH
Climb to 500FT on HDG 069°, turn right climb to 5000FT on HDG 272° to intercept and proceed via UBE R241 until reaching 3000FT, turn right direct to UBE VOR/DME and hold.
Contact TSUIKI APP.
Timing not authorized for defining the MAPt.

DME to IUB	6.1	1.1	0.7	0
NM to THR	5.9	0.9	0.6	0

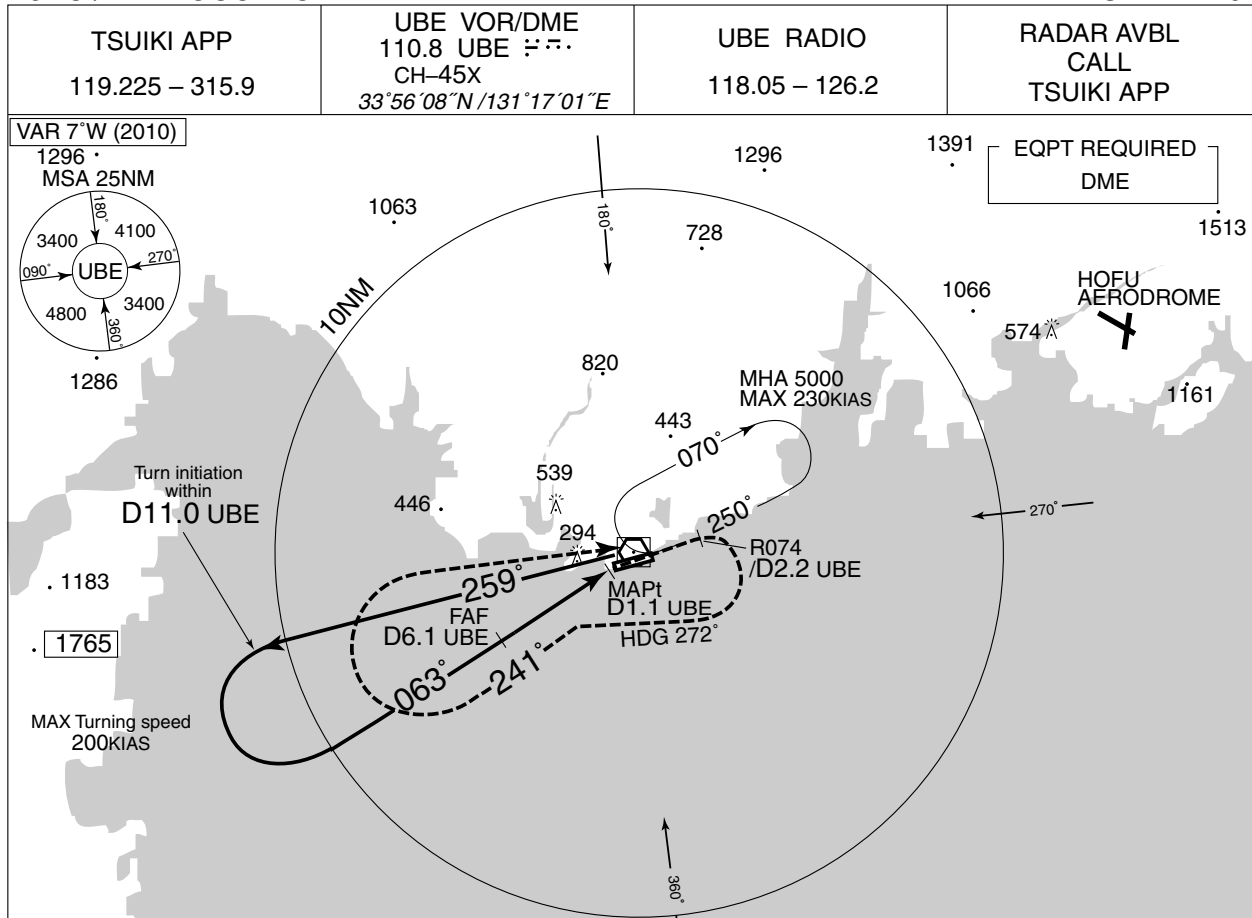
MINIMA		THR elev. 23		AD elev. 15		
CAT	CAT I		LOC		CIRCLING	
	DA(H)	RVR/CMV	MDA(H)	RVR/CMV	MDA(H)	VIS
A	223 (200)	550	370 (355)	900	440 (425)	1600
B				1000	470 (455)	
C				1400	570 (555)	2400
D						3200

Circling to SOUTH side of RWY only.

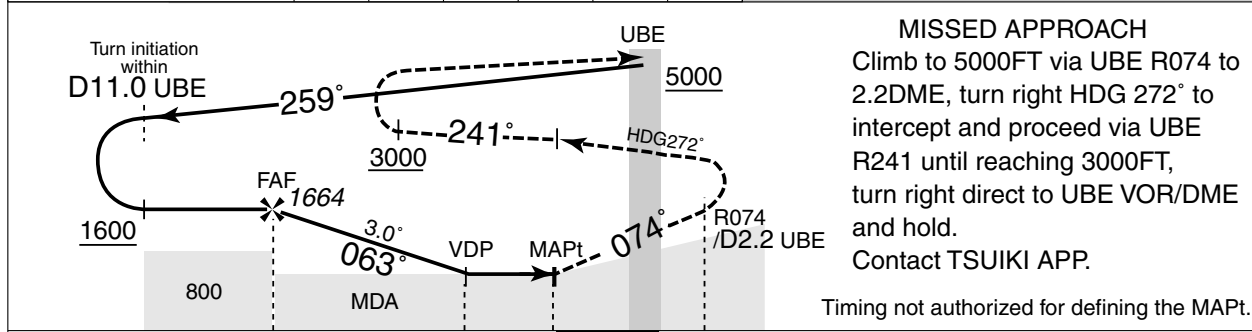
INSTRUMENT APPROACH CHART

RJDC / YAMAGUCHI-UBE

VOR RWY 07



NM To UBE	FAF	6	5	4	3	MAPt	
ALT (3.0° APCH Path)	1664	1645	1327	1008	690	-	FAF : 335245.50N/1311057.85E



MISSED APPROACH
Climb to 5000FT via UBE R074 to 2.2DME, turn right HDG 272° to intercept and proceed via UBE R241 until reaching 3000FT, turn right direct to UBE VOR/DME and hold.
Contact TSUIKI APP.
Timing not authorized for defining the MAPt.

DME to UBE	6.1	2.2	1.1				
NM to THR	5.0	1.2	0				

MINIMA		THR elev. 23		AD elev. 15		
CAT	CIRCLING					
	MDA(H)	RVR/CMV	MDA(H)	VIS		
A	400 (385)	900	440 (425)	1600		
B		1000	470 (455)			
C				2400		
D		1400	570 (555)	3200		

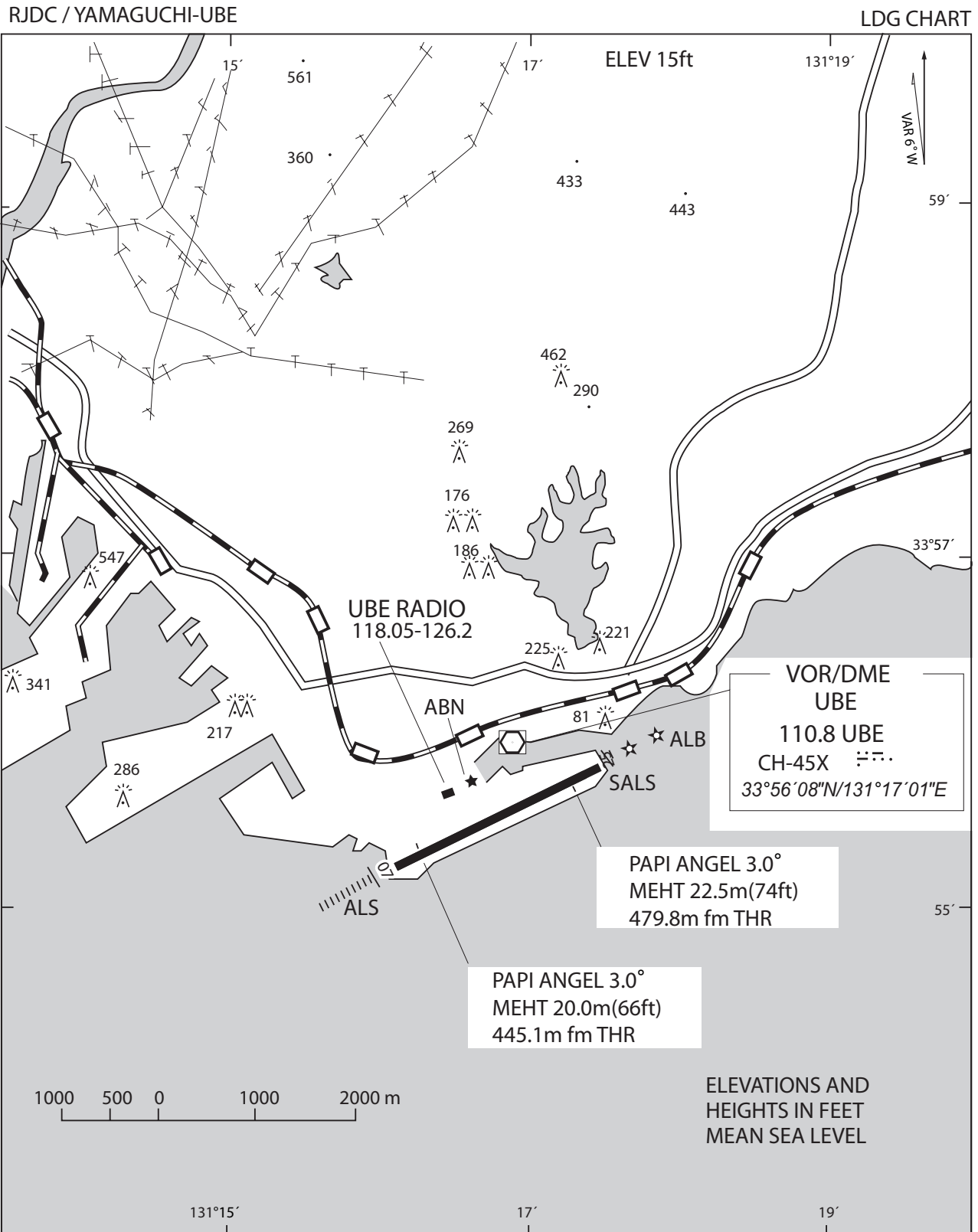
Circling to SOUTH side of RWY only.

RJDC / YAMAGUCHI-UBE

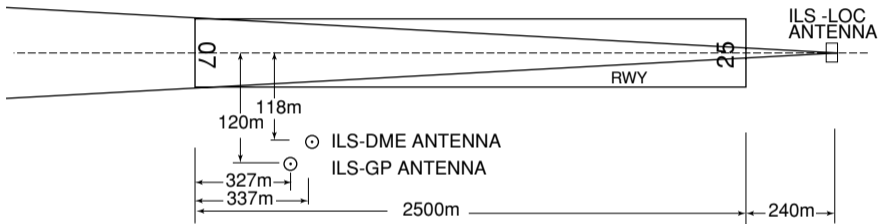
Visual REP



Call sign	BRG / DIST from ARP	Remarks
小 郡 Ogohri	031°/ 11.4NM	JR駅 Station
小 野 田 Onoda	318°/ 7.2NM	高速道路インターチェンジ Interchange
丸 山 だ ん Maruyama Dam	002°/ 7.1NM	だ ん Dam
本 山 岬 Motoyamamisaki	271°/ 5.0NM	岬 Cape
周 防 大 橋 Suohohashi	042°/ 8.3NM	橋 Bridge
竹 島 Takeshima	072°/ 7.6NM	島 Island



YAMAGUCHI-UBE AP



REMARKS : 1. LOC beam BRG(MAG) 069°
2. HGT of ILS REF datum 16.5m(54ft)
3. GP Angle 3.0°
4. ELEV of ILS-DME 10.7m(35ft)