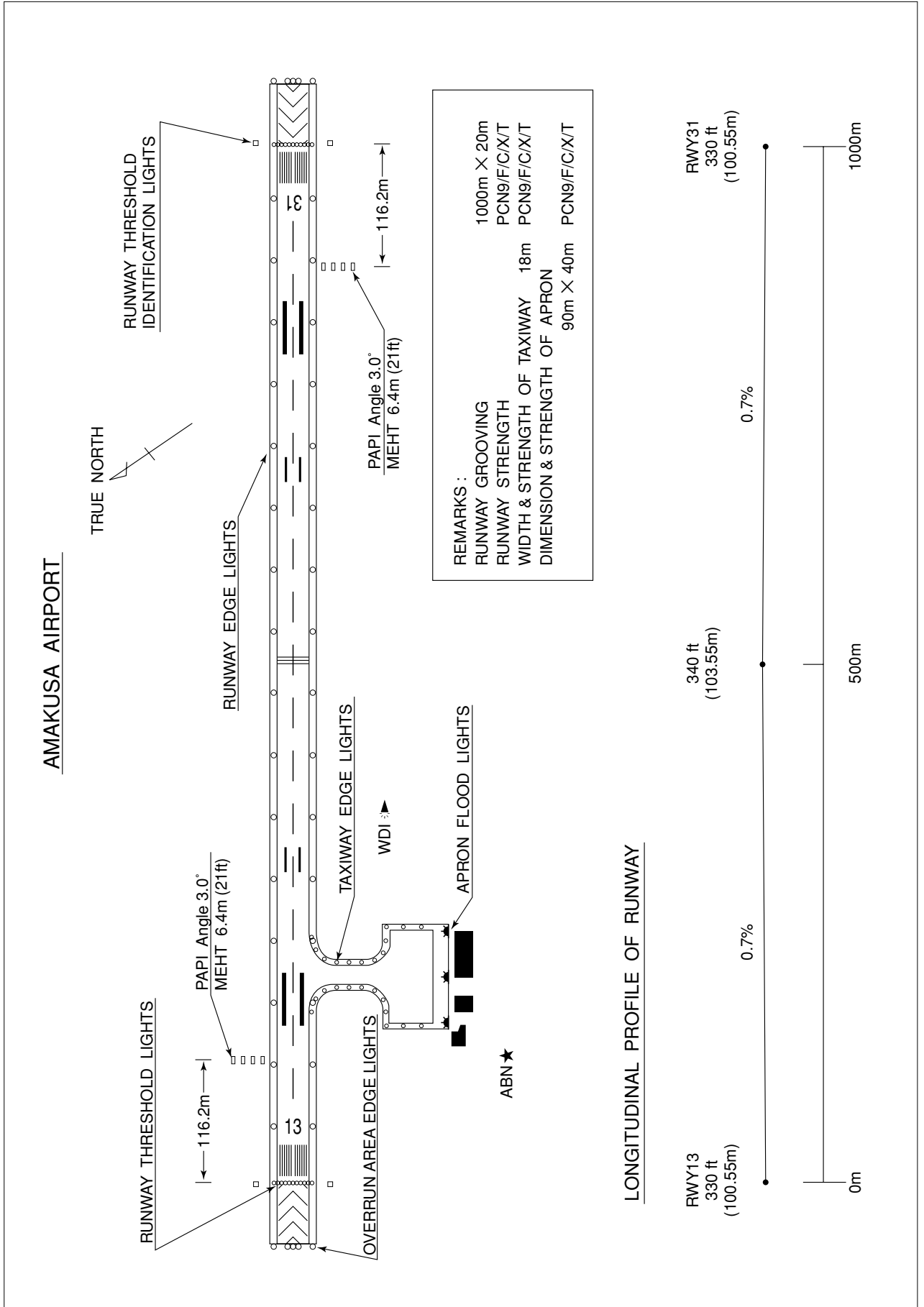


RJDA / AMAKUSA

AD CHART



STANDARD DEPARTURE CHART - INSTRUMENT

RJDA / AMAKUSA

SID

FUGEN TWO DEPARTURE

RWY13 : Turn left,.....

RWY31 : Turn right,.....

.....climb via AKE R064 to FUGEN.

Cross AKE R064/12.3DME at 4000FT, and cross FUGEN at or above 6000FT.

Note : When take off from RWY31, following climb gradient should be maintained until 1000FT.

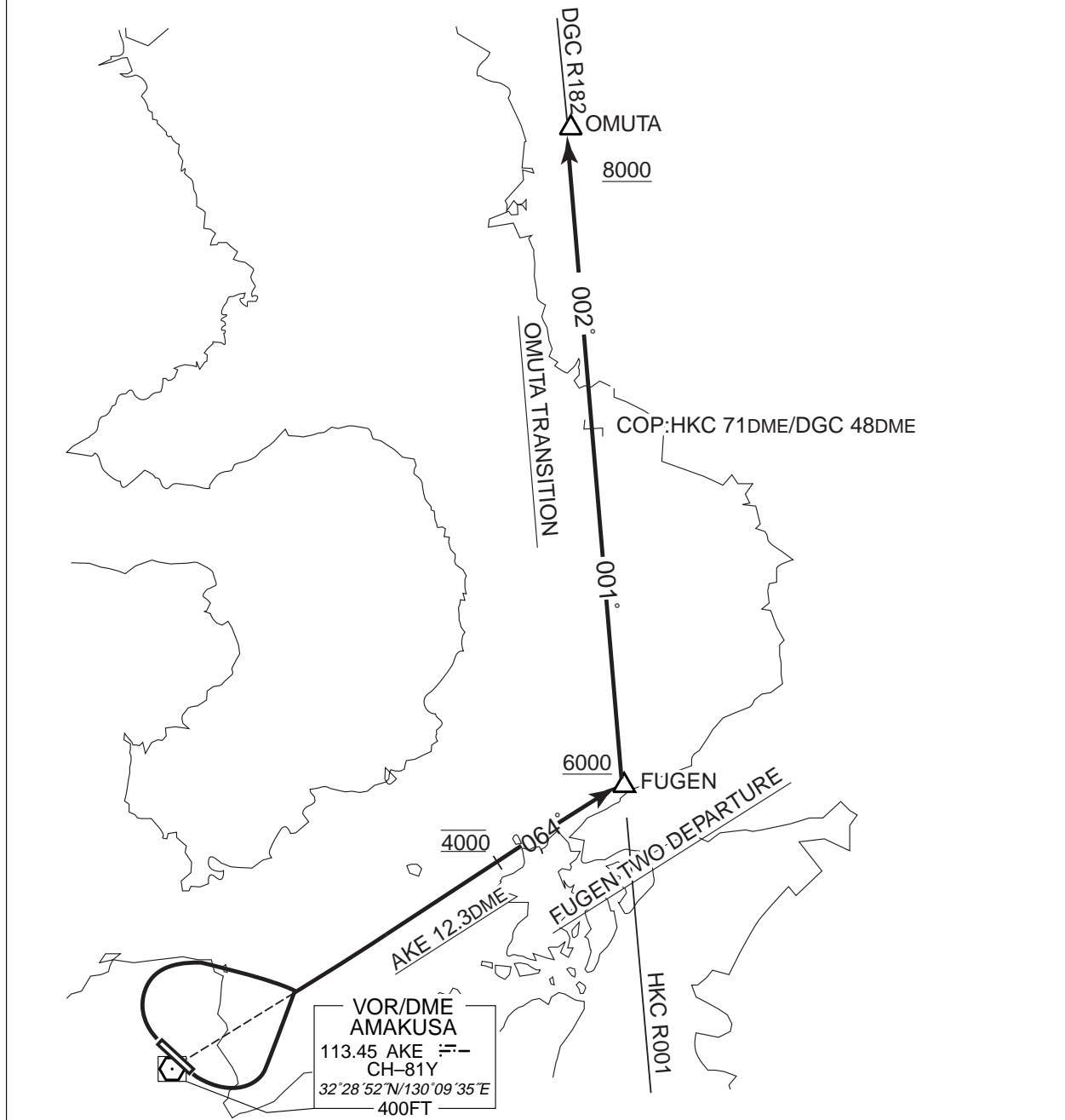
|                 |     |     |     |     |     |      |
|-----------------|-----|-----|-----|-----|-----|------|
| Speed (Knots)   | 60  | 90  | 120 | 150 | 180 | 210  |
| Rate (Feet/Min) | 300 | 450 | 600 | 750 | 900 | 1050 |

OMUTA TRANSITION

After FUGEN, via HKC R001 to 71DME and DGC R182 to OMUTA.

Cross OMUTA at or above 8000FT.

Note: COP between HKC VORTAC and DGC VORTAC: HKC 71DME/DGC 48DME.



STANDARD DEPARTURE CHART - INSTRUMENT

RJDA / AMAKUSA

SID

MISMI TWO DEPARTURE

RWY13 : Turn left,.....

RWY31 : Turn right,.....

.....climb via AKE R063 to MISMI. Cross AKE R063/12.7DME at 4000FT.

Note: When take off from RWY31, following climb gradient should be maintained until 1000FT.

|                 |     |     |     |     |     |      |
|-----------------|-----|-----|-----|-----|-----|------|
| Speed (Knots)   | 60  | 90  | 120 | 150 | 180 | 210  |
| Rate (Feet/Min) | 300 | 450 | 600 | 750 | 900 | 1050 |

AMAKUSA REVERSAL ONE DEPARTURE

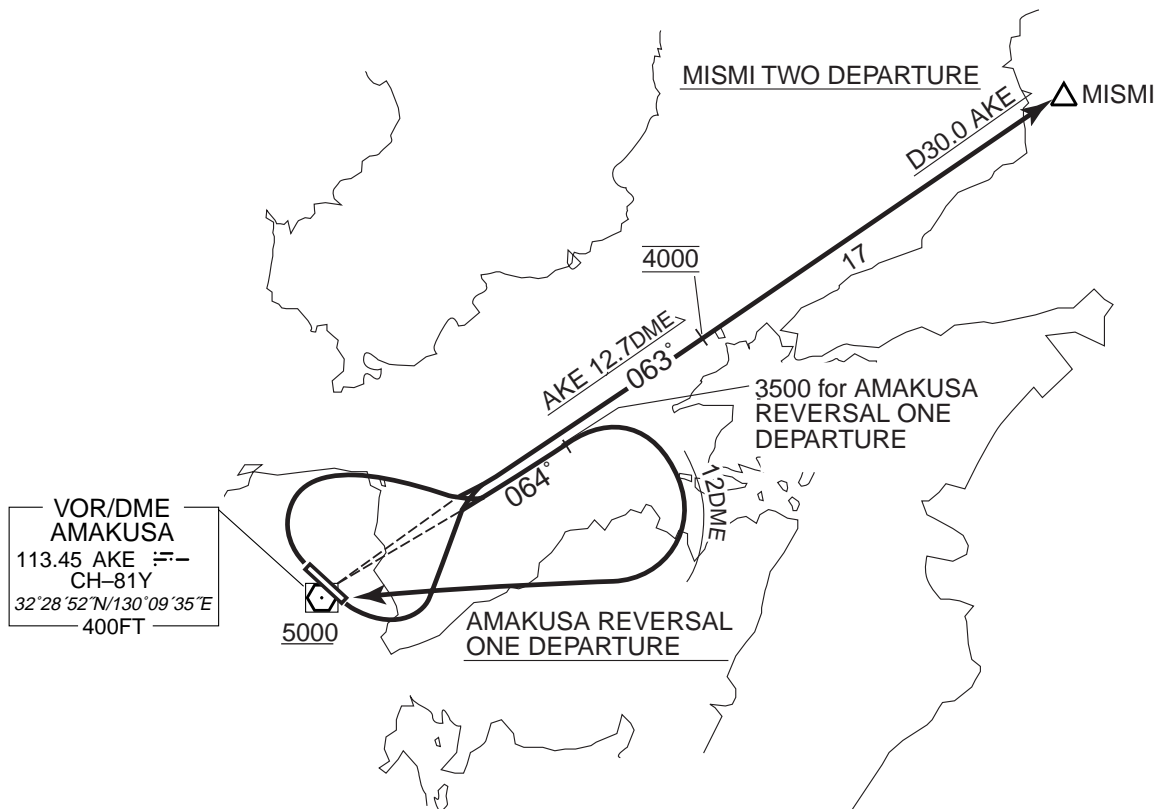
RWY13 : Turn left,.....

RWY31 : Turn right,.....

.....climb via AKE R064 to 3500FT or above, then turn right to AKE VOR/DME within AKE 12DME. Cross AKE VOR/DME at or above 5000FT.

Note : When take off from RWY31, following climb gradient should be maintained until 1000FT.

|                 |     |     |     |     |     |      |
|-----------------|-----|-----|-----|-----|-----|------|
| Speed (Knots)   | 60  | 90  | 120 | 150 | 180 | 210  |
| Rate (Feet/Min) | 300 | 450 | 600 | 750 | 900 | 1050 |



STANDARD ARRIVAL CHART - INSTRUMENT

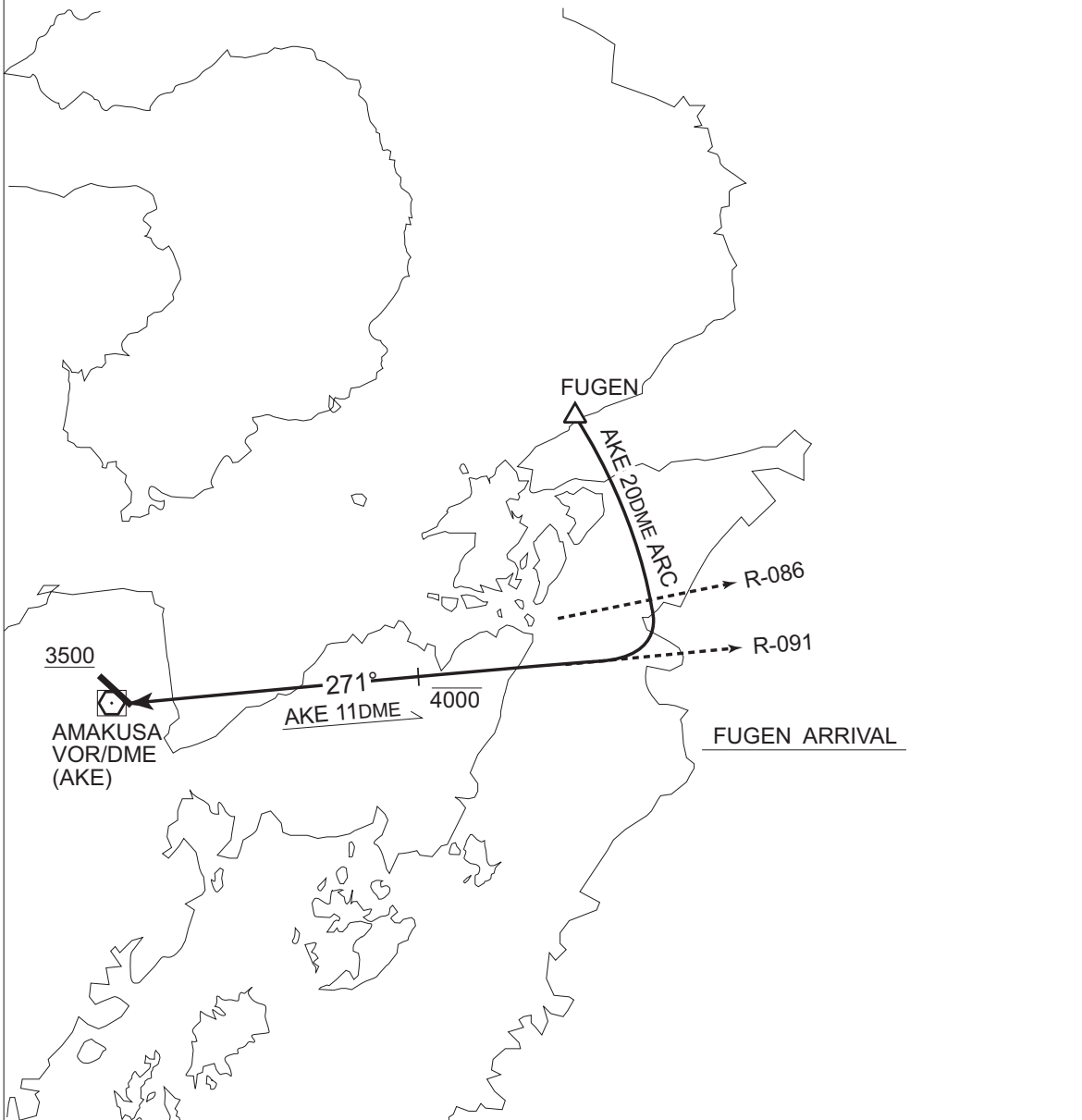
RJDA / AMAKUSA

STAR

FUGEN ARRIVAL

From over FUGEN, via AKE 20DME clockwise ARC to intercept and proceed via AKE R-091 to AKE VOR/DME.

Cross AKE R-091/11DME at or below 4000FT, and cross AKE VOR/DME at or above 3,500FT.

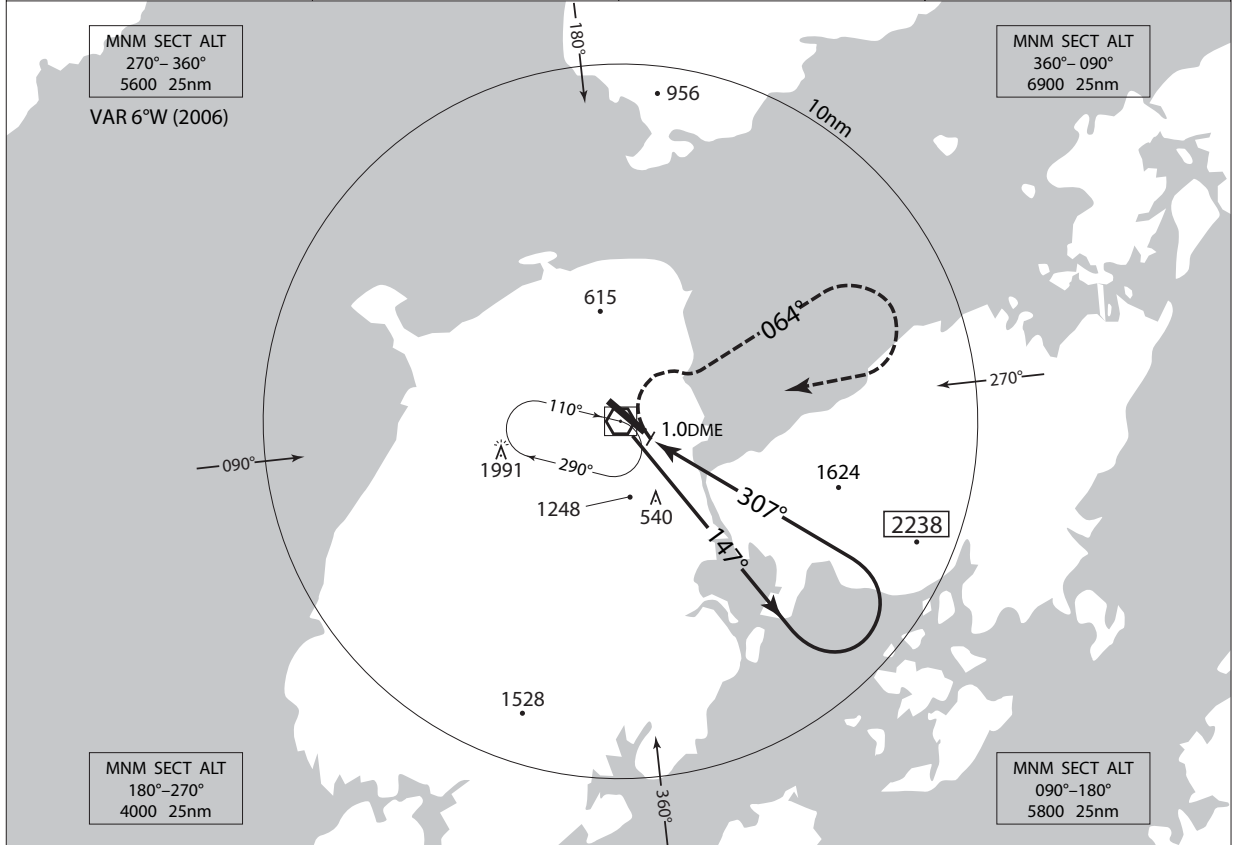


INSTRUMENT APPROACH CHART

RJDA / AMAKUSA

VOR/DME A

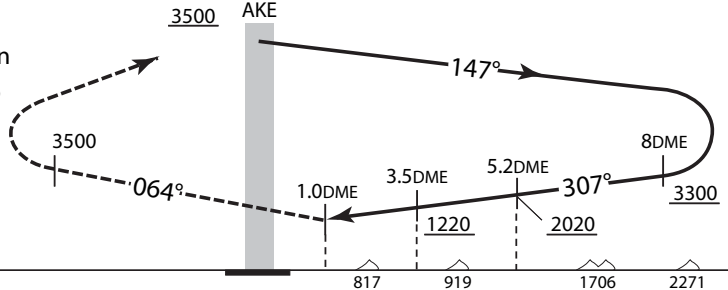
|  |   |   |          |
|--|---|---|----------|
| KUMAMOTO APP<br>119.0 – 126.5<br>122.9 – 258.9 | AMAKUSA VOR/DME<br>113.45 AKE<br>CH-81Y<br>32°28'52"N/130°09'35"E | - | NO RADAR |
|--|---|---|----------|



MISSED APPROACH

At 1.0DME prior to AKE VOR/DME, turn right climb via AKE R-064 to 3,500ft, then turn right within AKE 10DME, proceed to AKE VOR/DME and hold at 3,500ft. Contact KUMAMOTO APP.

Remain within AKE 10DME



|        |            |              |  |
|--------|------------|--------------|--|
| MINIMA |            | AD elev. 340 |  |
| CAT    | CIRCLING   |              |  |
|        | MDA(H)     | VIS          |  |
| A      | 1120 (780) | 1600         |  |
| B      |            |              |  |
| C      | -          | -            |  |
| D      | -          | -            |  |

Circling to North side of RWY only.

RJDA/AMAKUKSA

Visual REP



※AMAKUSA FLIGHT SERVICE : 130.775MHz

| Call sign          | BRG / DIST from ARP | Remarks     |
|--------------------|---------------------|-------------|
| 口之津<br>Kuchinotsu  | 020° / 8.0NM        | 港<br>Port   |
| 湯島<br>Yushima      | 058° / 11.9NM       | 島<br>Island |
| 通詞島<br>Tsuujishima | 334° / 4.8NM        | 島<br>Island |
| 島子<br>Shimago      | 101° / 4.6NM        | 漁港<br>Port  |
| 横島<br>Yokoshima    | 158° / 7.5NM        | 島<br>Island |
| 富岡<br>Tomioka      | 299° / 7.7NM        | 岬<br>Cape   |

RJDA/AMAKUSA

LDG CHART

