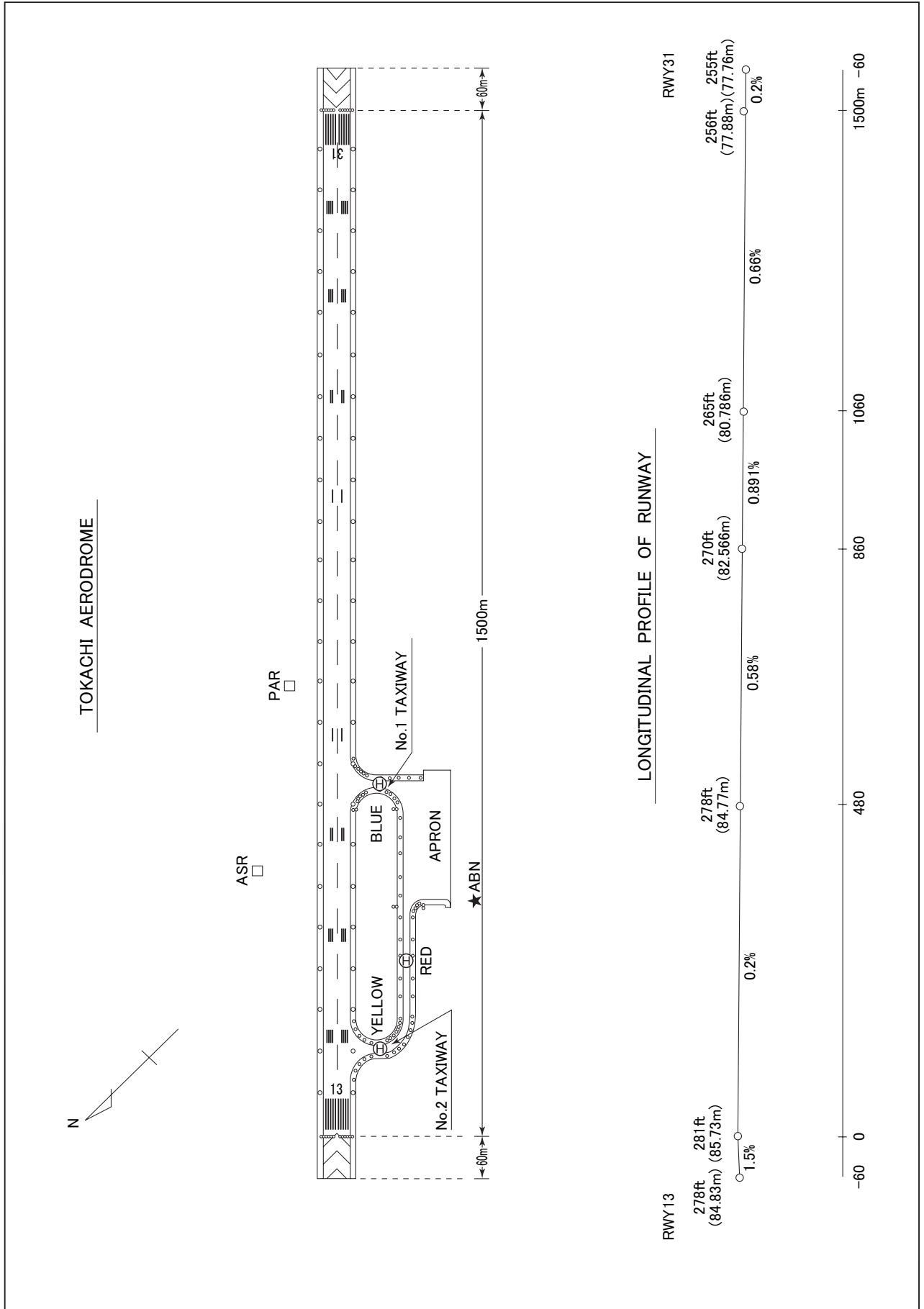


RJCT / TOKACHI

AD CHART



STANDARD DEPARTURE CHART - INSTRUMENT

RJCT / TOKACHI

SID

EAST THREE DEPARTURE

RWY 13 : Turn left,....

RWY 31 : Turn right,....

....climb via 089 DEG from OH NDB to KSE VOR/DME.

Cross 20NM east of OH NDB at or above 5,000ft.

Note : When take off RWY31, following climb gradient should be maintained until 500ft.

Speed (Knots)	60	90	120	150	180	210
Rate (Feet/Min)	300	450	600	750	900	1050

NOTAK ONE DEPARTURE

RWY 13 : Turn right,....

RWY 31 : Turn left,....

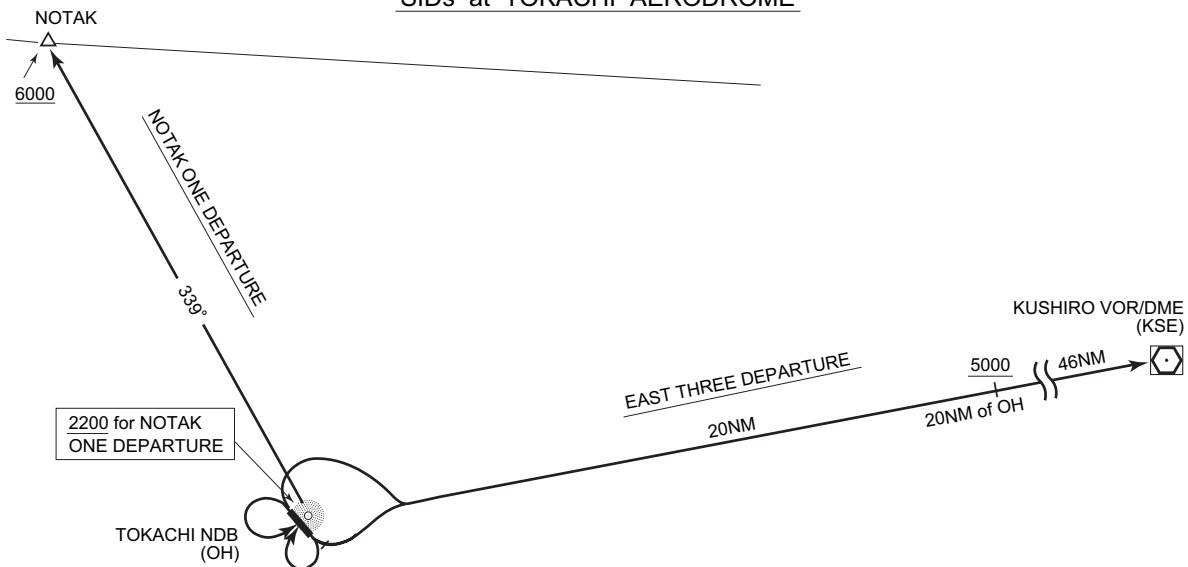
....climb to OH NDB, then via 339 DEG from OH NDB to NOTAK.

Cross OH NDB at or above 2,200ft, cross NOTAK at or above 6,000ft.

Note : Following climb gradient should be maintained until 500ft.

Speed (Knots)	60	90	120	150	180	210
Rate (Feet/Min)	300	450	600	750	900	1050

SIDs at TOKACHI AERODROME



STANDARD DEPARTURE CHART - INSTRUMENT

RJCT / TOKACHI

SID

TOKACHI REVERSAL TWO DEPARTURE

RWY 13 : Turn left,.....

RWY 31 : Turn right,.....

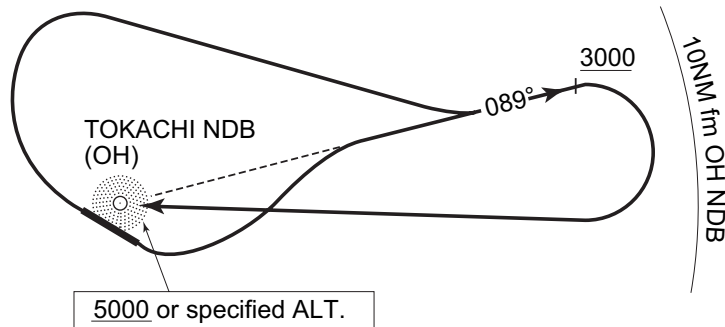
....climb via 089 DEG from OH NDB to 3,000ft or above, then turn right  
proceed to OH NDB within 10NM of OH NDB.

Cross OH NDB at or above 5,000ft or specified altitude.

Note : When take off RWY31, following climb gradient should be maintained  
until 500ft.

Speed (Knots)	60	90	120	150	180	210
Rate (Feet/Min)	300	450	600	750	900	1050

TOKACHI REVERSAL TWO DEPARTURE

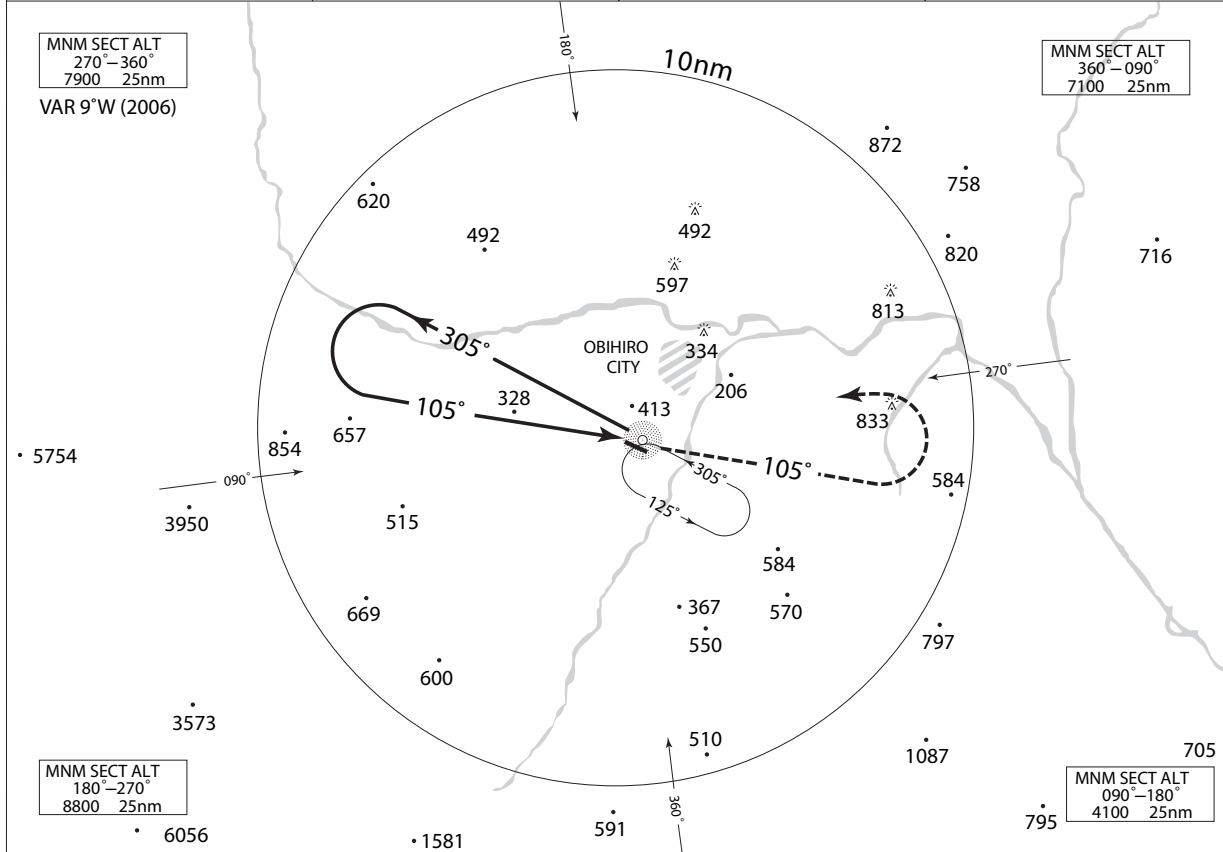


INSTRUMENT APPROACH CHART

RJCT / TOKACHI

ADF RWY 13

SAPPORO CONTROL 127.5 – 246.1 134.25 – 260.4	TOKACHI NDB 239 OH $\text{---}\text{---}\text{---}\text{---}$ 42°53'59"N/143°09'30"E	TOKACHI TOWER 122.2	GCA AVAILABLE
--	--	------------------------	---------------



Remain within 10nm

**MISSED APPROACH**  
At OH NDB, climb via 105DEG from OH NDB to 3,000ft, then turn left proceed to OH NDB within 10nm of OH NDB and hold at 3,000ft (4,200ft for JET).

MINIMA		THR elev. 280	AD elev. 281	
CAT			CIRCLING	
	MDA(H)	CMV	MDA(H)	VIS
A	960 (679)	1500	960 (679)	1600
B		2000		2400
C	-		-	
D	-	-	-	-