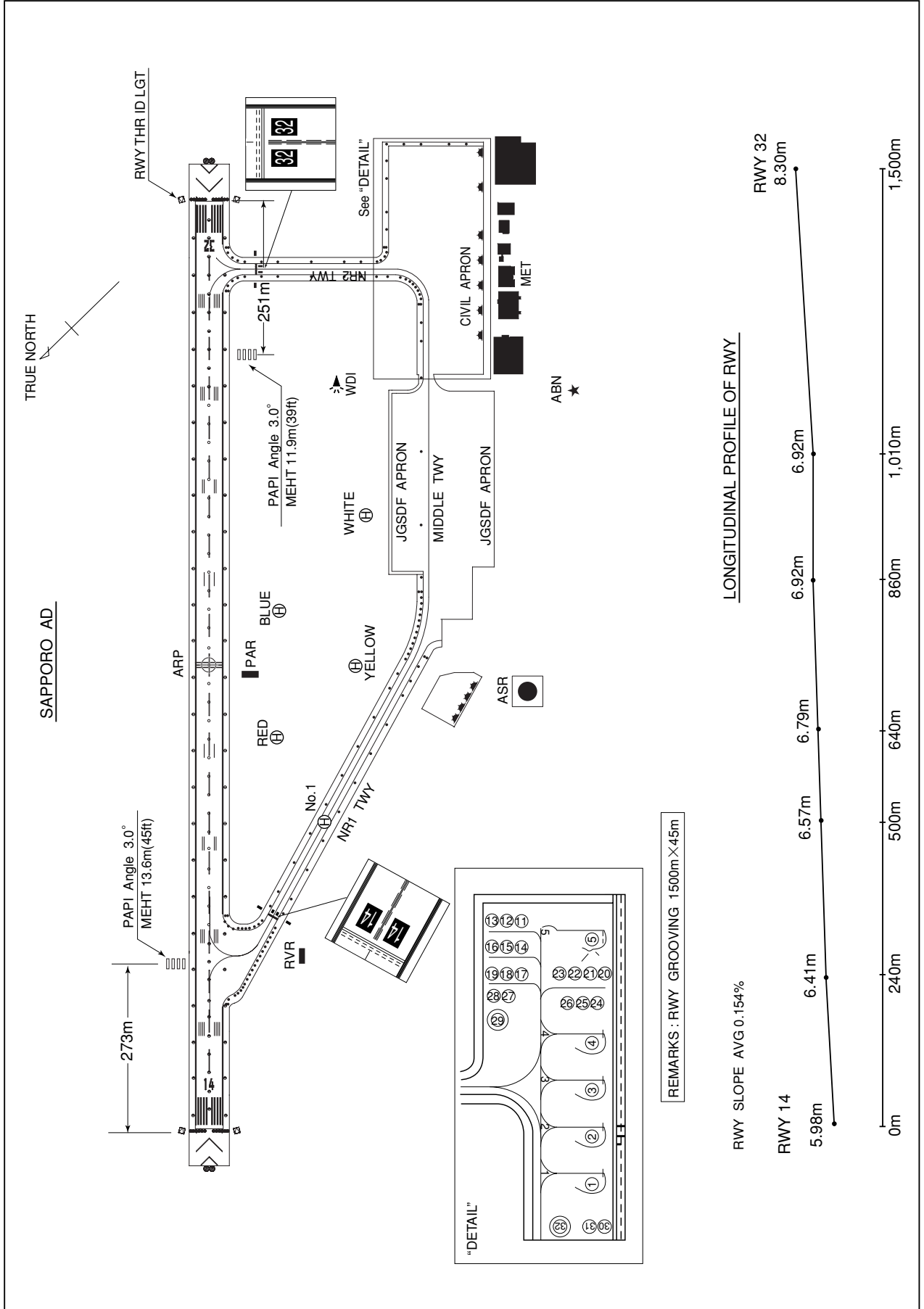


RJCO / SAPPORO

AD CHART



STANDARD DEPARTURE CHART - INSTRUMENT

RJCO / SAPPORO

SID

KURIS THREE DEPARTURE

RWY 14: Turn left,....

RWY 32: Turn right,....

....Climb via HDG 057° to intercept and proceed via SPE R103 to KURIS.

Cross KURIS at or above 5000FT.

SAPPORO REVERSAL FOUR DEPARTURE

RWY 14: Turn left,....

RWY 32:

....Climb to SPE VOR/DME, via SPE R335, turn left to intercept and proceed via SPE R310 to SPE VOR/DME within SPE 15.0DME.

Cross SPE R335/6.0DME at or below 6000FT,
cross SPE R310/6.0DME at or above 10000FT.SAPPORO THREE DEPARTURE

RWY 14: Turn left,....

RWY 32:

....Climb to SPE VOR/DME.

RUMOI TRANSITION

From over SPE VOR/DME, climb via SPE R040 to RUMOI.

Cross SPE R040/8.0DME at or above 4000FT, cross RUMOI at assigned altitude.

BEEBA TRANSITION

From over SPE VOR/DME, climb via SPE R069 to BEEBA.

Cross BEEBA at assigned altitude.

MOIWA TRANSITIONFrom over SPE VOR/DME, climb via SPE R325 to 3000FT or above,
turn left to intercept and proceed via SPE R203 to MOIWA.

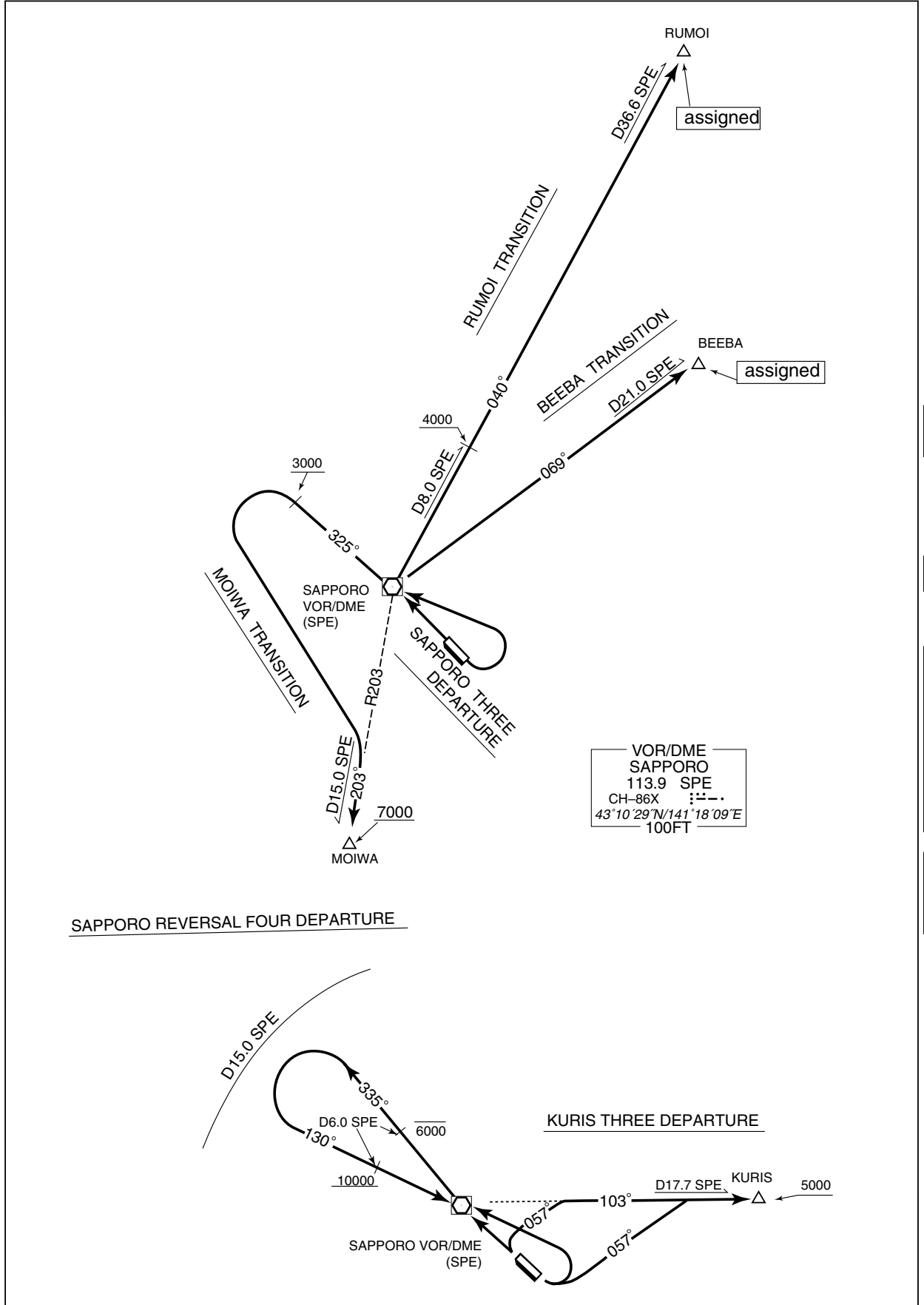
Cross MOIWA at or above 7000FT.

Note: Do not start left turn to MOIWA before SPE VOR/DME.

STANDARD DEPARTURE CHART - INSTRUMENT

RJCO / SAPPORO

SID



STANDARD DEPARTURE CHART - INSTRUMENT

RJCO / SAPPORO

SID

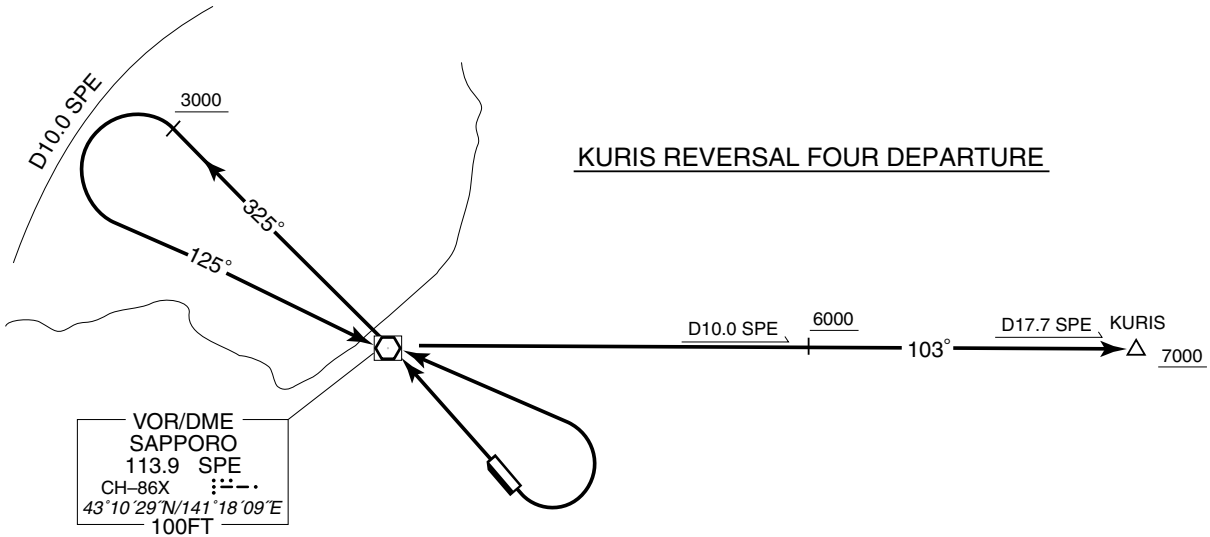
KURIS REVERSAL FOUR DEPARTURE

RWY 14 : Turn left,....

RWY 32 :

....climb direct to SPE VOR/DME, via SPE R325 until passing 3000 FT, turn left to intercept and proceed via SPE R305 to SPE VOR/DME within SPE 10.0DME, via SPE R103 to KURIS.

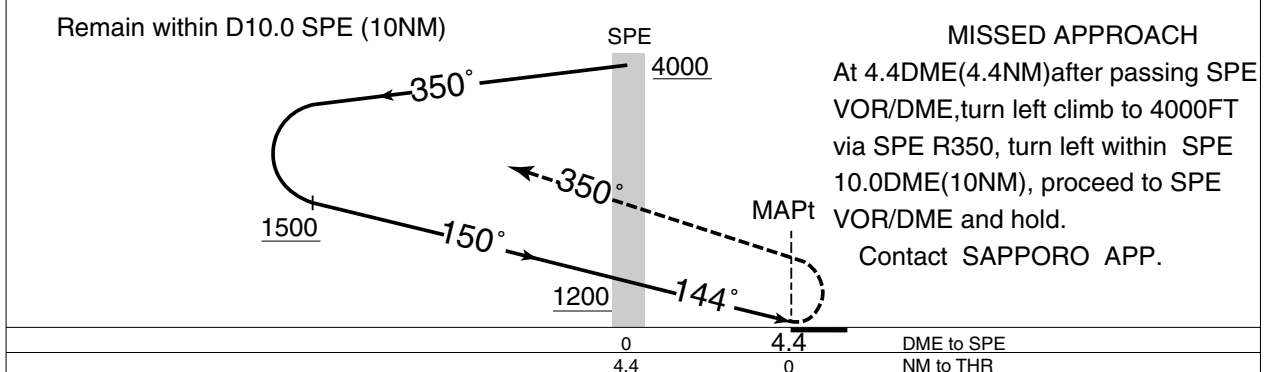
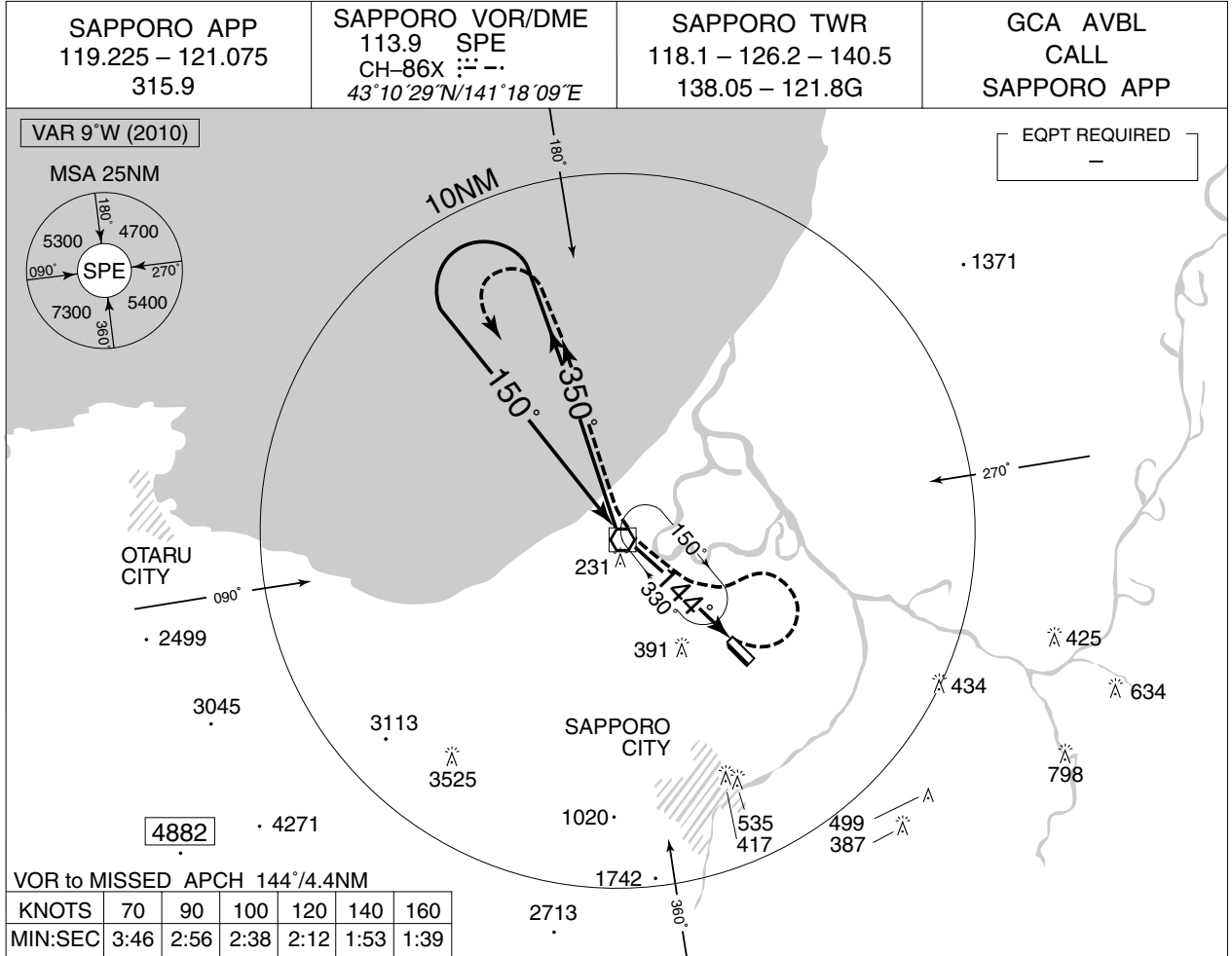
Cross SPE R103/10.0DME at or above 6000FT,
cross KURIS at or above 7000FT.



INSTRUMENT APPROACH CHART

RJCO / SAPPORO

VOR RWY14



MINIMA	THR elev. 20	AD elev. 26		
CAT	CIRCLING			
	MDA(H)	RVR/ CMV	MDA(H)	VIS
A	600 (574)	1500	600 (574)	1600
B		2000		2400
C		—		—
D	—	—	—	—

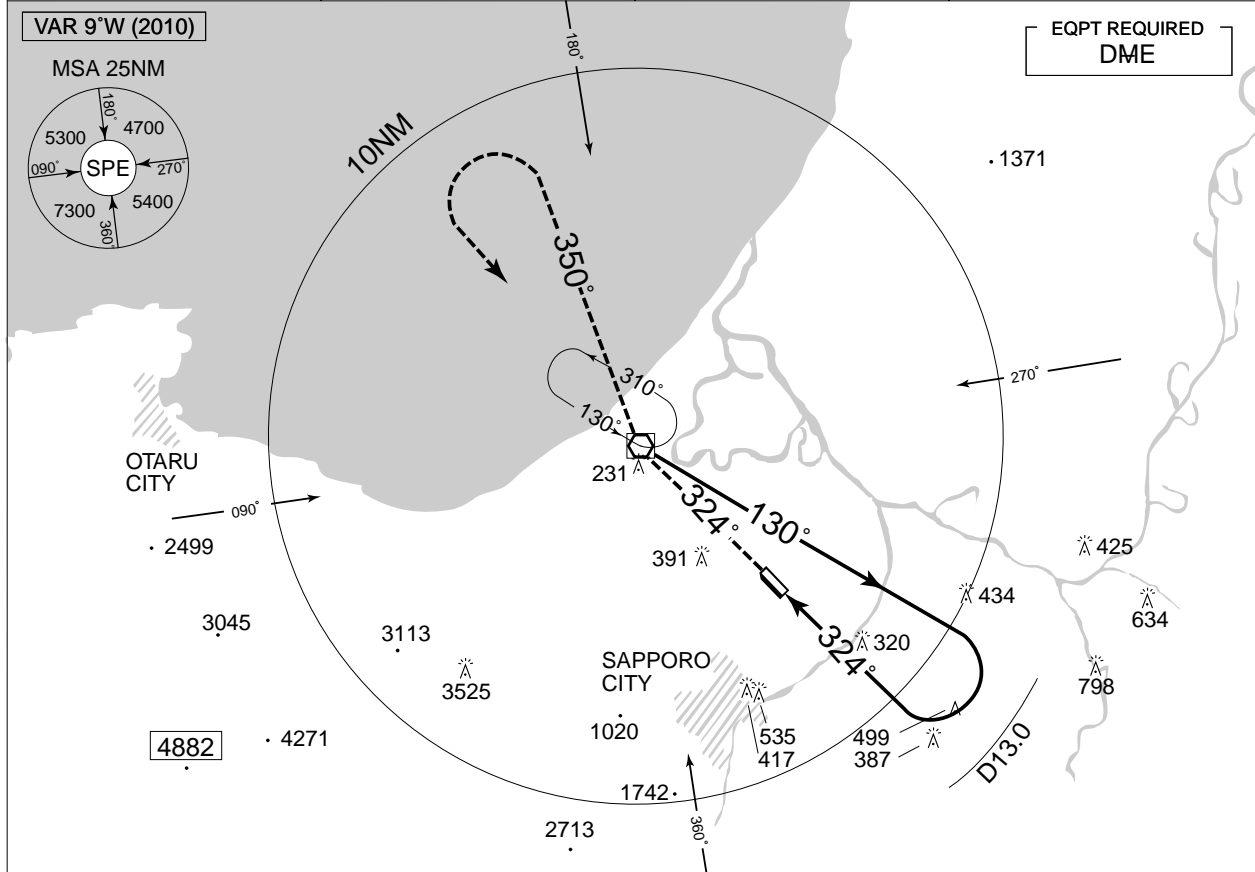
Circling to EAST side of RWY only.

INSTRUMENT APPROACH CHART

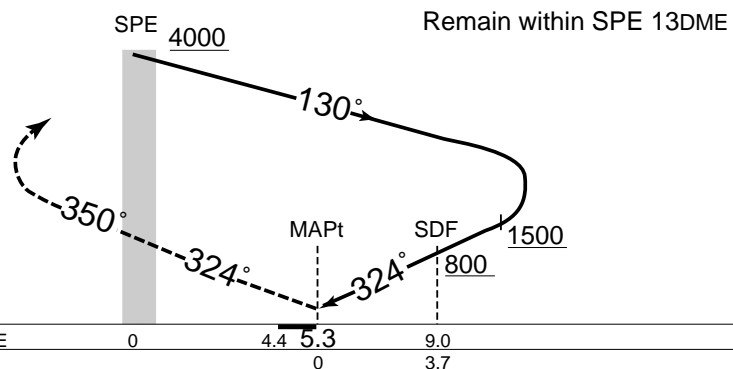
RJCO / SAPPORO

VOR RWY32

SAPPORO APP 119.225 – 121.075 315.9	SAPPORO VOR/DME 113.9 SPE $\dashv\vdash\vdash\vdash$ CH-86X 43°10'29"N/141°18'09"E	SAPPORO TWR 118.1 – 126.2 – 140.5 138.05 – 121.8G	GCA AVBL CALL SAPPORO APP
---	---	---	---------------------------------



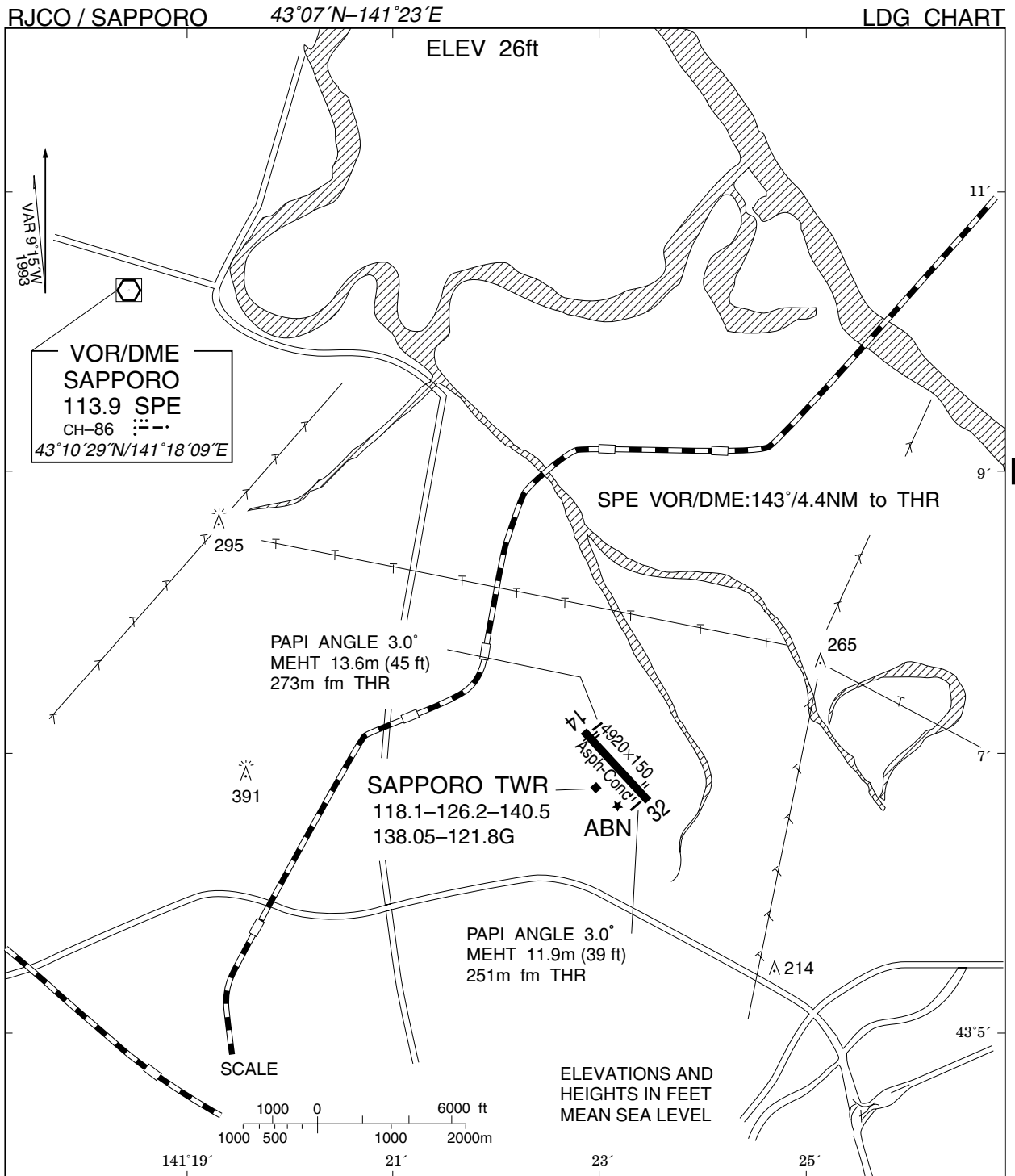
MISSED APPROACH
At 5.3DME prior to SPE VOR/DME climb to 4000FT via SPE R144 then SPE R350, turn left within SPE 10.0DME, proceed to SPE VOR/DME and hold. Contact SAPPORO APP.



MINIMA		THR elev. 27	AD elev. 26	
CAT	CIRCLING		MDA(H)	VIS
	MDA(H)	CMV		
A	620 (594)	1500	620 (594)	1600
B				
C		2000		
D	—	—	—	—

Circling to EAST side of RWY only.

LDG CHART



札幌進入管制区

Sapporo Approach Control Area

