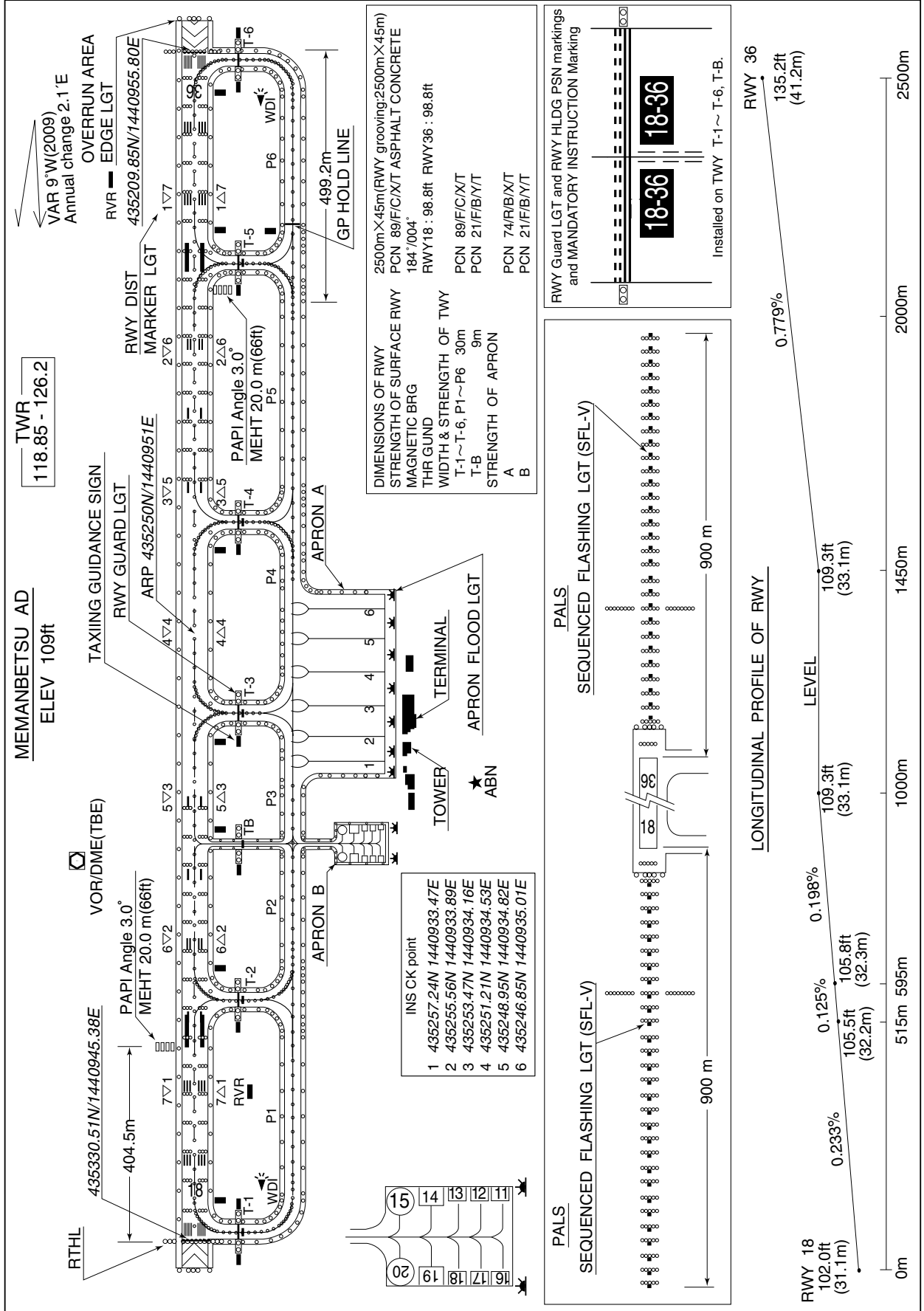


RJCM / MEMANBETSU

AD CHART



STANDARD DEPARTURE CHART -INSTRUMENT

RJCM / MEMANBETSU

SID

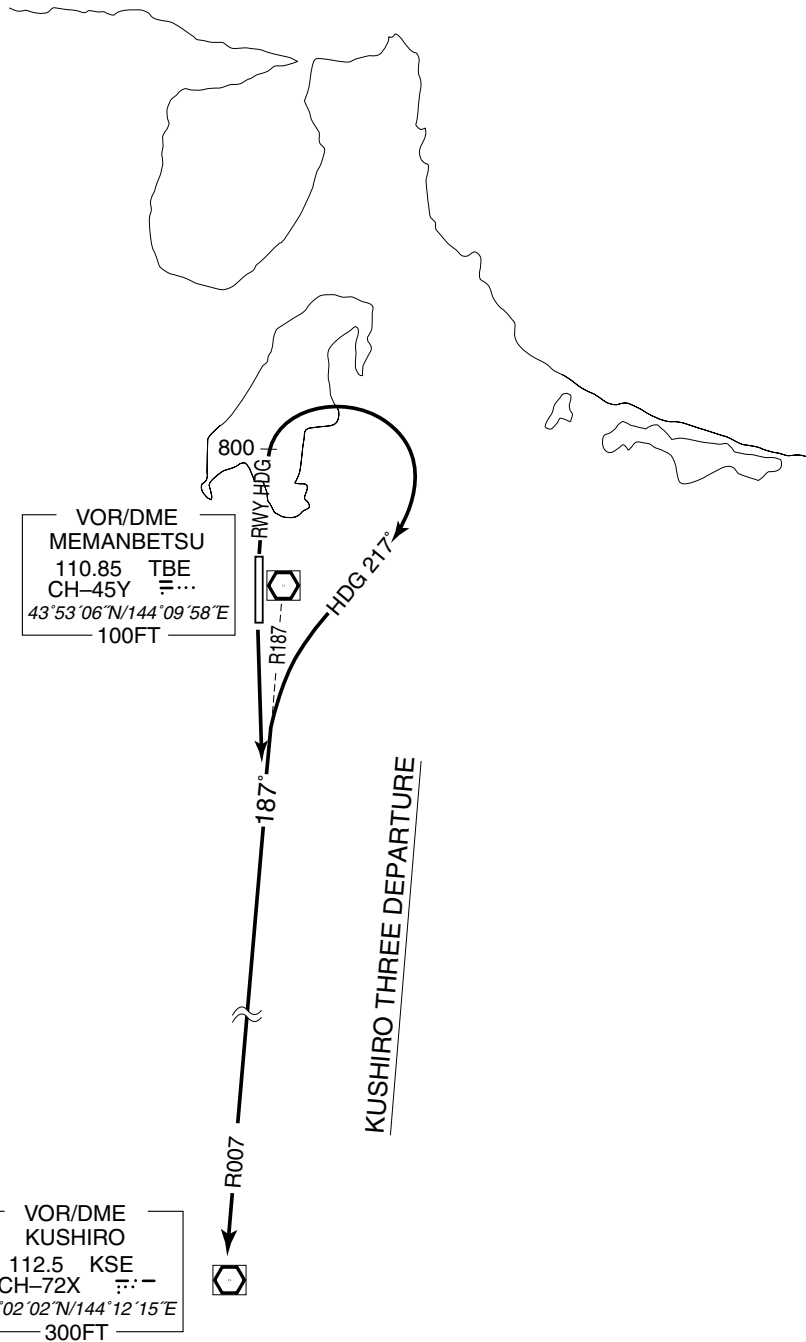
KUSHIRO THREE DEPARTURE

RWY 18 : Climb via TBE R187/KSE R007 to KSE VOR/DME.

RWY 36 : Climb RWY HDG to 800FT, turn right HDG 217° to intercept and proceed via TBE R187/KSE R007 to KSE VOR/DME.

Note RWY18 : 3.9% climb gradient required up to 4500FT.

OBST ALT 3281FT located at 17.0NM 179° FM end of RWY18.



STANDARD DEPARTURE CHART-INSTRUMENT

RJCM / MEMANBETSU

SID

EATAK THREE DEPARTURE

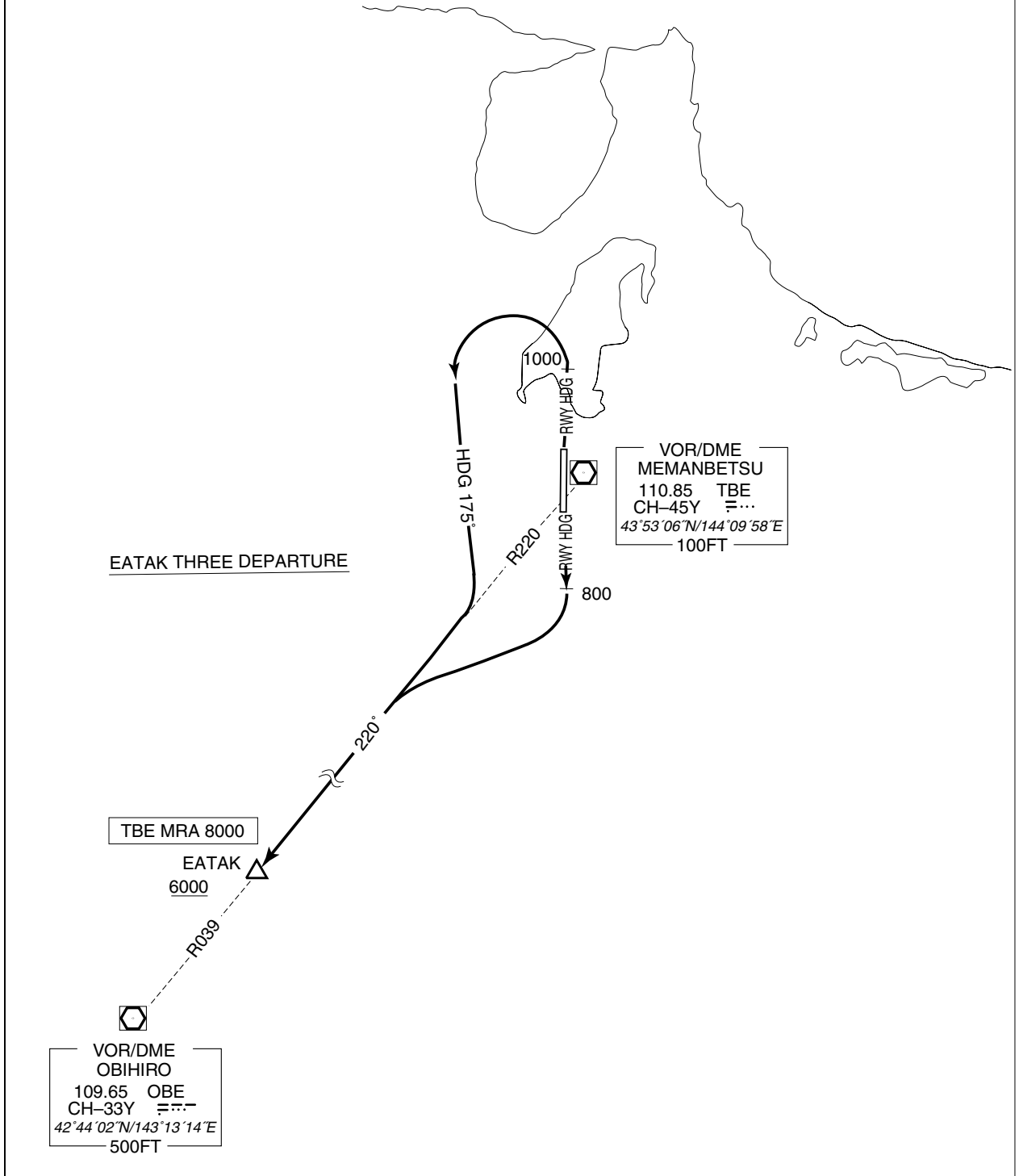
RWY 18 : Climb RWY HDG to 800FT, turn right climb via TBE R220/OBE R039 to EATAK....

RWY 36 : Climb RWY HDG to 1000FT, turn left HDG 175° to intercept and proceed via TBE R220/OBE R039 to EATAK....

....Cross EATAK at or above 6000FT.

Note RWY36 : 3.9% climb gradient required up to 2000FT.

OBST ALT 1181FT located at 4.5NM 290° FM end of RWY36.



STANDARD DEPARTURE CHART-INSTRUMENT

RJCM / MEMANBETSU

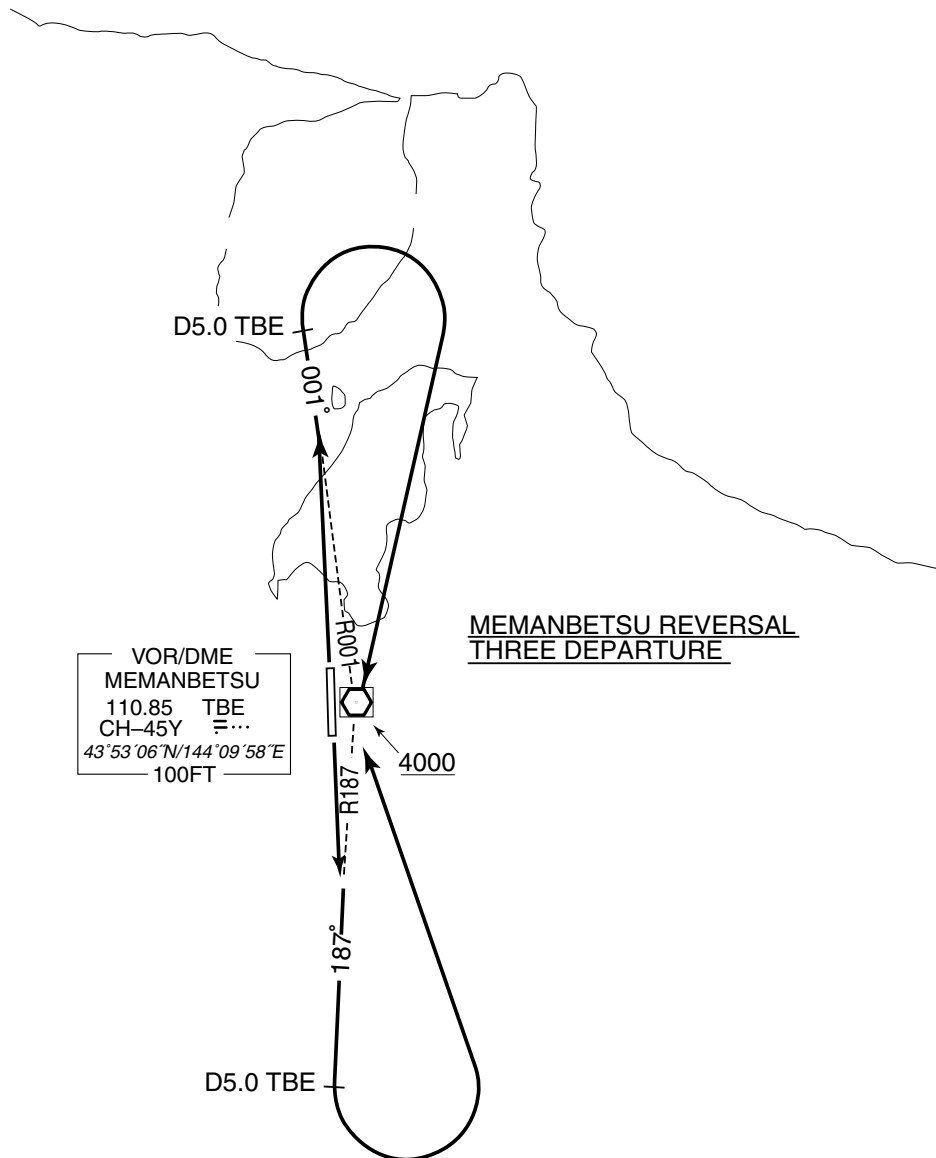
SID

MEMANBETSU REVERSAL THREE DEPARTURE

RWY 18 : Climb via TBE R187 to TBE 5.0DME, turn left....

RWY 36 : Climb via TBE R001 to TBE 5.0DME, turn right,....

....Proceed to TBE VOR/DME. Cross TBE VOR/DME at or above 4000FT.



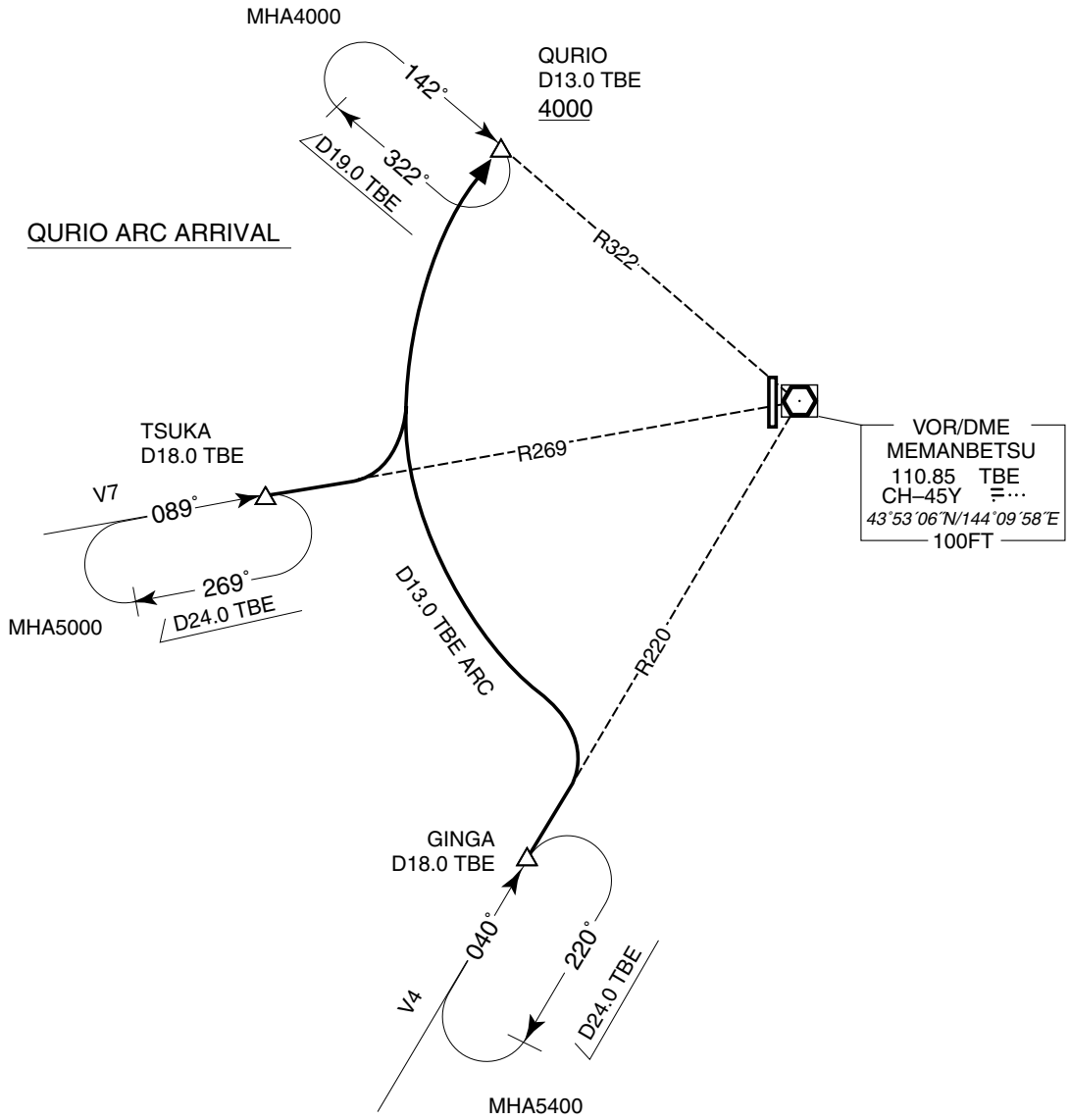
STANDARD ARRIVAL CHART-INSTRUMENT

RJCM / MEMANBETSU

STAR

QURIO ARC ARRIVAL

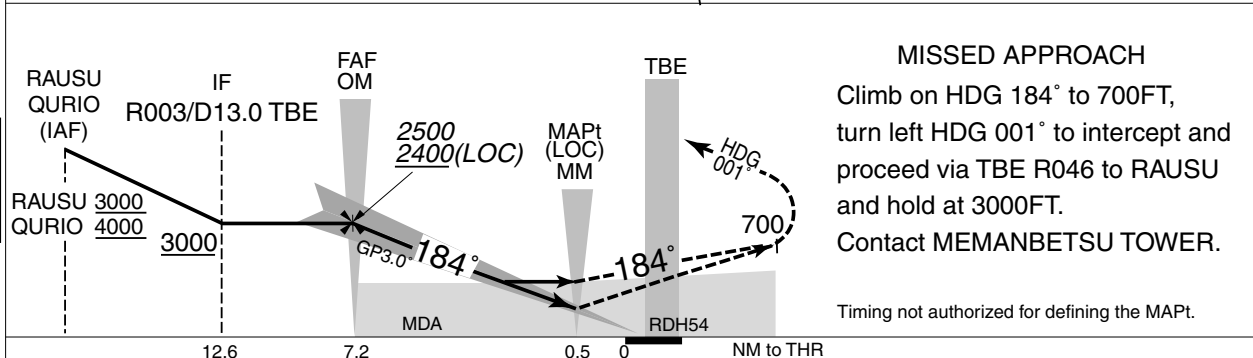
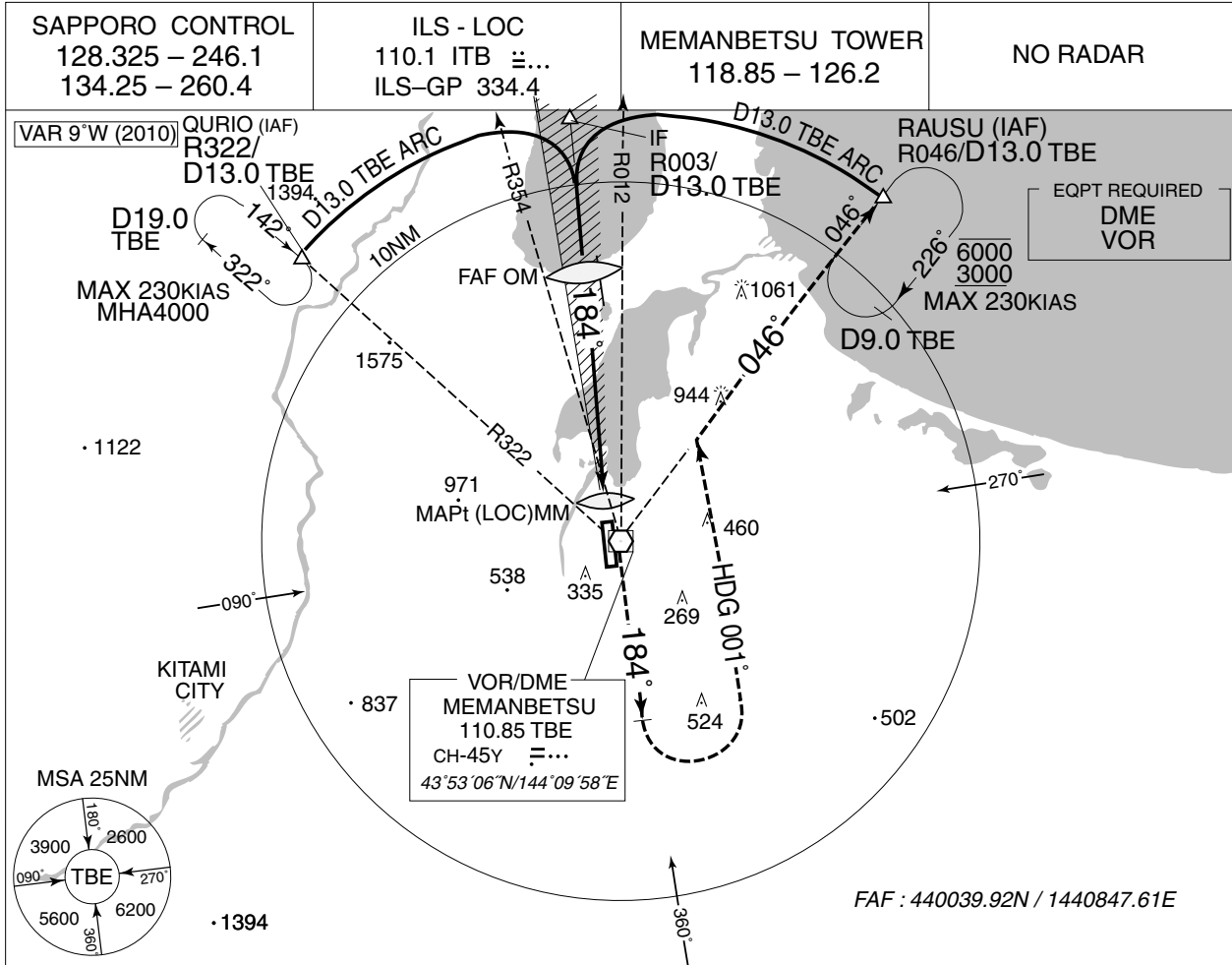
From over GINGA, TSUKA, turn left via TBE 13.0DME clockwise ARC to QURIO.
Cross QURIO at or above 4000FT.



INSTRUMENT APPROACH CHART

RJCM / MEMANBETSU

ILS Z or LOC Z RWY18

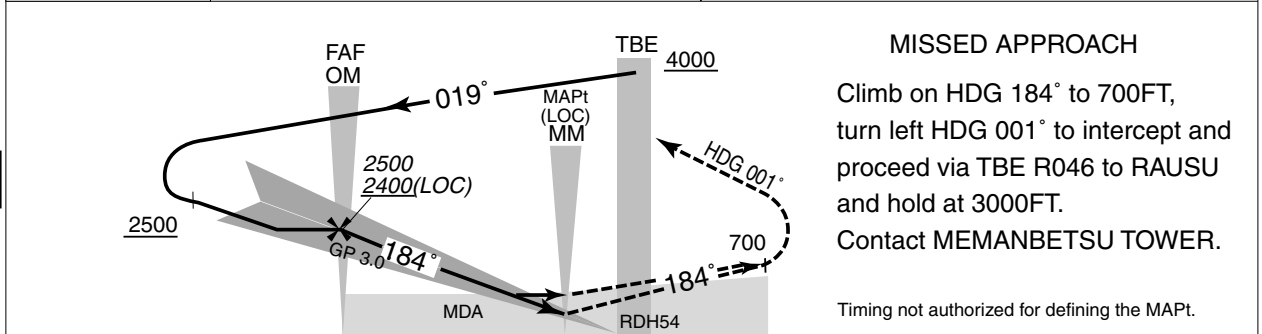
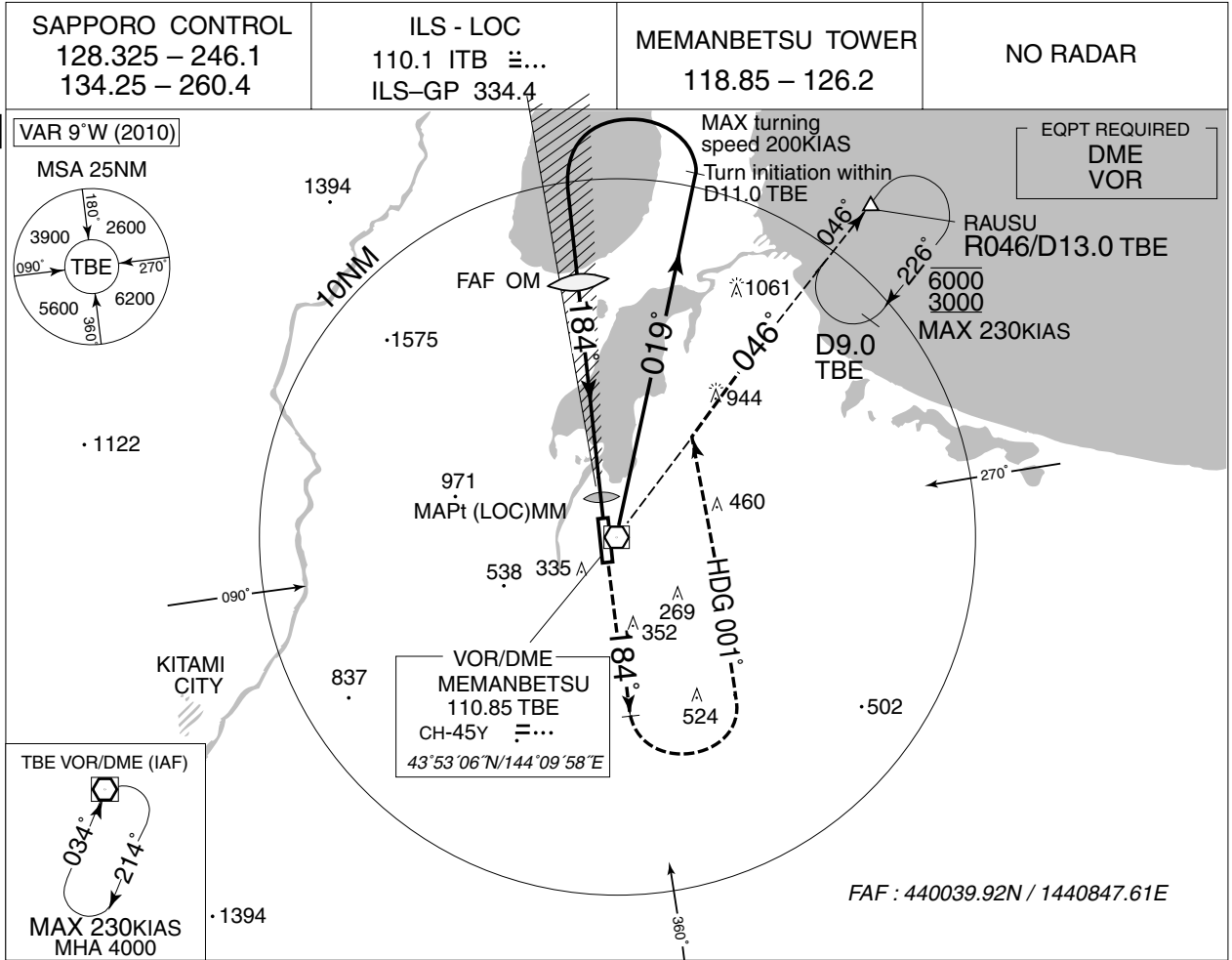


MINIMA		THR elev. 102		AD elev. 109		
CAT	CAT I		LOC		CIRCLING	
	DA(H)	RVR/CMV	MDA(H)	RVR/CMV	MDA(H)	VIS
A	302 (200)	550	450 (341)	900	640 (531)	1600
B				1000		
C				1400	750 (641)	2400
D				1400	760 (651)	3200

INSTRUMENT APPROACH CHART

RJCM / MEMANBETSU

ILS Y or LOC Y RWY18



MISSED APPROACH
Climb on HDG 184° to 700FT,
turn left HDG 001° to intercept and
proceed via TBE R046 to RAUSU
and hold at 3000FT.
Contact MEMANBETSU TOWER.
Timing not authorized for defining the MAPt.

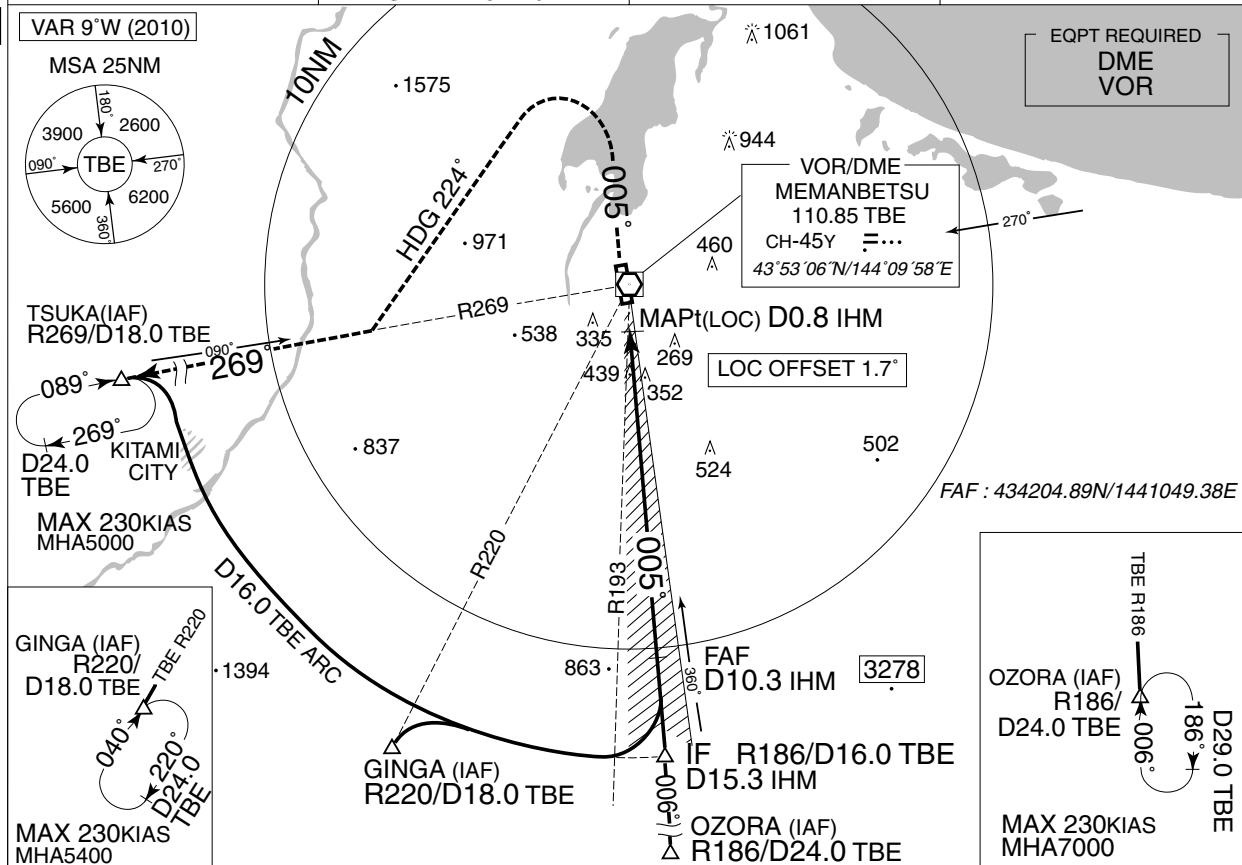
MINIMA		THR elev. 102		AD elev. 109		
CAT	CAT I		LOC		CIRCLING	
	DA(H)	RVR/CMV	MDA(H)	RVR/CMV	MDA(H)	VIS
A	302 (200)	550	450 (341)	900	640 (531)	1600
B				1000		
C				1400	750 (641)	2400
D				1400	760 (651)	3200

INSTRUMENT APPROACH CHART

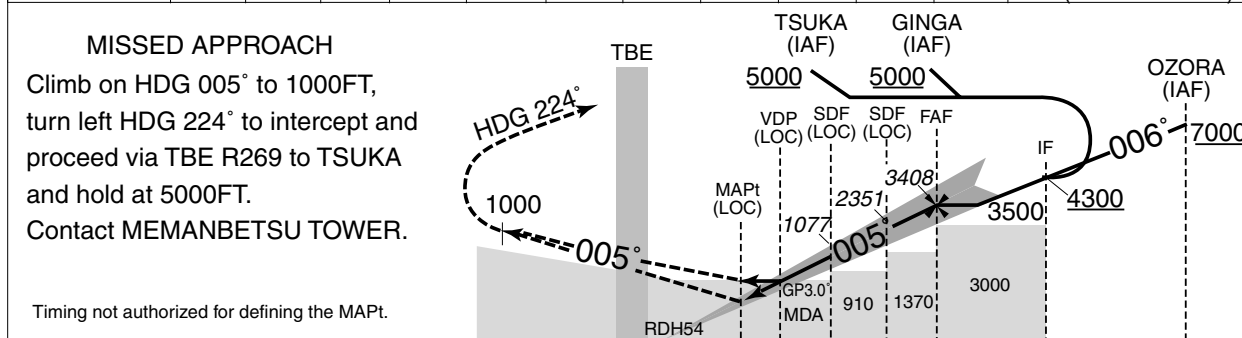
RJCM / MEMANBETSU

ILS or LOC RWY36

SAPPORO CONTROL 128.325 – 246.1 134.25 – 260.4	ILS - LOC 110.3 IHM ILS - GP 335 ILS - DME CH-40X	MEMANBETSU TWR 118.85 – 126.2	NO RADAR
--	--	----------------------------------	----------



	MAPt	2	3	4	5	6	7	8	9	10	FAF	NM to IHM
	-	758	1077	1396	1714	2033	2351	2669	2988	3306	3408	ALT (3.0° APCH Path)



DME to IHM	0.8	1.4	3.0	7.0	10.3	15.3
NM to THR	0	0.6	1.2	2.8	6.8	10.1

Missed APCH climb gradient MNM 3.0%

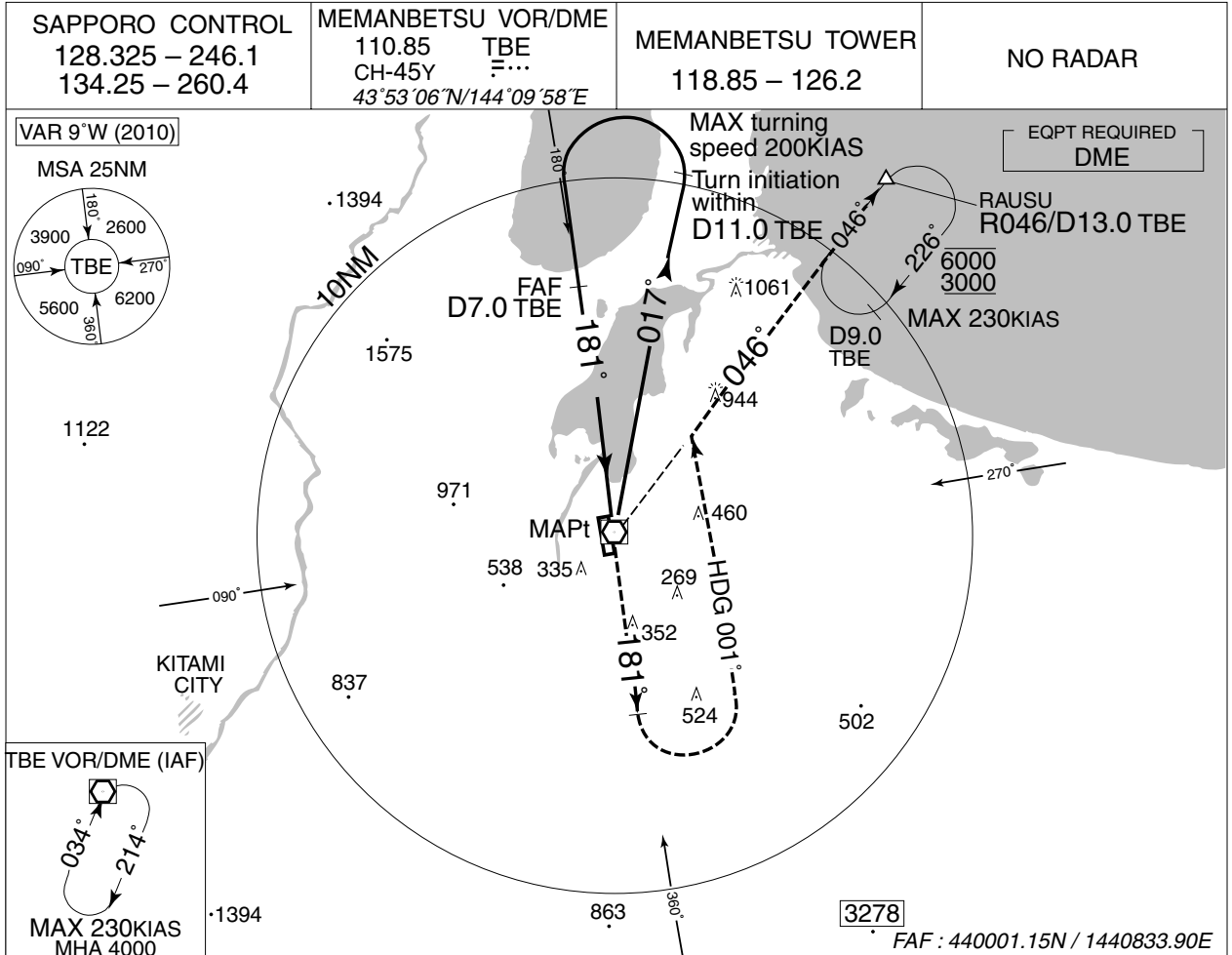
MINIMA	THR elev. 135		AD elev. 109			
CAT	CAT I		LOC		CIRCLING	
	DA(H)	RVR/CMV	MDA(H)	RVR/CMV	MDA(H) VIS	
A	382 (247)	600	540 (431)	900	640 (531) 1600	
B				1000		
C				1400		750 (641) 2400
D				1400		760 (651) 3200

MINIMA with Missed APCH climb gradient of 2.5% are not established.

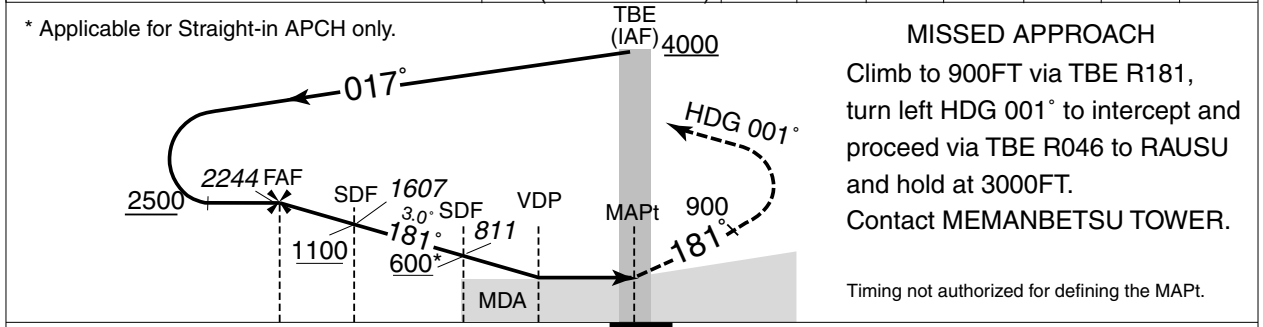
INSTRUMENT APPROACH CHART

RJCM / MEMANBETSU

VOR RWY18



	NM to TBE	FAF	6	5	4	3	2	MAPt
	ALT (3.0° APCH Path)	2244	1926	1607	1289	970	652	-



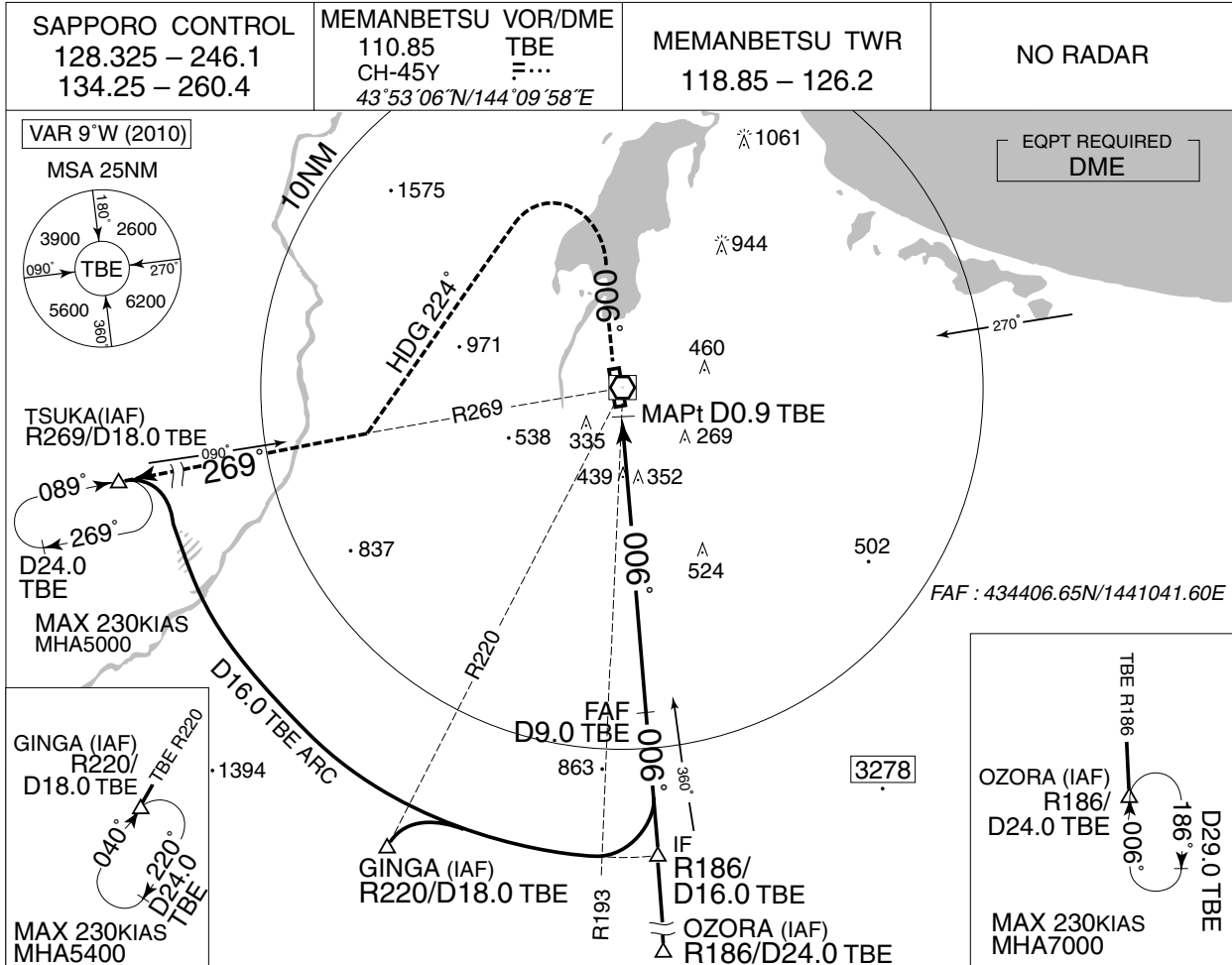
	7.0	5.0	2.5	1.4	0	DME to TBE
	6.6	4.6	2.1	1.0	0	NM to THR

MINIMA		THR elev. 102	AD elev. 109	
CAT			CIRCLING	
	MDA(H)	RVR/CMV	MDA(H)	VIS
A	480 (371)	900	640 (531)	1600
B		1000	750 (641)	2400
C			760 (651)	3200
D		1400		

INSTRUMENT APPROACH CHART

RJCM / MEMANBETSU

VOR RWY36

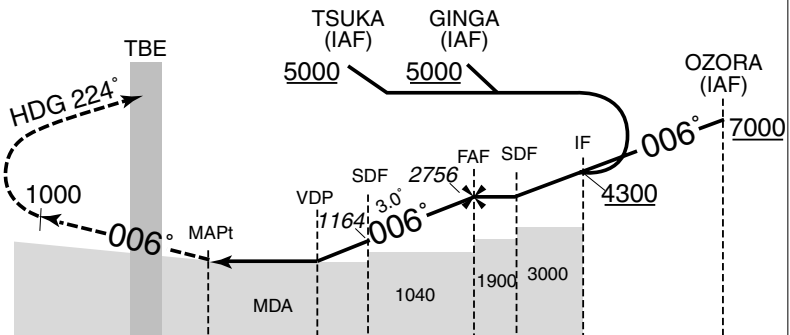


	MAPt	3	4	5	6	7	8	FAF	NM to TBE
		846	1164	1482	1801	2119	2438	2756	ALT (3.0° APCH Path)

MISSED APPROACH

Climb to 1000FT via TBE R006, turn left HDG 224° to intercept and proceed via TBE R269 to TSUKA and hold at 5000FT. Contact MEMANBETSU TOWER.

Timing not authorized for defining the MAPt.



DME to TBE	0.9	2.6	4.0	9.0	13.0	16.0
NM to THR	0	1.7	3.1	8.1	12.1	15.1

MINIMA	THR elev. 135	AD elev. 109			
CAT	CIRCLING				
	MDA(H)	RVR/CMV	MDA(H)	VIS	
A	690 (581)	1000	690 (581)	1600	
B		1200	750 (641)	2400	
C			1600	760 (651)	3200
D					

RJCM / MEMANBETSU

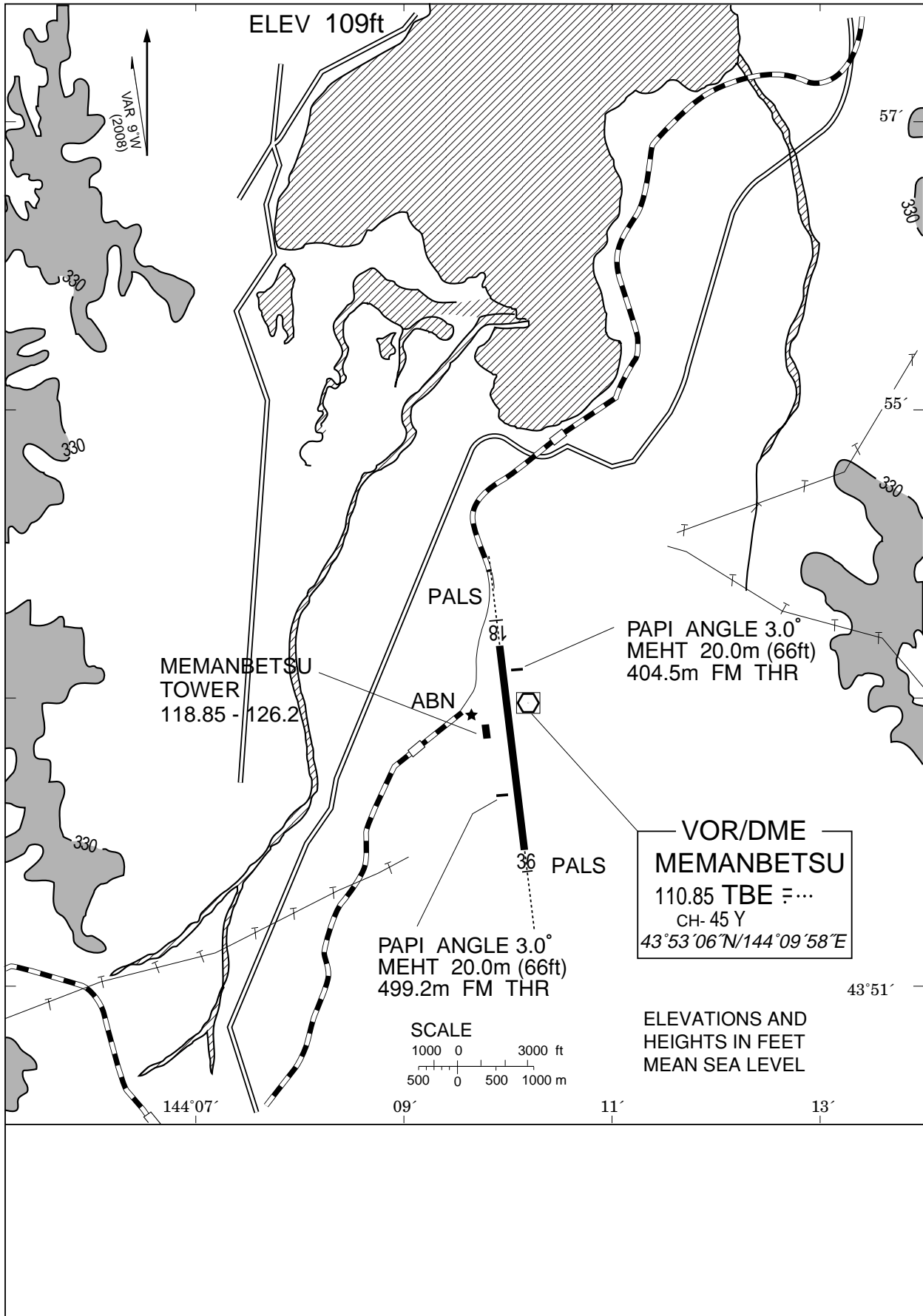
Visual REP



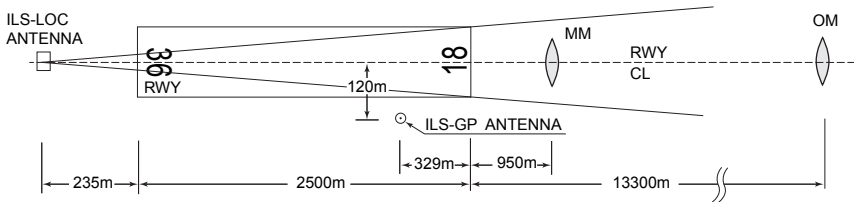
Call sign	BRG / DIST from ARP	Remarks
網走 Abashiri	034°/ 9NM	JR駅 Station
湊沸湖 Tohfutsu-ko	082°/10.5NM	湖 Lake
小清水 Koshimizu	105°/13.3NM	学校 School
東藻琴 Higashimokoto	121°/ 6.1NM	市街地 Town
美幌峠 Bihoro - tohge	173°/14.3NM	峠 Pass
津別 Tsubetsu	221°/11.8NM	市街地 Town
美幌ステーション Bihoro Station	235°/ 3.5NM	JR駅 Station
北見 Kitami	257°/12.5NM	JR駅 Station
浜佐呂間 Hamasaroma	329°/15.3NM	佐呂間大橋 Bridge

RJCM / MEMANBETSU

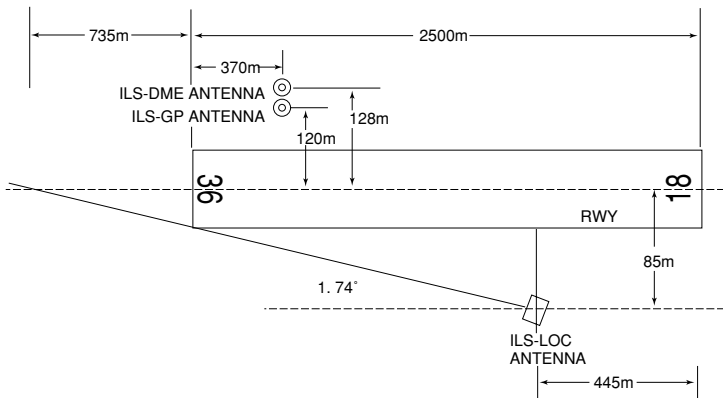
LDG CHART



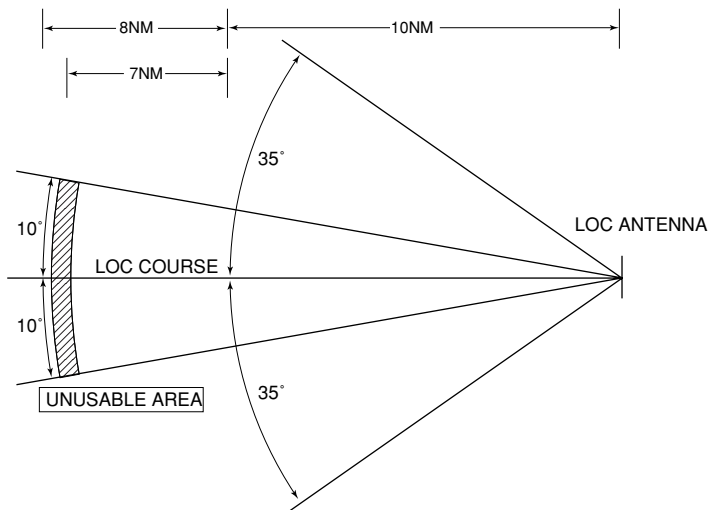
ILS for RWY18



- REMARKS :
- | | |
|-------------------------|-------------|
| 1. LOC beam BRG(MAG) | 184° |
| 2. HGT of ILS REF datum | 16.5m(54ft) |
| 3. GP Angle | 3.0° |

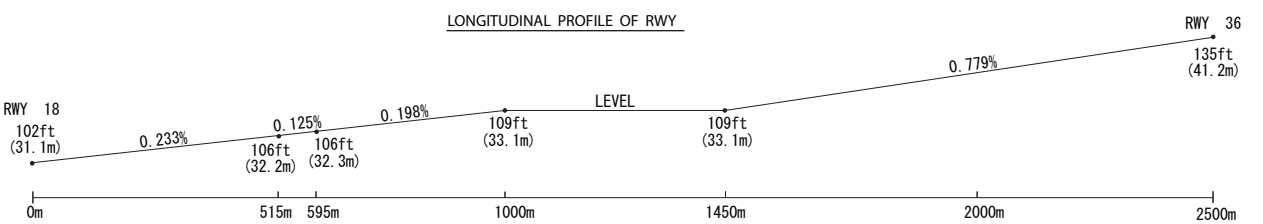
ILS for RWY36MEMANBETSU AP

REMARKS :	1. LOC OFFSET ANGLE	1.74°
	2. LOC beam BRG(MAG)	5°
	3. HGT of ILS REF datum	16.5m(54ft)
	4. GP Angle	3.0°
	5. ELEV of ILS-DME	42.85m (140.5ft)



LOC unusable in the following area : BEY 17NM FM LOC ANT.

LONGITUDINAL PROFILE OF RWY



RWY 18

102ft
(31.1m)

0.233%

106ft
(32.2m)

106ft
(32.3m)

0.125%

0.198%

109ft
(33.1m)

LEVEL

109ft
(33.1m)

0.779%

RWY 36

135ft
(41.2m)

0m

515m

595m

1000m

1450m

2000m

2500m