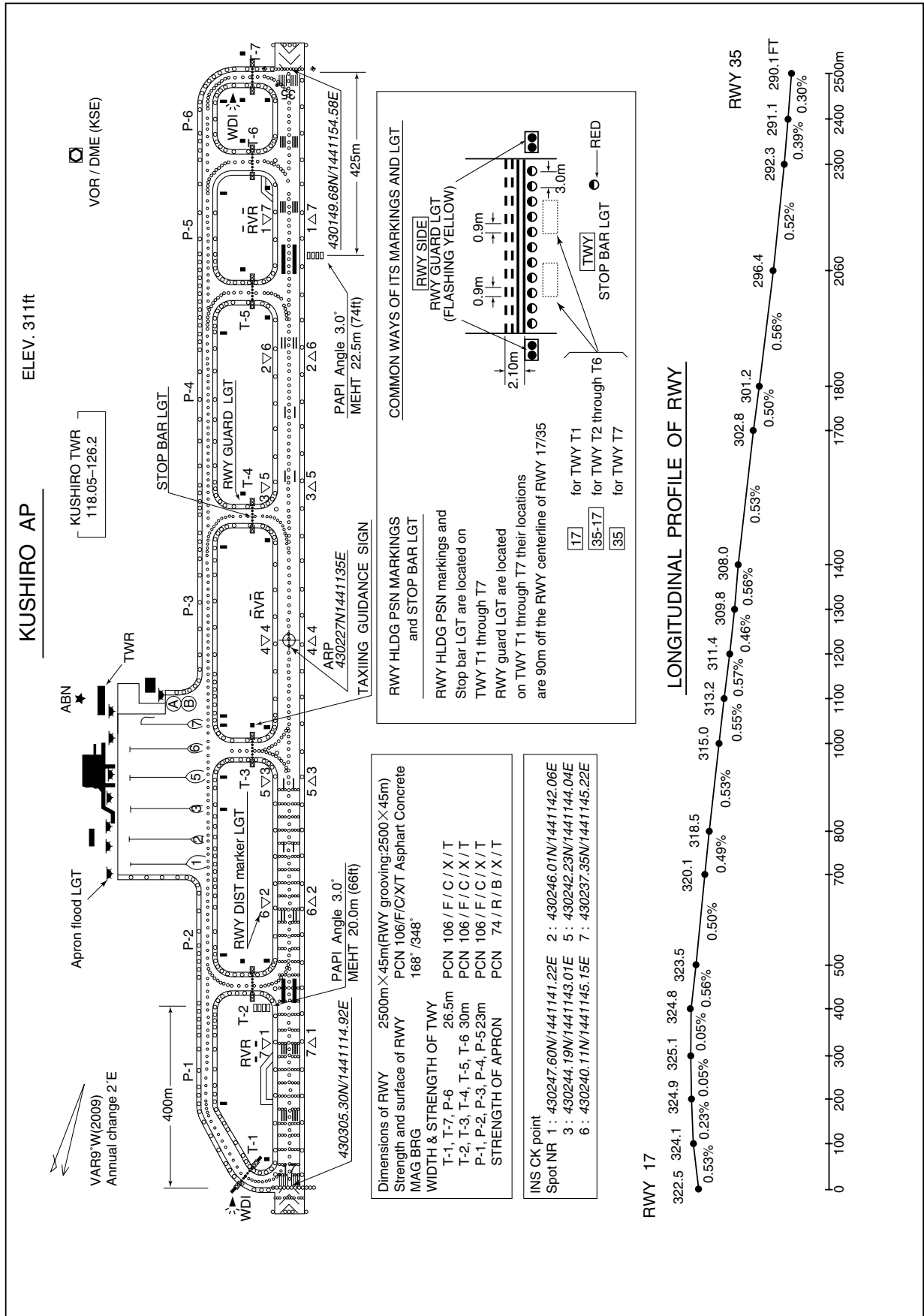


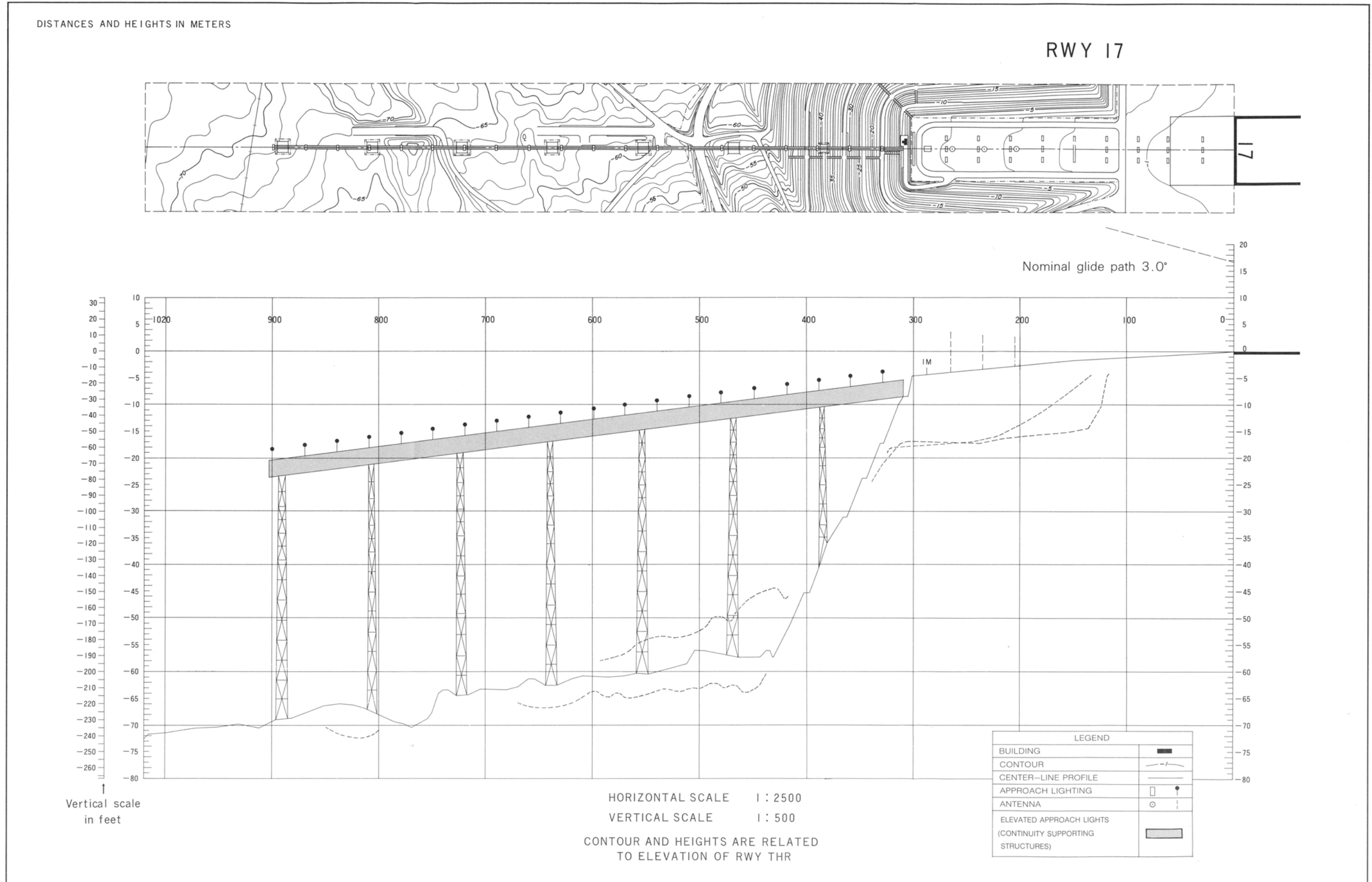
RJCK / KUSHIRO

AD CHART



RJCK/KUSHIRO

PRECISION APPROACH TERRAIN CHART - ICAO



STANDARD DEPARTURE CHART -INSTRUMENT

RJCK / KUSHIRO

SID

ALICE THREE DEPARTURE

RWY17 : Climb RWY HDG until 1,000ft, turn right,....
RWY35 : Climb RWY HDG until 1,000ft, turn left HDG 155DEG,....
...to intercept and proceed via KSE R-200 to ALICE.
Cross ALICE at assigned or specified altitude.

Note : No turn before DER.

ERIMO THREE DEPARTURE

RWY17 : Climb RWY HDG until 1,000ft, turn left,....
RWY35 : Climb RWY HDG until 1,000ft, turn left HDG 116DEG,....
...to intercept and proceed via KSE R-161, via NSE R-218, then via KSE R-200 to ERIMO.

Note 1 : No turn before DER.

Note 2 : NSE R-218/81DME MRA 10,000FT.

OBIHIRO THREE DEPARTURE

RWY17 : Climb RWY HDG until 1,000ft, turn right HDG 266DEG,....
RWY35 : Climb RWY HDG until 1,000ft, turn left HDG 176DEG,....
...to intercept and proceed via KSE R-221, then via OBE R-097 to OBE VOR/DME.

Note : No turn before DER.

KUSHIRO REVERSAL FOUR DEPARTURE

RWY17 : Climb RWY HDG until 1,000ft, turn right,....
RWY35 : Climb RWY HDG until 1,000ft, turn left HDG 155DEG,....
...to intercept and proceed via KSE R-200 to 3,000FT, turn left proceed to KSE VOR/DME.
Cross KSE VOR/DME at or above 5,000ft.

Note : No turn before DER.

YUDOH TWO DEPARTURE

RWY17 : Climb RWY HDG until 1,000ft, turn right HDG 266DEG,....
RWY35 : Climb RWY HDG until 1,000ft, turn left HDG 176DEG,....
...to intercept and proceed via KSE R-221 to YUDOH.

Note : No turn before DER.

EATAK ONE DEPARTURE

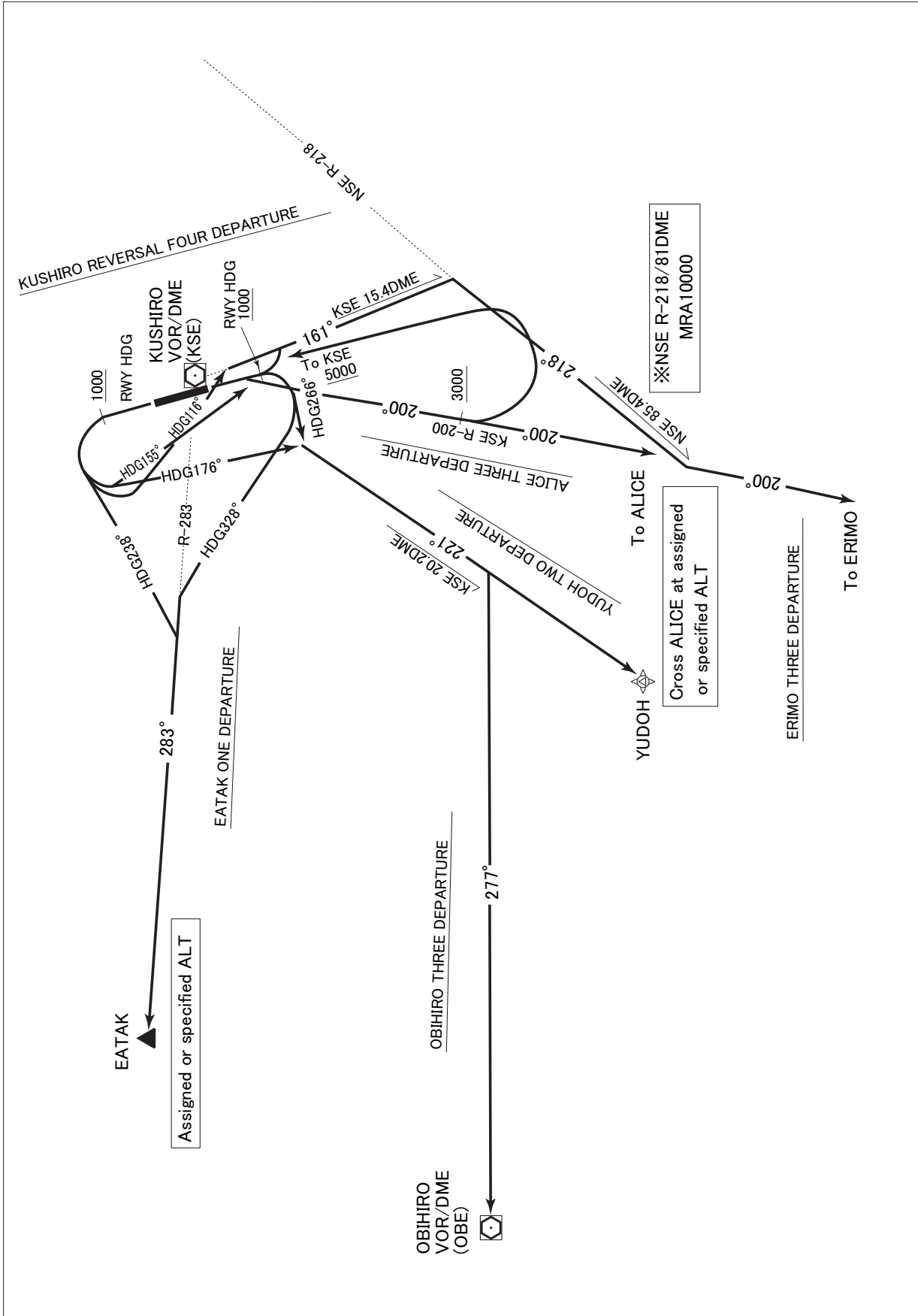
RWY17 : Climb RWY HDG until 1,000ft, turn right HDG 328DEG,....
RWY35 : Climb RWY HDG until 1,000ft, turn left HDG 238DEG,....
...to intercept and proceed via KSE R-283 to EATAK.
Cross EATAK at assigned or specified altitude.

Note : No turn before DER.

STANDARD DEPARTURE CHART -INSTRUMENT

RJCK / KUSHIRO

SID



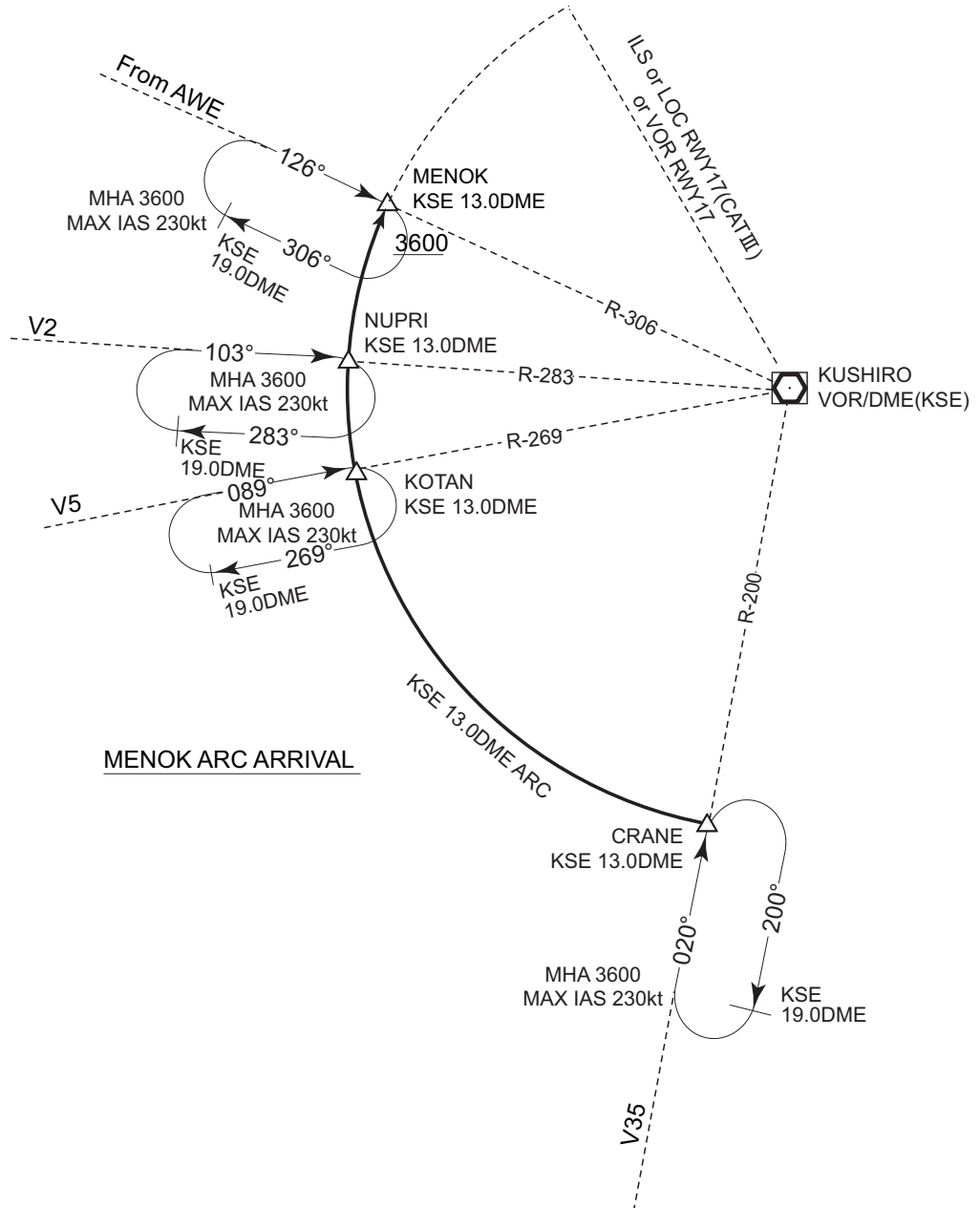
STANDARD ARRIVAL CHART -INSTRUMENT

RJCK / KUSHIRO

STAR

MENOK ARC ARRIVAL

From over CRANE, KOTAN, NUPRI, via KSE 13.0DME clockwise ARC to MENOK.
Cross MENOK at or above 3,600ft.



MENOK ARC ARRIVAL

STANDARD ARRIVAL CHART -INSTRUMENT

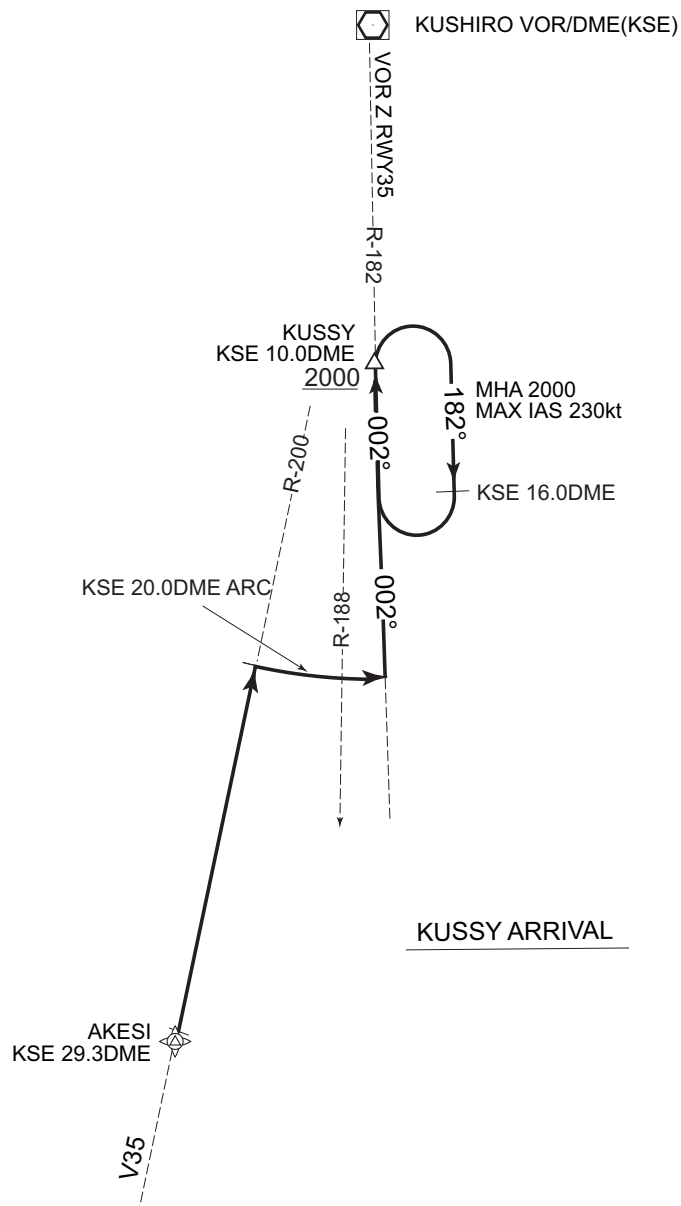
RJCK / KUSHIRO

STAR

KUSSY ARRIVAL

From over AKESI, via KSE R-200 to intercept and proceed via KSE 20.0DME counterclockwise ARC, then via KSE R-182 to KUSSY.

Cross KUSSY at or above 2,000ft.



STANDARD ARRIVAL CHART -INSTRUMENT

RJCK / KUSHIRO

STAR

KUSSY ARC ARRIVAL

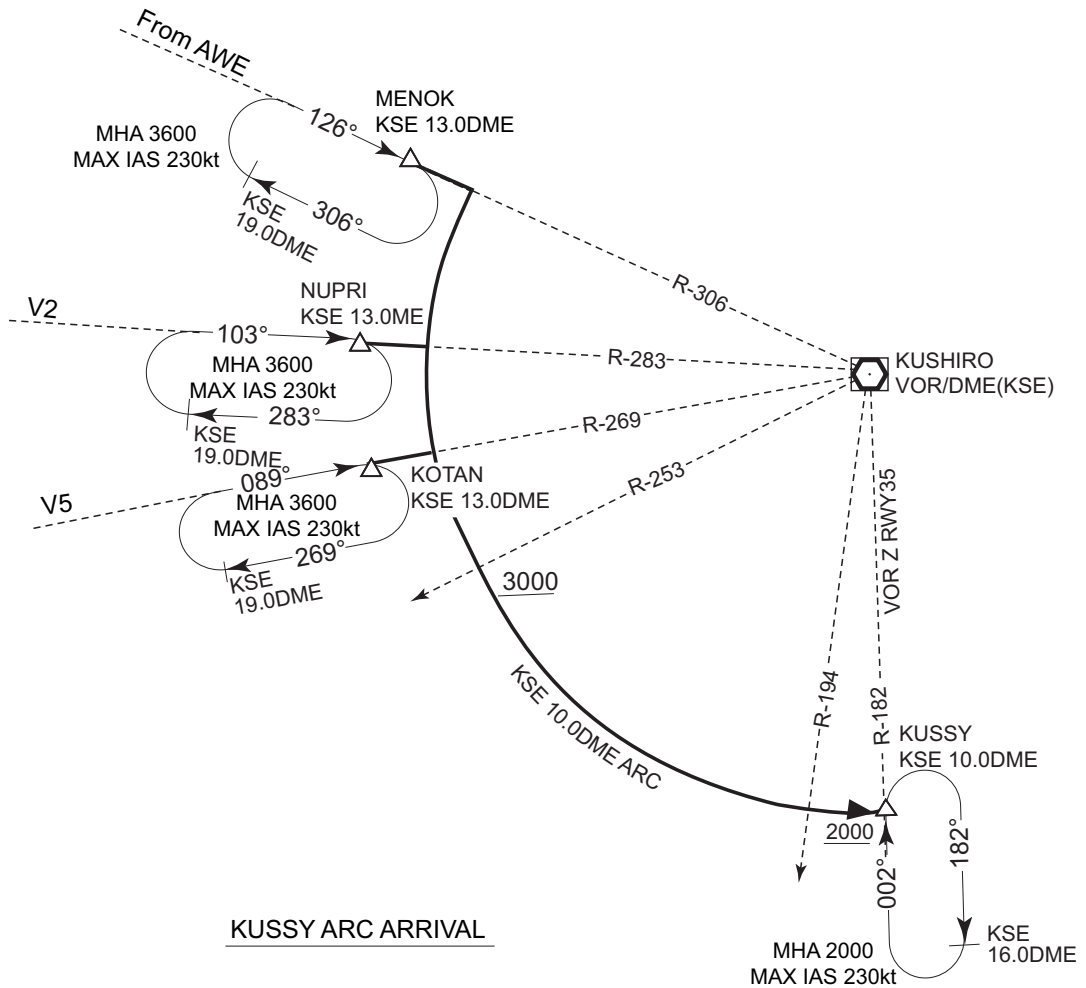
From over MENOK, via KSE R-306...

From over NUPRI, via KSE R-283...

From over KOTAN, via KSE R-269...

...to intercept and proceed via KSE 10.0DME counterclockwise ARC to KUSSY.

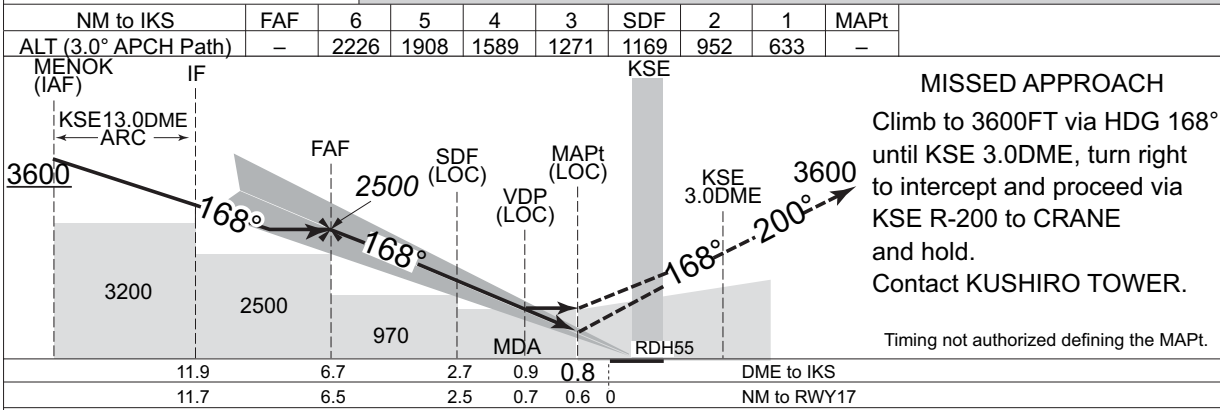
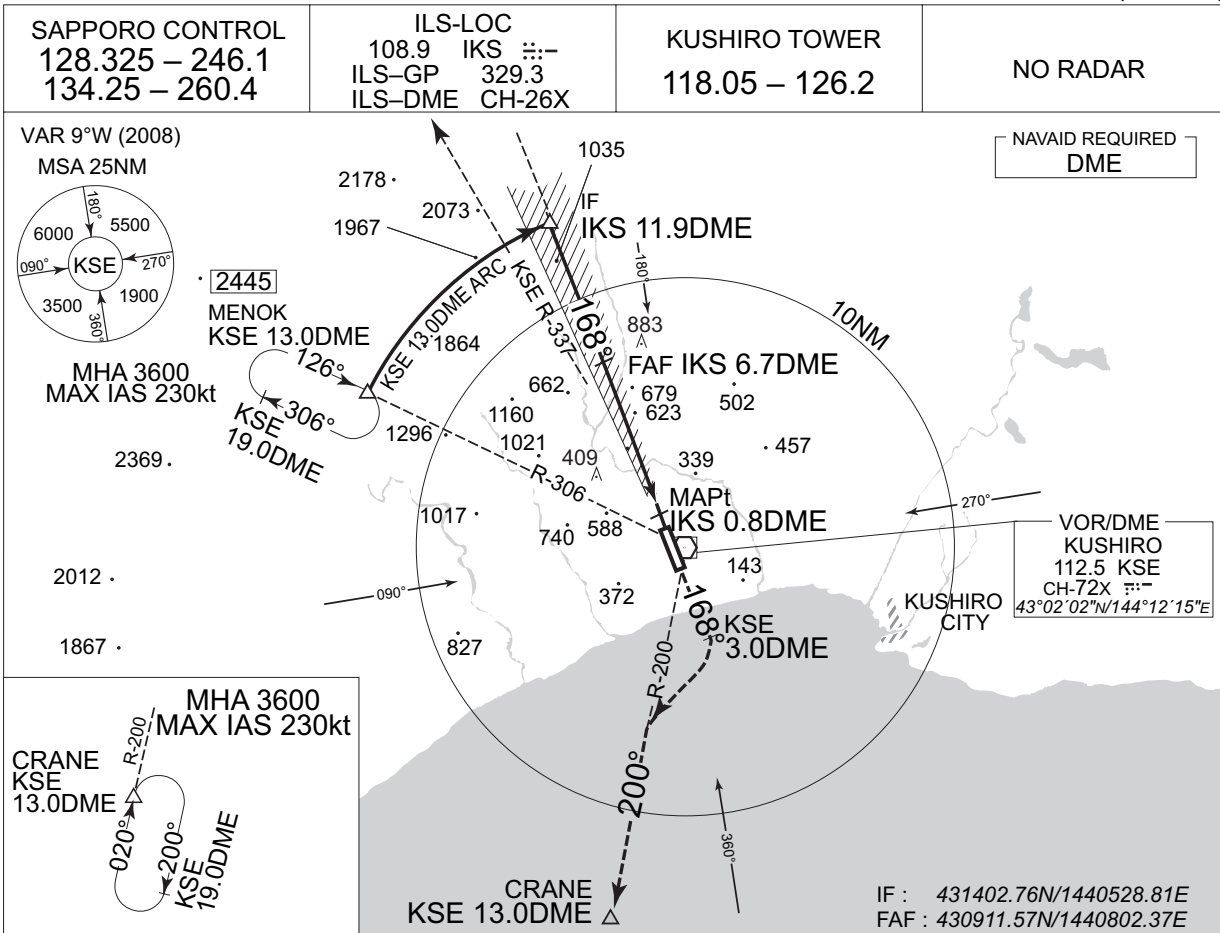
Cross KSE R-253 at or above 3,000ft, cross KUSSY at or above 2,000ft.



INSTRUMENT APPROACH CHART

RJCK / KUSHIRO

ILS or LOC RWY17 (CAT III)



11.9	6.7	2.7	0.9	0.8						
11.7	6.5	2.5	0.7	0.6	0					

MINIMA		THR elev. 323			AD elev. 311							
CAT	CAT III B	CAT III A	CAT II			CAT I		LOC		CIRCLING		
	RVR	RVR	DA(H)	RA	RVR	DA(H)	RVR/CMV	MDA(H)	RVR/CMV	MDA(H)	VIS	
A	100	200	Not applicable.			523 (200)	550	590 (279)	800	730 (419)		1600
B										770 (459)		
C										2400		
D										3200		

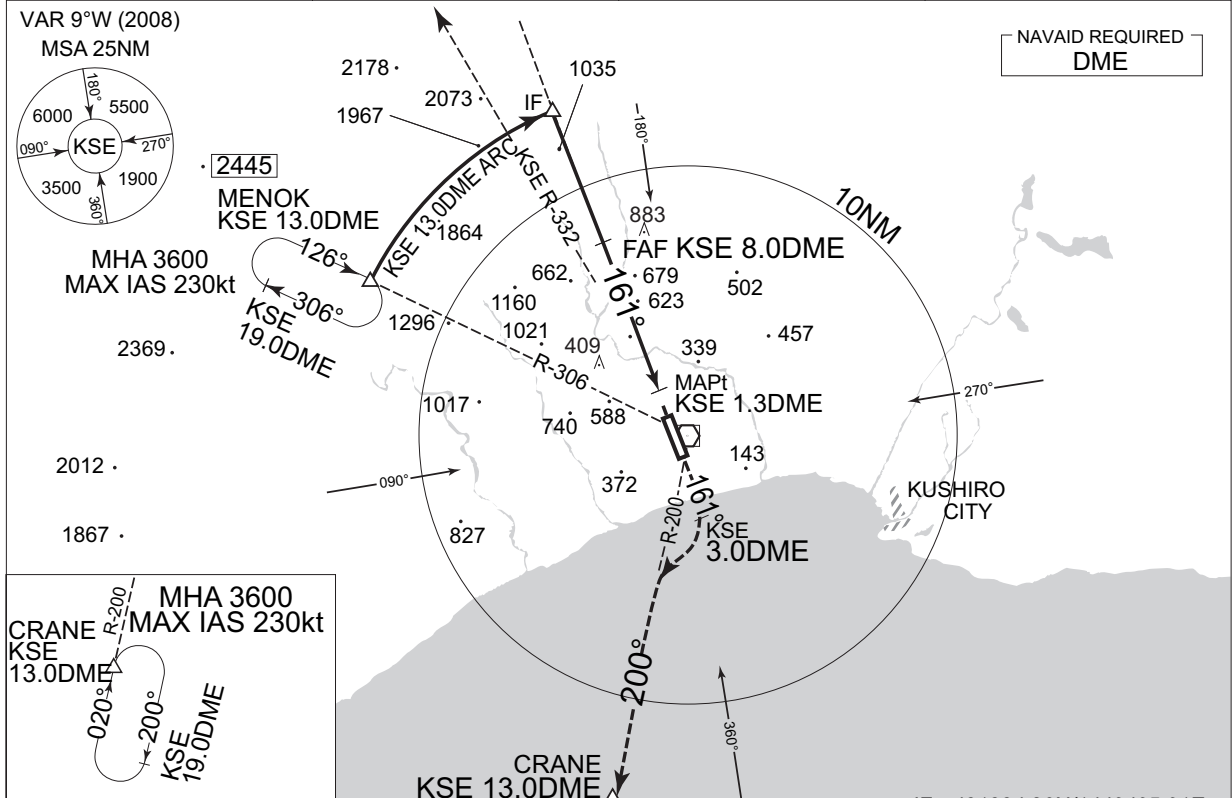
Circling to EAST side of RWY only.
Values of RA may increase or decrease rapidly affected by terrain between IKS 0.4DME and 0.8DME.

INSTRUMENT APPROACH CHART

RJCK / KUSHIRO

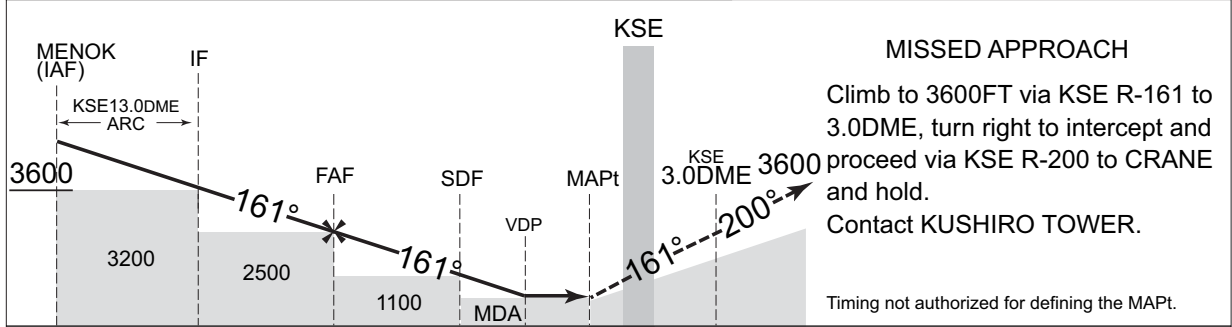
VOR RWY 17

SAPPORO CONTROL 128.325 – 246.1 134.25 – 260.4	KUSHIRO VOR/DME 112.5 KSE CH-72X 43°02'02"N/144°12'15"E	KUSHIRO TOWER 118.05 – 126.2	NO RADAR
--	--	---------------------------------	----------



NM to KSE	FAF	7	6	5	SDF	4	3	MAPt
ALT (3.0° APCH Path)	-	2198	1880	1561	1328	1243	924	-

IF : 431334.26N/1440405.01E
FAF : 430907.97N/1440713.77E



13.0	8.0	4.3	2.6	1.3	0	DME to KSE
11.7	6.7	3.0	1.3	0		NM to RWY17

MINIMA		THR elev. 323	AD elev. 311
CAT	CIRCLING		
	MDA(H)	RVR/CMV	VIS
A	780 (469)	1000	1600
B		1200	
C		1600	2400
D		870 (559)	3200

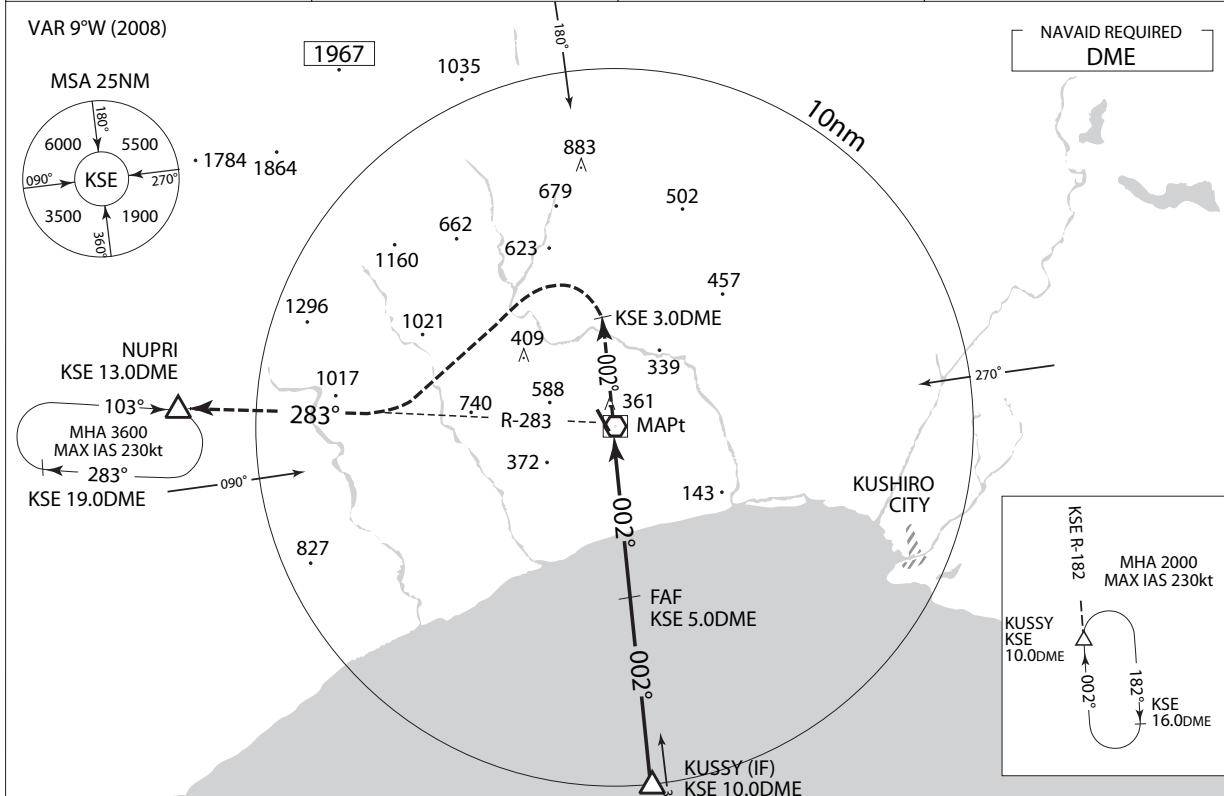
Circling to EAST side of RWY only.

INSTRUMENT APPROACH CHART

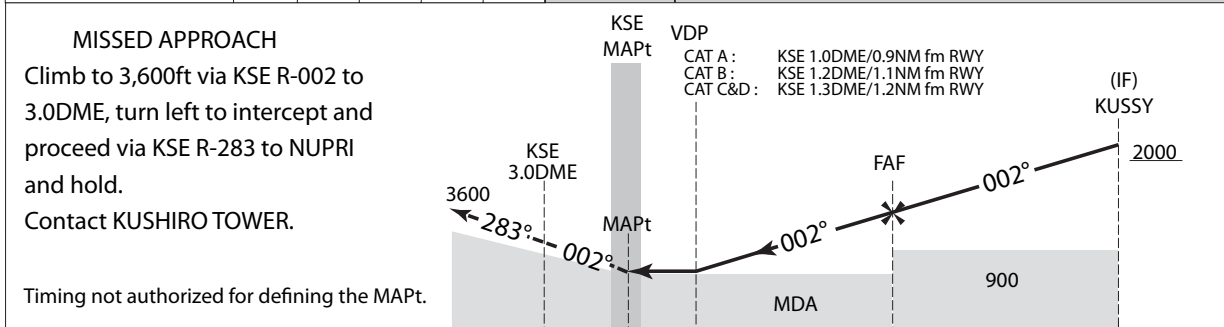
RJCK / KUSHIRO

VOR Z RWY 35

SAPPORO CONTROL 128.325 – 246.1 134.25 – 260.4	KUSHIRO VOR/DME 112.5 KSE $\overline{\text{---}}$ CH-72X 43°02'02"N/144°12'15"E	KUSHIRO TOWER 118.05 – 126.2	NO RADAR
--	--	---------------------------------	----------



NM to KSE	MAPt	2	3	4	FAF
ALT (3.0° APCH Path)	-	928	1245	1561	1877



DME to KSE	0	5.0	10.0
NM to RWY35	0	4.9	9.9

MINIMA	THR elev. 290	AD elev. 311		
CAT			CIRCLING	
	MDA(H)	RVR/CMV	MDA(H)	VIS
A	640 (350)	1200	730 (419)	1600
B	670 (380)	1300	770 (459)	
C	700 (410)	1400		2400
D	720 (430)	1600	870 (559)	3200

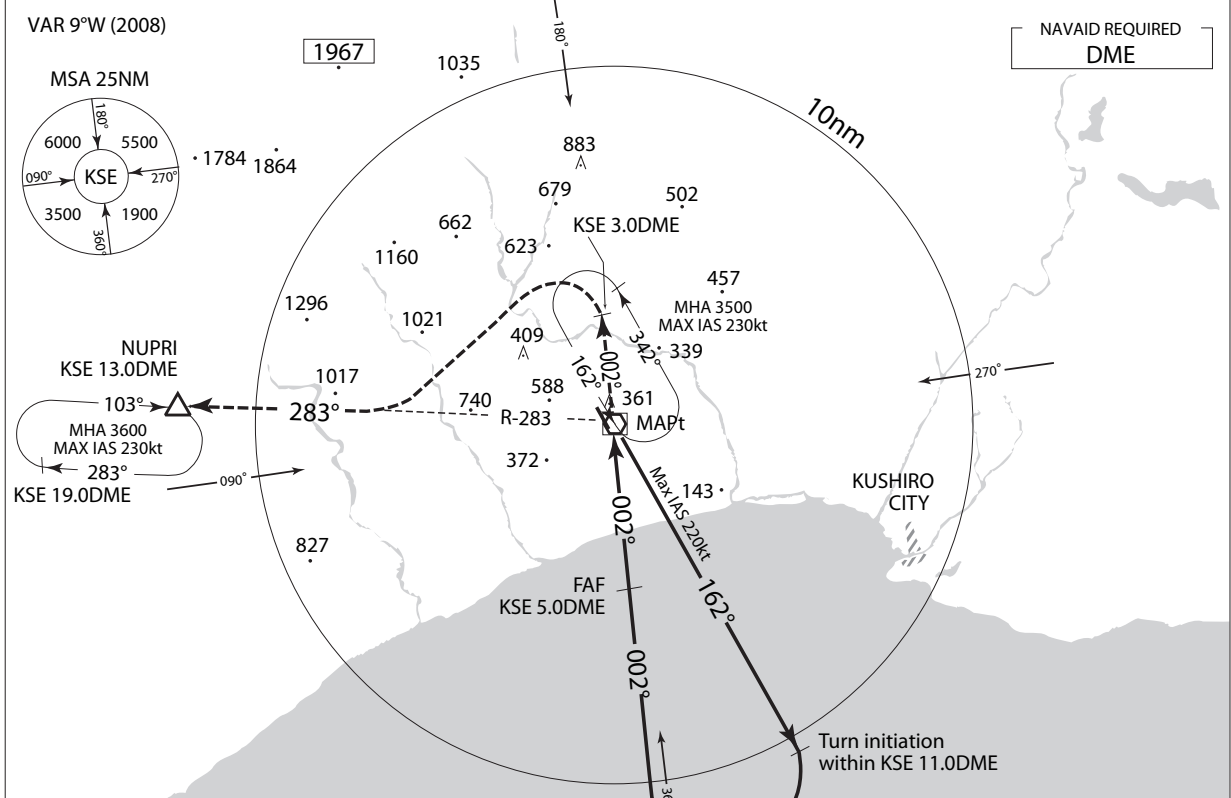
Circling to East side of RWY only.

INSTRUMENT APPROACH CHART

RJCK / KUSHIRO

VOR Y RWY 35

SAPPORO CONTROL 128.325 – 246.1 134.25 – 260.4	KUSHIRO VOR/DME 112.5 KSE $\overline{\text{---}}$ CH-72X 43°02'02"N/144°12'15"E	KUSHIRO TOWER 118.05 – 126.2	NO RADAR
--	--	---------------------------------	----------

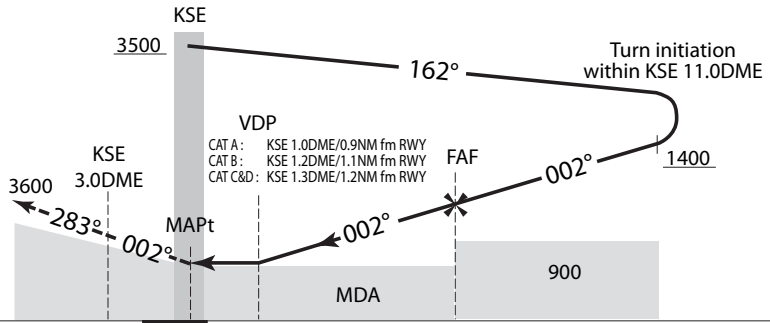


NM to KSE	MAPt	2	3	4	FAF
ALT (3.0° APCH Path)	-	928	1245	1561	1877

FAF : 425703.60N1441300.85E

MISSED APPROACH
Climb to 3600ft via KSE R-002 to 3.0DME, turn left to intercept and proceed via KSE R-283 to NUPRI and hold.
Contact KUSHIRO TOWER.

Timing not authorized for defining the MAPt.



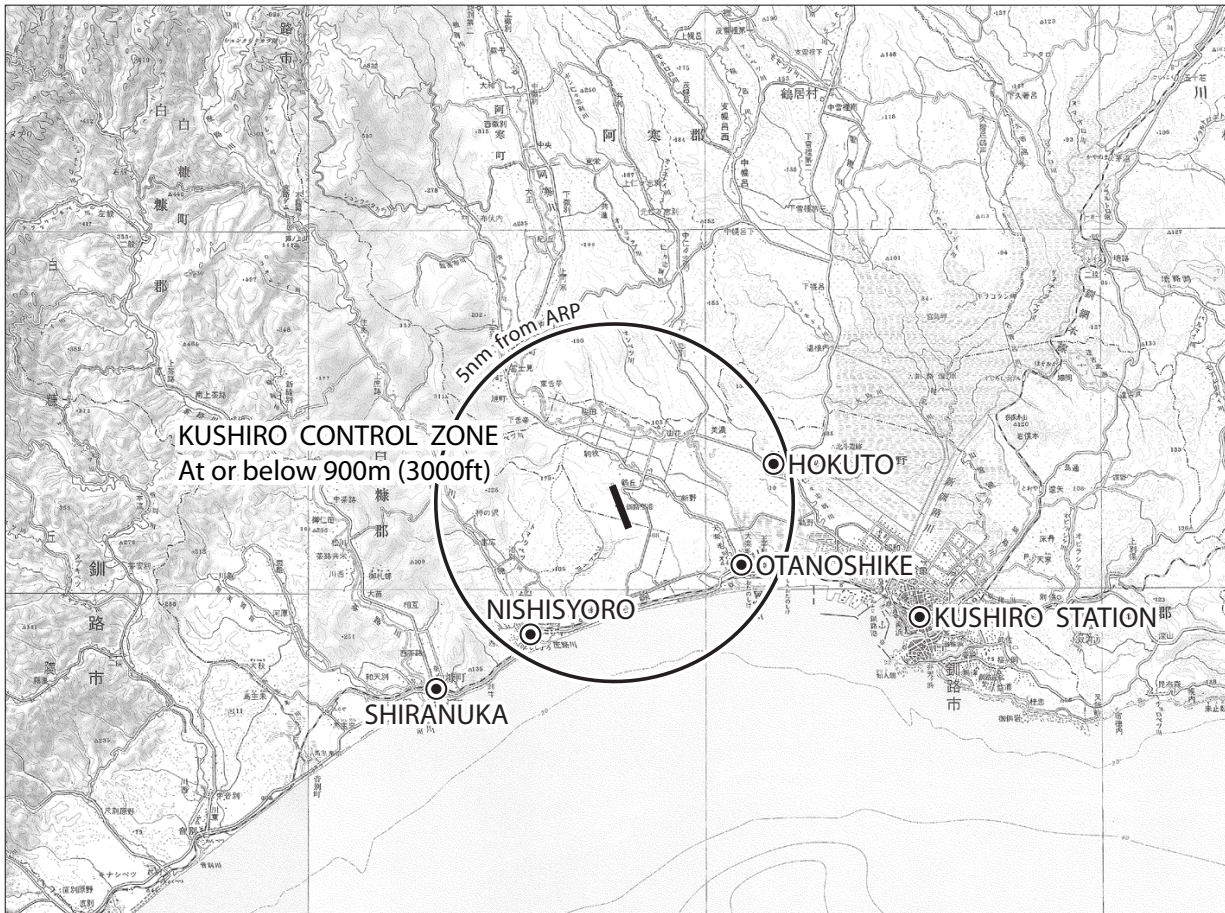
DME to KSE	0	5.0
NM to RWY35	0	4.9

MINIMA	THR elev. 290	AD elev. 311		
CAT			CIRCLING	
	MDA(H)	RVR/CMV	MDA(H)	VIS
A	640 (350)	1200	730 (419)	1600
B	670 (380)	1300	770 (459)	
C	700 (410)	1400		2400
D	720 (430)	1600	870 (559)	3200

Circling to East side of RWY only.

RJCK / KUSHIRO

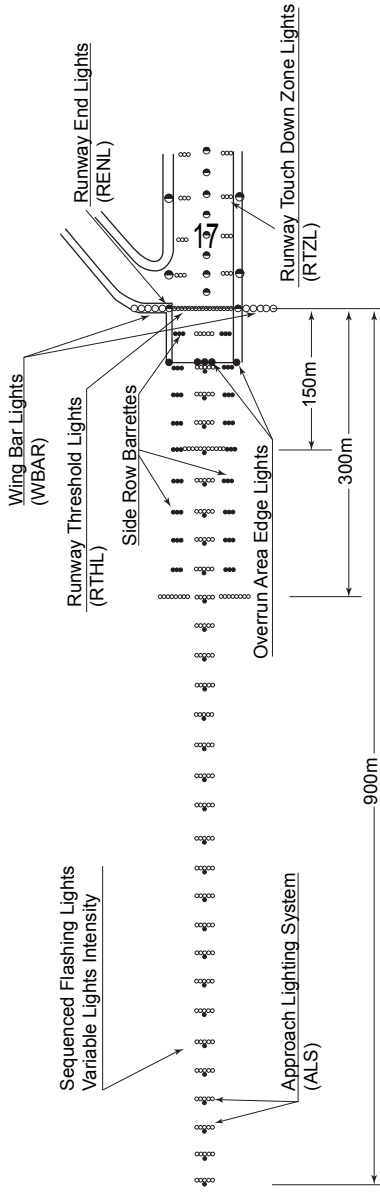
Visual REP



Call sign	BRG / DIST from ARP	Remarks
白 糠 Shiranuka	235°/ 7.3NM	JR駅 Station
西 庶 路 Nishisyoro	224°/ 4.8NM	JR駅 Station
北 斗 Hokuto	089°/ 4.5NM	T字路交差点 Intersection
大 楽 毛 Otanoshike	121°/ 4.3NM	製紙工場煙突群 Chimneys
釧路ステーション Kushiro Station	119°/ 8.9NM	JR駅 Station

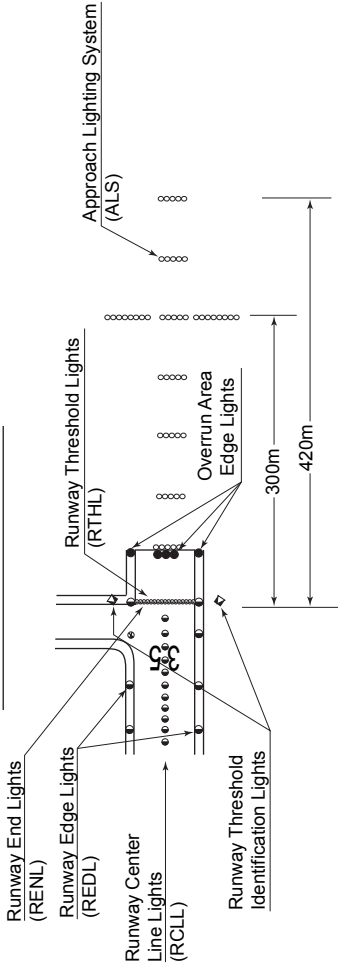
RUNWAY 17

Precision Approach Lighting System



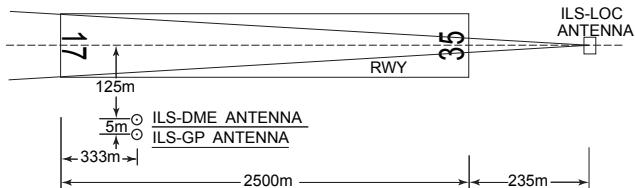
RUNWAY 35

Simple Approach Lighting System

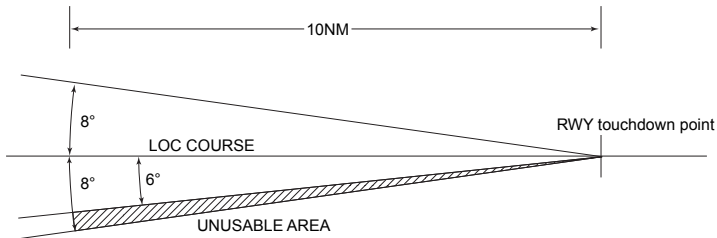


ILS

KUSHIRO AP



REMARKS : 1 . LOC beam BRG(MAG)	168°
2 . HGT of ILS REF datum	16.7m(55ft)
3 . GP Angle	3.0°
4 . ELEV of ILS-DME	97.3m(319ft)



GP unusable in the following area beyond 6° west side of LOC course.