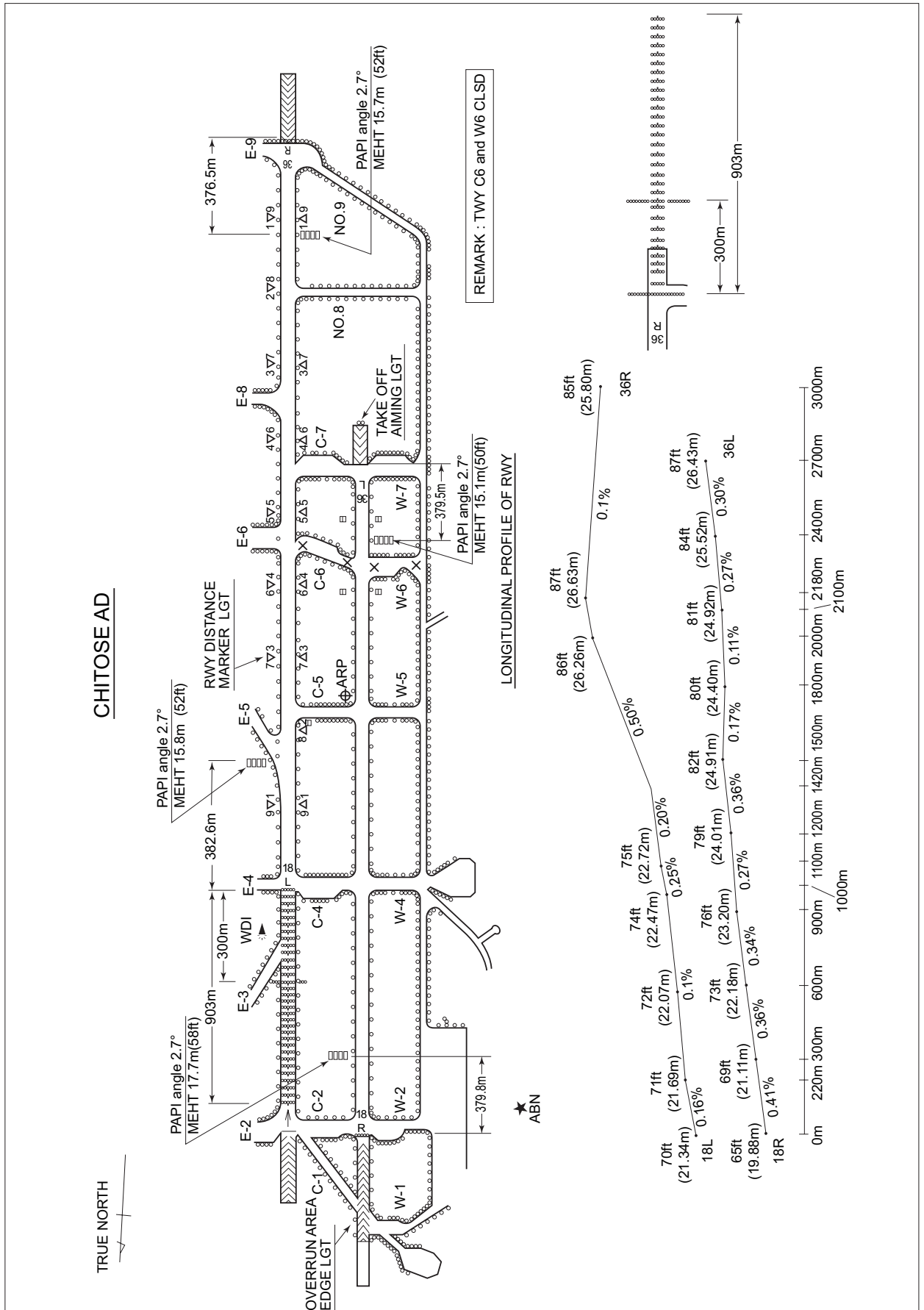


RJCJ / CHITOSE

AD CHART



STANDARD DEPARTURE CHART-INSTRUMENT

RJCJ / CHITOSE

SID

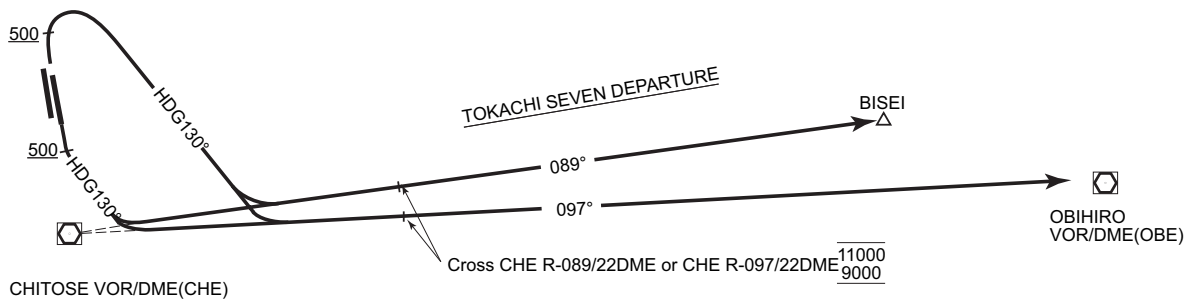
TOKACHI SEVEN DEPARTURE

RWY 36R/36L : Climb via RWY HDG to 500ft or above, turn right climb via HDG 130 DEG to intercept and proceed via....

RWY 18R/18L : Climb via RWY HDG to 500ft or above, turn left climb via HDG 130 DEG to intercept and proceed via....

...CHE R-089 to BISEI or CHE R-097 to OBE VOR/DME.

Cross CHE R-089/22DME or CHE R-097/22DME between 9,000ft and 11,000ft.



STANDARD DEPARTURE CHART-INSTRUMENT

RJCJ / CHITOSE

SID

TOBBY SEVEN DEPARTURE

RWY 36R/36L : Climb via RWY HDG to 500ft or above, turn right to CHE VOR/DME within CHE 10DME (5NM FM RWY end), then via CHE R-185 to TOBBY.

Cross 4DME prior to CHE VOR/DME (MKE R-328) at or above 3,000ft.

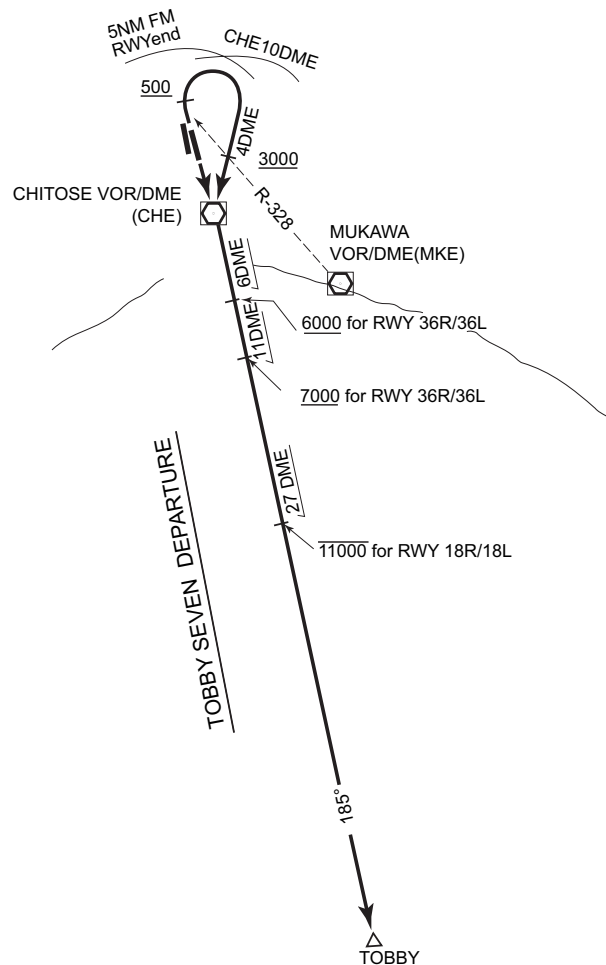
Cross CHE R-185/6DME at or above 6,000ft.

Cross CHE R-185/11DME at or above 7,000ft.

RWY 18R/18L : Climb direct to CHE VOR/DME, then via CHE R-185 to TOBBY.

Cross CHE R-185/27DME at or below 11,000ft.

Note : Aircraft unable to comply with the flight restriction, inform ATC for alternate procedure before departure.



STANDARD DEPARTURE CHART-INSTRUMENT

RJCJ / CHITOSE

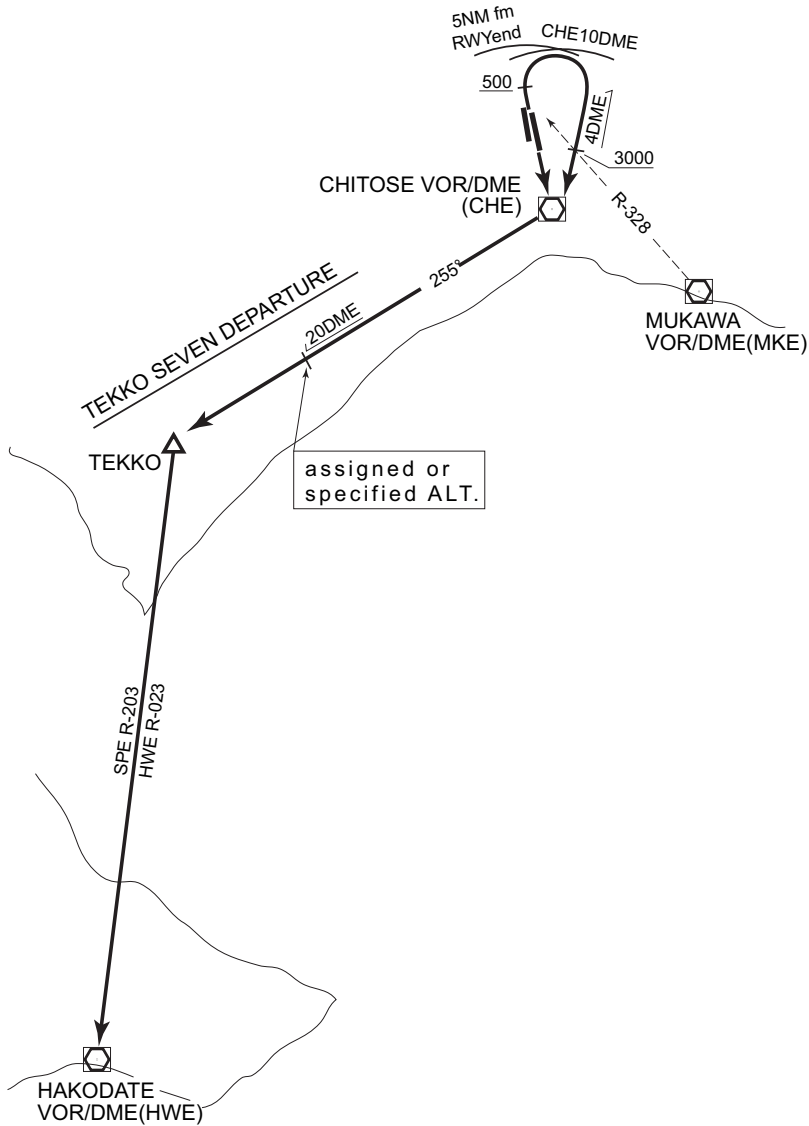
SID

TEKKO SEVEN DEPARTURE

RWY 36R/36L : Climb via RWY HDG to 500ft or above, turn right to CHE VOR/DME within CHE 10DME (5NM FM RWY end).  
Cross 4DME prior to CHE VOR/DME (MKE R-328) at or above 3,000ft....

RWY 18R/18L : Climb direct to CHE VOR/DME....  
....Turn right via CHE R-255 to TEKKO, then via SPE R-203/HWE R-023 to HWE VOR/DME.  
Cross CHE R-255/20DME at assigned or specified altitude.

Note : Aircraft unable to comply with the flight restriction, inform ATC for alternate procedure before departure.



STANDARD DEPARTURE CHART-INSTRUMENT

RJCJ / CHITOSE

SID

HAKODATE THREE DEPARTURE

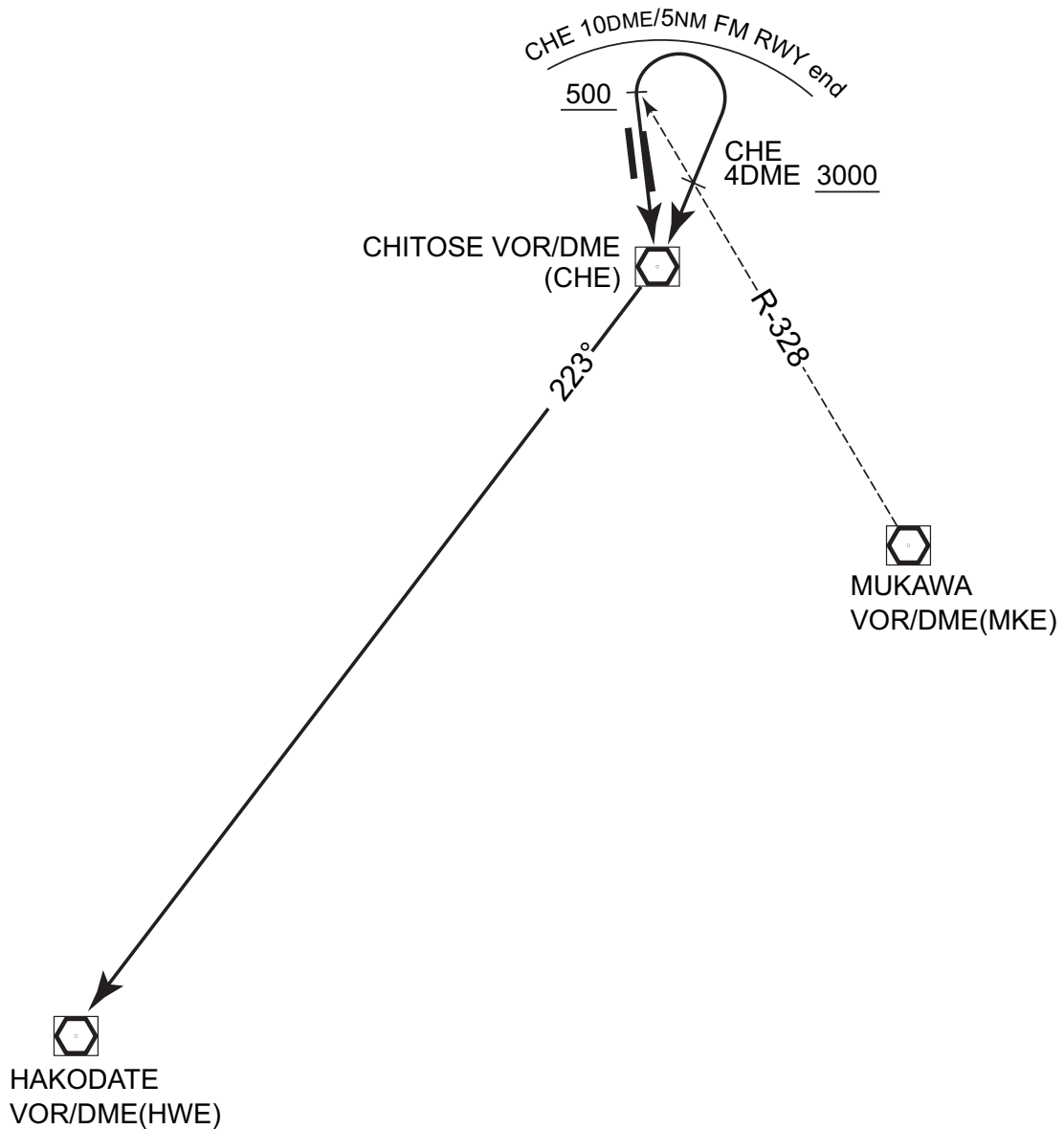
RWY 36R/36L : Climb via RWY HDG to 500ft or above, turn right to CHE VOR/DME within CHE 10DME (5NM FM RWY end).

Cross 4DME prior to CHE VOR/DME (MKE R-328) at or above 3,000ft....

RWY 18R/18L : Climb direct to CHE VOR/DME....

...then via CHE R-223 to HWE VOR/DME.

HAKODATE THREE DEPARTURE



STANDARD DEPARTURE CHART-INSTRUMENT

RJCJ / CHITOSE

SID

**CHITOSE REVERSAL TWO DEPARTURE**

RWY 36R/36L : Climb via ZYT R-360, turn right to intercept and proceed via ZYT R-030 to ZYT TACAN within ZYT 25DME.

Cross ZYT R-360 / 15DME at or above 10,000 ft.

Cross ZYT R-030 / 5DME at specified altitude.

RWY 18R/18L : Climb via RWY HDG to 500 ft or above, turn left climb via ZYT R-090 within ZYT 10DME, turn left to intercept and proceed via ZYT R-060 to ZYT TACAN within ZYT 30DME.

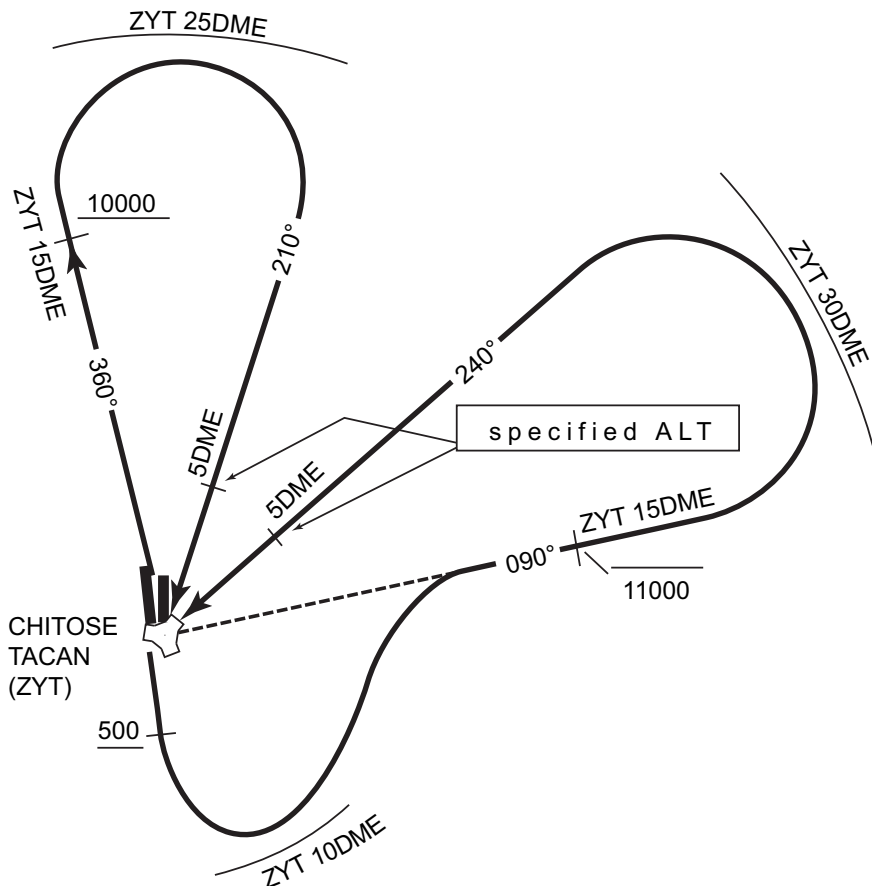
Cross ZYT R-090 / 15DME at or below 11,000 ft.

Cross ZYT R-060 / 5DME at specified altitude.

Note : When take off RWY36L, following climb gradient should be maintained until passing 200ft.

Speed (Knots)	60	120	180	240	300	360
Rate (Feet/Min)	190	380	570	760	950	1140

CHITOSE REVERSAL TWO DEPARTURE



STANDARD DEPARTURE CHART-INSTRUMENT

RJCJ / CHITOSE

SID

CHITOSE THREE DEPARTURE

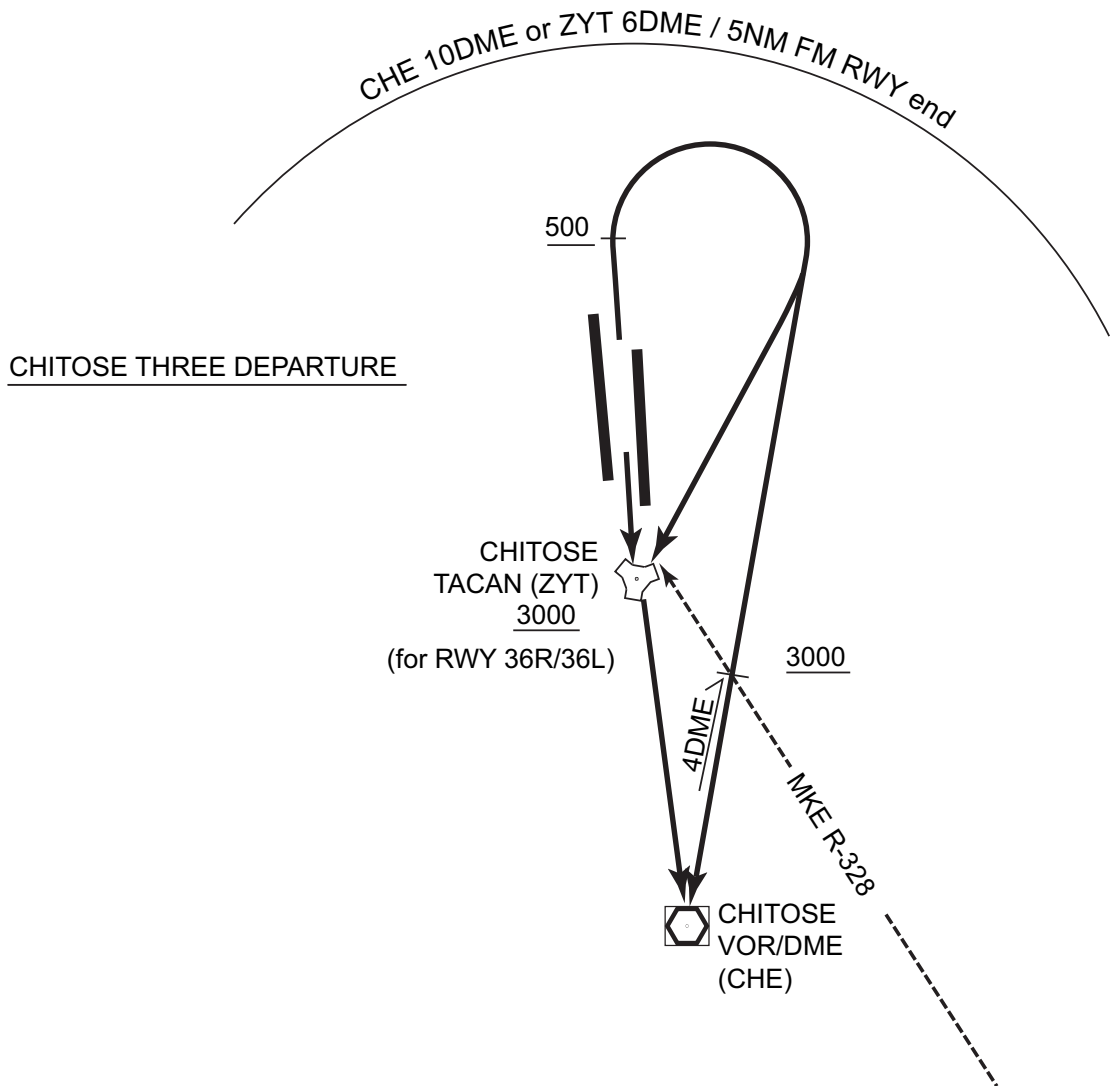
RWY 36R/36L : Climb via RWY HDG to 500ft or above, turn right to CHE VOR/DME (ZYT TACAN) within CHE 10DME (ZYT 6DME/5NM FM RWY end).

Cross 4DME prior to CHE VOR/DME (ZYT TACAN/MKE R-328) at or above 3,000ft.

RWY 18R/18L : Climb direct to CHE VOR/DME (ZYT TACAN).

Note : When take off RWY36L (in case of using ZYT TACAN only), following climb gradient should be maintained until passing 200ft.

Speed (Knots)	60	120	180	240	300	360
Rate (Feet/Min)	190	380	570	760	950	1140



STANDARD DEPARTURE CHART-INSTRUMENT

RJCJ / CHITOSE

SID

MUKAWA FOUR DEPARTURE

RWY 36R/36L: Climb via RWY HDG to 500ft or above, turn right within 4NM, climb via MKE R-335 to MKE VOR/DME, then via MKE R-202 to TOBBY.

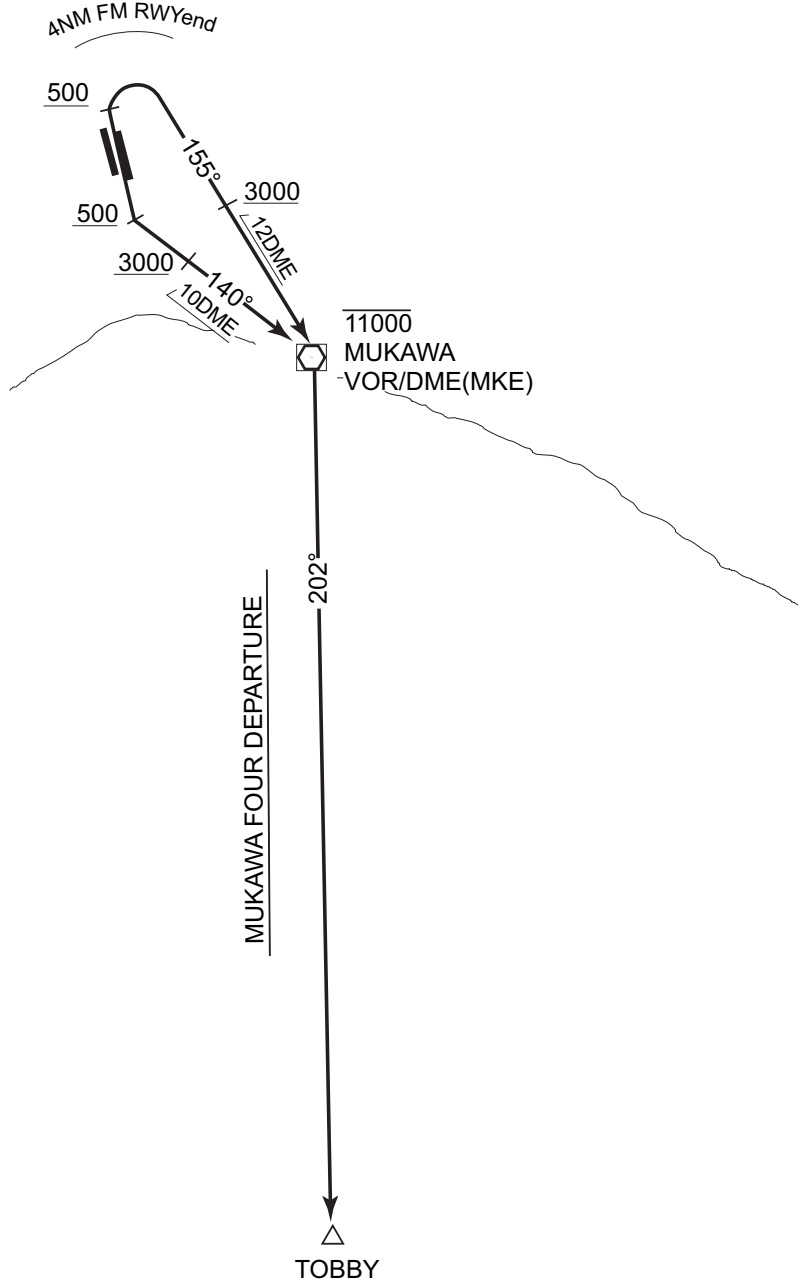
Cross MKE R-335/12DME at or above 3,000ft.

Cross MKE VOR/DME at or below 11,000ft.

RWY 18R/18L: Climb via RWY HDG to 500ft or above, turn left, climb via MKE R-320 to MKE VOR/DME, then via MKE R-202 to TOBBY.

Cross MKE R-320/10DME at or above 3,000ft.

Corss MKE VOR/DME at or below 11,000ft.





STANDARD DEPARTURE CHART-INSTRUMENT

RJCJ / CHITOSE

SID

KURIS FOUR DEPARTURE

RWY 36R/36L: ....

RWY 18R/18L: Climb via RWY HDG to 500ft or above, turn left within  
4NM,...

...climb via CHE R-011 to KURIS.

KURIS



011°

KURIS FOUR DEPARTURE

500

R-011

4NM FM RWY end



CHITOSE VOR/DME(CHE)

## STANDARD ARRIVAL CHART-INSTRUMENT

RJCJ / CHITOSE

STAR

STARs for RWY18CHITOSE ARRIVAL

From over CHE VOR/DME, via CHE R-045 to intercept and proceed via MKE R-360 to MKE R-360/30DME, then turn left, proceed via 240 DEG to NA NDB.

Cross MKE R-360/25DME at or below 7,000 FT, cross MKE R-360/30DME at or above 5,000 FT, cross NA NDB at or above 3,000 FT.

NASEL ARRIVAL

From over NASEL, via CHE R-210 (NAVER, via CHE R-201) to intercept and proceed via MKE R-240 to MKE VOR/DME, via MKE R-360 to MKE R-360/30DME, then turn left, proceed via 240 DEG to NA NDB.

Cross MKE R-360/13DME at or above 12,000 FT, cross MKE R-360/25DME at or below 7,000 FT, cross MKE R-360/30DME at or above 5,000 FT, cross NA NDB at or above 3,000 FT.

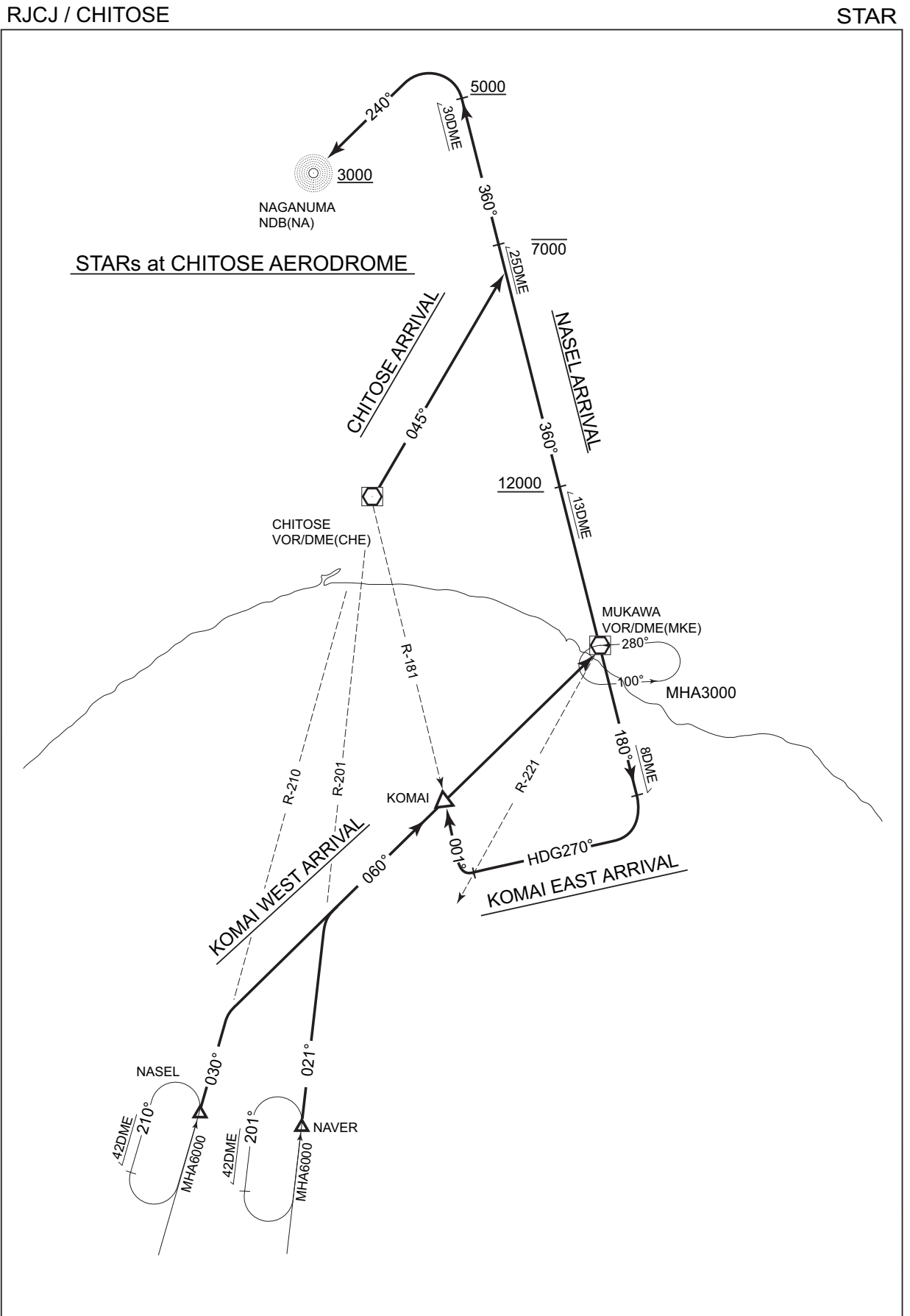
STARs for RWY36KOMAI WEST ARRIVAL

From over NASEL, via CHE R-210 (NAVER, via CHE R-201) to intercept and proceed via MKE R-240 to KOMAI.

KOMAI EAST ARRIVAL

From over MKE VOR/DME, via MKE R-180 to MKE R-180/8DME, turn right, proceed via HDG 270 DEG to intercept MKE R-221, then turn right to intercept CHE R-181 to KOMAI.

STANDARD ARRIVAL CHART-INSTRUMENT

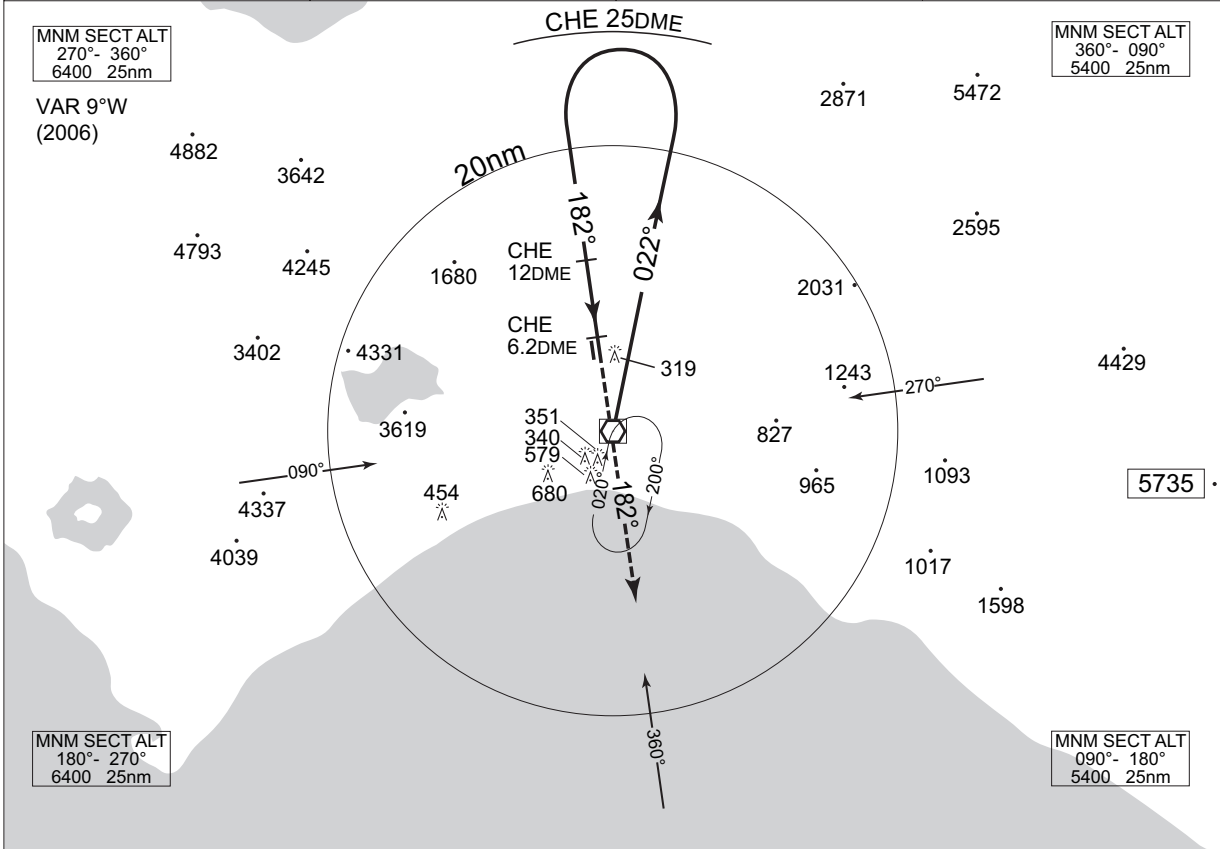


INSTRUMENT APPROACH CHART

RJCJ / CHITOSE

VOR/DME NR.1 RWY 18L

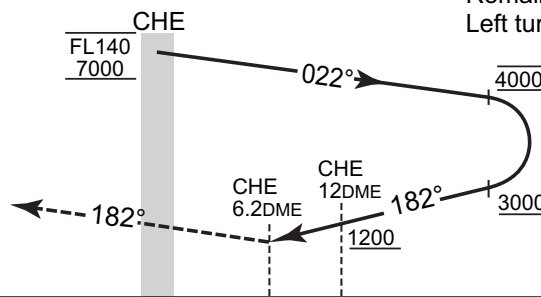
CHITOSE APP 120.1-124.7 362.3-305.7	CHITOSE VOR/DME 116.9 CHE CH-116 42°42'00"N/141°41'10"E	CHITOSE TOWER 126.2 - 118.2 236.8-304.5-121.7G	RADAR AVBL
---	--	--	------------



MISSED APPROACH

At 6.2DME prior to CHE VOR/DME, climb to 4000ft (2000ft for PROP) on CHE R-182. Contact CHITOSE APP.

Remain within CHE 25DME  
Left turn start at 4000ft.

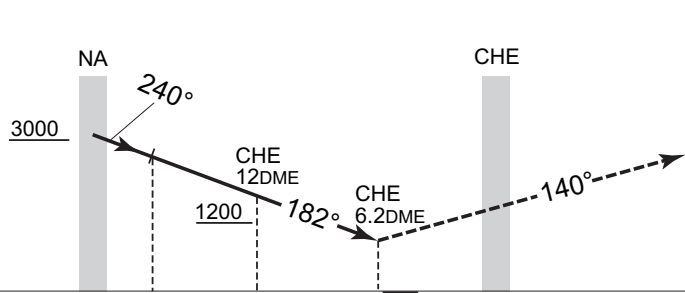
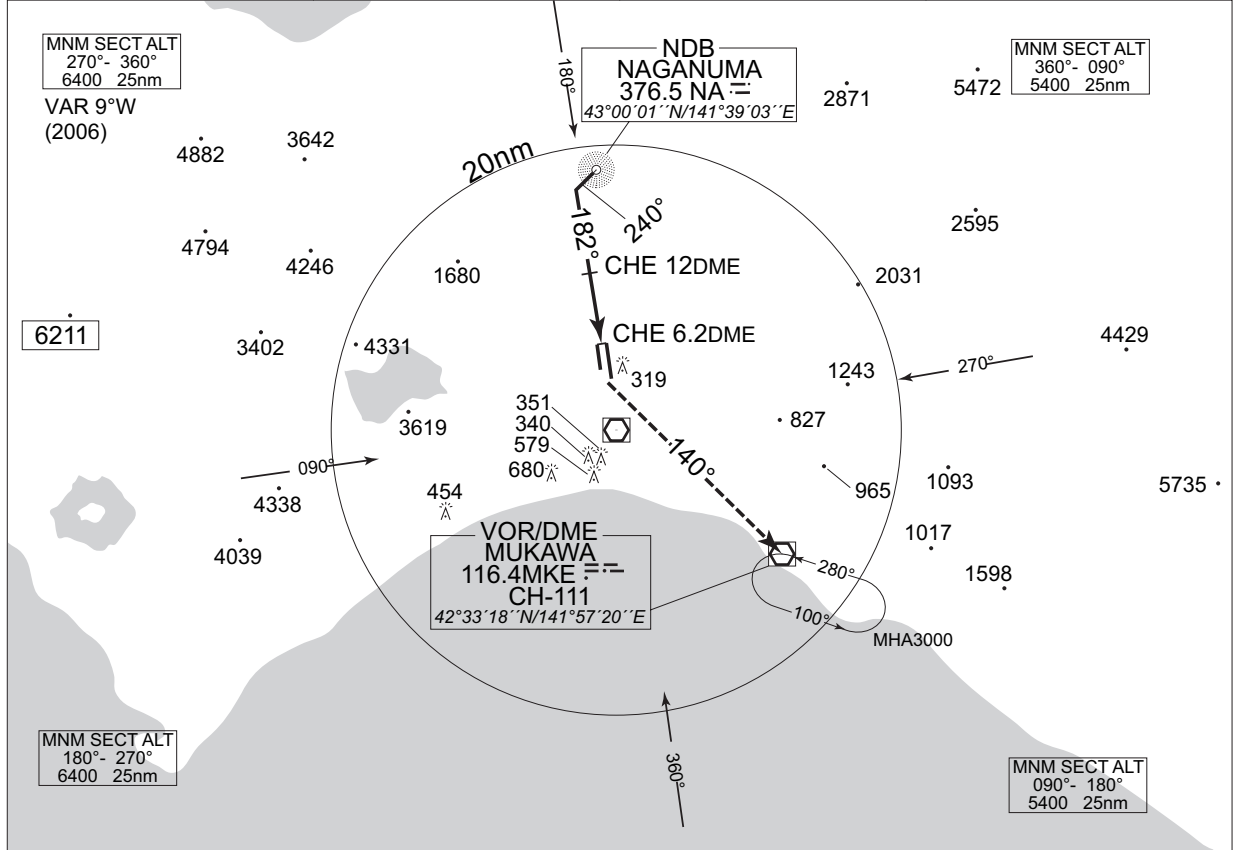


MINIMA		THR elev. 70	AD elev. 89	
CAT			CIRCLING	
	MDA(H)	RVR/CMV	MDA(H)	VIS
A	560 (490)	1000	620 (531)	1600
B		1200		2400
C				
D		1600		640 (551)

INSTRUMENT APPROACH CHART

RJCJ / CHITOSE VOR/DME NR.2 RWY 18L

CHITOSE APP 120.1-124.7 362.3-305.7	CHITOSE VOR/DME 116.9 CHE $\overline{\text{---}}$ CH-116 42°42'00"N/141°41'10"E	CHITOSE TOWER 118.2-126.2 236.8-304.5-121.7G	RADAR AVAILABLE
---	--	--	-----------------



**MISSED APPROACH**  
At 6.2DME prior to CHE VOR/DME, turn left climb via MKE R-320 to 5000ft proceed to MKE VOR/DME and hold.  
Contact CHITOSE APP.

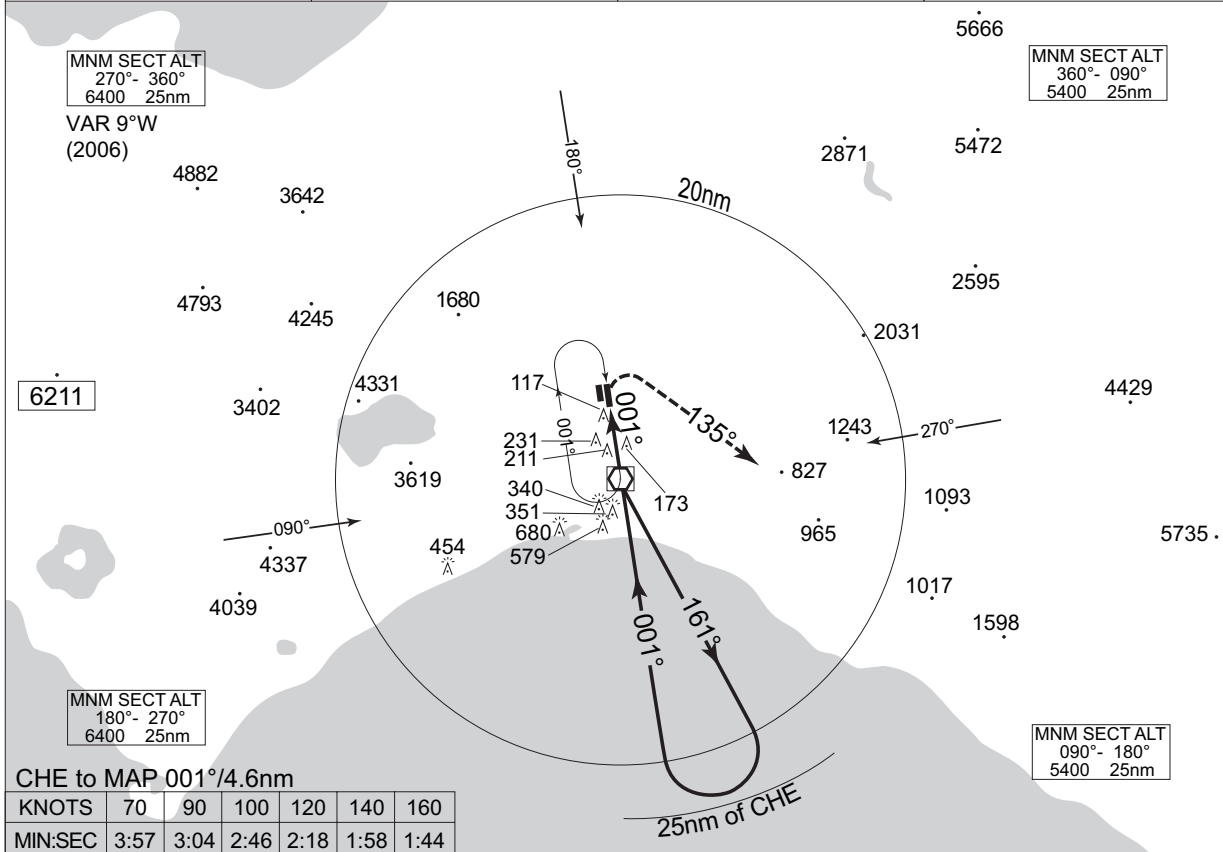
	MINIMA	THR elev. 70	AD elev. 89		
CAT			CIRCLING		
	MDA(H)	RVR/ CMV	MDA(H)	VIS	
	A	1000	620 (531)	1600	
	B	1200		2400	
	C	1600		3200	
D	560 (490)	640 (551)			

INSTRUMENT APPROACH CHART

RJCJ / CHITOSE

VOR NR.1 RWY 36R

CHITOSE APP 120.1 - 124.7 362.3 - 305.7	CHITOSE VOR/DME 116.9 CHE CH-116X 42°42'00"N/141°41'10"E	CHITOSE TOWER 126.2 - 118.2 236.8 - 304.5 - 121.7G	RADAR AVAILABLE
---	---	--	-----------------



CHE to MAP 001°/4.6nm

KNOTS	70	90	100	120	140	160
MIN:SEC	3:57	3:04	2:46	2:18	1:58	1:44

**MISSED APPROACH**  
At 4.6nm after passing CHE VOR, turn right climb to 4000ft (2000ft for PROP) on 135°. Contact CHITOSE APP.

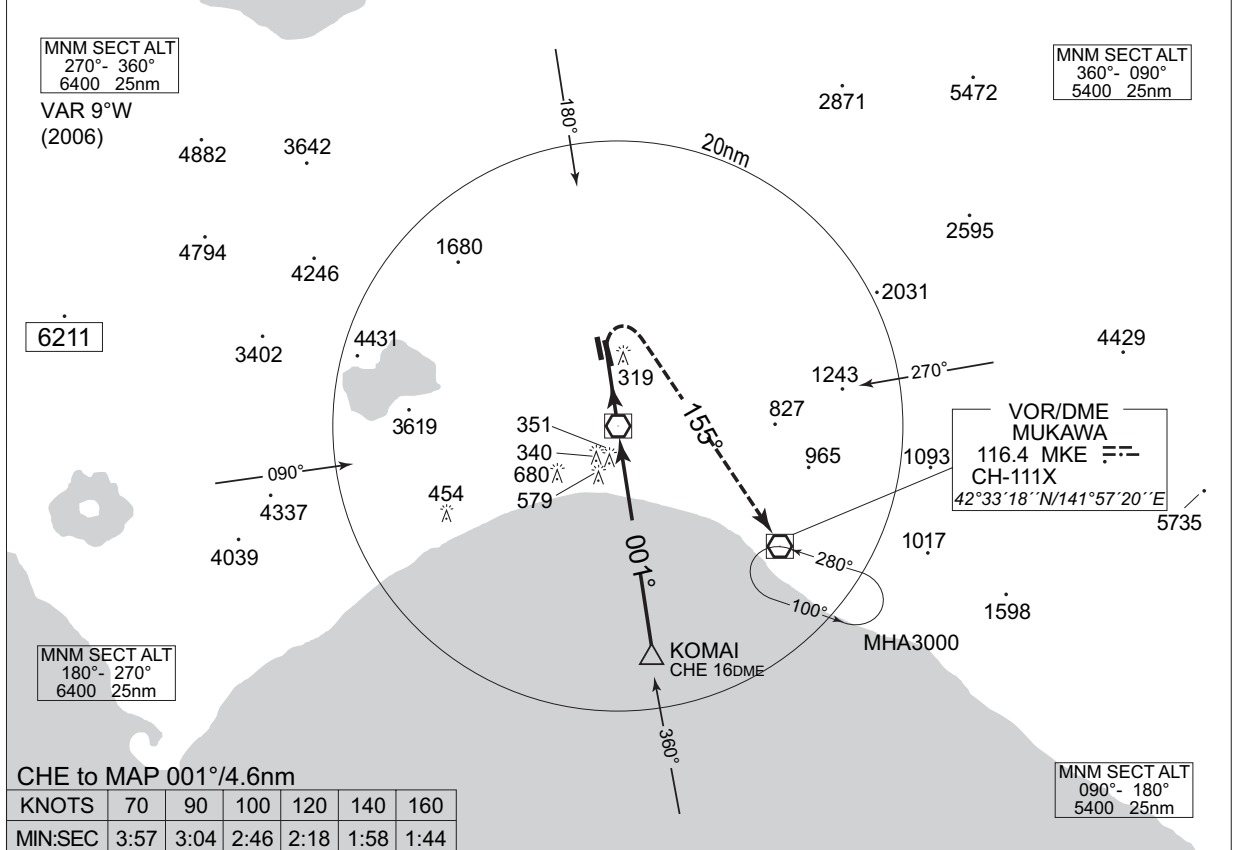
MINIMA		THR elev. 85	AD elev. 89	
CAT	CIRCLING			
	MDA(H)	RVR/CMV	MDA(H)	VIS
A	620 (531)	1000	620 (531)	1600
B		1200		2400
C			1600	
D		640 (551)		

INSTRUMENT APPROACH CHART

RJCJ / CHITOSE

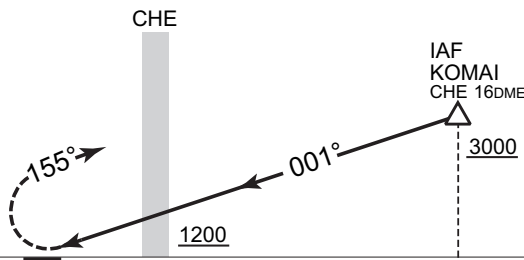
VOR NR.2 RWY 36R

CHITOSE APP 120.1 - 124.7 362.3 - 305.7	CHITOSE VOR/DME 116.9 CHE CH-116X 42°42'00"N/141°41'10"E	CHITOSE TOWER 118.2 - 126.2 236.8 - 304.5 - 121.7G	RADAR AVAILABLE
---	---	--	-----------------



MISSED APPROACH

At 4.6nm after passing CHE VOR,  
turn right climb via MKE  
R-335 to 5000ft, proceed to  
MKE VOR/DME and hold.  
Contact CHITOSE APP.



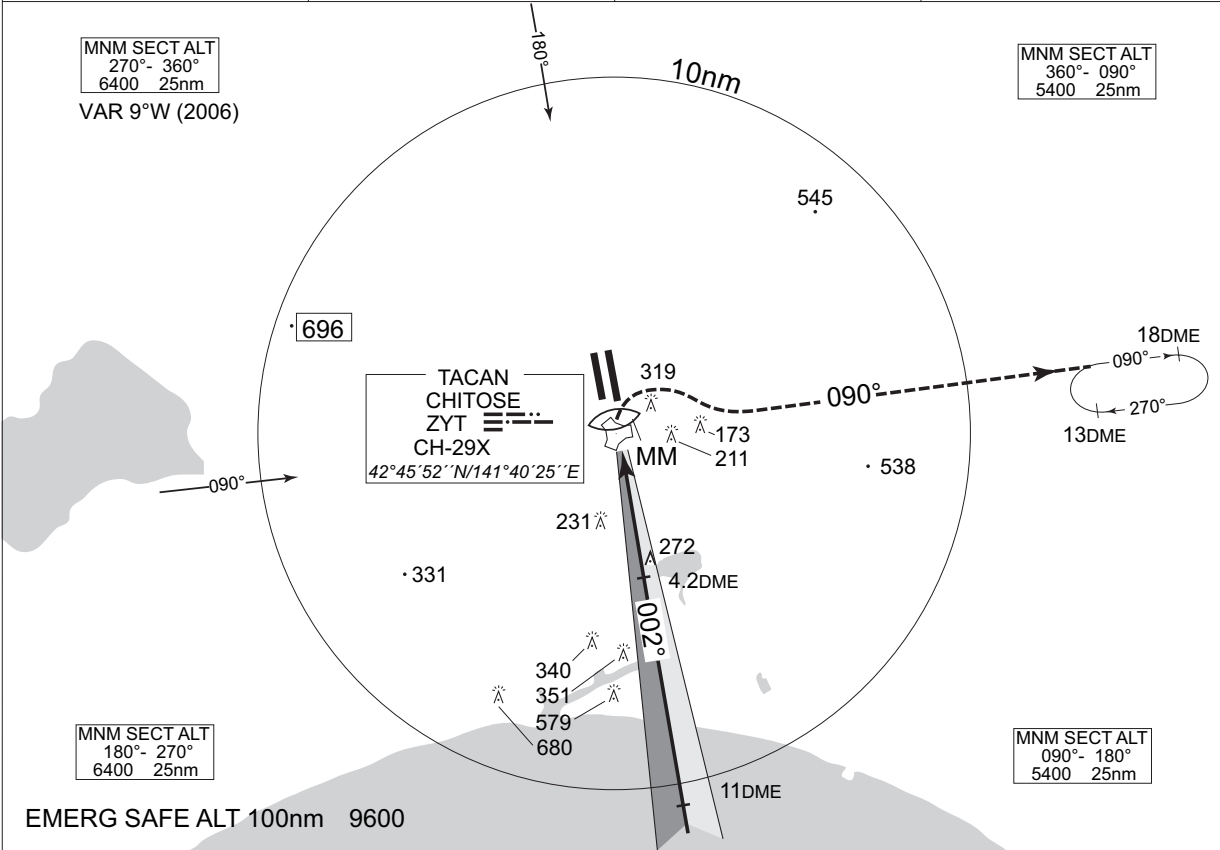
CAT	MINIMA		CIRCLING	
	MDA(H)	RVR/CMV	MDA(H)	VIS
A	620 (531)	1000	620 (531)	1600
B		1200		
C				
D		1600		

INSTRUMENT APPROACH CHART

RJCJ / CHITOSE

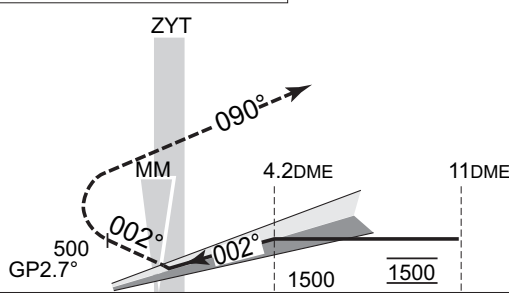
ILS RWY 36R

CHITOSE APP 124.7 - 120.1 362.3 - 305.7	ILS - LOC 110.3 ICB $\equiv::\cdot\cdot$ ILS-GP 335.0	CHITOSE TOWER 126.2 - 118.2 236.8 - 304.5 - 121.7G	RADAR AVBL
---	---	--	------------



ILS REFERENCE DATUM 48

**MISSED APPROACH**  
At DA, climb to 500ft on 002° then turn right climb via ZYT R-090 to 18DME fix to 4,000ft and hold. Contact CHITOSE APP.



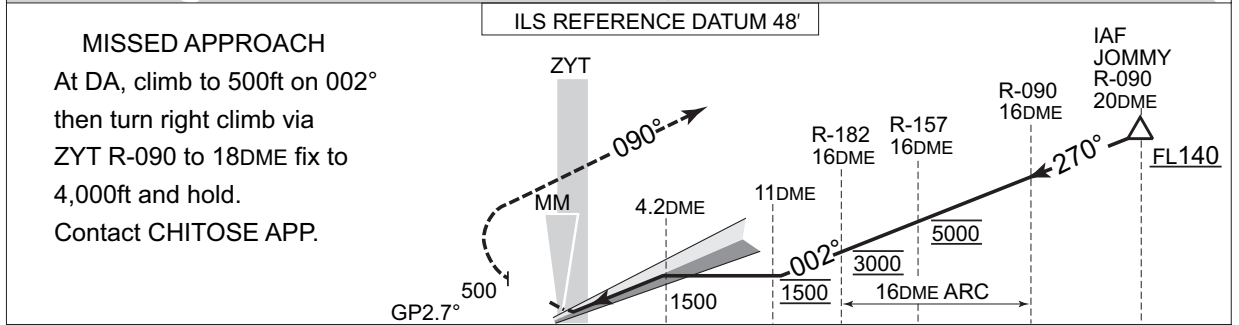
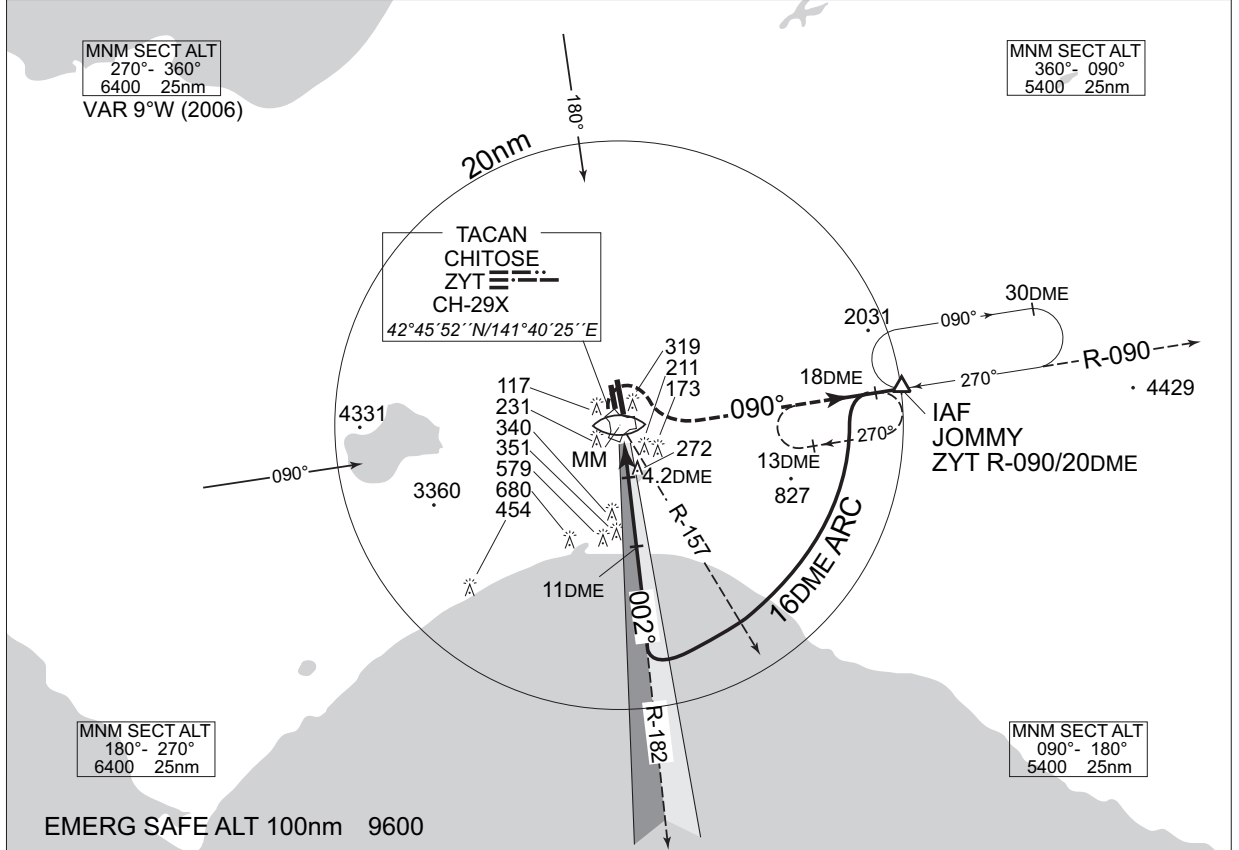
MINIMA		THR elev. 85		AD elev. 89		
CAT	CAT I		LOC		CIRCLING	
	DA(H)	RVR/CMV	MDA(H)	RVR/CMV	MDA(H)	VIS
A	291 (206)	750	580 (491)	1000	620 (531)	1600
B				1200		
C				1600	640 (551)	3200
D						



INSTRUMENT APPROACH CHART

RJCJ / CHITOSE TACAN NR.1 ILS RWY 36R

CHITOSE APP 124.7 - 120.1 362.3 - 305.7	ILS - LOC 110.3 ICB $\equiv \equiv \equiv$ ILS - GP 335.0	CHITOSE TOWER 126.2 - 118.2 236.8 - 304.5 - 121.7G	RADAR AVBL
---	---	--	------------



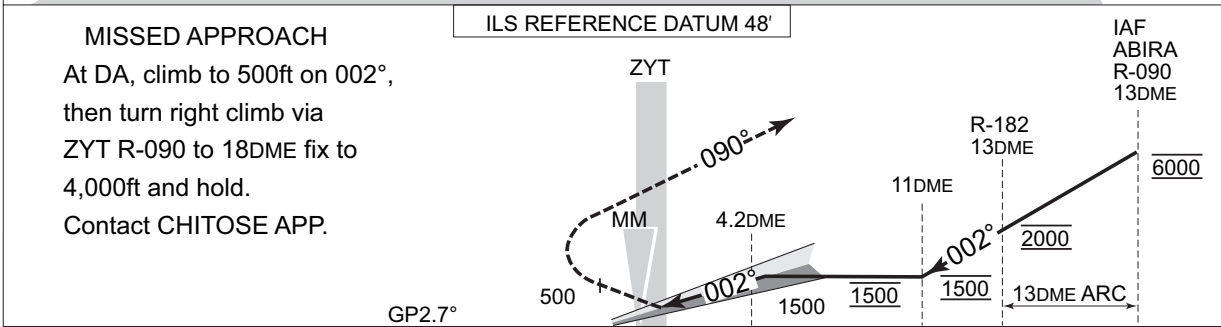
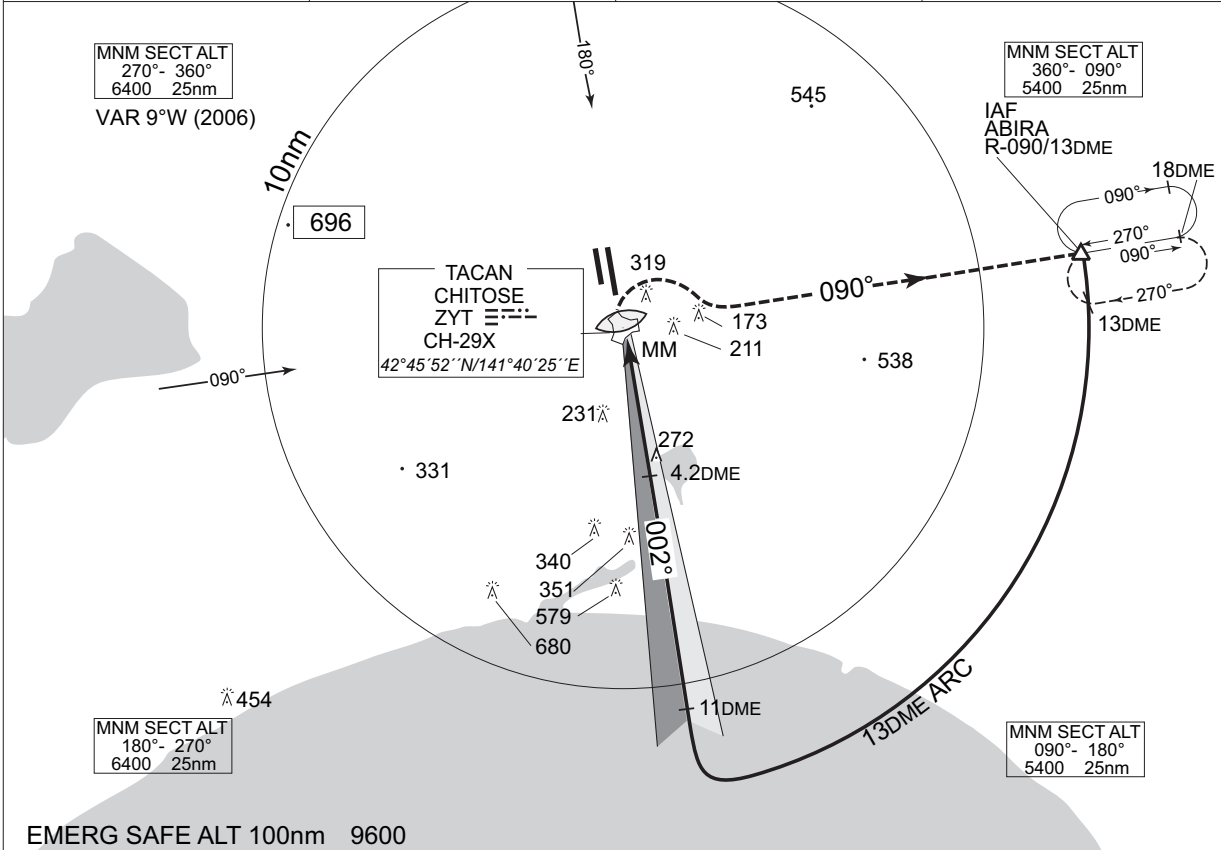
MINIMA		THR elev. 85		AD elev. 89		
CAT	CAT I		LOC		CIRCLING	
	DA(H)	RVR/ CMV	MDA(H)	RVR/ CMV	MDA(H)	VIS
A	291 (206)	750	580 (491)	1000	620 (531)	1600
B				1200		2400
C				1600		3200
D				1600		3200

INSTRUMENT APPROACH CHART

RJCJ / CHITOSE

TACAN NR.5 ILS RWY 36R

CHITOSE APP 124.7 - 120.1 362.3 - 305.7	ILS - LOC 110.3 ICB $\equiv$ $\equiv$ $\equiv$ ILS - GP 335.0	CHITOSE TOWER 126.2 - 118.2 236.8 - 304.5 - 121.7G	RADAR AVBL
---	---	--	------------

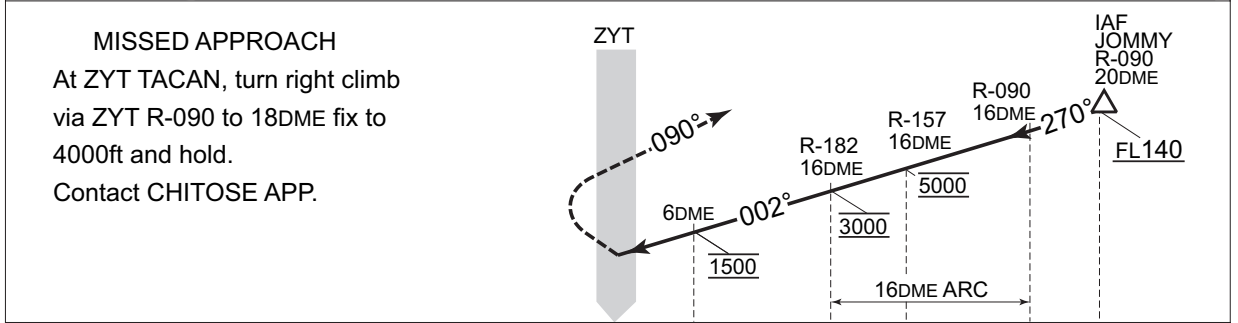
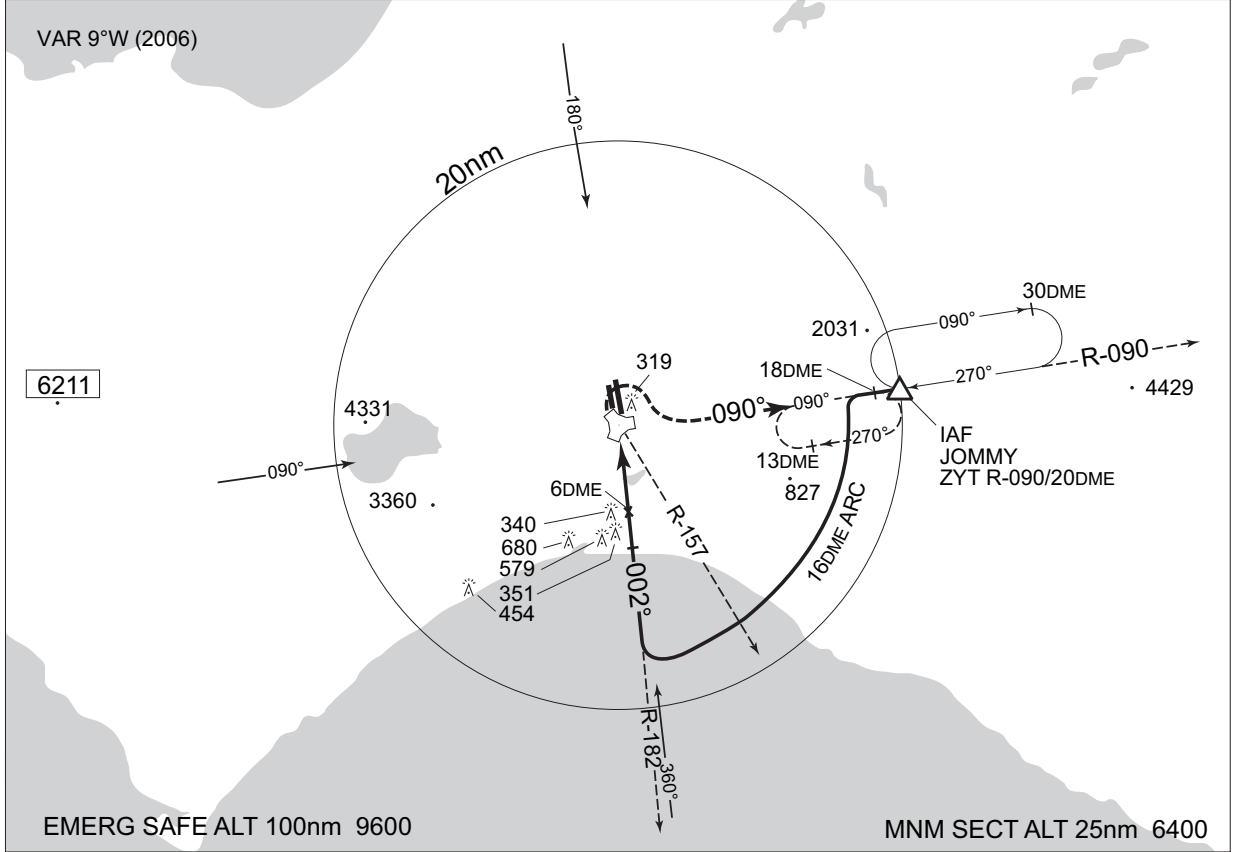


MINIMA		THR elev. 85	AD elev. 89					
CAT	CAT I		LOC		CIRCLING			
	DA(H)	RVR/CMV	MDA(H)	RVR/CMV	MDA(H)	VIS		
A	291 (206)	750	580 (491)	1000	620 (531)	1600		
B				1200				
C				1600			640 (551)	3200
D				1600				

INSTRUMENT APPROACH CHART

RJCJ / CHITOSE TACAN NR.1 RWY 36R

CHITOSE APP 124.7 - 120.1 362.3 - 305.7	CHITOSE TACAN CH-29 ZYT $\equiv \text{---} \text{---}$ 42°45'52"N/141°40'25"E	CHITOSE TOWER 126.2 - 118.2 236.8 - 304.5 - 121.7G	RADAR AVAILABLE
---	---	--	-----------------



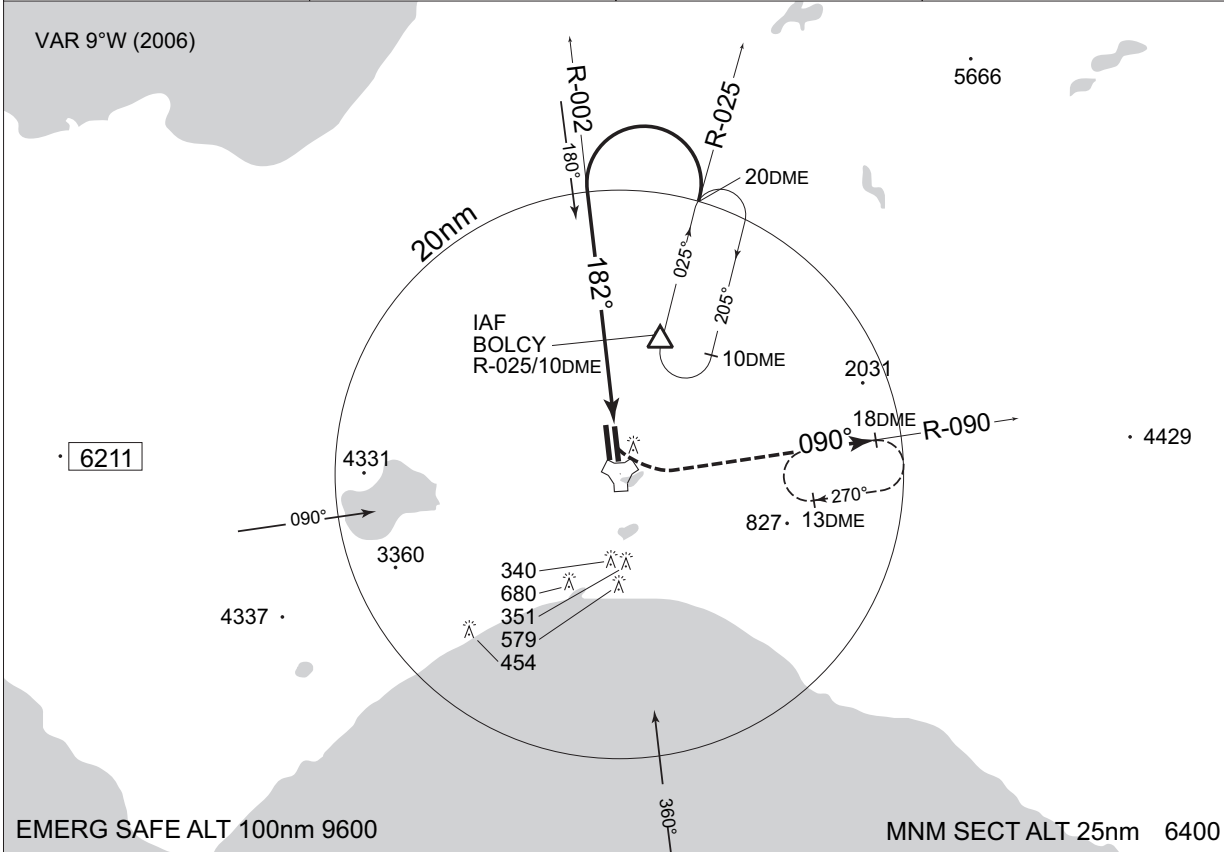
MINIMA	THR elev. 85	AD elev. 89		
CAT			CIRCLING	
	MDA(H)	RVR/CMV	MDA(H)	VIS
A	600 (511)	1000	600 (511)	1600
B		1200		2400
C				
D				

INSTRUMENT APPROACH CHART

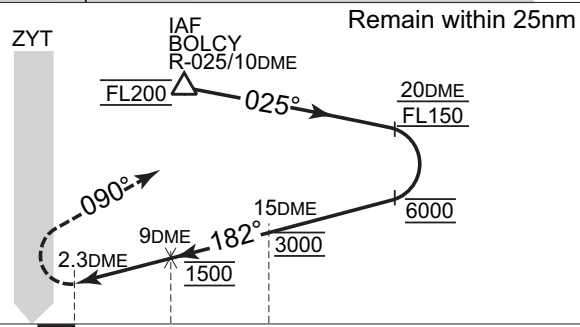
RJCJ / CHITOSE

TACAN NR.2 RWY 18L

CHITOSE APP 124.7-120.1 362.3-305.7	CHITOSE TACAN CH-29 ZYT ≡≡≡ 42°45'52''N/141°40'25''E	CHITOSE TOWER 126.2 - 118.2 236.8-304.5-121.7G	RADAR AVAILABLE
---	--	--	-----------------



**MISSED APPROACH**  
At 2.3DME prior to ZYT TACAN,  
turn left climb via ZYT R-090  
to 18DME fix to 4000ft and hold.  
Contact CHITOSE APP.

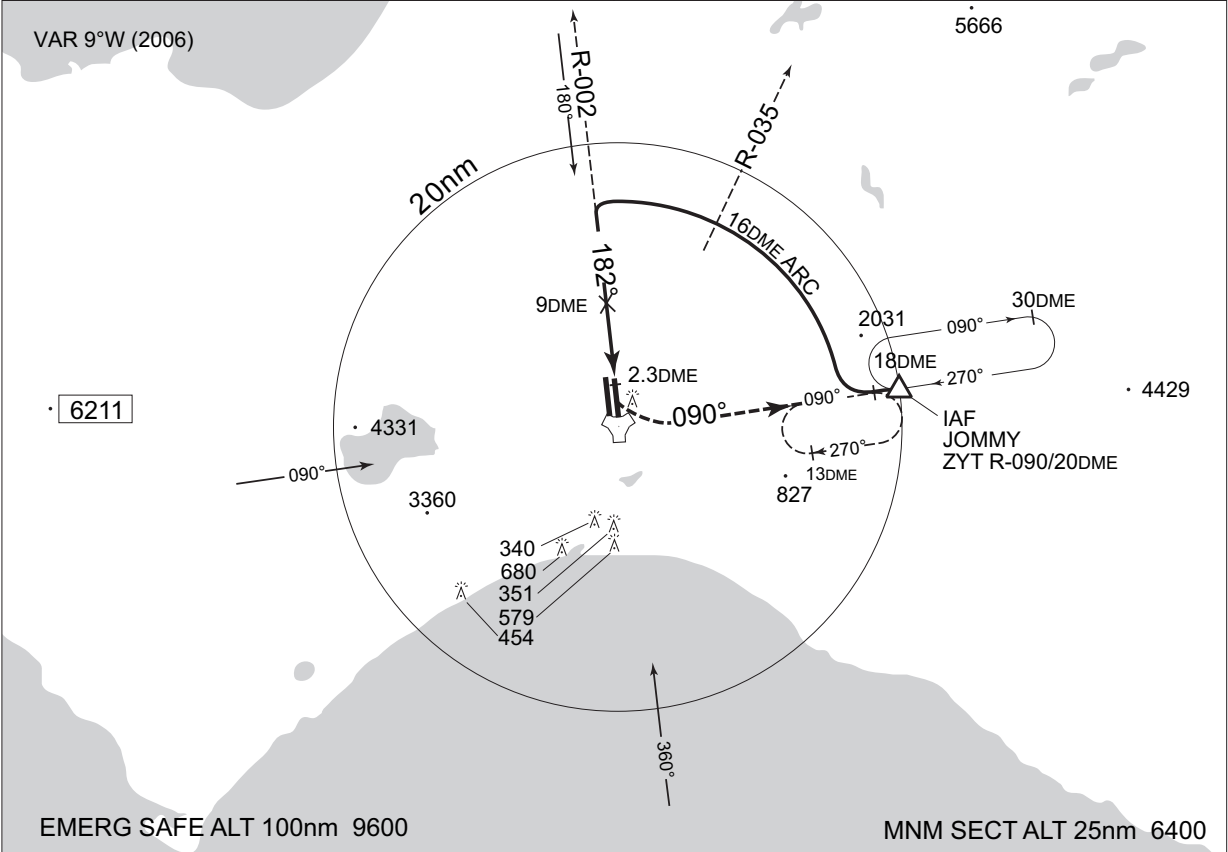


MINIMA	THR elev. 70	AD elev. 89			
CAT			CIRCLING		
	MDA(H)	RVR/CMV	MDA(H)	VIS	
A	600 (530)	1000	600 (511)	1600	
B		1200		2400	
C				1600	3200
D					

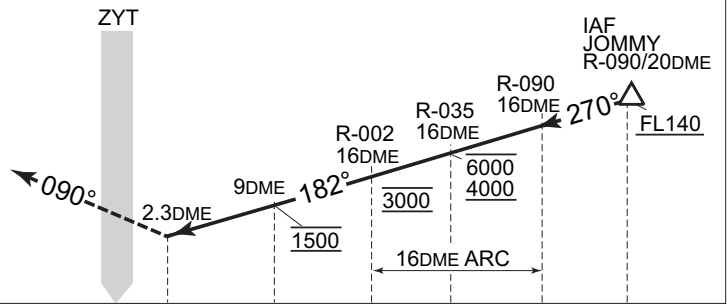
INSTRUMENT APPROACH CHART

RJCJ / CHITOSE TACAN NR.3 RWY 18L

CHITOSE APP 124.7 - 120.1 362.3 - 305.7	CHITOSE TACAN CH-29 ZYT $\equiv \text{---} \text{---}$ 42°45'52"N/141°40'25"E	CHITOSE TOWER 126.2 - 118.2 236.8 - 304.5 - 121.7G	RADAR AVAILABLE
---	---	--	-----------------



**MISSED APPROACH**  
At 2.3 DME prior to ZYT TACAN,  
turn left climb via ZYT R-090 to  
18DME fix to 4000ft and hold.  
Contact CHITOSE APP.



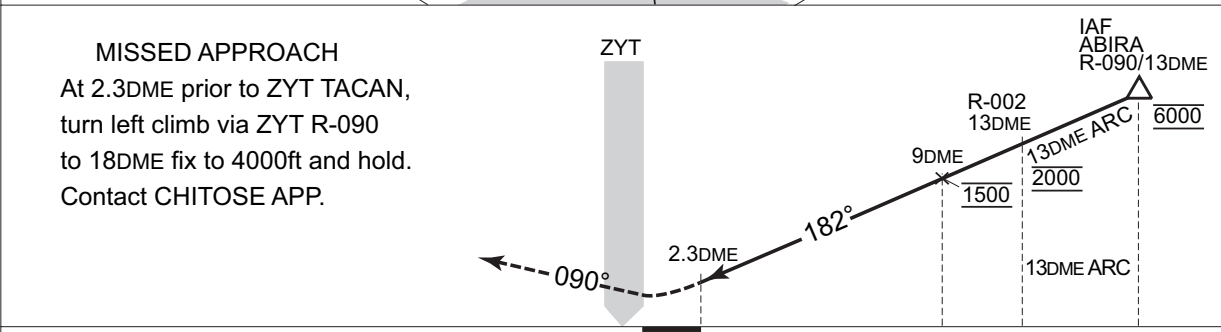
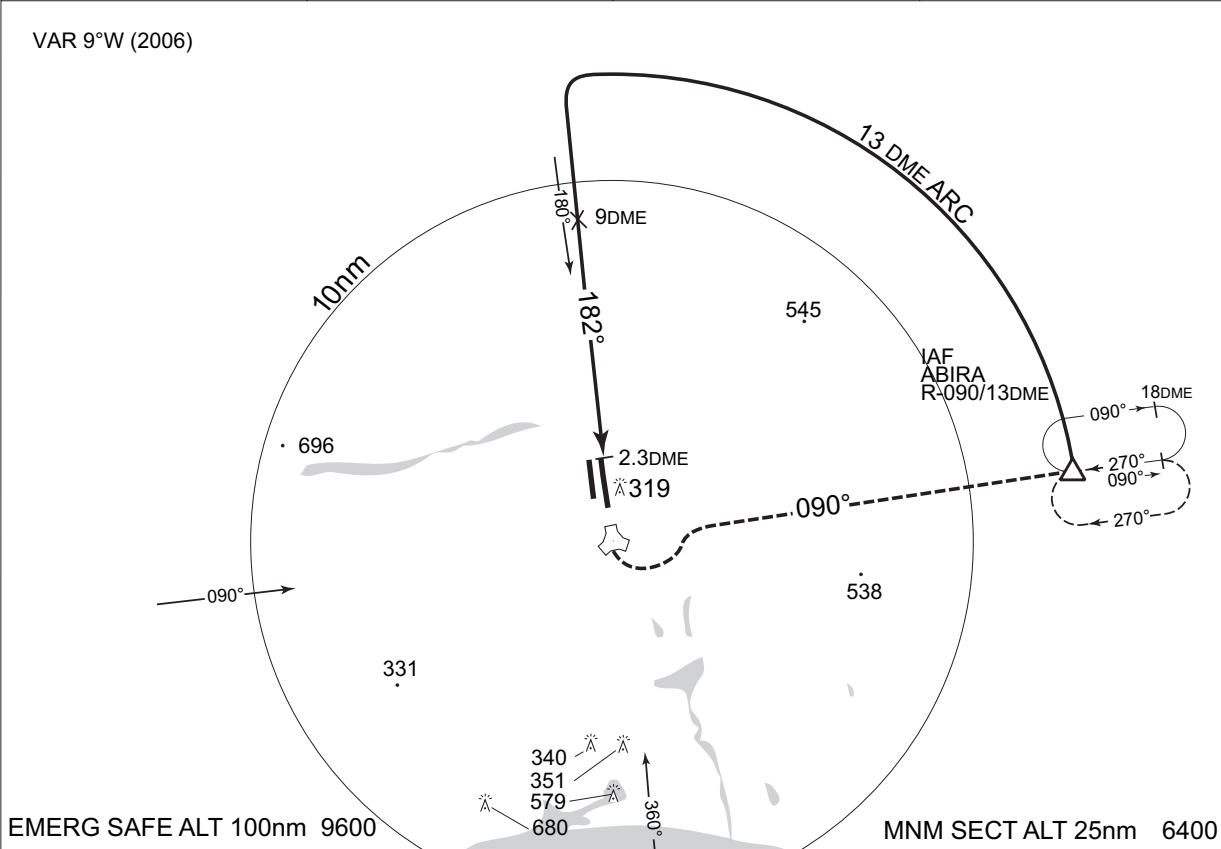
MINIMA		THR elev. 70	AD elev. 89	
CAT			CIRCLING	
	MDA(H)	RVR/ CMV	MDA(H)	VIS
A	600 (530)	1000	600 (511)	1600
B		1200		2400
C				3200
D		1600		

INSTRUMENT APPROACH CHART

RJCJ / CHITOSE

TACAN NR.4 RWY 18L

CHITOSE APP 124.7 - 120.1 362.3 - 305.7	CHITOSE TACAN CH-29 ZYT ≡≡≡ 42°45'52"N/141°40'25"E	CHITOSE TOWER 126.2 - 118.2 236.8 - 304.5 - 121.7G	RADAR AVAILABLE
---	--	--	-----------------

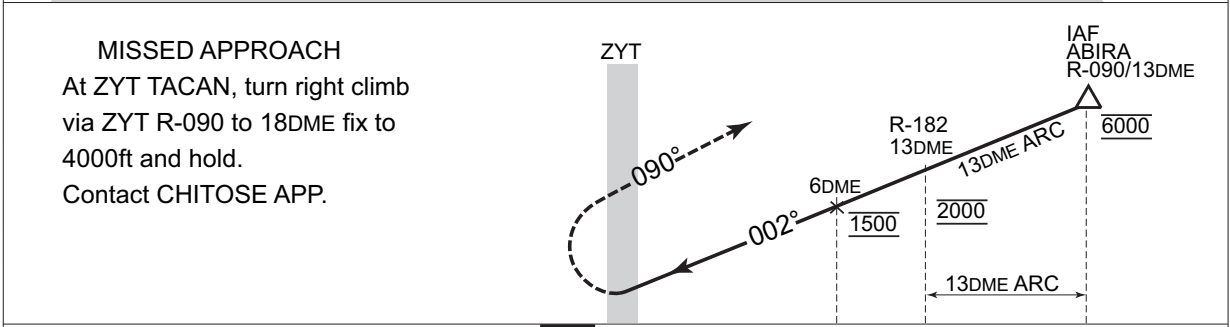
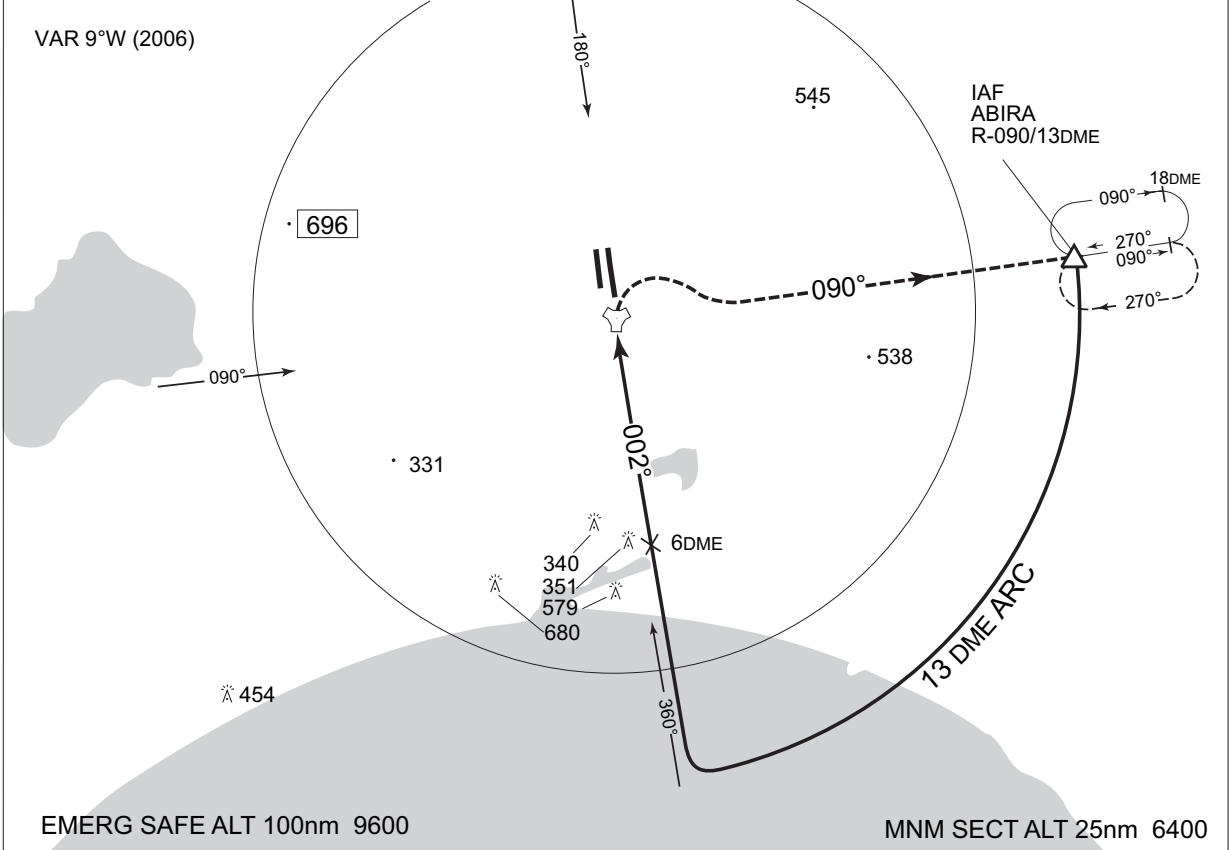


MINIMA	THR elev. 70	AD elev. 89		
CAT			CIRCLING	
	MDA(H)	RVR/CMV	MDA(H)	VIS
A	600 (530)	1000	600 (511)	1600
B		1200		2400
C		1600		3200
D				

INSTRUMENT APPROACH CHART

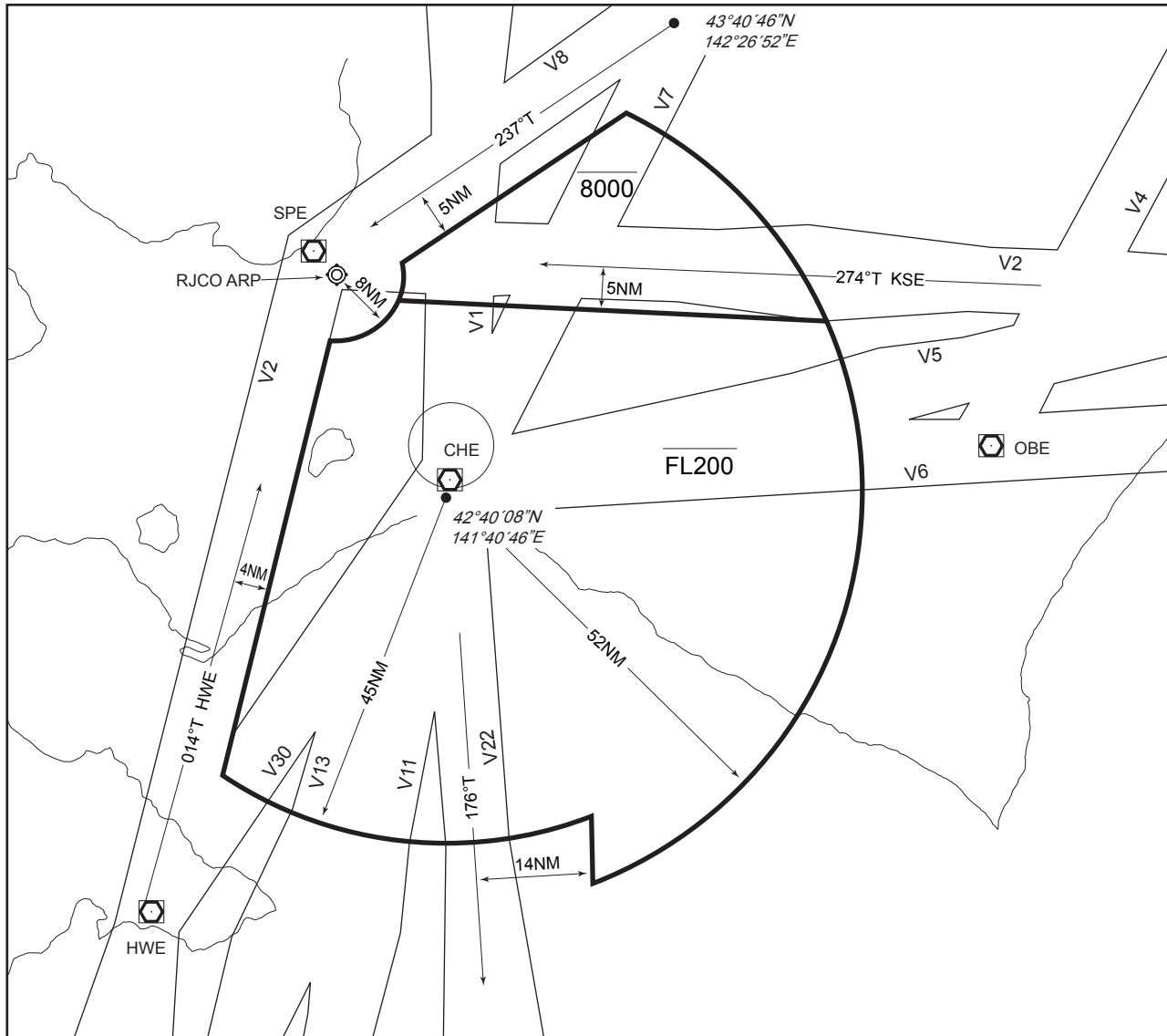
RJCJ / CHITOSE TACAN NR.5 RWY 36R

CHITOSE APP 124.7 - 120.1 362.3 - 305.7	CHITOSE TACAN CH-29 ZYT $\equiv \text{---} \text{---}$ 42°45'52"N/141°40'25"E	CHITOSE TOWER 126.2 - 118.2 236.8 - 304.5 - 121.7G	RADAR AVAILABLE
---	---	--	-----------------



MINIMA		THR elev. 85	AD elev. 89	
CAT			CIRCLING	
	MDA(H)	RVR/CMV	MDA(H)	VIS
A	600 (511)	1000	600 (511)	1600
B		1200		2400
C				3200
D		1600		

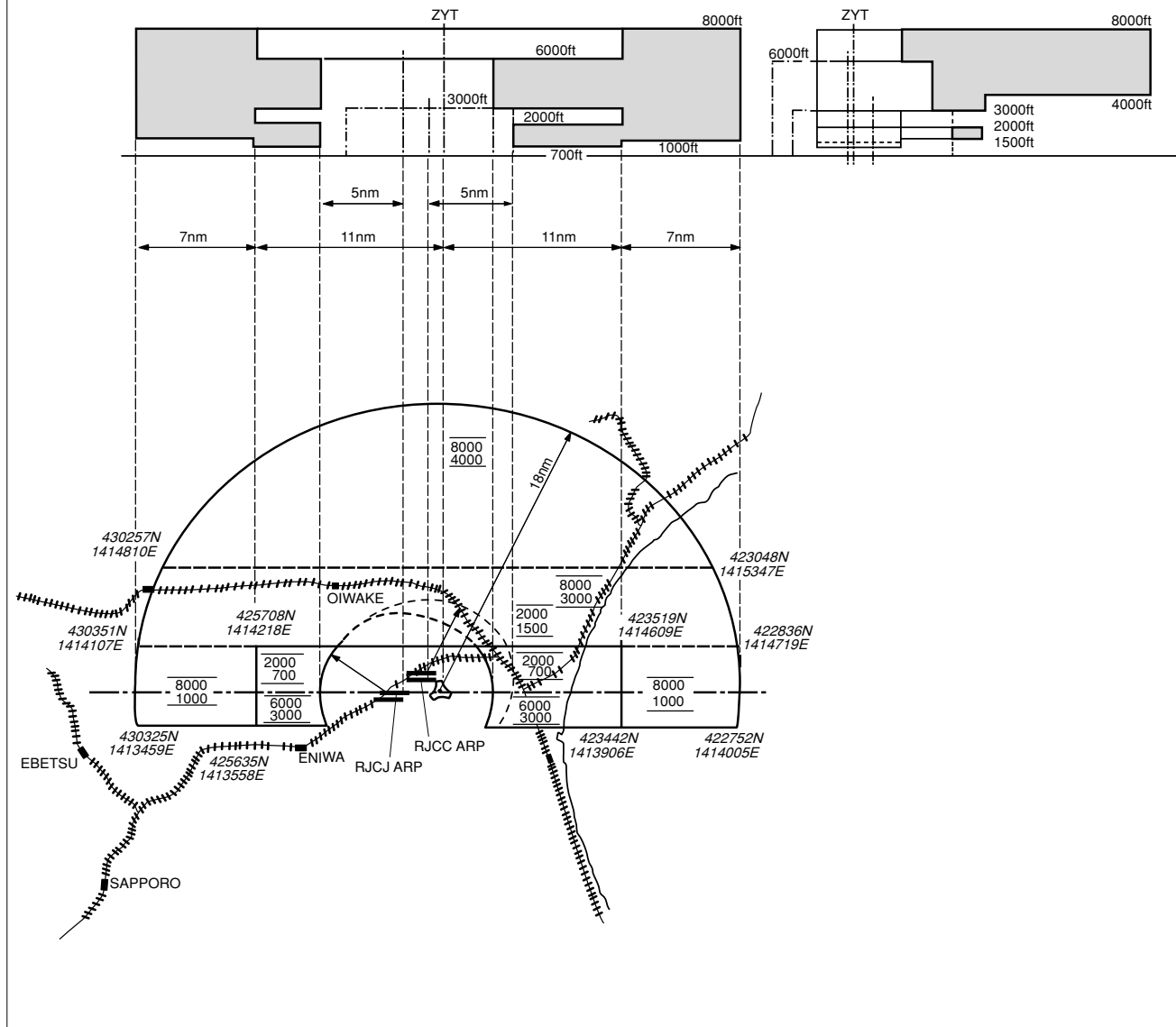
# 千歳進入管制区 Chitose Approach Control Area





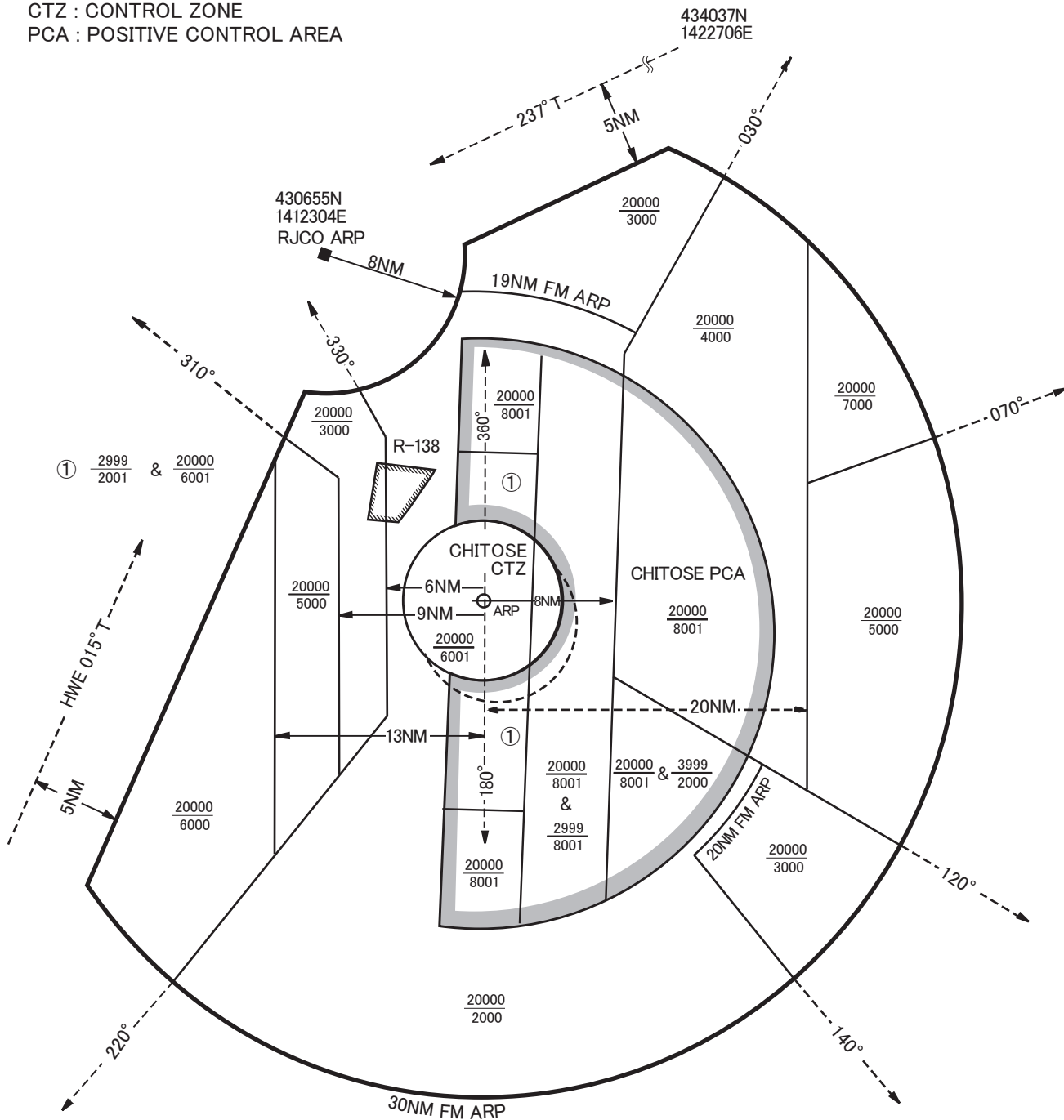
千歳特別管制区  
Chitose Positive Control Area

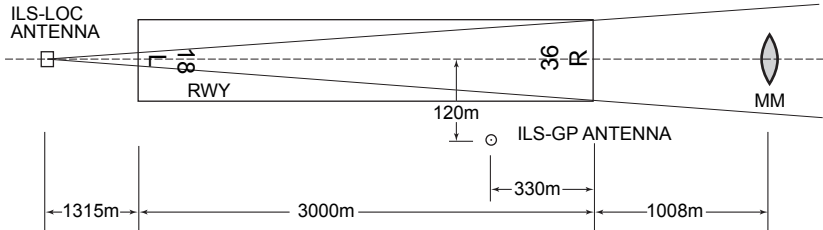
NAME	LATERAL LIMITS	UPPER LIMIT (AMSL)	UNIT PROVIDING SERVICE	REMARKS
		LOWER LIMIT (AMSL) M(ft)		
1	2	3	4	5
千歳 Chitose	下記に示される区域 The area shown below	2450 (8000) <hr/> 2450 (700)	Primary Chitose APP 120.1MHz 362.3MHz  Secondary Chitose TWR 118.8MHz 126.2MHz 236.8MHz	当該空域を飛行しようとする航空機は、千歳アプローチ又は千歳タワーに連絡し、コールサイン、現在位置、高度及び意図を通報し指示を受けること。  Pilot of aircraft operating in this area shall contact Chitose Approach or Chitose Tower for ATC instructions giving informations on aircraft identification, positions, altitude and pilot's intentions.



# 千歳ターミナルコントロールエリア Chitose Terminal Control Area

CTZ : CONTROL ZONE  
PCA : POSITIVE CONTROL AREA

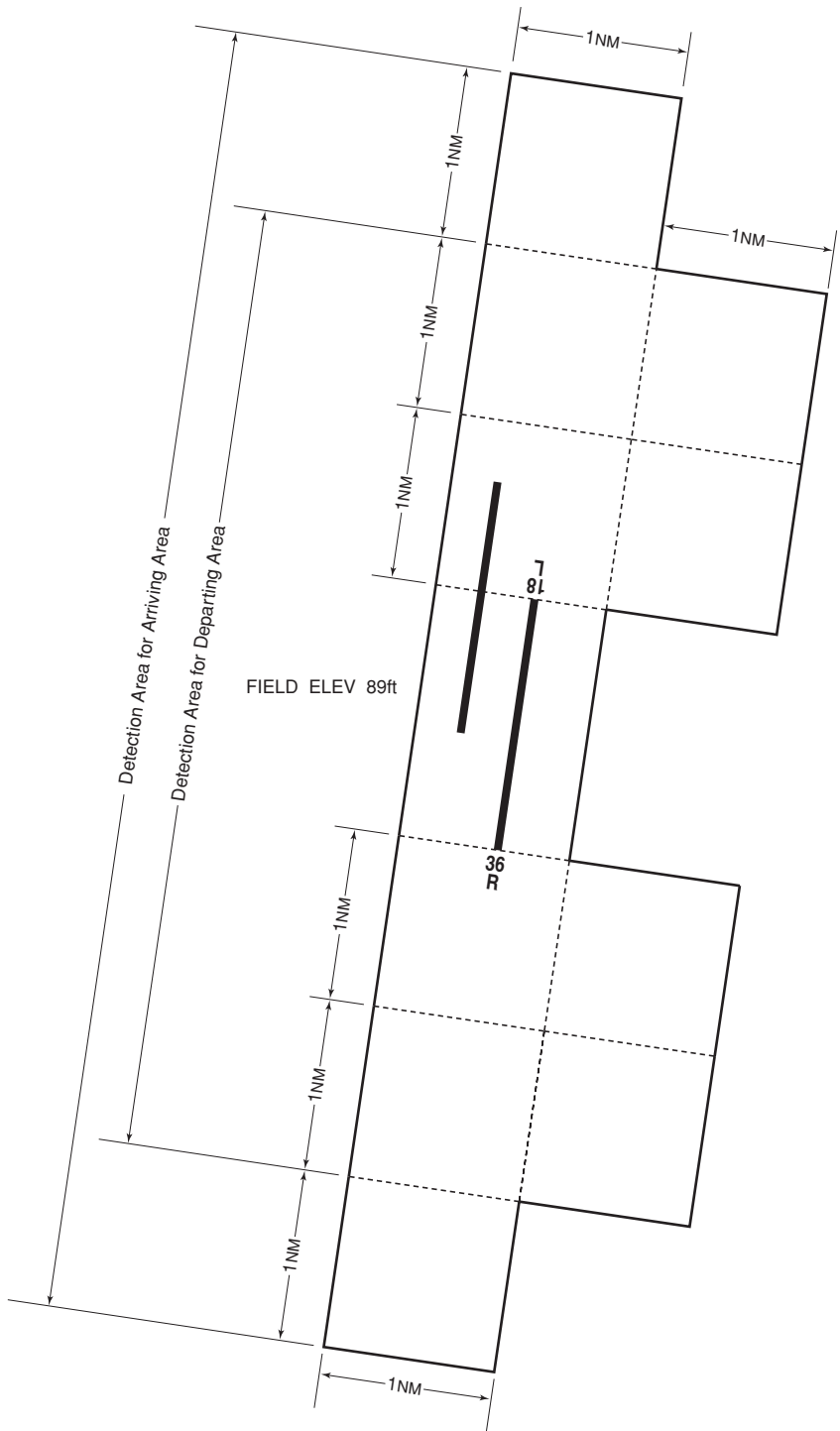




REMARKS: 1.LOC Beam BRG(MAG)  
 2.HGT of ILS REF datum  
 3.GP angle

002°  
 14.7m(48ft)  
 2.7°

**Airspace for the advisory service  
concerning low level wind shear (RWY18L/36R)**

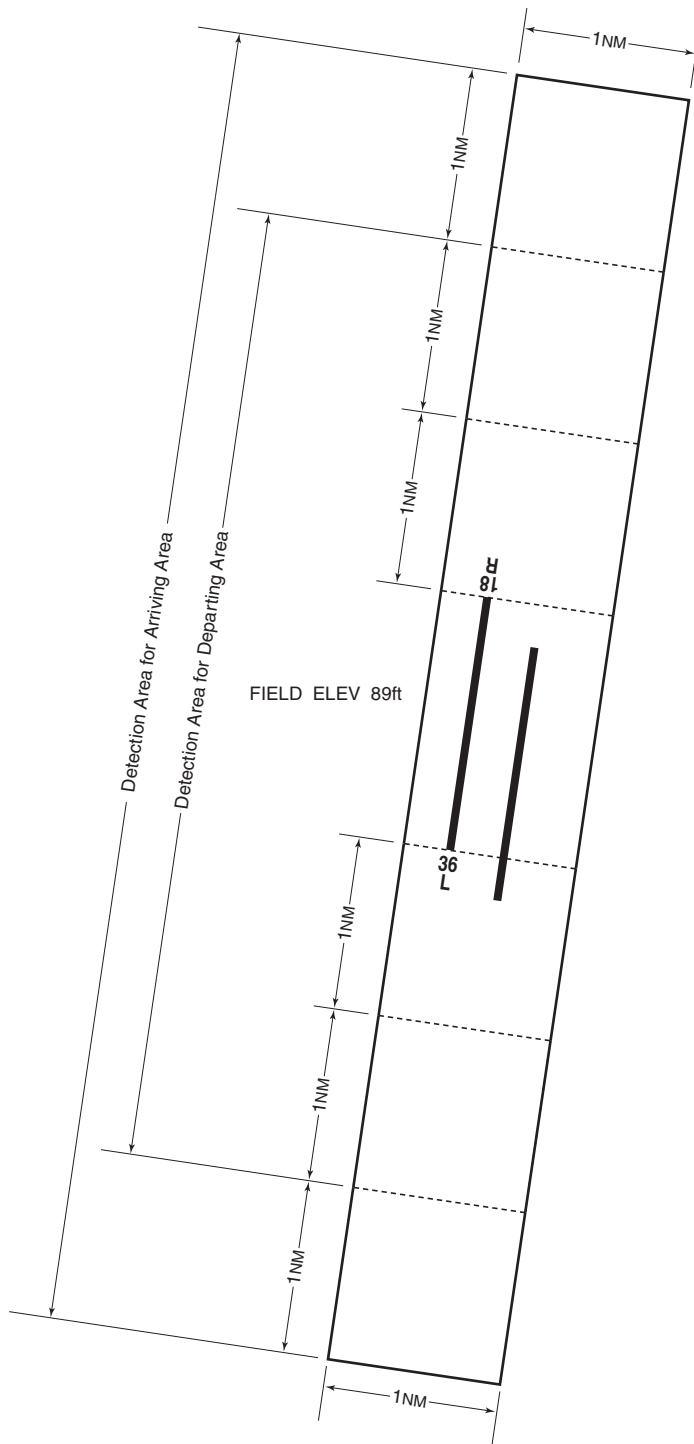


UPPER LIMIT : 1600ft above FIELD ELEV LEVEL

LOWER LIMIT : FIELD ELEV LEVEL

Only for Departing Aircraft

Airspace for the advisory service  
concerning low level wind shear (RWY18R/36L)



UPPER LIMIT : 1600ft above FIELD ELEV LEVEL  
LOWER LIMIT : FIELD ELEV LEVEL