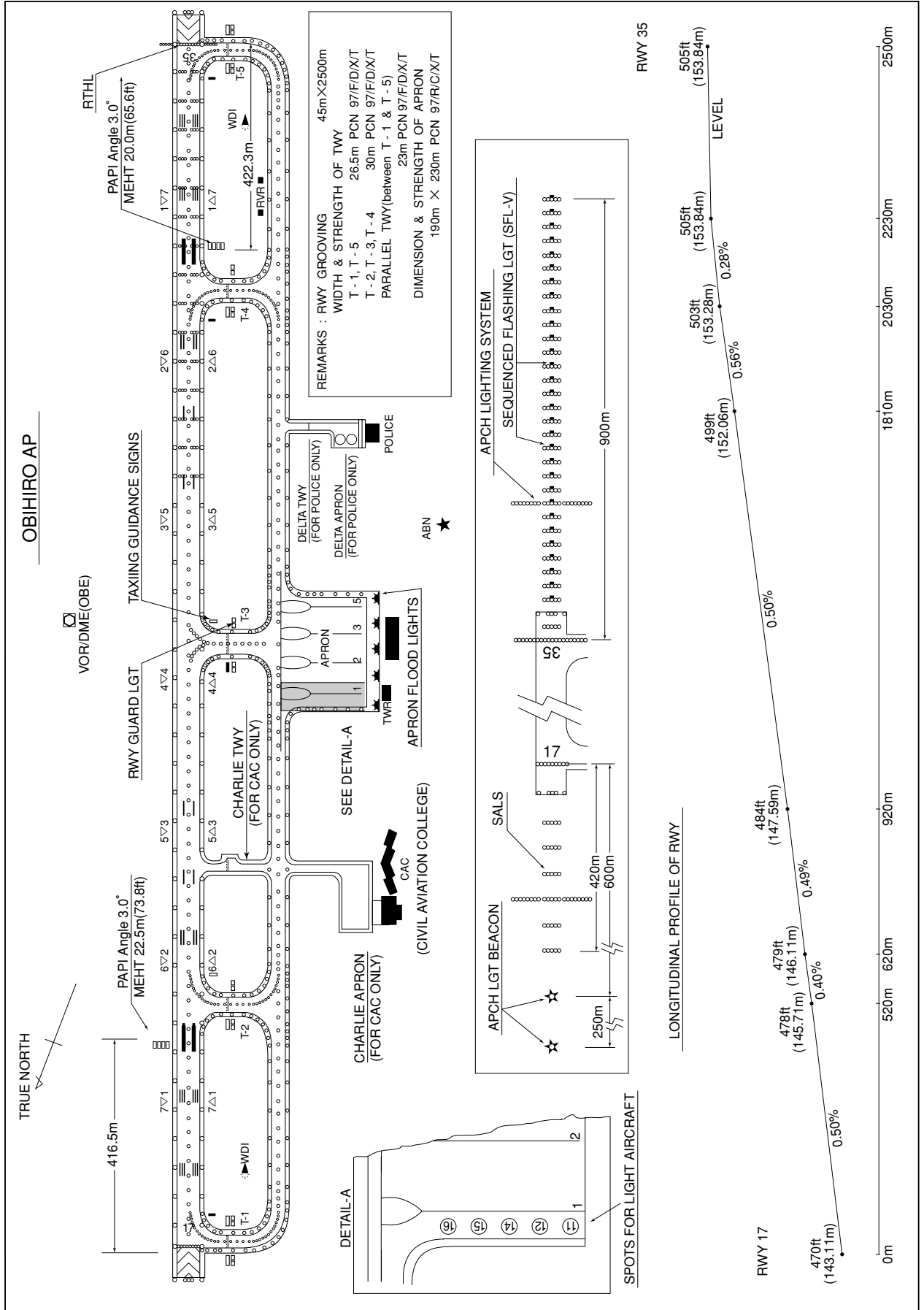


RJCB / OBIHIRO

AD CHART



STANDARD DEPARTURE CHART-INSTRUMENT

RJCB / OBIHIRO

SID

MEMANBETSU FIVE DEPARTURE

RWY 17 : Turn left,....

RWY 35 : Turn right,....

....Climb via OBE R039 to TBE VOR/DME.

Cross OBE R039/35.0DME (KSE R304) at assigned altitude.

Note : When take off RWY 35, following climb gradient should be maintained until 1500FT.

Speed (Knots)	60	90	120	150	180	210
Rate (Feet/Min)	300	450	600	750	900	1050

KUSHIRO THREE DEPARTURE

RWY 17 : Turn left,....

RWY 35 : Turn right,....

....Climb via OBE R076 to KSE VOR/DME.

Cross OBE R076/20.0DME at or above 5000FT.

Note : When take off RWY 35, following climb gradient should be maintained until 1500FT.

Speed (Knots)	60	90	120	150	180	210
Rate (Feet/Min)	300	450	600	750	900	1050

NOTAK THREE DEPARTURE

RWY 17 : Turn left,....

RWY 35 :

....Climb via OBE R345 to NOTAK.

Cross NOTAK at or above 6000FT.

Note : When take off RWY 35, following climb gradient should be maintained until 1500FT.

Speed (Knots)	60	90	120	150	180	210
Rate (Feet/Min)	300	450	600	750	900	1050

ALICE TWO DEPARTURE

RWY 17 :

RWY 35 : Turn right,....

....Climb via OBE R169 to ERIMO, via KSE R200 to ALICE,

Cross ALICE at assigned altitude.

Note : When take off RWY 35, following climb gradient should be maintained until 1500FT.

Speed (Knots)	60	90	120	150	180	210
Rate (Feet/Min)	300	450	600	750	900	1050

STANDARD DEPARTURE CHART-INSTRUMENT

RJCBA / OBIHIRO

SID

OBIHIRO REVERSAL SIX DEPARTURE

RWY 17 : Turn left,....

RWY 35 : Turn right,....

....Climb via OBE R130, turn left within OBE 15.0DME to intercept and proceed via OBE R105 to OBE VOR/DME

Cross OBE VOR/DME at or above 6000FT.

Note : When take off RWY 35, following climb gradient should be maintained until 1500FT.

Speed (Knots)	60	90	120	150	180	210
Rate (Feet/Min)	300	450	600	750	900	1050

RACKO ONE DEPARTURE

RWY 17 :

RWY 35 : Turn right,....

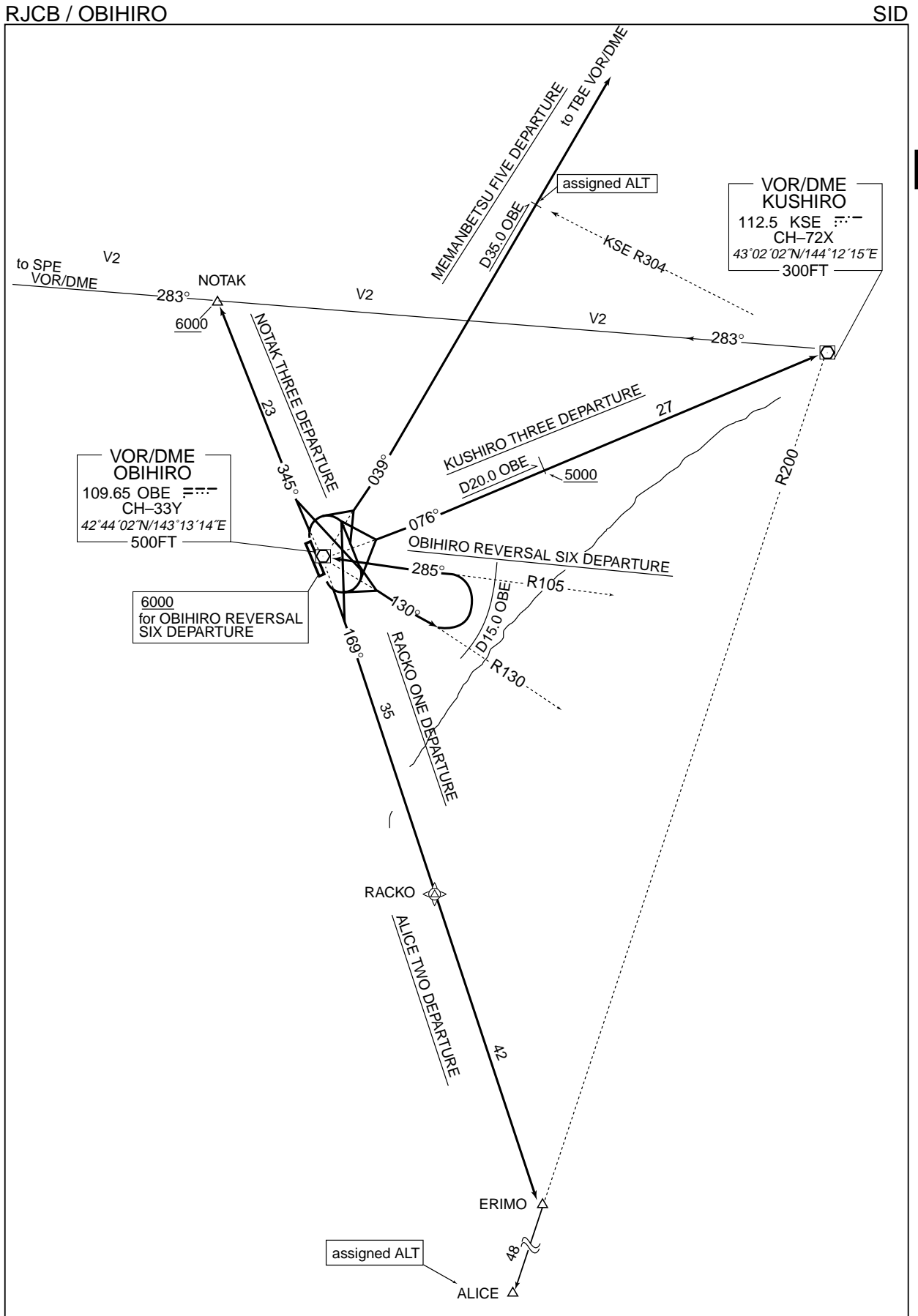
....Climb via OBE R169 to RACKO.

Cross RACKO at or above 10000FT.

Note : When take off RWY 35, following climb gradient should be maintained until 1500FT.

Speed (Knots)	60	90	120	150	180	210
Rate (Feet/Min)	300	450	600	750	900	1050

STANDARD DEPARTURE CHART-INSTRUMENT



STANDARD ARRIVAL CHART-INSTRUMENT

RJCB / OBIHIRO

STAR

WINE ARRIVAL

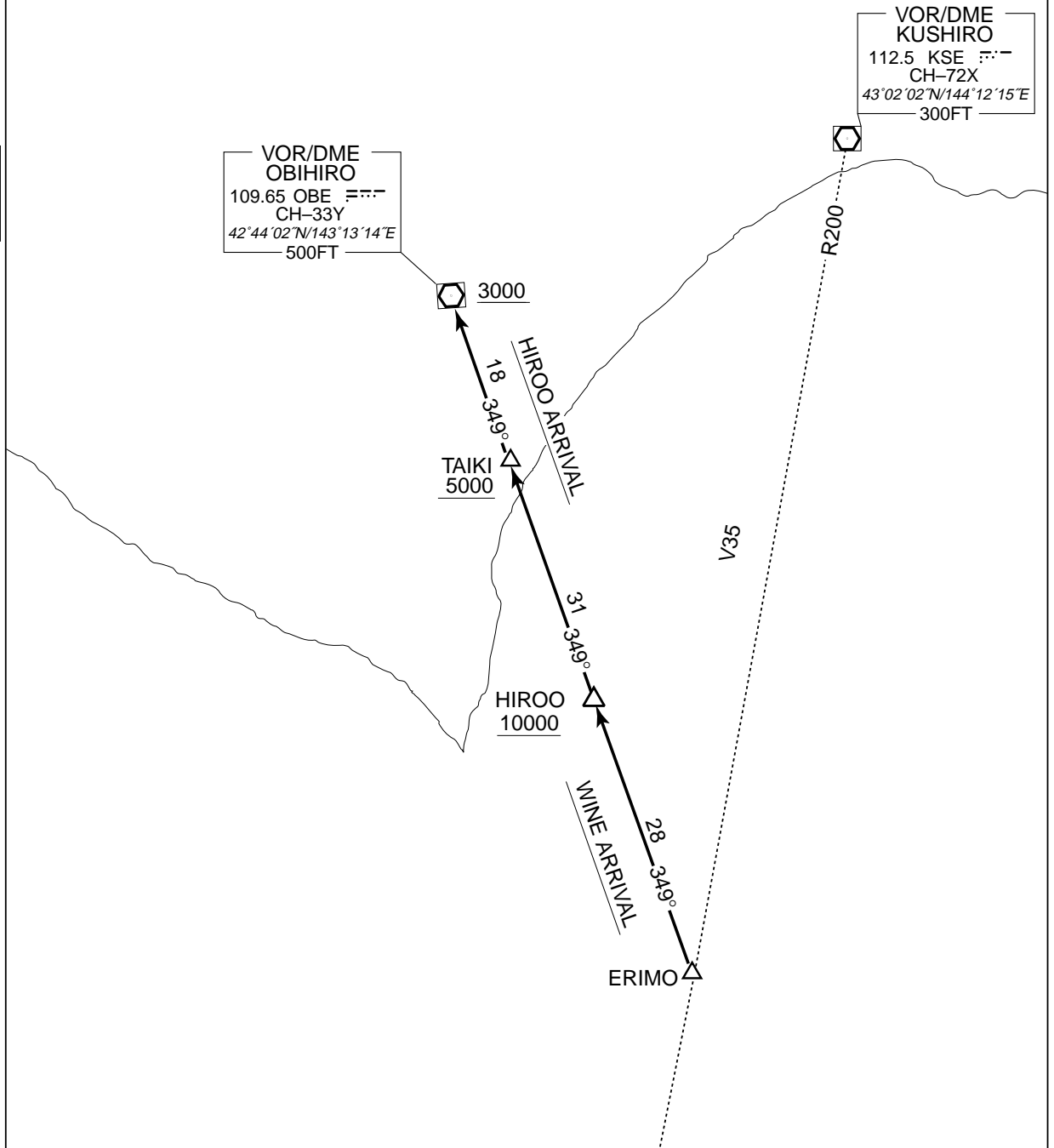
From over ERIMO, proceed via OBE R169 to TAIKI or OBE VOR/DME via HIROO.

Cross HIROO at or above 10000FT, cross TAIKI at or above 5000FT, cross OBE VOR/DME at or above 3000FT.

HIROO ARRIVAL

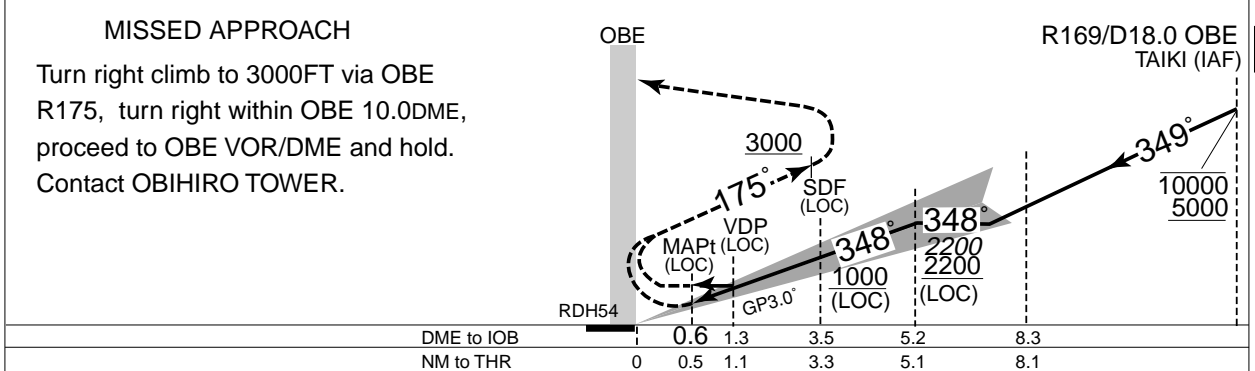
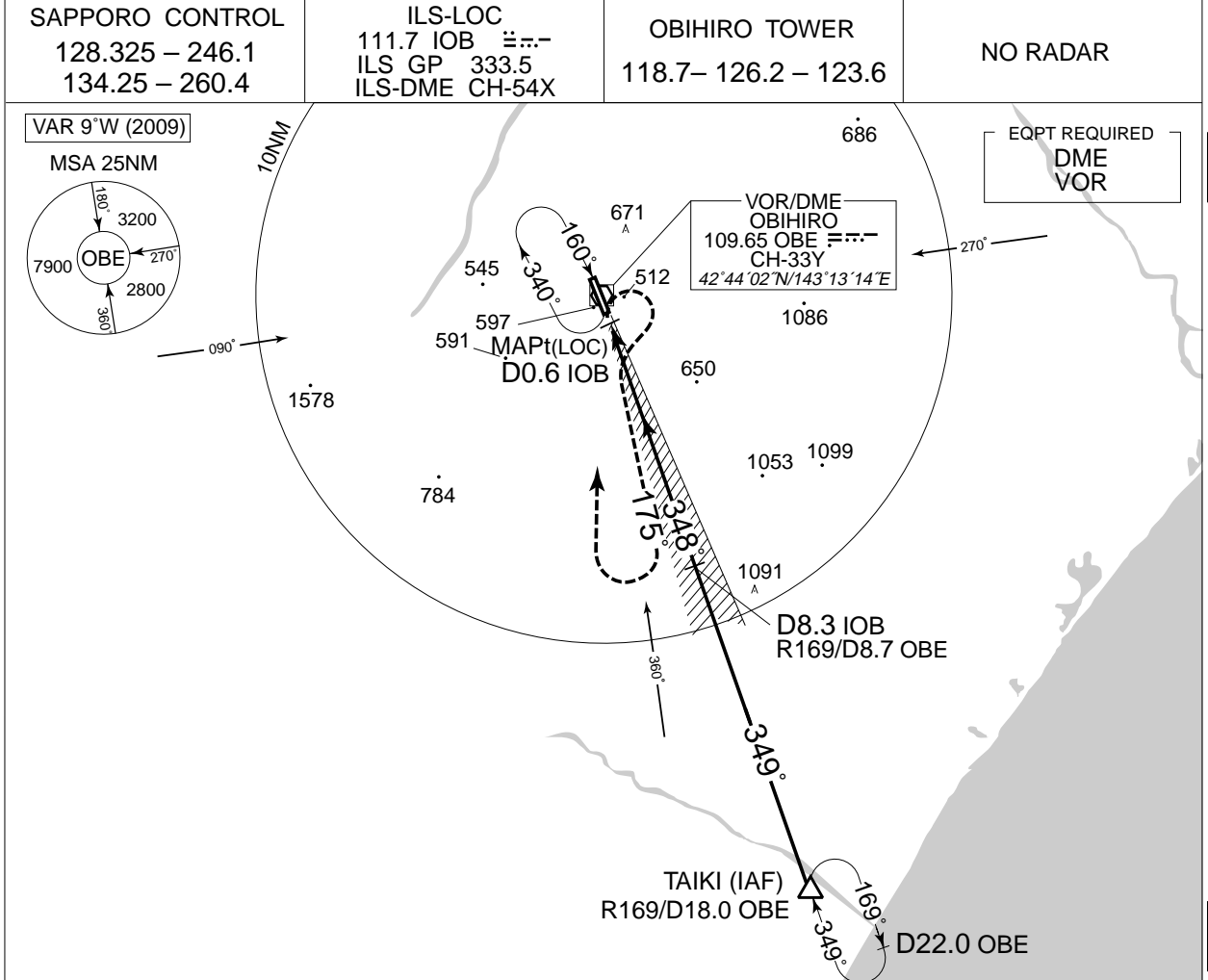
From over HIROO proceed via OBE R169 to TAIKI or OBE VOR/DME.

Cross TAIKI at or above 5000FT, cross OBE VOR/DME at or above 3000FT.



INSTRUMENT APPROACH CHART

RJCB / OBIHIRO ILS Z or LOC Z RWY 35



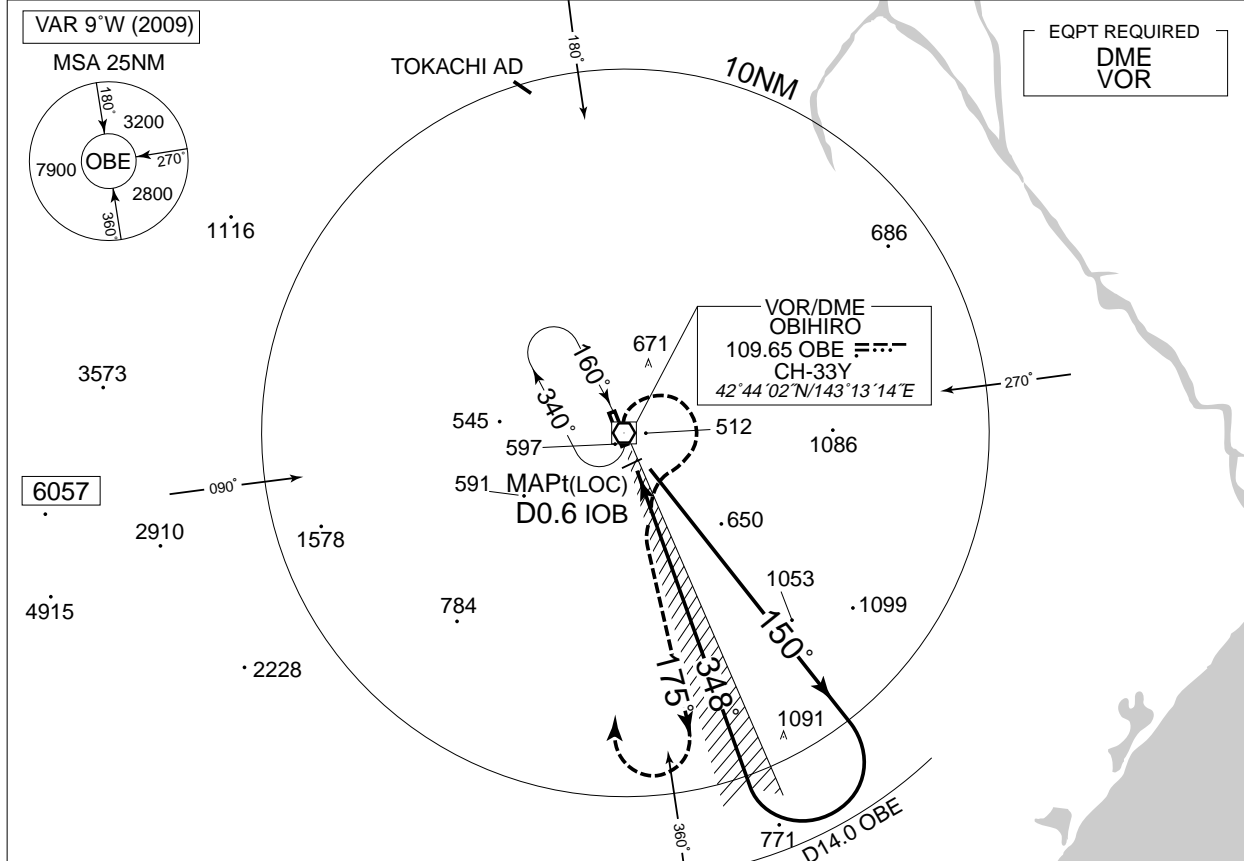
MINIMA		THR elev. 505		AD elev. 490		
CAT	CAT I		LOC		CIRCLING	
	DA(H)	RVR/CMV	MDA(H)	RVR/CMV	MDA(H)	VIS
A	705 (200)	550	900 (410)	1000	900	1600
B					940 (450)	
C					1050 (560)	
D					1400	

INSTRUMENT APPROACH CHART

RJCB / OBIHIRO

ILS Y or LOC Y RWY 35

SAPPORO CONTROL 128.325 – 246.1 134.25 – 260.4	ILS-LOC 111.7 IOB $\equiv \equiv \equiv$ ILS GP 333.5 ILS-DME CH-54X	OBIHIRO TOWER 118.7 – 126.2 – 123.6	NO RADAR
--	---	--	----------



MISSED APPROACH
Turn right climb to 3000FT via OBE R175, turn right within OBE 10.0DME, proceed to OBE VOR/DME and hold.
Contact OBIHIRO TOWER.

Remain within D14.0 OBE

DME to IOB	0.6	1.3	3.5	5.2
NM to THR	0	0.5	1.1	3.3

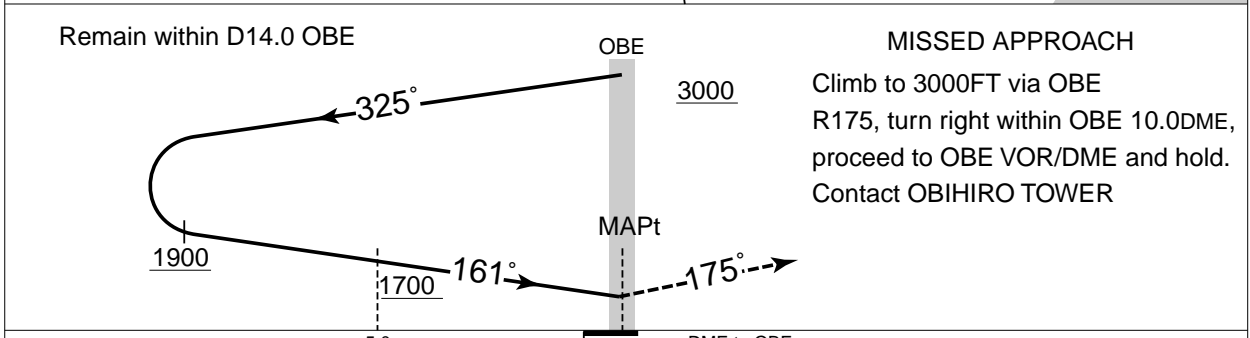
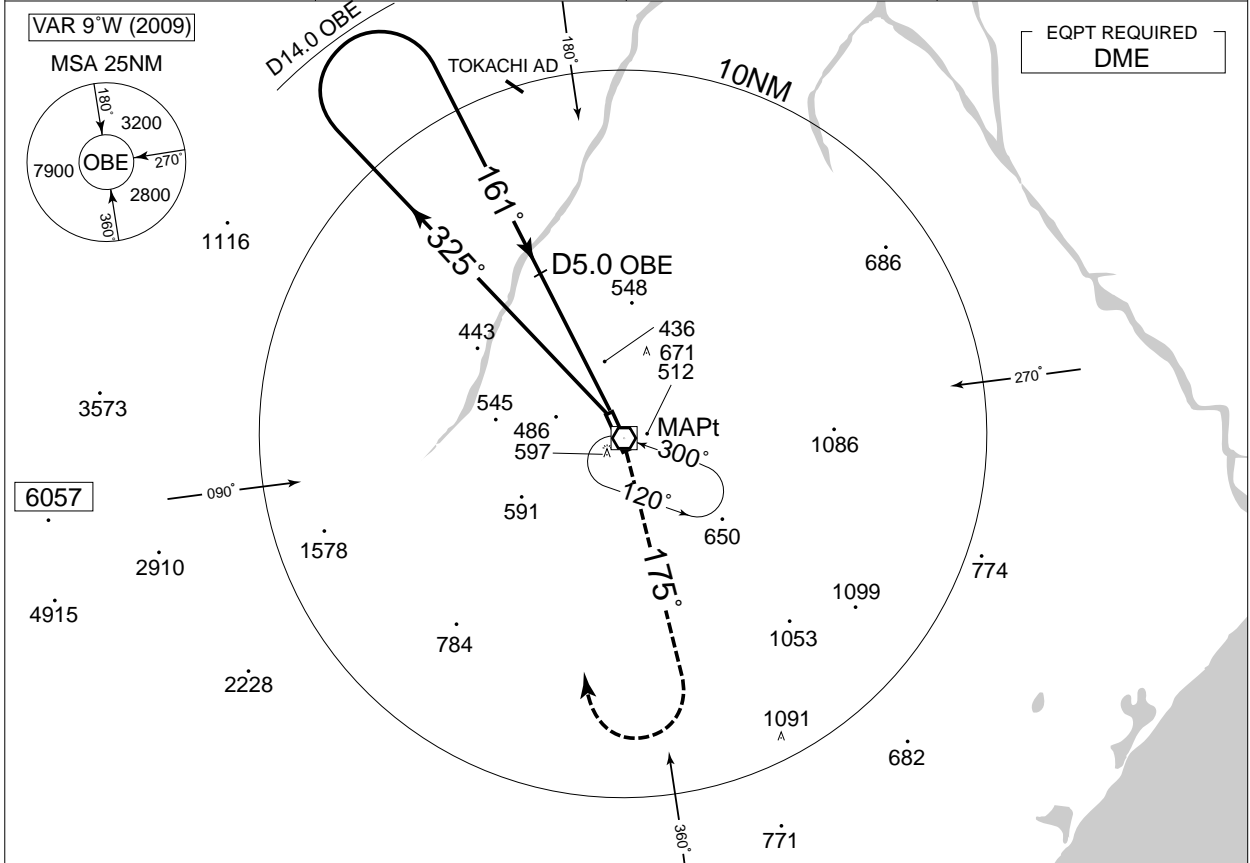
MINIMA		THR elev. 505		AD elev. 490		
CAT	CAT I		LOC		CIRCLING	
	DA(H)	RVR/CMV	MDA(H)	RVR/CMV	MDA(H)	VIS
A	705 (200)	550	900 (410)	900	900 (410)	1600
B				1000	940 (450)	
C				1050 (560)	2400	
D				1400	3200	

INSTRUMENT APPROACH CHART

RJCB / OBIHIRO

VOR RWY 17

SAPPORO CONTROL 128.325 – 246.1 134.25 – 260.4	OBIHIRO VOR/DME 109.65 OBE $\equiv \dots \equiv$ CH- 33Y 42°44'02"N/143°13'14"E	OBIHIRO TOWER 118.7 – 126.2 – 123.6	NO RADAR
--	--	--	----------



5.0	0	DME to OBE
4.3		NM to THR

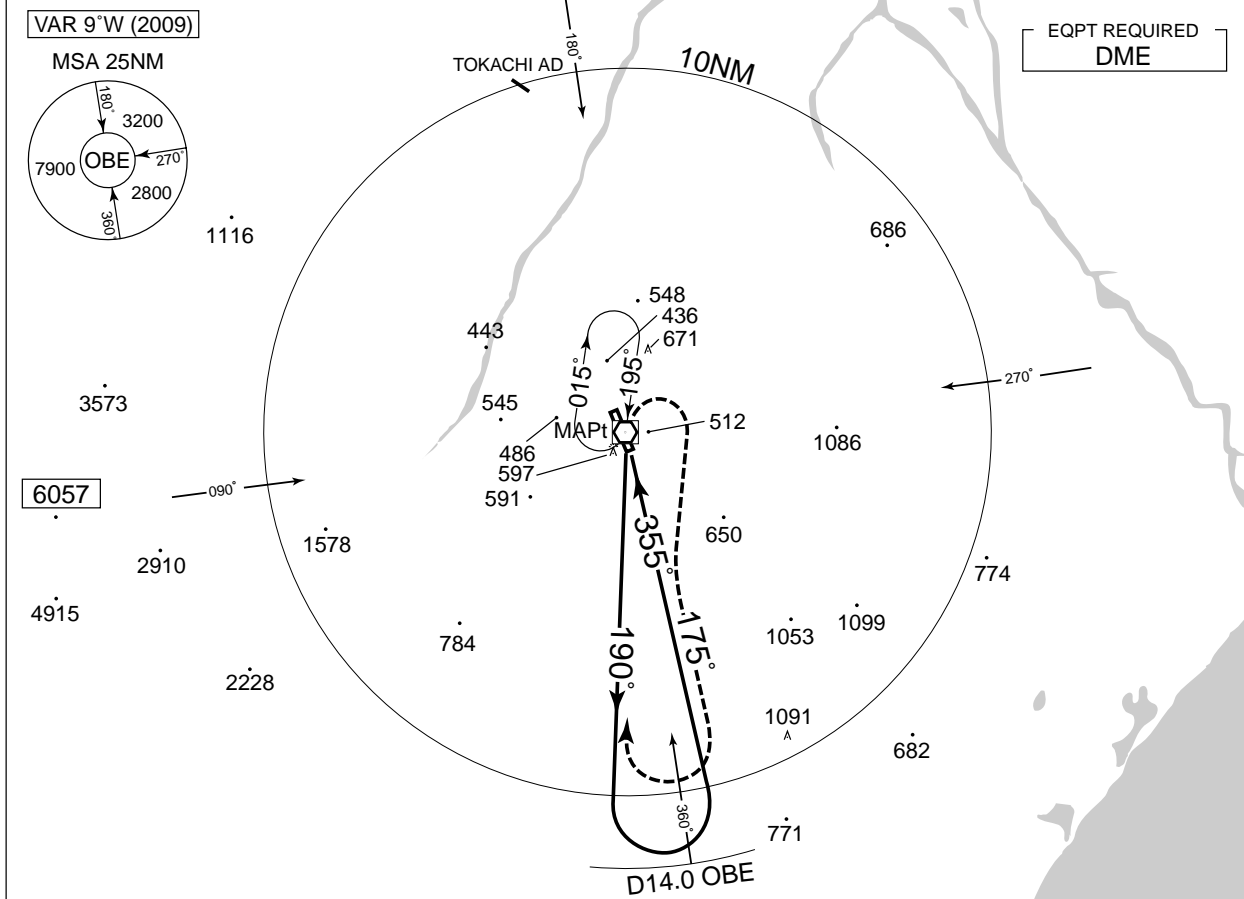
MINIMA		THR elev. 470	AD elev. 490		
CAT			CIRCLING		
	MDA(H)	CMV	MDA(H)	VIS	
A	980 (510)	1400	980 (490)	1600	
B		1500			
C		1600	1050 (560)	2400	
D		1800			

INSTRUMENT APPROACH CHART

RJCB / OBIHIRO

VOR RWY 35

SAPPORO CONTROL 128.325 – 246.1 134.25 – 260.4	OBIHIRO VOR/DME 109.65 OBE $\equiv \equiv \equiv$ CH-33Y 42°44'02"N/143°13'14"E	OBIHIRO TOWER 118.7 – 126.2 – 123.6	NO RADAR
--	--	--	----------



MISSED APPROACH
Turn right climb to 3000FT via OBE R175, turn right within OBE 10.0DME, proceed to OBE VOR/DME and hold. Contact OBIHIRO TOWER.

Remain within D14.0 OBE

DME to OBE	0	5.0	9.0
NM to THR	0	4.3	8.3

MINIMA		THR elev. 505	AD elev. 490
CAT			CIRCLING
	MDA(H)	RVR/CMV	MDA(H) VIS
A	980 (490)	1000	980 (490) 1600
B		1200	
C			1600
D		1050 (560)	

RJCB / OBIHIRO

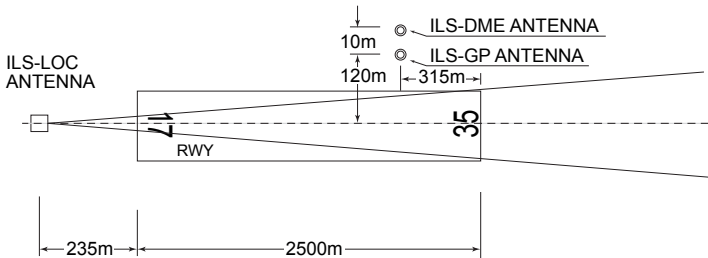
Visual REP



Call sign	BRG / DIST from ARP	Remarks
更 別 Sarabetsu	203°/5.4NM	更別村役場 Sarabetsu Village office
駒 畠 Komahata	138°/5.4NM	五差路 Intersection
糠 内 Nukanai	065°/5.7NM	猿別川と糠内川の合流点 The confluence of the Sarubetsu and Nukanai rivers
中 札 内 Nakasatsunai	252°/5NM	札内川の中札内橋 Bridge
幕 別 Makubetsu	040°/12NM	JR駅 JR Station
芽 室 Memuro	328°/13.5NM	JRの鉄橋（芽室駅から西1.5NM） Bridge
茂 岩 橋 Moiwabashi	080°/13.5NM	十勝川の茂岩橋 Bridge

OBIHIRO AP

ILS for RWY35



- REMARKS :
- | | |
|-------------------------|----------------|
| 1. LOC beam BRG(MAG) | 348° |
| 2. HGT of ILS REF datum | 16.5m (54ft) |
| 3. GP angle | 3.0° |
| 4. ELEV of ILS-DME | 158.4m (520ft) |