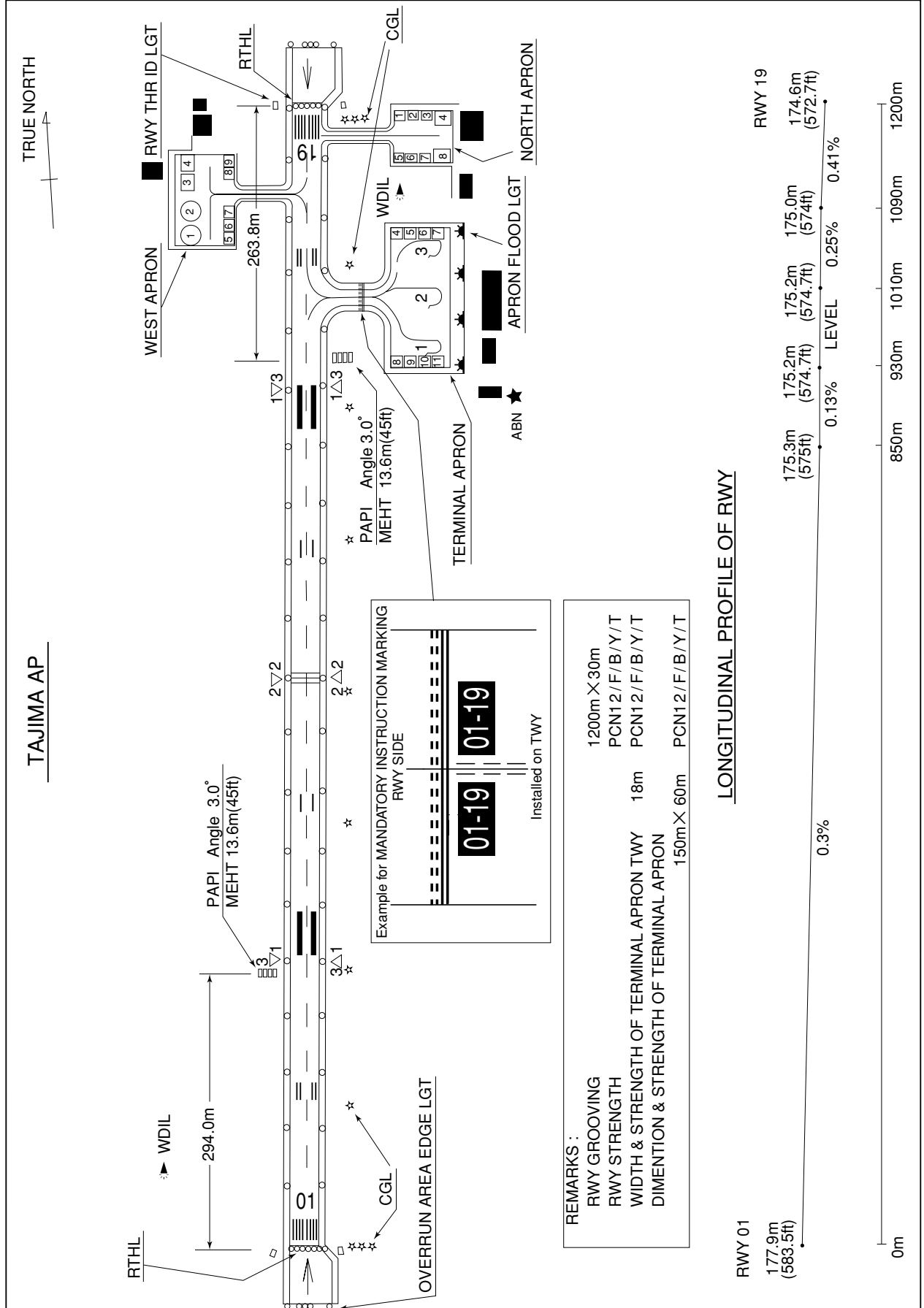


RJBT / TAJIMA

AD CHART



STANDARD DEPARTURE CHART-INSTRUMENT

RJBT/TAJIMA

SID

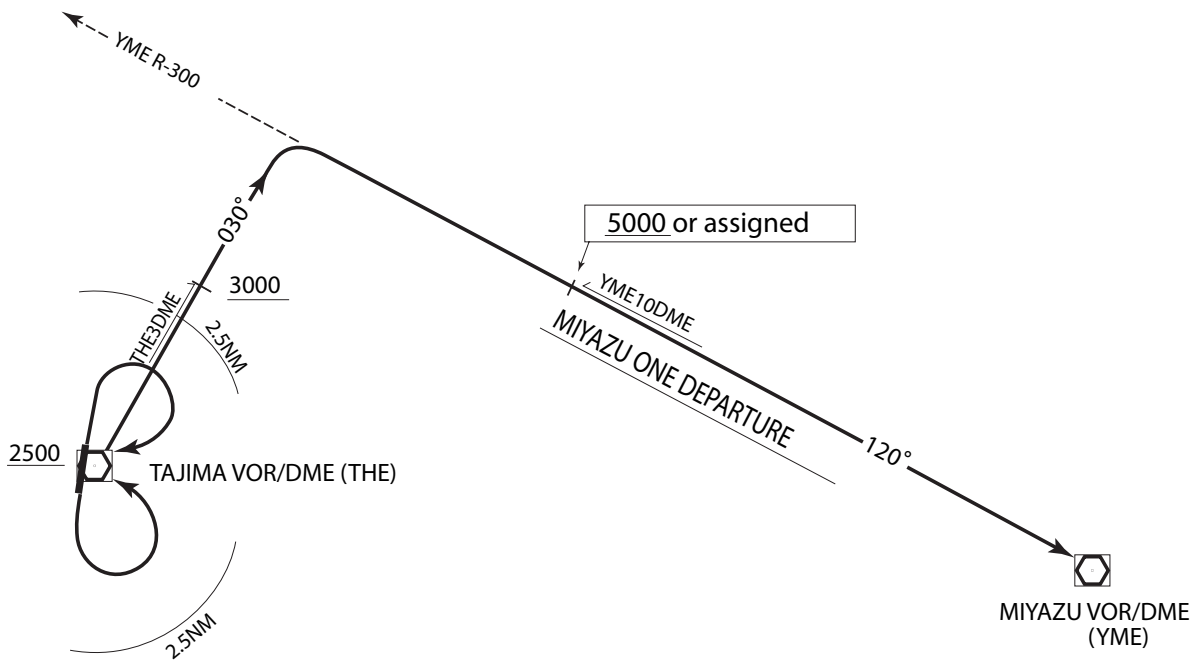
MIYAZU ONE DEPARTURE

RWY 01 : Turn right within 2.5NM, then....

RWY 19 : Turn left within 2.5NM, then....

....Proceed to THE VOR/DME, then via THE R-030 to intercept and proceed via YME R-300 to YME VOR/DME.

Cross THE VOR/DME at or above 2,500FT, cross THE R-030/3DME at or above 3,000ft and cross YME R-300/10DME at or above 5,000ft or assigned altitude.



STANDARD DEPARTURE CHART-INSTRUMENT

RJBT/TAJIMA

SID

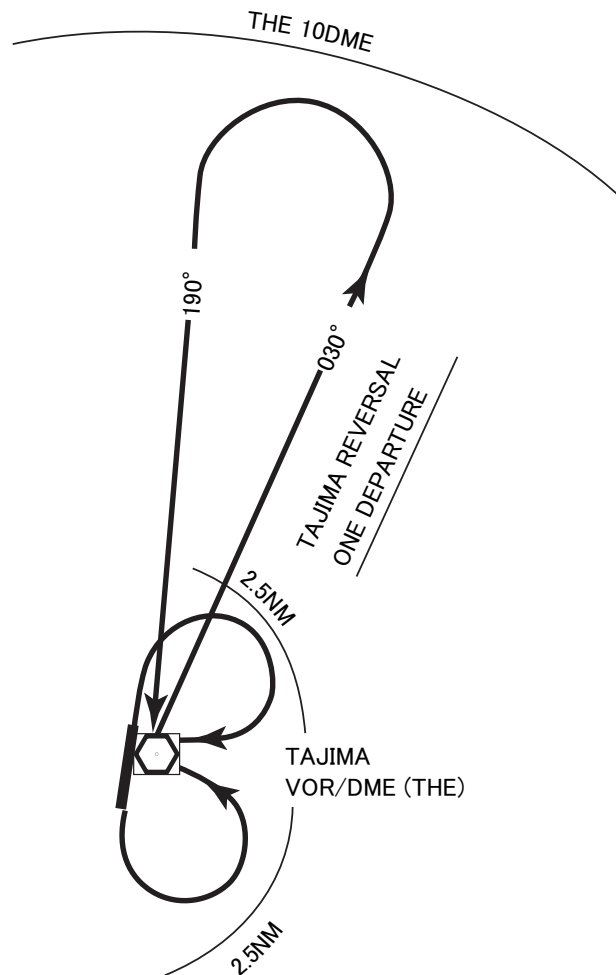
TAJIMA REVERSAL ONE DEPARTURE

RWY 01 : Turn right within 2.5NM, then....

RWY 19 : Turn left within 2.5NM, then....

....Proceed to THE VOR/DME, climb via THE R-030, turn left to intercept and proceed via THE R-010 to THE VOR/DME within THE 10DME.

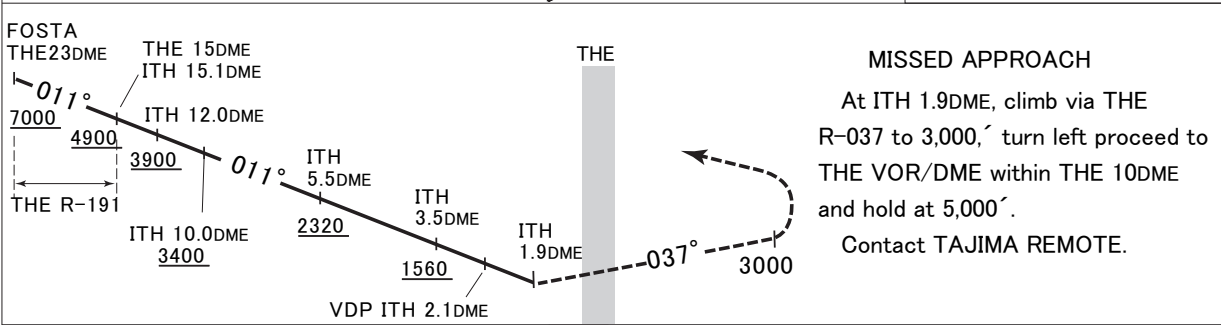
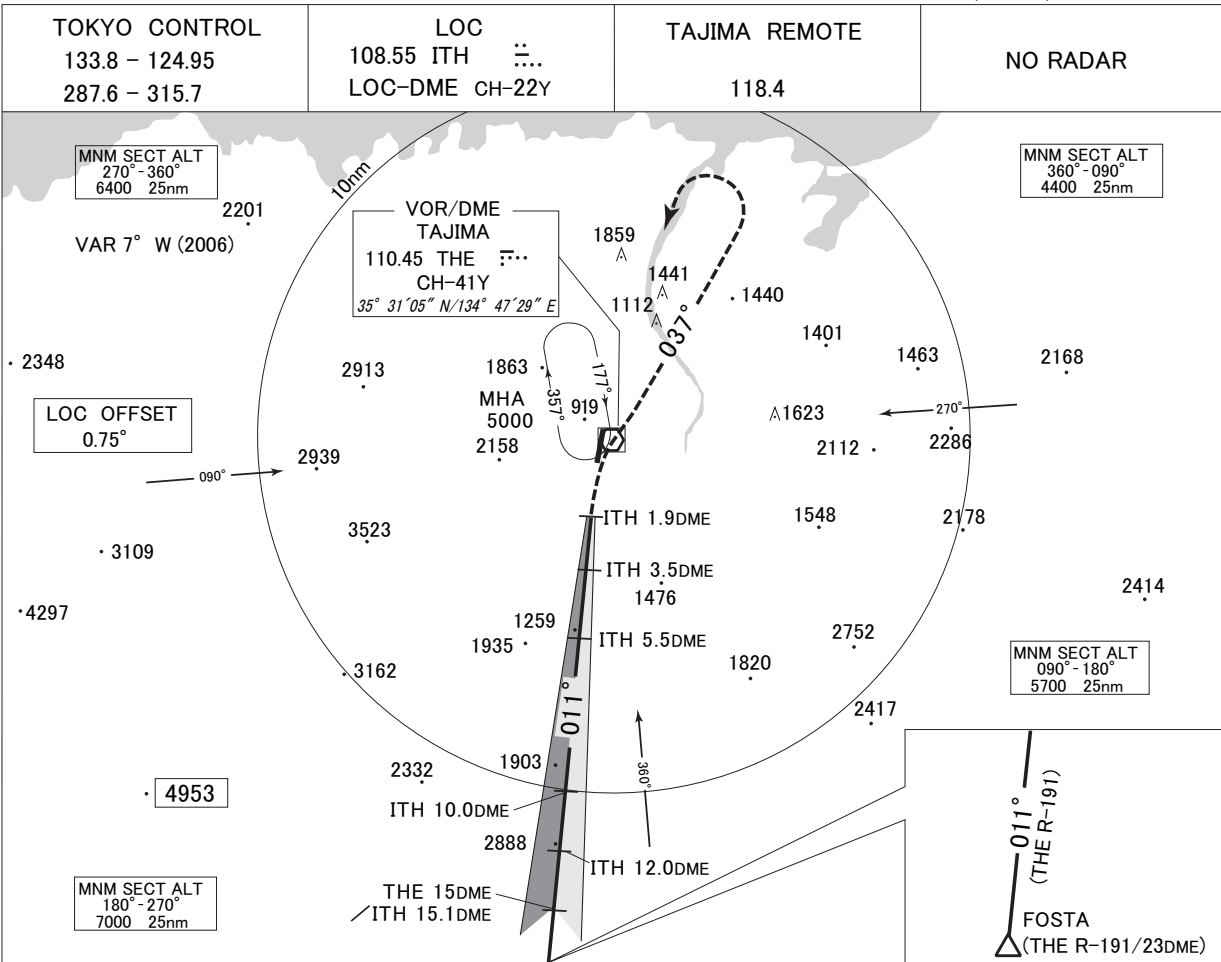
Cross THE VOR/DME at or above 2,500ft and recross THE R-VOR/DME at or above 5,000ft or specified altitude.



INSTRUMENT APPROACH CHART

RJBT / TAJIMA

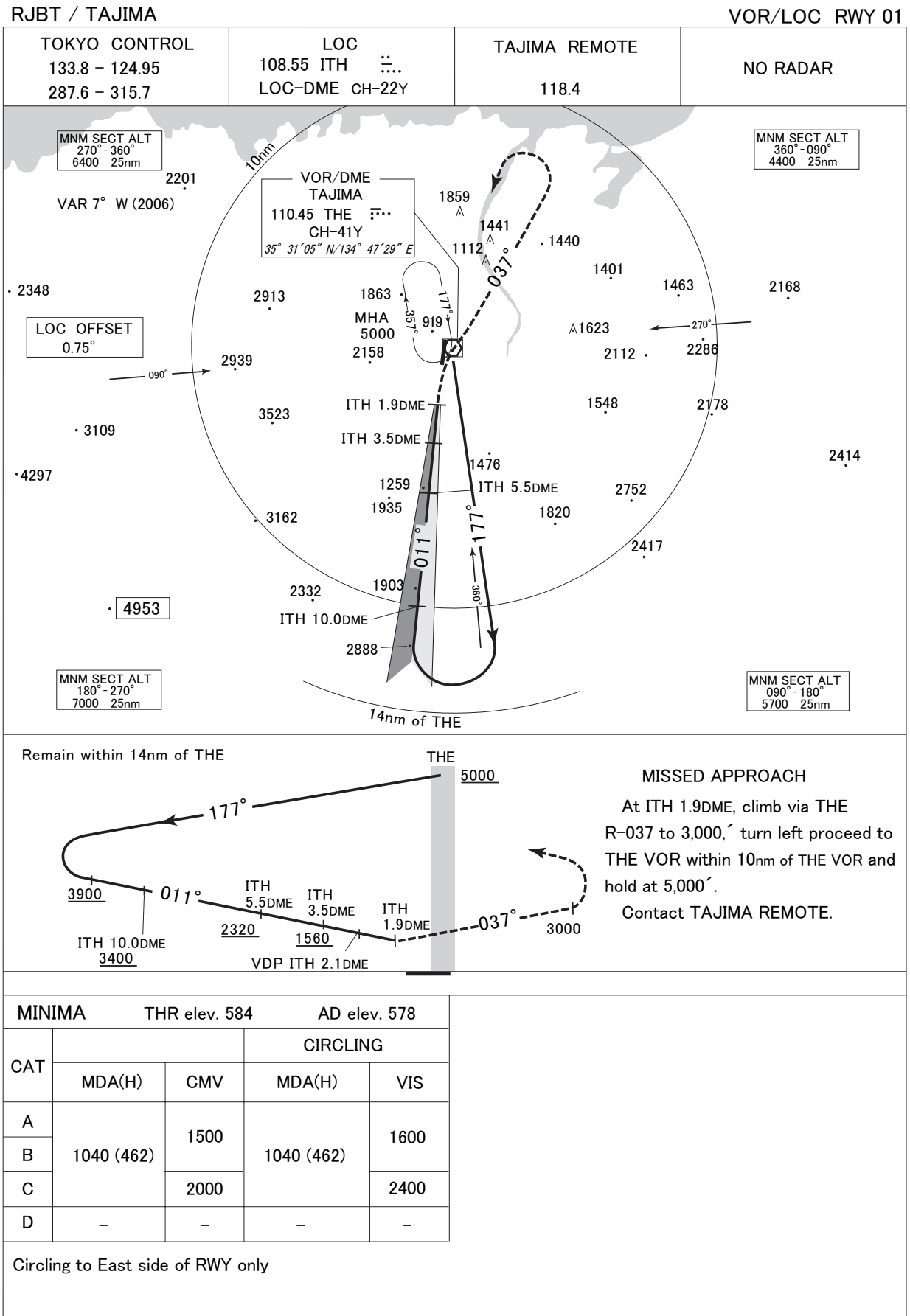
VOR/DME/LOC RWY 01



MINIMA	THR elev. 584	AD elev. 578		
CAT	CIRCLING			
	MDA(H)	CMV	MDA(H)	VIS
A	1040 (462)	1500	1040 (462)	1600
B		2000		2400
C	-	-	-	-
D	-	-	-	-

Circling to East side of RWY only

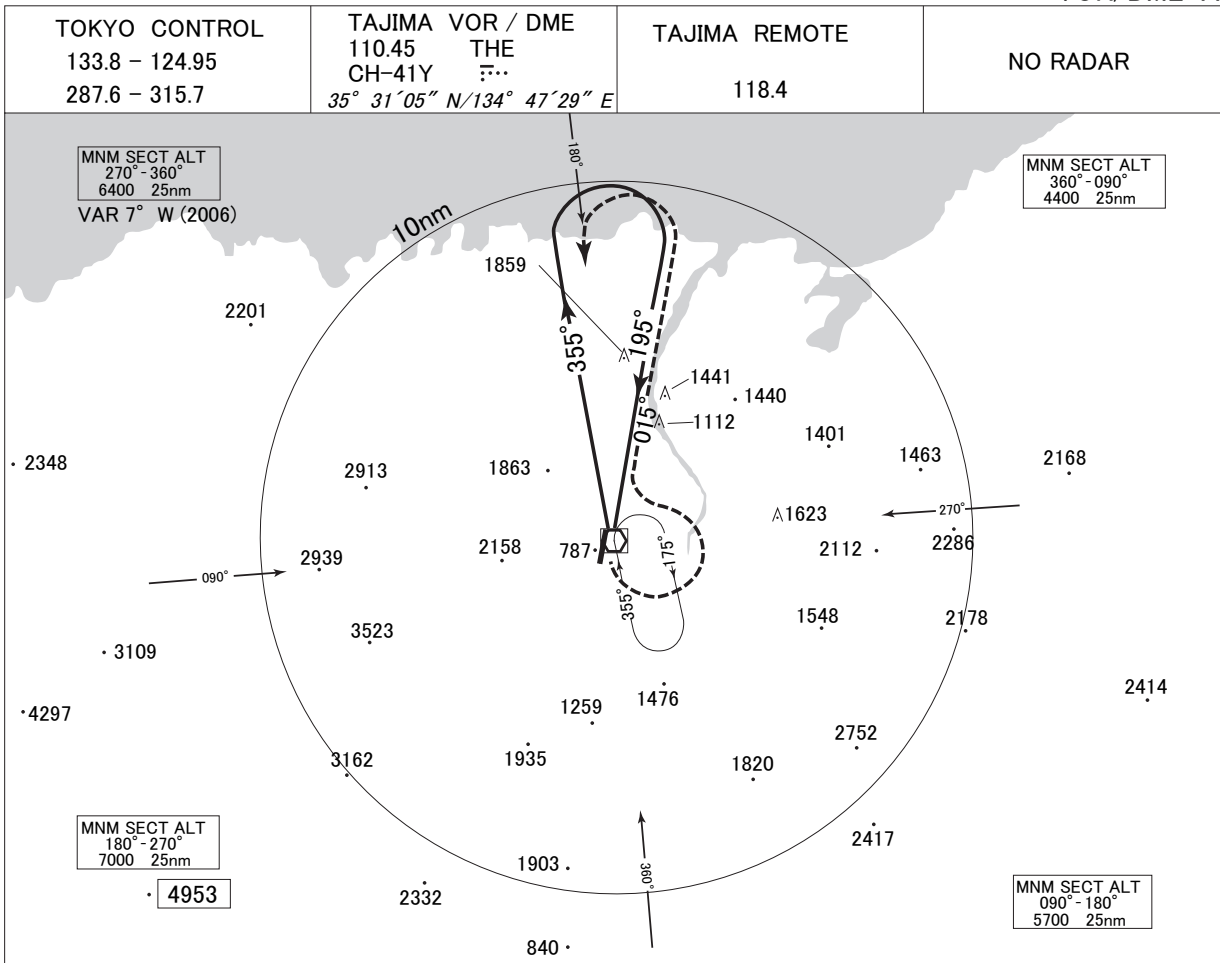
INSTRUMENT APPROACH CHART



INSTRUMENT APPROACH CHART

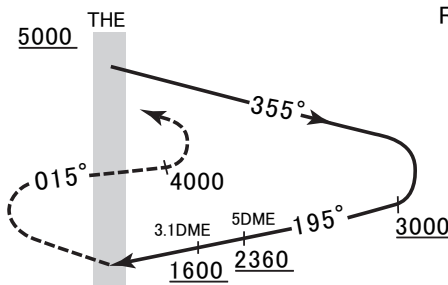
RJBT / TAJIMA

VOR/DME A



MISSED APPROACH

At THE VOR/DME, turn left, climb via THE R-015 to 4000', turn left proceed to THE VOR/DME within 10DME, and hold at 5000'. Contact TAJIMA REMOTE.



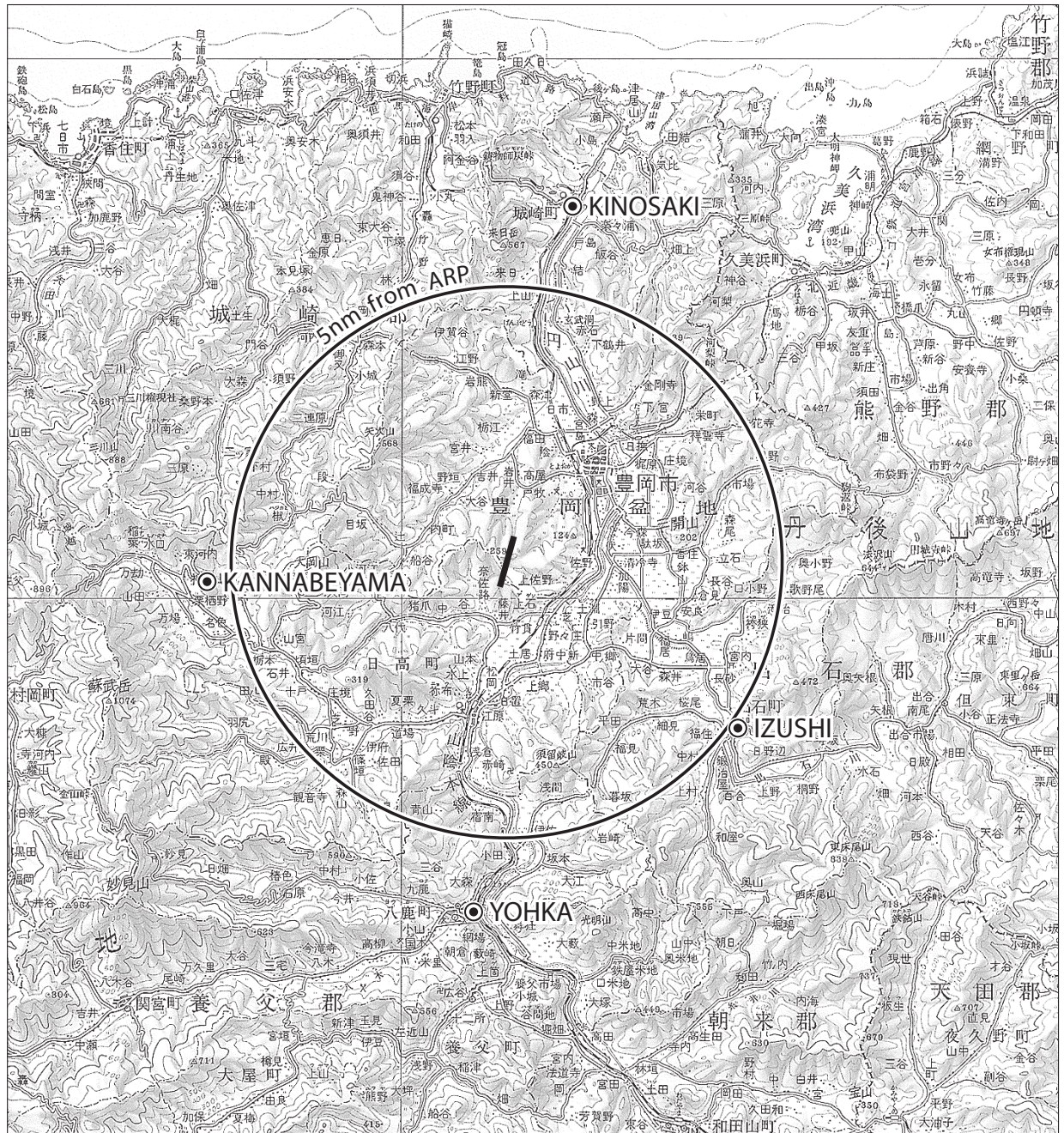
Remain within 10DME

MINIMA		AD elev. 578
CAT	CIRCLING	
	MDA(H)	VIS
A	1480 (902)	1600
B		2400
C	-	-
D	-	-

Circling to East side of RWY only

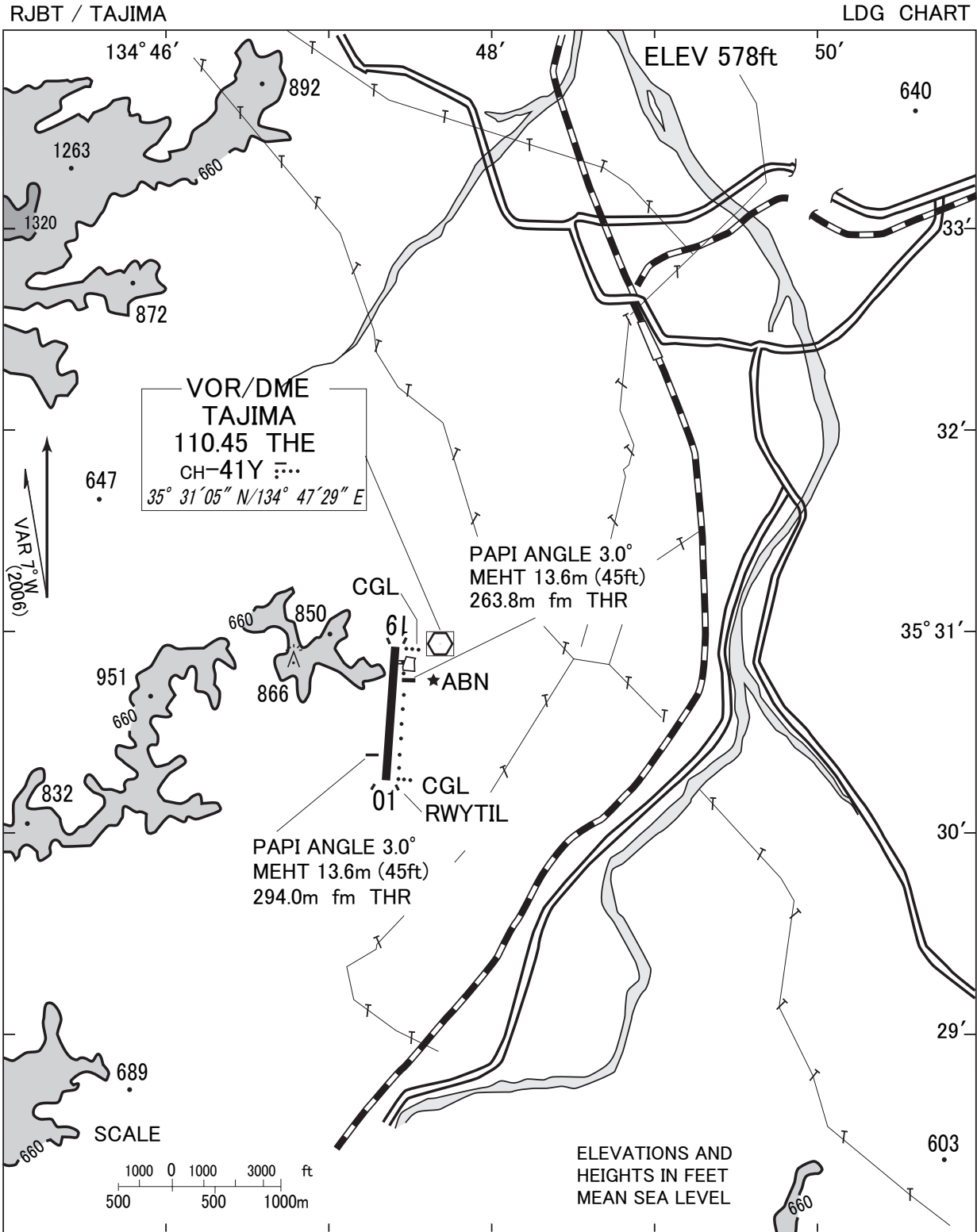
RJBT / TAJIMA

Visual REP



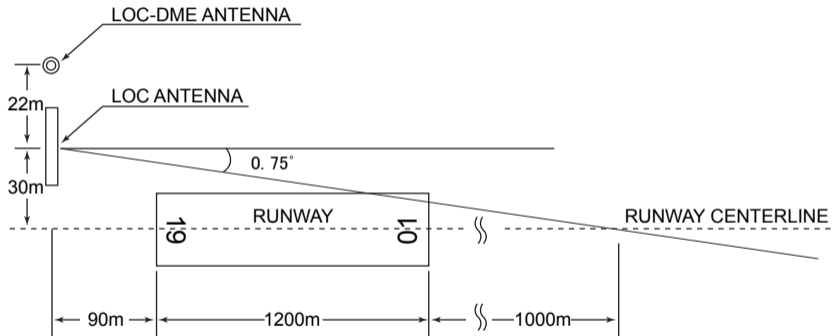
※TAJIMA FLIGHT SERVICE : 130.8MHz

Call sign	BRG / DIST from ARP	Remarks
城崎 Kinosaki	018°/6.8NM	JR城崎駅 Station
神鍋山 Kannabeyama	273°/5.5NM	山 Mountain
出石 Izushi	132°/5.0NM	出石市街 Town
八鹿 Yohka	189°/6.0NM	JR八鹿駅 Station



TAJIMA AIRPORT

LOC



- REMARKS :
1. LOC OFF SET ANGLE 0.75°
 2. LOC beam BRG(MAG) 11°
 3. ELEV of LOC-DME 174.2m(572ft)