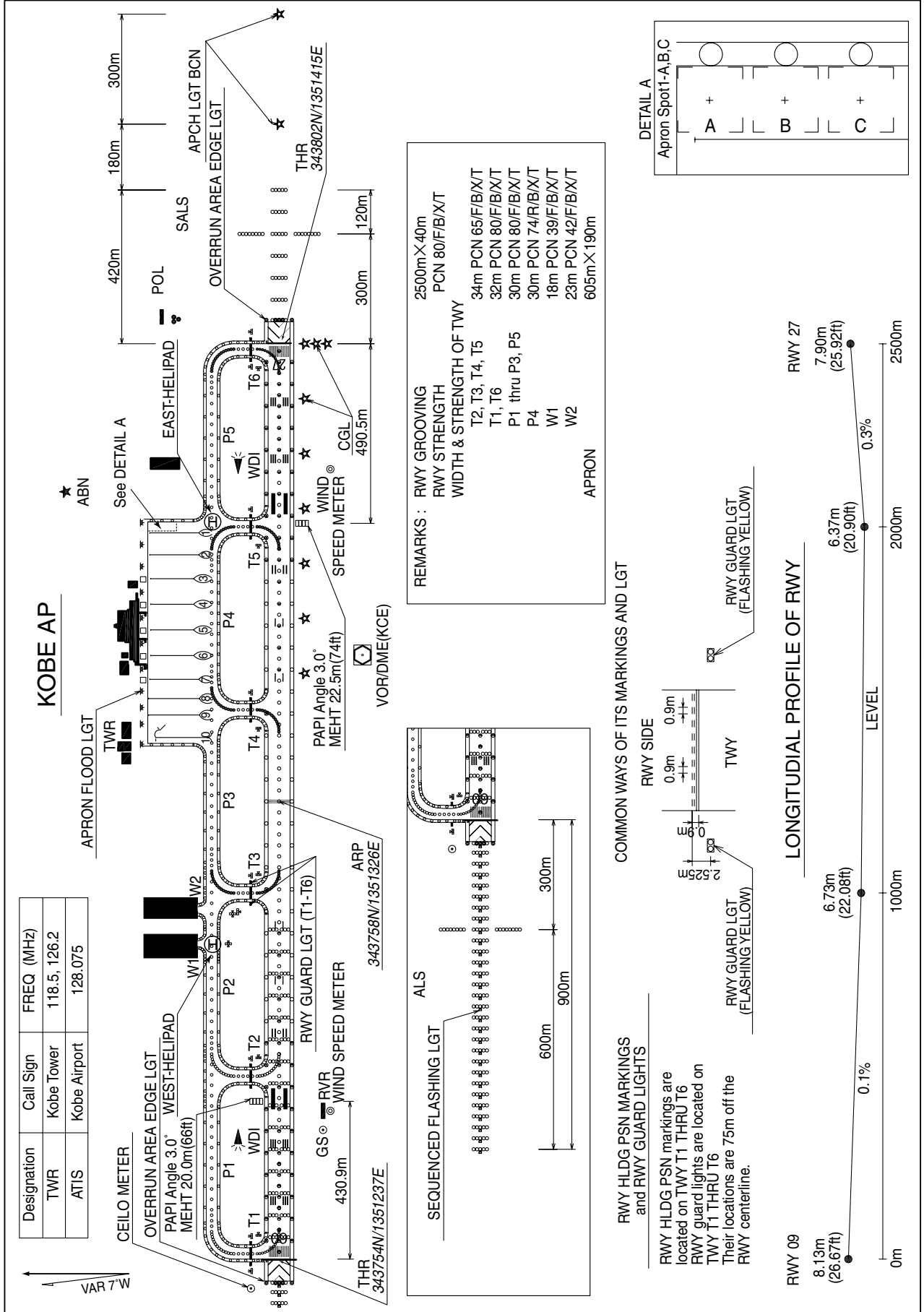


RJBE / KOBE

AD CHART



STANDARD DEPARTURE CHART-INSTRUMENT

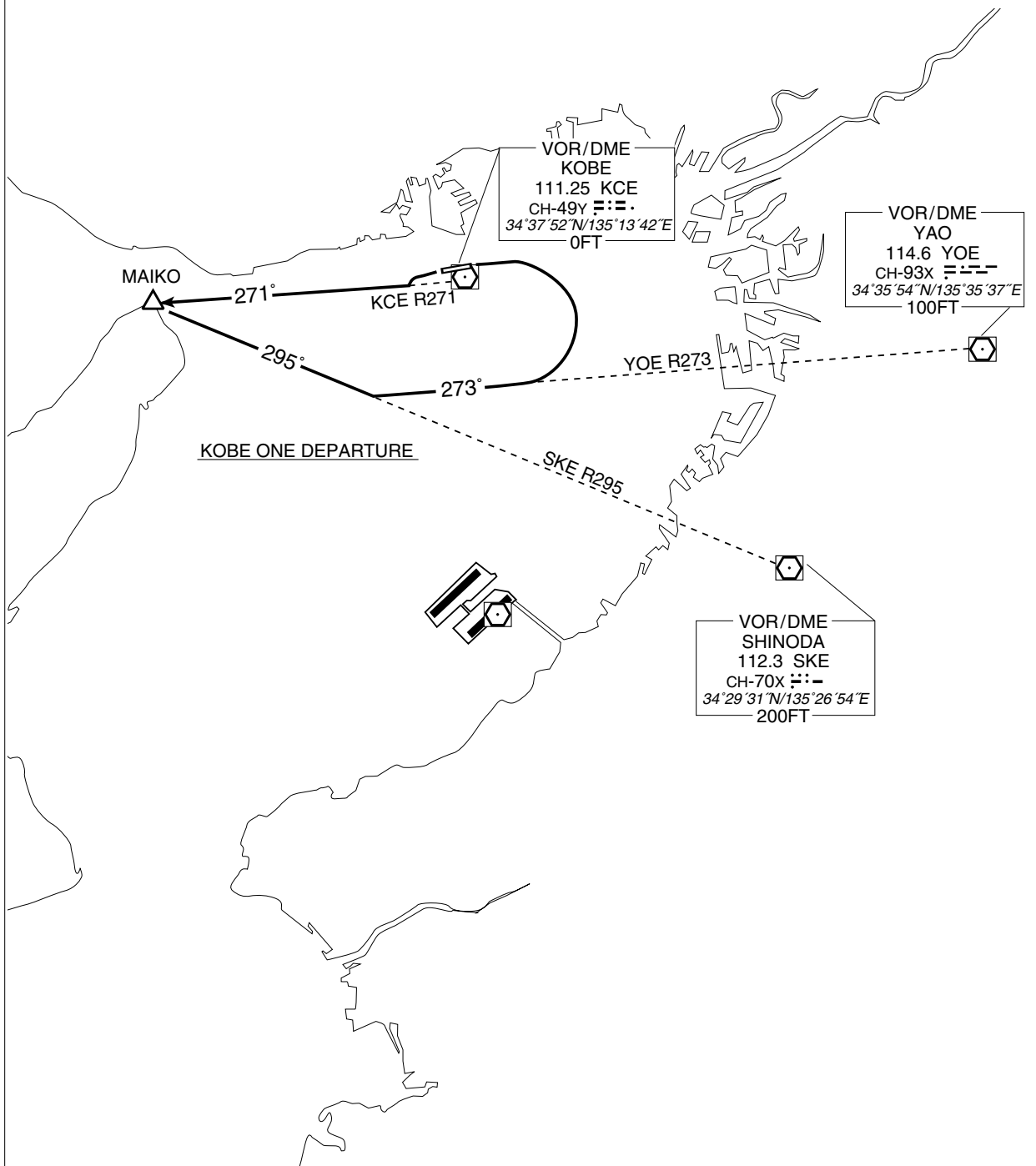
RJBE / KOBE

SID

KOBE ONE DEPARTURE

RWY09: Turn right, climb via YOE R273 to intercept and proceed via SKE R295 to MAIKO.

RWY27: Turn left, climb via KCE R271 to MAIKO.



STANDARD DEPARTURE CHART - INSTRUMENT

RJBE / KOBE

TRANSITION

GODON TRANSITION

From over MAIKO, proceed via KCE R271 to EJIMA, via AJE R343 to OLIVE, then via STE R038 to GODON.

Cross OLIVE at or above 11000FT.

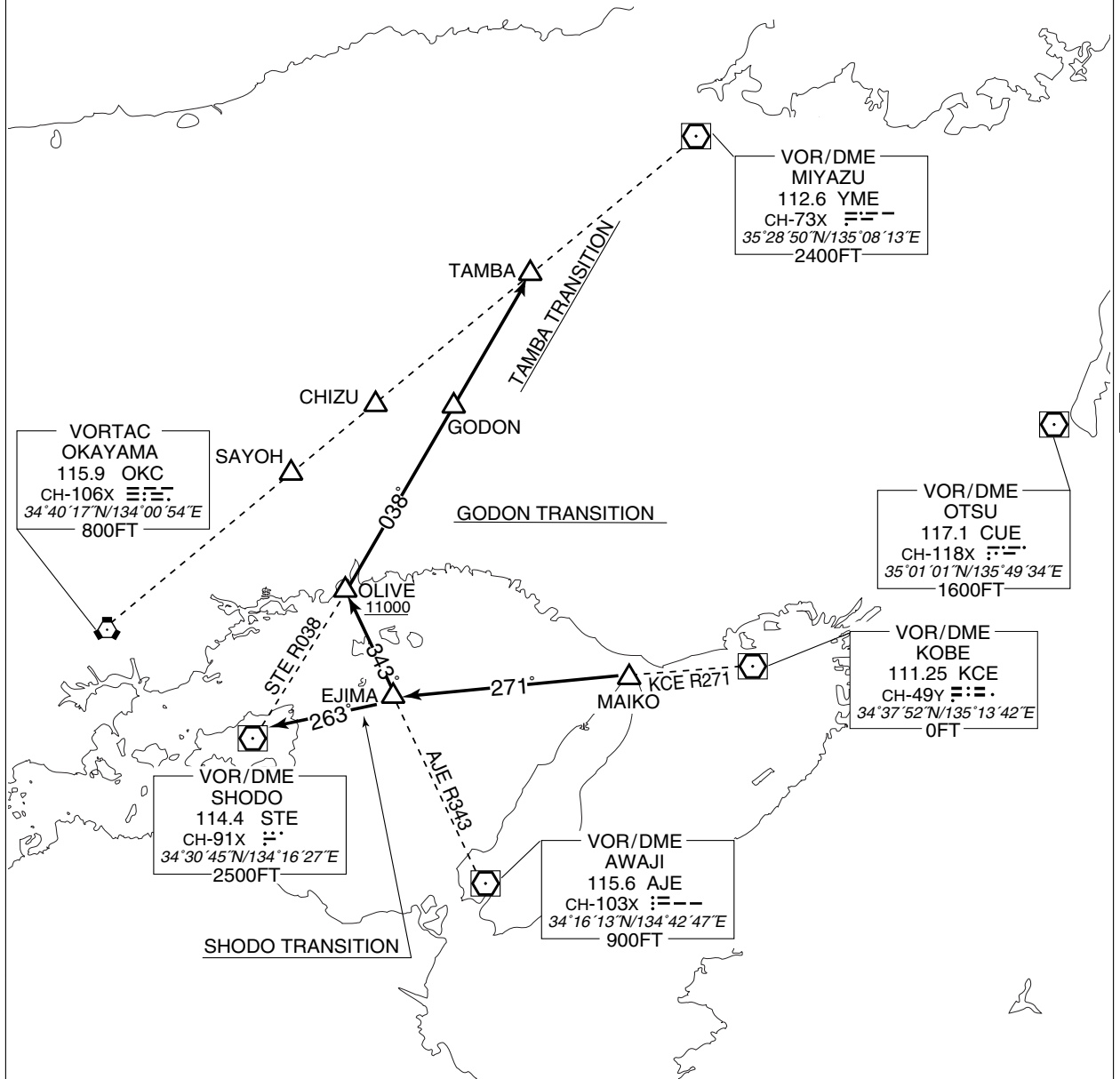
TAMBA TRANSITION

From over MAIKO, proceed via KCE R271 to EJIMA, via AJE R343 to OLIVE, via STE R038 to TAMBA via GODON.

Cross OLIVE at or above 11000FT.

SHODO TRANSITION

From over MAIKO, proceed via KCE R271 to EJIMA, via STE R083 to STE VOR/DME.



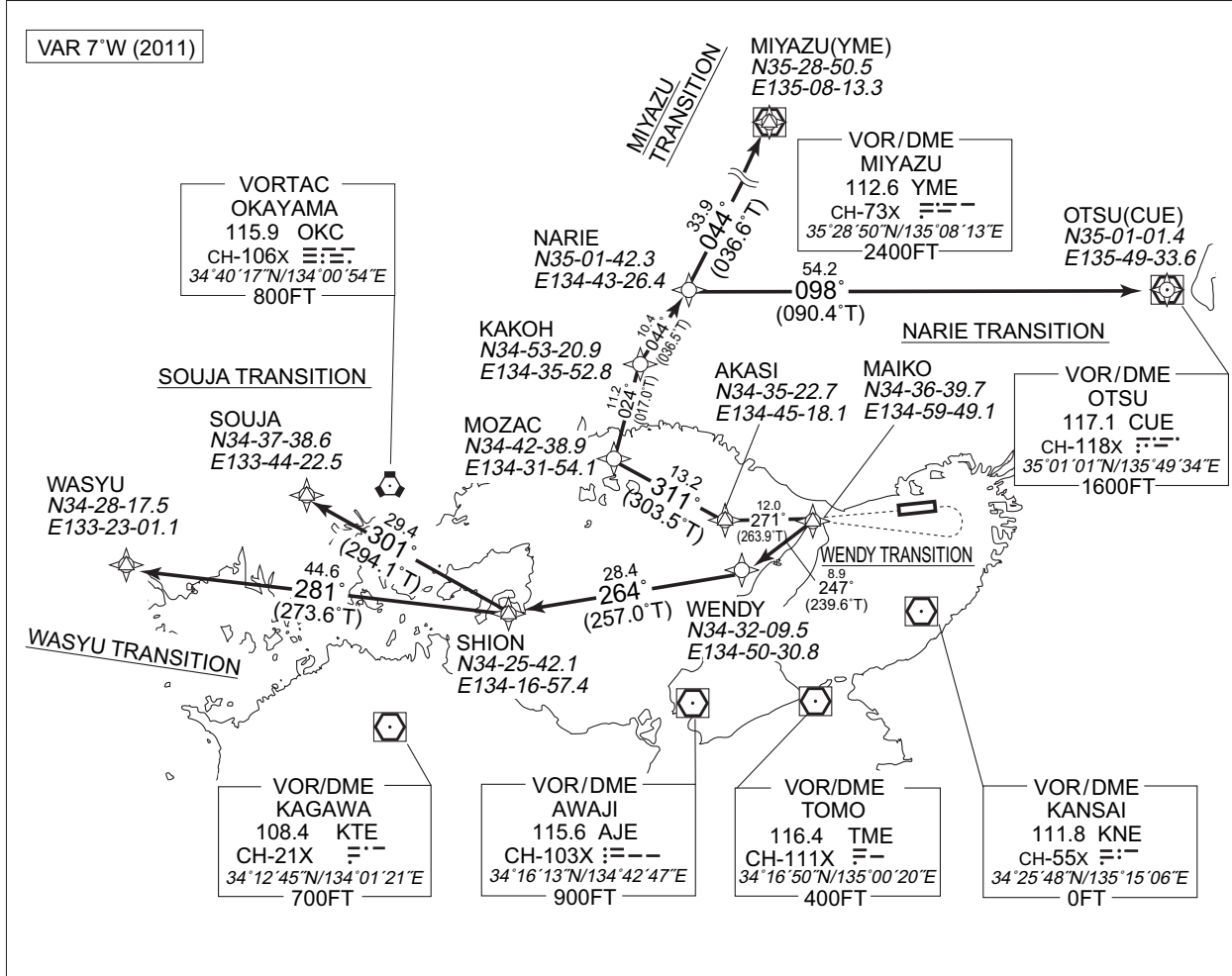
STANDARD DEPARTURE CHART - INSTRUMENT

RJBE / KOBE

➔ RNAV TRANSITION

NARIE TRANSITION / MIYAZU TRANSITION / SOUJA TRANSITION WASYU TRANSITION / WENDY TRANSITION		RNAV 1
--	--	--------

Note 1) DME/DME/IRU or GNSS required. ※The aircraft equipped with only DME/DME/IRU must be able to update its position without delay at the starting point of take-off rolling. 2) RADAR service required.	Critical DME	-
	DME GAP	-
	Inappropriate NavAids	See AD1.1.6.10.3. Inappropriate NAVAIDs for RNAV1



NARIE TRANSITION

From MAIKO, to AKASI, to MOZAC, to KAKOH, to NARIE, to OTSU (CUE).

MIYAZU TRANSITION

From MAIKO, to AKASI, to MOZAC, to KAKOH, to NARIE, to MIYAZU (YME).

SOUJA TRANSITION

From MAIKO, to WENDY, to SHION, to SOUJA.

WASYU TRANSITION

From MAIKO, to WENDY, to SHION, to WASYU.

WENDY TRANSITION

From MAIKO, to WENDY.

STANDARD DEPARTURE CHART - INSTRUMENT

RJBE / KOBE

➔ RNAV TRANSITION

NARIE TRANSITION

Rcmd. Path Terminator	Fix ID (Waypoint Name)	Fly Over	Distance (NM)	MAG Track (TRUE Track)	Turn Direction	Altitude (FT)	Speed Limit (KIAS)	Vertical Angle	Navigation Performance
IF	MAIKO	—	—	—	—	—	—	—	RNAV1
TF	AKASI	—	12.0	271° (263.9°)	—	—	—	—	RNAV1
TF	MOZAC	—	13.2	311° (303.5°)	—	—	—	—	RNAV1
TF	KAKOH	—	11.2	024° (017.0°)	—	—	—	—	RNAV1
TF	NARIE	—	10.4	044° (036.5°)	—	—	—	—	RNAV1
TF	OTSU (CUE)	—	54.2	098° (090.4°)	—	—	—	—	RNAV1

MIYAZU TRANSITION

Rcmd. Path Terminator	Fix ID (Waypoint Name)	Fly Over	Distance (NM)	MAG Track (TRUE Track)	Turn Direction	Altitude (FT)	Speed Limit (KIAS)	Vertical Angle	Navigation Performance
IF	MAIKO	—	—	—	—	—	—	—	RNAV1
TF	AKASI	—	12.0	271° (263.9°)	—	—	—	—	RNAV1
TF	MOZAC	—	13.2	311° (303.5°)	—	—	—	—	RNAV1
TF	KAKOH	—	11.2	024° (017.0°)	—	—	—	—	RNAV1
TF	NARIE	—	10.4	044° (036.5°)	—	—	—	—	RNAV1
TF	MIYAZU (YME)	—	33.9	044° (036.6°)	—	—	—	—	RNAV1

SOUJA TRANSITION

Rcmd. Path Terminator	Fix ID (Waypoint Name)	Fly Over	Distance (NM)	MAG Track (TRUE Track)	Turn Direction	Altitude (FT)	Speed Limit (KIAS)	Vertical Angle	Navigation Performance
IF	MAIKO	—	—	—	—	—	—	—	RNAV1
TF	WENDY	—	8.9	247° (239.6°)	—	—	—	—	RNAV1
TF	SHION	—	28.4	264° (257.0°)	—	—	—	—	RNAV1
TF	SOUJA	—	29.4	301° (294.1°)	—	—	—	—	RNAV1

STANDARD DEPARTURE CHART - INSTRUMENT

RJBE / KOBE

➔ RNAV TRANSITION

WASYU TRANSITION

Rcmd. Path Terminator	Fix ID (Waypoint Name)	Fly Over	Distance (NM)	MAG Track (TRUE Track)	Turn Direction	Altitude (FT)	Speed Limit (KIAS)	Vertical Angle	Navigation Performance
IF	MAIKO	—	—	—	—	—	—	—	RNAV1
TF	WENDY	—	8.9	247° (239.6°)	—	—	—	—	RNAV1
TF	SHION	—	28.4	264° (257.0°)	—	—	—	—	RNAV1
TF	WASYU	—	44.6	281° (273.6°)	—	—	—	—	RNAV1

WENDY TRANSITION (MAIKO – WENDY)

Rcmd. Path Terminator	Fix ID (Waypoint Name)	Fly Over	Distance (NM)	MAG Track (TRUE Track)	Turn Direction	Altitude (FT)	Speed Limit (KIAS)	Vertical Angle	Navigation Performance
IF	MAIKO	—	—	—	—	—	—	—	RNAV1
TF	WENDY	—	8.9	247° (239.6°)	—	—	—	—	RNAV1

STANDARD ARRIVAL CHART-INSTRUMENT

RJBE / KOBE

STAR

ASANO ARRIVAL

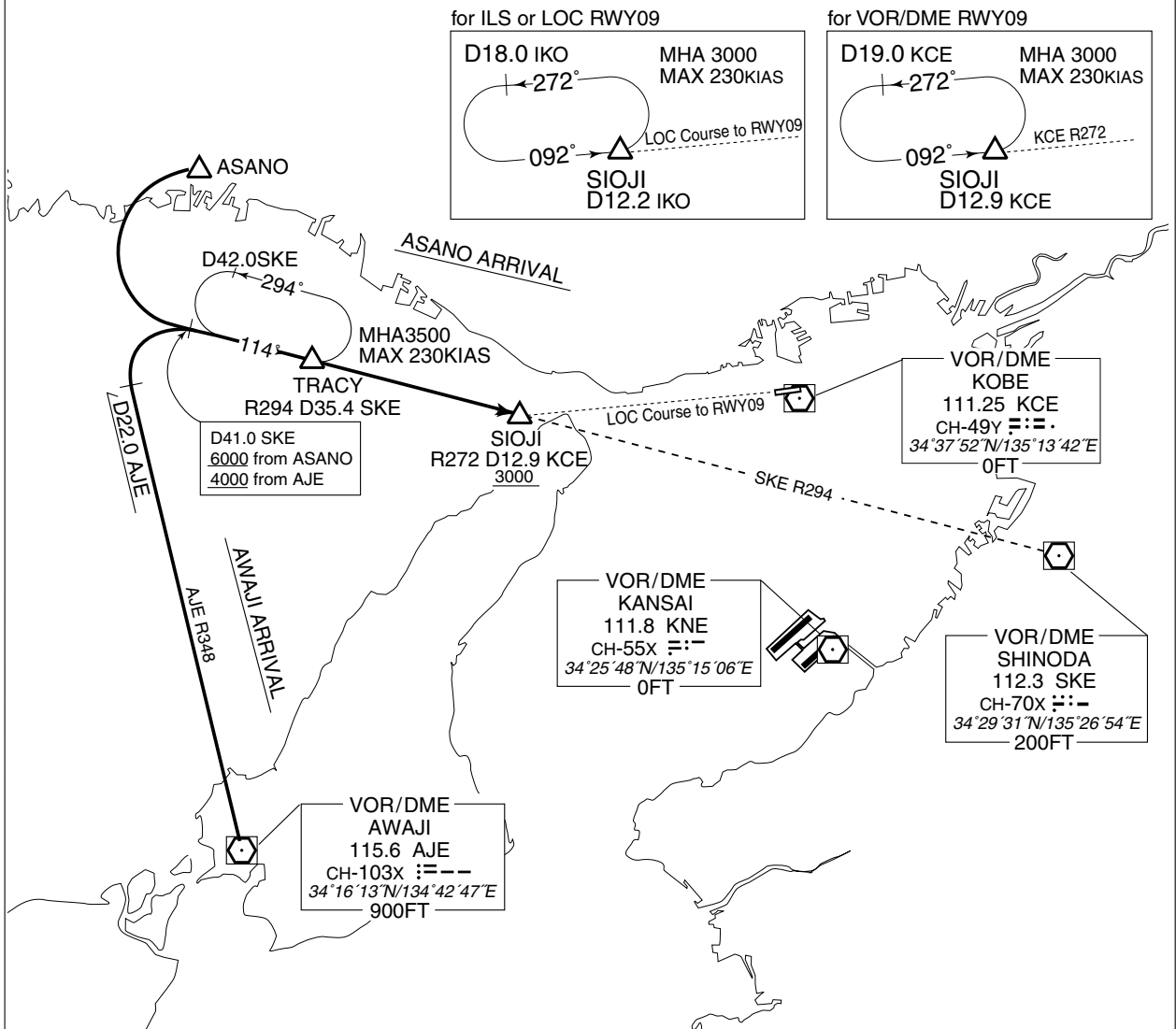
From over ASANO, turn left, intercept and proceed via SKE R294 to SIOJI via TRACY.

Cross SKE R294/ 41.0DME at or above 6000FT, cross SIOJI at or above 3000FT.

AWAJI ARRIVAL

From over AJE VOR/DME, via AJE R348 to AJE R348/22.0DME, turn right to intercept and proceed via SKE R294 to SIOJI via TRACY.

Cross SKE R294/ 41.0DME at or above 4000FT, cross SIOJI at or above 3000FT.



STANDARD ARRIVAL CHART-INSTRUMENT

RJBE / KOBE

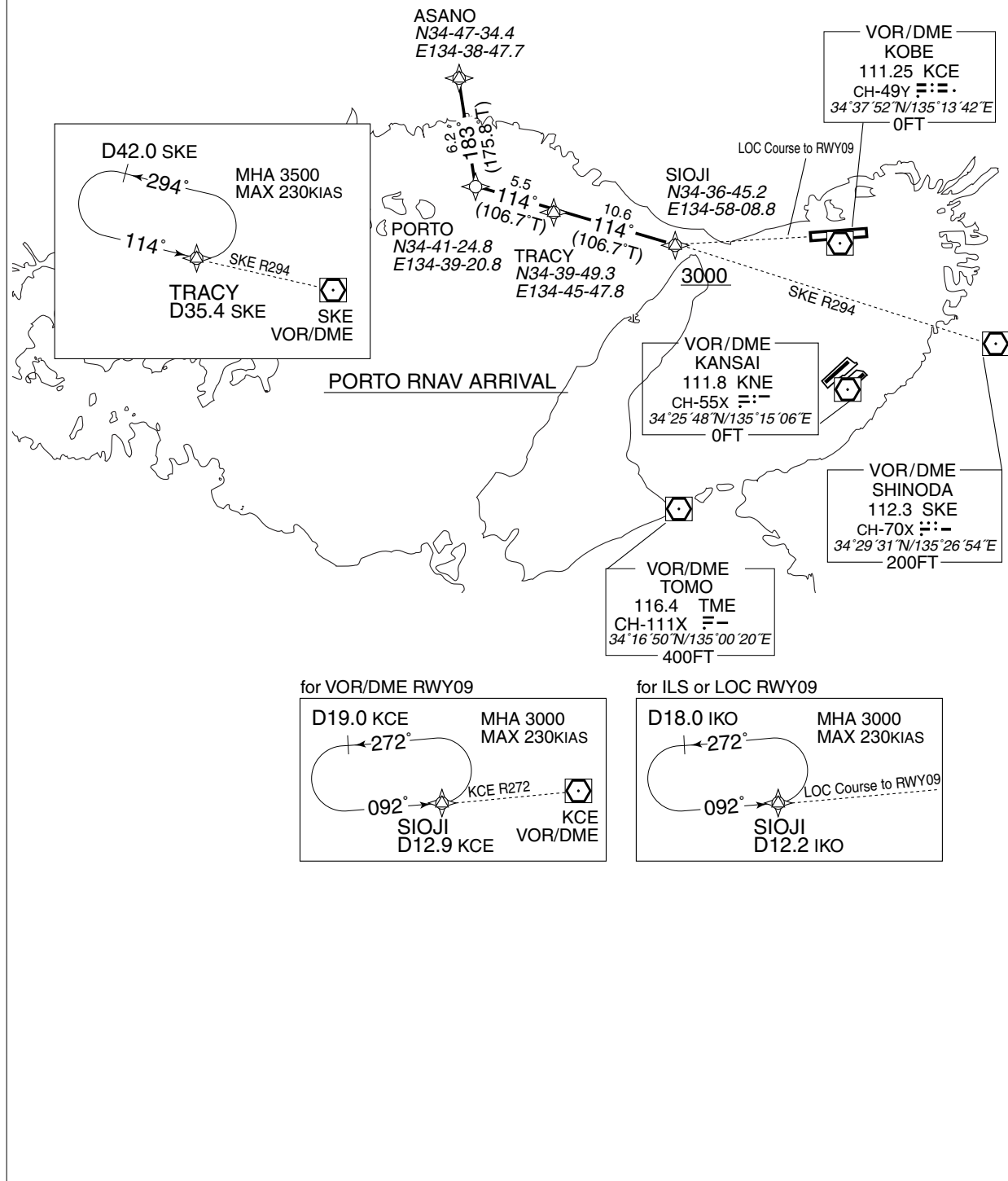
RNAV STAR RWY09

PORTO RNAV ARRIVAL

RNAV 1

Note 1) DME/DME/IRU or GNSS required
 2) RADAR service required

VAR 7°W (2011)



STANDARD ARRIVAL CHART-INSTRUMENT

RJBE / KOBE

RNAV STAR RWY09

PORTO RNAV ARRIVAL

From ASANO, to PORTO, to TRACY, to SIOJI at or above 3000FT.

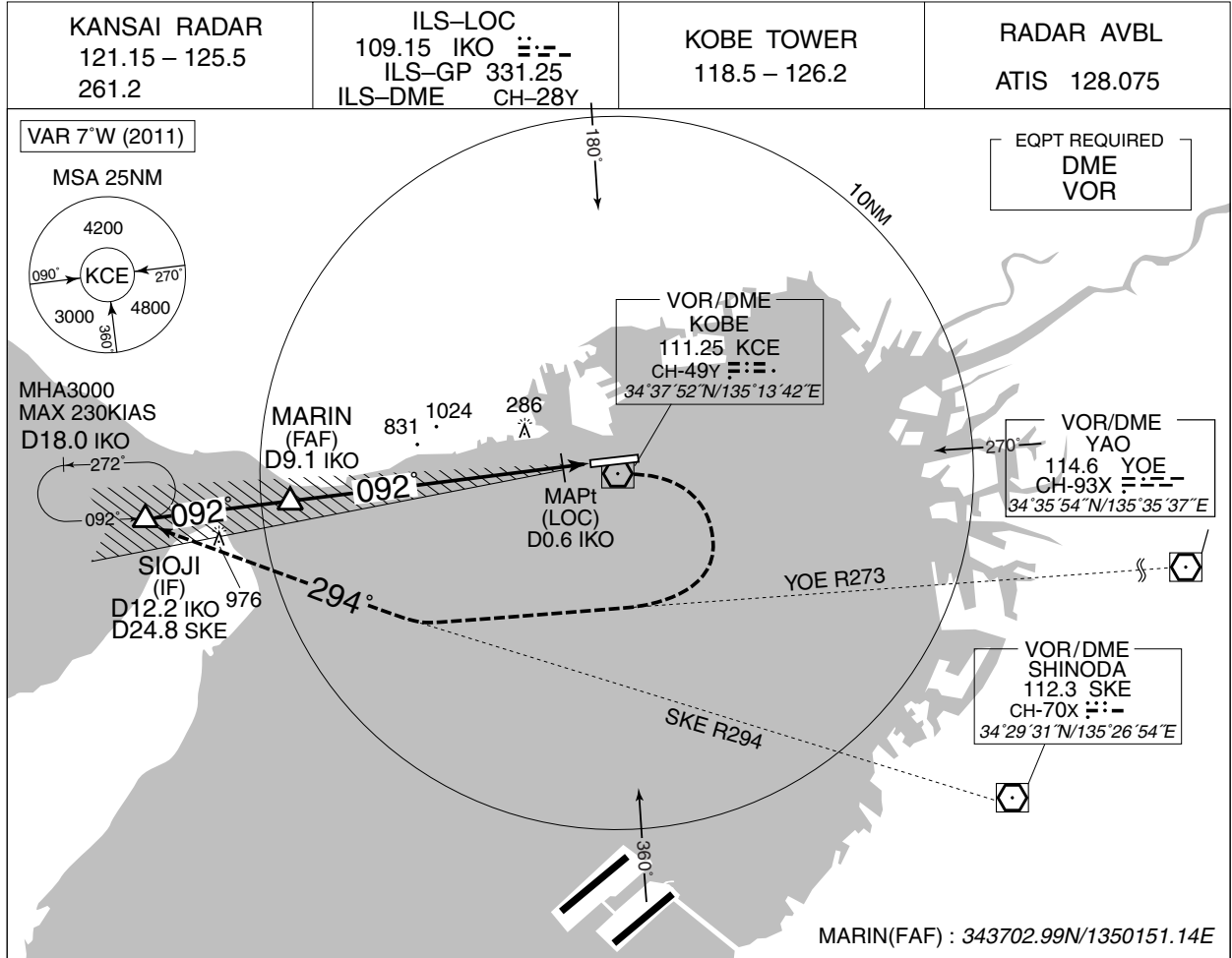
FIX	DESIGNATION	COORDINATES
	ASANO	344734.4N 1343847.7E
	PORTO	344124.8N 1343920.8E
	TRACY	343949.3N 1344547.8E
	SIOJI	343645.2N 1345808.8E
Critical DME	-	
DME GAP	-	
Inappropriate Nav aids	See AD1.1.6.10.3. Inappropriate NAVAIDs for RNAV1	

Rcmd. Path Terminator	Fix ID (Waypoint Name)	Fly Over	Distance (NM)	MAG Track (TRUE Track)	Turn Direction	Altitude (FT)	Speed Limit (KIAS)	Vertical Angle	Navigation Performance
IF	ASANO	-	-	-	-	-	-	-	RNAV1
TF	PORTO	-	6.2	183° (175.8°)	-	-	-	-	RNAV1
TF	TRACY	-	5.5	114° (106.7°)	-	-	-	-	RNAV1
TF	SIOJI	-	10.6	114° (106.7°)	-	+3000	-	-	RNAV1

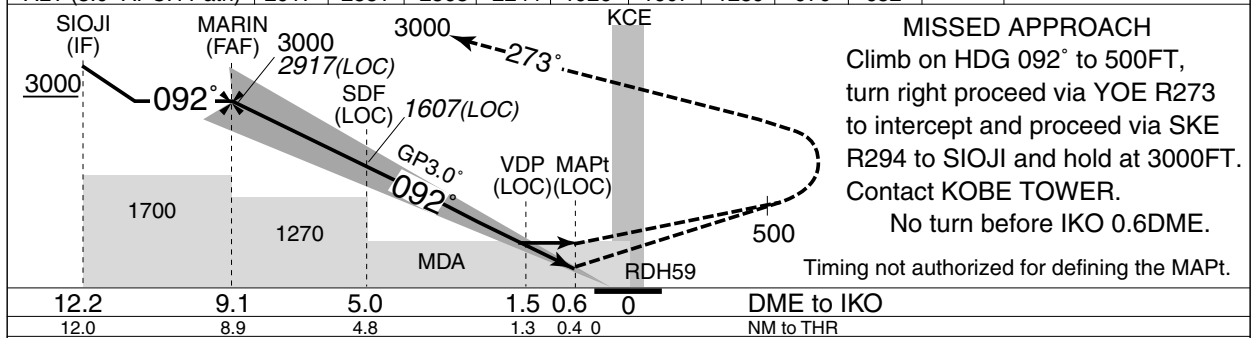
INSTRUMENT APPROACH CHART

RJBE / KOBE

■ ILS or LOC RWY09



NM to IKO	FAF	9	8	7	6	5	4	3	2	MAPt
ALT (3.0° APCH Path)	2917	2881	2563	2244	1926	1607	1289	970	652	-



Missed APCH climb gradient MNM 3.0%

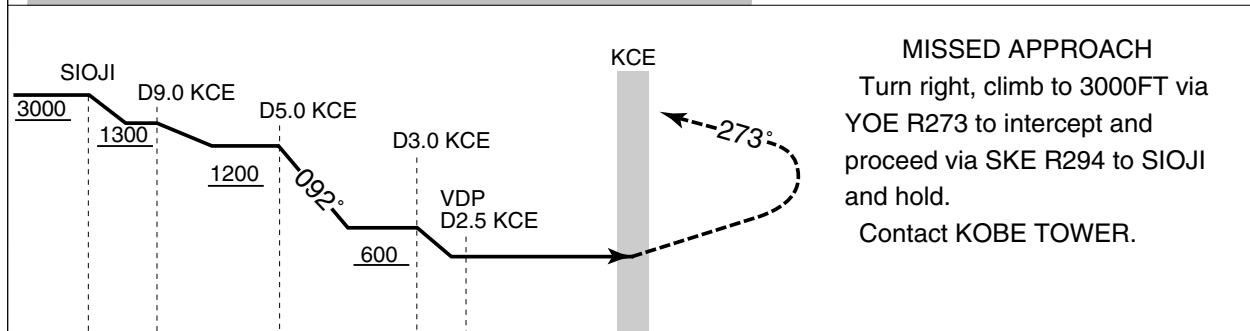
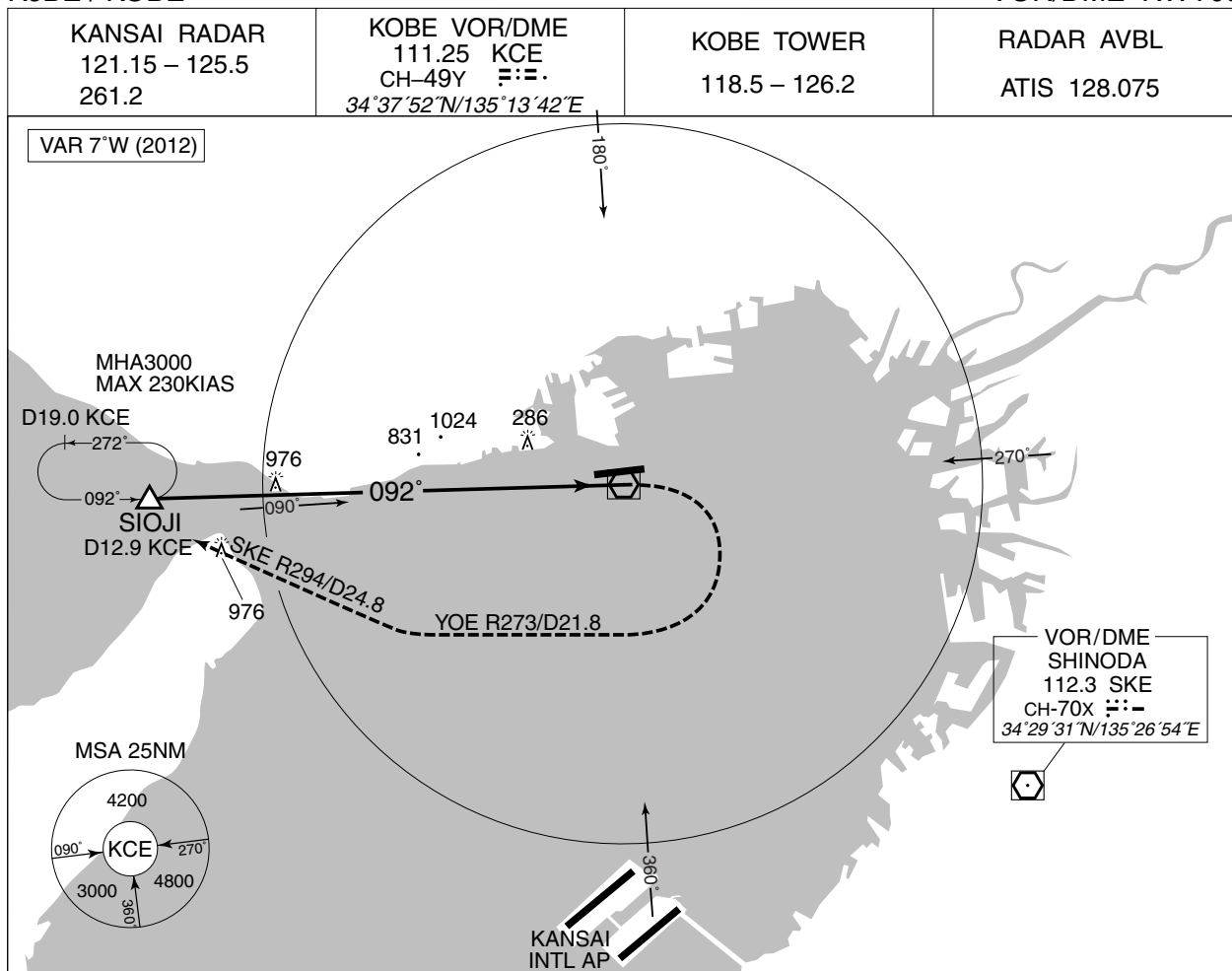
MINIMA		THR elev. 27		AD elev. 22		
CAT	CAT I		LOC		CIRCLING	
	DA(H)	RVR/CMV	MDA(H)	RVR/CMV	MDA(H)	VIS
A	227 (200)	550	460 (438)	900	510 (488)	1600
B				1000		
C				1400		2400
D				580 (558)		

MINIMA with Missed APCH climb gradient of 2.5% are not established.
 Circling to SOUTH side of RWY only.

INSTRUMENT APPROACH CHART

RJBE / KOBE

VOR/DME RWY09



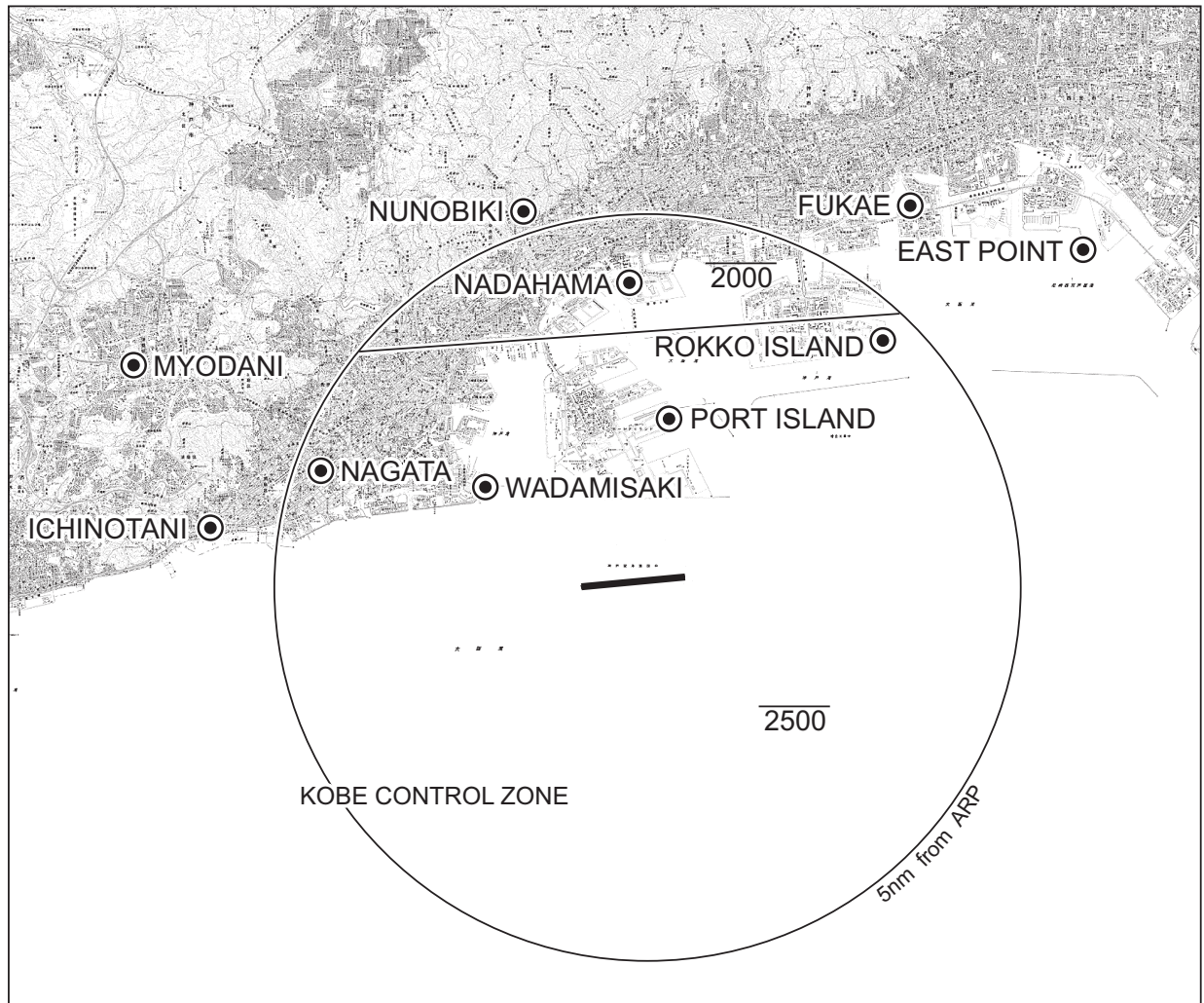
MISSED APPROACH
Turn right, climb to 3000FT via YOE R273 to intercept and proceed via SKE R294 to SIOJI and hold.
Contact KOBE TOWER.

MINIMA	THR elev. 27	AD elev. 22			
CAT	CIRCLING				
	MDA(H)	RVR/CMV	MDA(H)	VIS	
A	560 (538)	1000	560 (538)	1600	
B		1200		2400	
C		1600	580 (558)	3200	
D					

Circling to SOUTH side of RWY only.

RJBE / KOBE

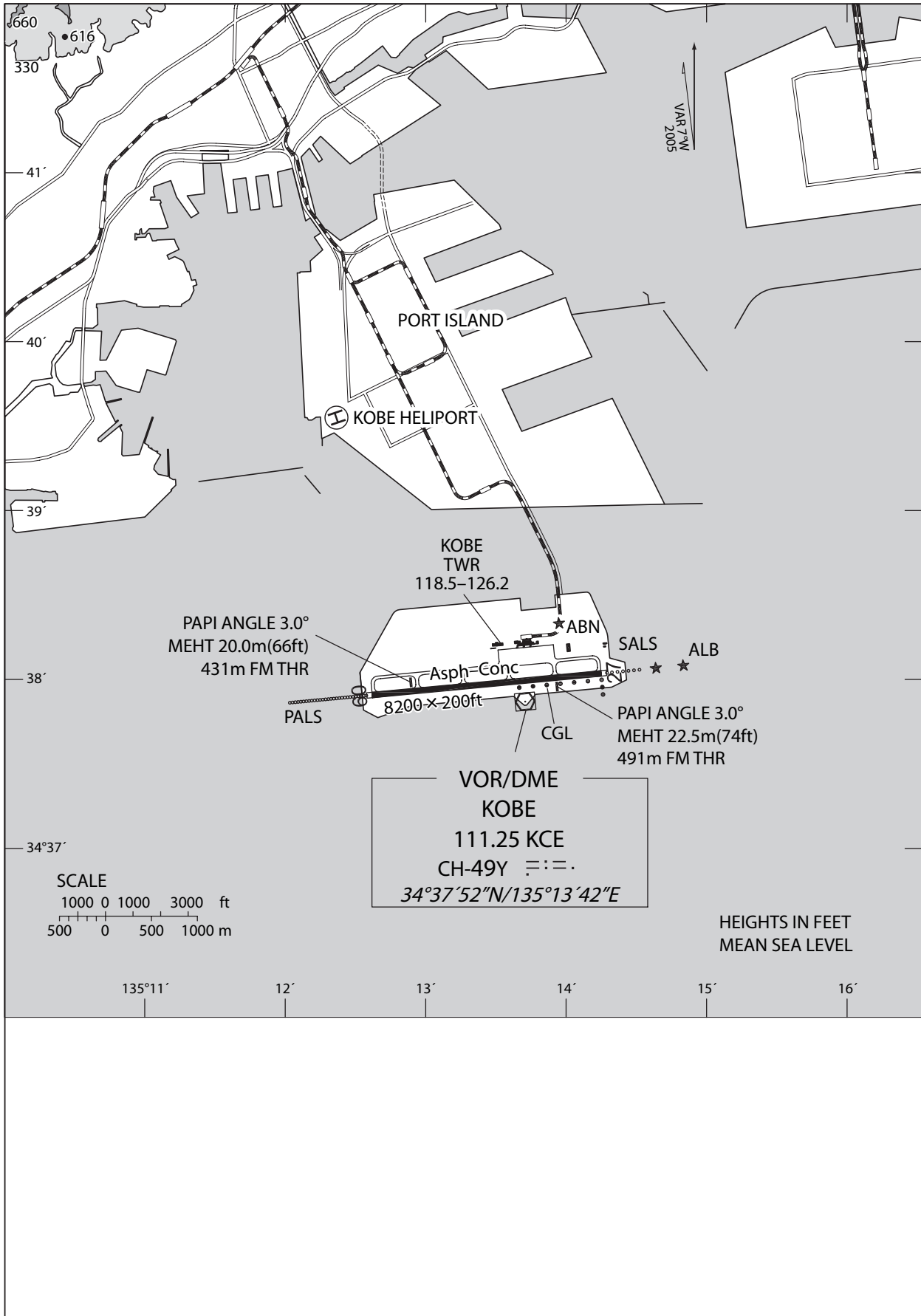
Visual REP



Call sign	BRG / DIST from ARP	Remarks
一ノ谷 Ichinotani	283° / 5.5NM	JR須磨駅 JR Station
名谷 Myodani	301° / 7.0NM	神戸市営西神・山手線名谷駅 Station
長田 Nagata	297° / 4.2NM	JR新長田駅 JR Station
和田岬 Wadamisaki	310° / 2.2NM	岬 Cape
布引 Nunobiki	348° / 5.0NM	布引公園 Park
灘浜 Nadahama	007° / 3.8NM	ハーバーハイウェイ摩耶ランプ Ramp
ポートアイランド Port Island	020° / 2.2NM	ポートアイランド南埠頭 Southern Warf of Port Island
六甲アイランド Rokko Island	051° / 4.4NM	六甲アイランド南東端 Southern Edge of Rokko Island
深江 Fukae	045° / 6.0NM	阪神高速5号湾岸線 深江浜インターチェンジ Interchange
イーストポイント East Point	061° / 7.2NM	西宮ヨットハーバー防波堤 Breakwater of Nishinomiya Yacht Harbor

RJBE / KOBE

LDG CHART



STANDARD ARRIVAL CHART-INSTRUMENT

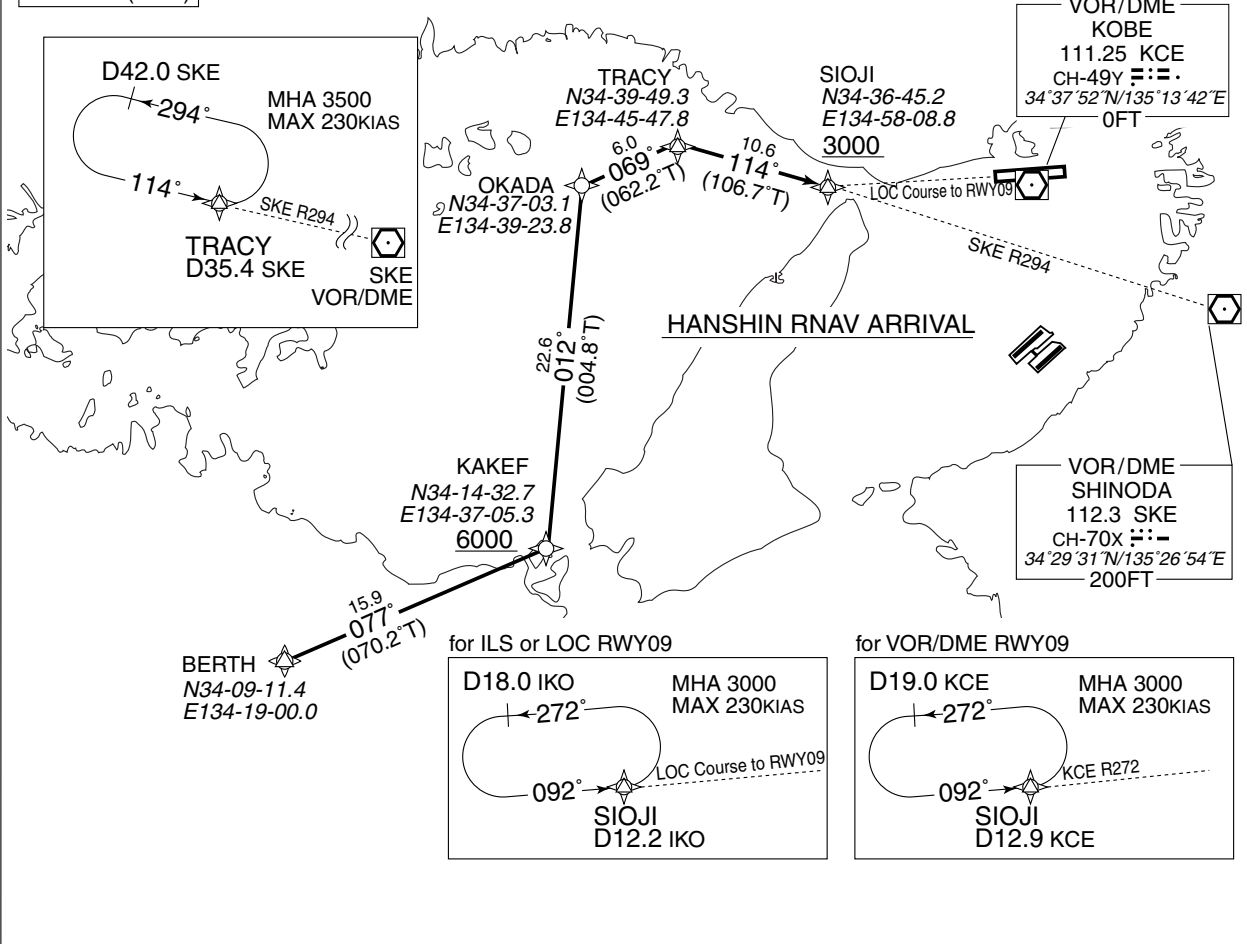
RJBE / KOBÉ

➔ RNAV STAR RWY09

HANSHIN RNAV ARRIVAL RNAV 1

Note 1) DME/DME/IRU or GNSS required
2) RADAR service required

VAR 7°W (2012)



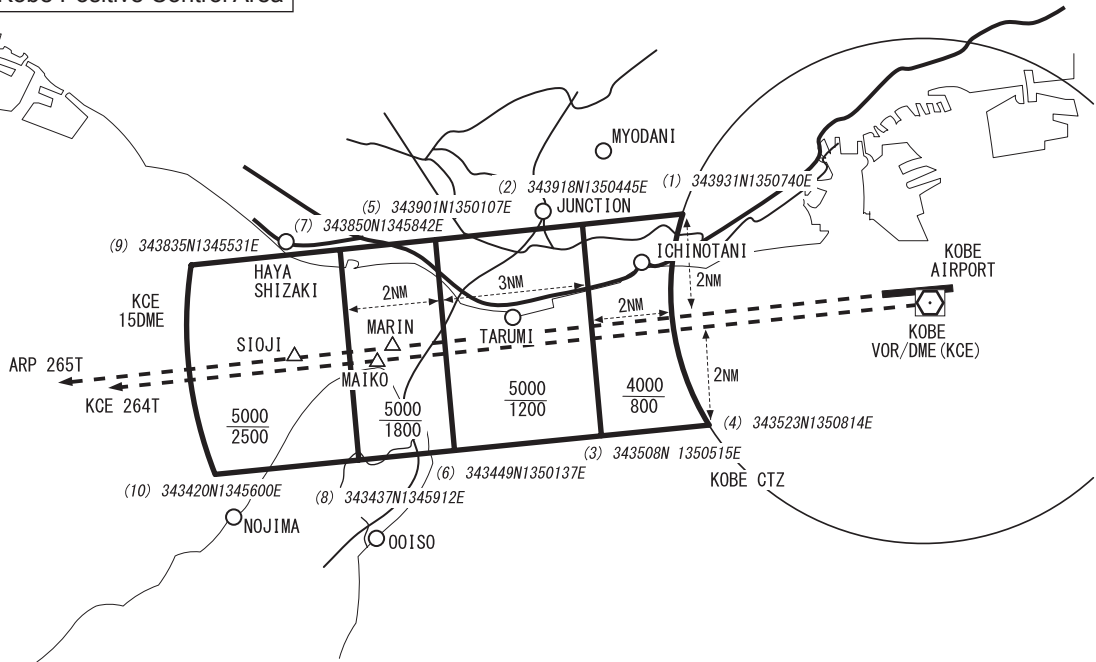
HANSHIN RNAV ARRIVAL

From BERTH, to KAKEF at or above 6000FT, to OKADA, to TRACY, to SIOJI at or above 3000FT.

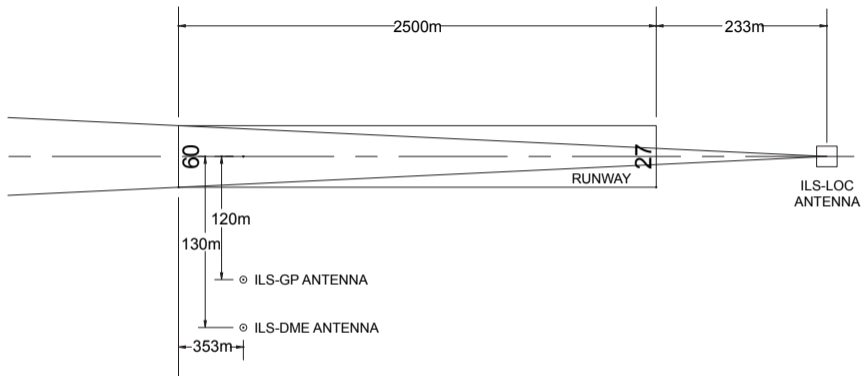
FIX	DESIGNATION	COORDINATES	
	BERTH	340911.4N	1341900.0E
KAKEF	341432.7N	1343705.3E	
OKADA	343703.1N	1343923.8E	
TRACY	343949.3N	1344547.8E	
SIOJI	343645.2N	1345808.8E	
Critical DME	-		
DME GAP	-		
Inappropriate Nav aids	See AD1.1.6.10.3. Inappropriate NAV AIDs for RNAV1		

Rcmd. Path Terminator	Fix ID (Waypoint Name)	Fly Over	Distance (NM)	MAG Track (TRUE Track)	Turn Direction	Altitude (FT)	Speed Limit (KIAS)	Vertical Angle	Navigation Performance
IF	BERTH	-	-	-	-	-	-	-	RNAV1
TF	KAKEF	-	15.9	077° (070.2°)	-	+6000	-	-	RNAV1
TF	OKADA	-	22.6	012° (004.8°)	-	-	-	-	RNAV1
TF	TRACY	-	6.0	069° (062.2°)	-	-	-	-	RNAV1
TF	SIOJI	-	10.6	114° (106.7°)	-	+3000	-	-	RNAV1

神戸特別管制区
Kobe Positive Control Area



ILS FOR RWY 09



- REMARKS :
- | | |
|-------------------------|--------------|
| 1. LOC beam BRG(MAG) | 092° |
| 2. HGT of ILS REF datum | 18m (59ft) |
| 3. GP Angle | 3.0° |
| 4. ELEV of ILS-DME | 11.9m (39ft) |

RWY 09

RWY 27

26.7ft

25.9ft

22.1ft

20.9ft

0.1%

LEVEL

0.3%

0m

1000m

2000m

2500m

