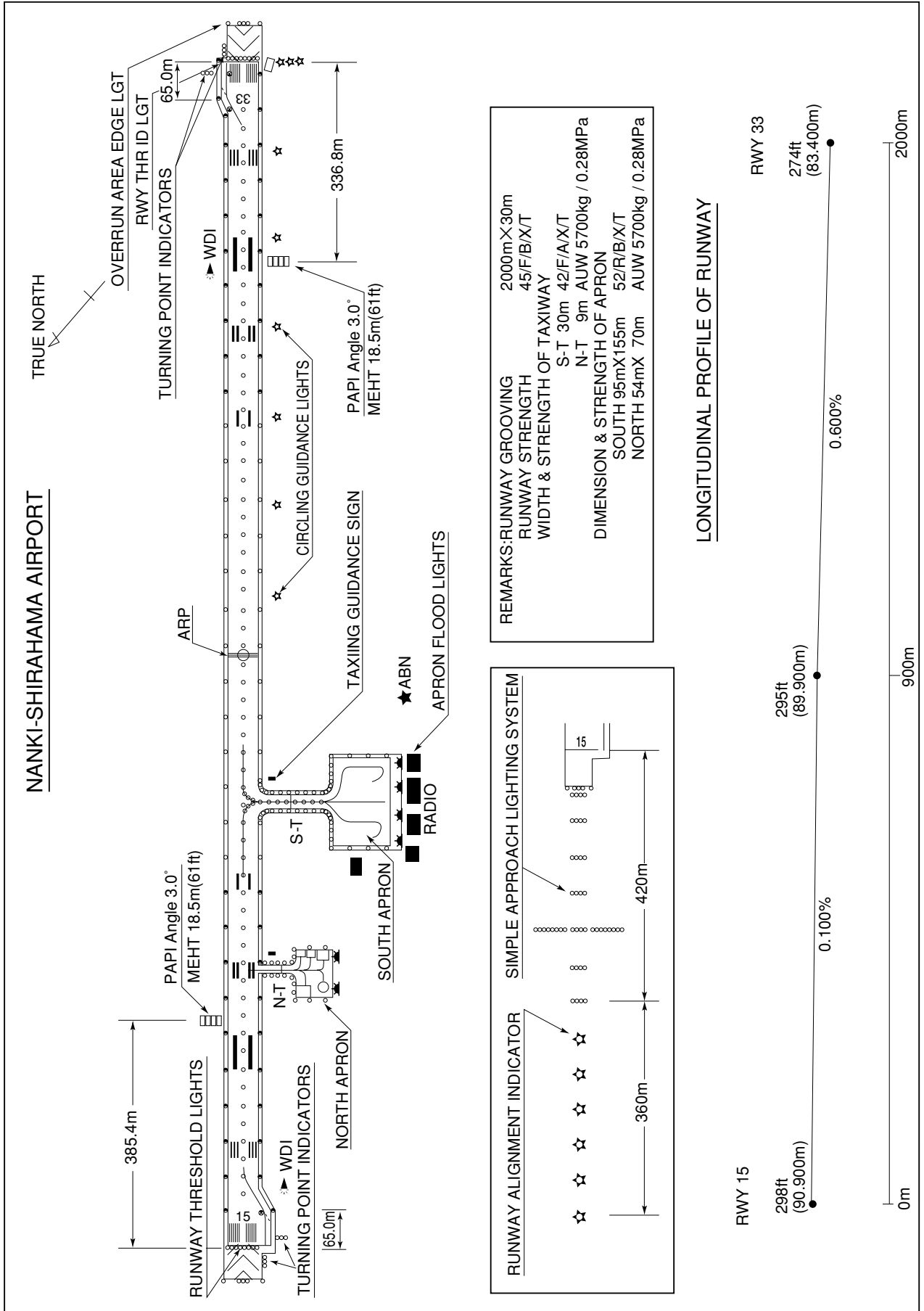


RJBD / NANKI-SHIRAHAMA

AD CHART



STANDARD DEPARTURE CHART - INSTRUMENT

RJBD / NANKI-SHIRAHAMA

SID

NANKI REVERSAL TWO DEPARTURE

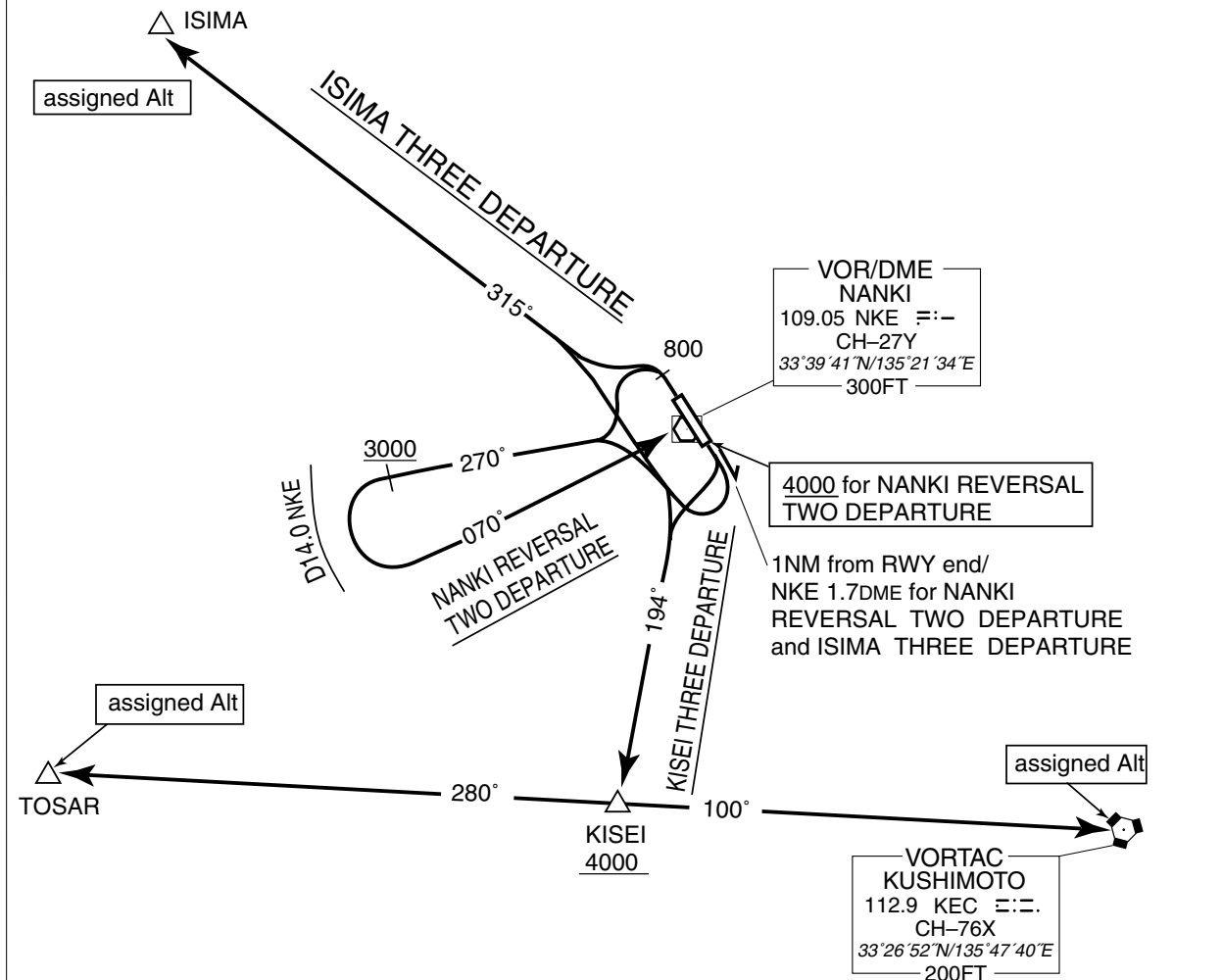
RWY 33: Climb RWY HDG to 800FT or above, turn left,....
 RWY 15: Climb RWY HDG until 1NM from RWY end/NKE 1.7DME, turn right,....
climb via NKE R270 to 3000FT or above, turn left to intercept and proceed via NKE R250 to NKE VOR/DME within NKE 14.0DME.
 Cross NKE VOR/DME at or above 4000FT.

KISEI THREE DEPARTURE

RWY 33: Climb RWY HDG to 800FT or above, turn left,....
 RWY 15: Turn right,....
climb via NKE R194 to KISEI, then via KEC R280 to TOSAR or via KEC R280 to KEC VORTAC.
 Cross KISEI at or above 4000FT and cross TOSAR or KEC VORTAC at assigned altitude.

ISIMA THREE DEPARTURE

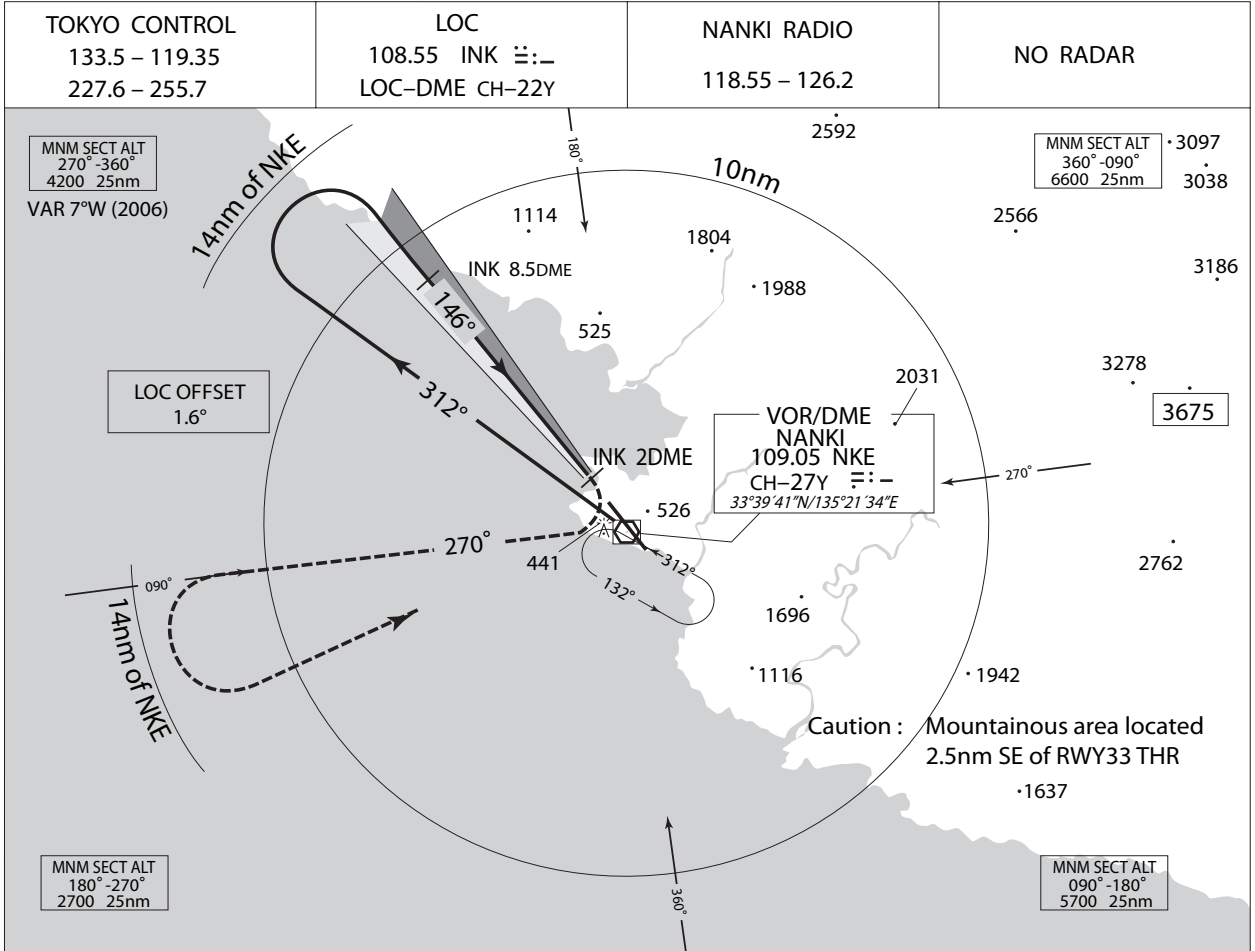
RWY 33: Climb RWY HDG to 800FT or above, turn left,....
 RWY 15: Climb RWY HDG until 1NM from RWY end/NKE 1.7DME, turn right,....
climb via NKE R315 to ISIMA.
 Cross ISIMA at assigned altitude.



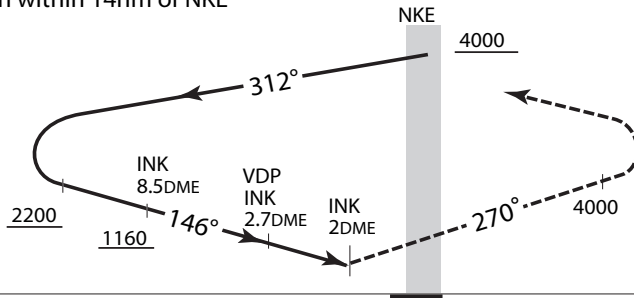
INSTRUMENT APPROACH CHART

RJBD / NANKI-SHIRAHAMA

VOR/LOC RWY15



Remain within 14nm of NKE



MISSED APPROACH

At INK 2.0DME, turn right, climb via NKE R-270 to 4,000ft, then turn left, proceed to NKE VOR within 14nm of NKE VOR and hold. Contact NANKI RADIO.

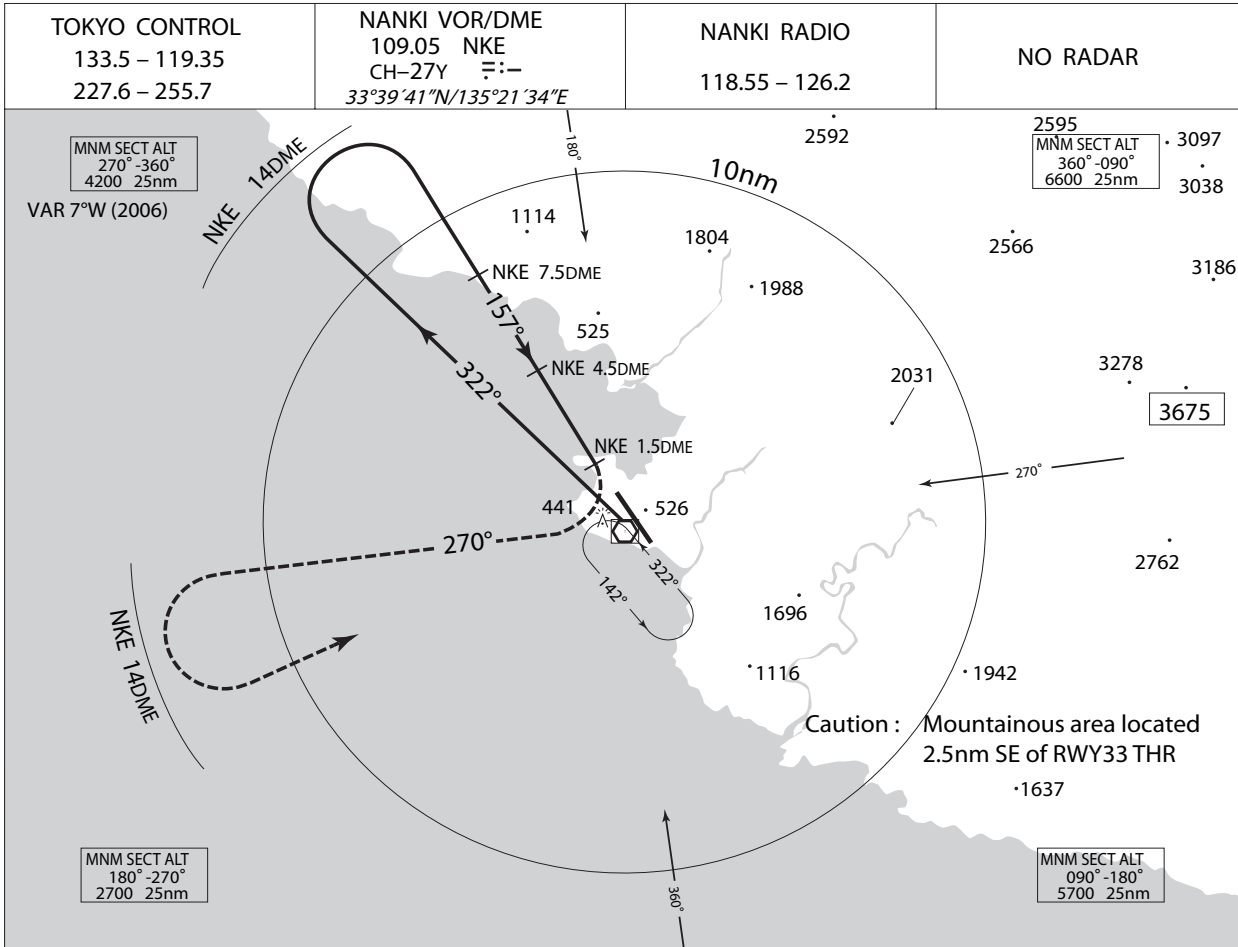
MINIMA		THR elev. 298	AD elev. 293	
CAT			CIRCLING	
	MDA(H)	CMV	MDA(H)	VIS
A	780 (487)	1000	840 (547)	1600
B		1200		
C		1600	1160 (867)	3200
D				

Circling to West side of RWY only.

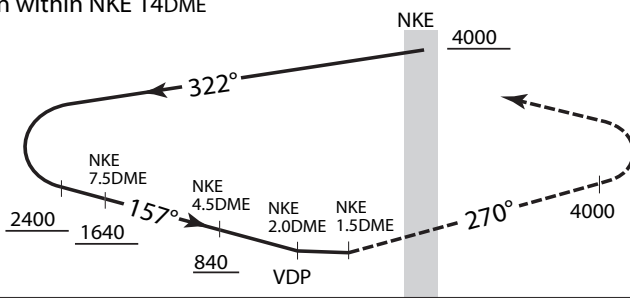
INSTRUMENT APPROACH CHART

RJBD / NANKI-SHIRAHAMA

VOR/DME RWY 15



Remain within NKE 14DME



MISSED APPROACH

At 1.5DME prior to NKE VOR/DME, turn right, climb via NKE R-270 to 4,000ft, then turn left, proceed to NKE VOR/DME within NKE 14DME and hold.
Contact NANKI RADIO.

	MINIMA	THR elev. 298	AD elev. 293	
CAT			CIRCLING	
	MDA(H)	CMV	MDA(H)	VIS
A	780 (487)	1000	840 (547)	1600
B		1200		2400
C		1600	1160 (867)	3200
D				

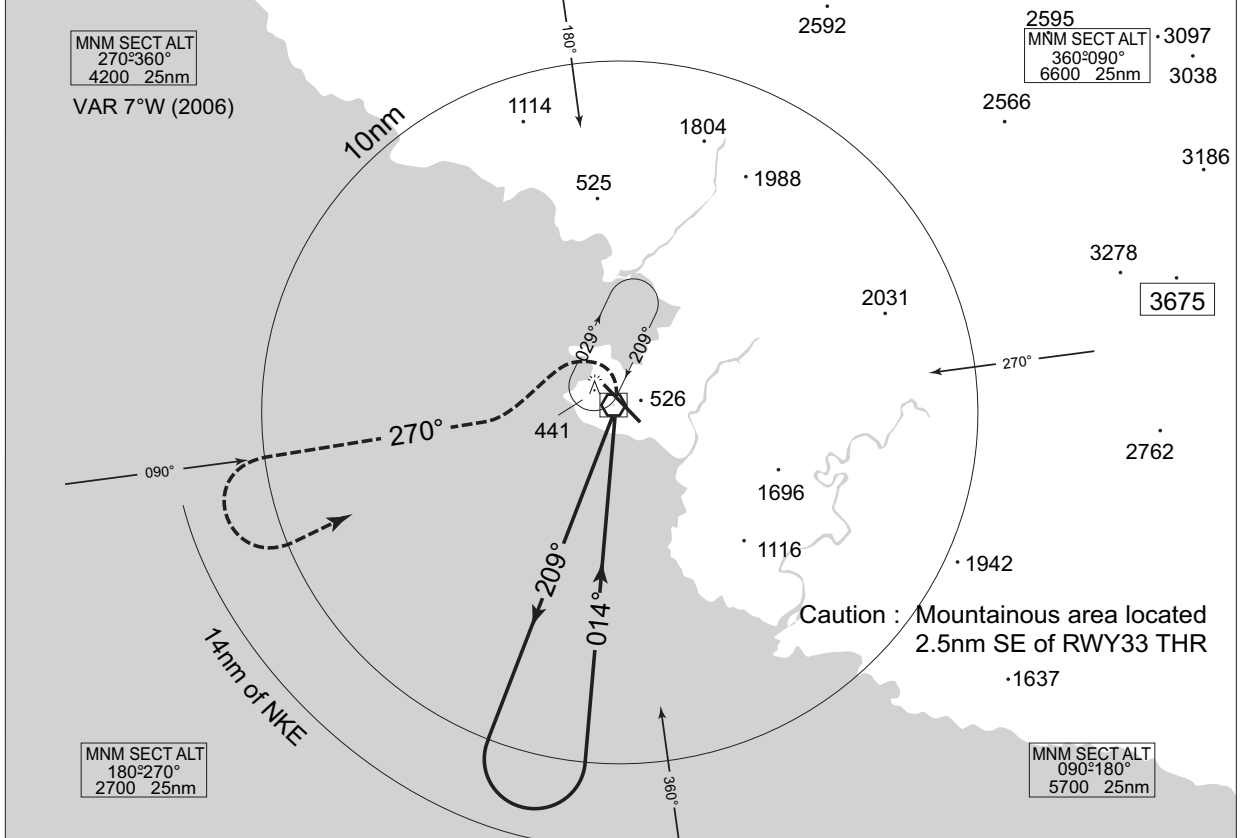
Circling to West side of RWY only.

INSTRUMENT APPROACH CHART

RJBD / NANKI-SHIRAHAMA

VOR A

TOKYO CONTROL 133.5 – 119.35 227.6 – 255.7	NANKI VOR/DME 109.05 NKE CH-27Y \equiv :- 33°39'41"N/135°21'34"E	NANKI RADIO 118.55 – 126.2	NO RADAR
--	---	-------------------------------	----------



MISSED APPROACH
At NKE VOR, turn left, climb via NKE R-270 to 4,000, then turn left, proceed to NKE VOR within 14nm of NKE VOR and hold. Contact NANKI RADIO

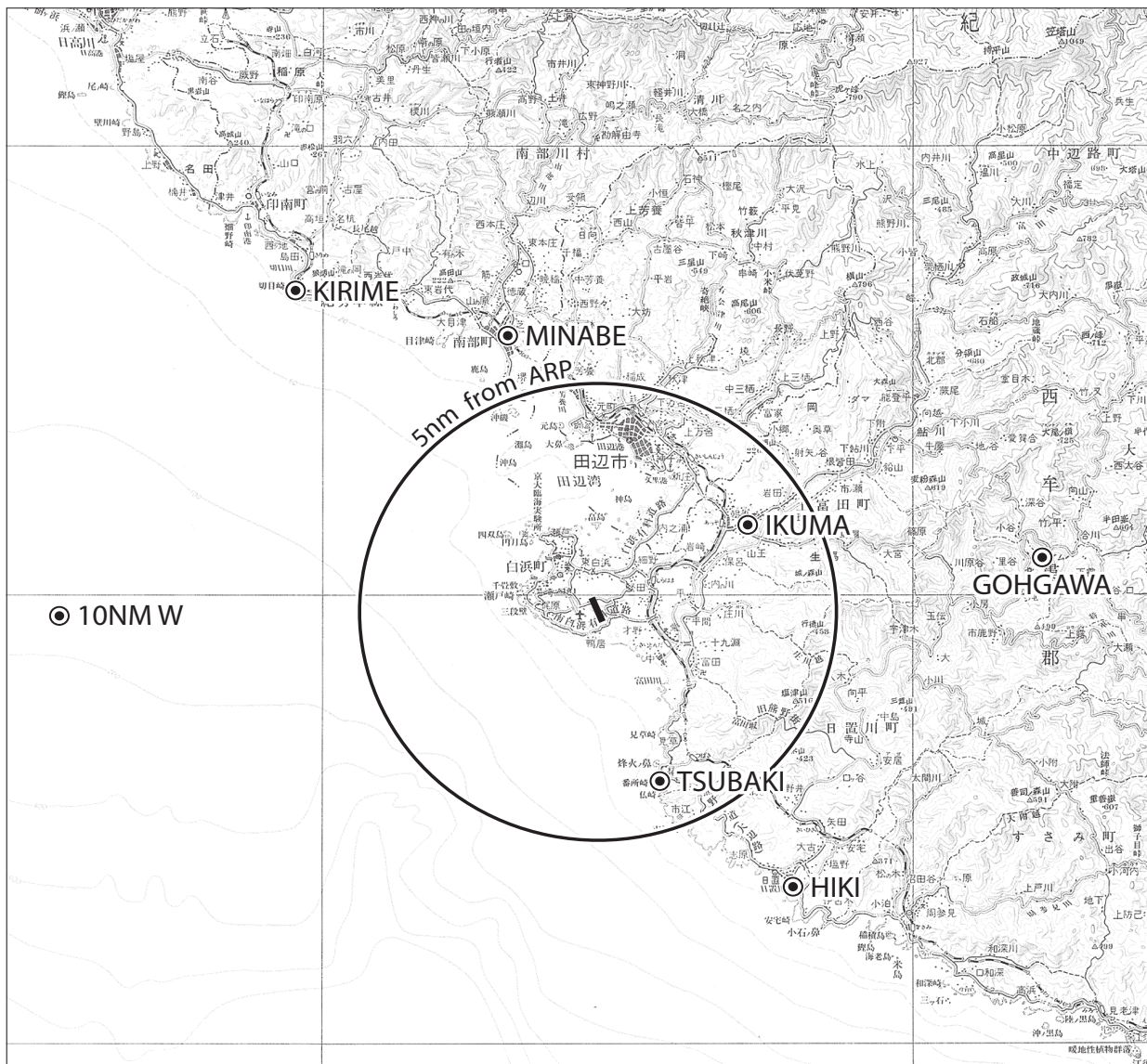
Remain within 14nm of NKE

MINIMA		AD elev. 293
CAT	CIRCLING	
	MDA(H)	VIS
A	840 (547)	1600
B		2400
C		3200
D	1160 (867)	

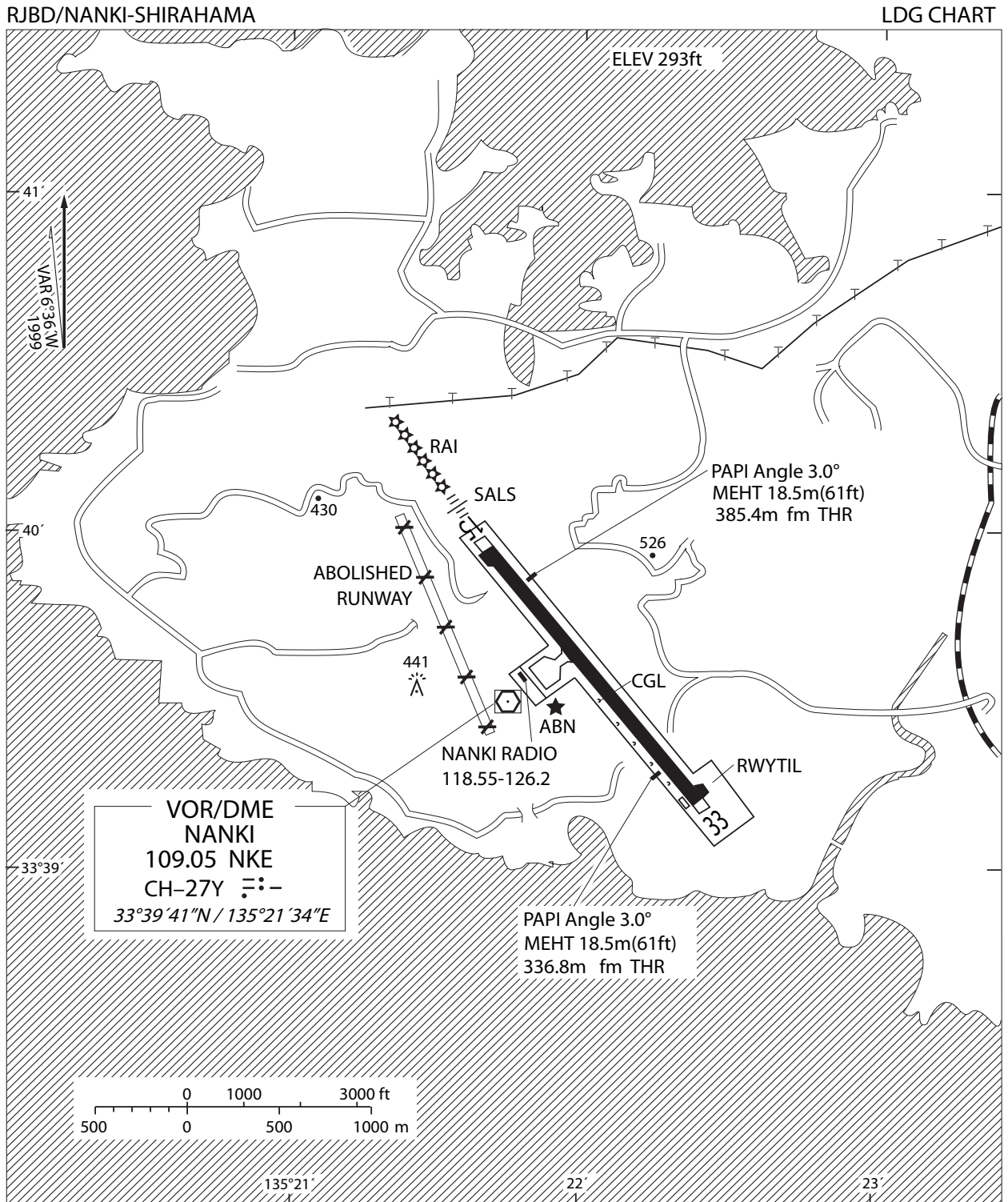
Circling to west side of RWY only.

RJBD/NANKI-SHIRAHAMA

Visual REP

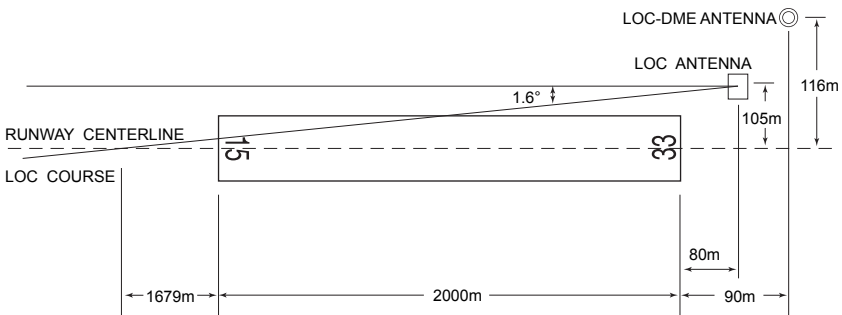


Call sign	BRG / DIST from ARP	Remarks
切目 Kirime	325°/9.5NM	岬 Cape
南部 Minabe	349°/6.5NM	JR駅 Station
10NM W	270°/10.0NM	海上 Over the sea
合川 Gohgawa	090°/10.0NM	ダム Dam
椿 Tsubaki	167°/4.0NM	高層ビル High Building
日置 Hiki	149°/7.0NM	日置川河口中州 River-mouth
生馬 Ikuma	072°/4.0NM	橋 Truss-bridge



注：南紀白浜空港の西側に廃止された滑走路が（なお、禁止標識が5カ所設置されている）視認できる状態にあるので、南紀白浜空港に着陸する航空機は当該滑走路と誤認しないように注意すること。

NOTE : There is remained the abolished runway with 5 cross[×] markings at west side of Nanki-Shirahama Airport. As the abolished runway in shape is visible, the aircraft which will land on Nanki-Shirahama Airport shall pay a special attention not to confuse the runway.



REMARKS : 1. LOC OFF SET ANGLE 1.6°
 2. LOC beam BRG(MAG) 146°
 3. ELEV of LOC-DME 85.9m(282ft)

RWY Turn Pads are installed as shown in below figure, and procedures for 180° turn on RWY is established for RWY 15 and 33 as follows :

- a: Proceed along the RWY Center Line to the starting point of the RWY Turn Pad Center Line Marking ; then
- b: Proceed along the RWY Turn Pad Center Line Marking to see the Turning Point Indicator Light 1 on a straight line, then commence turn at the spot where you (pilot) can see Turning Point Indicator Light 2 on a straight line at angle of 9 o'clock. When turning, take MAX STEERING ANGLE.

NANKI-SHIRAHAMA AP

