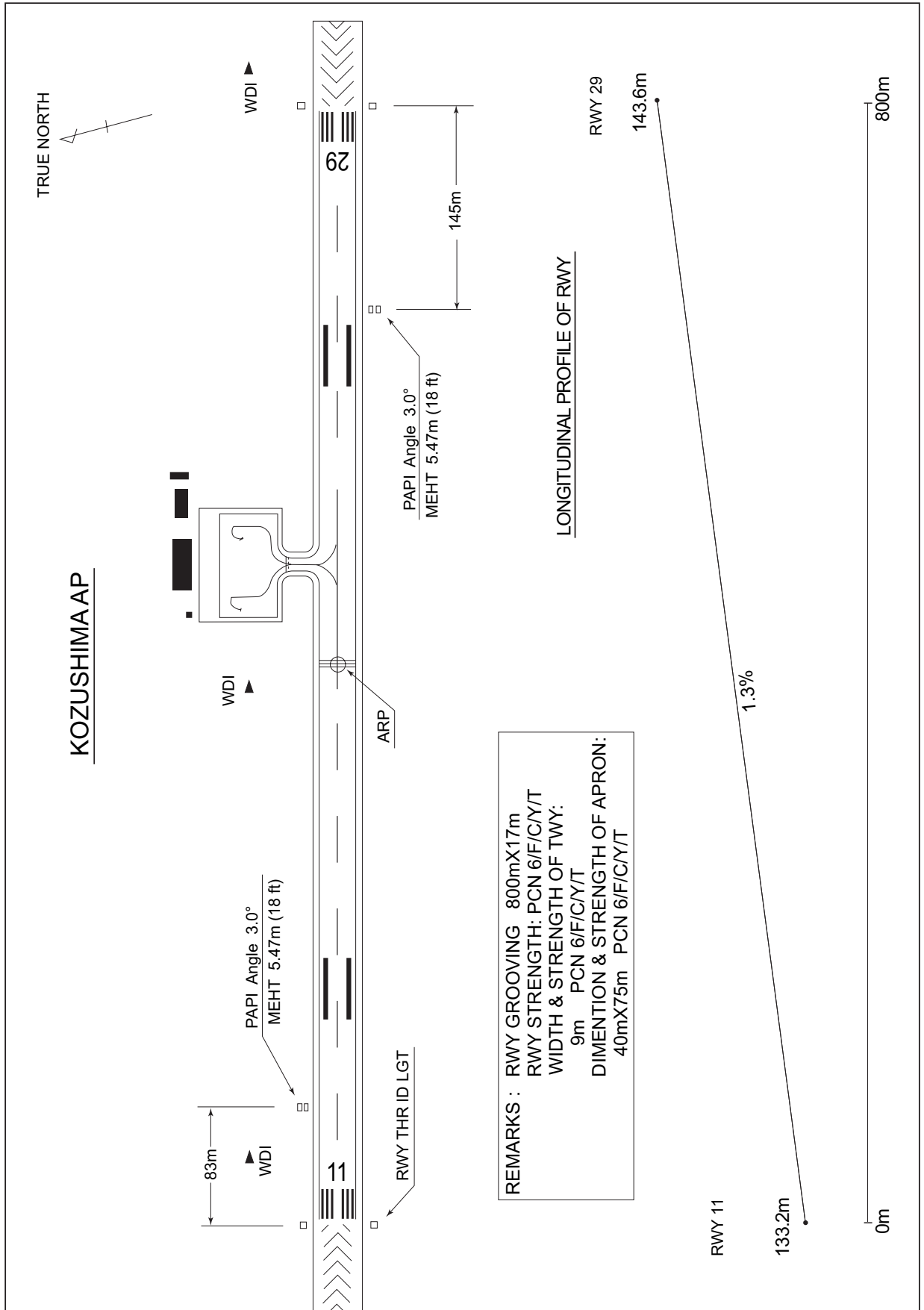


RJAZ / KOZUSHIMA

AD CHART



RJAZ / KOZUSHIMA

SID

NIIJIMA ONE DEPARTURE

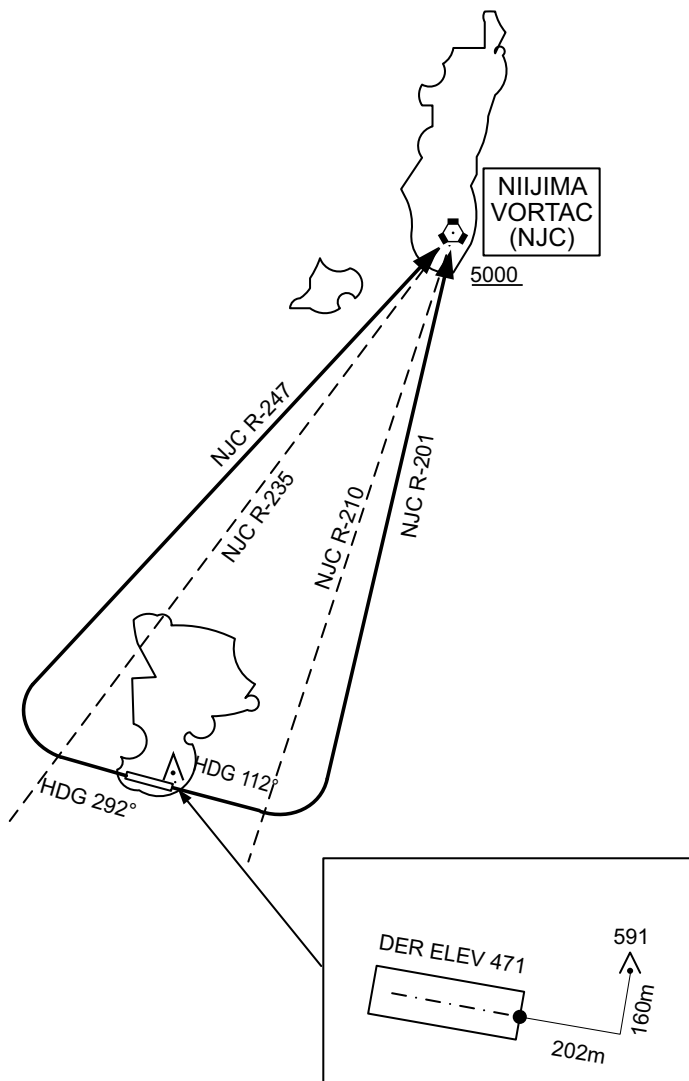
RWY11 : Climb RWY HDG until NJC R-210, turn left to intercept and proceed via NJC R-201....

RWY29 : Climb RWY HDG until NJC R-235, turn right to intercept and proceed via NJC R-247....

....to NJC VORTAC

Cross NJC VORTAC at or above 5,000ft.

Note : When Take off from RWY11, high terrain exists at 202m from DER, 160m left of centerline.

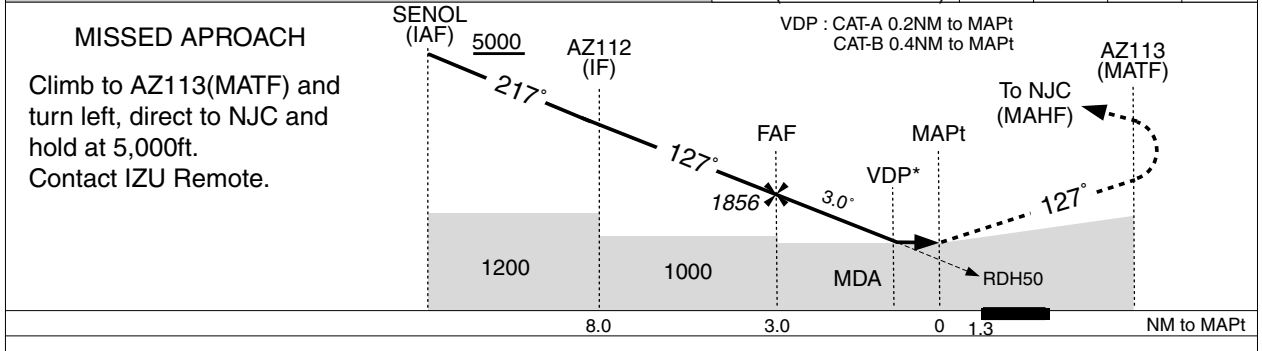
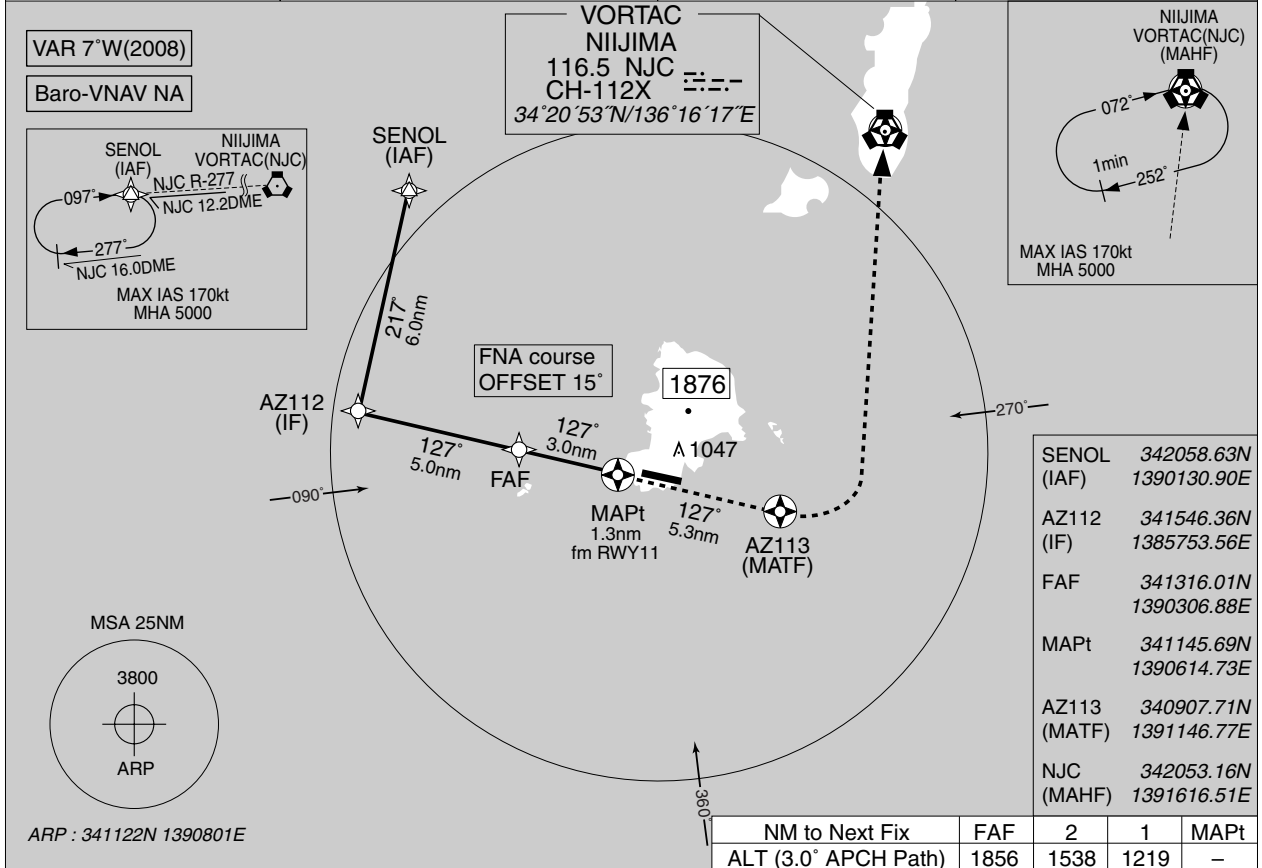


INSTRUMENT APPROACH CHART

RJAZ / KOZUSHIMA

RNAV (GNSS) RWY11

TOKYO CONTROL 133.7 – 133.35 309.4 – 312.0	Remarks: 1. DME/DME RNP0.3 not required. 2. RNP 0.3 required. 3. GNSS required.	IZU REMOTE 124.3	NO RADAR
--	--	---------------------	----------



Missed APCH climb gradient MNM 5.0%

MINIMA		THR elev. 437		AD elev. 454		
CAT	LNAV/VNAV		LNAV		CIRCLING	
	DA(H)	CMV	MDA(H)	CMV	MDA(H)	VIS
A	-	-	910 (473)	1500	910 (456)	1600
B	-	-	960 (523)		960 (506)	
C	-	-	-	-	-	-
D	-	-	-	-	-	-

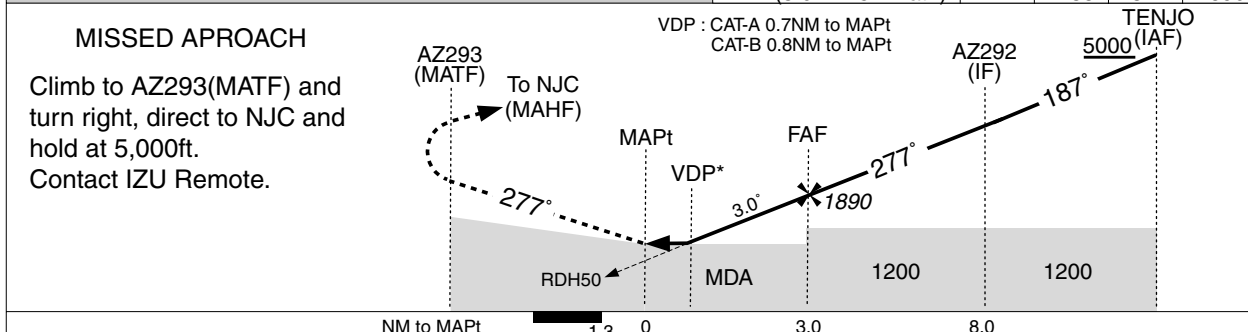
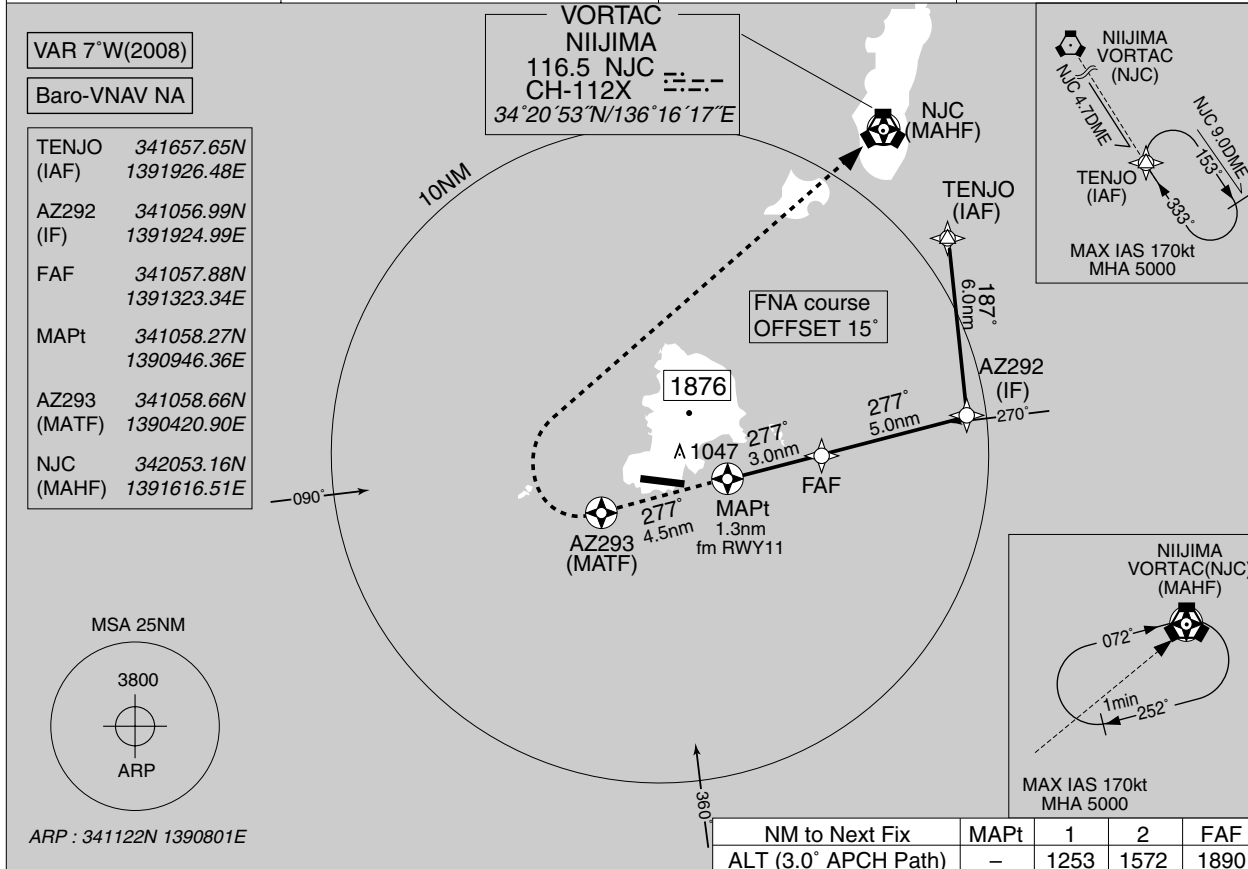
Circling to SOUTH side of RWY only.  
MINIMA with Missed APCH climb gradient of 2.5% are not established.

INSTRUMENT APPROACH CHART

RJAZ / KOZUSHIMA

RNAV (GNSS) RWY29

TOKYO CONTROL 133.7 – 133.35 309.4 – 312.0	Remarks: 1. DME/DME RNP0.3 not required. 2. RNP 0.3 required. 3. GNSS required.	IZU REMOTE 124.3	NO RADAR
--	--	---------------------	----------



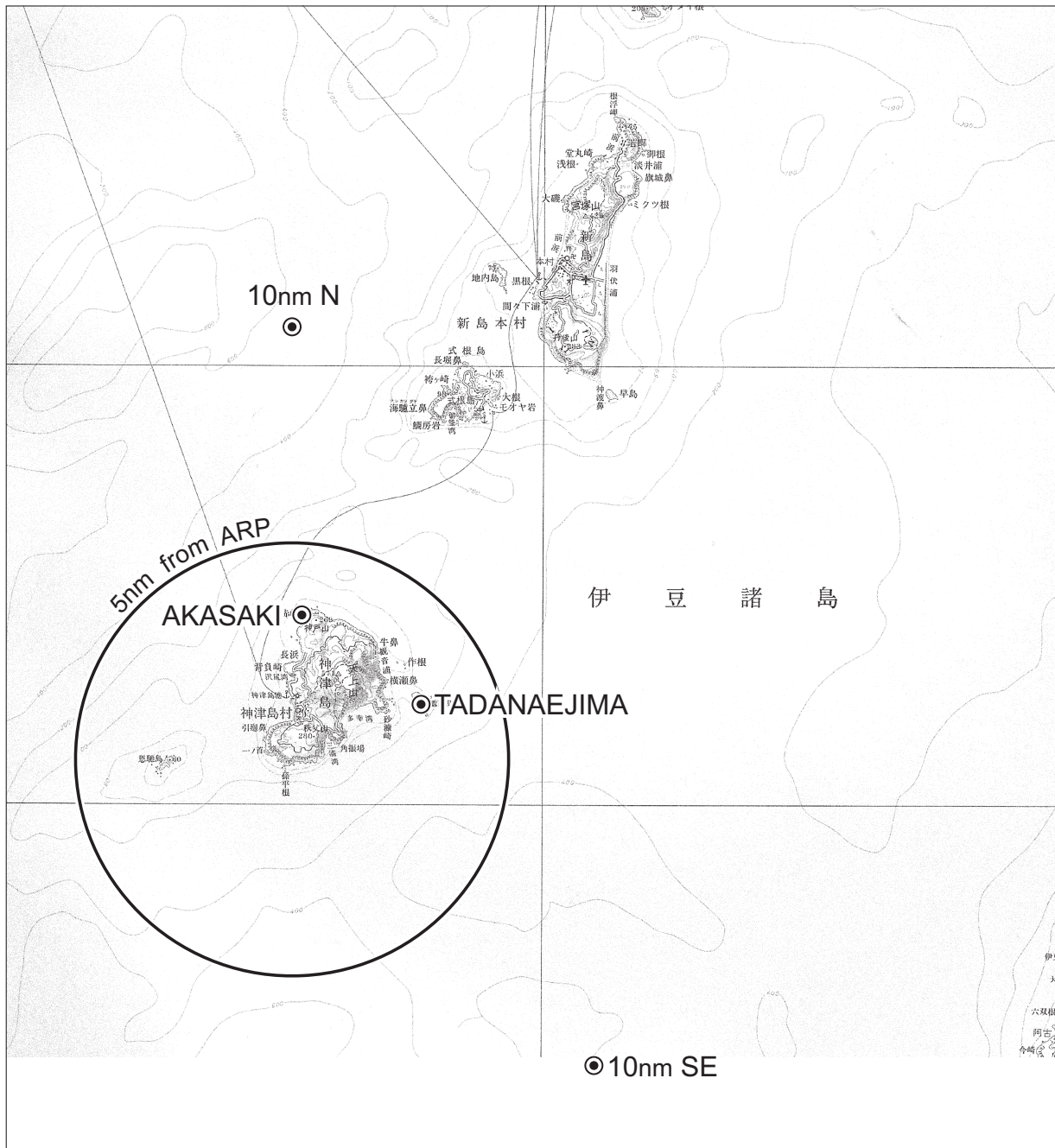
Missed APCH climb gradient MNM 3.0%

<b>MINIMA</b>		THR elev. 471		AD elev. 454		
CAT	LNAV/VNAV		LNAV		CIRCLING	
	DA(H)	CMV	MDA(H)	CMV	MDA(H)	VIS
A	-	-	1090 (636)	1500	1090 (636)	1600
B	-	-	1110 (656)		1110 (656)	
C	-	-	-	-	-	-
D	-	-	-	-	-	-

Circling to SOUTH side of RWY only.  
MINIMA with Missed APCH climb gradient of 2.5% are not established.

RJAZ / KOZUSHIMA

Visual REP



Call sign	BRG / DIST from ARP	Remarks
10NM N	360°/10.0NM	海上 Over the sea
赤崎 Akasaki	009°/ 3.1NM	岬 Cape
祇苗島 Tadanaejima	076°/ 3.1NM	島 Island
10NM SE	135°/10.0NM	海上 Over the sea

Call IZU REMOTE on 124.3MHz

**INTENTIONALLY LEFT BLANK**