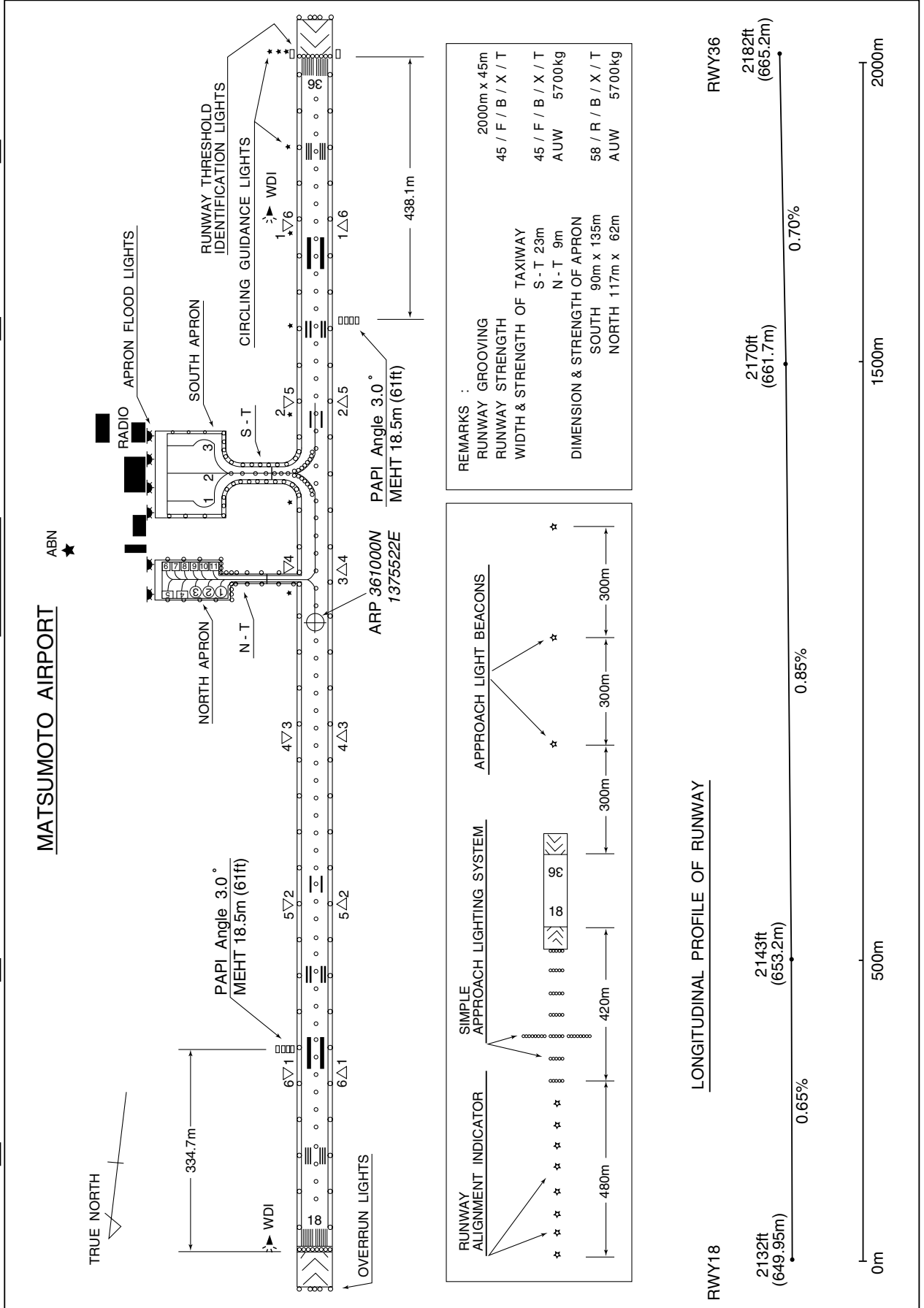


RJAF / MATSUMOTO

AD CHART



STANDARD DEPARTURE CHART-INSTRUMENT

RJAF / MATSUMOTO

SID

MATSUMOTO REVERSAL ONE DEPARTURE

RWY 18 : Climb RWY HDG to 2700FT, turn left HDG321° to intercept and proceed via MBE R006 to 5.0DME, turn right direct to MBE VOR/DME.

Cross MBE R006/5.0DME at or above 6000FT, cross MBE VOR/DME at or above 10000FT.

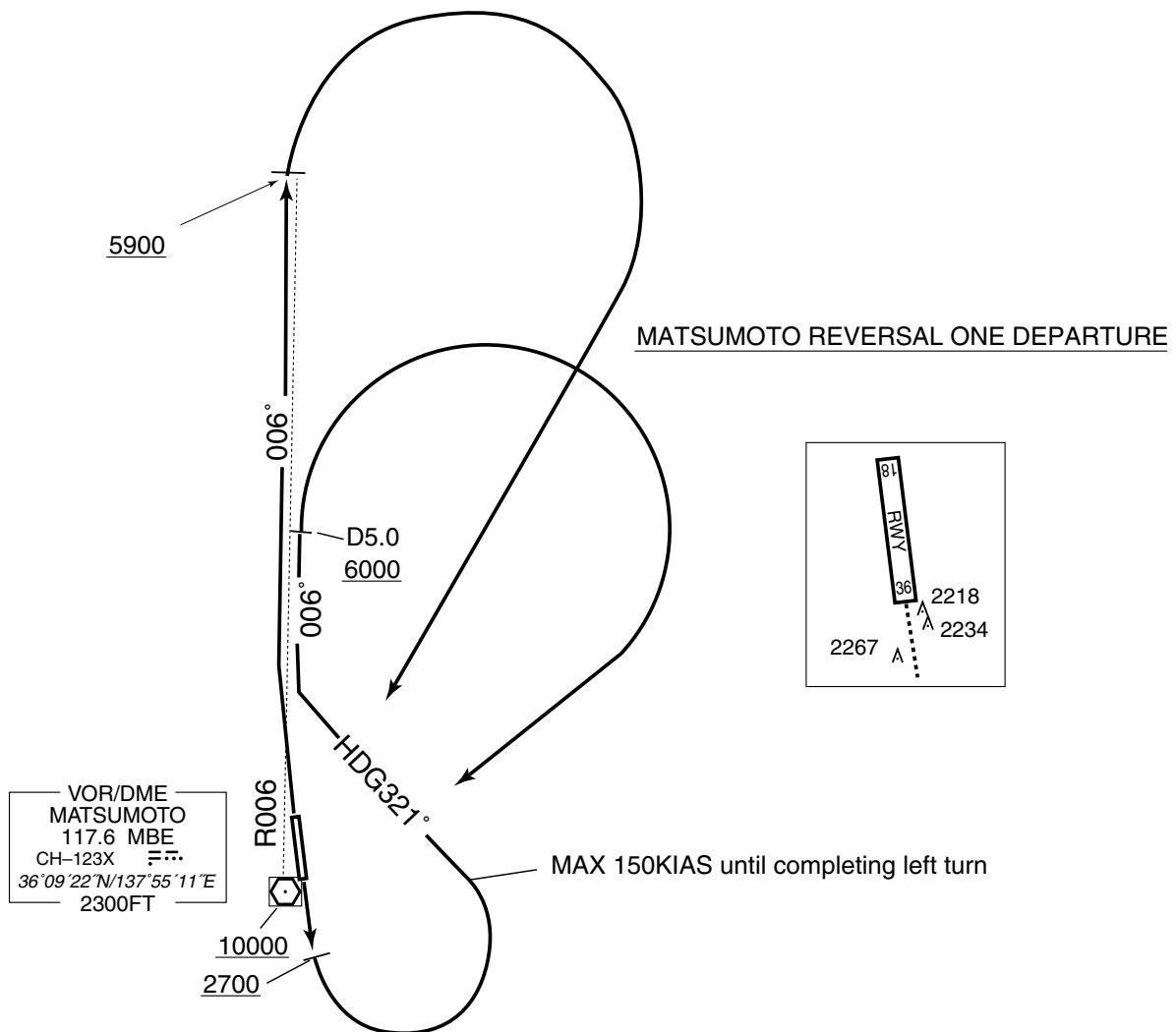
RWY 36 : Climb via MBE R006 to 5900FT, turn right direct to MBE VOR/DME.

Cross MBE VOR/DME at or above 10000FT.

NOTE RWY18 : 1) 6.6% climb gradient required up to 4200FT.

OBST ALT 3740FT located at 111°/4.40NM FM end of RWY18.

2) Departure turn limited to 150KIAS maximum until completing left turn.



STANDARD DEPARTURE CHART-INSTRUMENT

RJAF / MATSUMOTO

SID

HAPPO ONE DEPARTURE

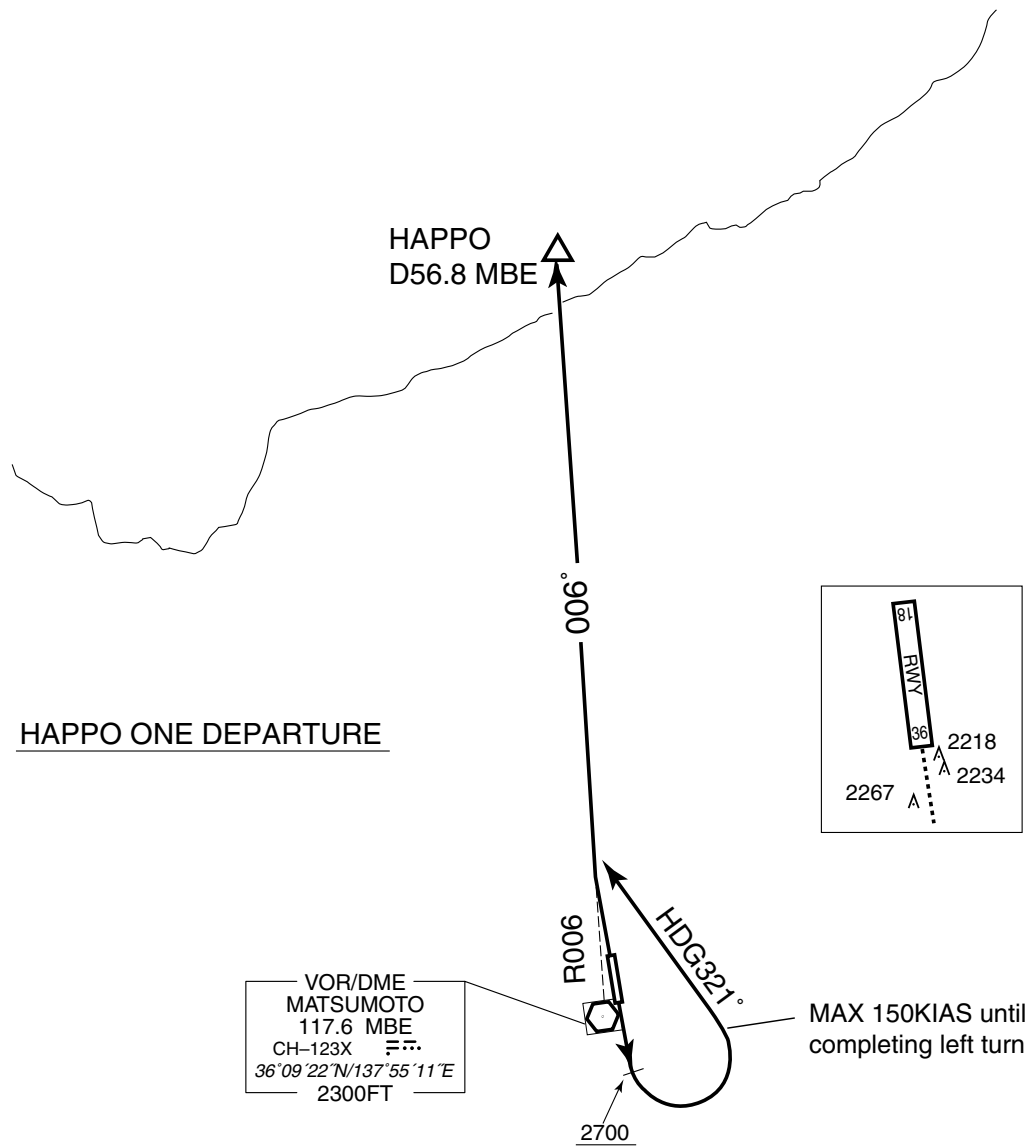
RWY 18 : Climb RWY HDG to 2700FT, turn left HDG321° to intercept and proceed via MBE R006 to HAPPO.

RWY 36 : Climb via MBE R006 to HAPPO.

NOTE RWY18 : 1) 6.6% climb gradient required up to 4200FT.

OBST ALT 3740FT located at 111°/4.40NM FM end of RWY18.

2) Departure turn limited to 150KIAS maximum until completing left turn.

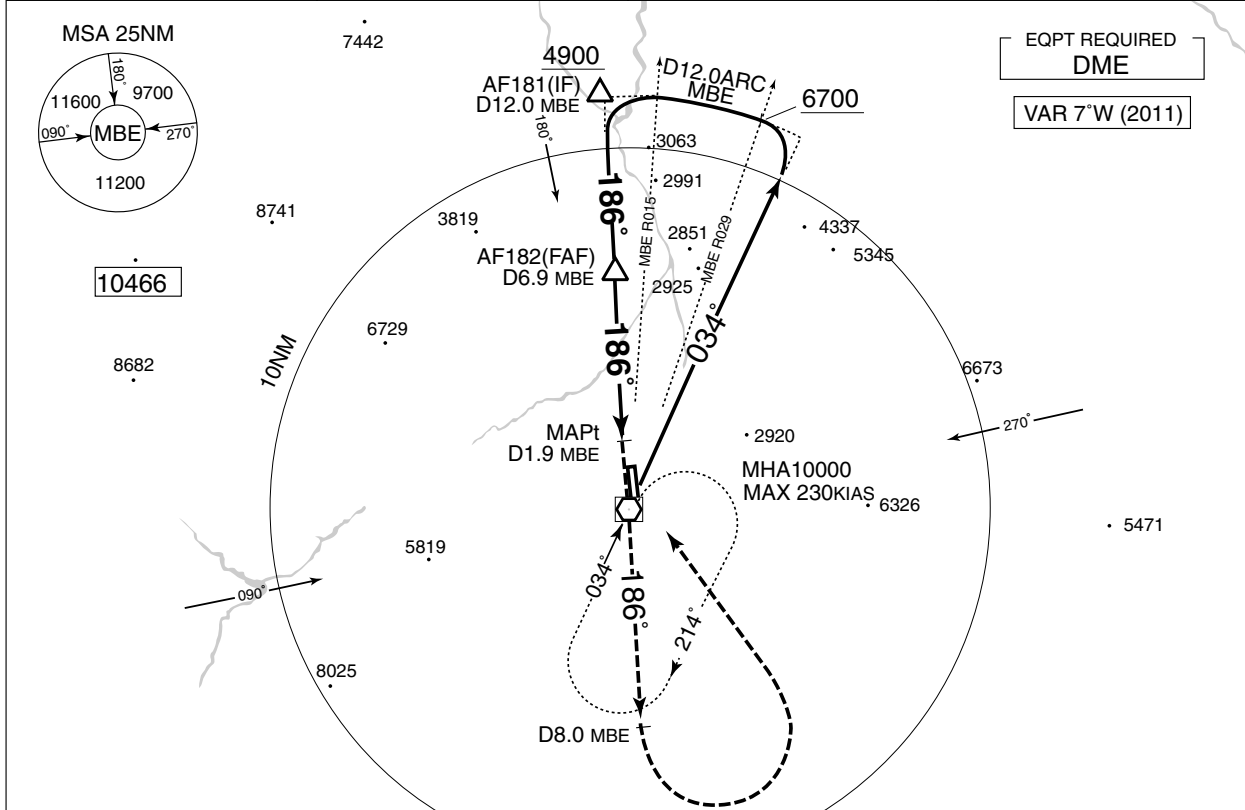


INSTRUMENT APPROACH CHART

RJAF / MATSUMOTO

VOR RWY 18

TOKYO CONTROL 132.45 - 125.6 304.4 - 317.1	MATSUMOTO VOR/DME 117.6 MBE CH-123X 36°09'22"N/137°55'11"E	MATSUMOTO RADIO 118.65 - 126.2	NO RADAR
--------------------------------------------------	---------------------------------------------------------------------	-----------------------------------	----------



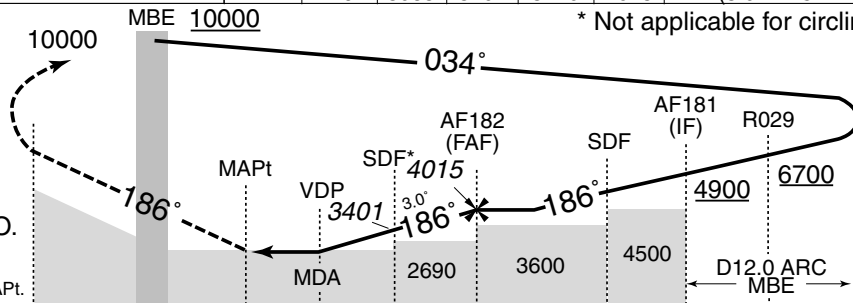
EQPT REQUIRED
DME
VAR 7°W (2011)

AF182(FAF) : 361617.34N/1375454.42E

MAPt	3	4	5	6	FAF	NM to MBE
-	2764	3083	3401	3720	4015	ALT (3.0° APCH Path)

MISSED APPROACH
Climb to 10000FT via MBE
R186 to 8.0DME, turn left
direct to MBE VOR/DME
and hold.
Contact MATSUMOTO RADIO.

Timing not authorized for defining the MAPt.



* Not applicable for circling

DME to MBE	8.0	1.9	2.4	5.0	6.9	10.0	12.0
NM to THR		0.7	1.2	3.8	5.7	8.8	10.8

Missed APCH climb gradient MNM 6.0%

MINIMA		THR elev. 2132	AD elev. 2157	
CAT			CIRCLING	
	MDA(H)	CMV	MDA(H)	VIS
A	2550 (418)	900	2700 (543)	1600
B		1000		
C			2830 (673)	2400
D	-	-	-	-

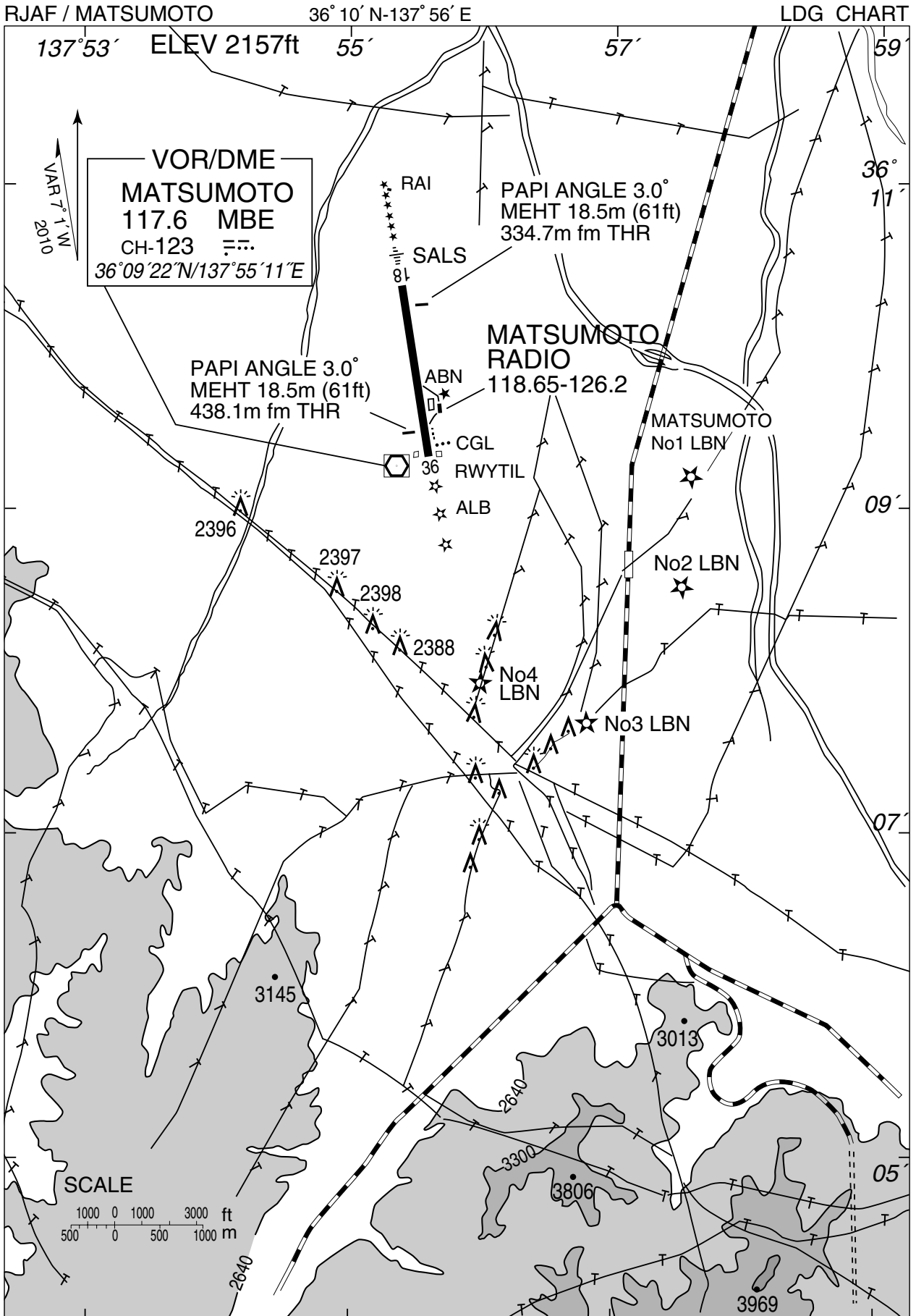
MINIMA with Missed APCH climb gradient of 2.5% are not established.
Circling to EAST side of RWY only.

RJAF / MATSUMOTO

Visual REP

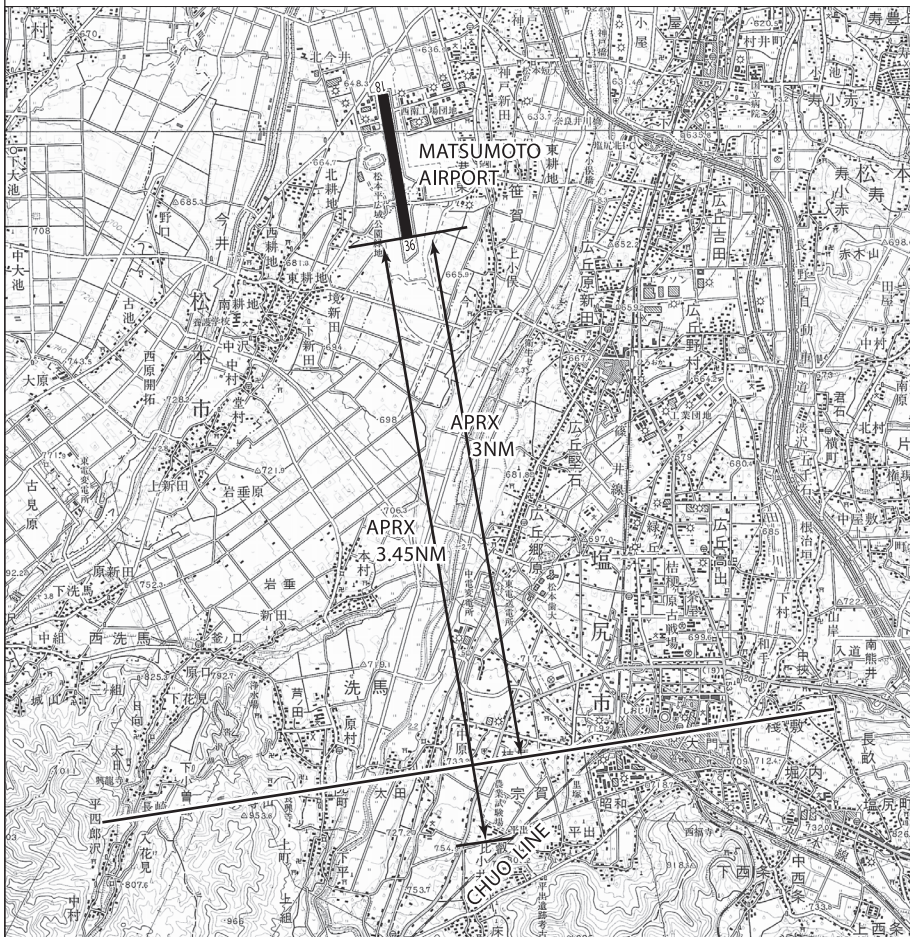


Call sign	BRG / DIST from ARP	Remarks
豊科 I/C Toyoshina I/C	008°/8.0NM	長野自動車道 豊科 I/C Inter-change
松本ステーション Matsumoto Station	036°/4.3NM	JR駅 Station
美ヶ原 Utsukushigahara	075°/9.6NM	美ヶ原王ヶ頭 Peak
島島 Shimashima	292°/5.0NM	松本電鉄新島島駅 Station
塩尻 I/C Shiojiri I/C	142°/4.1NM	長野自動車道 塩尻 I/C Inter-change
諏訪湖 Suwako	140°/10NM	諏訪湖上空 Lake
鳥居峠 Torii touge	213°/14.4NM	峠 Pass



滑走路36末端側進入角指示灯の使用範囲は、障害物（山及び送電線）のため滑走路36側末端から3NM以内とする。

Usable area of PAPI for runway 36 is within approx. 3NM from runway 36 threshold due to obstructions (mountain and power line).



SCALE

