

## AD 2 AERODROMES

## RORY AD 2.1 AERODROME LOCATION INDICATOR AND NAME

## RORY - YORON

## RORY AD 2.2 AERODROME GEOGRAPHICAL AND ADMINISTRATIVE DATA

1	ARP coordinates and site at AD	270238N/1282406E 034° / 600m FM RWY 14 THR
2	Direction and distance from (city)	1.58km WSW from central Yoron-town
3	Elevation/ Reference temperature	47ft / 32°C(2004-2008)
4	Geoid undulation at AD ELEV PSN	
5	MAG VAR/ Annual change	
6	AD Administration, address, telephone, telefax, telex, AFS, e-mail and/or Web-site addresses	KAGOSHIMA Pref. Public AP. 517, Tachinaga, Yoron-cho, Oshima-gun, Kagoshima Pref. 891-9302, JAPAN TEL: 0997-97-3465 FAX: 0997-97-3545,0997-97-3465
7	Types of traffic permitted (IFR/VFR)	IFR/VFR
8	Remarks	Nil

## RORY AD 2.3 OPERATIONAL HOURS

1	AD Administration	2330 - 0930(APR - SEP) 2330 - 0830(OCT - MAR)
2	Customs and immigration	On request Customs: 099-260-3125 Immigration: 099-222-5658
3	Health and sanitation	Quarantine(human): On request(099-222-8670) Quarantine(animal, plant): Nil
4	AIS Briefing Office	Nil
5	ATS Reporting Office(ARO)	Nil
6	MET Briefing Office	H24 (FUKUOKA)
7	ATS	ATS: 2330 - 0930(APR - SEP) 2330 - 0830(OCT - MAR) REMARKS: Airport Remote Mobile Communication Service provided by Kagoshima FSC.
8	Fuelling	2330 - 0930(APR - SEP) 2330 - 0830(OCT - MAR)
9	Handling	2330 - 0930(APR - SEP) 2330 - 0830(OCT - MAR)
10	Security	2330 - 0930(APR - SEP) 2330 - 0830(OCT - MAR)
11	De-icing	Nil
12	Remarks	Nil

**RORY AD 2.4 HANDLING SERVICES AND FACILITIES**

1	Cargo-handling facilities	Not Available
2	Fuel/ oil types	JET-A1
3	Fuelling facilities/ capacity	By fuel truck 4000L/h
4	De-icing facilities	Not Available
5	Hangar space for visiting aircraft	Not Available
6	Repair facilities for visiting aircraft	Not Available
7	Remarks	Nil

**RORY AD 2.5 PASSENGER FACILITIES**

1	Hotels	Hotels in the city
2	Restaurants	Available, Not continuous
3	Transportation	Buses, Taxies
4	Medical facilities	Hospitals in the city
5	Bank and Post Office	Bank and Post Office in the city
6	Tourist Office	Not Available
7	Remarks	Nil

**RORY AD 2.6 RESCUE AND FIRE FIGHTING SERVICES**

1	AD category for fire fighting	CAT 6
2	Rescue equipment	Chemical fire fighting truck x 2
3	Capability for removal of disabled aircraft	Nil
4	Remarks	Nil

**RORY AD 2.7 SEASONAL AVAILABILITY-CLEARING**

1	Types of clearing equipment	Not applicable
2	Clearance priorities	Not applicable
3	Remarks	Nil

**RORY AD 2.8 APRONS, TAXIWAYS AND CHECK LOCATIONS DATA**

1	Apron surface and strength	Surface : Asphalt-concrete Strength : PCN 18/F/D/Y/T
2	Taxiway width, surface and strength	Width : 18m Surface : Asphalt-concrete Strength : PCN 18/F/D/Y/T
3	ACL and elevation	Nil
4	VOR checkpoints	Nil
5	INS checkpoints	Nil
6	Remarks	Nil

**RORY AD 2.9 SURFACE MOVEMENT GUIDANCE AND CONTROL SYSTEM AND MARKINGS**

1	Use of aircraft stand ID signs, TWY guide lines and Visual docking/ parking guidance system of aircraft stands	Nil
2	RWY and TWY markings and LGT	RWY:(RWY14/32) (Marking) RWY designation, RWY CL, RWY THR, RWY middle point, Aiming point, TDZ, RWY side stripe TWY: (Marking) TWY CL, TWY side stripe, RWY HLDG PSN
3	Stop bars	Nil
4	Remarks	Nil

**RORY AD 2.10 AERODROME OBSTACLES**

In Area2 Nil

In Area3 To be developed

## RORY AD 2.11 METEOROLOGICAL INFORMATION PROVIDED

1	Associated MET Office	FUKUOKA
2	Hours of service MET Office outside hours	H24 (FUKUOKA)
3	Office responsible for TAF preparation Periods of validity	Nil
4	Trend forecast Interval of issuance	Nil
5	Briefing/ consultation provided	Briefing is available upon inquiry at FUKUOKA
6	Flight documentation Language(s) used	C En
7	Charts and other information available for briefing or consultation	S <sub>6</sub> , U <sub>85</sub> , U <sub>7</sub> , U <sub>5</sub> , U <sub>3</sub> , U <sub>25</sub> , U <sub>2</sub> /T <sub>r</sub> , P <sub>S</sub> , P <sub>5</sub> , P <sub>3</sub> , P <sub>25</sub> , P <sub>SWE</sub> , P <sub>SWF</sub> , P <sub>SWG</sub> , P <sub>SWI</sub> , P <sub>SWM</sub> , P <sub>SW</sub> (domestic), E, C, W <sub>E</sub> , W <sub>F</sub> , W <sub>G</sub> , W <sub>I</sub> , W, N
8	Supplementary equipment available for providing information	Nil
9	ATS units provided with information	REMOTE
10	Additional information(limitation of service, etc.)	Nil

## RORY AD 2.12 RUNWAY PHYSICAL CHARACTERISTICS

Designations RWY NR	TRUE BRG	Dimensions of RWY(M)	Strength(PCN) and surface of RWY	THR coordinates THR geoid undulation	THR elevation and highest elevation of TDZ of precision APP RWY
1	2	3	4	5	6
14	138.03°	1200×30	PCN 18/F/D/Y/T		THR ELEV : 35.4FT
32	318.03°	1200×30	Asphalt-concrete		THR ELEV : 52.2FT
Slope of RWY	Strip Dimensions(M)	RESA(Overrun) Dimensions(M)	Remarks		
7	10	11	14		
See AD2.24. AD chart	1320×120	50x120	RWY Grooving:1200m×20m		
	1320×120	50x120			

## RORY AD 2.13 DECLARED DISTANCES

RWY Designator	TORA (m)	TODA (m)	ASDA (m)	LDA (m)	Remarks
1	2	3	4	5	6
14	1200	1200	1200	1200	Nil
32	1200	1200	1200	1200	Nil

**RORY AD 2.14 APPROACH AND RUNWAY LIGHTING**

RWY Designator	APCH LGT type LEN INTST	RTHL Color WBAR	PAPI (VASIS) Angle DIST FM THR MEHT	RTZL LEN	RCLL LEN Spacing Color INTST	REDL LEN Spacing Color INTST	RENL Color WBAR	STWL LEN Color
1	2	3	4	5	6	7	8	9
14	Nil	Nil	PAPI 3.0°/LEFT 237M 45FT	Nil	Nil	Nil	Nil	Nil
32	Nil	Nil	PAPI 3.0°/LEFT 286M 45FT	Nil	Nil	Nil	Nil	Nil
Remarks								
10								
RWY THR ID LGT for RWY 14/32 THR(Color : White)								

**RORY AD 2.15 OTHER LIGHTING, SECONDARY POWER SUPPLY**

1	ABN/IBN location, characteristics and hours of operation	Nil
2	LDI location and LGT Anemometer location and LGT	LDI : Nil Anemometer : RWY center, lighted
3	TWY edge and center line lighting	Nil
4	Secondary power supply / switch-over time	All LGT / Within 15 sec
5	Remarks	WDI LGT

**RORY AD 2.16 HELICOPTER LANDING AREA**

Nil
-----

**RORY AD 2.17 ATS AIRSPACE**

Designation and lateral limits		Vertical limits (ft)	Airspace classification	ATS unit call sign Language	Remarks
1		2	3	4	6
Yoron Information Zone	Area within a radius of 5nm(9km) of Yoron ARP excluding area within a radius of 60nm of NHC VORTAC	3,000 or below	E	Yoron Remote En	

## RORY AD 2.18 ATS COMMUNICATION FACILITIES

Service designation	Call sign	Frequency	Hours of operation	Remarks
1	2	3	4	5
A/G	Yoron Remote	118.3MHz	2330 - 0930 (1 APR - 30 SEP) 2330 - 0830 (1 OCT - 31 MAR)	Remote air-ground facilities controlled by Kagoshima FSC.

## RORY AD 2.19 RADIO NAVIGATION AND LANDING AIDS

Type of aid (VOR declination)	ID	Frequency	Hours of operation	Position of transmitting antenna coordinates	Elevation of DME transmitting antenna	Remarks
1	2	3	4	5	6	7
VOR (5°W / 2008)	YRE	112.25MHz	2330 - 0930(1) 2330 - 0830(2)	270239.75N/ 1282352.89E		(1)(1 APR - 30 SEP) (2)(1 OCT - 31 MAR)
DME	YRE	1146MHz (CH-59Y)	2330 - 0930(1) 2330 - 0830(2)	270239.75N/ 1282352.89E	74ft	
MSAS		1575.42MHz	H24			Transmitting antennas are satellite based

---

**RORY AD 2.20 LOCAL TRAFFIC REGULATIONS**

1. Airport regulations

Nil

2. Taxiing to and from stands

Nil

3. Parking area for small aircraft(General aviation)

Nil

4. Parking area for helicopters

Nil

5. Apron - taxiing during winter conditions

Nil

6. Taxiing - limitations

Nil

7. School and training flights - technical test flights - use of runways

Nil

8. Helicopter traffic - limitation

Nil

9. Removal of disabled aircraft from runways

Nil

**RORY AD 2.21 NOISE ABATEMENT PROCEDURES**

Nil

**RORY AD 2.22 FLIGHT PROCEDURES****TAKE OFF MINIMA**

	RWY	ACFT CAT	REDL & RCLL		REDL or RCLL or RCL marking		NIL (DAYTIME ONLY)	
			RVR	VIS	RVR	VIS	RVR	VIS
Multi-Engine ACFT-with TKOF ALTN AP Filed	14	A,B,C	-	-	-	400	-	500
	32							
OTHER	14	A,B,C	AVBL LDG MINIMA					
	32							

**RORY AD 2.23 ADDITIONAL INFORMATION**

Nil

**RORY AD 2.24 CHARTS RELATED TO AN AERODROME**

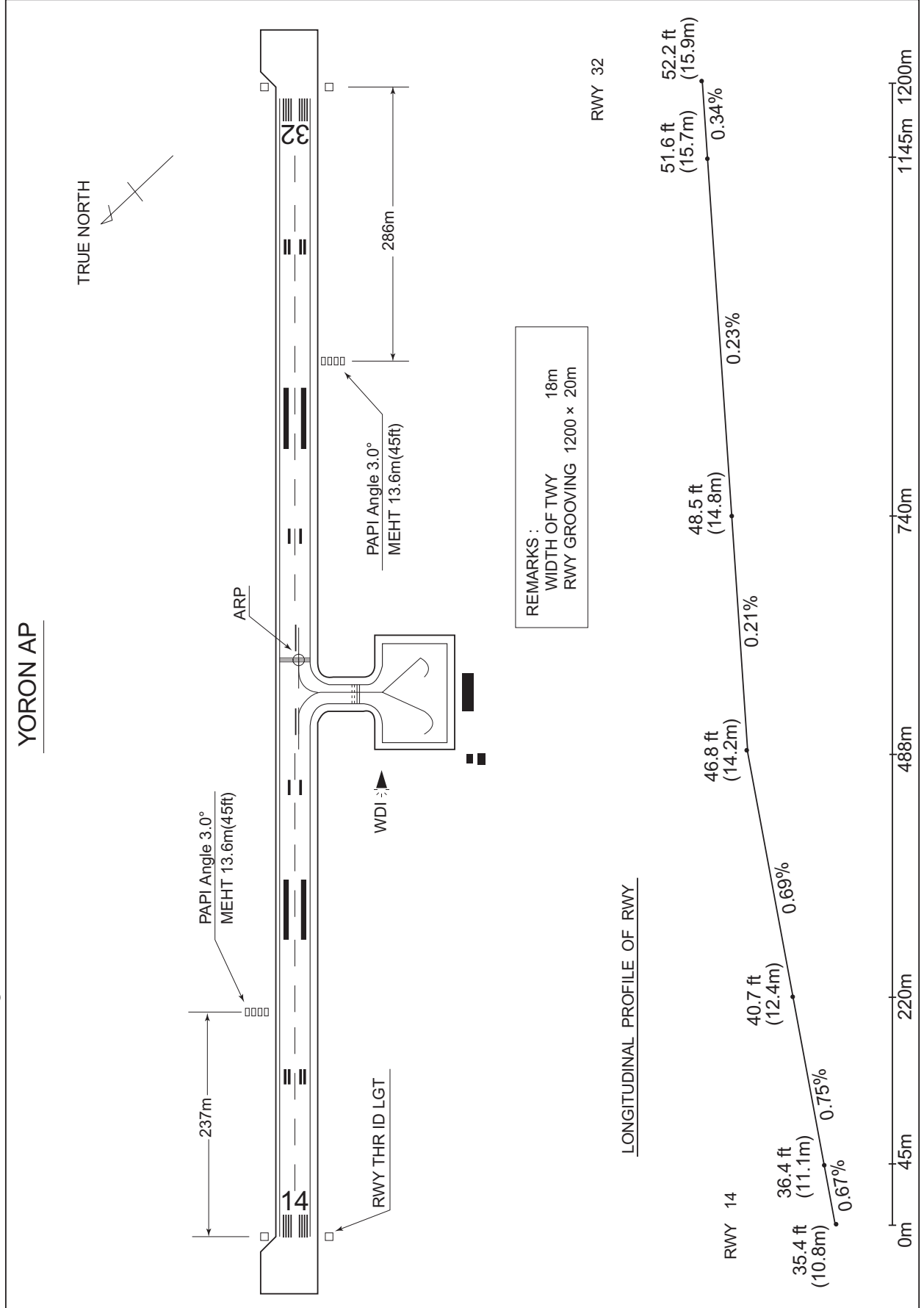
Aerodrome/Heliport Chart  
 Standard Departure Chart - Instrument  
 Standard Arrival Chart - Instrument  
 Instrument Approach Chart (VOR RWY14)  
 Instrument Approach Chart (VOR RWY32)  
 Instrument Approach Chart (VOR A)  
 Instrument Approach Chart (RNAV(GNSS) RWY14)  
 Instrument Approach Chart (RNAV(GNSS) RWY32)  
 Other Chart (Visual REP)  
 Other Chart (LDG CHART)  
 Other Chart (MVA CHART)



RORY / YORON

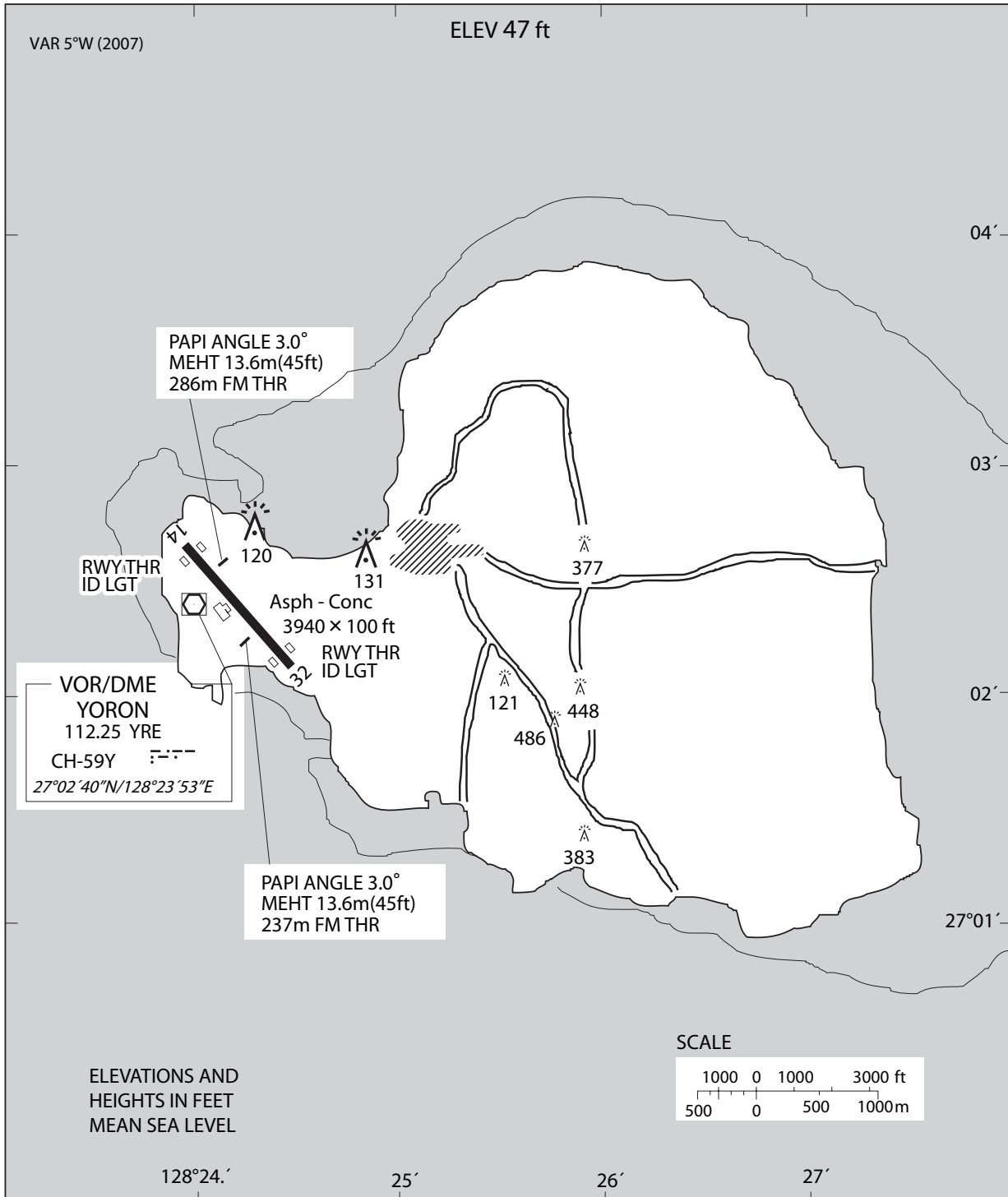
AD CHART

CHANGE : Overrun area marking erased.



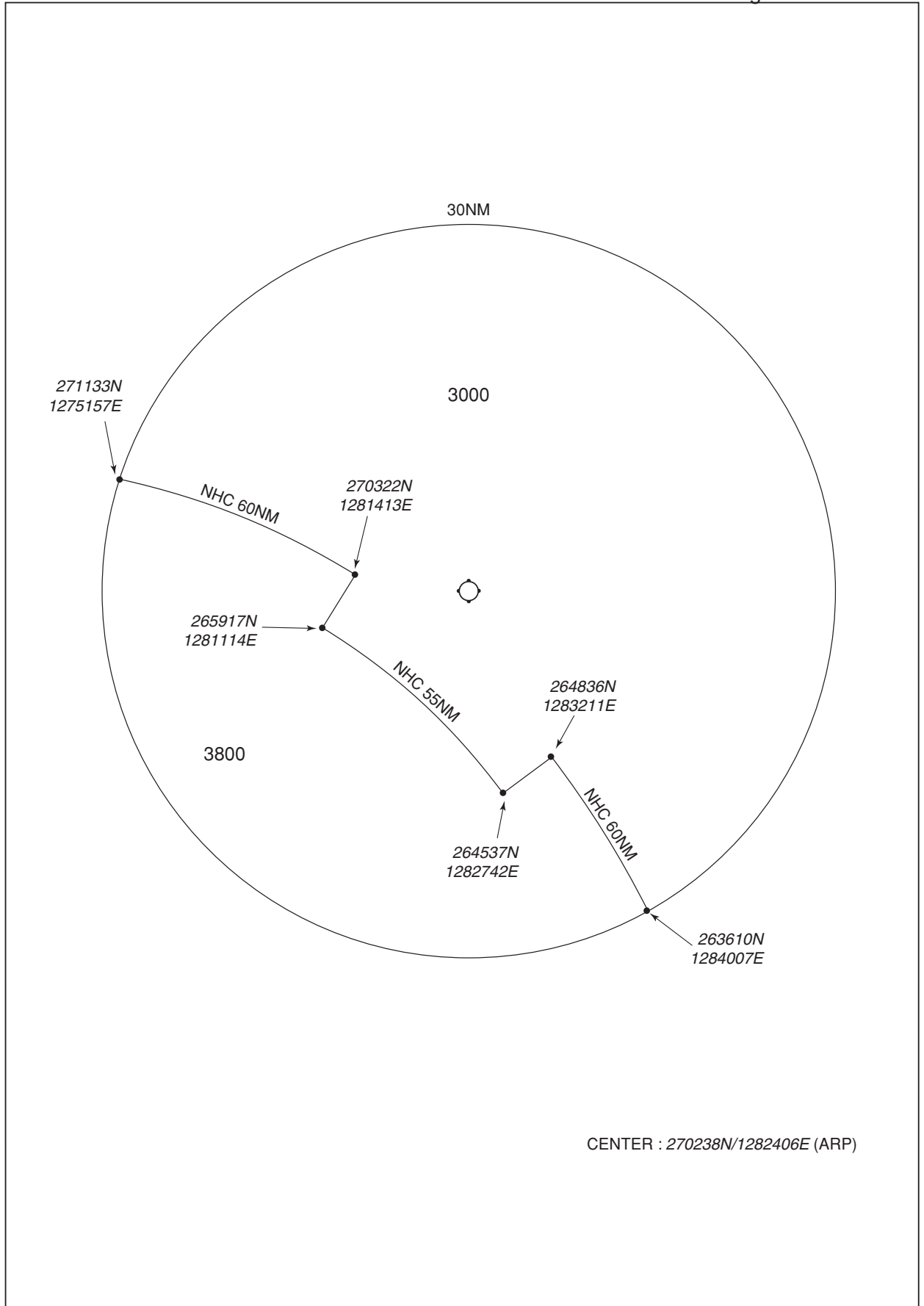
RORY / YORON

LDG CHART



RORY / YORON

Minimum Vectoring Altitude CHART



STANDARD DEPARTURE CHART-INSTRUMENT

RORY / YORON

SID and TRANSITION

MARIX TWO DEPARTURE

RWY14 : Climb RWY HDG until 800FT, turn left to intercept and proceed via ONC R205 to MARIX.

RWY32 : Climb RWY HDG until 500FT, turn right HDG092° to intercept and proceed via YRE R047 to MARIX.

Note : RWY14 : 4.4% climb gradient required up to 500FT.  
OBST ALT 361FT located at 1.44NM 125° FM end of RWY14.

HANZA THREE DEPARTURE

RWY14 : Climb RWY HDG until 700FT, turn right...

RWY32 : Climb RWY HDG until 500FT, turn right,...

...Climb via YRE R350, turn right to intercept TKE R230 to HANZA. Cross YRE R350/12.0DME at or below 5000FT, cross HANZA at assigned altitude.

Note : RWY14 : 4.4% climb gradient required up to 500FT.  
OBST ALT 361FT located at 1.44NM 125° FM end of RWY14.

ERABU TRANSITION

From over MARIX, proceed via ONC R205 to ONC VORTAC.

TOKUNOSHIMA TRANSITION

From over HANZA, proceed via TKE R230 to TKE VOR/DME.

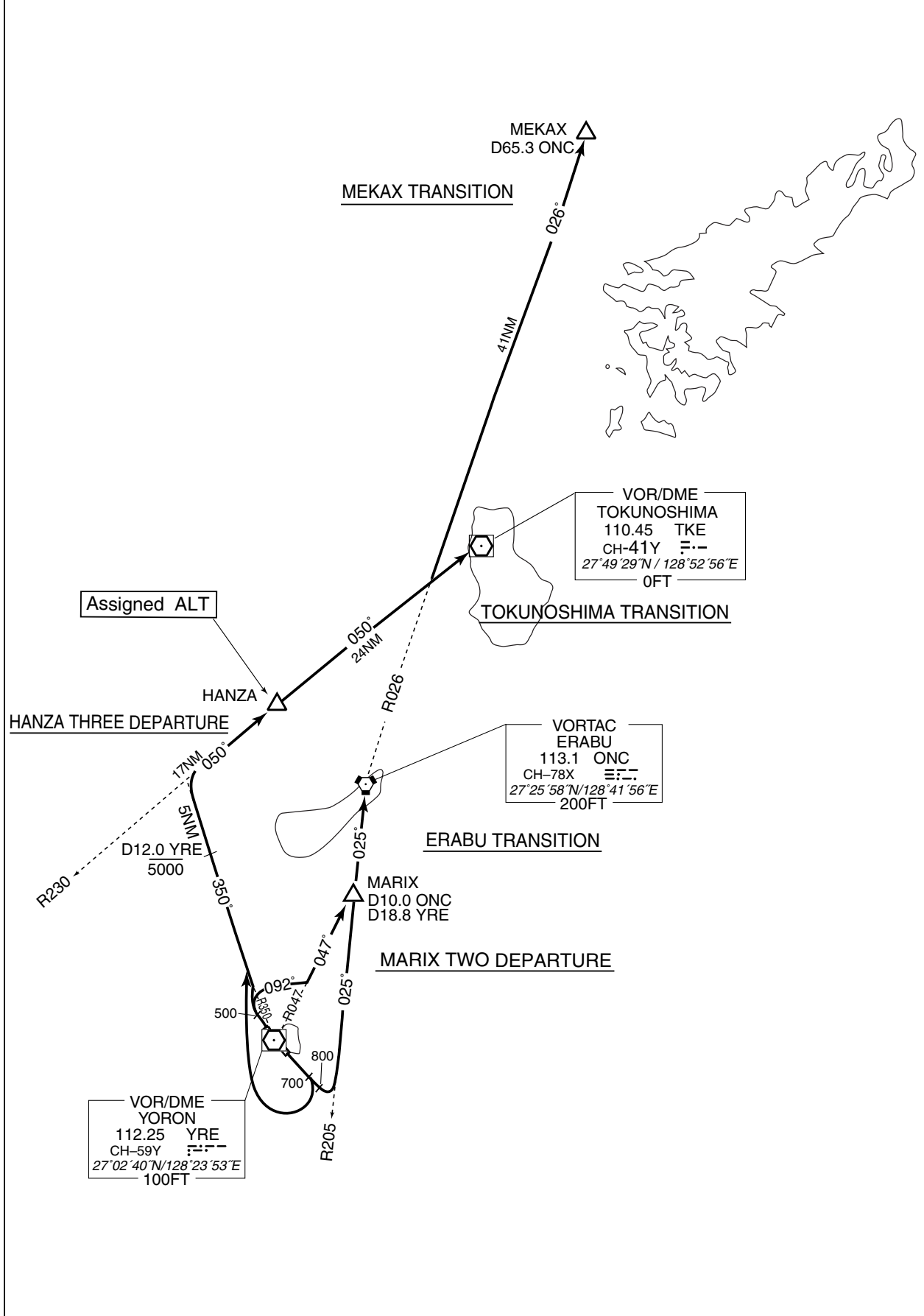
MEKAX TRANSITION

From over HANZA, proceed via TKE R230 to intercept and proceed via ONC R026 to MEKAX.

STANDARD DEPARTURE CHART-INSTRUMENT

RORY / YORON

SID and TRANSITION



STANDARD DEPARTURE CHART-INSTRUMENT

RORY / YORON

SID

OKUMA ONE DEPARTURE

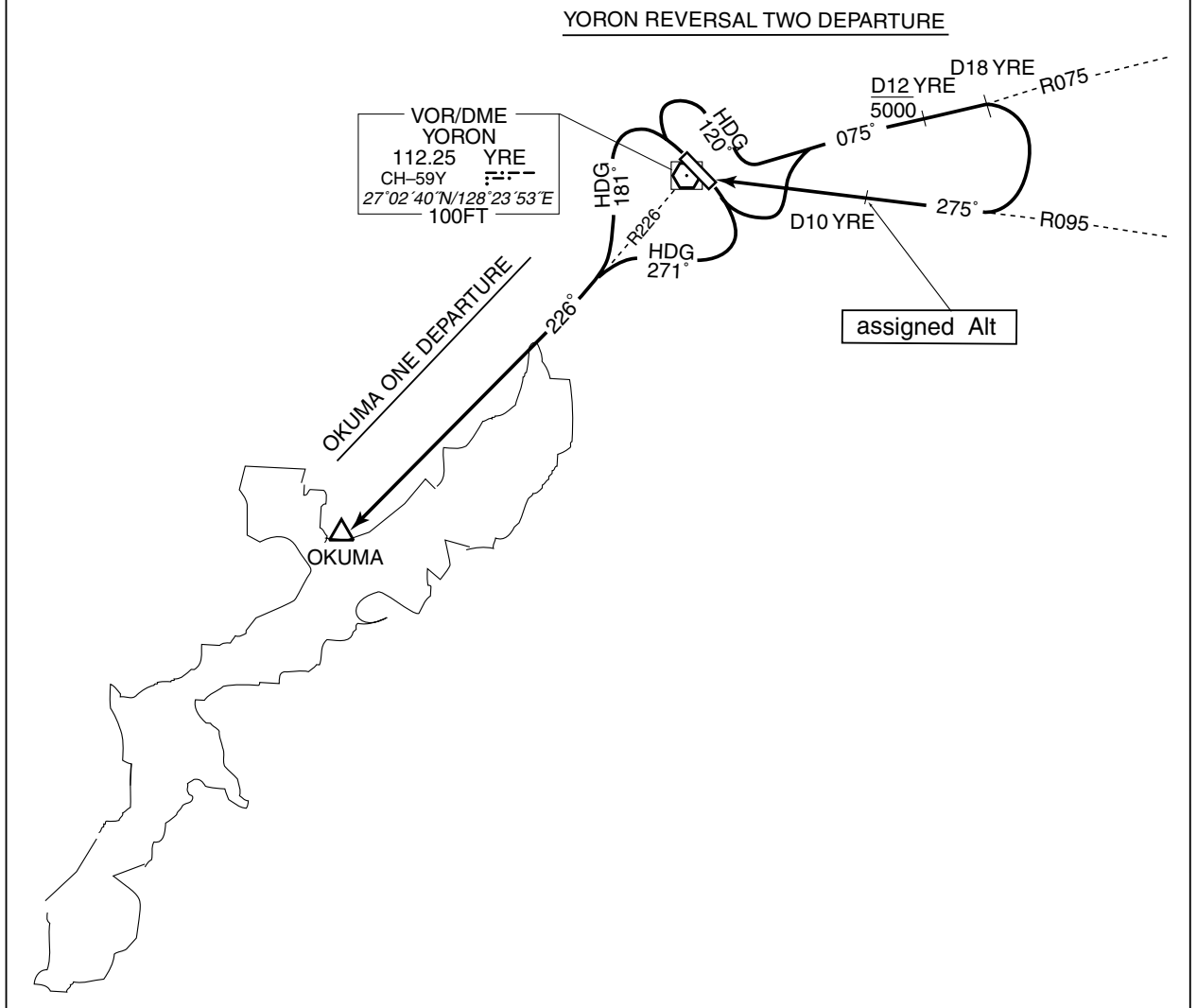
RWY14 : Climb RWY HDG until 700FT, turn right HDG 271° ,...  
RWY32 : Climb RWY HDG until 500FT, turn left HDG 181° ,...  
...to intercept and proceed via YRE R226 to OKUMA.

Note : RWY14 : 4.4% climb gradient required up to 500FT.  
OBST ALT 361FT located at 1.44NM 125° FM end of RWY14.

YORON REVERSAL TWO DEPARTURE

RWY14 : Climb RWY HDG until 800FT, turn left...  
RWY32 : Climb RWY HDG until 500FT, turn right HDG 120° ...  
...Climb via YRE R075 to YRE 18DME, turn right to intercept and proceed  
via YRE R095 to YRE VOR/DME. Cross YRE R075/12DME at or below  
5000FT, cross YRE R095/10DME at assigned altitude.

Note : RWY14 : 4.4% climb gradient required up to 500FT.  
OBST ALT 361FT located at 1.44NM 125° FM end of RWY14.



STANDARD ARRIVAL CHART-INSTRUMENT

RORY / YORON

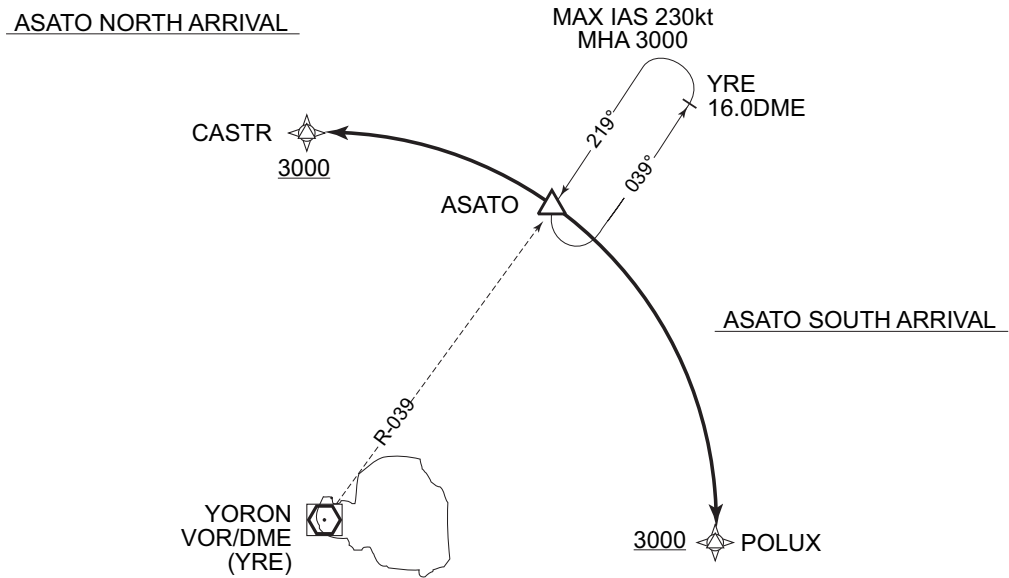
STAR

ASATO NORTH ARRIVAL

From over ASATO, via YRE 10DME counterclockwise ARC to CASTR.  
Cross CASTR at or above 3,000ft.

ASATO SOUTH ARRIVAL

From over ASATO, via YRE 10DME clockwise ARC to POLUX.  
Cross POLUX at or above 3,000ft.



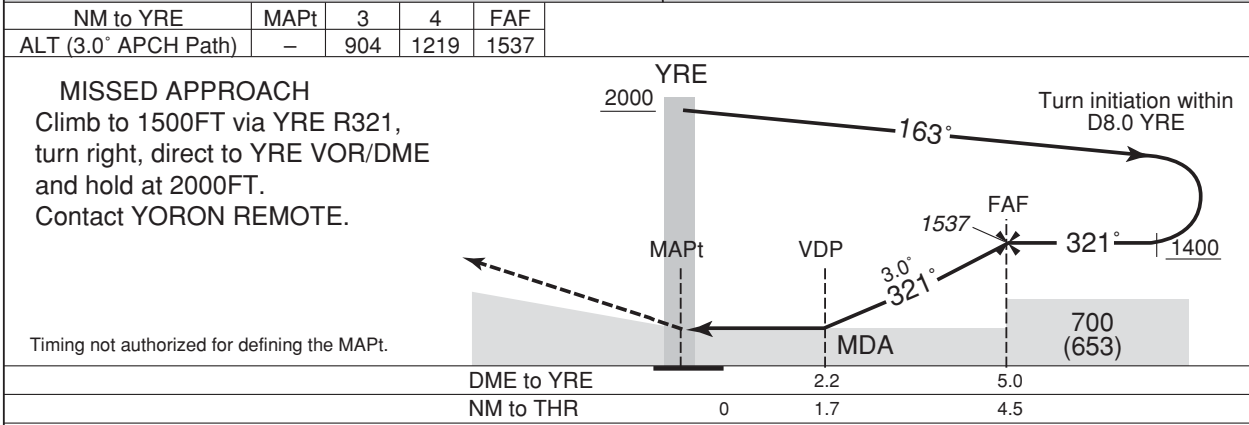
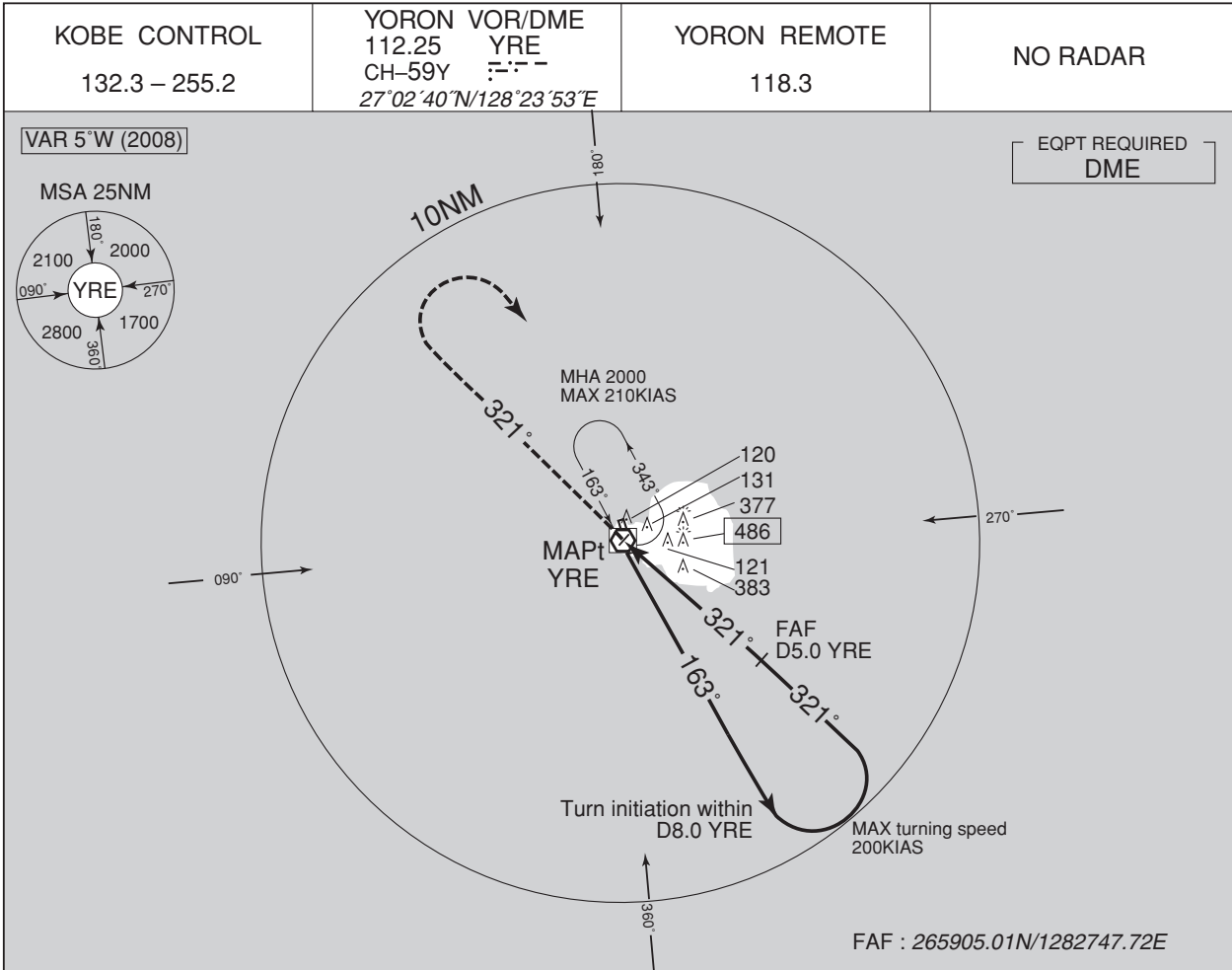




INSTRUMENT APPROACH CHART

RORY / YORON

VOR RWY32



CAT	MINIMA		THR elev. 52	AD elev. 47
	MDA(H)	CMV	CIRCLING	
A	630 (583)	1500	630 (583)	
B			1600	
C		2000	680 (633)	
D	-	-	-	

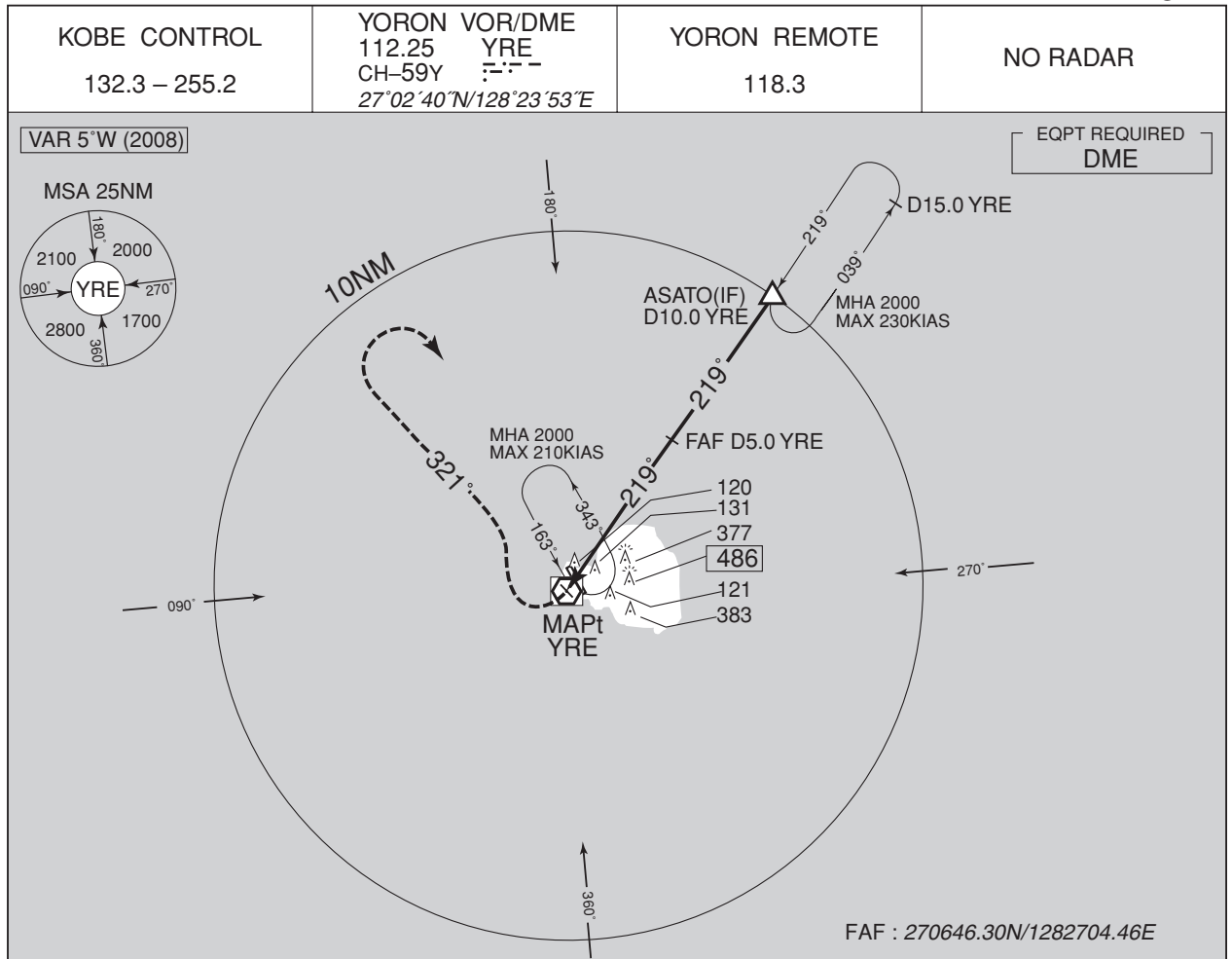
Circling to WEST side of RWY only.

CHANGE : COM

INSTRUMENT APPROACH CHART

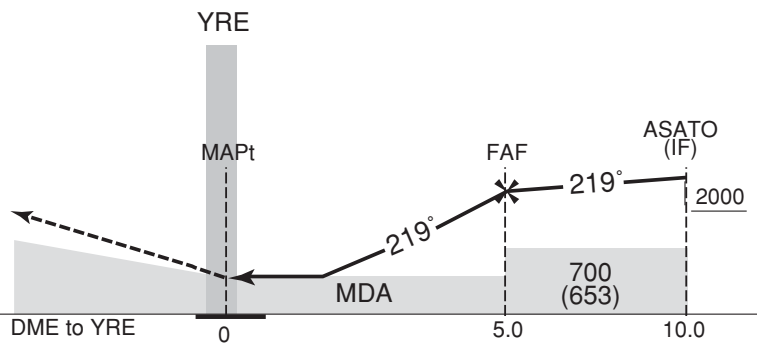
RORY / YORON

VOR A



**MISSED APPROACH**  
Turn right, climb to 1500FT,  
via YRE R321, turn right, direct to  
YRE VOR/DME and hold at 2000FT.  
Contact YORON REMOTE.

Timing not authorized for defining the MAPt.



<b>MINIMA</b>		AD elev. 47
CAT	CIRCLING	
	MDA(H)	VIS
A	530 (483)	1600
B	680 (633)	2400
C		-
D	-	-

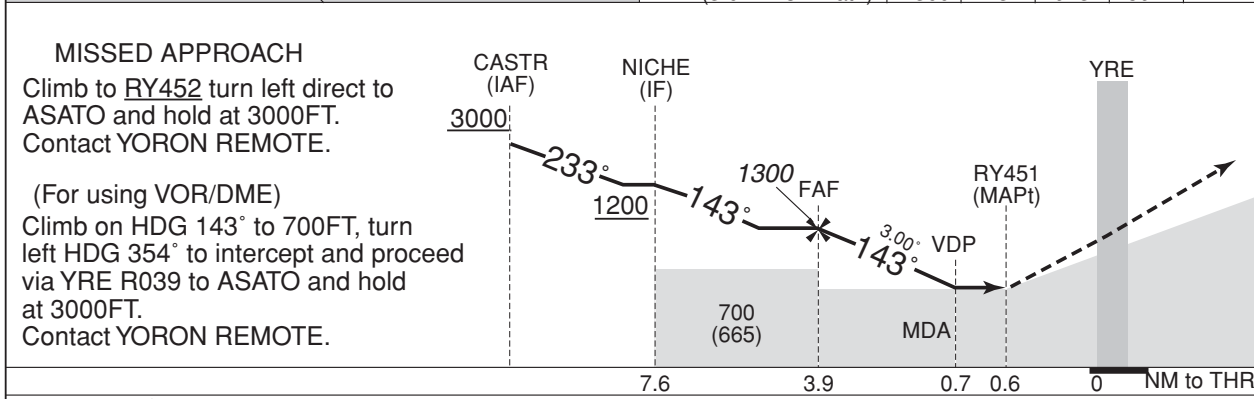
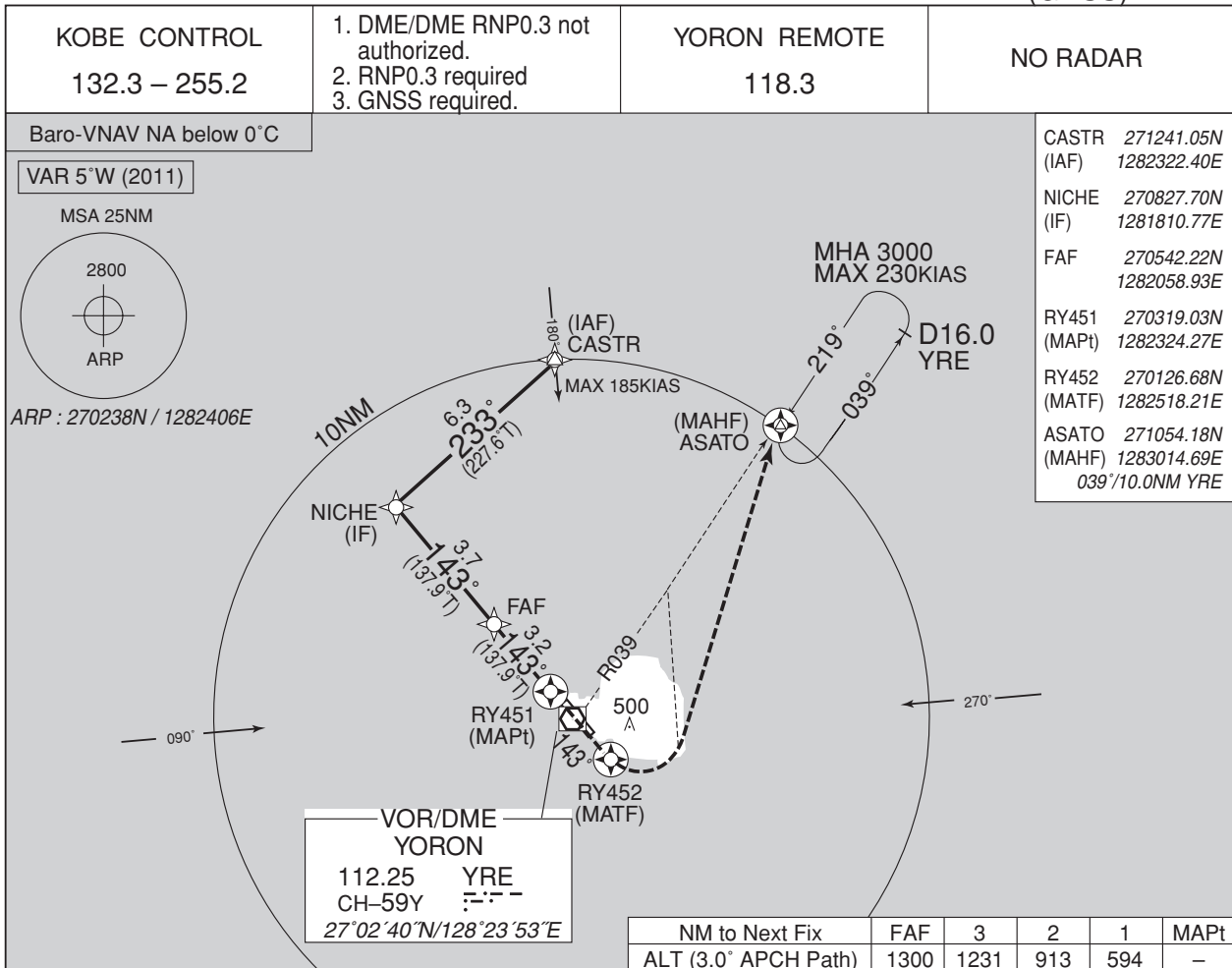
CHANGE : COM

Circling to WEST side of RWY only.

INSTRUMENT APPROACH CHART

RORY / YORON

RNAV(GNSS) RWY14



Missed APCH climb gradient MNM 5.0%

<b>MINIMA</b>		THR elev. 35	AD elev. 47			
CAT	LNAV/VNAV		LNAV		CIRCLING	
	DA(H)	CMV	MDA(H)	CMV	MDA(H)	VIS
A	322 (287)	1500	290 (255)	1500	530 (483)	1600
B		1600		1600	680 (633)	
C		—		—	—	—
D	—	—	—	—	—	—

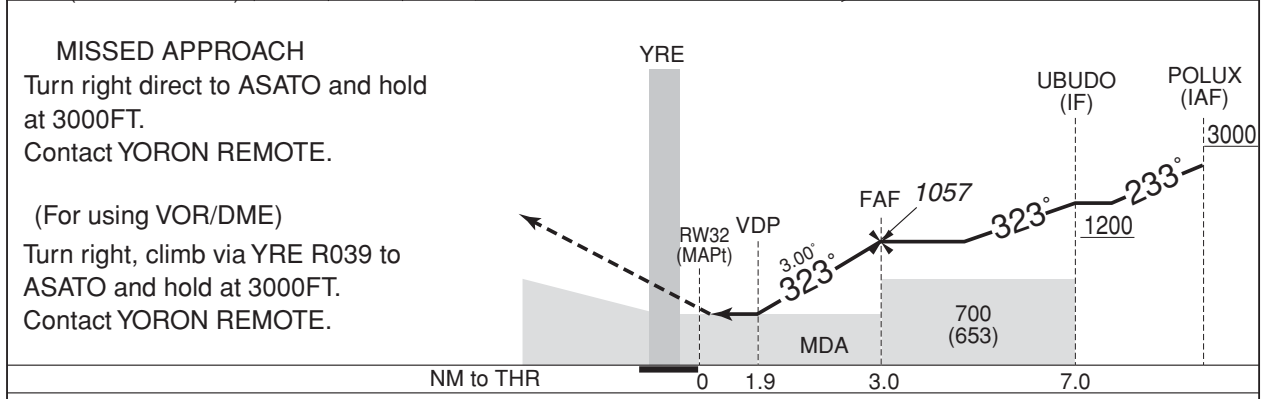
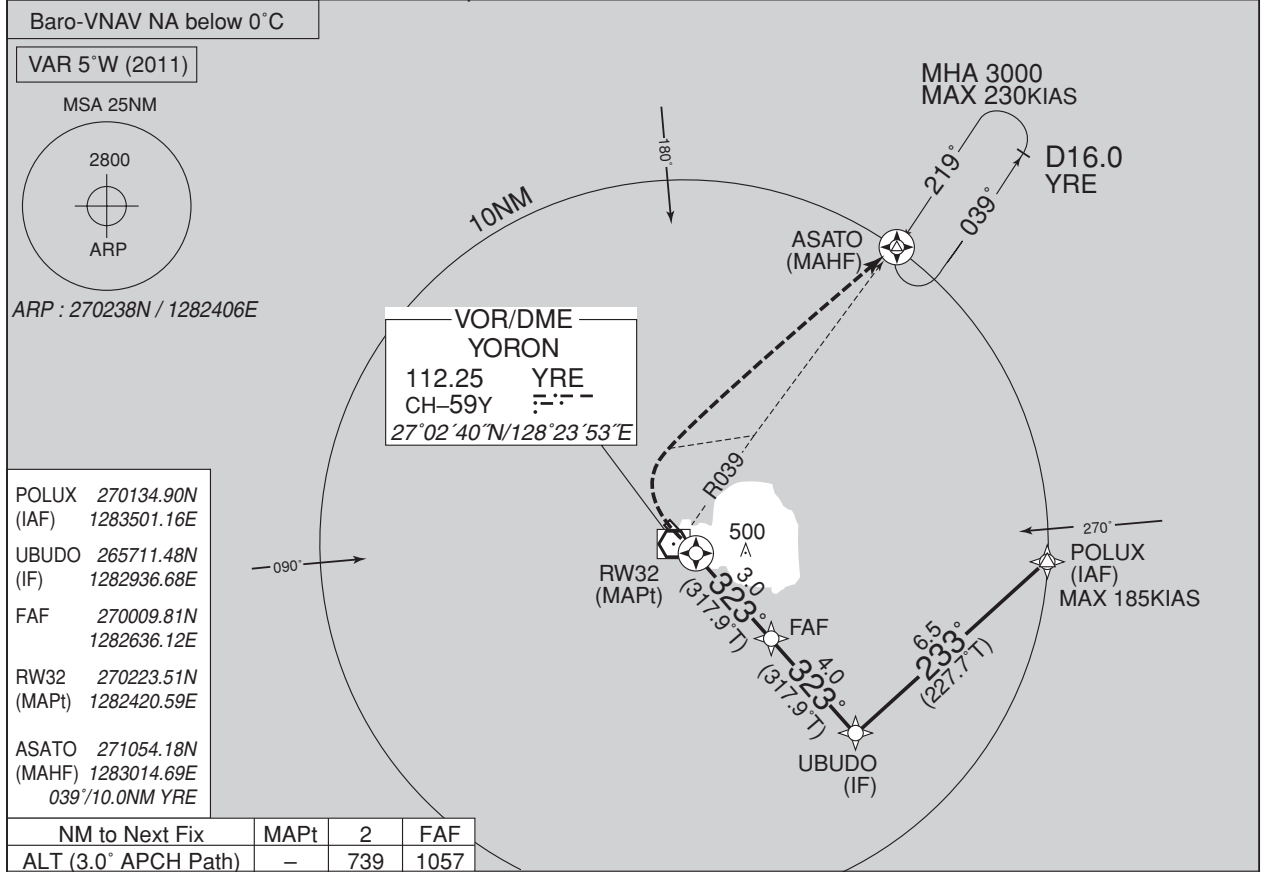
MINIMA with Missed APCH climb gradient of 2.5% are not established.  
Circling to WEST side of RWY only.

INSTRUMENT APPROACH CHART

RORY / YORON

RNAV(GNSS) RWY32

KOBE CONTROL 132.3 – 255.2	1. DME/DME RNP0.3 not authorized. 2. RNP0.3 required 3. GNSS required.	YORON REMOTE 118.3	NO RADAR
-------------------------------	--	-----------------------	----------



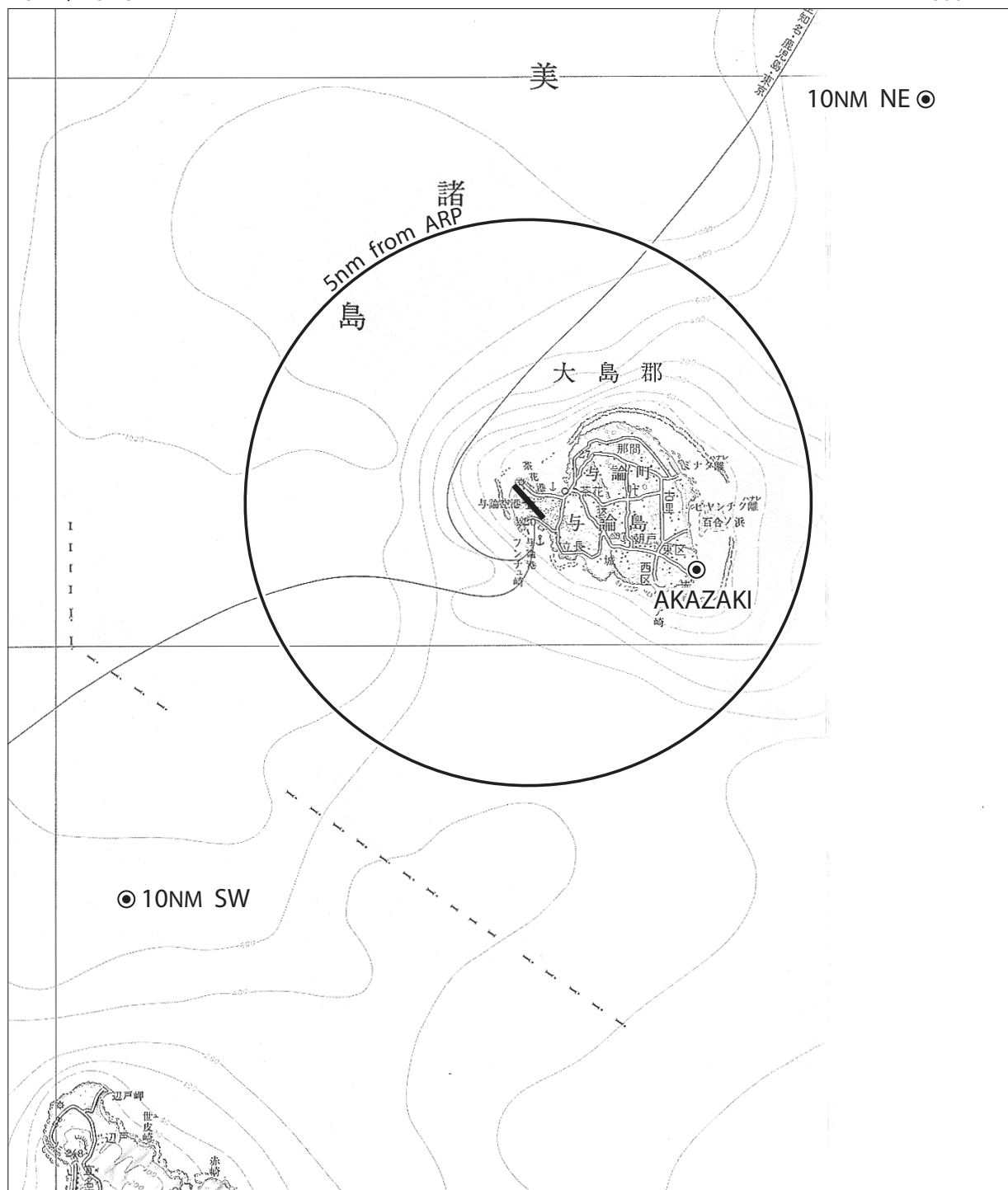
MINIMA		THR elev. 52	AD elev. 47			
CAT	LNAV/VNAV		LNAV		CIRCLING	
	DA(H)	CMV	MDA(H)	CMV	MDA(H)	VIS
A	670 (618)	1500	670 (623)	1500	670 (623)	1600
B					680 (633)	
C		2000		2000		2400
D	-	-	-	-	-	-

CHANGE : COM

Circling to WEST side of RWY only.

RORY / YORON

Visual REP



Call sign	BRG / DIST from ARP	Remarks
赤崎 Akazaki	116°/3.2NM	灯台 Lighthouse
10NM NE	045°/ 10NM	海上 Over the sea
10NM SW	225°/ 10NM	海上 Over the sea