

AD 2 AERODROMES

RJTF AD 2.1 AERODROME LOCATION INDICATOR AND NAME

RJTF - CHOFU

RJTF AD 2.2 AERODROME GEOGRAPHICAL AND ADMINISTRATIVE DATA

1	ARP coordinates and site at AD	354018N/1393141E 350° / 400m FM RWY35 THR
2	Direction and distance from (city)	1.2nm NW FM Chofu City
3	Elevation/ Reference temperature	139ft / -
4	Geoid undulation at AD ELEV PSN	-
5	MAG VAR/ Annual change	7°W / -
6	AD Administration, address, telephone, telefax, telex, AFS, e-mail and/or Web-site addresses	Tokyo Municipal Govt. 290-3, Nishi-machi Chofu-shi Tokyo, 182-0032 Japan Tel: 0422-34-4840 Fax: 0422-34-4842
7	Types of traffic permitted (IFR/VFR)	IFR/VFR
8	Remarks	Nil

RJTF AD 2.3 OPERATIONAL HOURS

1	AD Administration	1. 2330-0800 [2330SUN-0800SAT] EXC Public HOL, 2nd JAN, 3rd JAN 2. 0100-0800 on SUN, Public HOL, 2nd JAN, 3rd JAN 3. Flight for air transport services applies 2330-0900 [2330 31st MAR - 0900 31st AUG] regardless of item 1. and 2. 4. Flight for air transport services applies 2330-0800 [2330 31st AUG - 0800 31st MAR] regardless of item 1. and 2. Note: The sunset time is given to priority when it is earlier than the close of the operative time.
2	Customs and immigration	On request Customs: 042-522-6004 Immigration: 042-528-7179
3	Health and sanitation	Quarantine(human): On request(03-3599-1515) Quarantine(animal, plant): Nil
4	AIS Briefing Office	Nil
5	ATS Reporting Office(ARO)	Nil
6	MET Briefing Office	Nil
7	ATS	Chofu Flight Service 2330-0900 [2330 31st MAR - 0900 31st AUG] 2330-0800 [2330 31st AUG - 0800 31st MAR]
8	Fuelling	To be issued later
9	Handling	Ask AD Administration
10	Security	Ask AD Administration
11	De-icing	Nil
12	Remarks	Nil

RJTF AD 2.4 HANDLING SERVICES AND FACILITIES

1	Cargo-handling facilities	Nil
2	Fuel/ oil types	80/87 100/130
3	Fuelling facilities/ capacity	To be issued later
4	De-icing facilities	Nil
5	Hangar space for visiting aircraft	Nil
6	Repair facilities for visiting aircraft	Nil
7	Remarks	Nil

RJTF AD 2.5 PASSENGER FACILITIES

1	Hotels	Nil
2	Restaurants	Nil
3	Transportation	Buses and Taxi
4	Medical facilities	hospital in Chofu city
5	Bank and Post Office	Nil
6	Tourist Office	Nil
7	Remarks	Nil

RJTF AD 2.6 RESCUE AND FIRE FIGHTING SERVICES

1	AD category for fire fighting	CAT 3
2	Rescue equipment	Chemical fire fighting truck × 1
3	Capability for removal of disabled aircraft	Nil
4	Remarks	Nil

RJTF AD 2.7 SEASONAL AVAILABILITY-CLEARING

1	Types of clearing equipment	Nil
2	Clearance priorities	Nil
3	Remarks	Nil

RJTF AD 2.8 APRONS, TAXIWAYS AND CHECK LOCATIONS DATA

1	Apron surface and strength	AUW 5700kg, 0.28Mpa
2	Taxiway width, surface and strength	Width: 18m Strength: PCN 7/F/D/Y/T
3	ACL and elevation	Not available
4	VOR checkpoints	Nil
5	INS checkpoints	Spot NR 80: 354019.17N1393143.43E 81: 354019.55N1393144.97E 82: 354020.57N1393142.91E 83: 354020.95N1393144.45E 84: 354021.97N1393142.39E 85: 354022.35N1393143.94E
6	Remarks	Nil

RJTF AD 2.9 SURFACE MOVEMENT GUIDANCE AND CONTROL SYSTEM AND MARKINGS

1	Use of aircraft stand ID signs, TWY guide lines and Visual docking/ parking guidance system of aircraft stands	See AD2.24 AD chart
2	RWY and TWY markings and LGT	RWY: RWY17/35 (Marking) RWY designation, RWY CL, RWY THR, Aiming point, RWY middle point, RWY side stripe TWY: (Marking) TWY CL, TWY side stripe
3	Stop bars	Nil
4	Remarks	Nil

RJTF AD 2.10 AERODROME OBSTACLES

In Area2 See Obstacle data

Other obstacles

OBST ID/ designation	Obstacle type	Coordinates	Elevation	Marking/ LGT	Remarks
RJTF1	Flood LGT	353956.0N1393150.1E	177ft	-/LIL	
RJTF2	Building	353953.2N1393114.5E	284ft	-/LIL	
RJTF3	Building	354004.4N1393114.5E	282ft	-/LIL	
RJTF4	Fence	354028.4N1393129.0E	208ft	-/LIL	
RJTF5	Fence	354025.3N1393130.0E	207ft	-/LIL	
RJTF6	Flood LGT	353956.3N1393151.6E	182ft	-/LIL	
RJTF7	Stadium	353955.4N1393139.6E	246ft	-/LIL	
RJTF8	Solar panel	354016.0N1393117.0E	286ft	-/-	
RJTF9	Fence	354019.4N1393135.5E	185ft	-/-	
RJTF10	Building	354031.9N1393145.9E	184ft	-/LIL	

In Area3 To be developed

RJTF AD 2.11 METEOROLOGICAL INFORMATION PROVIDED

1	Associated MET Office	Tokyo Municipal Govt.
2	Hours of service MET Office outside hours	2330-0900 APR-AUG 2330-0800 SEP-MAR
3	Office responsible for TAF preparation Periods of validity	Nil
4	Trend forecast Interval of issuance	Nil
5	Briefing/ consultation provided	Nil
6	Flight documentation Language(s) used	C En
7	Charts and other information available for briefing or consultation	S ₆ ,U ₈₅ ,U ₇₀ ,U ₅₀ ,U ₃₀ ,U ₂₅ ,P _S ,P ₅₀ ,P ₃₀ ,P ₂₅ ,P _{SW} ,U ₂ /T,P,C,N
8	Supplementary equipment available for providing information	Nil
9	ATS units provided with information	Flight Service
10	Additional information(limitation of service, etc.)	Nil

RJTF AD 2.12 RUNWAY PHYSICAL CHARACTERISTICS

Designations RWY NR	TRUE BRG	Dimensions of RWY(M)	Strength(PCN) and surface of RWY	THR coordinates THR geoid undulation	THR elevation and highest elevation of TDZ of precision APP RWY
1	2	3	4	5	6
17	163.20°	800 × 30	PCN 7/F/D/Y/T Asphalt-concrete	354029.98N 1393135.94E	THR ELEV: 140ft
35	343.20°	800 × 30	PCN 7/F/D/Y/T Asphalt-concrete	354005.13N 1393145.13E	THR ELEV: 137ft
Slope of RWY	Strip Dimensions(M)	RESA(Overrun) Dimensions(M)	Remarks		
7	10	11	14		
See AD2.24 AD chart	920×60 920×60	90×60 90×60	RWY grooving: 800m × 20m		

RJTF AD 2.13 DECLARED DISTANCES

RWY Designator	TORA (m)	TODA (m)	ASDA (m)	LDA (m)	Remarks
1	2	3	4	5	6
17	800	800	800	800	Nil
35	800	800	800	800	Nil

RJTF AD 2.14 APPROACH AND RUNWAY LIGHTING

RWY Designator	APCH LGT type LEN INTST	RTHL Color WBAR	PAPI (VASIS) Angle		RTZL LEN	RCLL LEN Spacing Color INTST	REDL LEN Spacing Color INTST	RENL Color WBAR	STWL LEN Color
			DIST	THR					
1	2	3	4	5	6	7	8	9	
17			PAPI 4.0°/LEFT 76m 18ft						
35			PAPI 3.0°/LEFT 98m 18ft						
Remarks									
10									
RWY THR ID LGT for RWY 17/35 THR(Color:white)									

RJTF AD 2.15 OTHER LIGHTING, SECONDARY POWER SUPPLY

1	ABN/IBN location, characteristics and hours of operation	Nil
2	LDI location and LGT Anemometer location and LGT	Nil
3	TWY edge and center line lighting	Nil
4	Secondary power supply/ switch-over time	Within 15 sec: PAPI, RWY THR ID LGT
5	Remarks	Nil

RJTF AD 2.16 HELICOPTER LANDING AREA

Nil

RJTF AD 2.17 ATS AIRSPACE

Designation and lateral limits	Vertical limits (ft)	Airspace classification	ATS unit call sign Language	Remarks
1	2	3	4	6
Nil				

RJTF AD 2.18 ATS COMMUNICATION FACILITIES

Service designation	Call sign	Frequency	Hours of operation	Remarks
1	2	3	4	5
A/G	Chofu Flight Service	130.8MHz	2330-0900 [2330 31st MAR - 0900 31st AUG] 2330-0800 [2330 31st AUG - 0800 31st MAR]	Nil

RJTF AD 2.19 RADIO NAVIGATION AND LANDING AIDS

Type of aid (VOR declination)	ID	Frequency	Hours of operation	Position of transmitting antenna coordinates	Elevation of DME transmitting antenna	Remarks
1	2	3	4	5	6	7
MSAS		1575.42Hz	H24			Transmitting antennas are satellite based

RJTF AD 2.20 LOCAL TRAFFIC REGULATIONS

1. Airport regulations

Nil

2. Taxiing to and from stands

Nil

3. Parking area for small aircraft(General aviation)

Nil

4. Parking area for helicopters

Nil

5. Apron - taxiing during winter conditions

Nil

6. Taxiing - limitations

Nil

7. School and training flights - technical test flights - use of runways

Nil

8. Helicopter traffic - limitation

Nil

9. Removal of disabled aircraft from runways

Nil

RJTF AD 2.21 NOISE ABATEMENT PROCEDURES

Nil

RJTF AD 2.22 FLIGHT PROCEDURES

1. TAKE OFF MINIMA

	RWY	ACFT CAT	REDL & RCLL		REDL or RCLL or RCL Marking		NIL (DAYTIME ONLY)	
			RVR	VIS	RVR	VIS	RVR	VIS
Multi-Engine ACFT with TKOF ALTN AP FILED	17	A,B	-	-	-	400m	-	500m
	35							
OTHER	17	A,B	AVBL LDG MINIMA					
	35							

2. Lost communication procedures for arrival aircraft under radar navigational guidance

If radio communications with Yokota Approach are lost for 30 seconds, squawk Mode A/3 Code 7600 and;

- (I) 1. Attempt to contact Yokota approach on all frequencies.
- 2. If unable, proceed in accordance with visual flight rules.
- 3. If unable, proceed to KOSKA at last assigned altitude or 3,000 feet whichever is higher, and execute instrument approach.
- (II) Procedures other than above will be issued when situation required.

3. 計器飛行方式の運用方法**3.1 取扱対象機**

調布飛行場における IFR 運航は新中央航空の定期運送路線機に限られる。

3.2 出発機

1) 管制承認は、131.4MHz で横田クリアランスに要求し、以後は管制機関の指示に従うこと。(管制機関は調布フライトサービスへの周波数の切り替えを指示しない。)

2) 離陸に係る飛行場情報の提供は、調布フライトサービス (130.8MHz) により行われる。

3) 離陸時刻を横田進入管制所に通報すること。

3.3 到着機

1) 横田アプローチの周波数を常時聴取し、その指示に従うこと。(管制機関は調布フライトサービスへの周波数の切り替えを指示しない。)

2) 着陸に係る飛行場情報の提供は、調布フライトサービス (130.8MHz) により行われる。

3) 着陸時刻を横田進入管制所に通報すること。

3.4 無線通信機

調布飛行場において計器飛行方式により飛行する航空機は、常時 2 局以上と交信可能な無線機器の搭載が必要である。

3. IFR operational procedures**3.1 Handling aircraft**

IFR flight in Chofu aerodrome is limited to scheduled aircraft of New Central Airservice.

3.2 Departure

1) Pilot shall request ATC clearance on 131.4MHz to Yokota Clearance, thereafter, follow the instructions from ATC. (ATC does not instruct to change to Chofu Flight Service frequency.)

2) Chofu Flight Service provides the aerodrome information on 130.8MHz.

3) Pilot shall report the airborne time to Yokota APP.

3.3 Arrival

1) Pilot shall monitor Yokota APP frequency at all times. (ATC does not instruct to change to Chofu Flight Service frequency.)

2) Chofu Flight Service provides the aerodrome information on 130.8MHz.

3) Pilot shall report the landing time to Yokota APP.

3.4 Radio communication equipment

Aircraft intended to fly in accordance with IFR at Chofu aerodrome shall be equipped with two sets or more of radio communication equipment.

4. 有視界飛行方式の運用方法

飛行場に離着陸しようとする航空機は、原則として次に掲げる方法により運航すること。

(固定翼機)

a) 着陸機は、目視位置通報点において位置の通報を行い、場周経路に進入する。

b) 場周経路は、高度は 1,000 フィートで飛行する。

c) 滑走路 35 からの離陸機は、安全な高度に達した後、西武多摩川線と東八道路の交点から JR 中央本線の間で左右に変針する。

滑走路 17 からの離陸機は、安全な高度に達した後、中央自動車道から多摩川の間で左右に変針する。

(回転翼機)

a) 着陸機は、飛行場の 3 海里東又は 3 海里西において位置の通報を行い、着陸地点に向かうこと。神代植物公園上空の飛行高度は 1,200 フィート、東京競馬場上空は 2,000 フィートとする。

b) 離着陸地点は、滑走路中央標識付近とする。

c) 離陸機は、離陸地点から東方向 (神代植物公園) 又は西方向 (東京競馬場) に向かう。

4. VFR operational procedures

The all aircraft taking-off or landings at CHOFU aerodrome are primarily requested to fly as follows.

(FIXED AIRCRAFT)

a) Contact "CHOFU Flight Service" over the Visual Reporting Points and obtain necessary information for landing, then, commence approach to traffic pattern.

b) Traffic pattern altitude is 1,000ft.

c) When RWY35 is in use, departure aircraft are requested to turn between "point of intersection of SEIBU TAMAGAWA Line and TOHACHI Road" and "JR CHUO Line" after reaching safe altitude.

When RWY17 is in use, departure aircraft are requested to turn between CHUO Highway and TAMA River after reaching safe altitude.

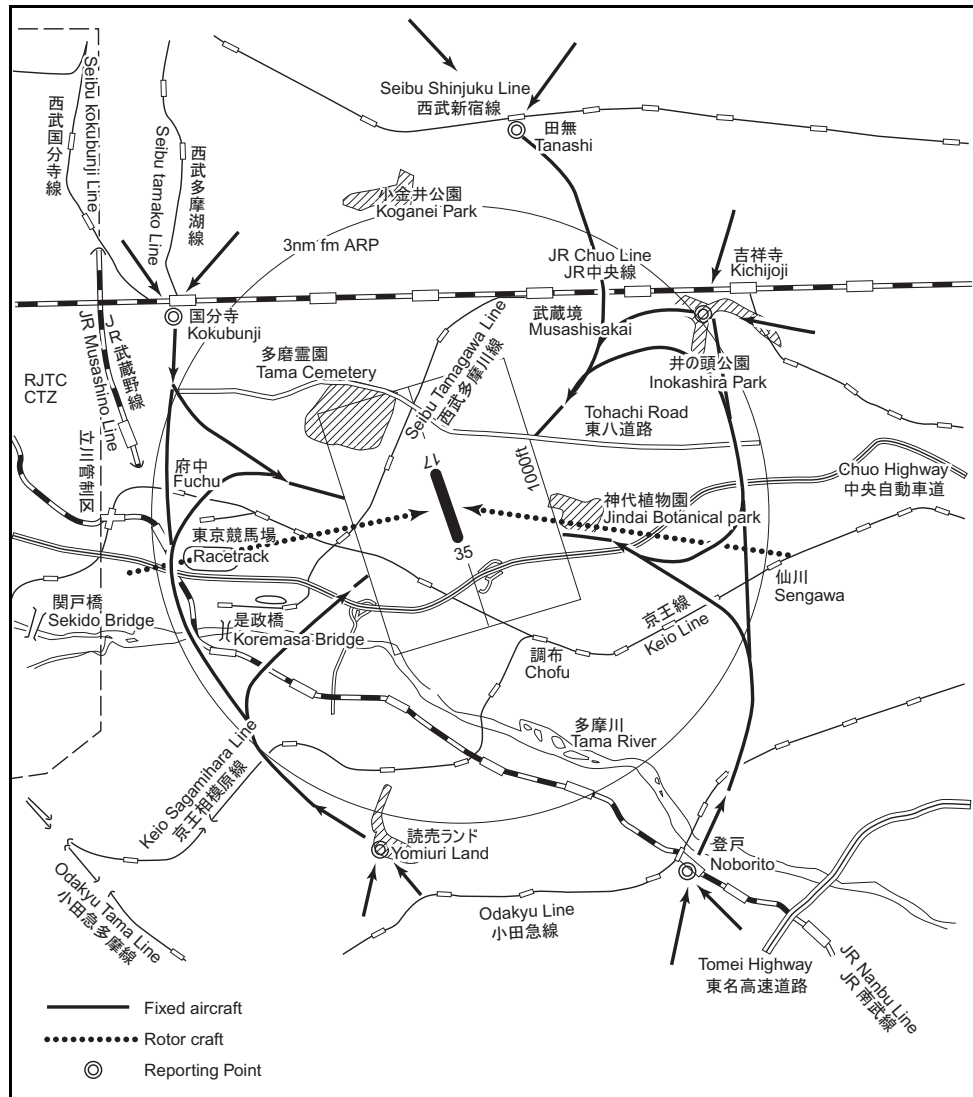
(ROTOR CRAFT)

a) Contact "CHOFU Flight Service" at 3NM east or 3NM west of ARP and obtain necessary information for landing, then, commence approach via JINDAI Botanical Park or Tokyo Racetrack direct to the landing area. Cross JINDAI Botanical Park at 1,200 feet and Tokyo Racetrack at 2,000 feet.

b) The taking-off and landing area is near the runway center marker.

c) Departure aircraft are requested to fly direct to the east (JINDAI Botanical Park) or to the west (TOKYO Racetrack) after take-off.

Traffic pattern and standard approach routes
場周経路及び場周経路への標準進入経路



RJTF AD 2.23 ADDITIONAL INFORMATION

調布飛行場周辺空域を飛行する際の留意事項について
 調布飛行場周辺上空を人間飛行場への IFR 到着機が 2500 フィート以上で飛行することから、航空交通の安全を図るため、調布飛行場を利用する VFR 機は横田 VFR アドバイザーサービスを積極的に活用すること。
 特に全ての出発機は2000フィート以下において横田VFR アドバイザーサービスにコンタクトし、周辺交通の安全を確認した上でその後の上昇を行うこと。
 (RJTY AD2.22 FLIGHT PROCEDURES を参照)

Local flying restrictions:

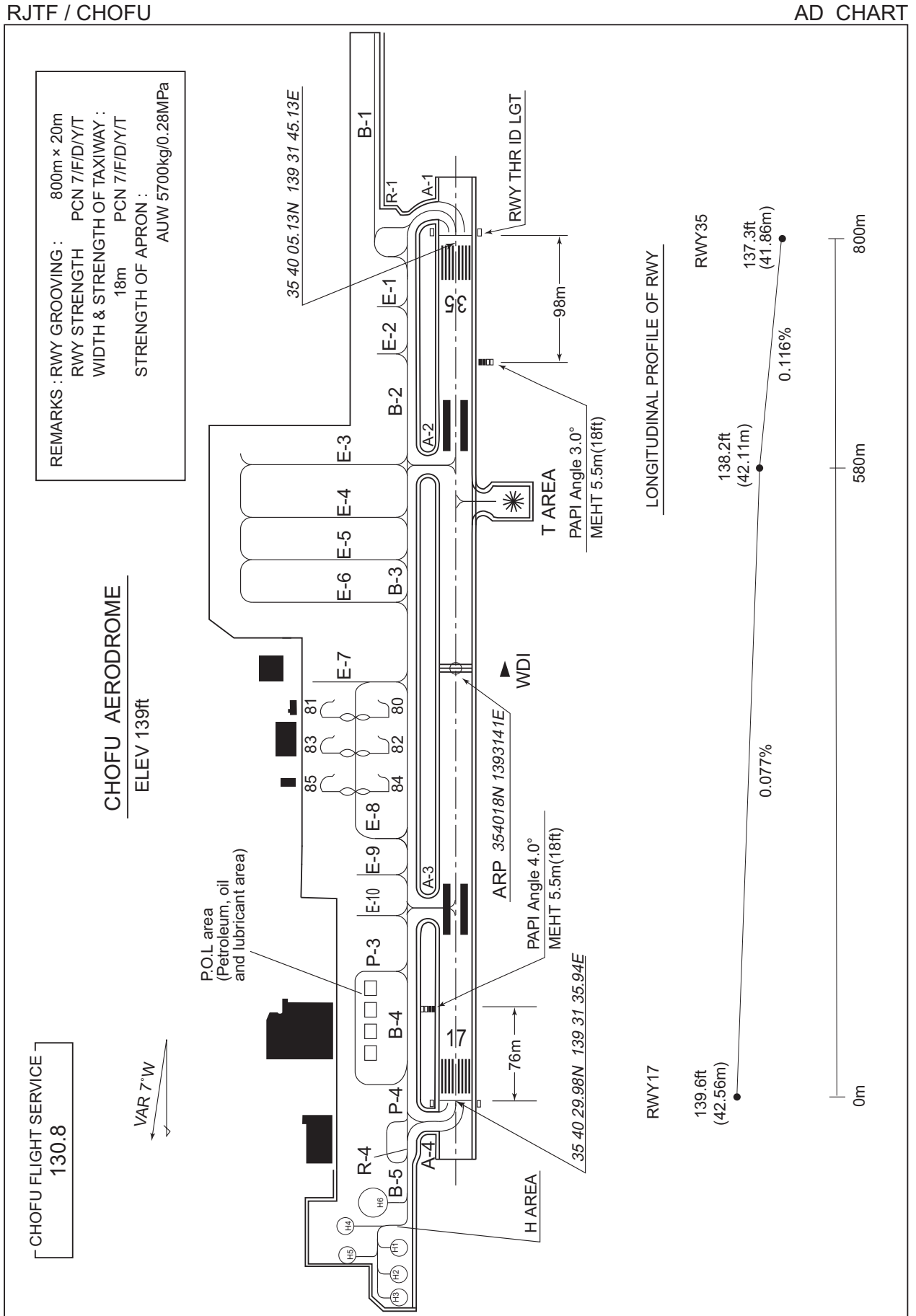
Due to IFR flight arriving at Iruma aerodrome flying over around Chofu aerodrome at or above 2500FT, VFR aircraft using Chofu airport should contact Yokota VFR radar advisory service positively, and all departure aircraft from Chofu shall contact Yokota VFR radar advisory service to confirm safety of the air traffic at or below 2000 feet prior to higher altitude.
 (See RJTY AD2.22 FLIGHT PROCEDURES)

RJTF AD 2.24 CHARTS RELATED TO AN AERODROME

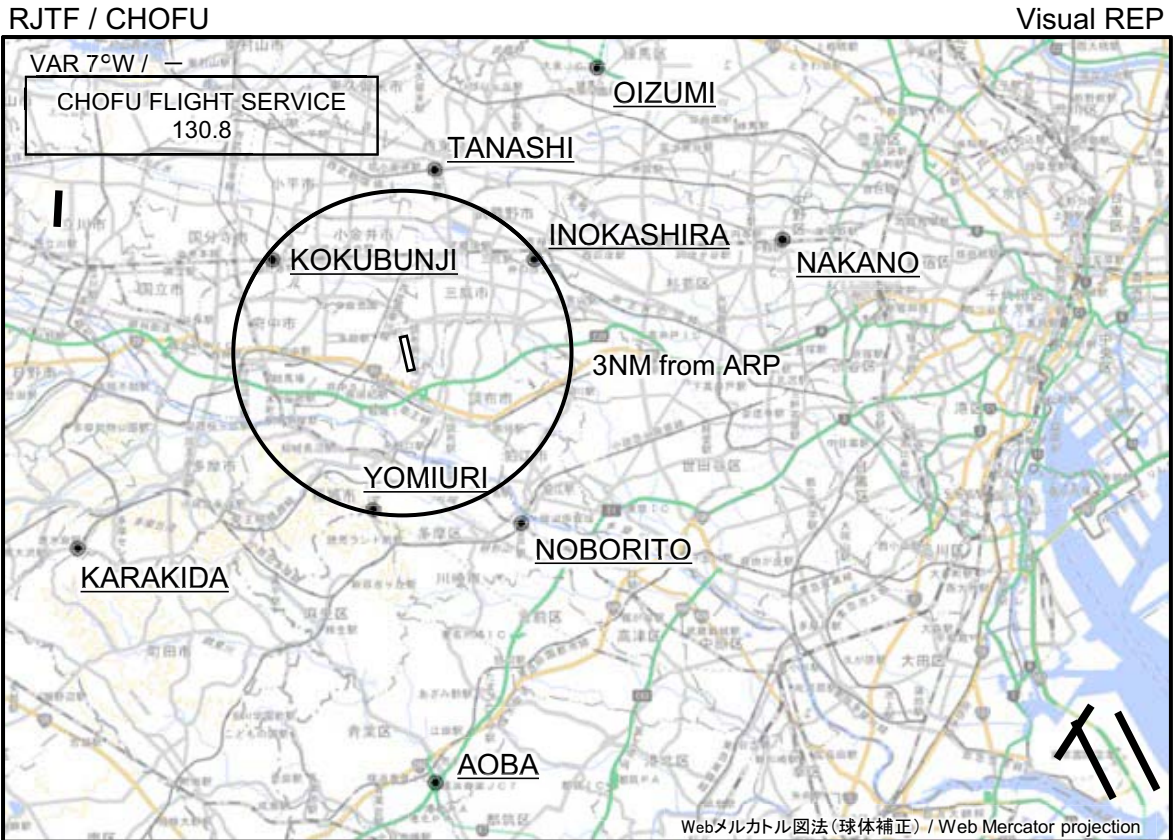
- Aerodrome/Heliport Chart
- Standard Departure Chart - Instrument
- Instrument Approach Chart
- Other Chart (VISUAL REP)

INTENTIONALLY LEFT BLANK

CHANGE : TWY A1,A4,R1,R4 relocated. Spot H1-H6 added. Overrun area marking erased. Longitudinal profile of RWY.



INTENTIONALLY LEFT BLANK



※図中に標高を示す数字がある場合、単位はメートル(m)である。The unit of measurement used to express elevation is meter(m).

Call sign	BRG / DIST from ARP	Remarks
大泉 Oizumi	034°T / 6.2NM	外環自動車道大泉インターチェンジ Interchange
田無 Tanashi	009°T / 3.4NM	西武新宿線田無駅 Station
中野 Nakano	073°T / 7.0NM	中央線中野駅 Station
国分寺 Kokubunji	306°T / 2.9NM	中央線国分寺駅 Station
井の頭 Inokashira	054°T / 2.9NM	井の頭公園池 Pond
よみうり Yomiuri	189°T / 2.9NM	よみうりランド観覧車 Ferris wheel
登戸 Noborito	146°T / 3.7NM	南武線登戸駅 Station
唐木田 Karakida	239°T / 6.8NM	小田急電鉄多摩線唐木田操車場 Rail yard
青葉 Aoba	176°T / 7.7NM	東名高速道路青葉インターチェンジ Interchange

CHANGE: Map updated. BRG/DIST from ARP. Inokashira, Yomiuri. ATTENTION.

注 意 : 調布飛行場に進入しようとする航空機は、5NM以遠の目視位置通報点において位置通報を行い、調布飛行場の対空通信局から運航に必要な情報の提供を受けること。
対空通信局の呼出符号及び周波数 : 調布フライト・サービス、130.8MHz

ATTENTION : The aircraft approaching to Chofu Aerodrome shall report PPSN to A/G communication station of Chofu Aerodrome at Visual REP 5NM or more from the aerodrome and receive necessary information for flight.
Call sign and frequency of A/G : Chofu Flight Service, 130.8MHz

INTENTIONALLY LEFT BLANK

STANDARD DEPARTURE CHART -INSTRUMENT

RJTF / CHOFU

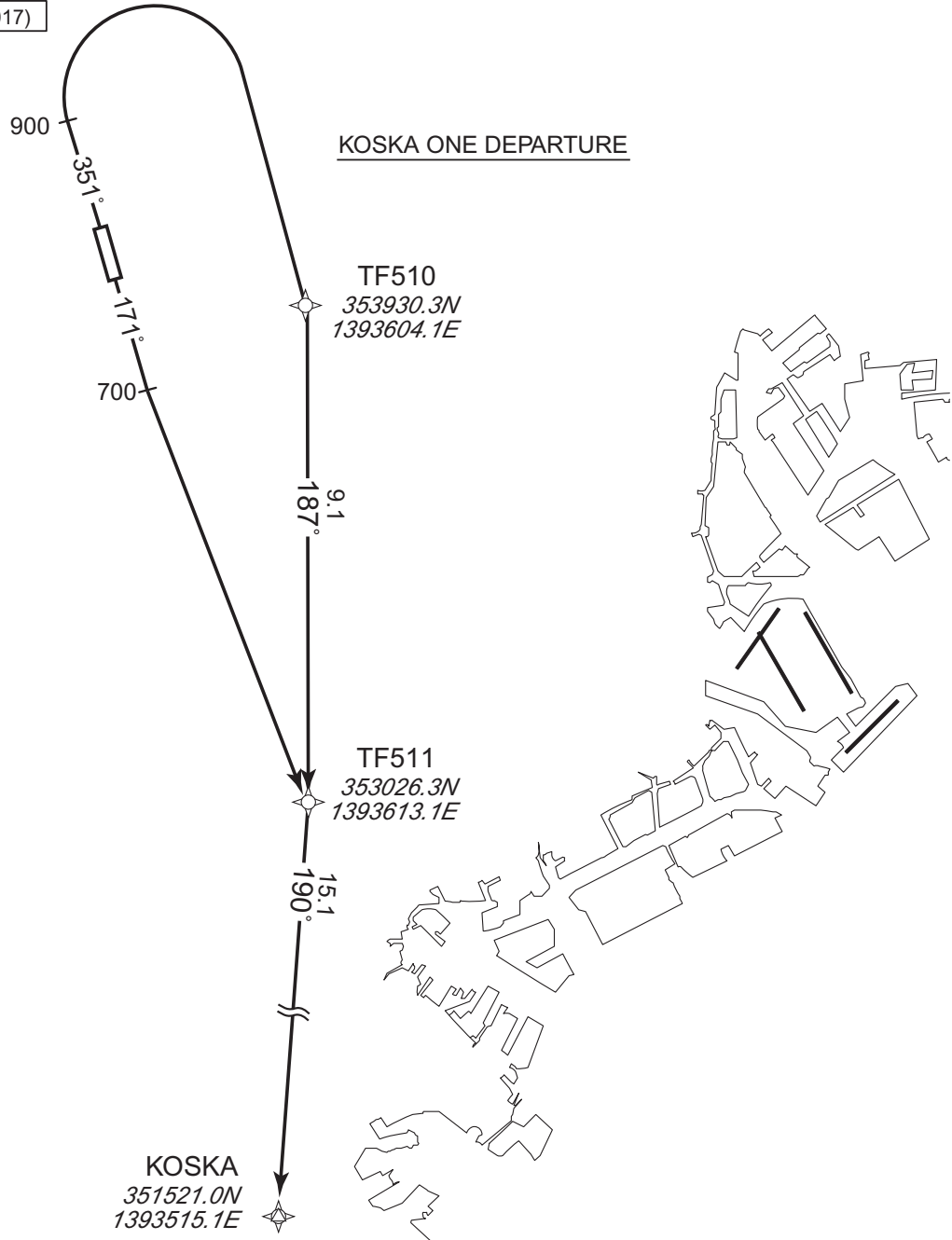
RNAV SID

KOSKA ONE DEPARTURE

Basic RNP1

Note GNSS required.

VAR 7°W (2017)



KOSKA ONE DEPARTURE

RWY17 : Climb on HDG171° at or above 700FT, direct to TF511, to KOSKA.
 RWY35 : Climb on HDG351° at or above 900FT, turn right direct to TF510, to TF511, to KOSKA.

Note RWY17 : 4.0% climb gradient required up to 700FT.
 OBST ALT 181FT located at 0.2NM 162° FM end of RWY17.
 RWY35 : 5.0% climb gradient required up to 1100FT.
 OBST ALT 543FT located at 1.8NM 334° FM end of RWY35.
 OBST ALT 858FT located at 3.6NM 005° FM end of RWY35.

STANDARD DEPARTURE CHART -INSTRUMENT

RJTF / CHOFU

RNAV SID

KOSKA ONE DEPARTURE

RWY17

Serial Number	Path Descriptor	Waypoint Identifier	Fly Over	Course °M(°T)	Magnetic Variation	Distance (NM)	Turn Direction	Altitude (FT)	Speed (KIAS)	Vertical Angle	Navigation Specification
001	VA	—	—	171 (163.3)	-7.5	—	—	+700	—	—	Basic RNP1
002	DF	TF511	—	—	-7.5	—	—	—	—	—	Basic RNP1
003	TF	KOSKA	—	190 (183.0)	-7.5	15.1	—	—	—	—	Basic RNP1

RWY35

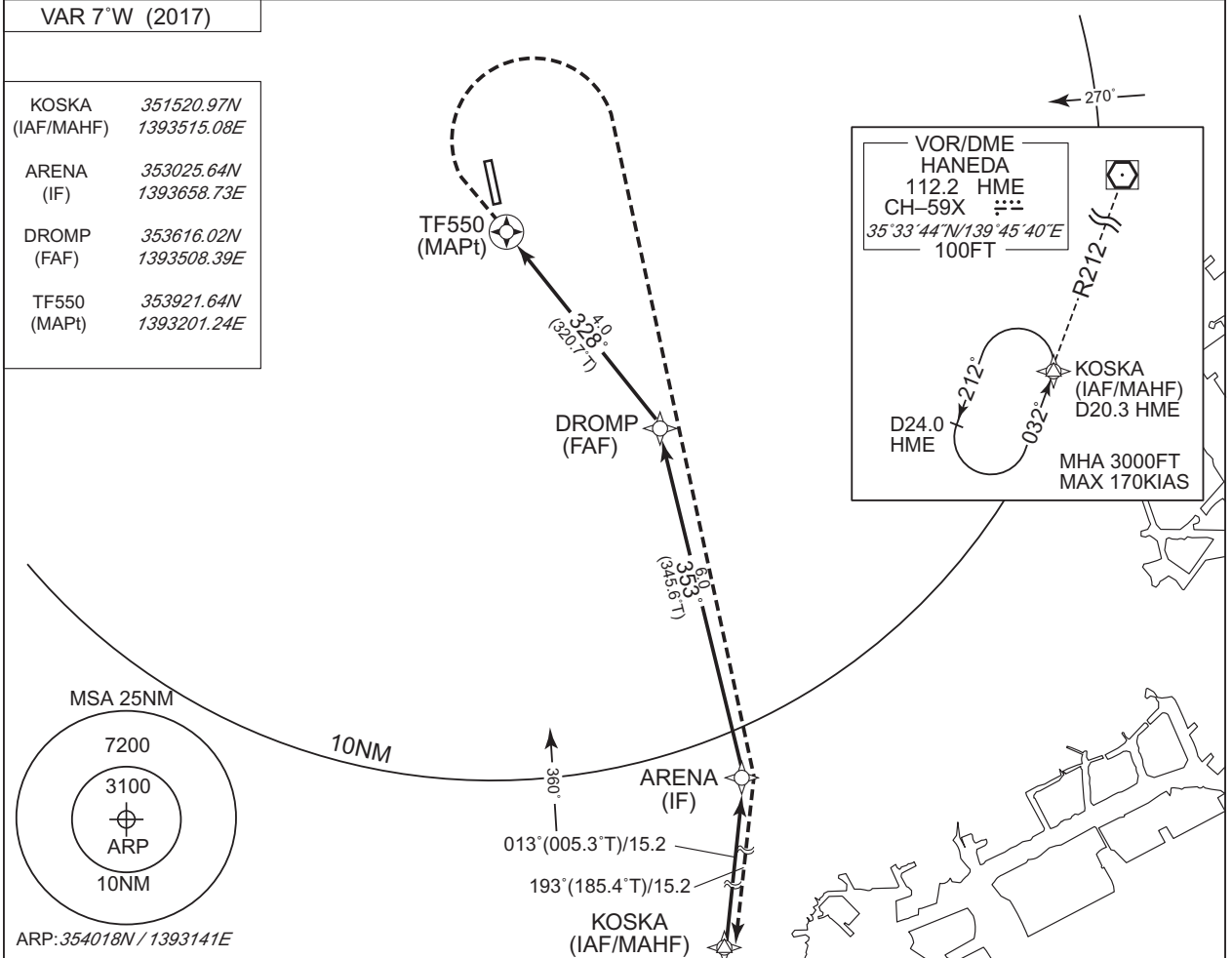
Serial Number	Path Descriptor	Waypoint Identifier	Fly Over	Course °M(°T)	Magnetic Variation	Distance (NM)	Turn Direction	Altitude (FT)	Speed (KIAS)	Vertical Angle	Navigation Specification
001	VA	—	—	351 (343.3)	-7.5	—	—	+900	—	—	Basic RNP1
002	DF	TF510	—	—	-7.5	—	R	—	—	—	Basic RNP1
003	TF	TF511	—	187 (179.2)	-7.5	9.1	—	—	—	—	Basic RNP1
004	TF	KOSKA	—	190 (183.0)	-7.5	15.1	—	—	—	—	Basic RNP1

INSTRUMENT APPROACH CHART

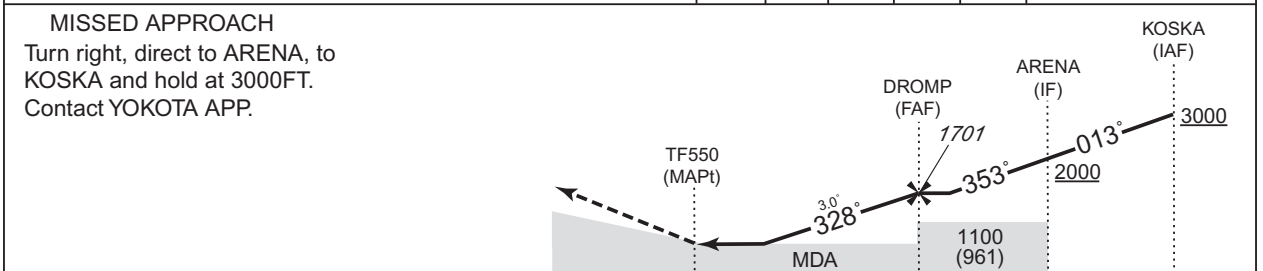
RJTF / CHOFU

RNAV(GNSS) RWY35

YOKOTA APP 118.3 – 270.6	1.DME/DME RNP0.3 not authorized. 2.RNP0.3 required. 3.GNSS required. For E/TSO-C129() sensor, contingency means required, such as IRU.	—	NO RADAR
-----------------------------	---	---	----------



	MAPt	1	2	3	FAF	NM to Next Fix
	—	746	1064	1383	1701	ALT (3.0° APCH Path)



Missed APCH climb gradient MNM 3.0%

CAT	LNAV/VNAV		LNAV		CIRCLING	
	DA(H)	CMV	MDA(H)	CMV	MDA(H)	VIS
A			670 (531)	1500	690 (551)	1600
B					720 (581)	
C	—	—	—	—	—	—
D						

MINIMA with Missed APCH climb gradient of 2.5% are not established.
 Circling to EAST side of RWY only.

INTENTIONALLY LEFT BLANK

場周経路及び場周経路への標準進入経路 Traffic pattern and standard approach routes

