

## AD 2 AERODROMES

## RJNF AD 2.1 AERODROME LOCATION INDICATOR AND NAME

## RJNF - FUKUI

## RJNF AD 2.2 AERODROME GEOGRAPHICAL AND ADMINISTRATIVE DATA

1	ARP coordinates and site at AD	360834N/1361326E 175°/0.6km FM RWY 18 THR
2	Direction and distance from (city)	5nm N FM Fukui station
3	Elevation/ Reference temperature	18ft / 33°C(2003-2008)
4	Geoid undulation at AD ELEV PSN	Nil
5	MAG VAR/ Annual change	7°W / -
6	AD Administration, address, telephone, telefax, telex, AFS, e-mail and/or Web-site addresses	FUKUI PREF. PUBLIC AP. 50-1-2, Edomenaka, Harue-cho, Sakai-city, Fukui,919-0412, JAPAN Tel: 0776-51-0580,0776-51-4066 Fax: 0776-51-4102 e-mail: kuukou@pref.fukui.lg.jp Web: http://www.pref.fukui.lg.jp/doc/fukui-airport/
7	Types of traffic permitted(IFR/VFR)	IFR/VFR
8	Remarks	Nil

## RJNF AD 2.3 OPERATIONAL HOURS

1	AD Administration	0000 - 0800
2	Customs and immigration	On request Customs: 0776-22-1832 Immigration: 0776-28-2101
3	Health and sanitation	Quarantine(human): On request(06-6571-4312) Quarantine(animal, plant): Nil
4	AIS Briefing Office	Nil
5	ATS Reporting Office(ARO)	Nil
6	MET Briefing Office	H24 (TOKYO)
7	ATS	0000 - 0800 Airport Remote Mobile Communication Service Provided by Chubu FSC
8	Fuelling	0000 - 0800(On request, Tel: 0776-51-6640)
9	Handling	Nil
10	Security	Nil
11	De-icing	Nil
12	Remarks	Nil

**RJNF AD 2.4 HANDLING SERVICES AND FACILITIES**

1	Cargo-handling facilities	Nil
2	Fuel/ oil types	JET A-1, AVGAS 100
3	Fuelling facilities/ capacity	Fuel truck
4	De-icing facilities	Nil
5	Hangar space for visiting aircraft	Nil
6	Repair facilities for visiting aircraft	Nil
7	Remarks	The prior permission of Oil company is required 0776-51-6640 : Mizukami trading company

**RJNF AD 2.5 PASSENGER FACILITIES**

1	Hotels	Nil
2	Restaurants	Nil
3	Transportation	Buses, Taxi
4	Medical facilities	Hospital in Harue-cho 3km
5	Bank and Post Office	Nil
6	Tourist Office	Nil
7	Remarks	Nil

**RJNF AD 2.6 RESCUE AND FIRE FIGHTING SERVICES**

1	AD category for fire fighting	CAT 3
2	Rescue equipment	AVBL : Ambulance car and chemical fire engines
3	Capability for removal of disabled aircraft	Nil
4	Remarks	Nil

**RJNF AD 2.7 SEASONAL AVAILABILITY-CLEARING**

1	Types of clearing equipment	Snow removing truck x 2, Tire dozer x 2 Snow remover rotary x 1
2	Clearance priorities	1.RWY 2.TWY 3.Apron
3	Remarks	Snow removal will be commenced, if RWY, TWY and Apron are covered with a depth of 5cm snow or more.

**RJNF AD 2.8 APRONS, TAXIWAYS AND CHECK LOCATIONS DATA**

1	Apron surface and strength	Surface : asphalt-concrete Strength : Spot 1-3, 5-7 : PCN 14/F/C/Y/T Spot 8-12 : AUW 4300kg/0.3MPa
2	Taxiway width, surface and strength	WIDTH : 15.0m Surface : asphalt-concrete Strength: PCN 14/F/C/Y/T
3	ACL and elevation	Not Available
4	VOR checkpoints	Not Available
5	INS checkpoints	Not Available
6	Remarks	Nil

**RJNF AD 2.9 SURFACE MOVEMENT GUIDANCE AND CONTROL SYSTEM AND MARKINGS**

1	Use of aircraft stand ID signs, TWY guide lines and Visual docking/ parking guidance system of aircraft stands	Nil
2	RWY and TWY markings and LGT	RWY:18/36 (Marking) RWY designation, RWY CL, RWY THR, Middle point, Aiming point, TDZ, RWY side stripe marking TWY: (Marking) TWY CL, TWY side stripe marking
3	Stop bars	Nil
4	Remarks	Nil

**RJNF AD 2.10 AERODROME OBSTACLES**

In Area2 See Obstacle data

In Area3 To be developed

## RJNF AD 2.11 METEOROLOGICAL INFORMATION PROVIDED

1	Associated MET Office	TOKYO
2	Hours of service MET Office outside hours	H24(TOKYO)
3	Office responsible for TAF preparation Periods of validity	Nil
4	Trend forecast Interval of issuance	Nil
5	Briefing/ consultation provided	Briefing is available upon inquiry at TOKYO
6	Flight documentation Language(s) used	C En
7	Charts and other information available for briefing or consultation	S <sub>6</sub> , U <sub>85</sub> , U <sub>7</sub> , U <sub>5</sub> , U <sub>3</sub> , U <sub>25</sub> , U <sub>2</sub> /T <sub>r</sub> , P <sub>s</sub> , P <sub>5</sub> , P <sub>3</sub> , P <sub>25</sub> , P <sub>SWE</sub> , P <sub>SWF</sub> , P <sub>SWG</sub> , P <sub>SWI</sub> , P <sub>SWM</sub> , P <sub>SW</sub> (domestic), E, C, W <sub>E</sub> , W <sub>F</sub> , W <sub>G</sub> , W <sub>I</sub> , W, N
8	Supplementary equipment available for providing information	Nil
9	ATS units provided with information	REMOTE
10	Additional information(limitation of service, etc.)	Nil

## RJNF AD 2.12 RUNWAY PHYSICAL CHARACTERISTICS

Designations RWY NR	TRUE BRG	Dimensions of RWY(M)	Strength(PCN) and surface of RWY	THR coordinates THR geoid undulation	THR elevation and highest elevation of TDZ of precision APP RWY
1	2	3	4	5	6
18	175.75°	1200×30	PCN 14/F/C/Y/T Asphalt Concrete	360853.67N 1361324.41E	THR ELEV: 17ft
36	355.75°	1200×30	PCN 14/F/C/Y/T Asphalt Concrete	360814.84N 1361327.84E	THR ELEV: 19ft
Slope of RWY	Strip Dimensions(M)	RESA (Overrun) Dimensions(M)	Remarks		
7	10	11	14		
See AD 2.24 AD chart	1320×120	45 × 120	RWY grooving 1200m x 20m		
	1320×120	45 × 120			

**RJNF AD 2.13 DECLARED DISTANCES**

RWY Designator	TORA (m)	TODA (m)	ASDA (m)	LDA (m)	Remarks
1	2	3	4	5	6
18	1200	1200	1200	1200	Nil
36	1200	1200	1200	1200	Nil

**RJNF AD 2.14 APPROACH AND RUNWAY LIGHTING**

RWY Designator	APCH LGT type LEN INTST	RTHL Color WBAR	PAPI (VASIS) Angle DIST FM THR MEHT	RTZL LEN	RCLL LEN Spacing Color INTST	REDL LEN Spacing Color INTST	RENL Color WBAR	STWL LEN Color
1	2	3	4	5	6	7	8	9
18	Nil	Nil	PAPI 3.0°/LEFT 266m 45ft	Nil	Nil	Nil	Nil	Nil
36	Nil	Nil	PAPI 3.0°/LEFT 266m 45ft	Nil	Nil	Nil	Nil	Nil
Remarks								
10								
RWY THR ID LGT for RWY 18/36 THR(Color:White)								

**RJNF AD 2.15 OTHER LIGHTING, SECONDARY POWER SUPPLY**

1	ABN/IBN location, characteristics and hours of operation	Nil
2	LDI location and LGT Anemometer location and LGT	Anemometer : RWY 36 : 400m FM RWY 36 THR, LGTD
3	TWY edge and center line lighting	Nil
4	Secondary power supply/ switch-over time	Within 10 seconds: PAPI, RWY THR ID LGT
5	Remarks	Nil

**RJNF AD 2.16 HELICOPTER LANDING AREA**

Nil
-----

## RJNF AD 2.17 ATS AIRSPACE

Designation and lateral limits		Vertical limits (ft)	Airspace classification	ATS unit call sign Language	Remarks
1		2	3	4	6
Fukui Information Zone	Area within a radius of 5nm (9km) of FUKUI ARP(36°09'N/136°13'E).	3,000 or below	E	FUKUI REMOTE En	

## RJNF AD 2.18 ATS COMMUNICATION FACILITIES

Service designation	Call sign	Frequency	Hours of operation	Remarks
1	2	3	4	5
A/G	FUKUI REMOTE	118.6MHz	0000 - 0800	Remote air-ground facility controlled by Chubu FSC. APP SER is provided by Komatsu APP.

## RJNF AD 2.19 RADIO NAVIGATION AND LANDING AIDS

Type of aid	ID	Frequency	Hours of operation	Position of transmitting antenna coordinates	Elevation of DME transmitting antenna	Remarks
1	2	3	4	5	6	7
MSAS		1575.42MHz	H24			Transmitting antennas are satellite based

---

**RJNF AD 2.20 LOCAL TRAFFIC REGULATIONS**

1. Airport regulations

For the use of this AP : PPR Tel 0776-51-0580

2. Taxiing to and from stands

Nil

3. Parking area for small aircraft(General aviation)

Nil

4. Parking area for helicopters

Nil

5. Apron - taxiing during winter conditions

Nil

6. Taxiing - limitations

Nil

7. School and training flights - technical test flights - use of runways

Nil

8. Helicopter traffic - limitation

Nil

9. Removal of disabled aircraft from runways

Nil

**RJNF AD 2.21 NOISE ABATEMENT PROCEDURES**

Nil

**RJNF AD 2.22 FLIGHT PROCEDURES**

**TAKE OFF MINIMA**

	RWY	ACFT CAT	REDL & RCLL		REDL or RCLL or RCL marking		NIL (DAYTIME ONLY)	
			RVR	VIS	RVR	VIS	RVR	VIS
Multi-Engine ACFT with TKOF ALTN AP Filed	18 36	A,B	-	-	-	400	-	500
OTHER	18 36	A,B	AVBL LDG MINIMA					

**RJNF AD 2.23 ADDITIONAL INFORMATION**

Nil

**RJNF AD 2.24 CHARTS RELATED TO AN AERODROME**

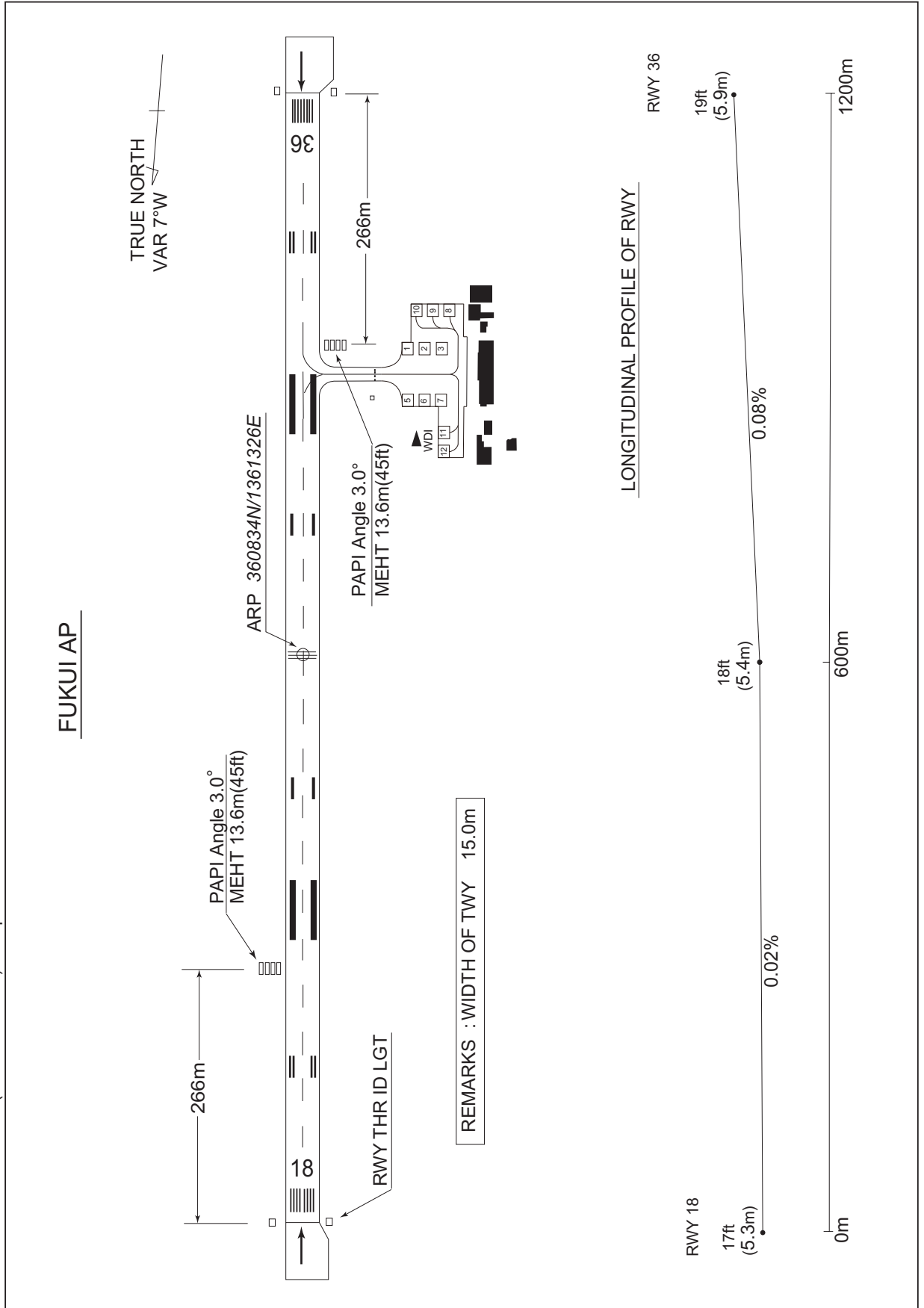
Aerodrome/Heliport Chart  
Standard Departure Chart - Instrument (AWARA-RNAV)  
Instrument Approach Chart (RNAV(GNSS) RWY18)  
Other Chart (Visual REP)



RJNF / FUKUI

AD CHART

CHANGE : Width of TWY(12.5m→15.0m). Shape of APN.



STANDARD DEPARTURE CHART -INSTRUMENT

RJNF / FUKUI

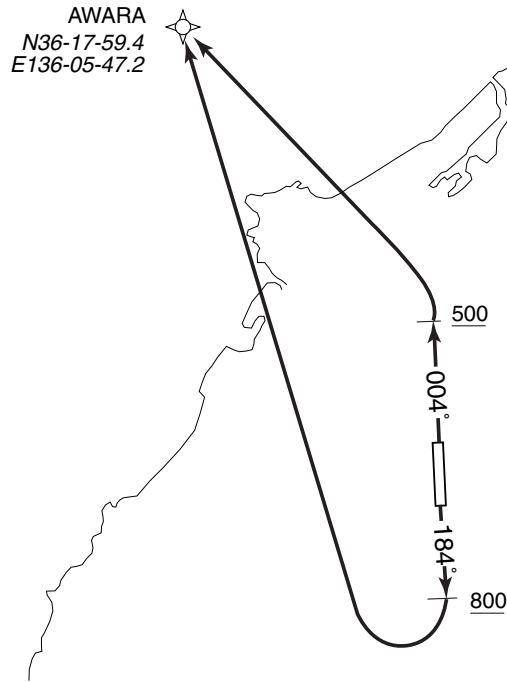
RNAV SID

AWARA ONE RNAV DEPARTURE

Basic RNP1

Note GNSS required.

VAR 8° W(2010)



Note: RWY18: 5.0% climb gradient required up to 1100FT.

AWARA ONE RNAV DEPARTURE

RWY18: Climb on HDG184° at or above 800FT, turn right direct to AWARA.  
 RWY36: Climb on HDG004° at or above 500FT, turn left direct to AWARA.  
 Note: RWY18: 5.0% climb gradient required up to 1100FT.

RWY18

Rcmd. Path Terminator	Fix ID (Waypoint Name)	Fly Over	Distance (NM)	MAG Track (TRUE Track)	Turn Direction	Altitude (FT)	Speed Limit (KIAS)	Vertical Angle	Navigation Performance
VA	—	—	—	184° (175.9°)	—	+800	—	—	Basic RNP1
DF	AWARA	—	—	—	R	—	—	—	Basic RNP1

RWY36

Rcmd. Path Terminator	Fix ID (Waypoint Name)	Fly Over	Distance (NM)	MAG Track (TRUE Track)	Turn Direction	Altitude (FT)	Speed Limit (KIAS)	Vertical Angle	Navigation Performance
VA	—	—	—	004° (355.9°)	—	+500	—	—	Basic RNP1
DF	AWARA	—	—	—	L	—	—	—	Basic RNP1

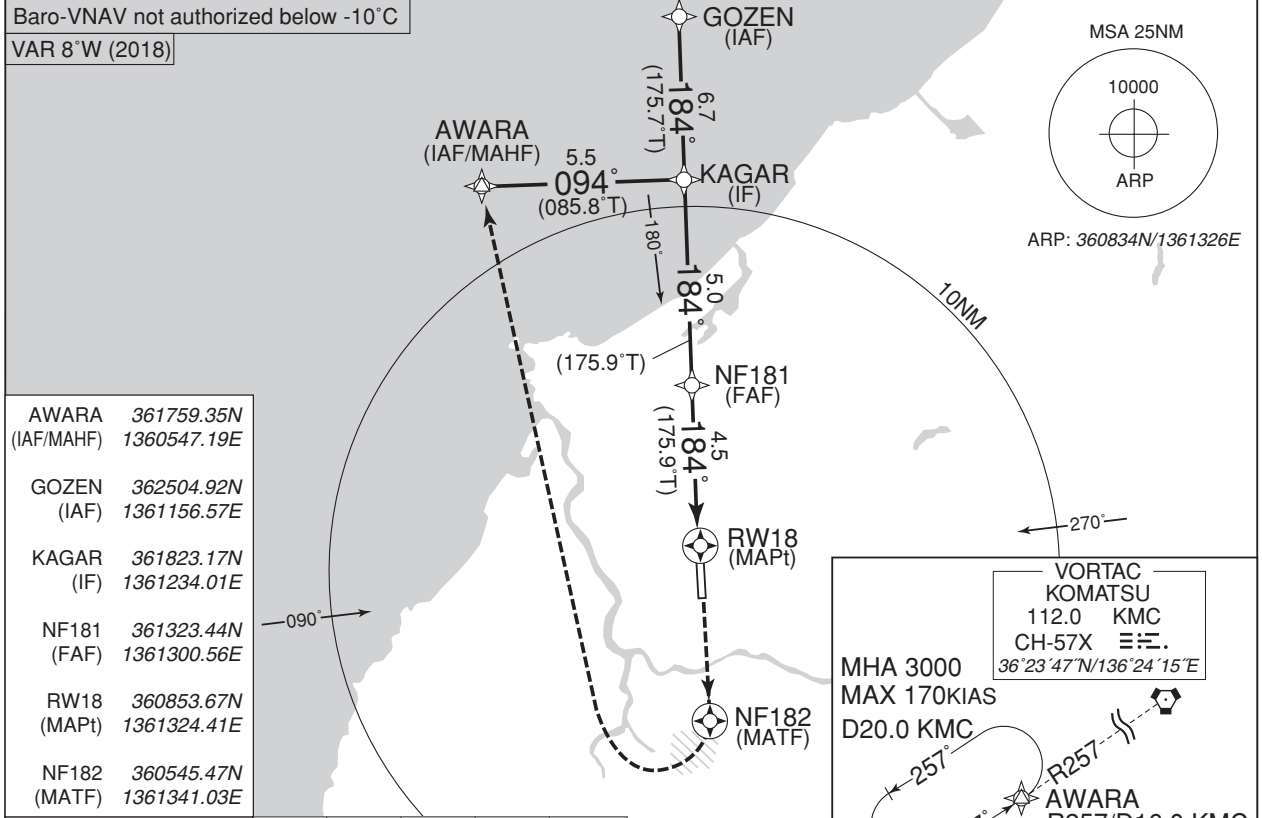
INSTRUMENT APPROACH CHART

RJNF / FUKUI

RNAV (GNSS) RWY18

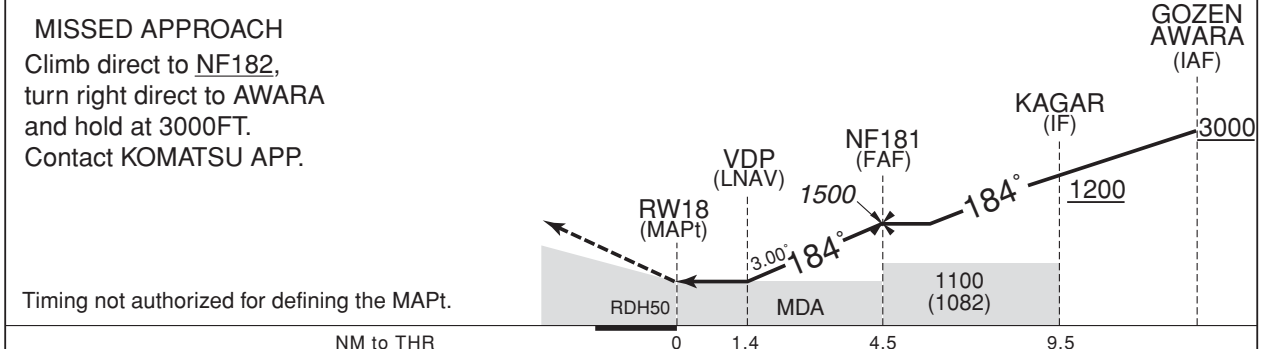
<p><b>KOMATSU APP</b></p> <p>120.1 - 261.2 - 362.3</p> <p>1. DME/DME RNP0.3 not authorized. 2. RNP0.3 required. 3. GNSS required. For E/TSO-C129() sensor, contingency means required, such as IRU.</p>	<p><b>FUKUI REMOTE</b></p> <p>118.6</p>	<p><b>NO RADAR</b></p>
---	---	------------------------

Baro-VNAV not authorized below -10°C  
VAR 8°W (2018)



AWARA (IAF/MAHF)	361759.35N	1360547.19E
GOZEN (IAF)	362504.92N	1361156.57E
KAGAR (IF)	361823.17N	1361234.01E
NF181 (FAF)	361323.44N	1361300.56E
RW18 (MAPt)	360853.67N	1361324.41E
NF182 (MATF)	360545.47N	1361341.03E

NM to Next Fix	MAPt	2	3	4	FAF	
ALT (3.0° APCH Path)		-	704	1022	1341	1500



MISSED APPROACH  
Climb direct to NF182, turn right direct to AWARA and hold at 3000FT. Contact KOMATSU APP.  
Timing not authorized for defining the MAPt.

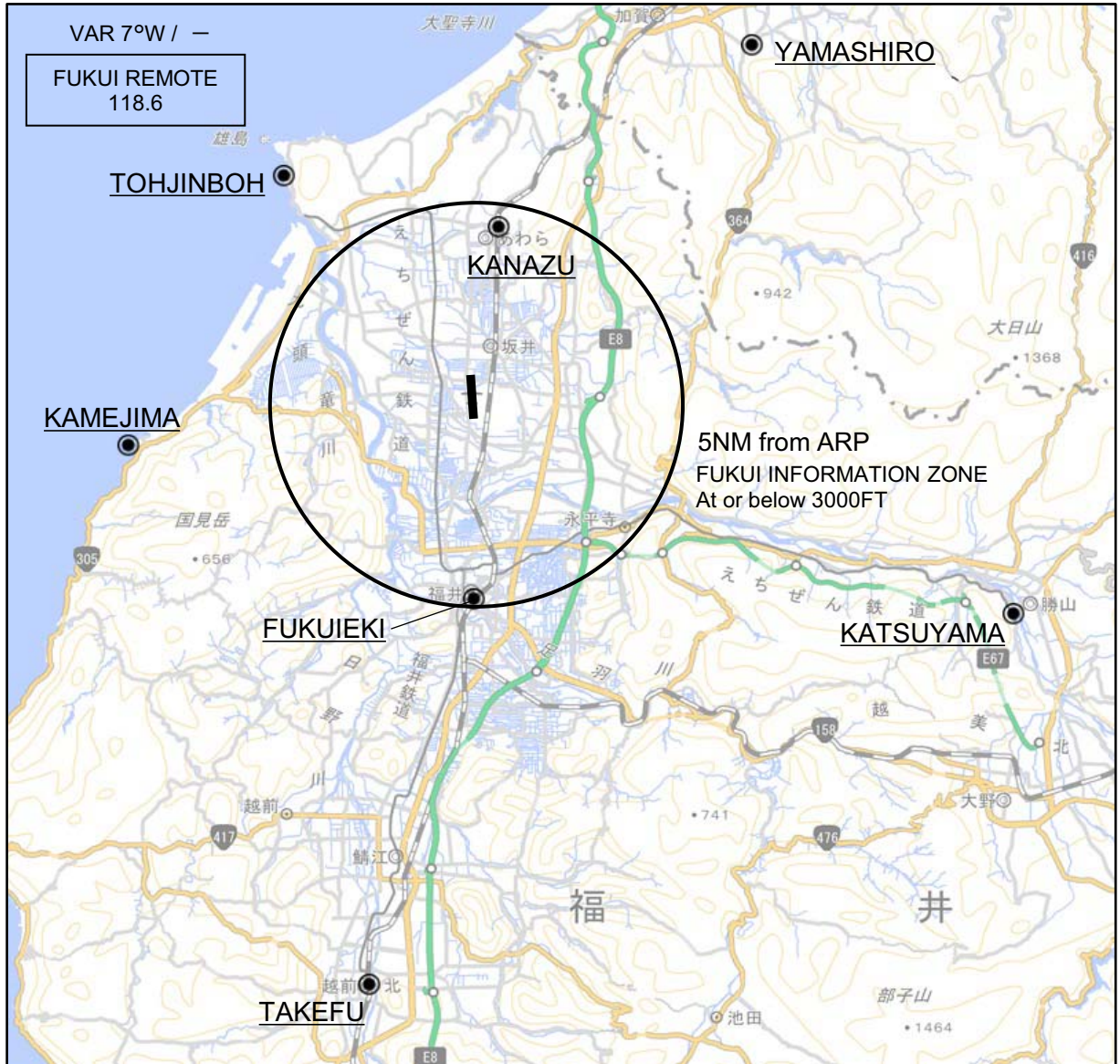
Missed APCH climb gradient MNM 5.0%						
<b>MINIMA</b>		THR elev. 17		AD elev. 18		
CAT	LNAV/VNAV		LNAV		CIRCLING	
	DA(H)	CMV	MDA(H)	CMV	MDA(H)	VIS
A	480 (463)	1500	480 (462)	1500	520 (502)	1600
B						
C	-	-	-	-	-	-
D	-	-	-	-	-	-

MINIMA with Missed APCH climb gradient of 2.5% are not established.

CHANGE : VAR, AWARA, Missed Approach

RJNF / FUKUI

Visual REP



※図中に標高を示す数字がある場合、単位はメートル(m)である。The unit of measurement used to express elevation is meter(m).

CHANGE : Map updated. BRG/DIST from ARP.

Call sign	BRG / DIST from ARP	Remarks
山代 Yamashiro	037°T / 11.1NM	山代温泉街 Town of the Yamashiro hot-spring
金津 Kanazu	007°T / 4.4NM	JR芦原温泉駅 Station
勝山 Katsuyama	112°T / 14.0NM	えちぜん鉄道駅 Station
武生 Takefu	190°T / 14.6NM	JR駅 Station
亀島 Kamejima	263°T / 8.5NM	岩礁 Reef
東尋坊 Tohjinboh	320°T / 7.3NM	タワー Tower
福井駅 Fukuieki	180°T / 4.8NM	JR駅 Station