

## AD 2 AERODROMES

## RJER AD 2.1 AERODROME LOCATION INDICATOR AND NAME

## RJER - RISHIRI

## RJER AD 2.2 AERODROME GEOGRAPHICAL AND ADMINISTRATIVE DATA

1	ARP coordinates and site at AD	451431N/1411115E 057° / 900m from RWY07 THR
2	Direction and distance from (city)	23nm 242° QTE from Wakkanai city
3	Elevation/ Reference temperature	99FT / 23°C(2004-2008)
4	Geoid undulation at AD ELEV PSN	94FT
5	MAG VAR/ Annual change	10°W(2009) / 1.9°E
6	AD Administration, address, telephone, telefax, telex, AFS, e- mail and/or Web-site addresses	Hokkaido, Public AP Airport administration branch 1143 Oshidomari-aza-hondomari, Rishirifuji-cho, Rishiri-gun, Hokkaido TEL:0163-82-1269 FAX:0163-82-1414
7	Types of traffic permitted(IFR/ VFR)	IFR/VFR
8	Remarks	Nil

## RJER AD 2.3 OPERATIONAL HOURS

1	AD Administration	0000 - 0800
2	Customs and immigration	On request Customs: 0162-33-1075 Immigration: 0162-23-3269
3	Health and sanitation	Quarantine(human): On request(0162-23-4403) Quarantine(animal, plant): Nil
4	AIS Briefing Office	Nil
5	ATS Reporting Office(ARO)	Nil
6	MET Briefing Office	H24 (NEW CHITOSE)
7	ATS	0000-0800 Remarks:Airport Remote Mobile Communication Service Provided By New Chitose FSC.
8	Fuelling	Nil
9	Handling	0000 - 0800
10	Security	0000 - 0800
11	De-icing	Nil
12	Remarks	Nil

**RJER AD 2.4 HANDLING SERVICES AND FACILITIES**

1	Cargo-handling facilities	Nil
2	Fuel/ oil types	Nil
3	Fuelling facilities/ capacity	Nil
4	De-icing facilities	Nil
5	Hangar space for visiting aircraft	Nil
6	Repair facilities for visiting aircraft	Nil
7	Remarks	Nil

**RJER AD 2.5 PASSENGER FACILITIES**

1	Hotels	Nil
2	Restaurants	At Airport
3	Transportation	Buses, Taxis and Rental Car
4	Medical facilities	Nil
5	Bank and Post Office	Nil
6	Tourist Office	Nil
7	Remarks	Nil

**RJER AD 2.6 RESCUE AND FIRE FIGHTING SERVICES**

1	AD category for fire fighting	CAT 7
2	Rescue equipment	Emergency medical equipments conveyance truck x 1, Chemical fire fighting truck x 2
3	Capability for removal of disabled aircraft	Nil
4	Remarks	Nil

**RJER AD 2.7 SEASONAL AVAILABILITY-CLEARING**

1	Types of clearing equipment	Truck for snow clearance x 5 , Rotary x 4 , Snow clearance dozer x 3 , Snow sweeper x 3 , Snow melting agent spray truck x 1
2	Clearance priorities	1:RWY , 2:TWY , 3:Apron
3	Remarks	Nil

**RJER AD 2.8 APRONS, TAXIWAYS AND CHECK LOCATIONS DATA**

1	Apron surface and strength	Strength:Cement-Concrete , PCN 48/R/B/X/T
2	Taxiway width, surface and strength	Width:23m, Strength:Asphalt-Concrete, PCN 50/F/B/X/T
3	ACL and elevation	Not AVBL
4	VOR checkpoints	Not AVBL
5	INS checkpoints	Spot NR 1: 451437.61N/1411105.43E 2: 451436.57N/1411103.17E 3: 451435.84N/1411101.03E
6	Remarks	Nil

**RJER AD 2.9 SURFACE MOVEMENT GUIDANCE AND CONTROL SYSTEM AND MARKINGS**

1	Use of aircraft stand ID signs, TWY guide lines and Visual docking/ parking guidance system of aircraft stands	Nil
2	RWY and TWY markings and LGT	RWY: RWY07/25 (Marking): RWY designation, RWY CL, RWY THR, Aiming point, TDZ, RWY side stripes (LGT): RCLL, REDL, RTHL, RENL, RWY DIST marker LGT TWY: (Marking): TWY CL, TWY side stripe (LGT): TWY edge LGT, TWY CL LGT
3	Stop bars	Nil
4	Remarks	(Marking):Overrun area (LGT): Apron flood LGT

**RJER AD 2.10 AERODROME OBSTACLES**

In approach/TKOF areas

RWY/Area affected	Obstacle type	Coordinates	Elevation	Markings/ LGT	Remarks
Nil					

In circling area and at AD

Obstacle type	Coordinates	Elevation	Markings/ LGT	Remarks
Mountain	451312N/1411010E	301FT	- / LIM(Red)	
Mountain	451356N/1411048E	208FT	- / LIM(Red)	
Mountain	451425N/1411206E	207FT	- / LIM(Red)	
Mountain	451417N/1411323E	371FT	- / LIM(Red)	

## RJER AD 2.11 METEOROLOGICAL INFORMATION PROVIDED

1	Associated MET Office	NEW CHITOSE
2	Hours of service MET Office outside hours	H24 (NEW CHITOSE)
3	Office responsible for TAF preparation Periods of validity	Nil
4	Trend forecast Interval of issuance	Nil
5	Briefing/ consultation provided	Briefing is available upon inquiry at NEW CHITOSE
6	Flight documentation Language(s) used	C En
7	Charts and other information available for briefing or consultation	S <sub>6</sub> , U <sub>85</sub> , U <sub>7</sub> , U <sub>5</sub> , U <sub>3</sub> , U <sub>25</sub> , U <sub>2</sub> /T <sub>r</sub> , P <sub>S</sub> , P <sub>5</sub> , P <sub>3</sub> , P <sub>25</sub> , P <sub>SWE</sub> , P <sub>SWF</sub> , P <sub>SWG</sub> , P <sub>SWI</sub> , P <sub>SWM</sub> , P <sub>SW</sub> (domestic), E, C, W <sub>E</sub> , W <sub>F</sub> , W <sub>G</sub> , W <sub>I</sub> , W, N
8	Supplementary equipment available for providing information	Nil
9	ATS units provided with information	REMOTE
10	Additional information (limitation of service, etc.)	Nil

## RJER AD 2.12 RUNWAY PHYSICAL CHARACTERISTICS

Designations RWY NR	TRUE BRG	Dimensions of RWY(M)	Strength(PCN) and Surface of RWY	THR coordinates THR geoid undulation	THR elevation and highest elevation of TDZ of precision APP RWY
1	2	3	4	5	6
07	57.04°	1800x45	PCN 50/F/B/X/T (1)PCN 55/F/C/X/T (2)PCN 80/F/A/X/T	451415.35N 1411040.77E 94.2FT	THR ELEV : 98FT
25	237.04°	1800x45	Asphalt-Concrete	451447.08N 1411150.01E 93.9FT	THR ELEV : 112FT
Slope of RWY		Strip Dimensions (M)	RESA(Overrun) Dimensions(M)		Remarks
	7	10	11		14
SEE AD2.24 AD CHART		1920x150 1920x150	40x150 190x150	RWY grooving 1800m x 45m (1)BTN 630m and 750m FM RWY25 THR (2)BTN 410m and 570m FM RWY07 THR	

**RJER AD 2.13 DECLARED DISTANCES**

RWY Designator	TORA (m)	TODA (m)	ASDA (m)	LDA (m)	Remarks
1	2	3	4	5	6
07	1800	1800	1800	1800	Nil
25	1800	1800	1800	1800	Nil

**RJER AD 2.14 APPROACH AND RUNWAY LIGHTING**

RWY Designator	APCH LGT type LEN INTST	RTHL Color WBAR	PAPI (VASIS) Angle DIST FM THR MEHT	RTZL LEN	RCLL LEN Spacing Color INTST	REDL LEN Spacing Color INTST	RENL Color WBAR	STWL LEN Color
1	2	3	4	5	6	7	8	9
07	Nil	Green	PAPI 3.0°/LEFT 356.1m 61FT	Nil	1,800m 30m Coded color (White/Red) LIH	1,800m 60m Coded color (White/Yellow) LIH	Red	Nil(*2)
25	SALS (*1) 420m LIH	Green	PAPI 3.0°/LEFT 428.0m 61FT	Nil	1,800m 30m Coded color (White/Red) LIH	1,800m 60m Coded color (White/Yellow) LIH	Red	Nil(*2)
Remarks								
10								
SALS with RAI(LEN:480m)(*1) Overrun area edge LGT(LEN:60m Color:Red)(*2) RWY THR ID LGT FOR RWY07 THR(Color:White)								

**RJER AD 2.15 OTHER LIGHTING, SECONDARY POWER SUPPLY**

1	ABN/IBN location, characteristics and hours of operation	ABN: 451443N/1411104E, ALTN FLG White/Green EV4.3sec, HO
2	LDI location and LGT Anemometer location and LGT	LDI:Nil Anemometer: RWY07:300m from RWY07 THR, LGTD RWY25:308m from RWY25 THR, LGTD
3	TWY edge and centerline lighting	TWY edge and center line lights installed, see AD 2.9
4	Secondary power supply/ switch-over time	Within 15 sec:ALL LGT(except for OBST LGT)
5	Remarks	WDI LGT

**RJER AD 2.16 HELICOPTER LANDING AREA**

Nil
-----

## RJER AD 2.17 ATS AIRSPACE

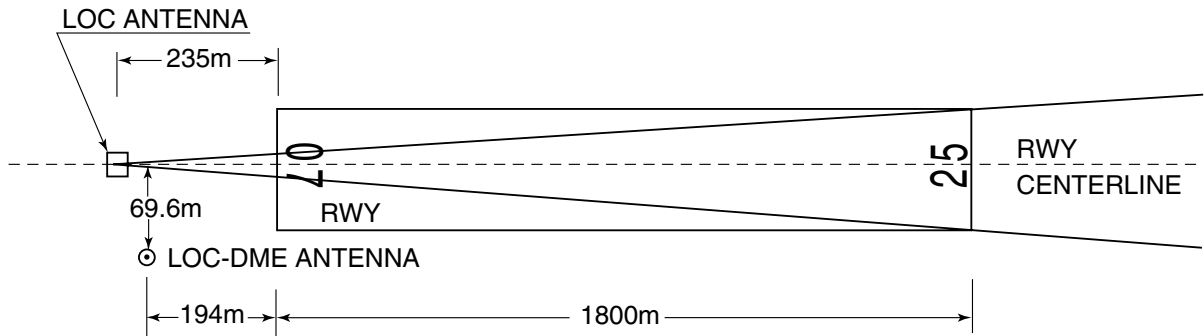
Designation and lateral limits		Vertical limits (ft)	Airspace classification	ATS unit call sign Language	Remarks
1		2	3	4	6
Rishiri Information Zone	Area within a radius of 5nm(9km) of Rishiri ARP	3,000 or below	E	Rishiri remote En	

## RJER AD 2.18 ATS COMMUNICATION FACILITIES

Service designation	Call sign	Frequency	Hours of operation	Remarks
1	2	3	4	5
A/G	Rishiri Remote	122.7MHz	0000 - 0800	RAG controlled by New Chitose FSC

## RJER AD 2.19 RADIO NAVIGATION AND LANDING AIDS

Type of aid (VOR declination)	ID	Frequency	Hours of operation	Position of transmitting antenna coordinates	Elevation of DME transmitting antenna	Remarks
1	2	3	4	5	6	7
VOR (10°W/2019)	RSE	114.6MHz	H24	451444.38N/ 1411112.36E		Unusable: 130°-140° beyond 35nm BLW 8000ft 140°-200° BLW 8000ft
DME	RSE	1180MHz (CH-93X)	H24	451444.38N/ 1411112.36E	109.6ft	Unusable: 110°-120° beyond 35nm BLW 4000ft 130°-140° beyond 20nm BLW 8000ft 140°-200° BLW 8000ft
LOC 25	IRS	109.3MHz	0000 - 0800	451411.20N/ 1411031.69E		LOC:235m(771ft) away FM RWY 07 THR, BRG(MAG)247°.
LOC-DME 25	IRS	991MHz (CH-30X)	0000 - 0800	451410.03N/ 1411034.98E	106ft	DME:194m(636ft) away FM RWY 07 THR, 69.6m(228ft) SE of RCL.
MSAS		1575.42MHz	H24			Transmitting antennas are satellite based.



REMARKS : 1. LOC beam BRG(MAG) 247°  
2. ELEV of LOC-DME 32.17m(106ft )

### RJER AD 2.20 LOCAL TRAFFIC REGULATIONS

1. Airport regulations

Nil

2. Taxiing to and from stands

Nil

3. Parking area for small aircraft(General aviation)

Nil

4. Parking area for helicopters

Nil

5. Apron - taxiing during winter conditions

Nil

6. Taxiing - limitations

Nil

7. School and training flights - technical test flights - use of runways

Nil

8. Helicopter traffic - limitation

Nil

9. Removal of disabled aircraft from runways

Nil

**RJER AD 2.21 NOISE ABATEMENT PROCEDURES**

Nil

**RJER AD 2.22 FLIGHT PROCEDURES**

**1. TAKE OFF MINIMA**

	RWY	REDL & RCLL AVBL	REDL or RCLL AVBL	REDL & RCLL Not AVBL
		CEIL-VIS	CEIL-VIS	CEIL-VIS
TKOF ALTN AP Filed	07	300'-800m	300'-1000m	300'-1200m
	25			
Other	07	AVBL LDG MINIMA		
	25			

NOTE: SIDs are designed in accordance with provisional standards for FLIGHT PROCEDURE DESIGN.

**2. TAKE OFF MINIMA for RNAV DEPARTURE**

	RWY	ACFT CAT	REDL & RCLL		REDL or RCLL or RCL Marking		NIL (DAYTIME ONLY)	
			RVR	VIS	RVR	VIS	RVR	VIS
Multi-Engine ACFT with TKOF ALTN AP FILED	07	A,B,C	-	400m	-	400m	-	500m
	25	A,B,C	-	400m	-	400m	-	500m
OTHER	07	A,B,C	AVBL LDG MINIMA					
	25							

**RJER AD 2.23 ADDITIONAL INFORMATION**

Nil

**RJER AD 2.24 CHARTS RELATED TO AN AERODROME**

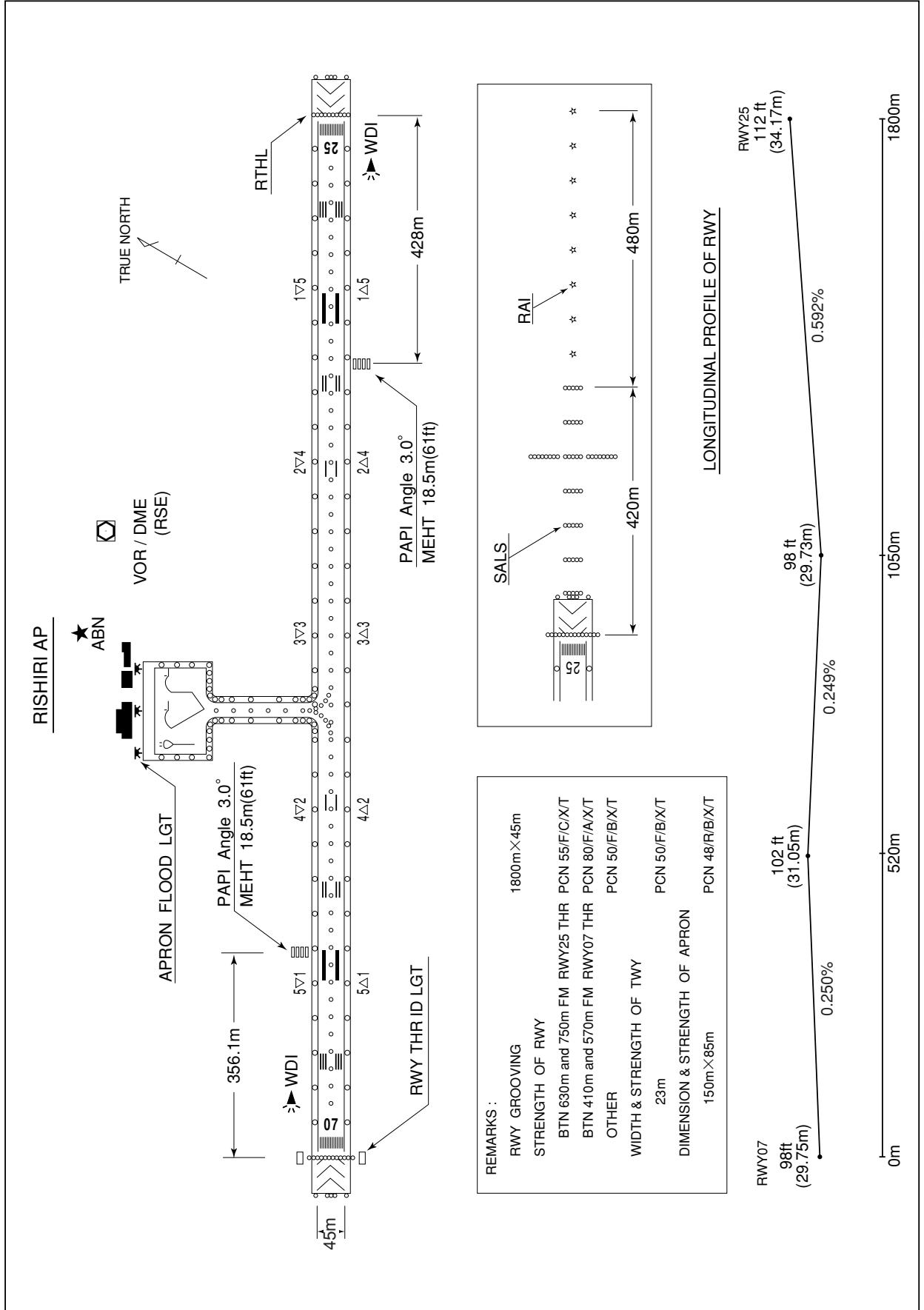
Aerodrome/Heliport Chart  
 Standard Departure Chart - Instrument (RISHIRI REVERSAL)\*  
 Standard Departure Chart - Instrument (LEDAX-RNAV)  
 Instrument Approach Chart (VOR/DME/LOC RWY25)\*  
 Instrument Approach Chart (VOR/DME A)\*  
 Instrument Approach Chart (VOR/DME B)\*  
 Instrument Approach Chart (RNAV(GNSS) RWY25)  
 Instrument Approach Chart (RNAV(GNSS) RWY07)  
 Other Chart (Visual REP)  
 Other Chart (MVA CHART)

\*: Designed in accordance with provisional standards for FLIGHT PROCEDURE DESIGN.



RJER / RISHIRI

AD CHART

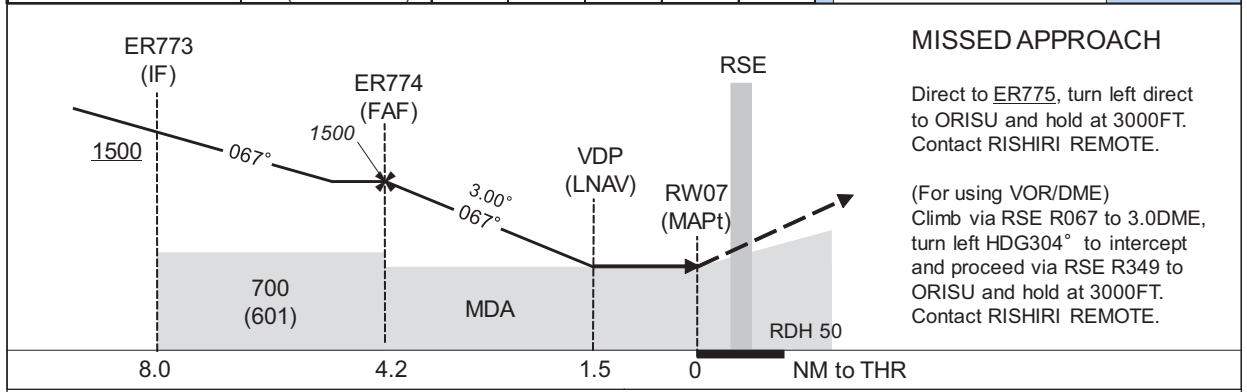
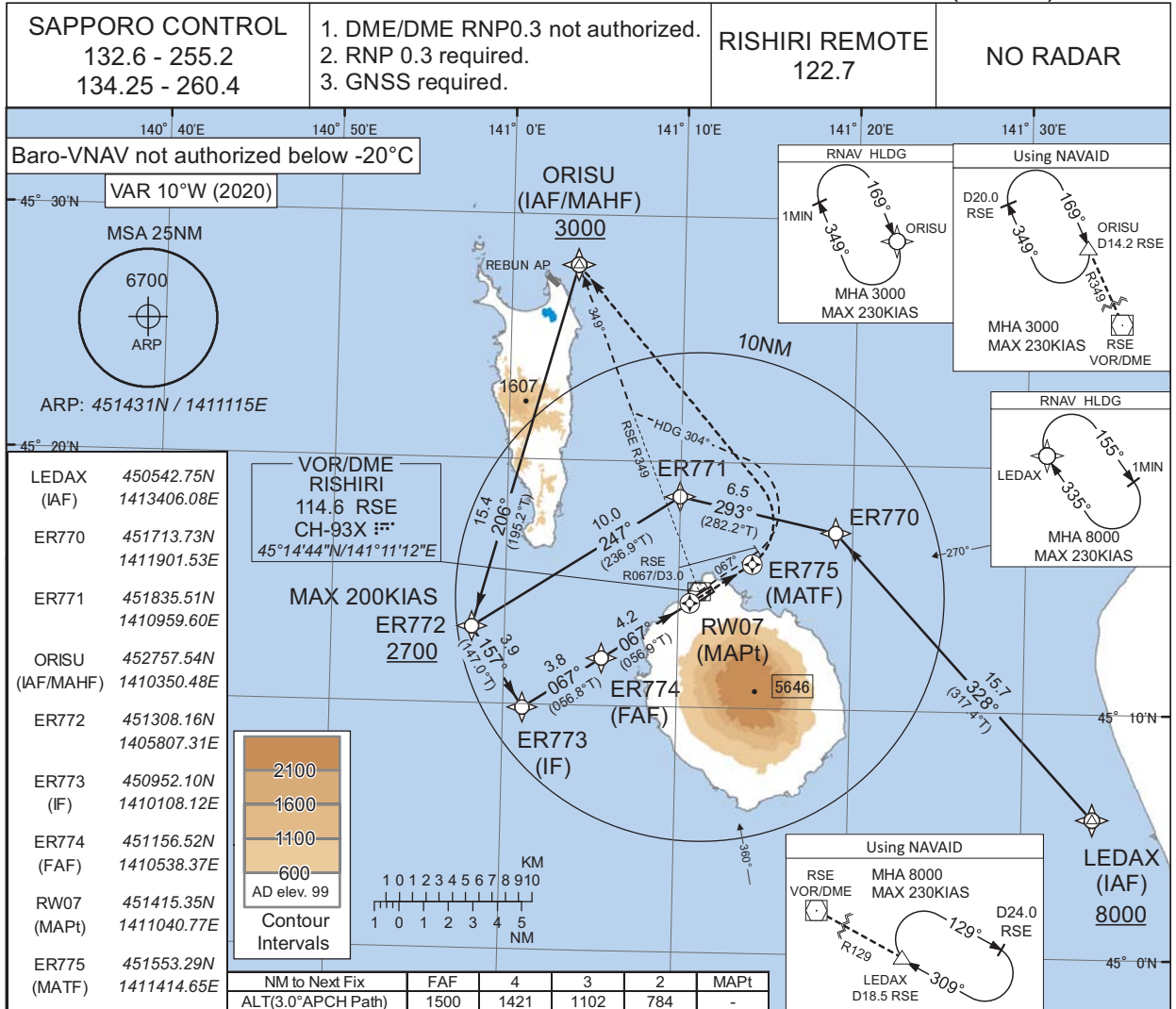


**INTENTIONALLY LEFT BLANK**

INSTRUMENT APPROACH CHART

RJER / RISHIRI

RNAV(GNSS) RWY07



CHANGE : New PROC	MINIMA	THR elev. 98		AD elev. 99		
	CAT	LNAV/VNAV		LNAV		CIRCLING
		DA(H)	CMV	MDA(H)	CMV	MDA(H)
	A	610(512)	1500	610(511)	1500	610(511)
B	2000		2000			
C	-	-	-	-	-	-
D	-	-	-	-	-	-

Circling to NORTH side of RWY only.

STANDARD DEPARTURE CHART-INSTRUMENT

RJER / RISHIRI

SID

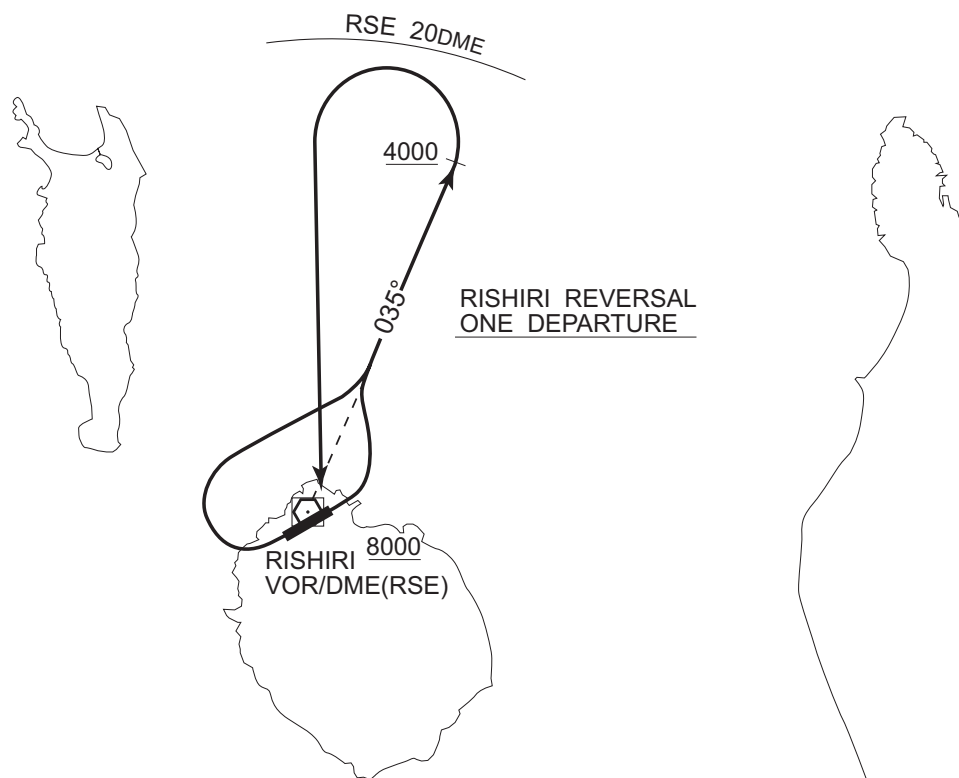
RISHIRI REVERSAL ONE DEPARTURE

RWY07 : Turn left,....

RWY25 : Turn right,....

.... Climb via RSE R-035 to 4,000ft or above, turn left within RSE 20DME, proceed to RSE VOR/DME.

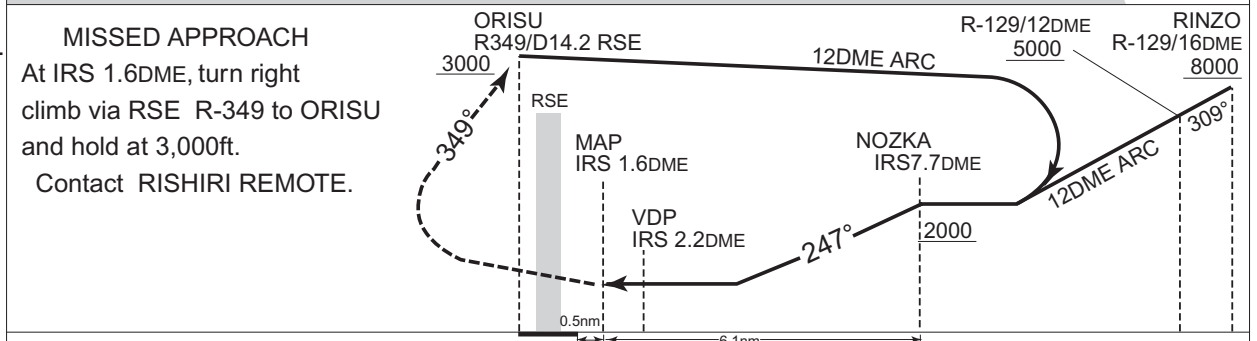
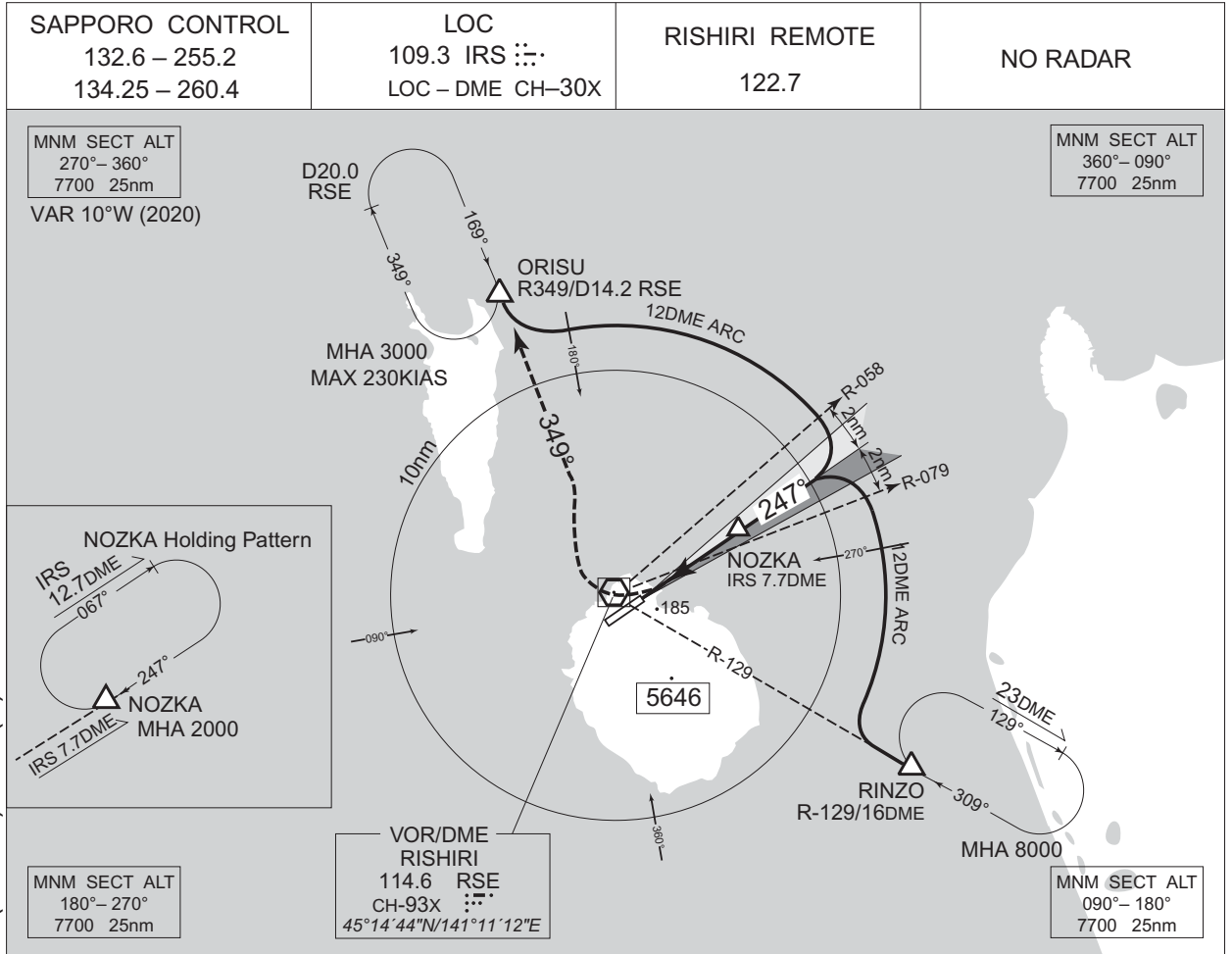
Cross RSE VOR/DME at or above 8,000ft.



INSTRUMENT APPROACH CHART

RJER / RISHIRI

VOR/DME/LOC RWY25



MINIMA		THR elev. 112	AD elev. 99	
CAT	MDA(H)		CIRCLING	
	MDA(H)	CMV	MDA(H)	VIS
A	500 (401)	900	600 (501)	1600
B		1000	630 (531)	2400
C			-	-
D	-	-	-	-

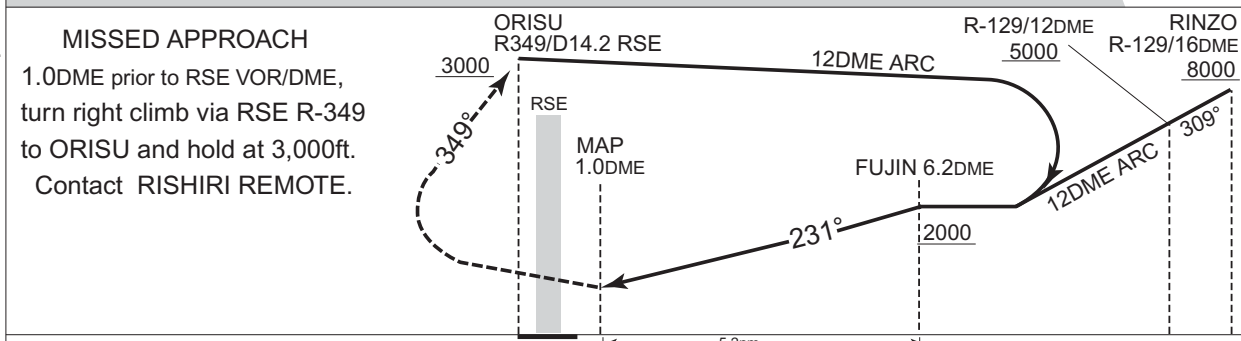
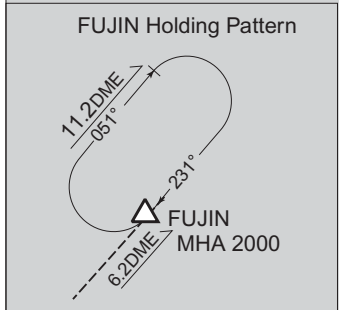
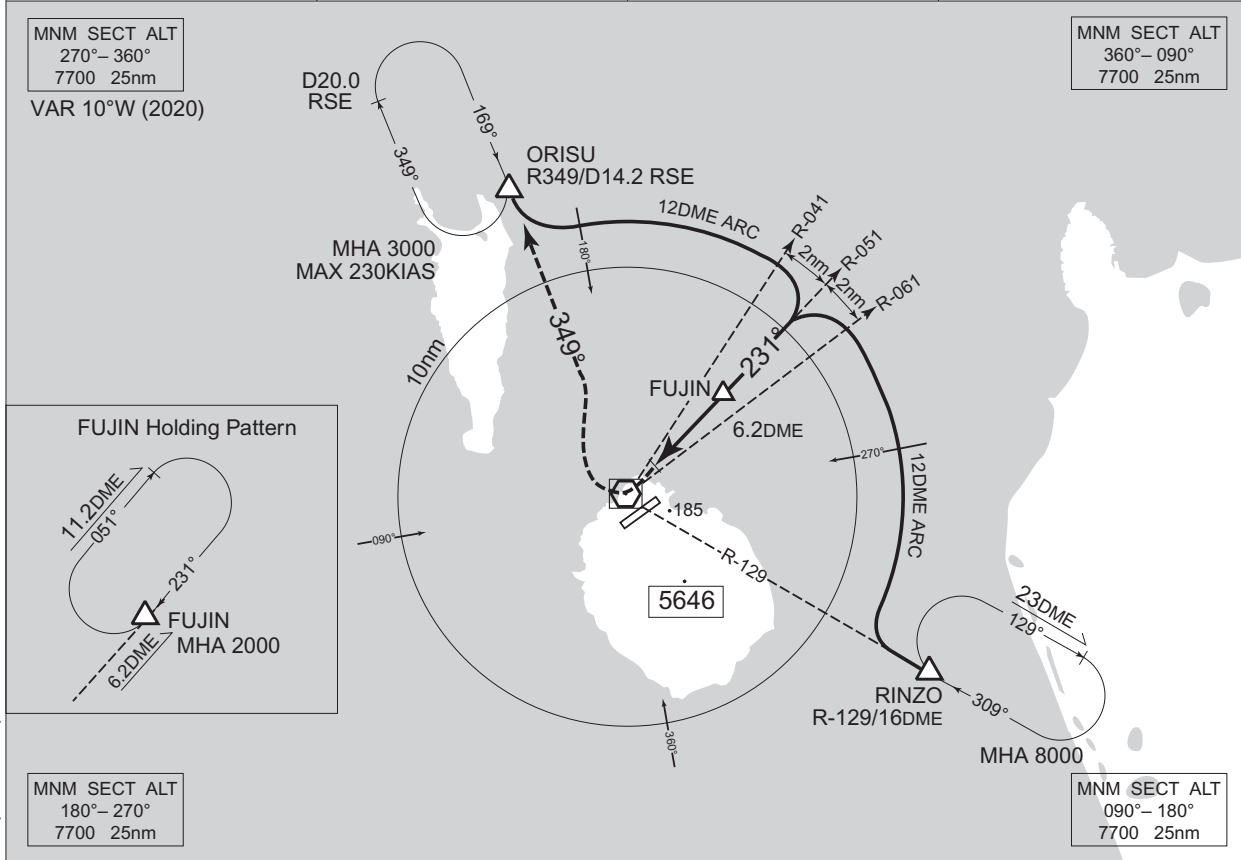
Circling to North side of RWY only.

INSTRUMENT APPROACH CHART

RJER / RISHIRI

VOR/DME A

SAPPORO CONTROL 132.6 – 255.2 134.25 – 260.4	RISHIRI VOR/DME 114.6 RSE CH-93X 45°14'44"N/141°11'12"E	RISHIRI REMOTE 122.7	NO RADAR
--	--	-------------------------	----------



MINIMA		AD elev. 99
CAT	CIRCLING	
	MDA(H)	VIS
A	720 (621)	1600
B		2400
C		
D	-	-

Circling to North side of RWY only.

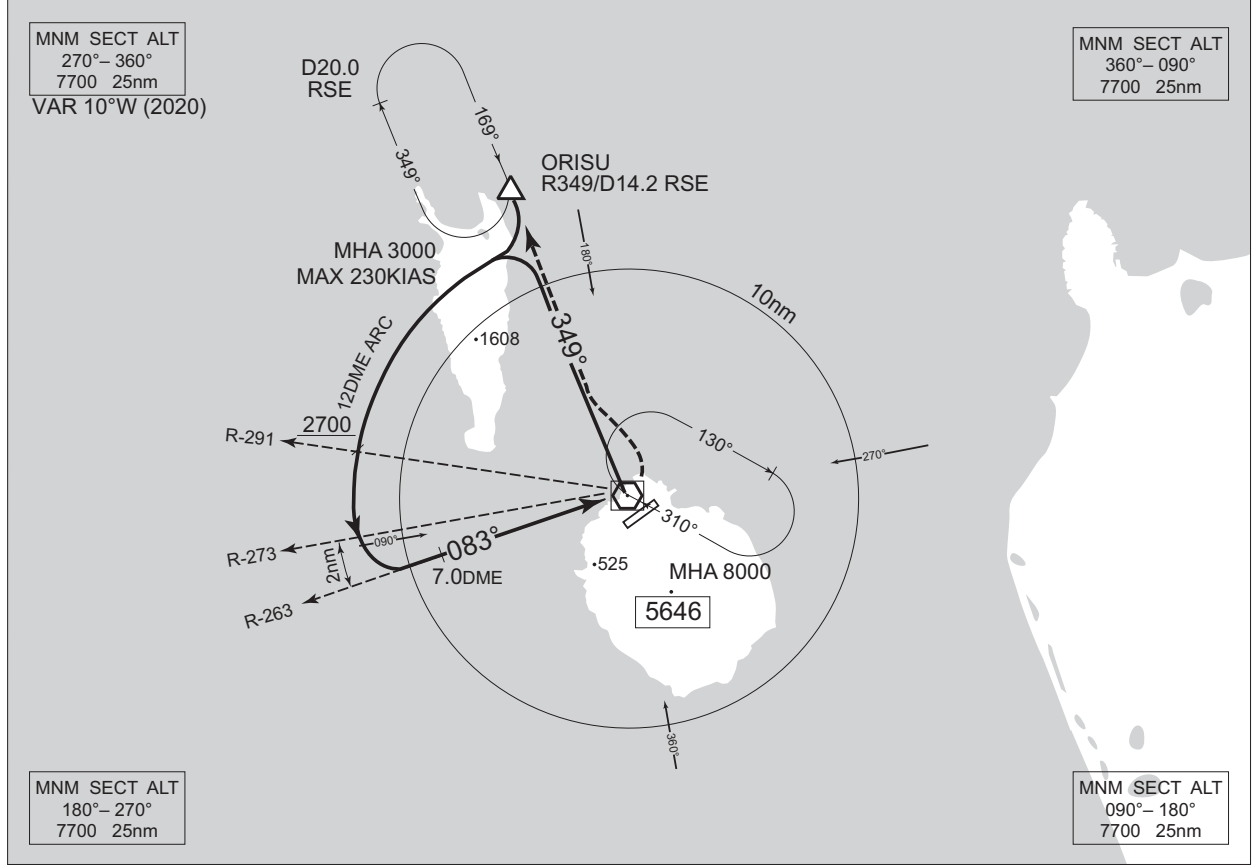
CHANGE : ORISU established. KONBU abolished. HLDG pattern(ORISU).

INSTRUMENT APPROACH CHART

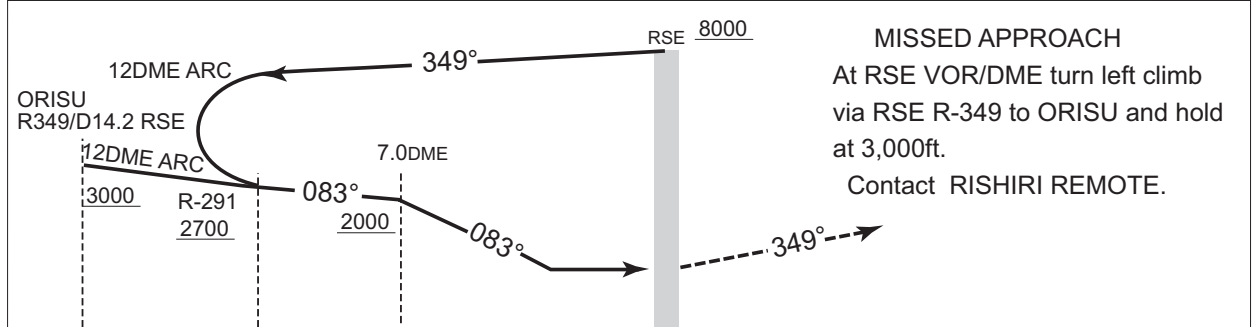
RJER / RISHIRI

VOR/DME B

SAPPORO CONTROL 132.6 – 255.2 134.25 – 260.4	RISHIRI VOR/DME 114.6 RSE CH-93X 45°14'44"N/141°11'12"E	RISHIRI REMOTE 122.7	NO RADAR
--	--	-------------------------	----------



CHANGE : ORISU established. KONBU abolished. HLDG pattern (ORISU).



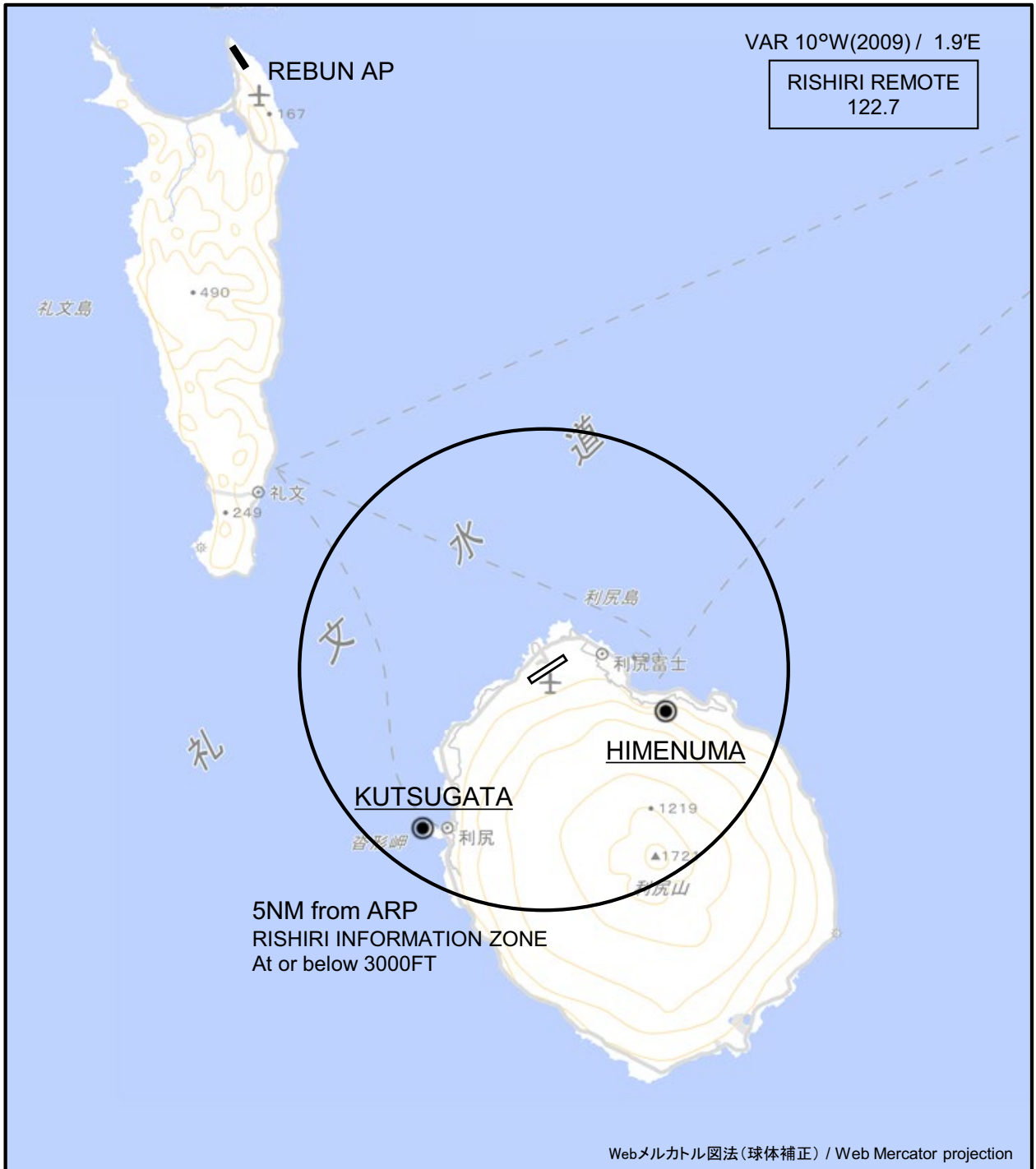
MINIMA		AD elev. 99	
CAT	CIRCLING		
	MDA(H)	VIS	
A	840 (741)	1600	
B		2400	
C		-	
D	-	-	

Circling to North side of RWY only.

INSTRUMENT APPROACH CHART

RJER / RISHIRI

Visual REP



CHANGE : Map updated. BRG/DIST from ARP.

※図中に標高を示す数字がある場合、単位はメートル(m)である。The unit of measurement used to express elevation is meter(m).

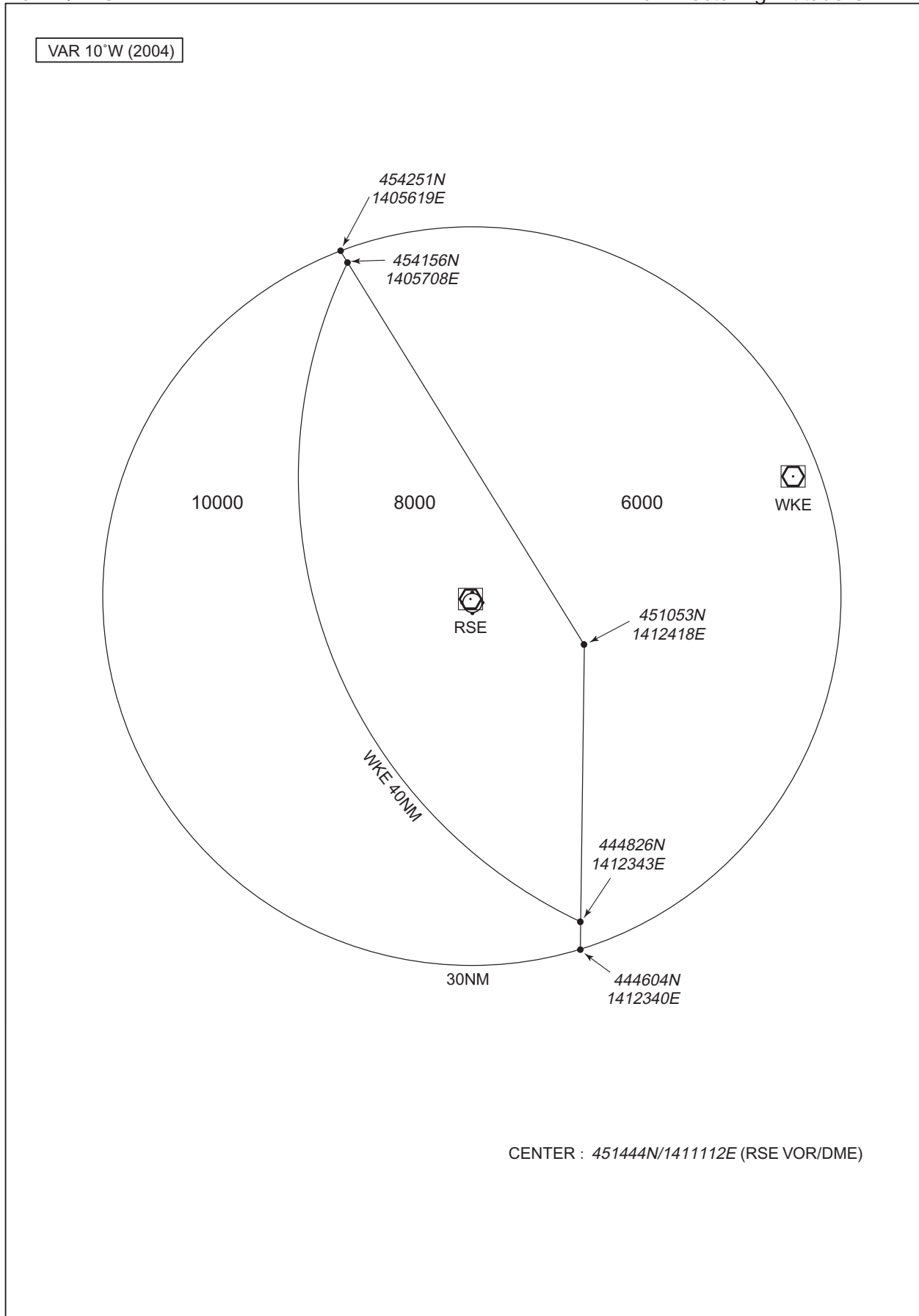
Call sign	BRG / DIST from ARP	Remarks
姫沼 Himenuma	110°T / 2.7NM	姫沼 Pond
沓形 Kutsugata	217°T / 4.2NM	沓形岬 Cape

Note : In the SE through SW of the airport, A/G COM from Rishiri Remote is blinded by Mt. Rishiri(1,721m/5,646ft).



RJER / RISHIRI

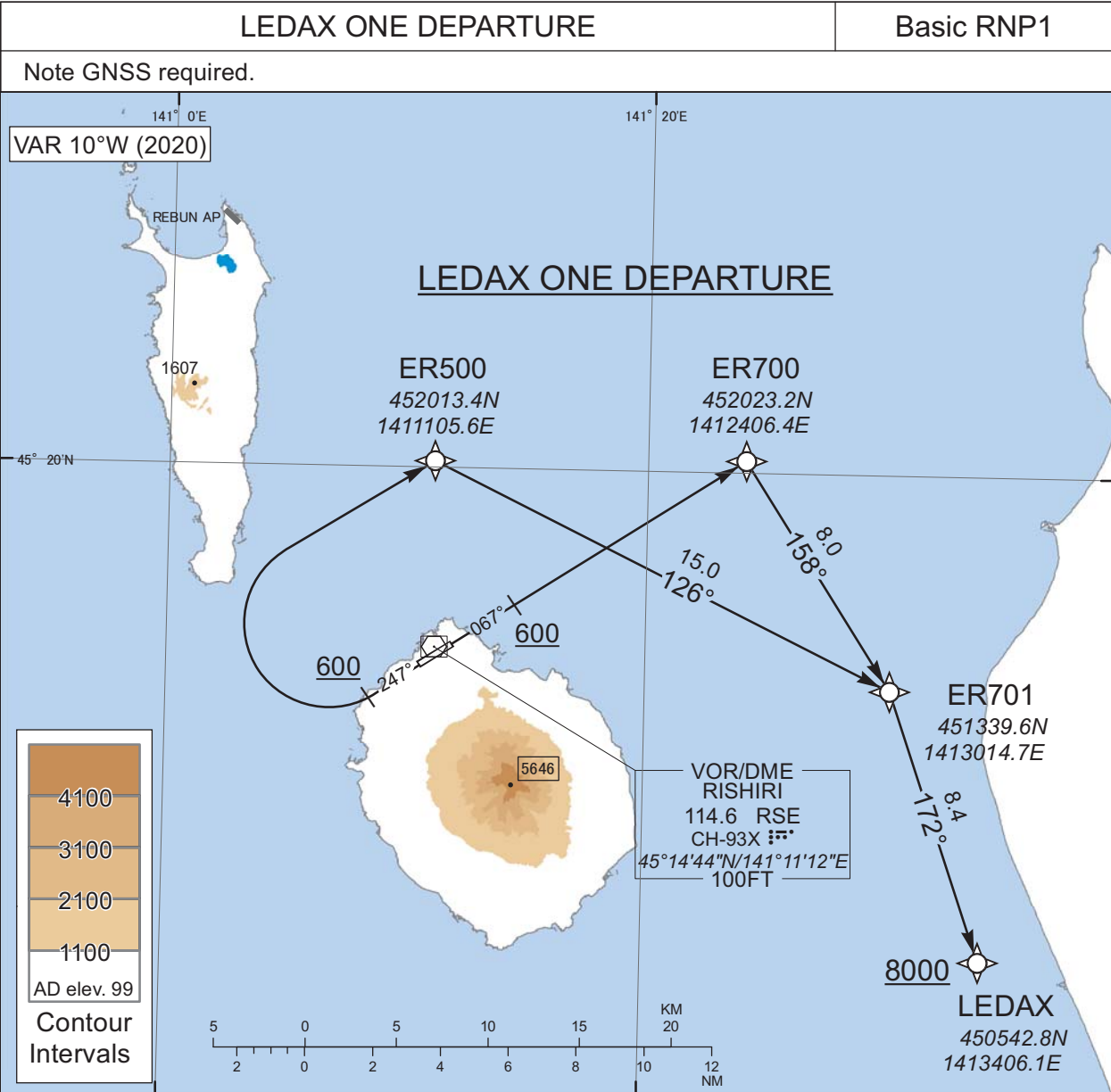
Minimum Vectoring Altitude CHART



STANDARD DEPARTURE CHART-INSTRUMENT

RJER / RISHIRI

RNAV SID



**LEDAX ONE DEPARTURE**

RWY07 : Climb on HDG067° at or above 600FT, direct to ER700, to ER701, to LEDAX at or above 8000FT.

RWY25 : Climb on HDG247° at or above 600FT, turn right direct to ER500, to ER701, to LEDAX at or above 8000FT.

Note RWY25 : 5.2% climb gradient required up to 600FT.

OBST ALT 262FT located at 0.6NM 225°FM end of RWY25.

CHANGE : New PROC

STANDARD DEPARTURE CHART-INSTRUMENT

RJER / RISHIRI

RNAV SID

LEDAX ONE DEPARTURE

RWY07

Serial Number	Path Descriptor	Waypoint Identifier	Fly Over	Course °M(°T)	Magnetic Variation	Distance (NM)	Turn Direction	Altitude (FT)	Speed (KIAS)	Vertical Angle	Navigation Specification
001	VA	-	-	067 (056.9)	-10.4	-	-	+600	-	-	Basic RNP1
002	DF	ER700	-	-	-10.4	-	-	-	-	-	Basic RNP1
003	TF	ER701	-	158 (147.3)	-10.4	8.0	-	-	-	-	Basic RNP1
004	TF	LEDAX	-	172 (161.1)	-10.4	8.4	-	+8000	-	-	Basic RNP1

RWY25

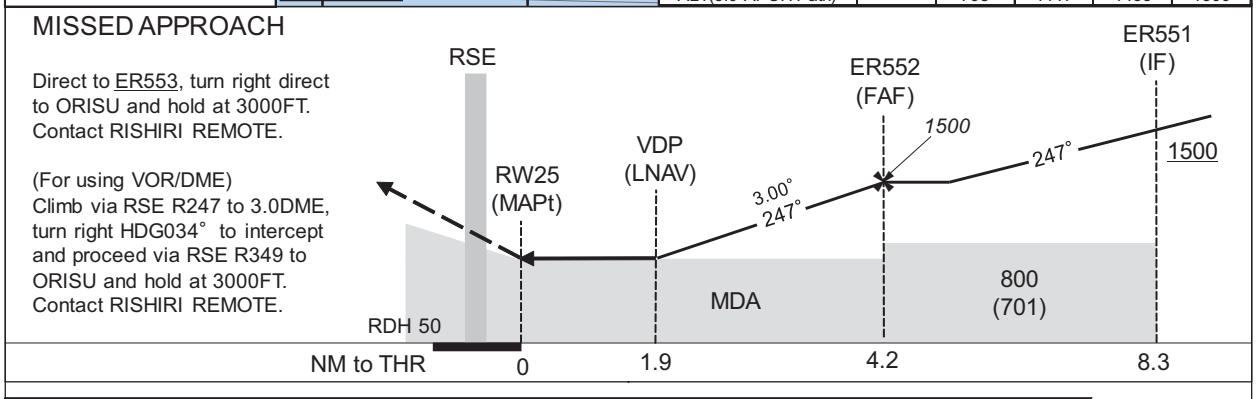
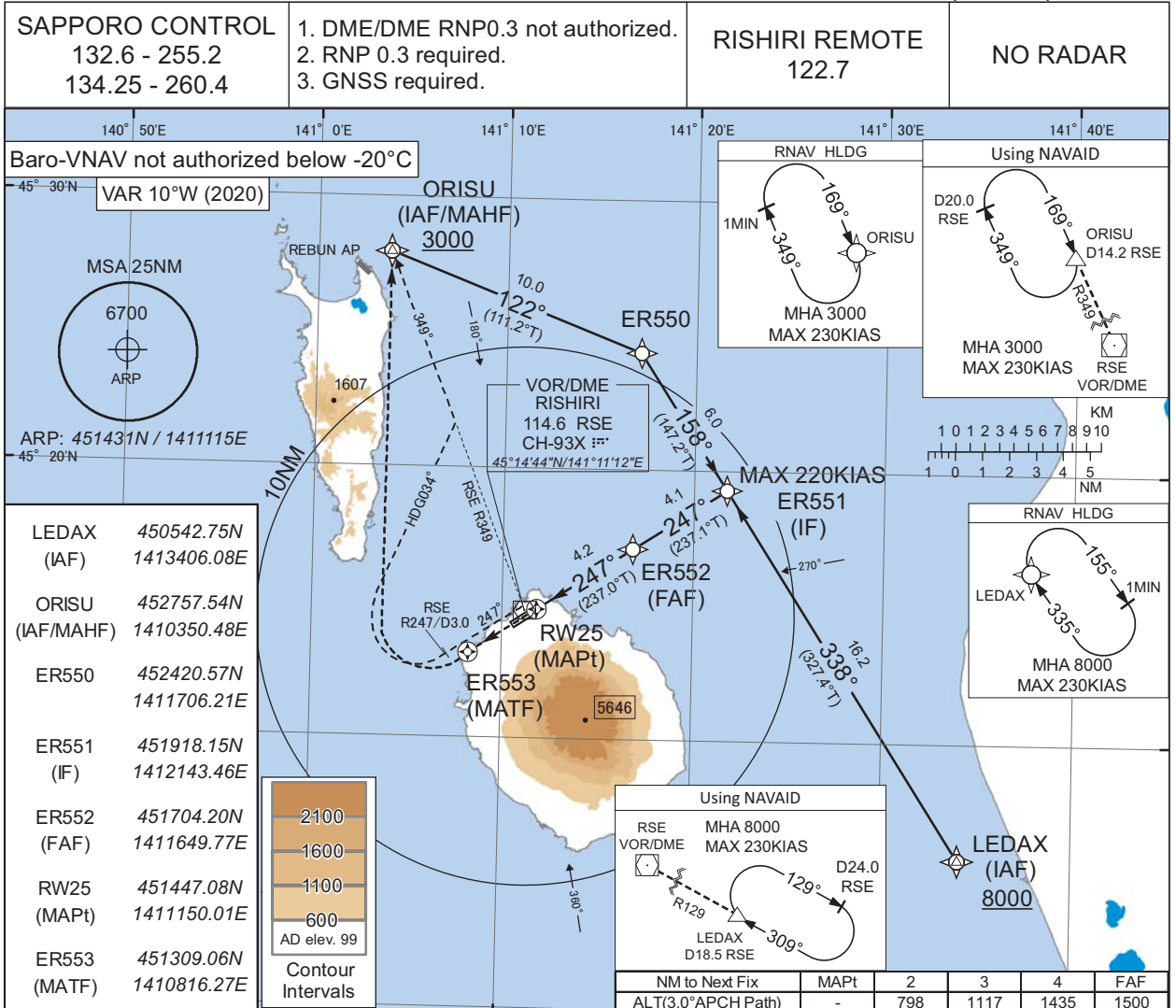
Serial Number	Path Descriptor	Waypoint Identifier	Fly Over	Course °M(°T)	Magnetic Variation	Distance (NM)	Turn Direction	Altitude (FT)	Speed (KIAS)	Vertical Angle	Navigation Specification
001	VA	-	-	247 (236.9)	-10.4	-	-	+600	-	-	Basic RNP1
002	DF	ER500	-	-	-10.4	-	R	-	-	-	Basic RNP1
003	TF	ER701	-	126 (115.9)	-10.4	15.0	-	-	-	-	Basic RNP1
004	TF	LEDAX	-	172 (161.1)	-10.4	8.4	-	+8000	-	-	Basic RNP1

CHANGE : New PROC

INSTRUMENT APPROACH CHART

RJER / RISHIRI

RNAV(GNSS) RWY25

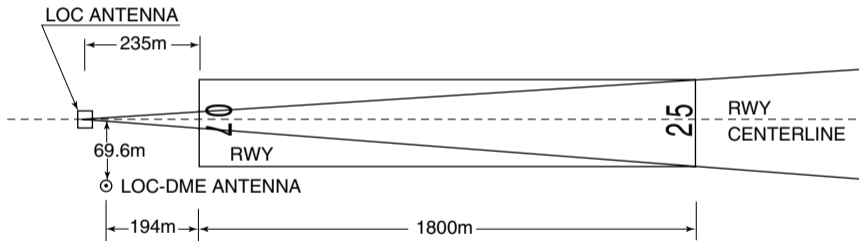


MINIMA		THR elev. 112	AD elev. 99			
CAT	LNAV/VNAV		LNAV		CIRCLING	
	DA(H)	CMV	MDA(H)	CMV	MDA(H)	VIS
A	730(618)	1000	730(631)	1000	730(631)	1600
B		1200		1200		
C	-	-	-	-	-	2400
D	-	-	-	-	-	-

Circling to NORTH side of RWY only.

LOC and LOC-DME

RISHIRI AP



REMARKS : 1. LOC beam BRG(MAG) 247°  
2. ELEV of LOC-DME 32.17m(106ft)