

## AD 2 AERODROMES

## RJEO AD 2.1 AERODROME LOCATION INDICATOR AND NAME

## RJEO - OKUSHIRI

## RJEO AD 2.2 AERODROME GEOGRAPHICAL AND ADMINISTRATIVE DATA

1	ARP coordinates and site at AD	420418N/1392558E 120° / 0.75km from RWY31 THR
2	Direction and distance from (city)	65NM WNW FM Hakodate City
3	Elevation/ Reference temperature	161FT / 25°C(2004-2008)
4	Geoid undulation at AD ELEV PSN	108FT
5	MAG VAR/ Annual change	9°W(2000) / 0.9°E
6	AD Administration, address, telephone, telefax, telex, AFS, e-mail and/or Web-site addresses	Hokkaido, Public AP Airport administration branch: 185-2, Yoneoka, Okushiri-cho, Okushiri-gun, Hokkaido. TEL:01397-3-2153
7	Types of traffic permitted(IFR/ VFR)	IFR/VFR
8	Remarks	Nil

## RJEO AD 2.3 OPERATIONAL HOURS

1	AD Administration	0000 - 0800
2	Customs and immigration	On request Customs: 0138-40-4213 Immigration: 0138-41-6922
3	Health and sanitation	Quarantine(human): On request(0138-59-0248) Quarantine(animal, plant): Nil
4	AIS Briefing Office	Nil
5	ATS Reporting Office(ARO)	Nil
6	MET Briefing Office	H24 (NEW CHITOSE)
7	ATS	0000 - 0800 REMARKS: Airport Remote Mobile Communication Service Provided by New Chitose FSC.
8	Fuelling	Nil
9	Handling	0000 - 0800
10	Security	0000 - 0800
11	De-icing	Nil
12	Remarks	Nil

**RJEO AD 2.4 HANDLING SERVICES AND FACILITIES**

1	Cargo-handling facilities	Nil
2	Fuel/ oil types	Nil
3	Fuelling facilities/ capacity	Nil
4	De-icing facilities	Nil
5	Hangar space for visiting aircraft	Nil
6	Repair facilities for visiting aircraft	Nil
7	Remarks	Nil

**RJEO AD 2.5 PASSENGER FACILITIES**

1	Hotels	Nil
2	Restaurants	Nil
3	Transportation	Buses and Taxis
4	Medical facilities	Hospital in Okushiri-cho 18km
5	Bank and Post Office	Post Office in Okushiri-cho
6	Tourist Office	Nil
7	Remarks	Nil

**RJEO AD 2.6 RESCUE AND FIRE FIGHTING SERVICES**

1	AD category for fire fighting	CAT 4
2	Rescue equipment	Chemical fire fighting truck x 1, Emergency medical equipments conveyance truck x 1
3	Capability for removal of disabled aircraft	Nil
4	Remarks	Nil

**RJEO AD 2.7 SEASONAL AVAILABILITY-CLEARING**

1	Types of clearing equipment	Snow sweeper x 2 , Rotary x 1, Truck x 2, Dozer x 2, Motor grader x 1, Wheel Loader x 1, Anti freezing agent spreader x 1
2	Clearance priorities	1.RWY, 2:TWY, 3:Apron
3	Remarks	Nil

**RJEO AD 2.8 APRONS, TAXIWAYS AND CHECK LOCATIONS DATA**

1	Apron surface and strength	Surface:asphalt-concrete, Strength:PCN 17/F/B/Y/T
2	Taxiway width, surface and strength	WIDTH : 18m Surface:asphalt-concrete, Strength:PCN 17/F/B/Y/T
3	ACL and elevation	Not available
4	VOR checkpoints	Not available
5	INS checkpoints	(Spot NR) 1: 420419.44N/1392607.31E 2: 420420.37N/1392605.17E
6	Remarks	Nil

**RJEO AD 2.9 SURFACE MOVEMENT GUIDANCE AND CONTROL SYSTEM AND MARKINGS**

1	Use of aircraft stand ID signs, TWY guide lines and Visual docking/ parking guidance system of aircraft stands	Nil
2	RWY and TWY markings and LGT	RWY:RWY13/31 (Marking):RWY designation, RWY CL, RWY THR, Aiming point, TDZ, RWY side stripe (LGT):REDL, RTHL, RENL, RWY DIST marker LGT TWY: (Marking):TWY CL, RWY HLDG PSN, TWY side stripe (LGT):TWY edge LGT
3	Stop bars	Nil
4	Remarks	(Marking):Overrun area, ACFT PRKG PSN, Apron TWY CL (LGT):Apron flood LGT

**RJEO AD 2.10 AERODROME OBSTACLES**

In approach/TKOF areas

RWY/Area affected	Obstacle type	Coordinates	Elevation	Markings/ LGT	Remarks
Nil					

In circling area and at AD

Obstacle type	Coordinates	Elevation	Markings/ LGT	Remarks
Mountain•Tree	420537N/1392622E	425FT	- / LIM(Red)	

## RJE0 AD 2.11 METEOROLOGICAL INFORMATION PROVIDED

1	Associated MET Office	NEW CHITOSE
2	Hours of service MET Office outside hours	H24 (NEW CHITOSE)
3	Office responsible for TAF preparation Periods of validity	Nil
4	Trend forecast Interval of issuance	Nil
5	Briefing/ consultation provided	Briefing is available upon inquiry at NEW CHITOSE
6	Flight documentation Language(s) used	C En
7	Charts and other information available for briefing or consultation	S <sub>6</sub> , U <sub>85</sub> , U <sub>7</sub> , U <sub>5</sub> , U <sub>3</sub> , U <sub>25</sub> , U <sub>2/T<sub>r</sub></sub> , P <sub>S</sub> , P <sub>5</sub> , P <sub>3</sub> , P <sub>25</sub> , P <sub>SWE</sub> , P <sub>SWF</sub> , P <sub>SWG</sub> , P <sub>SWI</sub> , P <sub>SWM</sub> , P <sub>SW(domestic)</sub> , E, C, W <sub>E</sub> , W <sub>F</sub> , W <sub>G</sub> , W <sub>I</sub> , W, N
8	Supplementary equipment available for providing information	Nil
9	ATS units provided with information	REMOTE
10	Additional information(limitation of service, etc.)	Nil

## RJE0 AD 2.12 RUNWAY PHYSICAL CHARACTERISTICS

Designations RWY NR	TRUE BRG	Dimensions of RWY(M)	Strength(PCN) and surface of RWY	THR coordinates THR geoid undulation	THR elevation and highest elevation of TDZ of precision APP RWY
1	2	3	4	5	6
13	120.15°	1500x45	PCN 17/F/B/Y/T Asphalt Concrete	420429.89N 1392530.71E 108FT	THR ELEV : 180FT
31	300.15°	1500x45	PCN 17/F/B/Y/T Asphalt Concrete	420405.46N 1392627.13E 109FT	THR ELEV : 141FT
Slope of RWY	Strip Dimensions(M)	RESA(Overrun) Dimensions(M)	Remarks		
7	10	11	14		
See AD2.24 AD CHART	1620x150	40x150 40x150	RWY grooving:1500m x 45m		

**RJEO AD 2.13 DECLARED DISTANCES**

RWY Designator	TORA (m)	TODA (m)	ASDA (m)	LDA (m)	Remarks
1	2	3	4	5	6
13	1500	1500	1500	1500	Nil
31	1500	1500	1500	1500	Nil

**RJEO AD 2.14 APPROACH AND RUNWAY LIGHTING**

RWY Designator	APCH LGT type LEN INTST	RTHL Color WBAR	PAPI (VASIS) Angle DIST FM THR MEHT	RTZL LEN	RCLL LEN Spacing Color INTST	REDL LEN Spacing Color INTST	RENL Color WBAR	STWL LEN Color
1	2	3	4	5	6	7	8	9
13	Nil	Green	PAPI 3.0°/LEFT 310.5m 45ft	Nil	Nil	1,500m 60m Coded color (White/Yellow) LIH	Red	Nil (*2)
31	Nil(*1)	Green	PAPI 3.0°/LEFT 238.7m 45ft	Nil	Nil	1,500m 60m Coded color (White/Yellow) LIH	Red	Nil (*2)
Remarks								
10								
3 APCH LGT beacon are installed at 270m intervals from RWY31 THR.(*1) Overrun area edge LGT(LEN:60m,Color:Red) (*2) RWY THR ID LGT for RWY 13/31 THR (Color: White)								

**RJEO AD 2.15 OTHER LIGHTING, SECONDARY POWER SUPPLY**

1	ABN/IBN location, characteristics and hours of operation	ABN:420423N1392612E, White/Green EV4.3sec,HO
2	LDI location and LGT Anemometer location and LGT	LDI:Nil Anemometer: RWY13:450m from RWY13 THR, 67m from RWY CL RWY31:142m from RWY31 THR, 67m from RWY CL
3	TWY edge and centerline lighting	TWY edge LGT:Blue TWY CL LGT:Nil
4	Secondary power supply/switch-over time	Within 8 sec:ALL LGT
5	Remarks	WDI LGT

**RJEO AD 2.16 HELICOPTER LANDING AREA**

Nil
-----

**RJEO AD 2.17 ATS AIRSPACE**

Designation and lateral limits	Vertical limits (ft)	Airspace classification	ATS unit call sign Language	Remarks
1	2	3	4	6
Nil				

**RJEO AD 2.18 ATS COMMUNICATION FACILITIES**

Service designation	Call sign	Frequency	Hours of operation	Remarks
1	2	3	4	5
A/G	Okushiri Remote	122.7MHz	0000 - 0800	RAG controlled by New Chitose FSC

**RJEO AD 2.19 RADIO NAVIGATION AND LANDING AIDS**

Type of aid (VOR declination)	ID	Frequency	Hours of operation	Position of transmitting antenna coordinates	Elevation of DME transmitting antenna	Remarks
1	2	3	4	5	6	7
VOR (10°W/2019)	ORE	109.85MHz	0000 - 0800	420413.09N/ 1392636.25E	-	VOR unusable: 360°-010° Beyond 15nm BLW 4,000ft. 010°-030° Beyond 10nm BLW 4,000ft. 030°-070° Beyond 30nm BLW 7,000ft. 350°-360° Beyond 30nm BLW 3,000ft.
DME	ORE	1122MHz (CH-35Y)	0000 - 0800	420413.09N/ 1392636.25E	168ft	DME unusable: 360°-010° Beyond 15nm BLW 4,000ft. 010°-030° Beyond 10nm BLW 4,000ft. 030°-050° Beyond 25nm BLW 7,000ft. 050°-070° Beyond 30nm BLW 7,000ft. 320°-350° Beyond 30nm BLW 3,000ft. 350°-360° Beyond 25nm BLW 3,000ft.
MSAS		1575.42MHz	H24			Transmitting antennas are satellite based.

**RJEO AD 2.20 LOCAL TRAFFIC REGULATIONS**

1. Airport regulations

Nil

2. Taxiing to and from stands

Nil

3. Parking area for small aircraft(General aviation)

Nil

4. Parking area for helicopters

Nil

5. Apron - taxiing during winter conditions

Nil

6. Taxiing - limitations

Nil

7. School and training flights - technical test flights - use of runways

Nil

8. Helicopter traffic - limitation

Nil

9. Removal of disabled aircraft from runways

Nil

**RJEO AD 2.21 NOISE ABATEMENT PROCEDURES**

Nil

## RJEO AD 2.22 FLIGHT PROCEDURES

## 1. TAKE OFF MINIMA

	RWY	REDL AVBL	REDL OUT
		CEIL-VIS	CEIL-VIS
TKOF ALTN AP FILED	13	300'-1000m	300'-1200m
	31		
Other	13	AVBL LDG MINIMA	
	31		

NOTE: SIDs are designed in accordance with provisional standards for FLIGHT PROCEDURE DESIGN.

## 2. TAKE OFF MINIMA for RNAV DEPARTURE

	RWY	ACFT CAT	REDL & RCLL		REDL or RCLL or RCL Marking		NIL (DAYTIME ONLY)	
			RVR	VIS	RVR	VIS	RVR	VIS
Multi-Engine ACFT with TKOF ALTN AP FILED	13	A,B,C	-	-	-	400m	-	500m
	31	A,B,C	-	-	-	400m	-	500m
OTHER	13	A,B,C	AVBL LDG MINIMA					
	31							

## RJEO AD 2.23 ADDITIONAL INFORMATION

Nil
-----

## RJEO AD 2.24 CHARTS RELATED TO AN AERODROME

Aerodrome/Heliport Chart Standard Departure Chart - Instrument (ESASI)* Standard Departure Chart - Instrument (AONAE-RNAV) Standard Arrival Chart - Instrument (IKORU-RNAV) Instrument Approach Chart (VOR RWY31)* Instrument Approach Chart (VOR RWY13)* Instrument Approach Chart (VOR A)* Instrument Approach Chart - Instrument (RNAV(GNSS) RWY31) Other Chart(Visual REP)
--

\*: Designed in accordance with provisional standards for FLIGHT PROCEDURE DESIGN.





**INTENTIONALLY LEFT BLANK**

STANDARD DEPARTURE CHART - INSTRUMENT

RJEO / OKUSHIRI

SID

ESASI TWO DEPARTURE

RWY13 : Turn left,...

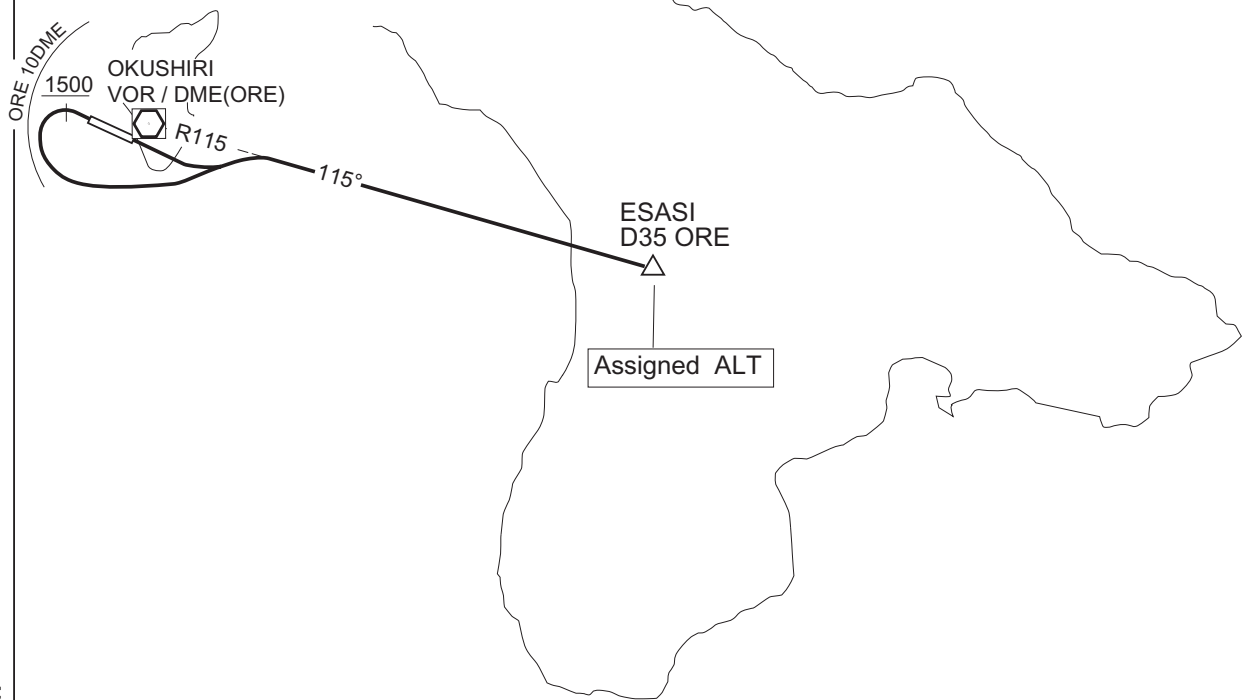
RWY31 : Climb via RWY HDG until 1500FT or above, complete left turn within  
ORE 10DME,...

...climb via ORE R115 to ESASI.

Cross ESASI at assigned or specified altitude.

Note : When take off from RWY13, following climb gradient should be  
maintained until 700FT.

Speed (Knots)	60	90	120	150	180	210
Rate (Feet/Min)	300	450	600	750	900	1050



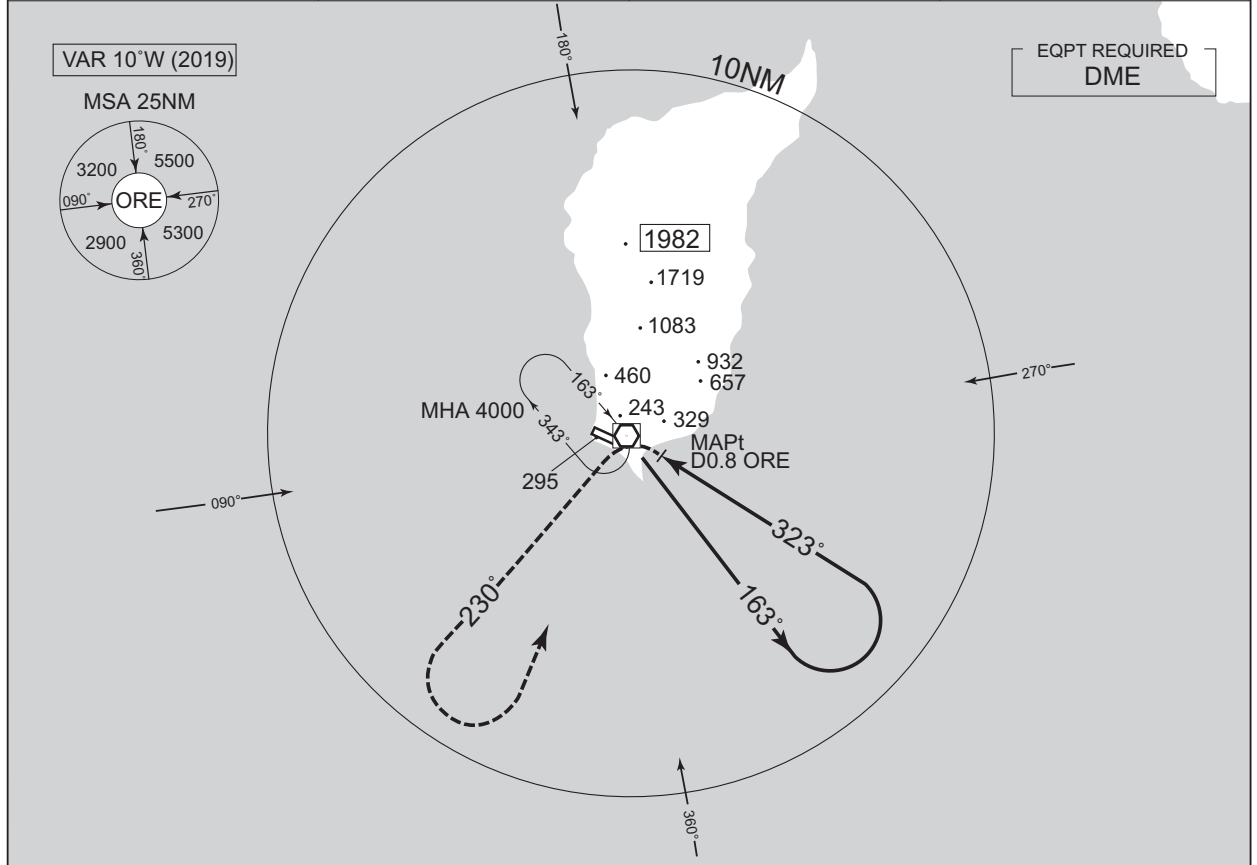
CHANGE : TAKE OFF MINIMA deleted.

INSTRUMENT APPROACH CHART

RJEO / OKUSHIRI

VOR RWY31

SAPPORO CONTROL 119.3 – 276.5 134.25 – 260.4	OKUSHIRI VOR/DME 109.85 ORE CH-35Y 42°04'13"N / 139°26'36"E	OKUSHIRI REMOTE 122.7	NO RADAR
--	--	--------------------------	----------



**MISSED APPROACH** Remain within ORE 10.0DME

Turn left, climb to 3000FT or above via ORE R230, turn left direct to ORE VOR/DME within ORE 10.0DME and hold at 4000FT.  
Contact OKUSHIRI REMOTE.

DME to ORE      0.8    1.4

MINIMA		THR elev. 141	AD elev. 161	
CAT			CIRCLING	
	MDA(H)	CMV	MDA(H)	VIS
A	600 (459)	1500	600 (439)	1600
B			620 (459)	
C		2000		2400
D	-	-	-	-

CHANGE : VAR,MSA

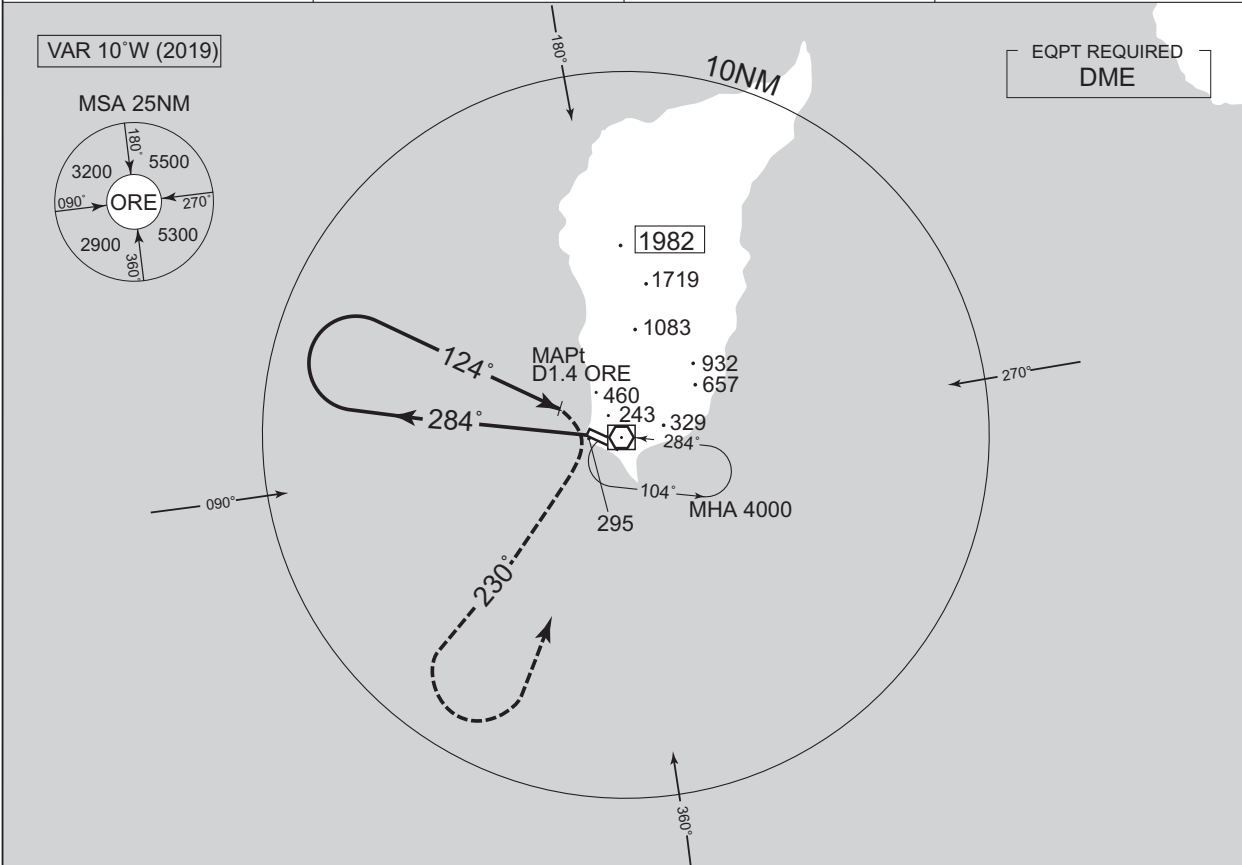
Circling to SOUTH side of RWY only.

INSTRUMENT APPROACH CHART

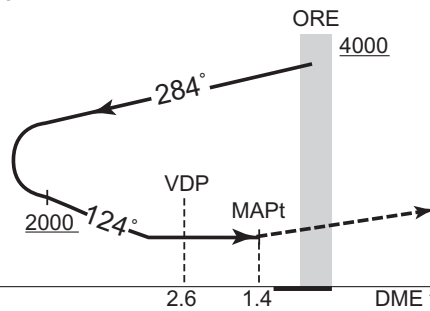
RJEO / OKUSHIRI

VOR RWY13

SAPPORO CONTROL 119.3 – 276.5 134.25 – 260.4	OKUSHIRI VOR/DME 109.85 ORE CH-35Y 42°04'13"N / 139°26'36"E	OKUSHIRI REMOTE 122.7	NO RADAR
--	--	--------------------------	----------



Remain within ORE 10.0DME



**MISSED APPROACH**  
Turn right, climb to 3000FT or above via ORE R230, turn left direct to ORE VOR/DME within ORE 10.0DME and hold at 4000FT.  
Contact OKUSHIRI REMOTE.

MINIMA		THR elev. 180	AD elev. 161	
CAT			CIRCLING	
	MDA(H)	CMV	MDA(H)	VIS
A	760 (599)	1500	760 (599)	1600
B		2000		2400
C	-	-	-	-
D	-	-	-	-

Circling to SOUTH side of RWY only.

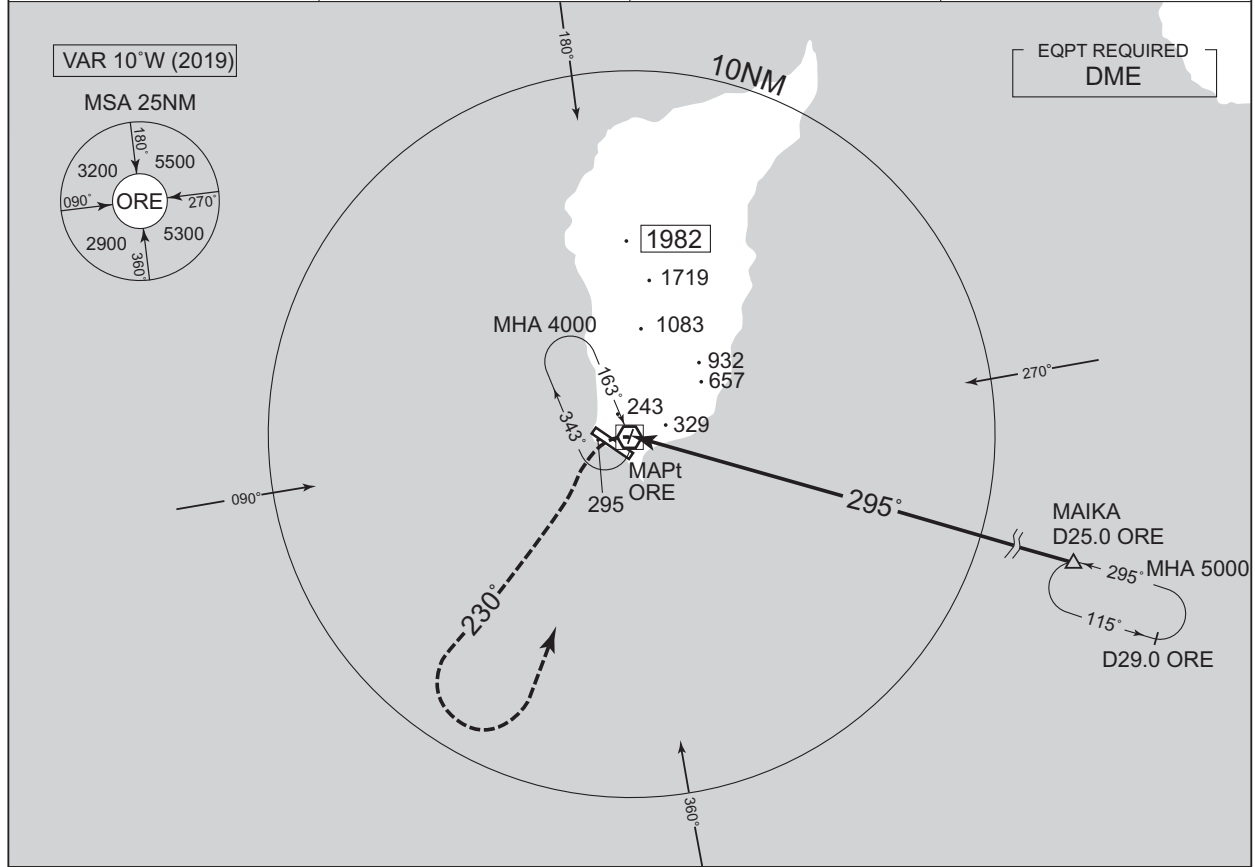
CHANGE : DME to ORE(VDP)

INSTRUMENT APPROACH CHART

RJEO / OKUSHIRI

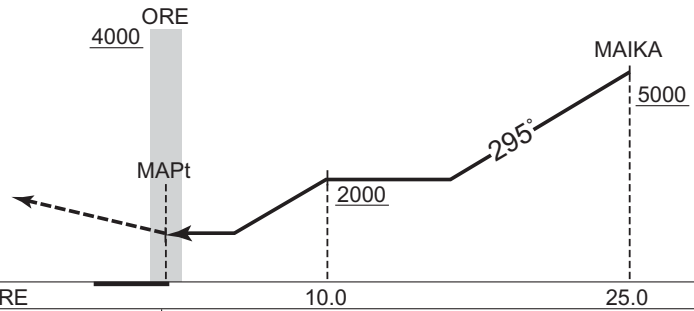
VOR A

<p>SAPPORO CONTROL 119.3 – 276.5 134.25 – 260.4</p>	<p>OKUSHIRI VOR/DME 109.85 ORE CH-35Y 42°04'13"N / 139°26'36"E</p>	<p>OKUSHIRI REMOTE 122.7</p>	<p>NO RADAR</p>
---	--	----------------------------------	-----------------



MISSED APPROACH

Turn left, climb to 3000FT or above via ORE R230, turn left direct to ORE VOR/DME within ORE 10.0DME and hold at 4000FT. Contact OKUSHIRI REMOTE.



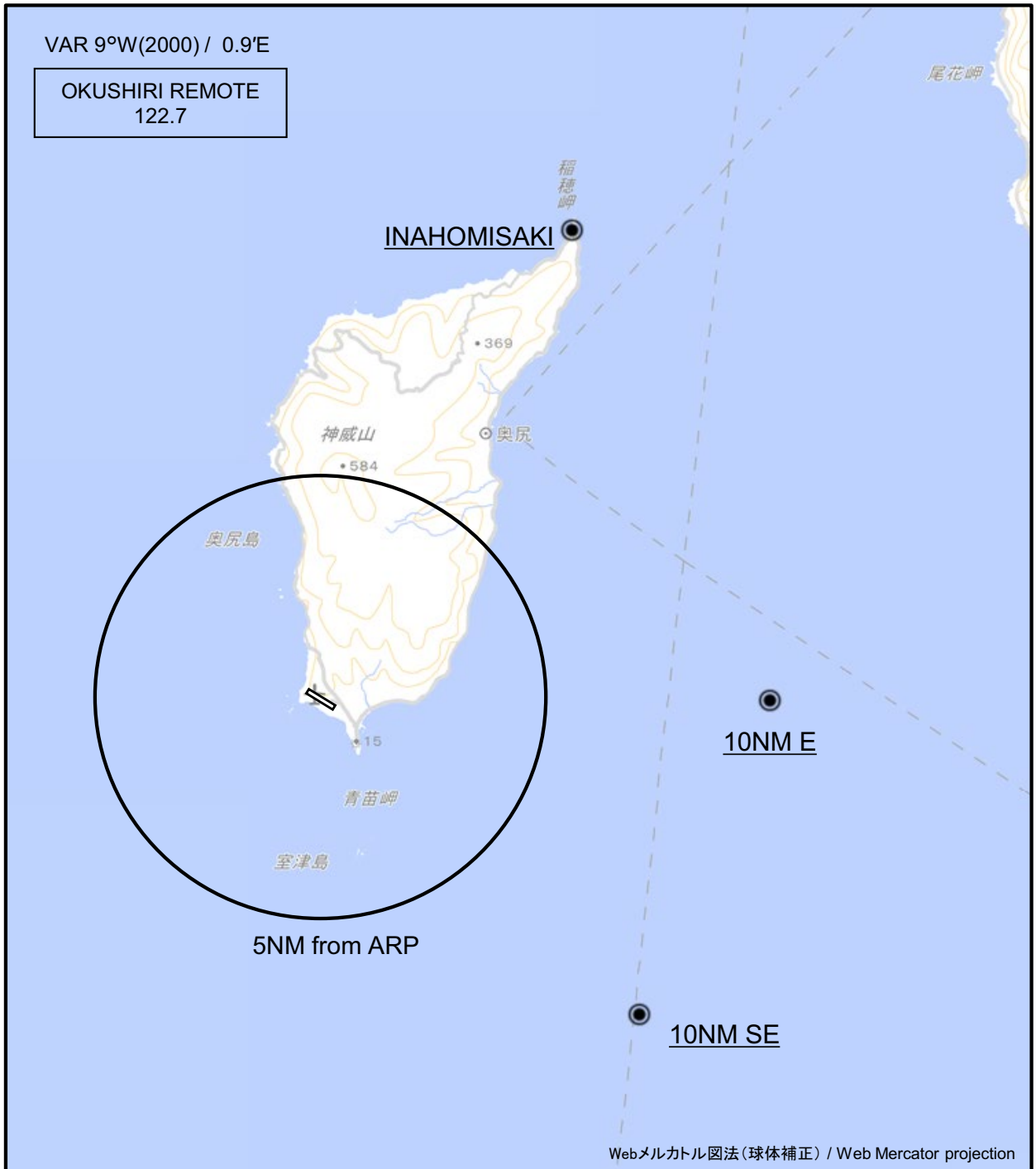
MINIMA		AD elev. 161
CAT	CIRCLING	
	MDA(H)	VIS
A	960 (799)	1600
B		2400
C	-	-
D		-

CHANGE : VAR,MSA

Circling to SOUTH side of RWY only.

RJEO / OKUSHIRI

Visual REP



※図中に標高を示す数字がある場合、単位はメートル(m)である。The unit of measurement used to express elevation is meter(m).

CHANGE : Map updated. BRG/DIST from ARP.

Call sign	BRG / DIST from ARP	Remarks
稲穂岬 Inahomisaki	028°T / 12.0NM	灯台 Lighthouse
10NM E	090°T / 10.0NM	海上 Over the sea
10NM SE	135°T / 10.0NM	海上 Over the sea

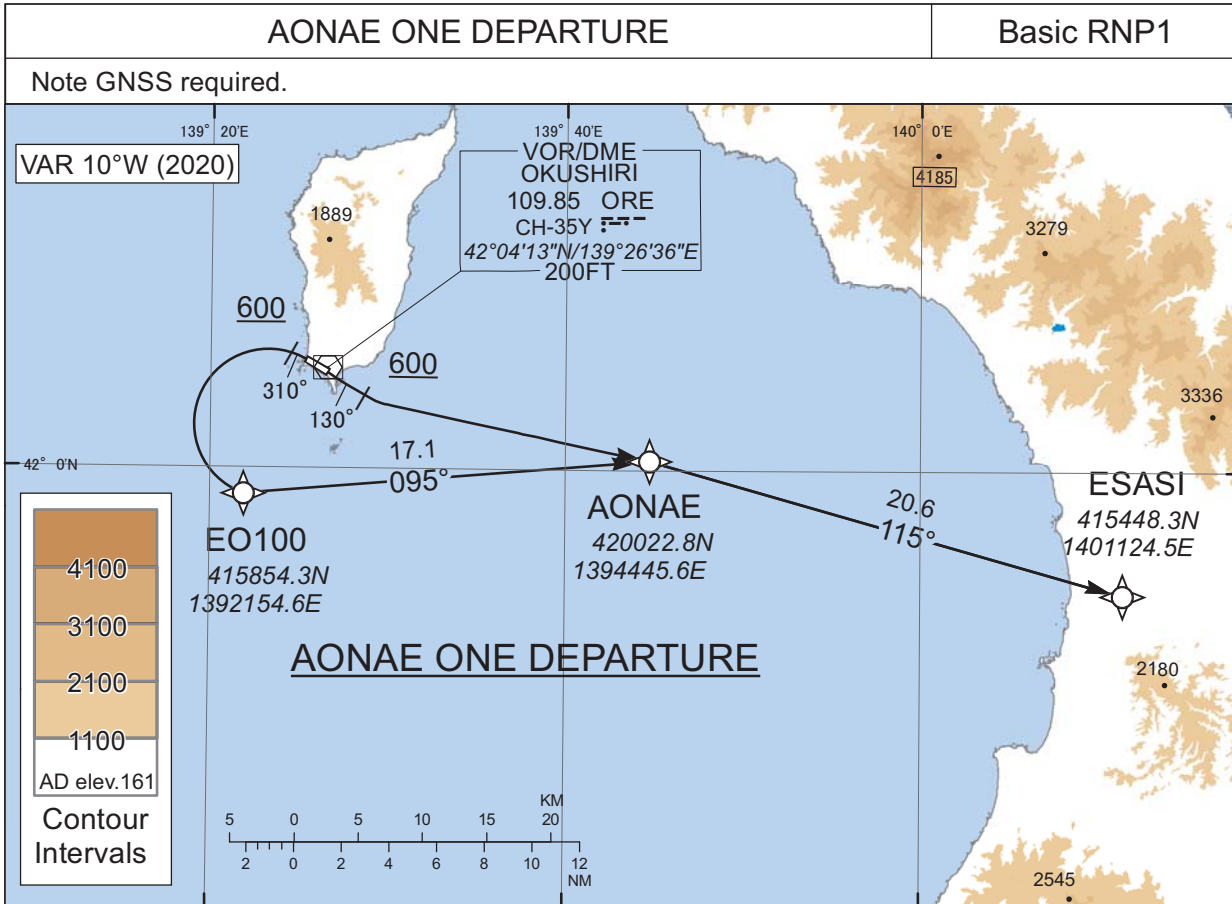
**INTENTIONALLY LEFT BLANK**



STANDARD DEPARTURE CHART - INSTRUMENT

RJEO / OKUSHIRI

RNAV SID



**AONAE ONE DEPARTURE**

RWY13: Climb on HDG 130° at or above 600FT, turn left direct to AONAE, to ESASI.  
RWY31: Climb on HDG 310° at or above 600FT, turn left direct to EO100, to AONAE, to ESASI.

Note RWY31: 4.5% climb gradient required up to 600FT.  
OBST ALT 209FT located at 0.1NM 354°FM end of RWY31

**RWY13**

Serial Number	Path Descriptor	Waypoint Identifier	Fly Over	Course °M(°T)	Magnetic Variation	Distance (NM)	Turn Direction	Altitude (FT)	Speed (KIAS)	Vertical Angle	Navigation Specification
001	VA	-	-	130 (120.3)	-9.8	-	-	+600	-	-	Basic RNP1
002	DF	AONAE	-	-	-9.8	-	L	-	-	-	Basic RNP1
003	TF	ESASI	-	115 (105.6)	-9.8	20.6	-	-	-	-	Basic RNP1

**RWY31**

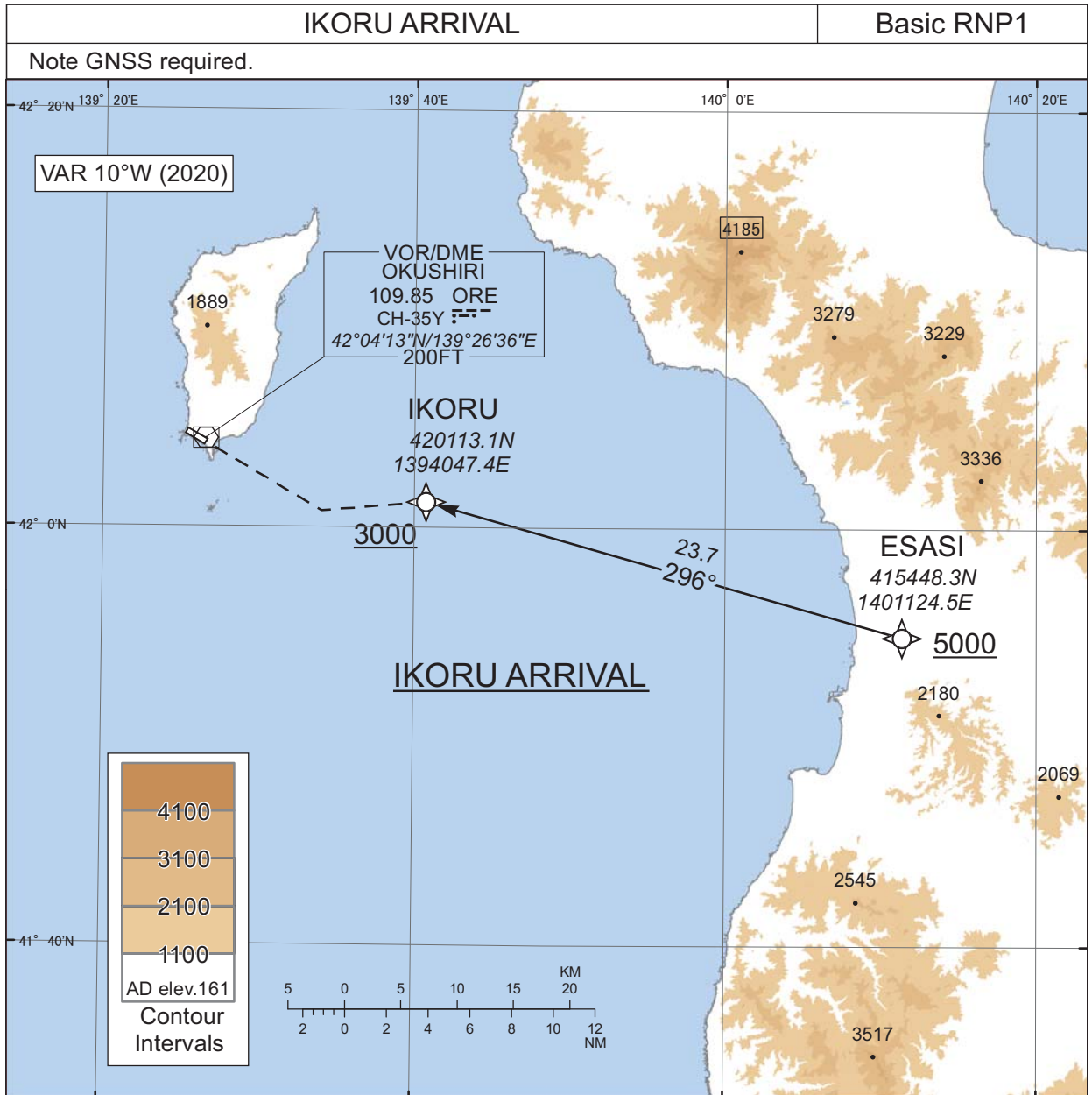
Serial Number	Path Descriptor	Waypoint Identifier	Fly Over	Course °M(°T)	Magnetic Variation	Distance (NM)	Turn Direction	Altitude (FT)	Speed (KIAS)	Vertical Angle	Navigation Specification
001	VA	-	-	310 (300.3)	-9.8	-	-	+600	-	-	Basic RNP1
002	DF	EO100	-	-	-9.8	-	L	-	-	-	Basic RNP1
003	TF	AONAE	-	095 (084.9)	-9.8	17.1	-	-	-	-	Basic RNP1
004	TF	ESASI	-	115 (105.6)	-9.8	20.6	-	-	-	-	Basic RNP1

CHANGE : New PROC

STANDARD ARRIVAL CHART - INSTRUMENT

RJEO / OKUSHIRI

RNAV STAR RWY31



IKORU ARRIVAL

From ESASI at or above 5000FT, to IKORU at or above 3000FT.

CHANGE : New PROC

Serial Number	Path Descriptor	Waypoint Identifier	Fly Over	Course °M(°T)	Magnetic Variation	Distance (NM)	Turn Direction	Altitude (FT)	Speed (KIAS)	Vertical Angle	Navigation Specification
001	IF	ESASI	-	-	-9.8	-	-	+5000	-	-	Basic RNP1
002	TF	IKORU	-	296 (285.9)	-9.8	23.7	-	+3000	-	-	Basic RNP1

**INTENTIONALLY LEFT BLANK**

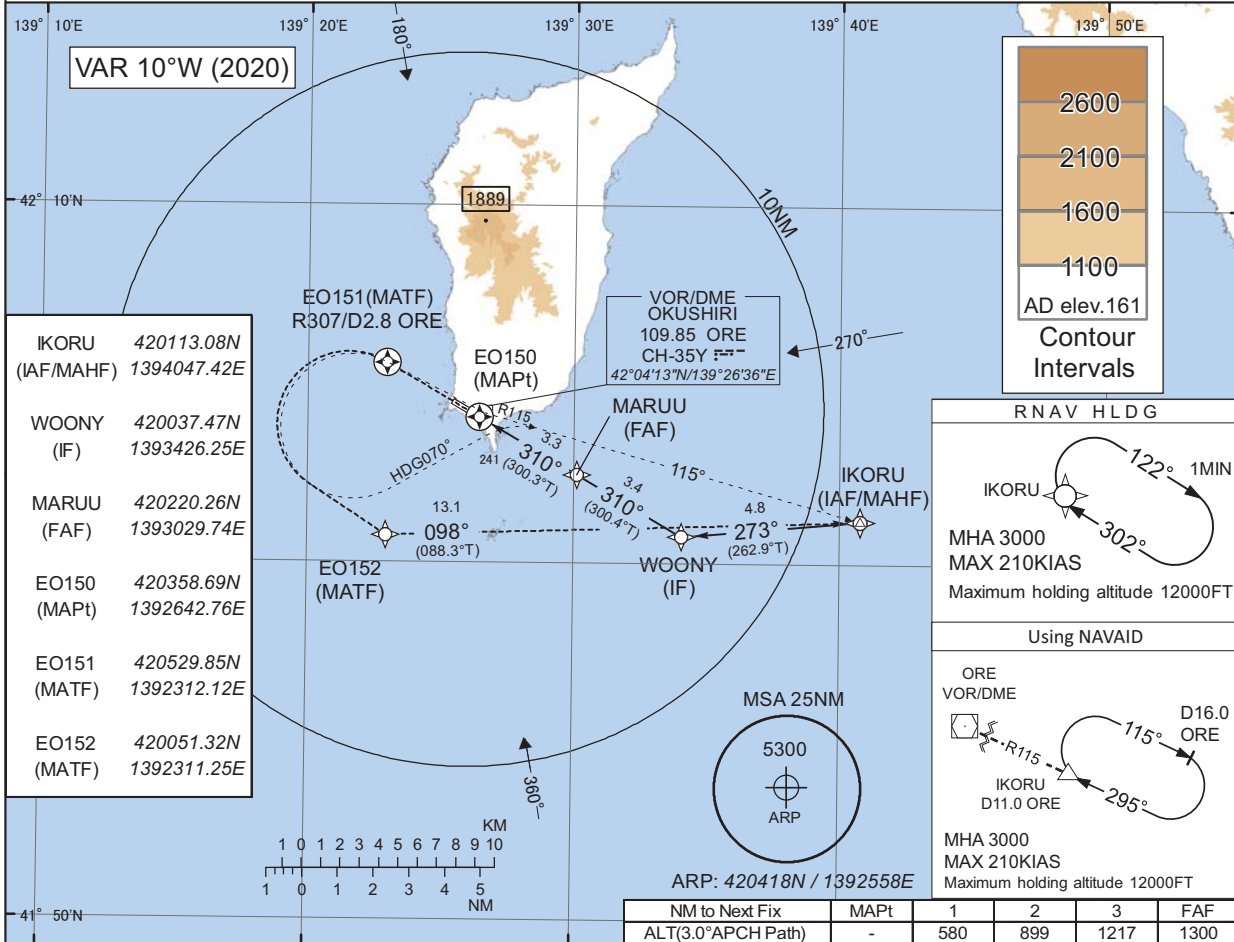
INSTRUMENT APPROACH CHART

RJEO / OKUSHIRI

RNAV(GNSS) RWY31

SAPPORO CONTROL 119.3 - 276.5 134.25 - 260.4	1. DME/DME RNP0.3 not authorized. 2. RNP0.3 required. 3. GNSS required.	OKUSHIRI REMOTE 122.7	NO RADAR
--	---	--------------------------	----------

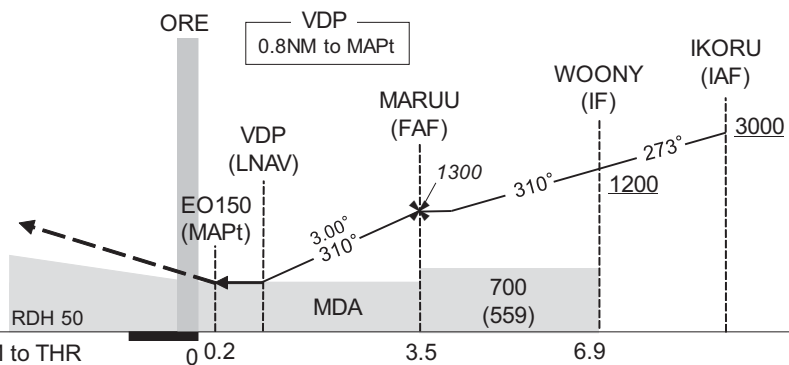
Baro-VNAV not authorized below -15°C



MISSED APPROACH

Direct to EO151, turn left direct to EO152, to IKORU and hold at 3000FT. Contact OKUSHIRI REMOTE.

(For using VOR/DME)  
Climb via ORE R307 to ORE 2.8DME, turn left HDG070° to intercept and proceed via ORE R115 to IKORU and hold at 3000FT. Contact OKUSHIRI REMOTE.



MINIMA	THR elev. 141	AD elev. 161				
CAT	LNAV/VNAV		LNAV		CIRCLING	
	DA(H)	CMV	MDA(H)	CMV	MDA(H)	VIS
A	490(349)	1500	490(349)	1500	600(439)	1600
B		1800		1800	620(459)	
C	-	-	-	-	-	2400
D	-	-	-	-	-	-

Circling to SOUTH side of RWY only.

CHANGE : New PROC