

## AD 2 AERODROMES

## RJDB AD 2.1 AERODROME LOCATION INDICATOR AND NAME

## RJDB - IKI

## RJDB AD 2.2 AERODROME GEOGRAPHICAL AND ADMINISTRATIVE DATA

1	ARP coordinates and site at AD	334457N/1294709E APRX 200m SE of AP administration office
2	Direction and distance from (city)	33nm WNW FUKUOKA
3	Elevation/ Reference temperature	41ft / 30°C (2003-2007)
4	Geoid undulation at AD ELEV PSN	100ft
5	MAG VAR/ Annual change	7°W(2009) / 2.5°W
6	AD Administration, address, telephone, telefax, telex, AFS, e-mail and/or Web-site addresses	Iki Airport Administration Office, Nagasaki Prefectural Government 1725 Ishidachoutsutsukihigashi-fure, Iki-city, Nagasaki, 811-5203 JAPAN Tel: 0920-44-5167 e-mail: s13070@pref.nagasaki.lg.jp
7	Types of traffic permitted(IFR/ VFR)	IFR/VFR
8	Remarks	Nil

## RJDB AD 2.3 OPERATIONAL HOURS

1	AD Administration	2300 - 1000
2	Customs and immigration	On request Customs: 0920-52-1112 Immigration: 092-262-2373
3	Health and sanitation	Quarantine(human): On request(095-826-8081) Quarantine(animal, plant): Nil
4	AIS Briefing Office	Nil
5	ATS Reporting Office(ARO)	Nil
6	MET Briefing Office	H24 (FUKUOKA)
7	ATS	ATS: 2300 - 1000 REMARKS: Airport Remote Mobile communication Service provided by Fukuoka FSC
8	Fuelling	Nil
9	Handling	Nil
10	Security	2300 - 1000
11	De-icing	Nil
12	Remarks	Nil

**RJDB AD 2.4 HANDLING SERVICES AND FACILITIES**

1	Cargo-handling facilities	Nil
2	Fuel/ oil types	Nil
3	Fuelling facilities/ capacity	Nil
4	De-icing facilities	Nil
5	Hangar space for visiting aircraft	Nil
6	Repair facilities for visiting aircraft	Nil
7	Remarks	Nil

**RJDB AD 2.5 PASSENGER FACILITIES**

1	Hotels	In Iki city 11km
2	Restaurants	In Iki city 11km
3	Transportation	Busses and Taxis
4	Medical facilities	In Iki city 11km
5	Bank and Post Office	In Iki city 11km
6	Tourist Office	In Iki city 11km
7	Remarks	Nil

**RJDB AD 2.6 RESCUE AND FIRE FIGHTING SERVICES**

1	AD category for fire fighting	CAT 5
2	Rescue equipment	Chemical fire fighting truck x 1
3	Capability for removal of disabled aircraft	Nil
4	Remarks	Nil

**RJDB AD 2.7 SEASONAL AVAILABILITY-CLEARING**

1	Types of clearing equipment	Not AVBL
2	Clearance priorities	Nil
3	Remarks	Nil

**RJDB AD 2.8 APRONS, TAXIWAYS AND CHECK LOCATIONS DATA**

1	Apron surface and strength	Surface: Asphalt Strength : PCN 14/F/C/Y/T
2	Taxiway width, surface and strength	Width: 18m Surface: Asphalt Strength : PCN 14/F/C/Y/T
3	ACL and elevation	Not Available
4	VOR checkpoints	Not Available
5	INS checkpoints	(Spot NR) 1. 334500.60N,1294703.91E 2. 334458.94N,1294703.63E
6	Remarks	Nil

**RJDB AD 2.9 SURFACE MOVEMENT GUIDANCE AND CONTROL SYSTEM AND MARKINGS**

1	Use of aircraft stand ID signs, TWY guide lines and Visual docking/ parking guidance system of aircraft stands	Nil
2	RWY and TWY markings and LGT	RWY: RWY02/20 (Marking) RWY designation, RWY CL, RWY THR, Aiming point, TDZ, RWY side stripe (LGT) REDL, RTHL, RENL, RWY DIST marker LGT  TWY: (Marking) TWY CL, TWY side stripe (LGT) TWY edge LGT
3	Stop bars	Nil
4	Remarks	(LGT) Apron flood LGT

**RJDB AD 2.10 AERODROME OBSTACLES**

RWY/Area affected	Obstacle type	Coordinates	Elevation	Markings/ LGT	Remarks
Nil					

## RJDB AD 2.11 METEOROLOGICAL INFORMATION PROVIDED

1	Associated MET Office	FUKUOKA
2	Hours of service MET Office outside hours	H24 (FUKUOKA)
3	Office responsible for TAF preparation Periods of validity	Nil
4	Trend forecast Interval of issuance	Nil
5	Briefing/ consultation provided	Briefing is available upon inquiry at FUKUOKA.
6	Flight documentation Language(s) used	C En
7	Charts and other information available for briefing or consultation	S <sub>6</sub> , U <sub>85</sub> , U <sub>7</sub> , U <sub>5</sub> , U <sub>3</sub> , U <sub>25</sub> , U <sub>2</sub> /T <sub>r</sub> , P <sub>S</sub> , P <sub>5</sub> , P <sub>3</sub> , P <sub>25</sub> , P <sub>SWE</sub> , P <sub>SWF</sub> , P <sub>SWG</sub> , P <sub>SWI</sub> , P <sub>SWM</sub> , P <sub>SW</sub> (domestic), E, C, W <sub>E</sub> , W <sub>F</sub> , W <sub>G</sub> , W <sub>I</sub> , W, N
8	Supplementary equipment available for providing information	Nil
9	ATS units provided with information	REMOTE
10	Additional information(limitation of ser- vice, etc.)	Nil

## RJDB AD 2.12 RUNWAY PHYSICAL CHARACTERISTICS

Designations RWY NR	TRUE BRG	Dimensions of RWY(M)	Strength(PCN) and surface of RWY	THR coordinates THR geoid undulation	THR elevation and highest elevation of TDZ of precision APP RWY
1	2	3	4	5	6
02	016.06°	1200×30	PCN 13/F/C/Y/T	334437.31N/1294704.70E 123ft	THR ELEV: 23ft
20	196.06°	1200×30	Asphalt Concrete	334515.74N/1294712.29E 152ft	THR ELEV: 52ft
Slope of RWY	Strip Dimensions(M)	RESA (Overrun) Dimensions(M)	Remarks		
7	10	11	14		
See AD 2.24 AD Chart	1320×90 1320×90	10 × (MNM:10 MAX:120)* 35 × (MNM:70 MAX:90)* *For detail, ask airport administrator	RWY grooving 1200m X 20m		

**RJDB AD 2.13 DECLARED DISTANCES**

RWY Designator	TORA (m)	TODA (m)	ASDA (m)	LDA (m)	Remarks
1	2	3	4	5	6
02	1200	1200	1200	1200	Nil
20	1200	1200	1200	1200	Nil

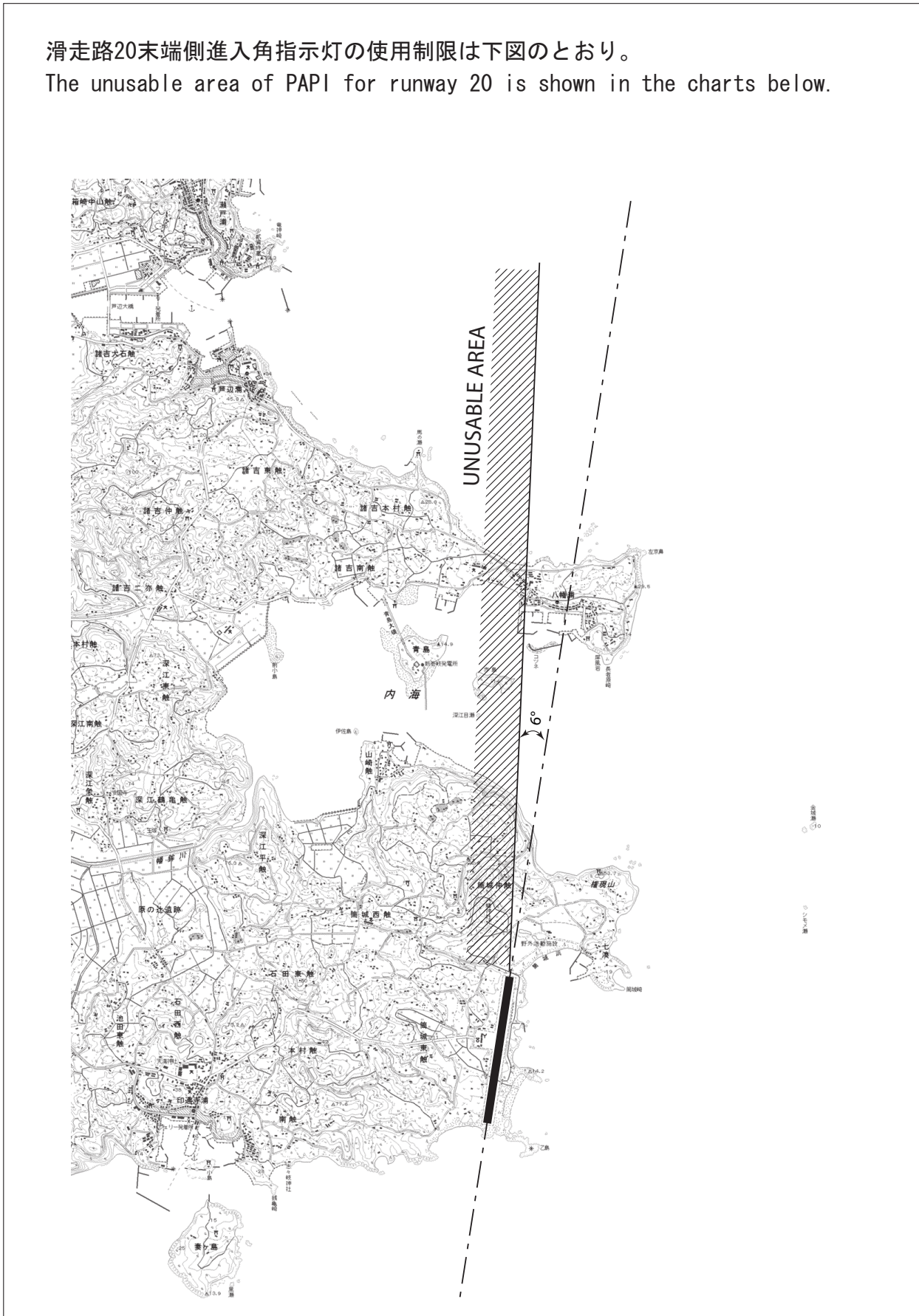
**RJDB AD 2.14 APPROACH AND RUNWAY LIGHTING**

RWY Designator	APCH LGT type LEN INTST	RTHL Color WBAR	PAPI (VASIS) Angle DIST FM THR MEHT	RTZL LEN	RCLL LEN Spacing Color INTST	REDL LEN Spacing Color INTST	RENL Color WBAR	STWL LEN Color
1	2	3	4	5	6	7	8	9
02	Nil	Green	PAPI 3.0° /LEFT 224.2m 45ft	Nil	Nil	1200m 60m Coded color (White/Yellow) LIH	Red	Nil (*1)
20	Nil	Green	PAPI 3.0° /LEFT 302m 45ft	Nil	Nil	1200m 60m Coded color (White/Yellow) LIH	Red	Nil (*1)
Remarks								
10								
Overrun area edge LGT (LEN:60m Color: Red) RWY THR ID LGT for RWY 02/20 THR (Color: White)								

The unusable area of PAPI for runway 20 is shown in the charts below.

滑走路20末端側進入角指示灯の使用制限は下図のとおり。

The unusable area of PAPI for runway 20 is shown in the charts below.



**RJDB AD 2.15 OTHER LIGHTING, SECONDARY POWER SUPPLY**

1	ABN/ IBN location, characteristics and hours of operation	ABN:334459N/1294701E, White/Green EV4.3sec, HO
2	LDI location and LGT Anemometer location and LGT	LDI: Nil Anemometer : 490m from RWY 20 THR
3	TWY edge and centerline lighting	TWY edge LGT: Blue
4	Secondary power supply/ switch-over time	Nil
5	Remarks	WDI LGT

**RJDB AD 2.16 HELICOPTER LANDING AREA**

Nil
-----

**RJDB AD 2.17 ATS AIRSPACE**

Designation and lateral limits		Vertical limits (ft)	Airspace classification	ATS unit call sign Language	Remarks
1		2	3	4	6
Iki Information Zone	Area within a radius of 5nm(9km) of Iki ARP	3,000 or below	E	Fukuoka FSC En	

**RJDB AD 2.18 ATS COMMUNICATION FACILITIES**

Service designation	Call sign	Frequency	Hours of operation	Remarks
1	2	3	4	5
A/G	IKI REMOTE	118.2MHz	2300 - 1000	Remote air-ground facility controlled by Fukuoka FSC

## RJDB AD 2.19 RADIO NAVIGATION AND LANDING AIDS

Type of aid (VOR declina- tion)	ID	Frequency	Hours of operation	Position of transmitting antenna coordinates	Elevation of DME transmitting antenna	Remarks
1	2	3	4	5	6	7
VOR (7°W/2008)	IKE	113.2MHz	H24	334451.04N/ 1294636.67E		
DME	IKE	1166MHz (CH-79X)	H24	334451.04N/ 1294636.67E	219ft	

## RJDB AD 2.20 LOCAL TRAFFIC REGULATIONS

## 1. Airport regulations

Nil

## 2. Taxiing to and from stands

Nil

## 3. Parking area for small aircraft(General aviation)

Nil

## 4. Parking area for helicopters

Nil

## 5. Apron - taxiing during winter conditions

Nil

## 6. Taxiing - limitations

Nil

## 7. School and training flights - technical test flights - use of runways

Nil

## 8. Helicopter traffic - limitation

Nil

## 9. Removal of disabled aircraft from runways

Nil



**RJDB AD 2.21 NOISE ABATEMENT PROCEDURES**

Nil

**RJDB AD 2.22 FLIGHT PROCEDURES**

TAKE OFF MINIMA								
	RWY	ACFT CAT	REDL & RCLL		REDL or RCLL or RCL marking		NIL (DAYTIME ONLY)	
			CEIL-RVR	CEIL-VIS	CEIL-RVR	CEIL-VIS	CEIL-RVR	CEIL-VIS
Multi-Engine ACFT with TKOF ALTN AP FILED	02	A,B	-	-	-	200'-1600m	-	200'-1600m
	20	A,B	-	-	-	200'-1600m	-	200'-1600m
OTHER	02	A,B	AVBL LDG MINIMA					
	20							

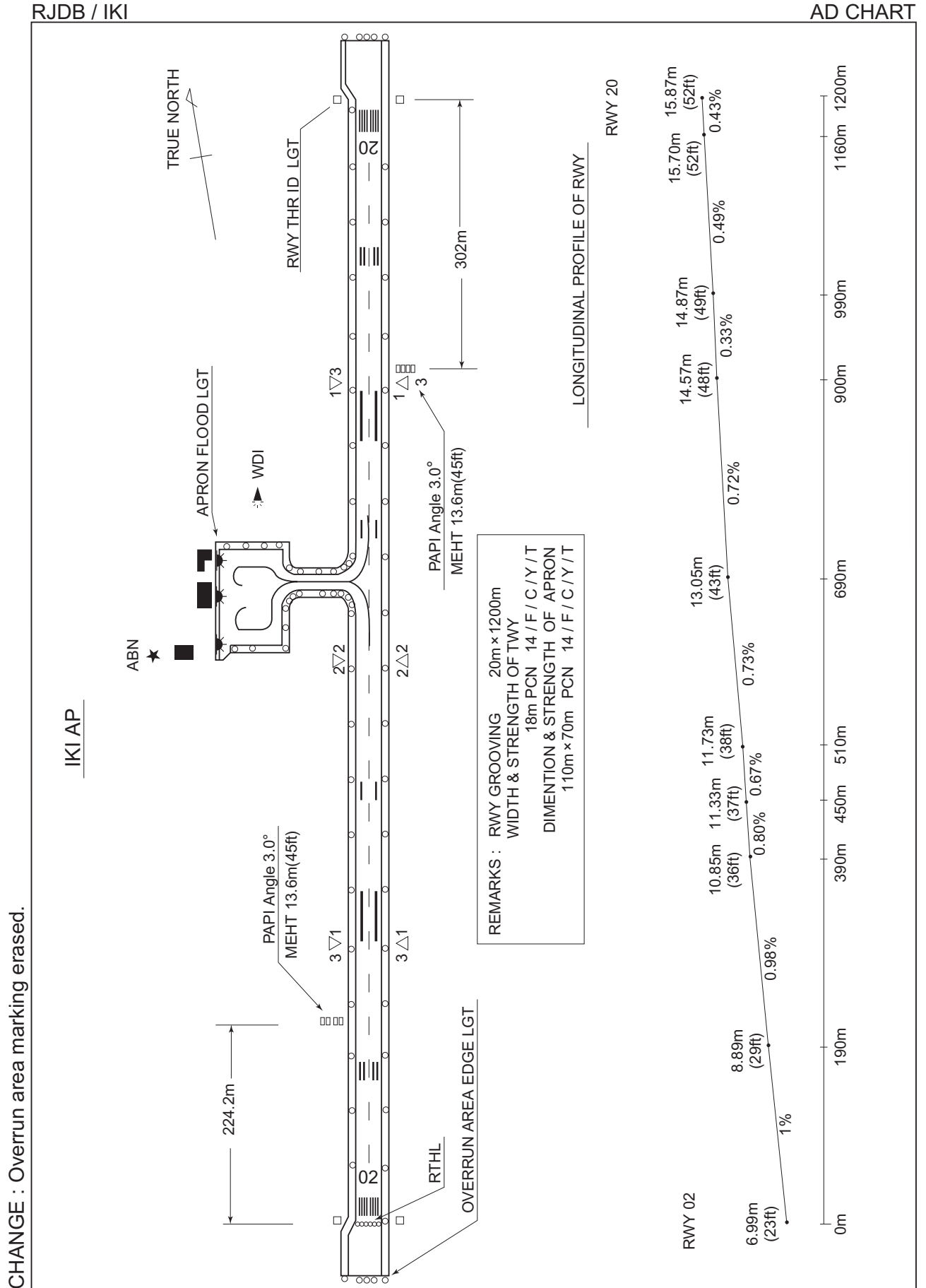
**RJDB AD 2.23 ADDITIONAL INFORMATION**

Nil

**RJDB AD 2.24 CHARTS RELATED TO AN AERODROME**

Aerodrome/Heliport Chart  
 Standard Departure Chart - Instrument  
 Instrument Approach Chart(VOR RWY02)  
 Instrument Approach Chart(VOR RWY20)  
 Other Chart (Visual REP)  
 Other Chart (LDG CHART)  
 Other Chart (MVA CHART)

**INTENTIONALLY LEFT BLANK**



CHANGE : Overrun area marking erased.

**INTENTIONALLY LEFT BLANK**

STANDARD DEPARTURE CHART - INSTRUMENT

RJDB / IKI

SID

FUKUOKA FOUR DEPARTURE

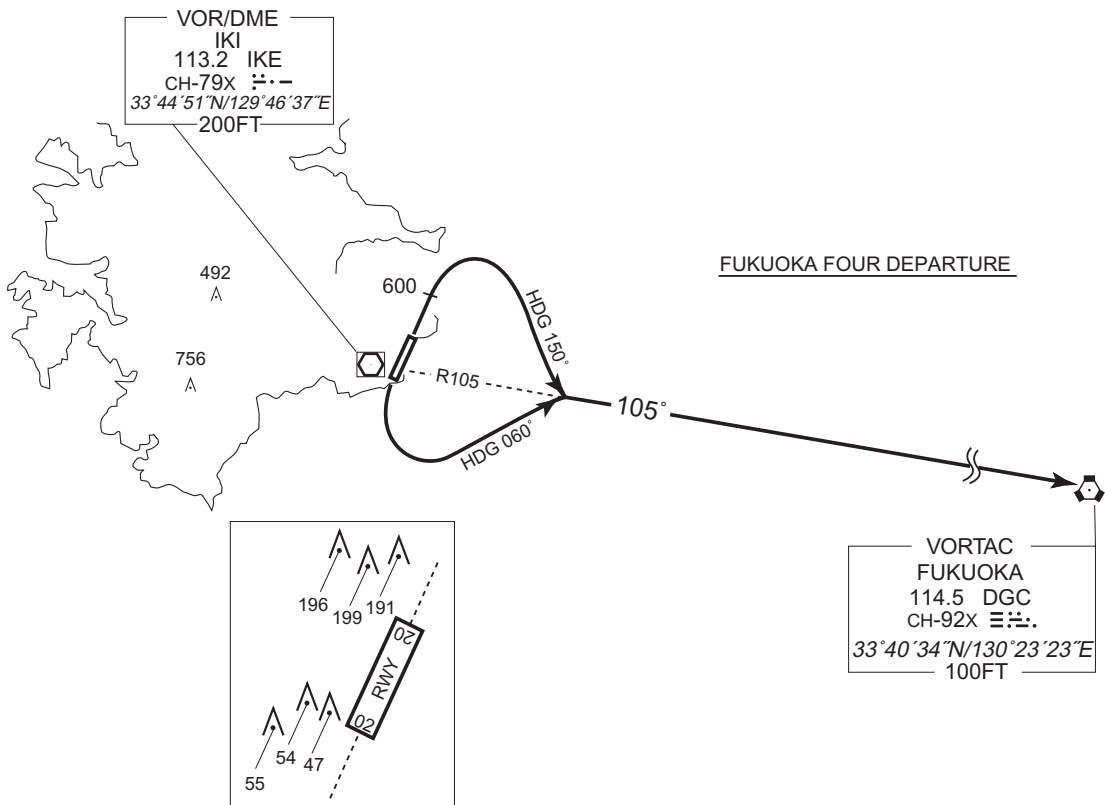
RWY 02 : Climb RWY HDG to 600FT, turn right HDG 150°...

RWY 20 : Turn left HDG 060°...

....to intercept and proceed via IKE R105 to DGC VORTAC.

Note RWY02 : 6.7% climb gradient required up to 600FT.

OBST ALT 299FT located at 0.68NM 002° FM end of RWY02.



STANDARD DEPARTURE CHART - INSTRUMENT

RJDB / IKI

SID

IKI REVERSAL THREE DEPARTURE

RWY 02 : Climb RWY HDG to 1600FT, turn right,....

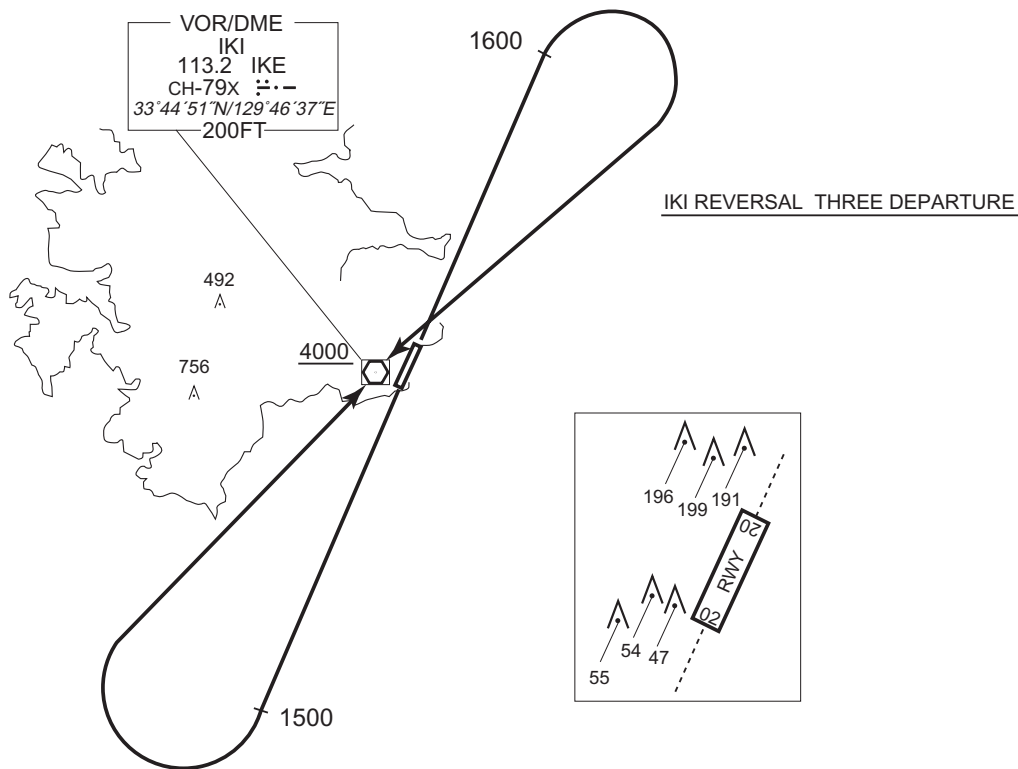
RWY 20 : Climb RWY HDG to 1500FT, turn right,....

...proceed to IKE VOR/DME.

Cross IKE VOR/DME at or above 4000FT.

Note RWY02 : 6.7% climb gradient required up to 600FT.

OBST ALT 299FT located at 0.68NM 002° FM end of RWY02.

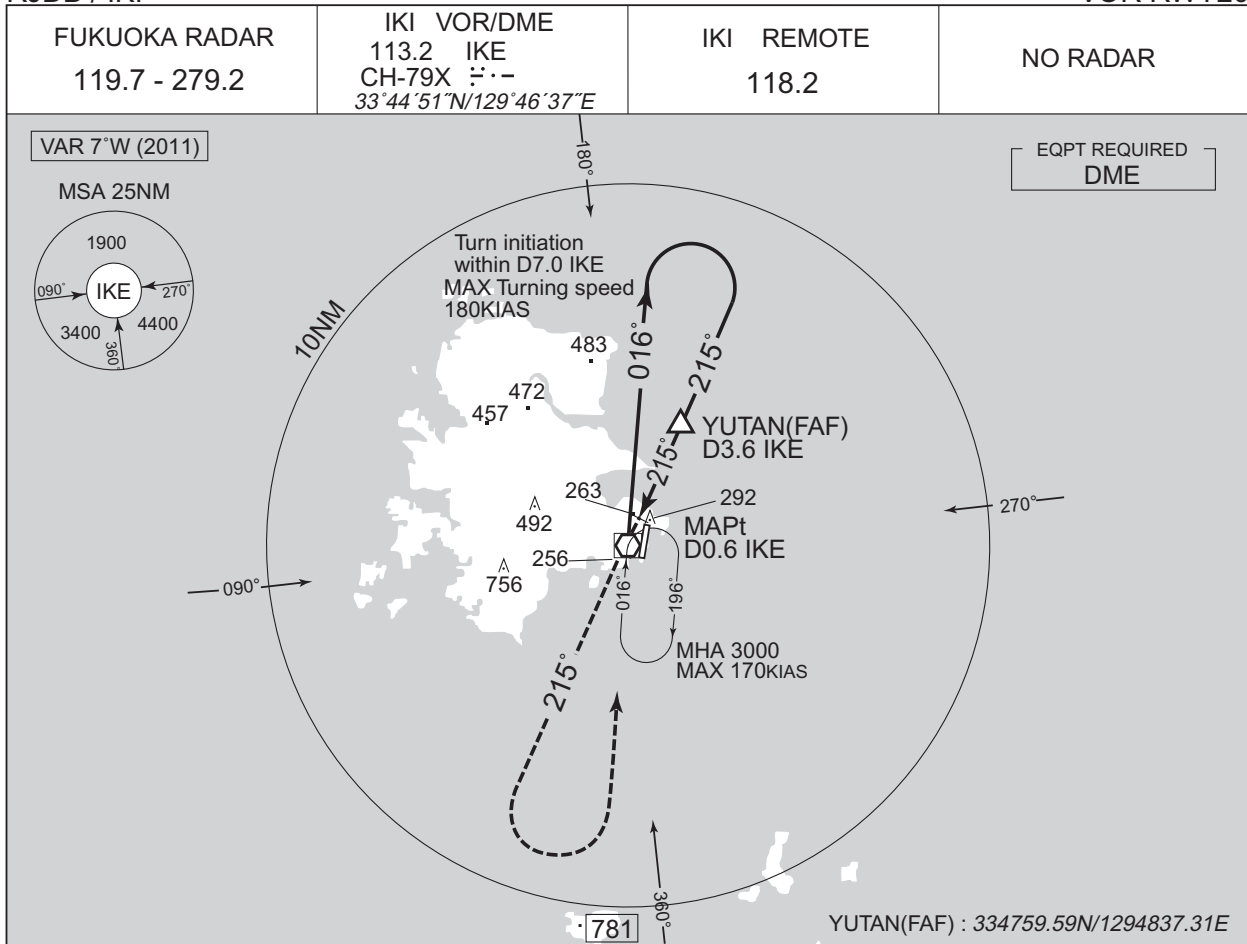


INSTRUMENT APPROACH CHART

RJDB / IKI

VOR RWY20

CHANGE : ATC callsign changed (FUKUOKA DEP → FUKUOKA RADAR). ATC FREQ changed.

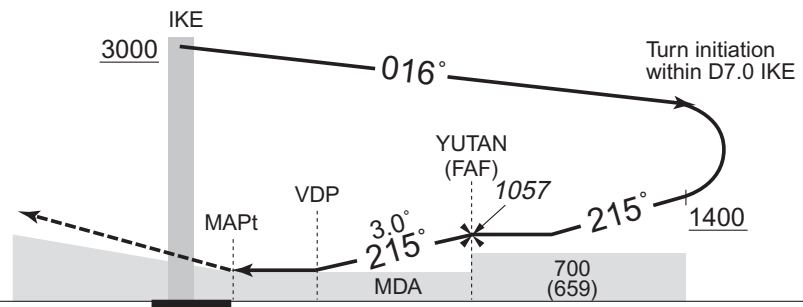


NM to IKE	MAPt	3	FAF
ALT (3.0° APCH Path)	—	881	1057

MISSED APPROACH

Climb to 1500FT via IKE R215, turn left, direct to IKE VOR/DME and hold at 3000FT. Contact FUKUOKA RADAR.

Timing not authorized for defining the MAPt.

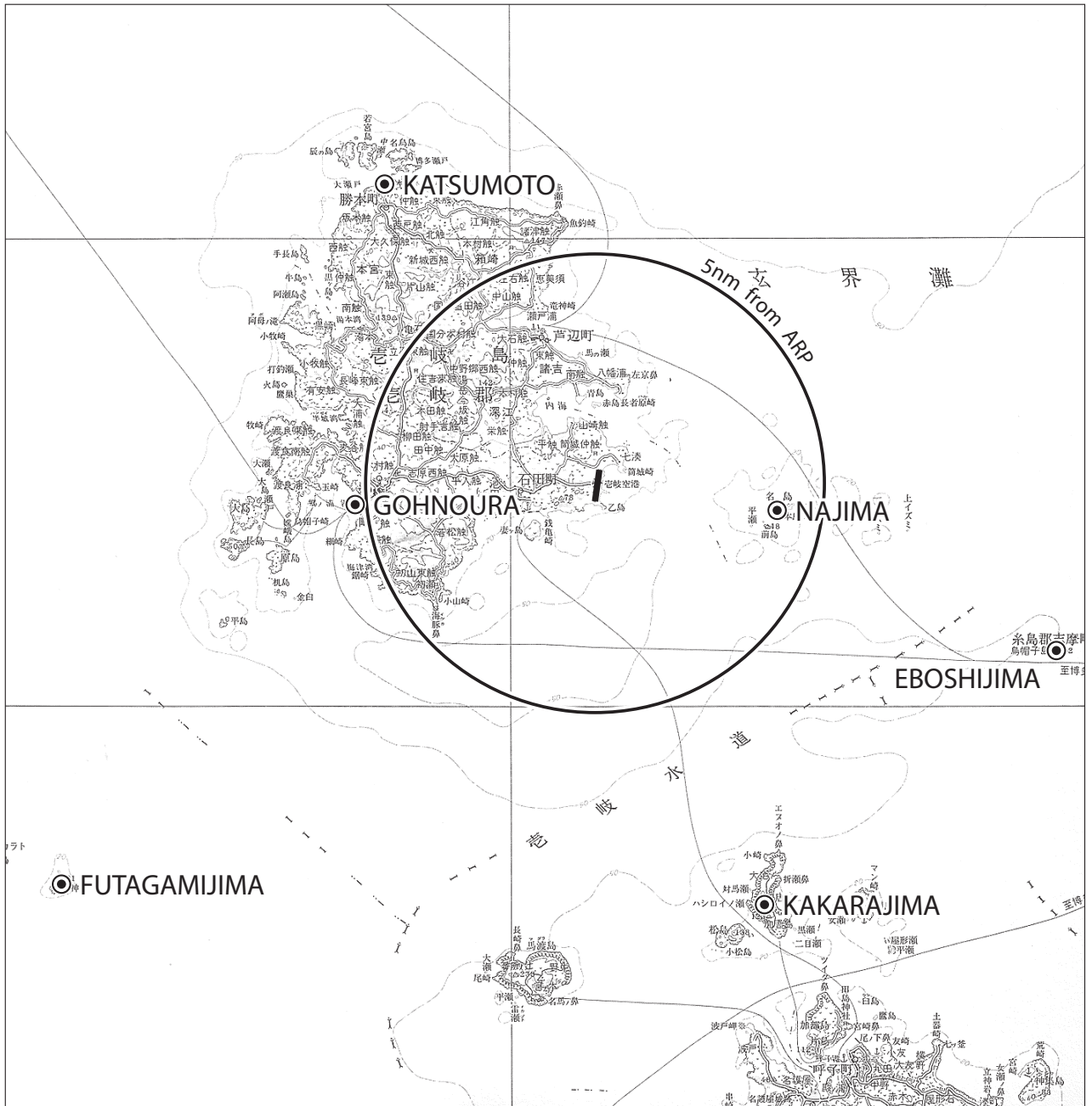


DME to IKE	0.6	2.3	3.6
NM to THR	0	1.7	3.0

MINIMA		THR elev. 52	AD elev. 41	
CAT			CIRCLING	
	MDA(H)	CMV	MDA(H)	VIS
A	610 (569)	1500	660 (619)	1600
B				
C	—	—	—	—
D	—	—	—	—

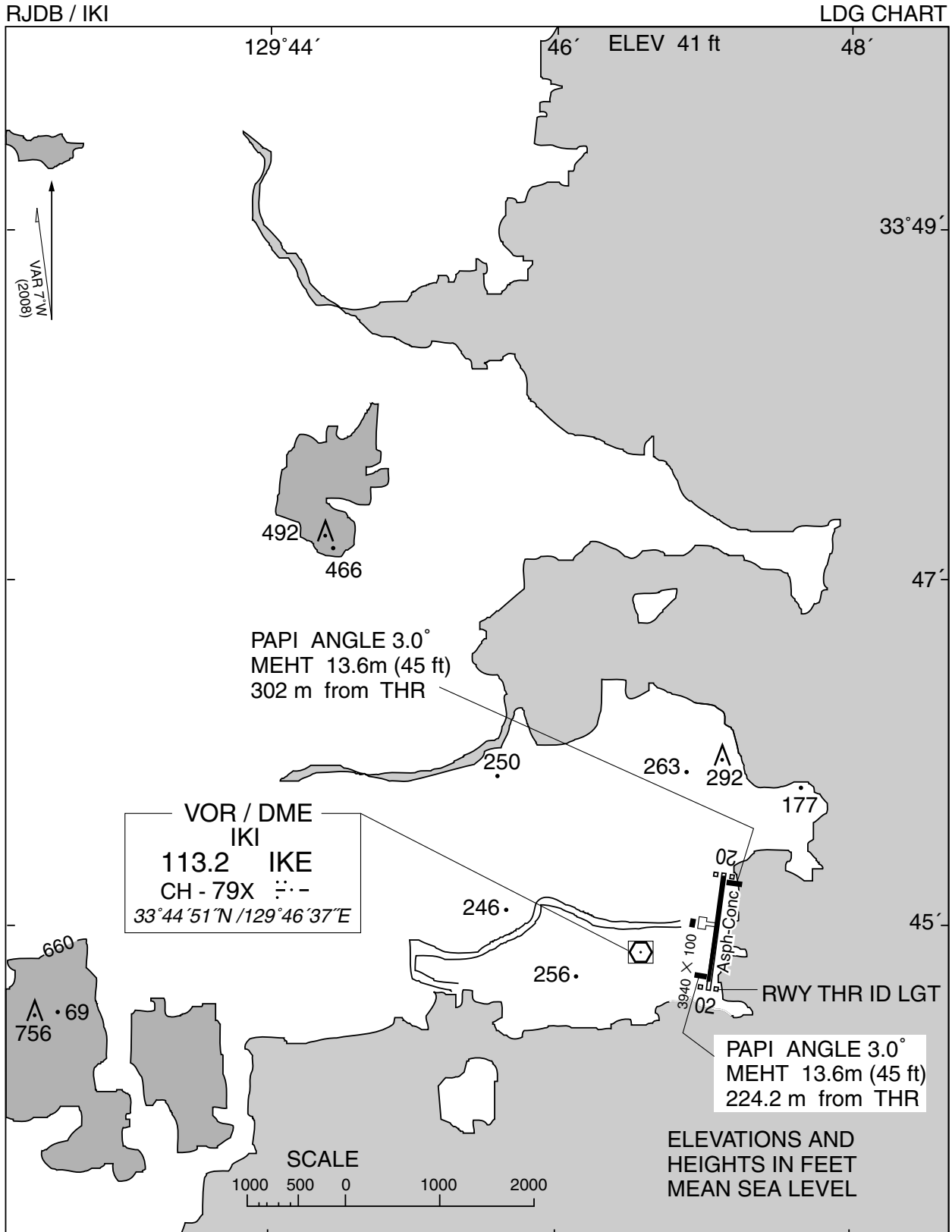
RJDB / IKI

Visual REP



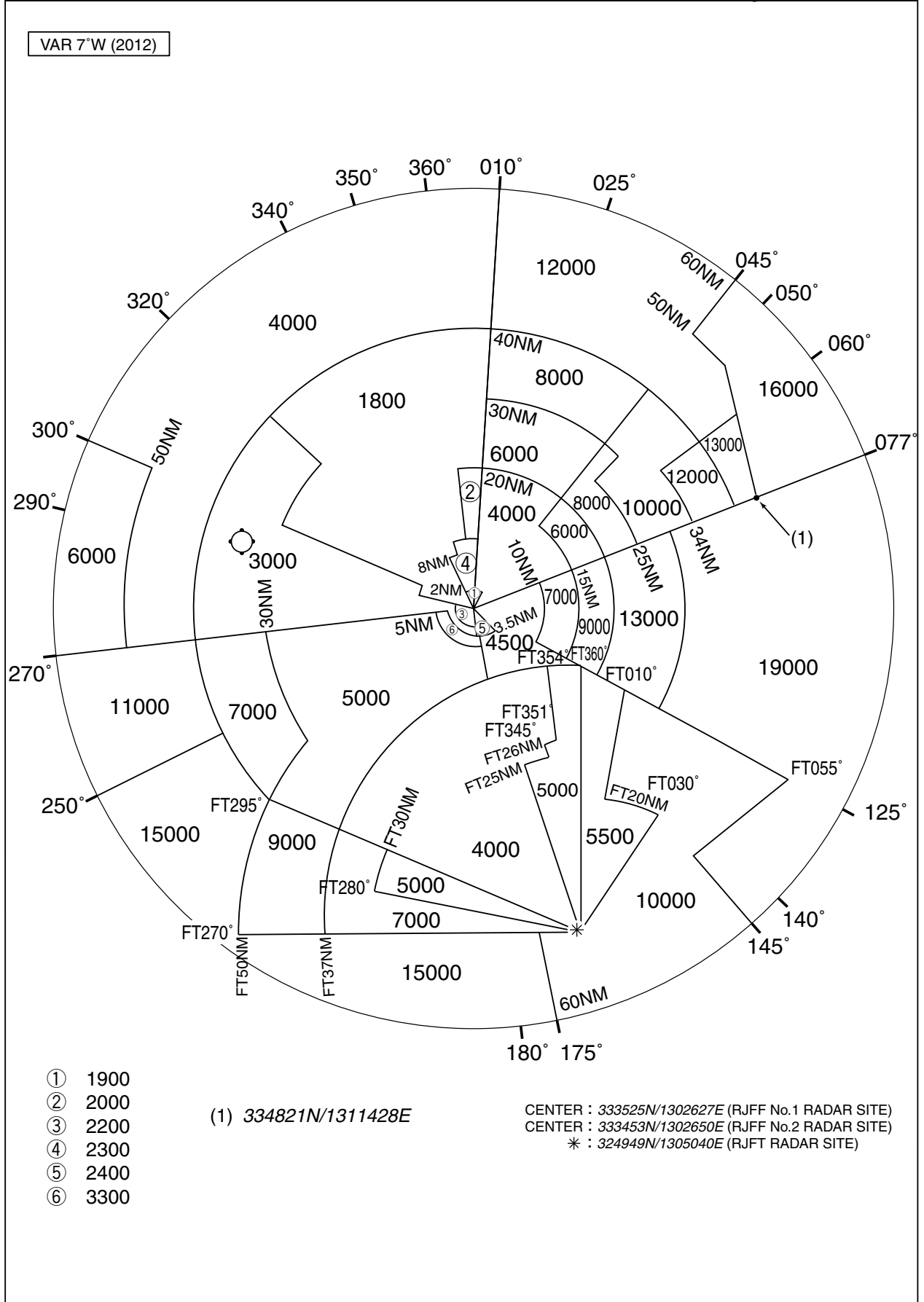
Call sign	BRG / DIST from ARP	Remarks
名 島 Najima	109°/ 4.0NM	灯台 Lighthouse
烏帽子島 Eboshijima	116°/10.5NM	灯台 Lighthouse
加唐島 Kakarajima	164°/10.0NM	灯台 Lighthouse
郷ノ浦 Gohnoura	273°/ 5.0NM	漁港 Harbor
二神島 Futagamijima	239°/14.0NM	灯台 Lighthouse
勝本 Katsumoto	329°/ 7.5NM	漁港 Harbor





RJDB / IKI

Minimum Vectoring Altitude CHART



INSTRUMENT APPROACH CHART

CHANGE : ATC callsign changed (FUKUOKA DEP → FUKUOKA RADAR). ATC FREQ changed.

RJDB / IKI	IKI VOR/DME 113.2 IKE CH-79X 33°44'51"N/129°46'37"E	IKI REMOTE 118.2	VOR RWY02 NO RADAR
------------	---	---------------------	-----------------------

VAR 7°W (2015) EQPT REQUIRED DME

MSA 25NM

SAORY(FAF) : 333955.89N/1294745.18E

NM to IKE	MAPt	2	3	4	FAF
ALT (3.0° APCH Path)	-	633	952	1270	1589

**MISSED APPROACH**

Climb to 1500FT via IKE R356, turn right, direct to IKE VOR/DME and hold at 3000FT. Contact FUKUOKA RADAR.

Timing not authorized for defining the MAPt.

DME to IKE	0.2	1.2	1.5	5.0
NM to THR	0	1.0	1.2	4.8

MINIMA	THR elev. 23	AD elev. 41		
CAT	MDA(H)		CIRCLING	
	MDA(H)	CMV	MDA(H)	VIS
A	440 (417)	1500	660 (619)	1600
B	-	-	-	-
C	-	-	-	-
D	-	-	-	-

滑走路20末端側進入角指示灯の使用制限は下図のとおり。

The unusable area of PAPI for runway 20 is shown in the charts below.

