

## AD 2 AERODROMES

## RJCW AD 2.1 AERODROME LOCATION INDICATOR AND NAME

## RJCW - WAKKANAI

## RJCW AD 2.2 AERODROME GEOGRAPHICAL AND ADMINISTRATIVE DATA

1	ARP coordinates and site at AD	452416N/1414808E 033°/600m from TWR
2	Direction and distance from (city)	10km ESE from Wakkanai city
3	Elevation/ Reference temperature	27FT / 24°C (2004-2008)
4	Geoid undulation at AD ELEV PSN	89FT
5	MAG VAR/ Annual change	10°W(2005) / 1°W
6	AD Administration, address, telephone, telefax, telex, AFS, e-mail and/or Web-site addresses	Hokkaido Airports Co.,Ltd. Wakkanai Airport Office 6744 Koetoi Wakkanai-shi in Hokkaido TEL : 0162-26-2080 FAX : 0162-26-2081 e-mail : hap-wkj-unjyo@hokkaido-airports.co.jp
7	Types of traffic permitted (IFR/ VFR)	IFR/VFR
8	Remarks	Civil Aviation Bureau, Ministry of Land, Infrastructure, Transport And Tourism Wakkanai Airport Office 6744 Koetoi Wakkanai-shi in Hokkaido TEL : 0162-27-2727  FAX : 0162-27-2730

## RJCW AD 2.3 OPERATIONAL HOURS

1	AD Administration	2330 - 0930
2	Customs and immigration	On request Customs: 0162-33-1075 Immigration: 0162-23-3269
3	Health and sanitation	Quarantine(human): On request(0162-23-4403) Quarantine(animal, plant): Nil
4	AIS Briefing Office	Nil
5	ATS Reporting Office(ARO)	Nil
6	MET Briefing Office	H24 (NEW CHITOSE)
7	ATS	2330 - 0930
8	Fuelling	Ask AD administration
9	Handling	Ask AD administration
10	Security	Ask AD administration
11	De-icing	Ask AD administration
12	Remarks	Nil

**RJCW AD 2.4 HANDLING SERVICES AND FACILITIES**

1	Cargo-handling facilities	B767-300 AVBL
2	Fuel/ oil types	Fuel : Jet A1 / Oil : Nil
3	Fuelling facilities/ capacity	Fuel Truck / 200liter/min (Pistol Nozzle)
4	De-icing facilities	Nil
5	Hangar space for visiting aircraft	Nil
6	Repair facilities for visiting aircraft	Nil
7	Remarks	Nil

**RJCW AD 2.5 PASSENGER FACILITIES**

1	Hotels	Nil
2	Restaurants	At Airport, Not continuous
3	Transportation	Busses (For scheduled Flight) and Taxis
4	Medical facilities	Hospital in Wakkanai-shi (13km from airport)
5	Bank and Post Office	Nil
6	Tourist Office	Nil
7	Remarks	Nil

**RJCW AD 2.6 RESCUE AND FIRE FIGHTING SERVICES**

1	AD category for fire fighting	CAT 8
2	Rescue equipment	Chemical fire fighting truck x 3 Water-supply truck Emergency medical equipments conveyance truck Lighting power supply truck
3	Capability for removal of disabled aircraft	B767
4	Remarks	Nil

**RJCW AD 2.7 SEASONAL AVAILABILITY-CLEARING**

1	Types of clearing equipment	Snow removal equipment: Snow sweepers x 7, Snow plows x 6, Snow blowers x 3, Salt spreader x 1, Loaders x 3 (available NOV-MAR)
2	Clearance priorities	(1) RWY, TWY, APRON(Spot NR1,2,3) (2) APRON(Spot NR4)
3	Remarks	Seasonal availability: All seasons

**RJCW AD 2.8 APRONS, TAXIWAYS AND CHECK LOCATIONS DATA**

1	Apron surface and strength	Surface : Concrete and Asphalt      Strength : PCN 61/F/C/X/T
2	Taxiway width, surface and strength	Width : 30m Surface : Asphalt      Strength : PCN 58/F/C/X/T
3	ACL and elevation	Not available
4	VOR checkpoints	Not available
5	INS checkpoints	(Spot NR)  1: 452359.19N,1414747.12E 2: 452359.89N,1414749.70E 3: 452400.48N,1414751.96E 4: 452401.01N,1414753.89E
6	Remarks	Nil

**RJCW AD 2.9 SURFACE MOVEMENT GUIDANCE AND CONTROL SYSTEM AND MARKINGS**

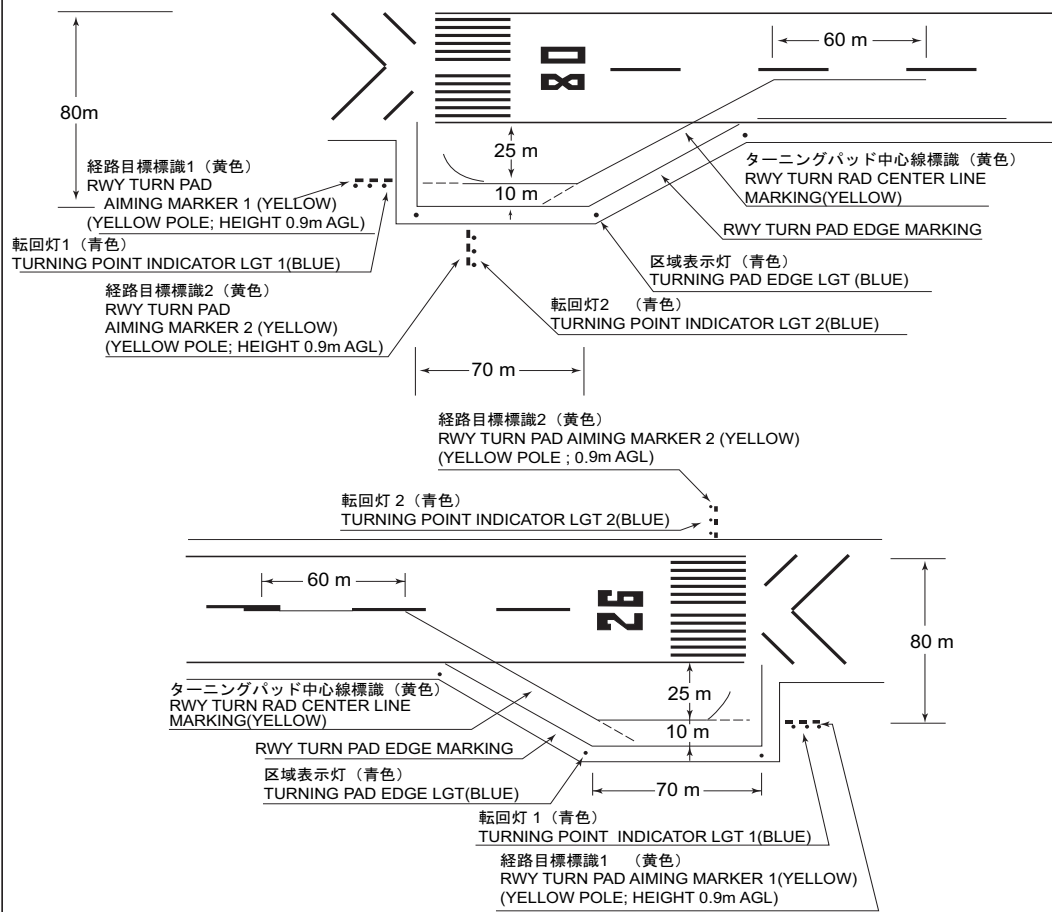
1	Use of aircraft stand ID signs, TWY guide lines and Visual docking/ parking guidance system of aircraft stands	Nil
2	RWY and TWY markings and LGT	RWY : RWY 08/26 (Marking) RWY designation, RWY CL, RWY THR, Aiming point, TDZ, RWY side stripe (LGT) RCLL, REDL, RTHL, RENL, RTZL(RWY 08 side only), RWY DIST marker LGT, Turning point indicator LGT, WBAR  TWY: (Marking) TWY CL, TWY side stripe, RWY HLDG PSN, Mandatory instruction (LGT) TWY edge LGT, TWY CL LGT
3	Stop bars	Nil
4	Remarks	(Marking) Overrun area (LGT) Apron flood LGT

**B-767型機の滑走路180°転回実施要領**

1. 滑走路中心線からターニングパッド中心線標識に従って進行する。
2. 経路目標標識1または転回灯1が一直線に見えるように進行し、経路目標標識2または転回灯2が一直線に見えた時転回を開始する。転回時のSTEERING ANGLEは45度以上を使用する。

**Procedure of 180° turn on RWY of B-767 aircraft**

1. Proceed along the RWY Center Line to the starting point of the RWY Turn Pad Center Line Marking; then
2. Proceed along the RWY Turn Pad Center Line Marking to see RWY Turn Pad Aiming Marker 1 or Turning Point Indicator Light 1 on a straight line, then commence turn at the spot where you (pilot) can see the RWY Turn Pad Aiming Marker 2 or Turning Point Indicator Light 2 on a straight line at an angle of 9 o'clock. When turning, take 45° or more steering angle.



**RJCW AD 2.10 AERODROME OBSTACLES**

In Area2 See Obstacle data

Other obstacles

OBST ID/ designation	Obstacle type	Coordinates	Elevation	Markings/ LGT	Remarks
RJCW1	Traffic Sign	452350N/1414712E	42ft	-/LIL	Under APCH SFC
RJCW2	Lighting	452401N/1414653E	51ft	-/LIL	Under APCH SFC
RJCW3	Pole	452353N/1414707E	43ft	-/LIL	Under APCH SFC
RJCW4	Antenna	452426N/1414820E	45ft	-/LIL	Under transitional SFC
RJCW5	Pole	452351N/1414710E	53ft	-/LIL	Under transitional SFC

In Area3 To be developed

**RJCW AD 2.11 METEOROLOGICAL INFORMATION PROVIDED**

1	Associated MET Office	NEW CHITOSE
2	Hours of service MET Office outside hours	H24 (NEW CHITOSE)
3	Office responsible for TAF preparation Periods of validity	Nil
4	Trend forecast Interval of issuance	Nil
5	Briefing/ consultation provided	Briefing is available upon inquiry at NEW CHITOSE
6	Flight documentation Language(s) used	C En
7	Charts and other information available for briefing or consultation	S <sub>6</sub> , U <sub>85</sub> , U <sub>7</sub> , U <sub>5</sub> , U <sub>3</sub> , U <sub>25</sub> , U <sub>2</sub> /Tr, P <sub>S</sub> , P <sub>5</sub> , P <sub>3</sub> , P <sub>25</sub> , P <sub>SWE</sub> , P <sub>SWF</sub> , P <sub>SWG</sub> , P <sub>SWI</sub> , P <sub>SWM</sub> , P <sub>SW</sub> (domestic), E, C, W <sub>E</sub> , W <sub>F</sub> , W <sub>G</sub> , W <sub>I</sub> , W, N
8	Supplementary equipment available for providing information	Nil
9	ATS units provided with information	RADIO
10	Additional information (limitation of service, etc.)	Nil

## RJCW AD 2.12 RUNWAY PHYSICAL CHARACTERISTICS

Designations RWY NR	TRUE BRG	Dimensions of RWY(M)	Strength(PCN) and surface of RWY	THR coordinates THR geoid undulation	THR elevation and highest elevation of TDZ of precision APP RWY
1	2	3	4	5	6
08	068.90°	2200×45	PCN 58/F/C/X/T	452403.14N/1414720.43E 89.0FT	THR ELEV : 23.5FT TDZ ELEV : 25.8FT
26	248.90°	2200×45	Asphalt	452428.77N/1414854.78E 89FT	THR ELEV : 31FT
Slope of RWY		Strip Dimensions(M)	RESA(Overrun) Dimensions(M)		Remarks
7		10	11		14
See AD 2.24 AD Chart		2320x300	240x300		RWY Grooving 2200m x 45m
		2320x300	240x300		

## RJCW AD 2.13 DECLARED DISTANCES

RWY Designator	TORA (m)	TODA (m)	ASDA (m)	LDA (m)	Remarks
1	2	3	4	5	6
08	2200	2200	2200	2200	Nil
26	2200	2200	2200	2200	Nil

## RJCW AD 2.14 APPROACH AND RUNWAY LIGHTING

RWY Designator	APCH LGT type LEN INTST	RTHL Color WBAR	PAPI (VASIS) Angle DIST FM THR MEHT	RTZL LEN	RCLL LEN Spacing Color INTST	REDL LEN Spacing Color INTST	RENL Color WBAR	STWL LEN Color
1	2	3	4	5	6	7	8	9
08	PALS (CAT I) 900M LIH	Green Green	PAPI 3.0°/LEFT 380m 60.7FT	900m	2200m 30m Coded color (White/Red) LIH	2200m 60m Coded color (White/Yellow) LIH	Red	Nil (*2)
26	SALS (*1) LIH	Green Green	PAPI 3.0°/LEFT 377m 61FT	Nil	2200m 30m Coded color (White/Red) LIH	2200m 60m Coded color (White/Yellow) LIH	Red	Nil (*2)
Remarks								
10								
SALS with APCH LGT beacon(600m and 900m FM RWY THR)(*1) Overrun area edge LGT(LEN: 60m, Color: Red) (*2) CGL for RWY 26								

**RJCW AD 2.15 OTHER LIGHTING, SECONDARY POWER SUPPLY**

1	ABN/IBN location, characteristics and hours of operation	ABN: 452354N/1414750E, White/Green EV4.3sec, HO
2	LDI location and LGT Anemometer location and LGT	LDI: Nil Anemometer: RWY 08: 250m from RWY 08 THR RWY 26: 375m from RWY 26 THR
3	TWY edge and centerline lighting	TWY edge and center line lights installed, see AD2.9
4	Secondary power supply/ switch-over time	Within 1 sec: RCLL, REDL, RTHL, RENL, WBAR, Turning point indicator LGT, Overrun area edge LGT Within 15 sec: Other LGT
5	Remarks	WDI LGT

**RJCW AD 2.16 HELICOPTER LANDING AREA**

Nil
-----

**RJCW AD 2.17 ATS AIRSPACE**

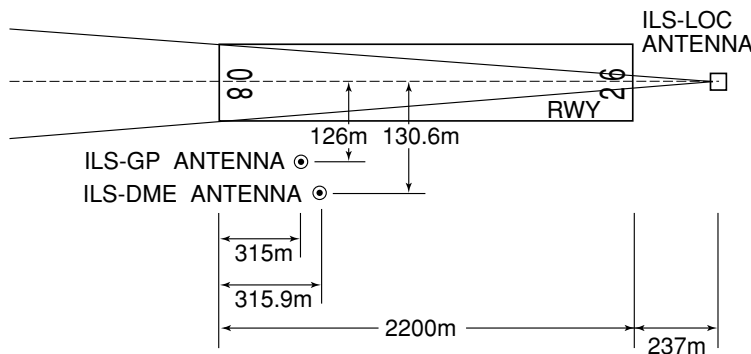
Designation and lateral limits		Vertical limits (ft)	Airspace classification	ATS unit call sign Language	Remarks
1		2	3	4	6
Wakkanai Information Zone	Area within a radius of 5nm(9km) of Wakkanai ARP	3,000 or below	E	Wakkanai Radio	

**RJCW AD 2.18 ATS COMMUNICATION FACILITIES**

Service designation	Call sign	Frequency	Hours of operation	Remarks
1	2	3	4	5
A/G	Wakkanai Radio	118.3MHz 126.2MHz	2330 - 0930	(1)Primary (2)Interference by foreign broadcast exists

**RJCW AD 2.19 RADIO NAVIGATION AND LANDING AIDS**

Type of aid (VOR declination)	ID	Frequency	Hours of operation	Position of transmitting antenna coordinates	Elevation of DME transmitting antenna	Remarks
1	2	3	4	5	6	7
VOR (10°W/2016)	WKE	115.3MHz	H24	452426.49N/ 1414820.33E		
DME	WKE	1187MHz (CH-100X)	H24	452426.83N/ 1414819.20E	48.9ft	
ILS-LOC 08	IWK	111.1MHz	2330 - 0930	452431.54N/ 1414904.96E		LOC: 237m(778ft) away FM RWY26 THR, BRG(MAG) 079°.
ILS-GP 08	-	331.7MHz	2330 - 0930	452403.00N/ 1414736.00E		GP: 315m(1034ft) inside FM RWY08 THR, 126m(413ft) S of RCL. ILS reference datum 16.5m(54ft). GP angle 3.0°.
ILS-DME 08	IWK	1009MHz (CH-48X)	2330 - 0930	452402.88N/ 1414736.11E	41ft	DME: 315.9m(1036ft) inside FM RWY08 THR, 130.6m(428ft) S of RCL.



REMARKS : 1. LOC beam BRG(MAG) 079°  
 2. HGT of ILS REF datum 16.5m(54ft)  
 3. GP Angle 3.0°  
 4. ELEV of ILS-DME 12.2m(41ft)

**RJCW AD 2.20 LOCAL TRAFFIC REGULATIONS**

1. Airport regulations

Prior permission is required for all transient aircraft due to parking congestion except scheduled and/or emergency flight.  
 Tel : Hokkaido Airports Co.,Ltd. Wakkanai Airport Office 0162-26-2080

2. Taxiing to and from stands

Nil

3. Parking area for small aircraft(General aviation)

Nil

4. Parking area for helicopters

Nil

5. Apron - taxiing during winter conditions

Nil



6. Taxiing - limitations

Nil

7. School and training flights - technical test flights - use of runways

Nil

8. Helicopter traffic - limitation

Nil

9. Removal of disabled aircraft from runways

Nil

**RJCW AD 2.21 NOISE ABATEMENT PROCEDURES**

Nil

**RJCW AD 2.22 FLIGHT PROCEDURES**

**TAKE OFF MINIMA**

	RWY	ACFT CAT	REDL & RCLL		REDL or RCLL or RCL Marking		NIL (DAYTIME ONLY)	
			RVR	VIS	RVR	VIS	RVR	VIS
Multi-Engine ACFT with TKOF ALTN AP FILED	08	A,B,C,D	400m	400m	400m	400m	-	500m
	26	A,B,C,D	-	400m	-	400m	-	500m
OTHER	08	A,B,C,D	AVBL LDG MINIMA					
	26	A,B,C,D						

**RJCW AD 2.23 ADDITIONAL INFORMATION**

Nil

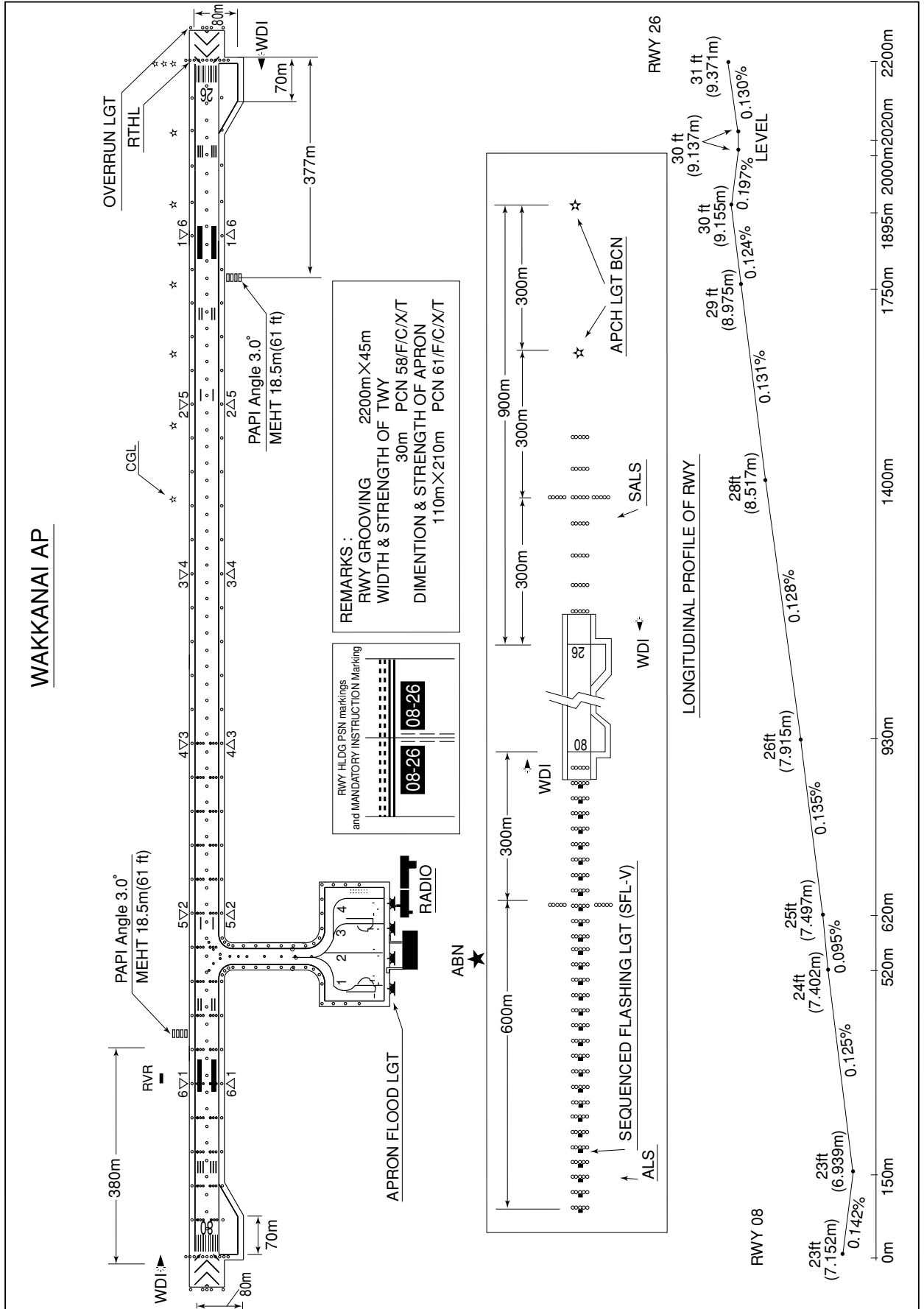
**RJCW AD 2.24 CHARTS RELATED TO AN AERODROME**

Aerodrome/Heliport Chart  
 Standard Departure Chart-Instrument (PANKE)  
 Standard Departure Chart-Instrument (RUMOI)  
 Standard Departure Chart-Instrument (WAKKANAI REVERSAL)  
 Standard Departure Chart-Instrument (YOROI-RNAV)  
 Standard Arrival Chart-Instrument (IKURA)  
 Standard Arrival Chart-Instrument (DASSY-RNAV)  
 Instrument Approach Chart (ILS or LOC RWY08)  
 Instrument Approach Chart (VOR RWY08)  
 Instrument Approach Chart (VOR RWY26)  
 Instrument Approach Chart (VOR A)  
 Instrument Approach Chart (RNAV(RNP) RWY08)  
 Instrument Approach Chart (RNAV(RNP) RWY26)  
 Other Chart (Visual REP)  
 Other Chart (LDG CHART)  
 Other Chart (MVA CHART)

**INTENTIONALLY LEFT BLANK**

RJCW / WAKKANAI

AD CHART

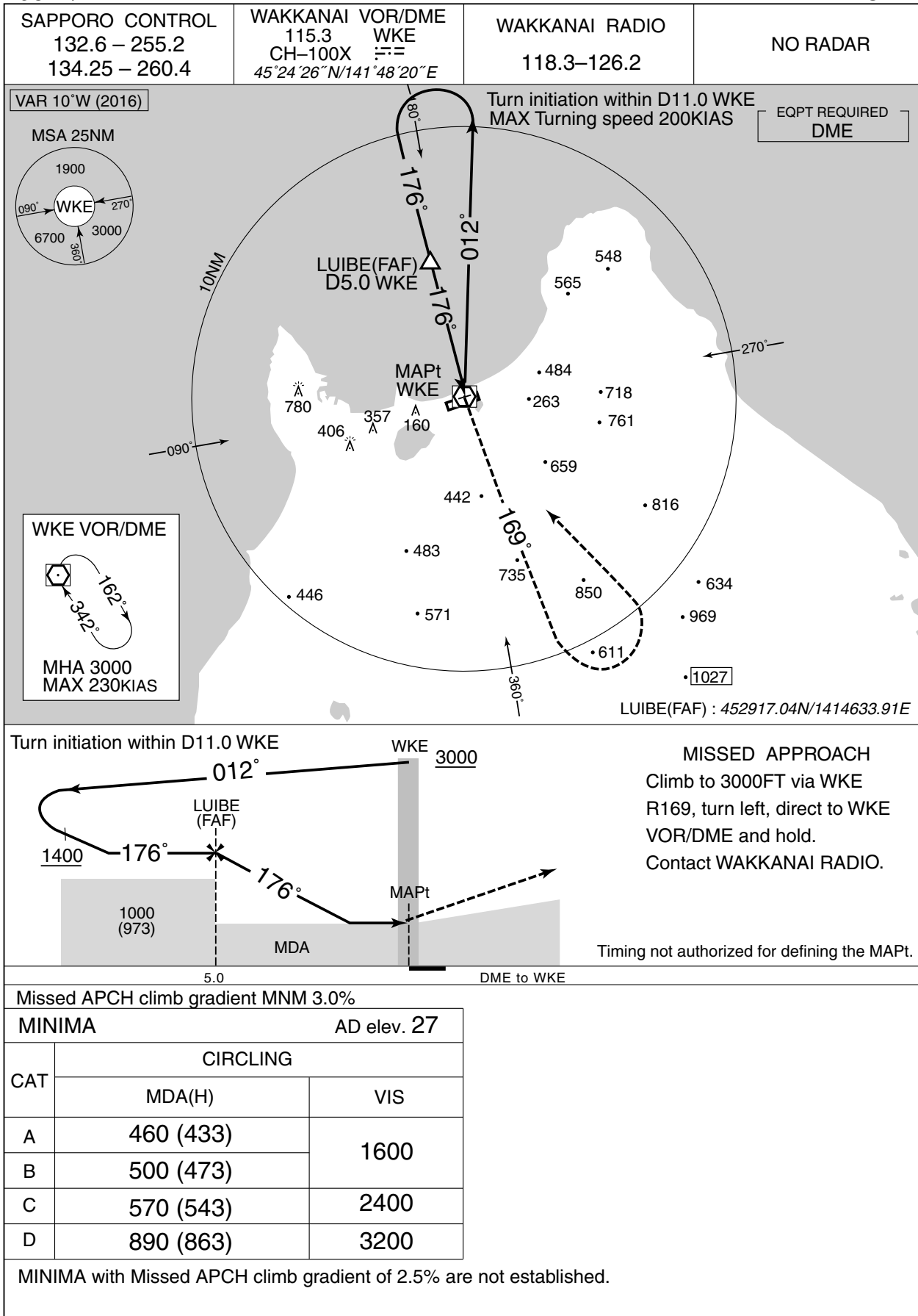


**INTENTIONALLY LEFT BLANK**

INSTRUMENT APPROACH CHART

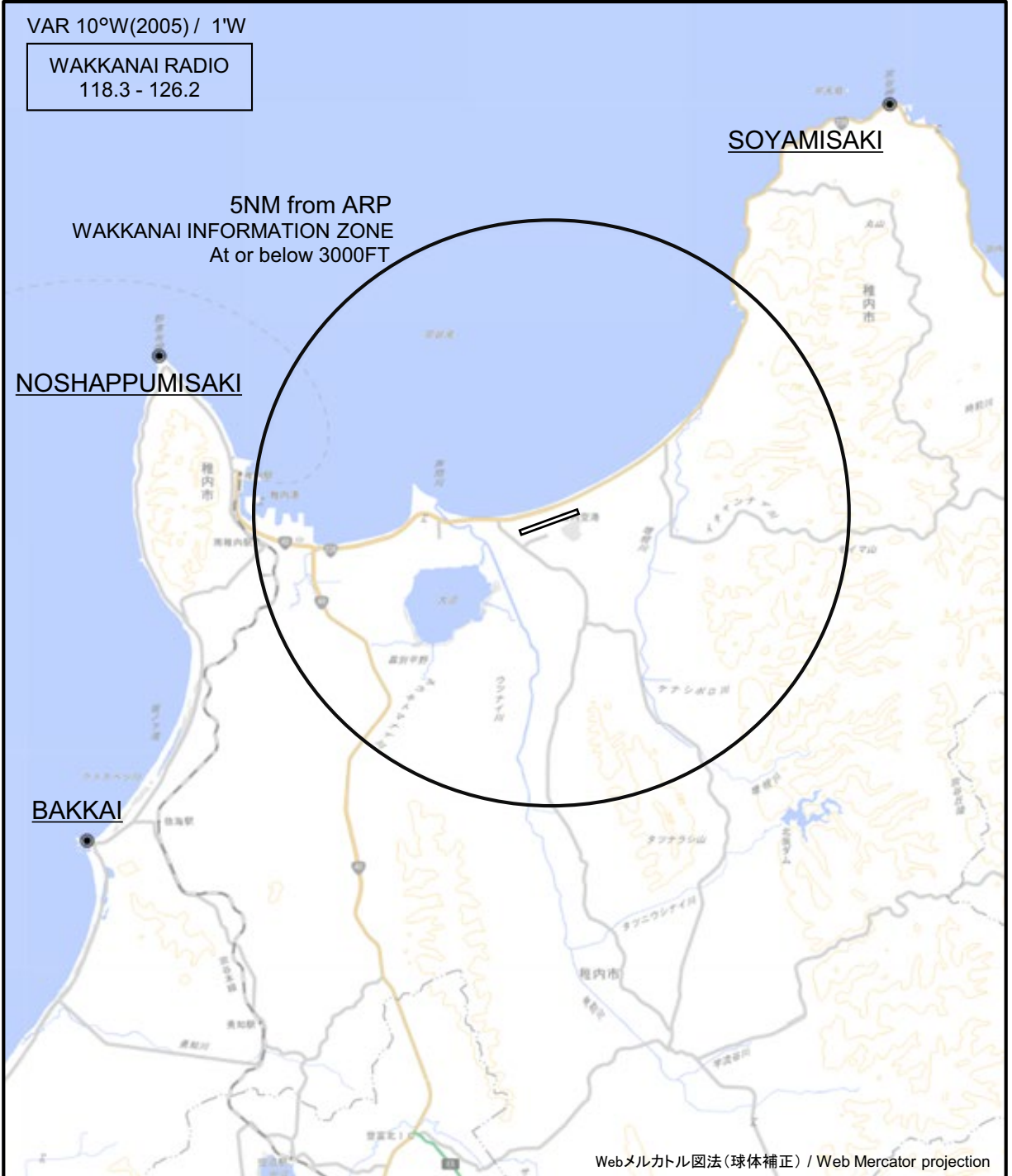
RJCW / WAKKANAI

VOR A



RJCW / WAKKANAI

Visual REP

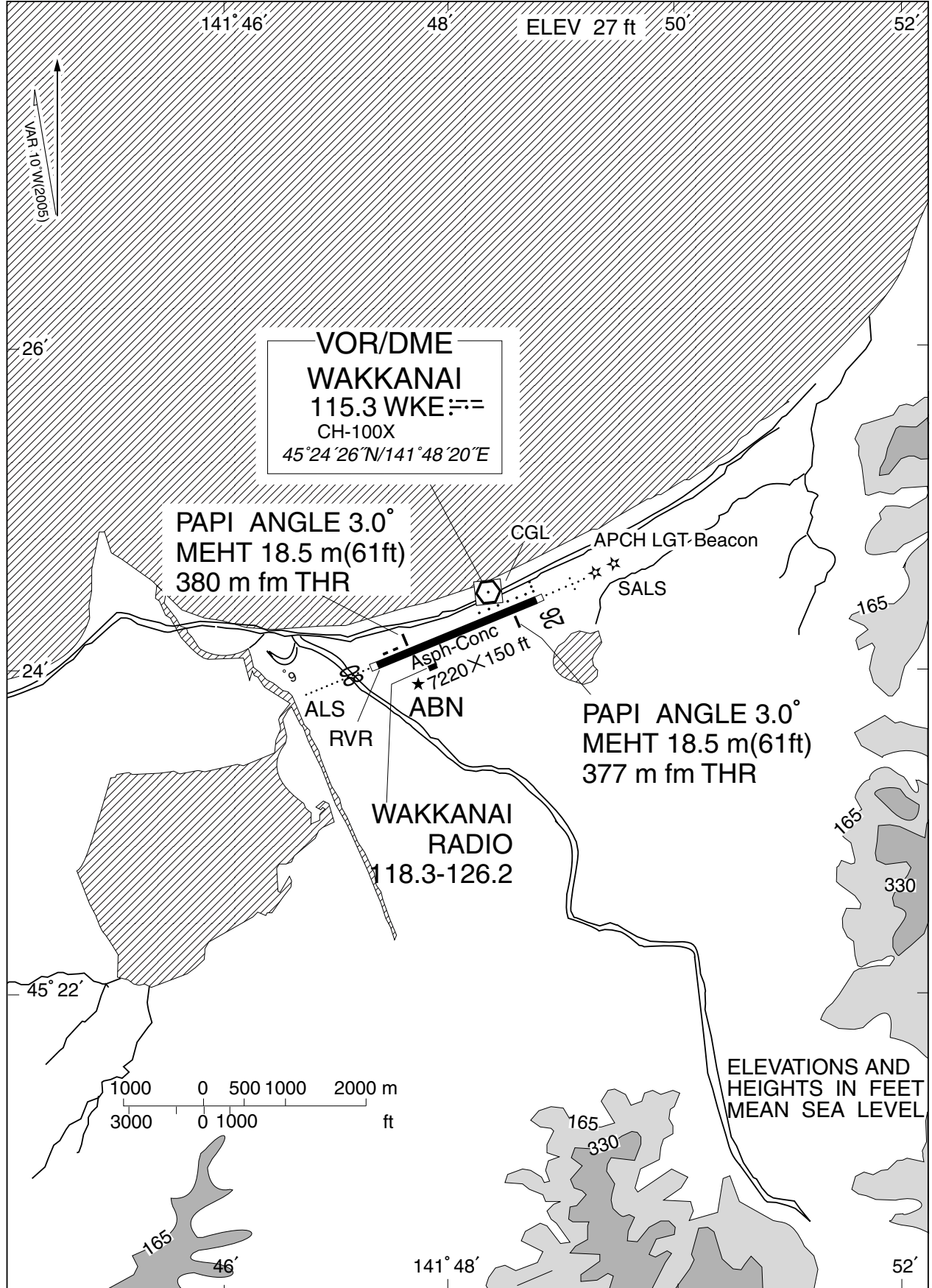


CHANGE : Map updated. BRG/DIST from ARP.

※図中に標高を示す数字がある場合、単位はメートル(m)である。The unit of measurement used to express elevation is meter(m).

Call sign	BRG / DIST from ARP	Remarks
宗谷岬 Soyamisaki	039°T / 9.0NM	灯台 Lighthouse
野寒布岬 Noshappumisaki	292°T / 7.2NM	灯台 Lighthouse
抜海 Bakkai	234°T / 9.7NM	岬 Cape

RJCW / WAKKANAI LDG CHART



Remarks : Interference by foreign broadcast exists on 126.2

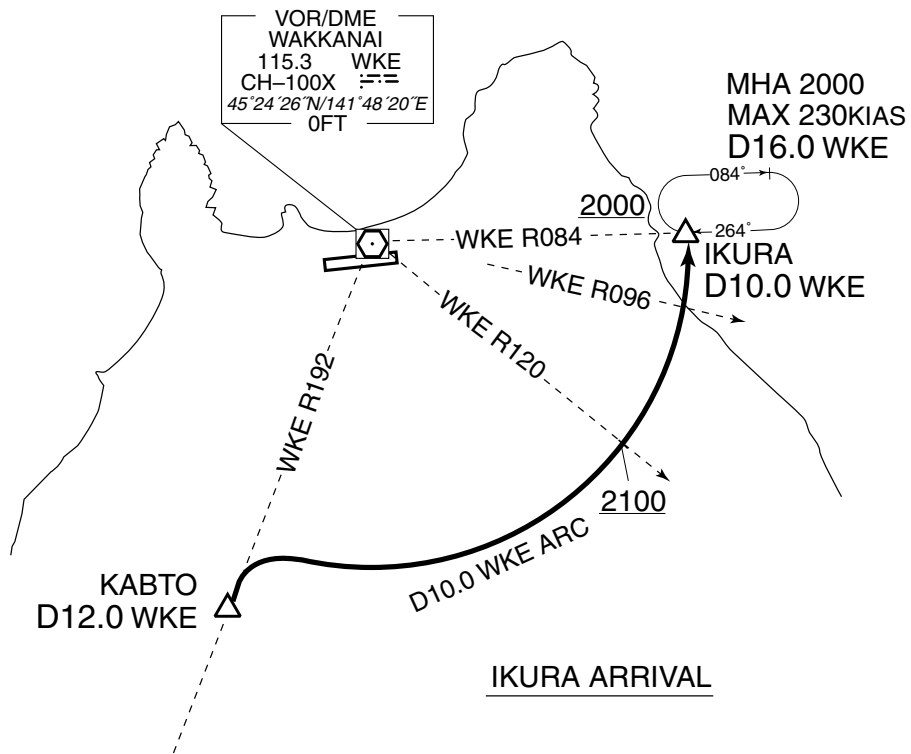
STANDARD ARRIVAL CHART-INSTRUMENT

RJCW / WAKKANAI

STAR

IKURA ARRIVAL

From over KABTO, turn right proceed via WKE 10.0DME counterclockwise ARC to IKURA.  
Cross WKE R120 at or above 2100FT, cross IKURA at or above 2000FT.



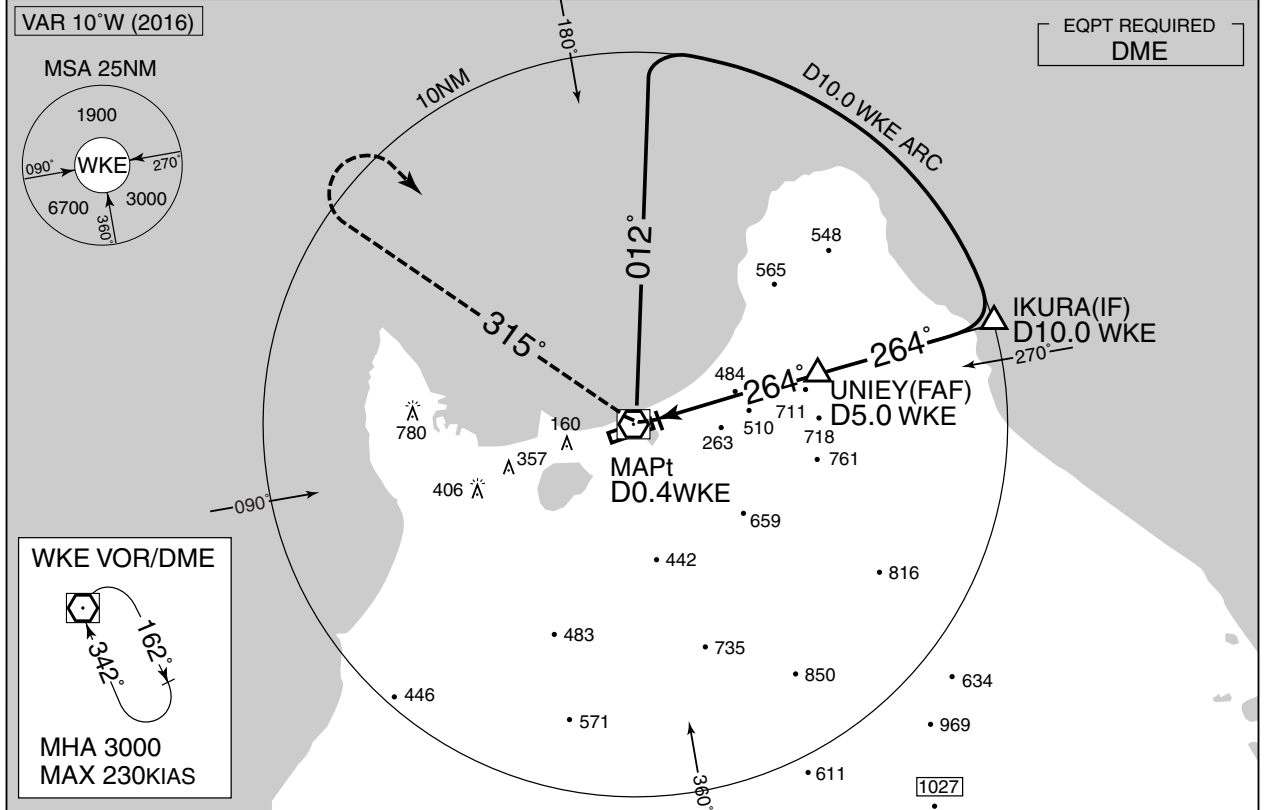


INSTRUMENT APPROACH CHART

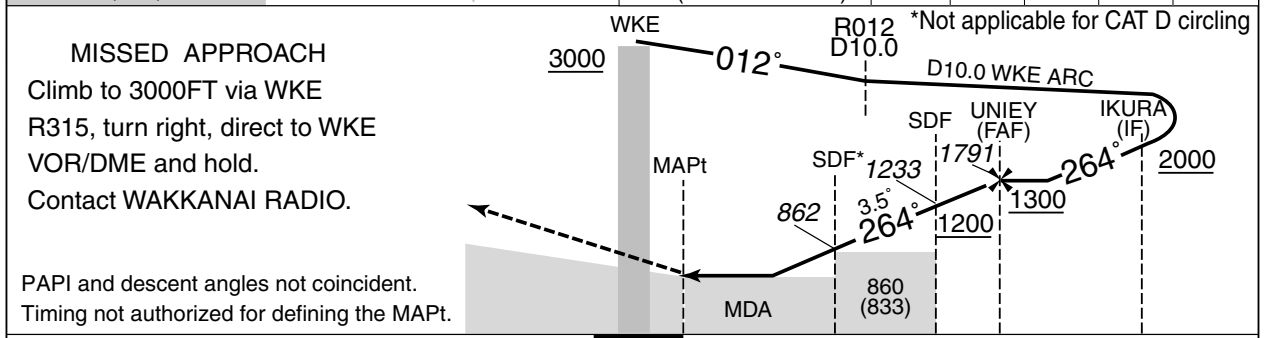
RJCW / WAKKANAI

VOR RWY26

SAPPORO CONTROL 132.6 – 255.2 134.25 – 260.4	WAKKANAI VOR/DME 115.3 WKE CH-100X 45°24'26"N/141°48'20"E	WAKKANAI RADIO 118.3 – 126.2	NO RADAR
--	--	---------------------------------	----------



UNIEY(FAF) : 452547.09N/1415510.72E	NM to WKE	MAPt	2	3	4	FAF
	ALT(3.5° APCH Path)	-	676	1047	1419	1791

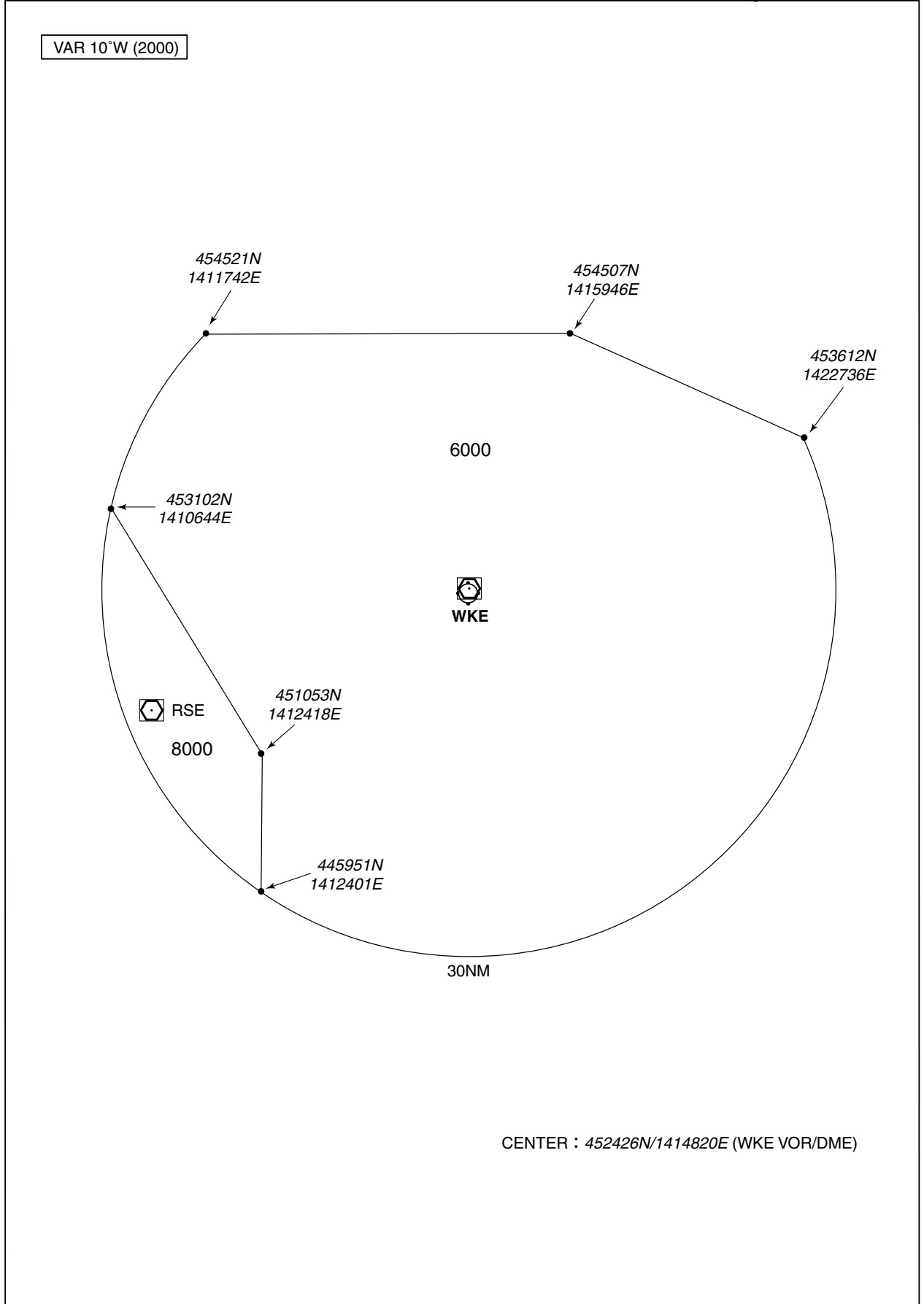


DME to WKE	0.4	2.5	3.5	5.0	10.0
NM to THR	0	2.1	3.2	4.6	9.6

MINIMA		THR elev. 31		AD elev. 27	
CAT			CIRCLING		
	MDA(H)	CMV	MDA(H)	VIS	
A	490 (463)	1400	490 (463)	1600	
B		1500	500 (473)		
C		1600	570 (543)	2400	
D		1800	890 (863)		

RJCW / WAKKANAI

Minimum Vectoring Altitude CHART



STANDARD DEPARTURE CHART - INSTRUMENT

RJCW / WAKKANAI

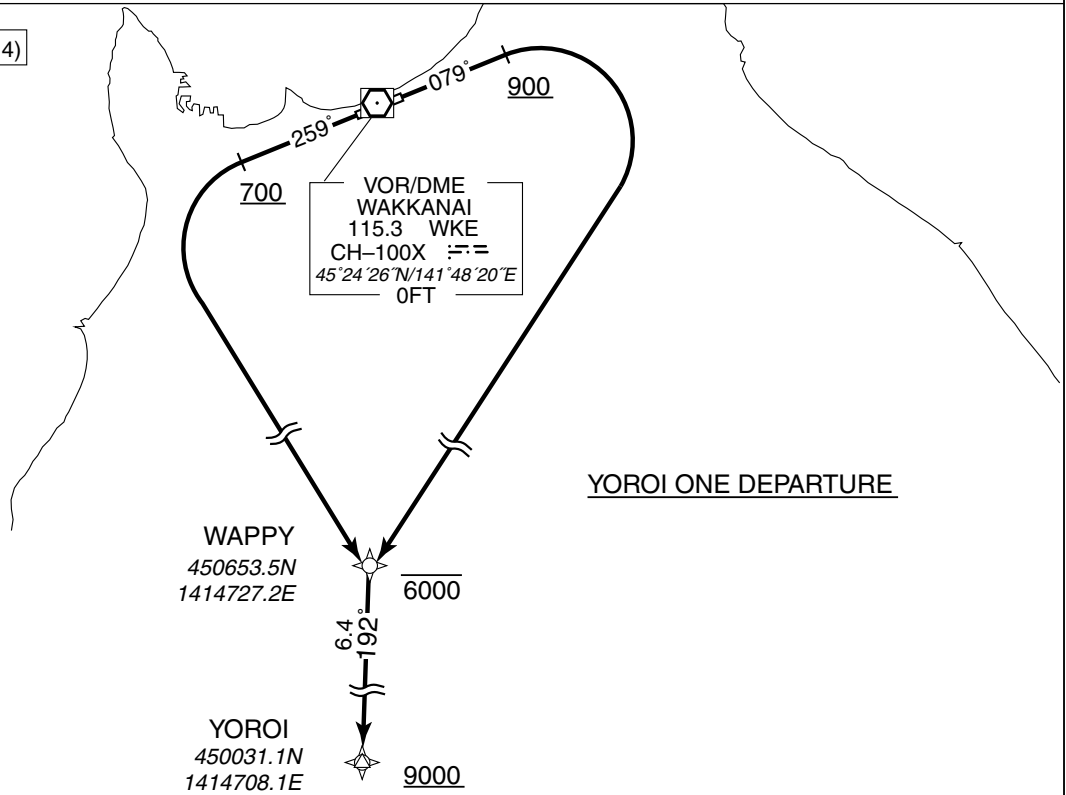
RNAV SID

YOROI ONE DEPARTURE

Basic RNP1

Note GNSS required.

VAR 10°W (2014)



YOROI ONE DEPARTURE

RWY08 : Climb on HDG079° at or above 900FT, turn right direct to WAPPY at or below 6000FT, to YOROI at or above 9000FT.

RWY26 : Climb on HDG259° at or above 700FT, turn left direct to WAPPY at or below 6000FT, to YOROI at or above 9000FT.

Note RWY08 : 6.0% climb gradient required up to 900FT.

RWY26 : 5.0% climb gradient required up to 700FT.

RWY08

Serial Number	Path Descriptor	Waypoint Identifier	Fly Over	Course [°M(°T)]	Magnetic Variation	Distance (NM)	Turn Direction	Altitude (FT)	Speed (KIAS)	Vertical Angle	Navigation Specification
001	VA	—	—	079 (068.8)	-9.9	—	—	+900	—	—	Basic RNP1
002	DF	WAPPY	—	—	-9.9	—	R	-6000	—	—	Basic RNP1
003	TF	YOROI	—	192 (182.0)	-9.9	6.4	—	+9000	—	—	Basic RNP1

RWY26

Serial Number	Path Descriptor	Waypoint Identifier	Fly Over	Course [°M(°T)]	Magnetic Variation	Distance (NM)	Turn Direction	Altitude (FT)	Speed (KIAS)	Vertical Angle	Navigation Specification
001	VA	—	—	259 (248.9)	-9.9	—	—	+700	—	—	Basic RNP1
002	DF	WAPPY	—	—	-9.9	—	L	-6000	—	—	Basic RNP1
003	TF	YOROI	—	192 (182.0)	-9.9	6.4	—	+9000	—	—	Basic RNP1

**INTENTIONALLY LEFT BLANK**

STANDARD ARRIVAL CHART - INSTRUMENT

RJCW / WAKKANAI

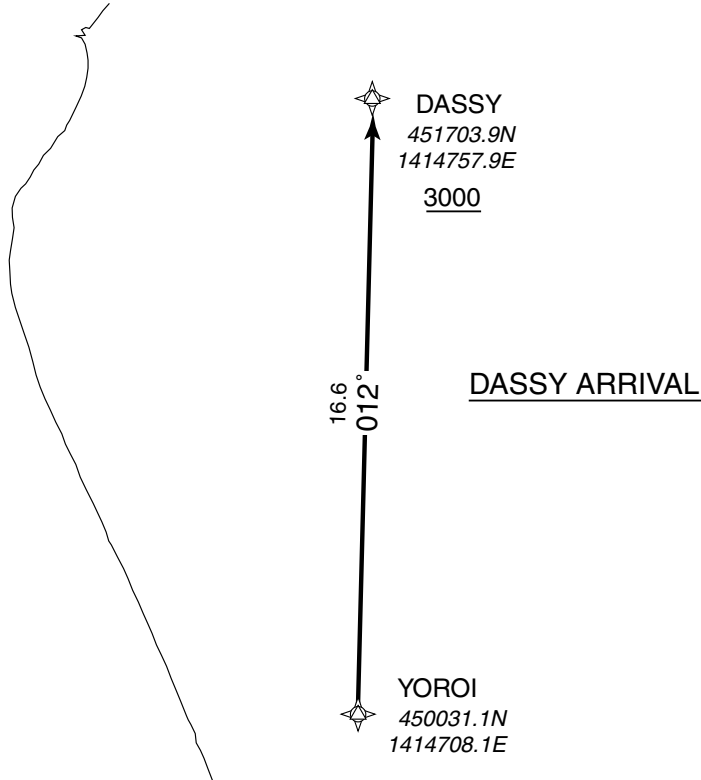
RNAV STAR

DASSY ARRIVAL

Basic RNP1

Note GNSS required.

VAR 10°W (2014)



DASSY ARRIVAL

From YOROI, to DASSY at or above 3000FT.

Serial Number	Path Descriptor	Waypoint Identifier	Fly Over	Course °M(°T)	Magnetic Variation	Distance (NM)	Turn Direction	Altitude (FT)	Speed (KIAS)	Vertical Angle	Navigation Specification
001	IF	YOROI	—	—	-9.9	—	—	—	—	—	Basic RNP1
002	TF	DASSY	—	012 (002.0)	-9.9	16.6	—	+3000	—	—	Basic RNP1

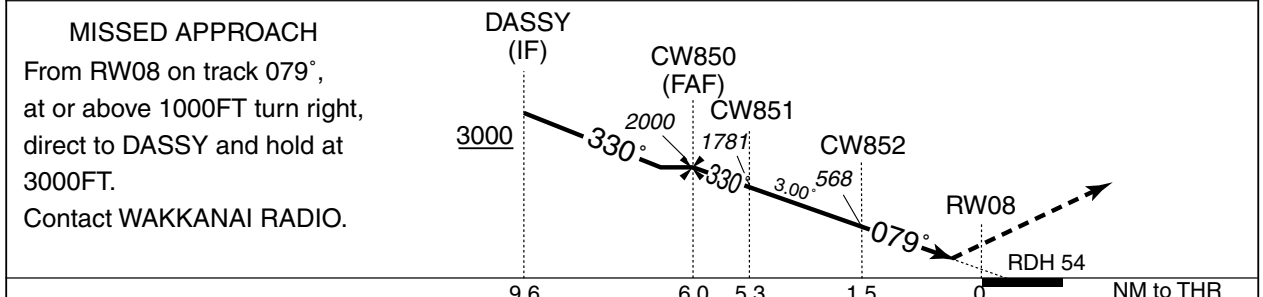
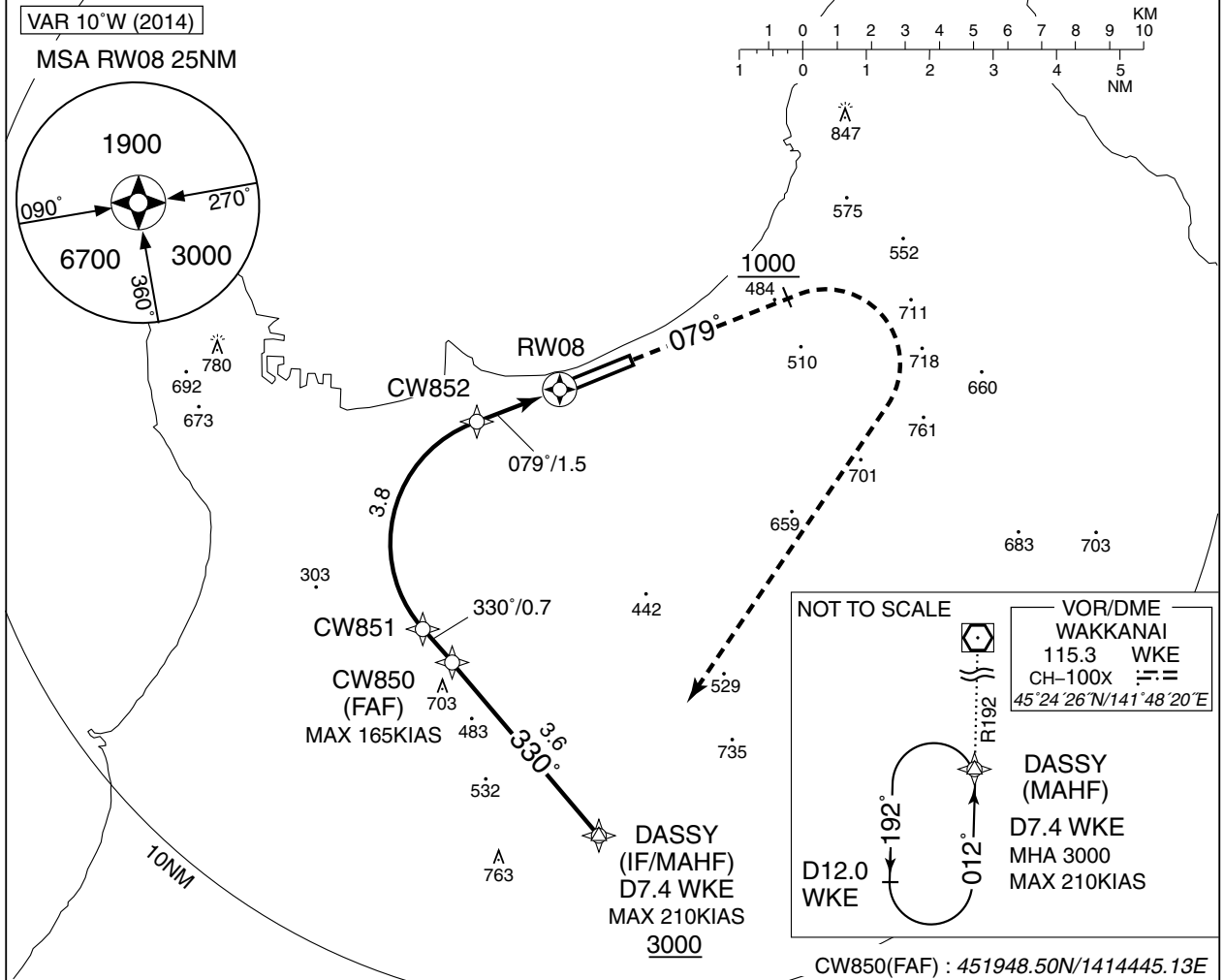
INSTRUMENT APPROACH CHART

RJCW / WAKKANAI

RNAV(RNP) RWY08

SAPPORO CONTROL 132.6 – 255.2 134.25 – 260.4	GNSS and RF required.	WAKKANAI RADIO 118.3 – 126.2	NO RADAR
--	-----------------------	---------------------------------	----------

For uncompensated Baro-VNAV systems, procedure not authorized below -25°C / above 45°C



MISSED APCH climb gradient MNM 5.0%

MINIMA THR elev. 23 AD elev. 27

CAT	RNP 0.30	
	DA(H)	RVR/CMV
A	-	-
B	-	-
C	323 (300)	1000
D	323 (300)	1400

**RNP AR**  
Special Authorization Required

MINIMA with Missed APCH climb gradient of 2.5% are not established.

## INSTRUMENT APPROACH CHART

RJCW / WAKKANAI

RNAV(RNP) RWY08

RNAV(RNP) RWY08Coding Table

Serial Number	Path Descriptor	Waypoint Identifier	Fly Over	Course °M(°T)	Magnetic Variation	Distance (NM)	Turn Direction	Altitude (FT)	Speed (KIAS)	VPA/RDH (°/FT)	RNP Value
001	IF	DASSY	—	—	-9.9	—	—	+3000	-210	—	—
002	TF	CW850	—	330 (320.5)	-9.9	3.6	—	2000	-165	—	1.0
003	TF	CW851	—	330 (320.5)	-9.9	0.7	—	1781	—	-3.00	0.3
004	RF Center: CWRF1 r=2.01NM	CW852	—	—	-9.9	3.8	R	568	—	-3.00	0.3
005	TF	RW08	Y	079 (068.8)	-9.9	1.5	—	77	—	-3.00/54	0.3
006	FA	—	—	079 (068.8)	-9.9	—	—	+1000	—	—	1.0
007	DF	DASSY	—	—	-9.9	—	R	3000	—	—	1.0

Waypoint Coordinates

Waypoint Identifier	Coordinates	RF Arc Center Identifier	Coordinates
CW850	451948.50N/1414445.13E	CWRF1	452137.25N/1414619.72E
CW851	452020.32N/1414407.80E		
CW852	452329.85N/1414518.02E		
RW08	452403.14N/1414720.43E		
DASSY	451703.92N/1414757.93E		

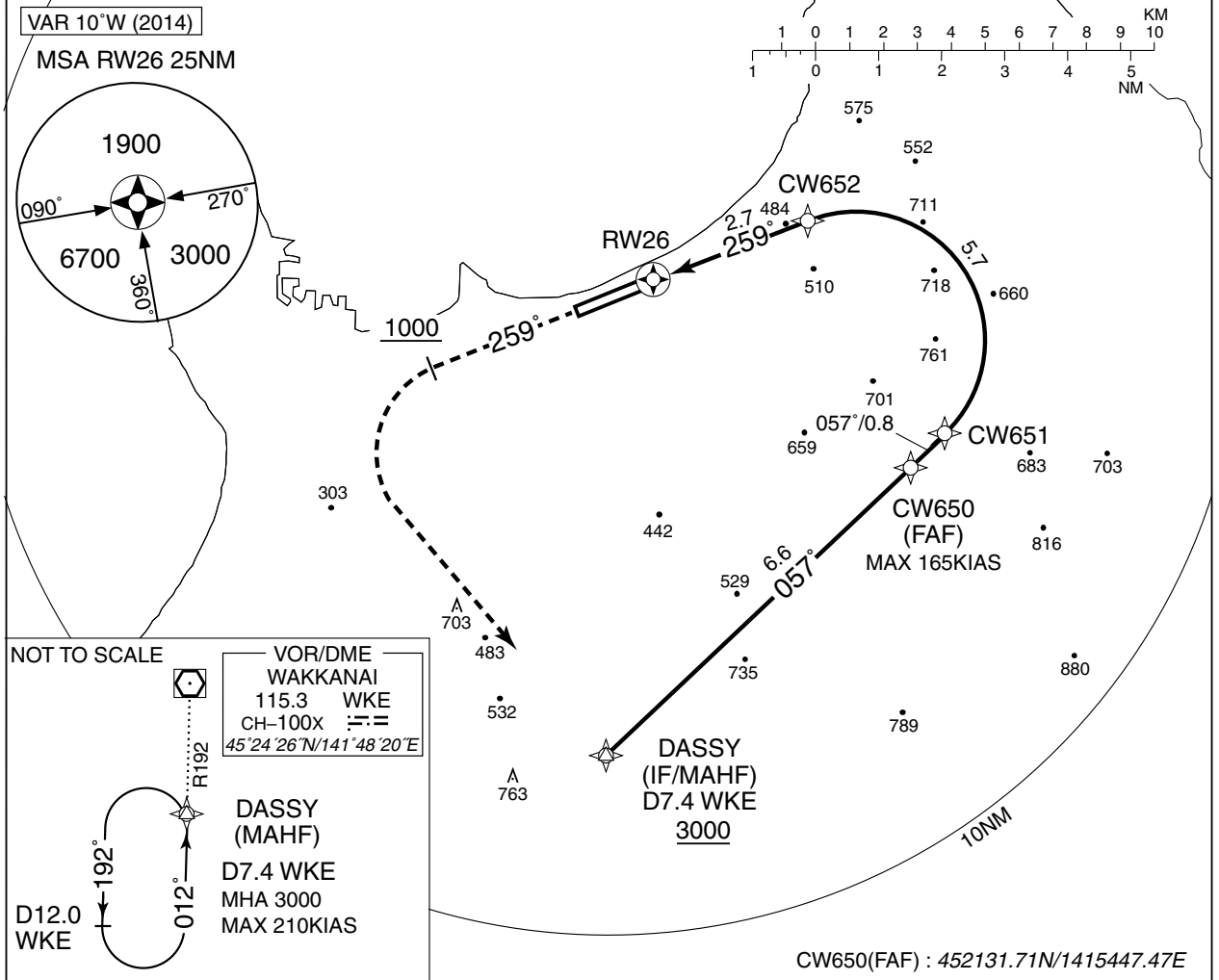
INSTRUMENT APPROACH CHART

RJCW / WAKKANAI

RNAV(RNP) RWY26

SAPPORO CONTROL 132.6 – 255.2 134.25 – 260.4	GNSS and RF required.	WAKKANAI RADIO 118.3 – 126.2	NO RADAR
--	-----------------------	---------------------------------	----------

For uncompensated Baro-VNAV systems, procedure not authorized below -25°C/ above 45°C

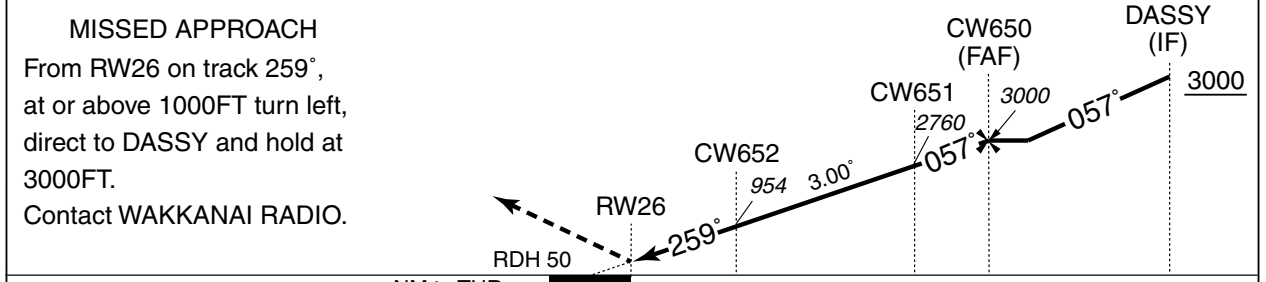


NOT TO SCALE

VOR/DME WAKKANAI 115.3 WKE CH-100X 45°24'26"N/141°48'20"E
---

DASSY (MAHF)  
D7.4 WKE  
MHA 3000  
MAX 210KIAS

D12.0 WKE



NM to THR 0 2.7 8.4 9.2 15.7

Missed APCH climb gradient MNM 5.0%

MINIMA	THR elev. 31	AD elev. 27
CAT	RNP 0.30	
	DA(H)	CMV
A	-	-
B	-	-
C	331 (300)	1400
D		1600

**RNP AR**  
Special Authorization Required

MINIMA with Missed APCH climb gradient of 2.5% are not established.



## INSTRUMENT APPROACH CHART

RJCW / WAKKANAI

RNAV(RNP) RWY26

RNAV(RNP) RWY26Coding Table

Serial Number	Path Descriptor	Waypoint Identifier	Fly Over	Course °M(°T)	Magnetic Variation	Distance (NM)	Turn Direction	Altitude (FT)	Speed (KIAS)	VPA/RDH (°/FT)	RNP Value
001	IF	DASSY	—	—	-9.9	—	—	+3000	—	—	—
002	TF	CW650	—	057 (047.0)	-9.9	6.6	—	3000	-165	—	1.0
003	TF	CW651	—	057 (047.1)	-9.9	0.8	—	2760	—	-3.00	0.3
004	RF Center: CWRF2 r=2.05NM	CW652	—	—	-9.9	5.7	L	954	—	-3.00	0.3
005	TF	RW26	Y	259 (248.9)	-9.9	2.7	—	81	—	-3.00/50	0.3
006	FA	—	—	259 (248.9)	-9.9	—	—	+1000	—	—	1.0
007	DF	DASSY	—	—	-9.9	—	L	3000	—	—	1.0

Waypoint Coordinates

Waypoint Identifier	Coordinates	RF Arc Center Identifier	Coordinates
CW650	452131.71N/1415447.47E	CWRF2	452332.87N/1415335.73E
CW651	452202.42N/1415534.54E		
CW652	452527.92N/1415232.94E		
RW26	452428.77N/1414854.78E		
DASSY	451703.92N/1414757.93E		

STANDARD DEPARTURE CHART - INSTRUMENT

RJCW / WAKKANAI

SID

WAKKANAI REVERSAL ONE DEPARTURE

RWY08 : Climb RWY HDG to 900FT, turn left HDG302°...

RWY26 : Climb RWY HDG to 700FT, turn right HDG032°...

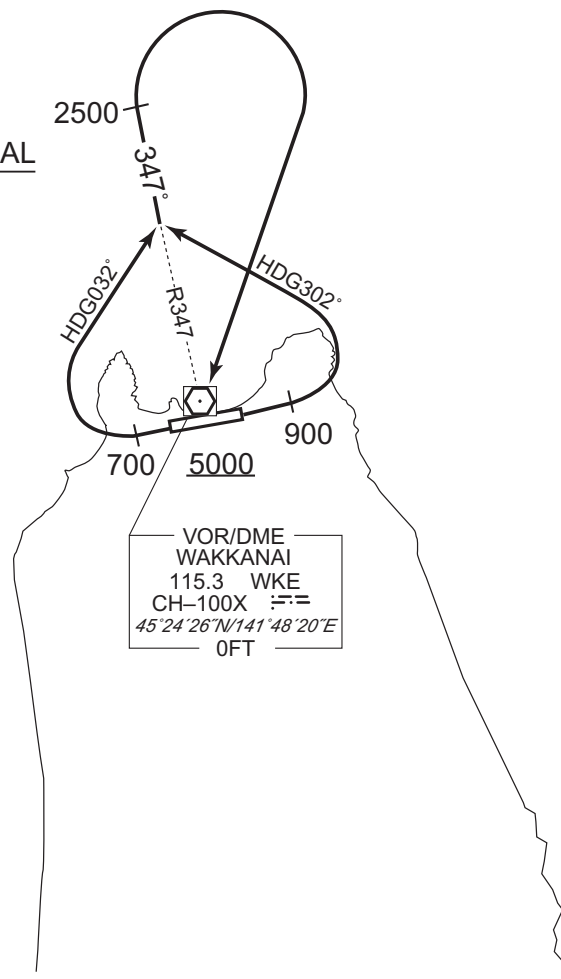
...to intercept and proceed via WKE R347 to 2500FT, turn right direct to WKE VOR/DME.

Cross WKE VOR/DME at or above 5000FT.

NOTE RWY08 : 4.4% climb gradient required up to 900FT.

OBST ALT 591FT located at 2.6NM 096° FM end of RWY08.

WAKKANAI REVERSAL  
ONE DEPARTURE



STANDARD DEPARTURE CHART - INSTRUMENT

RJCW / WAKKANAI

SID

PANKE TWO DEPARTURE

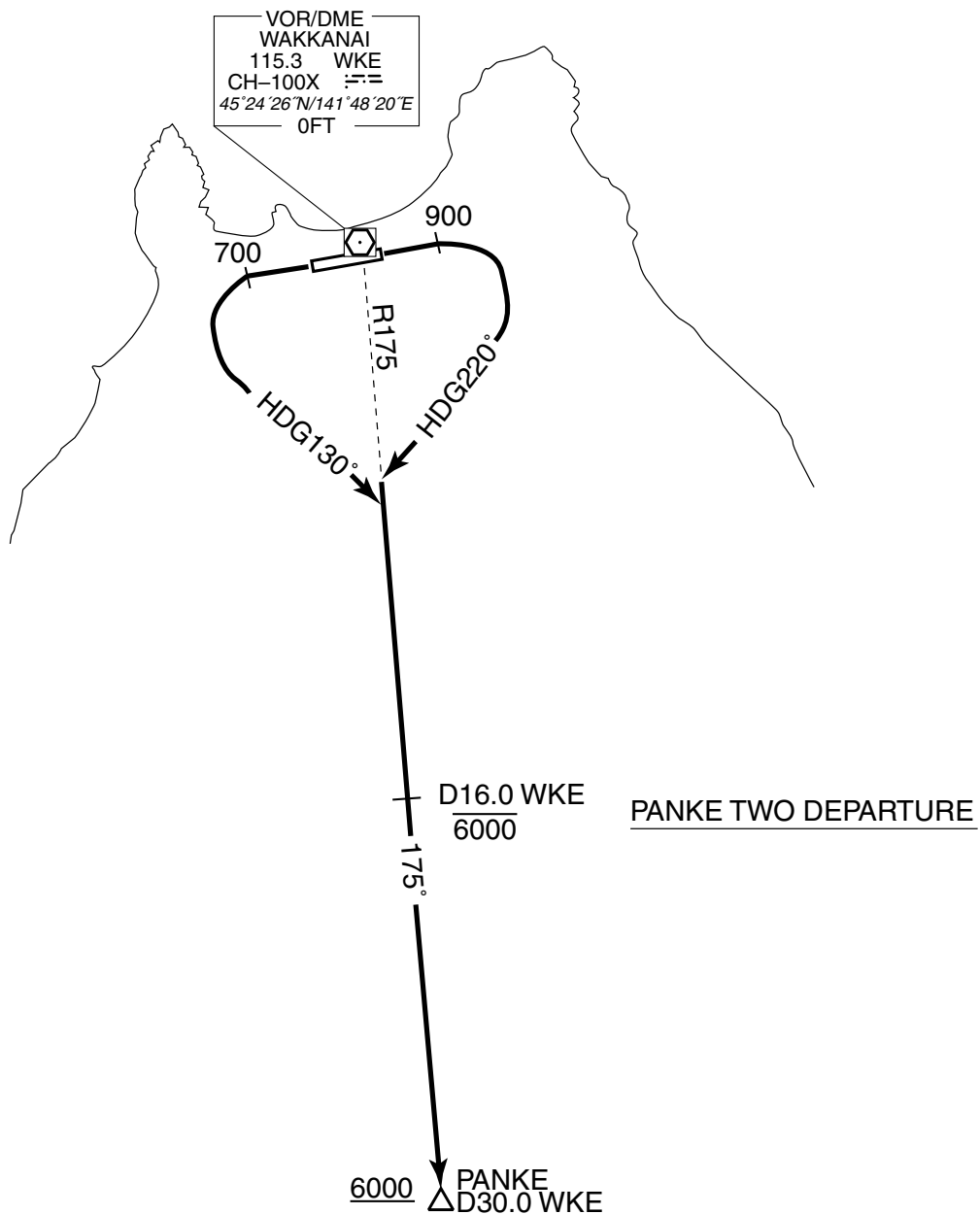
RWY08 : Climb RWY HDG to 900FT, turn right HDG 220° ...

RWY26 : Climb RWY HDG to 700FT, turn left HDG 130° ...  
...to intercept and proceed via WKE R175 to PANKE.

Cross WKE R175/16.0DME at or below 6000FT, cross PANKE at or above 6000FT.

NOTE RWY08 : 4.4% climb gradient required up to 900FT.

OBST ALT 591FT located at 2.6NM 096° FM end of RWY08.



STANDARD DEPARTURE CHART - INSTRUMENT

RJCW / WAKKANAI

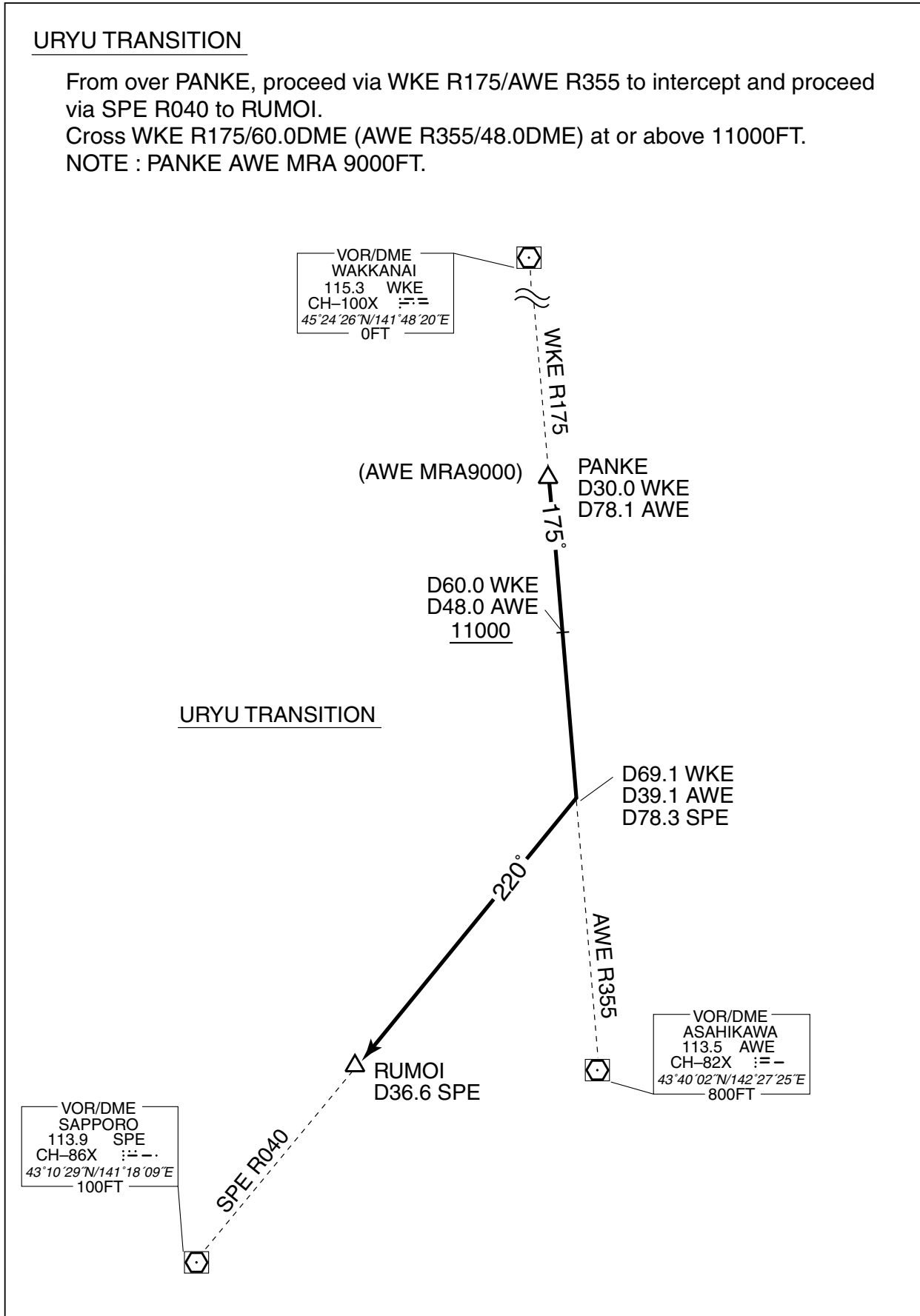
TRANSITION

URYU TRANSITION

From over PANKE, proceed via WKE R175/AWE R355 to intercept and proceed via SPE R040 to RUMOI.

Cross WKE R175/60.0DME (AWE R355/48.0DME) at or above 11000FT.

NOTE : PANKE AWE MRA 9000FT.



STANDARD DEPARTURE CHART - INSTRUMENT

RJCW / WAKKANAI

SID

RUMOI FIVE DEPARTURE

RWY08 : Climb RWY HDG to 900FT, turn right HDG 237° ...

RWY26 : Climb RWY HDG to 700FT, turn left HDG 147° ...

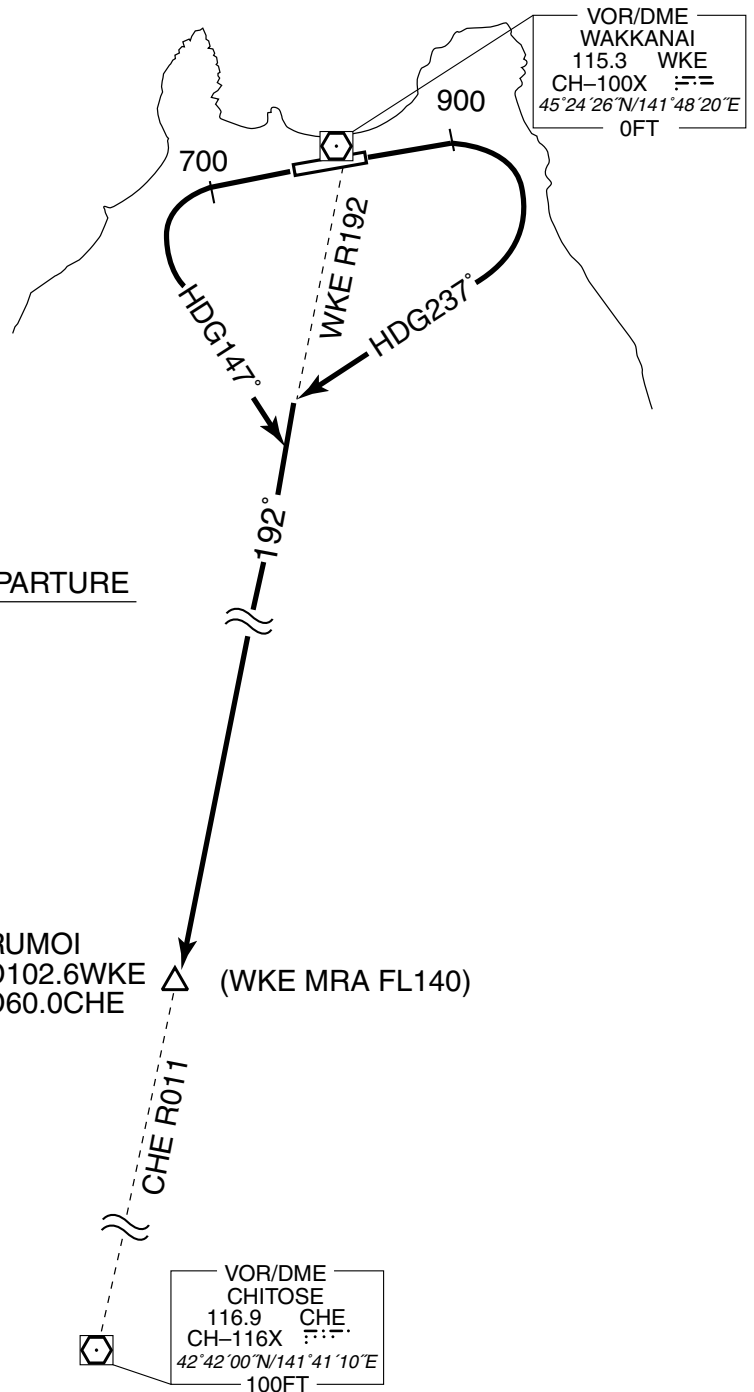
...to intercept and proceed via WKE R192/CHE R011 to RUMOI.

NOTE RWY08 : 4.4% climb gradient required up to 900FT.

OBST ALT 591FT located at 2.6NM 096° FM end of RWY08.

RUMOI WKE MRA FL140.

RUMOI FIVE DEPARTURE

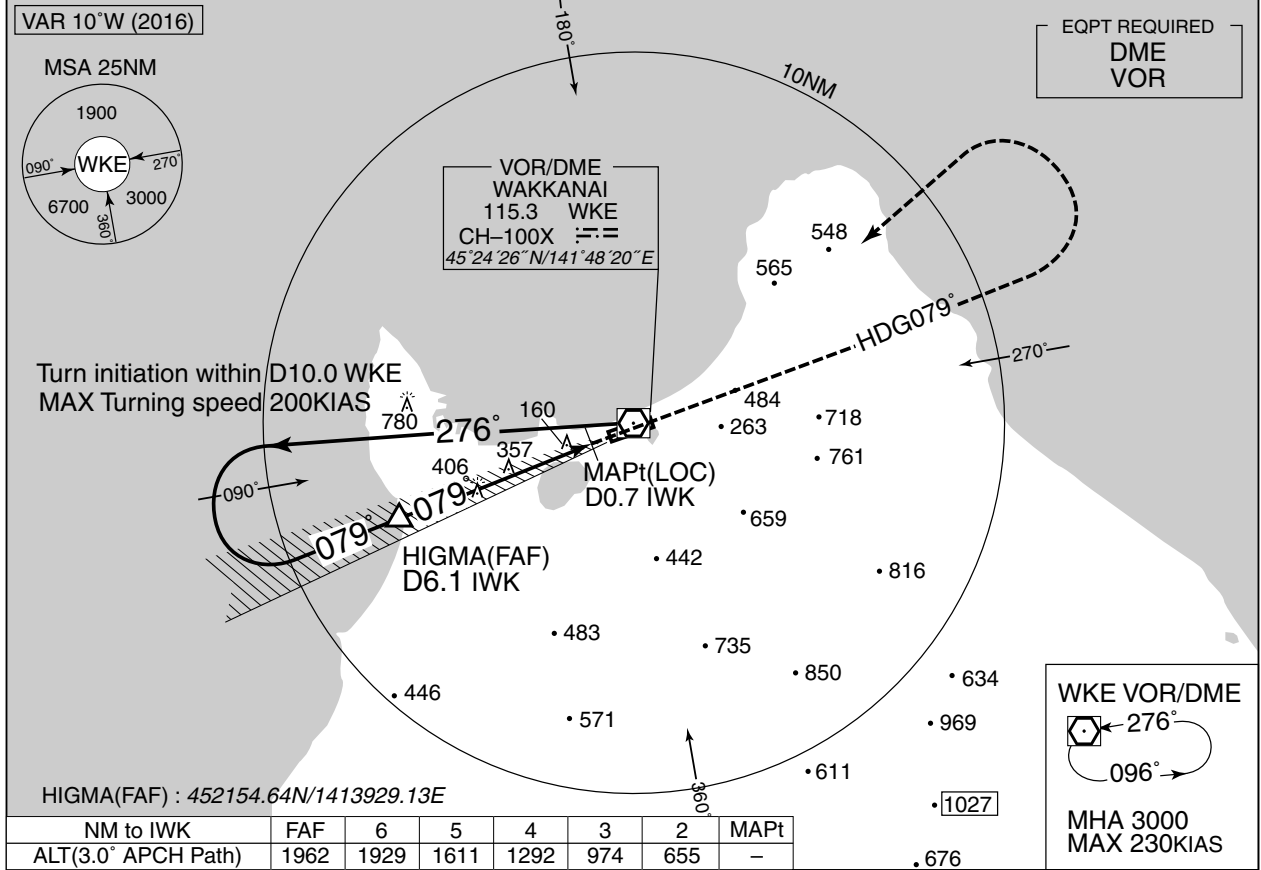


INSTRUMENT APPROACH CHART

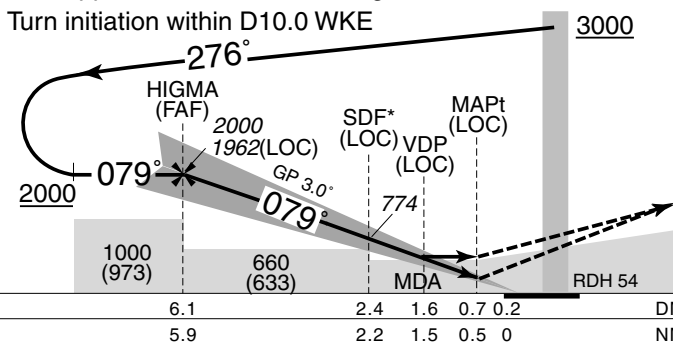
RJCW / WAKKANAI

ILS or LOC RWY08

SAPPORO CONTROL 132.6 – 255.2 134.25 – 260.4	ILS - LOC 111.1 IWK ILS-GP 331.7 ILS-DME CH-48X	WAKKANAI RADIO 118.3 – 126.2	NO RADAR
--	--	---------------------------------	----------



\*Not applicable for CAT D circling



MISSED APPROACH  
Climb on HDG079° to 3000FT,  
turn left, direct to WKE VOR/DME  
and hold.  
Contact WAKKANAI RADIO.

Timing not authorized for defining the MAPt.

Missed APCH climb gradient MNM 3.0%

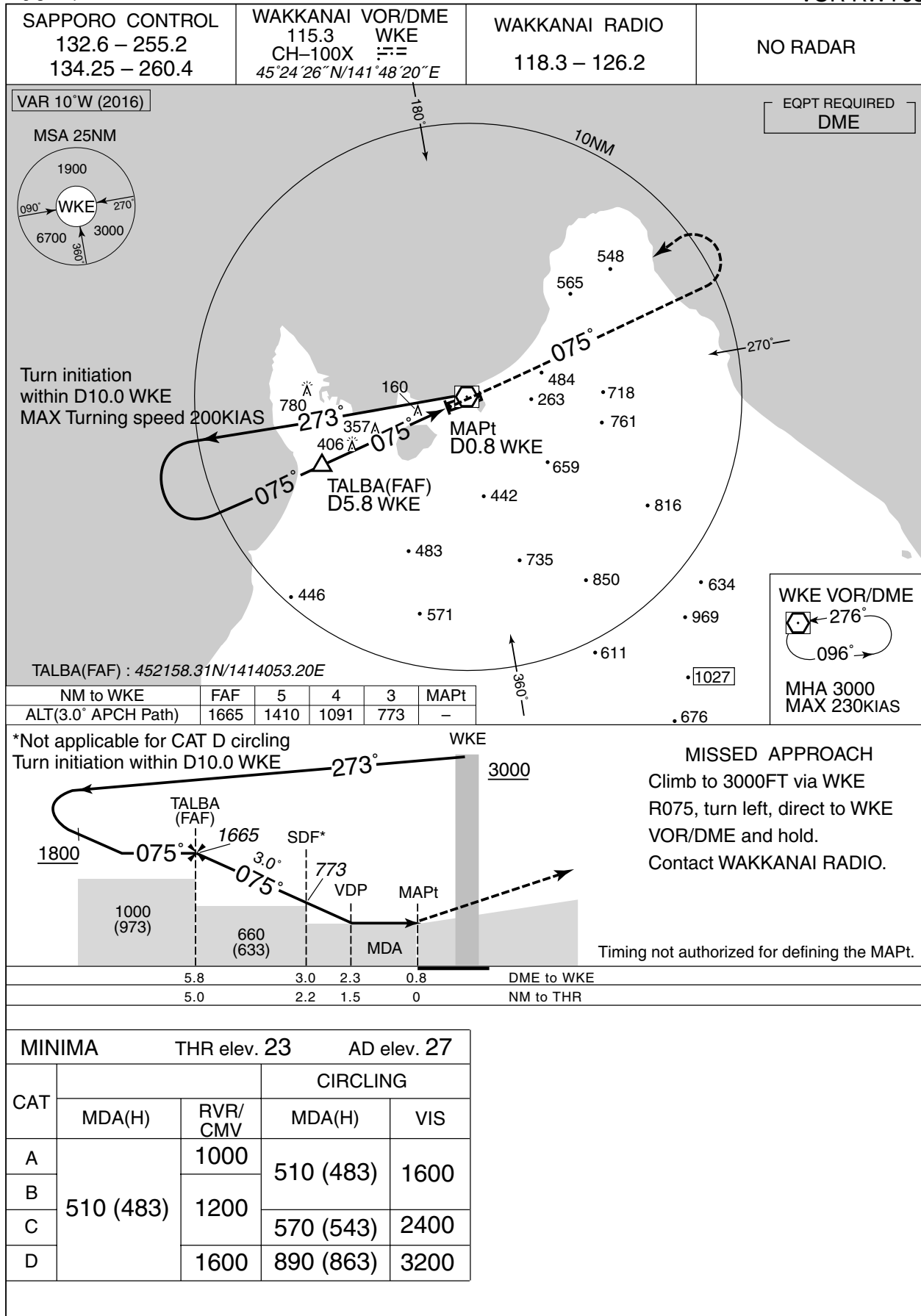
MINIMA		THR elev. 23		AD elev. 27		
CAT	CAT I		LOC		CIRCLING	
	DA(H)	RVR/CMV	MDA(H)	RVR/CMV	MDA(H)	VIS
A	223 (200)	550	510 (483)	1000	510 (483)	1600
B				1200		
C				570 (543)	2400	
D				1600	890 (863)	3200

MINIMA with Missed APCH climb gradient of 2.5% are not established.

INSTRUMENT APPROACH CHART

RJCW / WAKKANAI

VOR RWY08







## B-767型機の滑走路180°転回実施要領

1. 滑走路中心線からターニングパッド中心線標識に従って進行する。
2. 経路目標標識1または転回灯1が一直線に見えるように進行し、経路目標標識2または転回灯2が一直線に見えた時転回を開始する。転回時のSTEERING ANGLEは45度以上を使用する。

## Procedure of 180° turn on RWY of B-767 aircraft

1. Proceed along the RWY Center Line to the starting point of the RWY Turn Pad Center Line Marking; then
2. Proceed along the RWY Turn Pad Center Line Marking to see RWY Turn Pad Aiming Marker 1 or Turning Point Indicator Light 1 on a straight line, then commence turn at the spot where you (pilot) can see the RWY Turn Pad Aiming Marker 2 or Turning Point Indicator Light 2 on a straight line at an angle of 9 o'clock. When turning, take 45° or more steering angle.

